

2018 Year End

MDOC Adult Data Report



MDOC Data Team

This document contains key adult correctional data points to assist management and staff in making evidence-based decisions.

Ryan Thornell, Ph.D., Deputy Commissioner
Maine Department of Corrections
Correctional Programming Division
25 Tyson Drive
State House Station 111
Augusta Maine 04333-0111
207-287-2711

3/19/2019



Table of Contents

1.0 Population & Demographics	3
Average Daily Population	3
1.2 Population Demographics	3
2.0 Correctional Programming.....	5
2.1 Correctional Program Fidelity.....	5
2.2 Case Plans & Case Management	6
2.3 Treatment, Educational & Vocational Programming For Men	7
Statewide Treatment Programming.....	7
Men’s Substance Abuse Programming	8
Men’s Sex Offender Programming.....	8
Men’s Educational Programming.....	9
Men’s Vocational Programming.....	9
2.4 Treatment, Educational & Vocational Programming For Women.....	10
Women’s Substance Abuse Programming	10
Women’s Sex Offender Programming	10
Women’s Educational Programming.....	11
Women’s Vocational Programming	11
Hi-SET/HSED Certifications Earned While Incarcerated	12
3.0 Classification	13
3.1 Admissions & Releases	13
Admissions and Releases Overtime	13
New Admissions by Crime Group.....	17
3.2 Current Custody Ratings.....	17
Custody Rating Overtime	18
3.3 Facility Transfers.....	19
Number of Transfers between Facilities	19
Return to Higher Custody.....	20
SCCP Cases by Month.....	21



Maine Department of Corrections 2018 Year End Report

1.0 Population & Demographics

Average Daily Population The average monthly male population has increased by 256 in four years. That is a 13.1% increase while the *women's average increased by 55 or 30.4% average population increase.*

	Male				Female			
	2015	2016	2017	2018	2015	2016	2017	2018
January	1,997	1,892	2,135	2,186	157	199	229	227
February	1,978	1,917	2,144	2,189	163	200	224	236
March	1,974	1,932	2,170	2,206	171	205	224	240
April	1,988	1,949	2,150	2,226	169	200	229	233
May	1,979	1,967	2,143	2,237	177	200	228	230
June	1,973	1,990	2,126	2,245	182	204	224	234
July	1,951	1,995	2,118	2,228	183	209	225	240
August	1,939	2,021	2,120	2,211	189	223	227	239
September	1,919	2,049	2,140	2,202	190	221	225	244
October	1,908	2,097	2,151	2,202	193	223	226	240
November	1,916	2,122	2,163	2,188	200	223	223	234
December	1,908	2,128	2,189	2,174	198	226	225	234
Aver Pop	1,952	2,005	2,146	2,208	181	211	226	236

1.2 Population Demographics

Average Age

	M	F
2015	38	36
2016	38	35
2017	38	36
2018	39	36
Average Age	38	36

No statistically significant changes in average age from 2015-2018

Racial Breakdown by Gender

Race		2015	2016	2017	2018
M	Asian	0%	1%	0%	1%
	Black or African American	9%	9%	10%	12%
	Native American	3%	2%	3%	3%
	Two or More Races	1%	1%	1%	1%
	Unknown	1%	1%	2%	2%
	White	86%	85%	84%	81%
	Total	100%	100%	100%	100%
F	Asian	0%	1%	0%	1%
	Black or African American	3%	3%	4%	3%
	Native American	5%	5%	5%	3%
	Two or More Races	1%	1%	2%	2%
	Unknown	1%	1%	1%	1%
	White	89%	88%	88%	91%
	Total	100.0%	100.0%	100.0%	100.0%

The racial profile of female offenders has remained essentially the same for the last four years. Men have seen a slight increase from 9% of the population to 12% for Black or African Americans. The percentage of Caucasian Men in the population has decreased from 86% in 2015 to 81% in 2018.



Maine Department of Corrections 2018 Year End Report

Restrictive Housing Population (RSU)

All % of pop in RSU numbers below reflect the average daily pop for the given month being reported. The 2018 averages are based on the averaged 12 months.

	Jan 2018	Feb 2018	March 2018	April 2018	May 2018	June 2018	July 2018	Aug 2018	Sept 2018	Oct 2018	Nov 2018	Dec 2018	2018 Ave.
MSP	16.29	16.04	15.87	18.63	19.52	20.77	19.61	21.32	20.03	26.43	22.77	21.81	19.92
MCC	4.97	4.68	5.16	4.63	6.00	5.13	5.00	4.24	4.87	4.50	3.87	6.84	4.99
Women	2.90	1.39	1.71	1.36	1.55	1.50	2.15	1.97	2.43	2.07	2.90	3.16	2.09
Total	24.16	22.11	22.74	24.62	27.07	27.40	26.76	27.53	27.33	33.00	29.53	31.81	27.01
% of Pop. In RSU	1.00%	0.91%	0.93%	1.00%	1.10%	1.11%	1.07%	1.11%	1.12%	1.35%	1.22%	1.32%	1.10%

Intensive Mental Health Unit Average Population

Month/Year	Average Population
Jan-18	26
Feb-18	24
Mar-18	26
Apr-18	28
May-18	27
Jun-18	29
Jul-18	27
Aug-18	27
Sep-18	28
Oct-18	28
Nov-18	27
Dec-18	26
Aver Pop YTD	27



2.0 Correctional Programming

2.1 Correctional Program Fidelity

Beginning in the spring of 2016, DOC staff participated in a University of Cincinnati Corrections Institute (UCCI) training on fidelity monitoring using their group observation and coaching process. The form is designed to provide a platform for trained staff to observe and rate program delivery in six individual skill areas and adherence to specific program curriculums, providing an overall fidelity score. The scores can range from 0-2. A zero score indicates “needs improvement,” 1 indicates “satisfactory,” and 2 “very satisfactory.” Initial overall score goals for Maine DOC programs was set at 1.5, with no individual skill area being under 1. All scores for each observation are entered in a database that keeps cumulative overall scores for each program.

Immediately following each observation, rater feedback is provided to program staff to highlight strengths and areas of needed improvement. Cumulative reporting on each program has been provided to identify Department-wide areas of need, and specific targeted training to reinforce skill areas has been provided.

The table below shows DOC core programming cumulative scores for 2018 observed programs. To date, all core programs included in the project are being delivered above our initial goal of 1.5.

	Core Program Observed			
	T4C	CBI-SA	CBI-SO	LIB
Group Structure/Format	1.86	1.88	1.83	1.86
Facilitator Knowledge/ Modeling	1.97	1.86	2.00	1.95
Teaching Skills	1.90	1.75	1.76	1.85
Behavior Management	1.80	1.86	1.90	1.82
Communication	1.92	1.87	2.00	1.97
Interpersonal Characteristics	2.00	1.97	1.96	1.98
Overall Fidelity Score	1.91	1.87	1.91	1.91
Total 2018 Observations	11	21	6	26

Facility	T4C	CBI-SA	CBI-SO	LIB
MCC-M	4	7		2
MCC-W		2		5
SMWRC				3
MVCF	3	10	6	16
MSP	1	2		
BCF	3			1
Total	11	21	6	27

The table to the left shows the number of observations completed during 2018, by facility and program name. Greyed out areas indicate that program is not offered at a facility.



Maine Department of Corrections 2018 Year End Report

2.2 Case Plans & Case Management

Case Plans, Timely Reviews, and Reentry Contacts for all months, 2018.

Case Plans

	Jan	Feb	Mar	Apr	May	Jun	Jul	Aug	Sep	Oct	Nov	Dec	Facility Ave.
	Case Plan OK	Case Plan OK	Case Plan OK	Case Plan OK	Case Plan OK	Case Plan OK	Case Plan OK	Case Plan OK	Case Plan OK	Case Plan OK	Case Plan OK	Case Plan OK	Case Plan OK
Bolduc	93%	94%	99%	97%	88%	88%	84%	76%	68%	82%	99%	93%	88%
MCC-M	84%	83%	84%	83%	88%	91%	89%	87%	87%	82%	87%	86%	86%
MCC-F	81%	85%	85%	87%	85%	91%	89%	92%	91%	94%	91%	88%	88%
MSP	70%	70%	69%	66%	64%	70%	71%	73%	77%	80%	80%	78%	72%
MVCF	90%	83%	93%	93%	92%	90%	88%	86%	85%	86%	81%	88%	88%
All Fac. Avg.	84%	83%	86%	85%	83%	86%	84%	83%	82%	85%	88%	87%	85%

Timely Reviews

	Jan	Feb	Mar	Apr	May	Jun	Jul	Aug	Sep	Oct	Nov	Dec	Facility Ave.
	Old CP Review	Old CP Review	Old CP Review	Old CP Review	Old CP Review	Old CP Review	Old CP Review	Old CP Review	Old CP Review	Old CP Review	Old CP Review	Old CP Review	Old CP Review
Bolduc	3%	4%	3%	6%	10%	9%	15%	21%	23%	18%	2%	7%	10%
MCC-M	6%	6%	6%	6%	5%	5%	6%	6%	7%	6%	6%	7%	6%
MCC-F	15%	14%	17%	12%	9%	6%	7%	7%	6%	7%	5%	9%	10%
MSP	22%	23%	23%	22%	24%	22%	23%	22%	18%	16%	17%	18%	21%
MVCF	10%	13%	7%	8%	8%	8%	12%	14%	12%	14%	14%	11%	11%
All Fac. Avg.	22%	12%	11%	11%	11%	10%	13%	14%	13%	12%	9%	10%	12%

Reentry Contacts

	Jan	Feb	March	April	May	June	July	Aug	Sept	Oct	Nov	Dec	Facility Ave
	Contact %	Contact %	Contact %	Contact %	Contact %	Contact %	Contact %	Contact %	Contact %	Contact %	Contact %	Contact %	Contact %
Bolduc	72%	72%	75%	73%	60%	100%	100%	100%	99%	98%	100%	100%	87%
MCC-M	93%	96%	86%	86%	86%	90%	86%	91%	88%	86%	85%	87%	88%
MCC-F	95%	98%	95%	99%	99%	100%	100%	100%	100%	100%	100%	99%	99%
MSP	95%	78%	86%	86%	78%	71%	76%	90%	93%	90%	92%	88%	85%
MVCF	99%	100%	100%	83%	97%	97%	97%	97%	100%	99%	95%	99%	97%
All Fac. Ave.	91%	89%	88%	85%	84%	92%	92%	96%	96%	95%	94%	95%	91%



Maine Department of Corrections 2018 Year End Report

2.3 Treatment, Educational & Vocational Programming - Men

Statewide Treatment Programming

The programs listed below are core treatment programs for the adult facility male DOC population. The chart demonstrates core programs successfully completed by offenders, statewide, by calendar year. Included are cognitive behavioral treatment programs, residential and outpatient substance abuse programming, residential sex offender treatment, domestic violence programming, and parenting programs.

Program Name	Successful Completions		
	2016	2017	2018
Alternatives To Violence	13	30	12
Anger Management	101	33	27
CBI Sex Offender Mt View	41	64	35
Challenge Program	82	59	21
Criminal Addictive Thinking	17	35	19
Family Violence Prevention	92	138	157
Inside-Out Dads	115	88	68
Long Distance Dads	28	15	3
Mt View Sub Abuse Program	35	36	46
New Freedom		23	47
Psychology Of Incarceration	120	92	23
R.U.L.E.	11	16	15
Recovery Peer Support- Coach	31	47	20
Recovery Peer Support- Participant	1		20
SA Aftercare		20	26
SA CBI-SA	29	107	84
SA Individual		23	52
SA Living in Balance- Core	33	241	202
SA Living in Balance- Other		1	4
SA Living in Balance- Relapse Prevention	24	56	76
SA Prime For Life	79	75	65
SA Prime Solutions	43	10	28
SA Stages of Change		56	21
SA RSA & sub abuse CRA	37	37	46
Seeking Safety	8	55	52
Sexual Behavior Treatment Mt. View	23	39	33
The Impact of Crime	7	8	16
Thinking for a Change	146	167	139
YAOP	22	29	27
Grand Total	1138	1600	1384



Maine Department of Corrections 2018 Year End Report

Men's Substance Abuse Programming

Below are DOCs statewide core substance abuse programs, broken out by program name. During 2017 we added Individual substance abuse services to our core programming. The large decrease in Outpatient Generic completers was due to a process change requiring enrollments to accurately reflect programs completed by name, which accounts partially for the 2017 increase in other substance abuse program completions.

Substance Abuse Programming	Successful Completions		
	2016	2017	2018
Mt View Sub Abuse Program	35	36	46
SA Aftercare		20	26
SA CBI-SA	29	107	84
SA Individual		23	52
SA Living in Balance- Core	33	241	202
SA Living in Balance- Other		1	4
SA Living in Balance- Relapse Prevention	24	56	76
SA Outpatient Generic	233		
SA Prime For Life	79	75	65
SA Prime Solutions	43	10	28
SA Stages of Change		56	21
CRA/RSA	37	37	46
Seeking Safety	8	55	52
DSAT	28	1	
Grand Total	549	718	702

Men's Sex Offender Programming

The numbers show program stats from 2016 through 2018, for sex offender program successful completions, by program name, for all adult facilities combined. The overarching sex offender programs were RULE & Sexual Behavior Treatment-Mt. View. The CBI-SO program is a component of the Mountain View Correctional Facility sex offender program.

Sex Offender Programming	Successful		
	2016	2017	2018
Sexual Behavior Treatment Mt. View	23	39	33
CBI Sex Offender Mt View	41	64	35
R.U.L.E.	11	16	15
Grand Total	75	119	83



Maine Department of Corrections 2018 Year End Report

Men's Educational Programming

Successful education program completions comparison 2016 through 2018. The numbers are for all Adult Facilities combined for each year.

Education Program	Successful		
	2016	2017	2018
Adult Basic Education	18	29	16
College	4	11	3
College Transition			2
HiSET Prep Math		45	61
HiSET Prep Reading	6	59	93
HiSET Prep Science	1	53	92
HiSET Prep Social Studies	5	64	95
HiSET Prep Writing	2	40	73
HiSET/HiSET prep	87	42	2
Post-Secondary/College prep	8	24	
Grand Total	131	367	437

Men's Vocational Programming

Successful vocational program completions comparison 2016 through 2018. The numbers are for all Adult Facilities combined for each year.

Vocational Program	Successful		
	2016	2017	2018
Auto Mechanics	3	5	9
Bee Keeping		6	11
Building Trades	27	28	2
Business Basics	1	3	
Composting			5
Computer Technology	29	1	6
Culinary Arts	26	17	16
Electrical		4	5
Flagger Certification			16
Master Gardener			12
NCCER		17	73
OSHA Certification	26	137	68
Servsafe Certification		11	86
Small Engines	39	19	17
Welding	3	9	
Wood Harvesting 101	15	14	15
Wood Harvesting 102		4	11
Work Ready	68	112	61
Grand Total	237	387	413



Maine Department of Corrections 2018 Year End Report

2.4 Treatment, Educational & Vocational Programming - Women

The programs listed below are the core programming for the adult female DOC facility population. The numbers are a from 2016 through 2018, by program name, for all adult female pop combined.

Women's Treatment Programs	Successful Completions		
	2016	2017	2018
Anger Management	9	12	9
Beyond Anger & Violence	16	15	1
Beyond Trauma	13	32	13
Co-Dependent No More	42	62	40
Criminal Addictive Thinking		11	65
DSAT	47		
Family Violence Prevention	19	12	
New Freedom		6	16
R.U.L.E.			4
Recovery Peer Support- Coach	9	1	
Recovery Peer Support- Participant			17
SA CBI-SA	4	24	31
SA Individual			9
SA Living in Balance- Core		63	74
SA Living in Balance- Other	9	45	15
SA Living in Balance- Relapse Prevention		23	26
Seeking Safety	75	81	47
Moving On	55	37	20
Grand Total	298	424	387

Women's Substance Abuse Programming

Woman's Substance Abuse Programs	Successful Completers		
	2016	2017	2018
Co-Dependent No More	42	62	40
DSAT	47		
SA CBI-SA	4	24	31
SA Individual			9
SA Living in Balance- Core		63	74
SA Living in Balance- Other	9	45	15
SA Living in Balance- Relapse Prevention		23	26
Seeking Safety	75	81	47
Grand Total	177	298	242



Maine Department of Corrections 2018 Year End Report

Women's Educational Programming

Education Programs	Successful		
	2016	2017	2018
Adult Basic Education	7	1	
College	25	21	20
HiSET Prep Math		10	7
HiSET Prep Reading	1	14	14
HiSET Prep Science		10	10
HiSET Prep Social Studies		12	12
HiSET Prep Writing		9	12
HiSET/HiSET prep	11	5	
Post-Secondary/College prep	37	17	16
Grand Total	81	99	91

Women's Vocational Programming

Vocational Program	Successful		
	2016	2017	2018
Computer Coding			1
Computer Technology	16		
Culinary Arts	12	18	6
OSHA Certification	1	14	16
Servsafe Certification		10	49
Work Ready	30	6	42
Grand Total	59	48	114



Maine Department of Corrections 2018 Year End Report

Hi-SET/HSED Certifications Earned While Incarcerated

Total high school equivalency diplomas issued during 2018, by Maine Department of Education, by facility and month.

	2018 Jan	2018 Feb	2018 March	2018 April	2018 May	2018 June	2018 July	2018 Aug	2018 Sept	2018 Oct	2018 Nov	2018 Dec	Total 2018
BCF	1	0	0	0	0	0	1	0	0	1	0	1	4
MCC-M	0	0	1	0	1	1	0	0	0	2	1	3	9
MCC-F	0	0	2	2	0	1	2	0	1	0	1	1	10
MSP	0	1	2	1	4	3	0	5	1	2	4	4	27
MVCF	1	1	0	2	4	1	2	2	2	1	2	2	20
Totals	2	2	5	5	9	6	5	7	4	6	8	11	70

Total HSED issued by DOE by completion year, for the last three years.

Facility	2016	2017	2018
BCF	8	3	4
DCF	7	2	N/A
MCC-All	11	12	19
MSP	30	24	27
MVCF	22	18	20
Totals	78	59	70



3.0 Classification

3.1 Admissions & Releases

Admissions and Releases Overtime

Average Monthly Gain

	2015	2016	2017	2018	All Years
All Population	4.92	7.25	1.67	-4.08	2.44
Men	0.83	5.33	1.25	-6.17	0.31
Women	4.08	2.25	0.42	2	2.19

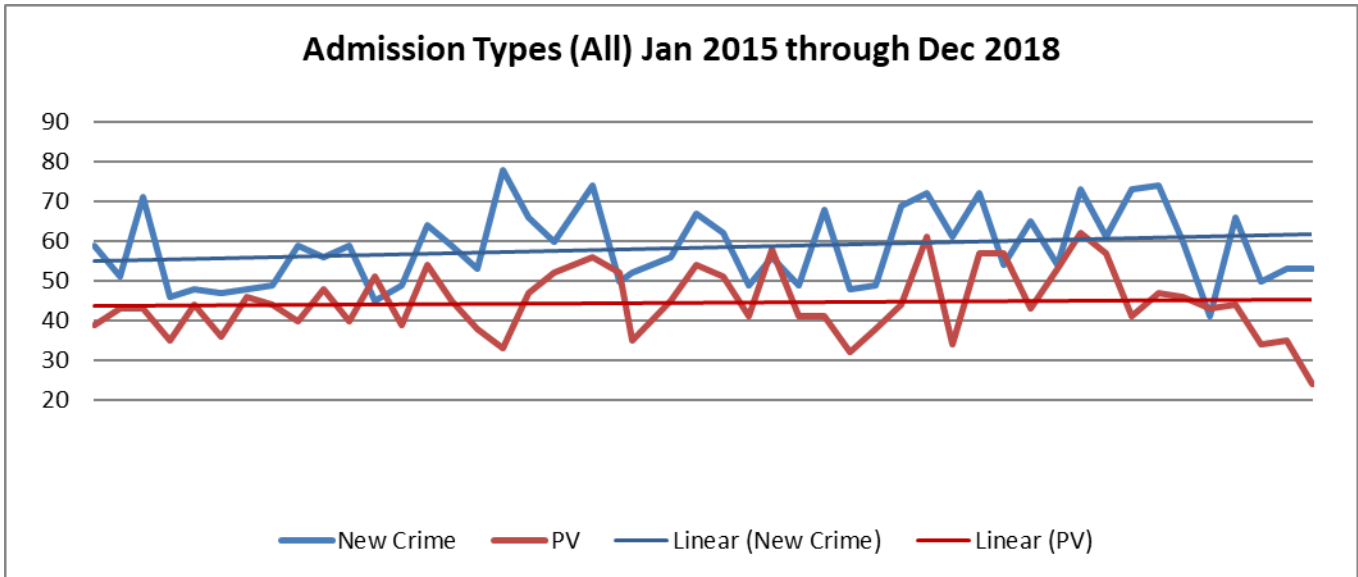
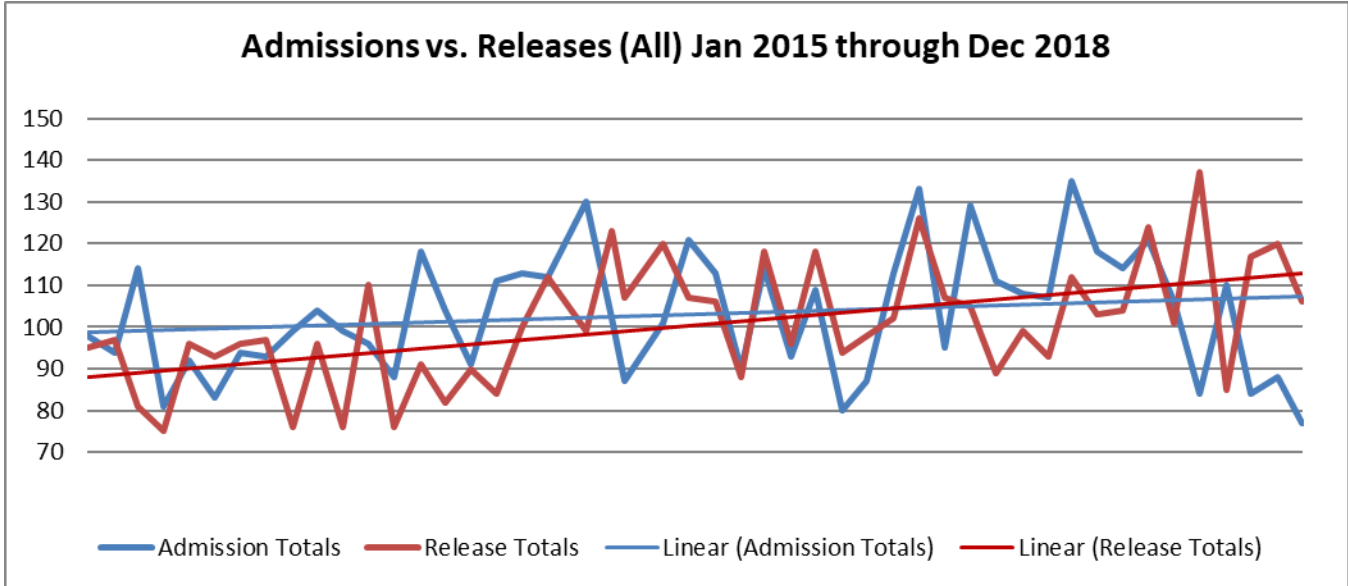
New Crime Admissions vs Probation Returns by Gender

		2015	2016	2017	2018
Men	<i>New Crime</i>	563	635	613	687
	<i>PV</i>	425	467	479	457
	Admission Totals	988	1102	1092	1144
	<i>Straight</i>	450	496	525	623
	<i>Probation</i>	528	542	552	608
	Release Totals	978	1038	1077	1231
Women	<i>New Crime</i>	75	93	99	100
	<i>PV</i>	84	87	76	102
	Admission Totals	159	180	175	202
	<i>Straight</i>	58	67	81	88
	<i>Probation</i>	52	86	89	97
	Release Totals	110	153	170	185
All Population	<i>New Crime</i>	638	728	709	765
	<i>PV</i>	509	550	555	562
	Admission Totals	1147	1278	1267	1327
	<i>Straight</i>	508	563	607	699
	<i>Probation</i>	580	628	641	717
	Release Totals	1088	1191	1247	1416



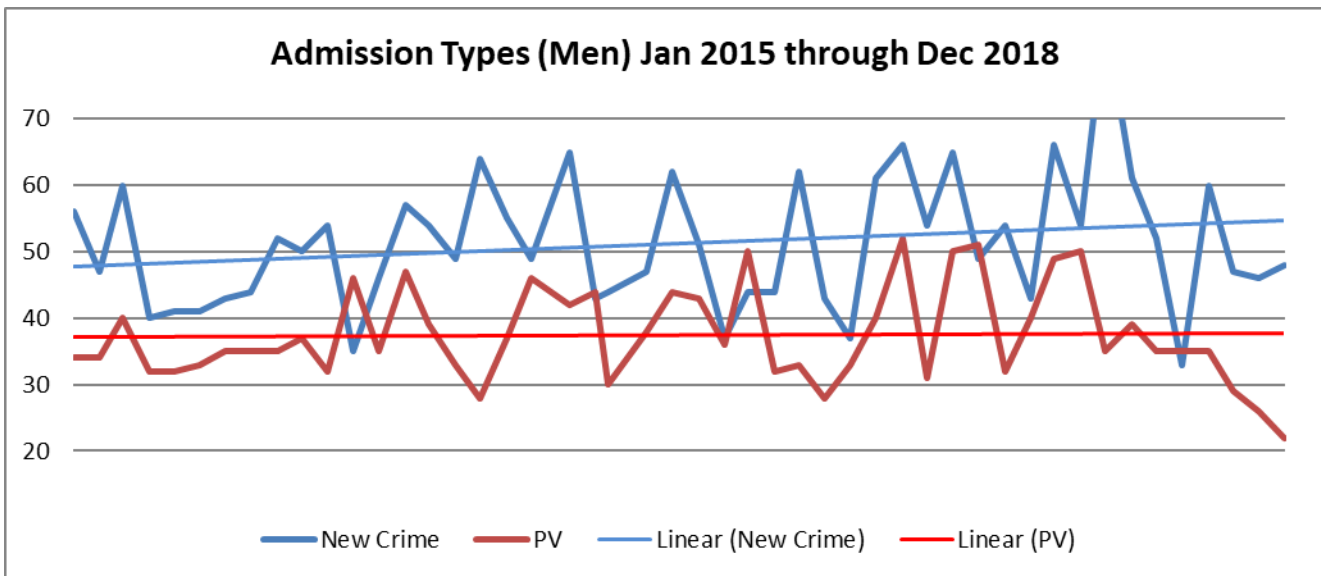
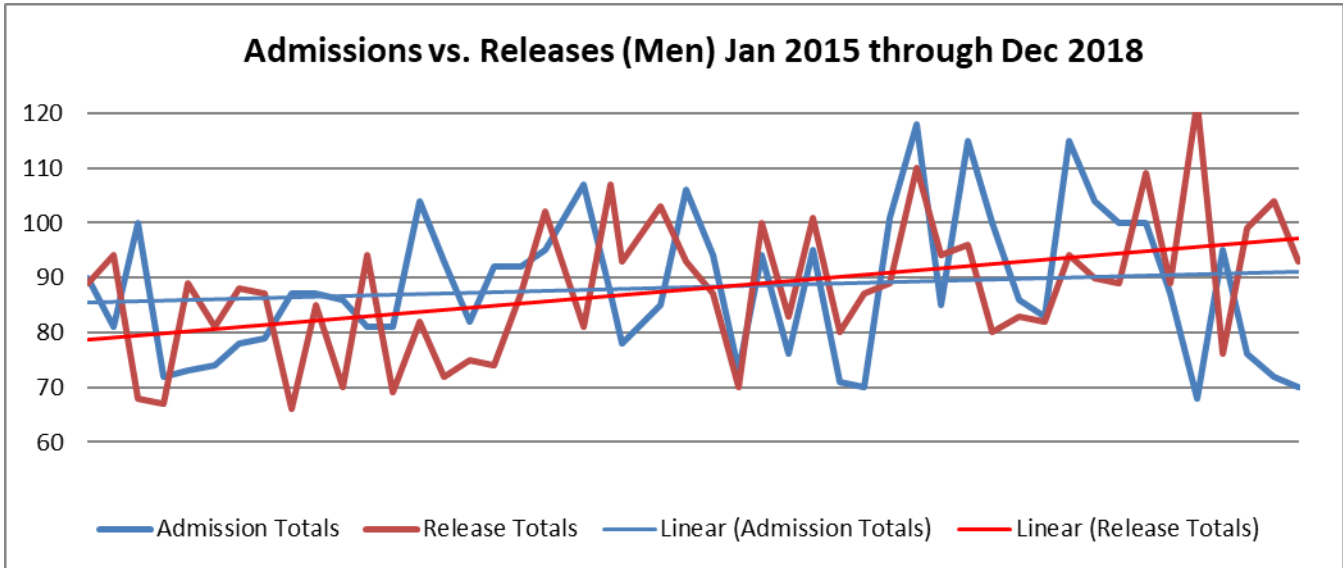
Maine Department of Corrections 2018 Year End Report

The next several charts represent a cumulative visual look at admissions and releases, types of admissions, and are broken out by total population, men, and women over the three-year period of 2015-2018.



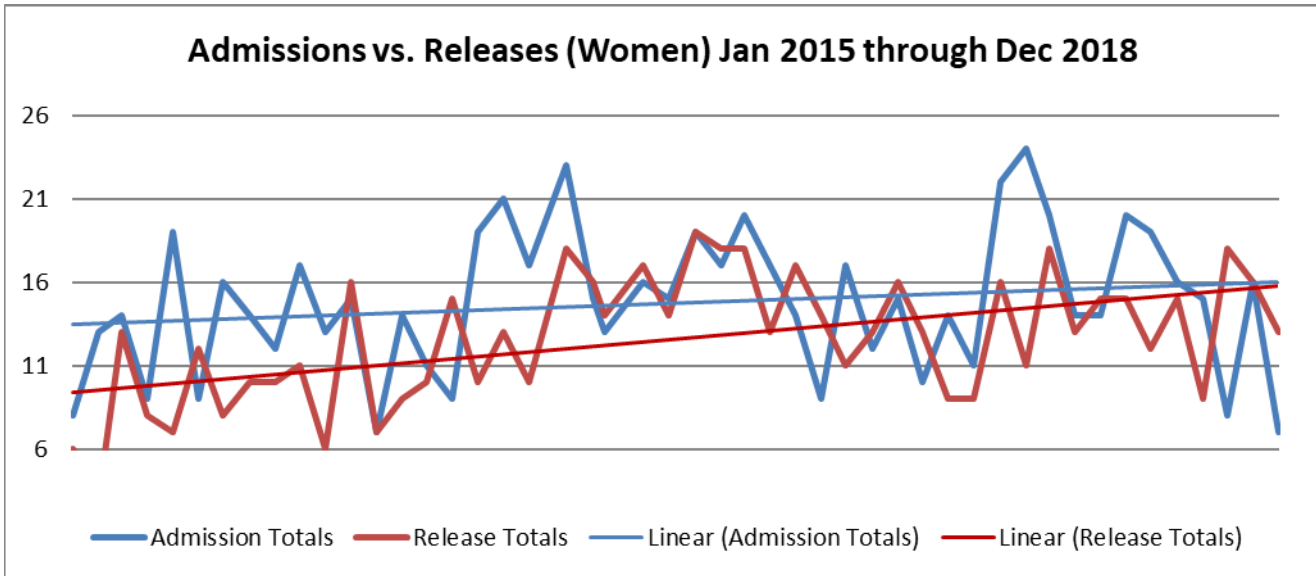


Maine Department of Corrections 2018 Year End Report

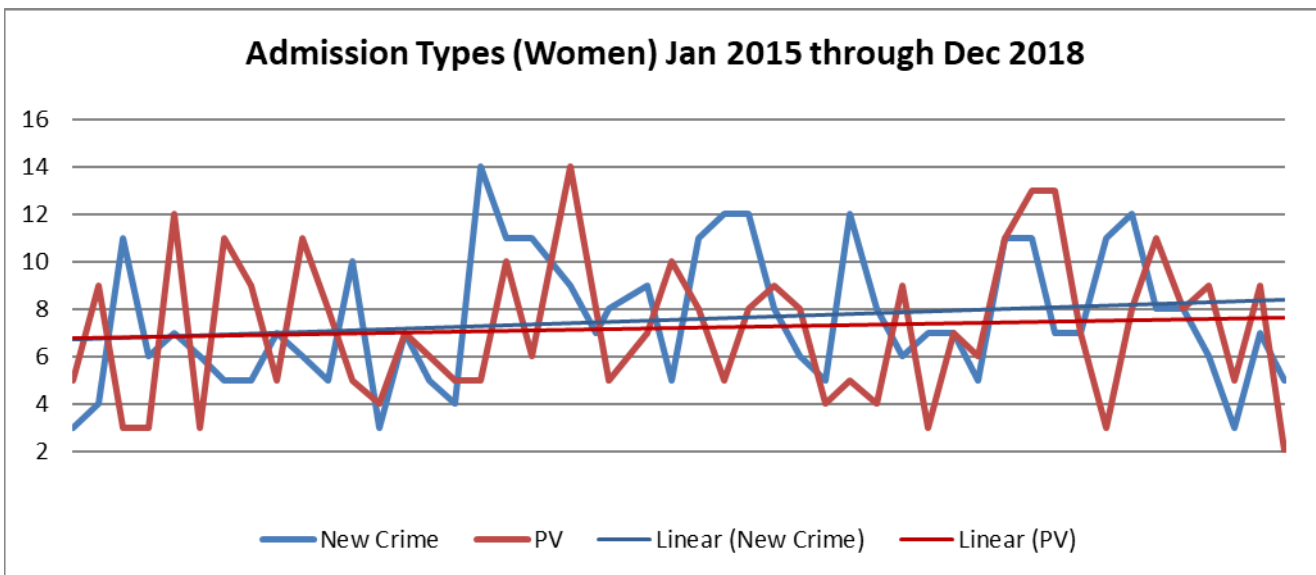




Maine Department of Corrections 2018 Year End Report



When examining the admission types for women over the last three years it is clear to see there has been an increase of new crime admissions, and a decrease of probation returns.





Maine Department of Corrections 2018 Year End Report

New Admissions by Crime Group

The following two tables show new admissions by controlling sentences for new crimes, by year, by gender.

SOCIETY IN NEW CHARGES BY YEAR

CRIME GROUP WOMEN	2014		2015		2016		2017		2018	
ARSON	1	1.47%	1	1.28%	1	1.04%	0	0.00%	1	1.00%
ASSAULT/THREATEN	4	5.88%	5	6.41%	7	7.29%	8	8.00%	3	3.00%
BAIL	0	0.00%	1	1.28%	2	2.08%	0	0.00%	0	0.00%
BURGLARY	4	5.88%	4	5.13%	2	2.08%	3	3.00%	6	6.00%
CONSPIRACY	1	1.47%	0	0.00%	1	1.04%	1	1.00%	1	1.00%
DRUGS	24	35.29%	33	42.31%	39	40.63%	56	56.00%	51	51.00%
FALSIFICATION	1	1.47%	0	0.00%	0	0.00%	0	0.00%	0	0.00%
FORGERY	3	4.41%	0	0.00%	3	3.13%	2	2.00%	1	1.00%
KIDNAPPING	0	0.00%	0	0.00%	0	0.00%	1	1.00%	1	1.00%
MANSLAUGHTER	0	0.00%	3	3.85%	1	1.04%	4	4.00%	1	1.00%
MURDER	1	1.47%	2	2.56%	0	0.00%	0	0.00%	1	1.00%
OUI	3	4.41%	2	2.56%	2	2.08%	0	0.00%	1	1.00%
PROPERTY DAMAGE	0	0.00%	1	1.28%	0	0.00%	0	0.00%	0	0.00%
PUBLIC ADMIN	0	0.00%	1	1.28%	2	2.08%	2	2.00%	2	2.00%
ROBBERY	8	11.76%	3	3.85%	11	11.46%	6	6.00%	0	0.00%
SEX OFFENSES	0	0.00%	1	1.28%	3	3.13%	3	3.00%	1	1.00%
STALKING/TERRORIZE	0	0.00%	0	0.00%	0	0.00%	0	0.00%	1	1.00%
THEFT	14	20.59%	13	16.67%	19	19.79%	12	12.00%	21	21.00%
TRAFFIC CRIMINAL	4	5.88%	8	10.26%	2	2.08%	2	2.00%	8	8.00%
WEAPONS	0	0.00%	0	0.00%	1	1.04%	0	0.00%	0	0.00%
Grand Total	68	100.00%	78	100.00%	96	100.00%	100	100.00%	100	100.00%

The highest rate of increase for a crime group was for women's drug charges, an increase of 15% over 4 years.

Woman being admitted on Drug and/or theft charges in 2018 accounted for almost 75% of the admissions.

CRIME GROUP SOCIETY IN NEW CHARGES BY YEAR

CRIME GROUP MEN	2014		2015		2016		2017		2018	
ANIMAL WELFARE	0	0.00%	0	0.00%	0	0.00%	0	0.00%	1	0.15%
ARSON	8	1.54%	4	0.70%	10	1.52%	9	1.42%	6	0.92%
ASSAULT/THREATEN	80	15.36%	91	16.02%	88	13.33%	103	16.30%	105	16.03%
ATTEMPT	2	0.38%	3	0.53%	0	0.00%	1	0.16%	2	0.31%
BAIL	7	1.34%	4	0.70%	4	0.61%	12	1.90%	10	1.53%
BURGLARY	60	11.52%	50	8.80%	52	7.88%	38	6.01%	47	7.18%
CONSPIRACY	3	0.58%	3	0.53%	4	0.61%	8	1.27%	6	0.92%
DRUGS	132	25.34%	146	25.70%	202	30.61%	179	28.32%	197	30.08%
FALSIFICATION	1	0.19%	2	0.35%	8	1.21%	5	0.79%	7	1.07%
FORGERY	1	0.19%	3	0.53%	8	1.21%	7	1.11%	5	0.76%
KIDNAPPING	2	0.38%	0	0.00%	2	0.30%	2	0.32%	2	0.31%
LIQUOR	0	0.00%	1	0.18%	0	0.00%	0	0.00%	0	0.00%
MANSLAUGHTER	4	0.77%	11	1.94%	6	0.91%	10	1.58%	13	1.98%
MURDER	6	1.15%	8	1.41%	10	1.52%	11	1.74%	9	1.37%
OFFENSES/FAMILY	0	0.00%	0	0.00%	0	0.00%	1	0.16%	0	0.00%
OUI	9	1.73%	14	2.46%	17	2.58%	13	2.06%	11	1.68%
PROPERTY DAMAGE	2	0.38%	0	0.00%	7	1.06%	4	0.63%	5	0.76%
PUBLIC ADMIN	6	1.15%	10	1.76%	8	1.21%	7	1.11%	13	1.98%
ROBBERY	41	7.87%	32	5.63%	38	5.76%	36	5.70%	19	2.90%
SEX OFFENSES	48	9.21%	57	10.04%	63	9.55%	54	8.54%	53	8.09%
STALKING/TERRORIZEING	5	0.96%	8	1.41%	8	1.21%	5	0.79%	4	0.61%
TAX	0	0.00%	1	0.18%	0	0.00%	0	0.00%	0	0.00%
THEFT	55	10.56%	60	10.56%	59	8.94%	58	9.18%	69	10.53%
TRAFFIC CRIMINAL	44	8.45%	55	9.68%	59	8.94%	56	8.86%	65	9.92%
TRESPASS	4	0.77%	2	0.35%	2	0.30%	7	1.11%	3	0.46%
WEAPONS	1	0.19%	3	0.53%	5	0.76%	6	0.95%	4	0.61%
Grand Total	521	100%	568	100.00%	660	100.00%	632	100.00%	655	100.00%



Maine Department of Corrections 2018 Year End Report

3.2 Current Custody Ratings

Custody Rating Overtime

		Jan	Feb	Mar	Apr	Mar	June	July	Aug	Sept	Oct	Nov	Dec	2018 Avg.
Male	Close	9%	9%	9%	9%	9%	9%	9%	9%	9%	10%	10%	10%	9%
	Medium	48%	49%	50%	49%	49%	50%	50%	49%	49%	50%	50%	51%	49%
	Minimum	27%	27%	27%	26%	26%	26%	27%	27%	28%	28%	26%	26%	27%
	Community	15%	14%	13%	12%	11%	11%	11%	10%	10%	10%	10%	10%	11%
	Unclassified	1%	1%	1%	5%	4%	4%	3%	4%	4%	3%	4%	3%	3%
	Grand Total	100%	100%	100%	100%	100%	100%	100%	100%	100%	100%	100%	100%	100%
Female	Close	5%	4%	4%	4%	4%	3%	2%	2%	2%	2%	2%	1%	3%
	Medium	29%	28%	30%	30%	30%	31%	33%	33%	33%	36%	37%	38%	32%
	Minimum	30%	34%	36%	34%	35%	35%	32%	34%	36%	34%	33%	35%	34%
	Community	35%	32%	30%	26%	28%	27%	28%	27%	26%	26%	25%	25%	28%
	Unclassified	2%	1%	0%	5%	2%	4%	5%	4%	3%	2%	4%	1%	3%
	Grand Total	100%	100%	100%	100%	100%	100%	100%	100%	100%	100%	100%	100%	100%



Maine Department of Corrections 2018 Year End Report

3.3 Facility Transfers

Number of Transfers between Facilities

Monthly Transfer information is derived from the weekly transfer list completed by the MDOC Classification Department. The weekly transfer list is totaled by month and tracked below.

	2018- Jan	2018- Feb	2018- Mar	2018- Apr	2018- May	2018- June	2018- July	2018- Aug	2018- Sep	2018- Oct	2018- Nov	2018- Dec
MCC to BCF	17	9	2	6	9	10	12	20	6	15	13	19
MCC to MVCF(U)	10	20	20	16	17	17	26	20	18	19	12	8
MCC to MVCF(P)	15	7	8	6	5	6	5	4	9	14	6	6
MCC to MSP	40	14	30	25	32	14	18	11	19	24	18	15
MCC to DCF	-	-	-	-	-	-	-	-	-	-	-	-
MVCF(U) to BCF	1	1	-	-	2	-	-	-	-	-	-	-
MVCF(P) to MVCF(U)	4	-	-	-	5	25	19	34	25	25	18	24
MVCF(P) to MSP	2	1	-	-	-	8	2	2	3	1	-	-
MVCF(U) to MSP	-	-	-	7	3	-	2	-	-	6	2	2
MVCF(P) to BCF	3	2	-	-	-	-	-	-	-	-	-	-
MVCF(U) to DCF	-	-	8	-	-	-	-	-	-	-	-	-
MVCF(P) to MCC	-	-	1	-	-	1	-	1	-	-	-	1
MSP to BCF	1	4	16	8	3	6	15	7	3	6	4	6
MSP to DCF	-	-	-	1	-	-	-	-	-	-	-	-
MSP to MVCF(P)	8	-	5	8	2	2	5	1	6	2	6	2
MSP to MVCF(U)	4	5	8	22	4	3	5	2	3	6	5	6
MSP to MCC	6	4	4	13	8	4	6	5	8	3	2	3
DCF to MSP	-	8	-	-	-	-	2	-	-	-	-	-
DCF to BCF	-	3	-	-	-	-	-	-	-	-	-	-
DCF to MVCF(U)	-	47	-	-	-	-	-	-	-	-	-	-
DCF to MCC	-	5	-	-	-	-	-	-	-	-	-	-
BCF to MVCF(P)	-	1	-	-	-	-	-	-	-	-	-	-
BCF to MVCF(U)	1	-	-	-	-	-	-	-	-	-	-	-
BCF to MCC	1	-	-	-	-	-	-	-	-	-	-	-



Maine Department of Corrections 2018 Year End Report

Return to Higher Custody

Return numbers are cumulative for the months of January 2018 – December 2018. Transfer to higher custody for reasons including: Population Distribution, Medical, and Pending Charges are not included in these counts. Case Management transfers are reviewed to determine if the reasons below were applicable to the inmates transfer to higher custody.

	BCF Count	DCF Count	MVCF Count
Assault-Client on Client w/out Serious Injury	0	0	3
Assault-Client on Client w/ Serious Injury	0	0	3
Assault-Client on Client but unable to verify	0	0	1
Community Release Violation	1	0	0
Contraband Found - Cell Phone(s)	0	0	1
Contraband Found - Drugs	2	0	2
Contraband Found - Other	1	0	1
DEI	1	0	2
Drug Test - Positive	30	0	19
Drug Trafficking	0	0	0
Escape - Attempted	0	0	0
Failure to Comply/Program	4	0	7
Fight-Client on Client	0	0	2
Higher Security	13	3	3
Medical	3	0	0
Self-Inflicted Injury	0	0	1
Sexual Misconduct by Client	0	0	2
Staff Assaulted by Client w/out Serious Injury	1	0	0
Tattooing	0	0	4
Theft	1	0	1
Threatening (to inmate)	0	0	1
Threatening (to staff)	0	0	2
Weapon(s) Involved/Seized	0	0	0
Grand Total	57	3	53

Out of the 113 returns to higher custody 43% were for testing positive on a drug test with the next highest return reason being for Higher Security.



Maine Department of Corrections 2018 Year End Report

SCCP Cases by Month

“SCCP Community Pop” is the current DOC population in the SCCP program. “SCCP Placements” and “SCCP Violations” represent the activity for the past 12 months. (SCCP Community as of 1/5/19)

	SCCP Placements		SCCP Violations		SCCP Community Pop	
	Male	Female	Male	Female	Male	Female
Jan-18	5	2	2	0	20	7
Feb-18	3	1	1	1	17	5
Mar-18	2	4	0	0	13	9
Apr-18	1	6	1	1	13	8
May-18	3	0	1	2	9	6
Jun-18	5	0	1	0	8	5
Jul-18	2	6	0	0	9	10
Aug-18	5	1	0	0	15	12
Sep-18	7	1	3	1	15	11
Oct-18	2	2	1	2	14	8
Nov-18	1	4	0	0	9	8
Dec-18	2	1	0	1	9	4

Maine Department of Corrections
Correctional Programming Division
25 Tyson Drive
Augusta, ME 04330
Phone (207) 287-2711
Fax (207) 287-4370
<http://www.maine.gov/corrections>



The mission of the Department of Corrections is to reduce the likelihood that juvenile and adult offenders will re-offend, by providing practices, programs and services which are evidence-based and which hold the offenders accountable.