

# **CEBE Launched Earth Day 2013**



*“Resilient Communities Restoring the Earth”*





# **CEBE Launched Earth Day 2013**

- Indiegogo campaign w/video





# **CEBE Launched Earth Day 2013**

- Indiegogo campaign w/video
- Main Street Norway "The Commons"





# **CEBE Launched Earth Day 2013**

- Indiegogo campaign w/video
- Main Street Norway "The Commons"
- 501(c)(3) in 2014





# **CEBE Launched Earth Day 2013**

- Indiegogo campaign w/video
- Main Street Norway "The Commons"
- 501(c)(3) in 2014
- Board of Directors & Advisory Board





# **CEBE Launched Earth Day 2013**

- Indiegogo campaign w/video
- Main Street Norway "The Commons"
- 501(c)(3) in 2014
- Board of Directors & Advisory Board
- Funded initially by project grants and donations





# **CEBE Launched Earth Day 2013**

- Indiegogo campaign w/video
- Main Street Norway "The Commons"
- 501(c)(3) in 2014
- Board of Directors & Advisory Board
- Funded initially by project grants and donations
- Operational support and paid staff in 2016





# **CEBE Launched Earth Day 2013**

- Indiegogo campaign w/video
- Main Street Norway "The Commons"
- 501(c)(3) in 2014
- Board of Directors & Advisory Board
- Funded initially by project grants and donations
- Operational support and paid staff in 2016
- Over 200 public events





# Coalitions and Partners

- Maine Climate Action NOW!
- Enviro Priorities Coalition
- Renew Maine
- Community Food Matters
- Maine Network of Community Food Councils
- Maine Food Convergence
  
- Cooperative Development Institute
- GrowSmart/Build Maine
- W. Foothills Land Trust
- Alan Day Comm. Garden
- Maine Farmland Trust
- Bicycle Coalition of Maine



## **CEBE MISSION 2013–2020**

To engage the community in developing practical, ecological solutions in the areas of food, shelter, energy, and transportation.

Our goal is local community sustainability, health, and resilience in response to climate instability and resource depletion.



# MISSION

---

To engage the community in addressing the climate emergency. We organize, educate, take direct action, and implement practical, ecological solutions for a just transition to a thriving, regenerative economy.

LEARN MORE

1874 APR 23  
 25 " 20  
 26 MAY 2  
 27 APR 17  
 28 APR 19  
 29 APR 24  
 30 APR 25  
 31 " 30  
 32 " 23  
 33 " 21  
 34 " 27  
 35 " 26  
 36 " 23  
 37 " 28  
 38 " 14  
 39 " 27  
 40 MAY 15  
 41 " 3  
 42 " 5  
 43 APR 24  
 44 " 21  
 45 MAY 15  
 46 APR 18  
 47 " 19  
 48 MAY 3  
 49 APR 24  
 50 " 13  
 51 " 2  
 52 " 30  
 53 " 9  
 54 " 21  
 55 " 13  
 56 " 17  
 57 " 11  
 58 " 13  
 59 " 25  
 60 " 23



1881 APR 23  
 1882 " 23  
 93 " 23  
 94 " 23  
 95 " 23  
 96 " 27  
 97 " 27  
 98 " 21  
 99 " 21  
 2000 APR 14  
 01 APR 29  
 02 APR 10  
 03 APR 24  
 04 APR 20  
 05 APR 18  
 06 MAR 31  
 07 APR 24  
 08 APR 24  
 09 APR 24  
 10 MAR 24  
 11 APR 21  
 2012 MAR 23  
 13 APR 15  
 14 APR 24  
 APR 22 2015  
 MAR 29 2016  
 APR 24 2017  
 APR 27 2018  
 APR 28 2019  
 APR 7 2020  
 APR 8 2021

# 1874 ICE OUT DATES PRESENT

1874 MAY 13	1894 APR. 24	1914 APR. 26	1934 APR. 23
75 " 6	95 " 21	15 " 15	35 " 25
76 " 11	96 " 27	16 " 22	36 " 21
77 APR 22	97 " 27	17 " 28	37 MAY 1
78 " 12	98 " 18	18 " 24	38 APR. 20
79 MAY 7	99 " 29	19 " 14	39 MAY 7
80 APR 22	1900 " 29	20 MAY 3	40 " 7
81 " 29	01 " 21	21 APR 8	41 APR. 15
82 MAY 1	02 " 10	22 " 17	42 " 21
83 " 2	03 " 11	23 " 28	43 " 28
84 APR. 26	04 MAY 3	24 " 21	44 MAY 2
85 MAY 2	05 APR. 22	25 " 14	45 APR. 9
86 APR. 24	06 " 26	26 MAY 3	46 " 11
87 MAY 6	07 " 30	27 APR. 16	47 " 23
88 " 10	08 " 26	28 " 27	48 " 10
89 APR. 16	09 " 27	29 " 26	49 " 11
90 " 26	10 " 6	30 " 14	50 " 27
91 " 28	11 " 29	31 " 12	51 " 15
92 " 18	12 " 25	32 " 21	52 " 20
93 MAY 8	13 " 23	33 " 29	53 " 10

04 APR 20  
 05 APR 18  
 06 MAR 31  
 07 APR 24  
 08 APR 24  
 09 APR 24  
 10 MAR 24  
 11 APR 21  
 2012 MAR 23  
 13 APR 15  
 14 APR 24  
 APR 22 2015  
 MAR 29 2016  
 APR 24 2017  
 APR 27 2018  
 APR 28 2019  
 APR 7 2020  
 APR 8 2021  
 2012 MAR 23  
 13 APR 15  
 14 APR 24  
 APR 22 2015  
 MAR 29 2016



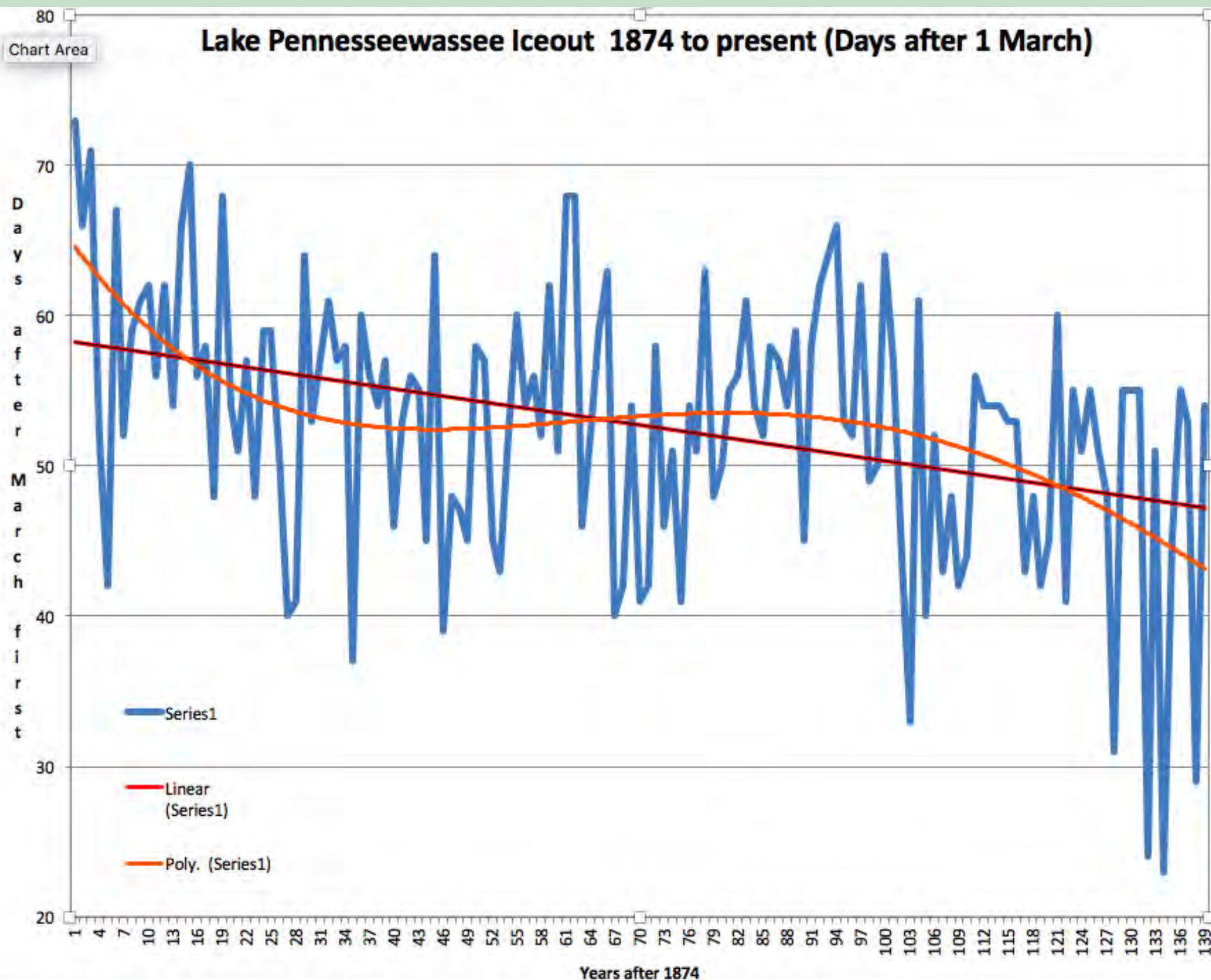
Lake Pennesseewassee Iceout 1874 to present (Days after 1 March)

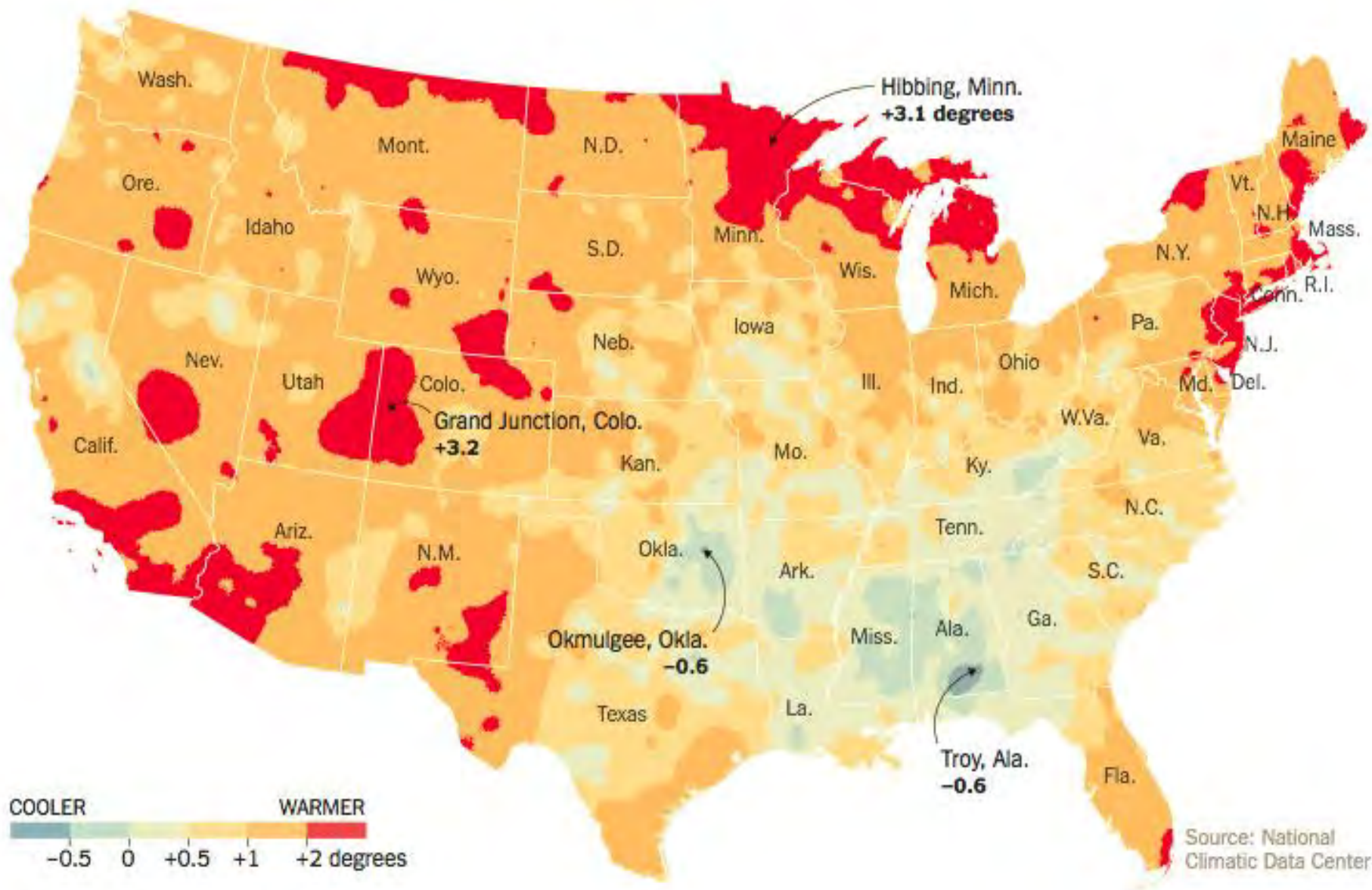
Chart Area

Days  
after  
March  
first

Series1  
Linear  
(Series1)  
Poly. (Series1)

Years after 1874





## Rising Temperatures

1991-2012 average temperature compared with 1901-1960 average



**FOOD**



**TRANSPORT**



**ENERGY**



**SHELTER**







# MAINE SOLAR FORUM

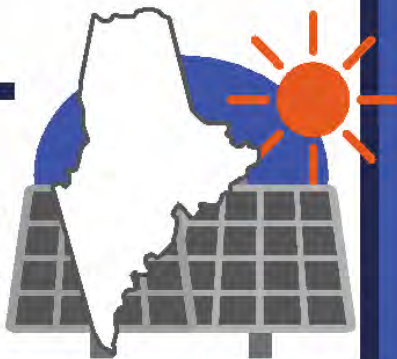
## The Future of Solar Energy in Maine

TUESDAY, JULY 26<sup>TH</sup> 6:30–8PM  
@ CEBE 447 MAIN STREET, NORWAY

### LEARN AND DISCUSS:

- the benefits of solar to Maine's economy
- incentives for current and future solar users
- next steps for increasing solar generating capacity in Maine

Participants will include Tim Schneider, Public Advocate for Maine; Vaughan Woodruff Insource Renewables and the chair of the Committee on Renewable Energy; the NRCM; representatives of the solar industry; and local and state legislators



The Center For An Ecology-Based Economy  
447 Main Street, Norway, Maine 04268  
207-739-2101 | [info@ecologybasedeconomy.org](mailto:info@ecologybasedeconomy.org)  
[www.ecologybasedeconomy.org](http://www.ecologybasedeconomy.org)



# START SOLAR NOW

## LEARN HOW SOLAR CAN WORK FOR YOU!

HANDS ON DEMOS OF  
EASY, PRACTICAL AND  
AFFORDABLE SOLAR  
SOLUTIONS

### LEARN ABOUT:

- Examples of PV modules
- Devices that provide independent power
- Battery systems and more



SATURDAY, JULY 23<sup>RD</sup>, 3–5PM  
CEBE IN THE COMMONS 447 MAIN STREET, NORWAY



CENTER FOR AN ECOLOGY-BASED ECONOMY  
[INFO@ECOLOGYBASEDECONOMY.ORG](mailto:INFO@ECOLOGYBASEDECONOMY.ORG) | 207.739.2101  
447 MAIN STREET NORWAY, MAINE



# COMMUNITY SOLAR FARM

POWER YOUR HOME OR BUSINESS



**Wednesday, Nov. 13th, 6:30pm**

**ReVision Energy** will present solar farm opportunities for our area at the

**Center for an Ecology-Based Economy**

The Commons, 447 Main St., Norway  
*(next to the Fare Share Co-op)*

**Learn how you can invest in this groundbreaking, locally-based, renewable energy project and help the Western Foothills move one step closer to energy independence.**



# SOLAR *in Your Community* CHALLENGE







COOPERATIVE  
DEVELOPMENT  
INSTITUTE

The Northeast Center  
for Cooperative Business

*Transforming  
Ownership of our  
Economy so that  
All People Can Meet  
their Basic Needs*

**[Ecologybasedeconomy.org](http://Ecologybasedeconomy.org), [cdi.coop](http://cdi.coop)**



C O M M U N I T Y

**BikeShare**

CENTER FOR AN ECOLOGY-BASED ECONOMY  
447 MAIN STREET, NORWAY

CALL 739-2101  
TO REGISTER  
AND BORROW  
A BIKE FOR  
**FREE**













**CEBC BikeShare**  
REGISTER at CEBC 736-  
ECOLOGYBASED.ORG/BIKESHARE 2101



# CEBE's WESTERN MAINE EV CHARGING NETWORK PROJECT



















A time for healing

Have you ever wondered about  
CHRISTIAN  
SCIENCE  
and what it is all about?

 **SPOKE FOLKS**  
COOPERATIVE  
**TRASH  
RECYCLING  
COMPOST**  
207-890-9776  
www.spokefolks.me











**TINY HOUSE  
DESIGN CHARRETTE**  
Thursday, August 26th  
5-9pm

We're building a tiny house  
right here in Norway, Maine!  
Come and join us.

#tinyhousenorwaymaine



On August 26th we will begin the process of designing a tiny house for a real client. You are welcome to join us in the process from the tractor trailer up. After we get it designed, we will build it in the month of October.

**Join the team!** This is a great way to learn how to build your own tiny house.



**CENTER FOR AN ECOLOGY-BASED ECONOMY**  
447 Main Street, Norway, Maine 04268  
**ECOLOGYBASEDECONOMY.ORG | 739-7101**



#tinyhousenorwaymaine

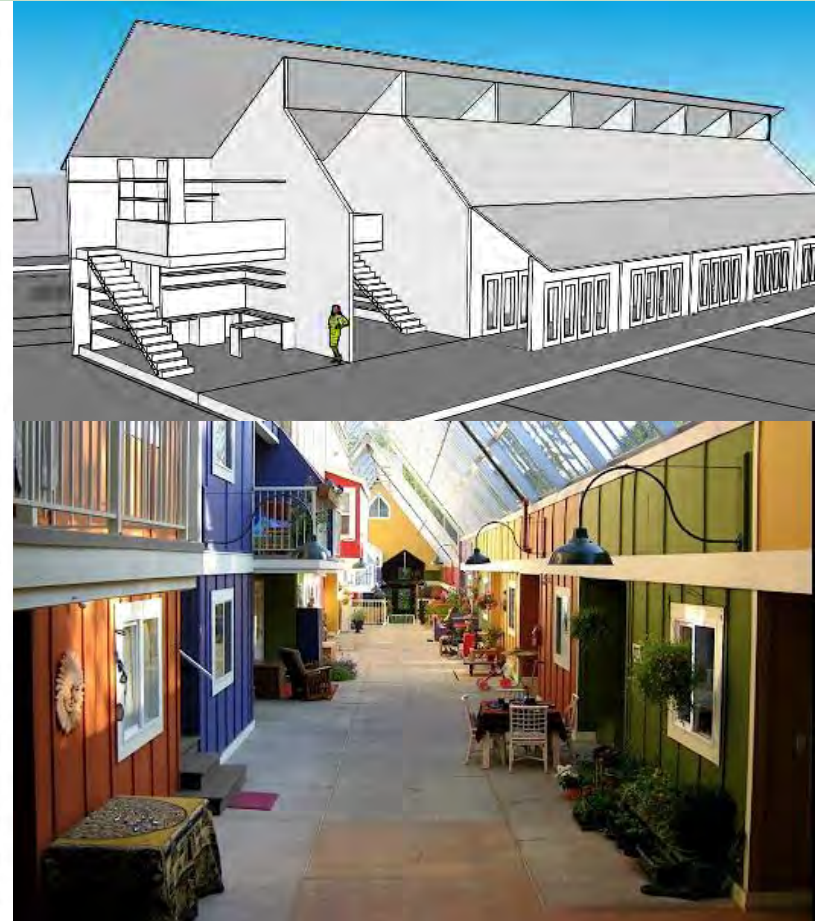








## A shared-ownership structure





## SATURDAY WORKSHOP SESSION 1

***AFFORDABLE,  
ACCESSIBLE,  
INTERGENERATIONAL,  
REGENERATIVE,  
DECOLONIZING,  
BEAUTIFUL,  
COOPERATIVE HOUSING  
HERE!***

**10-10:50AM**



# EDIBLE MAIN STREET

**Pick a little. Leave a lot.**

**FMI: Visit CEBC or call 739-2101**







# FOOTHILLS FOOD FESTIVAL

A decorative green vine with leaves and various vegetables, including a bell pepper, a cucumber, and a tomato, is positioned horizontally across the middle of the text.

CELEBRATING  
LOCAL FOOD

SATURDAY • AUGUST 12 • NORWAY



# ADCG COMMUNITY FOOD FOREST

Superior Area  
Existing Dogwood  
White Alder  
+ Garry's Elm  
Ramp

Vib Lantana → Wild Raisin  
Elderberry  
Aronia  
Sweet Gale (Myrica)  
Black Pussy Willow  
Witch Hazel  
Marsh willow  
Watercress

Planting on lawn

Linden (Basswood)

Pinus  
Nor Pine  
Mountain Laurel  
Highbush Blueberry  
Vib. (fr. pendula)  
Lupinus

Orchard Birds

Regina's Sparrow (Apple)  
- Cowbird  
- Mourning Dove  
- Yellow  
- White Crowned  
- House Finch  
- Song Sparrow  
- Goldfinch  
- Black Vireo  
- Garden Warbler  
- Foxglove  
- Lark  
- Forage  
- Winter Wren  
- Blue Jay

Ginseng  
Goldenseal?

Grapes in existing trees

Prune this area  
Back tree color

Succession Tree

Honeyberry (2) M + F  
Carnegie / May / Dogwood  
Robin Dogwood

Nettles  
Ramp  
Huckleberry  
Shrub  
Single

Strawberry / Raspberry  
Cherry / Sweet Cherry  
Rhubarb

Blueberry / Sweet Fern  
Allium Garlic Chives  
Yarrow  
Huckleberry

Almond with Sulphur Redness Pi  
Sawdust etc

Honey Cherry (2)  
Sweet Cherry (1)



























2030

VISION

COLLECTIVE POWER FOR CLIMATE JUSTICE

---





























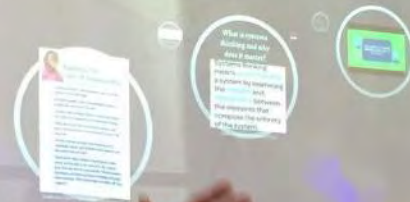








# CEBE Learning for Sustainability 2020 Workshop Series Systems Thinking- February 29









**#VOTE  
CLIMATE  
JUSTICE**  
NOW IS THE TIME  
   
[ecologybasedeconomy.org](http://ecologybasedeconomy.org)

MY FUTURE IS  
SLIPPING  
THROUGH MY  
FINGERTIPS 

People  
over  
Profit

TO CHANGE  
EVERYTHING  
WE NEED  
EVERYONE

Save our Home

KEEP  
IT  
IN  
THE  
GROUND

KEEP  
IT  
IN  
THE  
GROUND

KEEP  
IT  
IN  
THE  
GROUND

LOVE  
YOU  
MOM









# COMMUNITY- DRIVEN CLIMATE SOLUTIONS





# GETTING STARTED

Create a space for open conversations about climate change, held within the specific context of your community.

*Some Questions We Explored:*

- Starting with a group check-in: why are you here?
- How are folks feeling about climate change?
- What do people think about when they think about climate change?
- When folks think about climate change and the future of this community, what do they hope for?
- What other challenges does this community face and how do those challenges intersect with climate change? What opportunities might exist to multi-solve?
- Who is missing from the conversation? How can we broaden participation?
- What do we want to do next?
- What do we need to know? What other resources do we need to get started?

***Have fun! We ate a lot of really good food in those initial meetings (and still do!).***





- Identify a compelling goal and narrative
- Map your community - identify formal and informal power structures and influencers
- Build Partnerships
- Start with visible, tangible, participatory projects to motivate future engagement





- Build a team
- Identify your relationship with long-term planning
- Check-in with the community





# IMPORTANT RELATIONSHIPS

- Local government
- County leadership
- Local school system
- Youth
- Local organizations, especially those concerned with the future of the community
- Contractors (building performance contractors, solar contractors, heat pump technicians, plumbers, electricians)
- Legal expertise
- Fundraising expertise
- Energy expertise
- Efficiency Maine Trust
- Local utility company
- Public Utility Commission (PUC)
- Governor's Office of Policy Innovation and the Future
- University of Maine
- Any other local colleges (for ACTT, the relationship with the College of the Atlantic has been very impactful)
- **Other community-driven climate solutions initiatives in the state!**



## SOME PROJECT EXAMPLES

- Solarize MDI
- Weatherize MDI
- Electrify MDI
- Downeast and Blue Hill Peninsula EV charging projects
- Mount Desert Island High School rooftop solar array
- Bar Harbor community-owned solar array
- Tremont municipal solar array
- Sustainable MDI (sustainability pledge for local businesses)
- Educational series
- Internship program
- Climate action planning support for the towns
- Service Provider support for the towns in signing up for and applying for funding from the Community Resilience Partnership
- Guide to solar ownership for Homeowners, Businesses, and Nonprofits
- Financial modeling around solar ownership for municipalities
- Electric Bus for MDI High School





## SOME CURRENT & UPCOMING WORK

- Cooperative solar ownership model research and development
- Comprehensive building solutions program research and development (encompassing weatherization, electrification, and solar with financing model)
- Carbon Reduction Commitment (greenhouse gas emissions commitment and support for local businesses)
- Bar Harbor municipal solar array
- Community Energizing Campaign
- Expanded Internship Program
- Smart grid piloting on MDI





## CURRENT CHALLENGES

- Finding financing models that increase access to solutions and to community ownership of solutions
- Workforce shortage for needed contractors and technicians
- Responsible, community-driven siting of clean energy
- Interconnection of clean energy to the grid
- Building broader networks across the community



# INTERGENERATIONAL CLIMATE WORK

- Finding a collaboration model through which the work is changed by the contributions of young people
- Ensuring youth are provided meaningful avenues for participation, not participation as tokenism
- Compensating young people for their time
- Youth having decision-making power to shape the work





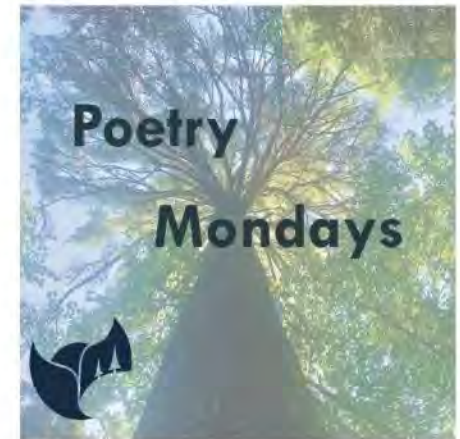
# MAKING THE WORK SUSTAINABLE

- Balancing sense of urgency with the need for rest and rejuvenation and being realistic in your pace of work
- Building in space to honor the psychological and emotional aspects of climate work
- Making the work celebratory, joyful, creative, and collaborative (when more of us hold pieces of the puzzle, it makes the work more sustainable for each of us)

## Climate Change and Mental Health A Psychological Toolkit

Wednesday, March 2, 6:00 p.m.

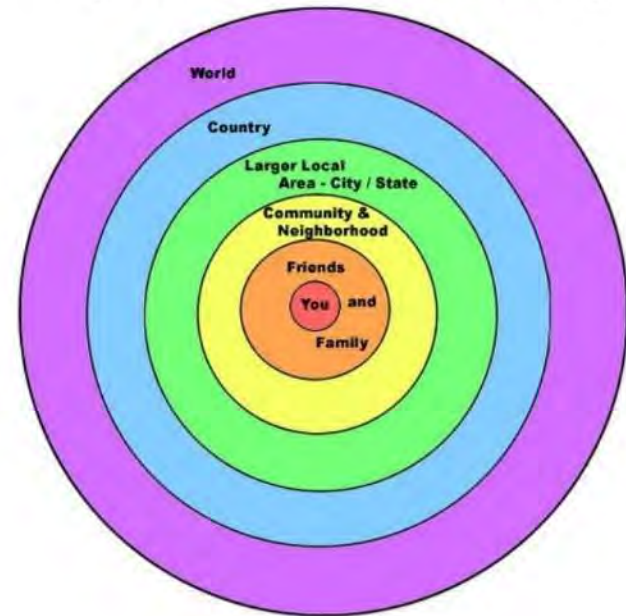
Cohosted by A Climate to Thrive  
& The Center for Ecology Based Economy



# FACILITATING COMMUNITY EMPOWERMENT



**Spheres of Influence and Understanding**



Venn Diagram of Climate Action by Dr. Ayana Elizabeth Johnson -  
[ayanaelizabeth.com/climatevenn](http://ayanaelizabeth.com/climatevenn)



