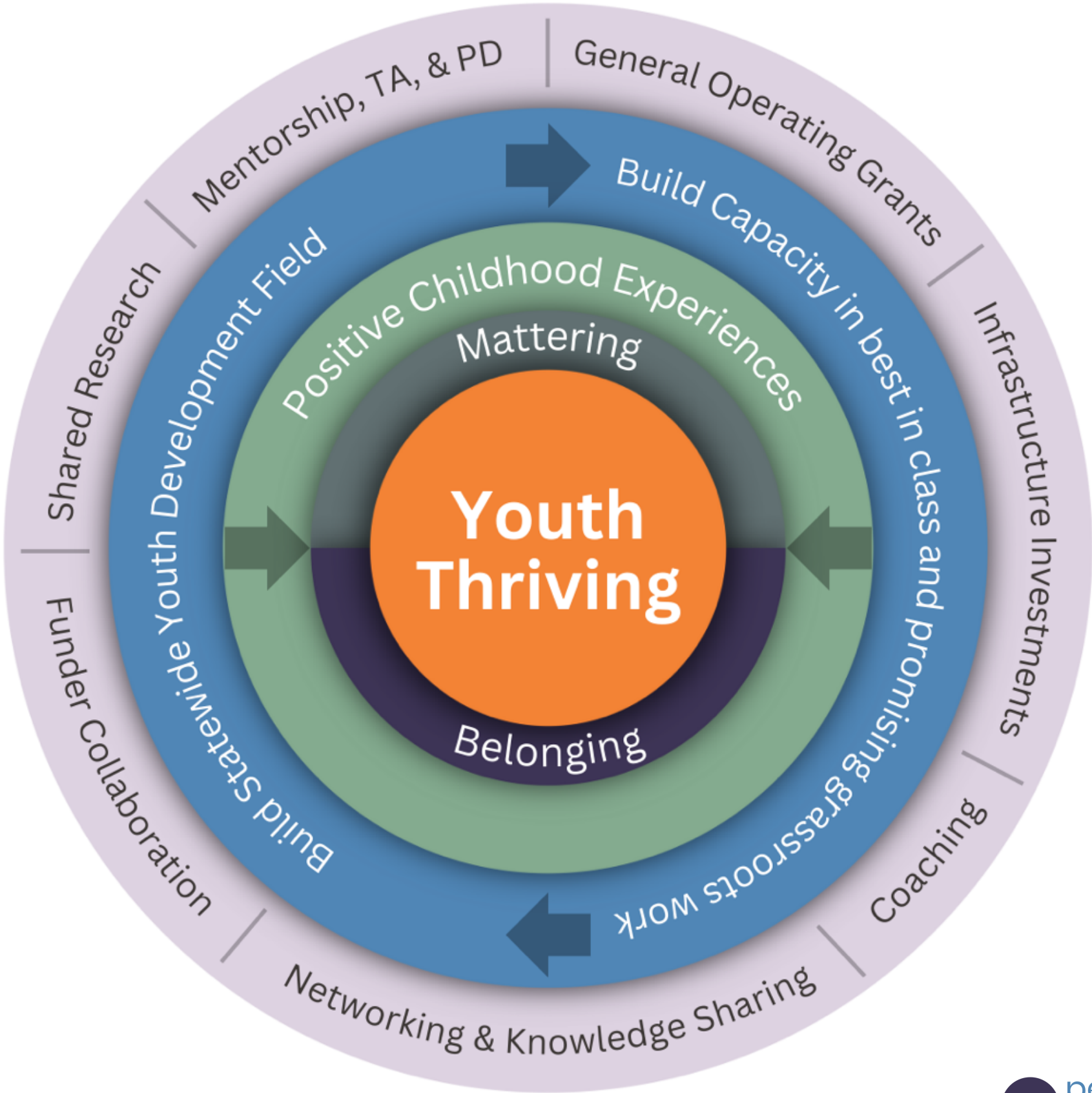


Strategic Approach to Youth Development in Maine*

*Co-designed by Youth Development Leaders at PAF Field Gatherings 2022-23



PAF Peer Learning Cohort 2.0

Key Partners

Tree Street Youth Rural Youth Institute OUT Maine

Participating Grantees

1. Alford Youth and Community Center - Waterville
2. Augusta Teen Center Boys and Girls Club - Augusta
3. Bangor Families Forward - Bangor
4. Cultivating Community - Portland
5. Eastern Woodlands Rematriation Collective - Wabanaki Communities
6. Family Futures Downeast - Washington County
7. Healthy Community Coalition - Franklin County
8. Hearty Roots - Lincoln and Waldo County
9. Katahdin Learning Project - Katahdin Region
10. Maine Inside Out - Lewiston, Portland
11. Maine Youth Alliance - Belfast Area
12. Mano en Mano - Milbridge
13. Midcoast Youth Center - Bath
14. Olympia Snowe's Women's Leadership Institute - Statewide
15. Our Place Portland - Portland

Participating Grantees (cont.)

16. Portland Community Squash - Portland
17. Rivers & Roads - Fryeburg
18. Rural Aspiration Project - Rim Counties
19. The Landing Place - Rockland, Knox County
20. The Telling Room - Portland & Statewide
21. Trekkers - Rockland, Knox County
22. Wabanaki Public Health and Wellness - Wabanaki Communities

Additional Relevant Grantees

1. Apex Youth Connection - Biddeford
2. Hardy Girls - Statewide
3. Maine Resilience Building Network - Statewide
4. Wabanaki Youth in Science - Wabanaki Communities
5. Yellow Tulip Project - Statewide

Effective Field Practices

Evidence based practices in the youth development field in Maine that encompass positive childhood experiences and positive youth development.

1. Welcoming and affirming experiences
2. Connect with land and nature
3. Offer plentiful food
4. Social emotional learning and non-clinical mental health
5. Durable relationships with families, schools, and others.
6. Authentic leadership and skill building
7. Meaningful opportunities and networks
8. Quality, long-term relationships (with peers and adults) that span transitions
9. Educational credit and/or stipends
10. Co-design programs

Opiod Abatement Strategies (Exhibit E)

9. School-based or youth-focused programs or strategies that have demonstrated effectiveness in preventing drug misuse and seem likely to be effective in preventing the uptake and use of opioids.
10. Create or support community-based education or intervention services for families, youth, and adolescents at risk for OUD and any co-occurring SUD/MH conditions.
11. Support evidence-informed programs or curricula to address mental health needs of young people who may be at risk of misusing opioids or other drugs, including emotional modulation and resilience skills.
12. Support greater access to mental health services and supports for young people, including services and supports provided by school nurses, behavioral health workers or other school staff, to address mental health needs in young people that (when not properly addressed) increase the risk of opioid or another drug misuse.

Connections to the Maine Opioid Response Strategic Plan

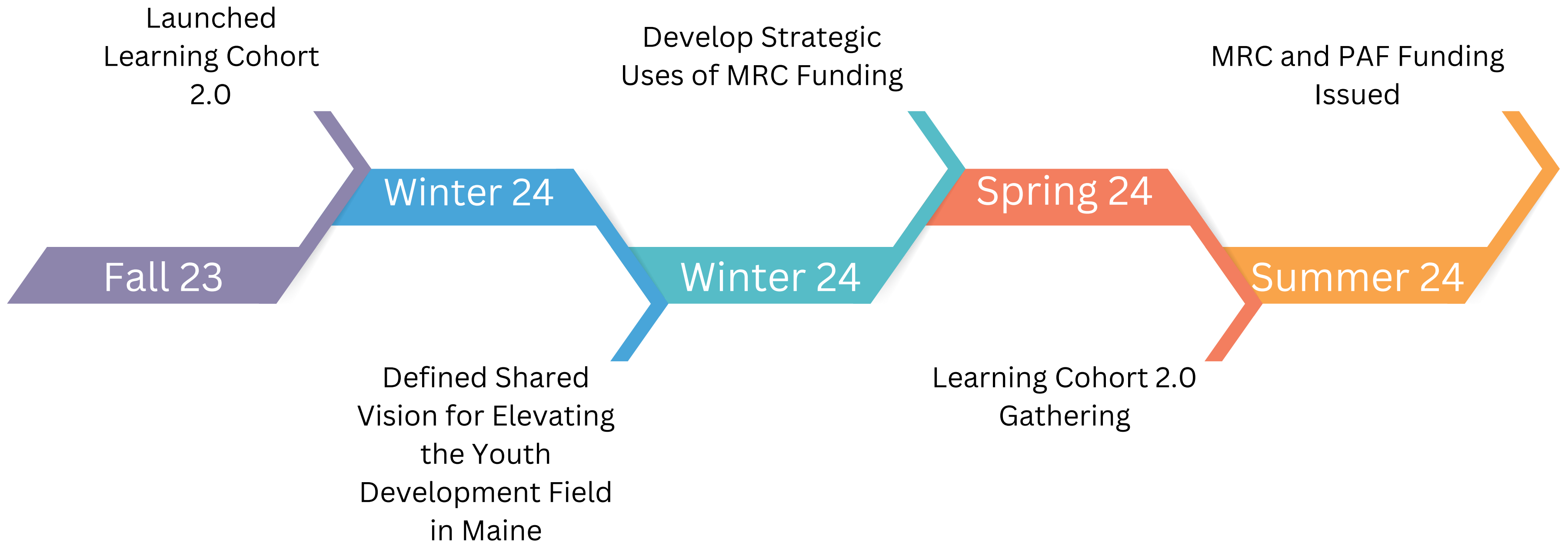
STRATEGY #3: Support community-based and faith-based organizations and networks, prioritizing populations that are disproportionately impacted by substance use disorder and opioid use disorder

STRATEGY #9: Expand behavioral health support, life skills, and resilience-building capacity and programming for all youth in all schools

STRATEGY #10: Support policies and initiatives designed to prevent the early use of addictive substances by children, youth, and young adults

STRATEGY #11: Expand local partnerships that educate and engage youth, families, and communities in primary prevention initiatives to include every community in Maine

STRATEGY #12: Invest in secondary prevention efforts that identify and support youth and young adults at higher risk of developing a substance use disorder



Elevating the Youth Development Field

Five Guiding Themes



Theme 1 - Youth Development Leaders Support

Measures:

1. Increase tenure of key decision makers and program staff leadership in youth development in Maine beyond the current 1.5 year average
2. Youth development executives can name a field mentor/coach they work with regularly
3. There is a visible menu of staff development opportunities with funding/resources for youth development professionals to participate



Theme 2 - Youth Experiences

Measure:

1. Every youth can identify a safe/trusted environment (i.e. a third place) and person outside their house or school



Theme 3 - Funding

Measure:

1. Ongoing, intentional funding for youth development including larger, multiyear, general operating support



Theme 4 - Equitable Access

Measure:

1. Every youth in Maine has access to safe, affirming community-based youth development organizations, programs, and people without financial barriers



Theme 5 - Bridging Gaps

Measure:

1. Community-based youth development leaders partner with schools and others in young people's lives to support and champion youth.



Current Budget Principles

February 2024

- Flexible and layered across the five themes
- Sustainability minded
- Majority of funding towards capacity building, training, and leadership development
- Limited, but meaningful, funding towards including organizations outside of current cohort
- Limited, but meaningful, funding for collaboration and innovation pilots
- Limited funding towards research
- 1% contingency (\$11,500) of funding for administrative costs

Examples of Uses

Funding Focus	Guiding Theme	Examples
Capacity Building	2 – Youth Experience 3 – Funding 4 – Equitable Access	Transportation, finance, grant writing, capital campaign support, emergency financial assistance
Training	1 – Youth Development Leadership Support 2 – Youth Experience 4 – Equitable Access	First Aid (FA)/CPR, Narcan Training, Mental Health FA, Wilderness FA, Positive Childhood Experiences, Welcoming and Affirming Organizations, Social Emotional Learning & Non-Clinical Mental Health. Some off the shelf, some to be developed
Leadership Development	1 – Youth Development Leadership Support	Mentorship, coaching, peer leaders/youth stipends, participatory grantmaking stipends, etc.
Expanding Opportunity for Inclusion	2 – Youth Experience 4 – Equitable Access	Grants for organizations outside of current PAF grantees
Pilots for Partnership and Innovation	2 – Youth Experience 4 – Equitable Access 5 – Bridging Gaps	Org & School Partnerships, Org & Family Partnerships
Research	2 – Youth Experience 4 – Equitable Access	Statewide gaps, national benchmarking, Collaborative Research, Evaluators-in-residence
Admin	N/A	Legal, accounting, etc.