

# DOWNEAST & ACADIA

## REGION



Lat 44.826707, Lon -68.392087

## DIRECTIONS

Amherst Mountains Community Forest is located off of Route 9 (Airline Rd.) east of Bangor and just west of Amherst and Route 181/Mariaville Rd. Look for the Public Lands sign where the Ducktail Pond Rd. (AKA: 22-00-0 Rd.) meets Route 9. The three trailheads may be accessed from this south entry. Bald Bluff Trailhead may also be accessed from the north off the 22-00-0 Rd.

## CONTACTS

Maine Bureau of Parks and Lands  
Eastern Region Public Lands Office  
106 Hogan Rd., Suite 5  
Bangor, ME 04401  
207-941-4412  
www.maine.gov/dacf/publiclands  
www.maine.gov/amherst

## TRAVEL INFORMATION

Region: www.downeastacadia.com  
Maine: www.visitmaine.com



## SERVICES & FACILITIES

- Two campsites, each with fire ring, picnic table and privy.
  - Ducktail Pond: Lat 44.858632, Lon -68.399116
  - Partridge Pond: Lat 44.859174, Lon -68.400307
- Brook trout fishery - special rules apply.
- 4.8 miles of hiking trails include the:
  - Loop offered by the Bald Bluff Trail, and
  - Trails to both Partridge and Ducktail Ponds
- Shared-use roads open to ATV and bicycle riders.



www.MaineTrail Finder.com



Get Map at  
www.avenzamaps.com

2019

All photos by Ben Clark.

# AMHERST MOUNTAINS COMMUNITY FOREST

## GUIDE & MAP

Backcountry fishing, camping, and hiking close to Bangor.



www.parksandlands.com

## OVERVIEW

Amherst Mountains Community Forest is a 4,974-acre Public Lands parcel with recreation trails and ecologically important forestland surrounding six ponds in the town of Amherst. Wildlife, including peregrine falcons, brook trout, deer, bear, partridge, and woodcock, thrive here; and thousands of migratory birds arrive each spring to nest on these lands. Secluded remote pond camping, hiking, snowmobiling, and ATVing are available here.

Forest management on the property is practiced in partnership with the Town of Amherst. The Bureau's forest practices are third-party certified by two independent standards: the Forest Stewardship Council® and the Sustainable Forestry Initiative®.



## PARTNERS AND SUPPORTERS

The State of Maine's Bureau of Parks and Lands purchased Amherst Mts. Community Forest in 2009, with help and funding from the:

- Forest Legacy Program and,
- Land for Maine's Future (LMF)



The property is managed through a unique state-municipal-private partnership. The Bureau of Parks and Lands owns the property but it is managed jointly with the Town of Amherst, which receives assistance from the Forest Society of Maine.

RECREATIONAL TRAILS PROGRAM This brochure was made possible in part by funding assistance through the Federal Highway Administration's Recreational Trails Program (RTP), administered by the Maine Bureau of Parks and Lands.



## WHEN TO VISIT

Amherst Mountains Community Forest is open year-round. Be prepared for changing conditions and take extra care during the winter months.

[www.maine.gov/amherst](http://www.maine.gov/amherst)

- Spring** Birdwatchers keep a lookout for the arrival of migratory birds.
- Summer** Anglers fish for brook trout. Special rules apply. Visit [www.maine.gov/ifw](http://www.maine.gov/ifw) for fishing license and season information. Hikers enjoy the views to Acadia afforded at several of the overlooks. ATV and bicycle riders make use of the shared-use Ducktail Pond Road/22-00-0 Rd.
- Autumn** Fall foliage can be viewed from the water or trail. Typical view time is mid-September through first week in October. For foliage reports visit: [MaineFoliage.com](http://MaineFoliage.com) Wear blaze orange during hunting season.
- Winter** Snowmobile riders pass through along Ducktail Road/22-00-0 Rd. when it is not plowed.

## VISITOR RULES

- Fires** Kindle fires only in authorized campsites with fire rings. Do not cut live vegetation. [www.maine.gov/forestpests](http://www.maine.gov/forestpests)
- Pets** Pets in campsites must be leashed and attended; outside of campsites, pets must be under control.
- Trash** Carry out all trash.
- Fishing** All those fishing must have a valid license and review the State's open water fishing regulations. Anglers are asked to use lead-free sinkers and jigs to prevent metal poisoning of loons, eagles and other wildlife. [www.maine.gov/ifw/](http://www.maine.gov/ifw/)
- Hunting** Although hunting is allowed in season, do not discharge weapons within 300 feet of any picnic, camping, or parking area, marked hiking trail or other developed area. Hunting license and season information is available at [www.maine.gov/ifw/](http://www.maine.gov/ifw/)
- Limit of Stay** Campers may not exceed a 14-day stay in a 45-day period
- Power Equipment** Use no chainsaws, generators or other power equipment around campsites.
- Abandoned Property** BPL staff may take custody of any personal property left unattended for more than 3 days (unless advance written permission is given).

## Amherst Mountains Community Forest

### Trails and Interest Points

- Hiking trail
- ATV on shared-use road
- P** Parking
- A** Tent site (Number of sites)
- ⚙** Picnic area
- 👁** Overlook
- 🚗** Transportation
- Secondary road, Street
- ▭ Gravel road

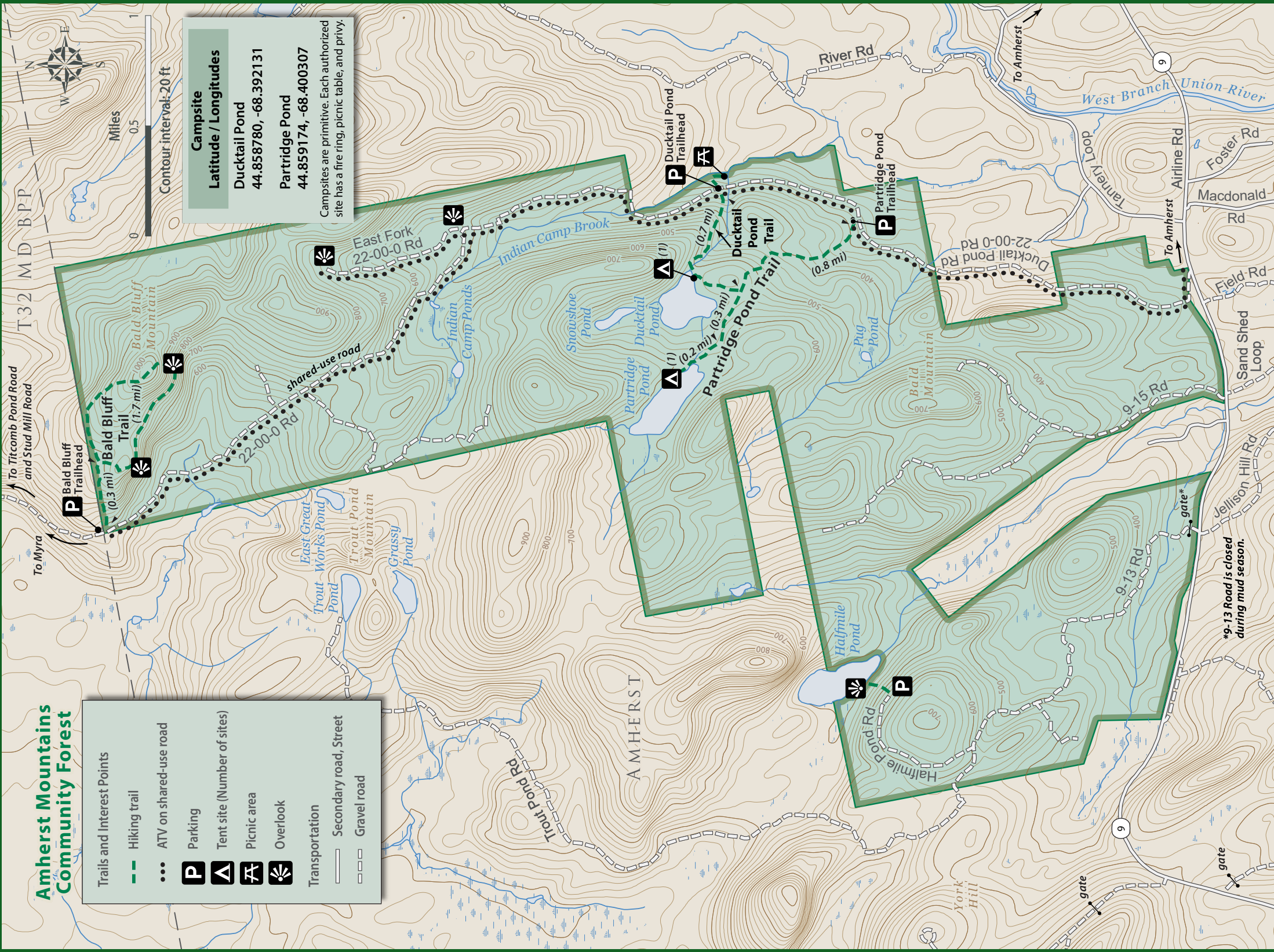
### Campsite

#### Latitude / Longitudes

**Ducktail Pond**  
44.858780, -68.392131

**Partridge Pond**  
44.859174, -68.400307

Campsites are primitive. Each authorized site has a fire ring, picnic table, and privy.



## TRAILS

**Bald Bluff Trail** (easy to moderate, 2-mile spur & loop): Begins and ends at the trailhead at the northwest corner of the lands off the 22-00-0 Rd. Follow the spur from the trailhead for 0.3 miles and a gain of 180-ft elevation to the 1.7 mile loop. Two scenic viewpoints and the quiet, remote feel make this a very rewarding hike.

**Ducktail Pond Trail** (moderate, 0.7 miles): Provides access to Ducktail Pond and campsite at the half-mile mark of the trail. Continue 0.25-miles past the pond, as the trail turns southward, to connect to the Partridge Pond Trail.

**Halfmile Pond Trail** (moderate, 0.1 miles): A short hike down to the pond overlook. Note that road to parking is closed during mud season.

**Partridge Pond Trail** (moderate, 1.7 miles): Provides access to Partridge Pond and a campsite in 1.3 miles. At 0.8 miles the trail intersects the Ducktail Pond Trail. At 1.1 mile the trail forks: the right fork ends at the Partridge Pond and campsite in 0.2 miles; the left fork continues for 0.6 miles on the west side of Partridge Pond before it dead ends.

## ATV

riding is allowed on the 22-00-0 Rd./Ducktail Pond Road. ATV riders should be on the lookout for hikers, bikers, and cars that may use the road as well. For more information about ATV trails contact local clubs at [www.atvMaine.org](http://www.atvMaine.org). The Bureau of Parks and Lands Off Road Vehicle office may be reached at (207) 287-2751, and at [www.maine.gov/dacf/atv](http://www.maine.gov/dacf/atv) and [www.maine.gov/dacf/snowmobile](http://www.maine.gov/dacf/snowmobile).

## NEARBY DESTINATIONS

The Amherst Community Forest is in Maine's Downeast & Acadia region. Other destinations within this area include:

- **Duck Lake Public Land** west of Grand Lake Stream encompasses 29,000 acres of woods and lakefront offering backcountry camping and fishing. [www.maine.gov/ducklake](http://www.maine.gov/ducklake)
- **Donnell Pond Public Land** more than 14,000 acres of remote forested land with crystal clear lakes, secluded ponds, and mountains with panoramic views. Located between Franklin and Cherryfield. [www.maine.gov/donnellpond](http://www.maine.gov/donnellpond)
- **Lamoine State Park** offers visitors a 62-site campground with amenities close to Acadia National Park. [www.maine.gov/lamoine](http://www.maine.gov/lamoine)