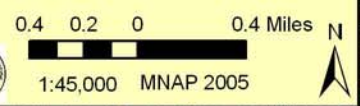
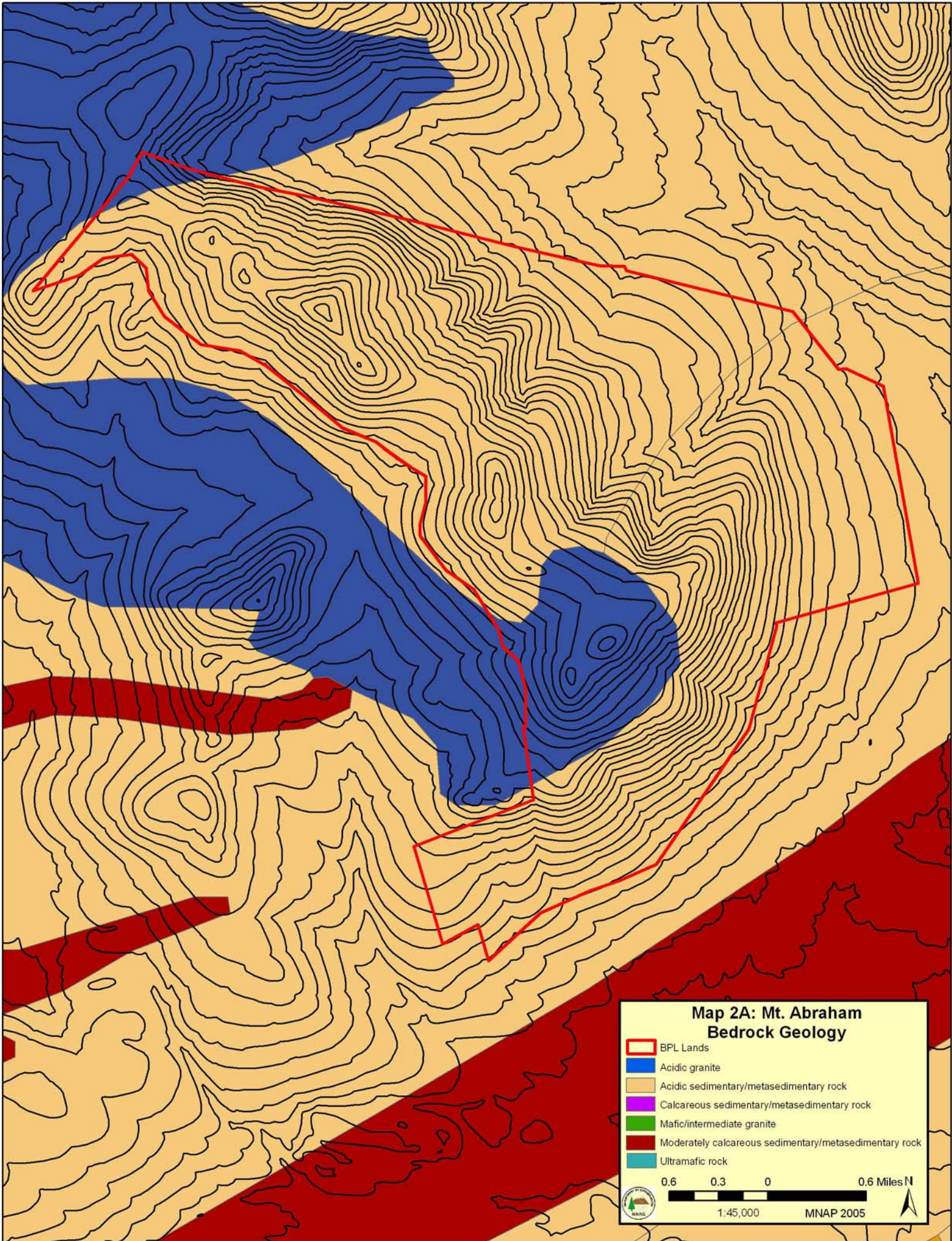




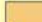




### Map 1: Mt. Abraham Conservation Land

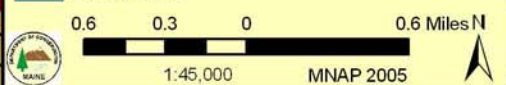
-  BPL Lands
-  Conservation Land
-  Ecological Reserve

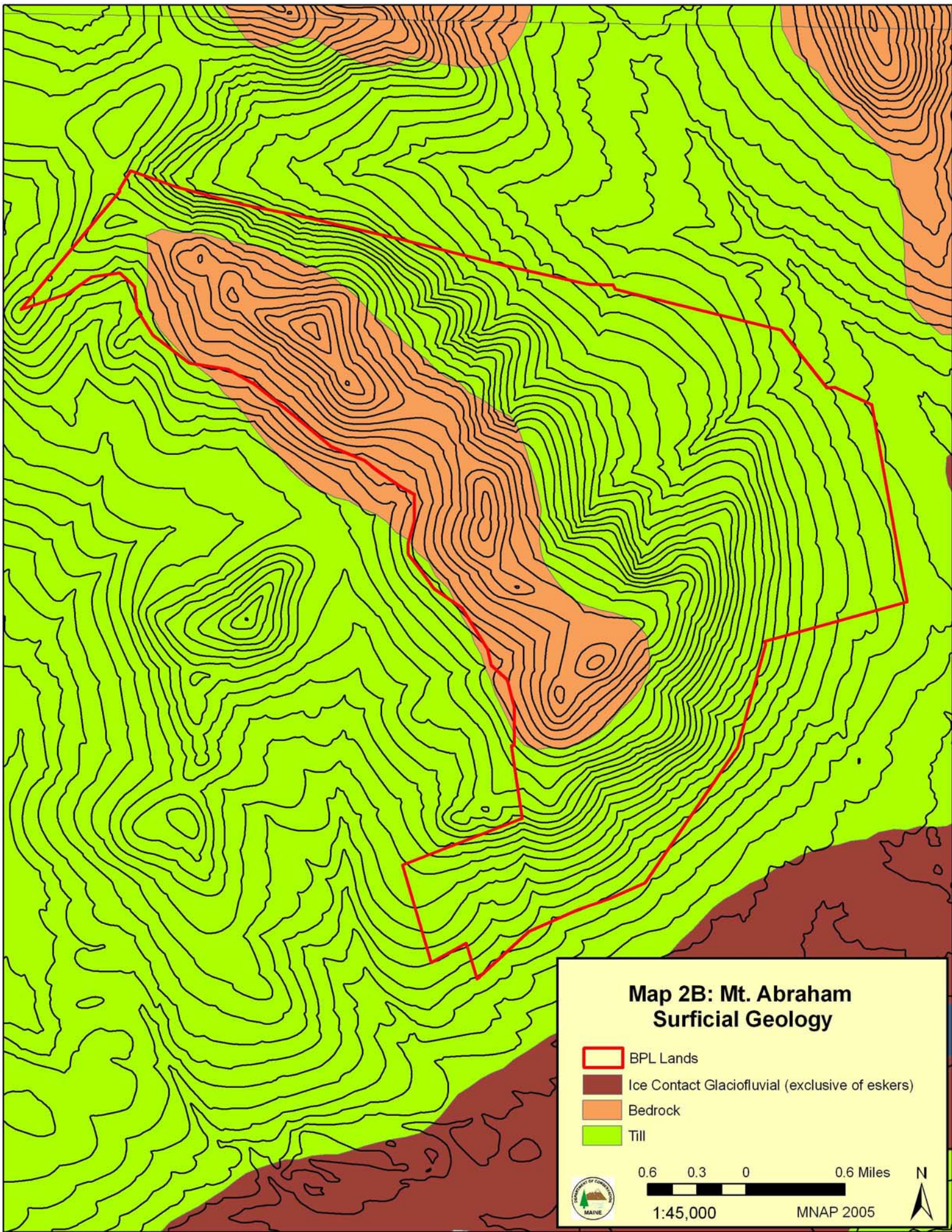


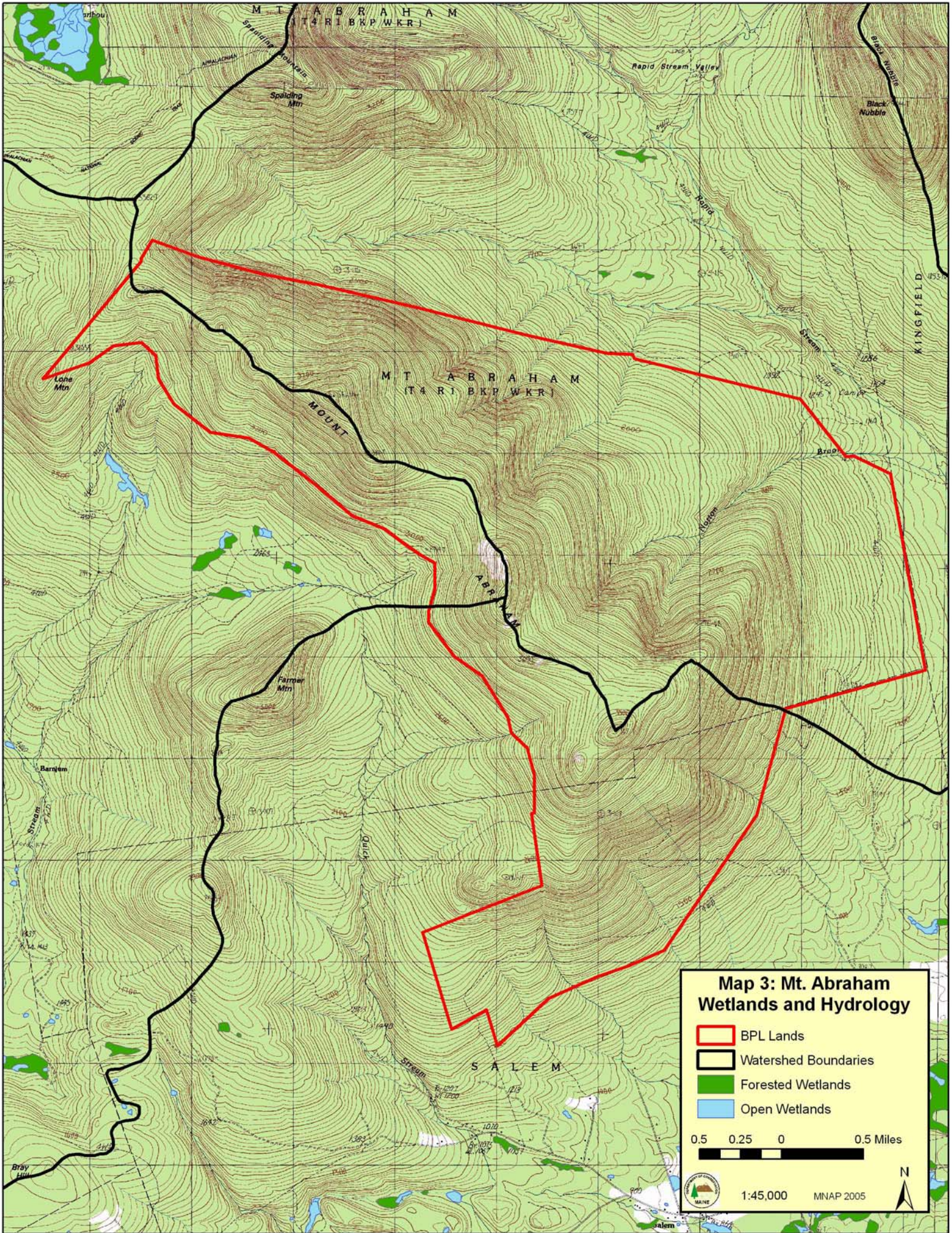


### Map 2A: Mt. Abraham Bedrock Geology

-  BPL Lands
-  Acidic granite
-  Acidic sedimentary/metasedimentary rock
-  Calcareous sedimentary/metasedimentary rock
-  Mafic/intermediate granite
-  Moderately calcareous sedimentary/metasedimentary rock
-  Ultramafic rock







M T A B R A H A M  
(T 4 R I B K P W K R)

Spalding Mtn

Rapid Stream Valley

Black Nubble

KINGFIELD

M T A B R A H A M  
(T 4 R I B K P W K R)

MOUNT

A B R A H A M

Farmer Mtn



S A L E M

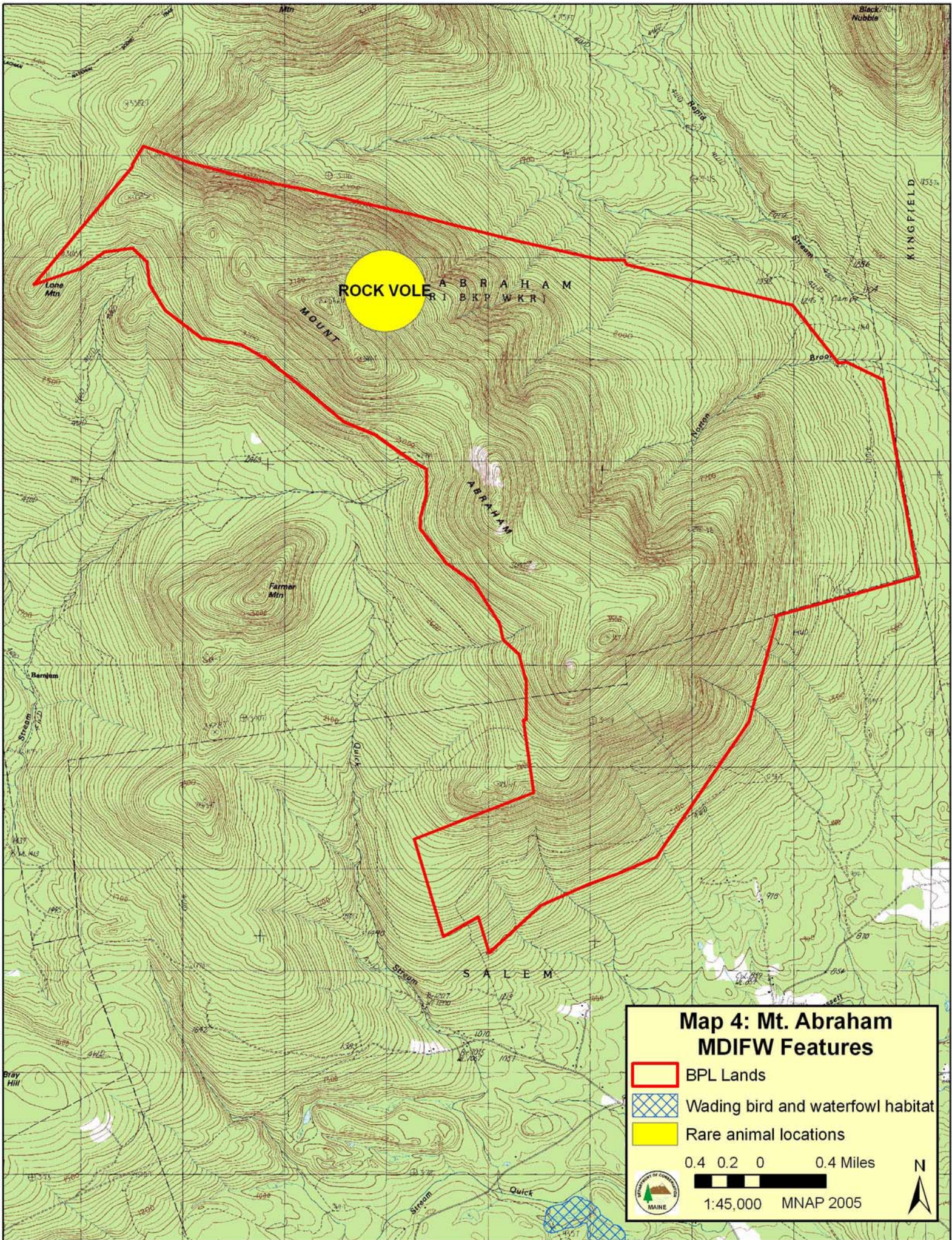
### Map 3: Mt. Abraham Wetlands and Hydrology

- BPL Lands
- Watershed Boundaries
- Forested Wetlands
- Open Wetlands

0.5 0.25 0 0.5 Miles




1:45,000 MNAP 2005





**ROCK VOLE**

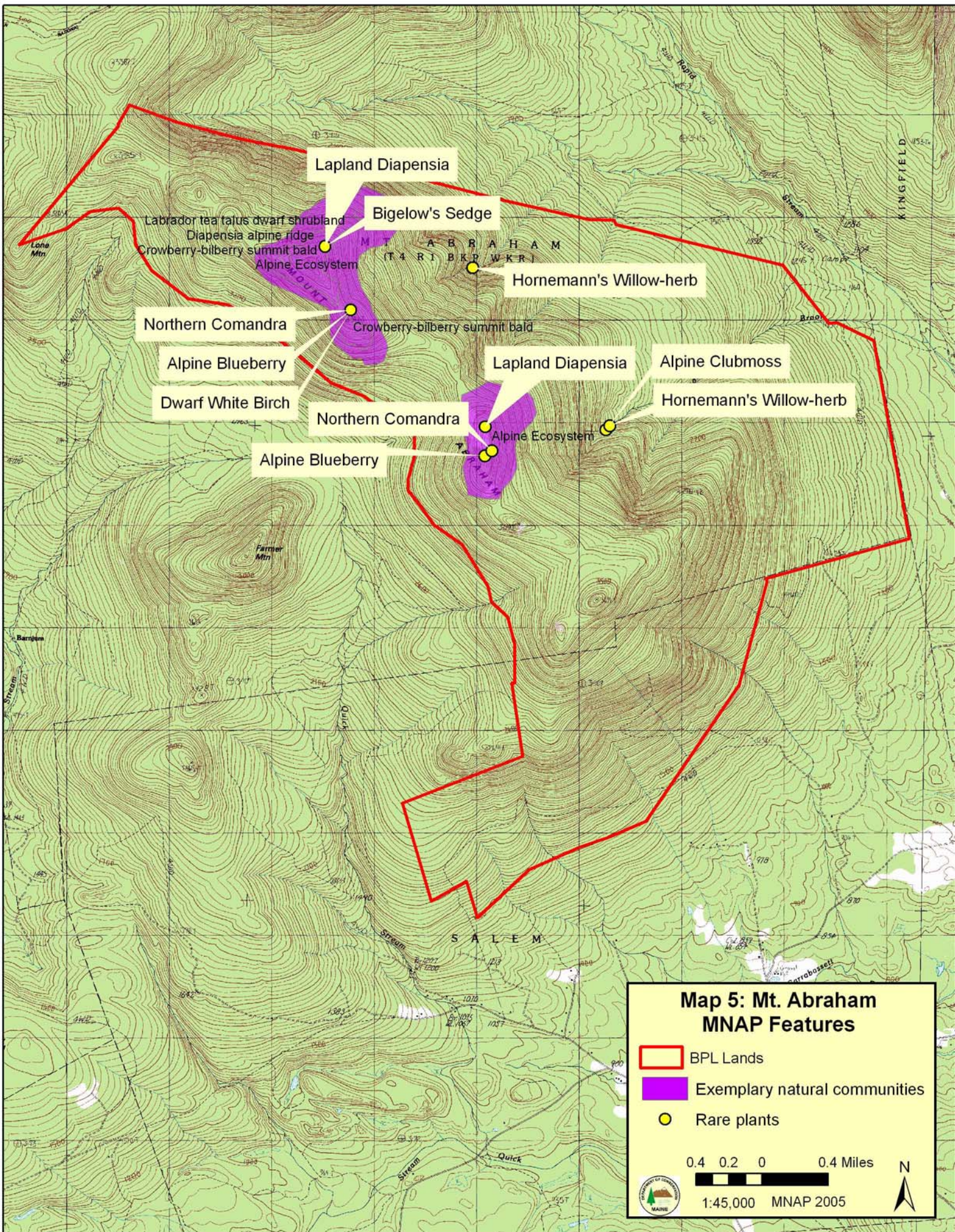
**Map 4: Mt. Abraham MDIFW Features**

-  BPL Lands
-  Wading bird and waterfowl habitat
-  Rare animal locations

0.4 0.2 0 0.4 Miles

 1:45,000 MNAP 2005





Lapland Diapensia

Labrador tea tatus dwarf shrubland  
Diapensia alpine ridge  
Crowberry-bilberry summit bald  
Alpine Ecosystem

Bigelow's Sedge

Hornemann's Willow-herb

Northern Comandra

Crowberry-bilberry summit bald

Alpine Blueberry

Lapland Diapensia

Alpine Clubmoss

Dwarf White Birch

Northern Comandra

Alpine Ecosystem

Hornemann's Willow-herb

Alpine Blueberry

**Map 5: Mt. Abraham  
MNAP Features**

- BPL Lands
- Exemplary natural communities
- Rare plants

0.4 0.2 0 0.4 Miles



1:45,000 MNAP 2005

