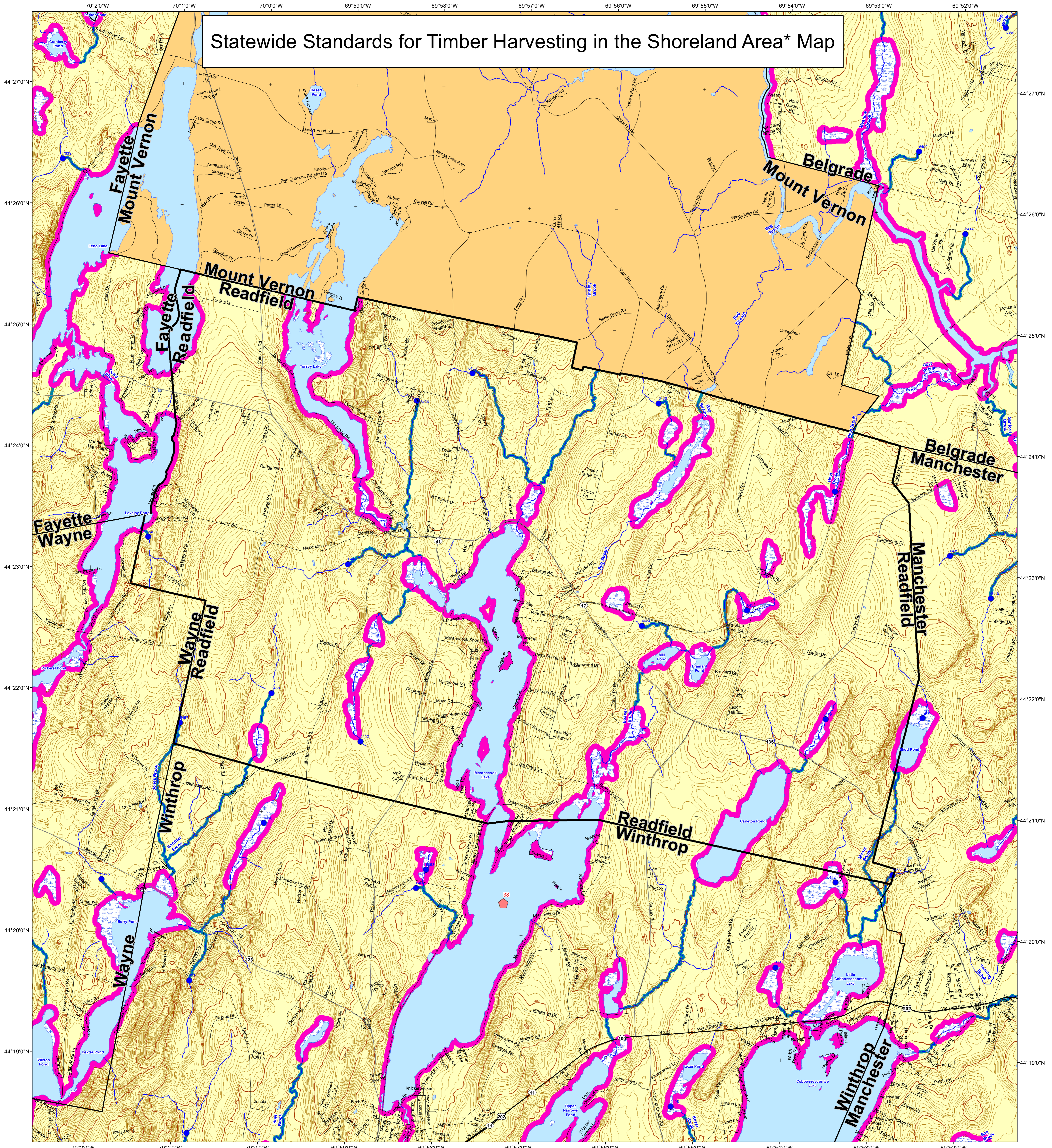


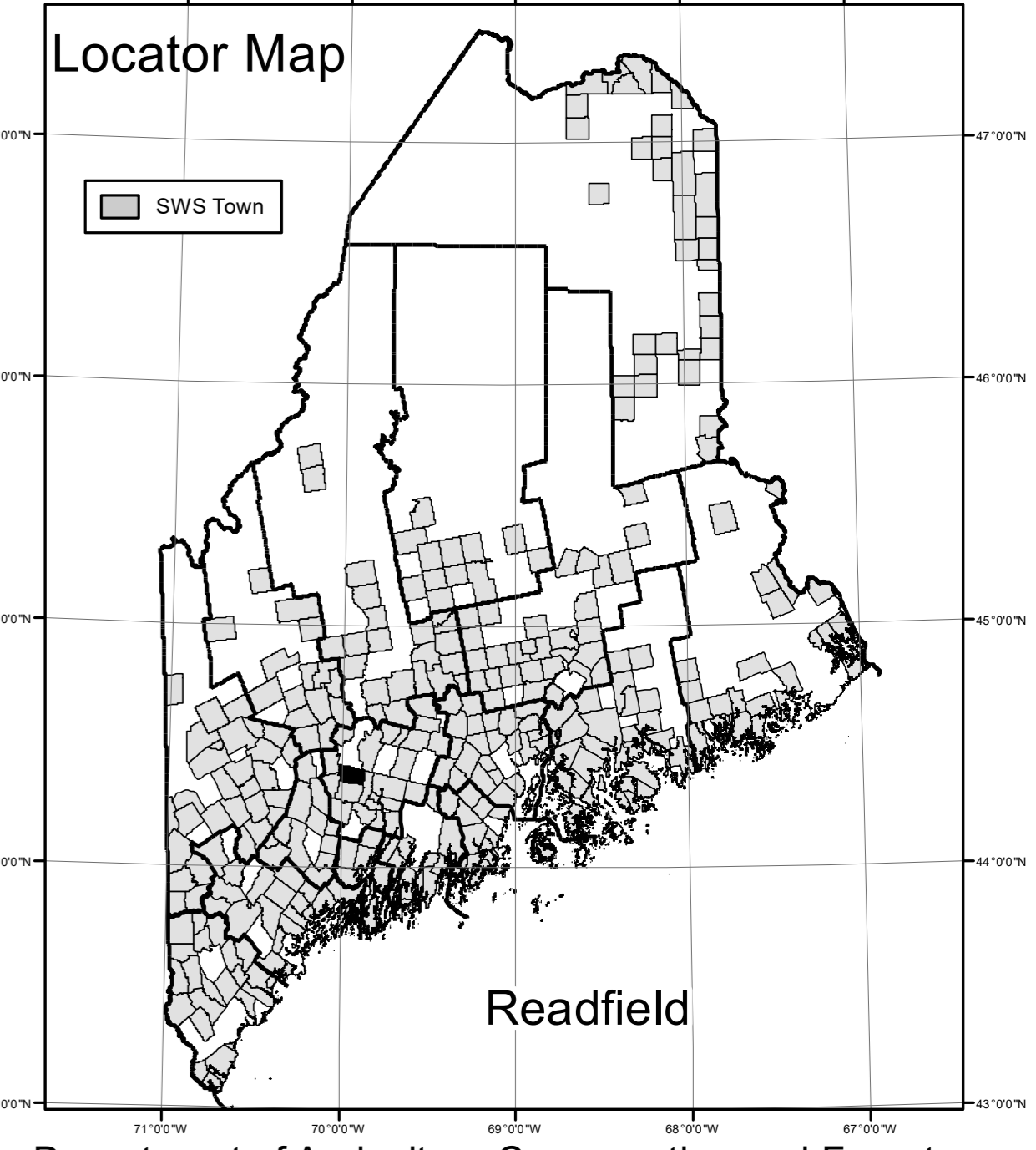
Statewide Standards for Timber Harvesting in the Shoreland Area* Map



This map is **ADVISORY**, for planning purposes only. Actual ground conditions and water body locations determine where and how MFS timber harvesting rules apply. Contact the MFS for additional information/assistance from a MFS Forester.

Forest Operation Notification & Shoreland Area* Map

Adoption Date
10/7/2009



Wetlands

- Non-forested Wetlands Greater Than 10 acres (Lacustrine, Palustrine)
- Emergent or Marine Wetland

Drainage Points

- 300 Acre Drainage Point (start of the 75 ft buffer)
- 25 Square Mile Drainage Point (start of the 250 ft buffer)

Habitat

- Essential Wildlife Habitat (Least Tern, Roseate Tern, Piping Plover)

Readfield

- SWS Town
- FON Town/DEP Standards apply (SWS Rules do not apply)
- Outside Maine
- LUPC - Unorganized or Deorganized Town

Buffers

- 250 Foot Buffer Zones
 - Great Ponds
 - Non-forested Wetlands greater than 10 acres
 - Rivers below the 25 square mile drainage point
 - Coastal Wetlands
 - Tidal Waters
 - Essential Wildlife Habitat (Least Tern, Roseate Tern, Piping Plover)
- 75 Foot Buffer Zones - Streams between the 300 acre drainage point and the 25 square mile drainage point
- Shoreline Integrity - Streams draining less than 300 acres, ponds and Non-forested Wetlands greater than 0.1 acres and less than 10 acres
- Shoreline Integrity also applies to UNMAPPED streams & wetlands.

*See MFS Rule - Chapter 21 for additional information.

Maine Forest Service

For additional information, please contact the MFS at:
1-207-287-2791 or 1-800-367-0223 (in-State)
Email us at: forestinfo@maine.gov
or on the web at: www.maineforestservice.gov

August 2021



Not a legal survey map

Department of Agriculture, Conservation and Forestry
Maine Forest Service