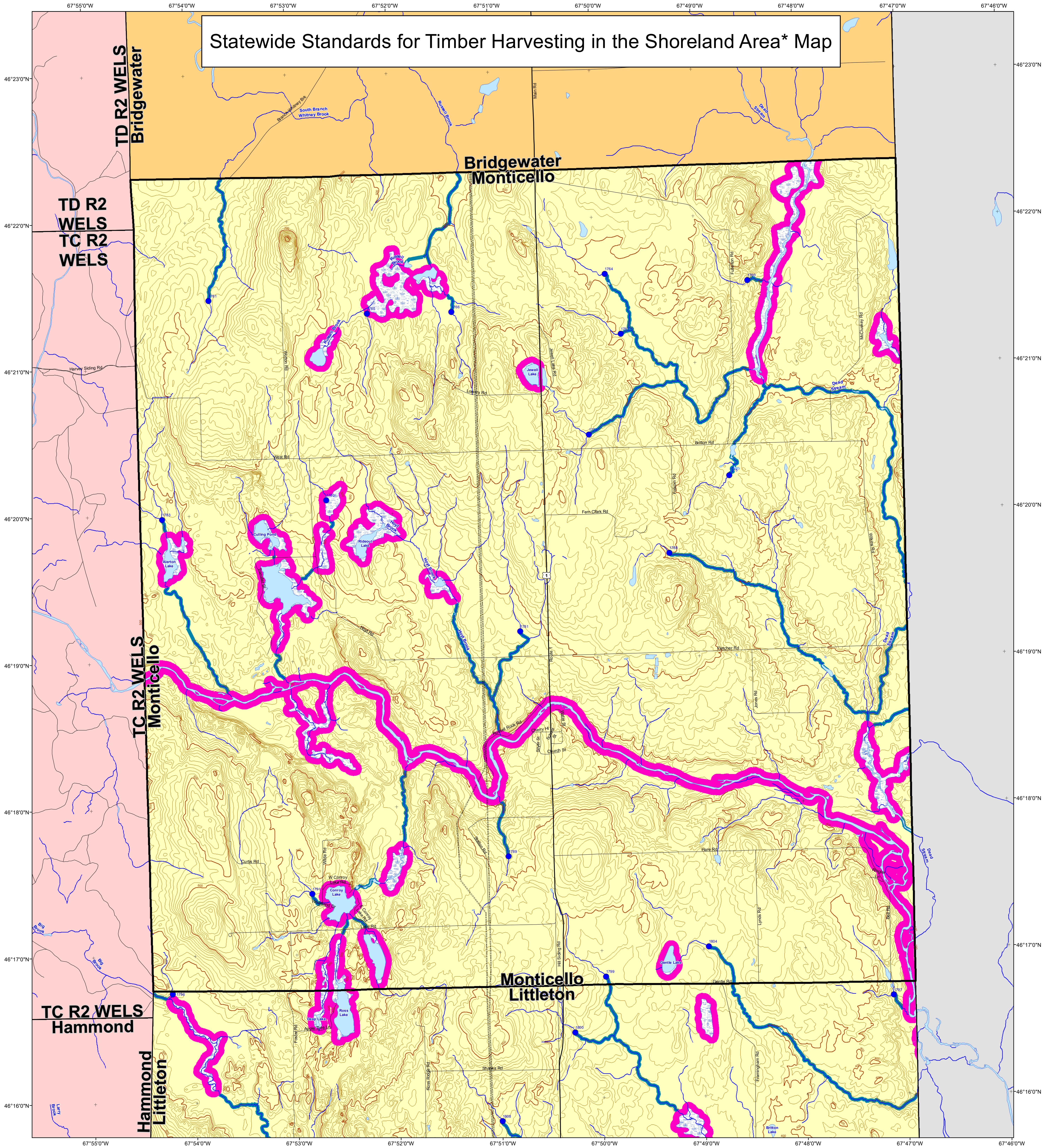


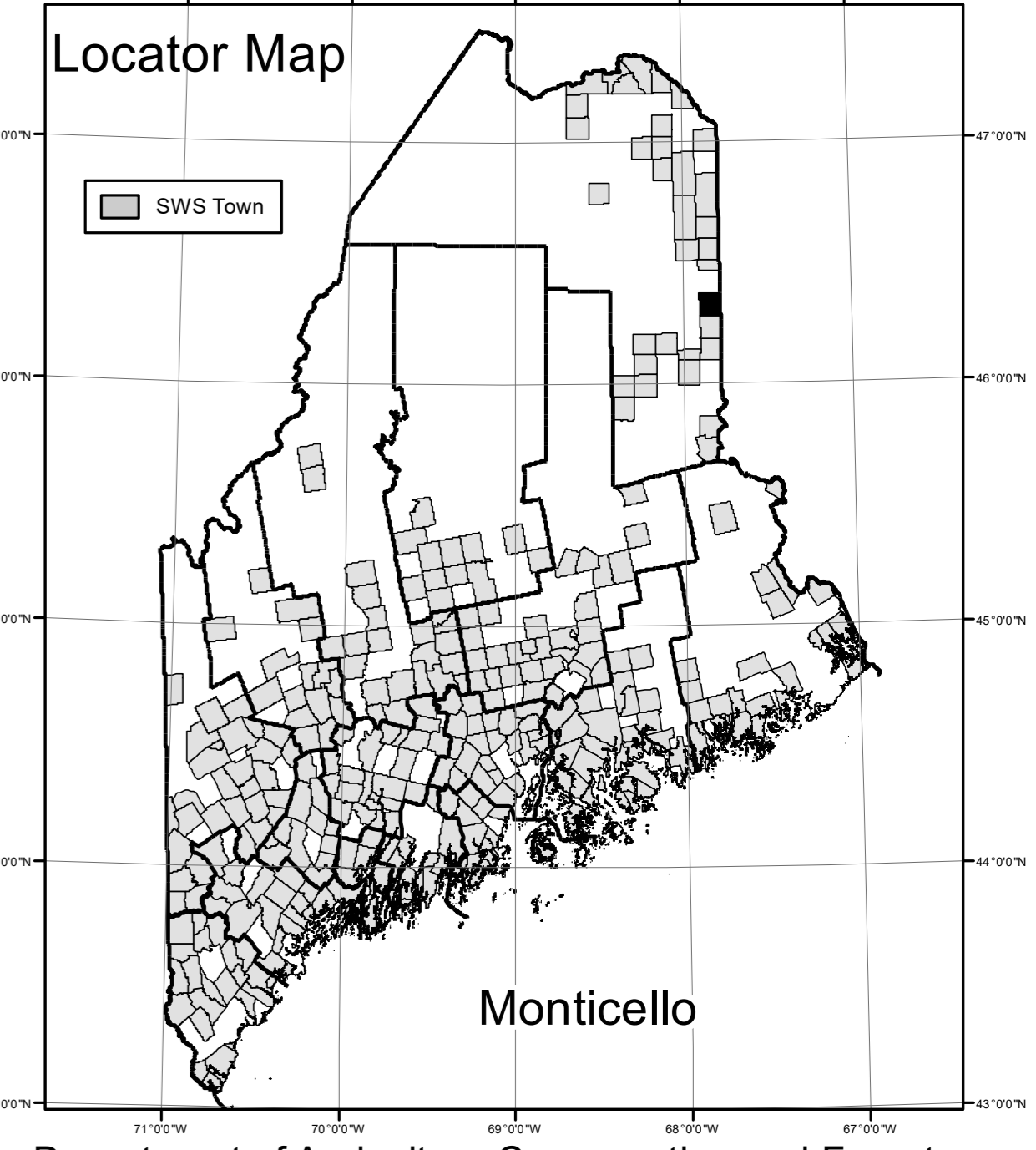
# Statewide Standards for Timber Harvesting in the Shoreland Area\* Map



This map is **ADVISORY**, for planning purposes only. Actual ground conditions and water body locations determine where and how MFS timber harvesting rules apply. Contact the MFS for additional information/assistance from a MFS Forester.

## Forest Operation Notification & Shoreland Area\* Map

Adoption Date  
3/21/2011



### Wetlands

- Non-forested Wetlands Greater Than 10 acres (Lacustrine, Palustrine)
- Emergent or Marine Wetland

### Drainage Points

- 1234 300 Acre Drainage Point (start of the 75 ft buffer)
- 56 25 Square Mile Drainage Point (start of the 250 ft buffer)

### Habitat

- Essential Wildlife Habitat (Least Tern, Roseate Tern, Piping Plover)

- SWS Town
- FON Town Town/DEP Standards apply (SWS Rules do not apply)
- Outside Maine
- LUPC - Unorganized or Deorganized Town

### Buffers

- 250 Foot Buffer Zones: Great Ponds, Non-forested Wetlands greater than 10 acres, Rivers below the 25 square mile drainage point, Coastal Wetlands, Tidal Waters, Essential Wildlife Habitat (Least Tern, Roseate Tern, Piping Plover)
- 75 Foot Buffer Zones - Streams between the 300 acre drainage point and the 25 square mile drainage point
- Shoreline Integrity - Streams draining less than 300 acres, ponds and Non-forested Wetlands greater than 0.1 acres and less than 10 acres

Shoreline Integrity also applies to UNMAPPED streams & wetlands.

### Maine Forest Service

For additional information, please contact the MFS at:  
1-207-287-2791 or 1-800-367-0223 (in-State)

Email us at: [forestinfo@maine.gov](mailto:forestinfo@maine.gov)

or on the web at: [www.maineforestservice.gov](http://www.maineforestservice.gov)

August 2021

