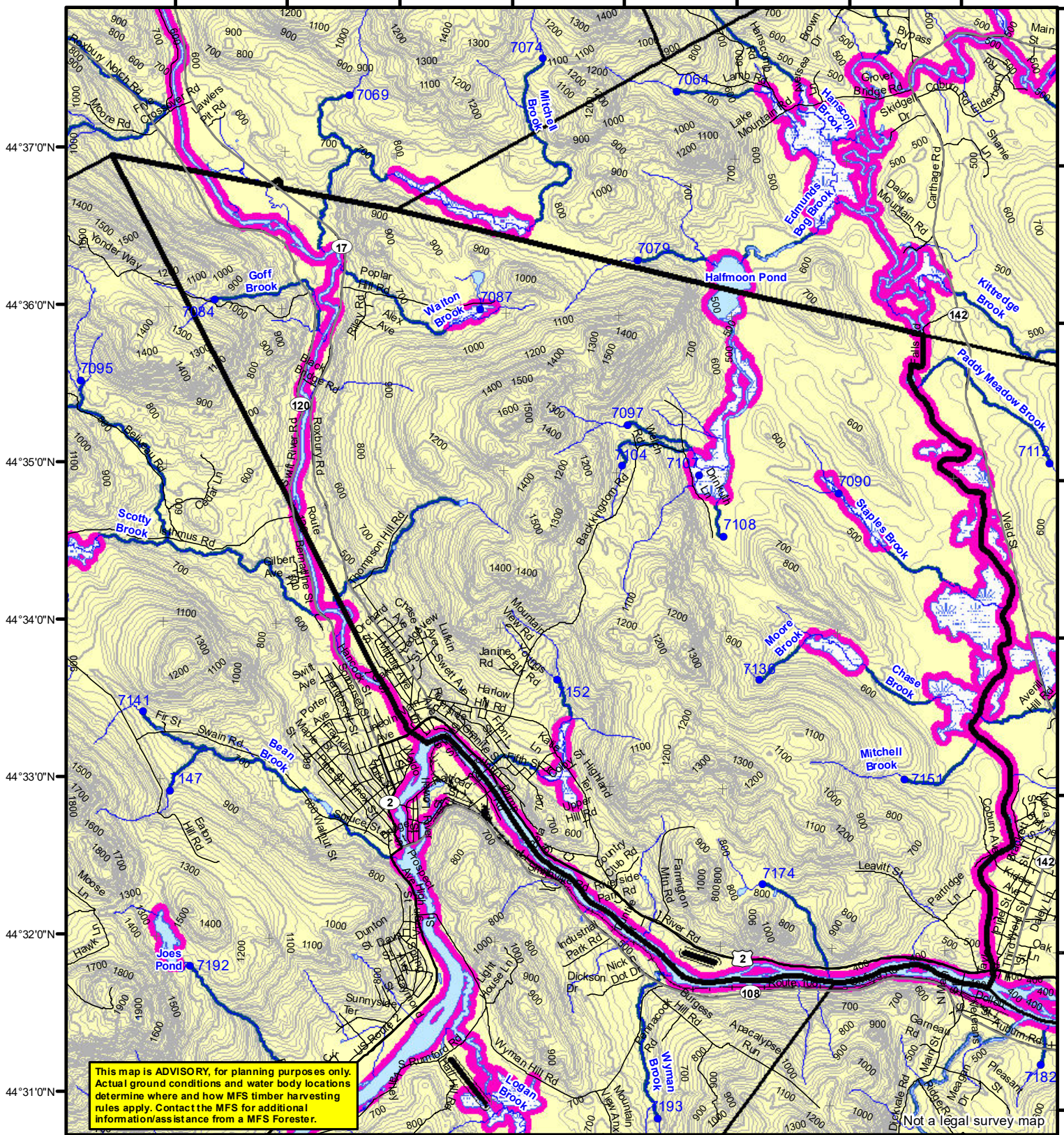


70°35'0"W 70°34'0"W 70°33'0"W 70°32'0"W 70°31'0"W 70°30'0"W 70°29'0"W 70°28'0"W



Statewide Standards

Forest Operation Notification & Shoreland Area* Map

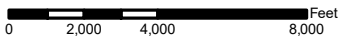
Department of Agriculture, Conservation and Forestry
Maine Forest Service
Forest Policy & Management

LO Last Name _____
LO First Name _____
Prepared By _____
FONS # _____
Date _____

Mexico

Adoption Date
9/10/2009

December 2021



*See MFS Rule - Chapter 2.1 for additional information.

Buffers

Drainage Points

- 250 Foot Buffer Zones
- Great Ponds
- Non-forested Wetlands greater than 10 acres
- Rivers below the 25 square mile drainage point
- Coastal Wetlands
- Tidal Waters
- Essential Wildlife Habitat (Least Tern, Roseate Tern, Piping Plover)
- 75 Foot Buffer Zones - Streams between the 300 acre drainage point and the 25 square mile drainage point
- Shoreline Integrity - Streams draining less than 300 acres, ponds and Non-forested Wetlands greater than 0.1 acres and less than 10 acres
- Shoreline Integrity also applies to UNMAPPED streams and wetlands.
- Habitat**
- Essential Wildlife Habitat (Least Tern, Roseate Tern, Piping Plover)

- 1234 300 Acre Drainage Point (start of the 75 ft buffer) 1234 - ID Number (location info)
- 50 25 Square Mile Drainage Point (start of the 250 ft buffer) 56 ID Number (location info)
- Wetlands**
- Emergent or Marine Wetland
- Non-forested Wetlands Greater Than 10 acres (Lacustrine, Palustrine)

Roads

- Interstate
- US Highway
- State Highway
- 24k Roads

Contours

- 20 ft
- 100 ft

Hydrology

- Pond or Lake
- River
- Estuary
- Streams**

Utilities

- Electric
- Pipeline
- Railroad
- Airfield

Data Source:

Maine Office of GIS

- FON Town
- Statewide Standards Rules do not apply (Town/MDEP Standards apply)
- Statewide Standards Rules Apply
- LUPC - Unorganized or Deorganized Town
- Outside Maine