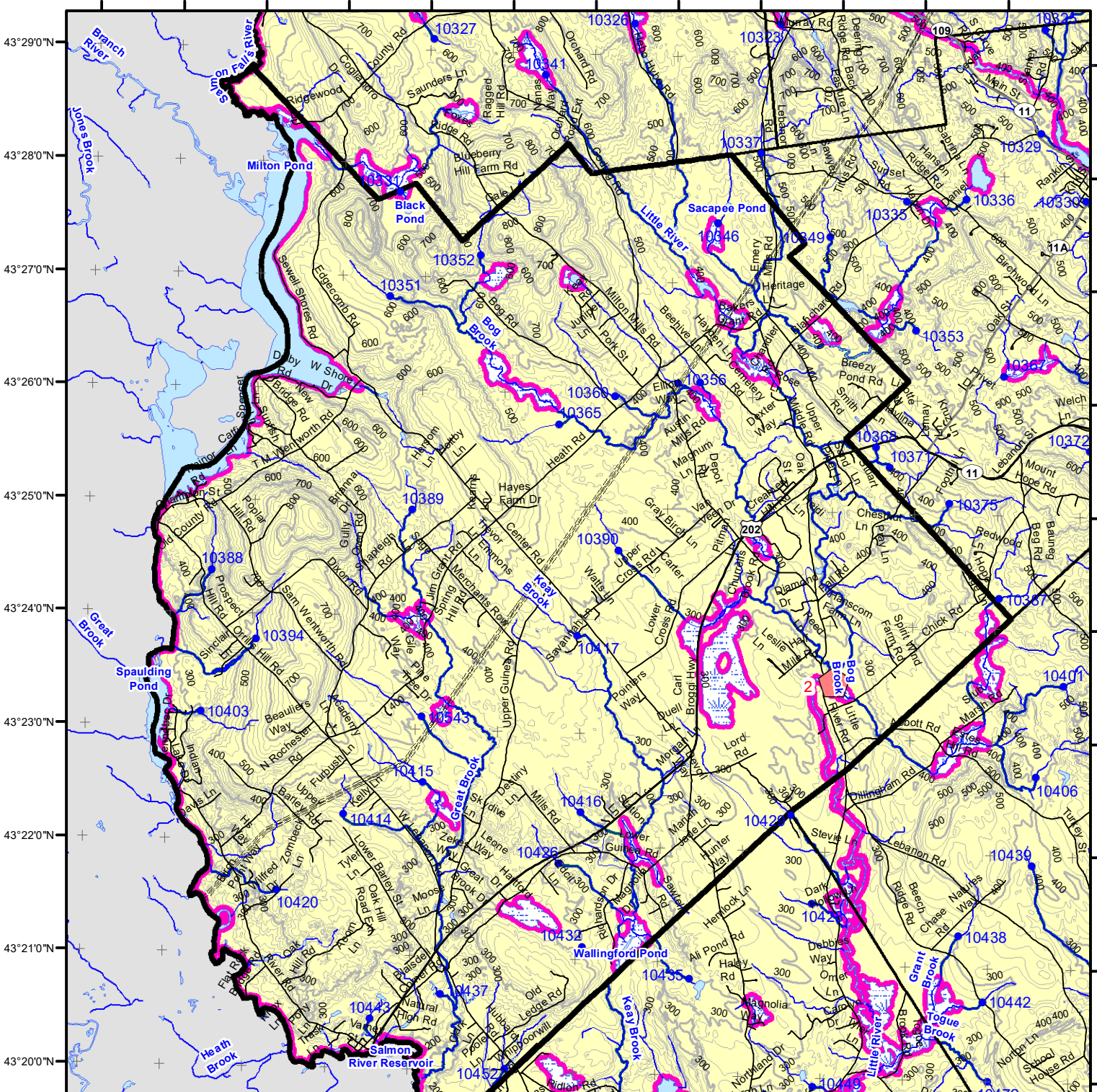


71°00'W 70°59'W 70°58'W 70°57'W 70°56'W 70°55'W 70°54'W 70°53'W 70°52'W 70°51'W 70°50'W 70°49'W



This map is ADVISORY, for planning purposes only. Actual ground conditions and water body locations determine where and how MFS timber harvesting rules apply. Contact the MFS for additional information/assistance from a MFS Forester.

Not a legal survey map

Statewide Standards

- Buffers**
 - 250 Foot Buffer Zones
 - Great Ponds
 - Non-forested Wetlands greater than 10 acres
 - Rivers below the 25 square mile drainage point
 - Coastal Wetlands
 - Tidal Waters
 - Essential Wildlife Habitat (Least Tern, Roseate Tern, Piping Plover)
 - 75 Foot Buffer Zones
 - Streams between the 300 acre drainage point and the 25 square mile drainage point
 - Shoreline Integrity - Streams draining less than 300 acres, ponds and Non-forested Wetlands greater than 0.1 acres and less than 10 acres
 - Shoreline Integrity also applies to UNMAPPED streams and wetlands.
- Drainage Points**
 - 300 Acre Drainage Point (start of the 75 ft buffer) 1234 - ID Number (location info)
 - 25 Square Mile Drainage Point (start of the 250 ft buffer) 56 ID Number (location info)
- Wetlands**
 - Emergent or Marine Wetland
 - Non-forested Wetlands Greater Than 10 acres (Lacustrine, Palustrine)
- Habitat**
 - Essential Wildlife Habitat (Least Tern, Roseate Tern, Piping Plover)

Forest Operation Notification & Shoreland Area* Map

Lebanon

Adoption Date 7/7/2009

September 2024

Department of Agriculture, Conservation and Forestry
Maine Forest Service
Forest Policy & Management

Roads

- Interstate
- US Highway
- State Highway
- 24k Roads

Hydrology

- Pond or Lake
- River
- Estuary

Streams

Contours

- 20 ft
- 100 ft

Utilities

- Electric
- Pipeline
- Railroad
- Airfield

Legend

- LO Last Name
- LO First Name
- Prepared By
- FONS #
- Date
- FON Town
- Statewide Standards Rules do not apply (Town/MEDEP Standards apply)
- Statewide Standards Rules Apply
- LUPC - Unorganized or Deorganized Town
- Outside Maine

Data Source: Maine Office of GIS
G.T.Miller E:\sws\SWS page size sept 2024.mxd

0 2,000 4,000 8,000 12,000 Feet

*See MFS Rule - Chapter 21 for additional information.