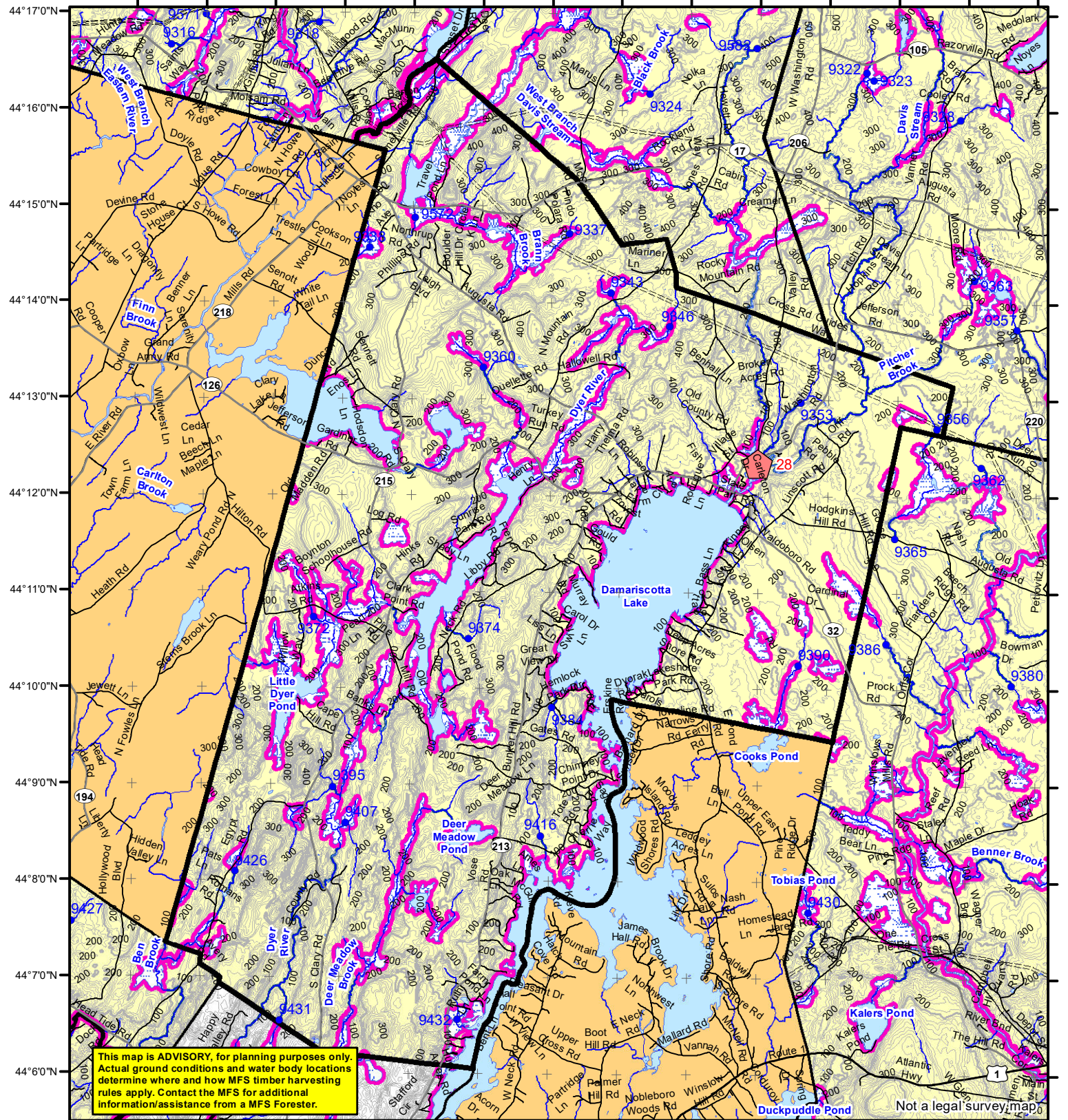


69°36'0"W 69°35'0"W 69°34'0"W 69°33'0"W 69°32'0"W 69°31'0"W 69°30'0"W 69°29'0"W 69°28'0"W 69°27'0"W 69°26'0"W 69°25'0"W 69°24'0"W 69°23'0"W



Statewide Standards

Buffers

- 250 Foot Buffer Zones
- Great Ponds
- Non-forested Wetlands greater than 10 acres
- Rivers below the 25 square mile drainage point
- Coastal Wetlands
- Tidal Waters
- Essential Wildlife Habitat (Least Tern, Roseate Tern, Piping Plover)
- 75 Foot Buffer Zones - Streams between the 300 acre drainage point and the 25 square mile drainage point
- Shoreline Integrity - Streams draining less than 300 acres, ponds and Non-forested Wetlands greater than 0.1 acres and less than 10 acres
- Shoreline Integrity also applies to UNMAPPED streams and wetlands.

Habitat

- Essential Wildlife Habitat (Least Tern, Roseate Tern, Piping Plover)

Forest Operation Notification & Shoreland Area* Map

Jefferson

Adoption Date
9/12/2022

November 2024

0 2,000 4,000 8,000 12,000 Feet

*See MFS Rule - Chapter 21 for additional information.

Department of Agriculture, Conservation and Forestry
Maine Forest Service
Forest Policy & Management

Roads

- Interstate
- US Highway
- State Highway
- 24k Roads

Hydrology

- Pond or Lake
- River
- Estuary

Streams

-

Contours

- 20 ft
- 100 ft

Utilities

- Electric
- Pipeline
- Railroad
- Airfield

Data Source:
Maine Office of GIS

G.T.Miller E:\sww\SWS page size nov 2024.mxd

Drainage Points

- 1234 300 Acre Drainage Point (start of the 75 ft buffer)
- 1234 - ID Number (location info)
- 56 25 Square Mile Drainage Point (start of the 250 ft buffer)
- 56 ID Number (location info)

Wetlands

- Emergent or Marine Wetland
- Non-forested Wetlands Greater Than 10 acres (Lacustrine, Palustrine)

LO Last Name _____
LO First Name _____
Prepared By _____
FONS # _____
Date _____

FON Town _____
Statewide Standards Rules do not apply (Town/MDEP Standards apply)
Statewide Standards Rules Apply
LUPC - Unorganized or Deorganized Town
Outside Maine