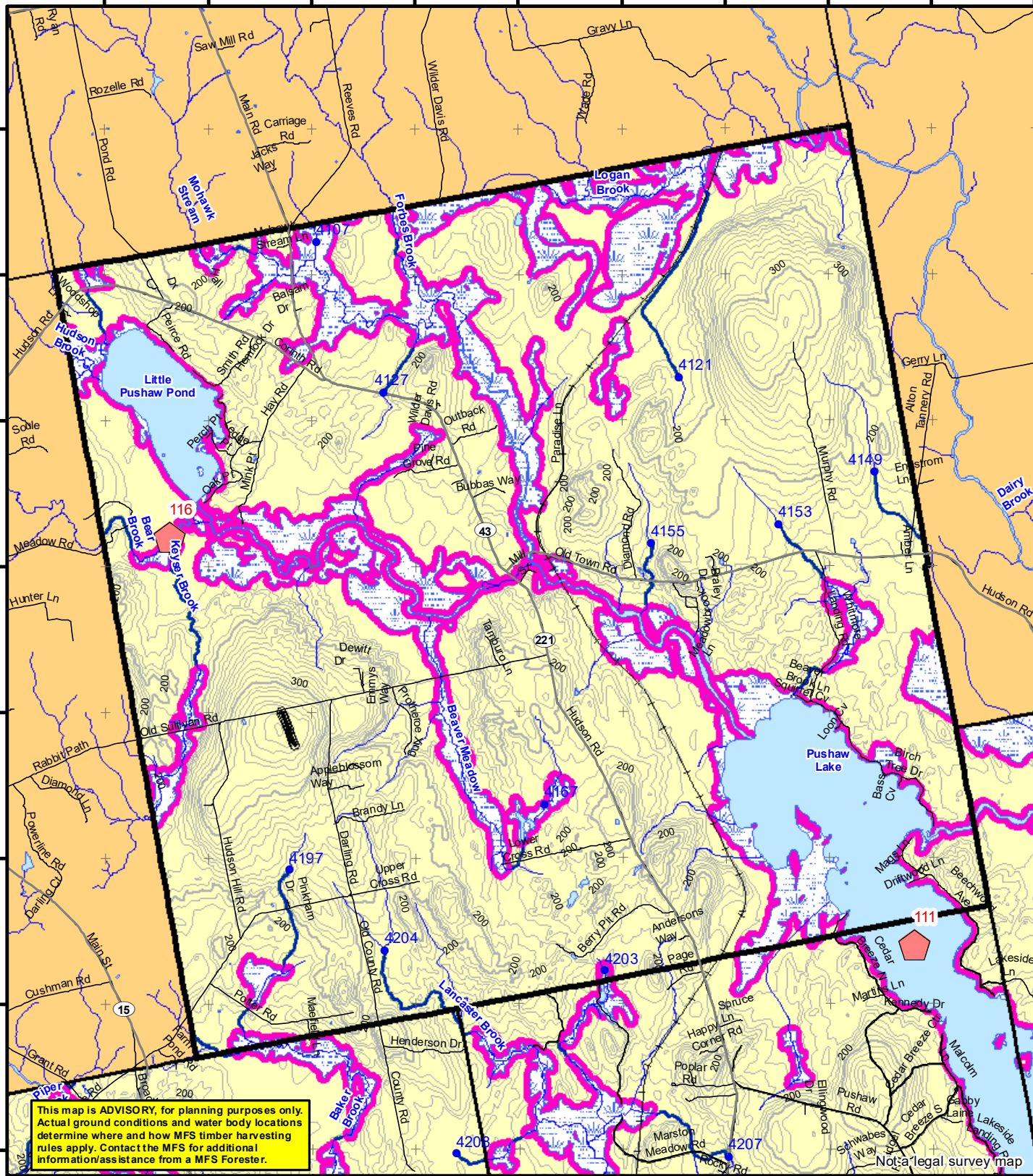


68°57'0"W 68°56'0"W 68°55'0"W 68°54'0"W 68°53'0"W 68°52'0"W 68°51'0"W 68°50'0"W 68°49'0"W 68°48'0"W

45°30'N  
45°20'N  
45°10'N  
45°00'N  
44°59'N  
44°58'N  
44°57'N  
44°56'N



This map is **ADVISORY**, for planning purposes only. Actual ground conditions and water body locations determine where and how MFS timber harvesting rules apply. Contact the MFS for additional information/assistance from a MFS Forester.

### Statewide Standards

**Buffers**

- 250 Foot Buffer Zones
- Great Ponds
- Non-forested Wetlands greater than 10 acres
- Rivers below the 25 square mile drainage point
- Coastal Wetlands
- Tidal Waters
- Essential Wildlife Habitat (Least Tern, Roseate Tern, Piping Plover)

**75 Foot Buffer Zones**

- Streams between the 300 acre drainage point and the 25 square mile drainage point

**Shoreline Integrity** - Streams draining less than 300 acres, ponds and Wetlands greater than 0.1 acres and less than 10 acres

Shoreline Integrity also applies to UNMAPPED streams and wetlands.

**Habitat**

- Essential Wildlife Habitat (Least Tern, Roseate Tern, Piping Plover)

## Forest Operation Notification & Shoreland Area\* Map

# Hudson

Adoption Date  
4/14/2009

December 2021

0 2,000 4,000 8,000 Feet

\*See MFS Rule - Chapter 2.1 for additional information.

Department of Agriculture, Conservation and Forestry  
Maine Forest Service  
Forest Policy & Management

**Roads**

- Interstate
- US Highway
- State Highway
- 24k Roads

**Hydrology**

- Pond or Lake
- River
- Estuary

**Streams**

- Electric
- Pipeline
- Railroad
- Airfield

**Contours**

- 20 ft
- 100 ft

**Utilities**

- Electric
- Pipeline
- Railroad
- Airfield

**Data Source:**  
Maine Office of GIS

G.T.Miller E:\aws\SW S page size december 2021.mxd

**Drainage Points**

- 1234 300 Acre Drainage Point (start of the 75 ft buffer)
- 1234 - ID Number (location info)
- 56 25 Square Mile Drainage Point (start of the 250 ft buffer)
- 56 ID Number (location info)

**Wetlands**

- Emergent or Marine Wetland
- Non-forested Wetlands Greater Than 10 acres (Lacustrine, Palustrine)

**Legend**

- LO Last Name
- LO First Name
- Prepared By
- FONS #
- Date
- FON Town
- Statewide Standards Rules do not apply (Town/MDEP Standards apply)
- Statewide Standards Rules Apply
- LUPC - Unorganized or Deorganized Town
- Outside Maine