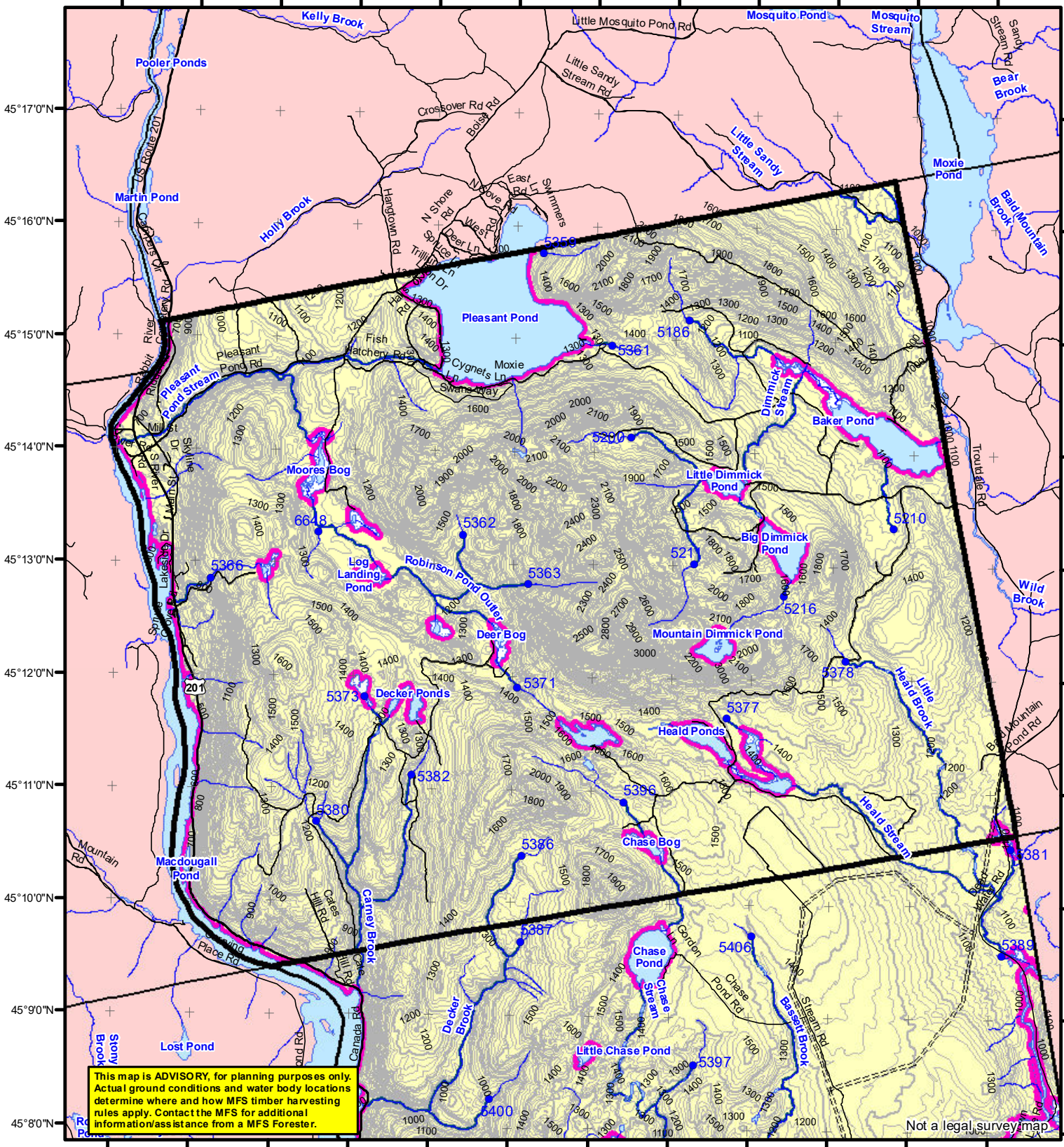


70°0'0"W 69°59'0"W 69°58'0"W 69°57'0"W 69°56'0"W 69°55'0"W 69°54'0"W 69°53'0"W 69°52'0"W 69°51'0"W 69°50'0"W 69°49'0"W



This map is ADVISORY, for planning purposes only. Actual ground conditions and water body locations determine where and how MFS timber harvesting rules apply. Contact the MFS for additional information/assistance from a MFS Forester.

Not a legal survey map



Statewide Standards

Forest Operation Notification & Shoreland Area\* Map

Department of Agriculture, Conservation and Forestry  
Maine Forest Service  
Forest Policy & Management

LO Last Name \_\_\_\_\_  
LO First Name \_\_\_\_\_  
Prepared By \_\_\_\_\_  
FONS # \_\_\_\_\_  
Date \_\_\_\_\_

Buffers

Drainage Points

Caratunk

Adoption Date  
7/29/2008

December 2021

- 250 Foot Buffer Zones
- Great Ponds
- Non-forested Wetlands greater than 10 acres
- Rivers below the 25 square mile drainage point
- Coastal Wetlands
- Tidal Waters
- Essential Wildlife Habitat (Least Tern, Roseate Tern, Piping Plover)
- 75 Foot Buffer Zones - Streams between the 300 acre drainage point and the 25 square mile drainage point
- Shoreline Integrity - Streams draining less than 300 acres, ponds and Non-forested Wetlands greater than 0.1 acres and less than 10 acres
- Shoreline Integrity also applies to UNMAPPED streams and wetlands.
- Habitat
- Essential Wildlife Habitat (Least Tern, Roseate Tern, Piping Plover)

Wetlands

- 300 Acre Drainage Point (start of the 75 ft buffer) 1234 - ID Number (location info)
- 25 Square Mile Drainage Point (start of the 250 ft buffer) 56 ID Number (location info)
- Emergent or Marine Wetland
- Non-forested Wetlands Greater Than 10 acres (Lacustrine, Palustrine)

Roads

- Interstate
- US Highway
- State Highway
- 24k Roads
- Hydrology
- Pond or Lake
- River
- Estuary
- Streams

Contours

- 20 ft
- 100 ft
- Utilities
- Electric
- Pipeline
- Railroad
- Airfield



\*See MFS Rule - Chapter 2.1 for additional information.