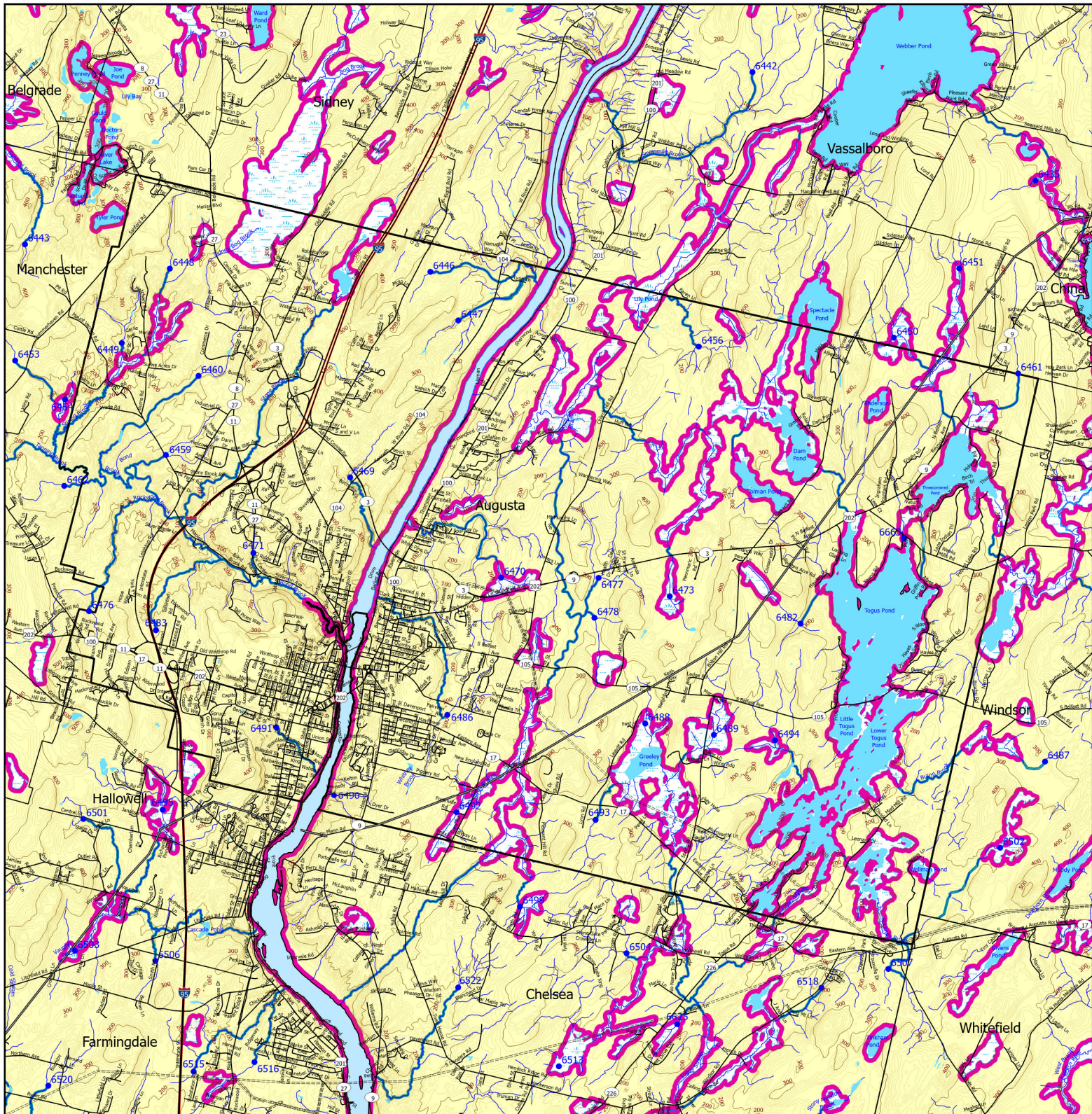


# Forest Operation Notification & Shoreland Area\* Map



## Forest Operation Notification & Shoreland Area\* Map August

Adoption Date  
9/14/2017

This map is ADVISORY, for planning purposes only. Actual ground conditions and water body locations determine where and how MFS timber harvesting rules apply. Contact the MFS for additional information/assistance from a MFS Forester.

Department of Agriculture, Conservation and Forestry  
Maine Forest Service

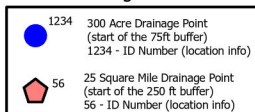
### Maine Forest Service

For additional information, please contact the MFS at:  
1-207-287-2791 or 1-800-367-0223 (In-State)

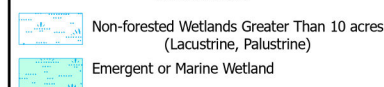
Email us at: [forestinfo@maine.gov](mailto:forestinfo@maine.gov)

or on the web at: [www.maineforestservice.gov](http://www.maineforestservice.gov)

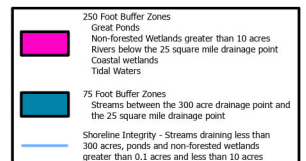
### Drainage Points



### Wetlands



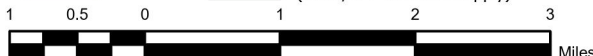
### Buffers



August 2025



Outside Maine



\*See MFS Rule - Chapter 21 for additional information.