

Forest Resources in Kennebec County



Andy Cutko
Maine Department of Conservation
October 2010

Topics to Be Covered:

Land Uses and Trends

Forest Types, Conditions, and Trends

Management Considerations

Take Home Messages

Land Uses In Kennebec County

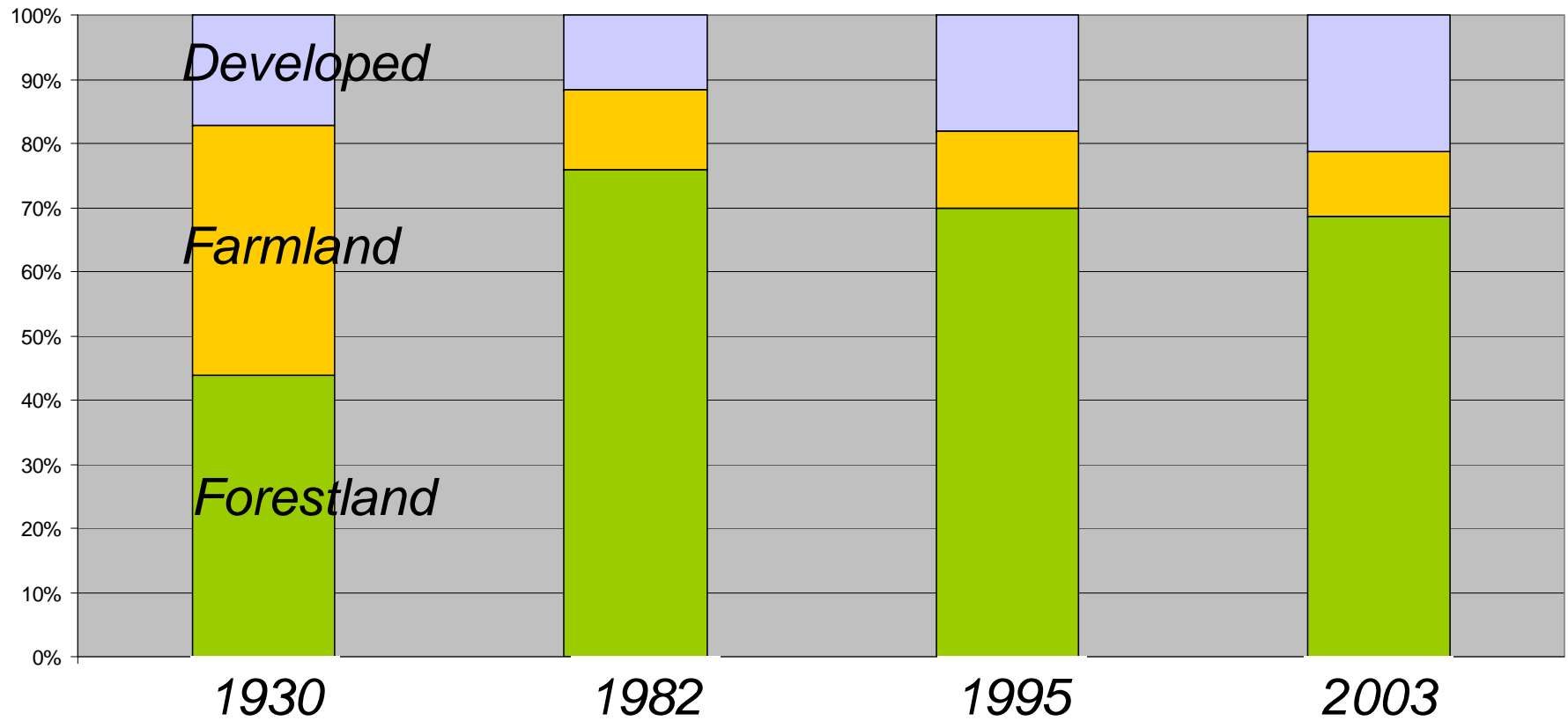
Developed
21%

Agriculture
10%

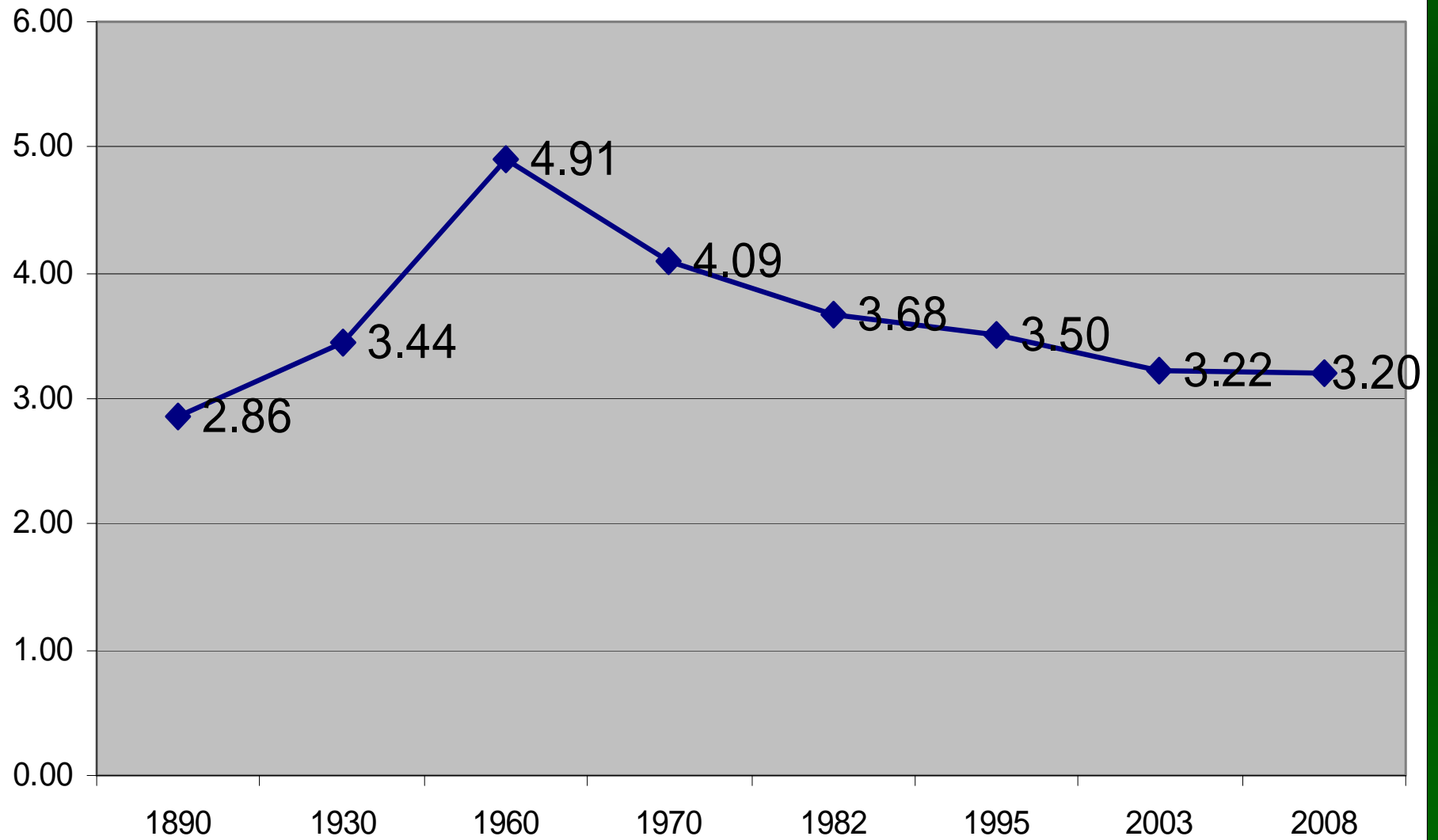
Forestland
69%

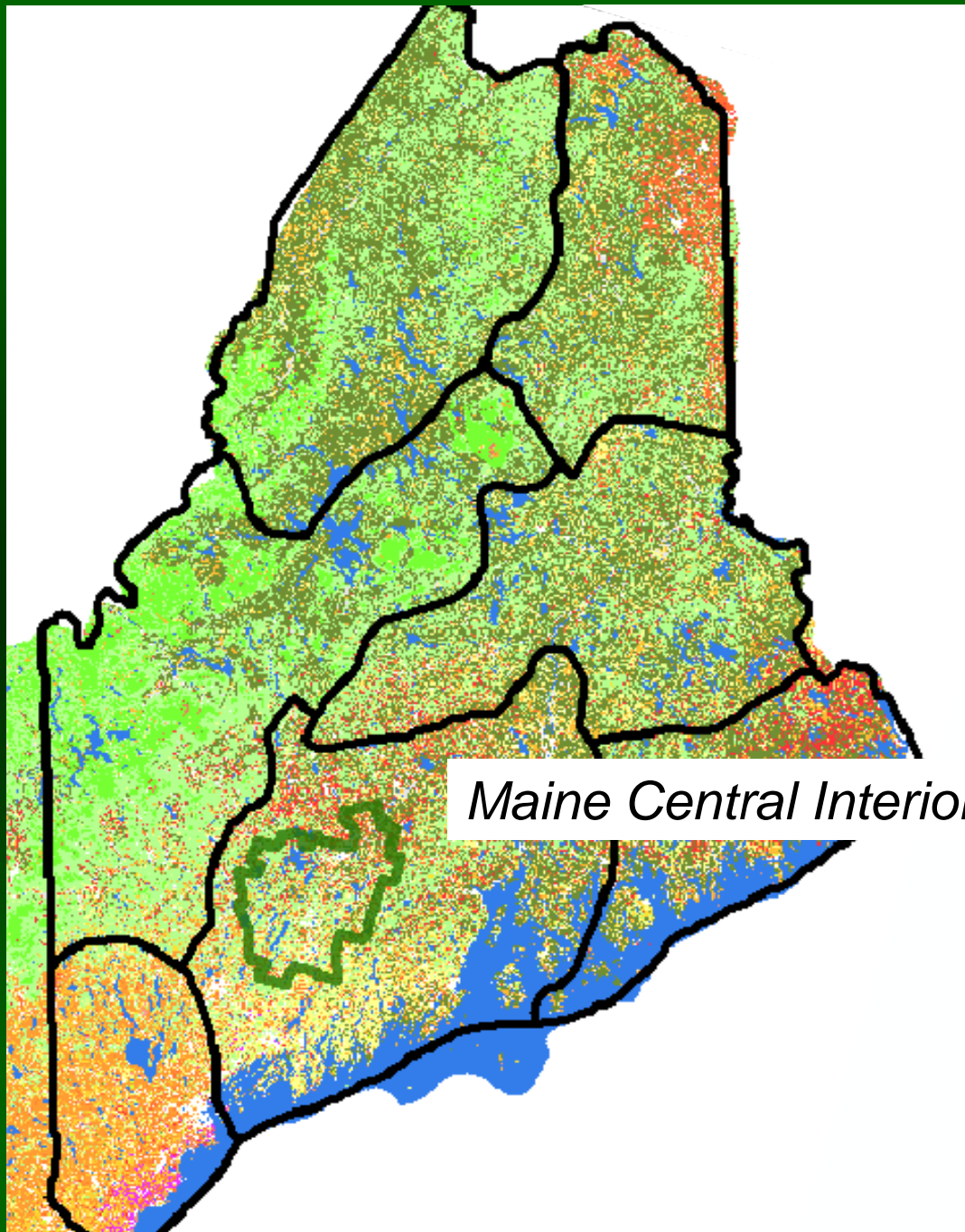


Land uses in Kennebec County



Forestland Acres per capita, Kennebec County

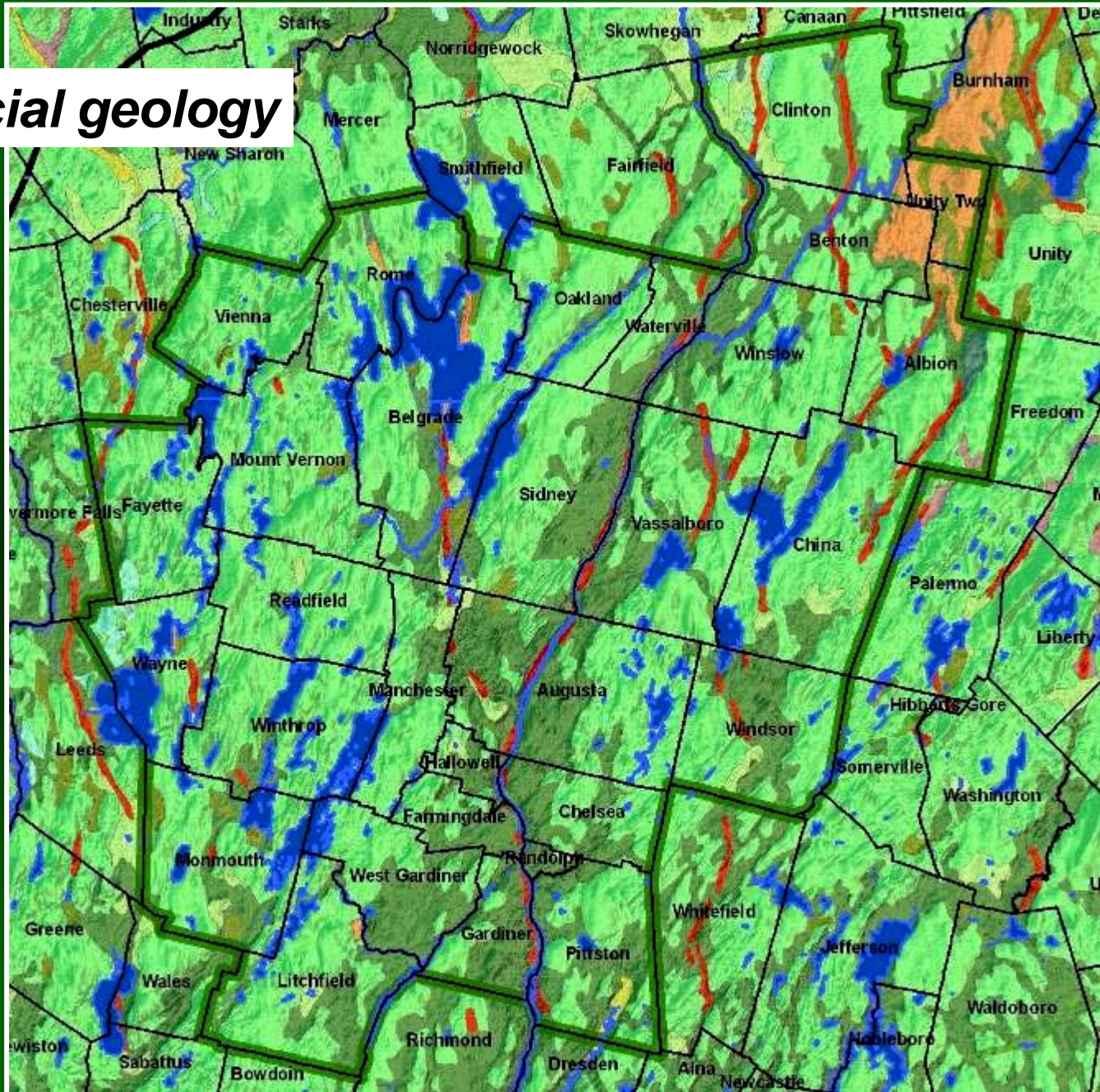




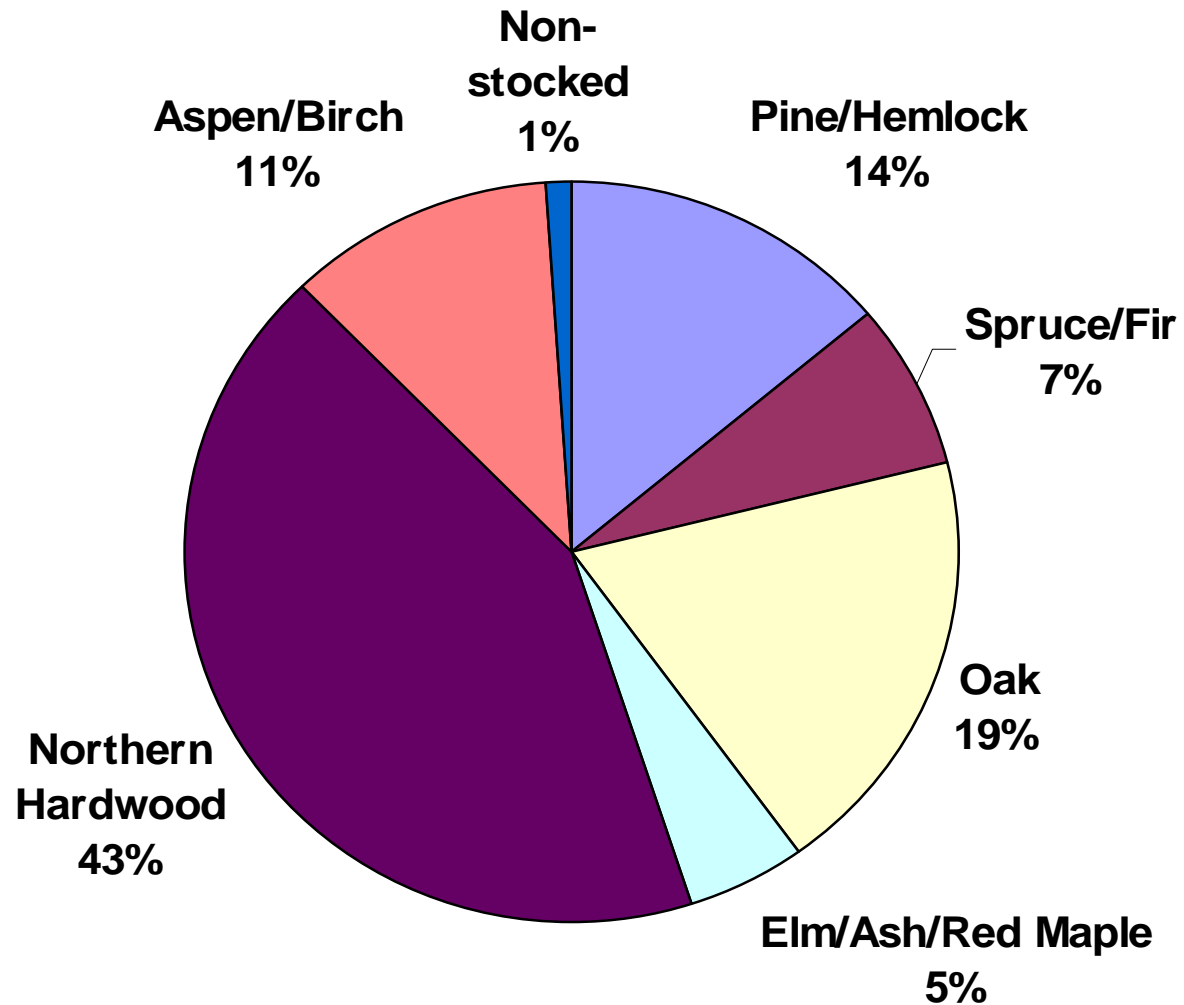
Maine Central Interior



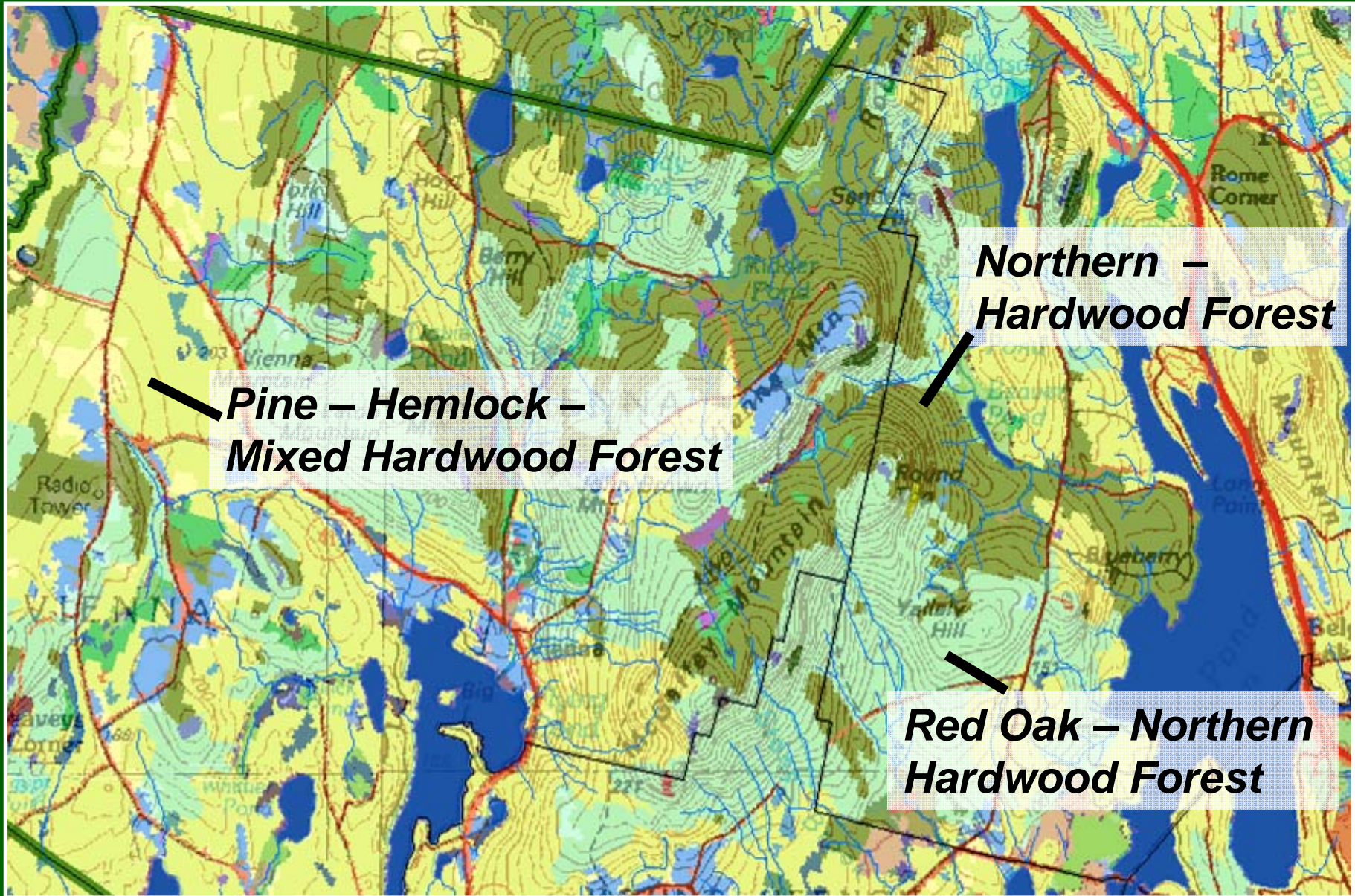
Surficial geology



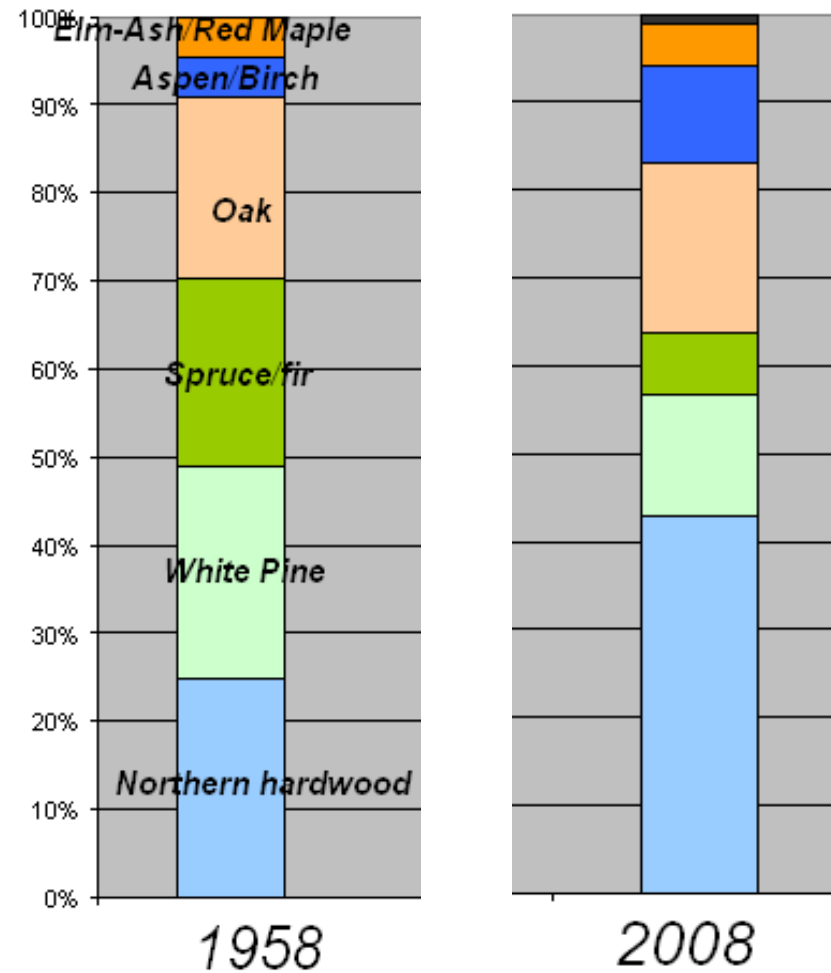
Forest Types in Kennebec County (MFS)



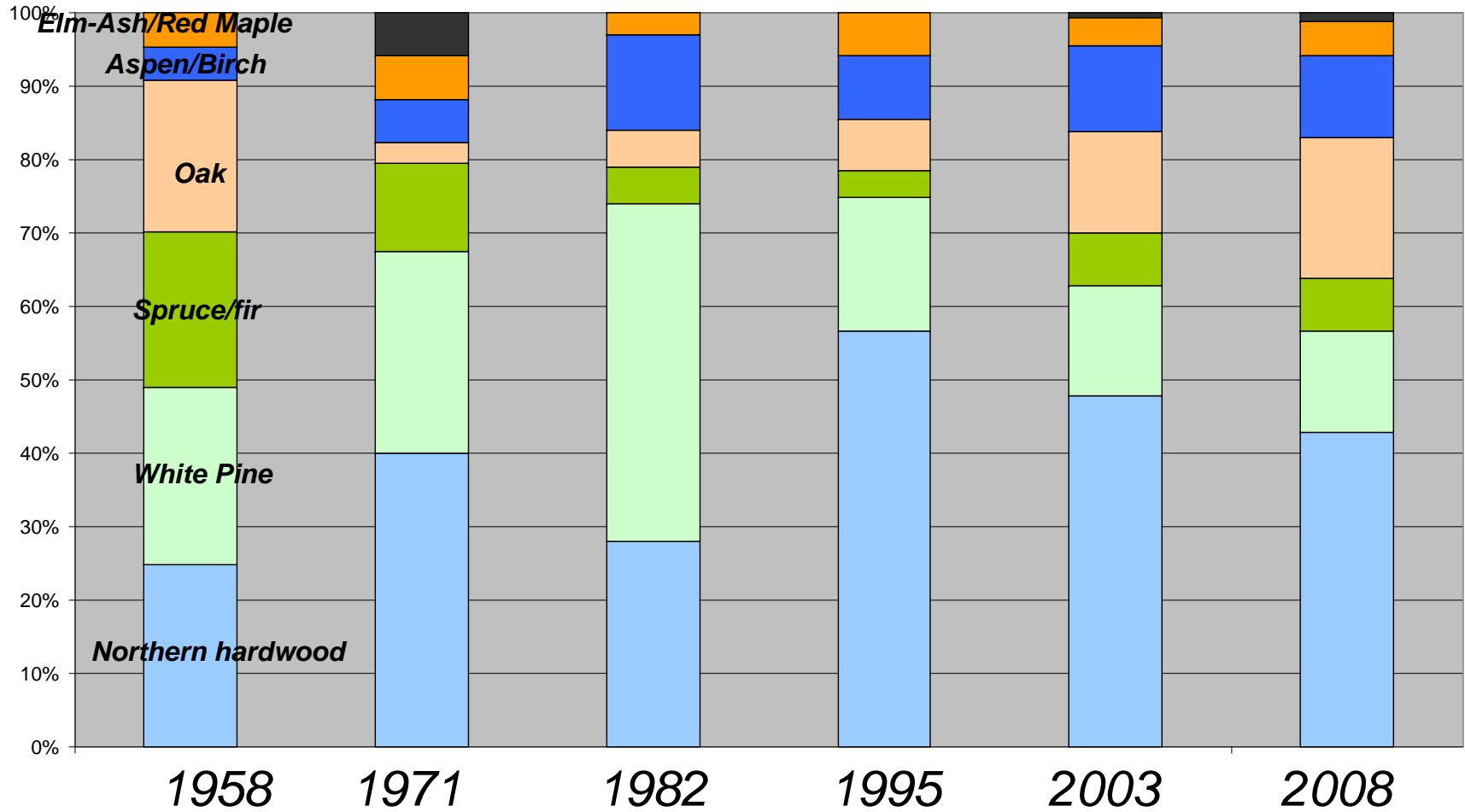
Ecological Systems (New National Classification & Map)



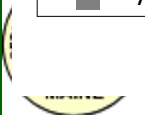
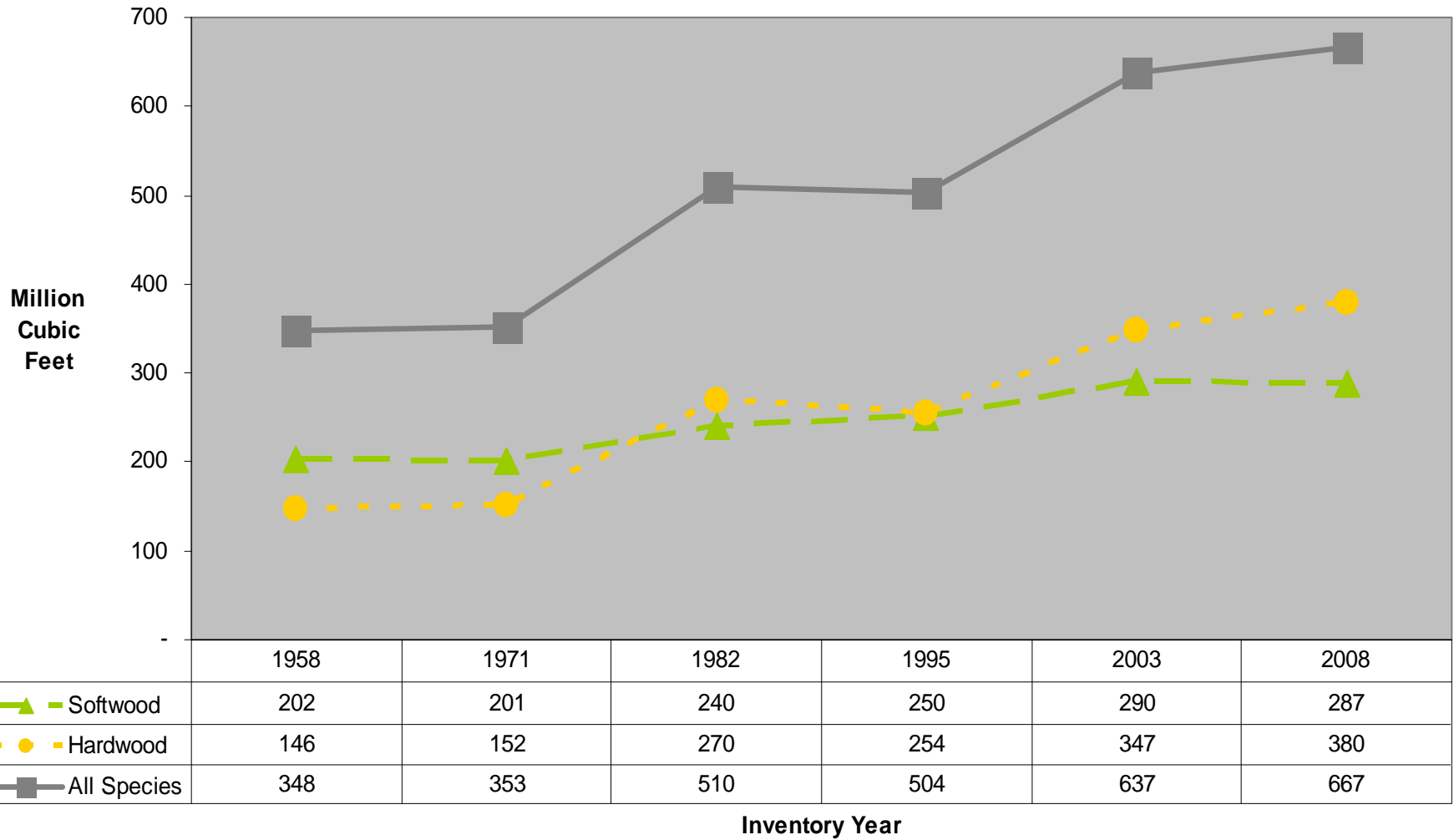
Forest Type Changes Over Time



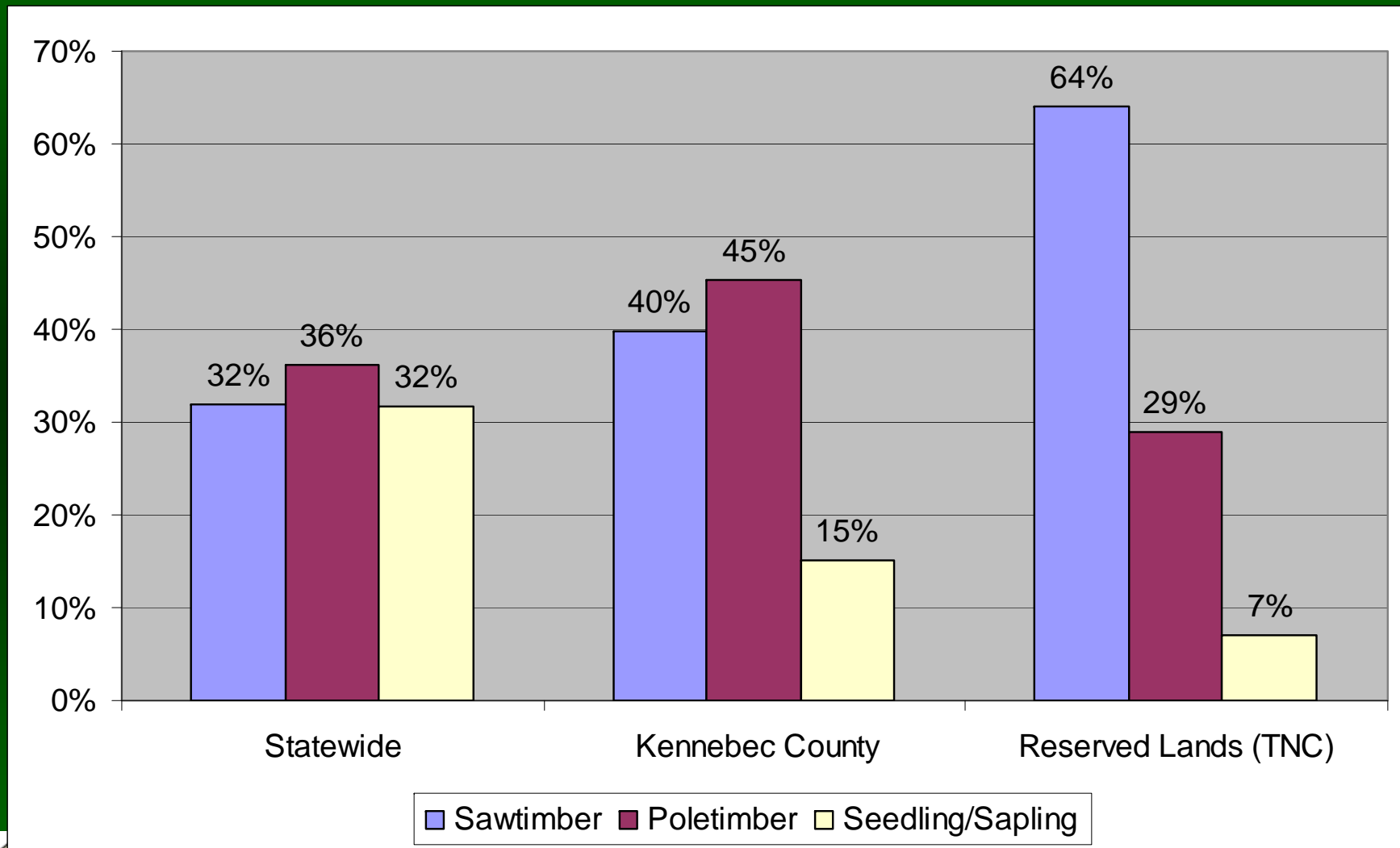
Kennebec County Forest Types



Growing Stock in Kennebec County



Forest Condition: Stand Size Class



Early successional forests are being lost in Southern Maine



But we know how to create them...



Old forests are also uncommon and declining across the region

Estimates of 'old growth' (NCSSEF)

- Maine – 0.17%**
- New Hampshire – 0.41%
- Vermont – 0.05%
- New York – 0.70%
- Pennsylvania – 0.06%
- Connecticut – 0.01%



Some species associated with old forest may be at risk



Are we favoring habitat generalists at the expense of specialists?



Take Home Messages

- More than 2/3 of Kennebec County is forested, and volume has nearly doubled over the past 50 years
- Both early and late–successional forests are at risk, with potential impacts on biodiversity and habitat values
- Other challenges to our forests include increasing fragmentation, invasive species, and climate change