

Map 1 – Property Boundaries

Accessed 08/06/2019

imapinvasives.natureserve.org

© 2020 NatureServe

Notes

██████████ Farm, ██████████, Maine
Property Boundary lines in yellow
Survey conducted on 08/06/2019

██████████ Farm - ██████████



Legend

▭ ██████████ Property Boundaries

Google Earth

©2021 Google



**Map 2 – Surveyed Acres and
Search Route (track)**

Accessed 08/06/2019

imapinvasives.natureserve.org

© 2020 NatureServe

Notes

██████████ Farm, ██████████, Maine
Surveyed acres highlighted in yellow
Survey Routes (tracks) in red
Survey conducted on 08/06/2019



Map 3 – All infestations

Accessed 08/06/2019

imapinvasives.natureserve.org

© 2020 NatureServe

Notes

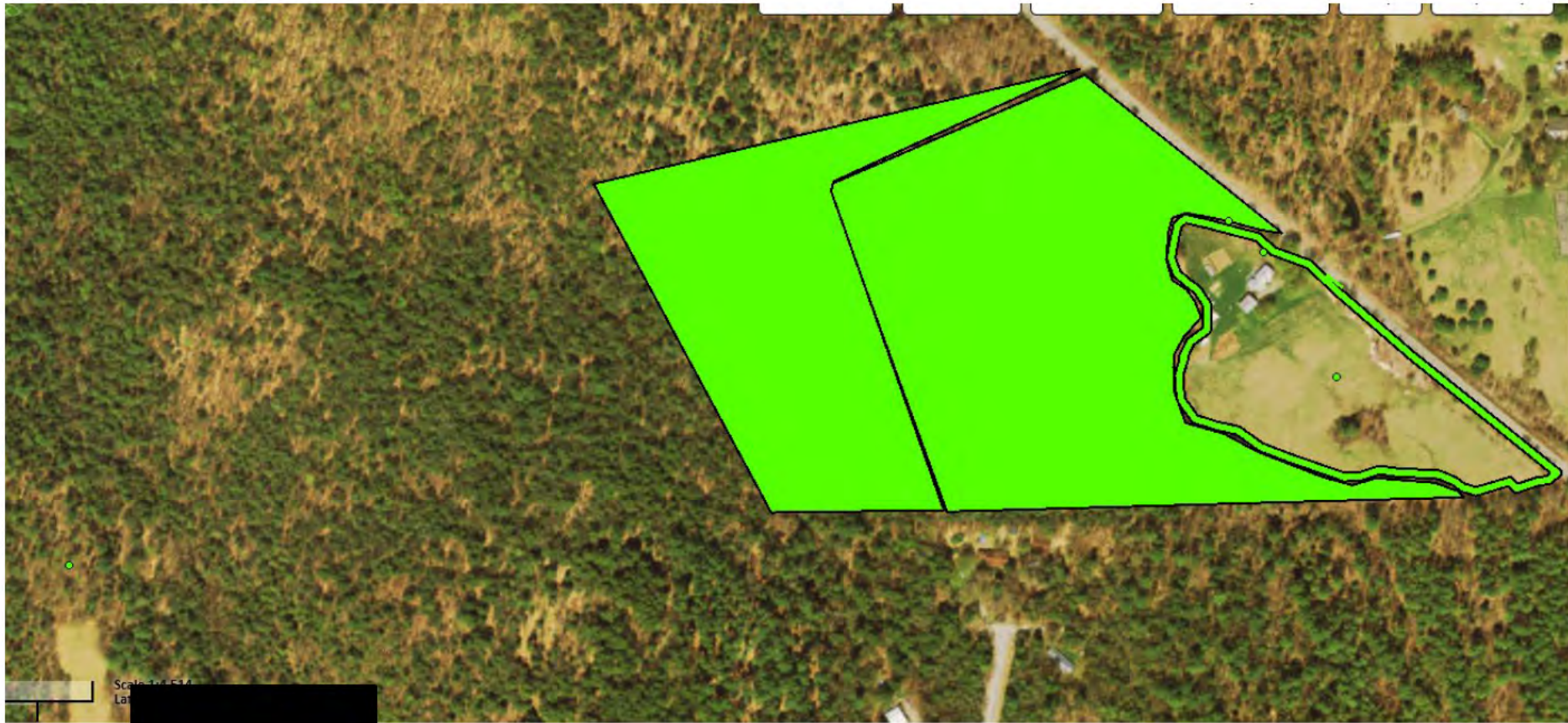
██████████ Farm, ██████████, Maine

Approximate areas of infestation shown by green
present species locations including points and shapes.



iMapInvasives

Sharing information for strategic management



Map 4 – Shrubby Honeysuckle

Accessed 08/06/2019

imapinvasives.natureserve.org

© 2020 NatureServe

Notes

██████████ Farm, ██████████, Maine

Approximate areas of infestation shown by green
present species locations including points and shapes.



iMapInvasives

Sharing information for strategic management

Restore Filter Records

B

A



m
ft



Map 5 – Japanese Knotweed

Accessed 08/06/2019

imapinvasives.natureserve.org

© 2020 NatureServe

Notes

██████████ Farm, ██████████, Maine

Approximate areas of infestation shown by green
present species locations including points and shapes.



iMapInvasives

Sharing information for strategic management



Map 6 – Japanese Barberry

Accessed 08/06/2019

imapinvasives.natureserve.org

© 2020 NatureServe

Notes

██████████ Farm, ██████████, Maine

Approximate areas of infestation shown by green
present species locations including points and shapes.



iMapInvasives

Sharing information for strategic management

Restore Filter Records



Map 7 – Burning Bush

Accessed 08/06/2019

imapinvasives.natureserve.org

© 2020 NatureServe

Notes

██████████ Farm, ██████████, Maine

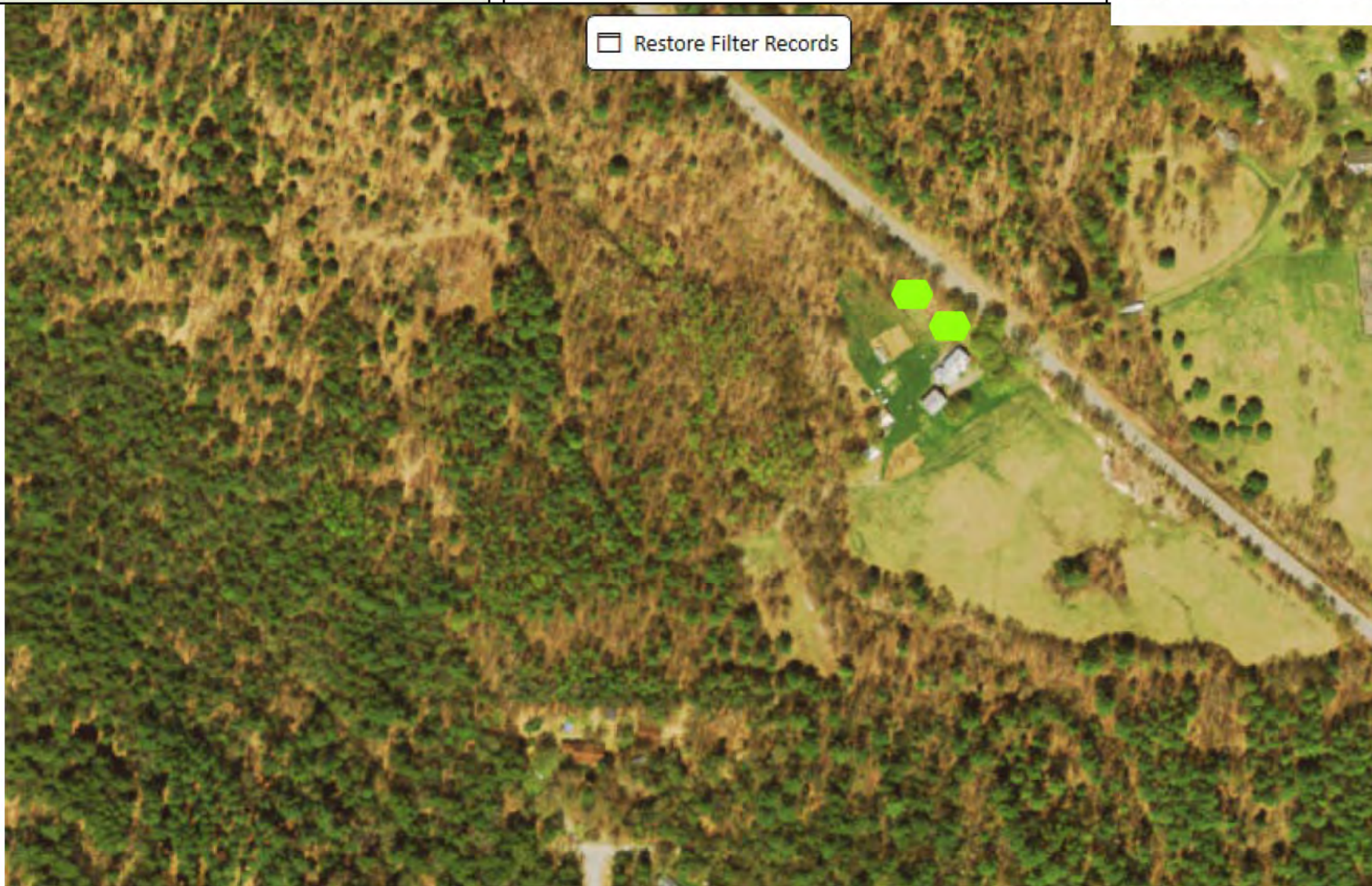
Approximate areas of infestation shown by green
present species locations including points and shapes.



iMapInvasives

Sharing information for strategic management

Restore Filter Records



Map 8 – Multiflora Rose

Accessed 08/06/2019

imapinvasives.natureserve.org

© 2020 NatureServe

Notes

██████████ Farm, ██████████, Maine

Approximate areas of infestation shown by green
present species locations including points and shapes.



iMapInvasives

Sharing information for strategic management

