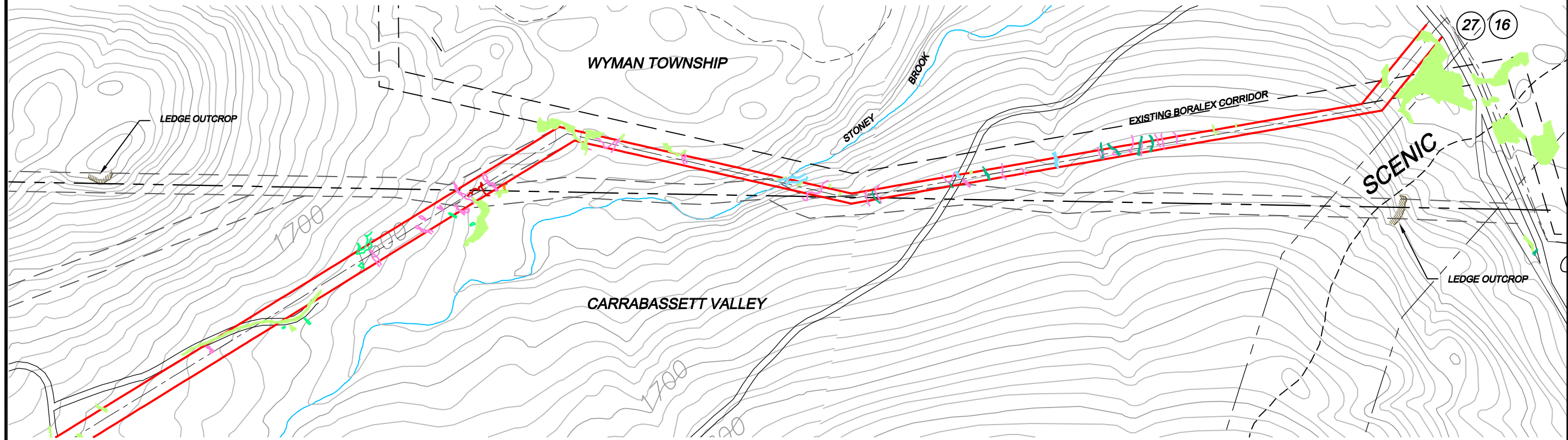
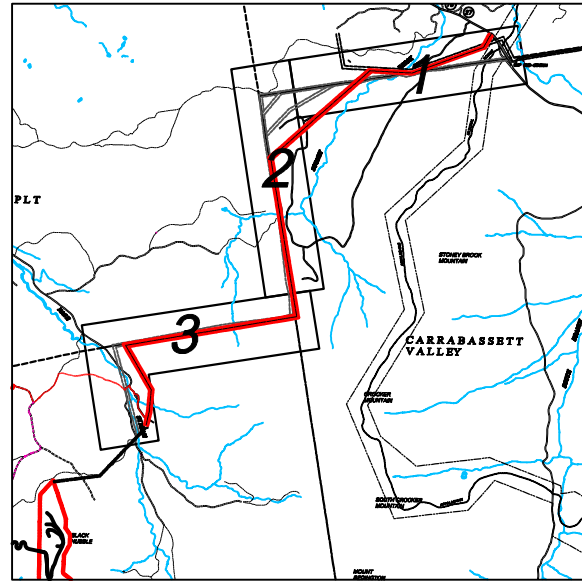


# 115kv TRANSMISSION CORRIDOR NATURAL COMMUNITY MAP



**Notes:**

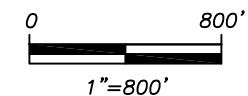
- 1) Wetlands, streams, and hydrologic resources were verified and delineated by Woodlot Alternatives, Inc. during the months of August through November 2006.
- 2) All wetlands, regardless of size or type, are regulated by the US Army Corps of Engineers. All wetlands and streams, regardless of size or type, are regulated in organized towns by the Maine Department of Environmental Protection and in unorganized townships by the Maine Land Use Regulation Commission.
- 3) Basemap data including existing roads derived from a combination of GPS survey data (1994-2005) and ME OGIS USGS Quad data.
- 4) This map is for illustration purposes only.

**LEGEND**

- PREFERRED 115kv TRANSMISSION LINE ROUTE
- ALTERNATIVE 115kv TRANSMISSION LINE ROUTE (2000)
- WETLANDS IDENTIFIED BY WOODLOT (2006)
- STREAM IDENTIFIED BY WOODLOT (2006)
- USGS STREAM/BROOK

**HYDROLOGIC RESOURCE**

- SEEPS
- UNDERGROUND DRAINAGE
- SURFACE DRAINAGE
- INTERMITTENT DRAINAGE
- ANTHROPOMORPHIC DRAINAGE



SHEET 1 OF 3

NO.	REVISIONS	DATE
1	REVISED FROM 2005 APPLICATION	06/22/07

SHEET TITLE: 115KV TRANSMISSION CORRIDOR  
NATURAL COMMUNITY MAP  
SCALE: 1"=800'  
DATE: JUNE 2007

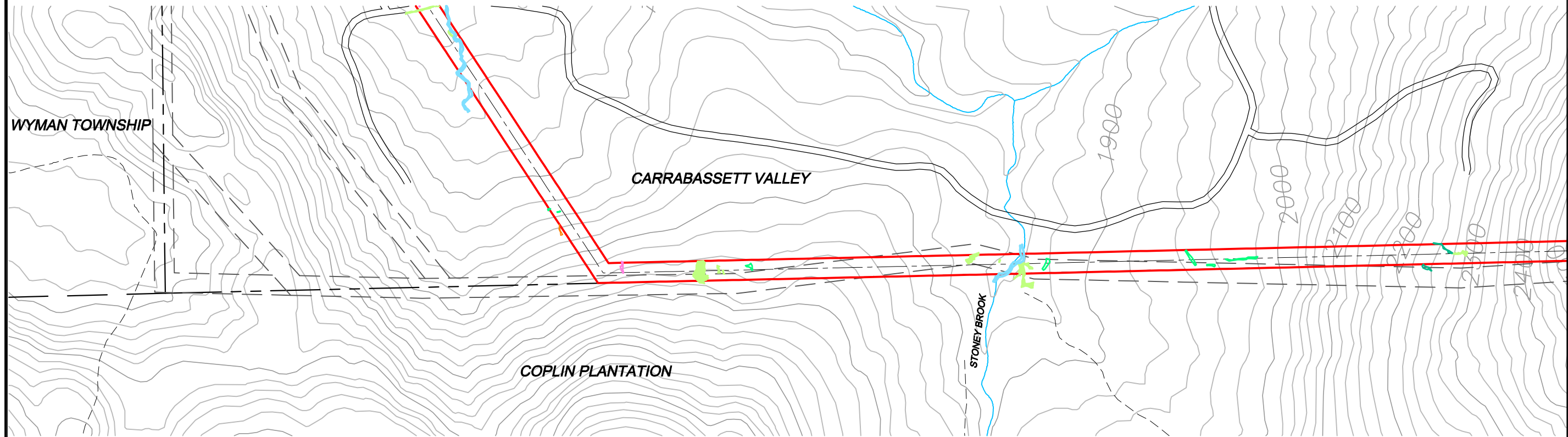
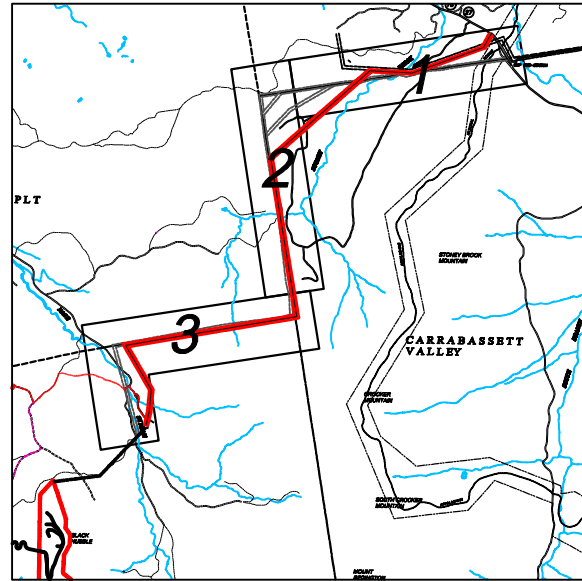
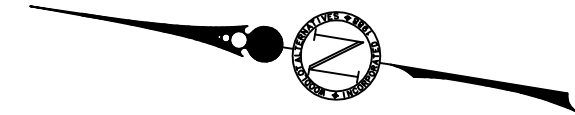
PROJECT: BLACK NUBBLE WIND FARM  
MAINE MOUNTAIN POWER, LLC  
ADDRESS: 57 RIVER ROAD  
YARMOUTH, MAINE



PROJ. NO. 102127  
FIGURE NO.

7-5

# 115kv TRANSMISSION CORRIDOR NATURAL COMMUNITY MAP



**Notes:**

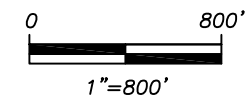
- 1) Wetlands, streams, and hydrologic resources were verified and delineated by Woodlot Alternatives, Inc. during the months of August through November 2006.
- 2) All wetlands, regardless of size or type, are regulated by the US Army Corps of Engineers. All wetlands and streams, regardless of size or type, are regulated in organized towns by the Maine Department of Environmental Protection and in unorganized townships by the Maine Land Use Regulation Commission.
- 3) Basemap data including existing roads derived from a combination of GPS survey data (1994-2005) and ME OGIS USGS Quad data.
- 4) This map is for illustration purposes only.

**LEGEND**

- PREFERRED 115kv TRANSMISSION LINE ROUTE
- ALTERNATIVE 115kv TRANSMISSION LINE ROUTE (2000)
- WETLANDS IDENTIFIED BY WOODLOT (2006)
- STREAM IDENTIFIED BY WOODLOT (2006)
- USGS STREAM/BROOK

**HYDROLOGIC RESOURCE**

- SEEPS
- UNDERGROUND DRAINAGE
- SURFACE DRAINAGE
- INTERMITTENT DRAINAGE
- ANTHROPOMORPHIC DRAINAGE



SHEET 2 OF 3

NO.	REVISIONS	DATE
1	REVISED FROM 2005 APPLICATION	06/22/07

SHEET TITLE: 115KV TRANSMISSION CORRIDOR  
NATURAL COMMUNITY MAP  
SCALE: 1"=800'  
DATE: JUNE 2007

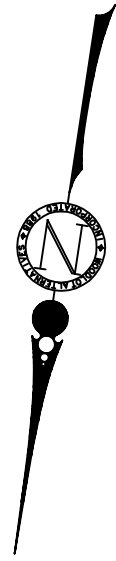
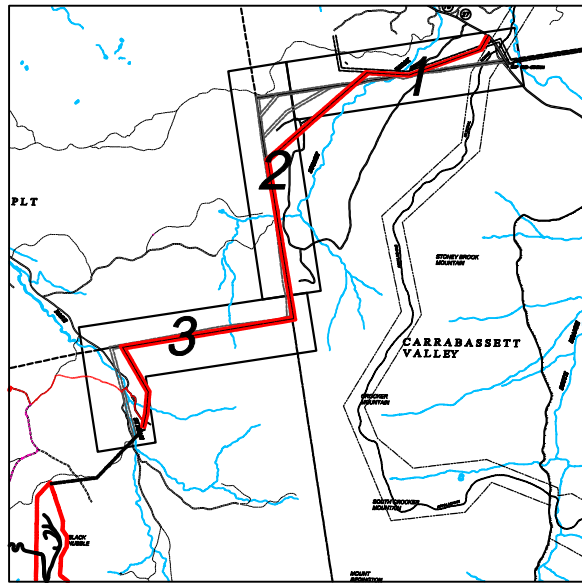
PROJECT: BLACK NUBBLE WIND FARM  
MAINE MOUNTAIN POWER, LLC  
ADDRESS: 57 RIVER ROAD  
YARMOUTH, MAINE

PREPARED BY: WOODLOT ALTERNATIVES, INC. ENVIRONMENTAL CONSULTANTS  
115kv-communities.dwg

PROJ. NO. 102127  
FIGURE NO.

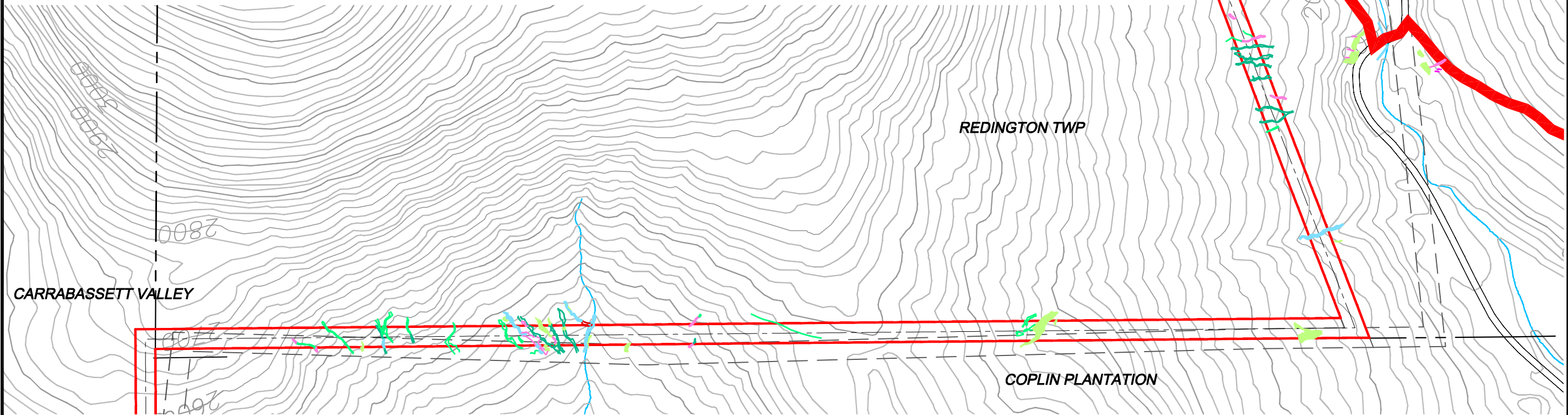
7-5



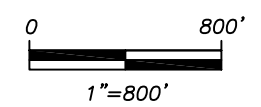


# 115kv TRANSMISSION CORRIDOR NATURAL COMMUNITY MAP

LEGEND		HYDROLOGIC RESOURCE	
	PREFERRED 115kv TRANSMISSION LINE ROUTE		SEEPS
	ALTERNATIVE 115kv TRANSMISSION LINE ROUTE (2000)		UNDERGROUND DRAINAGE
	WETLANDS IDENTIFIED BY WOODLOT (2006)		SURFACE DRAINAGE
	STREAM IDENTIFIED BY WOODLOT (2006)		INTERMITTENT DRAINAGE
	USGS STREAM/BROOK		ANTHROPOMORPHIC DRAINAGE



- Notes:
- 1) Wetlands, streams, and hydrologic resources were verified and delineated by Woodlot Alternatives, Inc. during the months of August through November 2006.
  - 2) All wetlands, regardless of size or type, are regulated by the US Army Corps of Engineers. All wetlands and streams, regardless of size or type, are regulated in organized towns by the Maine Department of Environmental Protection and in unorganized townships by the Maine Land Use Regulation Commission.
  - 3) Basemap data including existing roads derived from a combination of GPS survey data (1994-2005) and ME OGIS USGS Quad data.
  - 4) This map is for illustration purposes only.



PROJECT:	BLACK NUBBLE WIND FARM MAINE MOUNTAIN POWER, LLC	NO.	1	REVISED FROM	2005 APPLICATION	DATE	06/22/07
ADDRESS:	57 RIVER ROAD YARMOUTH, MAINE	SCALE:	1"=800'	REVISIONS			
SHEET TITLE:	115KV TRANSMISSION CORRIDOR NATURAL COMMUNITY MAP	DATE:	JUNE 2007				
PREPARED BY:	WOODLOT ALTERNATIVES, INC. ENVIRONMENTAL CONSULTANTS	FIGURE NO.	7-5				