

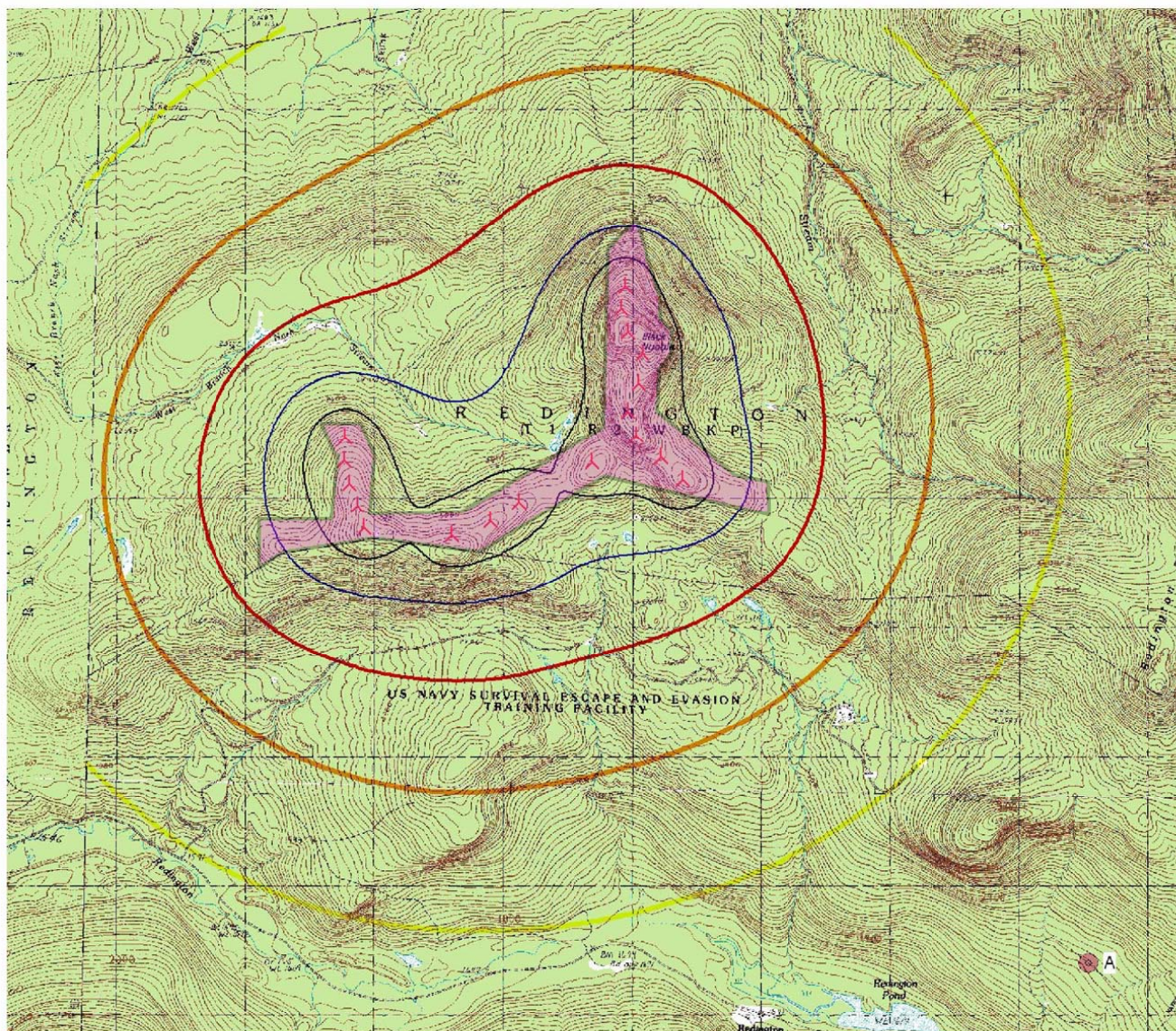
Project  
Reddington

Printed/Page  
6/26/2007 7:22 PM / 1  
Licensed user:  
**Vestas Americas**  
1181 SW Naito Parkway, Suite 100  
US-PORTLAND, OR 97201  
+1 503 327 2000

Calculated:  
6/26/2007 7:15 PM/2.5.6.79

**DECIBEL - Reddington high res background**

Calculation: 070626thmi Black Nubble 18 V90 3.0MW 109.3dB @ 8m/s File: 050901thmi Reddington high res background.tif



0 500 1000 1500 2000 m

Map: , Print scale 1:50,000, Map center UTM NAD 27 Zone: 19 East: 385,604 North: 4,986,183

Noise calculation model: ISO 9613-2 General. Wind speed: 8.0 m/s

New WTG

Noise sensitive area

Height above sea level from active line object

35.0 dB(A)

40.0 dB(A)

45.0 dB(A)

50.0 dB(A)

55.0 dB(A)