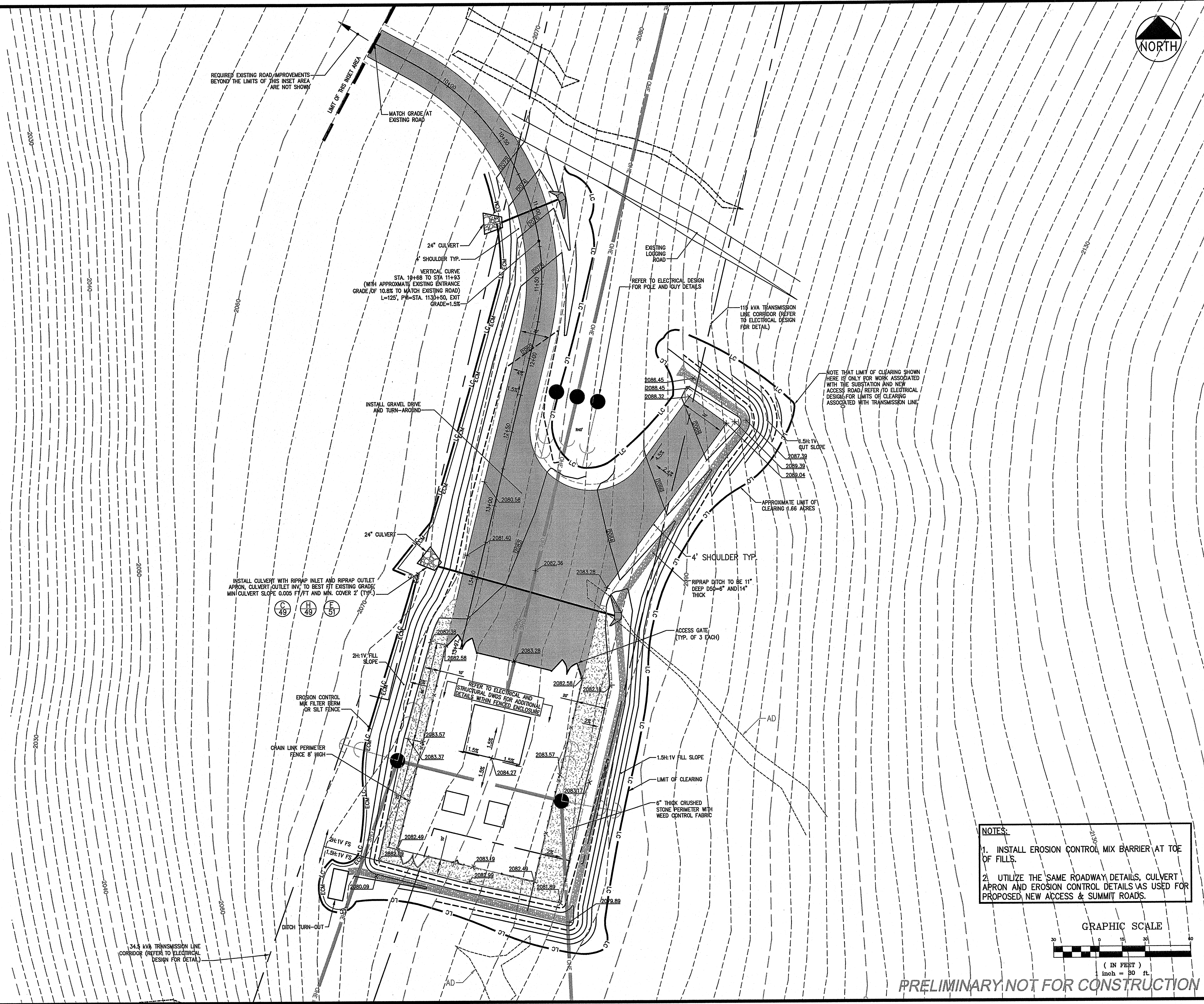


**APPENDIX 2.9**

**Substation Interconnect Layout, Grading and Erosion Control (C-44)**



REQUIRED EXISTING ROAD IMPROVEMENTS BEYOND THE LIMITS OF THIS INSET AREA ARE NOT SHOWN

MATCH GRADE AT EXISTING ROAD

24" CULVERT  
SHOULDER TYP.  
VERTICAL CURVE  
STA. 10+68 TO STA. 11+93  
(WITH APPROXIMATE EXISTING ENTRANCE GRADE OF 10.8% TO MATCH EXISTING ROAD)  
L=125', PVI=STA. 11.30+50, EXIT GRADE=1.5%

REFER TO ELECTRICAL DESIGN FOR POLE AND GUY DETAILS

115 KVA TRANSMISSION LINE CORRIDOR (REFER TO ELECTRICAL DESIGN FOR DETAIL)

NOTE THAT LIMIT OF CLEARING SHOWN HERE IS ONLY FOR WORK ASSOCIATED WITH THE SUBSTATION AND NEW ACCESS ROAD. REFER TO ELECTRICAL DESIGN FOR LIMITS OF CLEARING ASSOCIATED WITH TRANSMISSION LINE

APPROXIMATE LIMIT OF CLEARING 1.66 ACRES

4' SHOULDER TYP.

ACCESS GATE (TYP. OF 3 EACH)

REFER TO ELECTRICAL AND STRUCTURAL DWGS FOR ADDITIONAL DETAILS WITHIN FENCED ENCLOSURE

1.5H:1V FILL SLOPE

6" THICK CRUSHED STONE PERIMETER WITH WEED CONTROL FABRIC

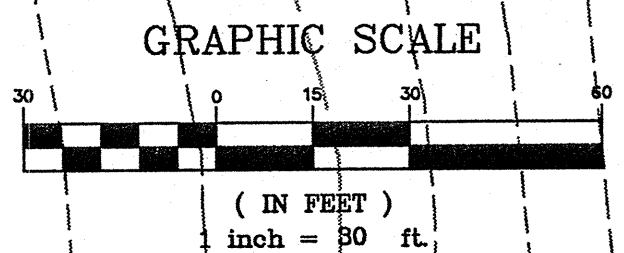
INSTALL CULVERT WITH RIPRAP INLET AND RIPRAP OUTLET APRON, CULVERT/OUTLET INV. TO BEST FIT EXISTING GRADE. MINI CULVERT SLOPE 0.005 FT/FT AND MIN. COVER 2' (TYP.)

EROSION CONTROL MIX FILTER BERM OR SILT FENCE

CHAIN LINK PERIMETER FENCE 8' HIGH

34.5 KVA TRANSMISSION LINE CORRIDOR (REFER TO ELECTRICAL DESIGN FOR DETAIL)

NOTES:  
1. INSTALL EROSION CONTROL MIX BARRIER AT TOE OF FILLS.  
2. UTILIZE THE SAME ROADWAY DETAILS, CULVERT APRON AND EROSION CONTROL DETAILS AS USED FOR PROPOSED NEW ACCESS & SUMMIT ROADS.

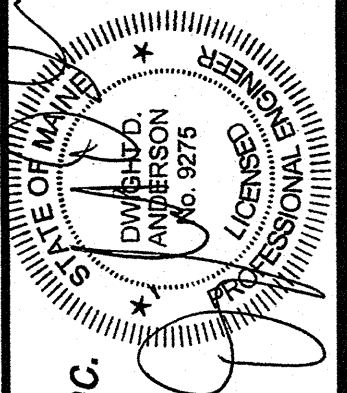


PRELIMINARY NOT FOR CONSTRUCTION

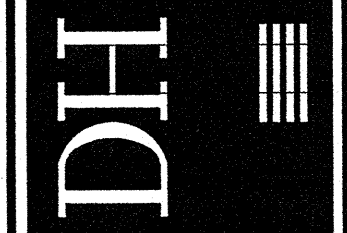
SUBSTATION INTERCONNECT LAYOUT,  
GRADING AND EROSION CONTROL PLAN

NO.	DATE	REVISIONS
3	06.22.07	REVISED FOR BLACK NUBBLE ONLY PROJECT
2	12.06.06	DESIGN SUBMISSION FOR CLIENT REVIEW
1	10.31.06	DRAFT SUBMISSION FOR CLIENT REVIEW - PARTIAL SET

BLACK NUBBLE WIND FARM PROJECT  
MAINE MOUNTAIN POWER LLC



DeLuca-Hoffman Associates, Inc.  
778 MAIN STREET, SUITE 8  
SOUTH PORTLAND, ME 04106  
207.775.1121  
www.delucahoffman.com



SHEET

C-44