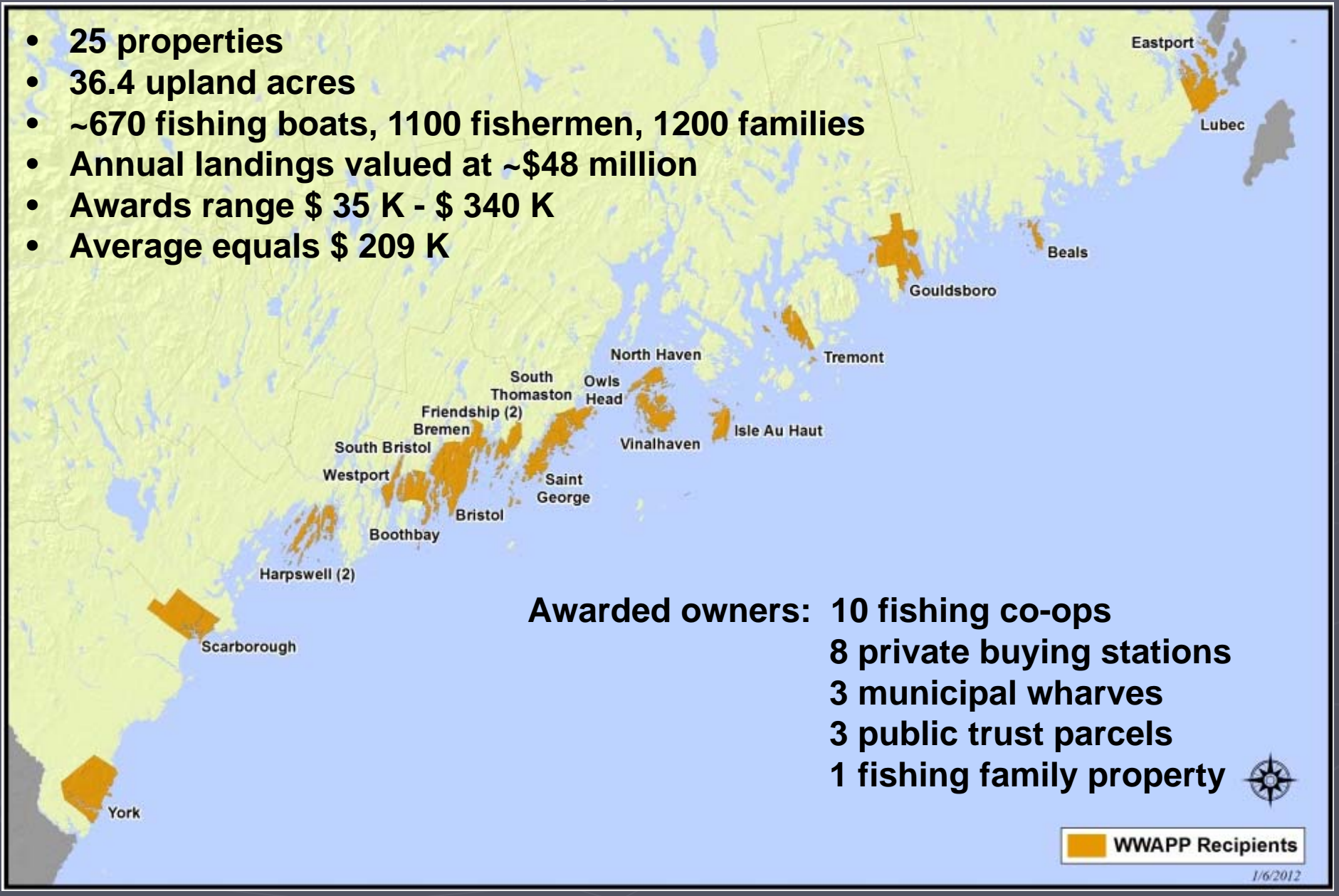


Program Impacts (2006-2015) with \$ 5.3 m Awarded to Applicants

- 25 properties
- 36.4 upland acres
- ~670 fishing boats, 1100 fishermen, 1200 families
- Annual landings valued at ~\$48 million
- Awards range \$ 35 K - \$ 340 K
- Average equals \$ 209 K



Awarded owners: 10 fishing co-ops
8 private buying stations
3 municipal wharves
3 public trust parcels
1 fishing family property

 WWAPP Recipients

