



HEALTH QUARTERLY STATEMENT

AS OF SEPTEMBER 30, 2021
OF THE CONDITION AND AFFAIRS OF THE

Empire HealthChoice HMO, Inc.

NAIC Group Code 0671 0671 NAIC Company Code 95433 Employer's ID Number 13-3874803
(Current) (Prior)

Organized under the Laws of New York, State of Domicile or Port of Entry NY

Country of Domicile United States of America

Licensed as business type: Health Maintenance Organization

Is HMO Federally Qualified? Yes [] No [X]

Incorporated/Organized 03/05/1996 Commenced Business 03/19/1996

Statutory Home Office 9 Pine Street, 14th Floor, New York, NY, US 10005
(Street and Number) (City or Town, State, Country and Zip Code)

Main Administrative Office 9 Pine Street, 14th Floor
(Street and Number)
New York, NY, US 10005 212-563-5570
(City or Town, State, Country and Zip Code) (Area Code) (Telephone Number)

Mail Address 9 Pine Street, 14th Floor, New York, NY, US 10005
(Street and Number or P.O. Box) (City or Town, State, Country and Zip Code)

Primary Location of Books and Records 220 Virginia Avenue
(Street and Number)
Indianapolis, IN, US 46204 866-583-6182
(City or Town, State, Country and Zip Code) (Area Code) (Telephone Number)

Internet Website Address www.empireblue.com

Statutory Statement Contact Leigh Barrett, 317-488-6816
(Name) (Area Code) (Telephone Number)
leigh.barrett@anthem.com 317-488-6200
(E-mail Address) (FAX Number)

OFFICERS

President, Chairperson and Chief Executive Officer Alan James Murray Treasurer Eric (Rick) Kenneth Noble
Secretary Jay Harry Wagner Assistant Secretary Patrick James O'Keeffe

OTHER

Vincent Edward Scher, Assistant Treasurer

DIRECTORS OR TRUSTEES

Alan James Murray Lois Susan Freedman Patrick James O'Keeffe
Smith, Raul Guillermo #

State of Indiana SS:
County of Johnson

The officers of this reporting entity being duly sworn, each depose and say that they are the described officers of said reporting entity, and that on the reporting period stated above, all of the herein described assets were the absolute property of the said reporting entity, free and clear from any liens or claims thereon, except as herein stated, and that this statement, together with related exhibits, schedules and explanations therein contained, annexed or referred to, is a full and true statement of all the assets and liabilities and of the condition and affairs of the said reporting entity as of the reporting period stated above, and of its income and deductions therefrom for the period ended, and have been completed in accordance with the NAIC Annual Statement Instructions and Accounting Practices and Procedures manual except to the extent that: (1) state law may differ; or, (2) that state rules or regulations require differences in reporting not related to accounting practices and procedures, according to the best of their information, knowledge and belief, respectively. Furthermore, the scope of this attestation by the described officers also includes the related corresponding electronic filing with the NAIC, when required, that is an exact copy (except for formatting differences due to electronic filing) of the enclosed statement. The electronic filing may be requested by various regulators in lieu of or in addition to the enclosed statement.

DocuSigned by:

2D880804431B4B6...

Alan James Murray
President

DocuSigned by:

12E492B114634B3...

Jay Harry Wagner
Secretary

DocuSigned by:

E580440298704FA...

Eric (Rick) Kenneth Noble
Treasurer

Subscribed and sworn to before me this 2nd day of November 2021

Rita F. Gentry
Executive Assistant
1/17/2029

- a. Is this an original filing? Yes [X] No []
b. If no,
1. State the amendment number.....
2. Date filed
3. Number of pages attached.....

Rita F. Gentry
Notary Public
SEAL
Johnson County, State of Indiana
My Commission Expires January 17, 2029
Commission No: NP0641321

STATEMENT AS OF SEPTEMBER 30, 2021 OF THE Empire HealthChoice HMO, Inc.

ASSETS

	Current Statement Date			4 December 31 Prior Year Net Admitted Assets
	1 Assets	2 Nonadmitted Assets	3 Net Admitted Assets (Cols. 1 - 2)	
1. Bonds	319,400,328		319,400,328	311,064,048
2. Stocks:				
2.1 Preferred stocks			0	0
2.2 Common stocks			0	0
3. Mortgage loans on real estate:				
3.1 First liens			0	0
3.2 Other than first liens.....			0	0
4. Real estate:				
4.1 Properties occupied by the company (less \$ encumbrances)			0	0
4.2 Properties held for the production of income (less \$ encumbrances)			0	0
4.3 Properties held for sale (less \$ encumbrances)			0	0
5. Cash (\$10,191,791), cash equivalents (\$0) and short-term investments (\$)	10,191,791		10,191,791	28,493,763
6. Contract loans (including \$ premium notes)			0	0
7. Derivatives			0	0
8. Other invested assets			0	0
9. Receivables for securities			0	0
10. Securities lending reinvested collateral assets	20,402,080		20,402,080	10,382,589
11. Aggregate write-ins for invested assets	0	0	0	0
12. Subtotals, cash and invested assets (Lines 1 to 11)	349,994,199	0	349,994,199	349,940,400
13. Title plants less \$ charged off (for Title insurers only)			0	0
14. Investment income due and accrued	2,733,809		2,733,809	2,939,671
15. Premiums and considerations:				
15.1 Uncollected premiums and agents' balances in the course of collection	8,525,857	1,786,976	6,738,881	5,923,724
15.2 Deferred premiums, agents' balances and installments booked but deferred and not yet due (including \$ earned but unbilled premiums)			0	0
15.3 Accrued retrospective premiums (\$1,939,652) and contracts subject to redetermination (\$21,660,198)	23,599,850		23,599,850	23,018,437
16. Reinsurance:				
16.1 Amounts recoverable from reinsurers			0	0
16.2 Funds held by or deposited with reinsured companies			0	0
16.3 Other amounts receivable under reinsurance contracts			0	0
17. Amounts receivable relating to uninsured plans	2,664,185	1,778,601	885,584	187,430
18.1 Current federal and foreign income tax recoverable and interest thereon	9,979,085		9,979,085	9,250,200
18.2 Net deferred tax asset			0	0
19. Guaranty funds receivable or on deposit			0	0
20. Electronic data processing equipment and software			0	0
21. Furniture and equipment, including health care delivery assets (\$)			0	0
22. Net adjustment in assets and liabilities due to foreign exchange rates			0	0
23. Receivables from parent, subsidiaries and affiliates			0	0
24. Health care (\$5,603,116) and other amounts receivable	22,409,405	16,806,289	5,603,116	6,790,234
25. Aggregate write-ins for other than invested assets	19,154,259	1,056,951	18,097,308	27,342,305
26. Total assets excluding Separate Accounts, Segregated Accounts and Protected Cell Accounts (Lines 12 to 25)	439,060,649	21,428,817	417,631,832	425,392,401
27. From Separate Accounts, Segregated Accounts and Protected Cell Accounts			0	0
28. Total (Lines 26 and 27)	439,060,649	21,428,817	417,631,832	425,392,401
DETAILS OF WRITE-INS				
1101.				
1102.				
1103.				
1198. Summary of remaining write-ins for Line 11 from overflow page	0	0	0	0
1199. Totals (Lines 1101 through 1103 plus 1198)(Line 11 above)	0	0	0	0
2501. Medicare Receivables	11,507,589		11,507,589	19,775,377
2502. City Income Tax Recoverable	2,690,087		2,690,087	542,192
2503. Prepaid Expenses	2,350,946	953,288	1,397,658	1,248,377
2598. Summary of remaining write-ins for Line 25 from overflow page	2,605,637	103,663	2,501,974	5,776,359
2599. Totals (Lines 2501 through 2503 plus 2598)(Line 25 above)	19,154,259	1,056,951	18,097,308	27,342,305

LIABILITIES, CAPITAL AND SURPLUS

	Current Period			Prior Year
	1 Covered	2 Uncovered	3 Total	4 Total
1. Claims unpaid (less \$ reinsurance ceded)	88,747,656		88,747,656	122,196,630
2. Accrued medical incentive pool and bonus amounts	26,544,042		26,544,042	21,929,771
3. Unpaid claims adjustment expenses	1,968,466		1,968,466	2,674,150
4. Aggregate health policy reserves, including the liability of \$0 for medical loss ratio rebate per the Public Health Service Act	28,570,219		28,570,219	18,579,698
5. Aggregate life policy reserves			0	0
6. Property/casualty unearned premium reserve			0	0
7. Aggregate health claim reserves			0	1,030
8. Premiums received in advance	578,293		578,293	478,284
9. General expenses due or accrued	927,868		927,868	1,950,187
10.1 Current federal and foreign income tax payable and interest thereon (including \$ on realized gains (losses))			0	0
10.2 Net deferred tax liability			0	0
11. Ceded reinsurance premiums payable			0	0
12. Amounts withheld or retained for the account of others	1,518,061		1,518,061	1,145,158
13. Remittances and items not allocated	3,801,881		3,801,881	3,559,413
14. Borrowed money (including \$ current) and interest thereon \$ (including \$ current)			0	0
15. Amounts due to parent, subsidiaries and affiliates	110,162,603		110,162,603	59,856,905
16. Derivatives			0	0
17. Payable for securities	780,456		780,456	0
18. Payable for securities lending	20,402,080		20,402,080	10,382,589
19. Funds held under reinsurance treaties (with \$ authorized reinsurers, \$ unauthorized reinsurers and \$ certified reinsurers)			0	0
20. Reinsurance in unauthorized and certified (\$) companies			0	0
21. Net adjustments in assets and liabilities due to foreign exchange rates			0	0
22. Liability for amounts held under uninsured plans			0	0
23. Aggregate write-ins for other liabilities (including \$2,387,706 current)	3,284,517	0	3,284,517	2,436,845
24. Total liabilities (Lines 1 to 23)	287,286,142	0	287,286,142	245,190,660
25. Aggregate write-ins for special surplus funds	XXX	XXX	0	0
26. Common capital stock	XXX	XXX	2	2
27. Preferred capital stock	XXX	XXX		
28. Gross paid in and contributed surplus	XXX	XXX	101,999,998	101,999,998
29. Surplus notes	XXX	XXX		
30. Aggregate write-ins for other than special surplus funds	XXX	XXX	118,700,549	118,700,549
31. Unassigned funds (surplus)	XXX	XXX	(90,354,859)	(40,498,808)
32. Less treasury stock, at cost:				
32.1 shares common (value included in Line 26 \$)	XXX	XXX		
32.2 shares preferred (value included in Line 27 \$)	XXX	XXX		
33. Total capital and surplus (Lines 25 to 31 minus Line 32)	XXX	XXX	130,345,690	180,201,741
34. Total liabilities, capital and surplus (Lines 24 and 33)	XXX	XXX	417,631,832	425,392,401
DETAILS OF WRITE-INS				
2301. Miscellaneous Medicare Liabilities	1,865,836		1,865,836	949,315
2302. Escheat Liability	1,052,586		1,052,586	765,564
2303. Miscellaneous Liability	224,503		224,503	261,456
2398. Summary of remaining write-ins for Line 23 from overflow page	141,592	0	141,592	460,510
2399. Totals (Lines 2301 through 2303 plus 2398)(Line 23 above)	3,284,517	0	3,284,517	2,436,845
2501.	XXX	XXX		
2502.	XXX	XXX		
2503.	XXX	XXX		
2598. Summary of remaining write-ins for Line 25 from overflow page	XXX	XXX	0	0
2599. Totals (Lines 2501 through 2503 plus 2598)(Line 25 above)	XXX	XXX	0	0
3001. Required Reserves	XXX	XXX	118,700,549	118,700,549
3002.	XXX	XXX		
3003.	XXX	XXX		
3098. Summary of remaining write-ins for Line 30 from overflow page	XXX	XXX	0	0
3099. Totals (Lines 3001 through 3003 plus 3098)(Line 30 above)	XXX	XXX	118,700,549	118,700,549

STATEMENT OF REVENUE AND EXPENSES

	Current Year To Date		Prior Year To Date	Prior Year Ended December 31
	1 Uncovered	2 Total	3 Total	4 Total
1. Member Months	XXX	540,022	675,002	898,761
2. Net premium income (including \$ non-health premium income)	XXX	576,852,155	713,991,642	949,604,393
3. Change in unearned premium reserves and reserve for rate credits	XXX	(4,478,745)	7,301,826	2,863,580
4. Fee-for-service (net of \$ medical expenses)	XXX			
5. Risk revenue	XXX			
6. Aggregate write-ins for other health care related revenues	XXX	0	0	0
7. Aggregate write-ins for other non-health revenues	XXX	0	0	0
8. Total revenues (Lines 2 to 7)	XXX	572,373,410	721,293,468	952,467,973
Hospital and Medical:				
9. Hospital/medical benefits		408,619,677	482,524,877	643,366,771
10. Other professional services		14,386,160	18,964,914	26,112,583
11. Outside referrals		67,240,952	31,597,871	59,798,654
12. Emergency room and out-of-area		18,590,935	19,843,012	28,467,417
13. Prescription drugs		32,636,704	49,499,021	61,632,989
14. Aggregate write-ins for other hospital and medical	0	0	(147,517)	(301,376)
15. Incentive pool, withhold adjustments and bonus amounts		11,374,132	6,016,144	22,169,453
16. Subtotal (Lines 9 to 15)	0	552,848,560	608,298,322	841,246,491
Less:				
17. Net reinsurance recoveries				
18. Total hospital and medical (Lines 16 minus 17)	0	552,848,560	608,298,322	841,246,491
19. Non-health claims (net)				
20. Claims adjustment expenses, including \$ 24,057,759 cost containment expenses		33,683,950	40,530,300	54,590,226
21. General administrative expenses		36,133,511	70,408,065	92,710,145
22. Increase in reserves for life and accident and health contracts (including \$ increase in reserves for life only)		8,034,967	(38,078,717)	(33,112,103)
23. Total underwriting deductions (Lines 18 through 22)	0	630,700,988	681,157,970	955,434,759
24. Net underwriting gain or (loss) (Lines 8 minus 23)	XXX	(58,327,578)	40,135,498	(2,966,786)
25. Net investment income earned		6,338,607	6,607,143	8,662,295
26. Net realized capital gains (losses) less capital gains tax of \$ 194,444		522,207	2,011,991	2,479,770
27. Net investment gains (losses) (Lines 25 plus 26)	0	6,860,814	8,619,134	11,142,065
28. Net gain or (loss) from agents' or premium balances charged off [(amount recovered \$) (amount charged off \$ (350,226))]		(350,226)	(175,386)	(210,585)
29. Aggregate write-ins for other income or expenses	0	84,329	(215,501)	(188,464)
30. Net income or (loss) after capital gains tax and before all other federal income taxes (Lines 24 plus 27 plus 28 plus 29)	XXX	(51,732,661)	48,363,745	7,776,230
31. Federal and foreign income taxes incurred	XXX	(10,151,214)	5,053,766	(2,379,942)
32. Net income (loss) (Lines 30 minus 31)	XXX	(41,581,447)	43,309,979	10,156,172
DETAILS OF WRITE-INS				
0601.	XXX			
0602.	XXX			
0603.	XXX			
0698. Summary of remaining write-ins for Line 6 from overflow page	XXX	0	0	0
0699. Totals (Lines 0601 through 0603 plus 0698)(Line 6 above)	XXX	0	0	0
0701.	XXX			
0702.	XXX			
0703.	XXX			
0798. Summary of remaining write-ins for Line 7 from overflow page	XXX	0	0	0
0799. Totals (Lines 0701 through 0703 plus 0798)(Line 7 above)	XXX	0	0	0
1401. Pool Recoveries - Stop Loss			(147,517)	(301,376)
1402.				
1403.				
1498. Summary of remaining write-ins for Line 14 from overflow page	0	0	0	0
1499. Totals (Lines 1401 through 1403 plus 1498)(Line 14 above)	0	0	(147,517)	(301,376)
2901. Miscellaneous (expense) income		84,329	(215,501)	(188,464)
2902.				
2903.				
2998. Summary of remaining write-ins for Line 29 from overflow page	0	0	0	0
2999. Totals (Lines 2901 through 2903 plus 2998)(Line 29 above)	0	84,329	(215,501)	(188,464)

STATEMENT OF REVENUE AND EXPENSES (Continued)

	1 Current Year to Date	2 Prior Year to Date	3 Prior Year Ended December 31
CAPITAL AND SURPLUS ACCOUNT			
33. Capital and surplus prior reporting year.....	180,201,741	157,155,770	157,155,770
34. Net income or (loss) from Line 32.....	(41,581,447)	43,309,979	10,156,172
35. Change in valuation basis of aggregate policy and claim reserves.....			
36. Change in net unrealized capital gains (losses) less capital gains tax of \$ 49,606.....	186,612	(170,808)	(175,723)
37. Change in net unrealized foreign exchange capital gain or (loss).....			
38. Change in net deferred income tax.....	49,606	7,372,725	(46,712)
39. Change in nonadmitted assets.....	(8,510,822)	(7,185,039)	13,112,234
40. Change in unauthorized and certified reinsurance.....	0	0	0
41. Change in treasury stock.....	0	0	0
42. Change in surplus notes.....	0	0	0
43. Cumulative effect of changes in accounting principles.....			
44. Capital Changes:			
44.1 Paid in.....			0
44.2 Transferred from surplus (Stock Dividend).....	0	0	0
44.3 Transferred to surplus.....			
45. Surplus adjustments:			
45.1 Paid in.....	0	0	0
45.2 Transferred to capital (Stock Dividend).....			
45.3 Transferred from capital.....			
46. Dividends to stockholders.....			
47. Aggregate write-ins for gains or (losses) in surplus.....	0	0	0
48. Net change in capital & surplus (Lines 34 to 47).....	(49,856,051)	43,326,857	23,045,971
49. Capital and surplus end of reporting period (Line 33 plus 48)	130,345,690	200,482,627	180,201,741
DETAILS OF WRITE-INS			
4701.			
4702.			
4703.			
4798. Summary of remaining write-ins for Line 47 from overflow page.....	0	0	0
4799. Totals (Lines 4701 through 4703 plus 4798)(Line 47 above)	0	0	0

CASH FLOW

	1 Current Year To Date	2 Prior Year To Date	3 Prior Year Ended December 31
Cash from Operations			
1. Premiums collected net of reinsurance	573,152,977	721,914,069	953,888,306
2. Net investment income	8,630,537	8,955,447	11,544,219
3. Miscellaneous income	0	0	0
4. Total (Lines 1 to 3)	581,783,514	730,869,516	965,432,525
5. Benefit and loss related payments	589,810,151	598,428,531	792,879,404
6. Net transfers to Separate Accounts, Segregated Accounts and Protected Cell Accounts			
7. Commissions, expenses paid and aggregate write-ins for deductions	76,124,864	107,376,803	148,138,648
8. Dividends paid to policyholders			
9. Federal and foreign income taxes paid (recovered) net of \$ 194,444 tax on capital gains (losses)	(9,227,885)	7,505,334	3,756,144
10. Total (Lines 5 through 9)	656,707,130	713,310,668	944,774,196
11. Net cash from operations (Line 4 minus Line 10)	(74,923,616)	17,558,848	20,658,329
Cash from Investments			
12. Proceeds from investments sold, matured or repaid:			
12.1 Bonds	55,184,746	75,375,293	95,453,423
12.2 Stocks	0	0	0
12.3 Mortgage loans	0	0	0
12.4 Real estate	0	0	0
12.5 Other invested assets	0	0	0
12.6 Net gains or (losses) on cash, cash equivalents and short-term investments	0	(19,992)	(19,992)
12.7 Miscellaneous proceeds	780,456	1,683,031	0
12.8 Total investment proceeds (Lines 12.1 to 12.7)	55,965,202	77,038,332	95,433,431
13. Cost of investments acquired (long-term only):			
13.1 Bonds	64,812,532	75,312,443	93,190,892
13.2 Stocks	0	0	0
13.3 Mortgage loans	0	0	0
13.4 Real estate	0	0	0
13.5 Other invested assets	0	0	0
13.6 Miscellaneous applications	10,019,491	438,646	6,546,266
13.7 Total investments acquired (Lines 13.1 to 13.6)	74,832,023	75,751,089	99,737,158
14. Net increase (or decrease) in contract loans and premium notes	0	0	0
15. Net cash from investments (Line 12.8 minus Line 13.7 and Line 14)	(18,866,821)	1,287,243	(4,303,727)
Cash from Financing and Miscellaneous Sources			
16. Cash provided (applied):			
16.1 Surplus notes, capital notes	0	0	0
16.2 Capital and paid in surplus, less treasury stock	0	0	0
16.3 Borrowed funds	0	0	0
16.4 Net deposits on deposit-type contracts and other insurance liabilities	0	0	0
16.5 Dividends to stockholders	0	0	0
16.6 Other cash provided (applied)	75,488,465	(6,435,286)	3,492,680
17. Net cash from financing and miscellaneous sources (Line 16.1 through Line 16.4 minus Line 16.5 plus Line 16.6)	75,488,465	(6,435,286)	3,492,680
RECONCILIATION OF CASH, CASH EQUIVALENTS AND SHORT-TERM INVESTMENTS			
18. Net change in cash, cash equivalents and short-term investments (Line 11, plus Lines 15 and 17)	(18,301,972)	12,410,805	19,847,282
19. Cash, cash equivalents and short-term investments:			
19.1 Beginning of year	28,493,763	8,646,481	8,646,481
19.2 End of period (Line 18 plus Line 19.1)	10,191,791	21,057,286	28,493,763

Note: Supplemental disclosures of cash flow information for non-cash transactions:

STATEMENT AS OF SEPTEMBER 30, 2021 OF THE Empire HealthChoice HMO, Inc.

EXHIBIT OF PREMIUMS, ENROLLMENT AND UTILIZATION

	1 Total	Comprehensive (Hospital & Medical)		4 Medicare Supplement	5 Vision Only	6 Dental Only	7 Federal Employees Health Benefit Plan	8 Title XVIII Medicare	9 Title XIX Medicaid	10 Other
		2 Individual	3 Group							
Total Members at end of:										
1. Prior Year	73,879	0	1,921	0	0	0	0	71,958	0	0
2. First Quarter	61,036	0	1,935	0	0	0	0	59,101	0	0
3. Second Quarter	59,215	0	1,946	0	0	0	0	57,269	0	0
4. Third Quarter	57,775		1,995					55,780		
5. Current Year	0									
6. Current Year Member Months	540,022		17,577					522,445		
Total Member Ambulatory Encounters for Period:										
7. Physician	778,557		16,272					762,285		
8. Non-Physician	443,975		13,162					430,813		
9. Total	1,222,532	0	29,434	0	0	0	0	1,193,098	0	0
10. Hospital Patient Days Incurred	82,023		723					81,300		
11. Number of Inpatient Admissions	10,302		120					10,182		
12. Health Premiums Written (a)	576,852,155	789,866	13,810,612					562,251,678		
13. Life Premiums Direct	0									
14. Property/Casualty Premiums Written	0									
15. Health Premiums Earned	572,373,410	789,866	13,810,612					557,772,933		
16. Property/Casualty Premiums Earned	0									
17. Amount Paid for Provision of Health Care Services.....	581,684,293	5,408,770	5,987,402					570,287,600		521
18. Amount Incurred for Provision of Health Care Services	552,848,560	1,100,706	10,714,833					541,034,500		(1,479)

(a) For health premiums written: amount of Medicare Title XVIII exempt from state taxes or fees \$562,251,678

UNDERWRITING AND INVESTMENT EXHIBIT

ANALYSIS OF CLAIMS UNPAID - PRIOR YEAR - NET OF REINSURANCE

Line of Business	Claims Paid Year to Date		Liability End of Current Quarter		5 Claims Incurred in Prior Years (Columns 1 + 3)	6 Estimated Claim Reserve and Claim Liability December 31 of Prior Year
	1 On Claims Incurred Prior to January 1 of Current Year	2 On Claims Incurred During the Year	3 On Claims Unpaid Dec. 31 of Prior Year	4 On Claims Incurred During the Year		
1. Comprehensive (hospital and medical)	3,835,937	17,394,904	766,127	2,485,503	4,602,064	2,824,060
2. Medicare Supplement					0	0
3. Dental Only					0	0
4. Vision Only					0	0
5. Federal Employees Health Benefits Plan					0	0
6. Title XVIII - Medicare	94,071,627	482,030,666	3,496,267	81,999,759	97,567,894	119,371,600
7. Title XIX - Medicaid					0	0
8. Other health	1,179	(476)			1,179	2,000
9. Health subtotal (Lines 1 to 8)	97,908,743	499,425,094	4,262,394	84,485,262	102,171,137	122,197,660
10. Healthcare receivables (a)	3,798,664	18,610,741			3,798,664	0
11. Other non-health					0	0
12. Medical incentive pools and bonus amounts	2,540,488	4,219,373	24,681,524	1,862,518	27,222,012	21,929,771
13. Totals (Lines 9-10+11+12)	96,650,567	485,033,726	28,943,918	86,347,780	125,594,485	144,127,431

(a) Excludes \$ loans or advances to providers not yet expensed.

STATEMENT AS OF September 30, 2021 OF THE Empire HealthChoice HMO, Inc.
NOTES TO FINANCIAL STATEMENTS

For the purposes of the quarterly interim financial information, it is presumed that the users of the interim financial information have read or have access to the Annual Statement as of December 31, 2020. This presentation addresses only significant events occurring since the last Annual Statement.

1. Summary of Significant Accounting Policies and Going Concern

A. Accounting Practices

The accompanying financial statements of Empire HealthChoice HMO, Inc. (the “Company”) have been prepared in conformity with the National Association of Insurance Commissioners’ (“NAIC”) *Annual Statement Instructions* and in accordance with accounting practices prescribed or permitted by the New York State Department of Financial Services (the “Department”). The Department has adopted accounting policies found in NAIC SAP as a component of prescribed accounting practices. Additionally, the Department has adopted certain prescribed accounting practices that differ from those found in NAIC SAP, which impact the Company, specifically 1) overdue premiums (in excess of 90 days) from state and local governments or any of its instrumentalities shall be admitted assets; in NAIC SAP, premiums over 90 days due are non-admitted; 2) certain estimated market stabilization reinsurance/pooling recoverables, stop-loss recoverables, and reinsurance recoverables are admitted assets; in NAIC SAP, these recoverables are admitted only upon notification of the refund; and 3) prepaid broker commissions are admitted assets; in NAIC SAP, prepaid broker commissions are nonadmitted assets. The Department has the right to permit other specific practices that deviate from prescribed practices. The Company has employed no permitted practices in preparing the accompanying statutory-basis financial statements.

A reconciliation of the Company’s net income and capital and surplus between NAIC SAP and practices prescribed and permitted by the Department is shown below:

	<u>SSAP #</u>	<u>F/S Page</u>	<u>F/S Line #</u>	<u>September 30, 2021</u>	<u>December 31, 2020</u>
<u>Net Income</u>					
(1) Empire HealthChoice HMO, Inc. state basis (Page 4, Line 32, Columns 2 & 4)	XXX	XXX	XXX	\$ (41,581,447)	\$ 10,156,172
(2) State Prescribed Practices that is an increase/(decrease) from NAIC SAP:				—	—
(3) State Permitted Practices that is an increase/(decrease) from NAIC SAP:				—	—
(4) NAIC SAP (1-2-3=4)	XXX	XXX	XXX	<u>\$ (41,581,447)</u>	<u>\$ 10,156,172</u>
<u>Surplus</u>					
(5) Empire HealthChoice HMO, Inc. state basis (Page 3, Line 33, Columns 3 & 4)	XXX	XXX	XXX	\$ 130,345,690	\$ 180,201,741
(6) State Prescribed Practices that is an increase/(decrease) from NAIC SAP:					
Pooling/Stop Loss recoverable	6	2	25	194,103	194,103
Prepaid Brokers' Commissions	29	2	25	1,397,658	1,248,377
Overdue local government premiums	6	2	15.1	339,682	424,689
(7) State Permitted Practices that is an increase/(decrease) from NAIC SAP:				—	—
(8) NAIC SAP (5-6-7=8)	XXX	XXX	XXX	<u>\$ 128,414,247</u>	<u>\$ 178,334,572</u>

B. Use of Estimates in the Preparation of the Financial Statements

No significant change.

STATEMENT AS OF September 30, 2021 OF THE Empire HealthChoice HMO, Inc.
NOTES TO FINANCIAL STATEMENTS

C. Accounting Policies

- (1) No significant change.
- (2) Investment grade bonds not backed by other loans are stated at amortized cost, with amortization calculated based on the modified scientific method, using lower of yield to call or yield to maturity. Non-investment grade bonds are stated at the lower of amortized cost or fair value as determined by various third-party pricing sources.
- (3) - (5) No significant change.
- (6) Loan-backed securities are stated at amortized cost. Pre-payment assumptions for loan-backed securities and structured securities were obtained from broker-dealer survey values or internal estimates. These assumptions are consistent with the current interest rate and economic environment. The retrospective adjustment method is used to value all loan-backed securities. Non-investment grade loan-backed securities are stated at the lower of amortized cost or fair value.
- (7) - (14) No significant change.

D. Going Concern

Not applicable.

2. Accounting Changes and Corrections of Errors

Not applicable.

3. Business Combinations and Goodwill

Not applicable.

4. Discontinued Operations

Not applicable.

5. Investments

A. - C.

Not applicable.

D. Loan-Backed Securities

- (1) Prepayment assumptions for single-class and multi-class mortgage-backed and asset-backed securities were obtained from broker-dealer survey values or internal estimates. The Company used various third-party pricing sources in determining the market value of its loan-backed securities.
- (2) The Company did not recognize other-than-temporary impairments ("OTTI") on its loan-backed securities during the nine months ended September 30, 2021.
- (3) The Company did not recognize OTTI on its loan-backed securities at September 30, 2021.

STATEMENT AS OF September 30, 2021 OF THE Empire HealthChoice HMO, Inc.
NOTES TO FINANCIAL STATEMENTS

(4) All impaired securities (fair value is less than cost or amortized cost) for which an OTTI has not been recognized in earnings as a realized loss (including securities with a recognized OTTI for non-interest related declines when a non-recognized interest related impairment remains):

a.	The aggregate amount of unrealized losses:		
	1. Less than 12 Months	\$	(135,055)
	2. 12 Months or Longer	\$	—
b.	The aggregate related fair value of securities with unrealized losses:		
	1. Less than 12 Months	\$	21,718,275
	2. 12 Months or Longer	\$	—

(5) The Company’s bond portfolio is sensitive to interest rate fluctuations, which impact the fair value of individual securities. Unrealized losses on bonds were primarily caused by the effects of the interest rate environment and the widening of credit spreads on certain securities. The Company currently has the ability and intent to hold these securities until their full cost can be recovered. Therefore, the Company does not believe the unrealized losses represent an OTTI at September 30, 2021.

E. Dollar Repurchase Agreements and/or Securities Lending Transactions

(1) Not applicable.

(2) No significant change.

(3) Collateral Received

a.	No significant change.		
b.	The fair value of that collateral and of the portion of that collateral that it has sold or repledged	\$	<u>20,403,390</u>
c.	No significant change.		

(4) Not applicable.

(5) No significant change.

(6) Not applicable.

(7) Not applicable.

F. Repurchase Agreements Transactions Accounted for as Secured Borrowing

The Company did not enter into repurchase agreement transactions accounted for as secured borrowing at September 30, 2021.

G. Reverse Repurchase Agreements Transactions Accounted for as Secured Borrowing

The Company did not enter into reverse repurchase agreement transactions accounted for as a secured borrowing at September 30, 2021.

H. Repurchase Agreements Transactions Accounted for as a Sale

The Company did not enter into repurchase agreement transactions accounted for as a sale at September 30 2021.

I. Reverse Repurchase Agreements Transactions Accounted for as a Sale

The Company did not enter into reverse repurchase agreement transactions accounted for as a sale at September 30, 2021.

STATEMENT AS OF September 30, 2021 OF THE Empire HealthChoice HMO, Inc.
NOTES TO FINANCIAL STATEMENTS

J. Real Estate

No significant change.

K. Investments in Low-Income Housing Tax Credits

No significant change.

L. Restricted Assets

No significant change.

M. Working Capital Finance Investments

Not applicable.

N. Offsetting and Netting of Assets and Liabilities

The Company had no netted assets and liabilities at September 30, 2021.

O. 5GI Securities

The Company has no 5GI Securities as of September 30, 2021.

P. Short Sales

The Company did not have any short sales at September 30, 2021.

Q. Prepayment Penalty and Acceleration Fees

	General Account
(1) Number of CUSIPs	3
(2) Aggregate Amount of Investment Income \$	212,192

R. Reporting Entity's Share of Cash Pool by Asset Type

The Company did not participate in a cash pool at September 30, 2021.

6. Joint Ventures, Partnerships and Limited Liability Companies

Not applicable.

7. Investment Income

No significant change.

8. Derivative Instruments

Not applicable.

9. Income Taxes

No significant change.

STATEMENT AS OF September 30, 2021 OF THE Empire HealthChoice HMO, Inc.
NOTES TO FINANCIAL STATEMENTS

10. Information Concerning Parent, Subsidiaries, Affiliates and Other Related Parties

A. Nature of the Relationship

No significant change.

B. Significant Transactions for the Period

There were no significant transactions at September 30, 2021.

C. Transactions with Related Parties who are not Reported on Schedule Y

No significant change.

D. Amounts Due to or from Related Parties

At September 30, 2021, the Company reported no amounts due from affiliates and \$110,162,603 due to affiliates. The payable balance represents intercompany transactions that will be settled in accordance with the settlement terms of the intercompany agreement.

E. - O.

No significant change.

11. Debt

Not applicable.

12. Retirement Plans, Deferred Compensation, Postemployment Benefits and Compensated Absences and Other Postretirement Benefit Plans

A. Defined Benefit Plan

Not applicable.

B. Not applicable.

C. Not applicable.

D. Not applicable.

E. Defined Contribution Plans

Not applicable.

F. Multiemployer Plans

The Company does not participate in a multiemployer plan.

G. Consolidated/Holding Company Plans

No significant change.

H. Post Employment Benefits and Compensated Absences

Not applicable.

STATEMENT AS OF September 30, 2021 OF THE Empire HealthChoice HMO, Inc.
NOTES TO FINANCIAL STATEMENTS

I. Impact of Medicare Modernization Act on Postretirement Benefits (INT 04-17)

Not applicable.

13. Capital and Surplus, Shareholders' Dividend Restrictions and Quasi-Reorganizations

No significant change.

14. Liabilities, Contingencies and Assessments

No significant change.

15. Leases

No significant change.

16. Information About Financial Instruments With Off-Balance Sheet Risk and Financial Instruments With Concentrations of Credit Risk

Not applicable.

17. Sale, Transfer and Servicing of Financial Assets and Extinguishments of Liabilities

A. Transfers of Receivables Reported as Sales

Not applicable.

B. Transfer and Servicing of Financial Assets

(1) The Company participates in a securities lending program whereby marketable securities in its investment portfolio are transferred to independent brokers or dealers. At September 30, 2021 the fair value of securities loaned was \$19,963,443 and the carrying value of securities loaned was \$19,094,672.

(2) - (7) Not applicable.

C. Wash Sales

(1) In the course of the Company's asset management, securities may be sold and reacquired within 30 days of the sale date to enhance the yield on the investments.

(2) At September 30, 2021, there were no wash sales involving securities with an NAIC designation of 3 or below or unrated.

18. Gain or Loss to the Reporting Entity from Uninsured Plans and the Uninsured Portion of Partially Insured Plans

A. Administrative Services Only Plans

Not applicable.

B. Administrative Services Contract Plans

Not applicable.

STATEMENT AS OF September 30, 2021 OF THE Empire HealthChoice HMO, Inc.
NOTES TO FINANCIAL STATEMENTS

C. Medicare or Other Similarly Structured Cost-Based Reimbursement Contract

No significant change.

19. Direct Premium Written/Produced by Managing General Agents/Third Party Administrators

Not applicable.

20. Fair Value Measurements

A.

(1) Fair Value Measurement at Reporting Date

Description for each class of asset or liability	(Level 1)	(Level 2)	(Level 3)	Net Asset Value (NAV)	Total
a. Assets at fair value					
Bonds					
U.S. special revenues	\$ —	\$ 97,221	\$ —	\$ —	\$ 97,221
Industrial and misc	—	\$ 1,213,394	—	—	\$ 1,213,394
Total bonds	\$ —	\$ 1,310,615	\$ —	\$ —	\$ 1,310,615
Total assets at fair value/NAV	\$ —	\$ 1,310,615	\$ —	\$ —	\$ 1,310,615

(2) Fair Value Measurement in (Level 3) of the Fair Value Hierarchy

There are no investments in Level 3 as of September 30, 2021.

(3) The Company's policy is to recognize transfers between Levels, if any, as of the beginning of the reporting period.

(4) Fair values of bonds are based on quoted market prices, where available. These fair values are obtained primarily from third party pricing services, which generally use Level 1 or Level 2 inputs, for the determination of fair value to facilitate fair value measurements and disclosures. Level 2 securities primarily include United States government securities, corporate securities, securities from states, municipalities and political subdivisions, mortgage-backed securities and certain other asset-backed securities. For securities not actively traded, the pricing services may use quoted market prices of comparable instruments or discounted cash flow analyses, incorporating inputs that are currently observable in the markets for similar securities. Inputs that are often used in the valuation methodologies include, but are not limited to, broker quotes, benchmark yields, credit spreads, default rates and prepayment speeds. The Company has controls in place to review the pricing services' qualifications and procedures used to determine fair values. In addition, the Company periodically reviews the pricing services' pricing methodologies, data sources and pricing inputs to ensure the fair values obtained are reasonable.

Certain bonds, primarily corporate debt securities, are designated Level 3. For these securities, the valuation methodologies may incorporate broker quotes or discounted cash flow analyses using assumptions for inputs such as expected cash flows, benchmark yields, credit spreads, default rates and prepayment speeds that are not observable in the markets.

There have been no significant changes in the valuation techniques during the current period.

STATEMENT AS OF September 30, 2021 OF THE Empire HealthChoice HMO, Inc.
NOTES TO FINANCIAL STATEMENTS

B. Fair Value Measurements Under Other Accounting Pronouncements

Not applicable.

C. Financial Instruments

Type of Financial Instrument	Aggregate Fair Value	Admitted Assets	(Level 1)	(Level 2)	(Level 3)	Net Asset Value ("NAV")	Not Practicable (Carrying Value)
Bonds	\$ 332,879,285	\$ 319,400,328	\$ —	\$ 332,879,285	\$ —	\$ —	\$ —
Securities lending collateral asset	20,403,390	20,402,080	—	20,403,390	—	—	—

D. Not Practicable to Estimate Fair Value

There are no financial instruments that were not practicable to estimate at fair value.

E. Investments Measured at Net Asset Value

The Company has no investments measured at net asset value.

21. Other Items

No significant change.

22. Events Subsequent

Subsequent events have been considered through November 10, 2021 for the statutory statement issued on November 11, 2021. There were no events occurring subsequent to September 30, 2021 requiring recognition or disclosure.

23. Reinsurance

No significant change.

24. Retrospectively Rated Contracts & Contracts Subject to Redetermination

A. - D.

No significant change.

STATEMENT AS OF September 30, 2021 OF THE Empire HealthChoice HMO, Inc.
NOTES TO FINANCIAL STATEMENTS

E. Risk Sharing Provisions of the Affordable Care Act ("ACA")

(1) Did the reporting entity write accident and health insurance premium that is subject to the Affordable Care Act risk sharing provisions (YES/NO)?	<u>Yes</u>
(2) Impact of Risk-Sharing Provisions of the Affordable Care Act on Admitted Assets, Liabilities and Revenue for the Current Year	
a. Permanent ACA Risk Adjustment Program Assets	
Assets	
1. Premium adjustments receivable due to ACA Risk Adjustment (including high risk pool payments)	<u>\$ 290,004</u>
Liabilities	
2. Risk adjustment user fees payable for ACA Risk Adjustment	<u>\$ 9</u>
3. Premium adjustments payable due to ACA Risk Adjustment (including high risk pool premiums)	<u>\$ —</u>
Operations (Revenue & Expense)	
4. Reported as revenue in premium for accident and health contracts (written/collected) due to ACA Risk Adjustment	<u>\$ 259,952</u>
5. Reported in expenses as ACA risk adjustment user fees (incurred/paid)	<u>\$ (17)</u>
b. Transitional ACA Reinsurance Program	
Assets	
1. Amounts recoverable for claims paid due to ACA Reinsurance	<u>\$ —</u>
2. Amounts recoverable for claims unpaid due to ACA Reinsurance (contra liability)	<u>\$ —</u>
3. Amounts receivable relating to uninsured plans for contributions for ACA Reinsurance	<u>\$ —</u>
Liabilities	
4. Liabilities for contributions payable due to ACA Reinsurance - not reported as ceded premium	<u>\$ —</u>
5. Ceded reinsurance premiums payable due to ACA Reinsurance	<u>\$ —</u>
6. Liability for amounts held under uninsured plans contributions for ACA Reinsurance	<u>\$ —</u>
Operations (Revenue & Expense)	
7. Ceded reinsurance premiums due to ACA Reinsurance	<u>\$ —</u>
8. Reinsurance recoveries (income statement) due to ACA Reinsurance payments or expected payments	<u>\$ —</u>
9. ACA Reinsurance contributions - not reported as ceded premium	<u>\$ —</u>
c. Temporary ACA Risk Corridors Program	
Assets	
1. Accrued retrospective premium due to ACA Risk Corridors	<u>\$ —</u>
Liabilities	
2. Reserve for rate credits or policy experience rating refunds due to ACA Risk Corridors	<u>\$ —</u>
Operations (Revenue & Expense)	
3. Effect of ACA Risk Corridors on net premium income (paid/received)	<u>\$ —</u>
4. Effect of ACA Risk Corridors on change in reserves for rate credits	<u>\$ —</u>

Line items where the amount is zero is due to no balance and/or no activity as of the reporting date.

STATEMENT AS OF September 30, 2021 OF THE Empire HealthChoice HMO, Inc.
NOTES TO FINANCIAL STATEMENTS

(3) Roll-forward of prior year ACA risk-sharing provisions for the following asset (gross of any nonadmission) and liability balances, along with the reasons for adjustments to prior year balance.

	Accrued During the Prior Year on Business Written Before December 31 of the Prior Year		Received or Paid as of the Current Year on Business Written Before December 31 of the Prior Year		Differences		Adjustments		Unsettled Balances as of the Reporting Date		
	1	2	3	4	5	6	7	8	9	10	
	Receivable	(Payable)	Receivable	(Payable)	Receivable	(Payable)	Receivable	(Payable)	Ref	Receivable	(Payable)
a. Permanent ACA Risk Adjustment Program											
1. Premium adjustments receivable (including high risk pool payments)	\$ 1,357,284	\$ —	\$ 391,552	\$ —	\$ 965,732	\$ —	\$ (680,839)	\$ —	A	\$ 284,893	\$ —
2. Premium adjustments (payable) (including high risk pool premiums)	\$ —	\$ 848,309	\$ —	\$ 549,857	\$ —	\$ 298,452	\$ —	\$ (298,452)	B	\$ —	\$ —
3. Subtotal ACA Permanent Risk Adjustment Program	\$ 1,357,284	\$ 848,309	\$ 391,552	\$ 549,857	\$ 965,732	\$ 298,452	\$ (680,839)	\$ (298,452)		\$ 284,893	\$ —
b. Transitional ACA Reinsurance Program											
1. Amounts recoverable for claims paid	\$ —	\$ —	\$ —	\$ —	\$ —	\$ —	\$ —	\$ —	C	\$ —	\$ —
2. Amounts recoverable for claims unpaid (contra liability)	\$ —	\$ —	\$ —	\$ —	\$ —	\$ —	\$ —	\$ —	D	\$ —	\$ —
3. Amounts receivable relating to uninsured plans	\$ —	\$ —	\$ —	\$ —	\$ —	\$ —	\$ —	\$ —	E	\$ —	\$ —
4. Liabilities for contributions payable due to ACA Reinsurance - not reported as ceded premium	\$ —	\$ —	\$ —	\$ —	\$ —	\$ —	\$ —	\$ —	F	\$ —	\$ —
5. Ceded reinsurance premiums payable	\$ —	\$ —	\$ —	\$ —	\$ —	\$ —	\$ —	\$ —	G	\$ —	\$ —
6. Liability for amounts held under uninsured plans	\$ —	\$ —	\$ —	\$ —	\$ —	\$ —	\$ —	\$ —	H	\$ —	\$ —
7. Subtotal ACA Transitional Reinsurance Program	\$ —	\$ —	\$ —	\$ —	\$ —	\$ —	\$ —	\$ —		\$ —	\$ —
c. Temporary ACA Risk Corridors Program											
1. Accrued retrospective premium	\$ —	\$ —	\$ —	\$ —	\$ —	\$ —	\$ —	\$ —	I	\$ —	\$ —
2. Reserve for rate credits or policy experience rating refunds	\$ —	\$ —	\$ —	\$ —	\$ —	\$ —	\$ —	\$ —	J	\$ —	\$ —
3. Subtotal ACA Risk Corridors Program	\$ —	\$ —	\$ —	\$ —	\$ —	\$ —	\$ —	\$ —		\$ —	\$ —
d. Total for ACA Risk Sharing Provisions	\$ 1,357,284	\$ 848,309	\$ 391,552	\$ 549,857	\$ 965,732	\$ 298,452	\$ (680,839)	\$ (298,452)		\$ 284,893	\$ —

Explanations of adjustments

- A Adjustments were made to reflect the ending balance in the Centers for Medicare & Medicaid Services "Summary Report on Permanent Risk Adjustment Transfers for the 2019 Benefit Year."
- B Adjustments were made to reflect the ending balance in the Centers for Medicare & Medicaid Services "Summary Report on Permanent Risk Adjustment Transfers for the 2019 Benefit Year."
- C Not applicable.
- D Not applicable.
- E Not applicable.
- F Not applicable.
- G Not applicable.
- H Not applicable.
- I Not applicable.
- J Not applicable.

STATEMENT AS OF September 30, 2021 OF THE Empire HealthChoice HMO, Inc.
NOTES TO FINANCIAL STATEMENTS

(4) Roll-Forward of Risk Corridors Asset and Liability Balances by Program Benefit Year.

Risk Corridors Program Year	Accrued During the Prior Year on Business Written Before December 31 of the Prior Year		Received or Paid as of the Current Year on Business Written Before December 31 of the Prior Year		Differences		Adjustments		Ref	Unsettled Balances as of the Reporting Date	
					Prior Year Accrued Less Payments (Col 1 - 3)	Prior Year Accrued Less Payments (Col 2 - 4)	To Prior Year Balances	To Prior Year Balances		Cumulative Balance from Prior Years (Col 1 - 3 + 7)	Cumulative Balance from Prior Years (Col 2 - 4 + 8)
	1	2	3	4	5	6	7	8		9	10
	Receivable	(Payable)	Receivable	(Payable)	Receivable	(Payable)	Receivable	(Payable)		Receivable	(Payable)
a. 2014											
1. Accrued retrospective premium	\$ —	\$ —	\$ —	\$ —	\$ —	\$ —	\$ —	\$ —	A	\$ —	\$ —
2. Reserve for rate credits for policy experience rating refunds	\$ —	\$ —	\$ —	\$ —	\$ —	\$ —	\$ —	\$ —	B	\$ —	\$ —
b. 2015											
1. Accrued retrospective premium	\$ —	\$ —	\$ —	\$ —	\$ —	\$ —	\$ —	\$ —	C	\$ —	\$ —
2. Reserve for rate credits for policy experience rating refunds	\$ —	\$ —	\$ —	\$ —	\$ —	\$ —	\$ —	\$ —	D	\$ —	\$ —
c. 2016											
1. Accrued retrospective premium	\$ —	\$ —	\$ —	\$ —	\$ —	\$ —	\$ —	\$ —	E	\$ —	\$ —
2. Reserve for rate credits for policy experience rating refunds	\$ —	\$ —	\$ —	\$ —	\$ —	\$ —	\$ —	\$ —	F	\$ —	\$ —
d. Total for Risk Corridors	\$ —	\$ —	\$ —	\$ —	\$ —	\$ —	\$ —	\$ —		\$ —	\$ —

Explanations of adjustments

- A Not applicable.
- B Not applicable.
- C Not applicable.
- D Not applicable.
- E Not applicable.
- F Not applicable.

24E(4)d (Columns 1 through 10) should equal 24E(3)e3 (Column 1 through 10 respectively)

(5) ACA Risk Corridors Receivable as of Reporting Date.

Risk Corridors Program Year	1 Estimated Amount to be Filed or Final Amount Filed with CMS	2 Non-Accrued Amounts for Impairment or Other Reasons	3 Amounts received from CMS	4 Asset Balance (Gross of Non-admissions) (1 - 2 - 3)	5 Non-admitted Amount	6 Net Admitted Asset (4 - 5)
a. 2014	\$ —	\$ —	\$ —	\$ —	\$ —	\$ —
b. 2015	\$ —	\$ —	\$ —	\$ —	\$ —	\$ —
c. 2016	\$ 8,305,585	\$ 41,465	\$ 8,264,120	\$ —	\$ —	\$ —
d. Total (a + b + c)	\$ 8,305,585	\$ 41,465	\$ 8,264,120	\$ —	\$ —	\$ —

24E(5)d (Columns 4) should equal 24E(3)c1 (Column 9)

24E(5)d (Columns 6) should equal 24E(2)c1

25. Change in Incurred Claims and Claim Adjustment Expenses

- A.** The estimated cost of claims and claim adjustment expense attributable to insured events of prior years decreased by \$15,487,053 during 2021. This is approximately 10.5% of unpaid claims and claim adjustment expenses of \$146,801,582 as of December 31, 2020. The redundancy reflects the decreases in estimated claims and claims adjustment expenses as a result of claims payment during the year, and as additional information is received regarding claims incurred prior to 2021. Recent claim development trends are also taken into account in evaluating the overall adequacy of unpaid claims and unpaid claim adjustment expense.
- B.** There were no significant changes in methodologies and assumptions used in calculating the liability for unpaid losses and loss adjustment expenses.

STATEMENT AS OF September 30, 2021 OF THE Empire HealthChoice HMO, Inc.
NOTES TO FINANCIAL STATEMENTS

26. Intercompany Pooling Arrangements

Not applicable.

27. Structured Settlements

Not applicable.

28. Health Care Receivables

No significant change.

29. Participating Policies

Not applicable.

30. Premium Deficiency Reserves

1. Liability carried for premium deficiency reserves	\$	<u>25,675,664</u>
2. Date of the most recent evaluation of this liability		<u>September 30, 2021</u>
3. Was anticipated investment income utilized in the calculation?	Yes	No <u>X</u>

31. Anticipated Salvage and Subrogation

No significant change.

GENERAL INTERROGATORIES

PART 1 - COMMON INTERROGATORIES

GENERAL

- 1.1 Did the reporting entity experience any material transactions requiring the filing of Disclosure of Material Transactions with the State of Domicile, as required by the Model Act? Yes [] No [X]
- 1.2 If yes, has the report been filed with the domiciliary state? Yes [] No []
- 2.1 Has any change been made during the year of this statement in the charter, by-laws, articles of incorporation, or deed of settlement of the reporting entity? Yes [] No [X]
- 2.2 If yes, date of change:
- 3.1 Is the reporting entity a member of an Insurance Holding Company System consisting of two or more affiliated persons, one or more of which is an insurer? Yes [X] No []
If yes, complete Schedule Y, Parts 1 and 1A.
- 3.2 Have there been any substantial changes in the organizational chart since the prior quarter end? Yes [] No [X]
- 3.3 If the response to 3.2 is yes, provide a brief description of those changes.
N/A
- 3.4 Is the reporting entity publicly traded or a member of a publicly traded group? Yes [X] No []
- 3.5 If the response to 3.4 is yes, provide the CIK (Central Index Key) code issued by the SEC for the entity/group. 0001156039
- 4.1 Has the reporting entity been a party to a merger or consolidation during the period covered by this statement? Yes [] No [X]
If yes, complete and file the merger history data file with the NAIC.
- 4.2 If yes, provide the name of the entity, NAIC Company Code, and state of domicile (use two letter state abbreviation) for any entity that has ceased to exist as a result of the merger or consolidation.

1 Name of Entity	2 NAIC Company Code	3 State of Domicile

5. If the reporting entity is subject to a management agreement, including third-party administrator(s), managing general agent(s), attorney-in-fact, or similar agreement, have there been any significant changes regarding the terms of the agreement or principals involved? Yes [] No [X] N/A []
If yes, attach an explanation.
- 6.1 State as of what date the latest financial examination of the reporting entity was made or is being made. 12/31/2019
- 6.2 State the as of date that the latest financial examination report became available from either the state of domicile or the reporting entity. This date should be the date of the examined balance sheet and not the date the report was completed or released. 12/31/2019
- 6.3 State as of what date the latest financial examination report became available to other states or the public from either the state of domicile or the reporting entity. This is the release date or completion date of the examination report and not the date of the examination (balance sheet date). 10/01/2021
- 6.4 By what department or departments?
New York State Department of Financial Services
- 6.5 Have all financial statement adjustments within the latest financial examination report been accounted for in a subsequent financial statement filed with Departments? Yes [] No [] N/A [X]
- 6.6 Have all of the recommendations within the latest financial examination report been complied with? Yes [X] No [] N/A []
- 7.1 Has this reporting entity had any Certificates of Authority, licenses or registrations (including corporate registration, if applicable) suspended or revoked by any governmental entity during the reporting period? Yes [] No [X]
- 7.2 If yes, give full information:
- 8.1 Is the company a subsidiary of a bank holding company regulated by the Federal Reserve Board? Yes [] No [X]
- 8.2 If response to 8.1 is yes, please identify the name of the bank holding company.
- 8.3 Is the company affiliated with one or more banks, thrifts or securities firms? Yes [] No [X]
- 8.4 If response to 8.3 is yes, please provide below the names and location (city and state of the main office) of any affiliates regulated by a federal regulatory services agency [i.e. the Federal Reserve Board (FRB), the Office of the Comptroller of the Currency (OCC), the Federal Deposit Insurance Corporation (FDIC) and the Securities Exchange Commission (SEC)] and identify the affiliate's primary federal regulator.

1 Affiliate Name	2 Location (City, State)	3 FRB	4 OCC	5 FDIC	6 SEC

GENERAL INTERROGATORIES

- 9.1 Are the senior officers (principal executive officer, principal financial officer, principal accounting officer or controller, or persons performing similar functions) of the reporting entity subject to a code of ethics, which includes the following standards? Yes No
 (a) Honest and ethical conduct, including the ethical handling of actual or apparent conflicts of interest between personal and professional relationships;
 (b) Full, fair, accurate, timely and understandable disclosure in the periodic reports required to be filed by the reporting entity;
 (c) Compliance with applicable governmental laws, rules and regulations;
 (d) The prompt internal reporting of violations to an appropriate person or persons identified in the code; and
 (e) Accountability for adherence to the code.
- 9.11 If the response to 9.1 is No, please explain:
- 9.2 Has the code of ethics for senior managers been amended? Yes No
- 9.21 If the response to 9.2 is Yes, provide information related to amendment(s).
- 9.3 Have any provisions of the code of ethics been waived for any of the specified officers? Yes No
- 9.31 If the response to 9.3 is Yes, provide the nature of any waiver(s).

FINANCIAL

- 10.1 Does the reporting entity report any amounts due from parent, subsidiaries or affiliates on Page 2 of this statement? Yes No
- 10.2 If yes, indicate any amounts receivable from parent included in the Page 2 amount: \$0

INVESTMENT

- 11.1 Were any of the stocks, bonds, or other assets of the reporting entity loaned, placed under option agreement, or otherwise made available for use by another person? (Exclude securities under securities lending agreements.) Yes No
- 11.2 If yes, give full and complete information relating thereto:
12. Amount of real estate and mortgages held in other invested assets in Schedule BA: \$0
13. Amount of real estate and mortgages held in short-term investments: \$0
- 14.1 Does the reporting entity have any investments in parent, subsidiaries and affiliates? Yes No
- 14.2 If yes, please complete the following:
- | | 1
Prior Year-End
Book/Adjusted
Carrying Value | 2
Current Quarter
Book/Adjusted
Carrying Value |
|---|--|---|
| 14.21 Bonds | \$0 | \$0 |
| 14.22 Preferred Stock | \$0 | \$0 |
| 14.23 Common Stock | \$0 | \$0 |
| 14.24 Short-Term Investments | \$0 | \$0 |
| 14.25 Mortgage Loans on Real Estate | \$0 | \$0 |
| 14.26 All Other | \$0 | \$0 |
| 14.27 Total Investment in Parent, Subsidiaries and Affiliates (Subtotal Lines 14.21 to 14.26) | \$0 | \$0 |
| 14.28 Total Investment in Parent included in Lines 14.21 to 14.26 above | \$ | \$ |
- 15.1 Has the reporting entity entered into any hedging transactions reported on Schedule DB? Yes No
- 15.2 If yes, has a comprehensive description of the hedging program been made available to the domiciliary state? Yes No N/A
 If no, attach a description with this statement.
16. For the reporting entity's security lending program, state the amount of the following as of the current statement date:
- 16.1 Total fair value of reinvested collateral assets reported on Schedule DL, Parts 1 and 2 \$20,403,390
- 16.2 Total book adjusted/carrying value of reinvested collateral assets reported on Schedule DL, Parts 1 and 2 \$20,402,080
- 16.3 Total payable for securities lending reported on the liability page. \$20,402,080

GENERAL INTERROGATORIES

17. Excluding items in Schedule E - Part 3 - Special Deposits, real estate, mortgage loans and investments held physically in the reporting entity's offices, vaults or safety deposit boxes, were all stocks, bonds and other securities, owned throughout the current year held pursuant to a custodial agreement with a qualified bank or trust company in accordance with Section 1, III - General Examination Considerations, F. Outsourcing of Critical Functions, Custodial or Safekeeping Agreements of the NAIC Financial Condition Examiners Handbook? Yes [X] No []
- 17.1 For all agreements that comply with the requirements of the NAIC Financial Condition Examiners Handbook, complete the following:

1 Name of Custodian(s)	2 Custodian Address
JP Morgan Chase Bank, N.A	383 Madison Ave, New York, NY 10179

- 17.2 For all agreements that do not comply with the requirements of the NAIC Financial Condition Examiners Handbook, provide the name, location and a complete explanation:

1 Name(s)	2 Location(s)	3 Complete Explanation(s)

- 17.3 Have there been any changes, including name changes, in the custodian(s) identified in 17.1 during the current quarter? Yes [] No [X]

- 17.4 If yes, give full information relating thereto:

1 Old Custodian	2 New Custodian	3 Date of Change	4 Reason

- 17.5 Investment management – Identify all investment advisors, investment managers, broker/dealers, including individuals that have the authority to make investment decisions on behalf of the reporting entity. For assets that are managed internally by employees of the reporting entity, note as such. ["...that have access to the investment accounts"; "...handle securities"]

1 Name of Firm or Individual	2 Affiliation
Anthem, Inc.	I.....
Loomis, Sayles & Company, LP	U.....
MacKay Shields LLC	U.....

- 17.5097 For those firms/individuals listed in the table for Question 17.5, do any firms/individuals unaffiliated with the reporting entity (i.e. designated with a "U") manage more than 10% of the reporting entity's invested assets?..... Yes [X] No []

- 17.5098 For firms/individuals unaffiliated with the reporting entity (i.e. designated with a "U") listed in the table for Question 17.5, does the total assets under management aggregate to more than 50% of the reporting entity's invested assets?..... Yes [X] No []

- 17.6 For those firms or individuals listed in the table for 17.5 with an affiliation code of "A" (affiliated) or "U" (unaffiliated), provide the information for the table below.

1	2	3	4	5
Central Registration Depository Number	Name of Firm or Individual	Legal Entity Identifier (LEI)	Registered With	Investment Management Agreement (IMA) Filed
105377	Loomis, Sayles & Company, LP	J1ZPN2RX3UMNOYID1313	Securities Exchange Commission	NO.....
107717	MacKay Shields LLC	549300Y7LLC0FU7R8H16	Securities Exchange Commission	NO.....

- 18.1 Have all the filing requirements of the Purposes and Procedures Manual of the NAIC Investment Analysis Office been followed? Yes [X] No []

- 18.2 If no, list exceptions:

19. By self-designating 5GI securities, the reporting entity is certifying the following elements for each self-designated 5GI security:
- a. Documentation necessary to permit a full credit analysis of the security does not exist or an NAIC CRP credit rating for an FE or PL security is not available.
 - b. Issuer or obligor is current on all contracted interest and principal payments.
 - c. The insurer has an actual expectation of ultimate payment of all contracted interest and principal.
- Has the reporting entity self-designated 5GI securities? Yes [] No [X]

20. By self-designating PLGI securities, the reporting entity is certifying the following elements of each self-designated PLGI security:
- a. The security was purchased prior to January 1, 2018.
 - b. The reporting entity is holding capital commensurate with the NAIC Designation reported for the security.
 - c. The NAIC Designation was derived from the credit rating assigned by an NAIC CRP in its legal capacity as a NRSRO which is shown on a current private letter rating held by the insurer and available for examination by state insurance regulators.
 - d. The reporting entity is not permitted to share this credit rating of the PL security with the SVO.
- Has the reporting entity self-designated PLGI securities? Yes [] No [X]

21. By assigning FE to a Schedule BA non-registered private fund, the reporting entity is certifying the following elements of each self-designated FE fund:
- a. The shares were purchased prior to January 1, 2019.
 - b. The reporting entity is holding capital commensurate with the NAIC Designation reported for the security.
 - c. The security had a public credit rating(s) with annual surveillance assigned by an NAIC CRP in its legal capacity as an NRSRO prior to January 1, 2019.
 - d. The fund only or predominantly holds bonds in its portfolio.
 - e. The current reported NAIC Designation was derived from the public credit rating(s) with annual surveillance assigned by an NAIC CRP in its legal capacity as an NRSRO.
 - f. The public credit rating(s) with annual surveillance assigned by an NAIC CRP has not lapsed.
- Has the reporting entity assigned FE to Schedule BA non-registered private funds that complied with the above criteria? Yes [] No [X]

GENERAL INTERROGATORIES

PART 2 - HEALTH

1. Operating Percentages:
- 1.1 A&H loss percent102.2 %
 - 1.2 A&H cost containment percent4.2 %
 - 1.3 A&H expense percent excluding cost containment expenses8.0 %
- 2.1 Do you act as a custodian for health savings accounts? Yes [] No [X]
- 2.2 If yes, please provide the amount of custodial funds held as of the reporting date\$
- 2.3 Do you act as an administrator for health savings accounts? Yes [] No [X]
- 2.4 If yes, please provide the balance of the funds administered as of the reporting date\$
3. Is the reporting entity licensed or chartered, registered, qualified, eligible or writing business in at least two states? Yes [X] No []
- 3.1 If no, does the reporting entity assume reinsurance business that covers risks residing in at least one state other than the state of domicile of the reporting entity? Yes [] No []

SCHEDULE S - CEDED REINSURANCE

Showing All New Reinsurance Treaties - Current Year to Date

1 NAIC Company Code	2 ID Number	3 Effective Date	4 Name of Reinsurer	5 Domiciliary Jurisdiction	6 Type of Reinsurance Ceded	7 Type of Business Ceded	8 Type of Reinsurer	9 Certified Reinsurer Rating (1 through 6)	10 Effective Date of Certified Reinsurer Rating
NONE									

SCHEDULE T - PREMIUMS AND OTHER CONSIDERATIONS

Current Year to Date - Allocated by States and Territories

States, etc.	1 Active Status (a)	Direct Business Only									
		2 Accident and Health Premiums	3 Medicare Title XVIII	4 Medicaid Title XIX	5 CHIP Title XXI	6 Federal Employees Health Benefits Program Premiums	7 Life and Annuity Premiums & Other Considerations	8 Property/Casualty Premiums	9 Total Columns 2 Through 8	10 Deposit-Type Contracts	
1. Alabama	AL	N								0	
2. Alaska	AK	N								0	
3. Arizona	AZ	N								0	
4. Arkansas	AR	N								0	
5. California	CA	N								0	
6. Colorado	CO	N								0	
7. Connecticut	CT	N								0	
8. Delaware	DE	N								0	
9. District of Columbia	DC	N								0	
10. Florida	FL	N								0	
11. Georgia	GA	N								0	
12. Hawaii	HI	N								0	
13. Idaho	ID	N								0	
14. Illinois	IL	N								0	
15. Indiana	IN	N								0	
16. Iowa	IA	N								0	
17. Kansas	KS	N								0	
18. Kentucky	KY	N								0	
19. Louisiana	LA	N								0	
20. Maine	ME	L	(95,884)							(95,884)	
21. Maryland	MD	N								0	
22. Massachusetts	MA	N								0	
23. Michigan	MI	N								0	
24. Minnesota	MN	N								0	
25. Mississippi	MS	N								0	
26. Missouri	MO	N								0	
27. Montana	MT	N								0	
28. Nebraska	NE	N								0	
29. Nevada	NV	N								0	
30. New Hampshire	NH	N								0	
31. New Jersey	NJ	N								0	
32. New Mexico	NM	N								0	
33. New York	NY	L	14,600,477	562,347,562						576,948,039	
34. North Carolina	NC	N								0	
35. North Dakota	ND	N								0	
36. Ohio	OH	N								0	
37. Oklahoma	OK	N								0	
38. Oregon	OR	N								0	
39. Pennsylvania	PA	N								0	
40. Rhode Island	RI	N								0	
41. South Carolina	SC	N								0	
42. South Dakota	SD	N								0	
43. Tennessee	TN	N								0	
44. Texas	TX	N								0	
45. Utah	UT	N								0	
46. Vermont	VT	N								0	
47. Virginia	VA	N								0	
48. Washington	WA	N								0	
49. West Virginia	WV	N								0	
50. Wisconsin	WI	N								0	
51. Wyoming	WY	N								0	
52. American Samoa	AS	N								0	
53. Guam	GU	N								0	
54. Puerto Rico	PR	N								0	
55. U.S. Virgin Islands	VI	N								0	
56. Northern Mariana Islands	MP	N								0	
57. Canada	CAN	N								0	
58. Aggregate Other Aliens	OT	XXX	0	0	0	0	0	0	0	0	0
59. Subtotal	XXX	14,600,477	562,251,678	0	0	0	0	0	576,852,155	0	0
60. Reporting Entity Contributions for Employee Benefit Plans	XXX									0	
61. Totals (Direct Business)	XXX	14,600,477	562,251,678	0	0	0	0	0	576,852,155	0	0
DETAILS OF WRITE-INS											
58001.	XXX										
58002.	XXX										
58003.	XXX										
58998. Summary of remaining write-ins for Line 58 from overflow page	XXX	0	0	0	0	0	0	0	0	0	0
58999. Totals (Lines 58001 through 58003 plus 58998)(Line 58 above)	XXX	0	0	0	0	0	0	0	0	0	0

(a) Active Status Counts:

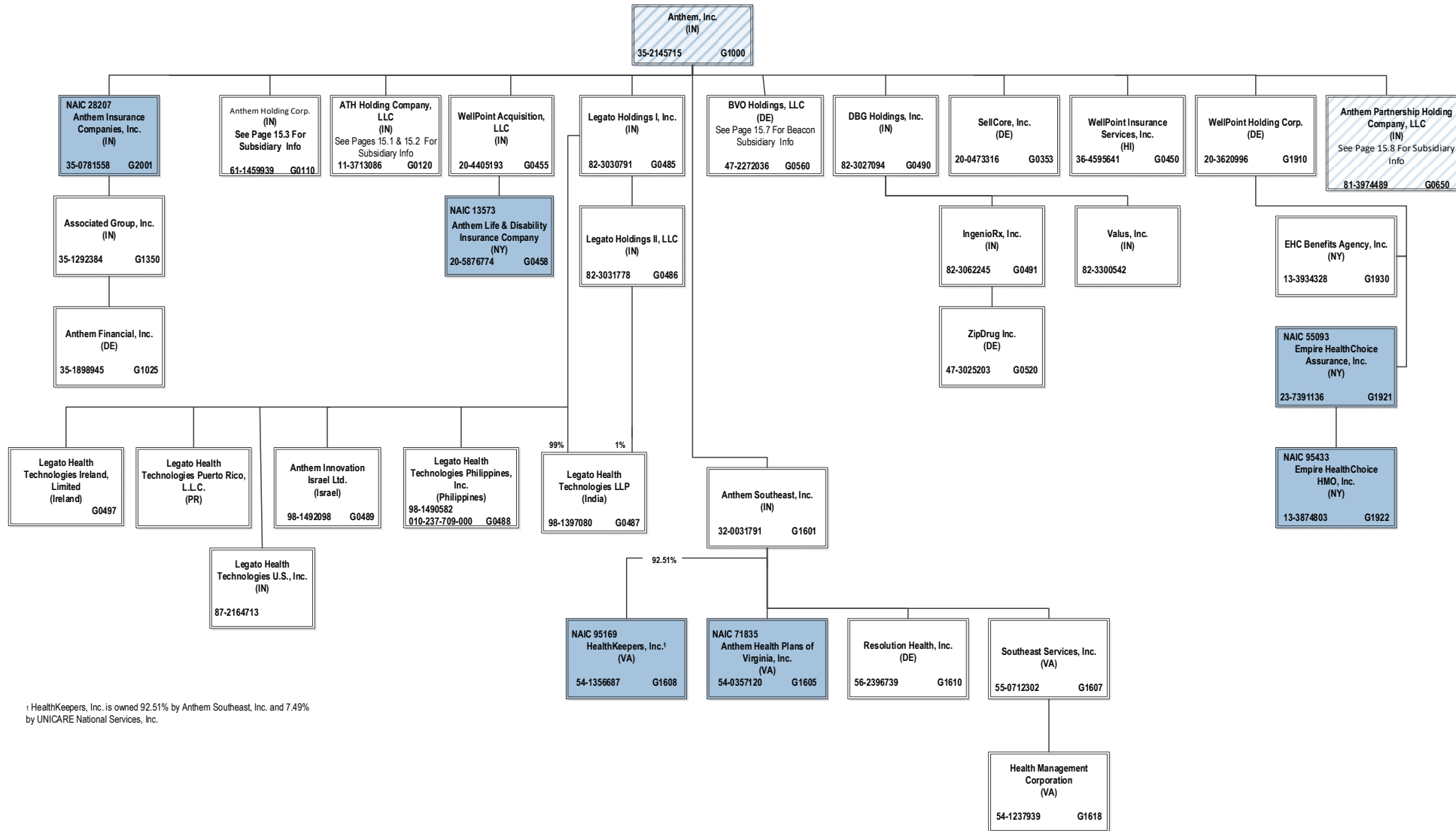
L - Licensed or Chartered - Licensed Insurance carrier or domiciled RRG..... 2 R - Registered - Non-domiciled RRGs..... 0
 E - Eligible - Reporting entities eligible or approved to write surplus lines in the state..... 0 Q - Qualified - Qualified or accredited reinsurer..... 0
 N - None of the above - Not allowed to write business in the state..... 55

SCHEDULE Y – INFORMATION CONCERNING ACTIVITIES OF INSURER MEMBERS OF A HOLDING COMPANY GROUP

PART 1 – ORGANIZATIONAL CHART

BCBSA Licensee
Regulated Insurance Company
Regulated BCBSA Licensee

ALL SUBSIDIARIES 100% OWNED AND LLC'S ARE CONTROLLED BY MEMBERS UNLESS OTHERWISE NOTED



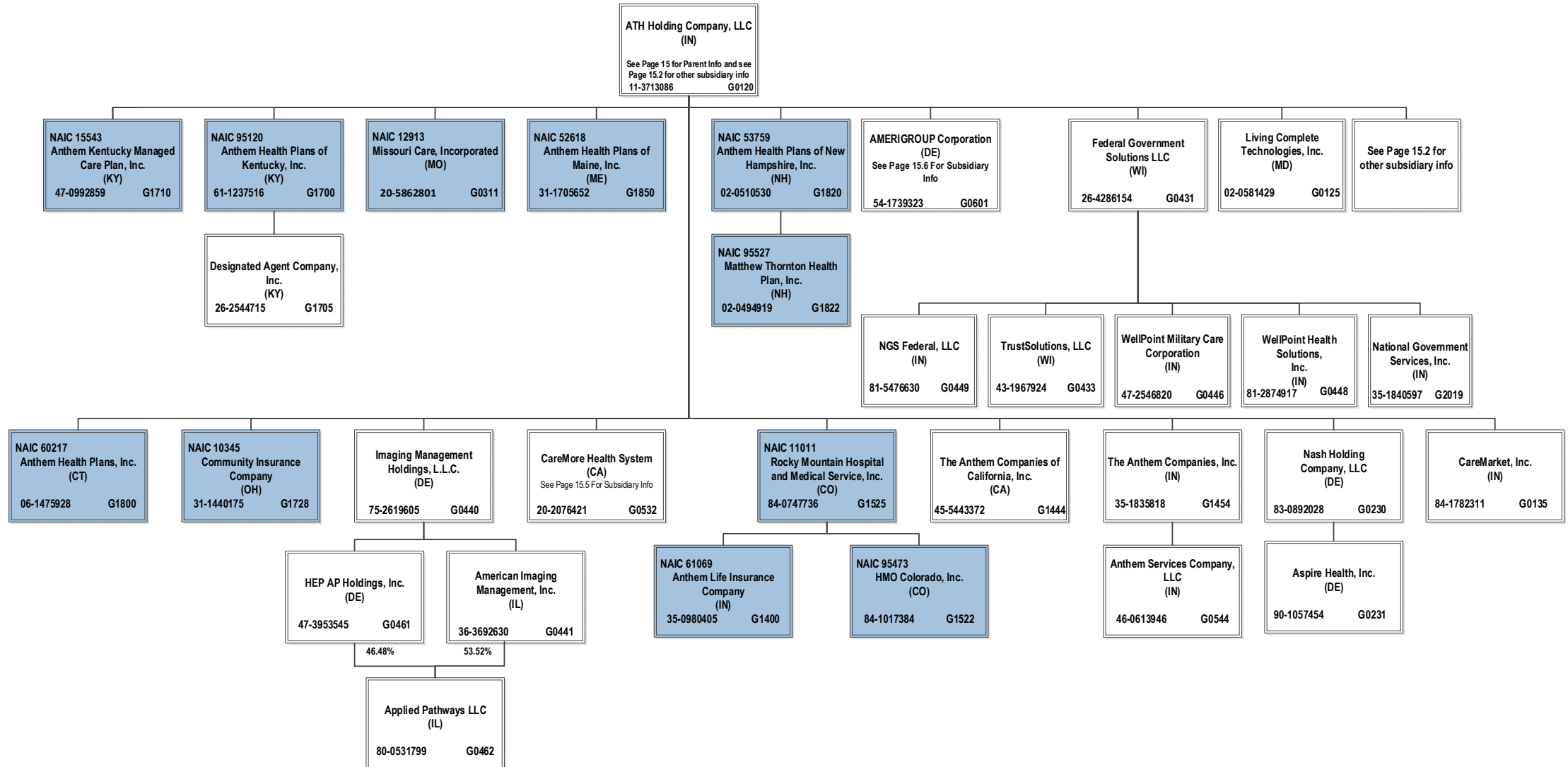
¹ HealthKeepers, Inc. is owned 92.51% by Anthem Southeast, Inc. and 7.49% by UNICARE National Services, Inc.

SCHEDULE Y – INFORMATION CONCERNING ACTIVITIES OF INSURER MEMBERS OF A HOLDING COMPANY GROUP

PART 1 – ORGANIZATIONAL CHART

ALL SUBSIDIARIES 100% OWNED AND LLC'S ARE CONTROLLED BY MEMBERS UNLESS OTHERWISE NOTED

BCBSA Licensee
Regulated Insurance Company
Regulated BCBSA Licensee

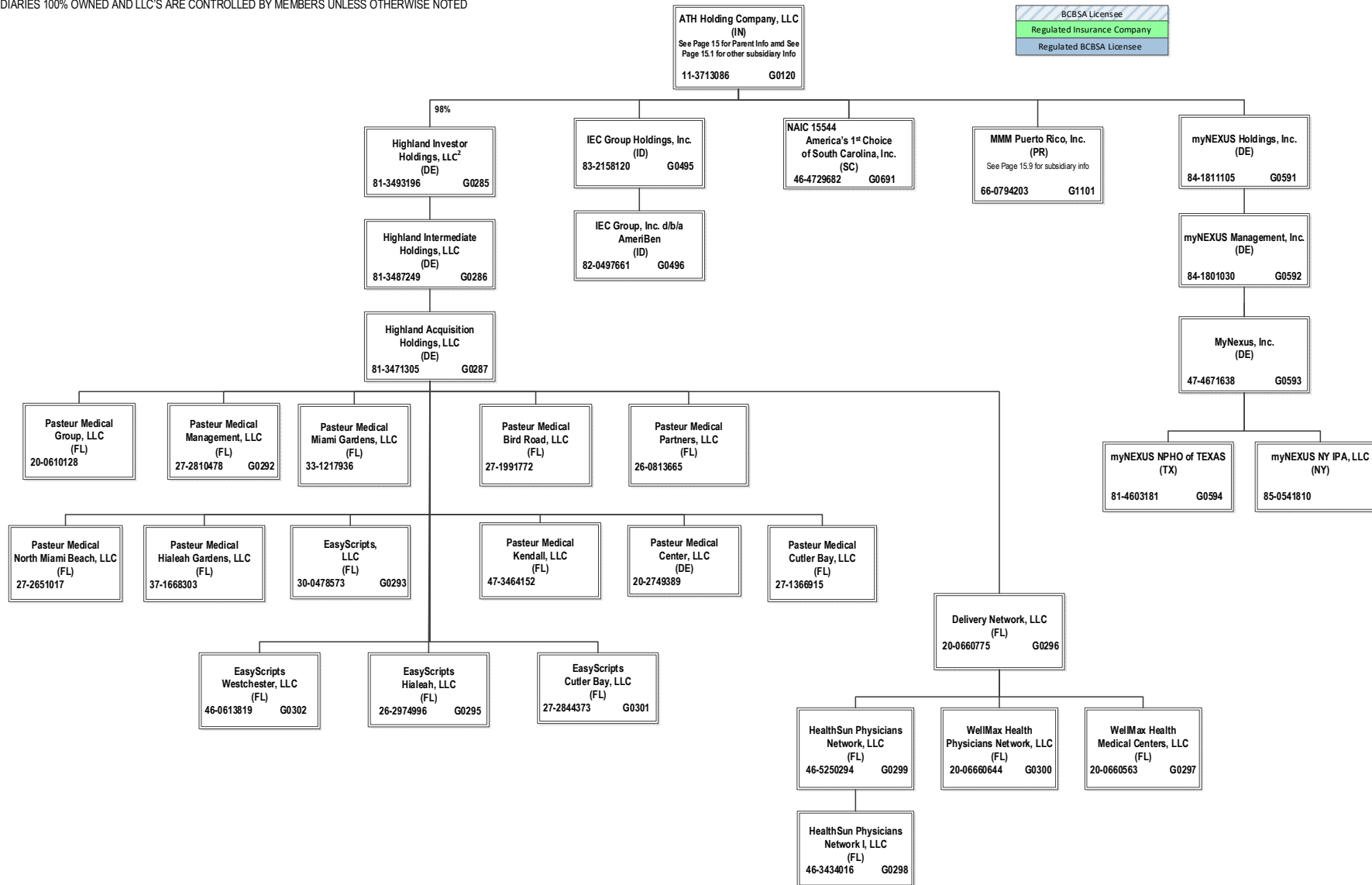


15.1

SCHEDULE Y – INFORMATION CONCERNING ACTIVITIES OF INSURER MEMBERS OF A HOLDING COMPANY GROUP

PART 1 – ORGANIZATIONAL CHART

ALL SUBSIDIARIES 100% OWNED AND LLC'S ARE CONTROLLED BY MEMBERS UNLESS OTHERWISE NOTED



² ATH Holding Company, LLC holds a 98% interest in Highland Investor Holdings, LLC, and Amerigroup Corporation holds the remaining 2% interest.

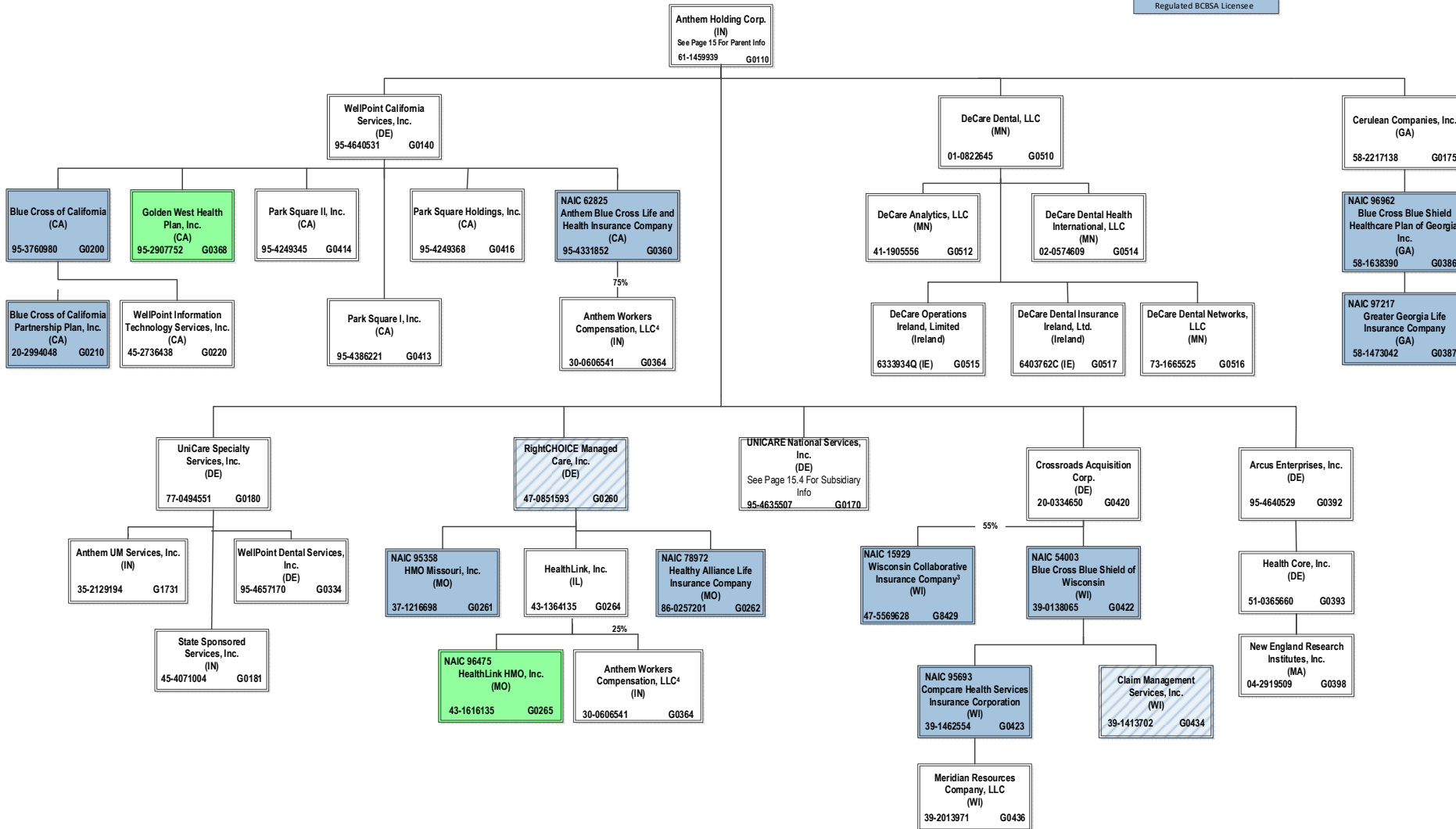
15.2

SCHEDULE Y – INFORMATION CONCERNING ACTIVITIES OF INSURER MEMBERS OF A HOLDING COMPANY GROUP

PART 1 – ORGANIZATIONAL CHART

ALL SUBSIDIARIES 100% OWNED AND LLC'S ARE CONTROLLED BY MEMBERS UNLESS OTHERWISE NOTED

BCBSA Licensee
Regulated Insurance Company
Regulated BCBSA Licensee



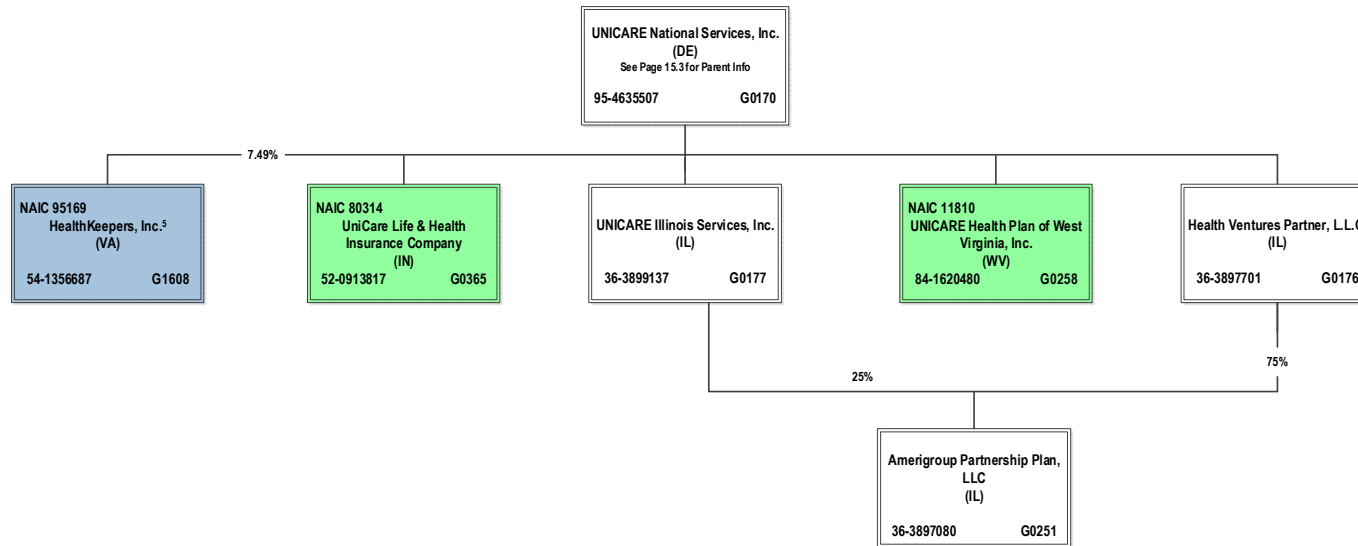
³ Wisconsin Collaborative Insurance Company is a joint venture 55% owned by Crossroads Acquisition Corp. and 45% owned by Aurora Health Care, Inc. (non-affiliate). Not consolidated for accounting purposes.

⁴ Anthem Workers' Compensation, LLC is owned 75% by Anthem Blue Cross Life and Health Insurance Company and 25% by HealthLink, Inc.

SCHEDULE Y – INFORMATION CONCERNING ACTIVITIES OF INSURER MEMBERS OF A HOLDING COMPANY GROUP
PART 1 – ORGANIZATIONAL CHART

ALL SUBSIDIARIES 100% OWNED AND LLC'S ARE CONTROLLED BY MEMBERS UNLESS OTHERWISE NOTED

BCBSA Licensee
Regulated Insurance Company
Regulated BCBSA Licensee



15.4

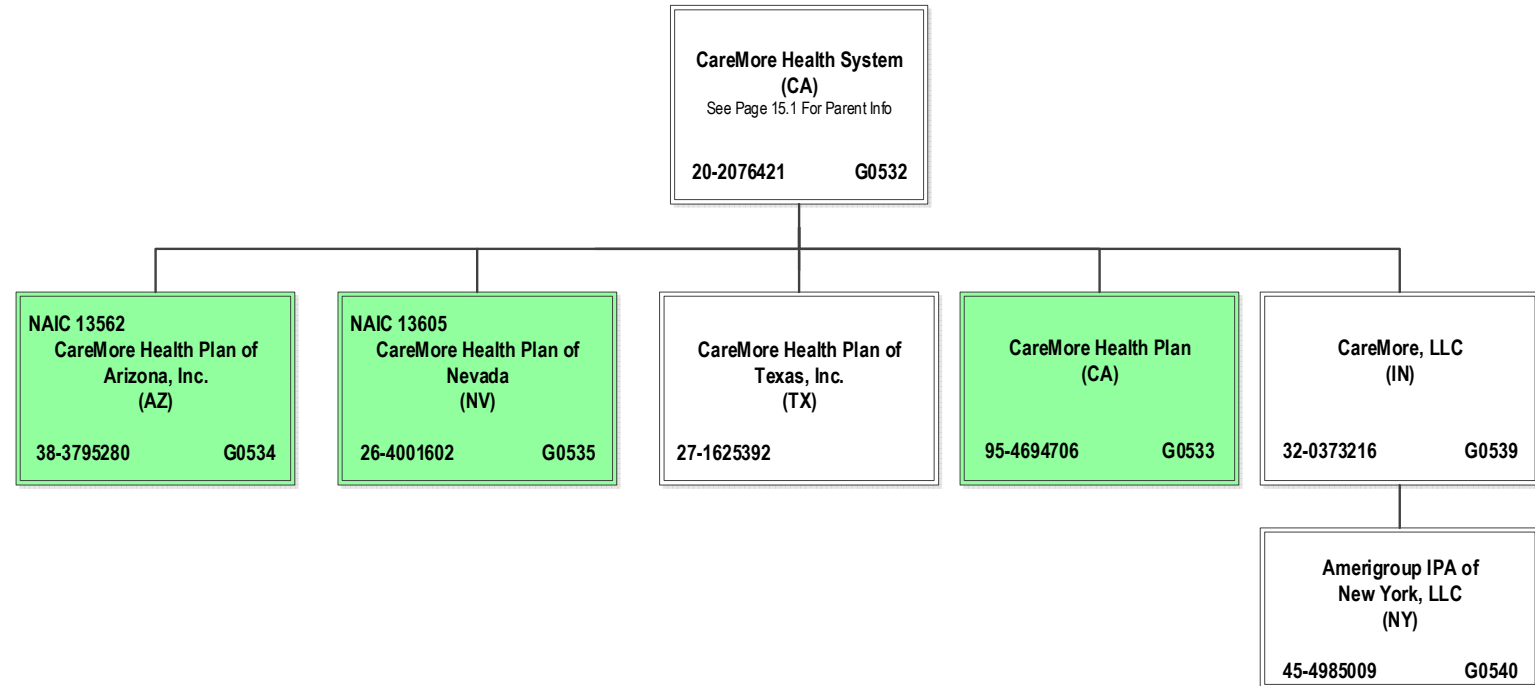
⁵ HealthKeepers, Inc. is owned 92.51% by Anthem Southeast, Inc. and 7.49% by UNICARE National Services, Inc.

SCHEDULE Y – INFORMATION CONCERNING ACTIVITIES OF INSURER MEMBERS OF A HOLDING COMPANY GROUP
PART 1 – ORGANIZATIONAL CHART

BCBSA Licensee
Regulated Insurance Company
Regulated BCBSA Licensee

ALL SUBSIDIARIES 100% OWNED AND LLC'S ARE CONTROLLED BY MEMBERS UNLESS OTHERWISE NOTED

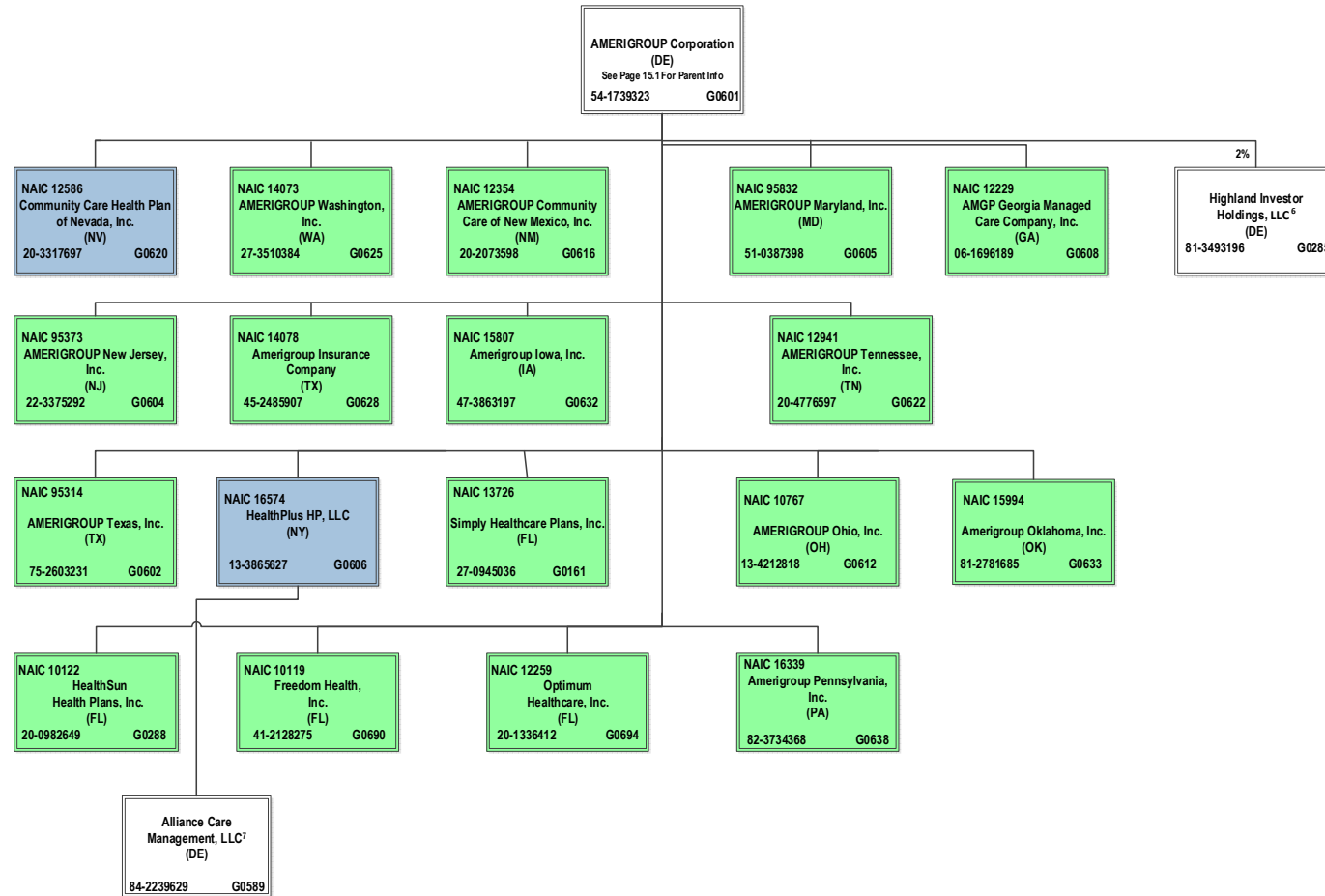
15.5



SCHEDULE Y – INFORMATION CONCERNING ACTIVITIES OF INSURER MEMBERS OF A HOLDING COMPANY GROUP

PART 1 – ORGANIZATIONAL CHART

ALL SUBSIDIARIES 100% OWNED AND LLC'S ARE CONTROLLED BY MEMBERS UNLESS OTHERWISE NOTED

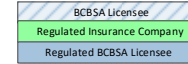


⁶ Amerigroup Corporation holds a 2% interest in Highland Investor Holdings, LLC, and ATH Holding Company, LLC holds the remaining 98% interest.

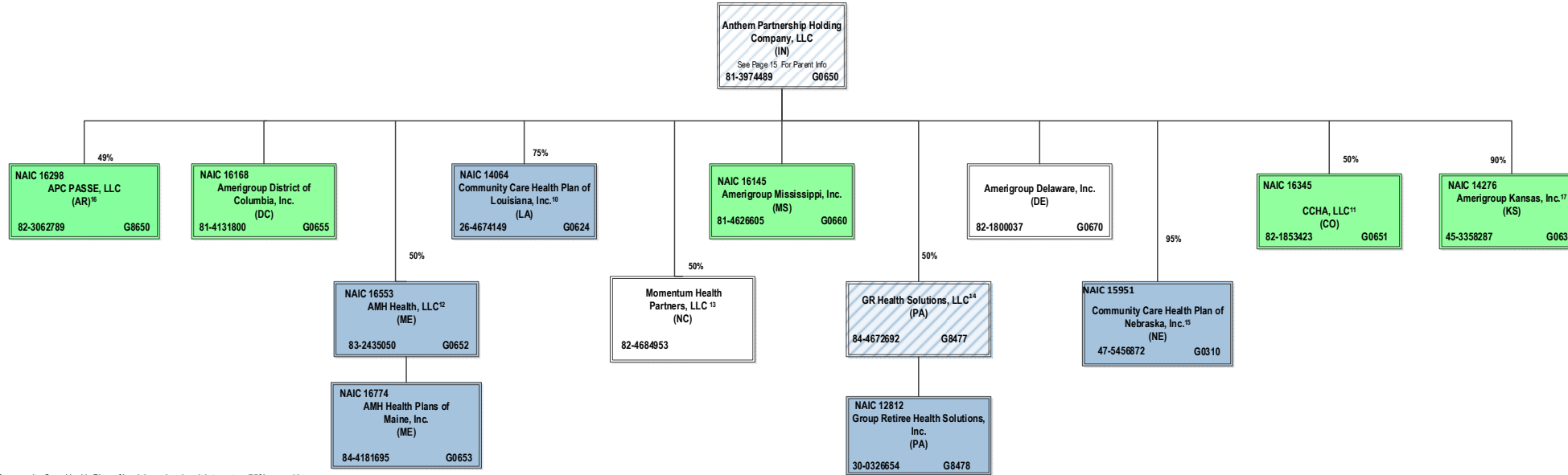
⁷ Alliance Care Management, LLC is 50% owned by Beacon Health Options, Inc. and 50% owned by HealthPlus HP, LLC.

SCHEDULE Y – INFORMATION CONCERNING ACTIVITIES OF INSURER MEMBERS OF A HOLDING COMPANY GROUP

PART 1 – ORGANIZATIONAL CHART



ALL SUBSIDIARIES 100% OWNED AND LLC'S ARE CONTROLLED BY MEMBERS UNLESS OTHERWISE NOTED



¹⁰ Community Care Health Plan of Louisiana, Inc. is a joint venture 75% owned by Anthem Partnership Holding Company, LLC and 25% owned by Louisiana Health Service & Indemnity Company d/b/a Blue Cross and Blue Shield of Louisiana (non-affiliate)

¹¹ CCHA, LLC is a joint venture 50% owned by Anthem Partnership Holding Company, LLC and 50% owned by Colorado Community Health Alliance, LLC (non-affiliate)

¹² AMH Health, LLC is a joint venture 50% owned by MaineHealth (non-affiliate) and 50% owned by Anthem Partnership Holding Company, LLC

¹³ Momentum Health Partners, LLC is a joint venture 50% owned by Anthem Partnership Holding Company, LLC and 50% owned by Blue Cross and Blue Shield of North Carolina (non-affiliate)

¹⁴ GR Health Solutions, LLC is a joint venture 50% owned by Anthem Partnership Holding Company, LLC and 50% owned by Independence Blue Cross, LLC (non-affiliate)

¹⁵ Community Care Health Plan of Nebraska, Inc. is a joint venture 95% owned by Anthem Partnership Holding Company, LLC and 5% owned by Blue Cross and Blue Shield of Nebraska, Inc. (non-affiliate)

¹⁶ APC PASSE, LLC (regulated entity) is a joint venture 49% owned by Anthem Partnership Holding Company, LLC and 51% owned by Arkansas Provider Coalition, LLC (non-affiliate)

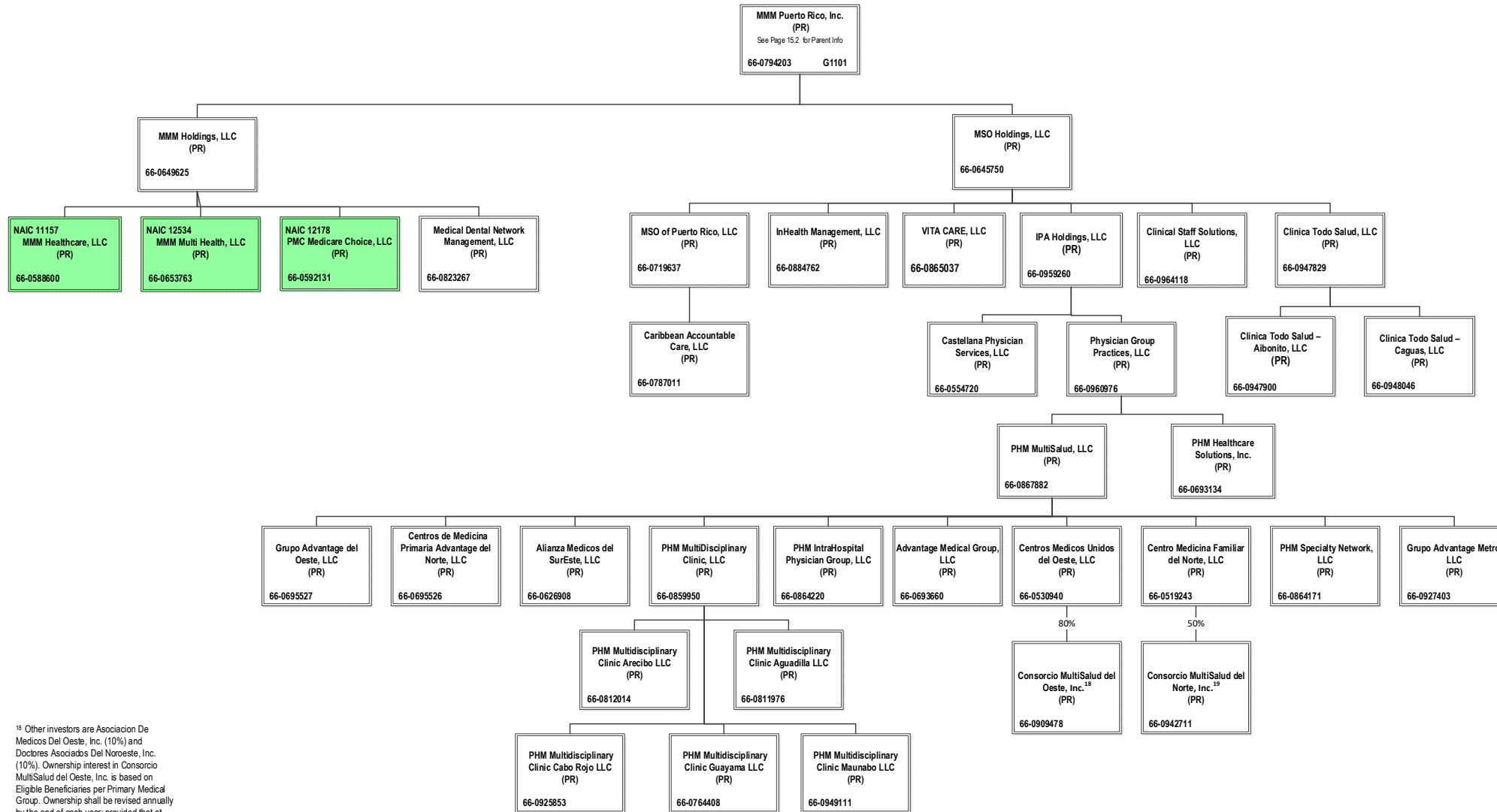
¹⁷ Amerigroup Kansas, Inc. (renamed Community Care Health Plan of Kansas, Inc. effective October 4, 2021) is a joint venture 90% owned by Anthem Partnership Holding Company, LLC, 5% owned by Blue Cross and Blue Shield of Kansas, Inc. (non-affiliate) and 5% owned by Blue Cross and Blue Shield of Kansas City (non-affiliate)

SCHEDULE Y – INFORMATION CONCERNING ACTIVITIES OF INSURER MEMBERS OF A HOLDING COMPANY GROUP

PART 1 – ORGANIZATIONAL CHART

ALL SUBSIDIARIES 100% OWNED AND LLC'S ARE CONTROLLED BY MEMBERS UNLESS OTHERWISE NOTED

BCBSA Licensee
Regulated Insurance Company
Regulated BCBSA Licensee



¹⁸ Other investors are Asociacion De Medicos Del Oeste, Inc. (10%) and Doctores Asociados Del Noroeste, Inc. (10%). Ownership interest in Consortio MultiSalud del Oeste, Inc. is based on Eligible Beneficiaries per Primary Medical Group. Ownership shall be revised annually by the end of each year; provided that at least 10% shall remain with each PMG.

¹⁹ Other 50% owned by ACO del Norte, LLC (non-affiliate)

STATEMENT AS OF SEPTEMBER 30, 2021 OF THE Empire HealthChoice HMO, Inc.

SCHEDULE Y
PART 1A - DETAIL OF INSURANCE HOLDING COMPANY SYSTEM

1	2	3	4	5	6	7	8	9	10	11	12	13	14	15	16
Group Code	Group Name	NAIC Company Code	ID Number	Federal RSSD	CIK	Name of Securities Exchange if Publicly Traded (U.S. or International)	Names of Parent, Subsidiaries Or Affiliates	Domiciliary Location	Relationship to Reporting Entity	Directly Controlled by (Name of Entity/Person)	Type of Control (Ownership, Board, Management, Attorney-in-Fact, Influence, Other)	If Control is Ownership Provide Percentage	Ultimate Controlling Entity(ies)/Person(s)	Is an SCA Filing Required? (Y/N)	*
.0671	Anthem, Inc.		66-0693660		0001156039		Advantage Medical Group, LLC	PR	NIA	PHM MultiSalud, LLC	Ownership	100.000	Anthem, Inc.	N	
.0671	Anthem, Inc.		66-0626908		0001156039		Alianza Medicos del SurEste, LLC	PR	NIA	PHM MultiSalud, LLC	Ownership	100.000	Anthem, Inc.	N	
.0671	Anthem, Inc.		84-2239629		0001156039		Alliance Care Management, LLC	DE	NIA	Beacon Health Options, Inc.	Ownership	50.000	Anthem, Inc.	N	
.0671	Anthem, Inc.		84-2239629		0001156039		Alliance Care Management, LLC	DE	NIA	HealthPlus HP, LLC	Ownership	50.000	Anthem, Inc.	N	
.0671	Anthem, Inc.		36-3692630		0001156039		American Imaging Management, Inc.	IL	NIA	Imaging Management Holdings, L.L.C.	Ownership	100.000	Anthem, Inc.	N	
.0671	Anthem, Inc.	15544	46-4729682		0001156039		America's 1st Choice of South Carolina, Inc.	SC	IA	ATH Holding Company, LLC	Ownership	100.000	Anthem, Inc.	N	
.0671	Anthem, Inc.	12354	20-2073598		0001156039		AMERIGROUP Community Care of New Mexico, Inc.	NM	IA	AMERIGROUP Corporation	Ownership	100.000	Anthem, Inc.	N	
.0671	Anthem, Inc.		54-1739323		0001156039		AMERIGROUP Corporation	DE	NIA	ATH Holding Company, LLC	Ownership	100.000	Anthem, Inc.	N	
.0671	Anthem, Inc.		82-1800037		0001156039		AMERIGROUP Delaware, Inc.	DE	NIA	Anthem Partnership Holding Company, LLC	Ownership	100.000	Anthem, Inc.	N	
.0671	Anthem, Inc.	16168	81-4131800		0001156039		Amerigroup District of Columbia, Inc.	DC	IA	Anthem Partnership Holding Company, LLC	Ownership	100.000	Anthem, Inc.	N	
.0671	Anthem, Inc.	14078	45-2485907		0001156039		Amerigroup Insurance Company	TX	IA	AMERIGROUP Corporation	Ownership	100.000	Anthem, Inc.	N	
.0671	Anthem, Inc.	15807	47-3863197		0001156039		AMERIGROUP Iowa, Inc.	IA	IA	AMERIGROUP Corporation	Ownership	100.000	Anthem, Inc.	N	
.0671	Anthem, Inc.		45-4985009		0001156039		Amerigroup IPA of New York, LLC	NY	NIA	CareMore, LLC	Ownership	100.000	Anthem, Inc.	N	
.0671	Anthem, Inc.	14276	45-3358287		0001156039		Amerigroup Kansas, Inc.	KS	IA	Anthem Partnership Holding Company, LLC	Ownership	90.000	Anthem, Inc.	N	.0118
.0671	Anthem, Inc.	95832	51-0387398		0001156039		AMERIGROUP Maryland, Inc.	MD	IA	AMERIGROUP Corporation	Ownership	100.000	Anthem, Inc.	N	
.0671	Anthem, Inc.	16145	81-4626605		0001156039		Amerigroup Mississippi, Inc.	MS	IA	Anthem Partnership Holding Company, LLC	Ownership	100.000	Anthem, Inc.	N	
.0671	Anthem, Inc.	95373	22-3375292		0001156039		AMERIGROUP New Jersey, Inc.	NJ	IA	AMERIGROUP Corporation	Ownership	100.000	Anthem, Inc.	N	
.0671	Anthem, Inc.	10767	13-4212818		0001156039		AMERIGROUP Ohio, Inc.	OH	IA	AMERIGROUP Corporation	Ownership	100.000	Anthem, Inc.	N	
.0671	Anthem, Inc.	15994	81-2781685		0001156039		AMERIGROUP Oklahoma, Inc.	OK	IA	AMERIGROUP Corporation	Ownership	100.000	Anthem, Inc.	N	
.0671	Anthem, Inc.		36-3897080		0001156039		Amerigroup Partnership Plan, LLC	IL	NIA	Health Ventures Partner, L.L.C.	Ownership	75.000	Anthem, Inc.	N	
.0671	Anthem, Inc.		36-3897080		0001156039		Amerigroup Partnership Plan, LLC	IL	NIA	UNICARE Illinois Services, Inc.	Ownership	25.000	Anthem, Inc.	N	
.0671	Anthem, Inc.	16339	82-3734368		0001156039		Amerigroup Pennsylvania, Inc.	PA	IA	AMERIGROUP Corporation	Ownership	100.000	Anthem, Inc.	N	
.0671	Anthem, Inc.	12941	20-4776597		0001156039		AMERIGROUP Tennessee, Inc.	TN	IA	AMERIGROUP Corporation	Ownership	100.000	Anthem, Inc.	N	
.0671	Anthem, Inc.	95314	75-2603231		0001156039		AMERIGROUP Texas, Inc.	TX	IA	AMERIGROUP Corporation	Ownership	100.000	Anthem, Inc.	N	
.0671	Anthem, Inc.	14073	27-3510384		0001156039		AMERIGROUP Washington, Inc.	WA	IA	AMERIGROUP Corporation	Ownership	9.000	Anthem, Inc.	N	
.0671	Anthem, Inc.	12229	06-1696189		0001156039		AMGP Georgia Managed Care Company, Inc.	GA	IA	AMERIGROUP Corporation	Ownership	100.000	Anthem, Inc.	N	
.0671	Anthem, Inc.	16553	83-2435050		0001156039		AMH Health, LLC	ME	IA	Anthem Partnership Holding Company, LLC	Ownership	50.000	Anthem, Inc.	N	.0102
.0671	Anthem, Inc.	16774	84-4181695		0001156039		AMH Health Plans of Maine, Inc.	ME	IA	AMH Health, LLC	Ownership	100.000	Anthem, Inc.	N	
.0671	Anthem, Inc.	62825	95-4331852		0001156039		Anthem Blue Cross Life and Health Insurance Company	CA	IA	WellPoint California Services, Inc.	Ownership	100.000	Anthem, Inc.	N	
.0671	Anthem, Inc.		35-1898945		0001156039		Anthem Financial, Inc.	DE	NIA	Associated Group, Inc.	Ownership	100.000	Anthem, Inc.	N	
.0671	Anthem, Inc.	95120	61-1237516		0001156039		Anthem Health Plans of Kentucky, Inc.	KY	IA	ATH Holding Company, LLC	Ownership	100.000	Anthem, Inc.	N	
.0671	Anthem, Inc.	52618	31-1705652		0001156039		Anthem Health Plans of Maine, Inc.	ME	IA	ATH Holding Company, LLC	Ownership	100.000	Anthem, Inc.	N	
.0671	Anthem, Inc.	53759	02-0510530		0001156039		Anthem Health Plans of New Hampshire, Inc.	NH	IA	ATH Holding Company, LLC	Ownership	100.000	Anthem, Inc.	N	
.0671	Anthem, Inc.	71835	54-0357120	40003317	0001156039		Anthem Health Plans of Virginia, Inc.	VA	IA	Anthem Southeast, Inc.	Ownership	100.000	Anthem, Inc.	N	
.0671	Anthem, Inc.	60217	06-1475928		0001156039		Anthem Health Plans, Inc.	CT	IA	ATH Holding Company, LLC	Ownership	100.000	Anthem, Inc.	N	
.0671	Anthem, Inc.		61-1459939		0001156039		Anthem Holding Corp.	IN	NIA	Anthem, Inc.	Ownership	100.000	Anthem, Inc.	N	
.0671	Anthem, Inc.		35-2145715		0001156039	New York Stock Exchange (NYSE)	Anthem, Inc.	IN	UIP				Anthem, Inc.	N	
.0671	Anthem, Inc.		98-1492098		0001156039		Anthem Innovation Israel Ltd	ISR	NIA	Legato Holdings I, Inc.	Ownership	100.000	Anthem, Inc.	N	
.0671	Anthem, Inc.	28207	35-0781558		0001156039		Anthem Insurance Companies, Inc.	IN	IA	Anthem, Inc.	Ownership	100.000	Anthem, Inc.	N	
.0671	Anthem, Inc.	15543	47-0992859		0001156039		Anthem Kentucky Managed Care Plan, Inc.	KY	IA	ATH Holding Company, LLC	Ownership	100.000	Anthem, Inc.	N	
.0671	Anthem, Inc.	13573	20-5876774		0001156039		Anthem Life & Disability Insurance Company	NY	IA	WellPoint Acquisition, LLC	Ownership	100.000	Anthem, Inc.	N	
.0671	Anthem, Inc.	61069	35-0980405		0001156039		Anthem Life Insurance Company	IN	IA	Rocky Mountain Hospital and Medical Service, Inc.	Ownership	100.000	Anthem, Inc.	N	
.0671	Anthem, Inc.		81-3974489		0001156039		Anthem Partnership Holding Company, LLC	DE	NIA	Anthem, Inc.	Ownership	100.000	Anthem, Inc.	N	
.0671	Anthem, Inc.		46-0613946		0001156039		Anthem Services Company, LLC	IN	NIA	The Anthem Companies, Inc.	Ownership	100.000	Anthem, Inc.	N	
.0671	Anthem, Inc.		32-0031791		0001156039		Anthem Southeast, Inc.	IN	NIA	Anthem, Inc.	Ownership	100.000	Anthem, Inc.	N	
.0671	Anthem, Inc.		35-2129194		0001156039		Anthem UM Services, Inc.	IN	NIA	UNICARE Specialty Services, Inc.	Ownership	100.000	Anthem, Inc.	N	
.0671	Anthem, Inc.		30-0606541		0001156039		Anthem Workers' Compensation, LLC	IN	NIA	Company	Ownership	75.000	Anthem, Inc.	N	.0109
.0671	Anthem, Inc.		30-0606541		0001156039		Anthem Workers' Compensation, LLC	IN	NIA	HealthLink, Inc.	Ownership	25.000	Anthem, Inc.	N	.0109

STATEMENT AS OF SEPTEMBER 30, 2021 OF THE Empire HealthChoice HMO, Inc.

SCHEDULE Y
PART 1A - DETAIL OF INSURANCE HOLDING COMPANY SYSTEM

1	2	3	4	5	6	7	8	9	10	11	12	13	14	15	16
Group Code	Group Name	NAIC Company Code	ID Number	Federal RSSD	CIK	Name of Securities Exchange if Publicly Traded (U.S. or International)	Names of Parent, Subsidiaries Or Affiliates	Domiciliary Location	Relationship to Reporting Entity	Directly Controlled by (Name of Entity/Person)	Type of Control (Ownership, Board, Management, Attorney-in-Fact, Influence, Other)	If Control is Ownership Provide Percentage	Ultimate Controlling Entity(ies)/Person(s)	Is an SCA Filing Required? (Y/N)	*
.0671	Anthem, Inc.		80-0531799		0001156039		Applied Pathways, LLC	IL	NIA	American Imaging Management, Inc.	Ownership	53.520	Anthem, Inc.	N	.0108
.0671	Anthem, Inc.		80-0531799		0001156039		Applied Pathways, LLC	IL	NIA	HEP AP Holdings, Inc.	Ownership	46.480	Anthem, Inc.	N	.0108
.0671	Anthem, Inc.		95-4640529		0001156039		Arcus Enterprises, Inc.	DE	NIA	Anthem Holding Corp.	Ownership	100.000	Anthem, Inc.	N	
.0671	Anthem, Inc.		90-1057454		0001156039		Aspire Health, Inc.	DE	NIA	Nash Holding Company, LLC	Ownership	100.000	Anthem, Inc.	N	
.0671	Anthem, Inc.		35-1292384		0001156039		Associated Group, Inc.	IN	NIA	Anthem Insurance Companies, Inc.	Ownership	100.000	Anthem, Inc.	N	
.0671	Anthem, Inc.		11-3713086		0001156039		ATH Holding Company, LLC	IN	NIA	Anthem, Inc.	Ownership	100.000	Anthem, Inc.	N	
.0671	Anthem, Inc.		27-4004185		0001156039		Beacon CBHM LLC	DE	NIA	Beacon Health Financing LLC	Ownership	100.000	Anthem, Inc.	N	
.0671	Anthem, Inc.		27-4607996		0001156039		Beacon Health Financing LLC	DE	NIA	Beacon Health Holdings, LLC	Ownership	100.000	Anthem, Inc.	N	
.0671	Anthem, Inc.		80-0429754		0001156039		Beacon Health Holdings, LLC	DE	NIA	FHC Health Systems, Inc.	Ownership	100.000	Anthem, Inc.	N	
.0671	Anthem, Inc.		82-5334761		0001156039		Beacon Health Options Care Services, Inc.	DE	NIA	FHC Health Systems, Inc.	Ownership	100.000	Anthem, Inc.	N	
.0671	Anthem, Inc.		95-4297571		0001156039		Beacon Health Options of California, Inc.	CA	IA	Beacon Health Options, Inc.	Ownership	100.000	Anthem, Inc.	N	.0101
.0671	Anthem, Inc.	47025	23-2918735		0001156039		Beacon Health Options of Pennsylvania, Inc.	PA	IA	Beacon Health Options, Inc.	Ownership	100.000	Anthem, Inc.	N	
.0671	Anthem, Inc.		80-0427425		0001156039		Beacon Health Options Holdco, Inc.	DE	NIA	BVO Holdings, LLC	Ownership	100.000	Anthem, Inc.	N	
.0671	Anthem, Inc.		85-4218041		0001156039		Beacon Health Options of Ohio, Inc.	OH	NIA	Beacon Health Options, Inc.	Ownership	100.000	Anthem, Inc.	N	
.0671	Anthem, Inc.		54-1414194		0001156039		Beacon Health Options, Inc.	VA	NIA	FHC Health Systems, Inc.	Ownership	100.000	Anthem, Inc.	N	
.0671	Anthem, Inc.		04-3324848		0001156039		Beacon Health Strategies LLC	MA	NIA	Beacon Health Financing LLC	Ownership	100.000	Anthem, Inc.	N	
.0671	Anthem, Inc.		47-1871128		0001156039		Beacon Health Vista Parent, Inc.	DE	NIA	Beacon Health Options Holdco, Inc.	Ownership	100.000	Anthem, Inc.	N	
.0671	Anthem, Inc.		46-2507551		0001156039		Beacon Plan Funding, LLC	DE	NIA	Beacon Health Financing LLC	Ownership	100.000	Anthem, Inc.	N	
.0671	Anthem, Inc.		45-5208205		0001156039		BHS IPA, LLC	NY	NIA	Beacon Health Strategies LLC	Ownership	100.000	Anthem, Inc.	N	
.0671	Anthem, Inc.	96962	58-1638390		0001156039		Blue Cross Blue Shield Healthcare Plan of Georgia, Inc.	GA	IA	Cerulean Companies, Inc.	Ownership	100.000	Anthem, Inc.	N	
.0671	Anthem, Inc.	54003	39-0138065		0001156039		Blue Cross Blue Shield of Wisconsin	WI	IA	Crossroads Acquisition Corp.	Ownership	100.000	Anthem, Inc.	N	
.0671	Anthem, Inc.		95-3760980		0001156039		Blue Cross of California	CA	IA	WellPoint California Services, Inc.	Ownership	100.000	Anthem, Inc.	N	.0101
.0671	Anthem, Inc.		20-2994048		0001156039		Blue Cross of California Partnership Plan, Inc.	CA	IA	Blue Cross of California	Ownership	100.000	Anthem, Inc.	N	.0101
.0671	Anthem, Inc.		47-2272036		0001156039		BVO Holdings, LLC	DE	NIA	Anthem, Inc.	Ownership	100.000	Anthem, Inc.	N	
.0671	Anthem, Inc.		84-1782311		0001156039		CareMarket, Inc.	IN	NIA	ATH Holding Company, LLC	Ownership	100.000	Anthem, Inc.	N	
.0671	Anthem, Inc.		95-4694706		0001156039		CareMore Health Plan	CA	IA	CareMore Health System	Ownership	100.000	Anthem, Inc.	N	.0101
.0671	Anthem, Inc.	13562	38-3795280		0001156039		CareMore Health Plan of Arizona, Inc.	AZ	IA	CareMore Health System	Ownership	100.000	Anthem, Inc.	N	
.0671	Anthem, Inc.	13605	26-4001602		0001156039		CareMore Health Plan of Nevada	NV	IA	CareMore Health System	Ownership	100.000	Anthem, Inc.	N	
.0671	Anthem, Inc.		27-1625392		0001156039		CareMore Health Plan of Texas, Inc.	TX	NIA	CareMore Health System	Ownership	100.000	Anthem, Inc.	N	
.0671	Anthem, Inc.		32-0373216		0001156039		CareMore, LLC	IN	NIA	CareMore Health System	Ownership	100.000	Anthem, Inc.	N	
.0671	Anthem, Inc.		20-2076421		0001156039		CareMore Health System	CA	NIA	ATH Holding Company, LLC	Ownership	100.000	Anthem, Inc.	N	
.0671	Anthem, Inc.		66-0787011		0001156039		Caribbean Accountable Care, LLC	PR	NIA	MSO of Puerto Rico, LLC	Ownership	100.000	Anthem, Inc.	N	
.0671	Anthem, Inc.		66-0554720		0001156039		Castellana Physician Services, LLC	PR	NIA	IPA Holdings, LLC	Ownership	100.000	Anthem, Inc.	N	
.0671	Anthem, Inc.		66-0695526		0001156039		Centros de Medicina Primaria Advantage del Norte, LLC	PR	NIA	PHM MultiSalud, LLC	Ownership	100.000	Anthem, Inc.	N	
.0671	Anthem, Inc.		66-0519243		0001156039		Centros Medicina Familiar del Norte, LLC	PR	NIA	PHM MultiSalud, LLC	Ownership	100.000	Anthem, Inc.	N	
.0671	Anthem, Inc.		66-0530940		0001156039		Centros Medicos Unidos del Oeste, LLC	PR	NIA	PHM MultiSalud, LLC	Ownership	100.000	Anthem, Inc.	N	
.0671	Anthem, Inc.		58-2217138		0001156039		Cerulean Companies, Inc.	GA	NIA	Anthem Holding Corp.	Ownership	100.000	Anthem, Inc.	N	
.0671	Anthem, Inc.		39-1413702		0001156039		Claim Management Services, Inc.	WI	NIA	Blue Cross Blue Shield of Wisconsin	Ownership	100.000	Anthem, Inc.	N	
.0671	Anthem, Inc.	16345	82-1853423		0001156039		CCHA, LLC	CO	IA	Anthem Partnership Holding Company, LLC	Ownership	50.000	Anthem, Inc.	N	.0102
.0671	Anthem, Inc.				0001156039		CHCS IPA, Inc.	NY	NIA	Beacon Health Options, Inc.	Ownership	100.000	Anthem, Inc.	N	
.0671	Anthem, Inc.		66-0947900		0001156039		Clinica Todo Salud-Aibonito, LLC	PR	NIA	Clinica Todo Salud, LLC	Ownership	100.000	Anthem, Inc.	N	
.0671	Anthem, Inc.		66-0948046		0001156039		Clinica Todo Salud-Caguas, LLC	PR	NIA	Clinica Todo Salud, LLC	Ownership	100.000	Anthem, Inc.	N	
.0671	Anthem, Inc.		66-0947829		0001156039		Clinica Todo Salud, LLC	PR	NIA	MSO Holdings, LLC	Ownership	100.000	Anthem, Inc.	N	
.0671	Anthem, Inc.		66-0964118		0001156039		Clinical Staff Solutions, LLC	PR	NIA	MSO Holdings, LLC	Ownership	100.000	Anthem, Inc.	N	
.0671	Anthem, Inc.				0001156039		Community Care Health Plan of Louisiana, Inc.	LA	IA	Anthem Partnership Holding Company, LLC	Ownership	75.000	Anthem, Inc.	N	.0104
.0671	Anthem, Inc.	14064	26-4674149		0001156039		Community Care Health Plan of Nebraska, Inc.	NE	IA	Anthem Partnership Holding Company, LLC	Ownership	95.000	Anthem, Inc.	N	.0116
.0671	Anthem, Inc.	15951	47-5456872		0001156039		Community Care Health Plan of Nevada, Inc.	NV	IA	AMERIGROUP Corporation	Ownership	100.000	Anthem, Inc.	N	
.0671	Anthem, Inc.	12586	20-3317697		0001156039		Community Insurance Company	OH	IA	ATH Holding Company, LLC	Ownership	100.000	Anthem, Inc.	N	
.0671	Anthem, Inc.	10345	31-1440175		0001156039		CompCare Health Services Insurance Corporation	WI	IA	Blue Cross Blue Shield of Wisconsin	Ownership	100.000	Anthem, Inc.	N	

STATEMENT AS OF SEPTEMBER 30, 2021 OF THE Empire HealthChoice HMO, Inc.

SCHEDULE Y
PART 1A - DETAIL OF INSURANCE HOLDING COMPANY SYSTEM

1	2	3	4	5	6	7	8	9	10	11	12	13	14	15	16
Group Code	Group Name	NAIC Company Code	ID Number	Federal RSSD	CIK	Name of Securities Exchange if Publicly Traded (U.S. or International)	Names of Parent, Subsidiaries Or Affiliates	Domiciliary Location	Relationship to Reporting Entity	Directly Controlled by (Name of Entity/Person)	Type of Control (Ownership, Board, Management, Attorney-in-Fact, Influence, Other)	If Control is Ownership Provide Percentage	Ultimate Controlling Entity(ies)/Person(s)	Is an SCA Filing Required? (Y/N)	*
.0671	Anthem, Inc.		20-0334650		0001156039		Crossroads Acquisition Corp.	DE	NIA	Anthem Holding Corp.	Ownership	100.000	Anthem, Inc.	.N	
.0671	Anthem, Inc.		82-3027094		0001156039		DBG Holdings, Inc.	IN	NIA	Anthem, Inc.	Ownership	100.000	Anthem, Inc.	.N	
.0671	Anthem, Inc.		41-1905556		0001156039		DeCare Analytics, LLC	MN	NIA	DeCare Dental, LLC	Ownership	100.000	Anthem, Inc.	.N	
.0671	Anthem, Inc.		02-0574609		0001156039		DeCare Dental Health International, LLC	MN	NIA	DeCare Dental, LLC	Ownership	100.000	Anthem, Inc.	.N	
.0671	Anthem, Inc.				0001156039		DeCare Dental Insurance Ireland, Ltd.	IRL	NIA	DeCare Dental, LLC	Ownership	100.000	Anthem, Inc.	.N	
.0671	Anthem, Inc.		73-1665525		0001156039		DeCare Dental Networks, LLC	MN	NIA	DeCare Dental, LLC	Ownership	100.000	Anthem, Inc.	.N	
.0671	Anthem, Inc.		01-0822645		0001156039		DeCare Dental, LLC	MN	NIA	Anthem Holding Corp.	Ownership	100.000	Anthem, Inc.	.N	
.0671	Anthem, Inc.				0001156039		DeCare Operations Ireland, Limited	IRL	NIA	DeCare Dental, LLC	Ownership	100.000	Anthem, Inc.	.N	
.0671	Anthem, Inc.		20-0660775		0001156039		Delivery Network, LLC	FL	NIA	Highland Acquisition Holdings, LLC	Ownership	100.000	Anthem, Inc.	.N	
.0671	Anthem, Inc.		26-2544715		0001156039		Designated Agent Company, Inc.	KY	NIA	Anthem Health Plans of Kentucky, Inc.	Ownership	100.000	Anthem, Inc.	.N	
.0671	Anthem, Inc.		27-2844373		0001156039		EasyScripts Cutler Bay, LLC	FL	NIA	Highland Acquisition Holdings, LLC	Ownership	100.000	Anthem, Inc.	.N	
.0671	Anthem, Inc.		26-2974996		0001156039		EasyScripts Hialeah, LLC	FL	NIA	Highland Acquisition Holdings, LLC	Ownership	100.000	Anthem, Inc.	.N	
.0671	Anthem, Inc.		30-0478573		0001156039		EasyScripts LLC	FL	NIA	Highland Acquisition Holdings, LLC	Ownership	100.000	Anthem, Inc.	.N	
.0671	Anthem, Inc.		46-0613819		0001156039		EasyScripts Westchester, LLC	FL	NIA	Highland Acquisition Holdings, LLC	Ownership	100.000	Anthem, Inc.	.N	
.0671	Anthem, Inc.		13-3934328		0001156039		EHC Benefits Agency, Inc.	NY	NIA	WellPoint Holding Corp	Ownership	100.000	Anthem, Inc.	.N	
.0671	Anthem, Inc.	55093	23-7391136		0001156039		Empire HealthChoice Assurance, Inc.	NY	UDP	WellPoint Holding Corp	Ownership	100.000	Anthem, Inc.	.N	
.0671	Anthem, Inc.	95433	13-3874803		0001156039		Empire HealthChoice HMO, Inc.	NY	RE	Empire HealthChoice Assurance, Inc.	Ownership	100.000	Anthem, Inc.	.N	
.0671	Anthem, Inc.	16244	82-1454637		0001156039		Empower Healthcare Solutions, LLC	AR	IA	Beacon Health Options, Inc.	Ownership	16.600	Anthem, Inc.	.N	.0115
.0671	Anthem, Inc.		26-4286154		0001156039		Federal Government Solutions, LLC	WI	NIA	ATH Holding Company, LLC	Ownership	100.000	Anthem, Inc.	.N	
.0671	Anthem, Inc.		54-1230110		0001156039		FHC Health Systems, Inc.	VA	NIA	Beacon Health Vista Parent, Inc.	Ownership	100.000	Anthem, Inc.	.N	
.0671	Anthem, Inc.	10119	41-2128275		0001156039		Freedom Health, Inc.	FL	IA	AMERIGROUP Corporation	Ownership	100.000	Anthem, Inc.	.N	
.0671	Anthem, Inc.		95-2907752		0001156039		Golden West Health Plan, Inc.	CA	IA	WellPoint California Services, Inc.	Ownership	100.000	Anthem, Inc.	.N	.0101
.0671	Anthem, Inc.		84-4672692		0001156039		GR Health Solutions LLC	PA	NIA	Anthem Partnership Holding Company, LLC	Ownership	50.000	Anthem, Inc.	.N	.0102
.0671	Anthem, Inc.	97217	58-1473042		0001156039		Greater Georgia Life Insurance Company	GA	IA	Georgia, Inc.	Ownership	100.000	Anthem, Inc.	.N	
.0671	Anthem, Inc.	12812	30-0326654		0001156039		Group Retiree Health Solutions, Inc.	PA	IA	GR Health Solutions LLC	Ownership	100.000	Anthem, Inc.	.N	.0102
.0671	Anthem, Inc.		66-0695527		0001156039		Grupo Advantage del Oeste, LLC	PR	NIA	PHM MultiSalud, LLC	Ownership	100.000	Anthem, Inc.	.N	
.0671	Anthem, Inc.		66-0927403		0001156039		Grupo Advantage Metro, LLC	PR	NIA	PHM MultiSalud, LLC	Ownership	100.000	Anthem, Inc.	.N	
.0671	Anthem, Inc.		51-0365660		0001156039		Health Core, Inc.	DE	NIA	Arcus Enterprises, Inc.	Ownership	100.000	Anthem, Inc.	.N	
.0671	Anthem, Inc.		54-1237939		0001156039		Health Management Corporation	VA	NIA	Southeast Services, Inc.	Ownership	100.000	Anthem, Inc.	.N	
.0671	Anthem, Inc.		36-3897701		0001156039		Health Ventures Partner, L.L.C.	IL	NIA	UNICARE National Services, Inc.	Ownership	100.000	Anthem, Inc.	.N	
.0671	Anthem, Inc.	95169	54-1356687		0001156039		HealthKeepers, Inc.	VA	IA	Anthem Southeast, Inc.	Ownership	92.510	Anthem, Inc.	.N	
.0671	Anthem, Inc.	95169	54-1356687		0001156039		HealthKeepers, Inc.	VA	IA	UNICARE National Services, Inc.	Ownership	7.490	Anthem, Inc.	.N	
.0671	Anthem, Inc.	96475	43-1616135		0001156039		HealthLink HMO, Inc.	MO	IA	HealthLink, Inc.	Ownership	100.000	Anthem, Inc.	.N	
.0671	Anthem, Inc.		43-1364135		0001156039		HealthLink, Inc.	IL	NIA	RightCHOICE Managed Care, Inc.	Ownership	100.000	Anthem, Inc.	.N	
.0671	Anthem, Inc.	16574	13-3865627		0001156039		HealthPlus HP, LLC	NY	IA	AMERIGROUP Corporation	Ownership	100.000	Anthem, Inc.	.N	.0100
.0671	Anthem, Inc.	10122	20-0982649		0001156039		HealthSun Health Plans, Inc.	FL	IA	AMERIGROUP Corporation	Ownership	100.000	Anthem, Inc.	.N	
.0671	Anthem, Inc.		46-5250294		0001156039		HealthSun Physicians Network, LLC	FL	NIA	Delivery Network, LLC	Ownership	100.000	Anthem, Inc.	.N	
.0671	Anthem, Inc.		46-3434016		0001156039		HealthSun Physicians Network I, LLC	FL	NIA	HealthSun Physicians Network, LLC	Ownership	100.000	Anthem, Inc.	.N	
.0671	Anthem, Inc.	78972	86-0257201		0001156039		Healthy Alliance Life Insurance Company	MO	IA	RightCHOICE Managed Care, Inc.	Ownership	100.000	Anthem, Inc.	.N	
.0671	Anthem, Inc.		47-3953545		0001156039		HEP AP Holdings, Inc.	DE	NIA	Imaging Management Holdings, L.L.C.	Ownership	100.000	Anthem, Inc.	.N	
.0671	Anthem, Inc.		81-3471305		0001156039		Highland Acquisition Holdings, LLC	DE	NIA	Highland Intermediate Holdings, LLC	Ownership	100.000	Anthem, Inc.	.N	
.0671	Anthem, Inc.		81-3487249		0001156039		Highland Intermediate Holdings, LLC	DE	NIA	Highland Investor Holdings, LLC	Ownership	100.000	Anthem, Inc.	.N	
.0671	Anthem, Inc.		81-3493196		0001156039		Highland Investor Holdings, LLC	DE	NIA	ATH Holding Company, LLC	Ownership	98.000	Anthem, Inc.	.N	.0107
.0671	Anthem, Inc.		81-3493196		0001156039		Highland Investor Holdings, LLC	DE	NIA	AMERIGROUP Corporation	Ownership	2.000	Anthem, Inc.	.N	.0107
.0671	Anthem, Inc.	95473	84-1017384		0001156039		HMO Colorado, Inc.	CO	IA	Rocky Mountain Hospital and Medical Service, Inc.	Ownership	100.000	Anthem, Inc.	.N	
.0671	Anthem, Inc.	95358	37-1216698		0001156039		HMO Missouri, Inc.	MO	IA	RightCHOICE Managed Care, Inc.	Ownership	100.000	Anthem, Inc.	.N	
.0671	Anthem, Inc.		83-2158120		0001156039		IEC Group Holdings, Inc.	ID	NIA	ATH Holding Company, LLC	Ownership	100.000	Anthem, Inc.	.N	
.0671	Anthem, Inc.		82-0497661		0001156039		IEC Group, Inc. d/b/a AmeriBen	ID	NIA	IEC Group Holdings, Inc.	Ownership	100.000	Anthem, Inc.	.N	
.0671	Anthem, Inc.		75-2619605		0001156039		Imaging Management Holdings, L.L.C.	DE	NIA	ATH Holding Company, LLC	Ownership	100.000	Anthem, Inc.	.N	
.0671	Anthem, Inc.		82-3062245		0001156039		IngenioRX, Inc.	IN	NIA	DBG Holdings, Inc.	Ownership	100.000	Anthem, Inc.	.N	
.0671	Anthem, Inc.		66-0884762		0001156039		InHealth Management, LLC	PR	NIA	MSO Holdings, LLC	Ownership	100.000	Anthem, Inc.	.N	
.0671	Anthem, Inc.		66-0959260		0001156039		IPA Holdings, LLC	PR	NIA	MSO Holdings, LLC	Ownership	100.000	Anthem, Inc.	.N	

STATEMENT AS OF SEPTEMBER 30, 2021 OF THE Empire HealthChoice HMO, Inc.

SCHEDULE Y
PART 1A - DETAIL OF INSURANCE HOLDING COMPANY SYSTEM

1	2	3	4	5	6	7	8	9	10	11	12	13	14	15	16
Group Code	Group Name	NAIC Company Code	ID Number	Federal RSSD	CIK	Name of Securities Exchange if Publicly Traded (U.S. or International)	Names of Parent, Subsidiaries Or Affiliates	Domi-ciliary Location	Relation-ship to Reporting Entity	Directly Controlled by (Name of Entity/Person)	Type of Control (Ownership, Board, Management, Attorney-in-Fact, Influence, Other)	If Control is Ownership Provide Percentage	Ultimate Controlling Entity(ies)/Person(s)	Is an SCA Filing Re-quired? (Y/N)	*
.0671	Anthem, Inc.		98-1397080		0001156039		Legato Health Technologies LLP	IN	NIA	Legato Holdings I, Inc.	Ownership	100.000	Anthem, Inc.	N	.0105
.0671	Anthem, Inc.				0001156039		Legato Health Technologies Ireland, Ltd	IRL	NIA	Legato Holdings I, Inc.	Ownership	100.000	Anthem, Inc.	N	
.0671	Anthem, Inc.		98-1490582		0001156039		Legato Health Technologies Philippines, Inc.	PHL	NIA	Legato Holdings I, Inc.	Ownership	100.000	Anthem, Inc.	N	.0106
.0671	Anthem, Inc.				0001156039		Legato Health Technologies Puerto Rico, LLC	PR	NIA	Legato Holdings I, Inc.	Ownership	100.000	Anthem, Inc.	N	
.0671	Anthem, Inc.		82-3030791		0001156039		Legato Holdings I, Inc.	IN	NIA	Anthem, Inc.	Ownership	100.000	Anthem, Inc.	N	
.0671	Anthem, Inc.		82-3031178		0001156039		Legato Holdings II, LLC	IN	NIA	Legato Holdings I, Inc.	Ownership	100.000	Anthem, Inc.	N	
.0671	Anthem, Inc.		87-2164713		0001156039		Legato Health Technologies, U.S., Inc	IN	NIA	Legato Holdings I, Inc.	Ownership	100.000	Anthem, Inc.	N	
.0671	Anthem, Inc.		02-0581429		0001156039		Living Complete Technologies, Inc.	MD	NIA	ATH Holding Company, LLC	Ownership	100.000	Anthem, Inc.	N	
.0671	Anthem, Inc.		04-3307857		0001156039		Massachusetts Behavioral Health Partnership	MA	NIA	Beacon Health Options, Inc.	Ownership	50.000	Anthem, Inc.	N	.0111
.0671	Anthem, Inc.		04-3307857		0001156039		Massachusetts Behavioral Health Partnership	MA	NIA	OPTIONS Health Care, Inc.	Ownership	50.000	Anthem, Inc.	N	.0111
.0671	Anthem, Inc.	95527	02-0494919		0001156039		Matthew Thornton Health Plan, Inc.	NH	IA	Anthem Health Plans of New Hampshire, Inc.	Ownership	100.000	Anthem, Inc.	N	
.0671	Anthem, Inc.		66-0823267		0001156039		Medical Dental Network Management, LLC	PR	NIA	MMM Holdings, LLC	Ownership	100.000	Anthem, Inc.	N	
.0671	Anthem, Inc.		39-2013971		0001156039		Meridian Resource Company, LLC	WI	NIA	Compcare Health Services Insurance Corporation	Ownership	100.000	Anthem, Inc.	N	
.0671	Anthem, Inc.	12913	20-5862801		0001156039		Missouri Care, Incorporated	MO	IA	ATH Holding Company, LLC	Ownership	100.000	Anthem, Inc.	N	
.0671	Anthem, Inc.	11157	66-0588600		0001156039		MMM Healthcare, LLC	PR	IA	MMM Holdings, LLC	Ownership	100.000	Anthem, Inc.	N	
.0671	Anthem, Inc.		66-0649625		0001156039		MMM Holdings, LLC	PR	NIA	MMM Puerto Rico, Inc.	Ownership	100.000	Anthem, Inc.	N	
.0671	Anthem, Inc.	12534	66-0653763		0001156039		MMM Multi Health, LLC	PR	IA	MMM Holdings, LLC	Ownership	100.000	Anthem, Inc.	N	
.0671	Anthem, Inc.		66-0794203		0001156039		MMM Puerto Rico, Inc.	PR	NIA	ATH Holding Company, LLC	Ownership	100.000	Anthem, Inc.	N	
.0671	Anthem, Inc.		82-4684953		0001156039		Momentum Health Partners, LLC	NC	NIA	Anthem Partnership Holding Company, LLC	Ownership	50.000	Anthem, Inc.	N	.0102
.0671	Anthem, Inc.		66-0645750		0001156039		MISO Holdings, LLC	PR	NIA	MMM Puerto Rico, Inc.	Ownership	100.000	Anthem, Inc.	N	
.0671	Anthem, Inc.		66-0719637		0001156039		MISO of Puerto Rico, LLC	PR	NIA	MISO Holdings, LLC	Ownership	100.000	Anthem, Inc.	N	
.0671	Anthem, Inc.		84-1811105		0001156039		myNEXUS Holdings, Inc.	DE	NIA	ATH Holding Company, LLC	Ownership	100.000	Anthem, Inc.	N	
.0671	Anthem, Inc.		47-4671638		0001156039		myNexus, Inc.	DE	NIA	myNEXUS Management, Inc.	Ownership	100.000	Anthem, Inc.	N	
.0671	Anthem, Inc.		84-1801030		0001156039		myNEXUS Management, Inc.	DE	NIA	myNEXUS Holdings, Inc.	Ownership	100.000	Anthem, Inc.	N	
.0671	Anthem, Inc.		81-4603181		0001156039		myNEXUS NPHO of TEXAS	TX	NIA	MyNexus, Inc.	Ownership	100.000	Anthem, Inc.	N	
.0671	Anthem, Inc.		85-0541810		0001156039		myNEXUS NY IPA, LLC	NY	NIA	MyNexus, Inc.	Ownership	100.000	Anthem, Inc.	N	
.0671	Anthem, Inc.		83-0892028		0001156039		Nash Holding Company, LLC	DE	NIA	ATH Holding Company, LLC	Ownership	100.000	Anthem, Inc.	N	
.0671	Anthem, Inc.		35-1840597		0001156039		National Government Services, Inc.	IN	NIA	Federal Government Solutions, LLC	Ownership	100.000	Anthem, Inc.	N	
.0671	Anthem, Inc.		04-2919509		0001156039		New England Research Institute, Inc.	MA	NIA	Health Core, Inc.	Ownership	100.000	Anthem, Inc.	N	
.0671	Anthem, Inc.		81-5476630		0001156039		NGS Federal, LLC	IN	NIA	Federal Government Solutions, LLC	Ownership	100.000	Anthem, Inc.	N	
.0671	Anthem, Inc.		20-1847098		0001156039		North Florida Behavioral Health Partners, Inc.	FL	NIA	Beacon Health Options, Inc.	Ownership	50.000	Anthem, Inc.	N	.0113
.0671	Anthem, Inc.	12259	20-1336412		0001156039		Optimum Healthcare, Inc.	FL	IA	AMERIGROUP Corporation	Ownership	100.000	Anthem, Inc.	N	
.0671	Anthem, Inc.		54-1826967		0001156039		OPTIONS Health Care, Inc.	DE	NIA	Beacon Health Options, Inc.	Ownership	100.000	Anthem, Inc.	N	
.0671	Anthem, Inc.		95-4249368		0001156039		Park Square Holdings, Inc.	CA	NIA	WellPoint California Services, Inc.	Ownership	100.000	Anthem, Inc.	N	
.0671	Anthem, Inc.		95-4386221		0001156039		Park Square I, Inc.	CA	NIA	WellPoint California Services, Inc.	Ownership	100.000	Anthem, Inc.	N	
.0671	Anthem, Inc.		95-4249345		0001156039		Park Square II, Inc.	CA	NIA	WellPoint California Services, Inc.	Ownership	100.000	Anthem, Inc.	N	
.0671	Anthem, Inc.		27-1991772		0001156039		Pasteur Medical Bird Road, LLC	FL	NIA	Highland Acquisition Holdings, LLC	Ownership	100.000	Anthem, Inc.	N	
.0671	Anthem, Inc.		20-2749389		0001156039		Pasteur Medical Center, LLC	DE	NIA	Highland Acquisition Holdings, LLC	Ownership	100.000	Anthem, Inc.	N	
.0671	Anthem, Inc.		27-1366915		0001156039		Pasteur Medical Cutler Bay, LLC	FL	NIA	Highland Acquisition Holdings, LLC	Ownership	100.000	Anthem, Inc.	N	
.0671	Anthem, Inc.		20-0610128		0001156039		Pasteur Medical Group, LLC	FL	NIA	Highland Acquisition Holdings, LLC	Ownership	100.000	Anthem, Inc.	N	
.0671	Anthem, Inc.		37-1668303		0001156039		Pasteur Medical Hialeah Gardens, LLC	FL	NIA	Highland Acquisition Holdings, LLC	Ownership	100.000	Anthem, Inc.	N	
.0671	Anthem, Inc.		47-3464152		0001156039		Pasteur Medical Kendall, LLC	FL	NIA	Highland Acquisition Holdings, LLC	Ownership	100.000	Anthem, Inc.	N	
.0671	Anthem, Inc.		27-2810478		0001156039		Pasteur Medical Management, LLC	FL	NIA	Highland Acquisition Holdings, LLC	Ownership	100.000	Anthem, Inc.	N	
.0671	Anthem, Inc.		33-1217936		0001156039		Pasteur Medical Miami Gardens, LLC	FL	NIA	Highland Acquisition Holdings, LLC	Ownership	100.000	Anthem, Inc.	N	
.0671	Anthem, Inc.		27-2651017		0001156039		Pasteur Medical North Miami Beach, LLC	FL	NIA	Highland Acquisition Holdings, LLC	Ownership	100.000	Anthem, Inc.	N	
.0671	Anthem, Inc.		26-0813665		0001156039		Pasteur Medical Partners, LLC	FL	NIA	Highland Acquisition Holdings, LLC	Ownership	100.000	Anthem, Inc.	N	
.0671	Anthem, Inc.		66-0693134		0001156039		PHM Healthcare Solutions, Inc.	PR	NIA	Physician Group Practices, LLC	Ownership	100.000	Anthem, Inc.	N	
.0671	Anthem, Inc.		66-0864220		0001156039		PHM Intrahospital Physician Group, LLC	PR	NIA	PHM MultiSalud, LLC	Ownership	100.000	Anthem, Inc.	N	
.0671	Anthem, Inc.		66-0812014		0001156039		PHM Multidisciplinary Clinic Arecibo LLC	PR	NIA	PHM Multidisciplinary Clinic, LLC	Ownership	100.000	Anthem, Inc.	N	
.0671	Anthem, Inc.		66-0811976		0001156039		PHM Multidisciplinary Clinic Aguadilla LLC	PR	NIA	PHM Multidisciplinary Clinic, LLC	Ownership	100.000	Anthem, Inc.	N	

STATEMENT AS OF SEPTEMBER 30, 2021 OF THE Empire HealthChoice HMO, Inc.

SCHEDULE Y
PART 1A - DETAIL OF INSURANCE HOLDING COMPANY SYSTEM

1	2	3	4	5	6	7	8	9	10	11	12	13	14	15	16
Group Code	Group Name	NAIC Company Code	ID Number	Federal RSSD	CIK	Name of Securities Exchange if Publicly Traded (U.S. or International)	Names of Parent, Subsidiaries Or Affiliates	Domiciliary Location	Relationship to Reporting Entity	Directly Controlled by (Name of Entity/Person)	Type of Control (Ownership, Board, Management, Attorney-in-Fact, Influence, Other)	If Control is Ownership Provide Percentage	Ultimate Controlling Entity(ies)/Person(s)	Is an SCA Filing Required? (Y/N)	*
.0671	Anthem, Inc.		66-0925853		0001156039		PHM Multidisciplinary Clinic Cabo Rojo LLC	PR	NIA	PHM MultiDisciplinary Clinic, LLC	Ownership	100.000	Anthem, Inc.	N	
.0671	Anthem, Inc.		66-0859950		0001156039		PHM MultiDisciplinary Clinic, LLC	PR	NIA	PHM MultiSalud, LLC	Ownership	100.000	Anthem, Inc.	N	
.0671	Anthem, Inc.		66-0764408		0001156039		PHM Multidisciplinary Clinic Guayama LLC	PR	NIA	PHM MultiDisciplinary Clinic, LLC	Ownership	100.000	Anthem, Inc.	N	
.0671	Anthem, Inc.		66-0949111		0001156039		PHM Multidisciplinary Clinic Maunabo LLC	PR	NIA	PHM MultiDisciplinary Clinic, LLC	Ownership	100.000	Anthem, Inc.	N	
.0671	Anthem, Inc.		66-0867882		0001156039		PHM MultiSalud, LLC	PR	NIA	Physician Group Practices, LLC	Ownership	100.000	Anthem, Inc.	N	
.0671	Anthem, Inc.		66-0864171		0001156039		PHM Specialty Network, LLC	PR	NIA	PHM MultiSalud, LLC	Ownership	100.000	Anthem, Inc.	N	
.0671	Anthem, Inc.		66-0960976		0001156039		Physician Group Practices, LLC	PR	NIA	IPA Holdings, LLC	Ownership	100.000	Anthem, Inc.	N	
.0671	Anthem, Inc.	12178	66-0592131		0001156039		PMC Medicare Choice, LLC	PR	IA	MMH Holdings, LLC	Ownership	100.000	Anthem, Inc.	N	
.0671	Anthem, Inc.		56-2396739		0001156039		Resolution Health, Inc.	DE	NIA	Anthem Southeast, Inc.	Ownership	100.000	Anthem, Inc.	N	
.0671	Anthem, Inc.		47-0851593		0001156039		RightCHOICE Managed Care, Inc.	DE	NIA	Anthem Holding Corp.	Ownership	100.000	Anthem, Inc.	N	
.0671	Anthem, Inc.	11011	84-0747736		0001156039		Rocky Mountain Hospital and Medical Service, Inc.	CO	IA	ATH Holding Company, LLC	Ownership	100.000	Anthem, Inc.	N	
.0671	Anthem, Inc.		20-0473316		0001156039		SellCore, Inc.	DE	NIA	Anthem, Inc.	Ownership	100.000	Anthem, Inc.	N	
.0671	Anthem, Inc.	13726	27-0945036		0001156039		Simply Healthcare Plans, Inc.	FL	IA	AMERIGROUP Corporation	Ownership	100.000	Anthem, Inc.	N	
.0671	Anthem, Inc.		55-0712302		0001156039		Southeast Services, Inc.	VA	NIA	Anthem Southeast, Inc.	Ownership	100.000	Anthem, Inc.	N	
.0671	Anthem, Inc.		45-4071004		0001156039		State Sponsored Services, Inc.	IN	NIA	UNICARE Specialty Services, Inc.	Ownership	100.000	Anthem, Inc.	N	
.0671	Anthem, Inc.		35-1835818		0001156039		The Anthem Companies, Inc.	IN	NIA	ATH Holding Company, LLC	Ownership	100.000	Anthem, Inc.	N	
.0671	Anthem, Inc.		45-5443372		0001156039		The Anthem Companies of California, Inc.	CA	NIA	ATH Holding Company, LLC	Ownership	100.000	Anthem, Inc.	N	
.0671	Anthem, Inc.		43-1967924		0001156039		TriADD NY, LLC dba MyCompass	NY	NIA	Alliance Care Management, LLC	Ownership	25.000	Anthem, Inc.	N	017
.0671	Anthem, Inc.	11810	84-1620480		0001156039		TrustSolutions, LLC	WI	NIA	Federal Government Solutions, LLC	Ownership	100.000	Anthem, Inc.	N	
.0671	Anthem, Inc.		36-3899137		0001156039		UNICARE Health Plan of West Virginia, Inc.	WV	IA	UNICARE National Services, Inc.	Ownership	100.000	Anthem, Inc.	N	
.0671	Anthem, Inc.	80314	52-0913817		0001156039		UNICARE Illinois Services, Inc.	IL	NIA	UNICARE National Services, Inc.	Ownership	100.000	Anthem, Inc.	N	
.0671	Anthem, Inc.		95-4635507		0001156039		UNICARE Life & Health Insurance Company	IN	IA	UNICARE National Services, Inc.	Ownership	100.000	Anthem, Inc.	N	
.0671	Anthem, Inc.		77-0494551		0001156039		UNICARE National Services, Inc.	DE	NIA	Anthem Holding Corp.	Ownership	100.000	Anthem, Inc.	N	
.0671	Anthem, Inc.		45-4238555		0001156039		UNICARE Specialty Services, Inc.	DE	NIA	Anthem Holding Corp.	Ownership	100.000	Anthem, Inc.	N	
.0671	Anthem, Inc.		20-8819392		0001156039		ValueOptions Federal Services, Inc.	VA	NIA	Beacon Health Options, Inc.	Ownership	100.000	Anthem, Inc.	N	
.0671	Anthem, Inc.	15448	46-2053405		0001156039		ValueOptions of Kansas, Inc.	KS	NIA	Beacon Health Options, Inc.	Ownership	100.000	Anthem, Inc.	N	
.0671	Anthem, Inc.	95799	75-2749263		0001156039		ValueOptions of New Jersey, Inc.	NJ	IA	Beacon Health Options, Inc.	Ownership	100.000	Anthem, Inc.	N	
.0671	Anthem, Inc.		82-3300542		0001156039		ValueOptions of Texas, Inc.	TX	IA	Beacon Health Options, Inc.	Ownership	100.000	Anthem, Inc.	N	
.0671	Anthem, Inc.		66-0865037		0001156039		Value, Inc.	IN	NIA	DBG Holdings, Inc.	Ownership	100.000	Anthem, Inc.	N	
.0671	Anthem, Inc.		20-0660563		0001156039		VITA CARE, LLC	PR	NIA	MSO Holdings, LLC	Ownership	100.000	Anthem, Inc.	N	
.0671	Anthem, Inc.		20-0660644		0001156039		WellMax Health Medical Centers, LLC	FL	NIA	Delivery Network, LLC	Ownership	100.000	Anthem, Inc.	N	
.0671	Anthem, Inc.		20-4405193		0001156039		WellMax Health Physicians Network, LLC	FL	NIA	Delivery Network, LLC	Ownership	100.000	Anthem, Inc.	N	
.0671	Anthem, Inc.		95-4640531		0001156039		WellPoint Acquisition, LLC	IN	NIA	Anthem, Inc.	Ownership	100.000	Anthem, Inc.	N	
.0671	Anthem, Inc.		95-4657170		0001156039		WellPoint California Services, Inc.	DE	NIA	Anthem Holding Corp.	Ownership	100.000	Anthem, Inc.	N	
.0671	Anthem, Inc.		81-2874917		0001156039		WellPoint Dental Services, Inc.	DE	NIA	UNICARE Specialty Services, Inc.	Ownership	100.000	Anthem, Inc.	N	
.0671	Anthem, Inc.		20-3620996		0001156039		WellPoint Health Solutions, Inc.	DE	NIA	Federal Government Solutions, LLC	Ownership	100.000	Anthem, Inc.	N	
.0671	Anthem, Inc.		45-2736438		0001156039		WellPoint Holding Corp	DE	UIP	Anthem, Inc.	Ownership	100.000	Anthem, Inc.	N	
.0671	Anthem, Inc.		36-4595641		0001156039		WellPoint Information Technology Services, Inc.	CA	NIA	Blue Cross of California	Ownership	100.000	Anthem, Inc.	N	
.0671	Anthem, Inc.		47-2546820		0001156039		WellPoint Insurance Services, Inc.	HI	NIA	Anthem, Inc.	Ownership	100.000	Anthem, Inc.	N	
.0671	Anthem, Inc.	15929	47-5569628		0001156039		WellPoint Military Care Corporation	IN	NIA	Federal Government Solutions, LLC	Ownership	100.000	Anthem, Inc.	N	
.0671	Anthem, Inc.		47-3025203		0001156039		Wisconsin Collaborative Insurance Company	WI	IA	Crossroads Acquisition Corp.	Ownership	55.000	Anthem, Inc.	N	0110
.0671	Anthem, Inc.				0001156039		ZipDrug Inc.	DE	NIA	IngenioRx, Inc.	Ownership	100.000	Anthem, Inc.	N	

Asterisk	Explanation
0100	Insurer is deemed to be an insurance affiliate in column 10 and has an NAIC Company Code in column 3. However, it does not file an NAIC statutory statement because it is regulated by the New York State Department of Health.
0101	Insurer is deemed to be an insurance affiliate in column 10, but does not have an NAIC Company Code in column 3 because it is regulated by the California Department of Managed Health Care.
0102	50% owned by unaffiliated investors
0103	30.09% owned by unaffiliated investors

STATEMENT AS OF SEPTEMBER 30, 2021 OF THE Empire HealthChoice HMO, Inc.

Asterisk	Explanation
0104	25% owned by an unaffiliated investor
0105	Legato Health Technologies LLP is a Limited Liability Partnership formed under the laws of India, and is 99% owned by Legato Holdings I, Inc. an Indiana corporation, and 1% owned by Legato Holdings II, LLC, an Indiana Limited Liability company.
0106	Legato Health Technologies Philippines, Inc. was incorporated under with the Republic of the Philippines, and is 100% owned by Legato Holdings I, Inc. an Indiana corporation.
0107	Highland Investor Holding LLC is a Limited Liability Company formed under the laws of Delaware, and is 98% owned by ATH Holding Company, LLC. an Indiana limited liability company, and Amerigroup Corporation holds the remaining 2% interest..
0108	Applied Pathways, LLC is a Limited Liability Company formed under the laws of Illinois, and is 53.52% owned by American Imaging Management, Inc. an Illinois limited liability company, and 46.48% owned by HEP AP Holdings, Inc., a Delaware corporation.
0109	Anthem Worker's Compensation, LLC is owned 75% by Anthem Blue Cross Life and Health Insurance Company and 25% by HealthLink, Inc.
0110	45% of WCIC is owned by Aurora Health Care, Inc. (non-affiliate) and 55% by Crossroads Acquisition Corp
0111	Massachusetts Behavioral Health Partnership is a General Partnership formed under the laws of Massachusetts, and is 50% owned by Beacon Health Options, Inc., a Virginia corporation, and 50% owned by OPTIONS Health Care, Inc., a Delaware corporation.
0112	Florida Health Partners, Inc. is 50% owned by Beacon Health Options, Inc. and 50% owned by Florida Behavioral Health, Inc. (non-affiliate)
0113	North Florida Behavioral Health Partners, Inc. is 50% owned by Beacon Health Options, Inc. and 50% owned by North Florida Behavioral Health Network, Inc. (non-affiliate)
0114	75% owned by an unaffiliated investor
0115	83.4% owned by unaffiliated investors
0116	5% owned by an unaffiliated investor
0117	TriADD NY, LLC dba MyCompass (NY) is owned 25% by Alliance Care Management, LLC and 75% by non-affiliates.
0118	Blue Cross and Blue Shield of Kansas, Inc. and Blue Cross and Blue Shield of Kansas City (non affiliates), each own 5% of Amerigroup Kansas, Inc., with the remaining 90% owned by Anthem Partnership Holding Company, LLC.

SUPPLEMENTAL EXHIBITS AND SCHEDULES INTERROGATORIES

The following supplemental reports are required to be filed as part of your statement filing. However, in the event that your company does not transact the type of business for which the special report must be filed, your response of NO to the specific interrogatory will be accepted in lieu of filing a "NONE" report and a bar code will be printed below. If the supplement is required of your company but is not being filed for whatever reason enter SEE EXPLANATION and provide an explanation following the interrogatory questions.

	Response
1. Will the Medicare Part D Coverage Supplement be filed with the state of domicile and the NAIC with this statement?	NO

Explanation:

1.

Bar Code:

1. Medicare Part D Coverage Supplement [Document Identifier 365]



OVERFLOW PAGE FOR WRITE-INS

Additional Write-ins for Assets Line 25

	Current Statement Date			4 Prior Year Net Admitted Assets
	1 Assets	2 Nonadmitted Assets	3 Net Admitted Assets (Cols. 1 - 2)	
2504. Premium Tax Recoverable	1,278,947		1,278,947	1,574,458
2505. New York Assessment	533,698		533,698	3,089,575
2506. State Income Tax Recoverable	380,204		380,204	0
2507. Stop Loss Receivables (NY Regulation 4321, 4322 & 4327)	194,103		194,103	194,103
2508. Miscellaneous Receivables	87,922	362	87,560	801,862
2509. Blue Card Program Receivables	130,763	103,301	27,462	116,361
2597. Summary of remaining write-ins for Line 25 from overflow page	2,605,637	103,663	2,501,974	5,776,359

Additional Write-ins for Liabilities Line 23

	Current Period			Prior Year 4 Total
	1 Covered	2 Uncovered	3 Total	
2304. Other Premium Liability	141,592		141,592	280,510
2305. Out of Area Program Payable			0	180,000
2397. Summary of remaining write-ins for Line 23 from overflow page	141,592	0	141,592	460,510

SCHEDULE A - VERIFICATION

Real Estate

	1 Year to Date	2 Prior Year Ended December 31
1. Book/adjusted carrying value, December 31 of prior year		
2. Cost of acquired:		
2.1 Actual cost at time of acquisition		
2.2 Additional investment made after acquisition		
3. Current year change in encumbrances		
4. Total gain (loss) on disposals		
5. Deduct amounts received on disposals		
6. Total foreign exchange change in book/adjusted carrying value		
7. Deduct current year's other than temporary impairment recognized		
8. Deduct current year's depreciation		
9. Book/adjusted carrying value at the end of current period (Lines 1+2+3+4-5+6-7-8)		
10. Deduct total nonadmitted amounts		
11. Statement value at end of current period (Line 9 minus Line 10)		

NONE**SCHEDULE B - VERIFICATION**

Mortgage Loans

	1 Year to Date	2 Prior Year Ended December 31
1. Book value/recorded investment excluding accrued interest, December 31 of prior year		
2. Cost of acquired:		
2.1 Actual cost at time of acquisition		
2.2 Additional investment made after acquisition		
3. Capitalized deferred interest and other		
4. Accrual of discount		
5. Unrealized valuation increase (decrease)		
6. Total gain (loss) on disposals		
7. Deduct amounts received on disposals		
8. Deduct amortization of premium and mortgage interest points and commitment fees		
9. Total foreign exchange change in book value/recorded investment excluding accrued interest		
10. Deduct current year's other than temporary impairment recognized		
11. Book value/recorded investment excluding accrued interest at end of current period (Lines 1+2+3+4+5+6-7-8+9-10)		
12. Total valuation allowance		
13. Subtotal (Line 11 plus Line 12)		
14. Deduct total nonadmitted amounts		
15. Statement value at end of current period (Line 13 minus Line 14)		

NONE**SCHEDULE BA - VERIFICATION**

Other Long-Term Invested Assets

	1 Year to Date	2 Prior Year Ended December 31
1. Book/adjusted carrying value, December 31 of prior year		
2. Cost of acquired:		
2.1 Actual cost at time of acquisition		
2.2 Additional investment made after acquisition		
3. Capitalized deferred interest and other		
4. Accrual of discount		
5. Unrealized valuation increase (decrease)		
6. Total gain (loss) on disposals		
7. Deduct amounts received on disposals		
8. Deduct amortization of premium and depreciation		
9. Total foreign exchange change in book/adjusted carrying value		
10. Deduct current year's other than temporary impairment recognized		
11. Book/adjusted carrying value at end of current period (Lines 1+2+3+4+5+6-7-8+9-10)		
12. Deduct total nonadmitted amounts		
13. Statement value at end of current period (Line 11 minus Line 12)		

NONE**SCHEDULE D - VERIFICATION**

Bonds and Stocks

	1 Year to Date	2 Prior Year Ended December 31
1. Book/adjusted carrying value of bonds and stocks, December 31 of prior year	311,064,048	313,107,531
2. Cost of bonds and stocks acquired	64,812,532	93,190,892
3. Accrual of discount	108,125	150,250
4. Unrealized valuation increase (decrease)	236,218	(222,435)
5. Total gain (loss) on disposals	716,651	3,134,657
6. Deduct consideration for bonds and stocks disposed of	55,396,938	95,455,892
7. Deduct amortization of premium	2,352,500	2,843,424
8. Total foreign exchange change in book/adjusted carrying value		
9. Deduct current year's other than temporary impairment recognized		
10. Total investment income recognized as a result of prepayment penalties and/or acceleration fees	212,192	2,469
11. Book/adjusted carrying value at end of current period (Lines 1+2+3+4+5-6-7+8-9+10)	319,400,328	311,064,048
12. Deduct total nonadmitted amounts		
13. Statement value at end of current period (Line 11 minus Line 12)	319,400,328	311,064,048

STATEMENT AS OF SEPTEMBER 30, 2021 OF THE Empire HealthChoice HMO, Inc.

SCHEDULE D - PART 1B

Showing the Acquisitions, Dispositions and Non-Trading Activity
During the Current Quarter for all Bonds and Preferred Stock by NAIC Designation

NAIC Designation	1 Book/Adjusted Carrying Value Beginning of Current Quarter	2 Acquisitions During Current Quarter	3 Dispositions During Current Quarter	4 Non-Trading Activity During Current Quarter	5 Book/Adjusted Carrying Value End of First Quarter	6 Book/Adjusted Carrying Value End of Second Quarter	7 Book/Adjusted Carrying Value End of Third Quarter	8 Book/Adjusted Carrying Value December 31 Prior Year
BONDS								
1. NAIC 1 (a)	213,525,073	8,144,464	8,520,341	(191,335)	210,298,360	213,525,073	212,957,861	205,511,955
2. NAIC 2 (a)	96,120,066	8,183,008	5,855,898	(542,095)	99,581,757	96,120,066	97,905,081	96,939,744
3. NAIC 3 (a)	5,744,443	121,049	23,600	963	6,583,095	5,744,443	5,842,855	8,083,222
4. NAIC 4 (a)	0	2,393,628	142,115	(4,489)	0	0	2,247,024	
5. NAIC 5 (a)	471,967	0	25,335	875	514,089	471,967	447,507	529,127
6. NAIC 6 (a)	0				0	0	0	
7. Total Bonds	315,861,549	18,842,149	14,567,289	(736,081)	316,977,301	315,861,549	319,400,328	311,064,048
PREFERRED STOCK								
8. NAIC 1	0				0	0	0	0
9. NAIC 2	0				0	0	0	0
10. NAIC 3	0				0	0	0	0
11. NAIC 4	0				0	0	0	0
12. NAIC 5	0				0	0	0	0
13. NAIC 6	0				0	0	0	0
14. Total Preferred Stock	0	0	0	0	0	0	0	0
15. Total Bonds and Preferred Stock	315,861,549	18,842,149	14,567,289	(736,081)	316,977,301	315,861,549	319,400,328	311,064,048

(a) Book/Adjusted Carrying Value column for the end of the current reporting period includes the following amount of short-term and cash equivalent bonds by NAIC designation:

NAIC 1 \$; NAIC 2 \$; NAIC 3 \$ NAIC 4 \$; NAIC 5 \$; NAIC 6 \$

S102

Schedule DA - Part 1 - Short-Term Investments

N O N E

Schedule DA - Verification - Short-Term Investments

N O N E

Schedule DB - Part A - Verification - Options, Caps, Floors, Collars, Swaps and Forwards

N O N E

Schedule DB - Part B - Verification - Futures Contracts

N O N E

Schedule DB - Part C - Section 1 - Replication (Synthetic Asset) Transactions (RSATs) Open

N O N E

Schedule DB-Part C-Section 2-Reconciliation of Replication (Synthetic Asset) Transactions Open

N O N E

Schedule DB - Verification - Book/Adjusted Carrying Value, Fair Value and Potential Exposure of
Derivatives

N O N E

SCHEDULE E - PART 2 - VERIFICATION

(Cash Equivalents)

	1	2
	Year To Date	Prior Year Ended December 31
1. Book/adjusted carrying value, December 31 of prior year	15,000,000	
2. Cost of cash equivalents acquired	89,000,001	255,000,000
3. Accrual of discount		
4. Unrealized valuation increase (decrease)		
5. Total gain (loss) on disposals		(19,992)
6. Deduct consideration received on disposals	104,000,001	239,980,008
7. Deduct amortization of premium		
8. Total foreign exchange change in book/adjusted carrying value		
9. Deduct current year's other than temporary impairment recognized		
10. Book/adjusted carrying value at end of current period (Lines 1+2+3+4+5-6-7+8-9)	0	15,000,000
11. Deduct total nonadmitted amounts		
12. Statement value at end of current period (Line 10 minus Line 11)	0	15,000,000

Schedule A - Part 2 - Real Estate Acquired and Additions Made

N O N E

Schedule A - Part 3 - Real Estate Disposed

N O N E

Schedule B - Part 2 - Mortgage Loans Acquired and Additions Made

N O N E

Schedule B - Part 3 - Mortgage Loans Disposed, Transferred or Repaid

N O N E

Schedule BA - Part 2 - Other Long-Term Invested Assets Acquired and Additions Made

N O N E

Schedule BA - Part 3 - Other Long-Term Invested Assets Disposed, Transferred or Repaid

N O N E

STATEMENT AS OF SEPTEMBER 30, 2021 OF THE Empire HealthChoice HMO, Inc.

SCHEDULE D - PART 3

Show All Long-Term Bonds and Stock Acquired During the Current Quarter

1	2	3	4	5	6	7	8	9	10
CUSIP Identification	Description	Foreign	Date Acquired	Name of Vendor	Number of Shares of Stock	Actual Cost	Par Value	Paid for Accrued Interest and Dividends	NAIC Designation, NAIC Designation Modifier and SVO Administrative Symbol
011842-US-8	ALASKA ST INTERNATIONAL APRTSR SERIES C 5.000% 10/01/29		.08/13/2021	RBC DOMINION SECURITIES		651,565	500,000	.0	1.E FE
30711X-JX-3	FANNIE MAE CAS SERIES 2017-C03 CLASS 1M2 3.086% 10/25/29		.07/21/2021	J P Morgan		1,236,800	1,203,333	2,893	1.D
30711X-NX-8	FANNIE MAE CAS SERIES 2017-C05 CLASS 1M2 2.286% 01/25/30		.07/21/2021	Barclays		339,218	332,363	.592	1.D
35563W-AH-7	FREDDIE MAC STACR SERIES 2018-DNA3 CLASS M2 144A 2.186% 09/25/48		.07/22/2021	NOMURA SEC INTERNATIONAL INC		749,070	738,000	.0	4.B FM
35564A-AK-7	FREDDIE MAC STACR SERIES 2018-HP2 CLASS M2 144A 1.336% 02/25/47		.07/21/2021	Wells Fargo		336,918	336,287	.351	1.G FE
35564T-AH-3	FREDDIE MAC STACR SERIES 2019-DNA3 CLASS M2 144A 2.136% 07/25/49		.07/21/2021	Wells Fargo		390,999	387,127	.645	4.B FM
35565A-AH-3	FREDDIE MAC STACR SERIES 2019-DNA4 CLASS M2 144A 2.036% 10/25/49		.07/22/2021	NOMURA SEC INTERNATIONAL INC		109,083	108,540	.0	3.B FM
35565A-AH-3	FREDDIE MAC STACR SERIES 2019-DNA4 CLASS M2 144A 2.039% 10/25/49		.07/22/2021	NOMURA SEC INTERNATIONAL INC		11,967	11,907	.0	3.B FM
35565K-AH-1	FREDDIE MAC STACR SERIES 2020-DNA2 CLASS M2 144A 1.936% 02/25/50		.07/21/2021	Wells Fargo		1,253,559	1,245,000	1,880	4.B FM
3199999. Subtotal - Bonds - U.S. Special Revenues						5,079,179	4,862,557	6,361	XXX
025286-AD-7	AMERICAN CREDIT ACCEPTANCE RE SERIES 2021-3 CLASS D 144A 1.340% 11/15/27		.07/19/2021	Wells Fargo		454,892	455,000	.0	2.B FE
03882K-AU-6	ARBOR MULTIFAMILY MORTGAGE SE SERIES 2021-1M3 CLASS AS 144A 2.748% 10/15/54		.09/27/2021	J P Morgan		566,496	550,000	.504	1.A FE
05377R-DL-5	AVIS BUDGET RENTAL CAR FUNDIN SERIES 2019-2A CLASS A 144A 3.340% 09/22/25		.09/30/2021	Bank of America		213,195	200,000	.261	1.A FE
05609J-AA-0	BXHP TRUST SERIES 2021-FILM CLASS A 144A 0.734% 08/15/36		.08/17/2021	Barclays		290,000	290,000	.0	1.A FE
16412X-AK-1	CHENIERE CORP CHRISTI HD SERIES 144A 2.742% 12/31/39		.08/17/2021	Various		485,298	485,000	.0	2.C FE
23331A-B0-1	D R HORTON INC 1.300% 10/15/26		.07/29/2021	THE BANK OF NEW YORK MELLON		1,813,530	1,815,000	.0	2.B FE
262104-AF-9	DRIVE AUTO RECEIVABLES TRUST SERIES 2021-2 CLASS D 1.390% 03/15/29		.08/17/2021	Salomon Bros		719,907	720,000	.0	2.C FE
262108-AF-0	DRIVE AUTO RECEIVABLES TRUST SERIES 2021-1 CLASS D 1.450% 01/16/29		.07/06/2021	RBC DOMINION SECURITIES		55,423	55,000	.51	2.B FE
29365T-AL-8	ENTERGY TEXAS INC 1.500% 09/01/26		.08/11/2021	Carmona Motley & Co. Inc		768,175	770,000	.0	2.A FE
33767T-AC-4	FIRSTKEY HOMES 2020 SFR1 TRUST SERIES 2021-SFR2 CLASS B 144A 1.607% 09/17/26		.08/11/2021	Morgan Stanley		895,000	895,000	.0	1.D FE
33767W-AC-7	FIRSTKEY HOMES 2020 SFR1 TRUST SERIES 2021-SFR1 CLASS B 144A 2.085% 08/17/28		.09/09/2021	Barclays		121,191	120,000	.72	1.C FE
36262C-AB-6	GS MORTGAGE BACKED SECURITIES SERIES 2021-PJ7 CLASS A2 144A 2.500% 01/25/52		.07/20/2021	Goldman Sachs & Co		814,250	800,000	1,611	1.A FE
36263L-AG-4	GLS AUTO RECEIVABLES TRUST SERIES 2021-3A CLASS D 144A 1.480% 07/15/27		.09/14/2021	Wells Fargo		1,074,652	1,075,000	.0	2.C FE
44891A-BZ-9	HYUNDAI CAPITAL AMERICA SERIES 144A 1.650% 09/17/26		.09/14/2021	Carmona Motley & Co. Inc		944,594	945,000	.0	2.A FE
75951A-AQ-1	RELIANCE STAND LIFE II SERIES 144A 1.512% 09/28/26		.09/21/2021	Wells Fargo		940,000	940,000	.0	1.F FE
92343V-EU-4	VERIZON COMMUNICATIONS SERIES WI 4.016% 12/03/29		.09/15/2021	Various		604,965	525,000	5,714	2.A FE
380881-FC-1	GOLDEN CREDIT CARD TRUST SERIES 2021-1A CLASS B 144A 1.440% 08/15/28	A.	.08/25/2021	RBC DOMINION SECURITIES		534,830	535,000	.0	1.F FE
606822-BW-3	MITSUBISHI UFJ FIN GRP 0.953% 07/19/25	D.	.07/12/2021	Carmona Motley & Co. Inc		1,205,000	1,205,000	.0	1.G FE
69832A-AB-2	PANASONIC CORP SERIES 144A 2.679% 07/19/24	D.	.09/09/2021	Morgan Stanley		1,261,572	1,200,000	4,822	2.A FE
3899999. Subtotal - Bonds - Industrial and Miscellaneous (Unaffiliated)						13,762,970	13,580,000	13,035	XXX
8399997. Total - Bonds - Part 3						18,842,149	18,442,557	19,396	XXX
8399998. Total - Bonds - Part 5						XXX	XXX	XXX	XXX
8399999. Total - Bonds						18,842,149	18,442,557	19,396	XXX
8999997. Total - Preferred Stocks - Part 3						0	XXX	0	XXX
8999998. Total - Preferred Stocks - Part 5						XXX	XXX	XXX	XXX
8999999. Total - Preferred Stocks						0	XXX	0	XXX
9799997. Total - Common Stocks - Part 3						0	XXX	0	XXX
9799998. Total - Common Stocks - Part 5						XXX	XXX	XXX	XXX
9799999. Total - Common Stocks						0	XXX	0	XXX
9899999. Total - Preferred and Common Stocks						0	XXX	0	XXX
9999999 - Totals						18,842,149	18,442,557	19,396	XXX

E04

STATEMENT AS OF SEPTEMBER 30, 2021 OF THE Empire HealthChoice HMO, Inc.

SCHEDULE D - PART 4

Show All Long-Term Bonds and Stock Sold, Redeemed or Otherwise Disposed of During the Current Quarter

1	2	3	4	5	6	7	8	9	10	Change In Book/Adjusted Carrying Value					16	17	18	19	20	21	22
										11	12	13	14	15							
CUSIP Identification	Description	Foreign	Disposal Date	Name of Purchaser	Number of Shares of Stock	Consideration	Par Value	Actual Cost	Prior Year Book/Adjusted Carrying Value	Unrealized Valuation Increase/(Decrease)	Current Year's (Amortization)/Accretion	Current Year's Other Than Temporary Impairment Recognized	Total Change in Book/Adjusted Carrying Value (11 + 12 - 13)	Total Foreign Exchange Change in Book /Adjusted Carrying Value	Book/Adjusted Carrying Value at Disposal Date	Foreign Exchange Gain (Loss) on Disposal	Realized Gain (Loss) on Disposal	Total Gain (Loss) on Disposal	Bond Interest/Stock Dividends Received During Year	Stated Contractual Maturity Date	NAIC Designation, NAIC Designation Modifier and SVO Administrative Symbol
383820-4C-1	GOVERNMENT NATIONAL MORTGAGE SERIES 2021-77 CLASS BA 1.000% 07/20/50		08/03/2021	J P Morgan	393,666	393,666	393,605	390,776	0	0	92	0	92	0	390,868	0	2,798	2,798	1,039	07/20/2050	1.A
383820-4C-1	GOVERNMENT NATIONAL MORTGAGE SERIES 2021-77 CLASS BA 1.000% 07/20/50		08/01/2021	Paydown	11,235	11,235	11,155	0	0	81	0	81	0	11,235	0	0	0	24	07/20/2050	1.A	
383820-F7-0	GOVERNMENT NATIONAL MORTGAGE SERIES 2021-78 CLASS LA 1.000% 05/20/51		09/01/2021	Paydown	20,931	20,931	20,734	0	0	196	0	196	0	20,931	0	0	0	59	05/20/2051	1.A	
383820-QL-7	GOVERNMENT NATIONAL MORTGAGE SERIES 2021-83 CLASS CA 1.000% 05/20/51		09/01/2021	Paydown	65,596	65,596	65,160	0	0	436	0	436	0	65,596	0	0	0	178	05/20/2051	1.A	
38382T-HL-1	GOVERNMENT NATIONAL MORTGAGE SERIES 2021-87 CLASS EG 1.000% 05/20/51		08/04/2021	Cantor Fitzgerald & Co	457,703	457,703	458,473	455,661	0	0	96	0	96	0	455,757	0	1,945	1,945	1,248	05/20/2051	1.A
38382T-HL-1	GOVERNMENT NATIONAL MORTGAGE SERIES 2021-87 CLASS EG 1.000% 05/20/51		08/01/2021	Paydown	11,380	11,380	11,310	0	0	70	0	70	0	11,380	0	0	0	24	05/20/2051	1.A	
38382T-NQ-3	GOVERNMENT NATIONAL MORTGAGE SERIES 2021-91 CLASS MF 1.000% 05/20/51		09/01/2021	Paydown	19,320	19,320	19,214	0	0	106	0	106	0	19,320	0	0	0	49	05/20/2051	1.A	
0599999 Subtotal - Bonds - U.S. Governments						979,831	980,540	974,010	0	0	1,077	0	1,077	0	975,087	0	4,743	4,743	2,621	XXX	XXX
91087B-AM-2	UNITED MEXICAN STATES 2.659% 05/24/31	D	09/20/2021	Morgan Stanley		681,540	691,000	691,000	691,000	0	0	0	0	691,000	0	(9,460)	(9,460)	15,209	05/24/2031	2.B FE	
1099999 Subtotal - Bonds - All Other Governments						681,540	691,000	691,000	691,000	0	0	0	0	691,000	0	(9,460)	(9,460)	15,209	XXX	XXX	
154871-BT-3	CENTRAL PLAINS ENERGY PROJ 5.000% 09/01/21		09/01/2021	Maturity	900,000	900,000	988,578	907,379	0	(7,379)	0	(7,379)	0	900,000	0	0	0	45,000	09/01/2021	1.F FE	
196479-5U-9	COLORADO ST HSG & FIN AUTH SERIES H 4.250% 11/01/49		09/01/2021	Call	100,000	40,000	40,000	43,877	43,341	0	(223)	0	(223)	43,119	0	(3,119)	(3,119)	1,275	11/01/2049	1.E FE	
30711X-JX-3	FANNIE MAE CAS SERIES 2017-003 CLASS 1M2 3.086% 10/25/29		09/27/2021	Paydown	12,250	12,250	12,591	0	0	(341)	0	(341)	0	12,250	0	0	0	66	10/25/2029	1.D	
30711X-NX-8	FANNIE MAE CAS SERIES 2017-005 CLASS 1M2 2.286% 01/25/30		09/27/2021	Paydown	3,380	3,380	3,450	0	0	(70)	0	(70)	0	3,380	0	0	0	14	01/25/2030	1.D	
313686-HH-9	FANNIE MAE SERIES 2019-58 CLASS LP 3.000% 10/25/49		09/01/2021	Paydown	74,716	74,716	76,763	75,807	0	(1,091)	0	(1,091)	0	74,716	0	0	0	1,509	10/25/2049	1.A	
3137FN-BV-1	FREDDIE MAC SERIES 4908 CLASS BD 3.000% 04/25/49		09/01/2021	Paydown	41,907	41,907	43,255	42,330	0	(423)	0	(423)	0	41,907	0	0	0	808	04/25/2049	1.A	
313760-EH-5	FREDDIE MAC STACR SERIES 15-DNA1 CLASS M3 3.386% 10/25/27		09/27/2021	Paydown	150,637	150,637	152,561	122,224	0	(1,761)	0	(1,761)	0	150,637	0	0	0	3,266	10/25/2027	1.D	
313760-GH-3	FREDDIE MAC STACR SERIES 15-DNA3 CLASS M3 4.786% 04/25/28		09/27/2021	Paydown	115,540	115,540	120,249	0	0	(4,709)	0	(4,709)	0	115,540	0	0	0	3,599	04/25/2028	1.D	
3140FX-FR-8	FNMA POOL BF0175 2.500% 01/01/57		09/01/2021	Paydown	53,464	53,464	51,144	51,206	0	2,258	0	2,258	0	53,464	0	0	0	880	01/01/2057	1.A	
3140FX-GT-3	FNMA POOL BF0209 3.500% 02/01/42		09/01/2021	Paydown	31,201	31,201	31,562	31,547	0	(346)	0	(346)	0	31,201	0	0	0	731	02/01/2042	1.A	
3140HJ-JS-1	FNMA POOL BK4772 4.000% 08/01/48		09/01/2021	Paydown	54,374	54,374	58,605	0	0	(4,231)	0	(4,231)	0	54,374	0	0	0	877	08/01/2048	1.A	
35565A-AH-3	FREDDIE MAC STACR SERIES 2019-DNA4 CLASS M2 144A 2.036% 10/25/49		09/27/2021	Paydown	11,693	11,693	11,752	0	0	(58)	0	(58)	0	11,693	0	0	0	42	10/25/2049	3.B FM	
35565A-AH-3	FREDDIE MAC STACR SERIES 2019-DNA4 CLASS M2 144A 2.039% 10/25/49		08/25/2021	Paydown	11,907	11,907	11,967	0	0	(60)	0	(60)	0	11,907	0	0	0	20	10/25/2049	3.B FM	
35565K-AH-1	FREDDIE MAC STACR SERIES 2020-DNA2 CLASS M2 144A 1.936% 02/25/50		09/27/2021	Paydown	142,115	142,115	143,092	0	0	(977)	0	(977)	0	142,115	0	0	0	637	02/25/2050	4.B FM	
3199999 Subtotal - Bonds - U.S. Special Revenues						1,643,184	1,643,184	1,749,446	1,273,834	0	(19,411)	0	(19,411)	0	1,646,303	0	(3,119)	(3,119)	58,724	XXX	XXX
05905B-AG-9	BANC OF AMERICA ALT LN TR SERIES 2006-5 CLASS CB7 6.000% 06/25/46		09/01/2021	Paydown	25,335	26,789	16,503	26,073	0	717	(1,455)	0	(738)	0	25,335	0	0	0	1,050	06/25/2046	5.B FM
12530M-AA-3	CF HIPPOLYTA ISSUER LLC SERIES 2020-1 CLASS A1 144A 1.690% 07/15/60		09/23/2021	Goldman Sachs & Co	538,253	531,321	536,821	536,174	0	(767)	0	(767)	0	535,407	0	2,846	2,846	7,034	07/15/2060	1.D FE	
12530M-AA-3	CF HIPPOLYTA ISSUER LLC SERIES 2020-1 CLASS A1 144A 1.690% 07/15/60		08/16/2021	Paydown	6,486	6,486	6,561	5,332	0	(69)	0	(69)	0	6,486	0	0	0	60	07/15/2060	1.D FE	
12530M-AE-5	CF HIPPOLYTA ISSUER LLC SERIES 2021-1A CLASS A1 144A 1.479% 03/15/61		08/15/2021	Paydown	4,599	4,599	4,609	0	0	(11)	0	(11)	0	4,599	0	0	0	23	03/15/2061	1.D FE	
126650-BP-4	CVS/CAREMARK CORP 6.036% 12/10/28		09/10/2021	Redemption	100,000	8,641	8,641	9,664	9,329	0	(45)	0	(45)	9,284	0	(643)	(643)	348	12/10/2028	2.B	

E05

STATEMENT AS OF SEPTEMBER 30, 2021 OF THE Empire HealthChoice HMO, Inc.

SCHEDULE D - PART 4

Show All Long-Term Bonds and Stock Sold, Redeemed or Otherwise Disposed of During the Current Quarter

1	2	3	4	5	6	7	8	9	10	Change In Book/Adjusted Carrying Value					16	17	18	19	20	21	22	
										11	12	13	14	15								
CUSIP Identification	Description	Foreign	Disposal Date	Name of Purchaser	Number of Shares of Stock	Consideration	Par Value	Actual Cost	Prior Year Book/Adjusted Carrying Value	Unrealized Valuation Increase/(Decrease)	Current Year's (Amortization)/Accretion	Current Year's Other Than Temporary Impairment Recognized	Total Change in Book/Adjusted Carrying Value (11 + 12 - 13)	Total Foreign Exchange Change in Book /Adjusted Carrying Value	Book/Adjusted Carrying Value at Disposal Date	Foreign Exchange Gain (Loss) on Disposal	Realized Gain (Loss) on Disposal	Total Gain (Loss) on Disposal	Bond Interest/Stock Dividends Received During Year	Stated Contractual Maturity Date	NAIC Designation, NAIC Designation Modifier and SVO Administrative Symbol	
16163C-AH-5	CHASE MORTGAGE FINANCE CORP SERIES 2006-A1 CLASS 2A3 2.817% 09/25/36		09/01/2021	Paydown		63,027	65,196	31,580	43,016	0	20,011	0	20,011	0	63,027	0	0	0	1,419	09/25/2036	1.D FM	
231021-AT-3	CUMMINS INC 1.500% 09/01/30		07/08/2021	Bank of America		1,193,040	1,220,468	1,220,468	1,220,616	0	225	0	225	0	1,220,841	0	(27,801)	(27,801)	16,231	09/01/2030	1.F FE	
24736X-AA-6	DELTA AIR LINES SERIES 15-1 3.625% 01/30/29		07/30/2021	Redemption	100,000		18,300	18,300	18,300	0	0	0	0	0	18,300	0	0	0	663	01/30/2029	1.F FE	
26442E-AH-3	DUKE ENERGY OHIO INC 2.125% 06/01/30		07/27/2021	Scotia Capital		620,102	610,000	609,616	609,639	0	20	0	20	0	609,659	0	10,443	10,443	8,570	06/01/2030	1.F FE	
30037D-AA-3	EVERGY METRO SERIES 2020 2.250% 06/01/30		07/27/2021	Wells Fargo		747,526	725,000	724,159	724,205	0	44	0	44	0	724,249	0	23,276	23,276	10,784	06/01/2030	1.F FE	
36261H-AJ-9	GS MORTGAGE BACKED SECURITIES SERIES 2021-PJ5 CLASS A8 144A 2.500% 10/25/51		09/01/2021	Paydown		5,943	5,943	6,081	0	0	(137)	0	(137)	0	5,943	0	0	0	39	10/25/2051	1.A FE	
36262C-AB-6	GS MORTGAGE BACKED SECURITIES SERIES 2021-PJ7 CLASS A2 144A 2.500% 01/25/52		09/01/2021	Paydown		13,021	13,021	13,253	0	0	(232)	0	(232)	0	13,021	0	0	0	41	01/25/2052	1.A FE	
368306-AA-4	GB TRUST 2020 FLIX SERIES 2020-FLIX CLASS A 144A 1.175% 08/25/37		08/16/2021	Paydown		530,000	530,000	530,000	530,000	0	0	0	0	0	530,000	0	0	0	4,403	08/25/2037	1.D FM	
41975A-AA-0	HAWAII HOTEL TRUST 2019 MAUI SERIES 2019-MAUI CLASS A 144A 1.234% 05/15/38		09/30/2021	J P Morgan		456,937	455,000	455,853	454,883	0	434	0	434	0	455,317	0	1,620	1,620	3,185	05/15/2038	1.D FM	
42806D-AU-3	HERTZ VEHICLE FINANCING LLC SERIES 16-2A CLASS A 144A 2.950% 03/25/22		09/30/2021	Paydown		122,831	122,831	122,804	122,831	0	1	0	1	0	122,831	0	0	0	1,862	03/25/2022	1.F FE	
45866F-AN-4	INTERCONTINENTALEXCHANGE 1.850% 09/15/32		07/08/2021	Morgan Stanley		1,188,441	1,235,000	1,229,554	1,229,703	0	222	0	222	0	1,229,924	0	(41,484)	(41,484)	20,436	09/15/2032	2.A FE	
46592N-AF-3	JP MORGAN MORTGAGE TRUST SERIES 2021-7 CLASS A4 144A 2.500% 11/25/51		09/01/2021	Paydown		27,103	27,103	27,789	0	0	(686)	0	(686)	0	27,103	0	0	0	163	11/25/2051	1.A FE	
46653P-AF-4	JP MORGAN MORTGAGE TRUST SERIES 2021-6 CLASS A4 144A 2.500% 10/25/51		09/01/2021	Paydown		21,499	21,499	22,094	0	0	(595)	0	(595)	0	21,499	0	0	0	194	10/25/2051	1.A FE	
55539T-AB-7	MVW OWNER TRUST SERIES 2021-11A CLASS B 144A 1.440% 01/22/41		09/20/2021	Paydown		31,437	31,437	31,430	0	0	7	0	7	0	31,437	0	0	0	114	01/22/2041	1.F FE	
576434-NU-4	MASTER ALTERNATIVE LOANS TRUST SERIES 2004-3 CLASS 1A1 5.000% 01/01/22		09/01/2021	Paydown		0	0	0	0	0	0	0	0	0	0	0	0	0	0	01/01/2022	1.D FM	
63941X-AA-5	NAVIENT STUDENT LOAN TRUST SERIES 2020-FA CLASS A 144A 1.220% 07/15/69		09/15/2021	Paydown		20,613	20,613	20,845	0	0	(232)	0	(232)	0	20,613	0	0	0	146	07/15/2069	1.A FE	
759509-AG-7	RELIANCE STEEL & ALUM 2.150% 08/15/30		07/27/2021	MarketAxess Corporation		878,346	880,000	877,554	877,646	0	129	0	129	0	877,775	0	571	571	18,710	08/15/2030	2.B FE	
797440-BN-3	SAN DIEGO G & E 3.000% 08/15/21		08/15/2021	Maturity		400,000	400,000	392,656	399,353	0	647	0	647	0	400,000	0	0	0	12,000	08/15/2021	1.F FE	
81748W-AA-4	SEQUOIA MORTGAGE TRUST SERIES 2021-4 CLASS A1 144A 2.500% 06/25/51		07/20/2021	Wells Fargo		1,207,147	1,178,243	1,199,231	0	0	(217)	0	(217)	0	1,199,014	0	8,133	8,133	6,628	06/25/2051	1.A FE	
81748W-AA-4	SEQUOIA MORTGAGE TRUST SERIES 2021-4 CLASS A1 144A 2.500% 06/25/51		07/01/2021	Paydown		3,515	3,515	3,578	0	0	(63)	0	(63)	0	3,515	0	0	0	15	06/25/2051	1.A FE	
817826-AE-0	7 ELEVEN INC SERIES 144A 1.800% 02/10/31		07/08/2021	Carmona Motley & Co. Inc		823,429	850,000	849,533	0	0	18	0	18	0	849,551	0	(26,122)	(26,122)	6,460	02/10/2031	2.B FE	
826525-AA-5	SIERRA RECEIVABLES FUNDING CO SERIES 2020-2A CLASS A 144A 1.330% 07/20/37		09/20/2021	Paydown		25,596	25,596	25,591	25,591	0	5	0	5	0	25,596	0	0	0	226	07/20/2037	1.A FE	
85208N-AA-8	SPRINT SPECTRUM SPEC I SERIES A-1 3.360% 09/20/21		08/20/2021	Call 100,000		51,250	51,250	51,601	51,303	0	(44)	0	(44)	0	51,259	0	(9)	(9)	1,148	09/20/2021	2.A FE	
90931G-AA-7	UNITED AIR 2020 1 A PTT SERIES 20-1 5.875% 04/15/29		07/15/2021	Redemption 100,000		23,812	23,812	26,424	0	0	(214)	0	(214)	0	26,210	0	(2,398)	(2,398)	700	04/15/2029	1.G FE	
95284B-AF-5	MEXICHEM SAB DE CV SERIES 144A 4.000% 10/04/27	D	09/20/2021	Barclays		1,039,300	950,000	945,552	946,803	0	302	0	302	0	947,105	0	92,195	92,195	36,733	10/04/2027	2.C FE	
69832A-AA-4	PANASONIC CORP SERIES 144A 2.536% 07/19/22	D	09/09/2021	RBC DOMINION SECURITIES		1,218,982	1,200,000	1,200,000	1,200,000	0	0	0	0	0	1,200,000	0	18,986	18,986	34,997	07/19/2022	2.A FE	
3899999	Subtotal - Bonds - Industrial and Miscellaneous (Unaffiliated)					11,314,511	11,246,195	11,209,704	9,030,797	717	17,298	0	18,015	0	11,254,900	0	59,613	59,613	194,382	XXX	XXX	
8399997	Total - Bonds - Part 4					14,619,066	14,560,919	14,624,160	10,995,631	717	(1,036)	0	(319)	0	14,567,290	0	51,777	51,777	270,936	XXX	XXX	
8399998	Total - Bonds - Part 5					XXX	XXX	XXX	XXX	XXX	XXX	XXX	XXX	XXX	XXX	XXX	XXX	XXX	XXX	XXX	XXX	XXX
8399999	Total - Bonds					14,619,066	14,560,919	14,624,160	10,995,631	717	(1,036)	0	(319)	0	14,567,290	0	51,777	51,777	270,936	XXX	XXX	
8999997	Total - Preferred Stocks - Part 4					0	XXX	0	0	0	0	0	0	0	0	0	0	0	0	0	XXX	XXX

E05.1

STATEMENT AS OF SEPTEMBER 30, 2021 OF THE Empire HealthChoice HMO, Inc.

SCHEDULE D - PART 4

Show All Long-Term Bonds and Stock Sold, Redeemed or Otherwise Disposed of During the Current Quarter

1	2	3	4	5	6	7	8	9	10	Change In Book/Adjusted Carrying Value					16	17	18	19	20	21	22	
										11	12	13	14	15								
CUSIP Identification	Description	Foreign	Disposal Date	Name of Purchaser	Number of Shares of Stock	Consideration	Par Value	Actual Cost	Prior Year Book/Adjusted Carrying Value	Unrealized Valuation Increase/(Decrease)	Current Year's (Amortization)/Accretion	Other Than Temporary Impairment Recognized	Total Change in Book/Adjusted Carrying Value (11 + 12 - 13)	Total Foreign Exchange Change in Book /Adjusted Carrying Value	Book/Adjusted Carrying Value at Disposal Date	Foreign Exchange Gain (Loss) on Disposal	Realized Gain (Loss) on Disposal	Total Gain (Loss) on Disposal	Bond Interest/Stock Dividends Received During Year	Stated Contractual Maturity Date	NAIC Designation, NAIC Designation Modifier and SVO Administrative Symbol	
8999998. Total - Preferred Stocks - Part 5						XXX	XXX	XXX	XXX	XXX	XXX	XXX	XXX	XXX	XXX	XXX	XXX	XXX	XXX	XXX	XXX	XXX
8999999. Total - Preferred Stocks						0	XXX	0	0	0	0	0	0	0	0	0	0	0	0	0	XXX	XXX
9799997. Total - Common Stocks - Part 4						0	XXX	0	0	0	0	0	0	0	0	0	0	0	0	0	XXX	XXX
9799998. Total - Common Stocks - Part 5						XXX	XXX	XXX	XXX	XXX	XXX	XXX	XXX	XXX	XXX	XXX	XXX	XXX	XXX	XXX	XXX	XXX
9799999. Total - Common Stocks						0	XXX	0	0	0	0	0	0	0	0	0	0	0	0	0	XXX	XXX
9899999. Total - Preferred and Common Stocks						0	XXX	0	0	0	0	0	0	0	0	0	0	0	0	0	XXX	XXX
9999999 - Totals						14,619,066	XXX	14,624,160	10,995,631	717	(1,036)	0	(319)	0	14,567,290	0	51,777	51,777	270,936	XXX	XXX	

Schedule DB - Part A - Section 1 - Options, Caps, Floors, Collars, Swaps and Forwards Open

N O N E

Schedule DB - Part B - Section 1 - Futures Contracts Open

N O N E

Schedule DB - Part B - Section 1B - Brokers with whom cash deposits have been made

N O N E

Schedule DB - Part D - Section 1 - Counterparty Exposure for Derivative Instruments Open

N O N E

Schedule DB - Part D-Section 2 - Collateral for Derivative Instruments Open - Pledged By

N O N E

Schedule DB - Part D-Section 2 - Collateral for Derivative Instruments Open - Pledged To

N O N E

Schedule DB - Part E - Derivatives Hedging Variable Annuity Guarantees

N O N E

SCHEDULE DL - PART 1
SECURITIES LENDING COLLATERAL ASSETS

Reinvested Collateral Assets Owned Current Statement Date

(Securities lending collateral assets reported in aggregate on Line 10 of the Assets page and not included on Schedules A, B, BA, D, DB and E)

1	2	3	4	5	6	7
CUSIP Identification	Description	Code	NAIC Designation, NAIC Designation Modifier and SVO Administrative Symbol	Fair Value	Book/Adjusted Carrying Value	Maturity Date
0599999	Total - U.S. Government Bonds			0	0	XXX
1099999	Total - All Other Government Bonds			0	0	XXX
1799999	Total - U.S. States, Territories and Possessions Bonds			0	0	XXX
2499999	Total - U.S. Political Subdivisions Bonds			0	0	XXX
3199999	Total - U.S. Special Revenues Bonds			0	0	XXX
3899999	Total - Industrial and Miscellaneous (Unaffiliated) Bonds			0	0	XXX
4899999	Total - Hybrid Securities			0	0	XXX
5599999	Total - Parent, Subsidiaries and Affiliates Bonds			0	0	XXX
5999999	Subtotal - SVO Identified Funds			0	0	XXX
6299999	Subtotal - Unaffiliated Bank Loans			0	0	XXX
6399999	Total - Issuer Obligations			0	0	XXX
6499999	Total - Residential Mortgage-Backed Securities			0	0	XXX
6599999	Total - Commercial Mortgage-Backed Securities			0	0	XXX
6699999	Total - Other Loan-Backed and Structured Securities			0	0	XXX
6799999	Total - SVO Identified Funds			0	0	XXX
6899999	Total - Affiliated Bank Loans			0	0	XXX
6999999	Total - Unaffiliated Bank Loans			0	0	XXX
7099999	Total Bonds			0	0	XXX
7399999	Total - Preferred Stocks (Schedule D, Part 2, Section 1 type)			0	0	XXX
7999999	Total - Common Stocks (Schedule D, Part 2, Section 2 type)			0	0	XXX
8099999	Total - Preferred and Common Stocks			0	0	XXX
000000-00-0	SALISBURY RECEIVABLES COMPANY LLC		1.E	251,512	251,437	10/07/2021
000000-00-0	MORGAN STANLEY		1.E	553,342	553,342	01/03/2022
000000-00-0	MORGAN STANLEY		1.E	754,557	754,557	03/30/2022
000000-00-0	UBS AG LONDON		1.D	351,800	351,488	03/30/2022
8999999	Total - Short-Term Invested Assets (Schedule DA type)			1,911,211	1,910,824	XXX
000000-00-0	NORDEA BANK ABP, NEW YORK BRANCH			213,524	213,524	10/01/2021
000000-00-0	NATL BANK CANADA			251,519	251,519	10/07/2021
000000-00-0	NATL BANK CANADA			503,038	503,038	10/07/2021
000000-00-0	DBS BANK LIMITED, SINGAPORE			251,519	251,519	10/08/2021
000000-00-0	SHINKIN CENTRAL BANK			30,182	30,182	11/15/2021
000000-00-0	AGRIC BK OF CHINA LTD - NY BRANCH			150,920	150,911	11/22/2021
000000-00-0	SHINKIN CENTRAL BANK			472,856	472,856	11/22/2021
000000-00-0	UNITED OVERSEAS BANK LTD, NY			261,580	261,580	12/02/2021
000000-00-0	AGRIC BK OF CHINA LTD - NY BRANCH			251,534	251,519	11/23/2021
000000-00-0	SHINKIN CENTRAL BANK			352,126	352,126	10/19/2021
000000-00-0	Mitsubishi UFJ Trust & Bank Co			251,479	251,430	11/15/2021
000000-00-0	MUFG Bank Ltd, London Branch			201,215	201,215	01/10/2022
000000-00-0	CIC LONDON			251,509	251,407	10/12/2021
000000-00-0	MUFG Bank Ltd, New York Branch			251,526	251,519	01/11/2022
000000-00-0	SUMITOMO BK NY			301,830	301,823	12/17/2021
000000-00-0	MIZUHO BANK LIMITED NEW YORK			251,507	251,519	03/25/2022
000000-00-0	STANDARD CHARTERED NY			201,215	201,215	02/02/2022
000000-00-0	SOCIETE GENERALE NEW YORK			251,507	251,519	03/15/2022
000000-00-0	SUMITOMO BK NY			251,497	251,519	03/15/2022
000000-00-0	SUMITOMO MITSUI TRUST BANK LTD, LDN			201,050	201,042	03/21/2022
000000-00-0	SUMITOMO MITSUI TRUST BANK LTD, LDN			523,123	522,575	10/20/2021
000000-00-0	BANK OF MONTREAL CHICAGO			653,937	653,949	12/01/2021
000000-00-0	TORONTO DOMINION NY			100,608	100,608	12/09/2021
000000-00-0	GOLDMAN SACHS BANK USA			392,397	392,369	02/04/2022
000000-00-0	CIBC NY			120,729	120,729	01/24/2022
000000-00-0	NATIONAL AUSTRALIA BANK LONDON			150,904	150,911	03/02/2022
000000-00-0	BARCLAYS NEW YORK			553,659	553,342	04/07/2022
000000-00-0	RABOBANK LONDON			503,038	503,038	03/18/2022
000000-00-0	NORDEA BANK ABP, NEW YORK BRANCH			110,670	110,666	10/07/2021
000000-00-0	ROYAL BANK OF CANADA			251,563	251,519	12/02/2021
9099999	Total - Cash (Schedule E Part 1 type)			8,513,761	8,512,688	XXX
018616-74-8	ALLIANCE BERNSTEIN GOVT FD		1.A	7,116	7,116	10/01/2021
261908-10-7	DREYFUS TREASURY & AGENCY LEX		1.A	20,122	20,122	10/01/2021
61747C-70-7	MS GOVT US LEX		1.A	270,309	270,309	10/01/2021
	BOFA SECURITIES, INC		1.E	422,552	422,552	10/01/2021
	ING BANK NV, LONDON BRANCH		1.E	106,644	106,644	10/01/2021
	ING BANK NV, LONDON BRANCH		1.E	1,501,065	1,501,065	10/01/2021
	METROPOLITAN LIFE INSURANCE COMPANY		1.E	321,944	321,944	10/01/2021
	NATWEST MARKETS SECURITIES INC		1.G	230,802	230,802	10/01/2021
	TD PRIME SVCS		1.E	1,006,076	1,006,076	10/01/2021
	BANK OF MONTREAL, LONDON SMI USD		1.C	311,883	311,883	10/01/2021
	NATIXIS FINANCIAL PRODUCTS LLC		1.E	191,154	191,307	10/01/2021
	UNITED OF OMAHA LIFE INSURANCE		1.E	263,592	263,592	11/01/2021
	UNITED OF OMAHA LIFE INSURANCE		1.E	100,608	100,608	11/01/2021
	UNITED OF OMAHA LIFE INSURANCE		1.E	30,182	30,182	11/01/2021
	BANK OF MONTREAL, LONDON SMI USD		1.C	1,006,076	1,006,076	11/04/2021
	BANK OF MONTREAL, LONDON SMI USD		1.C	214,294	214,294	11/04/2021
	ING BANK NV, LONDON BRANCH		1.E	402,430	402,430	11/04/2021
	ING BANK NV, LONDON BRANCH		1.E	251,519	251,519	11/04/2021
	ING FINANCIAL MARKETS LLC RPEQ		1.E	251,519	251,519	11/04/2021
	NATIXIS FINANCIAL PRODUCTS LLC		1.E	150,911	150,911	11/04/2021
	ROYAL BANK CANADA TORONTO		1.C	754,557	754,557	11/04/2021
	ROYAL BANK CANADA TORONTO		1.C	503,038	503,038	11/04/2021
	ROYAL BANK CANADA TORONTO		1.C	503,038	503,038	11/04/2021
	ROYAL BANK CANADA TORONTO		1.C	754,557	754,557	11/04/2021
	ROYAL BANK CANADA TORONTO		1.C	402,430	402,427	11/04/2021
9199999	Total - Cash Equivalents (Schedule E Part 2 type)			9,978,418	9,978,568	XXX
9999999	Totals			20,403,390	20,402,080	XXX

General Interrogatories:

- Total activity for the year Fair Value \$10,020,735 Book/Adjusted Carrying Value \$10,019,491
- Average balance for the year Fair Value \$14,531,497 Book/Adjusted Carrying Value \$14,530,899
- Reinvested securities lending collateral assets book/adjusted carrying value included in this schedule by NAIC designation:
 NAIC 1 \$20,402,080 NAIC 2 \$0 NAIC 3 \$ NAIC 4 \$ NAIC 5 \$ NAIC 6 \$

**SCHEDULE DL - PART 2
SECURITIES LENDING COLLATERAL ASSETS**

Reinvested Collateral Assets Owned Current Statement Date

(Securities lending collateral assets included on Schedules A, B, BA, D, DB and E and not reported in aggregate on Line 10 of the Assets page)

1	2	3	4	5	6	7
CUSIP Identification	Description	Code	NAIC Designation, NAIC Designation Modifier and SVO Administrative Symbol	Fair Value	Book/Adjusted Carrying Value	Maturity Date
NONE						
9999999 - Totals						XXX

General Interrogatories:

- | | | |
|---------------------------------|---------------------|---------------------------------------|
| 1. Total activity for the year | Fair Value \$ | Book/Adjusted Carrying Value \$ |
| 2. Average balance for the year | Fair Value \$ | Book/Adjusted Carrying Value \$ |

SCHEDULE E - PART 1 - CASH

Month End Depository Balances

1 Depository	2 Code	3 Rate of Interest	4 Amount of Interest Received During Current Quarter	5 Amount of Interest Accrued at Current Statement Date	Book Balance at End of Each Month During Current Quarter			9 *
					6 First Month	7 Second Month	8 Third Month	
Bank of America 101 S. Tryon Street, 19th Floor, Charlotte, NC 28255		0.000	0	0	4,495,669	3,723,737	3,854,070	.XXX
JP Morgan Chase 4 New York Plaza, 13th Floor, New York, NY 10004		0.000	0	0	13,415,069	6,143,792	6,337,721	.XXX
0199998. Deposits in ... depositories that do not exceed the allowable limit in any one depository (See instructions) - Open Depositories	XXX	XXX						XXX
0199999. Totals - Open Depositories	XXX	XXX	0	0	17,910,738	9,867,529	10,191,791	XXX
0299998. Deposits in ... depositories that do not exceed the allowable limit in any one depository (See instructions) - Suspended Depositories	XXX	XXX						XXX
0299999. Totals - Suspended Depositories	XXX	XXX	0	0	0	0	0	XXX
0399999. Total Cash on Deposit	XXX	XXX	0	0	17,910,738	9,867,529	10,191,791	XXX
0499999. Cash in Company's Office	XXX	XXX	XXX	XXX				XXX
0599999. Total - Cash	XXX	XXX	0	0	17,910,738	9,867,529	10,191,791	XXX

Schedule E - Part 2 - Cash Equivalents - Investments Owned End of Current Quarter

N O N E