



HEALTH QUARTERLY STATEMENT

AS OF SEPTEMBER 30, 2022
OF THE CONDITION AND AFFAIRS OF THE

AMH Health, LLC

NAIC Group Code 0671 (Current) NAIC Company Code 16553 Employer's ID Number 83-2435050 (Prior)

Organized under the Laws of Maine, State of Domicile or Port of Entry ME

Country of Domicile United States of America

Licensed as business type: Health Maintenance Organization

Is HMO Federally Qualified? Yes [] No [X]

Incorporated/Organized 11/02/2018 Commenced Business 04/12/2019

Statutory Home Office 2 Gannett Drive, South Portland, ME, US 04106
(Street and Number) (City or Town, State, Country and Zip Code)

Main Administrative Office 4425 Corporation Lane
(Street and Number)
Virginia Beach, VA, US 23462 (City or Town, State, Country and Zip Code)
757-473-2737 (Area Code) (Telephone Number)

Mail Address 4425 Corporation Lane, Virginia Beach, VA, US 23462
(Street and Number or P.O. Box) (City or Town, State, Country and Zip Code)

Primary Location of Books and Records 220 Virginia Avenue
(Street and Number)
Indianapolis, IN, US 46204 (City or Town, State, Country and Zip Code)
800-331-1476 (Area Code) (Telephone Number)

Internet Website Address www.elevancehealth.com

Statutory Statement Contact Leigh Barrett, 317-432-6988
(Name) (Area Code) (Telephone Number)
leigh.barrett@elevancehealth.com, 317-488-6200
(E-mail Address) (FAX Number)

OFFICERS

President and Chairperson Raul Guillermo Smith Treasurer Vincent Edward Scher
Secretary Kathleen Susan Kiefer Assistant Treasurer Eric Kenneth Noble

OTHER

DIRECTORS OR TRUSTEES

Aleksey Furman Kimberly Switlick-Prose # Scott Douglas Mills
Francis George McGinty Raul Guillermo Smith Albert Gratton Swallow
David Earl Warren

State of Indiana SS:
County of Johnson

The officers of this reporting entity being duly sworn, each depose and say that they are the described officers of said reporting entity, and that on the reporting period stated above, all of the herein described assets were the absolute property of the said reporting entity, free and clear from any liens or claims thereon, except as herein stated, and that this statement, together with related exhibits, schedules and explanations therein contained, annexed or referred to, is a full and true statement of all the assets and liabilities and of the condition and affairs of the said reporting entity as of the reporting period stated above, and of its income and deductions therefrom for the period ended, and have been completed in accordance with the NAIC Annual Statement Instructions and Accounting Practices and Procedures manual except to the extent that: (1) state law may differ; or, (2) that state rules or regulations require differences in reporting not related to accounting practices and procedures, according to the best of their information, knowledge and belief, respectively. Furthermore, the scope of this attestation by the described officers also includes the related corresponding electronic filing with the NAIC, when required, that is an exact copy (except for formatting differences due to electronic filing) of the enclosed statement. The electronic filing may be requested by various regulators in lieu of or in addition to the enclosed.

DocuSigned by: Smith, Raul Guillermo 1194C7E470154C8... Raul Guillermo Smith, President

DocuSigned by: Kathly Kiefer D85175EE05784B1... Kathleen Susan Kiefer, Secretary

DocuSigned by: Vincent E. Scher A85A33722D4143E... Vincent Edward Scher, Treasurer

Subscribed and sworn to before me this 10th day of November 2022
Rita F. Gentry
Rita F. Gentry
Executive Assistant
1/17/2029

- a. Is this an original filing? Yes [X] No []
- b. If no,
1. State the amendment number.....
 2. Date filed
 3. Number of pages attached.....

Rita F. Gentry
Notary Public
SEAL
Johnson County, State of Indiana
My Commission Expires January 17, 2029
Commission No: NP0641321

STATEMENT AS OF SEPTEMBER 30, 2022 OF THE AMH Health, LLC

ASSETS

	Current Statement Date			4 December 31 Prior Year Net Admitted Assets
	1 Assets	2 Nonadmitted Assets	3 Net Admitted Assets (Cols. 1 - 2)	
1. Bonds	50,991,101		50,991,101	27,016,024
2. Stocks:				
2.1 Preferred stocks			0	0
2.2 Common stocks	4,279,434		4,279,434	3,936,356
3. Mortgage loans on real estate:				
3.1 First liens			0	0
3.2 Other than first liens.....			0	0
4. Real estate:				
4.1 Properties occupied by the company (less \$ encumbrances)			0	0
4.2 Properties held for the production of income (less \$ encumbrances)			0	0
4.3 Properties held for sale (less \$ encumbrances)			0	0
5. Cash (\$56,418,475), cash equivalents (\$) and short-term investments (\$)	56,418,475		56,418,475	69,499,398
6. Contract loans (including \$ premium notes)			0	0
7. Derivatives			0	0
8. Other invested assets			0	0
9. Receivables for securities	347		347	0
10. Securities lending reinvested collateral assets	3,351,441		3,351,441	1,561,239
11. Aggregate write-ins for invested assets	0	0	0	0
12. Subtotals, cash and invested assets (Lines 1 to 11)	115,040,798	0	115,040,798	102,013,017
13. Title plants less \$ charged off (for Title insurers only)			0	0
14. Investment income due and accrued	159,453		159,453	7,210
15. Premiums and considerations:				
15.1 Uncollected premiums and agents' balances in the course of collection	576,910	117,550	459,360	143,480
15.2 Deferred premiums, agents' balances and installments booked but deferred and not yet due (including \$ earned but unbilled premiums)			0	0
15.3 Accrued retrospective premiums (\$) and contracts subject to redetermination (\$7,414,483)	7,414,483		7,414,483	4,378,372
16. Reinsurance:				
16.1 Amounts recoverable from reinsurers			0	0
16.2 Funds held by or deposited with reinsured companies			0	0
16.3 Other amounts receivable under reinsurance contracts			0	0
17. Amounts receivable relating to uninsured plans	4,589,739		4,589,739	3,446,916
18.1 Current federal and foreign income tax recoverable and interest thereon	698,545		698,545	465,757
18.2 Net deferred tax asset			0	232,786
19. Guaranty funds receivable or on deposit			0	0
20. Electronic data processing equipment and software			0	0
21. Furniture and equipment, including health care delivery assets (\$)			0	0
22. Net adjustment in assets and liabilities due to foreign exchange rates			0	0
23. Receivables from parent, subsidiaries and affiliates			0	0
24. Health care (\$2,684,974) and other amounts receivable	4,144,209	1,459,235	2,684,974	2,125,937
25. Aggregate write-ins for other than invested assets	1,854,244	884,504	969,740	969,934
26. Total assets excluding Separate Accounts, Segregated Accounts and Protected Cell Accounts (Lines 12 to 25)	134,478,381	2,461,289	132,017,092	113,783,409
27. From Separate Accounts, Segregated Accounts and Protected Cell Accounts			0	0
28. Total (Lines 26 and 27)	134,478,381	2,461,289	132,017,092	113,783,409
DETAILS OF WRITE-INS				
1101.				
1102.				
1103.				
1198. Summary of remaining write-ins for Line 11 from overflow page	0	0	0	0
1199. Totals (Lines 1101 through 1103 plus 1198)(Line 11 above)	0	0	0	0
2501. State income tax recoverable	969,740		969,740	969,934
2502. Prepaid expenses	882,383	882,383	0	0
2503. Miscellaneous receivables	2,121	2,121	0	0
2598. Summary of remaining write-ins for Line 25 from overflow page	0	0	0	0
2599. Totals (Lines 2501 through 2503 plus 2598)(Line 25 above)	1,854,244	884,504	969,740	969,934

STATEMENT AS OF SEPTEMBER 30, 2022 OF THE AMH Health, LLC

LIABILITIES, CAPITAL AND SURPLUS

	Current Period			Prior Year
	1 Covered	2 Uncovered	3 Total	4 Total
1. Claims unpaid (less \$ reinsurance ceded)	39,158,396		39,158,396	25,907,920
2. Accrued medical incentive pool and bonus amounts	90,208		90,208	350,039
3. Unpaid claims adjustment expenses	647,879		647,879	500,564
4. Aggregate health policy reserves, including the liability of \$0 for medical loss ratio rebate per the Public Health Service Act	3,217,162		3,217,162	1,235,861
5. Aggregate life policy reserves			0	0
6. Property/casualty unearned premium reserve			0	0
7. Aggregate health claim reserves			0	0
8. Premiums received in advance	22,327,144		22,327,144	11,057
9. General expenses due or accrued	4,545		4,545	4,180
10.1 Current federal and foreign income tax payable and interest thereon (including \$ on realized gains (losses))			0	0
10.2 Net deferred tax liability			0	0
11. Ceded reinsurance premiums payable			0	0
12. Amounts withheld or retained for the account of others	60,489		60,489	77,608
13. Remittances and items not allocated	34,814		34,814	93,429
14. Borrowed money (including \$ current) and interest thereon \$ (including \$ current)			0	0
15. Amounts due to parent, subsidiaries and affiliates	27,028,274		27,028,274	53,094,668
16. Derivatives			0	0
17. Payable for securities	95,720		95,720	0
18. Payable for securities lending	3,351,441		3,351,441	1,561,239
19. Funds held under reinsurance treaties (with \$ authorized reinsurers, \$ unauthorized reinsurers and \$ certified reinsurers)			0	0
20. Reinsurance in unauthorized and certified (\$) companies			0	0
21. Net adjustments in assets and liabilities due to foreign exchange rates			0	0
22. Liability for amounts held under uninsured plans	5,972,523		5,972,523	48,502
23. Aggregate write-ins for other liabilities (including \$478,706 current)	478,706	0	478,706	156,637
24. Total liabilities (Lines 1 to 23)	102,467,301	0	102,467,301	83,041,704
25. Aggregate write-ins for special surplus funds	XXX	XXX	0	0
26. Common capital stock	XXX	XXX		
27. Preferred capital stock	XXX	XXX		
28. Gross paid in and contributed surplus	XXX	XXX	61,002,000	39,002,000
29. Surplus notes	XXX	XXX		
30. Aggregate write-ins for other than special surplus funds	XXX	XXX	0	0
31. Unassigned funds (surplus)	XXX	XXX	(31,452,209)	(8,260,295)
32. Less treasury stock, at cost:				
32.1 shares common (value included in Line 26 \$)	XXX	XXX		
32.2 shares preferred (value included in Line 27 \$)	XXX	XXX		
33. Total capital and surplus (Lines 25 to 31 minus Line 32)	XXX	XXX	29,549,791	30,741,705
34. Total liabilities, capital and surplus (Lines 24 and 33)	XXX	XXX	132,017,092	113,783,409
DETAILS OF WRITE-INS				
2301. Miscellaneous Medicare liabilities	439,834		439,834	143,191
2302. Escheat liability	38,872		38,872	13,446
2303.				
2398. Summary of remaining write-ins for Line 23 from overflow page	0	0	0	0
2399. Totals (Lines 2301 through 2303 plus 2398)(Line 23 above)	478,706	0	478,706	156,637
2501.	XXX	XXX		
2502.	XXX	XXX		
2503.	XXX	XXX		
2598. Summary of remaining write-ins for Line 25 from overflow page	XXX	XXX	0	0
2599. Totals (Lines 2501 through 2503 plus 2598)(Line 25 above)	XXX	XXX	0	0
3001.	XXX	XXX		
3002.	XXX	XXX		
3003.	XXX	XXX		
3098. Summary of remaining write-ins for Line 30 from overflow page	XXX	XXX	0	0
3099. Totals (Lines 3001 through 3003 plus 3098)(Line 30 above)	XXX	XXX	0	0

STATEMENT OF REVENUE AND EXPENSES

	Current Year To Date		Prior Year To Date	Prior Year Ended December 31
	1 Uncovered	2 Total	3 Total	4 Total
1. Member Months	XXX	150,500	118,201	160,585
2. Net premium income (including \$ non-health premium income)	XXX	167,799,798	126,924,745	170,491,948
3. Change in unearned premium reserves and reserve for rate credits	XXX	(55,831)	(646,484)	(1,227,969)
4. Fee-for-service (net of \$ medical expenses)	XXX			
5. Risk revenue	XXX			
6. Aggregate write-ins for other health care related revenues	XXX	0	0	0
7. Aggregate write-ins for other non-health revenues	XXX	0	0	0
8. Total revenues (Lines 2 to 7)	XXX	167,743,967	126,278,261	169,263,979
Hospital and Medical:				
9. Hospital/medical benefits		130,245,226	84,284,497	114,480,733
10. Other professional services		13,470,319	10,148,166	13,994,942
11. Outside referrals				
12. Emergency room and out-of-area		10,659,819	6,007,516	8,178,282
13. Prescription drugs		7,042,582	8,322,635	10,418,480
14. Aggregate write-ins for other hospital and medical	0	0	0	0
15. Incentive pool, withhold adjustments and bonus amounts		1,660,501	2,529,506	2,406,466
16. Subtotal (Lines 9 to 15)	0	163,078,447	111,292,320	149,478,903
Less:				
17. Net reinsurance recoveries				
18. Total hospital and medical (Lines 16 minus 17)	0	163,078,447	111,292,320	149,478,903
19. Non-health claims (net)				
20. Claims adjustment expenses, including \$ 4,174,488 cost containment expenses		6,898,410	6,086,477	8,378,491
21. General administrative expenses		15,306,118	11,897,253	17,701,718
22. Increase in reserves for life and accident and health contracts (including \$ increase in reserves for life only)		1,925,470	2,394,219	0
23. Total underwriting deductions (Lines 18 through 22)	0	187,208,445	131,670,269	175,559,112
24. Net underwriting gain or (loss) (Lines 8 minus 23)	XXX	(19,464,478)	(5,392,008)	(6,295,133)
25. Net investment income earned		51,582	189,234	259,088
26. Net realized capital gains (losses) less capital gains tax of \$ (34,552)		(125,058)	152,510	152,510
27. Net investment gains (losses) (Lines 25 plus 26)	0	(73,476)	341,744	411,598
28. Net gain or (loss) from agents' or premium balances charged off [(amount recovered \$) (amount charged off \$ 13,072)]		(13,072)	(8,241)	(9,987)
29. Aggregate write-ins for other income or expenses	0	32,131	48,158	58,133
30. Net income or (loss) after capital gains tax and before all other federal income taxes (Lines 24 plus 27 plus 28 plus 29)	XXX	(19,518,895)	(5,010,347)	(5,835,389)
31. Federal and foreign income taxes incurred	XXX	(198,236)	(507,846)	(12,344)
32. Net income (loss) (Lines 30 minus 31)	XXX	(19,320,659)	(4,502,501)	(5,823,045)
DETAILS OF WRITE-INS				
0601.	XXX			
0602.	XXX			
0603.	XXX			
0698. Summary of remaining write-ins for Line 6 from overflow page	XXX	0	0	0
0699. Totals (Lines 0601 through 0603 plus 0698)(Line 6 above)	XXX	0	0	0
0701.	XXX			
0702.	XXX			
0703.	XXX			
0798. Summary of remaining write-ins for Line 7 from overflow page	XXX	0	0	0
0799. Totals (Lines 0701 through 0703 plus 0798)(Line 7 above)	XXX	0	0	0
1401.				
1402.				
1403.				
1498. Summary of remaining write-ins for Line 14 from overflow page	0	0	0	0
1499. Totals (Lines 1401 through 1403 plus 1498)(Line 14 above)	0	0	0	0
2901. Miscellaneous income (expense)		32,131	48,158	58,133
2902.				
2903.				
2998. Summary of remaining write-ins for Line 29 from overflow page	0	0	0	0
2999. Totals (Lines 2901 through 2903 plus 2998)(Line 29 above)	0	32,131	48,158	58,133

STATEMENT OF REVENUE AND EXPENSES (Continued)

	1 Current Year to Date	2 Prior Year to Date	3 Prior Year Ended December 31
CAPITAL AND SURPLUS ACCOUNT			
33. Capital and surplus prior reporting year.....	30,741,705	14,101,828	14,101,828
34. Net income or (loss) from Line 32.....	(19,320,659)	(4,502,501)	(5,823,045)
35. Change in valuation basis of aggregate policy and claim reserves.....			
36. Change in net unrealized capital gains (losses) less capital gains tax of \$.....	(1,656,921)	(511,766)	(901,900)
37. Change in net unrealized foreign exchange capital gain or (loss).....			
38. Change in net deferred income tax.....	(232,786)	(25,438)	(25,232)
39. Change in nonadmitted assets.....	(1,981,548)	1,145,797	2,390,054
40. Change in unauthorized and certified reinsurance.....	0	0	0
41. Change in treasury stock.....	0	0	0
42. Change in surplus notes.....	0	0	0
43. Cumulative effect of changes in accounting principles.....			
44. Capital Changes:			
44.1 Paid in.....			0
44.2 Transferred from surplus (Stock Dividend).....	0	0	0
44.3 Transferred to surplus.....			
45. Surplus adjustments:			
45.1 Paid in.....	22,000,000	8,000,000	21,000,000
45.2 Transferred to capital (Stock Dividend).....			
45.3 Transferred from capital.....			
46. Dividends to stockholders.....			
47. Aggregate write-ins for gains or (losses) in surplus.....	0	0	0
48. Net change in capital & surplus (Lines 34 to 47).....	(1,191,914)	4,106,092	16,639,877
49. Capital and surplus end of reporting period (Line 33 plus 48)	29,549,791	18,207,920	30,741,705
DETAILS OF WRITE-INS			
4701.			
4702.			
4703.			
4798. Summary of remaining write-ins for Line 47 from overflow page.....	0	0	0
4799. Totals (Lines 4701 through 4703 plus 4798)(Line 47 above)	0	0	0

STATEMENT AS OF SEPTEMBER 30, 2022 OF THE AMH Health, LLC

CASH FLOW

	1 Current Year To Date	2 Prior Year To Date	3 Prior Year Ended December 31
Cash from Operations			
1. Premiums collected net of reinsurance	186,705,781	123,498,416	167,028,472
2. Net investment income	542,455	273,861	422,663
3. Miscellaneous income	0	0	0
4. Total (Lines 1 to 3)	187,248,236	123,772,277	167,451,135
5. Benefit and loss related payments	151,942,879	61,423,205	137,091,844
6. Net transfers to Separate Accounts, Segregated Accounts and Protected Cell Accounts			
7. Commissions, expenses paid and aggregate write-ins for deductions	17,253,066	20,778,717	31,035,610
8. Dividends paid to policyholders			
9. Federal and foreign income taxes paid (recovered) net of \$ (34,552) tax on capital gains (losses)	0	0	0
10. Total (Lines 5 through 9)	169,195,945	82,201,922	168,127,454
11. Net cash from operations (Line 4 minus Line 10)	18,052,291	41,570,355	(676,319)
Cash from Investments			
12. Proceeds from investments sold, matured or repaid:			
12.1 Bonds	7,692,392	35,126,186	35,126,183
12.2 Stocks	1,354,182	0	0
12.3 Mortgage loans	0	0	0
12.4 Real estate	0	0	0
12.5 Other invested assets	0	0	0
12.6 Net gains or (losses) on cash, cash equivalents and short-term investments	(359)	0	0
12.7 Miscellaneous proceeds	95,720	27,006,504	0
12.8 Total investment proceeds (Lines 12.1 to 12.7)	9,141,935	62,132,690	35,126,183
13. Cost of investments acquired (long-term only):			
13.1 Bonds	33,827,350	60,506,006	62,007,200
13.2 Stocks	2,000,000	4,101,194	2,600,000
13.3 Mortgage loans	0	0	0
13.4 Real estate	0	0	0
13.5 Other invested assets	0	0	0
13.6 Miscellaneous applications	1,790,549	35,126,186	1,561,239
13.7 Total investments acquired (Lines 13.1 to 13.6)	37,617,899	99,733,386	66,168,439
14. Net increase (or decrease) in contract loans and premium notes	0	0	0
15. Net cash from investments (Line 12.8 minus Line 13.7 and Line 14)	(28,475,964)	(37,600,696)	(31,042,256)
Cash from Financing and Miscellaneous Sources			
16. Cash provided (applied):			
16.1 Surplus notes, capital notes	0	0	0
16.2 Capital and paid in surplus, less treasury stock	22,000,000	8,000,000	21,000,000
16.3 Borrowed funds	0	0	0
16.4 Net deposits on deposit-type contracts and other insurance liabilities	0	0	0
16.5 Dividends to stockholders	0	0	0
16.6 Other cash provided (applied)	(24,657,250)	(24,819,334)	29,764,041
17. Net cash from financing and miscellaneous sources (Line 16.1 through Line 16.4 minus Line 16.5 plus Line 16.6)	(2,657,250)	(16,819,334)	50,764,041
RECONCILIATION OF CASH, CASH EQUIVALENTS AND SHORT-TERM INVESTMENTS			
18. Net change in cash, cash equivalents and short-term investments (Line 11, plus Lines 15 and 17)	(13,080,923)	(12,849,675)	19,045,466
19. Cash, cash equivalents and short-term investments:			
19.1 Beginning of year	69,499,398	50,453,932	50,453,932
19.2 End of period (Line 18 plus Line 19.1)	56,418,475	37,604,257	69,499,398

Note: Supplemental disclosures of cash flow information for non-cash transactions:

--	--	--	--

STATEMENT AS OF SEPTEMBER 30, 2022 OF THE AMH Health, LLC

EXHIBIT OF PREMIUMS, ENROLLMENT AND UTILIZATION

	1 Total	Comprehensive (Hospital & Medical)		4 Medicare Supplement	5 Vision Only	6 Dental Only	7 Federal Employees Health Benefit Plan	8 Title XVIII Medicare	9 Title XIX Medicaid	10 Other
		2 Individual	3 Group							
Total Members at end of:										
1. Prior Year	14,152	0	0	0	0	0	0	14,152	0	0
2. First Quarter	16,557	0	0	0	0	0	0	16,557	0	0
3. Second Quarter	16,854	0	0	0	0	0	0	16,854	0	0
4. Third Quarter	17,090							17,090		
5. Current Year	0									
6. Current Year Member Months	150,500							150,500		
Total Member Ambulatory Encounters for Period:										
7. Physician	175,269							175,269		
8. Non-Physician	303,167							303,167		
9. Total	478,436	0	0	0	0	0	0	478,436	0	0
10. Hospital Patient Days Incurred	22,866							22,866		
11. Number of Inpatient Admissions	2,599							2,599		
12. Health Premiums Written (a)	167,799,798							167,799,798		
13. Life Premiums Direct	0									
14. Property/Casualty Premiums Written	0									
15. Health Premiums Earned	167,743,967							167,743,967		
16. Property/Casualty Premiums Earned	0									
17. Amount Paid for Provision of Health Care Services.....	150,087,802							150,087,802		
18. Amount Incurred for Provision of Health Care Services	163,078,447							163,078,447		

(a) For health premiums written: amount of Medicare Title XVIII exempt from state taxes or fees \$167,799,798

CLAIMS UNPAID AND INCENTIVE POOL, WITHHOLD AND BONUS (Reported and Unreported)

Aging Analysis of Unpaid Claims

1 Account	2 1 - 30 Days	3 31 - 60 Days	4 61 - 90 Days	5 91 - 120 Days	6 Over 120 Days	7 Total
Claims Unpaid (Reported)						
0299999 Aggregate accounts not individually listed-uncovered						0
0399999 Aggregate accounts not individually listed-covered	15,424,676	2,307,605	16,863	16,666	16,449	17,782,259
0499999 Subtotals	15,424,676	2,307,605	16,863	16,666	16,449	17,782,259
0599999 Unreported claims and other claim reserves						21,376,137
0699999 Total amounts withheld						
0799999 Total claims unpaid						39,158,396
0899999 Accrued medical incentive pool and bonus amounts						90,208

UNDERWRITING AND INVESTMENT EXHIBIT

ANALYSIS OF CLAIMS UNPAID - PRIOR YEAR - NET OF REINSURANCE

Line of Business	Claims Paid Year to Date		Liability End of Current Quarter		5 Claims Incurred in Prior Years (Columns 1 + 3)	6 Estimated Claim Reserve and Claim Liability December 31 of Prior Year
	1 On Claims Incurred Prior to January 1 of Current Year	2 On Claims Incurred During the Year	3 On Claims Unpaid Dec. 31 of Prior Year	4 On Claims Incurred During the Year		
1. Comprehensive (hospital and medical)					0	0
2. Medicare Supplement					0	0
3. Dental Only					0	0
4. Vision Only					0	0
5. Federal Employees Health Benefits Plan					0	0
6. Title XVIII - Medicare	24,000,707	127,800,527	4,052,664	35,105,732	28,053,371	25,907,920
7. Title XIX - Medicaid					0	0
8. Other health					0	0
9. Health subtotal (Lines 1 to 8)	24,000,707	127,800,527	4,052,664	35,105,732	28,053,371	25,907,920
10. Healthcare receivables (a)	44,481	3,589,283			44,481	0
11. Other non-health					0	0
12. Medical incentive pools and bonus amounts	794,842	1,125,490	491	89,717	795,333	350,039
13. Totals (Lines 9-10+11+12)	24,751,068	125,336,734	4,053,155	35,195,449	28,804,223	26,257,959

(a) Excludes \$ 510,445 loans or advances to providers not yet expensed.

STATEMENT AS OF September 30, 2022 OF THE AMH Health, LLC.

NOTES TO FINANCIAL STATEMENTS

For the purposes of the quarterly interim financial information, it is presumed that the users of the interim financial information have read or have access to the Annual Statement as of December 31, 2021. This presentation addresses only significant events occurring since the last Annual Statement.

1. Summary of Significant Accounting Policies and Going Concern

A. Accounting Practices

The accompanying financial statements of AMH Health, LLC (the “Company”) have been prepared in conformity with the National Association of Insurance Commissioners’ (“NAIC”) *Annual Statement Instructions* and in accordance with accounting practices prescribed by the NAIC *Accounting Practices and Procedures Manual* (“NAIC SAP”), subject to any deviations prescribed or permitted by the Bureau.

A reconciliation of the Company’s net income and capital and surplus between NAIC SAP and practices prescribed and permitted by the Bureau is shown below:

	SSAP #	F/S Page	F/S Line #	September 30, 2022	December 31, 2021
Net Income					
(1) AMH Health, LLC. state basis (Page 4, Line 32, Columns 2 & 4)	XXX	XXX	XXX	\$ (19,320,659)	\$ (5,823,045)
(2) State Prescribed Practices that is an increase/(decrease) from NAIC SAP:				—	—
(3) State Permitted Practices that is an increase/(decrease) from NAIC SAP:				—	—
(4) NAIC SAP (1-2-3=4)	XXX	XXX	XXX	<u>\$ (19,320,659)</u>	<u>\$ (5,823,045)</u>
Surplus					
(5) AMH Health, LLC. state basis (Page 3, Line 33, Columns 3 & 4)	XXX	XXX	XXX	\$ 29,549,791	\$ 30,741,705
(6) State Prescribed Practices that is an increase/(decrease) from NAIC SAP:				—	—
(7) State Permitted Practices that is an increase/(decrease) from NAIC SAP:				—	—
(8) NAIC SAP (5-6-7=8)	XXX	XXX	XXX	<u>\$ 29,549,791</u>	<u>\$ 30,741,705</u>

B. Use of Estimates in the Preparation of the Financial Statements

No significant change.

NOTES TO FINANCIAL STATEMENTS

C. Accounting Policies

(1) No significant change.

(2) Investment grade bonds not backed by other loans are stated at amortized cost, with amortization calculated based on the modified scientific method, using lower of yield to call or yield to maturity. Non-investment grade bonds are stated at the lower of amortized cost or fair value as determined by various third-party pricing sources.

The Company holds 17 SVO-Identified bond exchange trade funds (“ETFs”) reported as bonds on Schedule D-1 in which the Company has made an irrevocable decision to report at systematic value. Systematic valuation has been consistently applied to these ETFs held at September 30, 2022 and previous periods.

(3) - (5) No significant change.

(6) Loan-backed securities are stated at amortized cost. Pre-payment assumptions for loan-backed securities and structured securities were obtained from broker-dealer survey values or internal estimates. These assumptions are consistent with the current interest rate and economic environment. The retrospective adjustment method is used to value all loan-backed securities. Non-investment grade loan-backed securities are stated at the lower of amortized cost or fair value.

(7) - (13) No significant change.

D. Going Concern

Not applicable.

2. Accounting Changes and Corrections of Errors

Not applicable.

3. Business Combinations and Goodwill

Not applicable.

4. Discontinued Operations

Not applicable.

5. Investments

A. - C.

Not applicable.

D. Loan-Backed Securities

(1) Prepayment assumptions for single-class and multi-class mortgage-backed and asset-backed securities were obtained from broker-dealer survey values or internal estimates. The Company used various third-party pricing sources in determining the market value of its loan-backed securities.

(2) The Company did not recognize other-than-temporary impairments ("OTTI") on its loan-backed securities during the nine months ended September 30, 2022.

(3) The Company did not recognize OTTI on its loan-backed securities at September 30, 2022.

NOTES TO FINANCIAL STATEMENTS

(4) All impaired securities (fair value is less than cost or amortized cost) for which an OTTI has not been recognized in earnings as a realized loss (including securities with a recognized OTTI for non-interest related declines when a non-recognized interest related impairment remains):

a.	The aggregate amount of unrealized losses:		
		1. Less than 12 Months	\$ (94,815)
		2. 12 Months or Longer	\$ —
b.	The aggregate related fair value of securities with unrealized losses:		
		1. Less than 12 Months	\$ 5,386,827
		2. 12 Months or Longer	\$ —

(5) The Company's bond portfolio is sensitive to interest rate fluctuations, which impact the fair value of individual securities. Unrealized losses on bonds were primarily caused by the effects of the interest rate environment and the widening of credit spreads on certain securities. The Company currently has the ability and intent to hold these securities until their full cost can be recovered. Therefore, the Company does not believe the unrealized losses represent an OTTI at September 30, 2022

E. Dollar Repurchase Agreements and/or Securities Lending Transactions

- (1) Not applicable.
- (2) No significant change.
- (3) Collateral Received
 - a. No significant change.
 - b. The fair value of that collateral and of the portion of that collateral that it has sold or repledged \$ 3,351,441
 - c. No significant change.
- (4) Not applicable.
- (5) No significant change.
- (6) Not applicable.
- (7) Not applicable.

F. Repurchase Agreements Transactions Accounted for as Secured Borrowing

The Company did not enter into repurchase agreement transactions accounted for as secured borrowing at September 30, 2022.

G. Reverse Repurchase Agreements Transactions Accounted for as Secured Borrowing

The Company did not enter into reverse repurchase agreement transactions accounted for as a secured borrowing at September 30, 2022.

H. Repurchase Agreements Transactions Accounted for as a Sale

The Company did not enter into repurchase agreement transactions accounted for as a sale at September 30, 2022.

I. Reverse Repurchase Agreements Transactions Accounted for as a Sale

The Company did not enter into reverse repurchase agreement transactions accounted for as a sale at September 30, 2022.

STATEMENT AS OF September 30, 2022 OF THE AMH Health, LLC.
NOTES TO FINANCIAL STATEMENTS

J. Real Estate

Not applicable.

K. Investments in Low-Income Housing Tax Credits

Not applicable.

L. Restricted Assets

No significant change.

M. Working Capital Finance Investments

Not applicable.

N. Offsetting and Netting of Assets and Liabilities

The Company had no netted assets and liabilities at September 30, 2022.

O. 5GI Securities

The Company has no 5GI Securities as of September 30, 2022.

P. Short Sales

The Company did not have any short sales at September 30, 2022.

Q. Prepayment Penalty and Acceleration Fees

The Company did not have any prepayment penalty or acceleration fees at September 30, 2022.

R. Reporting Entity's Share of Cash Pool by Asset Type

The Company did not participate in a cash pool at September 30, 2022.

6. Joint Ventures, Partnerships and Limited Liability Companies

Not applicable.

7. Investment Income

No significant change.

8. Derivative Instruments

Not applicable.

9. Income Taxes

No significant change.

NOTES TO FINANCIAL STATEMENTS

10. Information Concerning Parent, Subsidiaries, Affiliates and Other Related Parties

A. Nature of the Relationship

The Company is a wholly-owned subsidiary of Elevance Health, Inc. (“Elevance Health”), a publicly traded company. Elevance Health changed its name from Anthem, Inc. on June 27, 2022, following approval of its shareholders.

B. Significant Transactions for the Period

On June 29, 2022, the Company’s parent company, Elevance Health, Inc., authorized and paid a capital contribution to the Company in the amount of \$6,000,000.

The Company received a capital contribution from MaineHealth of \$6,000,000 on June 28, 2022.

The Company paid an additional capital contribution of \$2,000,000 to AMH Health Plans of Maine, Inc. on June 28, 2022.

On September 23, 2022, the Company’s parent company, Elevance Health, Inc., authorized and paid a capital contribution to the Company in the amount of \$5,000,000.

The Company received a capital contribution from MaineHealth of \$5,000,000 on September 23, 2022.

C. Transactions with Related Parties who are not Reported on Schedule Y

No significant change.

D. Amounts Due to or from Related Parties

At September 30, 2022, the Company reported no amounts due from affiliates and \$27,028,274 due to affiliates. The payable balance represents intercompany transactions that will be settled in accordance with the settlement terms of the intercompany agreement.

E. - O.

No significant change.

11. Debt

Not applicable.

12. Retirement Plans, Deferred Compensation, Postemployment Benefits and Compensated Absences and Other Postretirement Benefit Plans

A. Defined Benefit Plan

Not applicable.

B. Not applicable.

C. Not applicable.

D. Not applicable.

STATEMENT AS OF September 30, 2022 OF THE AMH Health, LLC.
NOTES TO FINANCIAL STATEMENTS

E. Defined Contribution Plans

Not applicable.

F. Multiemployer Plans

The Company does not participate in a multiemployer plan.

G. Consolidated/Holding Company Plans

No significant change.

H. Post Employment Benefits and Compensated Absences

Not applicable.

I. Impact of Medicare Modernization Act on Postretirement Benefits (INT 04-17)

Not applicable.

13. Capital and Surplus, Shareholders' Dividend Restrictions and Quasi-Reorganizations

No significant change.

14. Liabilities, Contingencies and Assessments

No significant change.

15. Leases

Not applicable.

16. Information About Financial Instruments With Off-Balance Sheet Risk and Financial Instruments With Concentrations of Credit Risk

Not applicable.

17. Sale, Transfer and Servicing of Financial Assets and Extinguishments of Liabilities

A. Transfers of Receivables Reported as Sales

Not applicable.

B. Transfer and Servicing of Financial Assets

(1) The Company participates in a securities lending program whereby marketable securities in its investment portfolio are transferred to independent brokers or dealers. At September 30, 2022 the fair value of securities loaned was \$2,169,325 and the carrying value of securities loaned was \$2,319,166.

(2) - (7) Not applicable.

NOTES TO FINANCIAL STATEMENTS

C. Wash Sales

- (1) In the course of the Company's asset management, securities may be sold and reacquired within 30 days of the sale date to enhance the yield on the investments.
- (2) At September 30, 2022, there were no wash sales involving securities with an NAIC designation of 3 or below or unrated.

18. Gain or Loss to the Reporting Entity from Uninsured Plans and the Uninsured Portion of Partially Insured Plans

A. Administrative Services Only Plans

Not applicable.

B. Administrative Services Contract Plans

Not applicable.

C. Medicare or Other Similarly Structured Cost-Based Reimbursement Contract

Not applicable.

19. Direct Premium Written/Produced by Managing General Agents/Third Party Administrators

Not applicable.

20. Fair Value Measurements

A.

- (1) There are no assets or liabilities measured at fair value as of September 30, 2022.

- (2) Fair Value Measurement in (Level 3) of the Fair Value Hierarchy

There are no investments in Level 3 as of September 30, 2022.

- (3) The Company's policy is to recognize transfers between Levels, if any, as of the beginning of the reporting period.

- (4) Fair values of bonds are based on quoted market prices, where available. These fair values are obtained primarily from third party pricing services, which generally use Level 1 or Level 2 inputs, for the determination of fair value to facilitate fair value measurements and disclosures. Level 2 securities primarily include United States government securities, corporate securities, securities from states, municipalities and political subdivisions, mortgage-backed securities and certain other asset-backed securities. For securities not actively traded, the pricing services may use quoted market prices of comparable instruments or discounted cash flow analyses, incorporating inputs that are currently observable in the markets for similar securities. Inputs that are often used in the valuation methodologies include, but are not limited to, broker quotes, benchmark yields, credit spreads, default rates and prepayment speeds. The Company has controls in place to review the pricing services' qualifications and procedures used to determine fair values. In addition, the Company periodically reviews the pricing services' pricing methodologies, data sources and pricing inputs to ensure the fair values obtained are reasonable.

NOTES TO FINANCIAL STATEMENTS

Certain bonds, primarily corporate debt securities, are designated Level 3. For these securities, the valuation methodologies may incorporate broker quotes or discounted cash flow analyses using assumptions for inputs such as expected cash flows, benchmark yields, credit spreads, default rates and prepayment speeds that are not observable in the markets.

There have been no significant changes in the valuation techniques during the current period.

B. Fair Value Measurements Under Other Accounting Pronouncements

Not applicable.

C. Financial Instruments

Type of Financial Instrument	Aggregate Fair Value	Admitted Assets	(Level 1)	(Level 2)	(Level 3)	Net Asset Value ("NAV")	Not Practicable (Carrying Value)
Bonds	\$ 48,091,293	\$50,991,101	\$23,929,417	\$ 24,161,876	\$ —	\$ —	\$ —
Securities lending collateral asset	3,351,441	3,351,441	—	3,351,441	—	—	—

D. Not Practicable to Estimate Fair Value

There are no financial instruments that were not practicable to estimate at fair value.

E. Investments Measured at Net Asset Value

The Company has no investments measured at net asset value.

21. Other Items

No significant change.

22. Events Subsequent

Subsequent events have been considered through November 10, 2022 for the statutory statement issued on November 11, 2022. There were no events occurring subsequent to September 30, 2022 requiring recognition or disclosure.

23. Reinsurance

Not applicable.

24. Retrospectively Rated Contracts & Contracts Subject to Redetermination**A. - D.**

No significant change.

STATEMENT AS OF September 30, 2022 OF THE AMH Health, LLC.
NOTES TO FINANCIAL STATEMENTS

E. Risk Sharing Provisions of the Affordable Care Act ("ACA")

(1) Did the reporting entity write accident and health insurance premium that is subject to the Affordable Care Act risk sharing provisions (YES/NO)? No

(2) Impact of Risk-Sharing Provisions of the Affordable Care Act on Admitted Assets, Liabilities and Revenue for the Current Year.

Not applicable.

(3) Roll-forward of prior year ACA risk-sharing provisions for the following asset (gross of any nonadmission) and liability balances, along with the reasons for adjustments to prior year balance.

Not applicable.

(4) Roll-forward of Risk Corridors Asset and Liability Balances by Program Benefit Year.

Not applicable.

(5) ACA Risk Corridors Receivable as of Reporting Date.

Not applicable.

25. Change in Incurred Claims and Claim Adjustment Expenses

A. The estimated cost of claims and claim adjustment expense attributable to insured events of prior years increased by \$3,180,141 during 2022. This is approximately 11.9% of unpaid claims and claim adjustment expenses of \$26,758,523 as of December 31, 2021. The deficiency reflects the increases in estimated claims and claims adjustment expenses as a result of claims payment during the year, and as additional information is received regarding claims incurred prior to 2022. Recent claim development trends are also taken into account in evaluating the overall adequacy of unpaid claims and unpaid claim adjustment expense.

B. There were no significant changes in methodologies and assumptions used in calculating the liability for unpaid losses and loss adjustment expenses.

26. Intercompany Pooling Arrangements

Not applicable.

27. Structured Settlements

Not applicable.

28. Health Care Receivables

No significant change.

29. Participating Policies

Not applicable.

STATEMENT AS OF September 30, 2022 OF THE AMH Health, LLC.
NOTES TO FINANCIAL STATEMENTS

30. Premium Deficiency Reserves

1. Liability carried for premium deficiency reserves	\$	<u>1,925,470</u>
2. Date of the most recent evaluation of this liability		<u>September 30, 2022</u>
3. Was anticipated investment income utilized in the calculation?	Yes	<u>No</u> <u>X</u>

31. Anticipated Salvage and Subrogation

Not applicable.

GENERAL INTERROGATORIES

PART 1 - COMMON INTERROGATORIES

GENERAL

- 1.1 Did the reporting entity experience any material transactions requiring the filing of Disclosure of Material Transactions with the State of Domicile, as required by the Model Act? Yes [] No [X]
- 1.2 If yes, has the report been filed with the domiciliary state? Yes [] No []
- 2.1 Has any change been made during the year of this statement in the charter, by-laws, articles of incorporation, or deed of settlement of the reporting entity? Yes [] No [X]
- 2.2 If yes, date of change:
- 3.1 Is the reporting entity a member of an Insurance Holding Company System consisting of two or more affiliated persons, one or more of which is an insurer? Yes [X] No []
If yes, complete Schedule Y, Parts 1 and 1A.
- 3.2 Have there been any substantial changes in the organizational chart since the prior quarter end? Yes [] No [X]
- 3.3 If the response to 3.2 is yes, provide a brief description of those changes.
- 3.4 Is the reporting entity publicly traded or a member of a publicly traded group? Yes [X] No []
- 3.5 If the response to 3.4 is yes, provide the CIK (Central Index Key) code issued by the SEC for the entity/group. 0001156039
- 4.1 Has the reporting entity been a party to a merger or consolidation during the period covered by this statement? Yes [] No [X]
- 4.2 If yes, provide the name of the entity, NAIC Company Code, and state of domicile (use two letter state abbreviation) for any entity that has ceased to exist as a result of the merger or consolidation.

1	2	3
Name of Entity	NAIC Company Code	State of Domicile

5. If the reporting entity is subject to a management agreement, including third-party administrator(s), managing general agent(s), attorney-in-fact, or similar agreement, have there been any significant changes regarding the terms of the agreement or principals involved? Yes [] No [X] N/A []
If yes, attach an explanation.
- 6.1 State as of what date the latest financial examination of the reporting entity was made or is being made. 12/31/2022
- 6.2 State the as of date that the latest financial examination report became available from either the state of domicile or the reporting entity. This date should be the date of the examined balance sheet and not the date the report was completed or released.
- 6.3 State as of what date the latest financial examination report became available to other states or the public from either the state of domicile or the reporting entity. This is the release date or completion date of the examination report and not the date of the examination (balance sheet date).
- 6.4 By what department or departments?
State of Maine Bureau of Insurance
- 6.5 Have all financial statement adjustments within the latest financial examination report been accounted for in a subsequent financial statement filed with Departments? Yes [] No [] N/A [X]
- 6.6 Have all of the recommendations within the latest financial examination report been complied with? Yes [] No [] N/A [X]
- 7.1 Has this reporting entity had any Certificates of Authority, licenses or registrations (including corporate registration, if applicable) suspended or revoked by any governmental entity during the reporting period? Yes [] No [X]
- 7.2 If yes, give full information:
- 8.1 Is the company a subsidiary of a bank holding company regulated by the Federal Reserve Board? Yes [] No [X]
- 8.2 If response to 8.1 is yes, please identify the name of the bank holding company.
- 8.3 Is the company affiliated with one or more banks, thrifts or securities firms? Yes [] No [X]
- 8.4 If response to 8.3 is yes, please provide below the names and location (city and state of the main office) of any affiliates regulated by a federal regulatory services agency [i.e. the Federal Reserve Board (FRB), the Office of the Comptroller of the Currency (OCC), the Federal Deposit Insurance Corporation (FDIC) and the Securities Exchange Commission (SEC)] and identify the affiliate's primary federal regulator.

1	2	3	4	5	6
Affiliate Name	Location (City, State)	FRB	OCC	FDIC	SEC

GENERAL INTERROGATORIES

- 9.1 Are the senior officers (principal executive officer, principal financial officer, principal accounting officer or controller, or persons performing similar functions) of the reporting entity subject to a code of ethics, which includes the following standards? Yes No
- (a) Honest and ethical conduct, including the ethical handling of actual or apparent conflicts of interest between personal and professional relationships;
- (b) Full, fair, accurate, timely and understandable disclosure in the periodic reports required to be filed by the reporting entity;
- (c) Compliance with applicable governmental laws, rules and regulations;
- (d) The prompt internal reporting of violations to an appropriate person or persons identified in the code; and
- (e) Accountability for adherence to the code.
- 9.11 If the response to 9.1 is No, please explain:
- 9.2 Has the code of ethics for senior managers been amended? Yes No
- 9.21 If the response to 9.2 is Yes, provide information related to amendment(s).
Code amended to reflect name change from Anthem to Elevance Health.
- 9.3 Have any provisions of the code of ethics been waived for any of the specified officers? Yes No
- 9.31 If the response to 9.3 is Yes, provide the nature of any waiver(s).

FINANCIAL

- 10.1 Does the reporting entity report any amounts due from parent, subsidiaries or affiliates on Page 2 of this statement? Yes No
- 10.2 If yes, indicate any amounts receivable from parent included in the Page 2 amount: \$0

INVESTMENT

- 11.1 Were any of the stocks, bonds, or other assets of the reporting entity loaned, placed under option agreement, or otherwise made available for use by another person? (Exclude securities under securities lending agreements.) Yes No
- 11.2 If yes, give full and complete information relating thereto:
12. Amount of real estate and mortgages held in other invested assets in Schedule BA: \$
13. Amount of real estate and mortgages held in short-term investments: \$
- 14.1 Does the reporting entity have any investments in parent, subsidiaries and affiliates? Yes No
- 14.2 If yes, please complete the following:
- | | 1
Prior Year-End
Book/Adjusted
Carrying Value | 2
Current Quarter
Book/Adjusted
Carrying Value |
|---|--|---|
| 14.21 Bonds | \$0 | \$0 |
| 14.22 Preferred Stock | \$0 | \$0 |
| 14.23 Common Stock | \$3,936,356 | \$4,279,434 |
| 14.24 Short-Term Investments | \$0 | \$0 |
| 14.25 Mortgage Loans on Real Estate | \$0 | \$0 |
| 14.26 All Other | \$0 | \$0 |
| 14.27 Total Investment in Parent, Subsidiaries and Affiliates (Subtotal Lines 14.21 to 14.26) | \$3,936,356 | \$4,279,434 |
| 14.28 Total Investment in Parent included in Lines 14.21 to 14.26 above | \$ | \$ |
- 15.1 Has the reporting entity entered into any hedging transactions reported on Schedule DB? Yes No
- 15.2 If yes, has a comprehensive description of the hedging program been made available to the domiciliary state? Yes No N/A
- If no, attach a description with this statement.
16. For the reporting entity's security lending program, state the amount of the following as of the current statement date:
- 16.1 Total fair value of reinvested collateral assets reported on Schedule DL, Parts 1 and 2 \$3,351,441
- 16.2 Total book adjusted/carrying value of reinvested collateral assets reported on Schedule DL, Parts 1 and 2 \$3,351,441
- 16.3 Total payable for securities lending reported on the liability page. \$3,351,441

GENERAL INTERROGATORIES

17. Excluding items in Schedule E - Part 3 - Special Deposits, real estate, mortgage loans and investments held physically in the reporting entity's offices, vaults or safety deposit boxes, were all stocks, bonds and other securities, owned throughout the current year held pursuant to a custodial agreement with a qualified bank or trust company in accordance with Section 1, III - General Examination Considerations, F. Outsourcing of Critical Functions, Custodial or Safekeeping Agreements of the NAIC Financial Condition Examiners Handbook? Yes [] No []
- 17.1 For all agreements that comply with the requirements of the NAIC Financial Condition Examiners Handbook, complete the following:

1 Name of Custodian(s)	2 Custodian Address
JP Morgan Chase Bank, N.A	383 Madison Ave, New York, NY 10179

- 17.2 For all agreements that do not comply with the requirements of the NAIC Financial Condition Examiners Handbook, provide the name, location and a complete explanation:

1 Name(s)	2 Location(s)	3 Complete Explanation(s)

- 17.3 Have there been any changes, including name changes, in the custodian(s) identified in 17.1 during the current quarter? Yes [] No []

- 17.4 If yes, give full information relating thereto:

1 Old Custodian	2 New Custodian	3 Date of Change	4 Reason

- 17.5 Investment management – Identify all investment advisors, investment managers, broker/dealers, including individuals that have the authority to make investment decisions on behalf of the reporting entity. For assets that are managed internally by employees of the reporting entity, note as such. ["...that have access to the investment accounts"; "...handle securities"]

1 Name of Firm or Individual	2 Affiliation
	I.....
	U.....
	U.....

- 17.5097 For those firms/individuals listed in the table for Question 17.5, do any firms/individuals unaffiliated with the reporting entity (i.e. designated with a "U") manage more than 10% of the reporting entity's invested assets? Yes [] No []

- 17.5098 For firms/individuals unaffiliated with the reporting entity (i.e. designated with a "U") listed in the table for Question 17.5, does the total assets under management aggregate to more than 50% of the reporting entity's invested assets? Yes [] No []

- 17.6 For those firms or individuals listed in the table for 17.5 with an affiliation code of "A" (affiliated) or "U" (unaffiliated), provide the information for the table below.

1 Central Registration Depository Number	2 Name of Firm or Individual	3 Legal Entity Identifier (LEI)	4 Registered With	5 Investment Management Agreement (IMA) Filed
104863	Income Research & Management	254900R033N8JBVSKJ39	Securities Exchange Commission	NO.....
105377	Loomis, Sayles & Company, LP	J1ZPN2RX3UMNOYID1313	Securities Exchange Commission	NO.....

- 18.1 Have all the filing requirements of the Purposes and Procedures Manual of the NAIC Investment Analysis Office been followed? Yes [] No []

- 18.2 If no, list exceptions:

19. By self-designating 5GI securities, the reporting entity is certifying the following elements for each self-designated 5GI security:
- a. Documentation necessary to permit a full credit analysis of the security does not exist or an NAIC CRP credit rating for an FE or PL security is not available.
 - b. Issuer or obligor is current on all contracted interest and principal payments.
 - c. The insurer has an actual expectation of ultimate payment of all contracted interest and principal.
- Has the reporting entity self-designated 5GI securities? Yes [] No []

20. By self-designating PLGI securities, the reporting entity is certifying the following elements of each self-designated PLGI security:
- a. The security was purchased prior to January 1, 2018.
 - b. The reporting entity is holding capital commensurate with the NAIC Designation reported for the security.
 - c. The NAIC Designation was derived from the credit rating assigned by an NAIC CRP in its legal capacity as a NRSRO which is shown on a current private letter rating held by the insurer and available for examination by state insurance regulators.
 - d. The reporting entity is not permitted to share this credit rating of the PL security with the SVO.
- Has the reporting entity self-designated PLGI securities? Yes [] No []

21. By assigning FE to a Schedule BA non-registered private fund, the reporting entity is certifying the following elements of each self-designated FE fund:
- a. The shares were purchased prior to January 1, 2019.
 - b. The reporting entity is holding capital commensurate with the NAIC Designation reported for the security.
 - c. The security had a public credit rating(s) with annual surveillance assigned by an NAIC CRP in its legal capacity as an NRSRO prior to January 1, 2019.
 - d. The fund only or predominantly holds bonds in its portfolio.
 - e. The current reported NAIC Designation was derived from the public credit rating(s) with annual surveillance assigned by an NAIC CRP in its legal capacity as an NRSRO.
 - f. The public credit rating(s) with annual surveillance assigned by an NAIC CRP has not lapsed.
- Has the reporting entity assigned FE to Schedule BA non-registered private funds that complied with the above criteria? Yes [] No []

GENERAL INTERROGATORIES

PART 2 - HEALTH

1. Operating Percentages:
- 1.1 A&H loss percent100.9 %
 - 1.2 A&H cost containment percent2.5 %
 - 1.3 A&H expense percent excluding cost containment expenses10.7 %
- 2.1 Do you act as a custodian for health savings accounts? Yes [] No [X]
- 2.2 If yes, please provide the amount of custodial funds held as of the reporting date\$
- 2.3 Do you act as an administrator for health savings accounts? Yes [] No [X]
- 2.4 If yes, please provide the balance of the funds administered as of the reporting date\$
3. Is the reporting entity licensed or chartered, registered, qualified, eligible or writing business in at least two states? Yes [] No [X]
- 3.1 If no, does the reporting entity assume reinsurance business that covers risks residing in at least one state other than the state of domicile of the reporting entity? Yes [] No [X]

SCHEDULE S - CEDED REINSURANCE

Showing All New Reinsurance Treaties - Current Year to Date

1 NAIC Company Code	2 ID Number	3 Effective Date	4 Name of Reinsurer	5 Domiciliary Jurisdiction	6 Type of Reinsurance Ceded	7 Type of Business Ceded	8 Type of Reinsurer	9 Certified Reinsurer Rating (1 through 6)	10 Effective Date of Certified Reinsurer Rating
NONE									

SCHEDULE T - PREMIUMS AND OTHER CONSIDERATIONS

Current Year to Date - Allocated by States and Territories

States, etc.	1 Active Status (a)	Direct Business Only									
		2 Accident and Health Premiums	3 Medicare Title XVIII	4 Medicaid Title XIX	5 CHIP Title XXI	6 Federal Employees Health Benefits Program Premiums	7 Life and Annuity Premiums & Other Considerations	8 Property/Casualty Premiums	9 Total Columns 2 Through 8	10 Deposit-Type Contracts	
1. Alabama AL	N									0	
2. Alaska AK	N									0	
3. Arizona AZ	N									0	
4. Arkansas AR	N									0	
5. California CA	N									0	
6. Colorado CO	N									0	
7. Connecticut CT	N									0	
8. Delaware DE	N									0	
9. District of Columbia DC	N									0	
10. Florida FL	N									0	
11. Georgia GA	N									0	
12. Hawaii HI	N									0	
13. Idaho ID	N									0	
14. Illinois IL	N									0	
15. Indiana IN	N									0	
16. Iowa IA	N									0	
17. Kansas KS	N									0	
18. Kentucky KY	N									0	
19. Louisiana LA	N									0	
20. Maine ME	L		167,799,798							167,799,798	
21. Maryland MD	N									0	
22. Massachusetts MA	N									0	
23. Michigan MI	N									0	
24. Minnesota MN	N									0	
25. Mississippi MS	N									0	
26. Missouri MO	N									0	
27. Montana MT	N									0	
28. Nebraska NE	N									0	
29. Nevada NV	N									0	
30. New Hampshire NH	N									0	
31. New Jersey NJ	N									0	
32. New Mexico NM	N									0	
33. New York NY	N									0	
34. North Carolina NC	N									0	
35. North Dakota ND	N									0	
36. Ohio OH	N									0	
37. Oklahoma OK	N									0	
38. Oregon OR	N									0	
39. Pennsylvania PA	N									0	
40. Rhode Island RI	N									0	
41. South Carolina SC	N									0	
42. South Dakota SD	N									0	
43. Tennessee TN	N									0	
44. Texas TX	N									0	
45. Utah UT	N									0	
46. Vermont VT	N									0	
47. Virginia VA	N									0	
48. Washington WA	N									0	
49. West Virginia WV	N									0	
50. Wisconsin WI	N									0	
51. Wyoming WY	N									0	
52. American Samoa AS	N									0	
53. Guam GU	N									0	
54. Puerto Rico PR	N									0	
55. U.S. Virgin Islands VI	N									0	
56. Northern Mariana Islands MP	N									0	
57. Canada CAN	N									0	
58. Aggregate Other Aliens OT	XXX	0	0	0	0	0	0	0	0	0	0
59. Subtotal	XXX	0	167,799,798	0	0	0	0	0	0	167,799,798	0
60. Reporting Entity Contributions for Employee Benefit Plans	XXX									0	
61. Totals (Direct Business)	XXX	0	167,799,798	0	0	0	0	0	0	167,799,798	0
DETAILS OF WRITE-INS											
58001.	XXX										
58002.	XXX										
58003.	XXX										
58998. Summary of remaining write-ins for Line 58 from overflow page	XXX	0	0	0	0	0	0	0	0	0	0
58999. Totals (Lines 58001 through 58003 plus 58998)(Line 58 above)	XXX	0	0	0	0	0	0	0	0	0	0

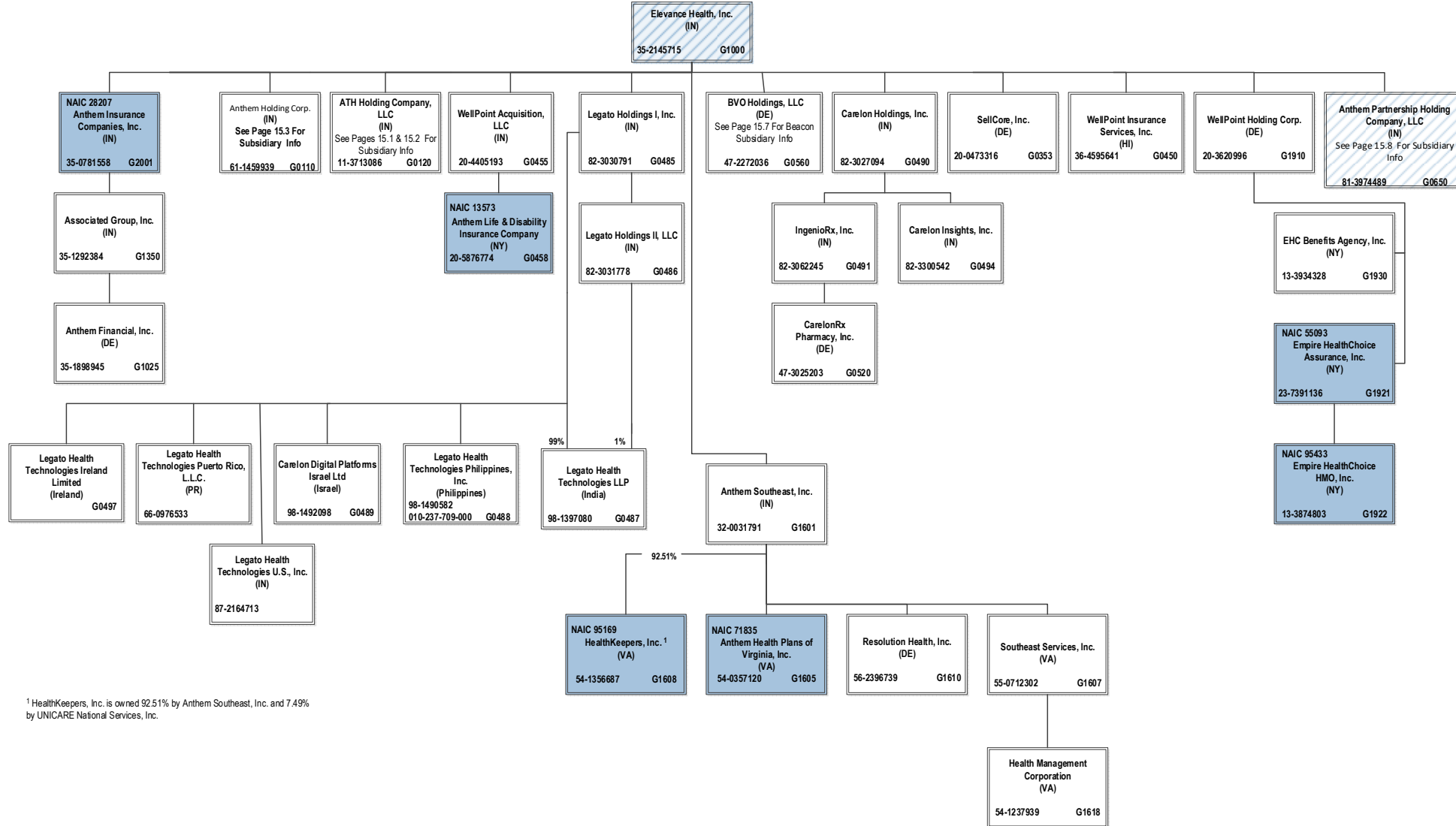
(a) Active Status Counts:

L - Licensed or Chartered - Licensed Insurance carrier or domiciled RRG..... 1 R - Registered - Non-domiciled RRGs..... 0
 E - Eligible - Reporting entities eligible or approved to write surplus lines in the state..... 0 Q - Qualified - Qualified or accredited reinsurer..... 0
 N - None of the above - Not allowed to write business in the state..... 56

SCHEDULE Y – INFORMATION CONCERNING ACTIVITIES OF INSURER MEMBERS OF A HOLDING COMPANY GROUP
PART 1 – ORGANIZATIONAL CHART

BCBSA Licensee
Regulated Insurance Company
Regulated BCBSA Licensee

ALL SUBSIDIARIES 100% OWNED AND LLC'S ARE CONTROLLED BY MEMBERS UNLESS OTHERWISE NOTED



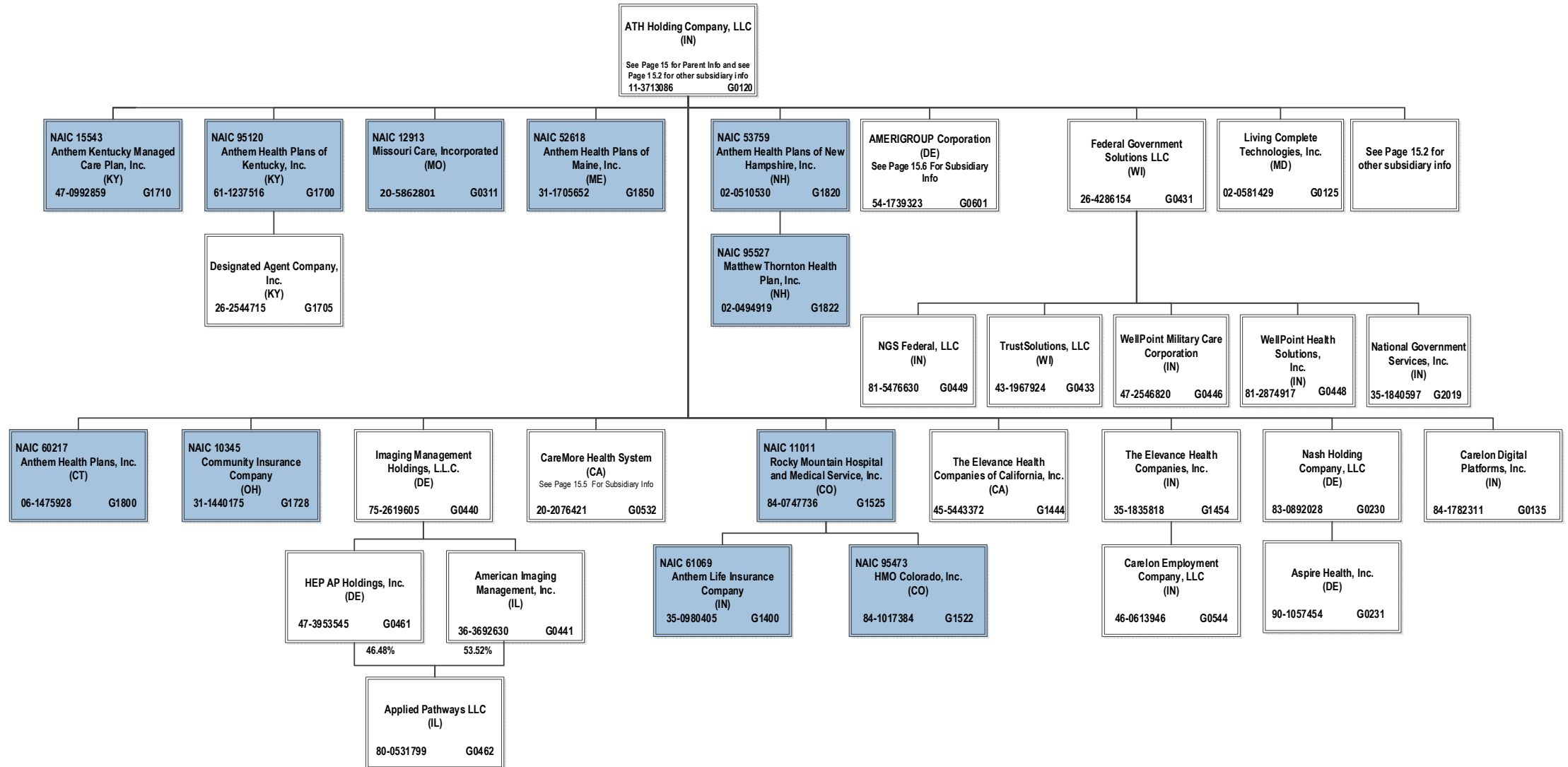
¹ HealthKeepers, Inc. is owned 92.51% by Anthem Southeast, Inc. and 7.49% by UNICARE National Services, Inc.

SCHEDULE Y – INFORMATION CONCERNING ACTIVITIES OF INSURER MEMBERS OF A HOLDING COMPANY GROUP

PART 1 – ORGANIZATIONAL CHART

ALL SUBSIDIARIES 100% OWNED AND LLC'S ARE CONTROLLED BY MEMBERS UNLESS OTHERWISE NOTED

BCBSA Licensee
Regulated Insurance Company
Regulated BCBSA Licensee

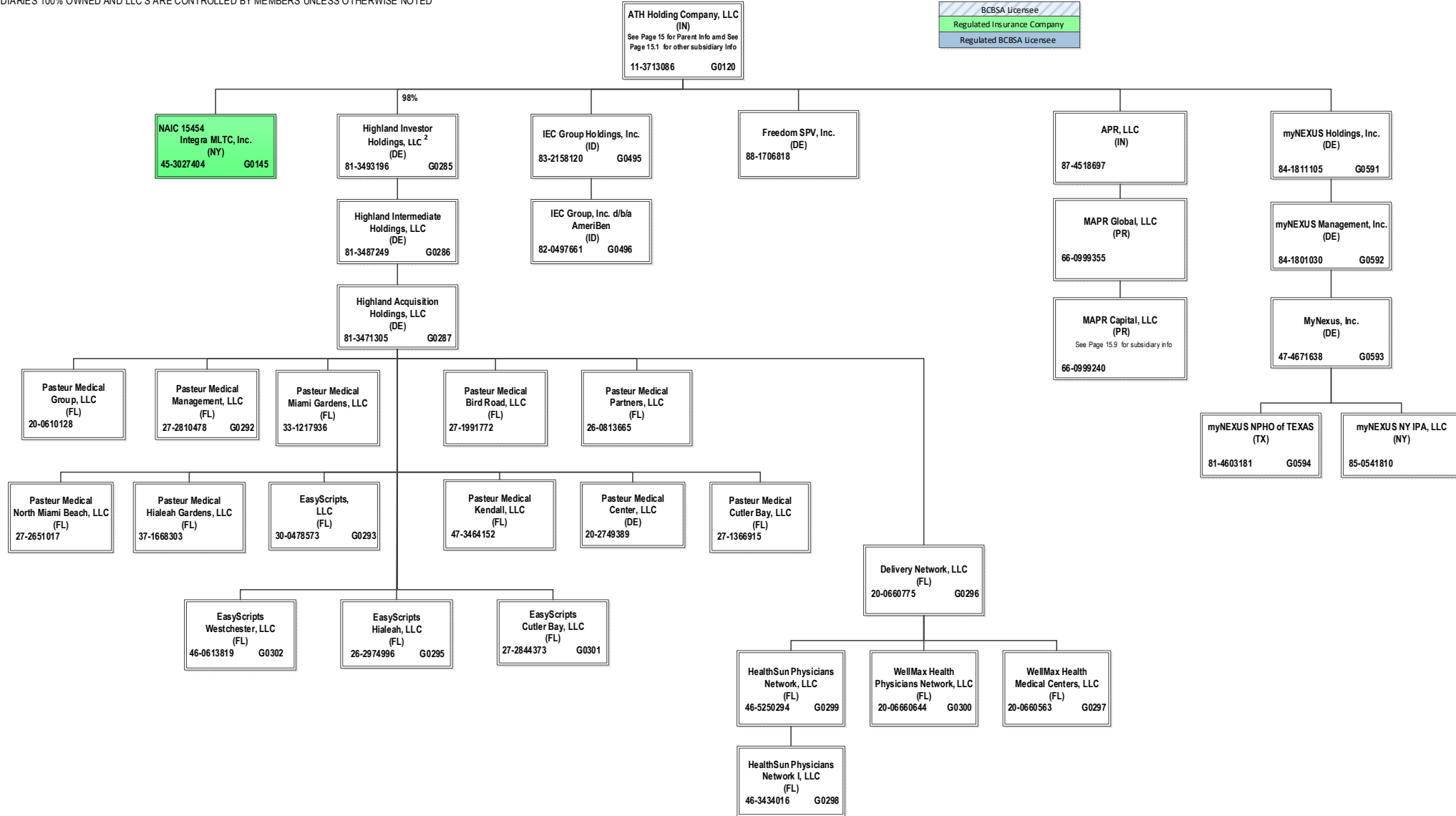


15.1

SCHEDULE Y – INFORMATION CONCERNING ACTIVITIES OF INSURER MEMBERS OF A HOLDING COMPANY GROUP

PART 1 – ORGANIZATIONAL CHART

ALL SUBSIDIARIES 100% OWNED AND LLC'S ARE CONTROLLED BY MEMBERS UNLESS OTHERWISE NOTED



² ATH Holding Company, LLC holds a 98% interest in Highland Investor Holdings, LLC, and Amerigroup Corporation holds the remaining 2% interest.

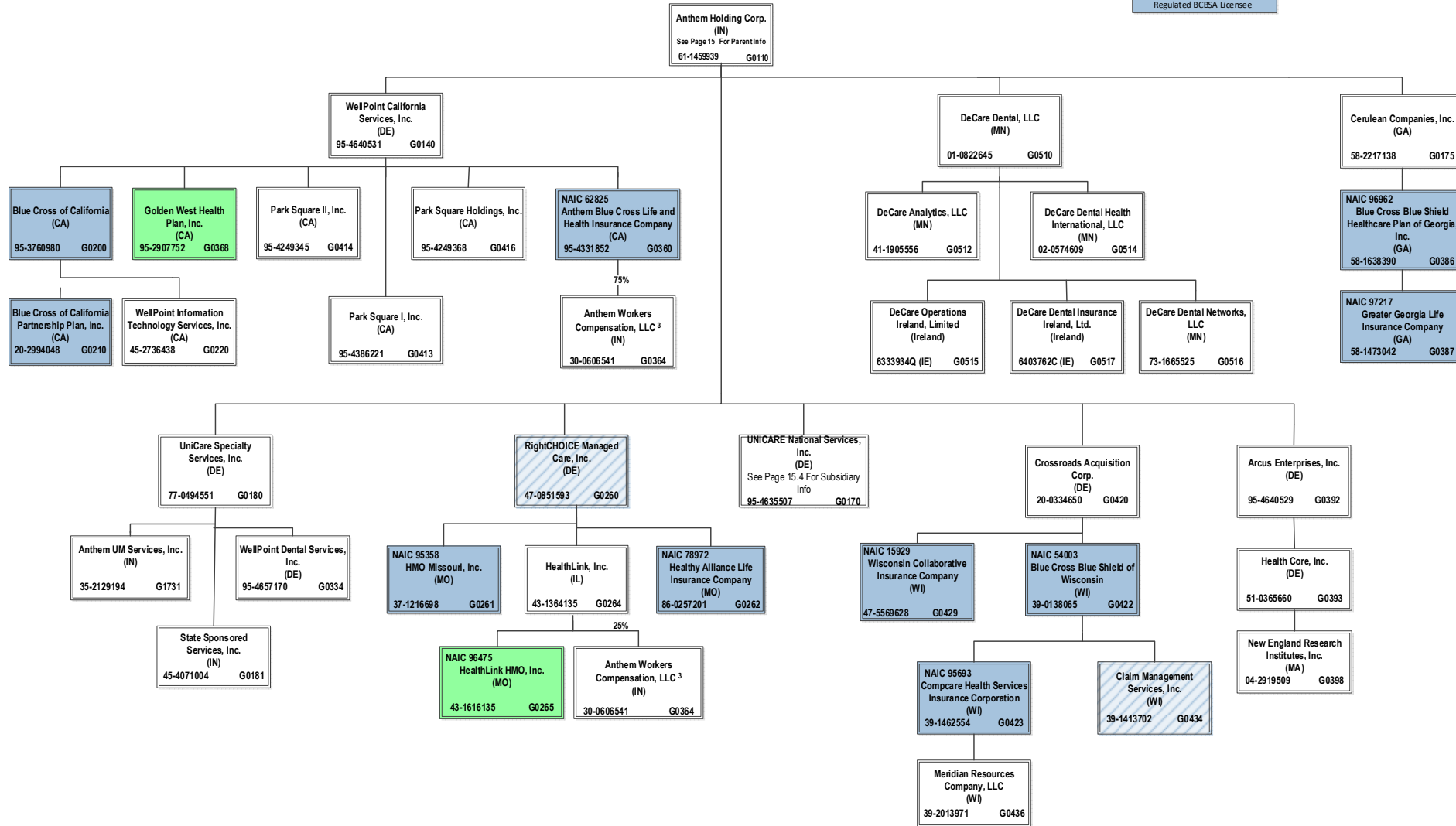
15.2

SCHEDULE Y – INFORMATION CONCERNING ACTIVITIES OF INSURER MEMBERS OF A HOLDING COMPANY GROUP

PART 1 – ORGANIZATIONAL CHART

ALL SUBSIDIARIES 100% OWNED AND LLC'S ARE CONTROLLED BY MEMBERS UNLESS OTHERWISE NOTED

BCBSA Licensee
Regulated Insurance Company
Regulated BCBSA Licensee



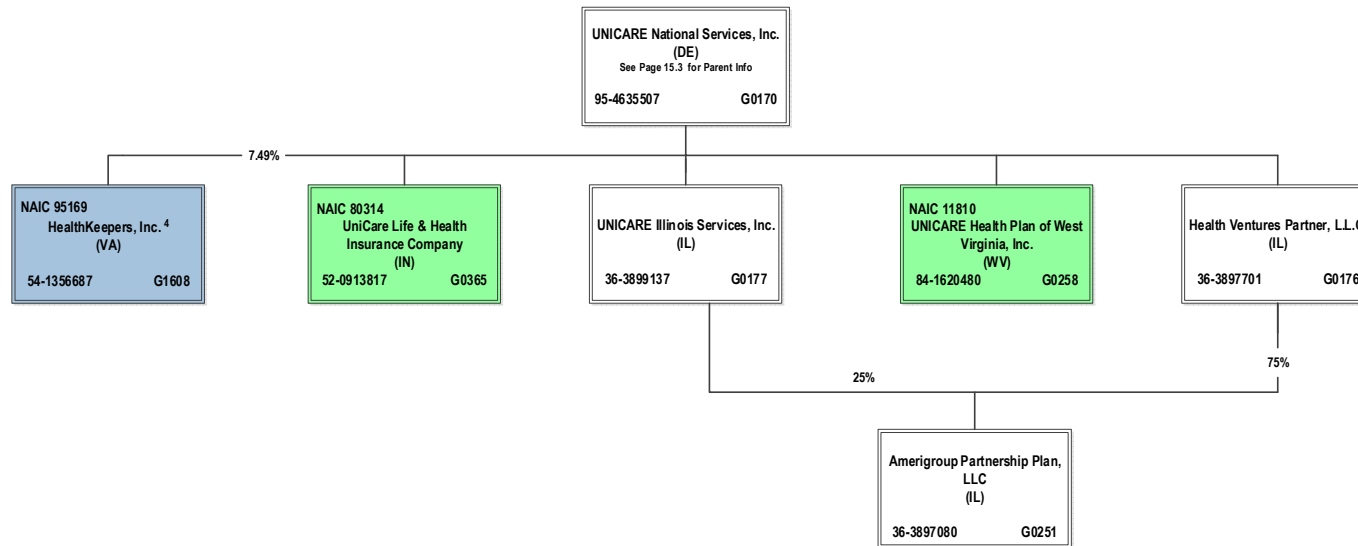
³ Anthem Workers' Compensation, LLC is owned 75% by Anthem Blue Cross Life and Health Insurance Company and 25% by HealthLink, Inc.

SCHEDULE Y – INFORMATION CONCERNING ACTIVITIES OF INSURER MEMBERS OF A HOLDING COMPANY GROUP

PART 1 – ORGANIZATIONAL CHART

ALL SUBSIDIARIES 100% OWNED AND LLC'S ARE CONTROLLED BY MEMBERS UNLESS OTHERWISE NOTED

BCBSA Licensee
Regulated Insurance Company
Regulated BCBSA Licensee



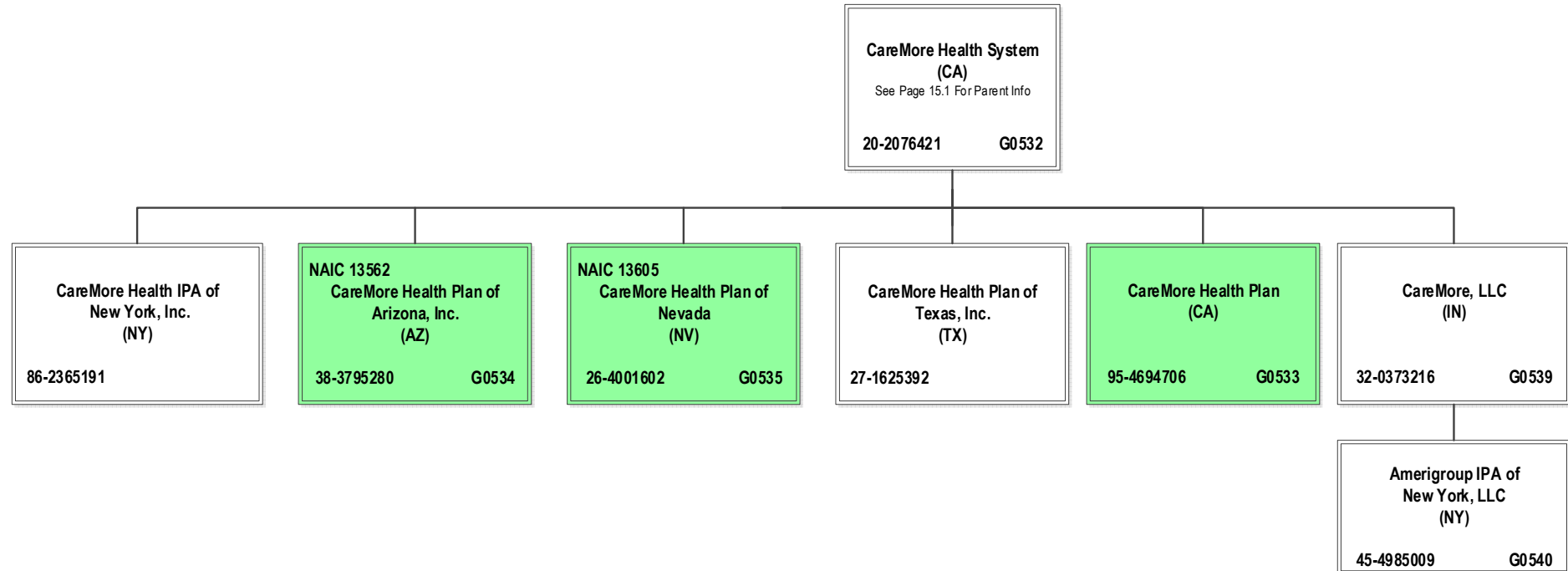
15.4

⁴ HealthKeepers, Inc. is owned 92.51% by Anthem Southeast, Inc. and 7.49% by UNICARE National Services, Inc.

SCHEDULE Y – INFORMATION CONCERNING ACTIVITIES OF INSURER MEMBERS OF A HOLDING COMPANY GROUP
PART 1 – ORGANIZATIONAL CHART

BCBSA Licensee
Regulated Insurance Company
Regulated BCBSA Licensee

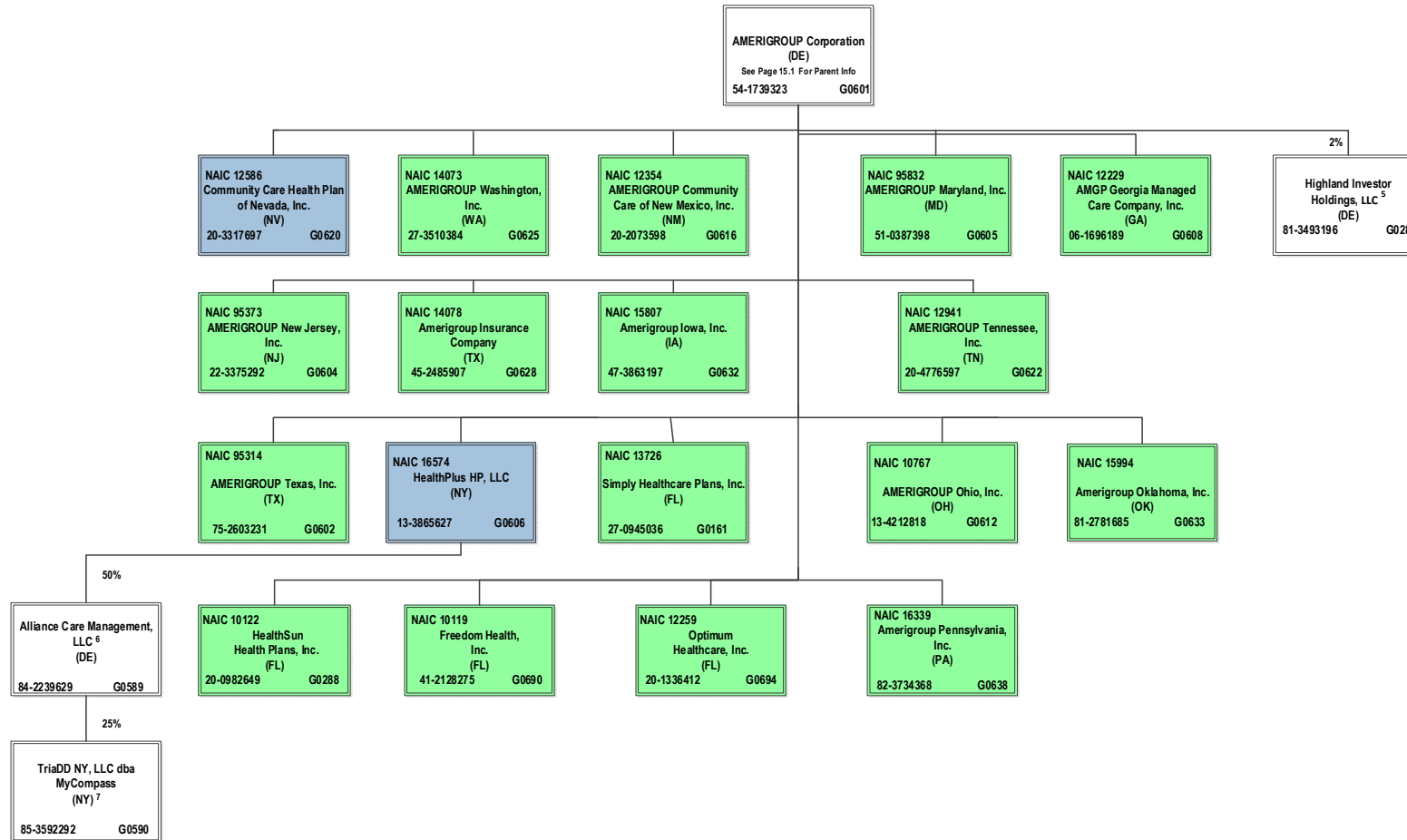
ALL SUBSIDIARIES 100% OWNED AND LLC'S ARE CONTROLLED BY MEMBERS UNLESS OTHERWISE NOTED



SCHEDULE Y – INFORMATION CONCERNING ACTIVITIES OF INSURER MEMBERS OF A HOLDING COMPANY GROUP

PART 1 – ORGANIZATIONAL CHART

ALL SUBSIDIARIES 100% OWNED AND LLC'S ARE CONTROLLED BY MEMBERS UNLESS OTHERWISE NOTED



⁵ Amerigroup Corporation holds a 2% interest in Highland Investor Holdings, LLC, and ATH Holding Company, LLC holds the remaining 98% interest.

⁶ Alliance Care Management, LLC is 50% owned by Beacon Health Options, Inc. and 50% owned by HealthPlus HP, LLC.

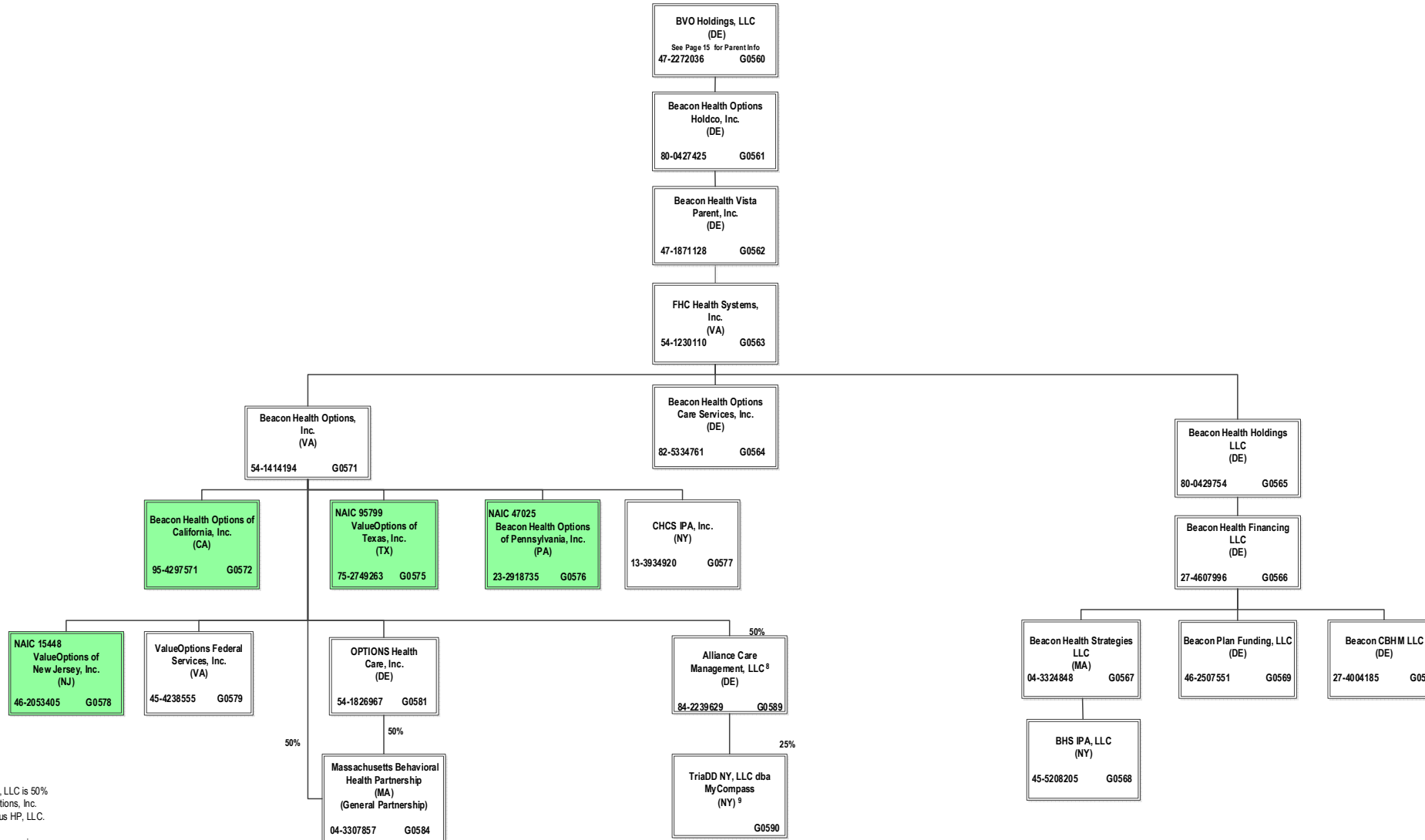
⁷ TriADD NY, LLC dba MyCompass is 25% owned by Alliance Care Management, LLC and the remaining 75% interest is owned by unaffiliated investors.

SCHEDULE Y – INFORMATION CONCERNING ACTIVITIES OF INSURER MEMBERS OF A HOLDING COMPANY GROUP

PART 1 – ORGANIZATIONAL CHART

BCBSA Licensee
Regulated Insurance Company
Regulated BCBSA Licensee

ALL SUBSIDIARIES 100% OWNED AND LLC'S ARE CONTROLLED BY MEMBERS UNLESS OTHERWISE NOTED



⁸ Alliance Care Management, LLC is 50% owned by Beacon Health Options, Inc. and 50% owned by HealthPlus HP, LLC.

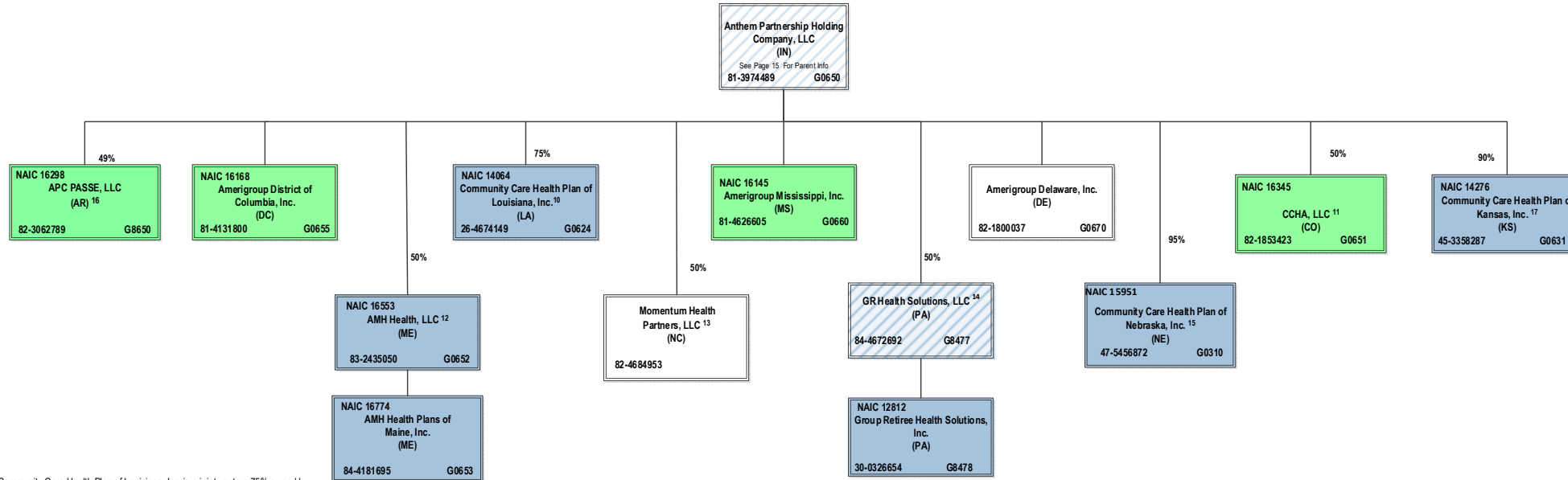
⁹ TrixDD NY, LLC dba MyCompass is 25% owned by Alliance Care Management, LLC and the remaining 75% interest is owned by unaffiliated investors.

SCHEDULE Y – INFORMATION CONCERNING ACTIVITIES OF INSURER MEMBERS OF A HOLDING COMPANY GROUP

PART 1 – ORGANIZATIONAL CHART



ALL SUBSIDIARIES 100% OWNED AND LLC'S ARE CONTROLLED BY MEMBERS UNLESS OTHERWISE NOTED



¹⁰ Community Care Health Plan of Louisiana, Inc. is a joint venture 75% owned by Anthem Partnership Holding Company, LLC and 25% owned by Louisiana Health Service & Indemnity Company d/b/a Blue Cross and Blue Shield of Louisiana (non-affiliate)

¹¹ CCHA, LLC is a joint venture 50% owned by Anthem Partnership Holding Company, LLC and 50% owned by Colorado Community Health Alliance, LLC (non-affiliate)

¹² AMH Health, LLC is a joint venture 50% owned by MaineHealth (non-affiliate) and 50% owned by Anthem Partnership Holding Company, LLC

¹³ Momentum Health Partners, LLC is a joint venture 50% owned by Anthem Partnership Holding Company, LLC and 50% owned by Blue Cross and Blue Shield of North Carolina (non-affiliate)

¹⁴ GR Health Solutions, LLC is a joint venture 50% owned by Anthem Partnership Holding Company, LLC and 50% owned by Independence Blue Cross, LLC (non-affiliate)

¹⁵ Community Care Health Plan of Nebraska, Inc. is a joint venture 95% owned by Anthem Partnership Holding Company, LLC and 5% owned by Blue Cross and Blue Shield of Nebraska, Inc. (non-affiliate)

¹⁶ APC PASSE, LLC (regulated entity) is a joint venture 49% owned by Anthem Partnership Holding Company, LLC and 51% owned by Arkansas Provider Coalition, LLC (non-affiliate)

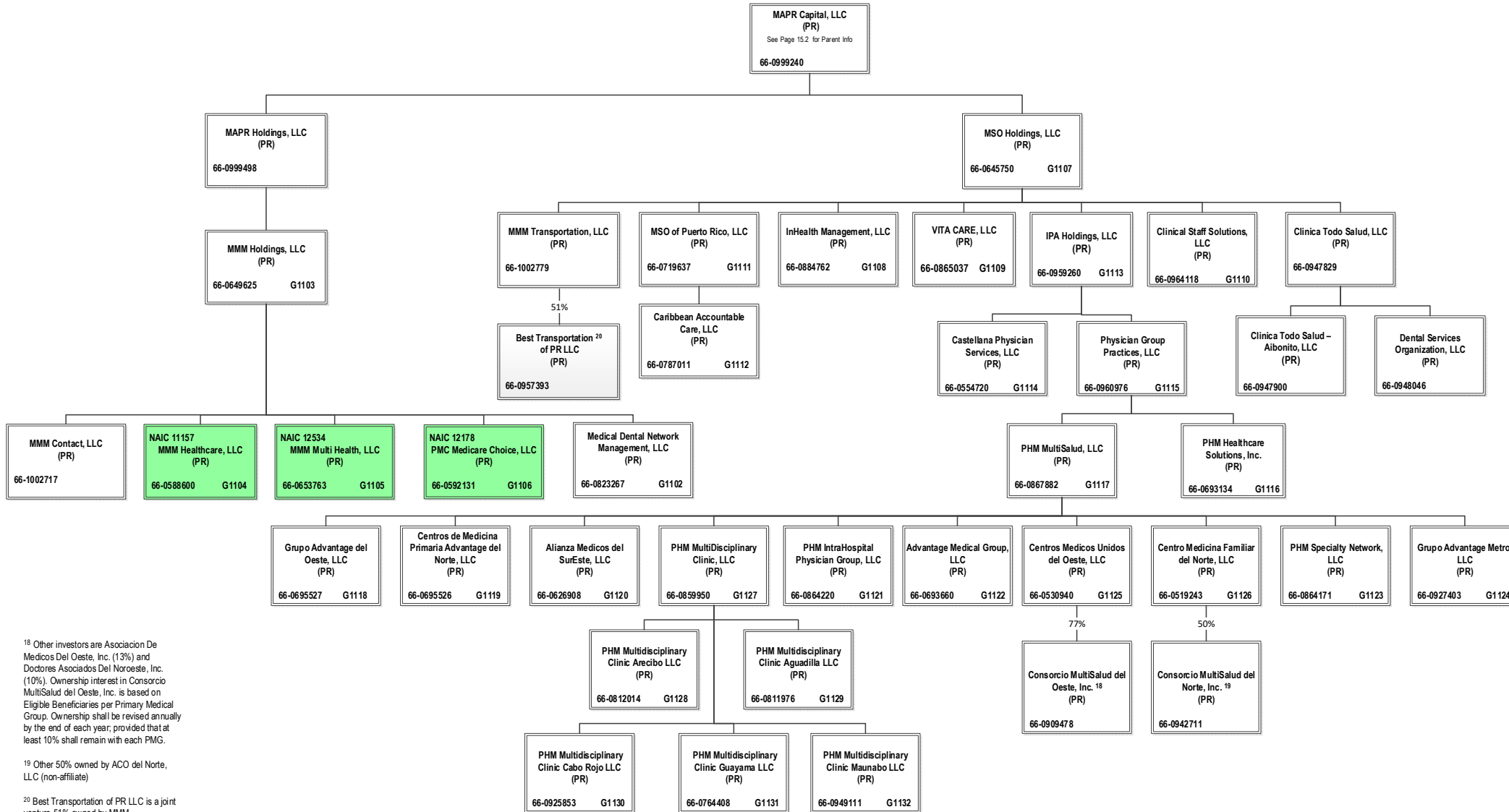
¹⁷ Community Care Health Plan of Kansas, Inc. is a joint venture 90% owned by Anthem Partnership Holding Company, LLC, 5% owned by Blue Cross and Blue Shield of Kansas (non-affiliate) and 5% owned by Blue Cross and Blue Shield of Kansas City (non-affiliate)

SCHEDULE Y – INFORMATION CONCERNING ACTIVITIES OF INSURER MEMBERS OF A HOLDING COMPANY GROUP

PART 1 – ORGANIZATIONAL CHART

ALL SUBSIDIARIES 100% OWNED AND LLC'S ARE CONTROLLED BY MEMBERS UNLESS OTHERWISE NOTED

BCBSA Licensee
Regulated Insurance Company
Regulated BCBSA Licensee



¹⁸ Other investors are Asociacion De Medicos Del Oeste, Inc. (13%) and Doctores Asociados Del Noroeste, Inc. (10%). Ownership interest in Consorcio MultiSalud del Oeste, Inc. is based on Eligible Beneficiaries per Primary Medical Group. Ownership shall be revised annually by the end of each year, provided that at least 10% shall remain with each PMG.

¹⁹ Other 50% owned by ACO del Norte, LLC (non-affiliate)

²⁰ Best Transportation of PR LLC is a joint venture 51% owned by MMM Transportation, LLC and 49% owned by Best Transportation of PR LLC

STATEMENT AS OF SEPTEMBER 30, 2022 OF THE AMH Health, LLC

SCHEDULE Y
PART 1A - DETAIL OF INSURANCE HOLDING COMPANY SYSTEM

1	2	3	4	5	6	7	8	9	10	11	12	13	14	15	16
Group Code	Group Name	NAIC Company Code	ID Number	Federal RSSD	CIK	Name of Securities Exchange if Publicly Traded (U.S. or International)	Names of Parent, Subsidiaries Or Affiliates	Domiciliary Location	Relationship to Reporting Entity	Directly Controlled by (Name of Entity/Person)	Type of Control (Ownership, Board, Management, Attorney-in-Fact, Influence, Other)	If Control is Ownership Provide Percentage	Ultimate Controlling Entity(ies)/Person(s)	Is an SCA Filing Required? (Yes/No)	*
.0671	Elevance Health, Inc.		66-0693660		0001156039		Advantage Medical Group, LLC	PR	NIA	PHM MultiSalud, LLC	Ownership	100.000	Elevance Health, Inc.	NO	
.0671	Elevance Health, Inc.		66-0626908		0001156039		Alianza Medicos del SurEste, LLC	PR	NIA	PHM MultiSalud, LLC	Ownership	100.000	Elevance Health, Inc.	NO	
.0671	Elevance Health, Inc.		37-1668303		0001156039		Pasteur Medical Hialeah Gardens, LLC	FL	NIA	Highland Acquisition Holdings, LLC	Ownership	100.000	Elevance Health, Inc.	NO	
.0671	Elevance Health, Inc.		47-3464152		0001156039		Pasteur Medical Kendall, LLC	FL	NIA	Highland Acquisition Holdings, LLC	Ownership	100.000	Elevance Health, Inc.	NO	
.0671	Elevance Health, Inc.		27-2810478		0001156039		Pasteur Medical Management, LLC	FL	NIA	Highland Acquisition Holdings, LLC	Ownership	100.000	Elevance Health, Inc.	NO	
.0671	Elevance Health, Inc.	12354	33-1217936		0001156039		Pasteur Medical Miami Gardens, LLC	FL	NIA	Highland Acquisition Holdings, LLC	Ownership	100.000	Elevance Health, Inc.	NO	
.0671	Elevance Health, Inc.		27-2651017		0001156039		Pasteur Medical North Miami Beach, LLC	FL	NIA	Highland Acquisition Holdings, LLC	Ownership	100.000	Elevance Health, Inc.	NO	
.0671	Elevance Health, Inc.		26-0813665		0001156039		Pasteur Medical Partners, LLC	FL	NIA	Highland Acquisition Holdings, LLC	Ownership	100.000	Elevance Health, Inc.	NO	
.0671	Elevance Health, Inc.	16168	66-0693134		0001156039		PHM Healthcare Solutions, Inc.	PR	NIA	Physician Group Practices, LLC	Ownership	100.000	Elevance Health, Inc.	NO	
.0671	Elevance Health, Inc.	14078	66-0864220		0001156039		PHM IntraHospital Physician Group, LLC	PR	NIA	PHM MultiSalud, LLC	Ownership	100.000	Elevance Health, Inc.	NO	
.0671	Elevance Health, Inc.	15807	66-0811976		0001156039		PHM Multidisciplinary Clinic Aguadilla LLC	PR	NIA	PHM MultiDisciplinary Clinic, LLC	Ownership	100.000	Elevance Health, Inc.	NO	
.0671	Elevance Health, Inc.		66-0812014		0001156039		PHM Multidisciplinary Clinic Arcibo LLC	PR	NIA	PHM MultiDisciplinary Clinic, LLC	Ownership	100.000	Elevance Health, Inc.	NO	
.0671	Elevance Health, Inc.	95832	66-0925853		0001156039		PHM Multidisciplinary Clinic Cabo Rojo LLC	PR	NIA	PHM MultiDisciplinary Clinic, LLC	Ownership	100.000	Elevance Health, Inc.	NO	
.0671	Elevance Health, Inc.	16145	66-0764408		0001156039		PHM Multidisciplinary Clinic Guayama LLC	PR	NIA	PHM MultiDisciplinary Clinic, LLC	Ownership	100.000	Elevance Health, Inc.	NO	
.0671	Elevance Health, Inc.	95373	66-0949111		0001156039		PHM Multidisciplinary Clinic Maunabo LLC	PR	NIA	PHM MultiDisciplinary Clinic, LLC	Ownership	100.000	Elevance Health, Inc.	NO	
.0671	Elevance Health, Inc.	10767	66-0859950		0001156039		PHM Multidisciplinary Clinic, LLC	PR	NIA	PHM MultiSalud, LLC	Ownership	100.000	Elevance Health, Inc.	NO	
.0671	Elevance Health, Inc.	15994	66-0867882		0001156039		PHM MultiSalud, LLC	PR	NIA	Physician Group Practices, LLC	Ownership	100.000	Elevance Health, Inc.	NO	
.0671	Elevance Health, Inc.		66-0864171		0001156039		PHM Specialty Network, LLC	PR	NIA	PHM MultiSalud, LLC	Ownership	100.000	Elevance Health, Inc.	NO	
.0671	Elevance Health, Inc.		66-0960976		0001156039		Physician Group Practices, LLC	PR	NIA	IPA Holdings, LLC	Ownership	100.000	Elevance Health, Inc.	NO	
.0671	Elevance Health, Inc.	12178	66-0592131		0001156039		PMC Medicare Choice, LLC	PR	IA	MM Holdings, LLC	Ownership	100.000	Elevance Health, Inc.	NO	
.0671	Elevance Health, Inc.	12941	56-2396739		0001156039		Resolution Health, Inc.	DE	NIA	Anthem Southeast, Inc.	Ownership	100.000	Elevance Health, Inc.	NO	
.0671	Elevance Health, Inc.	95314	47-0851593		0001156039		RightCHOICE Managed Care, Inc.	DE	NIA	Anthem Holding Corp.	Ownership	100.000	Elevance Health, Inc.	NO	
.0671	Elevance Health, Inc.	11011	84-0747736		0001156039		Rocky Mountain Hospital and Medical Service, Inc.	CO	IA	ATH Holding Company, LLC	Ownership	100.000	Elevance Health, Inc.	NO	
.0671	Elevance Health, Inc.	12229	20-0473316		0001156039		SellCore, Inc.	DE	NIA	Elevance Health, Inc.	Ownership	100.000	Elevance Health, Inc.	NO	
.0671	Elevance Health, Inc.	13726	27-0945036		0001156039		Simply Healthcare Plans, Inc.	FL	IA	AMERIGROUP Corporation	Ownership	100.000	Elevance Health, Inc.	NO	
.0671	Elevance Health, Inc.	16553	55-0712302		0001156039		Southeast Services, Inc.	VA	NIA	Anthem Southeast, Inc.	Ownership	100.000	Elevance Health, Inc.	NO	0105
.0671	Elevance Health, Inc.	62825	45-4071004		0001156039		State Sponsored Services, Inc.	IN	NIA	UNICARE Specialty Services, Inc.	Ownership	100.000	Elevance Health, Inc.	NO	
.0671	Elevance Health, Inc.		45-5443372		0001156039		The Elevance Health Companies of California, Inc.	CA	NIA	ATH Holding Company, LLC	Ownership	100.000	Elevance Health, Inc.	NO	
.0671	Elevance Health, Inc.	95120	35-1835818		0001156039		The Elevance Health Companies, Inc.	IN	NIA	ATH Holding Company, LLC	Ownership	100.000	Elevance Health, Inc.	NO	
.0671	Elevance Health, Inc.	52618	31-1705652		0001156039		TriadDD NY, LLC dba MyCompass	NY	NIA	Alliance Care Management, LLC	Ownership	25.000	Elevance Health, Inc.	NO	0113
.0671	Elevance Health, Inc.	53759	43-1967924		0001156039		TrustSolutions, LLC	WI	NIA	Federal Government Solutions, LLC	Ownership	100.000	Elevance Health, Inc.	NO	
.0671	Elevance Health, Inc.	11810	84-1620480	40003317	0001156039		UNICARE Health Plan of West Virginia, Inc.	WV	IA	UNICARE National Services, Inc.	Ownership	100.000	Elevance Health, Inc.	NO	
.0671	Elevance Health, Inc.	60217	36-3899137		0001156039		UNICARE Illinois Services, Inc.	IL	NIA	UNICARE National Services, Inc.	Ownership	100.000	Elevance Health, Inc.	NO	
.0671	Elevance Health, Inc.	80314	52-0913817		0001156039		UNICARE Life & Health Insurance Company	IN	IA	UNICARE National Services, Inc.	Ownership	100.000	Elevance Health, Inc.	NO	
.0671	Elevance Health, Inc.	28207	95-4635507		0001156039		UNICARE National Services, Inc.	DE	NIA	Anthem Holding Corp.	Ownership	100.000	Elevance Health, Inc.	NO	
.0671	Elevance Health, Inc.	15543	77-0494551		0001156039		UNICARE Specialty Services, Inc.	DE	NIA	Anthem Holding Corp.	Ownership	100.000	Elevance Health, Inc.	NO	
.0671	Elevance Health, Inc.	13573	45-4238555		0001156039		ValueOptions Federal Services, Inc.	VA	NIA	Beacon Health Options, Inc.	Ownership	100.000	Elevance Health, Inc.	NO	
.0671	Elevance Health, Inc.	15448	46-2053405		0001156039		ValueOptions of New Jersey, Inc.	NJ	IA	Beacon Health Options, Inc.	Ownership	100.000	Elevance Health, Inc.	NO	
.0671	Elevance Health, Inc.	95799	75-2749263		0001156039		ValueOptions of Texas, Inc.	TX	IA	Beacon Health Options, Inc.	Ownership	100.000	Elevance Health, Inc.	NO	
.0671	Elevance Health, Inc.		66-0865037		0001156039		VITA CARE, LLC	PR	NIA	MSO Holdings, LLC	Ownership	100.000	Elevance Health, Inc.	NO	
.0671	Elevance Health, Inc.		20-0660563		0001156039		WellMax Health Medical Centers, LLC	FL	NIA	Delivery Network, LLC	Ownership	100.000	Elevance Health, Inc.	NO	
.0671	Elevance Health, Inc.		20-0660644		0001156039		WellMax Health Physicians Network, LLC	FL	NIA	Delivery Network, LLC	Ownership	100.000	Elevance Health, Inc.	NO	
.0671	Elevance Health, Inc.		20-4405193		0001156039		WellPoint Acquisition, LLC	IN	NIA	Elevance Health, Inc.	Ownership	100.000	Elevance Health, Inc.	NO	
.0671	Elevance Health, Inc.	16298	95-4640531		0001156039		WellPoint California Services, Inc.	DE	NIA	Anthem Holding Corp.	Ownership	100.000	Elevance Health, Inc.	NO	0115
.0671	Elevance Health, Inc.		95-4657170		0001156039		WellPoint Dental Services, Inc.	DE	NIA	UNICARE Specialty Services, Inc.	Ownership	100.000	Elevance Health, Inc.	NO	
.0671	Elevance Health, Inc.		81-2874917		0001156039		WellPoint Health Solutions, Inc.	DE	NIA	Federal Government Solutions, LLC	Ownership	100.000	Elevance Health, Inc.	NO	
.0671	Elevance Health, Inc.		20-3620996		0001156039		WellPoint Holding Corp	DE	NIA	Elevance Health, Inc.	Ownership	100.000	Elevance Health, Inc.	NO	
.0671	Elevance Health, Inc.		45-2736438		0001156039		WellPoint Information Technology Services, Inc.	CA	NIA	Blue Cross of California	Ownership	100.000	Elevance Health, Inc.	NO	
.0671	Elevance Health, Inc.		36-4595641		0001156039		WellPoint Insurance Services, Inc.	HI	NIA	Elevance Health, Inc.	Ownership	100.000	Elevance Health, Inc.	NO	
.0671	Elevance Health, Inc.		47-2546820		0001156039		WellPoint Military Care Corporation	IN	NIA	Federal Government Solutions, LLC	Ownership	100.000	Elevance Health, Inc.	NO	
.0671	Elevance Health, Inc.	15929	47-5569628		0001156039		Wisconsin Collaborative Insurance Company	WI	IA	Crossroads Acquisition Corp.	Ownership	100.000	Elevance Health, Inc.	NO	

STATEMENT AS OF SEPTEMBER 30, 2022 OF THE AMH Health, LLC

SCHEDULE Y
PART 1A - DETAIL OF INSURANCE HOLDING COMPANY SYSTEM

1	2	3	4	5	6	7	8	9	10	11	12	13	14	15	16
Group Code	Group Name	NAIC Company Code	ID Number	Federal RSSD	CIK	Name of Securities Exchange if Publicly Traded (U.S. or International)	Names of Parent, Subsidiaries Or Affiliates	Domiciliary Location	Relationship to Reporting Entity	Directly Controlled by (Name of Entity/Person)	Type of Control (Ownership, Board, Management, Attorney-in-Fact, Influence, Other)	If Control is Ownership Provide Percentage	Ultimate Controlling Entity(ies)/Person(s)	Is an SCA Filing Required? (Yes/No)	*
	Elevalence Health, Inc.		27-4607996		0001156039		Beacon CBHM LLC	DE	NIA	Beacon Health Financing LLC	Ownership	100.000	Elevalence Health, Inc.	NO	
	Elevalence Health, Inc.		80-0429754		0001156039		Beacon Health Financing LLC	DE	NIA	Beacon Health Holdings, LLC	Ownership	100.000	Elevalence Health, Inc.	NO	
	Elevalence Health, Inc.		82-5334761		0001156039		Beacon Health Holdings, LLC	DE	NIA	FHC Health Systems, Inc.	Ownership	100.000	Elevalence Health, Inc.	NO	
	Elevalence Health, Inc.		95-4297571		0001156039		Beacon Health Options Care Services, Inc.	DE	NIA	FHC Health Systems, Inc.	Ownership	100.000	Elevalence Health, Inc.	NO	
	Elevalence Health, Inc.	47025	23-2918735		0001156039		Beacon Health Options Holdco, Inc.	DE	NIA	BVO Holdings, LLC	Ownership	100.000	Elevalence Health, Inc.	NO	
	Elevalence Health, Inc.		54-1414194		0001156039		Beacon Health Options of California, Inc.	CA	IA	Beacon Health Options, Inc.	Ownership	100.000	Elevalence Health, Inc.	NO	0101
	Elevalence Health, Inc.		47-1871128		0001156039		Beacon Health Options of Pennsylvania, Inc.	PA	IA	Beacon Health Options, Inc.	Ownership	100.000	Elevalence Health, Inc.	NO	
	Elevalence Health, Inc.		46-2507551		0001156039		Beacon Health Options, Inc.	VA	NIA	FHC Health Systems, Inc.	Ownership	100.000	Elevalence Health, Inc.	NO	
	Elevalence Health, Inc.		66-0957393		0001156039		Beacon Health Strategies LLC	MA	NIA	Beacon Health Financing LLC	Ownership	100.000	Elevalence Health, Inc.	NO	
	Elevalence Health, Inc.		45-5208205		0001156039		Beacon Health Vista Parent, Inc.	DE	NIA	Beacon Health Options Holdco, Inc.	Ownership	100.000	Elevalence Health, Inc.	NO	
	Elevalence Health, Inc.	96962	58-1638390		0001156039		Beacon Plan Funding, LLC	DE	NIA	Beacon Health Financing LLC	Ownership	100.000	Elevalence Health, Inc.	NO	
	Elevalence Health, Inc.	54003	39-0138065		0001156039		Best Transportation, LLC	PR	NIA	MM Transportation, LLC	Ownership	51.000	Elevalence Health, Inc.	NO	
	Elevalence Health, Inc.		95-3760980		0001156039		BHS IPA, LLC	NY	NIA	Beacon Health Strategies LLC	Ownership	100.000	Elevalence Health, Inc.	NO	
	Elevalence Health, Inc.		20-2994048		0001156039		Blue Cross Blue Shield Healthcare Plan of Georgia, Inc.	GA	IA	Cerulean Companies, Inc.	Ownership	100.000	Elevalence Health, Inc.	NO	
	Elevalence Health, Inc.		47-2272036		0001156039		Blue Cross Blue Shield of Wisconsin	WI	IA	Crossroads Acquisition Corp.	Ownership	100.000	Elevalence Health, Inc.	NO	
	Elevalence Health, Inc.		98-1492098		0001156039		Blue Cross of California	CA	IA	WellPoint California Services, Inc.	Ownership	100.000	Elevalence Health, Inc.	NO	0101
	Elevalence Health, Inc.		84-1782311		0001156039		Blue Cross of California Partnership Plan, Inc.	CA	IA	Blue Cross of California	Ownership	100.000	Elevalence Health, Inc.	NO	0101
	Elevalence Health, Inc.		46-0613946		0001156039		BVO Holdings, LLC	DE	NIA	Elevalence Health, Inc.	Ownership	100.000	Elevalence Health, Inc.	NO	
	Elevalence Health, Inc.		82-3027094		0001156039		Carelon Digital Platforms Israel Ltd.	ISR	NIA	Legato Holdings I, Inc.	Ownership	100.000	Elevalence Health, Inc.	NO	
	Elevalence Health, Inc.		82-3000542		0001156039		Carelon Digital Platforms, Inc.	IN	NIA	ATH Holding Company, LLC	Ownership	100.000	Elevalence Health, Inc.	NO	
	Elevalence Health, Inc.		47-3025203		0001156039		Carelon Employment Company, LLC.	IN	NIA	The Elevalence Health Companies, Inc.	Ownership	100.000	Elevalence Health, Inc.	NO	
	Elevalence Health, Inc.		86-2365191		0001156039		Carelon Holdings, Inc.	IN	NIA	Elevalence Health, Inc.	Ownership	100.000	Elevalence Health, Inc.	NO	
	Elevalence Health, Inc.	13562	38-3795280		0001156039		Carelon Insights, Inc.	IN	NIA	Carelon Holdings, Inc.	Ownership	100.000	Elevalence Health, Inc.	NO	
	Elevalence Health, Inc.	13605	26-4001602		0001156039		Carelon Rx Pharmacy, Inc.	DE	NIA	IngenioRx, Inc.	Ownership	100.000	Elevalence Health, Inc.	NO	
	Elevalence Health, Inc.		95-4694706		0001156039		CareMore Health IPA of New York, Inc.	NY	NIA	CareMore Health System	Ownership	100.000	Elevalence Health, Inc.	NO	
	Elevalence Health, Inc.		38-3795280		0001156039		CareMore Health Plan	CA	IA	CareMore Health System	Ownership	100.000	Elevalence Health, Inc.	NO	0101
	Elevalence Health, Inc.		26-4001602		0001156039		CareMore Health Plan of Arizona, Inc.	AZ	IA	CareMore Health System	Ownership	100.000	Elevalence Health, Inc.	NO	
	Elevalence Health, Inc.		27-1625392		0001156039		CareMore Health Plan of Nevada	NV	IA	CareMore Health System	Ownership	100.000	Elevalence Health, Inc.	NO	
	Elevalence Health, Inc.		20-2076421		0001156039		CareMore Health Plan of Texas, Inc.	TX	NIA	CareMore Health System	Ownership	100.000	Elevalence Health, Inc.	NO	
	Elevalence Health, Inc.		32-0373216		0001156039		CareMore Health System	CA	NIA	ATH Holding Company, LLC	Ownership	100.000	Elevalence Health, Inc.	NO	
	Elevalence Health, Inc.		66-0787011		0001156039		CareMore, LLC	IN	NIA	CareMore Health System	Ownership	100.000	Elevalence Health, Inc.	NO	
0671	Elevalence Health, Inc.		66-0554720		0001156039		Caribbean Accountable Care, LLC	PR	NIA	MSO of Puerto Rico, LLC	Ownership	100.000	Elevalence Health, Inc.	NO	
	Elevalence Health, Inc.		82-1853423		0001156039		Castellana Physician Services, LLC	PR	NIA	IPA Holdings, LLC	Ownership	100.000	Elevalence Health, Inc.	NO	
	Elevalence Health, Inc.				0001156039		CCHA, LLC	CO	IA	Anthem Partnership Holding Company, LLC	Ownership	50.000	Elevalence Health, Inc.	NO	0102

STATEMENT AS OF SEPTEMBER 30, 2022 OF THE AMH Health, LLC

SCHEDULE Y
PART 1A - DETAIL OF INSURANCE HOLDING COMPANY SYSTEM

1	2	3	4	5	6	7	8	9	10	11	12	13	14	15	16
Group Code	Group Name	NAIC Company Code	ID Number	Federal RSSD	CIK	Name of Securities Exchange if Publicly Traded (U.S. or International)	Names of Parent, Subsidiaries Or Affiliates	Domiciliary Location	Relationship to Reporting Entity	Directly Controlled by (Name of Entity/Person)	Type of Control (Ownership, Board, Management, Attorney-in-Fact, Influence, Other)	If Control is Ownership Provide Percentage	Ultimate Controlling Entity(ies)/Person(s)	Is an SCA Filing Required? (Yes/No)	*
	Elevance Health, Inc.		66-0695526		0001156039		Centros de Medicina Primaria Advantage del Norte, LLC	PR	NIA	PHM MultiSalud, LLC	Ownership	100.000	Elevance Health, Inc.	NO	
	Elevance Health, Inc.		66-0519243		0001156039		Centros Medicina Familiar del Norte, LLC	PR	NIA	PHM MultiSalud, LLC	Ownership	100.000	Elevance Health, Inc.	NO	
	Elevance Health, Inc.		66-0530940		0001156039		Centros Medicos Unidos del Oeste, LLC	PR	NIA	PHM MultiSalud, LLC	Ownership	100.000	Elevance Health, Inc.	NO	
	Elevance Health, Inc.		58-2217138		0001156039		Cherulean Companies, Inc.	GA	NIA	Anthem Holding Corp.	Ownership	100.000	Elevance Health, Inc.	NO	
	Elevance Health, Inc.		13-39324920		0001156039		CHCS IPA, Inc.	NY	NIA	Beacon Health Options, Inc.	Ownership	100.000	Elevance Health, Inc.	NO	
.0671	Elevance Health, Inc.		39-1413702		0001156039		Claim Management Services, Inc.	WI	NIA	Blue Cross Blue Shield of Wisconsin	Ownership	100.000	Elevance Health, Inc.	NO	
.0671	Elevance Health, Inc.		66-0947829		0001156039		Clinica Todo Salud, LLC	PR	NIA	MSO Holdings, LLC	Ownership	100.000	Elevance Health, Inc.	NO	
.0671	Elevance Health, Inc.		66-0947900		0001156039		Clinica Todo Salud-Aibonito, LLC	PR	NIA	Clinica Todo Salud, LLC	Ownership	100.000	Elevance Health, Inc.	NO	
.0671	Elevance Health, Inc.		66-0964118		0001156039		Clinical Staff Solutions, LLC	PR	NIA	MSO Holdings, LLC	Ownership	100.000	Elevance Health, Inc.	NO	
.0671	Elevance Health, Inc.	14276	45-3358287		0001156039		Community Care Health Plan of Kansas, Inc.	KS	IA	Anthem Partnership Holding Company, LLC	Ownership	90.000	Elevance Health, Inc.	NO	.0114
	Elevance Health, Inc.						Community Care Health Plan of Louisiana, Inc.	LA	IA	Anthem Partnership Holding Company, LLC	Ownership	75.000	Elevance Health, Inc.	NO	.0104
.0671	Elevance Health, Inc.	14064	26-4674149		0001156039		Community Care Health Plan of Nebraska, Inc.	NE	IA	Anthem Partnership Holding Company, LLC	Ownership	95.000	Elevance Health, Inc.	NO	.0112
.0671	Elevance Health, Inc.	15951	47-5456872		0001156039		Community Care Health Plan of Nevada, Inc.	NV	IA	AMERIGROUP Corporation	Ownership	100.000	Elevance Health, Inc.	NO	
.0671	Elevance Health, Inc.	12586	20-3317697		0001156039		Community Insurance Company	OH	IA	ATH Holding Company, LLC	Ownership	100.000	Elevance Health, Inc.	NO	
.0671	Elevance Health, Inc.	10345	31-1440175		0001156039		CompCare Health Services Insurance Corporation	WI	IA	Blue Cross Blue Shield of Wisconsin	Ownership	100.000	Elevance Health, Inc.	NO	
.0671	Elevance Health, Inc.	95693	39-1462554		0001156039		Consorcio MultiSalud del Norte, Inc.	PR	NIA	Centros Medicina Familiar del Norte, LLC	Ownership	50.000	Elevance Health, Inc.	NO	.0109
.0671	Elevance Health, Inc.		66-0942711		0001156039		Consorcio MultiSalud del Oeste, Inc.	PR	NIA	Centros Medicos Unidos del Oeste, LLC	Ownership	77.000	Elevance Health, Inc.	NO	.0103
.0671	Elevance Health, Inc.		66-0909478		0001156039		Crossroads Acquisition Corp.	DE	NIA	Anthem Holding Corp.	Ownership	100.000	Elevance Health, Inc.	NO	
.0671	Elevance Health, Inc.		20-0334650		0001156039		DeCare Analytics, LLC	MN	NIA	DeCare Dental, LLC	Ownership	100.000	Elevance Health, Inc.	NO	
.0671	Elevance Health, Inc.		41-1905556		0001156039		DeCare Dental Health International, LLC	MN	NIA	DeCare Dental, LLC	Ownership	100.000	Elevance Health, Inc.	NO	
.0671	Elevance Health, Inc.		02-0574609		0001156039		DeCare Dental Insurance Ireland, Ltd.	IRL	NIA	DeCare Dental, LLC	Ownership	100.000	Elevance Health, Inc.	NO	
.0671	Elevance Health, Inc.		73-1665525		0001156039		DeCare Dental Networks, LLC	MN	NIA	DeCare Dental, LLC	Ownership	100.000	Elevance Health, Inc.	NO	
.0671	Elevance Health, Inc.		01-0822645		0001156039		DeCare Dental, LLC	MN	NIA	Anthem Holding Corp.	Ownership	100.000	Elevance Health, Inc.	NO	
.0671	Elevance Health, Inc.				0001156039		DeCare Operations Ireland, Limited	IRL	NIA	DeCare Dental, LLC	Ownership	100.000	Elevance Health, Inc.	NO	
.0671	Elevance Health, Inc.		20-0660775		0001156039		Delivery Network, LLC	FL	NIA	Highland Acquisition Holdings, LLC	Ownership	100.000	Elevance Health, Inc.	NO	
.0671	Elevance Health, Inc.		66-0948046		0001156039		Dental Services Organization, LLC	PR	NIA	Clinica Todo Salud, LLC	Ownership	100.000	Elevance Health, Inc.	NO	
.0671	Elevance Health, Inc.		26-2544715		0001156039		Designated Agent Company, Inc.	KY	NIA	Anthem Health Plans of Kentucky, Inc.	Ownership	100.000	Elevance Health, Inc.	NO	
.0671	Elevance Health, Inc.		27-2844373		0001156039		EasyScripts Cutler Bay, LLC	FL	NIA	Highland Acquisition Holdings, LLC	Ownership	100.000	Elevance Health, Inc.	NO	
.0671	Elevance Health, Inc.		26-2974996		0001156039		EasyScripts Hialeah, LLC	FL	NIA	Highland Acquisition Holdings, LLC	Ownership	100.000	Elevance Health, Inc.	NO	
.0671	Elevance Health, Inc.		30-0478573		0001156039		EasyScripts LLC	FL	NIA	Highland Acquisition Holdings, LLC	Ownership	100.000	Elevance Health, Inc.	NO	
.0671	Elevance Health, Inc.		46-0613819		0001156039		EasyScripts Westchester, LLC	FL	NIA	Highland Acquisition Holdings, LLC	Ownership	100.000	Elevance Health, Inc.	NO	
.0671	Elevance Health, Inc.		13-3934328		0001156039		EHC Benefits Agency, Inc.	NY	NIA	WellPoint Holding Corp	Ownership	100.000	Elevance Health, Inc.	NO	
.0671	Elevance Health, Inc.		35-2145715		0001156039	New York Stock Exchange (NYSE)	Elevance Health, Inc.	IN	UIP				Elevance Health, Inc.	NO	
.0671	Elevance Health, Inc.	55093	23-7391136		0001156039		Empire HealthChoice Assurance, Inc.	NY	IA	WellPoint Holding Corp	Ownership	100.000	Elevance Health, Inc.	NO	
.0671	Elevance Health, Inc.	95433	13-3874803		0001156039		Empire HealthChoice HMO, Inc.	NY	IA	Empire HealthChoice Assurance, Inc.	Ownership	100.000	Elevance Health, Inc.	NO	
.0671	Elevance Health, Inc.		26-4286154		0001156039		Federal Government Solutions, LLC	WI	NIA	ATH Holding Company, LLC	Ownership	100.000	Elevance Health, Inc.	NO	
.0671	Elevance Health, Inc.		54-1230110		0001156039		FHC Health Systems, Inc.	VA	NIA	Beacon Health Vista Parent, Inc.	Ownership	100.000	Elevance Health, Inc.	NO	
.0671	Elevance Health, Inc.	10119	41-2128275		0001156039		Freedom Health, Inc.	FL	IA	AMERIGROUP Corporation	Ownership	100.000	Elevance Health, Inc.	NO	
.0671	Elevance Health, Inc.				0001156039		Freedom SPV, Inc.	DE	NIA	ATH Holding Company, LLC	Ownership	100.000	Elevance Health, Inc.	NO	
.0671	Elevance Health, Inc.		95-2907752		0001156039		Golden West Health Plan, Inc.	CA	IA	WellPoint California Services, Inc.	Ownership	100.000	Elevance Health, Inc.	NO	.0101
.0671	Elevance Health, Inc.		84-4672692		0001156039		GR Health Solutions LLC	PA	NIA	Anthem Partnership Holding Company, LLC	Ownership	50.000	Elevance Health, Inc.	NO	.0108
.0671	Elevance Health, Inc.	97217	58-1473042		0001156039		Greater Georgia Life Insurance Company	GA	IA	Blue Cross Blue Shield Healthcare Plan of Georgia, Inc.	Ownership	100.000	Elevance Health, Inc.	NO	
.0671	Elevance Health, Inc.	12812	30-0326654		0001156039		Group Retiree Health Solutions, Inc.	PA	IA	GR Health Solutions LLC	Ownership	100.000	Elevance Health, Inc.	NO	
.0671	Elevance Health, Inc.		66-0695527		0001156039		Grupo Advantage del Oeste, LLC	PR	NIA	PHM MultiSalud, LLC	Ownership	100.000	Elevance Health, Inc.	NO	
.0671	Elevance Health, Inc.		66-0927403		0001156039		Grupo Advantage Metro, LLC	PR	NIA	PHM MultiSalud, LLC	Ownership	100.000	Elevance Health, Inc.	NO	
.0671	Elevance Health, Inc.	16426	82-1820099		0001156039		Health Colorado, Inc.	CO	IA	Beacon Health Options, Inc.	Ownership	16.670	Elevance Health, Inc.	NO	.0111
.0671	Elevance Health, Inc.		51-0365660		0001156039		Health Core, Inc.	DE	NIA	Arcus Enterprises, Inc.	Ownership	100.000	Elevance Health, Inc.	NO	
.0671	Elevance Health, Inc.		54-1237939		0001156039		Health Management Corporation	VA	NIA	Southeast Services, Inc.	Ownership	100.000	Elevance Health, Inc.	NO	
.0671	Elevance Health, Inc.		36-3897701		0001156039		Health Ventures Partner, L.L.C.	IL	NIA	UNICARE National Services, Inc.	Ownership	100.000	Elevance Health, Inc.	NO	

STATEMENT AS OF SEPTEMBER 30, 2022 OF THE AMH Health, LLC

SCHEDULE Y

PART 1A - DETAIL OF INSURANCE HOLDING COMPANY SYSTEM

1	2	3	4	5	6	7	8	9	10	11	12	13	14	15	16
Group Code	Group Name	NAIC Company Code	ID Number	Federal RSSD	CIK	Name of Securities Exchange if Publicly Traded (U.S. or International)	Names of Parent, Subsidiaries Or Affiliates	Domiciliary Location	Relationship to Reporting Entity	Directly Controlled by (Name of Entity/Person)	Type of Control (Ownership, Board, Management, Attorney-in-Fact, Influence, Other)	If Control is Ownership Provide Percentage	Ultimate Controlling Entity(ies)/Person(s)	Is an SCA Filing Required? (Yes/No)	*
.0671	Elevance Health, Inc.	95169	54-1356687		0001156039		HealthKeepers, Inc.	VA	IA	Anthem Southeast, Inc.	Ownership	92.510	Elevance Health, Inc.	NO	
.0671	Elevance Health, Inc.	95169	54-1356687		0001156039		HealthKeepers, Inc.	VA	IA	UNICARE National Services, Inc.	Ownership	7.490	Elevance Health, Inc.	NO	
.0671	Elevance Health, Inc.	96475	43-1616135		0001156039		HealthLink HMO, Inc.	MO	IA	HealthLink, Inc.	Ownership	100.000	Elevance Health, Inc.	NO	
.0671	Elevance Health, Inc.		43-1364135		0001156039		HealthLink, Inc.	IL	NIA	RightCHOICE Managed Care, Inc.	Ownership	100.000	Elevance Health, Inc.	NO	
.0671	Elevance Health, Inc.	16574	13-3865627		0001156039		HealthPlus HP, LLC	NY	IA	AMERIGROUP Corporation	Ownership	100.000	Elevance Health, Inc.	NO	0100
.0671	Elevance Health, Inc.	10122	20-0982649		0001156039		HealthSun Health Plans, Inc.	FL	IA	AMERIGROUP Corporation	Ownership	100.000	Elevance Health, Inc.	NO	
.0671	Elevance Health, Inc.		46-3434016		0001156039		HealthSun Physicians Network I, LLC	FL	NIA	HealthSun Physicians Network, LLC	Ownership	100.000	Elevance Health, Inc.	NO	
.0671	Elevance Health, Inc.		46-5250294		0001156039		HealthSun Physicians Network, LLC	FL	NIA	Delivery Network, LLC	Ownership	100.000	Elevance Health, Inc.	NO	
.0671	Elevance Health, Inc.	78972	86-0257201		0001156039		Healthy Alliance Life Insurance Company	MO	IA	RightCHOICE Managed Care, Inc.	Ownership	100.000	Elevance Health, Inc.	NO	
.0671	Elevance Health, Inc.		47-3953545		0001156039		HEP AP Holdings, Inc.	DE	NIA	Imaging Management Holdings, L.L.C.	Ownership	100.000	Elevance Health, Inc.	NO	
.0671	Elevance Health, Inc.		81-3471305		0001156039		Highland Acquisition Holdings, LLC	DE	NIA	Highland Intermediate Holdings, LLC	Ownership	100.000	Elevance Health, Inc.	NO	
.0671	Elevance Health, Inc.		81-3487249		0001156039		Highland Intermediate Holdings, LLC	DE	NIA	Highland Investor Holdings, LLC	Ownership	100.000	Elevance Health, Inc.	NO	
.0671	Elevance Health, Inc.		81-3493196		0001156039		Highland Investor Holdings, LLC	DE	NIA	ATH Holding Company, LLC	Ownership	98.000	Elevance Health, Inc.	NO	
.0671	Elevance Health, Inc.		81-3493196		0001156039		Highland Investor Holdings, LLC	DE	NIA	AMERIGROUP Corporation	Ownership	2.000	Elevance Health, Inc.	NO	
.0671	Elevance Health, Inc.	95473	84-1017384		0001156039		HMO Colorado, Inc.	CO	IA	Rocky Mountain Hospital and Medical Service, Inc.	Ownership	100.000	Elevance Health, Inc.	NO	
.0671	Elevance Health, Inc.	95358	37-1216698		0001156039		HMO Missouri, Inc.	MO	IA	RightCHOICE Managed Care, Inc.	Ownership	100.000	Elevance Health, Inc.	NO	
.0671	Elevance Health, Inc.		83-2158120		0001156039		IEC Group Holdings, Inc.	ID	NIA	ATH Holding Company, LLC	Ownership	100.000	Elevance Health, Inc.	NO	
.0671	Elevance Health, Inc.		82-0497661		0001156039		IEC Group, Inc. d/b/a AmeriBen	ID	NIA	IEC Group Holdings, Inc.	Ownership	100.000	Elevance Health, Inc.	NO	
.0671	Elevance Health, Inc.		75-2619605		0001156039		Imaging Management Holdings, L.L.C.	DE	NIA	ATH Holding Company, LLC	Ownership	100.000	Elevance Health, Inc.	NO	
.0671	Elevance Health, Inc.		82-3062245		0001156039		IngeniorX, Inc.	IN	NIA	Carelon Holdings, Inc.	Ownership	100.000	Elevance Health, Inc.	NO	
.0671	Elevance Health, Inc.		66-0884762		0001156039		InHealth Management, LLC	PR	NIA	MSO Holdings, LLC	Ownership	100.000	Elevance Health, Inc.	NO	
.0671	Elevance Health, Inc.	15454	45-3027404		0001156039		Integra MLC, Inc.	IA	IA	ATH Holding Company, LLC	Ownership	100.000	Elevance Health, Inc.	NO	
.0671	Elevance Health, Inc.		66-0959260		0001156039		IPA Holdings, LLC	PR	NIA	MSO Holdings, LLC	Ownership	100.000	Elevance Health, Inc.	NO	
.0671	Elevance Health, Inc.				0001156039		Legato Health Technologies Ireland, Ltd	JRL	NIA	Legato Holdings I, Inc.	Ownership	100.000	Elevance Health, Inc.	NO	
.0671	Elevance Health, Inc.		98-1397080		0001156039		Legato Health Technologies LLP	IN	NIA	Legato Holdings I, Inc.	Ownership	99.000	Elevance Health, Inc.	NO	
.0671	Elevance Health, Inc.		98-1397080		0001156039		Legato Health Technologies LLP	IN	NIA	Legato Holdings II, LLC	Ownership	1.000	Elevance Health, Inc.	NO	
.0671	Elevance Health, Inc.		98-1490582		0001156039		Legato Health Technologies Philippines, Inc.	PHL	NIA	Legato Holdings I, Inc.	Ownership	100.000	Elevance Health, Inc.	NO	0106
.0671	Elevance Health, Inc.				0001156039		Legato Health Technologies Puerto Rico, LLC	PR	NIA	Legato Holdings I, Inc.	Ownership	100.000	Elevance Health, Inc.	NO	
.0671	Elevance Health, Inc.		87-2164713		0001156039		Legato Health Technologies, U.S., Inc	IN	NIA	Legato Holdings I, Inc.	Ownership	100.000	Elevance Health, Inc.	NO	
.0671	Elevance Health, Inc.		82-3030791		0001156039		Legato Holdings I, Inc.	IN	NIA	Elevance Health, Inc.	Ownership	100.000	Elevance Health, Inc.	NO	
.0671	Elevance Health, Inc.		82-3031178		0001156039		Legato Holdings II, LLC	IN	NIA	Legato Holdings I, Inc.	Ownership	100.000	Elevance Health, Inc.	NO	
.0671	Elevance Health, Inc.		02-0581429		0001156039		Living Complete Technologies, Inc.	MD	NIA	ATH Holding Company, LLC	Ownership	100.000	Elevance Health, Inc.	NO	
.0671	Elevance Health, Inc.		66-0999240		0001156039		MAPR Capital, LLC	PR	NIA	MAPR Global, LLC	Ownership	100.000	Elevance Health, Inc.	NO	
.0671	Elevance Health, Inc.		66-0999355		0001156039		MAPR Global, LLC	PR	NIA	APR, LLC	Ownership	100.000	Elevance Health, Inc.	NO	
.0671	Elevance Health, Inc.		66-0999498		0001156039		MAPR Holdings, LLC	PR	NIA	MAPR Capital, LLC	Ownership	100.000	Elevance Health, Inc.	NO	
.0671	Elevance Health, Inc.		04-3307857		0001156039		Massachusetts Behavioral Health Partnership	MA	NIA	Beacon Health Options, Inc.	Ownership	50.000	Elevance Health, Inc.	NO	
.0671	Elevance Health, Inc.		04-3307857		0001156039		Massachusetts Behavioral Health Partnership	MA	NIA	OPTIONS Health Care, Inc.	Ownership	50.000	Elevance Health, Inc.	NO	
.0671	Elevance Health, Inc.	95527	02-0494919		0001156039		Matthew Thornton Health Plan, Inc.	NH	IA	Anthem Health Plans of New Hampshire, Inc.	Ownership	100.000	Elevance Health, Inc.	NO	
.0671	Elevance Health, Inc.		66-0823267		0001156039		Medical Dental Network Management, LLC	PR	NIA	MMM Holdings, LLC	Ownership	100.000	Elevance Health, Inc.	NO	
.0671	Elevance Health, Inc.				0001156039		Meridian Resource Company, LLC	WI	NIA	Compcare Health Services Insurance Corporation	Ownership	100.000	Elevance Health, Inc.	NO	
.0671	Elevance Health, Inc.	12913	39-2013971		0001156039		Missouri Care, Incorporated	MO	IA	ATH Holding Company, LLC	Ownership	100.000	Elevance Health, Inc.	NO	
.0671	Elevance Health, Inc.		66-1002717		0001156039		MMM Contact, LLC	PR	IA	MMM Holdings, LLC	Ownership	100.000	Elevance Health, Inc.	NO	
.0671	Elevance Health, Inc.	11157	66-0588600		0001156039		MMM Healthcare, LLC	PR	IA	MMM Holdings, LLC	Ownership	100.000	Elevance Health, Inc.	NO	
.0671	Elevance Health, Inc.		66-0649625		0001156039		MMM Holdings, LLC	PR	NIA	MAPR Holdings, LLC	Ownership	100.000	Elevance Health, Inc.	NO	
.0671	Elevance Health, Inc.	12534	66-0653763		0001156039		MMM Multi Health, LLC	PR	IA	MMM Holdings, LLC	Ownership	100.000	Elevance Health, Inc.	NO	
.0671	Elevance Health, Inc.		66-1002779		0001156039		MMM Transportation, LLC	PR	NIA	MSO Holdings, LLC	Ownership	100.000	Elevance Health, Inc.	NO	
.0671	Elevance Health, Inc.		82-4684953		0001156039		Momentum Health Partners, LLC	NC	NIA	Anthem Partnership Holding Company, LLC	Ownership	50.000	Elevance Health, Inc.	NO	0107
.0671	Elevance Health, Inc.		66-0645750		0001156039		MSO Holdings, LLC	PR	NIA	MAPR Capital, LLC	Ownership	100.000	Elevance Health, Inc.	NO	
.0671	Elevance Health, Inc.		66-0719637		0001156039		MSO of Puerto Rico, LLC	PR	NIA	MSO Holdings, LLC	Ownership	100.000	Elevance Health, Inc.	NO	
.0671	Elevance Health, Inc.		84-1811105		0001156039		myNEXUS Holdings, Inc.	DE	NIA	ATH Holding Company, LLC	Ownership	100.000	Elevance Health, Inc.	NO	

STATEMENT AS OF SEPTEMBER 30, 2022 OF THE AMH Health, LLC

SCHEDULE Y

PART 1A - DETAIL OF INSURANCE HOLDING COMPANY SYSTEM

1	2	3	4	5	6	7	8	9	10	11	12	13	14	15	16
Group Code	Group Name	NAIC Company Code	ID Number	Federal RSSD	CIK	Name of Securities Exchange if Publicly Traded (U.S. or International)	Names of Parent, Subsidiaries Or Affiliates	Domiciliary Location	Relationship to Reporting Entity	Directly Controlled by (Name of Entity/Person)	Type of Control (Ownership, Board, Management, Attorney-in-Fact, Influence, Other)	If Control is Ownership Provide Percentage	Ultimate Controlling Entity(ies)/Person(s)	Is an SCA Filing Required? (Yes/No)	*
.0671	Elevance Health, Inc.		84-1801030		0001156039		myNEXUS Management, Inc.	DE	NIA	myNEXUS Holdings, Inc.	Ownership	100.000	Elevance Health, Inc.	NO	
.0671	Elevance Health, Inc.		81-4603181		0001156039		myNEXUS NPHO of TEXAS	TX	NIA	MyNexus, Inc.	Ownership	100.000	Elevance Health, Inc.	NO	
.0671	Elevance Health, Inc.		85-0541810		0001156039		myNEXUS NY IPA, LLC	NY	NIA	MyNexus, Inc.	Ownership	100.000	Elevance Health, Inc.	NO	
.0671	Elevance Health, Inc.		47-4671638		0001156039		MyNexus, Inc.	DE	NIA	myNEXUS Management, Inc.	Ownership	100.000	Elevance Health, Inc.	NO	
.0671	Elevance Health, Inc.		83-0892028		0001156039		Nash Holding Company, LLC	DE	NIA	ATH Holding Company, LLC	Ownership	100.000	Elevance Health, Inc.	NO	
.0671	Elevance Health, Inc.		35-1840597		0001156039		National Government Services, Inc.	IN	NIA	Federal Government Solutions, LLC	Ownership	100.000	Elevance Health, Inc.	NO	
.0671	Elevance Health, Inc.		04-2919509		0001156039		New England Research Institute, Inc.	MA	NIA	Health Core, Inc.	Ownership	100.000	Elevance Health, Inc.	NO	
.0671	Elevance Health, Inc.		81-5476630		0001156039		NGS Federal, LLC	IN	NIA	Federal Government Solutions, LLC	Ownership	100.000	Elevance Health, Inc.	NO	
.0671	Elevance Health, Inc.	12259	20-1336412		0001156039		Optimum Healthcare, Inc.	FL	IA	AMERIGROUP Corporation	Ownership	100.000	Elevance Health, Inc.	NO	
.0671	Elevance Health, Inc.		54-1826967		0001156039		OPTIONS Health Care, Inc.	DE	NIA	Beacon Health Options, Inc.	Ownership	100.000	Elevance Health, Inc.	NO	
.0671	Elevance Health, Inc.		95-4249368		0001156039		Park Square Holdings, Inc.	CA	NIA	WellPoint California Services, Inc.	Ownership	100.000	Elevance Health, Inc.	NO	
.0671	Elevance Health, Inc.		95-4386221		0001156039		Park Square I, Inc.	CA	NIA	WellPoint California Services, Inc.	Ownership	100.000	Elevance Health, Inc.	NO	
.0671	Elevance Health, Inc.		95-4249345		0001156039		Park Square II, Inc.	CA	NIA	WellPoint California Services, Inc.	Ownership	100.000	Elevance Health, Inc.	NO	
.0671	Elevance Health, Inc.		27-1991772		0001156039		Pasteur Medical Bird Road, LLC	FL	NIA	Highland Acquisition Holdings, LLC	Ownership	100.000	Elevance Health, Inc.	NO	
.0671	Elevance Health, Inc.		20-2749389		0001156039		Pasteur Medical Center, LLC	DE	NIA	Highland Acquisition Holdings, LLC	Ownership	100.000	Elevance Health, Inc.	NO	
.0671	Elevance Health, Inc.		27-1366915		0001156039		Pasteur Medical Cutler Bay, LLC	FL	NIA	Highland Acquisition Holdings, LLC	Ownership	100.000	Elevance Health, Inc.	NO	
.0671	Elevance Health, Inc.		20-0610128		0001156039		Pasteur Medical Group, LLC	FL	NIA	Highland Acquisition Holdings, LLC	Ownership	100.000	Elevance Health, Inc.	NO	

STATEMENT AS OF SEPTEMBER 30, 2022 OF THE AMH Health, LLC

SCHEDULE Y

PART 1A - DETAIL OF INSURANCE HOLDING COMPANY SYSTEM

1	2	3	4	5	6	7	8	9	10	11	12	13	14	15	16
Group Code	Group Name	NAIC Company Code	ID Number	Federal RSSD	CIK	Name of Securities Exchange if Publicly Traded (U.S. or International)	Names of Parent, Subsidiaries Or Affiliates	Domiciliary Location	Relationship to Reporting Entity	Directly Controlled by (Name of Entity/Person)	Type of Control (Ownership, Board, Management, Attorney-in-Fact, Influence, Other)	If Control is Ownership Provide Percentage	Ultimate Controlling Entity(ies)/Person(s)	Is an SCA Filing Required? (Yes/No)	*
														NO	
														NO	
														NO	
														NO	
														NO	
														NO	
														NO	
														NO	
														NO	
														NO	
														NO	
														NO	
														NO	
														NO	
														NO	
														NO	
														NO	
														NO	
														NO	

Asterisk	Explanation
0100	Insurer is deemed to be an insurance affiliate in column 10 and has an NAIC Company Code in column 3. However, it does not file an NAIC statutory statement because it is regulated by the New York State Department of Health.
0101	Insurer is deemed to be an insurance affiliate in column 10, but does not have an NAIC Company Code in column 3 because it is regulated by the California Department of Managed Health Care.
0102	CCHA, LLC is a joint venture 50% owned by Anthem Partnership Holding Company, LLC and 50% owned by Colorado Community Health Alliance, LLC, a non-affiliate.
0103	Owned 77% by Centros Medicos Unidos del Oeste, LLC, 13% by Asociacion de Medicos del Oeste, Inc. (a non-affiliate) and 10% by Doctores Asociados del Noroeste, Inc. (a non-affiliate).
0104	Community Care Health Plan of Louisiana, Inc. is a joint venture 75% owned by Anthem Partnership Holding Company, LLC and 25% owned by Louisiana Health Service & Indemnity Company d/b/a Blue Cross and Blue Shield of Louisiana (a non-affiliate).
0105	AMH Health, LLC is a joint venture 50% owned by Anthem Partnership Holding Company, LLC and 50% by MaineHealth, a non-affiliate.
0106	Legato Health Technologies Philippines, Inc. was incorporated under with the Republic of the Philippines, and is 100% owned by Legato Holdings I, Inc. an Indiana corporation.
0107	Momentum Health Partners, LLC is a joint venture 50% owned by Anthem Partnership Holding Company, LLC and 50% owned by Blue Cross and Blue Shield of North Carolina, a non-affiliate.
0108	GR Health Solutions, LLC is a joint venture 50% owned by Anthem Partnership Holding Company, LLC and 50% owned by Independence Blue Cross, LLC, a non-affiliate.
0109	Owned 50% by Centro Medicina Familiar del Norte, LLC and 50% by ACO del Norte, LLC, a non-affiliated entity.
0110	North Florida Behavioral Health Partners, Inc. is 50% owned by Beacon Health Options, Inc. and 50% owned by North Florida Behavioral Health Network, Inc. (non-affiliate)
0111	83.33% owned by unaffiliated investors
0112	Community Care Health Plan of Nebraska, Inc. is a joint venture 95% owned by Anthem Partnership Holding Company, LLC and 5% owned by Blue Cross and Blue Shield of Nebraska, a non-affiliate.
0113	TriADD NY, LLC dba MyCompass (NY) is owned 25% by Alliance Care Management, LLC and 75% by non-affiliates.
0114	Community Care Health Plan of Kansas, Inc. is a joint venture 90% owned by Anthem Partnership Holding Company, LLC, 5% owned by Blue Cross and Blue Shield of Kansas (a non-affiliate), and 5% owned by Blue Cross and Blue Shield of Kansas City, a non-affiliate.
0115	APC Passe, LLC is 49% owned by Anthem Partnership Holding Company, LLC and 51% owned by the Arkansas Provider Coalition, LLC, which is not affiliated with Anthem, Inc.

165

SUPPLEMENTAL EXHIBITS AND SCHEDULES INTERROGATORIES

The following supplemental reports are required to be filed as part of your statement filing. However, in the event that your company does not transact the type of business for which the special report must be filed, your response of NO to the specific interrogatory will be accepted in lieu of filing a "NONE" report and a bar code will be printed below. If the supplement is required of your company but is not being filed for whatever reason enter SEE EXPLANATION and provide an explanation following the interrogatory questions.

	Response
1. Will the Medicare Part D Coverage Supplement be filed with the state of domicile and the NAIC with this statement?	NO

AUGUST FILING

2. Will the regulator-only (non-public) Communication of Internal Control Related Matters Noted in Audit be filed with the state of domicile and electronically with the NAIC (as a regulator-only non-public document) by August 1? The response for 1st and 3rd quarters should be N/A. A NO response resulting with a bar code is only appropriate in the 2nd quarter.	N/A
--	-----

Explanation:

1.

Bar Code:

1. Medicare Part D Coverage Supplement [Document Identifier 365]



OVERFLOW PAGE FOR WRITE-INS

NONE

STATEMENT AS OF SEPTEMBER 30, 2022 OF THE AMH Health, LLC

SCHEDULE A - VERIFICATION

Real Estate

	1 Year to Date	2 Prior Year Ended December 31
1. Book/adjusted carrying value, December 31 of prior year		
2. Cost of acquired:		
2.1 Actual cost at time of acquisition		
2.2 Additional investment made after acquisition		
3. Current year change in encumbrances		
4. Total gain (loss) on disposals		
5. Deduct amounts received on disposals		
6. Total foreign exchange change in book/adjusted carrying value		
7. Deduct current year's other than temporary impairment recognized		
8. Deduct current year's depreciation		
9. Book/adjusted carrying value at the end of current period (Lines 1+2+3+4-5+6-7-8)		
10. Deduct total nonadmitted amounts		
11. Statement value at end of current period (Line 9 minus Line 10)		

NONE

SCHEDULE B - VERIFICATION

Mortgage Loans

	1 Year to Date	2 Prior Year Ended December 31
1. Book value/recorded investment excluding accrued interest, December 31 of prior year		
2. Cost of acquired:		
2.1 Actual cost at time of acquisition		
2.2 Additional investment made after acquisition		
3. Capitalized deferred interest and other		
4. Accrual of discount		
5. Unrealized valuation increase (decrease)		
6. Total gain (loss) on disposals		
7. Deduct amounts received on disposals		
8. Deduct amortization of premium and mortgage interest points and commitment fees		
9. Total foreign exchange change in book value/recorded investment excluding accrued interest		
10. Deduct current year's other than temporary impairment recognized		
11. Book value/recorded investment excluding accrued interest at end of current period (Lines 1+2+3+4+5+6-7-8+9-10)		
12. Total valuation allowance		
13. Subtotal (Line 11 plus Line 12)		
14. Deduct total nonadmitted amounts		
15. Statement value at end of current period (Line 13 minus Line 14)		

NONE

SCHEDULE BA - VERIFICATION

Other Long-Term Invested Assets

	1 Year to Date	2 Prior Year Ended December 31
1. Book/adjusted carrying value, December 31 of prior year		
2. Cost of acquired:		
2.1 Actual cost at time of acquisition		
2.2 Additional investment made after acquisition		
3. Capitalized deferred interest and other		
4. Accrual of discount		
5. Unrealized valuation increase (decrease)		
6. Total gain (loss) on disposals		
7. Deduct amounts received on disposals		
8. Deduct amortization of premium and depreciation		
9. Total foreign exchange change in book/adjusted carrying value		
10. Deduct current year's other than temporary impairment recognized		
11. Book/adjusted carrying value at end of current period (Lines 1+2+3+4+5+6-7-8+9-10)		
12. Deduct total nonadmitted amounts		
13. Statement value at end of current period (Line 11 minus Line 12)		

NONE

SCHEDULE D - VERIFICATION

Bonds and Stocks

	1 Year to Date	2 Prior Year Ended December 31
1. Book/adjusted carrying value of bonds and stocks, December 31 of prior year	30,952,380	2,357,740
2. Cost of bonds and stocks acquired	35,827,350	64,607,200
3. Accrual of discount	45,200	13,915
4. Unrealized valuation increase (decrease)	(1,656,922)	(901,900)
5. Total gain (loss) on disposals	(159,252)	178,863
6. Deduct consideration for bonds and stocks disposed of	9,046,574	35,126,183
7. Deduct amortization of premium	691,647	177,255
8. Total foreign exchange change in book/adjusted carrying value	0	0
9. Deduct current year's other than temporary impairment recognized	0	0
10. Total investment income recognized as a result of prepayment penalties and/or acceleration fees	0	0
11. Book/adjusted carrying value at end of current period (Lines 1+2+3+4+5-6-7+8-9+10)	55,270,535	30,952,380
12. Deduct total nonadmitted amounts	0	0
13. Statement value at end of current period (Line 11 minus Line 12)	55,270,535	30,952,380

STATEMENT AS OF SEPTEMBER 30, 2022 OF THE AMH Health, LLC

SCHEDULE D - PART 1B

Showing the Acquisitions, Dispositions and Non-Trading Activity
During the Current Quarter for all Bonds and Preferred Stock by NAIC Designation

NAIC Designation	1 Book/Adjusted Carrying Value Beginning of Current Quarter	2 Acquisitions During Current Quarter	3 Dispositions During Current Quarter	4 Non-Trading Activity During Current Quarter	5 Book/Adjusted Carrying Value End of First Quarter	6 Book/Adjusted Carrying Value End of Second Quarter	7 Book/Adjusted Carrying Value End of Third Quarter	8 Book/Adjusted Carrying Value December 31 Prior Year
BONDS								
1. NAIC 1 (a)	25,217,815	24,179,119	7,715,236	(231,385)	26,820,081	25,217,815	41,450,313	27,016,024
2. NAIC 2 (a)	0	9,777,870	130,448	(106,634)	0	0	9,540,788	
3. NAIC 3 (a)	0	0	0	0	0	0	0	
4. NAIC 4 (a)	0	0	0	0	0	0	0	
5. NAIC 5 (a)	0	0	0	0	0	0	0	
6. NAIC 6 (a)	0	0	0	0	0	0	0	
7. Total Bonds	25,217,815	33,956,989	7,845,684	(338,019)	26,820,081	25,217,815	50,991,101	27,016,024
PREFERRED STOCK								
8. NAIC 1	0	0	0	0	0	0	0	0
9. NAIC 2	0	0	0	0	0	0	0	0
10. NAIC 3	0	0	0	0	0	0	0	0
11. NAIC 4	0	0	0	0	0	0	0	0
12. NAIC 5	0	0	0	0	0	0	0	0
13. NAIC 6	0	0	0	0	0	0	0	0
14. Total Preferred Stock	0	0	0	0	0	0	0	0
15. Total Bonds and Preferred Stock	25,217,815	33,956,989	7,845,684	(338,019)	26,820,081	25,217,815	50,991,101	27,016,024

(a) Book/Adjusted Carrying Value column for the end of the current reporting period includes the following amount of short-term and cash equivalent bonds by NAIC designation:

NAIC 1 \$0 ; NAIC 2 \$0 ; NAIC 3 \$0 NAIC 4 \$0 ; NAIC 5 \$0 ; NAIC 6 \$0

S102

SCHEDULE DA - PART 1

Short-Term Investments

	1	2	3	4	5
	Book/Adjusted Carrying Value	Premium	Actual Cost	Interest Collected Year-to-Date	Paid for Accrued Interest Year-to-Date
7709999999 Totals		XX			

NONE

SCHEDULE DA - VERIFICATION

Short-Term Investments

	1	2
	Year To Date	Prior Year Ended December 31
1. Book/adjusted carrying value, December 31 of prior year	0	
2. Cost of short-term investments acquired	129,639	
3. Accrual of discount	65	
4. Unrealized valuation increase (decrease)	0	
5. Total gain (loss) on disposals	(359)	
6. Deduct consideration received on disposals	129,345	
7. Deduct amortization of premium	0	
8. Total foreign exchange change in book/adjusted carrying value	0	
9. Deduct current year's other than temporary impairment recognized	0	
10. Book/adjusted carrying value at end of current period (Lines 1+2+3+4+5-6-7+8-9)	0	0
11. Deduct total nonadmitted amounts	0	
12. Statement value at end of current period (Line 10 minus Line 11)	0	0

Schedule DB - Part A - Verification - Options, Caps, Floors, Collars, Swaps and Forwards

NONE

Schedule DB - Part B - Verification - Futures Contracts

NONE

Schedule DB - Part C - Section 1 - Replication (Synthetic Asset) Transactions (RSATs) Open

NONE

Schedule DB-Part C-Section 2-Reconciliation of Replication (Synthetic Asset) Transactions Open

NONE

Schedule DB - Verification - Book/Adjusted Carrying Value, Fair Value and Potential Exposure of Derivatives

NONE

Schedule E - Part 2 - Verification - Cash Equivalents

NONE

Schedule A - Part 2 - Real Estate Acquired and Additions Made

NONE

Schedule A - Part 3 - Real Estate Disposed

NONE

Schedule B - Part 2 - Mortgage Loans Acquired and Additions Made

NONE

Schedule B - Part 3 - Mortgage Loans Disposed, Transferred or Repaid

NONE

Schedule BA - Part 2 - Other Long-Term Invested Assets Acquired and Additions Made

NONE

Schedule BA - Part 3 - Other Long-Term Invested Assets Disposed, Transferred or Repaid

NONE

STATEMENT AS OF SEPTEMBER 30, 2022 OF THE AMH Health, LLC

SCHEDULE D - PART 3

Show All Long-Term Bonds and Stock Acquired During the Current Quarter

1	2	3	4	5	6	7	8	9	10
CUSIP Identification	Description	Foreign	Date Acquired	Name of Vendor	Number of Shares of Stock	Actual Cost	Par Value	Paid for Accrued Interest and Dividends	NAIC Designation, NAIC Designation Modifier and SVO Administrative Symbol
912810-TF-5	US TREASURY N B 2.375% 02/15/42		09/01/2022	BNP Paribas Securities		151,136	185,000	215	1.A
912828-Z7-8	US TREASURY N B 1.500% 01/31/27		09/01/2022	NOMURA SEC INTERNATIONAL INC		4,215,415	4,581,000	6,162	1.A
91282C-BE-0	US TREASURY N B 0.125% 01/15/24		09/01/2022	NOMURA SEC INTERNATIONAL INC		6,122,552	6,410,000	1,067	1.A
91282C-DY-4	WI TREASURY SEC 1.875% 02/15/32		09/01/2022	HSBC		2,100,287	2,366,000	2,170	1.A FE
91282C-FF-3	WI TREASURY SEC 2.750% 08/15/32		09/29/2022	Bank of America		95,339	104,000	381	1.A
0109999999 Subtotal - Bonds - U.S. Governments						12,684,729	13,646,000	9,995	XXX
392274-Z4-1	GTR ORLANDO FL AVIATION AUTH A SERIES A 5.000% 10/01/30		09/28/2022	BNP Paribas Securities		246,593	235,000	5,842	1.D FE
0909999999 Subtotal - Bonds - U.S. Special Revenues						246,593	235,000	5,842	XXX
00178X-AA-1	AMSR TRUST SERIES 2019-SFR1 CLASS A 144A 2.774% 01/19/39		09/02/2022	Baring Securities Inc		140,725	150,000	89	1.A FE
00206R-KH-4	AT&T INC 2.250% 02/01/32		09/01/2022	BNP Paribas Securities		195,437	245,000	536	2.B FE
008513-AA-1	AGREE LP 2.900% 10/01/30		09/13/2022	Citadel Securities LLC		83,273	100,000	1,321	2.B FE
00914A-AM-4	AIR LEASE CORP 1.875% 08/15/26		09/01/2022	BNP Paribas Securities		100,208	115,000	126	2.B FE
015271-AT-6	ALEXANDRIA REAL ESTATE E 2.750% 12/15/29		09/02/2022	MarketAxess Corporation		87,238	100,000	626	2.A FE
01627A-AA-6	ALIGNED DATA CENTERS ISSUER LL SERIES 2021-1A CLASS A2 144A 1.937% 08/15/46		09/01/2022	Deutsche Bank		131,813	150,000	169	1.G FE
01748T-AC-5	ALLEGION US HOLDING CO 5.411% 07/01/32		09/01/2022	BNP Paribas Securities		112,488	115,000	1,279	2.B FE
02343J-AA-8	AMCOR FLEXIBLES NORTH AM 4.000% 05/17/25		09/01/2022	BNP Paribas Securities		93,197	95,000	1,151	2.B FE
023608-AK-8	AMEREN CORP 1.750% 03/15/28		09/01/2022	BNP Paribas Securities		158,036	185,000	1,538	2.B FE
02666T-AA-5	AMERICAN HOMES 4 RENT 4.250% 02/15/28		09/01/2022	BNP Paribas Securities		76,868	80,000	198	2.C FE
032095-AH-4	AMPHENOL CORP 4.350% 06/01/29		09/01/2022	BNP Paribas Securities		92,948	95,000	1,091	1.G FE
035240-AQ-3	ANHEUSER BUSCH INBEV WOR 4.750% 01/23/29		09/01/2022	BNP Paribas Securities		76,096	75,000	426	2.B FE
03765H-AA-9	APOLLO MANAGEMENT HOLDIN SERIES 144A 4.000% 05/30/24		09/01/2022	BNP Paribas Securities		113,222	115,000	1,227	1.G FE
04505A-AA-7	ASSTEAD CAPITAL INC SERIES 144A 5.500% 08/11/32		09/01/2022	BNP Paribas Securities		195,098	200,000	764	2.C FE
05329R-AA-1	AUTONATION INC 3.850% 03/01/32		09/01/2022	BNP Paribas Securities		85,177	100,000	53	2.C FE
05369A-AH-4	AVIATION CAPITAL GROUP SERIES 144A 5.500% 12/15/24		09/01/2022	BNP Paribas Securities		88,263	90,000	1,114	2.B FE
05523U-AP-5	BAE SYSTEMS HOLDINGS INC SERIES 144A 3.850% 12/15/25		09/01/2022	BNP Paribas Securities		116,156	120,000	1,040	2.B FE
05565E-CA-1	BMI US CAPITAL LLC SERIES 144A 3.450% 04/01/27		09/01/2022	BNP Paribas Securities		76,893	80,000	1,188	1.F FE
05684B-AB-3	BAIN CAPITAL SPECIALTY F 2.950% 03/10/26		09/01/2022	BNP Paribas Securities		75,505	85,000	1,226	2.C FE
06051G-HD-4	BANK OF AMERICA CORP SERIES W1 3.419% 12/20/28		09/01/2022	BNP Paribas Securities		249,045	270,000	1,949	1.F FE
06759L-AA-1	BARINGS BDC INC SERIES 144A 3.300% 11/23/26		09/01/2022	BNP Paribas Securities		73,082	85,000	803	2.C
08162M-AV-0	BENCHMARK MORTGAGE TRUST SERIES 2020-B17 CLASS A2 2.211% 03/15/53		09/09/2022	BNP Paribas Securities		130,318	139,000	102	1.A
08162R-AB-3	BENCHMARK MORTGAGE TRUST SERIES 2021-B23 CLASS A2 1.620% 02/15/54		09/09/2022	BNP Paribas Securities		135,814	150,000	81	1.A
08576P-AH-4	BERRY GLOBAL INC 1.570% 01/15/26		09/01/2022	BNP Paribas Securities		93,122	105,000	234	2.C FE
09256B-AJ-6	BLACKSTONE HOLDINGS FINA SERIES 144A 3.150% 10/02/27		09/01/2022	BNP Paribas Securities		74,391	80,000	1,078	1.E FE
09259E-AB-4	BLACKROCK TCP CAP CORP 2.850% 02/09/26		09/01/2022	BNP Paribas Securities		76,660	85,000	182	2.C FE
09261H-AR-8	BLACKSTONE PRIVATE CRE 4.000% 01/15/29		09/01/2022	BNP Paribas Securities		72,995	85,000	482	2.C FE
09581J-AA-4	BLUE OIL FINANCE LLC SERIES 144A 3.125% 06/10/31		09/01/2022	BNP Paribas Securities		82,900	110,000	821	2.B FE
097023-CY-9	BOEING CO 5.150% 05/01/30		09/01/2022	BNP Paribas Securities		107,500	110,000	1,967	2.C FE
10112R-BB-9	BOSTON PROPERTIES LP 3.400% 06/21/29		09/01/2022	BNP Paribas Securities		159,975	180,000	1,275	2.A FE
11120V-AK-9	BRIXMOR OPERATING PART 2.250% 04/01/28		09/01/2022	BNP Paribas Securities		210,715	250,000	2,422	2.C FE
11135F-AS-0	BROADCOM INC SERIES W1 4.300% 11/15/32		09/01/2022	BNP Paribas Securities		80,580	90,000	1,193	2.C FE
115236-AE-1	BROWN & BROWN INC 4.200% 03/17/32		09/01/2022	BNP Paribas Securities		67,811	75,000	1,479	2.C FE
12591U-AF-0	COMM MORTGAGE TRUST SERIES 2014-LBS2 CLASS A5 3.961% 03/10/47		09/21/2022	Wells Fargo		173,284	176,000	426	1.A
12592B-AJ-3	CNH INDUSTRIAL CAP LLC 4.200% 01/15/24		09/01/2022	BNP Paribas Securities		114,652	115,000	684	2.B FE
12592M-BK-5	COMM MORTGAGE TRUST SERIES 2014-LC17 CLASS A5 3.917% 10/10/47		09/02/2022	Wells Fargo		148,482	150,000	98	1.A FE
12593G-AF-9	COMM MORTGAGE TRUST SERIES 2015-PC1 CLASS A5 3.902% 07/10/50		09/09/2022	NOMURA SEC INTERNATIONAL INC		147,252	150,000	195	1.A
12593P-AW-2	COMM MORTGAGE TRUST SERIES 2015-CR25 CLASS A4 3.759% 08/10/48		09/12/2022	Baring Securities Inc		88,924	91,000	124	1.A
126650-BQ-2	CVS/CAREMARK CORP 6.943% 01/10/30		09/08/2022	TD Securities		96,811	91,595	35	2.B FE
126650-BV-1	CVS/CAREMARK CORP SERIES 144A 5.773% 01/10/33		09/01/2022	BNP Paribas Securities		127,237	125,414	523	2.B
14040H-CS-2	CAPITAL ONE FINANCIAL CO 4.927% 05/10/28		09/01/2022	BNP Paribas Securities		196,978	200,000	3,203	2.A FE
15089Q-AR-5	CELANESE US HOLDINGS LLC 5.900% 07/05/24		09/01/2022	BNP Paribas Securities		95,629	95,000	810	2.C FE
161175-BK-9	CHARTER COMM OPT LLC SERIES W1 4.200% 03/15/28		09/01/2022	BNP Paribas Securities		187,580	200,000	3,990	2.C FE
16412X-AC-9	CHENIERE CORP CHRISTI HD 5.875% 03/31/25		09/01/2022	BNP Paribas Securities		96,810	95,000	1,023	2.C FE
17290X-AS-9	CITIGROUP COMMERCIAL MORTGAG SERIES 2016-GC37 CLASS A3 3.050% 04/10/49		09/14/2022	Brean Murray & Co		85,049	89,276	113	1.A FE
17321J-AD-6	CITIGROUP COMMERCIAL MORTGAG SERIES 2013-GC15 CLASS A4 4.371% 09/10/46		09/12/2022	Barclays		124,521	125,000	197	1.A
17322M-AW-6	CITIGROUP COMMERCIAL MORTGAGE SERIES 2014-GC21 CLASS A5 3.855% 05/10/47		09/13/2022	Morgan Stanley		136,953	139,000	208	1.A
17327C-AQ-6	CITIGROUP INC 3.057% 01/25/33		09/01/2022	BNP Paribas Securities		170,995	205,000	714	1.G FE

E04

STATEMENT AS OF SEPTEMBER 30, 2022 OF THE AMH Health, LLC

SCHEDULE D - PART 3

Show All Long-Term Bonds and Stock Acquired During the Current Quarter

1	2	3	4	5	6	7	8	9	10
CUSIP Identification	Description	Foreign	Date Acquired	Name of Vendor	Number of Shares of Stock	Actual Cost	Par Value	Paid for Accrued Interest and Dividends	NAIC Designation, NAIC Designation Modifier and SVO Administrative Symbol
20268J-AA-1	COMMONSPIRIT HEALTH 2.760% 10/01/24		09/01/2022	BNP Paribas Securities		116,519	120,000	1,426	1.G FE
22003B-AP-1	CORPORATE OFFICE PROP LP 2.900% 12/01/33		09/01/2022	BNP Paribas Securities		73,731	100,000	765	2.C FE
23291Y-AC-9	DLAA LLC SERIES 2021-1A CLASS A3 144A 0.670% 04/17/26		09/21/2022	BNP Paribas Securities		142,052	151,000	17	1.A FE
233046-AO-4	DB MASTER FINANCE LLC SERIES 2021-1A CLASS A211 144A 2.493% 11/20/51		09/08/2022	BNP Paribas Securities		169,431	198,500	302	2.B FE
233851-DX-9	DAIMLER FINANCE NA LLC SERIES 144A 2.700% 06/14/24		09/01/2022	BNP Paribas Securities		146,121	150,000	923	1.G FE
233853-AF-7	DAIMLER TRUCKS FINAN NA SERIES 144A 2.000% 12/14/26		09/01/2022	BNP Paribas Securities		133,335	150,000	683	2.A FE
247361-ZV-3	DELTA AIR LINES 2020 AA SERIES AA 2.000% 12/10/29		09/09/2022	Various		136,308	155,833	805	1.E FE
254687-FQ-4	WALT DISNEY COMPANY THE 3.800% 03/22/30		09/01/2022	BNP Paribas Securities		76,722	80,000	1,385	1.G FE
25755T-AN-0	DOMINOS PIZZA MASTER ISSUER SERIES 2021-1A CLASS A21 144A 2.662% 04/25/51		09/27/2022	BNP Paribas Securities		122,261	148,125	701	2.A FE
257812-AD-9	DONLEN FLEET LEASE FUNDING SERIES 2021-2 CLASS A2 144A 0.560% 12/11/34		09/01/2022	Barclays		91,821	95,194	39	1.A FE
26441C-BL-8	DUKE ENERGY CORP 2.550% 06/15/31		09/01/2022	BNP Paribas Securities		74,505	90,000	516	2.B FE
29278N-AF-0	ENERGY TRANSFER PARTNERS SERIES 10Y 4.950% 06/15/28		09/01/2022	BNP Paribas Securities		122,510	125,000	1,392	2.C FE
29449H-AJ-6	EQUITABLE FINANCIAL LIFE SERIES 144A 0.800% 08/12/24		09/01/2022	BNP Paribas Securities		195,581	210,000	112	1.E FE
30321L-ZB-7	F&G GLOBAL FUNDING SERIES 144A 0.900% 09/20/24		09/01/2022	BNP Paribas Securities		87,344	95,000	394	1.G FE
31620M-BW-5	FIDELITY NATL INFO SERV 4.700% 07/15/27		09/01/2022	BNP Paribas Securities		84,336	85,000	588	2.B FE
33768J-AA-9	FIRSTKEY HOMES 2021 SFR3 TR SERIES 2021-SFR3 CLASS A 144A 2.135% 12/17/38		09/02/2022	Morgan Stanley		135,401	149,389	53	1.A FE
36197X-AK-0	GS MORTGAGE SECURITIES TRUST SERIES 2013-GC12 CLASS A4 3.135% 06/10/46		09/12/2022	Wells Fargo		103,224	104,000	118	1.A
36198E-AE-5	GS MORTGAGE SECURITIES TRUST SERIES 2-13-GC13 CLASS A5 4.038% 07/10/46		09/19/2022	Baring Securities Inc		172,763	174,000	404	1.A FE
36250G-AN-5	GS MORTGAGE SECURITIES TRUST SERIES 2015-GC30 CLASS A3 3.119% 05/10/50		09/19/2022	Morgan Stanley		154,909	161,075	279	1.A
36269C-AA-1	GS MORTGAGE SECURITIES TRUST SERIES 2022-SHP CLASS A 144A 3.576% 08/15/36		09/14/2022	RW BAIRD		128,456	130,000	11	1.A FE
37045X-CV-6	GENERAL MOTORS FINL CO 2.900% 02/26/25		09/01/2022	BNP Paribas Securities		162,396	170,000	137	2.C FE
372460-AB-1	GENUINE PARTS CO 1.750% 02/01/25		09/01/2022	BNP Paribas Securities		75,227	80,000	136	2.B FE
378272-AX-6	GLENCORE FUNDING LLC SERIES 144A 1.625% 09/01/25		09/01/2022	BNP Paribas Securities		91,306	100,000	23	2.A FE
37940X-AP-7	GLOBAL PAYMENTS INC 4.950% 08/15/27		09/01/2022	BNP Paribas Securities		78,963	80,000	154	2.C FE
37959G-AB-3	GLOBAL ATLANTIC FIN CO SERIES 144A 3.125% 06/15/31		09/01/2022	BNP Paribas Securities		73,628	95,000	668	2.B FE
38141G-ZR-8	GOLDMAN SACHS GROUP INC 3.615% 03/15/28		09/01/2022	BNP Paribas Securities		225,924	240,000	4,121	1.F FE
38173M-AB-8	GOLUB CAPITAL BDC 2.500% 08/24/26		09/01/2022	BNP Paribas Securities		73,689	85,000	71	2.C FE
413875-AW-5	HARRIS CORPORATION 4.400% 06/15/28		09/01/2022	BNP Paribas Securities		107,753	110,000	1,089	2.B FE
42250P-AD-5	HEALTHPEAK PROPERTIES 2.125% 12/01/28		09/02/2022	BNP Paribas Securities		86,721	100,000	567	2.A FE
427096-AJ-1	HERCULES CAPITAL INC 3.375% 01/20/27		09/01/2022	BNP Paribas Securities		72,633	85,000	367	2.C FE
43730N-AA-4	HOME PARTNERS OF AMERICA TRUST SERIES 2022-1 CLASS A 144A 3.930% 04/17/39		09/02/2022	Deutsche Bank		121,625	125,629	82	1.A FE
45167R-AG-9	IDEX CORP 3.000% 05/01/30		09/01/2022	BNP Paribas Securities		74,143	85,000	885	2.B FE
46188B-AB-8	INVITATION HOMES OP 2.300% 11/15/28		09/01/2022	BNP Paribas Securities		87,300	105,000	745	2.C FE
46642E-AY-2	JPMBB COMMERCIAL MORTGAGE S SERIES 2014-C21 CLASS A5 3.775% 08/15/47		09/19/2022	Baring Securities Inc		147,886	151,000	317	1.A FE
46645J-AD-4	JPMBB COMMERCIAL MORTGAGE SECU SERIES 2015-C33 CLASS A4 3.770% 12/15/48		09/12/2022	Baring Securities Inc		149,247	153,000	208	1.A
46647P-BJ-4	JPMORGAN CHASE & CO 4.493% 03/24/31		09/01/2022	BNP Paribas Securities		221,196	230,000	4,650	1.E FE
46647P-DK-9	JPMORGAN CHASE & CO 5.717% 09/14/33		09/07/2022	J P Morgan		151,000	151,000	0	1.G FE
48255G-AA-3	KKR GROUP FINAN CO XII SERIES 144A 4.850% 05/17/32		09/01/2022	BNP Paribas Securities		111,030	115,000	1,689	1.F FE
49456B-AB-7	KINDER MORGAN INC SERIES 144A 5.625% 11/15/23		09/01/2022	BNP Paribas Securities		136,288	135,000	2,341	2.B FE
534187-BK-4	LINCOLN NATIONAL CORP 3.400% 01/15/31		09/01/2022	BNP Paribas Securities		88,644	100,000	482	2.A FE
548661-EL-7	LOWE S COS INC 5.000% 04/15/33		09/06/2022	Goldman Sachs & Co		129,672	130,000	0	2.A FE
55317J-AC-4	MIAF EQUIPMENT FINANCE LLC SERIES 2021-A CLASS A3 144A 0.560% 06/13/28		09/08/2022	BNP Paribas Securities		141,064	150,000	68	1.A FE
55903V-AL-7	MAGALLANES INC SERIES 144A 4.279% 03/15/32		09/01/2022	BNP Paribas Securities		99,247	115,000	2,337	2.C FE
58989V-2D-5	MET TOWER GLOBAL FUNDING SERIES 144A 1.250% 09/14/26		09/01/2022	BNP Paribas Securities		132,342	150,000	896	1.D FE
595017-BC-7	MICROCHIP TECHNOLOGY INC 0.983% 09/01/24		09/01/2022	BNP Paribas Securities		125,978	135,000	18	2.B FE
61690G-AF-8	MORGAN STANLEY BAML TRUST SERIES 2014-C14 CLASS A5 4.064% 02/15/47		09/09/2022	NOMURA SEC INTERNATIONAL INC		109,160	109,915	149	1.A
61690V-AZ-1	MORGAN STANLEY BAML TRUST SERIES 2015-C26 CLASS A5 3.531% 10/15/48		09/12/2022	Various		140,971	145,000	133	1.A
61772B-AB-9	MORGAN STANLEY 1.593% 05/04/27		09/01/2022	BNP Paribas Securities		98,001	110,000	594	1.F FE
637417-AJ-5	NATIONAL RETAIL PROP INC 3.600% 12/15/26		09/02/2022	BNP Paribas Securities		86,311	90,000	738	2.A FE
63942L-AA-0	NAVIENT STUDENT LOAN TRUST SERIES 2021-BA CLASS A 144A 0.940% 07/15/69		09/21/2022	BNP Paribas Securities		128,141	147,766	31	1.A FE
67181D-AA-9	OAK STREET INVESTMENT GRADE SERIES 2020-1A CLASS A1 144A 1.850% 10/20/50		09/01/2022	Wells Fargo		96,948	96,948	80	1.A FE
67401P-AB-4	OAKTREE SPECIALTY LEND 3.500% 02/25/25		09/01/2022	BNP Paribas Securities		77,089	80,000	86	2.C FE
68389X-CD-5	ORACLE CORP 2.300% 03/25/28		09/01/2022	BNP Paribas Securities		86,663	100,000	1,029	2.B FE
691205-AE-8	OUIL ROCK TECHNOLOGY FINA SERIES 144A 3.750% 06/17/26		09/01/2022	BNP Paribas Securities		75,926	85,000	699	2.C FE
69120V-AF-8	OUIL ROCK CORE INCOME COR SERIES W1 4.700% 02/08/27		09/01/2022	BNP Paribas Securities		72,834	80,000	292	2.C FE
693342-AA-5	PG&E WILDFIRE RECOVERY SERIES A-1 3.594% 06/01/30		09/12/2022	Barclays		58,289	60,000	743	1.A FE
69335P-EF-8	PFS FINANCING CORP SERIES 2022-A CLASS A 144A 2.470% 02/16/27		09/08/2022	Baring Securities Inc		124,043	130,000	241	1.A FE

E04.1

STATEMENT AS OF SEPTEMBER 30, 2022 OF THE AMH Health, LLC

SCHEDULE D - PART 3

Show All Long-Term Bonds and Stock Acquired During the Current Quarter

1	2	3	4	5	6	7	8	9	10
CUSIP Identification	Description	Foreign	Date Acquired	Name of Vendor	Number of Shares of Stock	Actual Cost	Par Value	Paid for Accrued Interest and Dividends	NAIC Designation, NAIC Designation Modifier and SVO Administrative Symbol
701094-AR-5	PARKER HANFIFIN CORP 4.250% 09/15/27		09/01/2022	BNP Paribas Securities		83,741	85,000	813	2.A FE
709599-BL-7	PENSKE TRUCK LEASING PTL SERIES 144A 1.200% 11/15/25		09/01/2022	BNP Paribas Securities		123,934	140,000	518	2.B FE
74256L-BJ-7	PRINCIPAL LFE GLB FND II SERIES 144A 2.250% 11/21/24		09/01/2022	BNP Paribas Securities		233,387	245,000	1,608	1.E FE
74331U-AA-6	PROGRESS RESIDENTIAL TRUST SERIES 2022-SFR3 CLASS A 144A 3.200% 04/17/39		09/19/2022	Baring Securities Inc		135,843	147,000	261	1.A FE
74333C-AA-4	PROGRESS RESIDENTIAL TRUST SERIES 2022-SFR7 CLASS A 144A 4.750% 10/27/27		09/14/2022	Goldman Sachs & Co		98,903	100,000	0	1.A FE
74368C-BL-7	PROTECTIVE LIFE GLOBAL SERIES 144A 3.218% 03/28/25		09/01/2022	BNP Paribas Securities		144,440	150,000	2,092	1.D FE
74739D-AA-2	QORVO INC SERIES 144A 1.750% 12/15/24		09/01/2022	BNP Paribas Securities		74,798	80,000	315	2.C FE
78355H-KU-2	RYDER SYSTEM INC SERIES MTN 4.300% 06/15/27		09/01/2022	BNP Paribas Securities		136,441	140,000	1,823	2.B FE
78409V-BB-9	S&P GLOBAL INC SERIES 144A 2.700% 03/01/29		09/01/2022	BNP Paribas Securities		104,314	115,000	43	1.G FE
78432M-AA-3	SBL HOLDINGS LLC KS SERIES 144A 5.125% 11/13/26		09/01/2022	BNP Paribas Securities		85,544	90,000	1,448	2.C FE
81211K-AZ-3	SEALED AIR CORP SERIES 144A 1.573% 10/15/26		09/01/2022	BNP Paribas Securities		65,345	75,000	462	2.C FE
817743-AE-7	SERVPRO MASTER ISSUER LLC SERIES 2021-1A CLASS A2 144A 2.394% 04/25/51		09/13/2022	BNP Paribas Securities		124,076	153,063	509	2.C FE
827048-AX-7	SILGAN HOLDINGS INC SERIES 144A 1.400% 04/01/26		09/01/2022	BNP Paribas Securities		65,924	75,000	452	2.C FE
828807-DL-8	SIMON PROPERTY GROUP INC 1.750% 02/01/28		09/01/2022	BNP Paribas Securities		116,061	135,000	230	1.G FE
83405N-AA-4	SOCIAL PROFESSIONAL LOAN PROG SERIES 2021-B CLASS AFX 144A 1.140% 02/15/47		09/02/2022	Deutsche Bank		105,303	120,843	84	1.A FE
83406T-AB-8	SOCIAL PROFESSIONAL LOAN PROGR SERIES 2020-A CLASS A2FX 144A 2.540% 05/15/46		09/21/2022	BNP Paribas Securities		123,725	131,858	74	1.A FE
85236K-AD-4	STACK INFRASTRUCTURE ISSUER LL SERIES 2020-1A CLASS A2 144A 1.893% 08/25/45		09/21/2022	Deutsche Bank		179,258	200,000	294	1.G FE
857477-BU-6	STATE STREET CORP 4.421% 05/13/33		09/01/2022	BNP Paribas Securities		73,417	75,000	1,041	1.E FE
86212V-AE-4	STORE MASTER FUNDING LLC SERIES 2018-1A CLASS A2 144A 4.290% 10/20/48		09/01/2022	CS First Boston		90,938	94,034	179	1.A FE
87264A-CA-1	T MOBILE USA INC SERIES W1 2.050% 02/15/28		09/01/2022	BNP Paribas Securities		90,723	105,000	126	2.C FE
874054-AG-4	TAKE TWO INTERACTIVE SOF 3.700% 04/14/27		09/01/2022	BNP Paribas Securities		76,750	80,000	1,168	2.B FE
883203-CB-5	TEXTRON INC 3.000% 06/01/30		09/01/2022	BNP Paribas Securities		86,459	100,000	792	2.B FE
89614Y-AA-4	TRICON RESIDENTIAL SERIES 2021-SFR1 CLASS A 144A 1.943% 07/17/38		09/22/2022	BNP Paribas Securities		88,181	99,806	135	1.A FE
913903-AX-8	UNIVERSAL HEALTH SVCS SERIES 144A 1.650% 09/01/26		09/01/2022	BNP Paribas Securities		73,351	85,000	39	2.C FE
92212K-AA-4	VANTAGE DATA CENTERS LLC SERIES 2019-1A CLASS A2 144A 3.188% 07/15/44		09/07/2022	Deutsche Bank		57,113	59,170	126	1.G FE
92212K-AD-8	VANTAGE DATA CENTERS LLC SERIES 2021-1A CLASS A2 144A 2.165% 10/15/46		09/08/2022	Mitsubishi Securities		61,947	70,000	114	1.G FE
92343E-AM-4	VERISIGN INC 2.700% 06/15/31		09/01/2022	BNP Paribas Securities		73,494	90,000	547	2.C FE
92343V-GH-1	VERIZON COMMUNICATIONS 2.100% 03/22/28		09/01/2022	BNP Paribas Securities		74,749	85,000	813	2.A FE
925650-AB-9	VICI PROPERTIES LP 4.750% 02/15/28		09/01/2022	BNP Paribas Securities		81,467	85,000	236	2.C FE
928668-BS-0	VOLKSWAGEN GROUP AMERICA SERIES 144A 4.350% 06/08/27		09/01/2022	BNP Paribas Securities		194,116	200,000	2,127	2.A FE
92939V-AQ-8	WF RBS COMMERCIAL MORTGAGE SERIES 2014-C19 CLASS A5 4.101% 03/15/47		09/12/2022	Baring Securities Inc		94,980	96,000	142	1.A
94989K-AV-5	WELLS FARGO COMMERCIAL MORTGAG SERIES 2015-C29 CLASS A4 3.637% 06/15/48		09/13/2022	Morgan Stanley		116,208	120,000	170	1.A FE
94989W-AS-6	WELLS FARGO COMMERCIAL MORTGAG SERIES 2015-C31 CLASS A4 3.695% 11/15/48		09/09/2022	NOMURA SEC INTERNATIONAL INC		145,781	150,000	185	1.A
94989Y-AZ-6	WELLS FARGO COMMERCIAL MORTGAG SERIES 2016-C32 CLASS A4 3.560% 01/15/59		09/19/2022	Wells Fargo		160,899	168,000	332	1.A
95000A-AU-1	WELLS FARGO COMMERCIAL SERIES 2015-P2 CLASS A4 3.809% 12/15/48		09/12/2022	Baring Securities Inc		174,847	179,000	246	1.A
95000U-2L-6	WELLS FARGO & COMPANY SERIES MTN 4.478% 04/04/31		09/01/2022	BNP Paribas Securities		124,037	130,000	2,458	2.A FE
958102-AM-7	WESTERN DIGITAL CORP 4.750% 02/15/26		09/02/2022	MarketAxess Corporation		76,910	80,000	232	2.C FE
970648-AF-8	WILLIS GROUP N AMERICA 3.600% 05/15/24		09/01/2022	BNP Paribas Securities		118,376	120,000	1,332	2.B FE
06368F-AC-3	BANK OF MONTREAL SERIES MTN 1.250% 09/15/26	A.	09/01/2022	BNP Paribas Securities		124,261	140,000	831	1.F FE
13645R-AY-0	CANADIAN PACIFIC 4.000% 06/01/28	A.	09/01/2022	BNP Paribas Securities		73,341	75,000	792	2.B FE
28250N-AY-1	ENBRIDGE INC 2.500% 01/15/25	A.	09/01/2022	BNP Paribas Securities		90,902	95,000	336	2.A FE
78016E-ZD-2	ROYAL BANK OF CANADA 3.625% 05/04/27	A.	09/01/2022	BNP Paribas Securities		125,003	130,000	1,859	1.E FE
89115A-2J-0	TORONTO DOMINION BANK SERIES MTN 4.285% 09/13/24	A.	09/08/2022	TD Securities		125,000	125,000	0	1.E FE
00131L-AH-8	AIA GROUP LTD SERIES 144A 3.600% 04/09/29	D.	09/02/2022	Morgan Stanley		190,372	200,000	2,960	1.E FE
00774M-AC-9	AERCAP IRELAND CAP GLOBA 3.500% 01/15/25	D.	09/02/2022	BNP Paribas Securities		143,759	150,000	758	2.C FE
00973R-AE-3	AKER BP ASA SERIES 144A 3.000% 01/15/25	D.	09/01/2022	BNP Paribas Securities		143,253	150,000	638	2.B FE
06738E-BZ-7	BARCLAYS PLC 5.304% 08/09/26	D.	09/02/2022	Morgan Stanley		198,568	200,000	825	2.B FE
314890-AA-2	FERGUSON FINANCE PLC SERIES 144A 4.500% 10/24/28	D.	09/01/2022	BNP Paribas Securities		191,692	200,000	3,300	2.B FE
37190A-AA-7	GEN LUX SARL GEN USA INC 1.750% 04/10/26	D.	09/02/2022	BNP Paribas Securities		86,459	95,000	679	2.C FE
404280-CX-5	HSBC HOLDINGS PLC 2.251% 11/22/27	D.	09/01/2022	BNP Paribas Securities		180,052	205,000	1,333	1.G FE
526250-AD-7	LENOVO GROUP LTD SERIES 144A 5.831% 01/27/28	D.	09/02/2022	Morgan Stanley		198,334	200,000	1,296	2.B FE
53944Y-AF-0	LLOYDS BANK PLC 4.450% 05/08/25	D.	09/01/2022	BNP Paribas Securities		197,970	200,000	2,917	1.G FE
55608J-AP-3	MACQUARIE GROUP LTD SERIES 144A 5.033% 01/15/30	D.	09/01/2022	BNP Paribas Securities		111,813	115,000	820	1.G FE
606822-CC-6	MITSUBISHI UFJ FIN GRP 2.341% 01/19/28	D.	09/01/2022	BNP Paribas Securities		179,132	200,000	611	1.G FE
62954H-BE-7	NXP BV NXP FDG NXP USA 4.400% 06/01/27	D.	09/01/2022	BNP Paribas Securities		101,495	105,000	1,412	2.B FE
74435K-AB-1	PRUDENTIAL PLC 3.625% 03/24/32	D.	09/01/2022	BNP Paribas Securities		76,191	85,000	1,387	1.F FE
86562M-CG-3	SUMITOMO MITSUI FINL GRP 1.902% 09/17/28	D.	09/02/2022	Deutsche Bank		168,476	200,000	1,796	1.G FE

E04.2

STATEMENT AS OF SEPTEMBER 30, 2022 OF THE AMH Health, LLC

SCHEDULE D - PART 3

Show All Long-Term Bonds and Stock Acquired During the Current Quarter

1	2	3	4	5	6	7	8	9	10
CUSIP Identification	Description	Foreign	Date Acquired	Name of Vendor	Number of Shares of Stock	Actual Cost	Par Value	Paid for Accrued Interest and Dividends	NAIC Designation, NAIC Designation Modifier and SVO Administrative Symbol
89400P-AG-8	TRANSURBAN FINANCE CO SERIES 144A 3.375% 03/22/27	D	09/22/2022	Deutsche Bank		83,070	90,000	34	2.A FE
89680Y-AC-9	TRITON CONTAINER SERIES 144A 3.150% 06/15/31	D	09/01/2022	Piper Jeffries & Co		164,010	213,000	1,510	2.C FE
902613-AH-1	UBS GROUP AG SERIES 144A 1.494% 08/10/27	D	09/01/2022	BNP Paribas Securities		172,544	200,000	216	1.G FE
1109999999	Subtotal - Bonds - Industrial and Miscellaneous (Unaffiliated)								
						19,542,899	21,065,433	129,188	XXX
46434V-87-8	ISHARES ULTRA SHORT TERM BON ETF		07/13/2022	WallachBeth		0.000	1,353,129	0	1.G
1619999999	Subtotal - Bonds - SVO Identified Funds								
						1,353,129	0	0	XXX
2509999997	Total - Bonds - Part 3								
						33,827,350	34,946,433	145,025	XXX
2509999998	Total - Bonds - Part 5								
						XXX	XXX	XXX	XXX
2509999999	Total - Bonds								
						33,827,350	34,946,433	145,025	XXX
4509999997	Total - Preferred Stocks - Part 3								
						0	XXX	0	XXX
4509999998	Total - Preferred Stocks - Part 5								
						XXX	XXX	XXX	XXX
4509999999	Total - Preferred Stocks								
						0	XXX	0	XXX
5989999997	Total - Common Stocks - Part 3								
						0	XXX	0	XXX
5989999998	Total - Common Stocks - Part 5								
						XXX	XXX	XXX	XXX
5989999999	Total - Common Stocks								
						0	XXX	0	XXX
5999999999	Total - Preferred and Common Stocks								
						0	XXX	0	XXX
6009999999	Totals								
						33,827,350	XXX	145,025	XXX

STATEMENT AS OF SEPTEMBER 30, 2022 OF THE AMH Health, LLC

SCHEDULE D - PART 4

Show All Long-Term Bonds and Stock Sold, Redeemed or Otherwise Disposed of During the Current Quarter

1	2	3	4	5	6	7	8	9	10	Change In Book/Adjusted Carrying Value					16	17	18	19	20	21	22		
										11	12	13	14	15									
CUSIP Identification	Description	For- eign	Disposal Date	Name of Purchaser	Number of Shares of Stock	Consid- eration	Par Value	Actual Cost	Prior Year Book/ Adjusted Carrying Value	Unrealized Valuation Increase/ (Decrease)	Current Year's (Amor- tization)/ Accretion	Current Year's Other Than Temporary Impairment Recogn- ized	Total Change in Book/ Adjusted Carrying Value (11 + 12 - 13)	Total Foreign Exchange Change in Book /Adjusted Carrying Value	Book/ Adjusted Carrying Value at Disposal Date	Foreign Exchange Gain (Loss) on Disposal	Realized Gain (Loss) on Disposal	Total Gain (Loss) on Disposal	Bond Interest/ Stock Dividends Received During Year	Stated Con- tractual Maturity Date	NAIC Desig- nation, NAIC Desig- nation Modifier and SVO Admini- strative Symbol		
91282Z-28-8	US TREASURY N B 1.500% 01/31/27		09/28/2022	Various		3,436,817	3,742,000	3,443,371	0	0	1,556	0	1,556	0	3,444,927	0	(8,111)	(8,111)	6,397	01/31/2027	1.A		
91282C-BE-0	US TREASURY N B 0.125% 01/15/24		09/22/2022	Various		4,179,060	4,386,000	4,189,315	0	0	5,027	0	5,027	0	4,194,343	0	(15,283)	(15,283)	922	01/15/2024	1.A		
91282C-DY-4	WI TREASURY SEC 1.875% 02/15/32		09/08/2022	Various		69,071	78,000	69,240	0	0	15	0	15	0	69,256	0	(184)	(184)	99	02/15/2032	1.A		
0109999999. Subtotal - Bonds - U.S. Governments						7,684,948	8,206,000	7,701,926	0	0	6,598	0	6,598	0	7,708,526	0	(23,578)	(23,578)	7,418	XXX	XXX		
126650-BV-1	CVS/CAREMARK CORP SERIES 144A 5.773% 01/10/33		09/10/2022	Redemption 100.0000		734	734	745	0	0	0	0	0	745	0	(11)	(11)	4	01/10/2033	2.B			
257812-AD-9	DONLEN FLEET LEASE FUNDING SERIES 2021-2 CLASS A2 144A 0.560% 12/11/34		09/10/2022	Paydown		4,978	4,978	4,802	0	0	176	0	176	0	4,978	0	0	0	2	12/11/2034	1.A FE		
67181D-AA-9	OAK STREET INVESTMENT GRADE SERIES 2020-1A CLASS A1 144A 1.850% 10/20/50		09/20/2022	Paydown		145	145	130	0	0	15	0	15	0	145	0	0	0	0	10/20/2050	1.A FE		
83405N-AA-4	SOCIAL PROFESSIONAL LOAN PROG SERIES 2021-B CLASS AFX 144A 1.140% 02/15/47		09/15/2022	Paydown		1,453	1,453	1,266	0	0	187	0	187	0	1,453	0	0	0	1	02/15/2047	1.A FE		
86212V-AE-4	STORE MASTER FUNDING LLC SERIES 2018-1A CLASS A2 144A 4.290% 10/20/48		09/20/2022	Paydown		83	83	81	0	0	3	0	3	0	83	0	0	0	0	10/20/2048	1.A FE		
92212K-AA-4	VANTAGE DATA CENTERS LLC SERIES 2019-1A CLASS A2 144A 3.188% 07/15/44		09/15/2022	Paydown		51	51	49	0	0	2	0	2	0	51	0	0	0	0	07/15/2044	1.G FE		
1109999999. Subtotal - Bonds - Industrial and Miscellaneous (Unaffiliated)						7,444	7,444	7,073	0	0	383	0	383	0	7,455	0	(11)	(11)	7	XXX	XXX		
2509999997. Total - Bonds - Part 4						7,692,392	8,213,444	7,708,999	0	0	6,981	0	6,981	0	7,715,981	0	(23,589)	(23,589)	7,425	XXX	XXX		
2509999998. Total - Bonds - Part 5						XXX	XXX	XXX	XXX	XXX	XXX	XXX	XXX	XXX	XXX	XXX	XXX	XXX	XXX	XXX	XXX	XXX	
2509999999. Total - Bonds						7,692,392	8,213,444	7,708,999	0	0	6,981	0	6,981	0	7,715,981	0	(23,589)	(23,589)	7,425	XXX	XXX		
4509999997. Total - Preferred Stocks - Part 4						0	XXX	0	0	0	0	0	0	0	0	0	0	0	0	0	0	XXX	XXX
4509999998. Total - Preferred Stocks - Part 5						XXX	XXX	XXX	XXX	XXX	XXX	XXX	XXX	XXX	XXX	XXX	XXX	XXX	XXX	XXX	XXX	XXX	XXX
4509999999. Total - Preferred Stocks						0	XXX	0	0	0	0	0	0	0	0	0	0	0	0	0	0	XXX	XXX
464288-58-8	ISHARES BARCLAYS MBS BOND FUND		07/13/2022	WallachBeth	13,889,000	1,354,182		1,489,844	1,489,844	0	0	0	0	0	1,500,545	0	(135,663)	(135,663)	12,491				
5019999999. Subtotal - Common Stocks - Industrial and Miscellaneous (Unaffiliated) Publicly Traded						1,354,182	XXX	1,489,844	1,489,844	0	0	0	0	0	1,500,545	0	(135,663)	(135,663)	12,491	XXX	XXX		
5989999997. Total - Common Stocks - Part 4						1,354,182	XXX	1,489,844	1,489,844	0	0	0	0	0	1,500,545	0	(135,663)	(135,663)	12,491	XXX	XXX		
5989999998. Total - Common Stocks - Part 5						XXX	XXX	XXX	XXX	XXX	XXX	XXX	XXX	XXX	XXX	XXX	XXX	XXX	XXX	XXX	XXX	XXX	
5989999999. Total - Common Stocks						1,354,182	XXX	1,489,844	1,489,844	0	0	0	0	0	1,500,545	0	(135,663)	(135,663)	12,491	XXX	XXX		
5999999999. Total - Preferred and Common Stocks						1,354,182	XXX	1,489,844	1,489,844	0	0	0	0	0	1,500,545	0	(135,663)	(135,663)	12,491	XXX	XXX		
6009999999 - Totals						9,046,574	XXX	9,198,843	1,489,844	0	0	6,981	0	6,981	0	9,216,526	0	(159,252)	(159,252)	19,916	XXX	XXX	

E05

Schedule DB - Part A - Section 1 - Options, Caps, Floors, Collars, Swaps and Forwards Open

N O N E

Schedule DB - Part B - Section 1 - Futures Contracts Open

N O N E

Schedule DB - Part B - Section 1B - Brokers with whom cash deposits have been made

N O N E

Schedule DB - Part D - Section 1 - Counterparty Exposure for Derivative Instruments Open

N O N E

Schedule DB - Part D-Section 2 - Collateral for Derivative Instruments Open - Pledged By

N O N E

Schedule DB - Part D-Section 2 - Collateral for Derivative Instruments Open - Pledged To

N O N E

Schedule DB - Part E - Derivatives Hedging Variable Annuity Guarantees

N O N E

STATEMENT AS OF SEPTEMBER 30, 2022 OF THE AMH Health, LLC

SCHEDULE DL - PART 1
SECURITIES LENDING COLLATERAL ASSETS

Reinvested Collateral Assets Owned Current Statement Date

(Securities lending collateral assets reported in aggregate on Line 10 of the Assets page and not included on Schedules A, B, BA, D, DB and E)

1	2	3	4	5	6	7
CUSIP Identification	Description	Code	NAIC Designation, NAIC Designation Modifier and SVO Administrative Symbol	Fair Value	Book/Adjusted Carrying Value	Maturity Date
912810-FT-0	UNITED STATES OF AMERICA BOND FIXED 4.5% 15/FEB/2036 USD 100		1.A	782	782	02/15/2036
912810-PU-6	UNITED STATES OF AMERICA BOND FIXED 5% 15/MAY/2037 USD 100		1.A	18	18	05/15/2037
912810-QA-9	UNITED STATES OF AMERICA BOND FIXED 3.5% 15/FEB/2039 USD 100		1.A	64	64	02/15/2039
912810-QB-7	UNITED STATES OF AMERICA BOND FIXED 4.25% 15/MAY/2039 USD 100		1.A	170	170	05/15/2039
912810-QE-1	UNITED STATES OF AMERICA BOND FIXED 4.625% 15/FEB/2040 USD 100		1.A	188	188	02/15/2040
912810-QH-4	UNITED STATES OF AMERICA BOND FIXED 4.375% 15/MAY/2040 USD 100		1.A	348	348	05/15/2040
912810-SR-0	UNITED STATES OF AMERICA BOND FIXED 1.125% 15/MAY/2040 USD 100		1.A	0	0	05/15/2040
912810-QK-7	UNITED STATES OF AMERICA BOND FIXED 3.875% 15/AUG/2040 USD 100		1.A	84	84	08/15/2040
912810-SQ-2	UNITED STATES OF AMERICA BOND FIXED 1.125% 15/AUG/2040 USD 100		1.A	79	79	08/15/2040
912810-ST-6	UNITED STATES OF AMERICA BOND FIXED 1.375% 15/NOV/2040 USD 100		1.A	127	127	11/15/2040
912810-QL-5	UNITED STATES OF AMERICA BOND FIXED 4.25% 15/NOV/2040 USD 100		1.A	48	48	11/15/2040
912810-QN-1	UNITED STATES OF AMERICA BOND FIXED 4.75% 15/FEB/2041 USD 100		1.A	0	0	02/15/2041
912810-QS-0	UNITED STATES OF AMERICA BOND FIXED 3.75% 15/AUG/2041 USD 100		1.A	380	380	08/15/2041
912810-TG-2	UNITED STATES OF AMERICA BOND FIXED 2% 15/NOV/2041 USD 100		1.A	255	255	11/15/2041
912810-QT-8	UNITED STATES OF AMERICA BOND FIXED 3.125% 15/NOV/2041 USD 100		1.A	5	5	11/15/2041
912810-TF-5	UNITED STATES OF AMERICA BOND FIXED 2.375% 15/FEB/2042 USD 100		1.A	162	162	02/15/2042
912810-QX-9	UNITED STATES OF AMERICA BOND FIXED 2.75% 15/AUG/2042 USD 100		1.A	6	6	08/15/2042
912810-QZ-4	UNITED STATES OF AMERICA BOND FIXED 3.125% 15/FEB/2043 USD 100		1.A	20	20	02/15/2043
912810-RC-4	UNITED STATES OF AMERICA BOND FIXED 3.625% 15/AUG/2043 USD 100		1.A	61	61	08/15/2043
912810-RD-2	UNITED STATES OF AMERICA BOND FIXED 3.75% 15/NOV/2043 USD 100		1.A	110	110	11/15/2043
912810-RE-0	UNITED STATES OF AMERICA BOND FIXED 3.625% 15/FEB/2044 USD 100		1.A	128	128	02/15/2044
912810-RH-3	UNITED STATES OF AMERICA BOND FIXED 3.125% 15/AUG/2044 USD 100		1.A	55	55	08/15/2044
912810-RJ-9	UNITED STATES OF AMERICA BOND FIXED 3% 15/NOV/2044 USD 100		1.A	7	7	11/15/2044
912810-RL-4	UNITED STATES OF AMERICA BOND FIXED 0.75% 15/FEB/2045 USD 100		1.A	0	0	02/15/2045
912810-RM-2	UNITED STATES OF AMERICA BOND FIXED 3% 15/MAY/2045 USD 100		1.A	160	160	05/15/2045
912810-RN-0	UNITED STATES OF AMERICA BOND FIXED 2.875% 15/AUG/2045 USD 100		1.A	427	427	08/15/2045
912810-RQ-3	UNITED STATES OF AMERICA BOND FIXED 2.5% 15/FEB/2046 USD 100		1.A	115	115	02/15/2046
912810-RR-1	UNITED STATES OF AMERICA BOND FIXED 1% 15/FEB/2046 USD 100		1.A	13	13	02/15/2046
912810-RS-9	UNITED STATES OF AMERICA BOND FIXED 2.5% 15/MAY/2046 USD 100		1.A	138	138	05/15/2046
912810-RT-7	UNITED STATES OF AMERICA BOND FIXED 2.25% 15/AUG/2046 USD 100		1.A	271	271	08/15/2046
912810-RU-4	UNITED STATES OF AMERICA BOND FIXED 2.875% 15/NOV/2046 USD 100		1.A	344	344	11/15/2046
912810-RV-2	UNITED STATES OF AMERICA BOND FIXED 3% 15/FEB/2047 USD 100		1.A	212	212	02/15/2047
912810-RX-8	UNITED STATES OF AMERICA BOND FIXED 3% 15/MAY/2047 USD 100		1.A	80	80	05/15/2047
912810-RY-6	UNITED STATES OF AMERICA BOND FIXED 2.75% 15/AUG/2047 USD 100		1.A	58	58	08/15/2047
912810-RZ-3	UNITED STATES OF AMERICA BOND FIXED 2.75% 15/NOV/2047 USD 100		1.A	217	217	11/15/2047
912810-SH-2	UNITED STATES OF AMERICA BOND FIXED 2.875% 15/MAY/2049 USD 100		1.A	113	113	05/15/2049
912810-SJ-8	UNITED STATES OF AMERICA BOND FIXED 2.25% 15/AUG/2049 USD 100		1.A	226	226	08/15/2049
912810-SL-3	UNITED STATES OF AMERICA BOND FIXED 2% 15/FEB/2050 USD 100		1.A	135	135	02/15/2050
912810-SN-9	UNITED STATES OF AMERICA BOND FIXED 1.25% 15/MAY/2050 USD 100		1.A	232	232	05/15/2050
912810-SP-4	UNITED STATES OF AMERICA BOND FIXED 1.375% 15/AUG/2050 USD 100		1.A	112	112	08/15/2050
912810-SU-3	UNITED STATES OF AMERICA BOND FIXED 1.875% 15/FEB/2051 USD 100		1.A	0	0	02/15/2051
912810-SX-7	UNITED STATES OF AMERICA BOND FIXED 2.375% 15/MAY/2051 USD 100		1.A	1,484,800	1,484,800	05/15/2051
912810-SY-7	UNITED STATES OF AMERICA BOND FIXED 2.375% 15/MAY/2051 USD 100		1.A	375	375	05/15/2051
912810-TB-4	UNITED STATES OF AMERICA BOND FIXED 1.875% 15/NOV/2051 USD 100		1.A	83	83	11/15/2051
912810-TD-0	UNITED STATES OF AMERICA BOND FIXED 2.25% 15/FEB/2052 USD 100		1.A	11	11	02/15/2052
912810-TG-3	UNITED STATES OF AMERICA BOND FIXED 2.875% 15/MAY/2052 USD 100		1.A	189	189	05/15/2052
0019999999	Subtotal - Bonds - U.S. Governments - Issuer Obligations			3,349,335	3,349,335	XXX
0109999999	Total - U.S. Government Bonds			3,349,335	3,349,335	XXX
0309999999	Total - All Other Government Bonds			0	0	XXX
0509999999	Total - U.S. States, Territories and Possessions Bonds			0	0	XXX
0709999999	Total - U.S. Political Subdivisions Bonds			0	0	XXX
0909999999	Total - U.S. Special Revenues Bonds			0	0	XXX
1109999999	Total - Industrial and Miscellaneous (Unaffiliated) Bonds			0	0	XXX
1309999999	Total - Hybrid Securities			0	0	XXX
1509999999	Total - Parent, Subsidiaries and Affiliates Bonds			0	0	XXX
1909999999	Subtotal - Unaffiliated Bank Loans			0	0	XXX
2419999999	Total - Issuer Obligations			3,349,335	3,349,335	XXX
2429999999	Total - Residential Mortgage-Backed Securities			0	0	XXX
2439999999	Total - Commercial Mortgage-Backed Securities			0	0	XXX
2449999999	Total - Other Loan-Backed and Structured Securities			0	0	XXX
2459999999	Total - SVO Identified Funds			0	0	XXX
2469999999	Total - Affiliated Bank Loans			0	0	XXX
2479999999	Total - Unaffiliated Bank Loans			0	0	XXX
2489999999	Total - Unaffiliated Certificates of Deposit			0	0	XXX
2509999999	Total Bonds			3,349,335	3,349,335	XXX
4109999999	Total - Preferred Stocks (Schedule D, Part 2, Section 1 type) - Industrial and Miscellaneous (Unaffiliated)			0	0	XXX
4409999999	Total - Preferred Stocks (Schedule D, Part 2, Section 1 type) - Parent, Subsidiaries and Affiliates			0	0	XXX
4509999999	Total - Preferred Stocks (Schedule D, Part 2, Section 1 type)			0	0	XXX
5109999999	Total - Common Stocks (Schedule D, Part 2, Section 2 type) - Industrial and Miscellaneous (Unaffiliated)			0	0	XXX
5409999999	Total - Common Stocks (Schedule D, Part 2, Section 2 type) - Mutual Funds			0	0	XXX
5609999999	Total - Common Stocks (Schedule D, Part 2, Section 2 type) - Unit Investment Trusts			0	0	XXX
5809999999	Total - Common Stocks (Schedule D, Part 2, Section 2 type) - Closed-End Funds			0	0	XXX
5979999999	Total - Common Stocks (Schedule D, Part 2, Section 2 type) - Parent, Subsidiaries and Affiliates			0	0	XXX
5989999999	Total - Common Stocks (Schedule D, Part 2, Section 2 type)			0	0	XXX
5999999999	Total - Preferred and Common Stocks			0	0	XXX
000000-00-0	UNITED STATES OF AMERICA NOTES FIXED 1.75% 31/JAN/2023 USD 100		1.A	198	198	01/31/2023
000000-00-0	UNITED STATES OF AMERICA BILL ZERO CPN 09/FEB/2023 USD 100		1.A	101	101	02/09/2023
000000-00-0	UNITED STATES OF AMERICA NOTES FIXED 2.625% 28/FEB/2023 USD 100		1.A	299	299	02/28/2023
000000-00-0	UNITED STATES OF AMERICA NOTES FIXED 0.125% 31/MAR/2023 USD 100		1.A	1	1	03/31/2023
000000-00-0	UNITED STATES OF AMERICA NOTES FIXED 0.125% 31/JUL/2023 USD 100		1.A	212	212	07/31/2023
000000-00-0	UNITED STATES OF AMERICA NOTES FIXED 2.5% 15/AUG/2023 USD 100		1.A	7	7	08/15/2023
000000-00-0	UNITED STATES OF AMERICA NOTES FIXED 2.75% 31/AUG/2023 USD 100		1.A	309	309	08/31/2023
000000-00-0	UNITED STATES OF AMERICA NOTES FIXED 0.125% 31/AUG/2023 USD 100		1.A	187	187	08/31/2023
000000-00-0	UNITED STATES OF AMERICA NOTES FIXED 0.125% 15/SEP/2023 USD 100		1.A	23	23	09/15/2023
9509999999	Total - Short-Term Invested Assets (Schedule DA type)			1,337	1,337	XXX
	UNITED STATES OF AMERICA BILL ZERO CPN 06/OCT/2022 USD 100		1.A	122	122	10/06/2022
	UNITED STATES OF AMERICA BILL ZERO CPN 25/OCT/2022 USD 100		1.A	8	8	10/25/2022
	UNITED STATES OF AMERICA BILL ZERO CPN 10/NOV/2022 USD 100		1.A	217	217	11/10/2022
	UNITED STATES OF AMERICA NOTES FIXED 2% 30/NOV/2022 USD 100		1.A	197	197	11/30/2022
	UNITED STATES OF AMERICA NOTES FIXED 0.125% 30/NOV/2022 USD 100		1.A	45	45	11/30/2022
	UNITED STATES OF AMERICA BILL ZERO CPN 01/DEC/2022 USD 100		1.A	180	180	12/01/2022
9709999999	Total - Cash Equivalents (Schedule E Part 2 type)			769	769	XXX
9999999999	Totals			3,351,441	3,351,441	XXX

General Interrogatories:

- Total activity for the year Fair Value \$1,790,202 Book/Adjusted Carrying Value \$1,790,202
- Average balance for the year Fair Value \$1,603,868 Book/Adjusted Carrying Value \$1,603,868
- Reinvested securities lending collateral assets book/adjusted carrying value included in this schedule by NAIC designation:
 NAIC 1 \$3,351,441 NAIC 2 \$ NAIC 3 \$ NAIC 4 \$ NAIC 5 \$ NAIC 6 \$

**SCHEDULE DL - PART 2
SECURITIES LENDING COLLATERAL ASSETS**

Reinvested Collateral Assets Owned Current Statement Date

(Securities lending collateral assets included on Schedules A, B, BA, D, DB and E and not reported in aggregate on Line 10 of the Assets page)

1	2	3	4	5	6	7
CUSIP Identification	Description	Code	NAIC Designation, NAIC Designation Modifier and SVO Administrative Symbol	Fair Value	Book/Adjusted Carrying Value	Maturity Date
NONE						
999999999 - Totals						XXX

General Interrogatories:

- | | | |
|---------------------------------|---------------------|---------------------------------------|
| 1. Total activity for the year | Fair Value \$ | Book/Adjusted Carrying Value \$ |
| 2. Average balance for the year | Fair Value \$ | Book/Adjusted Carrying Value \$ |

SCHEDULE E - PART 1 - CASH

Month End Depository Balances

1 Depository	2 Code	3 Rate of Interest	4 Amount of Interest Received During Current Quarter	5 Amount of Interest Accrued at Current Statement Date	Book Balance at End of Each Month During Current Quarter			9 *
					6 First Month	7 Second Month	8 Third Month	
Bank of America 101 S. Tryon Street, 19th Floor, Charlotte, NC 28255		0.000	0	0	(328,402)	(1,844,226)	(363,105)	XXX
JP Morgan Chase 4 New York Plaza, 13th Floor, New York, NY 10004		0.000	0	0	36,867,539	40,901,507	56,781,580	XXX
0199998. Deposits in ... depositories that do not exceed the allowable limit in any one depository (See instructions) - Open Depositories	XXX	XXX						XXX
0199999. Totals - Open Depositories	XXX	XXX	0	0	36,539,137	39,057,281	56,418,475	XXX
0299998. Deposits in ... depositories that do not exceed the allowable limit in any one depository (See instructions) - Suspended Depositories	XXX	XXX						XXX
0299999. Totals - Suspended Depositories	XXX	XXX	0	0	0	0	0	XXX
0399999. Total Cash on Deposit	XXX	XXX	0	0	36,539,137	39,057,281	56,418,475	XXX
0499999. Cash in Company's Office	XXX	XXX	XXX	XXX				XXX
.....								
.....								
.....								
.....								
.....								
.....								
.....								
.....								
.....								
.....								
.....								
.....								
0599999. Total - Cash	XXX	XXX	0	0	36,539,137	39,057,281	56,418,475	XXX

Schedule E - Part 2 - Cash Equivalents - Investments Owned End of Current Quarter

N O N E