

ALB POOL SURVEY

Monitoring Your Pool for the Asian Longhorned Beetle

Introduction. The Asian longhorned beetle (ALB) is an invasive insect from Asia that has killed thousands of trees in the United States. Currently, ALB is known only in Massachusetts, New York, and Ohio. To stop its spread, we need as many people as possible looking for the beetle, and the common signs of tree damage that it causes. Most all ALB infestations in the U.S. have been discovered by residents. You are the key to keeping forests free of ALB! Thank you for protecting Maine's forests by participating in the ALB Pool Survey.

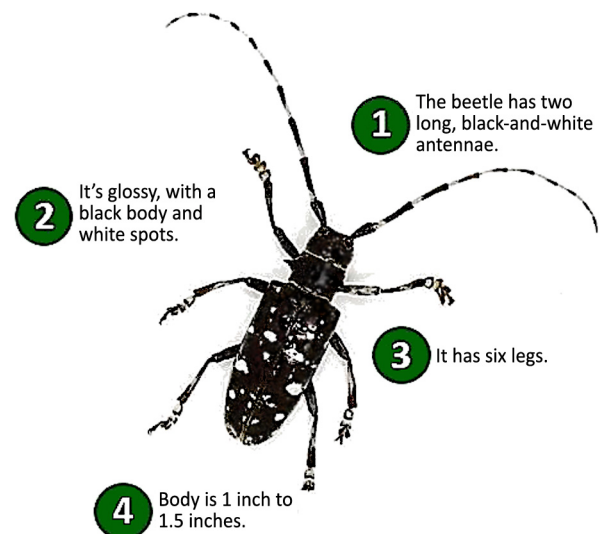
How to check your pool for ALB

- **Inspect your filter.** From late July until you close your pool, look at the debris you collect in your pool filter or skimmer.
- **Look for ALB.** ALB is in the family Cerambycidae, the longhorned beetles. Use the visual aids below to help you identify the beetle.
- **Take a photo.** Photograph any insect you think might be ALB. We need a good view of the insect's back, as shown on the right.
- **Send the photo to DACF.** There are two ways to send photos. *Please include your name and address.*
 - **Email.** Send an email to bugwatchme.agr@maine.gov with the subject heading "ALB Pool Survey".
 - **Mail.** Send a printed image to Maine Bug Watch at 28 State House Station, Augusta, ME 04333
- **Save the insect.** Freeze the insect in a plastic bag or container until you hear back from us.



Identifying ALB

- **Description.** ALB is large, ranging from 1" to 1½" long, with very long, black and white antennae. The body is glossy black with irregular distinct white spots.
- **Hosts.** ALB feeds on many species of hardwood trees, including maple, birch, ash, willow and sycamore.
- **Activity.** In Massachusetts, adults are typically seen from late July through fall, depending on the weather. ALB is not known to occur in Maine.



Common ALB Look-alikes

These insects are common in Maine and are **NOT** the Asian longhorned beetle.

Whitespotted pine sawyer

- **Description.** $\frac{3}{4}$ " – 1" long. Dull or bronzy-black, may be mottled with white patches. Long, faintly banded antennae. White scutellum (triangle spot in the center of the "shoulders"). Associated with declining pine trees.



Northeastern sawyer

- **Description.** 1" - 1 $\frac{3}{4}$ " long. Mottled, light brown/white. No distinct spots. White scutellum. Associated with declining pine trees.



Eyed click beetle

- **Description.** 1" - 1 $\frac{3}{4}$ " long. Black with white speckles. Black "eye spots" on pronotum. Predaceous on other insects.



Broad-necked root borer

- **Description.** 1" - 2" long. Black with no white markings. Solid black antennae.



Maine Department of Agriculture, Conservation and Forestry

28 State House Station, 90 Blossom Lane

Augusta, ME 04333

P: (207) 287-7551

E: bugwatchme.agr@maine.gov

www.maine.gov/alb



CREATIVE CREDIT

New York Department of Environmental Conservation

PHOTO CREDITS

Steve Katovich, USDA Forest Service, Bugwood.org;

R. Routledge, Sault College, Bugwood.org;

Jon Yuschock, Bugwood.org;

Gerald J. Lenhard, Louisiana State University, Bugwood.org