

# Eversource Veg M – By the Numbers



**13,220 Square Mile Operational Area**

**40,660 Linear Miles of Circuits**

**500 Communities**

**~10,200 Miles Maintained Annually**

**50 Employees**

**475 Contractor Crews Working Daily**



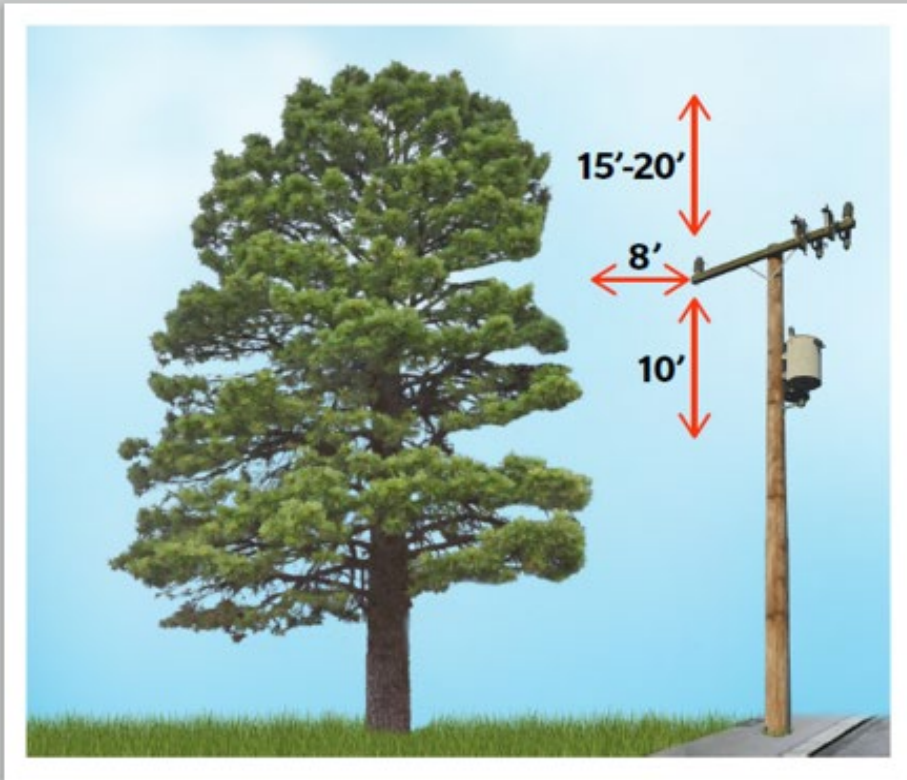
# Distribution Programs

- **Scheduled Maintenance Trimming (SMT)**
  - Management of vegetation along distribution circuits
- **Enhanced Tree Trimming (ETT)**
  - Increased clearance along major portions of circuit
- **Reliability Tree Work (RTW)**
  - Increased clearance along major portions of circuit
- **Tree Removal**
  - Removal of hazard and risk trees
- **Right-of Way Maintenance**
  - Management of vegetation within the cleared areas of the ROW
- **Mid-Cycle**
  - Between cycle trimming
- **Vine Program**
  - Management of vines growing on poles and guy wires





# NH Distribution Clearances



## Distribution Clearances

- 8 feet to the side, 10 feet below and 15 feet above the wires
- It may be more for distribution lines that serve many customers and critical facilities



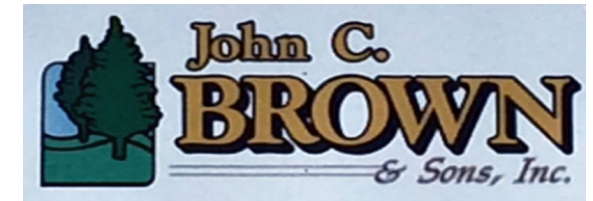


## ES NH Scheduled Maintenance Trimming:

- The NH system is maintained on a 4 – 5-year cyclical trimming schedule.
- In unison with the maintenance trimming the entire circuitry scheduled for the year is also profiled by our professional arborist team for hazard tree removals.
  - The goal of this hazard assessment is to identify, permission and remove trees that are considered high risk to fail during the next 4 – 5-year trimming cycle.



# Vegetation Management Contractors:



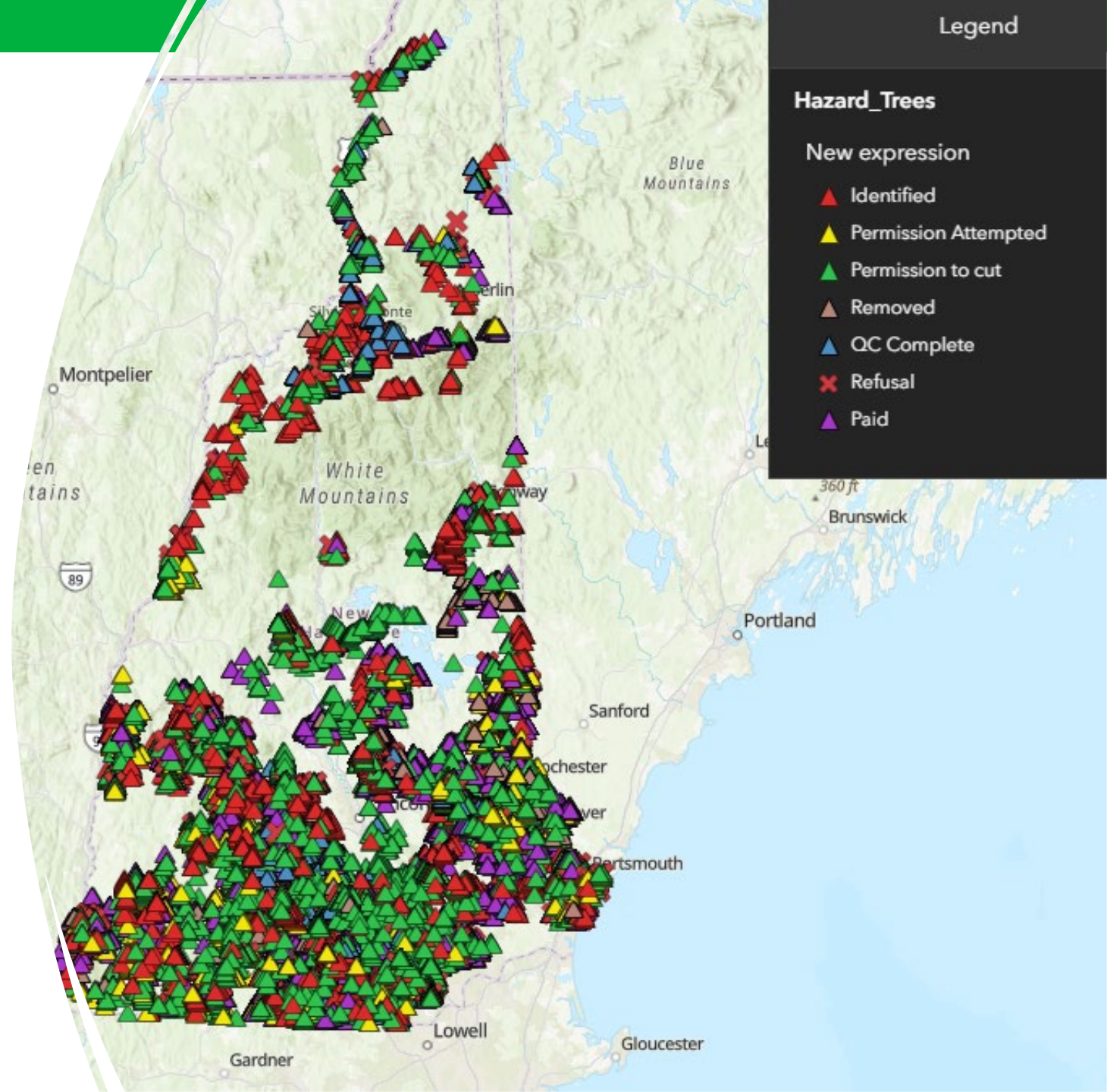
# Tall-growing Native Species: Target Hazard Species

- Red Maple
- Birch
- Cherry
- Pine
- Poplar
- Ash
- Silver Maple
- Willow
- and more...

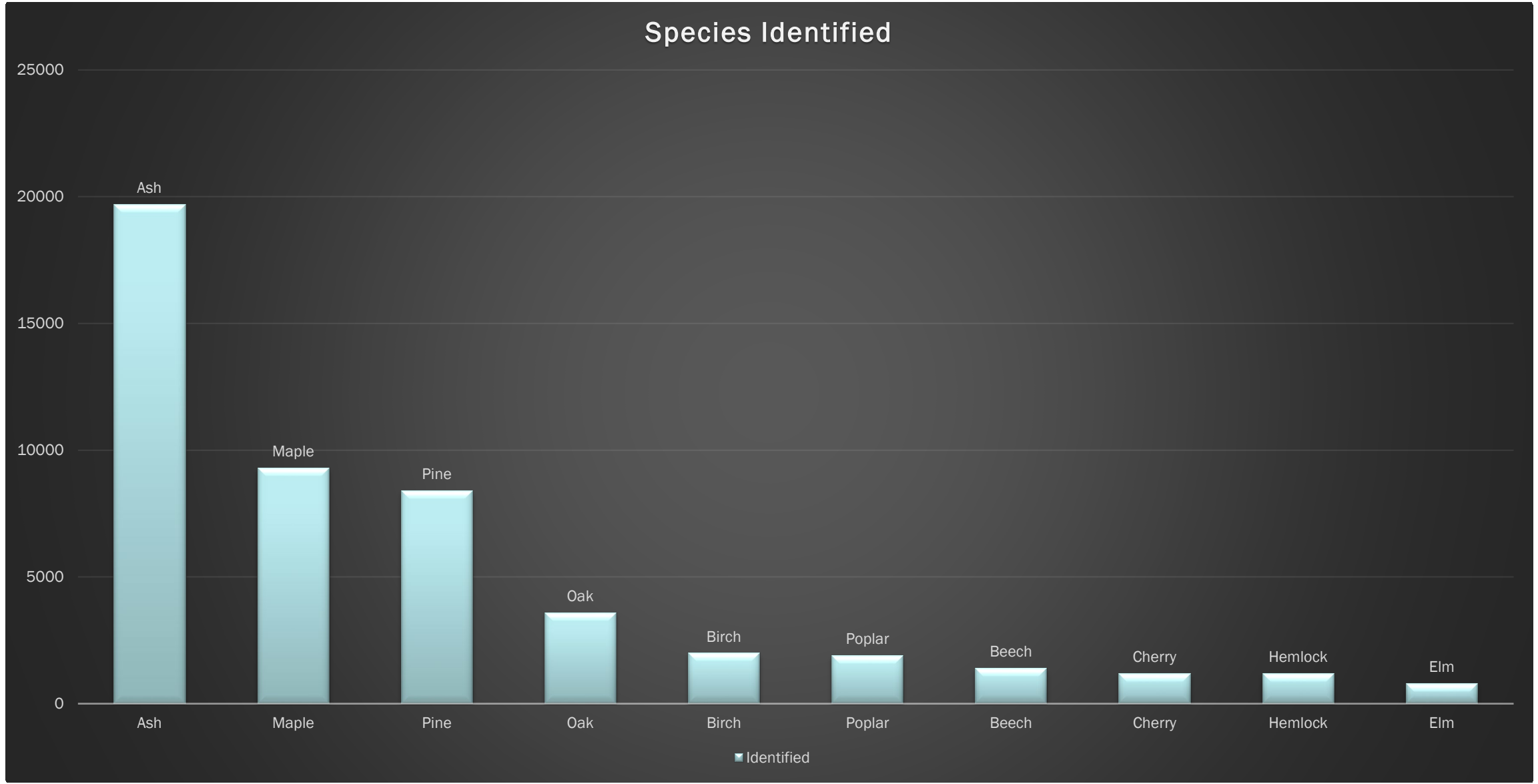


# Eversource Hazard Tree Tracking:

- In February of 2022 we started using ArcGIS to help manage our Hazard Tree program in NH.
- Since then, we have identified 51,700 hazard trees on the system.
- 19,700 of them are ASH

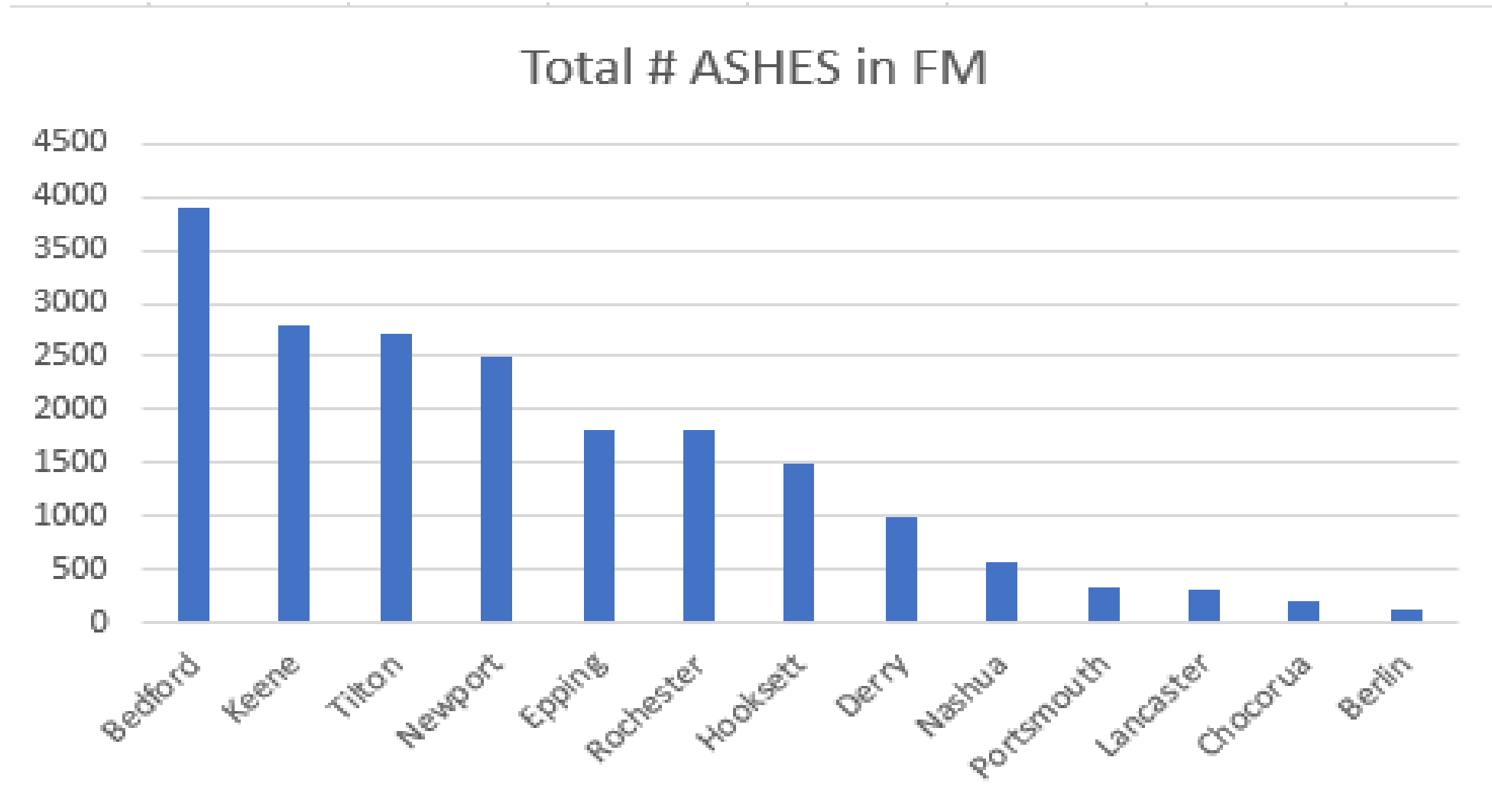


### Species Identified





# Ash Trees By Area Work Center:









## Right Of Way Planning:

- Proactive approach
- Ash decline/death in difficult access locations
- Contractor safety





## Community Collaboration:

During our scheduled maintenance trimming ES looks to partner with local DPW's and other municipal entities to assess potential hazard trees within their community.

As EAB continues to advance throughout NH these community requests have increased.

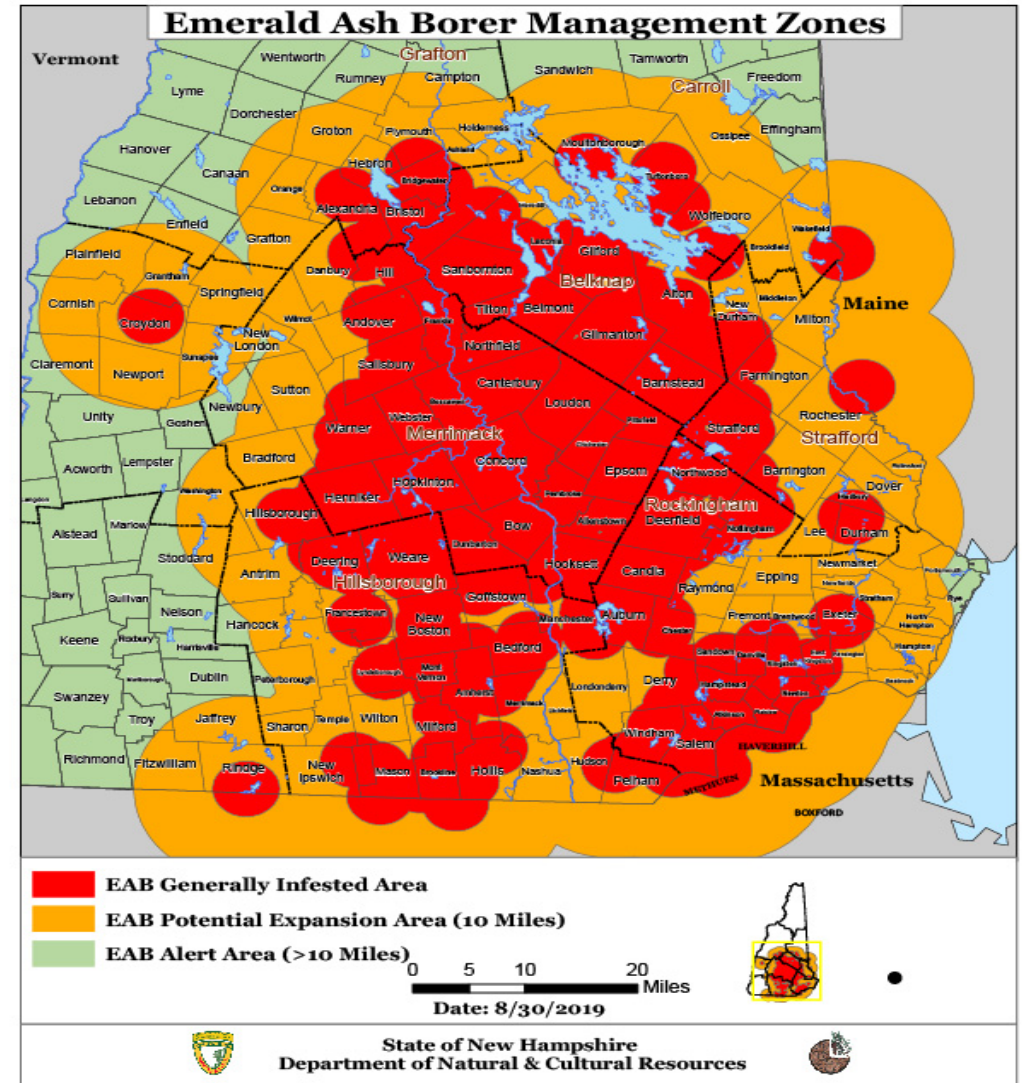
ES works to balance our regulatory requirements while we strive to support the communities that we serve.

## Community Support:

- Traffic control
- Wood removal
- Public outreach/education







Questions?