

Traffic Volume Counts 2006 Annual Report



MaineDOT

**Data collected and published by the
State of Maine**

**Department of Transportation
Traffic Engineering Division**

**In cooperation with the
United States Department of Transportation
Federal Highway Administration**

TABLE of CONTENTS

Forward

Continuous Count Program

24 Hour Traffic Data Collection Program

Description of Headings, Symbols, and Abbreviations

Map of State Count Zones

Graph of 2006 Weekly Group Mean Factors

List of 2006 Weekly Group Mean Factors

List of 2006 Weekly Group Mean Factors as a Percent of AADT

Traffic Volume Counts by County, Town, and Route

FOREWORD

The Department of Transportation, Traffic Engineering Division, and Traffic Monitoring Section is responsible for the collection of all types of traffic data and maintenance of a statewide traffic volume database. The reduction and reporting of traffic volumes and vehicle classification data are accomplished through two types of count programs. They are as follows:

CONTINUOUS COUNT PROGRAM

Traffic volumes are monitored on a continuous year round basis at forty-three permanent recorder sites located on major highways throughout the State. These hourly counts are collected to produce an average weekday figure, a weekly average day, a monthly average day, and a monthly average weekday. This information is compiled to develop an Annual Average Daily Traffic (AADT) figure for each location. The AADT is computed from the average of the weekly average day totals for the year.

The increasing demand to determine the types of vehicles (e.g. passenger cars, single-unit trucks, and semi's) traveling Maine's highways has prompted the development of a Continuous Classification Program. Currently, the department has eleven locations along routed highways that collect data based on thirteen categories as defined by the Federal Highway Administration. An AADT is computed based on the total volume as well as summary data for individual vehicle types. Future plans include the installation of additional sites statewide over the next several years.

24 HOUR TRAFFIC DATA COLLECTION PROGRAM

Between April 1st and November 15th of each year, 24 hour traffic counts (i.e., coverage counts) are gathered to monitor traffic flow and changes in traffic patterns. These counts are generally taken at intersections with major routes and/or other significant roads, Compact Urban Lines (CUL), or Town Lines (TL), or in coordination with ongoing projects or special traffic studies for the Department.

Additionally, 24-hour vehicle classification counts are performed in conjunction with the coverage counts to provide a comprehensive view of traffic along the routed highways.

The State is divided into three count zones:

ZONE I : Southwestern Maine to western Penobscot Bay region. This zone includes all of York, Cumberland, Sagadahoc, Lincoln, Knox, and Waldo counties, Oxford county from Albany Twp/Waterboro West & Oxford, Otisfield, as well as Poland, and Mechanic Falls in Androscoggin county.

ZONE II : Western/Central Maine and eastern Penobscot Bay region. This zone includes all of Androscoggin except Poland, and Mechanic Falls, Franklin, Kennebec counties, the remainder of Oxford county, Somerset county from Bingham south plus between Flagstaff Lake area and Kennebec River, southern Penobscot county, and western Hancock county.

ZONE III : Northern and eastern Maine. This zone includes all of Aroostook, Piscataquis, Washington counties, northern and southeastern Hancock county, Penobscot county from Lagrange north, and the remainder of Somerset county.

These zones are counted on a five year cycle: Zones I and II are counted twice and Zone III once during each five year period. The coverage count program also consists of the “Special Counts” taken each year to satisfy Departmental needs, local requests, and Federal requirements. These include the annual collection of data for the State’s four urbanized areas (BACTS, KACTS, ATRC, and PACTS), Interstate System counts, and data collected from the various traffic studies conducted throughout the year. The 2006 Program included 4361 counts accomplished.

Once the AADT’s have been computed for all of the permanent recorder locations, weekly factors for each station are computed by dividing the AADT by each average weekly figure. Those stations which exhibit similar traffic patterns are assembled and placed into one of three groups:

URBAN : Roadways which carry commuter traffic and exhibit little seasonal change in traffic volumes.

ARTERIAL : Roadways which carry commuter traffic but exhibit moderate seasonal changes in traffic volumes.

RECREATIONAL : Roadways which are heavily influenced by seasonal traffic.

Within each of the three groups, a factor for each week is computed by averaging the weekly factors from each station within the group.

The 2006 Weekly Group Mean Factors were developed by averaging the Weekly Group Mean Factor for 2003, 2004 and 2005. The following pages show the graph of the 2006 Weekly Group Mean Factors, a list of these factors, and the 2006 Weekly Group Mean Factor as a percent of the AADT.

The 24-hour raw data may now be grouped and assigned a factor to produce an AADT. Growth factors for expanding traffic in uncounted zones are developed utilizing data from the permanent recorders and comparing it to the data from the previous year.

The updated AADT's are entered into the Maine Department of Transportation's database to be used by various Departmental employees.

DESCRIPTION of HEADINGS, SYMBOLS, AND ABBREVIATIONS

The following is a description of the column headings, symbols, and abbreviations used for the Coverage Count Section.

TOWN The town in which a count was taken

ROUTE The road or highway on which the count was taken.

Non-Interstate Highways and Roads

---- X indicates a Routed Highway

0196X = SR 196 0001X = US Route 1

---- A or --- B indicates an Alternate Routed Highway

0001A = US Route 1A 0009B = SR 9B

---- C indicates a Business Route

0001C = Business US Route 1, 1A, or 1B

0025C = Business SR 25

Just a number with no letter OR no numbers or letters indicates a non-routed highway

= Pine Hill Road 00001 = Hubbard Road

01414 = IR 1414 00991 = IR 991 (Biddeford Road)

Interstate System

---- X indicates Northbound or Eastbound

0095X = I-95 Northbound

0395X = I-395 Eastbound

---- S indicates Southbound

0095S = I-95 Southbound

---- W indicates Westbound

0395W = I-395 Westbound

LOCATION

A description of where the count was taken.

APP = Approach

ART = Arterial

AVE = Avenue

BK = Brook

BLVD = Boulevard

BR = Bridge

CIR = Circle

CL = County Line

CNR = Corner

CONN = Connector

CTR = Center

CUL = Compact Urban Line

CWY = Cause way

CV = Cove

DR = Drive

EB = Eastbound

ENT = Entrance

FL=Fall

FLS=Falls

FT = Fort

HTS = Heights

HWY = Highway

INT'L = International

IR = Inventory Road

LG = Long

LK = Lake

LN = Lane

LWR = Lower

MEM = Memorial

MT = Mount

MTN = Mountain

NB = Northbound

NH = New Hampshire

OW = One Way

PD = Pond

PK = Park

PKWY = Park Way

PL = Place

PT = Point

PW = Private Way

PZ = Plaza

RD = Road

RDG = Ridge

RMP = Ramp

RR = Railroad

RV = River

SB = Southbound

SL = State Line

SQ = Square

SR = State Route

ST = Street

STA = Station

STR = Stream

TER = Terrace

TL = Town Line

TPK = Turnpike

TR = Trail

UPR = Upper

US = United States Route

WB = Westbound

N/O, NE/O, E/O, etc. = North of, Northeast of, East of, etc.

TYPE

Category for each count taken.

- A Permanent Recorder Count
- B BACTS Count
- C Coverage Count
- I Interstate Count
- K KACTS Count
- L ATRC Count (Formerly LACTS)
- M Municipal, Town, Regional Count
- P PACTS Count
- S Special Count
- T Turning Movement Count
- Z Speed Count

GROUP

The factor group assigned to the location.

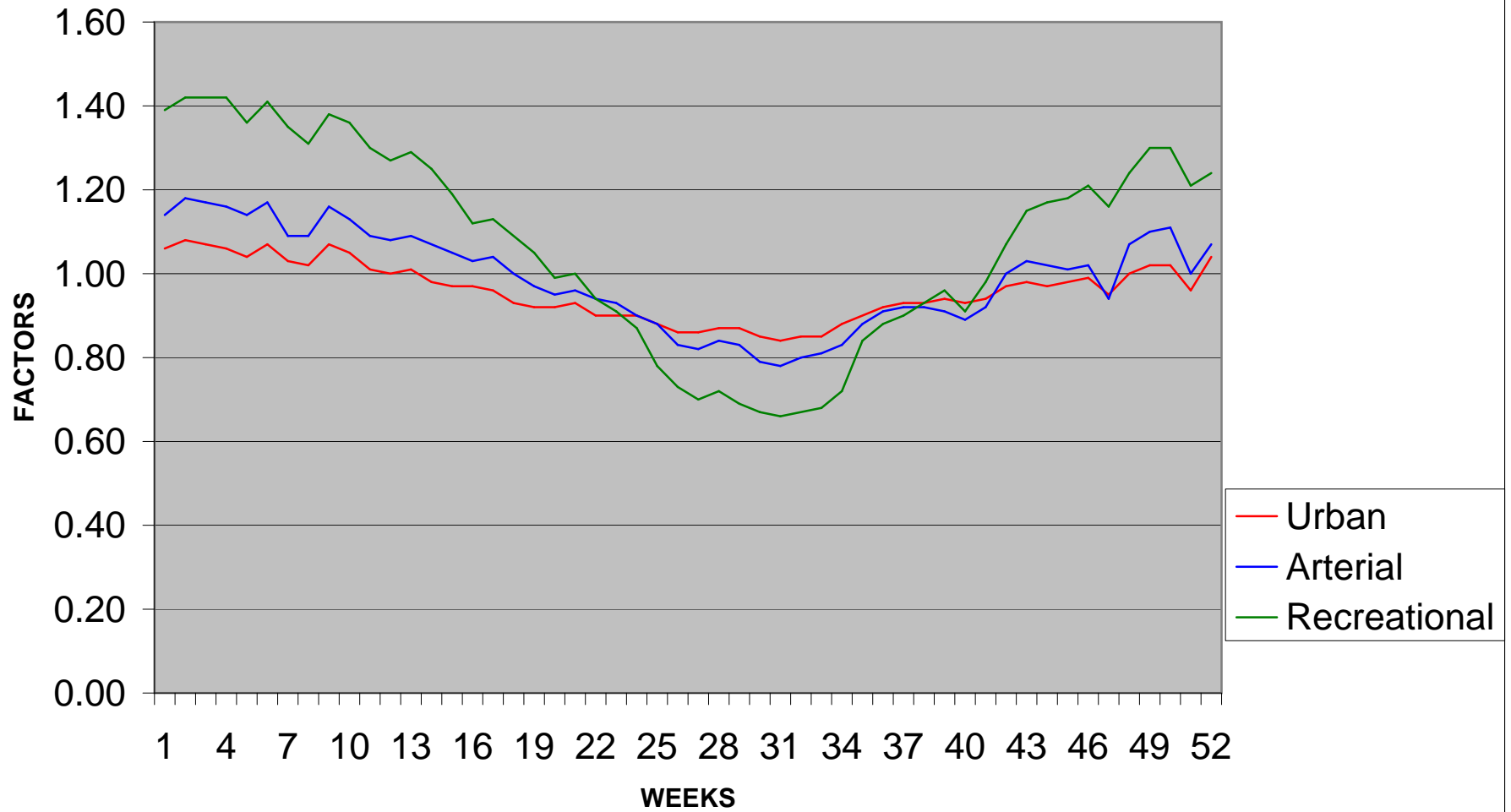
- I Urban Group II Arterial Group
- III Recreational Group ATR Permanent Recorder Controlled Group

AADT

Annual Average Daily Traffic

2006 WEEKLY GROUP FACTORS

AVERAGE: 2003, 2004, 2005



2006
WEEKLY GROUP MEAN FACTORS
AVERAGE: 2003, 2004, 2005

			Month	Urban	Arterial	recreation	Group	Group	Group	Year
Month	Start Date	Dates	Week #	Group I	Group II	Group III	I + II	II + III	I + III	Week #
Jan/Feb	(1)	2,3,4,5,6	1	1.06	1.14	1.39	1.10	1.27	1.23	1
	(8)	9,10,11,1	2	1.08	1.18	1.42	1.13	1.30	1.25	2
	(15)	16,17,18	3	1.07	1.17	1.42	1.12	1.30	1.25	3
	(22)	23,24,25	4	1.06	1.16	1.42	1.11	1.29	1.24	4
	(29)	30,31,1,2	5	1.04	1.14	1.36	1.09	1.25	1.20	5
Feb/Mar	(5)	6,7,8,9,1	1	1.07	1.17	1.41	1.12	1.29	1.24	6
	(12)	13,14,15	2	1.03	1.09	1.35	1.06	1.22	1.19	7
	(19)	20,21,22	3	1.02	1.09	1.31	1.06	1.20	1.17	8
	(26)	27,28,1,2	4	1.07	1.16	1.38	1.12	1.27	1.23	9
March	(5)	6,7,8,9,1	1	1.05	1.13	1.36	1.09	1.25	1.21	10
	(12)	13,14,15	2	1.01	1.09	1.30	1.05	1.20	1.16	11
	(19)	20,21,22	3	1.00	1.08	1.27	1.04	1.18	1.14	12
	(26)	27,28,29	4	1.01	1.09	1.29	1.05	1.19	1.15	13
April/May	(2)	3,4,5,6,7	1	0.98	1.07	1.25	1.03	1.16	1.12	14
	(9)	10,11,12	2	0.97	1.05	1.19	1.01	1.12	1.08	15
	(16)	17,18,19	3	0.97	1.03	1.12	1.00	1.08	1.05	16
	(23)	24,25,26	4	0.96	1.04	1.13	1.00	1.09	1.05	17
	(30)	1,2,3,4,5	5	0.93	1.00	1.09	0.97	1.05	1.01	18
May/Jun	(7)	8,9,10,11	1	0.92	0.97	1.05	0.95	1.01	0.99	19
	(14)	15,16,17	2	0.92	0.95	0.99	0.94	0.97	0.96	20
	(21)	22,23,24	3	0.93	0.96	1.00	0.95	0.98	0.97	21
	(28)	29,30,31	4	0.90	0.94	0.94	0.92	0.94	0.92	22
June	(4)	5,6,7,8,9	1	0.90	0.93	0.91	0.92	0.92	0.91	23

	(11)	12,13,14	2	0.90	0.90	0.87	0.90	0.89	0.89	24
	(18)	19,20,21	3	0.88	0.88	0.78	0.88	0.83	0.83	25
	(25)	26,27,28	4	0.86	0.83	0.73	0.85	0.78	0.80	26
Jul/Aug	(2)	3,4,5,6,7	1	0.86	0.82	0.70	0.84	0.76	0.78	27
	(9)	10,11,12	2	0.87	0.84	0.72	0.86	0.78	0.80	28
	(16)	17,18,19	3	0.87	0.83	0.69	0.85	0.76	0.78	29
	(23)	24,25,26	4	0.85	0.79	0.67	0.82	0.73	0.76	30
	(30)	31,1,2,3,	5	0.84	0.78	0.66	0.81	0.72	0.75	31
Aug/Sep	(6)	7,8,9,10,	1	0.85	0.80	0.67	0.83	0.74	0.76	32
	(13)	14,15,16	2	0.85	0.81	0.68	0.83	0.75	0.77	33
	(20)	21,22,23	3	0.88	0.83	0.72	0.86	0.78	0.80	34
	(27)	28,29,30	4	0.90	0.88	0.84	0.89	0.86	0.87	35
Septemb	(3)	4,5,6,7,8	1	0.92	0.91	0.88	0.92	0.90	0.90	36
	(10)	11,12,13	2	0.93	0.92	0.90	0.93	0.91	0.92	37
	(17)	18,19,20	3	0.93	0.92	0.93	0.93	0.93	0.93	38
	(24)	25,26,27	4	0.94	0.91	0.96	0.93	0.94	0.95	39
Oct/Nov	(1)	2,3,4,5,6	1	0.93	0.89	0.91	0.91	0.90	0.92	40
	(8)	9,10,11,1	2	0.94	0.92	0.98	0.93	0.95	0.96	41
	(15)	16,17,18	3	0.97	1.00	1.07	0.99	1.04	1.02	42
	(22)	23,24,25	4	0.98	1.03	1.15	1.01	1.09	1.07	43
	(29)	30,31,1,2	5	0.97	1.02	1.17	1.00	1.10	1.07	44
Nov/Dec	(5)	6,7,8,9,1	1	0.98	1.01	1.18	1.00	1.10	1.08	45
	(12)	13,14,15	2	0.99	1.02	1.21	1.01	1.12	1.10	46
	(19)	20,21,22	3	0.95	0.94	1.16	0.95	1.05	1.06	47
	(26)	27,28,29	4	1.00	1.07	1.24	1.04	1.16	1.12	48
Decembe	(3)	4,5,6,7,8	1	1.02	1.10	1.30	1.06	1.20	1.16	49
	(10)	11,12,13	2	1.02	1.11	1.30	1.07	1.21	1.16	50
	(17)	18,19,20	3	0.96	1.00	1.21	0.98	1.11	1.09	51
	(24)	25,26,27	4	1.04	1.07	1.24	1.06	1.16	1.14	52

2006
WEEKLY GROUP MEAN FACTORS
AVERAGE: 2003, 2004, 2005
AS PERCENT OF AADT

			Month	Urban	Arterial	recreation	Group	Group	Group	Year
Month	Start Date	Dates	Week #	Group I	Group II	Group III	I + II	II + III	I + III	Week #
Jan/Feb	(1)	2,3,4,5,6	1	94.34	87.72	71.94	90.91	78.74	81.30	1
	(8)	9,10,11,1	2	92.59	84.75	70.42	88.50	76.92	80.00	2
	(15)	16,17,18	3	93.46	85.47	70.42	89.29	76.92	80.00	3
	(22)	23,24,25	4	94.34	86.21	70.42	90.09	77.52	80.65	4
	(29)	30,31,1,2	5	96.15	87.72	73.53	91.74	80.00	83.33	5
Feb/Mar	(5)	6,7,8,9,1	1	93.46	85.47	70.92	89.29	77.52	80.65	6
	(12)	13,14,15	2	97.09	91.74	74.07	94.34	81.97	84.03	7
	(19)	20,21,22	3	98.04	91.74	76.34	94.34	83.33	85.47	8
	(26)	27,28,1,2	4	93.46	86.21	72.46	89.29	78.74	81.30	9
March	(5)	6,7,8,9,1	1	95.24	88.50	73.53	91.74	80.00	82.64	10
	(12)	13,14,15	2	99.01	91.74	76.92	95.24	83.33	86.21	11
	(19)	20,21,22	3	100.00	92.59	78.74	96.15	84.75	87.72	12
	(26)	27,28,29	4	99.01	91.74	77.52	95.24	84.03	86.96	13
April/May	(2)	3,4,5,6,7	1	102.04	93.46	80.00	97.09	86.21	89.29	14
	(9)	10,11,12	2	103.09	95.24	84.03	99.01	89.29	92.59	15
	(16)	17,18,19	3	103.09	97.09	89.29	100.00	92.59	95.24	16
	(23)	24,25,26	4	104.17	96.15	88.50	100.00	91.74	95.24	17
	(30)	1,2,3,4,5	5	107.53	100.00	91.74	103.09	95.24	99.01	18
May/June	(7)	8,9,10,11	1	108.70	103.09	95.24	105.26	99.01	101.01	19
	(14)	15,16,17	2	108.70	105.26	101.01	106.38	103.09	104.17	20
	(21)	22,23,24	3	107.53	104.17	100.00	105.26	102.04	103.09	21
	(28)	29,30,31	4	111.11	106.38	106.38	108.70	106.38	108.70	22
June	(4)	5,6,7,8,9	1	111.11	107.53	109.89	108.70	108.70	109.89	23

	(11)	12,13,14	2	111.11	111.11	114.94	111.11	112.36	112.36	24
	(18)	19,20,21	3	113.64	113.64	128.21	113.64	120.48	120.48	25
	(25)	26,27,28	4	116.28	120.48	136.99	117.65	128.21	125.00	26
Jul/Aug	(2)	3,4,5,6,7	1	116.28	121.95	142.86	119.05	131.58	128.21	27
	(9)	10,11,12	2	114.94	119.05	138.89	116.28	128.21	125.00	28
	(16)	17,18,19	3	114.94	120.48	144.93	117.65	131.58	128.21	29
	(23)	24,25,26	4	117.65	126.58	149.25	121.95	136.99	131.58	30
	(30)	31,1,2,3,	5	119.05	128.21	151.52	123.46	138.89	133.33	31
Aug/Sep	(6)	7,8,9,10,	1	117.65	125.00	149.25	120.48	135.14	131.58	32
	(13)	14,15,16	2	117.65	123.46	147.06	120.48	133.33	129.87	33
	(20)	21,22,23	3	113.64	120.48	138.89	116.28	128.21	125.00	34
	(27)	28,29,30	4	111.11	113.64	119.05	112.36	116.28	114.94	35
Septemb	(3)	4,5,6,7,8	1	108.70	109.89	113.64	108.70	111.11	111.11	36
	(10)	11,12,13	2	107.53	108.70	111.11	107.53	109.89	108.70	37
	(17)	18,19,20	3	107.53	108.70	107.53	107.53	107.53	107.53	38
	(24)	25,26,27	4	106.38	109.89	104.17	107.53	106.38	105.26	39
Oct/Nov	(1)	2,3,4,5,6	1	107.53	112.36	109.89	109.89	111.11	108.70	40
	(8)	9,10,11,1	2	106.38	108.70	102.04	107.53	105.26	104.17	41
	(15)	16,17,18	3	103.09	100.00	93.46	101.01	96.15	98.04	42
	(22)	23,24,25	4	102.04	97.09	86.96	99.01	91.74	93.46	43
	(29)	30,31,1,2	5	103.09	98.04	85.47	100.00	90.91	93.46	44
Nov/Dec	(5)	6,7,8,9,1	1	102.04	99.01	84.75	100.00	90.91	92.59	45
	(12)	13,14,15	2	101.01	98.04	82.64	99.01	89.29	90.91	46
	(19)	20,21,22	3	105.26	106.38	86.21	105.26	95.24	94.34	47
	(26)	27,28,29	4	100.00	93.46	80.65	96.15	86.21	89.29	48
Decembe	(3)	4,5,6,7,8	1	98.04	90.91	76.92	94.34	83.33	86.21	49
	(10)	11,12,13	2	98.04	90.09	76.92	93.46	82.64	86.21	50
	(17)	18,19,20	3	104.17	100.00	82.64	102.04	90.09	91.74	51
	(24)	25,26,27	4	96.15	93.46	80.65	94.34	86.21	87.72	52

County **2006 Maine Transportation Count Book**

Washington		STATION	ROAD	LOCATION	TYPE	GROUP	AADT02	AADT03	AADT04	AADT05	AADT06
TOWN											
29	ADDISON	33901	00601	IR 601 (WATER ST) N/O IR 969 (WESCOGUS)	C	I+II	.	.	1580	.	.
29	ADDISON	49305	00601	IR 601(MOOSE NECK) S/O IR609(CAPE SPLIT)	C	II	.	.	390	.	.
29	ADDISON	59605	00601	IR 601 (MOOSE NECK RD) S/O IR 602(BASIN)	C	II	.	.	620	.	.
29	ADDISON	49307	00609	IR 609(CAPE SPLIT) W/O IR601(MOOSE NECK)	C	II	.	.	340	.	.
29	ADDISON	34006	00969	IR 969 (WESCOGUS RD) SW/O SR 187	C	II	.	.	760	.	.
29	ADDISON	34003	0187X	SR 187 (INDIAN RV) E/O IR 969 (WESCOGUS)	C	II	.	.	1820	.	.
29	ADDISON	47104	0187X	SR 187(INDIAN RV RD) SE/O IR607(CROWLEY)	C	II	.	.	2010	.	.
29	ALEXANDER	38207	0009X	SR 9 W/O IR 473 (COOPER RD)	C	ATR30702	.	.	3050	.	.
29	ALEXANDER	38302	0009X	SR 9 NE/O IR 309 (S PRINCETON RD)	C	ATR30702	.	.	3210	.	.
29	ALEXANDER	38306	0009X	SR 9 SW/O IR 309 (S PRINCETON RD)	C	ATR30702	.	.	3730	.	.
29	ALEXANDER	67906	0009X	SR 9 SW/O IR 483 (FLAT RD)	C	ATR30702	.	.	3750	.	.
29	ALEXANDER	84200	0009X	SR 9 @ CRAWFORD TL	C	ATR30702	.	.	3240	.	.
29	ALEXANDER	38308	00309	IR 309 (S PRINCETON RD) NW/O SR 9	C	I	.	.	660	.	.
29	ALEXANDER	38205	00473	IR 473 (COOPER RD) S/O SR 9	C	I	.	.	750	.	.
29	ALEXANDER	44304	00473	IR 473 (COOPER RD) SE/O IR 320	C	I	.	.	660	.	.
29	ALEXANDER	81504	01888	IR 1888 SE/O SR 9	C	I+II	.	.	400	.	.
29	BAILEYVILLE	00108	0001X	US 1 (HOULTON RD) NW/O ACCESS RD	C	I	.	.	3460	.	.
29	BAILEYVILLE	00204	0001X	US 1 (HOULTON RD) SE/O MAIN ST	C	I	.	.	6370	.	.
29	BAILEYVILLE	00207	0001X	US 1 (HOULTON RD) W/O MAIN ST	C	I	.	.	5160	.	.
29	BAILEYVILLE	02108	0001X	US 1 (HOULTON RD) NW/O THIRD AVE	C	I	.	.	4510	.	.
29	BAILEYVILLE	40504	0001X	US 1 SE/O SR 9	C	I+II	.	.	8130	.	.
29	BAILEYVILLE	40508	0001X	US 1 NW/O SR 9	C	I	.	.	6030	.	.
29	BAILEYVILLE	65204	0001X	US 1 SE/O IR 1262 (GRAND FALLS RD)	C	I	.	.	3150	.	.
29	BAILEYVILLE	65208	0001X	US 1 NW/O IR 1262 (GRAND FALLS RD)	C	I	.	.	3020	.	.
29	BAILEYVILLE	40506	0009X	SR 9 SW/O US 1	C	ATR30702	.	.	3820	.	.
29	BAILEYVILLE	01800	00316	S PRINCETON RD @ CUL	C	I	.	.	680	.	.
29	BAILEYVILLE	02007	00316	S PRINCETON RD W/O US 1 (HOULTON RD)	C	I	.	.	790	.	.
29	BAILEYVILLE	00208	00893	MAIN ST NW/O US 1 (HOULTON RD)	C	I	.	.	2200	.	.
29	BAILEYVILLE	65201	01262	IR 1262 (GRAND FALLS RD) N/O US 1	C	I+II	.	.	150	.	.
29	BARING	40103	0001X	US 1/SR 9 E/O SR 191	C	I+II	.	.	8110	.	.
29	BARING	40107	0001X	US 1/SR 9 W/O SR 191	C	I+II	.	.	7800	.	.
29	BARING	43806	0001X	US 1/SR 9 SW/O IR 1977 @ CALAIS TL	C	I+II	.	.	7410	.	.
29	BARING	44102	00307	IR 307 NE/O IR 1225 @ BR# 1158	C	II	.	.	1140	.	.
29	BARING	40105	0191X	SR 191 S/O IR 1589 (DOTENS HOUES)	C	ATR80801	.	.	1470	.	.

2006 Maine Transportation Count Book

County

Washington

TOWN	STATION	ROAD	LOCATION	TYPE	GROUP	AADT02	AADT03	AADT04	AADT05	AADT06
29 BARING	44201	0191X	SR 191 N/O IR 1980	C	ATR80801	.	.	1450	.	.
29 BARING	44205	0191X	SR 191 S/O IR 1980	C	ATR80801	.	.	1600	.	.
29 BEALS	00607	03001	IR 3001 (MAIN ST) W/O IR 3002	C	II	.	.	550	.	.
29 BEALS	00103	03002	IR 3002 E/O IR 1131	C	II	.	.	1760	.	.
29 BEALS	00107	03002	IR 3002 W/O IR 1131	C	II	.	.	490	.	.
29 BEALS	49202	03002	IR 3002 (ALLEY'S BAY RD) NE/O IR 3008	C	II	.	.	870	.	.
29 BEALS	00506	03005	IR 3005(MILL POND RD) SW/O IR 3001(MAIN)	C	II	.	.	370	.	.
29 BEALS	49205	03008	IR 3008 (BLACK DUCK COVE) S/O IR 3002	C	II	.	.	610	.	.
29 BROOKTON TWP	30304	0001X	US 1 SE/O IR 807	C	I	.	.	1020	.	.
29 BROOKTON TWP	30308	0001X	US 1 NW/O IR 807	C	I	.	.	1100	.	.
29 BROOKTON TWP	30307	00806	IR 806 W/O US 1	C	II	.	.	50	.	.
29 BROOKTON TWP	30302	00807	IR 807 NE/O US 1	C	I	.	.	400	.	.
29 CALAIS	00204	0001X	US 1 (MAIN ST) SE/O STEAMBOAT ST	C	I	.	.	5160	.	.
29 CALAIS	00404	0001X	US 1 (MAIN ST) SE/O SOUTH ST	C	I	.	.	5630	.	.
29 CALAIS	00408	0001X	US 1 (MAIN ST) NW/O SOUTH ST	C	I	.	.	4880	.	.
29 CALAIS	01105	0001X	US 1/SR 9 (BARING ST) S/O NORTH ST	C	I+II	.	.	10000	.	.
29 CALAIS	01205	0001X	US 1/SR 9 (BARING) S/O INDUSTRIAL PK RD	C	I+II	.	.	9200	.	.
29 CALAIS	01303	0001X	US 1/SR 9 (NORTH ST) E/O BOARDMAN ST	C	I+II	.	.	11330	.	.
29 CALAIS	01402	0001X	US 1/SR 9 (NORTH ST) NE/O SOUTH ST	C	I+II	.	.	7280	.	.
29 CALAIS	01502	0001X	US 1/SR 9 (NORTH ST) NE/O UNION ST	C	I+II	.	.	8260	.	.
29 CALAIS	01506	0001X	US 1/SR 9 (NORTH ST) SW/O UNION ST	C	I+II	.	.	8200	.	.
29 CALAIS	01602	0001X	US 1/SR 9 (NORTH ST) NE/O GARFIELD ST	C	I+II	.	.	9020	.	.
29 CALAIS	01802	0001X	US 1/SR 9 (NORTH ST) NE/O CHANDLER ST	C	I+II	.	.	9380	.	.
29 CALAIS	01902	0001X	US 1/SR 9 (NORTH ST) NE/O LINCOLN ST	C	I+II	.	.	8900	.	.
29 CALAIS	02106	0001X	US 1/SR 9 (NORTH ST) SW/O WASHINGTON ST	C	I+II	.	.	8630	.	.
29 CALAIS	02404	0001X	US 1 (MAIN ST) SE/O LAFAYETTE ST	C	I	.	.	5190	.	.
29 CALAIS	02703	0001X	US 1 (MAIN ST) E/O NORTH ST	C	I	.	.	5190	.	.
29 CALAIS	02706	0001X	US 1/SR 9 (NORTH ST) SW/O MAIN ST	C	I+II	.	.	6860	.	.
29 CALAIS	02804	0001X	US 1 (MAIN ST) SE/O CHURCH ST	C	I	.	.	5330	.	.
29 CALAIS	03704	0001X	US 1 (MAIN ST) SE/O CALAIS AVE	C	I	.	.	5260	.	.
29 CALAIS	04606	0001X	US 1/SR 9 (NORTH ST) SW/O CHAPEL ST	C	I+II	.	.	11290	.	.
29 CALAIS	43603	0001X	US 1 E/O IR 303 (CARSON RD)	C	I	.	.	3350	.	.
29 CALAIS	64401	0001X	US 1/SR 9 N/O IR 307 @ BR# 2509	C	I+II	.	.	9140	.	.
29 CALAIS	64406	0001X	US 1/SR 9 SW/O IR 307	C	I+II	.	.	7930	.	.

2006 Maine Transportation Count Book

County

Washington

TOWN	STATION	ROAD	LOCATION	TYPE	GROUP	AADT02	AADT03	AADT04	AADT05	AADT06
CALAIS	71504	0001X	US 1 SE/O IR 306	C	I	.	.	2670	.	.
CALAIS	02304	0009X	SR 9 (MAIN ST) SE/O RIVER ST	C	I+II	.	.	5350	.	.
CALAIS	02605	0009X	SR 9 (MAIN ST) S/O UNION ST	C	I+II	.	.	4380	.	.
CALAIS	02608	0009X	SR 9 (MAIN ST) NW/O UNION ST	C	I+II	.	.	5210	.	.
CALAIS	02707	0009X	SR 9 (MAIN ST) W/O NORTH ST	C	I+II	.	.	4890	.	.
CALAIS	44006	00307	IR 307 SW/O IR 1222 (HEADQUARTER RD)	C	II	.	.	1100	.	.
CALAIS	64404	00307	IR 307 SE/O US 1/SR 9	C	II	.	.	1220	.	.
CALAIS	00402	00987	SOUTH ST NE/O US 1 (MAIN ST)	C	I	.	.	140	.	.
CALAIS	00406	00987	SOUTH ST SW/O US 1 (MAIN ST)	C	I	.	.	4670	.	.
CALAIS	00506	00987	SOUTH ST SW/O WASHINGTON ST	C	I	.	.	5570	.	.
CALAIS	00706	00987	SOUTH ST SW/O LINCOLN ST	C	I	.	.	6450	.	.
CALAIS	00902	00987	SOUTH ST NE/O GARFIELD ST	C	I	.	.	6330	.	.
CALAIS	00906	00987	SOUTH ST SW/O GARFIELD ST	C	I	.	.	7100	.	.
CALAIS	01403	00987	SOUTH ST E/O US 1/SR 9 (NORTH ST)	C	I	.	.	4930	.	.
CALAIS	44008	01222	IR 1222 (HEADQUARTER RD) NW/O IR 307	C	II	.	.	150	.	.
CALAIS	04204	01273	SCHOOL ST SE/O SOUTH ST	C	I	.	.	150	.	.
CALAIS	04304	01275	HARRISON ST SE/O US 1/SR 9 (NORTH ST)	C	I	.	.	440	.	.
CALAIS	04406	01275	CALAIS AVE #2 SW/O US 1 (MAIN ST)	C	I	.	.	160	.	.
CALAIS	00708	01277	LINCOLN ST NW/O SOUTH ST	C	I	.	.	1130	.	.
CALAIS	02904	01277	LINCOLN ST SE/O CALAIS AVE	C	I	.	.	1340	.	.
CALAIS	03304	01277	LINCOLN ST SE/O LAFAYETTE ST	C	I	.	.	1260	.	.
CALAIS	03308	01277	LINCOLN ST NW/O LAFAYETTE ST	C	I	.	.	1280	.	.
CALAIS	00304	01278	PALMER ST SE/O FRANKLIN ST	C	I	.	.	2250	.	.
CALAIS	00308	01278	PALMER ST NW/O FRANKLIN ST	C	I	.	.	2270	.	.
CALAIS	00508	01279	WASHINGTON ST NW/O SOUTH ST	C	I	.	.	1930	.	.
CALAIS	02104	01279	WASHINGTON ST SE/O US 1/SR 9 (NORTH ST)	C	I	.	.	2640	.	.
CALAIS	02504	01279	WASHINGTON ST SE/O GERMAIN ST	C	I	.	.	2200	.	.
CALAIS	02508	01279	WASHINGTON ST NW/O GERMAIN ST	C	I	.	.	2310	.	.
CALAIS	03204	01279	WASHINGTON ST SE/O DOWNES ST	C	I	.	.	2070	.	.
CALAIS	03208	01279	WASHINGTON ST NW/O DOWNES ST	C	I	.	.	2130	.	.
CALAIS	04604	01280	CHAPEL ST SE/O US 1/SR 9 (NORTH ST)	C	I	.	.	170	.	.
CALAIS	00908	01281	GARFIELD ST NW/O SOUTH ST	C	I	.	.	2180	.	.
CALAIS	01604	01281	GARFIELD ST SE/O US 1/SR 9 (NORTH ST)	C	I	.	.	2500	.	.
CALAIS	01608	01281	GARFIELD ST NW/O US 1/SR 9 (NORTH ST)	C	I	.	.	310	.	.

2006 Maine Transportation Count Book

County

Washington

TOWN	STATION	ROAD	LOCATION	TYPE	GROUP	AADT02	AADT03	AADT04	AADT05	AADT06
CALAIS	03404	01281	GARFIELD ST SE/O CALAIS AVE	C	I	.	.	2420	.	.
CALAIS	00302	01282	FRANKLIN ST NE/O PALMER ST	C	I	.	.	570	.	.
CALAIS	04104	01430	KING ST SE/O US 1/SR 9 (NORTH ST)	C	I	.	.	120	.	.
CALAIS	03202	01441	DOWNES ST NE/O WASHINGTON ST	C	I	.	.	260	.	.
CALAIS	03206	01441	DOWNES ST SW/O WASHINGTON ST	C	I	.	.	180	.	.
CALAIS	02406	01443	LAFAYETTE ST SW/O US 1 (MAIN ST)	C	I	.	.	180	.	.
CALAIS	03302	01443	LAFAYETTE ST NE/O LINCOLN ST	C	I	.	.	200	.	.
CALAIS	03502	01443	LAFAYETTE ST NE/O GARFIELD ST	C	I	.	.	250	.	.
CALAIS	02502	01444	GERMAIN ST NE/O WASHINGTON ST	C	I	.	.	230	.	.
CALAIS	02506	01444	GERMAIN ST SW/O WASHINGTON ST	C	I	.	.	240	.	.
CALAIS	03706	01446	CALAIS AVE SW/O US 1 (MAIN ST)	C	I	.	.	150	.	.
CALAIS	01508	01454	UNION ST NW/O US 1/SR 9 (NORTH ST)	C	I	.	.	1150	.	.
CALAIS	02603	01454	UNION ST E/O SR 9 (MAIN ST) (W JCT)	C	I	.	.	1550	.	.
CALAIS	02607	01454	UNION ST W/O SR 9 (MAIN ST) (W JCT)	C	I	.	.	960	.	.
CALAIS	02808	01454	UNION ST (OW)NW/O US 1 (MAIN ST) (E JCT)	C	I	.	.	510	.	.
CALAIS	03101	01454	UNION ST N/O CHANDLER ST	C	I	.	.	1080	.	.
CALAIS	04506	01454	UNION ST SW/O BUICK ST (ENT TO MARDENS)	C	I	.	.	1100	.	.
CALAIS	01708	01456	CHANDLER ST NW/O MONROE ST	C	I	.	.	210	.	.
CALAIS	01808	01456	CHANDLER ST NW/O US 1/SR 9 (NORTH ST)	C	I	.	.	1000	.	.
CALAIS	01702	01457	MONROE ST NE/O CHANDLER ST	C	I	.	.	630	.	.
CALAIS	03806	01457	MONROE ST (OW) SW/O SR 9 (MAIN ST)	C	I	.	.	250	.	.
CALAIS	02008	01461	HIGH ST NW/O US 1/SR 9 (NORTH ST)	C	I	.	.	570	.	.
CALAIS	02902	01470	CALAIS AVE NE/O LINCOLN ST	C	I	.	.	540	.	.
CALAIS	03402	01470	CALAIS AVE NE/O GARFIELD ST	C	I	.	.	770	.	.
CALAIS	02806	01471	CHURCH ST SW/O US 1 (MAIN ST)	C	I	.	.	690	.	.
CALAIS	02702	01473	NORTH ST NE/O US 1 (MAIN ST)	C	I	.	.	2230	.	.
CALAIS	03908	01476	ACADEMY ST NW/O CHURCH ST	C	I	.	.	220	.	.
CALAIS	01304	01482	BOARDMAN ST SE/O US 1/SR 9 (NORTH ST)	C	I	.	.	590	.	.
CALAIS	04002	01482	BOARDMAN ST NE/O US 1/SR 9 (BARING ST)	C	I	.	.	450	.	.
CALAIS	00800	01483	NORTH ST @ US CUSTOMS	C	I+II	.	.	3060	.	.
CALAIS	01107	01483	NORTH ST W/O US 1/SR 9 (BARING ST)	C	I+II	.	.	3280	.	.
CALAIS	02306	01501	RIVER ST SW/O SR 9 (MAIN ST)	C	I	.	.	1040	.	.
CALAIS	01207	01615	INDUSTRIAL PK RD W/O US 1/SR 9 (BARING)	C	I	.	.	210	.	.
CENTERVILLE	48001	00552	IR 552 N/O IR 561	C	I	.	.	50	.	.

County **2006 Maine Transportation Count Book**

Washington		STATION	ROAD	LOCATION	TYPE	GROUP	AADT02	AADT03	AADT04	AADT05	AADT06
TOWN											
29	CENTERVILLE	48006	00552	IR 552 SW/O IR 561 @ BR# 3622	C	I	.	.	110	.	.
29	CENTERVILLE	48104	00552	IR 552 SE/O IR 554 @ JONESBORO TL	C	I	.	.	100	.	.
29	CENTERVILLE	48002	00561	IR 561 NE/O IR 552 @ BR# 1170	C	I	.	.	70	.	.
29	CHARLOTTE	44406	00307	IR 307(CHARLOTTE RD) SW/O IR 480@BR#3787	C	II	.	.	1000	.	.
29	CHARLOTTE	44403	00480	IR 480(STATION RD) E/O IR 307 @ BR# 3332	C	II	.	.	320	.	.
29	CHERRYFIELD	51000	0001X	US 1 @ MILBRIDGE TL (S TL)	C	II	.	.	1760	.	.
29	CHERRYFIELD	82703	0001X	US 1 E/O SR 193	C	II	.	.	4170	.	.
29	CHERRYFIELD	82707	0001X	US 1 W/O SR 193	C	II	.	.	4160	.	.
29	CHERRYFIELD	82806	0001X	US 1 SW/O SR 182	C	II	.	.	2390	.	.
29	CHERRYFIELD	83600	0001X	US 1@ MILBRIDGE TL (N TL)	C	II	.	.	3220	.	.
29	CHERRYFIELD	33002	00610	IR 610 NE/O SR 193	C	I	.	.	930	.	.
29	CHERRYFIELD	84900	00610	IR 610 (RIDGE RD) @ COLUMBIA TL @BR#1182	C	I	.	.	270	.	.
29	CHERRYFIELD	82705	00637	IR 637 S/O US 1	C	II	.	.	380	.	.
29	CHERRYFIELD	82903	00643	IR 643 (NORTH ST) E/O SR 193	C	I+II	.	.	550	.	.
29	CHERRYFIELD	82907	00643	IR 643 (NORTH ST) W/O SR 193 @ BR# 5155	C	II	.	.	730	.	.
29	CHERRYFIELD	84401	01091	IR 1091 (RIVER RD) N/O US 1	C	I	.	.	270	.	.
29	CHERRYFIELD	32900	0182X	SR 182 @ T10 SD TL	C	ATR57501	.	.	1910	.	.
29	CHERRYFIELD	82808	0182X	SR 182 NW/O US 1	C	ATR57501	.	.	1980	.	.
29	CHERRYFIELD	84503	0182X	SR 182 E/O IR 643 (BIG ROCK LN)	C	ATR57501	.	.	2050	.	.
29	CHERRYFIELD	84507	0182X	SR 182 W/O IR 643 (BIG ROCK LN)	C	ATR57501	.	.	2450	.	.
29	CHERRYFIELD	33008	0193X	SR 193 NW/O IR 610	C	ATR30702	.	.	1240	.	.
29	CHERRYFIELD	61300	0193X	SR 193 @ DEBLOIS TL	C	ATR30702	.	.	990	.	.
29	CHERRYFIELD	82701	0193X	SR 193 N/O US 1	C	II+III	.	.	2450	.	.
29	CHERRYFIELD	82901	0193X	SR 193 N/O IR 643 (NORTH ST)	C	II+III	.	.	2450	.	.
29	CODYVILLE PLT	30703	0006X	SR 6 E/O IR 816	C	II	.	.	510	.	.
29	CODYVILLE PLT	81100	0006X	SR 6 @ LAMBERT LAKE TWP TL	C	II	.	.	520	.	.
29	COLUMBIA	33503	0001X	US 1 E/O IR 597 (SACO FALLS RD)	C	II	.	.	5760	.	.
29	COLUMBIA	59202	0001X	US 1 NE/O IR 621 @ HARRINGTON TL	C	II	.	.	6550	.	.
29	COLUMBIA	48407	00594	IR 594 W/O IR 595 @ COLUMBIA FALLS TL	C	I	.	.	110	.	.
29	COLUMBIA	33505	00597	IR 597 (SACO FALLS RD) S/O US 1	C	I+II	.	.	1380	.	.
29	COLUMBIA	48504	00597	IR 597 (MEETINGHOUSE) SE/O IR595@BR#3322	C	I	.	.	440	.	.
29	COLUMBIA	48607	00597	IR 597 (SACO RD) W/O IR 594 @ BR# 3848	C	I	.	.	130	.	.
29	COLUMBIA	48706	00597	IR 597 SW/O IR 681 @ BR# 3324	C	I	.	.	150	.	.
29	COLUMBIA FALLS	62303	0001X	US 1 E/O SR 187	C	II	.	.	3650	.	.

2006 Maine Transportation Count Book

Washington

TOWN	STATION	ROAD	LOCATION	TYPE	GROUP	AADT02	AADT03	AADT04	AADT05	AADT06
29 COLUMBIA FALLS	82003	0001X	US 1 E/O IR 1571 (E JCT)	C	II	.	.	4600	.	.
29 COLUMBIA FALLS	82103	0001X	US 1 E/O IR 554 (TIBBETTS TOWN RD)	C	II	.	.	4270	.	.
29 COLUMBIA FALLS	82107	0001X	US 1 W/O IR 554 (TIBBETTS TOWN RD)	C	II	.	.	4660	.	.
29 COLUMBIA FALLS	82202	0001X	US 1 NE/O IR 1571 (W JCT)	C	II	.	.	4390	.	.
29 COLUMBIA FALLS	49402	00554	IR 554 NE/O IR 595	C	I	.	.	750	.	.
29 COLUMBIA FALLS	82101	00554	IR 554 (TIBBETTS TOWN RD) N/O US 1	C	I	.	.	1290	.	.
29 COLUMBIA FALLS	48401	00595	IR 595 (INGERSOLL RD) N/O IR 594	C	I	.	.	20	.	.
29 COLUMBIA FALLS	49401	00595	IR 595 N/O IR 554	C	I	.	.	820	.	.
29 COLUMBIA FALLS	81905	00599	IR 599 (POINT ST) S/O IR 1571 (MAIN ST)	C	I+II	.	.	470	.	.
29 COLUMBIA FALLS	48307	00606	IR 606 (CROSS RD) W/O IR 595 @ BR# 3849	C	I	.	.	160	.	.
29 COLUMBIA FALLS	81902	01571	IR 1571 (MAIN ST) NE/O IR 599 (POINT ST)	C	I+II	.	.	710	.	.
29 COLUMBIA FALLS	82006	01571	IR 1571 SW/O US 1 (E JCT)	C	I+II	.	.	420	.	.
29 COLUMBIA FALLS	82203	01571	IR 1571 E/O US 1 (W JCT)	C	I+II	.	.	490	.	.
29 COLUMBIA FALLS	62305	0187X	SR 187 S/O US 1	C	II	.	.	1910	.	.
29 COOPER	38004	00336	IR 336 SE/O SR 191	C	II	.	.	210	.	.
29 COOPER	38107	00473	IR 473 W/O SR 191 @ BR# 3755	C	I	.	.	450	.	.
29 COOPER	38002	0191X	SR 191 NE/O IR 336 (E RIDGE RD)	C	ATR80801	.	.	1050	.	.
29 COOPER	38007	0191X	SR 191 W/O IR 336	C	ATR80801	.	.	990	.	.
29 COOPER	38102	0191X	SR 191 NE/O IR 473 @ BR# 3855	C	ATR80801	.	.	1070	.	.
29 COOPER	81700	0191X	SR 191 @ NUMBER 14 PLANTATION	C	ATR80801	.	.	1020	.	.
29 CRAWFORD	32206	0009X	SR 9 SW/O IR 976 (LOVE LAKE RD)	C	ATR30702	.	.	3520	.	.
29 CRAWFORD	32208	0009X	SR 9 NW/O IR 976 (LOVE LAKE RD)	C	ATR30702	.	.	3240	.	.
29 CRAWFORD	32205	00315	IR 315 (TWP NINETEEN RD) S/O SR 9	C	II	.	.	200	.	.
29 CRAWFORD	32202	00976	IR 976 (LOVE LAKE RD) NE/O SR 9	C	III	.	.	110	.	.
29 CRAWFORD	40004	01888	IR 1888 SE/O SR 9 (W JCT)	C	II	.	.	80	.	.
29 CUTLER	36107	00374	IR 374 (RIDGE RD) W/O SR 191 (CUTLER RD)	C	I	.	.	310	.	.
29 CUTLER	45604	00392	IR 392 (DESTINY BAY RD) SE/O SR 191	C	II	.	.	110	.	.
29 CUTLER	85900	00396	IR 396 (COVE RD) @ BR#3190 @ SCHOONER BK	C	II	.	.	50	.	.
29 CUTLER	38906	00447	IR 447(ACKLEY RD) SW/O SR 191(CUTLER RD)	C	II	.	.	30	.	.
29 CUTLER	71406	00451	IR 451(LITTLE MACHIAS RV RD) SW/O SR 191	C	II	.	.	220	.	.
29 CUTLER	36103	0191X	SR 191 E/O IR 374 (RIDGE RD)	C	II	.	.	670	.	.
29 CUTLER	36108	0191X	SR 191 (CUTLER RD) NW/O IR 374 (RIDGE)	C	I+II	.	.	790	.	.
29 CUTLER	36201	0191X	SR 191 N/O IR 396 (COVE RD)	C	II	.	.	530	.	.
29 CUTLER	38901	0191X	SR 191 (CUTLER RD) N/O IR 447(ACKLEY RD)	C	I+II	.	.	830	.	.

County **2006 Maine Transportation Count Book**

Washington		STATION	ROAD	LOCATION	TYPE	GROUP	AADT02	AADT03	AADT04	AADT05	AADT06
TOWN											
29	CUTLER	45500	0191X	SR 191 @ TRESCOTT TWP TL	C	II	.	.	220	.	.
29	CUTLER	45602	0191X	SR 191 NE/O IR 392 (DESTINY BAY RD)	C	II	.	.	690	.	.
29	CUTLER	45606	0191X	SR 191 SW/O IR 392 (DESTINY BAY RD)	C	II	.	.	680	.	.
29	DANFORTH	30401	0001X	US 1 N/O SR 169	C	I	.	.	2420	.	.
29	DANFORTH	30403	0001X	US 1 E/O SR 169	C	I	.	.	1730	.	.
29	DANFORTH	83700	0001X	US 1 @ WESTON TL	C	I	.	.	1410	.	.
29	DANFORTH	32804	00801	IR 801 (HORSE BACK RD) SE/O SR 169	C	I	.	.	270	.	.
29	DANFORTH	83800	00807	IR 807 @ FOREST CITY TWP TL	C	II	.	.	180	.	.
29	DANFORTH	30405	00851	IR 851 (DEPOT RD) S/O SR 169	C	I	.	.	970	.	.
29	DANFORTH	33201	00852	IR 852 (BANCROFT RD) N/O SR 169	C	I	.	.	570	.	.
29	DANFORTH	33205	00852	IR 852 (CENTRAL ST) S/O SR 169	C	I	.	.	1090	.	.
29	DANFORTH	33101	00853	IR 853 (MAPLE ST) N/O SR 169	C	I	.	.	560	.	.
29	DANFORTH	30106	0169X	SR 169 SW/O IR 854	C	II	.	.	480	.	.
29	DANFORTH	30407	0169X	SR 169 W/O US 1	C	II	.	.	1810	.	.
29	DANFORTH	33106	0169X	SR 169 SW/O IR 853 (MAPLE ST)	C	II	.	.	1100	.	.
29	DANFORTH	33207	0169X	SR 169 W/O IR 852(BANCROFT RD) @BR# 5461	C	II	.	.	1670	.	.
29	DEBLOIS	66103	01121	IR 1121(HATCHERY RD) E/O SR 193 @BR#1153	C	II+III	.	.	180	.	.
29	DEBLOIS	66104	0193X	SR 193 (DEBLOIS RD) SE/O IR 1121	C	ATR30702	.	.	740	.	.
29	DEBLOIS	81308	0193X	SR 193 NW/O IR 604	C	ATR30702	.	.	830	.	.
29	DENNYSVILLE	58501	0001X	US 1 N/O IR 311	C	I	.	.	2540	.	.
29	DENNYSVILLE	58505	0001X	US 1 S/O IR 311	C	I	.	.	2570	.	.
29	DENNYSVILLE	70705	0001X	US 1 S/O IR 904	C	ATR80803	.	.	1920	.	.
29	DENNYSVILLE	58508	00311	IR 311 (SMITH RIDGE RD) NW/O US 1	C	I	.	.	120	.	.
29	DENNYSVILLE	41304	00351	IR 351 (OX COVE) SE/O US 1 @ PEMBROKE TL	C	I	.	.	90	.	.
29	DENNYSVILLE	41104	00546	IR 546 (LANE RD) SE/O SR 86	C	I	.	.	180	.	.
29	DENNYSVILLE	41106	0086X	SR 86 SW/O IR 546 (LANE RD)	C	I	.	.	520	.	.
29	DENNYSVILLE	70706	0086X	SR 86 SW/O IR 907	C	I	.	.	790	.	.
29	DENNYSVILLE	41007	04009	IR 4009 W/O IR 345 @ BR# 2881 @ TL	C	I	.	.	310	.	.
29	DENNYSVILLE	41205	04009	IR 4009 (WYES RD) S/O SR 86	C	I	.	.	220	.	.
29	EAST MACHIAS	80803	0001X	US 1/SR 191 E/O SR 191 (W JCT)	A		3220	3190	3200	3140	3130
29	EAST MACHIAS	47403	0001X	US 1 E/O SR 191 (E JCT)	C	ATR80803	.	.	3060	.	.
29	EAST MACHIAS	72501	0001X	US 1 N/O IR 1188 (E JCT)	C	I	.	.	7210	.	.
29	EAST MACHIAS	80805	0001X	US 1 S/O SR 191 (W JCT)	C	I	.	.	5880	.	.
29	EAST MACHIAS	85406	0001X	US 1 SW/O IR 445	C	I	.	.	7360	.	.

2006 Maine Transportation Count Book

Washington

	TOWN	STATION	ROAD	LOCATION	TYPE	GROUP	AADT02	AADT03	AADT04	AADT05	AADT06
29	EAST MACHIAS	85700	0001X	US 1 @ WHITING TL	C	ATR80803	.	.	2430	.	.
29	EAST MACHIAS	46002	00340	IR 340 (CHURCH RD) NE/O SR 191	C	I	.	.	220	.	.
29	EAST MACHIAS	46102	00340	IR 340(CHURCH RD) NE/O IR 1207 @BR# 5464	C	I	.	.	350	.	.
29	EAST MACHIAS	46200	00340	IR 340 @ BR# 5465	C	I	.	.	540	.	.
29	EAST MACHIAS	46308	00354	IR 354 NW/O SR 191	C	I	.	.	520	.	.
29	EAST MACHIAS	45800	00384	IR 384 (PALMER RD) @ BR# 1167	C	II	.	.	20	.	.
29	EAST MACHIAS	45908	00394	IR 394 (DWELLEY RD) NW/O SR 191	C	II	.	.	160	.	.
29	EAST MACHIAS	47508	00445	IR 445 (BRIDGE ST) NW/O SR 191	C	I	.	.	1320	.	.
29	EAST MACHIAS	85404	00445	IR 445 SE/O US 1	C	I	.	.	1610	.	.
29	EAST MACHIAS	47406	00448	IR 448 (WATER ST) SW/O SR 191 (E JCT)	C	I	.	.	70	.	.
29	EAST MACHIAS	47702	00448	IR 448 (WATER ST) NE/O IR 445(BRIDGE ST)	C	I	.	.	310	.	.
29	EAST MACHIAS	85308	00519	IR 519 (GUN HOUSE HILL RD) NW/O SR 191	C	I	.	.	30	.	.
29	EAST MACHIAS	72505	01188	IR 1188 S/O US 1 (E JCT)	C	II	.	.	650	.	.
29	EAST MACHIAS	80801	0191X	SR 191 N/O US 1 (W JCT)	A		2370	2330	2330	2300	2330
29	EAST MACHIAS	45901	0191X	SR 191 N/O IR 394(DWELLEY RD) @ BR# 3219	C	ATR80801	.	.	1660	.	.
29	EAST MACHIAS	46008	0191X	SR 191 NW/O IR 340 (CHURCH RD)	C	ATR80801	.	.	1890	.	.
29	EAST MACHIAS	46302	0191X	SR 191 NE/O IR 354	C	ATR80801	.	.	2220	.	.
29	EAST MACHIAS	47405	0191X	SR 191 S/O IR 448 (WATER ST) (E JCT)	C	ATR80801	.	.	810	.	.
29	EAST MACHIAS	47506	0191X	SR 191 SW/O IR 445 (BRIDGE ST)	C	ATR80801	.	.	1510	.	.
29	EAST MACHIAS	47606	0191X	SR 191 SW/O IR 520	C	ATR80801	.	.	360	.	.
29	EAST MACHIAS	81808	0191X	SR 191 NW/O IR 1204	C	ATR80801	.	.	2120	.	.
29	EASTPORT	43101	00395	IR 395(KENDALLS HEAD) N/O SR 190(COUNTY)	C	I	.	.	110	.	.
29	EASTPORT	00107	00398	DEEP COVE RD W/O SR 190	C	I	.	.	340	.	.
29	EASTPORT	01703	00406	BARRON RD E/O COUNTY RD	C	I	.	.	240	.	.
29	EASTPORT	01707	00406	BARRON RD W/O PRINCE COVE RD	C	I	.	.	690	.	.
29	EASTPORT	42501	00927	IR 927 (PERKINS RD) N/O IR 934	C	I	.	.	40	.	.
29	EASTPORT	42505	00927	IR 927 (BARTON RD) S/O IR 933(CONNER ST)	C	I	.	.	30	.	.
29	EASTPORT	42701	00927	IR 927 (QUODDY VILLAGE RD) N/O IR 930	C	I	.	.	210	.	.
29	EASTPORT	42901	00927	IR 927 (QUODDY VILLAGE RD) N/O IR 4013	C	I	.	.	220	.	.
29	EASTPORT	42707	00930	IR 930 W/O IR 927 (QUODDY VILLAGE RD)	C	I	.	.	40	.	.
29	EASTPORT	42606	00932	IR 932(LOVE LACE) SW/O IR 927(QUODDY VI)	C	I	.	.	110	.	.
29	EASTPORT	42507	00933	IR 933(CONNER ST) W/O IR 927(PERKINS RD)	C	I	.	.	210	.	.
29	EASTPORT	69006	00933	IR 933 SW/O SR 190	C	I	.	.	230	.	.
29	EASTPORT	43001	00935	IR 935 N/O IR 4013 (OLD RT 190)	C	I	.	.	60	.	.

2006 Maine Transportation Count Book

County

Washington

TOWN		STATION	ROAD	LOCATION	TYPE	GROUP	AADT02	AADT03	AADT04	AADT05	AADT06
29	EASTPORT	02102	01005	CLARK ST NE/O HIGH ST	C	I	.	.	720	.	.
29	EASTPORT	02108	01005	CLARK ST NW/O HIGH ST	C	I	.	.	920	.	.
29	EASTPORT	02203	01005	CLARK ST E/O SR 190	C	I	.	.	930	.	.
29	EASTPORT	00104	01328	COUNTY RD SE/O SR 190 (WASHINGTON ST)	C	I	.	.	1340	.	.
29	EASTPORT	00304	01328	COUNTY RD SE/O KEY ST	C	I	.	.	1100	.	.
29	EASTPORT	01704	01328	COUNTY RD SE/O BARRON RD	C	I	.	.	130	.	.
29	EASTPORT	01708	01328	COUNTY RD NW/O BARRON RD	C	I	.	.	1060	.	.
29	EASTPORT	00601	01329	HIGH ST N/O SR 190 (WASHINGTON ST)	C	I	.	.	1060	.	.
29	EASTPORT	00605	01329	HIGH ST S/O SR 190 (WASHINGTON ST)	C	I	.	.	1390	.	.
29	EASTPORT	01605	01329	HIGH ST S/O PLEASANT ST	C	I	.	.	320	.	.
29	EASTPORT	02104	01329	HIGH ST SE/O CLARK ST	C	I	.	.	620	.	.
29	EASTPORT	02504	01329	HIGH ST SE/O ADAMS ST	C	I	.	.	900	.	.
29	EASTPORT	02605	01329	HIGH ST S/O KEY ST	C	I	.	.	740	.	.
29	EASTPORT	02701	01329	HIGH ST N/O SOUTH ST	C	I	.	.	610	.	.
29	EASTPORT	02705	01329	HIGH ST S/O SOUTH ST	C	I	.	.	660	.	.
29	EASTPORT	02801	01329	HIGH ST N/O BATTERY ST	C	I	.	.	650	.	.
29	EASTPORT	01706	01330	PRINCE COVE RD SW/O BARRON RD	C	I	.	.	70	.	.
29	EASTPORT	00303	01331	KEY ST E/O COUNTY RD	C	I	.	.	350	.	.
29	EASTPORT	01207	01331	KEY ST W/O WATER ST	C	I	.	.	420	.	.
29	EASTPORT	02603	01331	KEY ST E/O HIGH ST	C	I	.	.	590	.	.
29	EASTPORT	02607	01331	KEY ST W/O HIGH ST	C	I	.	.	490	.	.
29	EASTPORT	00205	01336	BRIGHTON AVE S/O SR 190 (WASHINGTON ST)	C	I	.	.	540	.	.
29	EASTPORT	03501	01339	CHAPEL ST N/O KEY ST	C	I	.	.	110	.	.
29	EASTPORT	00707	01341	BOYNTON ST W/O HIGH ST	C	I	.	.	240	.	.
29	EASTPORT	03007	01341	BOYNTON ST W/O MIDDLE ST	C	I	.	.	570	.	.
29	EASTPORT	03103	01341	BOYNTON ST E/O KILBY ST	C	I	.	.	420	.	.
29	EASTPORT	03405	01345	BROADWAY S/O KEY ST	C	I	.	.	260	.	.
29	EASTPORT	02703	01348	SOUTH ST E/O HIGH ST	C	I	.	.	240	.	.
29	EASTPORT	02901	01349	HARRIS POINT RD N/O CLARK ST	C	I	.	.	160	.	.
29	EASTPORT	01001	01354	WATER ST N/O SR 190 (WASHINGTON ST)	C	I	.	.	2510	.	.
29	EASTPORT	01005	01354	WATER ST S/O SR 190 (WASHINGTON ST)	C	I	.	.	2120	.	.
29	EASTPORT	01303	01354	WATER ST E/O MIDDLE ST	C	I	.	.	410	.	.
29	EASTPORT	01901	01354	WATER ST N/O SULLIVAN ST	C	I	.	.	1470	.	.
29	EASTPORT	02004	01354	WATER ST SE/O CLARK ST	C	I	.	.	850	.	.

2006 Maine Transportation Count Book

County

Washington

TOWN		STATION	ROAD	LOCATION	TYPE	GROUP	AADT02	AADT03	AADT04	AADT05	AADT06
29	EASTPORT	02401	01354	WATER ST N/O ADAMS ST	C	I	.	.	1250	.	.
29	EASTPORT	01603	01355	PLEASANT ST E/O HIGH ST	C	I	.	.	100	.	.
29	EASTPORT	02803	01361	BATTERY ST E/O HIGH ST	C	I	.	.	330	.	.
29	EASTPORT	01301	01363	MIDDLE ST N/O WATER ST	C	I	.	.	80	.	.
29	EASTPORT	01305	01363	MIDDLE ST S/O WATER ST	C	I	.	.	260	.	.
29	EASTPORT	03201	01363	MIDDLE ST N/O KEY ST	C	I	.	.	150	.	.
29	EASTPORT	03205	01363	MIDDLE ST S/O KEY ST	C	I	.	.	100	.	.
29	EASTPORT	03305	01365	ELM ST S/O SR 190 (WASHINGTON ST)	C	I	.	.	40	.	.
29	EASTPORT	02503	01376	ADAMS ST E/O HIGH ST	C	I	.	.	500	.	.
29	EASTPORT	03601	01377	MITCHELL ST N/O ADAMS ST	C	I	.	.	180	.	.
29	EASTPORT	01907	01385	SULLIVAN ST W/O WATER ST	C	I	.	.	210	.	.
29	EASTPORT	03301	01386	SOLDIERS LN N/O SR 190 (WASHINGTON ST)	C	I	.	.	80	.	.
29	EASTPORT	42801	01392	IR 1392 N/O IR 4013 (OLD RT 190)	C	I	.	.	70	.	.
29	EASTPORT	01804	01804	LINCOLN ST SE/O COUNTY RD	C	I	.	.	150	.	.
29	EASTPORT	00103	0190X	SR 190 (WASHINGTON ST) E/O COUNTY RD	C	I	.	.	3600	.	.
29	EASTPORT	00108	0190X	SR 190 (COUNTY) NW/O SR 190 (WASHINGTON)	C	I	.	.	3660	.	.
29	EASTPORT	00603	0190X	SR 190 (WASHINGTON ST) E/O HIGH ST	C	I	.	.	2070	.	.
29	EASTPORT	00607	0190X	SR 190 (WASHINGTON ST) W/O HIGH ST	C	I	.	.	3000	.	.
29	EASTPORT	01007	0190X	SR 190 (WASHINGTON ST) W/O WATER ST	C	I	.	.	1780	.	.
29	EASTPORT	02204	0190X	SR 190 SE/O CLARK ST	C	I	.	.	3400	.	.
29	EASTPORT	02207	0190X	SR 190 W/O CLARK ST	C	I	.	.	3900	.	.
29	EASTPORT	43204	0190X	SR 190 (COUNTY RD) SE/O IR 398(DRUMMOND)	C	I	.	.	3790	.	.
29	EASTPORT	43208	0190X	SR 190 (COUNTY RD) NW/O IR 398(DRUMMOND)	C	I	.	.	3830	.	.
29	EASTPORT	69001	0190X	SR 190 N/O IR 933	C	I	.	.	3510	.	.
29	EASTPORT	69104	0190X	SR 190 SE/O IR 4013	C	I	.	.	3680	.	.
29	EASTPORT	69108	0190X	SR 190 NW/O IR 4013	C	I	.	.	3380	.	.
29	EASTPORT	73105	0190X	SR 190 S/O IR 1607 @ PERRY TL	C	I	.	.	3530	.	.
29	EASTPORT	03101	04003	KILBY ST N/O BOYNTON ST	C	I	.	.	130	.	.
29	EASTPORT	43007	04013	IR 4013 (TOLL BRIDGE RD) W/O IR 935	C	I	.	.	90	.	.
29	EASTPORT	69107	04013	IR 4013 W/O SR 190	C	I	.	.	600	.	.
29	EDMUNDS TWP	40205	0001X	US 1 S/O IR 909 (S TRAIL)	C	ATR80803	.	.	1770	.	.
29	EDMUNDS TWP	40304	0001X	US 1 SE/O IR 2163 (S JCT)	C	ATR80803	.	.	1610	.	.
29	EDMUNDS TWP	40404	0001X	US 1 SE/O IR 391 (S EDMONDS RD) (N JCT)	C	ATR80803	.	.	1680	.	.
29	EDMUNDS TWP	40604	0001X	US 1 SE/O IR 347 (PRESTON RD)	C	ATR80803	.	.	1840	.	.

2006 Maine Transportation Count Book

County

Washington

TOWN	STATION	ROAD	LOCATION	TYPE	GROUP	AADT02	AADT03	AADT04	AADT05	AADT06
EDMUNDS TWP	70504	0001X	US 1 SE/O IR 4009 (BUNKER HILL RD)	C	ATR80803	.	.	1880	.	.
EDMUNDS TWP	40607	00347	IR 347 (RIVER RD) W/O US 1	C	I	.	.	60	.	.
EDMUNDS TWP	40203	00391	IR 391 (S EDMONDS RD) E/O US 1 (S JCT)	C	III	.	.	240	.	.
EDMUNDS TWP	40402	00391	IR 391 (S EDMONDS RD) NE/O US 1 (N JCT)	C	III	.	.	160	.	.
EDMUNDS TWP	40902	00910	IR 910 (TIDE FARM RD) NE/O US 1 @BR#2855	C	III	.	.	80	.	.
EDMUNDS TWP	70506	04009	IR 4009 (BUNKER HILL RD) SW/O US 1	C	I	.	.	290	.	.
FOREST CITY TWP	30502	00807	IR 807 NE/O IR 814 @ US CUSTOMS @BR#2379	C	II	.	.	50	.	.
FOREST CITY TWP	30504	00807	IR 807 SE/O IR 1429	C	II	.	.	80	.	.
GRAND LAKE STREAM PL	37500	00822	IR 822 @ BR# 2596	C	II	.	.	460	.	.
GRAND LAKE STREAM PL	37602	00822	IR 822 NE/O IR 876 (WATER ST)	C	II	.	.	610	.	.
GRAND LAKE STREAM PL	37607	00822	IR 822 W/O IR 876 (CANAL ST) @ BR# 3584	C	II	.	.	430	.	.
GRAND LAKE STREAM PL	65603	00822	IR 822 E/O IR 875 (CHURCH ST)	C	II	.	.	510	.	.
GRAND LAKE STREAM PL	37604	00876	IR 876 (WATER ST) SE/O IR 822	C	II	.	.	450	.	.
GRAND LAKE STREAM PL	37608	00876	IR 876 (CANAL ST) NW/O IR 822	C	II	.	.	100	.	.
GRAND LAKE STREAM PL	37706	01309	IR 1309 SW/O IR 877	C	II	.	.	140	.	.
HARRINGTON	31206	0001A	US 1A SW/O US 1	C	II	.	3310	3020	.	.
HARRINGTON	66800	0001A	US 1A @ MILBRIDGE TL	C	II	.	.	2930	.	.
HARRINGTON	67006	0001A	US 1A SW/O IR 623 (WILSON DIST RD)	C	II	.	.	2850	.	.
HARRINGTON	31202	0001X	US 1 NE/O US 1A	C	II	.	6520	6890	.	.
HARRINGTON	31207	0001X	US 1 W/O US 1A	C	II	.	3670	4320	.	.
HARRINGTON	49807	0001X	US 1 W/O IR 623 (WILSON DIST)	C	II	.	.	3970	.	.
HARRINGTON	50002	0001X	US 1 NE/O IR 627 (DORMAN RD)	C	II	.	.	3350	.	.
HARRINGTON	50006	0001X	US 1 SW/O IR 627 (DORMAN RD)	C	II	.	.	3260	.	.
HARRINGTON	59206	0001X	US 1 SW/O IR 621	C	II	.	.	6810	.	.
HARRINGTON	50106	00620	IR 620 SW/O IR 627 @ BR# 1173 @ TL	C	I	.	.	120	.	.
HARRINGTON	59204	00621	IR 621 (MARSHVILLE RD) SE/O US 1	C	II	.	.	960	.	.
HARRINGTON	49805	00623	IR 623 (WILSON DIST) S/O US 1 @ BR# 2478	C	I+II	.	.	390	.	.
HARRINGTON	67004	00623	IR 623 (WILSON DIST) SE/O US 1A	C	II	.	.	280	.	.
HARRINGTON	50005	00627	IR 627 (DORMAN RD) S/O US 1	C	I	.	.	340	.	.
HARRINGTON	50104	00627	IR 627 (WING RD) SE/O IR 620	C	I	.	.	70	.	.
HARRINGTON	50108	00627	IR 627 NW/O IR 620	C	I	.	.	160	.	.
HARRINGTON	50003	00643	IR 643(WILEY DISTRICT) E/O IR627(DORMAN)	C	I+II	.	.	480	.	.
HARRINGTON	49701	01113	IR 1113 N/O US 1	C	I	.	.	490	.	.
JONESBORO	34501	0001A	US 1A N/O US 1	C	II	.	.	1490	.	.

2006 Maine Transportation Count Book

County

Washington

TOWN		STATION	ROAD	LOCATION	TYPE	GROUP	AADT02	AADT03	AADT04	AADT05	AADT06
29	JONESBORO	34302	0001X	US 1 NE/O SR 187 (E JCT)	C	II	.	4770	4400	.	.
29	JONESBORO	34306	0001X	US 1 SW/O SR 187 (E JCT)	C	II	.	3800	3690	.	.
29	JONESBORO	34503	0001X	US 1 E/O US 1A	C	II	.	.	4160	.	.
29	JONESBORO	34505	0001X	US 1 S/O US 1A	C	II	.	.	4570	.	.
29	JONESBORO	47802	0001X	US 1 NE/O IR 1166	C	II	.	.	5320	.	.
29	JONESBORO	47902	0001X	US 1 NE/O IR 733	C	II	.	.	5680	.	.
29	JONESBORO	32003	00370	IR 370 E/O IR 1166	C	II	.	.	780	.	.
29	JONESBORO	47808	00552	IR 552 (STATION RD) NW/O US 1	C	I	.	.	460	.	.
29	JONESBORO	34305	0187X	SR 187 S/O US 1 (E JCT)	C	II	.	1060	1220	.	.
29	JONESPORT	49108	00187	SR 187 NW/O IR 551 (FIRE RD) (N JCT)	C	II	.	.	1210	.	.
29	JONESPORT	01804	00551	KELLY POINT RD SE/O SR 187 (MAIN ST)	C	II	.	.	470	.	.
29	JONESPORT	49103	00551	IR 551 (FIRE RD) E/O SR 187 (N JCT)	C	II	.	.	120	.	.
29	JONESPORT	00107	01128	MAIN ST W/O SR 187(INDIAN RV RD)	C	I+II	.	.	780	.	.
29	JONESPORT	00203	01128	MAIN ST E/O SADDLERS RD	C	I+II	.	.	350	.	.
29	JONESPORT	00705	01131	BRIDGE ST S/O SR 187 (MAIN ST)	C	II	.	.	2310	.	.
29	JONESPORT	00801	01134	MOOSABEC ST N/O SR 187 (MAIN ST)	C	I	.	.	140	.	.
29	JONESPORT	01205	01141	OCEAN ST S/O SR 187 (MAIN ST)	C	II	.	.	390	.	.
29	JONESPORT	01305	01143	STEVENS ST S/O SR 187 (MAIN ST)	C	II	.	.	490	.	.
29	JONESPORT	01404	01145	SAWYER SQ SE/O SR 187 (MAIN ST)(W JCT)	C	II	.	.	770	.	.
29	JONESPORT	01506	01156	OLD HOUSE PT RD SW/O SAWYER SQ	C	II	.	.	340	.	.
29	JONESPORT	00901	01527	COGSWELL ST N/O SR 187 (MAIN ST)	C	I	.	.	40	.	.
29	JONESPORT	00101	0187X	SR 187(INDIAN RV RD) N/O SR 187(MAIN ST)	C	II	.	.	2880	.	.
29	JONESPORT	00300	0187X	SR 187(INDIAN RIVER RD) @ CUL @ POLE#312	C	II	.	.	2430	.	.
29	JONESPORT	00703	0187X	SR 187 (MAIN ST) E/O BRIDGE ST	C	I+II	.	.	3820	.	.
29	JONESPORT	00707	0187X	SR 187 (MAIN ST) W/O BRIDGE ST	C	II	.	.	3440	.	.
29	JONESPORT	00807	0187X	SR 187 (MAIN ST) W/O MOOSABEC ST	C	I+II	.	.	3760	.	.
29	JONESPORT	00903	0187X	SR 187 (MAIN ST) E/O COGSWELL ST	C	I+II	.	.	3790	.	.
29	JONESPORT	01107	0187X	SR 187 (MAIN ST) W/O CURLEW ST	C	I+II	.	.	3860	.	.
29	JONESPORT	01307	0187X	SR 187 (MAIN ST) W/O GAELIC SQ	C	I+II	.	.	3580	.	.
29	JONESPORT	01406	0187X	SR 187 (MAIN ST) SW/O SAWYER SQ (W JCT)	C	I+II	.	.	3020	.	.
29	JONESPORT	01606	0187X	SR 187 (MAIN ST) SW/O SAWYER SQ (E JCT)	C	I+II	.	.	2380	.	.
29	JONESPORT	01806	0187X	SR 187 (MAIN ST) SW/O KELLY POINT RD	C	I+II	.	.	1930	.	.
29	JONESPORT	01902	0187X	SR 187 (MAIN ST) NE/O PEAT MOSS RD	C	II	.	.	1480	.	.
29	KOSSUTH TWP	80900	0006X	SR 6 @ TOPSFIELD TWP TL	C	II	.	.	1230	.	.

2006 Maine Transportation Count Book

County

Washington

TOWN	STATION	ROAD	LOCATION	TYPE	GROUP	AADT02	AADT03	AADT04	AADT05	AADT06
LAMBERT LAKE TWP	30806	0006X	SR 6 SW/O IR 817 @ BR# 3441 @ SCOTT BK	C	II	.	.	410	.	.
LUBEC	37003	00329	IR 329 (BOOT COVE RD) E/O SR 191	C	II+III	.	.	110	.	.
LUBEC	37804	00329	IR 329 (BOOT CV) SE/O IR 460 (W QUODDY)	C	II+III	.	.	150	.	.
LUBEC	37808	00329	IR 329 (BOOT CV) NW/O IR 460 (W QUODDY)	C	III	.	.	380	.	.
LUBEC	44708	00331	IR 331 (TIMBER CV) NW/O SR 189 @ BR#5308	C	III	.	.	580	.	.
LUBEC	44808	00331	IR 331 (TIMBER COVE RD) NW/O IR 427	C	III	.	.	160	.	.
LUBEC	36904	00335	IR 335 (MAPLE TREE RD) SE/O SR 189	C	II	.	.	400	.	.
LUBEC	36908	00335	IR 335 (N LUBEC RD) NW/O SR 189	C	III	.	.	770	.	.
LUBEC	44600	00335	IR 335 ((N LUBEC RD)) @ BR# 3075	C	III	.	.	320	.	.
LUBEC	44908	00339	IR 339 (YOUNGS PT RD) NW/O IR 427	C	III	.	.	280	.	.
LUBEC	44902	00427	IR 427 (LEAD ME RD) NE/O IR 339	C	III	.	.	170	.	.
LUBEC	37803	00460	IR 460 (W QUODDY HEAD RD) E/O IR 329	C	III	.	.	290	.	.
LUBEC	00505	01394	SOUTH ST S/O SR 189 (WASHINGTON ST)	C	II	.	.	390	.	.
LUBEC	00501	01395	CHURCH ST N/O SR 189 (WASHINGTON ST)	C	II	.	.	140	.	.
LUBEC	02101	01395	CHURCH ST N/O SCHOOL ST	C	II	.	.	110	.	.
LUBEC	02003	01397	SCHOOL ST E/O MAIN ST	C	II	.	.	360	.	.
LUBEC	02103	01397	SCHOOL ST E/O CHURCH ST	C	II	.	.	220	.	.
LUBEC	02407	01397	SCHOOL ST W/O WATER ST	C	II	.	.	200	.	.
LUBEC	00102	01398	MAIN ST NE/O SR 189 (WASHINGTON ST)	C	II	.	.	1450	.	.
LUBEC	01603	01398	MAIN ST E/O EUREKA ST	C	II	.	.	610	.	.
LUBEC	01606	01398	MAIN ST SW/O EUREKA ST	C	II	.	.	630	.	.
LUBEC	02002	01398	MAIN ST NE/O SCHOOL ST	C	II	.	.	650	.	.
LUBEC	02507	01398	MAIN ST W/O WATER ST	C	II	.	.	440	.	.
LUBEC	02803	01398	MAIN ST E/O FOREST AVE	C	II	.	.	610	.	.
LUBEC	00801	01403	PLEASANT ST N/O MOWRY ST	C	II	.	.	240	.	.
LUBEC	01201	01403	PLEASANT ST N/O SR 189 (WASHINGTON ST)	C	II	.	.	250	.	.
LUBEC	00605	01404	DEWEY ST S/O SR 189 (WASHINGTON ST)	C	II	.	.	220	.	.
LUBEC	00907	01404	MOWRY ST W/O LWR WATER ST	C	II	.	.	120	.	.
LUBEC	00901	01406	LWR WATER ST N/O MOWRY ST	C	II	.	.	90	.	.
LUBEC	00905	01406	LWR WATER ST S/O MOWRY ST	C	II	.	.	70	.	.
LUBEC	02904	01412	COMMERCIAL ST SE/O PLEASANT ST	C	II	.	.	350	.	.
LUBEC	01808	01416	MOMUMENT ST NW/O MAIN ST	C	II	.	.	400	.	.
LUBEC	00401	01417	JOHNSON ST N/O HOBSON ST	C	II	.	.	320	.	.
LUBEC	01203	01573	WATER ST E/O PLEASANT ST	C	II	.	.	1520	.	.

2006 Maine Transportation Count Book

County

Washington

TOWN	STATION	ROAD	LOCATION	TYPE	GROUP	AADT02	AADT03	AADT04	AADT05	AADT06
LUBEC	02401	01573	WATER ST N/O SCHOOL ST	C	II	.	.	1330	.	.
LUBEC	02405	01573	WATER ST S/O SCHOOL ST	C	II	.	.	1380	.	.
LUBEC	01404	01614	SOUTH ST EXT SE/O SR 189 (MAIN ST)	C	II	.	.	370	.	.
LUBEC	00103	0189X	SR 189 (WASHINGTON ST) E/O MAIN ST	C	II	.	.	3310	.	.
LUBEC	00106	0189X	SR 189 (MAIN ST) SW/O SR 189(WASHINGTON)	C	II	.	.	3950	.	.
LUBEC	00206	0189X	SR 189 (MAIN ST) SW/O TRANS LINES @ CUL	C	II	.	.	4000	.	.
LUBEC	01100	0189X	SR 189 (WASHINGTON ST) @ CUSTOMS ON BR	C	II+III	.	.	1260	.	.
LUBEC	01207	0189X	SR 189 (WASHINGTON ST) W/O PLEASANT ST	C	II	.	.	2670	.	.
LUBEC	36603	0189X	SR 189 E/O SR 191	C	II	.	.	2920	.	.
LUBEC	36906	0189X	SR 189 SW/O IR 335 (N LUBEC RD)	C	II	.	.	3220	.	.
LUBEC	44706	0189X	SR 189 SW/O IR 331 @ BR# 2527	C	II	.	.	2310	.	.
LUBEC	36605	0191X	SR 191 S/O SR 189	C	II	.	.	620	.	.
LUBEC	37002	0191X	SR 191 NE/O IR 329 (BOOT COVE RD)	C	II	.	.	420	.	.
LUBEC	37006	0191X	SR 191 SW/O IR 329 (BOOT COVE RD)	C	II	.	.	360	.	.
MACHIAS	02007	0001A	US 1A (COURT ST) W/O US 1 (MAIN ST)	C	I	.	.	3610	.	.
MACHIAS	03107	0001A	US 1A (COURT ST) W/O SR 192 (BROADWAY)	C	I	.	.	3330	.	.
MACHIAS	03407	0001A	US 1A (COURT ST) W/O MEDICAL CENTER ENT	C	I+II	.	.	2030	.	.
MACHIAS	00206	0001X	US 1 (DUBLIN ST) SW/O HARWOOD ST @ CUL	C	I	.	.	9760	.	.
MACHIAS	02006	0001X	US 1 (MAIN ST) SW/O US 1A (COURT ST)	C	I	.	.	7680	.	.
MACHIAS	02100	0001X	US 1 (COURT ST) @ CUL	C	I	.	.	10030	.	.
MACHIAS	03506	0001X	US 1 (DUBLIN ST) SW/O SR 92 (ELM ST)	C	I+II	.	.	10400	.	.
MACHIAS	34906	0001X	US 1 SW/O IR 319	C	II	.	.	4330	.	.
MACHIAS	46603	0001X	US 1 E/O IR 916 (OLD COUNTY RD)	C	I	.	.	8220	.	.
MACHIAS	46601	00317	IR 317 (HADLEY LAKE RD) N/O US 1	C	I	.	.	1570	.	.
MACHIAS	31606	00319	IR 319 SW/O IR 443(W KENNEBEC) @BR# 5544	C	II	.	.	900	.	.
MACHIAS	34905	00319	IR 319 S/O US 1	C	II	.	2140	1800	.	.
MACHIAS	31604	00443	IR 443(W KENNEBEC RD) SE/O IR352@BR#5674	C	II	.	.	290	.	.
MACHIAS	46602	00916	IR 916 (OLD COUNTY RD) NE/O US 1	C	I	.	.	600	.	.
MACHIAS	00802	0092X	SR 92 (ELM ST) NE/O SCHOOL ST	C	I+II	.	.	1560	.	.
MACHIAS	01003	0092X	SR 92 (ELM ST) E/O STACKPOLE RD @ CUL	C	I+II	.	.	860	.	.
MACHIAS	03502	0092X	SR 92 (ELM ST) NE/O O'BRIEN AVE #1	C	I+II	.	.	1760	.	.
MACHIAS	35004	00971	IR 971(E KENNEBEC RD) SE/O IR 319	C	II	.	.	340	.	.
MACHIAS	00707	01253	GROVE ST W/O US 1 (DUBLIN ST)	C	I	.	.	250	.	.
MACHIAS	00201	01256	HARWOOD ST N/O US 1 (DUBLIN ST)	C	I	.	.	240	.	.

2006 Maine Transportation Count Book

County

Washington

TOWN	STATION	ROAD	LOCATION	TYPE	GROUP	AADT02	AADT03	AADT04	AADT05	AADT06
MACHIAS	01900	0192X	SR 192 (BROADWAY) @ CUL	C	I+II	.	.	1950	.	.
MACHIASPORT	35404	00321	IR 321 (MACHIAS RD) SE/O IR 971	C	III	.	.	1280	.	.
MACHIASPORT	47005	00321	IR 321 S/O IR 433 (LOBSTER POND)	C	III	.	.	380	.	.
MACHIASPORT	71307	00429	IR 429 W/O SR 191	C	II	.	.	140	.	.
MACHIASPORT	35501	00435	IR 435 N/O SR 92	C	II	.	.	1410	.	.
MACHIASPORT	35504	0092X	SR 92 SE/O IR 435	C	II	.	.	1700	.	.
MACHIASPORT	45700	0191X	SR 191 @ WHITING TL	C	I+II	.	.	850	.	.
MACHIASPORT	71304	0191X	SR 191 SE/O IR 429	C	I+II	.	.	1200	.	.
MARION TWP	58308	00336	IR 336 (E RDG RD) NW/O SR 86	C	II	.	.	40	.	.
MARION TWP	35604	0086X	SR 86 SE/O SR 191 @ NUMBER 14 PLT TL	C	I	.	.	330	.	.
MARION TWP	58304	0086X	SR 86 SE/O IR 336 (E RDG RD)	C	I	.	.	360	.	.
MARION TWP	58306	0086X	SR 86 SW/O IR 336 (E RDG RD)	C	I	.	.	380	.	.
MARION TWP	35606	0191X	SR 191 SW/O SR 86 @ NUMBER 14 PLT TL	C	ATR80801	.	.	1050	.	.
MARSHFIELD	71606	00940	IR 940 (MARSHFIELD) SW/O SR 192 @BR#1177	C	II	.	.	480	.	.
MARSHFIELD	34708	0192X	SR 192 NW/O IR 317 (RDG RD)	C	II	.	.	1390	.	.
MARSHFIELD	71608	0192X	SR 192 NW/O IR 940	C	II	.	.	1220	.	.
MEDDYBEMPS	38405	00312	IR 312 S/O SR 214	C	I	.	.	10	.	.
MEDDYBEMPS	38402	0191X	SR 191 NE/O SR 214	C	ATR80801	.	.	1460	.	.
MEDDYBEMPS	38407	0191X	SR 191 W/O IR 312	C	ATR80801	.	.	1400	.	.
MEDDYBEMPS	38403	0214X	SR 214 E/O SR 191	C	I	.	.	950	.	.
MILBRIDGE	83302	0001A	US 1A (BRIDGE ST) NE/O US 1	C	II	.	.	4310	.	.
MILBRIDGE	83501	0001A	US 1A N/O IR 633	C	II	.	.	2890	.	.
MILBRIDGE	83506	0001A	US 1A SW/O IR 633	C	II	.	.	2880	.	.
MILBRIDGE	39705	0001X	US 1 (MAIN ST) S/O IR 648 (COTTAGE ST)	C	II	.	.	6150	.	.
MILBRIDGE	83001	0001X	US 1 (MAIN ST) N/O IR 639 (WYMAN RD)	C	II	.	.	5630	.	.
MILBRIDGE	83007	0001X	US 1 (MAIN ST) W/O IR 639 (WYMAN RD)	C	II	.	.	5040	.	.
MILBRIDGE	83105	0001X	US 1 (HIGH ST) S/O IR 982	C	II	.	.	5040	.	.
MILBRIDGE	83204	0001X	US 1 (MAIN ST) SE/O IR 759	C	II	.	.	2660	.	.
MILBRIDGE	83208	0001X	US 1 NW/O IR 759	C	II	.	.	2440	.	.
MILBRIDGE	50402	00626	IR 626 (RAYS PT) NE/O IR 631 (FLAHERTY)	C	II	.	.	270	.	.
MILBRIDGE	84608	00629	IR 629 (HEATH RD) NW/O US 1A	C	I	.	.	160	.	.
MILBRIDGE	50502	00631	IR 631 (RIM RD) NE/O IR 633 @ BR# 3655	C	II	.	.	420	.	.
MILBRIDGE	50506	00631	IR 631 (BACK BAY RD) SW/O IR 633 (RIM)	C	II	.	.	490	.	.
MILBRIDGE	84604	00631	IR 631 (FLAHERTY RD) SE/O US 1A	C	II	.	.	100	.	.

2006 Maine Transportation Count Book

County

Washington

TOWN	STATION	ROAD	LOCATION	TYPE	GROUP	AADT02	AADT03	AADT04	AADT05	AADT06
MILBRIDGE	83504	00633	IR 633 SE/O US 1A	C	II	.	.	140	.	.
MILBRIDGE	50606	00636	IR 636 SW/O IR 633 (RIM RD)	C	II	.	.	480	.	.
MILBRIDGE	83508	00637	IR 637 NW/O US 1A	C	II	.	.	480	.	.
MILBRIDGE	83005	00639	IR 639 (WYMAN RD) S/O US 1(MAIN ST)	C	I	.	.	1660	.	.
MILBRIDGE	83206	00759	IR 759 SW/O US 1	C	I	.	.	270	.	.
NO 14 TWP	35601	0191X	SR 191 N/O SR 86	C	ATR80801	.	.	820	.	.
NO 21 TWP	39402	00310	IR 310 NE/O IR 892	C	II	.	.	430	.	.
NO 21 TWP	39404	00310	IR 310 SE/O IR 4019	C	II	.	.	330	.	.
NO 21 TWP	39408	00892	IR 892 NW/O IR 4019	C	III	.	.	150	.	.
PASSAMAQUODDY (IND T	31306	00822	IR 822 SW/O US 1	C	II	.	.	1240	.	.
PASSAMAQUODDY (IND T	37105	00833	IR 833 SE/O IR 822	C	II	.	.	880	.	.
PASSAMAQUODDY (IND T	37304	00833	IR 833 SE/O IR 3012 (NEWELL DR)	C	II	.	.	500	.	.
PASSAMAQUODDY (IND T	37405	00833	IR 833 (PETER DANA POI) S/O IR 1632	C	II	.	.	360	.	.
PASSAMAQUODDY (IND T	37203	01626	IR 1626 (PIT RD) E/O IR 833 (PETER DANA)	C	II	.	.	80	.	.
PASSAMAQUODDY (IND T	37306	03012	IR 3012 (NEWELL DR) SW/O IR 833	C	II	.	.	270	.	.
PASSAMAQUODDY (IND T	35802	03015	IR 3015 NE/O IR 3014	C	II+III	.	.	880	.	.
PEMBROKE	60402	0001X	US 1 NE/O SR 214	C	I	.	.	3180	.	.
PEMBROKE	68806	0001X	US 1 SW/O IR 1231 (OLD COUNTY RD)	C	I	.	.	2880	.	.
PEMBROKE	69903	0001X	US 1 E/O IR 341 (FRONT ST) @ BR# 5326	C	I	.	.	2410	.	.
PEMBROKE	70107	0001X	US 1 W/O IR 925 (HIGH ST)	C	I	.	.	2840	.	.
PEMBROKE	60404	00214	SR 214 SE/O US 1	C	I	.	.	1020	.	.
PEMBROKE	30901	00305	IR 305 (RIDGE RD) N/O IR 361 (E RIVER)	C	II	.	490	.	.	.
PEMBROKE	30902	00305	IR 305 (RIDGE RD) NE/O IR 341 @ BR# 3884	C	II	.	410	480	.	.
PEMBROKE	64202	00305	IR 305 (UPR CROSS RD) NE/O SR 214	C	I+II	.	180	160	.	.
PEMBROKE	30904	00341	IR 341 (LITTLE FALLS) SE/O IR 305(RIDGE)	C	II	.	390	.	.	.
PEMBROKE	30908	00341	IR 341 (MT TOM RD) NW/O IR 305 (RIDGE)	C	II	.	260	.	.	.
PEMBROKE	69905	00341	IR 341 (FRONT ST) S/O US 1	C	I	.	.	440	.	.
PEMBROKE	41504	00351	IR 351 (OX COVE) SE/O IR 357(CLARK RDG)	C	II	.	.	80	.	.
PEMBROKE	30903	00361	IR 361 (E RIVER RD) E/O IR 305 (RIDGE)	C	II	.	150	.	.	.
PEMBROKE	70002	00361	IR 361(LITTLE RV RD) NE/O IR 341@BR#1166	C	I	.	.	280	.	.
PEMBROKE	68705	00903	IR 903 S/O IR 1231 (OLD COUNTY RD)	C	I	.	.	610	.	.
PEMBROKE	70105	00925	IR 925 (HIGH ST) S/O US 1	C	I	.	.	60	.	.
PEMBROKE	41806	01231	IR 1231(OLD COUNTY) SW/O IR 1004@BR#2208	C	I	.	.	590	.	.
PEMBROKE	68803	01231	IR 1231 (OLD COUNTY RD) E/O US 1	C	I	.	.	460	.	.

County **2006 Maine Transportation Count Book**

Washington		STATION	ROAD	LOCATION	TYPE	GROUP	AADT02	AADT03	AADT04	AADT05	AADT06
TOWN											
29	PEMBROKE	69604	01231	IR 1231(OLD COUNTY) SE/O IR 341 @BR#2021	C	I	.	.	590	.	.
29	PEMBROKE	60408	0214X	SR 214 (AYERS JCT RD) NW/O US 1	C	I	.	.	1730	.	.
29	PEMBROKE	64208	0214X	SR 214 (AYERS JCT RD) NW/O IR 305	C	I	.	.	1410	.	.
29	PERRY	39501	0001X	US 1 N/O IR 371 (SHORE RD) (S JCT)	C	I	.	.	2500	.	.
29	PERRY	42008	0001X	US 1 NW/O IR 371 (SHORE RD) (N JCT)	C	I	.	.	2330	.	.
29	PERRY	42108	0001X	US 1 NW/O IR 476 (LAKE RD) @ BR# 2683	C	I	.	.	2210	.	.
29	PERRY	64101	0001X	US 1 N/O SR 190	C	I	.	.	2710	.	.
29	PERRY	64105	0001X	US 1 S/O SR 190	C	I	.	2410	2710	.	.
29	PERRY	68508	0001X	US 1 NW/O IR 1231 (OLD COUNTY RD)	C	I	.	.	2460	.	.
29	PERRY	72606	0001X	US 1 SW/O IR 900	C	I	.	.	2490	.	.
29	PERRY	73008	0001X	US 1 NW/O IR 464	C	I	.	.	2470	.	.
29	PERRY	42202	00305	IR 305 (UPR CROSS RD) NE/O IR 480	C	II	.	.	460	.	.
29	PERRY	41908	00369	IR 369(GOLDING RD) NW/O IR 480(S MEADOW)	C	I	.	.	290	.	.
29	PERRY	39502	00371	IR 371 (SHORE RD) NE/O US 1	C	I	.	.	500	.	.
29	PERRY	73005	00464	IR 464 (CANNON HILL RD) S/O US 1	C	I+II	.	.	180	.	.
29	PERRY	42406	00472	IR 472 (OLD EASTPORT RD) SW/O SR 190	C	I	.	.	300	.	.
29	PERRY	42106	00476	IR 476 (LAKE RD) SW/O US 1	C	I	.	.	320	.	.
29	PERRY	68506	01231	IR 1231(OLD COUNTY RD) SW/O US 1@BR#2770	C	I	.	.	220	.	.
29	PERRY	42404	0190X	SR 190 SE/O IR 472 (OLD EASTPORT RD)	C	I	.	.	4610	.	.
29	PERRY	64104	0190X	SR 190 SE/O US 1	C	I	.	3920	4220	.	.
29	PERRY	72605	04012	IR 4012 (OLD EASTPORT RD) S/O IR 900	C	I	.	.	270	.	.
29	PERRY	35908	04017	IR 4017 NW/O US 1	C	I+II	.	.	670	.	.
29	PRINCETON	31504	0001X	US 1 SE/O IR 309 (S PRINCETON RD)	C		.	.	3060	.	2170
29	PRINCETON	31508	0001X	US 1 NW/O IR 309 (S PRINCETON RD)	C	I	.	.	3590	.	.
29	PRINCETON	31808	0001X	US 1 NW/O IR 1496 @ BR# 2688	C	I	.	.	4670	.	.
29	PRINCETON	31505	00309	IR 309 (S PRINCETON RD) S/O US 1	C	I	.	.	580	.	.
29	PRINCETON	59704	00309	IR 309 (S PRINCETON RD) SE/O IR 316	C	I	.	.	620	.	.
29	PRINCETON	59708	00309	IR 309 (S PRINCETON RD) NW/O IR 316	C	I	.	.	580	.	.
29	PRINCETON	30006	00310	IR 310 SW/O US 1	C	II	.	.	1120	.	.
29	PRINCETON	90002	00310	IR 310 NE/O IR 1284	C	II	.	.	830	.	.
29	PRINCETON	59703	00316	IR 316 (POCOMOONSHINE RD) E/O IR 309	C	I	.	.	430	.	.
29	PRINCETON	59707	00316	IR 316 W/O IR 309 (S PRINCETON RD)	C	II	.	.	130	.	.
29	PRINCETON	39206	00883	IR 883 (ROLFE ST) SW/O US 1	C	I	.	.	280	.	.
29	PRINCETON	39102	00885	IR 885 (DUMP RD) NE/O US 1	C	I+II	.	.	960	.	.

2006 Maine Transportation Count Book

Washington

TOWN	STATION	ROAD	LOCATION	TYPE	GROUP	AADT02	AADT03	AADT04	AADT05	AADT06
29 PRINCETON	90004	01284	IR 1284 (AIRPORT RD) SE/O IR 310	C	I	.	.	60	.	.
29 PRINCETON	38802	01512	IR 1512 (EASTERN CUTOFF) NE/O US 1	C	I+II	.	.	300	.	.
29 PRINCETON	39308	01585	IR 1585 (GREENLAND PT RD) NW/O IR 310	C	II	.	.	30	.	.
29 ROBBINSTON	39801	0001X	US 1 N/O IR 305 (RIDGE RD) @ BR# 6205	C	I	.	.	2730	.	.
29 ROBBINSTON	39805	0001X	US 1 S/O IR 305 (RIDGE RD)	C	I	.	.	2210	.	.
29 ROBBINSTON	43506	00304	IR 304 (NO 3 RD) SW/O US 1	C	I	.	.	180	.	.
29 ROBBINSTON	43306	00305	IR 305(RIDGE RD) SW/O IR 363(SWEENEY RD)	C	I	.	.	490	.	.
29 ROBBINSTON	43308	00363	IR 363(SWEENEY RD) NW/O IR 305 @ BR#2566	C	I	.	.	100	.	.
29 ROQUE BLUFFS	31705	00319	IR 319 (ROQUE BLUFFS) S/O IR 366@BR#3701	C	II	.	.	680	.	.
29 ROQUE BLUFFS	71803	00319	IR 319(JOHNSON COVE) E/O IR 372 @BR#3964	C	II	.	.	220	.	.
29 ROQUE BLUFFS	71806	00372	IR 372 SW/O IR 319 (N/O STATE PARK ENT)	C	II+III	.	.	320	.	.
29 ROQUE BLUFFS	86306	00372	IR 372 SW/O STATE PARK ENT(&PARKING LOT)	C	II+III	.	.	220	.	.
29 STEUBEN	33302	0001X	US 1 NE/O IR 1570 @ T7 SD TL @ BR# 5955	C	II	.	.	4210	.	.
29 STEUBEN	59102	0001X	US 1 NE/O IR 1577 (STEVENS DR) (E JCT)	C	II	.	.	4220	.	.
29 STEUBEN	59108	0001X	US 1 NW/O IR 1577 (STEVENS DR) (W JCT)	C	II	.	.	4510	.	.
29 STEUBEN	82307	0001X	US 1 W/O IR 1570 (VILLAGE RD)	C	II	.	.	4130	.	.
29 STEUBEN	67604	00641	IR 641 SE/O US 1	C	II	.	.	900	.	.
29 STEUBEN	67302	00644	IR 644 NE/O IR 653 @ BR# 5447	C	I	.	.	380	.	.
29 STEUBEN	59105	00645	IR 645 (DYERS BAY) S/O IR 1577 (STEVENS)	C	II	.	.	1030	.	.
29 STEUBEN	82604	00649	IR 649 (ROGERS POINT RD) SE/O IR 1105	C	II	.	.	350	.	.
29 STEUBEN	86003	00651	IR 651 E/O IR 653 @ BR# 1175	C	I	.	.	30	.	.
29 STEUBEN	82504	00653	IR 653 (SMITHVILLE RD) SE/O US 1	C	I+II	.	.	300	.	.
29 STEUBEN	82508	00653	IR 653 (SMITHVILLE RD) NW/O US 1	C	I	.	.	490	.	.
29 STEUBEN	50706	00670	IR 670(PINKHAM BAY) SW/O IR 641@CAUSEWAY	C	II	.	.	280	.	.
29 STEUBEN	33304	01570	IR 1570 SE/O US 1 @T07 SD BPP TL@BR#2944	C	I+II	.	.	160	.	.
29 STEUBEN	82306	01570	IR 1570 (VILLAGE RD) SW/O US 1	C	I+II	.	.	480	.	.
29 TALMADGE	35306	00818	IR 818 SW/O IR 831	C	I	.	.	110	.	.
29 TALMADGE	35308	00831	IR 831 NW/O IR 818	C	I	.	.	100	.	.
29 TOPSFIELD	30601	0001X	US 1 N/O SR 6	C	I	.	.	1190	.	.
29 TOPSFIELD	30605	0001X	US 1 S/O SR 6	C	I	.	.	2070	.	.
29 TOPSFIELD	81001	0001X	US 1 N/O IR 816	C	I	.	.	1070	.	.
29 TOPSFIELD	30603	0006X	SR 6 E/O US 1	C	II	.	.	640	.	.
29 TOPSFIELD	30607	0006X	SR 6 W/O US 1	C	II	.	.	1450	.	.
29 TRECOTT TWP	45208	00327	IR 327 (OLD CROSS) NW/O IR 386 @ BR#3866	C	I	.	.	60	.	.

County **2006 Maine Transportation Count Book**

Washington		STATION	ROAD	LOCATION	TYPE	GROUP	AADT02	AADT03	AADT04	AADT05	AADT06
TOWN											
29	TRESCOTT TWP	45308	00331	IR 331 (CROWS NECK RD) NW/O IR 333	C	III	.	.	60	.	.
29	TRESCOTT TWP	45101	00333	IR 333 (TIMBER COVE RD) N/O SR 189	C	III	.	.	110	.	.
29	TRESCOTT TWP	45004	00386	IR 386 (WILCOX RD) SE/O SR 189	C	I	.	.	190	.	.
29	TRESCOTT TWP	45103	0189X	SR 189 E/O IR 333 (TIMBER COVE RD)	C	II	.	.	2010	.	.
29	TRESCOTT TWP	45107	0189X	SR 189 W/O IR 333 (TIMBER COVE RD)	C	II	.	.	2040	.	.
29	TRESCOTT TWP	45402	0191X	SR 191 NE/O IR 1606(HAYCOCK HBR)@BR#3746	C	II	.	.	250	.	.
29	TWP 05 ND AND STRIP N	38500	01309	(PW) IR 1309 (MILFORD RD) @T06 ND BPP TL	C	III	.	.	20	.	.
29	TWP 05 ND AND STRIP N	38607	01309	(PW) IR 1309 (MILFORD RD) W/O IR 1915	C	III	.	.	20	.	.
29	TWP 08 R 03 NBPP	65700	0169X	SR 169 @ T8 R4 TL @ LITTLE MEADOW BK	C	II	.	.	280	.	.
29	TWP 18 ED	36701	00315	IR 315 N/O SR 191	C	II	.	.	30	.	.
29	TWP 18 ED	36702	0191X	SR 191 NE/O IR 315	C	ATR80801	.	.	1160	.	.
29	TWP 19 ED	44500	00315	IR 315 @ NORTHERN STREAM BR# 1162	C	II	.	.	50	.	.
29	TWP 27 ED	37903	00876	IR 876 E/O IR 878	C	II	.	.	80	.	.
29	TWP 27 ED	37905	00878	IR 878 S/O IR 876	C	II	.	.	30	.	.
29	TWP 30 MD	32600	0009X	SR 9 @ BR# 5438	A		2490
29	VANCEBORO	33606	0006X	SR 6 SW/O IR 860	C	II	.	.	450	.	.
29	VANCEBORO	33701	0006X	SR 6 N/O IR 864	C	II	.	.	510	.	.
29	VANCEBORO	66501	0006X	SR 6 N/O IR 821 (SALMON BROOK RD)	C	II	.	.	560	.	.
29	VANCEBORO	66507	0006X	SR 6 W/O IR 821 (SALMON BROOK RD)	C	II	.	.	660	.	.
29	VANCEBORO	67205	0006X	SR 6 (LAMBERT RD) S/O IR 866 (4TH ST)	C	II	.	.	640	.	.
29	VANCEBORO	35105	00821	IR 821 S/O IR 862 (CHURCH ST)	C	I	.	.	70	.	.
29	VANCEBORO	66505	00821	IR 821 (SALMON BROOK RD) S/O SR 6	C	I	.	.	100	.	.
29	VANCEBORO	34205	00862	IR 862 S/O IR 863	C	I	.	.	120	.	.
29	VANCEBORO	34405	00862	IR 862 S/O IR 865 (THIRD ST)	C	I	.	.	140	.	.
29	VANCEBORO	35107	00862	IR 862 (CHURCH ST) W/O IR 821	C	I	.	.	20	.	.
29	VANCEBORO	34203	00863	IR 863 E/O IR 862	C	I	.	.	50	.	.
29	VANCEBORO	33708	00864	IR 864 NW/O IR 1076 (SECOND AVE)	C	I	.	.	40	.	.
29	VANCEBORO	34601	00864	IR 864 (SHAW RD) N/O IR 865 (THIRD ST)	C	I	.	.	80	.	.
29	VANCEBORO	34603	00865	IR 865 (THIRD ST) E/O IR 864 (SHAW RD)	C	I	.	.	60	.	.
29	VANCEBORO	34607	00865	IR 865 (THIRD ST) W/O IR 864 (SHAW RD)	C	I	.	.	120	.	.
29	VANCEBORO	67207	00866	IR 866 W/O SR 6	C	I	.	.	80	.	.
29	VANCEBORO	67201	00867	IR 867 N/O SR 6	C	I	.	.	110	.	.
29	VANCEBORO	33707	01076	IR 1076 (SECOND AVE) W/O IR 864	C	I	.	.	10	.	.
29	WAITE	31004	0001X	US 1 SE/O IR 820 (BINGO RD)	C	I	.	.	2150	.	.

County

2006 Maine Transportation Count Book

Washington

TOWN	STATION	ROAD	LOCATION	TYPE	GROUP	AADT02	AADT03	AADT04	AADT05	AADT06
29 WAITE	31104	0001X	US 1 SE/O IR 818	C	I	.	.	2120	.	.
29 WAITE	31002	00820	IR 820 (BINGO RD) NE/O US 1	C	I	.	.	160	.	.
29 WESLEY	32402	0009X	SR 9 NE/O SR 192	C	ATR30702	.	.	3070	.	.
29 WESLEY	32407	0009X	SR 9 W/O SR 192	C	ATR30702	.	.	3370	.	.
29 WESLEY	32405	0192X	SR 192 S/O SR 9	C	II	.	.	680	.	.
29 WHITING	36502	0001X	US 1 NE/O SR 189	C	ATR80803	.	.	1830	.	.
29 WHITING	36507	0001X	US 1 W/O SR 189	C	ATR80803	.	.	2140	.	.
29 WHITING	51303	0001X	US 1 E/O IR 507 (HALLS MILL RD)	C	ATR80803	.	.	2150	.	.
29 WHITING	51301	00507	IR 507 (HALLS MILL RD) N/O US 1	C	II	.	.	170	.	.
29 WHITING	51402	00507	IR 507(HALLS MILL) NE/O IR 510 @ BR#1169	C	II	.	.	30	.	.
29 WHITING	36505	0189X	SR 189 S/O US 1 @ BR# 2091	C	II	.	.	2220	.	.
29 WHITNEYVILLE	34803	0001A	US 1A E/O IR 940	C	I+II	.	.	1060	.	.
29 WHITNEYVILLE	51201	0001A	US 1A N/O IR 941 @ BR# 1514	C	II	.	.	1310	.	.
29 WHITNEYVILLE	51204	0001A	US 1A SE/O IR 941 (N JCT)	C	II	.	.	1130	.	.
29 WHITNEYVILLE	71702	0001A	US 1A NE/O IR 941	C	II	.	.	1000	.	.
29 WHITNEYVILLE	71708	00941	IR 941 NW/O US 1A	C	I	.	.	30	.	.