

Traffic Volume Counts 2006 Annual Report



MaineDOT

**Data collected and published by the
State of Maine**

**Department of Transportation
Traffic Engineering Division**

**In cooperation with the
United States Department of Transportation
Federal Highway Administration**

TABLE of CONTENTS

Forward

Continuous Count Program

24 Hour Traffic Data Collection Program

Description of Headings, Symbols, and Abbreviations

Map of State Count Zones

Graph of 2006 Weekly Group Mean Factors

List of 2006 Weekly Group Mean Factors

List of 2006 Weekly Group Mean Factors as a Percent of AADT

Traffic Volume Counts by County, Town, and Route

FOREWORD

The Department of Transportation, Traffic Engineering Division, and Traffic Monitoring Section is responsible for the collection of all types of traffic data and maintenance of a statewide traffic volume database. The reduction and reporting of traffic volumes and vehicle classification data are accomplished through two types of count programs. They are as follows:

CONTINUOUS COUNT PROGRAM

Traffic volumes are monitored on a continuous year round basis at forty-three permanent recorder sites located on major highways throughout the State. These hourly counts are collected to produce an average weekday figure, a weekly average day, a monthly average day, and a monthly average weekday. This information is compiled to develop an Annual Average Daily Traffic (AADT) figure for each location. The AADT is computed from the average of the weekly average day totals for the year.

The increasing demand to determine the types of vehicles (e.g. passenger cars, single-unit trucks, and semi's) traveling Maine's highways has prompted the development of a Continuous Classification Program. Currently, the department has eleven locations along routed highways that collect data based on thirteen categories as defined by the Federal Highway Administration. An AADT is computed based on the total volume as well as summary data for individual vehicle types. Future plans include the installation of additional sites statewide over the next several years.

24 HOUR TRAFFIC DATA COLLECTION PROGRAM

Between April 1st and November 15th of each year, 24 hour traffic counts (i.e., coverage counts) are gathered to monitor traffic flow and changes in traffic patterns. These counts are generally taken at intersections with major routes and/or other significant roads, Compact Urban Lines (CUL), or Town Lines (TL), or in coordination with ongoing projects or special traffic studies for the Department.

Additionally, 24-hour vehicle classification counts are performed in conjunction with the coverage counts to provide a comprehensive view of traffic along the routed highways.

The State is divided into three count zones:

ZONE I : Southwestern Maine to western Penobscot Bay region. This zone includes all of York, Cumberland, Sagadahoc, Lincoln, Knox, and Waldo counties, Oxford county from Albany Twp/Waterboro West & Oxford, Otisfield, as well as Poland, and Mechanic Falls in Androscoggin county.

ZONE II : Western/Central Maine and eastern Penobscot Bay region. This zone includes all of Androscoggin except Poland, and Mechanic Falls, Franklin, Kennebec counties, the remainder of Oxford county, Somerset county from Bingham south plus between Flagstaff Lake area and Kennebec River, southern Penobscot county, and western Hancock county.

ZONE III : Northern and eastern Maine. This zone includes all of Aroostook, Piscataquis, Washington counties, northern and southeastern Hancock county, Penobscot county from Lagrange north, and the remainder of Somerset county.

These zones are counted on a five year cycle: Zones I and II are counted twice and Zone III once during each five year period. The coverage count program also consists of the “Special Counts” taken each year to satisfy Departmental needs, local requests, and Federal requirements. These include the annual collection of data for the State’s four urbanized areas (BACTS, KACTS, ATRC, and PACTS), Interstate System counts, and data collected from the various traffic studies conducted throughout the year. The 2006 Program included 4361 counts accomplished.

Once the AADT’s have been computed for all of the permanent recorder locations, weekly factors for each station are computed by dividing the AADT by each average weekly figure. Those stations which exhibit similar traffic patterns are assembled and placed into one of three groups:

URBAN : Roadways which carry commuter traffic and exhibit little seasonal change in traffic volumes.

ARTERIAL : Roadways which carry commuter traffic but exhibit moderate seasonal changes in traffic volumes.

RECREATIONAL : Roadways which are heavily influenced by seasonal traffic.

Within each of the three groups, a factor for each week is computed by averaging the weekly factors from each station within the group.

The 2006 Weekly Group Mean Factors were developed by averaging the Weekly Group Mean Factor for 2003, 2004 and 2005. The following pages show the graph of the 2006 Weekly Group Mean Factors, a list of these factors, and the 2006 Weekly Group Mean Factor as a percent of the AADT.

The 24-hour raw data may now be grouped and assigned a factor to produce an AADT. Growth factors for expanding traffic in uncounted zones are developed utilizing data from the permanent recorders and comparing it to the data from the previous year.

The updated AADT's are entered into the Maine Department of Transportation's database to be used by various Departmental employees.

DESCRIPTION of HEADINGS, SYMBOLS, AND ABBREVIATIONS

The following is a description of the column headings, symbols, and abbreviations used for the Coverage Count Section.

TOWN The town in which a count was taken

ROUTE The road or highway on which the count was taken.

Non-Interstate Highways and Roads

---- X indicates a Routed Highway

0196X = SR 196 0001X = US Route 1

---- A or --- B indicates an Alternate Routed Highway

0001A = US Route 1A 0009B = SR 9B

---- C indicates a Business Route

0001C = Business US Route 1, 1A, or 1B

0025C = Business SR 25

Just a number with no letter OR no numbers or letters indicates a non-routed highway

= Pine Hill Road 00001 = Hubbard Road

01414 = IR 1414 00991 = IR 991 (Biddeford Road)

Interstate System

---- X indicates Northbound or Eastbound

0095X = I-95 Northbound

0395X = I-395 Eastbound

---- S indicates Southbound

0095S = I-95 Southbound

---- W indicates Westbound

0395W = I-395 Westbound

LOCATION

A description of where the count was taken.

APP = Approach

ART = Arterial

AVE = Avenue

BK = Brook

BLVD = Boulevard

BR = Bridge

CIR = Circle

CL = County Line

CNR = Corner

CONN = Connector

CTR = Center

CUL = Compact Urban Line

CWY = Cause way

CV = Cove

DR = Drive

EB = Eastbound

ENT = Entrance

FL=Fall

FLS=Falls

FT = Fort

HTS = Heights

HWY = Highway

INT'L = International

IR = Inventory Road

LG = Long

LK = Lake

LN = Lane

LWR = Lower

MEM = Memorial

MT = Mount

MTN = Mountain

NB = Northbound

NH = New Hampshire

OW = One Way

PD = Pond

PK = Park

PKWY = Park Way

PL = Place

PT = Point

PW = Private Way

PZ = Plaza

RD = Road

RDG = Ridge

RMP = Ramp

RR = Railroad

RV = River

SB = Southbound

SL = State Line

SQ = Square

SR = State Route

ST = Street

STA = Station

STR = Stream

TER = Terrace

TL = Town Line

TPK = Turnpike

TR = Trail

UPR = Upper

US = United States Route

WB = Westbound

N/O, NE/O, E/O, etc. = North of, Northeast of, East of, etc.

TYPE

Category for each count taken.

- A Permanent Recorder Count
- B BACTS Count
- C Coverage Count
- I Interstate Count
- K KACTS Count
- L ATRC Count (Formerly LACTS)
- M Municipal, Town, Regional Count
- P PACTS Count
- S Special Count
- T Turning Movement Count
- Z Speed Count

GROUP

The factor group assigned to the location.

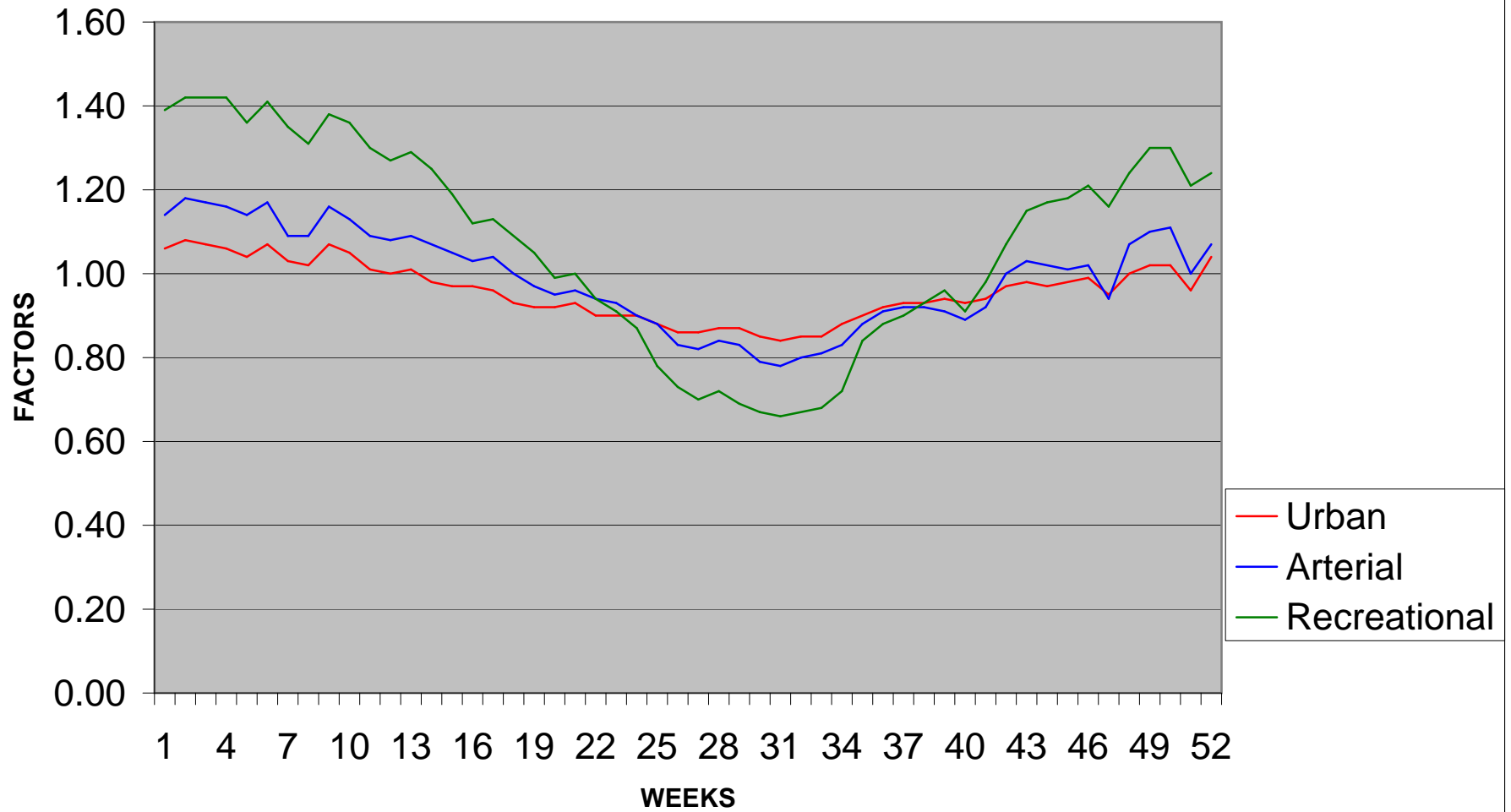
- I Urban Group II Arterial Group
- III Recreational Group ATR Permanent Recorder Controlled Group

AADT

Annual Average Daily Traffic

2006 WEEKLY GROUP FACTORS

AVERAGE: 2003, 2004, 2005



2006
WEEKLY GROUP MEAN FACTORS
AVERAGE: 2003, 2004, 2005

			Month	Urban	Arterial	recreation	Group	Group	Group	Year
Month	Start Date	Dates	Week #	Group I	Group II	Group III	I + II	II + III	I + III	Week #
Jan/Feb	(1)	2,3,4,5,6	1	1.06	1.14	1.39	1.10	1.27	1.23	1
	(8)	9,10,11,1	2	1.08	1.18	1.42	1.13	1.30	1.25	2
	(15)	16,17,18	3	1.07	1.17	1.42	1.12	1.30	1.25	3
	(22)	23,24,25	4	1.06	1.16	1.42	1.11	1.29	1.24	4
	(29)	30,31,1,2	5	1.04	1.14	1.36	1.09	1.25	1.20	5
Feb/Mar	(5)	6,7,8,9,1	1	1.07	1.17	1.41	1.12	1.29	1.24	6
	(12)	13,14,15	2	1.03	1.09	1.35	1.06	1.22	1.19	7
	(19)	20,21,22	3	1.02	1.09	1.31	1.06	1.20	1.17	8
	(26)	27,28,1,2	4	1.07	1.16	1.38	1.12	1.27	1.23	9
March	(5)	6,7,8,9,1	1	1.05	1.13	1.36	1.09	1.25	1.21	10
	(12)	13,14,15	2	1.01	1.09	1.30	1.05	1.20	1.16	11
	(19)	20,21,22	3	1.00	1.08	1.27	1.04	1.18	1.14	12
	(26)	27,28,29	4	1.01	1.09	1.29	1.05	1.19	1.15	13
April/May	(2)	3,4,5,6,7	1	0.98	1.07	1.25	1.03	1.16	1.12	14
	(9)	10,11,12	2	0.97	1.05	1.19	1.01	1.12	1.08	15
	(16)	17,18,19	3	0.97	1.03	1.12	1.00	1.08	1.05	16
	(23)	24,25,26	4	0.96	1.04	1.13	1.00	1.09	1.05	17
	(30)	1,2,3,4,5	5	0.93	1.00	1.09	0.97	1.05	1.01	18
May/Jun	(7)	8,9,10,11	1	0.92	0.97	1.05	0.95	1.01	0.99	19
	(14)	15,16,17	2	0.92	0.95	0.99	0.94	0.97	0.96	20
	(21)	22,23,24	3	0.93	0.96	1.00	0.95	0.98	0.97	21
	(28)	29,30,31	4	0.90	0.94	0.94	0.92	0.94	0.92	22
June	(4)	5,6,7,8,9	1	0.90	0.93	0.91	0.92	0.92	0.91	23

	(11)	12,13,14	2	0.90	0.90	0.87	0.90	0.89	0.89	24
	(18)	19,20,21	3	0.88	0.88	0.78	0.88	0.83	0.83	25
	(25)	26,27,28	4	0.86	0.83	0.73	0.85	0.78	0.80	26
Jul/Aug	(2)	3,4,5,6,7	1	0.86	0.82	0.70	0.84	0.76	0.78	27
	(9)	10,11,12	2	0.87	0.84	0.72	0.86	0.78	0.80	28
	(16)	17,18,19	3	0.87	0.83	0.69	0.85	0.76	0.78	29
	(23)	24,25,26	4	0.85	0.79	0.67	0.82	0.73	0.76	30
	(30)	31,1,2,3,	5	0.84	0.78	0.66	0.81	0.72	0.75	31
Aug/Sep	(6)	7,8,9,10,	1	0.85	0.80	0.67	0.83	0.74	0.76	32
	(13)	14,15,16	2	0.85	0.81	0.68	0.83	0.75	0.77	33
	(20)	21,22,23	3	0.88	0.83	0.72	0.86	0.78	0.80	34
	(27)	28,29,30	4	0.90	0.88	0.84	0.89	0.86	0.87	35
Septemb	(3)	4,5,6,7,8	1	0.92	0.91	0.88	0.92	0.90	0.90	36
	(10)	11,12,13	2	0.93	0.92	0.90	0.93	0.91	0.92	37
	(17)	18,19,20	3	0.93	0.92	0.93	0.93	0.93	0.93	38
	(24)	25,26,27	4	0.94	0.91	0.96	0.93	0.94	0.95	39
Oct/Nov	(1)	2,3,4,5,6	1	0.93	0.89	0.91	0.91	0.90	0.92	40
	(8)	9,10,11,1	2	0.94	0.92	0.98	0.93	0.95	0.96	41
	(15)	16,17,18	3	0.97	1.00	1.07	0.99	1.04	1.02	42
	(22)	23,24,25	4	0.98	1.03	1.15	1.01	1.09	1.07	43
	(29)	30,31,1,2	5	0.97	1.02	1.17	1.00	1.10	1.07	44
Nov/Dec	(5)	6,7,8,9,1	1	0.98	1.01	1.18	1.00	1.10	1.08	45
	(12)	13,14,15	2	0.99	1.02	1.21	1.01	1.12	1.10	46
	(19)	20,21,22	3	0.95	0.94	1.16	0.95	1.05	1.06	47
	(26)	27,28,29	4	1.00	1.07	1.24	1.04	1.16	1.12	48
Decembe	(3)	4,5,6,7,8	1	1.02	1.10	1.30	1.06	1.20	1.16	49
	(10)	11,12,13	2	1.02	1.11	1.30	1.07	1.21	1.16	50
	(17)	18,19,20	3	0.96	1.00	1.21	0.98	1.11	1.09	51
	(24)	25,26,27	4	1.04	1.07	1.24	1.06	1.16	1.14	52

2006
WEEKLY GROUP MEAN FACTORS
AVERAGE: 2003, 2004, 2005
AS PERCENT OF AADT

			Month	Urban	Arterial	recreation	Group	Group	Group	Year
Month	Start Date	Dates	Week #	Group I	Group II	Group III	I + II	II + III	I + III	Week #
Jan/Feb	(1)	2,3,4,5,6	1	94.34	87.72	71.94	90.91	78.74	81.30	1
	(8)	9,10,11,1	2	92.59	84.75	70.42	88.50	76.92	80.00	2
	(15)	16,17,18	3	93.46	85.47	70.42	89.29	76.92	80.00	3
	(22)	23,24,25	4	94.34	86.21	70.42	90.09	77.52	80.65	4
	(29)	30,31,1,2	5	96.15	87.72	73.53	91.74	80.00	83.33	5
Feb/Mar	(5)	6,7,8,9,1	1	93.46	85.47	70.92	89.29	77.52	80.65	6
	(12)	13,14,15	2	97.09	91.74	74.07	94.34	81.97	84.03	7
	(19)	20,21,22	3	98.04	91.74	76.34	94.34	83.33	85.47	8
	(26)	27,28,1,2	4	93.46	86.21	72.46	89.29	78.74	81.30	9
March	(5)	6,7,8,9,1	1	95.24	88.50	73.53	91.74	80.00	82.64	10
	(12)	13,14,15	2	99.01	91.74	76.92	95.24	83.33	86.21	11
	(19)	20,21,22	3	100.00	92.59	78.74	96.15	84.75	87.72	12
	(26)	27,28,29	4	99.01	91.74	77.52	95.24	84.03	86.96	13
April/May	(2)	3,4,5,6,7	1	102.04	93.46	80.00	97.09	86.21	89.29	14
	(9)	10,11,12	2	103.09	95.24	84.03	99.01	89.29	92.59	15
	(16)	17,18,19	3	103.09	97.09	89.29	100.00	92.59	95.24	16
	(23)	24,25,26	4	104.17	96.15	88.50	100.00	91.74	95.24	17
	(30)	1,2,3,4,5	5	107.53	100.00	91.74	103.09	95.24	99.01	18
May/June	(7)	8,9,10,11	1	108.70	103.09	95.24	105.26	99.01	101.01	19
	(14)	15,16,17	2	108.70	105.26	101.01	106.38	103.09	104.17	20
	(21)	22,23,24	3	107.53	104.17	100.00	105.26	102.04	103.09	21
	(28)	29,30,31	4	111.11	106.38	106.38	108.70	106.38	108.70	22
June	(4)	5,6,7,8,9	1	111.11	107.53	109.89	108.70	108.70	109.89	23

	(11)	12,13,14	2	111.11	111.11	114.94	111.11	112.36	112.36	24
	(18)	19,20,21	3	113.64	113.64	128.21	113.64	120.48	120.48	25
	(25)	26,27,28	4	116.28	120.48	136.99	117.65	128.21	125.00	26
Jul/Aug	(2)	3,4,5,6,7	1	116.28	121.95	142.86	119.05	131.58	128.21	27
	(9)	10,11,12	2	114.94	119.05	138.89	116.28	128.21	125.00	28
	(16)	17,18,19	3	114.94	120.48	144.93	117.65	131.58	128.21	29
	(23)	24,25,26	4	117.65	126.58	149.25	121.95	136.99	131.58	30
	(30)	31,1,2,3,	5	119.05	128.21	151.52	123.46	138.89	133.33	31
Aug/Sep	(6)	7,8,9,10,	1	117.65	125.00	149.25	120.48	135.14	131.58	32
	(13)	14,15,16	2	117.65	123.46	147.06	120.48	133.33	129.87	33
	(20)	21,22,23	3	113.64	120.48	138.89	116.28	128.21	125.00	34
	(27)	28,29,30	4	111.11	113.64	119.05	112.36	116.28	114.94	35
Septemb	(3)	4,5,6,7,8	1	108.70	109.89	113.64	108.70	111.11	111.11	36
	(10)	11,12,13	2	107.53	108.70	111.11	107.53	109.89	108.70	37
	(17)	18,19,20	3	107.53	108.70	107.53	107.53	107.53	107.53	38
	(24)	25,26,27	4	106.38	109.89	104.17	107.53	106.38	105.26	39
Oct/Nov	(1)	2,3,4,5,6	1	107.53	112.36	109.89	109.89	111.11	108.70	40
	(8)	9,10,11,1	2	106.38	108.70	102.04	107.53	105.26	104.17	41
	(15)	16,17,18	3	103.09	100.00	93.46	101.01	96.15	98.04	42
	(22)	23,24,25	4	102.04	97.09	86.96	99.01	91.74	93.46	43
	(29)	30,31,1,2	5	103.09	98.04	85.47	100.00	90.91	93.46	44
Nov/Dec	(5)	6,7,8,9,1	1	102.04	99.01	84.75	100.00	90.91	92.59	45
	(12)	13,14,15	2	101.01	98.04	82.64	99.01	89.29	90.91	46
	(19)	20,21,22	3	105.26	106.38	86.21	105.26	95.24	94.34	47
	(26)	27,28,29	4	100.00	93.46	80.65	96.15	86.21	89.29	48
Decembe	(3)	4,5,6,7,8	1	98.04	90.91	76.92	94.34	83.33	86.21	49
	(10)	11,12,13	2	98.04	90.09	76.92	93.46	82.64	86.21	50
	(17)	18,19,20	3	104.17	100.00	82.64	102.04	90.09	91.74	51
	(24)	25,26,27	4	96.15	93.46	80.65	94.34	86.21	87.72	52

2006 Maine Transportation Count Book

Penobscot

	TOWN	STATION	ROAD	LOCATION	TYPE	GROUP	AADT02	AADT03	AADT04	AADT05	AADT06
19	ALTON	32400	0016X	SR 16 @ LAGRANGE TL	C	I	.	2110	1850	.	1740
19	ALTON	46604	0016X	SR 16 SE/O IR 582 (ARGYLE RD)	C	I	.	2880	.	.	2250
19	ALTON	64108	0016X	SR 16 NW/O I95 (SB) ONRAMP @ OLD TOWN TL	C	I	.	3330	.	.	2970
19	ALTON	52707	00584	IR 584 (TANNERY RD) W/O SR 16	C	I	.	150	.	.	160
19	ARGYLE TWP	46505	0116X	SR 116 S/O IR 582 (ALTON RD)	C	I	.	360	.	.	330
19	ARGYLE TWP	63900	0116X	SR 116 @ EDINBURG TL	C	I	.	330	210	.	240
19	BANGOR	22202		(PW) TO COLLEGE CIRCLE NE/O HUSSON AVE	T	I	.	.	2350	.	.
19	BANGOR	22208		(PW) COLLEGE CIR ENT NW/O HUSSON AVE	T	I	.	.	1360	.	.
19	BANGOR	22218		(PW) COLLEGE CIR EXIT NW/O HUSSON AVE	T	I	.	.	1410	.	.
19	BANGOR	00200	0001A	US 1A/SR 9 (J CHAMBERLAIN BR) @ BREWER TL	C	I	15220	16770	17450	18430	14730
19	BANGOR	01300	0001A	US 1A/SR 9 (MAIN ST) @ HAMPDEN TL	C	I	.	.	9430	.	9170
19	BANGOR	01502	0001A	US 1A/SR 9 (MAIN ST) NE/O FARM RD	S	I	.	13180	.	.	13120
19	BANGOR	01506	0001A	US 1A/SR 9 (MAIN ST) SW/O FARM RD	C	I	.	11790	.	.	11040
19	BANGOR	01802	0001A	US 1A/SR 9 (SUMMER ST) NE/O RAILROAD AVE	B	I	.	9690	.	9980	8950
19	BANGOR	01902	0001A	BUS 1A (MAIN ST) NE/O CEDAR ST	C	I	.	9000	.	.	7910
19	BANGOR	01906	0001A	BUS 1A (MAIN ST) SW/O CEDAR ST	C	I	10250
19	BANGOR	00100	0001C	BUS 1A (OLD PENEBSCOT BR) @ BREWER TL	C	I	23500	21930	23290	23220	21290
19	BANGOR	02002	0001C	BUS 1A (MAIN ST) NE/O UNION ST	C	I	.	11330	.	.	9270
19	BANGOR	02201	0001C	BUS 1A (EXCHANGE ST) N/O WASHINGTON ST	C	I	.	5670	.	.	4690
19	BANGOR	02203	0001C	BUS 1A (WASHINGTON) E/O BUS 1A(EXCHANGE)	C	I	7340
19	BANGOR	03705	0001C	BUS 1A (EXCHANGE ST) S/O US 2 (STATE ST)	C	I	.	5550	.	.	4900
19	BANGOR	04302	0001C	BUS 1A/US 2 (HAMMOND) NE/O BUS1A(CENTRAL	B	I	12300
19	BANGOR	04406	0001C	BUS 1A/US 202 (MAIN ST) SW/O W MARKET SQ	C	I	.	10710	.	10570	9770
19	BANGOR	00402	0002X	US 2 (STATE ST) E/O BROWN ST	C	I	11040
19	BANGOR	00703	0002X	US 2/SR 100 (HAMMOND) E/O FOURTEENTH ST	C	I	.	11660	.	.	10400
19	BANGOR	02907	0002X	US 2 (STATE ST) W/O HOSPITAL DR	C	I	.	15500	.	.	.
19	BANGOR	03002	0002X	US 2 (STATE ST) NE/O HOGAN RD	C	I	.	4930	.	.	4910
19	BANGOR	03006	0002X	US 2 (STATE ST) SW/O HOGAN RD	B	I	.	14790	.	.	13970
19	BANGOR	03106	0002X	US 2 (STATE ST) SW/O FRUIT ST (NB)	C	I	8700
19	BANGOR	03303	0002X	US 2 (STATE ST) E/O BIRCH ST	B	I	.	13620	.	.	9650
19	BANGOR	03403	0002X	US 2 (STATE ST) E/O FOREST AVE	C	I	.	12310	.	.	.
19	BANGOR	03703	0002X	US 2 (STATE ST) E/O BUS 1A (EXCHANGE ST)	C	I	.	12070	.	.	11240
19	BANGOR	04407	0002X	US 2 (HAMMOND) W/O BUS 1A/US 202 (MAIN)	C	I	.	7940	.	7980	6400
19	BANGOR	04907	0002X	US 2/SR 100 (HAMMOND) W/O SR 222 (UNION)	C	I	.	7240	.	.	6790

2006 Maine Transportation Count Book

Penobscot

	TOWN	STATION	ROAD	LOCATION	TYPE	GROUP	AADT02	AADT03	AADT04	AADT05	AADT06
19	BANGOR	06107	0002X	US 2/SR 100(INDUSTRIAL SPUR)W/O ODLIN RD	C	I	16320	16820	20350	.	19650
19	BANGOR	06302	0002X	US2/SR100(ODLIN) NE/O US2/SR100(INDSPUR)	C	I	10580
19	BANGOR	06603	0002X	US2/SR100(HAMMOND) E/O US2/SR100 (ODLIN)	C	I	.	.	11110	.	10470
19	BANGOR	06605	0002X	US2/SR100 (ODLIN) S/O US2/SR100(HAMMOND)	C	I	.	14720	.	.	14390
19	BANGOR	08902	0002X	US 2 (STATE ST) NE/O BROADWAY	C	I	.	13920	13940	.	.
19	BANGOR	14803	0002X	US 2 (STATE ST) E/O HANCOCK ST	C	I	17080
19	BANGOR	14807	0002X	US 2 (STATE ST) W/O HANCOCK ST	C	I	.	10310	.	.	.
19	BANGOR	16203	0002X	US 2 (OUTER HAMMOND) E/O N HILDRETH ST	C	I	.	11920	.	.	11310
19	BANGOR	17100	0002X	US 2/SR 100 (OUTER HAMMOND) @ HERMON TL	C	I	.	9960	12040	10960	10380
19	BANGOR	19603	0002X	US 2/SR 100(HAMMOND ST) E/O NORWAY RD	C	I	.	13670	.	.	12180
19	BANGOR	19807	0002X	US 2 (HAMMOND ST) W/O VERNON ST	C	I	.	10420	.	.	10090
19	BANGOR	19903	0002X	US 2 (STATE ST) E/O ESSEX ST	C	I	.	12990	.	.	11670
19	BANGOR	09204	0015B	BROADWAY SE/O FRENCH ST	C	I	.	13520	.	.	.
19	BANGOR	09305	0015B	BROADWAY S/O NO PARK ST	M	I	12190
19	BANGOR	09401	0015B	BROADWAY N/O CUMBERLAND ST	C	I	.	12140	.	.	11810
19	BANGOR	17304	0015B	BROADWAY SE/O CENTER ST/I-95 NB RAMPS	C	I	13700
19	BANGOR	08004	0015X	SR 15 (BROADWAY) SE/O KENDUSKEAG AVE	C	I	.	11120	.	.	.
19	BANGOR	08704	0015X	SR 15 (BROADWAY) SE/O BURLEIGH RD	B	I	15840	.	.	.	14980
19	BANGOR	08804	0015X	SR 15 (BROADWAY) SE/O FALVEY ST	B	I	.	.	.	25320	25140
19	BANGOR	08901	0015X	BROADWAY N/O US 2 (STATE ST)	C	I	.	13160	14200	.	12900
19	BANGOR	19104	0015X	SR 15 (BROADWAY) SE/O SR 221 @BR# 2546	C	I	.	11860	.	.	.
19	BANGOR	19108	0015X	SR 15 (BROADWAY) NW/O SR 221 @BR# 2771	C	I	9000
19	BANGOR	22300	0015X	SR 15 (BROADWAY) @ GLENBURN TL	C	I	.	.	8820	8820	.
19	BANGOR	51402	0095S	I-95 (SB) N/O ON RAMP FROM HOGAN RD	I	I	.	10750	.	11290	.
19	BANGOR	51404	0095S	I-95 (SB) N/O OFF RAMP TO HOGAN RD	I	I	.	14920	.	15620	.
19	BANGOR	51506	0095S	I-95 (SB) ON RAMP FROM BROADWAY	I	I	.	6030	.	5570	.
19	BANGOR	51508	0095S	I-95 (SB) OFF RAMP TO BROADWAY	I	I	.	4410	.	5040	.
19	BANGOR	51510	0095S	I-95 (SB) N/O ON RAMP FROM STILLWATER AV	I	I	.	17660	.	18960	.
19	BANGOR	51512	0095S	I-95 (SB) N/O OFF RAMP TO STILLWATER AVE	I	I	.	19400	.	20780	.
19	BANGOR	51606	0095S	I-95 (SB) OFF RAMP TO UNION ST	I	I	.	6100	.	6350	.
19	BANGOR	51608	0095S	I-95 (SB) ON RAMP FROM OHIO ST	I	I	.	2250	.	2100	.
19	BANGOR	51702	0095S	I-95 (SB) N/O ON RAMP FROM HAMMOND (SB)	I	I	.	17470	.	19110	.
19	BANGOR	51704	0095S	I-95 (SB) N/O ON RAMP FROM HAMMOND (NB)	I	I	.	17170	.	17810	.
19	BANGOR	51706	0095S	I-95 (SB) N/O OFF RAMP TO HAMMOND ST	I	I	.	19740	.	20150	.

2006 Maine Transportation Count Book

County

Penobscot

TOWN		STATION	ROAD	LOCATION	TYPE	GROUP	AADT02	AADT03	AADT04	AADT05	AADT06
19	BANGOR	51802	0095S	I-95 (SB) N/O ON RAMP FROM I-395 (EB)	I	I	.	11850	.	11800	.
19	BANGOR	51804	0095S	I-95 (SB) N/O OFF RAMP TO I-395 (EB)	I	I	.	18810	.	19880	.
19	BANGOR	51806	0095S	I-95 (SB) N/O ON RAMP FROM I-395 (WB)	I	I	.	16590	.	16760	.
19	BANGOR	51808	0095S	I-95 (SB) N/O OFF RAMP TO I-395 (WB)	I	I	.	18850	.	20270	.
19	BANGOR	51810	0095S	I-95 SB ON RAMP FROM I-395 (EB)	I	I	.	.	1310	.	1310
19	BANGOR	51816	0095S	I-95 SB OFF RAMP TO I-395 (WB)	I	I	3540	.	2990	.	2860
19	BANGOR	51401	0095X	I-95 (NB) N/O OFF RAMP TO HOGAN RD	I	I	.	10040	.	10450	.
19	BANGOR	51403	0095X	I-95 (NB) N/O ON RAMP FROM HOGAN RD	I	I	.	13920	.	14730	.
19	BANGOR	51505	0095X	I-95 (NB) OFF RAMP TO BROADWAY	I	I	.	4800	.	5520	.
19	BANGOR	51507	0095X	I-95 (NB) ON RAMP FROM BROADWAY	I	I	.	4640	.	4960	.
19	BANGOR	51511	0095X	I-95 (NB) N/O OFF RAMP TO STILLWATER AVE	I	I	.	16900	.	18910	.
19	BANGOR	51605	0095X	I-95 (NB) COLL-DISTRI FOR UNION/OHIO ST	I	I	.	6540	.	7000	.
19	BANGOR	51607	0095X	I-95 (NB) OFF RAMP TO OHIO ST	I	I	.	1360	.	960	.
19	BANGOR	51609	0095X	I-95 (NB) OFF RAMP TO OHIO ST/UNION ST	I	I	.	2460	.	2090	.
19	BANGOR	51701	0095X	I-95 (NB) N/O OFF RAMP TO HAMMOND ST	I	I	.	16740	.	17860	.
19	BANGOR	51703	0095X	I-95 (NB) N/O ON RAMP FROM HAMMOND ST	I	I	.	19020	.	20360	.
19	BANGOR	51801	0095X	I-95 (NB) N/O OFF RAMP TO I-395 (EB)	I	I	.	11090	.	10320	.
19	BANGOR	51803	0095X	I-95 (NB) N/O ON RAMP FROM I-395 (EB)	I	I	.	14570	.	15410	.
19	BANGOR	51805	0095X	I-95 (NB) N/O OFF RAMP TO I-395 (WB)	I	I	.	12340	.	12490	.
19	BANGOR	51807	0095X	I-95 (NB) N/O ON RAMP FROM I-395 (WB)	I	I	.	19080	.	20240	.
19	BANGOR	16116	0202S	US 202 (SB) SW/O I-395 RAMPS @HAMPDEN TL	B	I	5080
19	BANGOR	16106	0202X	US 202 (NB) SW/O I-395 RAMPS @HAMPDEN TL	B	I	.	10620	11030	.	4920
19	BANGOR	19101	0221X	SR 221 (HUDSON RD) N/O SR 15 (BROADWAY)	C	I	.	3810	3580	3170	3360
19	BANGOR	01008	0222X	SR 222 (UNION ST) NW/O UNION PL (PW)	C	I	8890
19	BANGOR	04908	0222X	SR 222 (UNION) NW/O US 2/SR 100(HAMMOND)	C	I	.	10250	10490	.	.
19	BANGOR	06504	0222X	SR 222 (UNION ST) SE/O FOURTEENTH ST	C	I	.	12660	.	.	11230
19	BANGOR	06704	0222X	SR 222 (UNION ST) SE/O VERMONT AVE	C	I	.	19710	.	20510	20400
19	BANGOR	06708	0222X	SR 222 (UNION ST) NW/O VERMONT AVE	C	I	19530	19170	.	.	21370
19	BANGOR	06804	0222X	SR 222 (UNION ST) SE/O GRIFFIN RD	C	I	14250
19	BANGOR	06808	0222X	SR 222 (UNION ST) NW/O GRIFFIN RD	C	I	.	9980	.	11200	11340
19	BANGOR	06908	0222X	SR 222 (UNION ST) NW/O DAVIS RD	C	I	.	8070	8300	.	9370
19	BANGOR	15604	0222X	SR 222 (UNION ST) SE/O CHARLES ST	B	I	.	10340	.	.	9140
19	BANGOR	19704	0222X	SR 222 (UNION ST) SE/O SEVENTEENTH ST	C	I	18540
19	BANGOR	30302	0395W	I-395 (WB) E/O ON RAMP FROM MAIN ST SB	I	I	12960	.	14410	.	14190

2006 Maine Transportation Count Book

Penobscot

TOWN		STATION	ROAD	LOCATION	TYPE	GROUP	AADT02	AADT03	AADT04	AADT05	AADT06
19	BANGOR	30304	0395W	I-395 (WB) W/O OFF RAMP TO MAIN ST	I	I	11670	.	12480	.	12720
19	BANGOR	30306	0395W	I-395 (WB) E/O OFF RAMP TO MAIN ST	I	I	14470	.	15670	.	15360
19	BANGOR	30308	0395W	I-395 WB ON RAMP FROM MAIN ST (SB)	I	I	.	.	3240	.	3150
19	BANGOR	30402	0395W	I-395 (WB) E/O ON RAMP FROM US 202	I	I	14660	.	14710	.	14480
19	BANGOR	30404	0395W	I-395 (WB) E/O OFF RAMP TO US 202	I	I	.	.	17650	.	17340
19	BANGOR	30406	0395W	I-395 WB OFF RAMP TO US 202	I	I	.	.	2940	.	2860
19	BANGOR	30502	0395W	I-395 (WB) E/O OFF RAMP TO I-95 (SB)	I	I	10300	.	12000	.	10600
19	BANGOR	30504	0395W	I-395 (WB) E/O ON RAMP FROM I-95 (NB)	I	I	9280	.	10700	.	9270
19	BANGOR	30506	0395W	I-395 (WB) E/O OFF RAMP TO I-95 (NB)	I	I	17040	.	17110	.	17120
19	BANGOR	30508	0395W	I-395 (WB) W/O OFF RAMP TO I-95 (SB)	I	I	.	.	6510	.	6840
19	BANGOR	30301	0395X	I-395 (EB) E/O OFF RAMP COLLECTOR - DIST	I	I	11390	.	11760	.	11810
19	BANGOR	30303	0395X	I-395(EB) E/O ON RMP FROM COLLECTOR-DIST	I	I	14230	.	15190	.	15150
19	BANGOR	30305	0395X	I-395 EB COLLECTOR-DIST E/O I-395 (EB)	I	I	5350	.	5460	.	5420
19	BANGOR	30307	0395X	I-395 EB COLL-DIST BTWN RMPS TO FARM RD	I	I	3610	.	3570	.	3940
19	BANGOR	30309	0395X	I-395 EB COLL-DIST W/O OFF RAMP TO MAIN	I	I	6270	.	6020	.	6370
19	BANGOR	30311	0395X	I-395 EB COLL-DIST E/O OFF RAMP TO MAIN	I	I	2840	.	3430	.	3340
19	BANGOR	30401	0395X	I-395 (EB) E/O OFF RAMP TO US 202	I	I	14220	.	14540	.	14390
19	BANGOR	30403	0395X	I-395 (EB) E/O ON RAMP FROM US 202	I	I	.	.	17220	.	17230
19	BANGOR	30405	0395X	I-395 EB ON RAMP FROM US 202	I	I	.	.	2680	.	2840
19	BANGOR	30501	0395X	I-395 (EB) E/O ON RAMP FROM I-95 (SB)	I	I	14990	.	15580	.	16340
19	BANGOR	30503	0395X	I-395 (EB) E/O OFF RAMP TO I-95 (NB)	I	I	12210	.	12420	.	13100
19	BANGOR	30505	0395X	I-395 (EB) E/O ON RAMP FROM I-95 (NB)	I	I	15740	.	16240	.	16630
19	BANGOR	30507	0395X	I-395 (EB) E/O ON RAMP TO I-95 (SB)	I	I	9050
19	BANGOR	20208	10012	BARKER ST NW/O BUS 1A (MAIN)	C	I	400
19	BANGOR	03301	10017	BIRCH ST N/O US 2 (STATE ST)	C	I	.	900	.	.	680
19	BANGOR	00404	10032	BROWN ST SE/O US 2 (STATE ST)	C	I	460
19	BANGOR	05408	10035	BUCK ST NW/O US 1A/SR 9 (MAIN ST)	C	I	.	3100	.	.	2680
19	BANGOR	05804	10035	BUCK ST SE/O WEST BROADWAY	C	I	3070
19	BANGOR	04001	10045	CENTER ST (OW) N/O HARLOW ST	C	I	650
19	BANGOR	09001	10045	CENTER ST N/O CONGRESS ST	C	I	.	6740	.	.	6780
19	BANGOR	09005	10045	CENTER ST S/O CONGRESS ST	C	I	.	6700	.	.	6310
19	BANGOR	17305	10045	CENTER ST S/O POPLAR ST	C	I	.	5060	.	.	6820
19	BANGOR	17401	10045	CENTER ST N/O CUMBERLAND ST	C	I	.	6500	.	.	6350
19	BANGOR	17405	10045	CENTER ST S/O CUMBERLAND ST	C	I	.	4420	.	.	4300

2006 Maine Transportation Count Book

Penobscot

TOWN	STATION	ROAD	LOCATION	TYPE	GROUP	AADT02	AADT03	AADT04	AADT05	AADT06
BANGOR	09003	10056	CONGRESS ST E/O CENTER ST	C	I	.	1230	.	.	1300
BANGOR	09007	10056	CONGRESS ST W/O CENTER ST	C	I	.	590	.	.	660
BANGOR	17403	10064	CUMBERLAND ST E/O CENTER ST	C	I	5270
BANGOR	17407	10064	CUMBERLAND ST W/O CENTER ST	C	I	.	8090	.	.	7220
BANGOR	00501	10089	ESSEX ST N/O GRANDVIEW AVE	M	I	.	.	.	6150	.
BANGOR	00505	10089	ESSEX ST S/O GRANDVIEW AVE	M	I	.	.	.	8430	.
BANGOR	01100	10089	ESSEX ST @ ORONO TL	M	I	2280
BANGOR	09501	10089	ESSEX ST N/O MILFORD ST @ I-95 OVERPASS	C	I	.	8470	8770	.	8500
BANGOR	09601	10089	ESSEX ST N/O BURLEIGH RD	C	I	.	3140	.	3730	3410
BANGOR	09605	10089	ESSEX ST S/O BURLEIGH RD	M	I	5170
BANGOR	11502	10089	STILLWATER AVE NE/O ESSEX ST	C	I	.	14600	17230	.	14710
BANGOR	12401	10089	ESSEX ST N/O GARLAND ST	M	I	4150	4480	.	.	4110
BANGOR	19901	10089	ESSEX ST N/O US 2 (STATE ST)	C	I	.	2640	.	.	2130
BANGOR	01508	10095	FARM RD NW/O US 1A/SR 9 (MAIN ST)	S	I	.	6160	.	.	6090
BANGOR	11801	10097	FERN ST N/O MT HOPE AVE	T	I	.	1200	.	.	1100
BANGOR	11805	10097	FERN ST S/O MT HOPE AVE	T	I	.	1810	.	.	1570
BANGOR	01206	10099	FIFTEENTH ST SW/O OHIO ST	C	I	.	1710	.	.	1690
BANGOR	03401	10102	FOREST AVE N/O US 2 (STATE ST)	C	I	.	2680	.	.	2560
BANGOR	11605	10102	FOREST AVE S/O MT HOPE AVE	C	I	1470
BANGOR	00702	10104	FOURTEENTH ST NE/O US 2/SR 100 (HAMMOND)	C	I	.	2380	.	.	.
BANGOR	03601	10113	FRENCH ST (OW) N/O US 2 (STATE ST)	C	I	.	590	.	.	540
BANGOR	03101	10115	FRUIT ST (NB) N/O US 2 (STATE ST)	C	I	350
BANGOR	12107	10116	GARLAND ST W/O BIRCH ST	C	I	.	3140	.	.	2990
BANGOR	12207	10116	GARLAND ST W/O MAPLE ST	C	I	.	3390	.	.	3320
BANGOR	12403	10116	GARLAND ST E/O ESSEX ST	M	I	.	6360	.	.	6390
BANGOR	12503	10116	GARLAND ST (WB) E/O BROADWAY	C	I	1560
BANGOR	12507	10116	GARLAND ST (WB) W/O BROADWAY	C	I	.	920	.	.	1100
BANGOR	00507	10122	GRANDVIEW AVE W/O ESSEX ST	M	I	.	.	.	4340	.
BANGOR	20101	10126	GROVE ST N/O MT HOPE AVE	C	I	.	2810	.	.	2690
BANGOR	02603	10128	HANCOCK ST E/O WASHINGTON ST SPUR	C	I	.	16370	.	.	15600
BANGOR	03205	10128	HANCOCK ST S/O EMMC ENTRANCE	C	I	12010
BANGOR	14805	10128	HANCOCK ST S/O US 2 (STATE ST)	C	I	.	12570	.	.	.
BANGOR	04008	10131	HARLOW ST NW/O BUS 1A/US 2 (CENTRAL ST)	C	I	.	.	9240	.	.
BANGOR	17004	10131	HARLOW ST SE/O SPRING ST	B	I	11260

2006 Maine Transportation Count Book

Penobscot

TOWN	STATION	ROAD	LOCATION	TYPE	GROUP	AADT02	AADT03	AADT04	AADT05	AADT06
19 BANGOR	02801	10149	HOWARD ST N/O US 2 (STATE ST)	C	I	.	1460	.	.	1430
19 BANGOR	09704	10149	HOWARD ST SE/O STILLWATER AVE	C	I	.	3360	.	.	3430
19 BANGOR	11905	10149	HOWARD ST S/O MT HOPE AVE	C	I	.	2420	.	.	3370
19 BANGOR	11908	10149	HOWARD ST NW/O MT HOPE AVE	M	I	.	2540	.	.	2570
19 BANGOR	18501	10149	HOWARD ST N/O GARLAND ST	M	I	2900
19 BANGOR	07501	10159	KENDUSKEAG AVE N/O HARLOW ST	C	I	.	3790	.	.	3580
19 BANGOR	07904	10159	KENDUSKEAG AVE SE/O GRIFFIN RD	C	I	5310	5140	.	.	5450
19 BANGOR	08006	10159	KENDUSKEAG AVE SW/O SR 15 (BROADWAY)	C	I	.	3270	.	.	3250
19 BANGOR	08104	10159	KENDUSKEAG AVE SE/O BRUCE RD@I95 OVERPAS	C	I	.	3470	.	.	3470
19 BANGOR	15404	10159	KENDUSKEAG AVE SE/O VALLEY AVE	C	I	.	5240	.	.	5450
19 BANGOR	22008	10165	LARKIN ST NW/O US 1A/US 202/SR 9 (MAIN)	B	I	.	.	.	790	.
19 BANGOR	09904	10175	MAPLE ST SE/O STILLWATER AVE	C	I	.	680	.	.	670
19 BANGOR	12201	10175	MAPLE ST N/O GARLAND ST	C	I	.	1620	.	.	1020
19 BANGOR	12205	10175	MAPLE ST S/O GARLAND ST	C	I	.	1750	.	.	850
19 BANGOR	10407	10190	MT HOPE AVE W/O HOGAN RD	C	I	.	5460	.	.	5450
19 BANGOR	11803	10190	MT HOPE AVE E/O FERN ST	T	I	.	5990	.	.	5480
19 BANGOR	11807	10190	MT HOPE AVE W/O FERN ST	T	I	.	5600	.	.	5050
19 BANGOR	11903	10190	MT HOPE AVE E/O HOWARD ST	C	I	.	6140	.	.	6280
19 BANGOR	11907	10190	MT HOPE AVE W/O HOWARD ST	C	I	.	5280	.	.	5040
19 BANGOR	20103	10190	MT HOPE AVE E/O GROVE ST	C	I	.	3650	.	.	3060
19 BANGOR	09303	10203	STILLWATER AVE E/O BROADWAY	C	I	.	10750	.	.	10620
19 BANGOR	19604	10204	NORWAY RD SE/O US 2/SR 100 (HAMMOND)	C	I	.	2020	.	.	.
19 BANGOR	16006	10207	ODLIN RD SW/O PERRY RD	C	I	.	6230	.	.	6360
19 BANGOR	01204	10208	OHIO ST SE/O FIFTEENTH ST	C	I	.	9450	.	.	8970
19 BANGOR	07008	10208	OHIO ST NW/O FINSON RD	C	I	.	6530	.	.	6090
19 BANGOR	07104	10208	OHIO ST SE/O GRIFFIN RD	C	I	.	8350	.	.	7690
19 BANGOR	07108	10208	OHIO ST NW/O GRIFFIN RD	C	I	.	11260	.	10860	10400
19 BANGOR	07208	10208	OHIO ST NW/O DAVIS RD	C	I	.	2200	.	.	1860
19 BANGOR	07308	10208	OHIO ST NW/O SIXTEENTH ST	C	I	.	10970	11590	.	10360
19 BANGOR	13708	10208	OHIO ST NW/O THOMAS HILL RD	C	I	.	5290	.	.	4720
19 BANGOR	13805	10208	OHIO ST S/O JAMES ST	C	I	.	5570	.	.	4860
19 BANGOR	18708	10208	OHIO ST NW/O PINELEDGE RD @ HERMON TL	C	I	.	1710	.	.	1510
19 BANGOR	03701	10213	PARK ST N/O US 2 (STATE ST)	C	I	.	4700	.	.	3680
19 BANGOR	17307	10230	POPLAR ST W/O CENTER ST	C	I	.	930	.	.	1000

County **2006 Maine Transportation Count Book**

Penobscot		STATION	ROAD	LOCATION	TYPE	GROUP	AADT02	AADT03	AADT04	AADT05	AADT06
TOWN											
19	BANGOR	08402	10247	SCHOOL ST NE/O SR 15 (BROADWAY)	C	I	.	3440	.	.	3670
19	BANGOR	07306	10258	SIXTEENTH ST SW/O OHIO ST	C	I	.	1670	.	.	1640
19	BANGOR	09702	10270	STILLWATER AVE NE/O HOWARD ST	B	I	.	14480	.	.	14540
19	BANGOR	09706	10270	STILLWATER AVE SW/O HOWARD ST	C	I	.	13860	.	.	13230
19	BANGOR	10902	10270	STILLWATER AVE NE/O HOGAN RD	C	I	.	6420	8720	.	6900
19	BANGOR	10906	10270	STILLWATER AVE SW/O HOGAN RD	C	I	.	12990	.	.	13240
19	BANGOR	20002	10270	STILLWATER AVE NE/O I-95 (SB) RAMPS	C	I	.	19950	.	.	21310
19	BANGOR	20006	10270	STILLWATER AVE SW/O I-95 (NB) RAMPS	C	I	.	14020	.	.	14260
19	BANGOR	14504	10276	THATCHER ST SE/O CROSBY ST	C	I	.	1030	.	.	970
19	BANGOR	05206	10277	THIRD ST SW/O CEDAR ST	C	I	.	2450	.	.	2310
19	BANGOR	00802	10278	THIRTEENTH ST NE/O US 2/SR 100 (HAMMOND)	C	I	1800
19	BANGOR	02008	10282	UNION ST NW/O BUS 1A (MAIN ST)	C	I	13480	14140	.	.	.
19	BANGOR	04904	10282	UNION ST SE/O US2/SR 100 (HAMMOND ST)	C	I	9730
19	BANGOR	16004	10285	PERRY RD SE/O ODLIN RD	C	I	.	4430	.	.	4930
19	BANGOR	07604	10291	VALLEY AVE SE/O NELSON ST @ KENDUSKG STR	B	I	.	7990	.	.	7640
19	BANGOR	07701	10291	VALLEY AVE N/O FOURTEENTH ST @ BRIDGE	C	I	.	2530	.	.	2370
19	BANGOR	15405	10291	VALLEY AVE S/O KENDUSKEAG AVE	C	I	.	1420	.	.	1430
19	BANGOR	02207	10297	WASHINGTON ST W/O BUS 1A (EXCHANGE ST)	B	I	12210	11810	.	.	10100
19	BANGOR	16506	10303	WESTLAND ST SW/O OHIO ST	C	I	.	2010	.	.	.
19	BANGOR	06806	10331	GRIFFIN RD SW/O ILLINOIS AVE	C	I	.	7590	.	.	7930
19	BANGOR	07102	10331	GRIFFIN RD NE/O OHIO ST @ KENDUSKEAG STR	B	I	12330	12110	.	.	11890
19	BANGOR	07106	10331	GRIFFIN RD SW/O OHIO ST	C	I	.	12940	.	.	12860
19	BANGOR	06706	10346	VERMONT AVE SW/O SR 222 (UNION ST)	C	I	.	4980	.	.	5970
19	BANGOR	14102	10346	VERMONT AVE (OW) NE/O MAINE AVE	S	I	.	2190	.	.	2340
19	BANGOR	14202	10354	GODFREY BLVD NE/O MAINE AVE	C	I	.	4600	.	.	4630
19	BANGOR	14206	10354	GODFREY BLVD SW/O MAINE AVE	C	I	2760
19	BANGOR	16205	10358	HILDRETH ST S/O US 2 (OUTER HAMMOND ST)	C	I	.	1250	.	.	1170
19	BANGOR	08706	10371	GRIFFIN RD SW/O SR 15 (BROADWAY)	B	I	6490
19	BANGOR	18801	10493	PUSHAW RD #1 N/O SR 15 (BROADWAY)	C	I	.	3470	.	.	3510
19	BANGOR	22204	10500	HUSSON AVE SE/O (PW) TO COLLEGE CIRCLE	T	I	.	.	6310	.	.
19	BANGOR	22206	10500	HUSSON AVE SW/O COLLEGE CIRCLE ENTRANCE	T	I	.	.	4440	.	.
19	BANGOR	03001	10605	HOGAN RD N/O US 2 (STATE ST)	C	I	.	10620	.	.	9780
19	BANGOR	10401	10605	HOGAN RD N/O MT HOPE AVE	C	I	.	17210	.	.	16400
19	BANGOR	14701	10605	HOGAN RD N/O SYLVAN RD	C	I	.	19030	.	.	24680

2006 Maine Transportation Count Book

Penobscot

TOWN	STATION	ROAD	LOCATION	TYPE	GROUP	AADT02	AADT03	AADT04	AADT05	AADT06
19 BANGOR	18401	10605	HOGAN RD (NB) N/O I-95 (SB) OFF RAMP	B	I	.	25020	.	.	12490
19 BANGOR	18411	10605	HOGAN RD (SB) N/O I-95 (SB) ON RAMP	B	I	13730
19 BANGOR	21404	10605	HOGAN RD SE/O LONGVIEW DR	C	I	.	12240	.	.	11460
19 BANGOR	16904	10609	CHASE RD SE/O STILLWATER AVE	C	I	.	2090	.	.	.
19 BANGOR	07202	10618	DAVIS RD NE/O OHIO ST	C	I	.	1310	.	.	1290
19 BANGOR	07206	10618	DAVIS RD SW/O OHIO ST	C	I	1590	1520	.	.	.
19 BANGOR	07002	10619	FINSON RD NE/O OHIO ST	C	I	4740	5130	.	.	4380
19 BANGOR	22104	10785	MAY ST SE/O BUS 1A/US 202/SR 9 (MAIN ST)	C	I	.	840	.	.	.
19 BANGOR	08702	11287	BURLEIGH RD NE/O SR 15 (BROADWAY)	B	I	.	4770	.	.	4930
19 BANGOR	06601	12496	MAINE AVE N/O US 2/SR 100 (HAMMOND)	C	I	.	14470	14080	.	.
19 BANGOR	14106	12496	MAINE AVE SW/O TAFT ST	C	I	.	14020	.	.	15300
19 BANGOR	14204	12496	MAINE AVE SE/O GODFREY BLVD (NB)	C	I	9180
19 BANGOR	16402	12496	MAINE AVE NE/O TEXAS AVE	S	I	.	10640	.	.	.
19 BANGOR	16406	12496	MAINE AVE SW/O TEXAS AVE	S	I	.	11540	.	.	12690
19 BANGOR	21304	12503	TEXAS AVE SE/O VERMONT AVE	S	I	.	1390	.	.	1610
19 BANGOR	14108	12509	JOHNSON ST NW/O MAINE AVE	S	I	.	330	.	.	360
19 BANGOR	14104	12516	TAFT ST SE/O MAINE AVE	S	I	.	160	.	.	150
19 BANGOR	14707	12534	SYLVAN RD W/O HOGAN RD	C	I	.	3500	.	.	3380
19 BANGOR	21402	12560	LONGVIEW DR NE/O HOGAN RD	C	I	.	7290	.	.	6080
19 BANGOR	18600	60606	STILLWATER AVE @ ORONO TL	C	I	.	6640	.	.	.
19 BANGOR	04206	A001C	BUS 1A/US 2 (CENTRAL) SW/O HARLOW ST @BR	B	I	11890
19 BANGOR	02403	B001C	BUS 1A (WASHINGTON ST) (OW) E/O OAK ST	C	I	.	9110	.	.	8860
19 BANGOR	10603	B001C	HANCOCK ST (OW) E/O BUS 15 (OAK ST)	B	I	7690
19 BRADFORD	30601	0011X	SR 11 N/O IR 2708(LAGRANGE)@ORNEVILLE TL	C	I	.	770	.	.	850
19 BRADFORD	30605	0011X	SR 11 S/O IR 1935 (ATKINSON RD)	C	I	.	1100	.	.	980
19 BRADFORD	64701	0011X	SR 11 N/O SR 155 (EAST RD)	C	I	.	1490	.	.	1480
19 BRADFORD	64707	0011X	SR 11 W/O SR 221	C	I	.	1230	.	.	1320
19 BRADFORD	71003	00510	IR 510 (STATION RD) E/O SR 155 (STORER)	C	I	.	290	.	.	340
19 BRADFORD	30608	00519	IR 519 (ATKINSON) NW/O IR 1935(ATKINSON)	C	I	.	190	.	.	200
19 BRADFORD	64602	0155X	SR 155 NE/O IR 507 (BOYD LAKE RD)	C	I	.	950	880	.	950
19 BRADFORD	64605	0155X	SR 155 (STORER RD) S/O IR 2708(LAGRANGE)	C	I	.	490	.	.	.
19 BRADFORD	64703	0155X	SR 155 (EAST RD) E/O SR 221 @ BR# 5446	C	I	.	1590	.	.	1660
19 BRADFORD	71001	0155X	SR 155 (STORER RD) N/O IR 510 (STATION)	C	I	.	750	.	.	890
19 BRADFORD	71007	0155X	SR 155 (EAST RD) W/O IR 510 (STATION RD)	C	I	.	1170	.	.	.

2006 Maine Transportation Count Book

Penobscot

	TOWN	STATION	ROAD	LOCATION	TYPE	GROUP	AADT02	AADT03	AADT04	AADT05	AADT06
19	BRADFORD	64705	0221X	SR 221 S/O SR 11/155	C	I	.	1790	.	.	1480
19	BRADLEY	63503	00620	IR 620(CRAM ST) E/O IR 1530(HIGHLAND AV)	C	I	.	910	.	.	.
19	BRADLEY	63407	01321	IR 1321(BULLEN ST) W/O IR 1530 @BR# 3933	C	I	.	600	.	.	.
19	BRADLEY	47500	0178X	SR 178 @ EDDINGTON TL	C	I	.	3410	.	.	3330
19	BRADLEY	63201	0178X	SR 178 N/O IR 1317 (BROAD ST) @ TL	C	I	.	5580	.	.	.
19	BRADLEY	63306	0178X	SR 178 SW/O IR 1329 (BOYNTON ST)	M	I	4310	4520	.	.	3890
19	BREWER	00104	0001A	US 1A (WILSON ST) SE/O SR 9/15 (N MAIN)	C	I	.	10460	10790	.	9150
19	BREWER	00604	0001A	US 1A SE/O I-395 ON/OFF RAMPS	S	I	8600
19	BREWER	00608	0001A	US 1A NW/O I-395 RAMPS	S	I	11800
19	BREWER	01208	0001A	US 1A NW/O I-395 EB OFF RAMP	S	I	15270
19	BREWER	01504	0001A	US 1A (WILSON ST) SE/O PARKWAY SOUTH	C	I	.	.	22830	.	17990
19	BREWER	01608	0001A	US 1A (WILSON ST) NW/O GREEN POINT RD	M	I	14700
19	BREWER	01704	0001A	US 1A (WILSON ST) SE/O PIERCE RD	C	I	.	12650	.	.	.
19	BREWER	01708	0001A	US 1A (WILSON ST) NW/O PIERCE RD	C	I	.	15540	.	.	14840
19	BREWER	01908	0001A	US 1A (WILSON ST) NW/O MULLEN WAY	B	I	.	11150	.	.	9770
19	BREWER	02004	0001A	US 1A (WILSON ST) SE/O HIGHLAND AVE	C	I	.	11580	.	.	10030
19	BREWER	02008	0001A	US 1A (WILSON ST) NW/O PARKER ST	C	I	.	10330	.	.	9270
19	BREWER	04500	0001A	US 1A @ HOLDEN TL	S	II	.	23330	20160	21010	20080
19	BREWER	00404	0001C	BUS 1A (STATE ST) SE/O SR 9/178 (N MAIN)	B	I	.	.	.	14080	.
19	BREWER	00408	0001C	BUS 1A (STATE ST) NW/O SR 9/178 (N MAIN)	C	I	17240
19	BREWER	03804	0001C	BUS 1A (STATE ST) SE/O BROOKS ST	C	I	.	15080	.	.	.
19	BREWER	04204	0001C	BUS 1A (STATE ST) SE/O SOMERSET ST	C	I	.	14310	.	.	13830
19	BREWER	00102	0009X	SR9/15 (N MAIN ST) NE/O US 1A(WILSON ST)	B	I	.	16020	.	.	13450
19	BREWER	00206	0009X	SR 9/15 (N MAIN ST) SW/O CENTER ST	B	I	13970
19	BREWER	00306	0009X	SR 9/15 (N MAIN ST) SW/O PARKER ST	B	I	13260
19	BREWER	00402	0009X	SR 9/178 (N MAIN ST) NE/O BUS 1A (STATE)	B	I	15300	.	.	15130	14250
19	BREWER	00406	0009X	SR 9 (N MAIN ST) SW/O BUS 1A (STATE ST)	C	I	7850
19	BREWER	00502	0009X	SR 9/178 (N MAIN ST) NE/O CHAMBERLAIN ST	C	I	.	15490	.	.	.
19	BREWER	00506	0009X	SR 9/178 (N MAIN ST) SW/O CHAMBERLAIN ST	M	I	14390
19	BREWER	00702	0009X	SR 9/178 (N MAIN ST) NE/O PARKWAY NORTH	C	I	.	13170	.	.	11620
19	BREWER	00800	0009X	SR 9/178 (N MAIN ST) @FELTS BROOK BRIDGE	C	I	.	10900	.	.	9540
19	BREWER	04003	0009X	SR 9/178 (N MAIN ST) E/O DAY RD	C	I	.	10260	.	.	8490
19	BREWER	04007	0009X	SR 9/178 (N MAIN ST) W/O DAY RD	C	I	.	9850	.	.	9120
19	BREWER	04302	0009X	SR 9/178 (N MAIN ST) NE/O GILMORE ST	C	I	12350

2006 Maine Transportation Count Book

Penobscot

TOWN	STATION	ROAD	LOCATION	TYPE	GROUP	AADT02	AADT03	AADT04	AADT05	AADT06
19 BREWER	03306	0015C	BUS 15 (S MAIN ST) SW/O HARDY ST	C	I	14090
19 BREWER	00106	0015X	SR 15 (S MAIN ST) SW/O US 1A (WILSON ST)	C	I	.	17580	16010	.	15560
19 BREWER	02600	0015X	SR 15 (S MAIN ST) @ ORRINGTON TL	C	I	10690	11410	.	11830	11130
19 BREWER	02702	0015X	SR 15 (S MAIN ST) NE/O ELM ST	C	I	.	12890	.	.	12170
19 BREWER	03006	0015X	SR 15 (S MAIN ST) SW/O PENDLETON ST	C	I	.	15510	.	.	14480
19 BREWER	03102	0015X	SR 15 (S MAIN ST) NE/O GROVE ST	C	I	.	17040	.	.	15390
19 BREWER	03106	0015X	SR 15 (S MAIN ST) SW/O GROVE ST	C	I	.	16730	.	.	14930
19 BREWER	04401	0015X	SR 15 (S MAIN ST) N/O INDUSTRIAL PKWY #2	C	I	.	16580	.	.	13400
19 BREWER	30210	0395W	I-395/SR 15 (WB) W/O S MAIN ST RAMP	A		14480	12510	.	.	.
19 BREWER	30002	0395W	I-395 (WB) E/O ON RAMP FROM WILSON ST	I	I	4590	.	5080	.	4520
19 BREWER	30102	0395W	I-395 (WB) E/O ON RAMP FROM PARKWAY SO	I	I	4980	.	5520	.	5610
19 BREWER	30104	0395W	I-395 (WB) E/O OFF RAMP TO PARKWAY SOUTH	I	I	5250	.	5900	.	5870
19 BREWER	30202	0395W	I-395 (WB) E/O ON RAMP FROM S MAIN ST	I	I	9100	.	9650	.	10020
19 BREWER	30204	0395W	I-395 (WB) E/O OFF RAMP TO S MAIN ST	I	I	9650	.	10450	.	10730
19 BREWER	30209	0395X	I-395/SR 15 (EB) W/O S MAIN ST RAMP	A		14240	14650	15190	.	.
19 BREWER	30001	0395X	I-395 (EB) E/O OFF RAMP TO WILSON ST	I	I	750	.	1130	.	1210
19 BREWER	30101	0395X	I-395 (EB) E/O OFF RAMP TO PARKWAY SOUTH	I	I	5460	.	5730	.	5730
19 BREWER	30103	0395X	I-395 (EB) E/O ON RAMP FROM PARKWAY SO	I	I	5830	.	6170	.	6070
19 BREWER	30201	0395X	I-395 (EB) E/O OFF RAMP TO S MAIN ST	I	I	9020	.	9300	.	9550
19 BREWER	30203	0395X	I-395 (EB) E/O ON RAMP FROM S MAIN ST	I	I	9590	.	10140	.	10080
19 BREWER	02408	20014	BREWER ST NW/O PARKWAY SOUTH	C	I	.	1020	.	.	970
19 BREWER	00505	20025	CHAMBERLAIN ST S/O SR 9/178 (MAIN ST)	C	I	.	1110	.	.	.
19 BREWER	01402	20025	CHAMBERLAIN ST NE/O US 1A (WILSON ST)	C	I	.	2140	.	.	1860
19 BREWER	03504	20025	CHAMBERLAIN ST SE/O EASTERN AVE	C	I	.	1790	.	.	1530
19 BREWER	03508	20025	CHAMBERLAIN ST NW/O EASTERN AVE	C	I	.	1290	.	.	.
19 BREWER	01103	20038	EASTERN AVE E/O BUS 1A (STATE ST)	B	I	.	5020	.	5500	4480
19 BREWER	01803	20038	EASTERN AVE E/O PARKWAY NORTH	M	I	3820
19 BREWER	03503	20038	EASTERN AVE E/O CHAMBERLAIN ST	C	I	.	5180	.	.	4850
19 BREWER	04703	20038	EASTERN AVE E/O PIERCE RD	C	I	.	3590	.	.	3860
19 BREWER	04707	20038	EASTERN AVE W/O PIERCE RD	C	I	.	2310	.	.	2170
19 BREWER	05004	20038	EASTERN AVE SE/O BRIAN DR @ HOLDEN TL	M	I	1550
19 BREWER	03404	20039	EDGEWOOD DR SE/O PARKWAY SOUTH	C	I	.	1230	.	.	1050
19 BREWER	02403	20040	ELM ST E/O PARKWAY SOUTH	C	I	.	1760	.	.	1760
19 BREWER	02407	20040	ELM ST W/O PARKWAY SOUTH	C	I	.	2700	.	.	.

County **2006 Maine Transportation Count Book**

Penobscot		STATION	ROAD	LOCATION	TYPE	GROUP	AADT02	AADT03	AADT04	AADT05	AADT06
TOWN											
19	BREWER	02704	20040	ELM ST SE/O SR 15 (S MAIN ST)	C	I	.	3290	.	.	3110
19	BREWER	03104	20051	GROVE ST SE/O SR 15 (S MAIN ST)	C	I	.	850	.	.	720
19	BREWER	02500	20074	MILL ST @ ORRINGTON TL	C	I	3050	2980	.	.	2820
19	BREWER	00305	20079	PARKER ST S/O SR 9/178 (N MAIN ST)	C	I	.	1650	.	.	1220
19	BREWER	02001	20079	PARKER ST N/O US 1A (WILSON ST)	C	I	.	1780	.	.	1370
19	BREWER	00704	20080	PARKWAY NORTH SE/O SR 9/178 (N MAIN ST)	C	I	.	2320	.	.	1620
19	BREWER	03605	20080	PARKWAY NORTH S/O SILK ST	C	I	.	2970	.	.	2760
19	BREWER	03705	20080	PARKWAY NORTH S/O WASHINGTON ST	C	I	.	2290	.	.	1850
19	BREWER	01506	20081	PARKWAY SOUTH SW/O US 1A (WILSON ST)	C	I	.	.	11260	.	9570
19	BREWER	02103	20081	PARKWAY SOUTH E/O I-395 INTERCHANGE	C	I	.	14660	.	.	.
19	BREWER	02107	20081	PARKWAY SOUTH W/O I-395 INTERCHANGE	C	I	.	9340	.	.	8680
19	BREWER	02205	20081	PARKWAY SOUTH S/O PENDLETON ST	C	I	.	4710	.	.	4270
19	BREWER	02401	20081	PARKWAY SOUTH N/O ELM ST	C	I	.	3320	.	.	3010
19	BREWER	03402	20081	PARKWAY SOUTH NE/O GROVE ST	C	I	.	6830	.	.	6660
19	BREWER	05207	20081	PARKWAY SOUTH W/O INDUSTRIAL PKWY #1	C	I	.	7910	.	.	.
19	BREWER	02208	20083	PENDLETON ST NW/O PARKWAY SOUTH	C	I	.	1870	.	.	1420
19	BREWER	03004	20083	PENDLETON ST SE/O SR 15 (MAIN ST)	C	I	.	1750	.	.	1230
19	BREWER	05408	20097	ROBIN HOOD DR NW/O MAID MARION LN	C	I	.	1340	.	.	1210
19	BREWER	00904	20104	SILK ST SE/O WASHINGTON ST	C	I	.	710	.	.	880
19	BREWER	00908	20104	SILK ST NW/O WASHINGTON ST	C	I	.	740	.	.	580
19	BREWER	05304	20112	SUNSET STRIP SE/O PARKWAY SOUTH	C	I	.	1320	.	.	1120
19	BREWER	04404	20121	INDUSTRIAL PKWY #2 SE/O BUS 15 (S MAIN)	C	I	.	2080	.	.	2300
19	BREWER	00902	20126	WASHINGTON ST NE/O SILK ST	C	I	.	1300	.	.	1530
19	BREWER	00906	20126	WASHINGTON ST SW/O SILK ST	C	I	.	1810	.	.	2010
19	BREWER	01002	20126	WASHINGTON ST NE/O BUS 1A (STATE ST)	C	I	.	2490	.	.	2870
19	BREWER	03703	20126	WASHINGTON ST E/O PARKWAY NORTH	C	I	.	1360	.	.	1050
19	BREWER	04602	20129	GREEN POINT RD NE/O WISWELL RD	C	I	.	1870	.	.	2240
19	BREWER	05201	20140	INDUSTRIAL PKWY #1 N/O PARKWAY SOUTH	C	I	.	1650	.	.	2280
19	BREWER	04005	20623	DAY RD S/O SR 9/178 (N MAIN ST)	C	I	.	850	.	.	850
19	BREWER	05102	20626	LAMBERT RD NE/O EASTERN AVE	C	I	.	1490	.	.	1840
19	BREWER	01702	20627	PIERCE RD NE/O US 1A (WILSON ST)	C	I	.	3780	.	.	4010
19	BREWER	04705	20627	PIERCE RD S/O EASTERN AVE	C	I	.	2570	.	.	3020
19	BREWER	04604	30634	WISWELL RD SE/O GREEN POINT RD	C	I	.	1480	.	.	1500
19	BURLINGTON	45201	00723	IR 723 (LONG RIDGE RD) N/O SR 188	C	I	.	.	560	.	.

2006 Maine Transportation Count Book

Penobscot

TOWN	STATION	ROAD	LOCATION	TYPE	GROUP	AADT02	AADT03	AADT04	AADT05	AADT06
19 BURLINGTON	61100	00723	IR 723 (LONG RIDGE RD) @ LINCOLN TL	C	I	.	.	550	.	.
19 BURLINGTON	70601	00737	IR 737 (BACK RD) N/O SR 188	C	I	.	.	60	.	.
19 BURLINGTON	70607	00739	IR739(WOODMAN MILL) W/O IR977(PHILBRICK)	C	I	.	.	130	.	.
19 BURLINGTON	45205	0188X	SR 188 S/O IR 748 (HAYDEN LN)	C	I	.	.	680	.	.
19 BURLINGTON	45207	0188X	SR 188 W/O IR 723 (LONG RIDGE RD)	C	I	.	.	580	.	.
19 BURLINGTON	70603	0188X	SR 188 E/O IR 737 (BACK RD)	C	I	.	.	400	.	.
19 BURLINGTON	80507	0188X	SR 188 W/O IR 983 @ BR# 3883	C	I	.	.	260	.	.
19 CARMEL	32502	0002X	US 2/SR 100 NE/O IR 1845 @ RR XING	C	II	.	3160	.	.	3500
19 CARMEL	32508	0002X	US 2/SR 100 NW/O IR 2380 (FIVE RD)	C	II	.	2840	.	.	2820
19 CARMEL	77700	0002X	US 2/SR 100 @ HERMON TL	M	II	.	.	.	4280	4180
19 CARMEL	41600	00404	IR 404 (FULLER RD) @ HERMON TL	C	I	.	980	.	.	1250
19 CARMEL	65907	00404	IR 404 (FULLER RD) W/O IR 415 (IRISH RD)	C	I	.	530	.	.	550
19 CARMEL	75207	00404	IR 404 (FULLER RD) W/O IR 522 (FIVE RD)	C	I	.	320	.	.	290
19 CARMEL	75303	00404	IR 404 (FULLER RD) E/O IR 413(HORSEBACK)	C	I	.	760	.	.	890
19 CARMEL	75301	00413	IR 413 (HORSEBACK RD) N/O IR 404(FULLER)	C	I	.	530	.	.	510
19 CARMEL	32501	00522	IR 522 (FIVE) N/O US 2/SR 100 @BR# 5632	C	I	.	690	.	.	860
19 CARMEL	42405	00535	IR 535 (COOK RD) S/O IR 1234 @ BR# 5267	C	I	200
19 CARMEL	31604	0069X	SR 69 SE/O IR 2018 (HINCKLEY HILL RD)	C	I	.	1720	.	.	1440
19 CARMEL	31608	0069X	SR 69 NW/O IR 2018 (HINCKLEY HILL) @BR	C	I	.	1600	.	.	1340
19 CARMEL	32607	0069X	SR 69 W/O IR 535 (COOK RD)	C	I	.	880	.	.	900
19 CARMEL	52104	0095S	I-95 (SB) @ COOK RD OVERPASS	A		9620	9900	9920	9270	9840
19 CARMEL	52103	0095X	I-95 (NB) @ COOK RD OVERPASS	A		9530	9820	9890	9700	9790
19 CARMEL	42407	01234	IR 1234 (MARCHO) W/O IR 535 @ BR# 0841	C	I	90
19 CARMEL	78107	02018	IR 2018 (HINKLEY HILL RD) W/O IR 466 @TL	M	I	.	.	.	530	.
19 CARROLL PLT	36802	0006X	SR 6 (MAIN RD) NE/O IR 709 (BROWN RD)	C	II	.	.	1510	.	.
19 CARROLL PLT	44000	0006X	SR 6 @ KOSSUTH TWP TL	C	II	.	.	1180	.	.
19 CARROLL PLT	36901	00705	(PW) IR 705 (NORTH RD) N/O SR 6	C	II	.	.	70	.	.
19 CARROLL PLT	37001	00709	IR 709 (BROWN RD) N/O IR 702 (LOWELL RD)	C	II	.	.	70	.	.
19 CARROLL PLT	37005	00709	IR 709 (RICKER RD) S/O IR 702(LOWELL RD)	C	II	.	.	20	.	.
19 CARROLL PLT	44102	0169X	SR169 NE/O SR170 @SPRINGFIELD TL@BR#5185	C	II	.	.	420	.	.
19 CHARLESTON	47801	0011A	SR 11A N/O SR 11	C	I	.	1190	.	.	1260
19 CHARLESTON	72503	0011A	SR 11A E/O IR 338(HARRIS RD)@BRADFORD TL	C	I	.	480	.	.	470
19 CHARLESTON	72603	0011A	SR 11A E/O IR 1015 (ATKINSON RD)	C	I	710
19 CHARLESTON	72605	0011A	SR 11A S/O IR 1907 (DOVER RD)	C	I	.	1080	.	.	1080

2006 Maine Transportation Count Book

Penobscot

TOWN	STATION	ROAD	LOCATION	TYPE	GROUP	AADT02	AADT03	AADT04	AADT05	AADT06
19 CHARLESTON	34701	0011X	SR 11 N/O IR 2173 (DEER VIEW LN)	C	I	.	1710	.	.	1520
19 CHARLESTON	34705	0011X	SR 11/15 S/O SR 11 @ CORINTH TL	C	I	.	4870	.	.	5090
19 CHARLESTON	72407	0011X	SR 11 W/O IR 338 (HARRIS RD)	C	I	.	800	.	.	630
19 CHARLESTON	72703	0011X	SR 11 E/O IR 525 (RIDGE RD)	C	I	.	860	.	.	680
19 CHARLESTON	30304	0015X	SR 15 SE/O IR 1907 (DOVER RD)	C	I	.	2900	.	.	2920
19 CHARLESTON	34708	0015X	SR 15 NW/O IR 339 (BACON RD)	C	I	.	3120	.	.	3250
19 CHARLESTON	65000	0015X	SR 15 @ GARLAND TL	C	I	.	2860	.	.	2810
19 CHARLESTON	64907	00326	IR 326 (GARLAND RD) W/O SR 15	C	I	470
19 CHARLESTON	34707	00339	IR 339 (BACON RD) W/O SR 15	C	I	.	260	.	.	180
19 CHARLESTON	72601	01015	IR 1015 (ATKINSON) N/O SR 11A (DOVER)	C	I	.	620	.	.	650
19 CHARLESTON	30303	01907	IR 1907 (DOVER RD) E/O SR 15	C	I	.	460	.	.	510
19 CHESTER	45702	00554	IR 554 NE/O SR 116	C	I	.	.	1380	.	.
19 CHESTER	39404	00965	IR 965 SE/O IR 554 @ BR# 3790 @ WINN TL	C	I	.	.	1440	.	.
19 CHESTER	45701	0116X	SR 116 N/O IR 554 (N CHESTER RD)	C	II	830
19 CHESTER	45706	0116X	SR 116 SW/O IR 554 (N CHESTER RD)	C	I	.	.	1590	.	.
19 CHESTER	60902	0116X	SR 116 NE/O IR 1887 (PENOBSCOT VALLEY)	C	I	.	.	2060	.	.
19 CHESTER	60904	0116X	SR 116 (IR 1887) SE/O SR 116	C	I	.	.	4930	.	.
19 CHESTER	60906	0116X	MATTAMISCONTIS SW/O IR1887(PENOBSCOT VA)	C	I	.	.	390	.	.
19 CLIFTON	49502	0009X	SR 9 NE/O SR 180 @ BR# 5415	C	II	.	5070	5000	.	.
19 CLIFTON	49506	0009X	SR 9 SW/O IR 1413	C	II	.	6650	6720	.	.
19 CLIFTON	79107	0009X	SR 9 W/O IR 646 (MILL LN)	C	II	.	4990	4920	.	.
19 CLIFTON	79105	00646	IR 646 (MILL LN) S/O SR 9	C	III	.	140	120	.	.
19 CLIFTON	62505	01419	(PW) IR 1419 S/O IR 2219	C	III	.	.	270	.	.
19 CLIFTON	49504	0180X	SR 180 SE/O SR 9 @ BR# 5440	C	II	.	1070	1280	.	.
19 CLIFTON	62504	0180X	SR 180 SE/O IR 2219 (S JCT)	C	II	.	820	830	.	.
19 CORINNA	00202	0007X	SR 7 (DEXTER RD) NE/O SR 11/43 (E MAIN)	C	I	.	6210	.	.	.
19 CORINNA	00206	0007X	SR 7/11/43 (E MAIN) SW/O SR 7 (DEXTER)	C	I	.	9040	.	.	.
19 CORINNA	00402	0007X	SR 7 (DEXTER) 0.4MI NE/O WINCHESTER @CUL	C	I	.	6230	.	.	5820
19 CORINNA	01105	0007X	SR 7/11 (SCHOOL ST) S/O MILL ST	C	I	.	7630	.	.	7310
19 CORINNA	65704	0007X	SR 7 SE/O IR 348 (LINCOLN MILLS RD)	C	I	.	5330	.	.	5050
19 CORINNA	65708	0007X	SR 7 NW/O IR 348 (LINCOLN MILLS RD)	C	I	.	5370	.	.	5160
19 CORINNA	00203	0011X	SR 11/43 (E MAIN ST) E/O SR 7 (DEXTER)	C	I	.	2730	.	.	2580
19 CORINNA	00502	0011X	SR 11/43(E MAIN) 0.2MI NE/O WNCHSTR @CUL	C	I	.	2600	.	.	2020
19 CORINNA	34005	0011X	SR 11/43 S/O IR 350 (CHMBRLN MTG HOUSE)	C	I	.	1480	.	.	.

2006 Maine Transportation Count Book

Penobscot

TOWN	STATION	ROAD	LOCATION	TYPE	GROUP	AADT02	AADT03	AADT04	AADT05	AADT06
19 CORINNA	42903	00318	IR 318(MOODY HILL RD) E/O IR 322@BR#0824	C	I	170
19 CORINNA	43006	00321	IR 321(FISH RD) SW/O IR317(SUNKIN BR RD)	C	I	430
19 CORINNA	90303	00321	IR 321 (FISHER RD) E/O IR 463 @BR# 2849	C	I	650
19 CORINNA	90305	00321	IR 321 (FISHER RD) S/O IR 463	C	I	430
19 CORINNA	34003	00350	IR 350 (CHMBRLN MTG HOUSE) E/O SR 11/43	C	I	.	200	.	.	.
19 CORINNA	01406	00362	W MAIN ST 0.12 MILES SW/O MAPLE ST @ CUL	C	I	950
19 CORINNA	01507	0043X	SR 43 (PLEASANT) 0.45 MI W/O ELLIOT @CUL	C	I	.	1010	.	.	.
19 CORINNA	77000	0043X	SR 43 @ ST ALBANS TL	C	I	.	890	.	.	830
19 CORINNA	00204	0222X	SR 222 (SPRING) SE/O SR 11/43 (E MAIN)	C	I	.	1580	.	.	.
19 CORINNA	00304	0222X	SR 222 (SPRING) 0.1 MI SE/O KENWOOD @CUL	C	I	.	1150	.	.	1010
19 CORINNA	75605	0222X	SR 222 S/O IR 360 (IRELAND AVE)	C	I	.	800	.	.	870
19 CORINTH	35206	0011X	SR 11/43 SW/O SR 15	C	I	.	3070	.	.	.
19 CORINTH	35208	0011X	SR 11/15 NW/O IR 1106 (MORISON AVE)	C	I	.	5730	.	.	5780
19 CORINTH	73207	0011X	SR 11/43 W/O SR 94 @ BR# 3559	C	I	.	1410	.	.	1340
19 CORINTH	35204	0015X	SR 15 SE/O SR 11/43	C	I	.	7540	.	.	7900
19 CORINTH	64801	0015X	SR 15 N/O IR 491 (HUDSON HILL RD)	C	I	5880
19 CORINTH	72004	0015X	SR 15 SE/O IR 392 (TATE RD)	C	I	.	6380	.	.	5890
19 CORINTH	72008	0015X	SR 15 NW/O IR 392 (BEECH GROVE RD)	C	I	5900
19 CORINTH	72301	00338	IR 338 (PUDDLEDOCK RD) N/O SR 43	C	I	.	510	.	.	660
19 CORINTH	73205	00370	IR 370 (BEANS MILLS RD) S/O SR 11/43 @BR	C	I	.	460	.	.	370
19 CORINTH	72002	00392	IR 392 (TATE RD) NE/O SR 15	C	I	680
19 CORINTH	35202	0043X	SR 43 NE/O IR 1106 (MORISON AVE)	C	I	.	1630	.	.	1580
19 CORINTH	72302	0043X	SR 43 NE/O IR 338 (PUDDLEDOCK RD)	C	I	.	980	.	.	1060
19 CORINTH	72306	0043X	SR 43 SW/O IR 517 (TATE RD) @ BR# 5880	C	I	.	1180	.	.	1040
19 CORINTH	64803	00491	IR 491 (HUDSON HILL) E/O IR 1997 (OAK)	C	I	.	850	.	.	1090
19 CORINTH	72106	00529	IR 529 (W CORINTH RD) SW/O SR 15	C	I	.	1220	.	.	1250
19 CORINTH	73201	0094X	SR 94 N/O SR 11/43	C	I	.	1080	.	.	1150
19 DEXTER	63105	0007X	SR 7(CORINNA RD) S/O IR 2337(GARLAND RD)	A		5850	6040	6100	6000	5790
19 DEXTER	00202	0007X	SR 7 (CHURCH ST) NE/O ACADIA ST @ CUL	C	I	.	3570	.	.	.
19 DEXTER	02305	0007X	SR 7 (SPRING ST) S/O SR 7 (WALL ST)	C	I	.	8260	.	.	7850
19 DEXTER	03301	0007X	SR 7 (SPRING ST) N/O LIBERTY ST	C	I	.	8910	.	.	8300
19 DEXTER	03402	0007X	SR 7/23 (CHURCH ST) NE/O HALL ST	C	I	.	9000	.	.	.
19 DEXTER	03802	0007X	SR 7 (CHURCH ST) NE/O SR 23 (DAM ST)	S	I	6930
19 DEXTER	03806	0007X	SR 7/23 (CHURCH ST) SW/O SR 23 (DAM ST)	S	I	8840

2006 Maine Transportation Count Book

Penobscot

TOWN	STATION	ROAD	LOCATION	TYPE	GROUP	AADT02	AADT03	AADT04	AADT05	AADT06
19 DEXTER	06604	0007X	SR 7 (SPRING ST) 0.13MI SE/O FAY CT @CUL	C	I	.	9120	.	.	.
19 DEXTER	30102	0007X	SR 7 NE/O IR 309(SILVER MILLS)@GARLND TL	C	I	.	2940	.	.	2670
19 DEXTER	30106	0007X	SR 7 SW/O IR 309 (SILVER MILLS RD)	C	I	.	3220	.	.	2960
19 DEXTER	76501	0007X	SR 7 N/O IR 344 (AIRPORT RD) @ BR#2099	C	I	.	6270	.	.	5460
19 DEXTER	01602	0023X	SR 23 (MAIN ST) NE/O LIBERTY ST	C	I	1220
19 DEXTER	01606	0023X	SR 23 (MAIN ST) SW/O LIBERTY ST	C	I	1540
19 DEXTER	03807	0023X	SR 23 (DAM ST) W/O SR 7 (CHURCH ST)	S	I	5300
19 DEXTER	04702	0023X	SR 23 (MAIN ST) NE/O ZIONS HILL RD	C	I	.	6020	.	.	.
19 DEXTER	04706	0023X	SR 23 (MAIN ST) SW/O ZIONS HILL RD	C	I	.	3270	.	.	2810
19 DEXTER	05808	0023X	SR 23 (GROVE ST) NW/O GROVE ST	C	I	.	4880	.	.	.
19 DEXTER	05900	0023X	SR 23 (GROVE ST) @ CUL(WASSOOKEAG LK BR)	C	I	.	4680	.	.	4640
19 DEXTER	06106	0023X	SR 23 (MAIN) 0.25 MI SW/O SKIMMER ST	C	I	.	1200	.	.	.
19 DEXTER	34801	0023X	SR 23 N/O IR1166(GOFF RD)@SANGERVILLE TL	C	I	.	2540	.	.	2530
19 DEXTER	65405	0023X	SR 23 S/O IR 313 (CROCKETT RD)(N JCT)	C	I	.	2810	.	.	2820
19 DEXTER	65607	0023X	SR 23 W/O IR 1125 @ RIPLEY TL	C	I	.	1050	.	.	.
19 DEXTER	33907	00308	IR 308 (CAMBRIDGE RD) W/O SR 23	C	I	.	800	.	.	.
19 DEXTER	30108	00309	IR 309 (SILVER MILLS RD) NW/O SR 7	C	I	.	500	.	.	400
19 DEXTER	01107	00314	ZIONS HILL RD W/O LINCOLN ST	C	I	920
19 DEXTER	04707	00314	ZIONS HILL RD W/O SR 23 (MAIN ST)	C	I	.	1590	.	.	1430
19 DEXTER	01505	00321	RAILROAD AVE S/O SR 23 (MAIN ST)	C	I	1150
19 DEXTER	01803	00328	MAIN ST E/O FERN RD @ CUL	C	I	.	610	.	.	570
19 DEXTER	76503	00344	IR 344 (AIRPORT RD) E/O SR 7	C	I	620
19 DEXTER	01804	00395	FERN RD SE/O MAIN ST	C	I	190
19 DEXTER	34204	00395	IR 395 (JENNINGS HILL RD) SE/O SR 94	C	I	.	1040	.	.	900
19 DEXTER	34202	0094X	SR 94 NE/O IR 395 (JENNINGS HILL RD)	C	I	.	2460	.	.	2100
19 DEXTER	34208	0094X	SR 94 NW/O IR 395 (JENNINGS HILL RD)	C	I	.	2970	.	.	2790
19 DEXTER	01402	01746	CHARLESTON RD 0.15 MI NE/O PARK ST @ CUL	C	I	.	400	.	.	.
19 DEXTER	01101	01758	PINE ST N/O ZIONS HILL RD	C	I	980
19 DEXTER	01308	01758	LINCOLN ST NW/O SR 7 (SPRING ST)@BR#3978	C	I	1720
19 DEXTER	05706	01763	HIGHLAND AVE SW/O GROVE ST	C	I	.	980	.	.	.
19 DEXTER	05705	01767	GROVE ST S/O HIGHLAND AVE	C	I	.	1450	.	.	.
19 DEXTER	01603	01773	LIBERTY ST E/O SR 23 (MAIN ST)	C	I	400
19 DEXTER	03307	01773	LIBERTY ST W/O SR 7 (SPRING ST)	C	I	.	1180	.	.	.
19 DEXTER	00107	01775	CENTER ST W/O WATER ST @ BR# 0900	C	I	270

2006 Maine Transportation Count Book

Penobscot

TOWN	STATION	ROAD	LOCATION	TYPE	GROUP	AADT02	AADT03	AADT04	AADT05	AADT06
19 DEXTER	03803	01784	CROSS ST E/O SR 7 (CHURCH ST)	S	I	840
19 DEXTER	63104	02337	IR 2337(GARLAND RD) SE/O SR7(CORINNA RD)	A		2610	2600	2640	2510	2480
19 DIXMONT	31905	0007X	SR 7 S/O SR 9/US 202	C	I	1210	1230	.	.	1130
19 DIXMONT	31901	0007X	SR 7 N/O SR 9/US 202	C	I	.	1340	.	.	1160
19 DIXMONT	66300	0007X	SR 7 @ JACKSON TL	C	I	.	1220	.	.	940
19 DIXMONT	66904	0007X	SR 7 SE/O IR 434 (NORTH RD)	C	I	.	1530	.	.	1100
19 DIXMONT	66908	0007X	SR 7 NW/O IR 432 (TROY CENTER RD)	C	I	.	1710	.	.	1160
19 DIXMONT	31907	0009X	SR 9/US 202 W/O SR 7	C	II	1800	1850	1860	.	2250
19 DIXMONT	31903	0009X	SR 9/US 202 E/O SR 7	C	II	.	2950	.	.	2970
19 DIXMONT	66402	0009X	SR 9/US 202 NE/O SR 143	C	II	.	2430	.	.	2580
19 DIXMONT	66907	00432	IR 432 (TROY CTR RD) W/O SR 7	C	I	260
19 DIXMONT	42703	00434	IR 434 (NORTH RD) E/O IR 520 @ BR# 3357	C	I	350
19 DIXMONT	66903	00434	IR 434 (NORTH RD) E/O SR 7	C	I	310
19 DIXMONT	42807	00438	IR 438 W/O IR 1208 (PW) @ BR# 0842	C	I	80
19 DIXMONT	66503	00444	IR 444(KENNEBEC RD) E/O IR 541(HOG HILL)	C	I	.	400	.	.	350
19 DIXMONT	66404	00541	IR 541 (KENNEBEC RD) SE/O SR 9/US 202	C	I	.	520	.	.	490
19 DIXMONT	66901	01137	IR 1137 (HOPKINS RD) N/O SR 7	C	I	50
19 DIXMONT	66408	0143X	SR 143 NW/O IR 1807 (MILL STREAM RD)	C	I	.	570	.	.	540
19 DREW PLT	38103	00855	IR 855 (POTTER HILL RD) E/O SR 171	C	I	.	.	20	.	.
19 DREW PLT	38101	0171X	SR 171 N/O IR 855 (POTTER HILL RD)	C	II	.	.	110	.	.
19 DREW PLT	38700	0171X	SR 171 @ PRENTISS PLT TL	C	II	.	.	100	.	.
19 EAST MILLINOCKET	00107		CHURCH ST W/O SPRUCE ST	C	I	.	.	410	.	.
19 EAST MILLINOCKET	00301		OAK ST N/O MAIN ST	C	I	.	.	960	.	.
19 EAST MILLINOCKET	00307		MAIN ST W/O OAK ST	C	I	.	.	400	.	.
19 EAST MILLINOCKET	00802		BIRCH ST NE/O HIGH ST	C	I	.	.	320	.	.
19 EAST MILLINOCKET	00806		BIRCH ST SW/O HIGH ST	C	I	.	.	330	.	.
19 EAST MILLINOCKET	00807		HIGH ST W/O BIRCH ST	C	I	.	.	200	.	.
19 EAST MILLINOCKET	01002		CEDAR ST NE/O HIGH ST	C	I	.	.	260	.	.
19 EAST MILLINOCKET	01206		BEECH ST SW/O PARK ST	C	I	.	.	360	.	.
19 EAST MILLINOCKET	01207		PARK ST W/O BEECH ST	C	I	.	.	530	.	.
19 EAST MILLINOCKET	01302		BEECH ST NE/O HIGH ST	C	I	.	.	160	.	.
19 EAST MILLINOCKET	01307		HIGH ST W/O BEECH ST	C	I	.	.	230	.	.
19 EAST MILLINOCKET	01801		WESTERN AVE N/O SR 11/157 (MAIN ST)	C	I	.	.	510	.	.
19 EAST MILLINOCKET	02107		CHURCH ST W/O ELM ST	C	I	.	.	340	.	.

County **2006 Maine Transportation Count Book**

Penobscot											
TOWN	STATION	ROAD	LOCATION	TYPE	GROUP	AADT02	AADT03	AADT04	AADT05	AADT06	
19	EAST MILLINOCKET	02302	SPRING ST NE/O GROVE ST	C	I	.	.	500	.	.	
19	EAST MILLINOCKET	02502	WESTERN AVE NE/O COUNTY ST	C	I	.	.	380	.	.	
19	EAST MILLINOCKET	02503	COUNTY ST E/O WESTERN AVE	C	I	.	.	170	.	.	
19	EAST MILLINOCKET	02604	PARK ST SE/O CONE ST	C	I	.	.	180	.	.	
19	EAST MILLINOCKET	02801	ELM ST N/O COUNTY RD	C	I	.	.	720	.	.	
19	EAST MILLINOCKET	02803	COUNTY RD E/O ELM ST	C	I	.	.	310	.	.	
19	EAST MILLINOCKET	02807	COUNTY RD W/O ELM ST	C	I	.	.	250	.	.	
19	EAST MILLINOCKET	03007	HIGH ST W/O WESTERN AVE	C	I	.	.	60	.	.	
19	EAST MILLINOCKET	03102	CEDAR ST NE/O NORTH ST	C	I	.	.	60	.	.	
19	EAST MILLINOCKET	03107	NORTH ST W/O CEDAR ST	C	I	.	.	470	.	.	
19	EAST MILLINOCKET	03207	NORTH ST W/O BIRCH ST	C	I	.	.	680	.	.	
19	EAST MILLINOCKET	03302	SPRING ST NE/O NORTH ST	C	I	.	.	140	.	.	
19	EAST MILLINOCKET	03402	PINE ST NE/O HIGH ST	C	I	.	.	140	.	.	
19	EAST MILLINOCKET	03403	HIGH ST E/O PINE ST	C	I	.	.	320	.	.	
19	EAST MILLINOCKET	03406	PINE ST SW/O HIGH ST	C	I	.	.	200	.	.	
19	EAST MILLINOCKET	03407	HIGH ST W/O PINE ST	C	I	.	.	320	.	.	
19	EAST MILLINOCKET	03502	ELM ST NE/O NORTH ST	C	I	.	.	220	.	.	
19	EAST MILLINOCKET	03507	NORTH ST W/O ELM ST	C	I	.	.	520	.	.	
19	EAST MILLINOCKET	03607	ORCHARD ST W/O HATHAWAY ST	C	I	.	.	510	.	.	
19	EAST MILLINOCKET	03706	SPRING ST SW/O PALM ST	C	I	.	.	400	.	.	
19	EAST MILLINOCKET	03807	HIGH ST W/O SPRING ST	C	I	.	.	180	.	.	
19	EAST MILLINOCKET	04006	MAPLE ST SW/O HIGH ST	C	I	.	.	400	.	.	
19	EAST MILLINOCKET	04403	COUNTY RD E/O MAPLE ST	C	I	.	.	300	.	.	
19	EAST MILLINOCKET	04504	CHURCH ST SE/O BIRCH ST	C	I	.	.	690	.	.	
19	EAST MILLINOCKET	04506	BIRCH ST SW/O CHURCH ST	C	I	.	.	570	.	.	
19	EAST MILLINOCKET	04508	CHURCH ST NW/O BIRCH ST	C	I	.	.	600	.	.	
19	EAST MILLINOCKET	04702	INDEPENDENCE LN NE/O HIGH ST	C	I	.	.	290	.	.	
19	EAST MILLINOCKET	04706	INDEPENDENCE LN SW/O HIGH ST	C	I	.	.	390	.	.	
19	EAST MILLINOCKET	04802	PINE ST NE/O PARK ST	C	I	.	.	190	.	.	
19	EAST MILLINOCKET	04902	SCHOOL ST NE/O NORTH ST	C	I	.	.	420	.	.	
19	EAST MILLINOCKET	04907	NORTH ST W/O SCHOOL ST	C	I	.	.	940	.	.	
19	EAST MILLINOCKET	00204	0011X SR 11/157 SE/O OAK ST	C	I	.	.	8310	.	.	
19	EAST MILLINOCKET	00208	0011X SR 11/157 NW/O OAK ST	C	I	.	.	7410	.	.	
19	EAST MILLINOCKET	01403	0011X SR 11/157 (MAIN ST) E/O MAPLE ST (EB+WB)	C	I	.	.	8380	.	.	

County **2006 Maine Transportation Count Book**

Penobscot		STATION	ROAD	LOCATION	TYPE	GROUP	AADT02	AADT03	AADT04	AADT05	AADT06
TOWN											
19	EAST MILLINOCKET	01407	0011X	SR 11/157 (MAIN ST) W/O MAPLE ST	C	I	.	.	8430	.	.
19	EAST MILLINOCKET	01607	0011X	SR 11/157 (MAIN ST) W/O BIRCH ST	C	I	.	.	7970	.	.
19	EAST MILLINOCKET	01907	0011X	SR 11/157 (MAIN ST) W/O CONE ST	C	I	.	.	7080	.	.
19	EAST MILLINOCKET	38008	0011X	SR 11/157 NW/O IR 4028	C	I	.	.	6200	.	.
19	EAST MILLINOCKET	55300	0011X	SR 11 @ GRINDSTONE TL	C	II	.	.	490	.	.
19	EAST MILLINOCKET	00105	01000	SPRUCE ST S/O CHURCH ST	C	I	.	.	820	.	.
19	EAST MILLINOCKET	01105	01000	SPRUCE ST S/O PARK ST	C	I	.	.	1810	.	.
19	EAST MILLINOCKET	00701	01662	ELM ST N/O MAIN ST	C	I	.	.	80	.	.
19	EAST MILLINOCKET	02805	01662	ELM ST S/O COUNTY ST	C	I	.	.	730	.	.
19	EAST MILLINOCKET	00101	01663	SPRUCE ST N/O CHURCH ST	C	I	.	.	700	.	.
19	EAST MILLINOCKET	01401	01663	MAPLE ST N/O SR 11/157 (MAIN ST)	C	I	.	.	580	.	.
19	EAST MILLINOCKET	04406	01663	MAPLE ST SW/O COUNTY RD	C	I	.	.	440	.	.
19	EAST MILLINOCKET	01601	01666	BIRCH ST N/O SR 11/157 (MAIN ST)	C	I	.	.	610	.	.
19	EAST MILLINOCKET	01701	01667	CEDAR ST N/O SR 11/157 (MAIN ST)	C	I	.	.	730	.	.
19	EAST MILLINOCKET	01901	01669	CONE ST N/O SR 11/157 (MAIN ST)	C	I	.	.	960	.	.
19	EAST MILLINOCKET	04407	01686	COUNTY RD W/O MAPLE ST	C	I	.	.	340	.	.
19	EAST MILLINOCKET	01107	01688	PARK ST W/O SPRUCE ST	C	I	.	.	670	.	.
19	EAST MILLINOCKET	01203	01688	PARK ST E/O BEECH ST	C	I	.	.	890	.	.
19	EAST MILLINOCKET	00507	01689	CHURCH ST W/O INDEPENDENCE LN	C	I	.	.	790	.	.
19	EAST MILLINOCKET	02403	01689	CHURCH ST E/O CONE ST	C	I	.	.	570	.	.
19	EAST MILLINOCKET	00707	02198	MAIN ST W/O ELM ST	C	I	.	.	330	.	.
19	EAST MILLINOCKET	03602	02202	HATHAWAY ST NE/O ORCHARD ST	C	I	.	.	400	.	.
19	EAST MILLINOCKET	00202	02270	OAK ST NE/O SR 11/157	C	I	.	.	1080	.	.
19	EAST MILLINOCKET	00502	02832	INDEPENDENCE LN NE/O CHURCH ST	C	I	.	.	470	.	.
19	EDDINGTON	34404	0009X	SR 9 SE/O IR 632 (ROOKS RD)	C	II	.	.	5840	.	.
19	EDDINGTON	34408	0009X	SR 9 NW/O IR 632 (ROOKS RD)	C	II	.	.	5560	.	.
19	EDDINGTON	49003	0009X	SR 9 E/O IR 4008 (HILL ST)	S	II	.	7110	6610	7440	6860
19	EDDINGTON	49006	0009X	SR 9/178 SW/O SR 178	C	I	.	10600	.	.	10280
19	EDDINGTON	49604	0009X	SR 9(MAIN RD) SE/O SR 46(JARVIS GORE DR)	S	II	.	6890	.	7120	6820
19	EDDINGTON	49608	0009X	SR 9 NW/O SR 46 @ BR# 5107	T	II	.	5820	.	.	5460
19	EDDINGTON	63008	0009X	SR 9 NW/O IR 615 (CHEMO POND RD)	C	II	.	6090	.	.	6290
19	EDDINGTON	40005	0046X	SR 46 S/O IR 653 (BLACKCAP RD)	S	II	2270
19	EDDINGTON	48202	0046X	SR 46 NE/O IR 657 (SWEET HILL RD)	C	II	.	2650	.	.	2280
19	EDDINGTON	49605	0046X	SR 46 (JARVIS GORE DR) S/O SR 9(MAIN RD)	T	I	.	2680	.	.	2200

2006 Maine Transportation Count Book

Penobscot

	TOWN	STATION	ROAD	LOCATION	TYPE	GROUP	AADT02	AADT03	AADT04	AADT05	AADT06
19	EDDINGTON	48603	00612	IR 612 (DAVIS RD) E/O SR 9 @ BR# 5545	C	II	.	350	.	.	350
19	EDDINGTON	44301	00613	IR 613(DAVIS RD) N/O IR612(DAVIS)@BR5546	C	II	230
19	EDDINGTON	63002	00615	IR 615 (CHEMO POND RD) NE/O SR 9	C	II	.	300	.	.	320
19	EDDINGTON	62803	00629	IR 629 (LEVENSELLER RD) E/O IR 631	C	I	.	570	.	.	500
19	EDDINGTON	34504	00631	IR 631(CLEWLEYVILLE RD) SE/O SR 9/178	C	I	.	1470	.	.	1550
19	EDDINGTON	62804	00631	IR 631 (CLEWLEYVILLE RD) SE/O IR 629	C	I	.	930	.	.	920
19	EDDINGTON	34406	00632	IR 632 (ROOKS RD) SW/O SR 9	C	I	.	670	.	.	790
19	EDDINGTON	47201	00640	IR 640 (MERRILL RD) N/O SR 9 (MAIN RD)	T	I	260
19	EDDINGTON	49001	0178X	SR 178 N/O IR 4008 (HILL ST) (N JCT)	B	I	.	.	.	4680	.
19	EDINBURG	39300	0116X	SR 116 @ HOWLAND TL	C	I	.	.	440	.	.
19	ENFIELD	00601	0002X	US 2/SR 6/116 N/O OLD COUNTY RD (N JCT)	C	I	.	.	3510	.	.
19	ENFIELD	00605	0002X	US 2/SR 6/116 S/O OLD COUNTY RD (N JCT)	C	I	.	.	3140	.	.
19	ENFIELD	00701	0002X	US 2/SR 6/116 (MAIN RD) N/O SR 155	T	I	.	.	3300	.	.
19	ENFIELD	00705	0002X	US 2 (MAIN RD) S/O SR 155 (HAMMETT RD)	T	I	.	.	1830	.	.
19	ENFIELD	00905	0002X	US 2 S/O OLD COUNTY RD (S JCT)	C	I	.	.	2040	.	.
19	ENFIELD	42002	0002X	US 2/SR 6/116 NE/O SR 188 @ LINCOLN TL	C	I	.	.	3400	.	.
19	ENFIELD	42006	0002X	US 2/SR 6/116 SW/O SR 188	C	I	.	.	3500	.	.
19	ENFIELD	00102	0006X	SR 6/116/155(ENFIELD) NE/O OLD COUNTY RD	C	I	.	.	4320	.	.
19	ENFIELD	00107	0006X	SR6/116/155 W/O OLD COUNTY RD@HOWLAND TL	C	I	.	.	5560	.	.
19	ENFIELD	00707	0006X	SR 6/116/155(BRIDGE ST) W/O US2(MAIN RD)	T	I	.	.	4410	.	.
19	ENFIELD	41503	00577	IR 577 (OLD HATCHERY RD) E/O SR 188	C	III	.	.	300	.	.
19	ENFIELD	41506	00577	IR 577 (CARIBOU RD) SW/O SR 188	C	I	.	.	900	.	.
19	ENFIELD	00507	01010	MILL ST W/O OLD COUNTY RD	C	I	.	.	100	.	.
19	ENFIELD	00801	01012	EMERSON ST N/O SR 6/116/155 (ENFIELD RD)	C	I	.	.	210	.	.
19	ENFIELD	00703	0155X	SR 155 (HAMMETT RD) E/O US 2 (MAIN RD)	T	II	.	.	1890	.	.
19	ENFIELD	41403	0155X	SR 155/188 E/O IR 991 (BRITTANY LN)	C	II	.	.	1490	.	.
19	ENFIELD	41407	0155X	SR 155 W/O SR 188	C	II	.	.	1660	.	.
19	ENFIELD	41800	0155X	SR 155 @ LINCOLN TL	C	II	.	.	1400	.	.
19	ENFIELD	00101	01699	OLD COUNTY RD N/O SR 6/116/155 (ENFIELD)	C	I	.	.	1120	.	.
19	ENFIELD	00105	01699	OLD COUNTY RD S/O SR 6/116/155 (ENFIELD)	C	I	.	.	1010	.	.
19	ENFIELD	00201	01700	OLD COUNTY RD N/O EMMETT ST	C	I	.	.	1080	.	.
19	ENFIELD	00606	01700	OLD COUNTY RD SW/O US 2/SR 6 (COUNTY RD)	C	I	.	.	470	.	.
19	ENFIELD	41401	0188X	SR 188 N/O SR 155	C	I	.	.	560	.	.
19	ENFIELD	41504	0188X	SR 188 SE/O IR 577 (HATCHERY RD)	C	I	.	.	1370	.	.

2006 Maine Transportation Count Book

Penobscot

TOWN	STATION	ROAD	LOCATION	TYPE	GROUP	AADT02	AADT03	AADT04	AADT05	AADT06
19 ENFIELD	42004	0188X	SR 188 SE/O US 2/SR 6	C	I	.	.	540	.	.
19 ENFIELD	49200	0188X	SR 188 @ LOWELL TL	C	I	.	.	680	.	.
19 ENFIELD	42008	02309	IR 2309 NW/O US 2/SR 6/116	C	I	.	.	180	.	.
19 ETNA	65803	0002X	US 2/SR 100 E/O SR 143	C	II	.	2200	.	.	2010
19 ETNA	65807	0002X	US 2/SR 100 W/O SR 143	C	II	.	2290	.	.	2050
19 ETNA	32207	0069X	SR 69 W/O SR 143 (S JCT)	C	I	.	780	.	.	650
19 ETNA	52102	0095S	I-95 (SB) N/O ON RAMP FROM SR 143	I	ATR52104	.	9510	.	9210	.
19 ETNA	52104	0095S	I-95 (SB) N/O OFF RAMP TO SR 143	I	ATR52104	.	9900	.	.	.
19 ETNA	52101	0095X	I-95 (NB) N/O OFF RAMP TO SR 143	I	ATR52103	.	9720	.	9270	.
19 ETNA	52103	0095X	I-95 (NB) N/O ON RAMP FROM SR 143	I	ATR52103	.	9820	.	.	.
19 ETNA	32201	0143X	SR 143 N/O SR 69 (N JCT)	C	I	.	990	.	.	1030
19 ETNA	32205	0143X	SR 143 S/O SR 69 (S JCT)	C	I	.	1400	.	.	1300
19 ETNA	65801	0143X	SR 143 N/O US 2/SR 100	C	I	.	870	.	.	970
19 ETNA	77405	0143X	SR 143 S/O IR 1234 (MARCHO RD)	C	I	.	970	.	.	1000
19 EXETER	35003	0011X	SR 11/43 E/O IR 365 (GARLAND RD)	C	I	.	1450	.	.	1400
19 EXETER	35005	0011X	SR 11/43 (STETSON RD) S/O IR 348	C	I	.	2360	.	.	2220
19 EXETER	73307	0011X	SR 11/43 W/O IR 367 (STETSON RD)	C	I	.	1430	.	.	1380
19 EXETER	76207	0011X	SR 11/43 W/O IR 383 (MATTESON) @BR# 5824	C	I	.	1490	.	.	1220
19 EXETER	35007	00348	IR 348 (CIDER HILL RD) W/O SR 11/43	C	I	.	290	.	.	210
19 EXETER	73708	00351	IR 351 (EXETER MILLS) NW/O IR 361(EATON)	C	I	.	310	.	.	280
19 EXETER	34901	00365	IR 365(GARLAND) N/O IR 373(VALLEY AV RD)	C	I	.	700	.	.	670
19 EXETER	35001	00365	IR 365 (GARLAND RD) N/O SR 11/43	C	I	.	1330	.	.	1460
19 EXETER	73305	00367	IR 367 (STETSON RD) S/O SR 11/43	C	I	.	730	.	.	750
19 EXETER	73506	00367	IR 367 (STETSON) SW/O IR 350 (TIBBETTS)	C	I	.	500	.	.	530
19 EXETER	73604	00377	IR 377 (BUTTERFIELD) SE/O IR 374(FOGLER)	C	I	.	850	.	.	850
19 EXETER	76205	00383	IR 383 (MATTESON) S/O SR 11/43 @BR# 0838	C	I	50
19 GARLAND	72803	00326	IR 326 (CENTER) E/O IR 1735(OLIVER HILL)	C	I	380	.	.	.	820
19 GARLAND	72903	00336	IR 336 (CAMPBELL RD) E/O SR 94	C	I	.	320	.	.	320
19 GARLAND	34305	00373	IR 373 (AVENUE RD) S/O IR 1156 @ BR#0836	C	I	730
19 GARLAND	34307	0094X	SR 94 W/O IR 1156	C	I	.	1980	.	.	2010
19 GARLAND	56203	0094X	SR 94 E/O IR 328 (UPR GARLAND RD)	C	I	.	1400	.	.	1170
19 GARLAND	72905	0094X	SR 94 S/O IR 336 (CAMPBELL RD)	C	I	1640
19 GARLAND	73003	0094X	SR 94 E/O IR 2356 (JONES RD) @ BR# 5979	C	I	.	1330	.	.	1110
19 GARLAND	72801	01735	IR 1735 (OLIVER HILL RD) N/O IR 326	C	I	.	560	.	.	750

2006 Maine Transportation Count Book

Penobscot

TOWN	STATION	ROAD	LOCATION	TYPE	GROUP	AADT02	AADT03	AADT04	AADT05	AADT06
19 GARLAND	72901	01735	IR 1735 (OLIVER HILL RD) N/O SR 94	C	I	.	1080	.	.	1230
19 GARLAND	73005	02356	IR 2356 (JONES RD) S/O SR 94 @ BR# 3646	C	I	870
19 GLENBURN	56904	00493	IR 493 (PUSHAW RD) SE/O SR 221	C	I	.	1090	.	.	.
19 GLENBURN	71501	00493	IR 493 (PUSHAW RD) N/O IR 500 (LAKEVIEW)	C	I	.	2220	.	.	2070
19 GLENBURN	31003	00500	IR 500 (LAKEVIEW RD) E/O SR 221	C	I	.	1800	.	.	1400
19 GLENBURN	31006	00500	IR 500 (LANCASTER BROOK RD) SW/O SR 221	C	I	.	1560	.	.	1320
19 GLENBURN	74406	00518	IR 518 (MCCARTY RD) SW/O SR 15	C	I	.	1690	.	.	.
19 GLENBURN	31001	0221X	SR 221 N/O IR 500 (LAKEVIEW RD)	C	I	.	3630	.	3320	2830
19 GLENBURN	56901	0221X	SR 221 (HUDSON RD) N/O IR 493(PUSHAW RD)	C	I	.	2810	.	.	2210
19 GRAND FALLS TWP	45401	00731	IR 731 (BRYANT RIDGE RD) N/O SR 188	C	I	.	.	50	.	.
19 GRAND FALLS TWP	45405	00731	IR 731(LORD BK RD) S/O IR 985 @ BR# 3072	C	I	.	.	40	.	.
19 GRAND FALLS TWP	80600	01557	IR 1557(MAIN) @ PASSADUMKEAG RV BR# 3918	C	I	.	.	180	.	.
19 GRAND FALLS TWP	45407	0188X	SR 188 W/O IR 731(LORD BK RD)	C	I	.	.	220	.	.
19 GREENBUSH	46001	0002X	US2 N/O IR2000(MILITARY)@PASSADUMKEAG TL	C	I	.	1830	1770	.	.
19 GREENBUSH	46203	00572	IR 572 (E RIDGE) E/O IR 2000 (MILITARY)	C	I	.	470	.	.	.
19 GREENBUSH	63602	00574	IR 574(GREENFIELD)NE/O IR 583(CARDVILLE)	C	I	.	1260	.	.	.
19 GREENBUSH	79403	00574	IR 574(GREENFIELD) E/O IR 579(SPRING BR)	C	I	.	750	.	.	.
19 GREENBUSH	63608	00583	IR 583(CARDVILLE)NW/O IR 574(GREENFIELD)	C	I	.	790	.	.	.
19 GREENBUSH	46201	02000	IR 2000(MILITARY RD) N/O IR 572(E RIDGE)	C	I	.	250	.	.	.
19 GREENBUSH	46302	02000	IR 2000 (MILITARY) NE/O US 2	C	I	.	750	.	.	.
19 GREENFIELD	31202	00574	IR574(GREENFIELD) NE/O IR733(CROCKERTURN	C	I	.	360	.	.	.
19 GREENFIELD	31800	00600	IR 600 (COUNTY RD) @ MILFORD TL	C	II	.	80	.	.	.
19 GREENFIELD	32302	00600	IR 600 (COUNTY RD) NE/O IR 1003 @BR#5605	C	II	.	70	.	.	.
19 GREENFIELD	31205	00733	IR733(CROCKER TURN)S/O IR574(GREENFIELD)	C	I	.	310	.	.	.
19 GREENFIELD	32304	01003	(PW) IR 1003 (PICKEREL POND) SE/O IR 600	C	II	.	30	.	.	.
19 GRINDSTONE TWP	40800	0011X	SR 11 @ SOLDIERTOWN TWP TL	C	II	.	.	210	.	.
19 HAMPDEN	00102	0001A	US 1A/SR 9 (MAIN RD) NE/O COLD BROOK RD	C	I	.	6780	.	.	7220
19 HAMPDEN	00106	0001A	US 1A/SR 9 (MAIN RD) SW/O DUDLEY ST	C	I	.	6540	.	7280	7210
19 HAMPDEN	00402	0001A	US1A/SR9(MAIN RD) NE/O OLD COUNTY RD(SJ)	C	I	.	5790	.	.	5800
19 HAMPDEN	00406	0001A	US 1A/SR 9 SW/O OLD COUNTY RD (S JCT)	C	I	.	6470	.	.	6850
19 HAMPDEN	00501	0001A	US 1A/SR 9 (MAIN) N/O SR 9 (WESTERN AVE)	C	I	.	6560	.	.	6880
19 HAMPDEN	00505	0001A	US 1A (MAIN) S/O SR 9 (WESTERN AVE)	C	I	.	12060	.	.	.
19 HAMPDEN	01401	0001A	US 1A (MAIN RD) N/O KENNEBEC RD	C	I	.	11490	.	.	.
19 HAMPDEN	01405	0001A	US 1A (MAIN RD) S/O KENNEBEC RD	C	I	.	8670	.	.	8960

County **2006 Maine Transportation Count Book**

Penobscot		STATION	ROAD	LOCATION	TYPE	GROUP	AADT02	AADT03	AADT04	AADT05	AADT06
TOWN											
19	HAMPDEN	01805	0001A	US 1A/SR 9(MAIN) S/O OLD COUNTY RD(N JCT	C	I	.	7680	.	.	7940
19	HAMPDEN	02006	0001A	US 1A/SR 9 (MAIN RD) SW/O PATTERSON ST	C	I	.	5860	.	.	6080
19	HAMPDEN	51500	0001A	US 1A @ WINTERPORT TL	C	I	.	7380	7410	7710	8030
19	HAMPDEN	00207	0009X	SR 9/US 202 W/O EMERSON MILL RD	C	I+II	.	3320	.	.	3590
19	HAMPDEN	00507	0009X	SR 9 (WESTERN AVE) W/O US 1A (MAIN RD)	C	I	.	10790	.	.	11370
19	HAMPDEN	00703	0009X	SR 9 (WESTERN AVE) E/O US 202	C	I	.	11040	.	.	.
19	HAMPDEN	00707	0009X	SR 9/US 202 (WESTERN AVE) W/O US 202	C	I	.	9000	8970	.	9070
19	HAMPDEN	00807	0009X	SR 9/US 202 (WESTERN AVE) W/O MAYO RD	C	I	.	4530	.	.	4610
19	HAMPDEN	01606	0009X	US 1A/SR 9 (MAIN ST) SW/O SCHOOLHOUSE LN	C	I	.	6720	.	.	.
19	HAMPDEN	52303	0009X	SR 9/US 202 E/O IR 695 (THOMAS RD)	C	I+II	.	3040	.	.	3120
19	HAMPDEN	52306	0009X	SR 9/US 202 SW/O IR 2377 (UNNAMED RD)	C	I+II	.	2530	.	.	2760
19	HAMPDEN	01207	00444	KENNEBEC RD W/O MAYO RD	C	I	.	4700	.	.	4680
19	HAMPDEN	01307	00444	KENNEBEC RD W/O MONROE RD	C	I	2410
19	HAMPDEN	52002	00444	IR 444 (KENNEBEC RD) NE/O SR 69	C	I	.	630	.	.	540
19	HAMPDEN	52006	00444	IR 444 (KENNEBEC RD) SW/O SR 69	M	I	.	800	.	650	660
19	HAMPDEN	00208	00482	EMERSON MILL RD NW/O IR 2808	C	I	.	1720	.	.	1860
19	HAMPDEN	01507	00532	MEADOW RD W/O CANAAN RD	C	I	.	680	.	.	630
19	HAMPDEN	00908	00553	COLD BROOK RD NW/O US 202	C	I	.	7160	.	.	6870
19	HAMPDEN	78204	00553	IR 553 (COLD BROOK RD) SE/O I-95 RAMPS	C	I	.	7540	.	.	7180
19	HAMPDEN	01508	00663	CANAAN RD NW/O MEADOW RD	C	I	.	500	.	.	950
19	HAMPDEN	01305	00675	MONROE RD S/O KENNEBEC RD	C	I	.	2370	.	.	2260
19	HAMPDEN	44706	00675	IR 675 (MONROE RD) SW/O IR 670 @ TL	M	I	.	.	.	1740	.
19	HAMPDEN	01105	00693	BACK WINTERPORT RD S/O KENNEBEC RD	C	I	.	1830	.	.	1800
19	HAMPDEN	78306	00693	IR 693(BACK WINTERPORT) SW/O IR672(BAKER	M	I	.	1490	.	1630	1300
19	HAMPDEN	44608	0069X	SR 69 NW/O IR 532 (MEADOW RD)	M	I	.	.	.	1800	.
19	HAMPDEN	52004	0069X	SR 69 SE/O IR 444 (KENNEBEC RD)	M	I	.	1440	.	1500	1490
19	HAMPDEN	52008	0069X	SR 69 NW/O IR 444 (KENNEBEC RD)	C	I	.	1610	.	.	1500
19	HAMPDEN	51902	0095S	I-95 (SB) N/O ON RAMP FROM COLD BROOK RD	I	ATR52104	.	9620	.	10100	.
19	HAMPDEN	51904	0095S	I-95 (SB) N/O OFF RAMP TO COLD BROOK RD	I	ATR52104	.	14430	.	14560	.
19	HAMPDEN	51901	0095X	I-95 (NB) N/O OFF RAMP TO COLD BROOK RD	I	ATR52103	.	10060	.	9620	.
19	HAMPDEN	51903	0095X	I-95 (NB) N/O ON RAMP FROM COLD BROOK RD	I	ATR52103	.	14000	.	13430	.
19	HAMPDEN	52308	02018	IR 2018(SHAW HILL) NW/O IR 2377(UNNAMED)	C	I	.	780	.	.	700
19	HAMPDEN	00711	0202S	US 202 (SB) N/O SR 9/US 202(WESTERN AVE)	C	I	6440
19	HAMPDEN	00912	0202S	US 202 (SB) NE/O COLD BROOK RD	C	I	4490

2006 Maine Transportation Count Book

Penobscot

TOWN	STATION	ROAD	LOCATION	TYPE	GROUP	AADT02	AADT03	AADT04	AADT05	AADT06
HAMPDEN	00701	0202X	US 202 (NB) N/O SR 9/US 202(WESTERN AVE)	C	I	.	12970	.	.	6200
HAMPDEN	00902	0202X	US 202 (NB) NE/O COLD BROOK RD	C	I	.	9490	.	.	4490
HAMPDEN	01002	0202X	US 202 NE/O PENOBSCOT MEADOW DR	T	I	.	.	.	9610	.
HAMPDEN	01006	0202X	US 202 SW/O MECAW RD@ RR OVERPASS	T	I	9680	9430	.	8670	9460
HAMPDEN	00206	02807	PATTERSON RD SW/O SR 9/US 202	C	I	.	1430	.	.	1520
HAMPDEN	01107	70444	KENNEBEC RD W/O BACK WINTERPORT RD	C	I	.	3010	.	.	3330
HAMPDEN	01407	70444	KENNEBEC RD W/O US 1A (MAIN RD)	C	I	.	2050	.	.	2170
HAMPDEN	00904	70553	COLD BROOK RD SE/O US 202	C	I	.	1930	.	.	2070
HAMPDEN	01201	70677	MAYO RD N/O KENNEBEC RD	C	I	.	3490	.	.	3430
HAMPDEN	00401	70680	OLD COUNTY RD N/O US 1A/SR 9 (MAIN RD)	C	I	.	850	.	.	980
HAMPDEN	01702	70680	OLD COUNTY RD NE/O HAMEL AVE	C	I	.	1200	.	.	1230
HAMPDEN	01806	70680	OLD COUNTY RD SW/O US 1A/SR 9 (MAIN RD)	C	I	.	1530	.	.	1670
HAMPDEN	01906	70680	OLD COUNTY RD SW/O WHEELDON HGTS	C	I	.	1000	.	.	1100
HAMPDEN	01904	71963	WHEELDON HGTS SE/O OLD COUNTY RD	C	I	.	130	.	.	170
HAMPDEN	01008	71982	MECAW RD NW/O US 202	T	I	.	2580	.	2320	2530
HAMPDEN	00308	72210	SUNSET AVE NW/O US 1A/SR 9 (MAIN RD)	C	I	.	580	.	.	690
HAMPDEN	02108	72647	DAISEY LN NW/O US 1A/SR 9 (MAIN RD)	C	I	.	480	.	.	500
HAMPDEN	01004	72655	PENOBSCOT MEADOW DR SE/O MECAW RD	T	I	.	.	.	1860	.
HERMON	31304	0002X	US 2/SR 100 SE/O IR 1846 (PW)	C	II	8940
HERMON	31307	0002X	US 2/SR 100 W/O IR 425 (OLD STAGE RD)	C	II	.	7920	.	9390	.
HERMON	31403	0002X	US 2/SR 100 E/O IR 553 (COLD BROOK) @BR	C	I	.	6990	.	.	7290
HERMON	31408	0002X	US 2/SR 100 NW/O IR 476 (BOG RD)	C	II	.	8550	.	.	9140
HERMON	74503	0002X	US 2/SR 100 E/O IR 1213	C	II	.	7470	.	.	7900
HERMON	77803	0002X	US 2/SR 100 E/O IR 421 (BLACK STREAM RD)	C	II	.	4140	.	.	4500
HERMON	31703	00404	IR 404 (FULLER RD) E/O IR 423 (WING RD)	C	I	.	1390	.	.	1610
HERMON	31707	00404	IR 404 (FULLER RD) W/O IR 423 (WING RD)	C	I	.	1340	.	.	1480
HERMON	74704	00404	IR 404 (FULLER) SE/O IR 468 (BILLINGS)	C	I	.	670	.	.	620
HERMON	74801	00417	IR 417 (PINE TREE RD) N/O IR 404(FULLER)	C	I	.	750	.	.	650
HERMON	74805	00421	IR 421 (BLACK STREAM) S/O IR 404(FULLER)	C	I	.	550	.	.	600
HERMON	31701	00423	IR 423 (WING RD) N/O IR 404 (FULLER RD)	C	I	.	1980	.	.	2070
HERMON	31705	00423	IR 423 (WING RD) S/O IR 404 (FULLER RD)	C	I	.	2030	.	.	2210
HERMON	74602	00460	IR 460 (NEW BOSTON RD) NE/O US 2/SR 100	C	I	.	620	.	.	760
HERMON	31302	00468	IR 468 (BILLINGS RD) NE/O IR 1302	C	I	.	3090	.	.	3930
HERMON	74306	00468	IR 468 (BILLINGS RD) SW/O SR 222	C	I	.	3890	.	.	4860

2006 Maine Transportation Count Book

Penobscot

	TOWN	STATION	ROAD	LOCATION	TYPE	GROUP	AADT02	AADT03	AADT04	AADT05	AADT06
19	HERMON	31407	00476	IR 476 (BOG RD) W/O US 2/SR 100	C	II	.	1470	.	.	1780
19	HERMON	77806	00477	IR 477 (SWAN RD) SW/O US 2/ SR 100	C	I	.	410	.	.	420
19	HERMON	55902	00480	IR 480 (ODLIN) NE/O IR 553 (COLD BROOK)	C	I	.	3780	.	.	4530
19	HERMON	31404	00553	IR 553 (COLD BROOK RD) SE/O US 2/SR 100	C	I	.	3250	.	.	3830
19	HERMON	55904	00553	IR 553 (COLD BROOK) SE/O IR 480 (ODLIN)	C	I	.	13500	.	.	10110
19	HERMON	74304	0222X	SR 222 SE/O IR 468 (BILLINGS RD)	C	I	.	7860	.	.	9180
19	HERSEYTOWN TWP	50602	0095S	I-95 (SB) N/O ON RAMP FROM CASEY RD	I	ATR50702	.	2730	.	2170	.
19	HERSEYTOWN TWP	50601	0095X	I-95 (NB) N/O OFF RAMP TO CASEY RD	I	ATR50701	.	2570	.	2210	.
19	HOLDEN	41704	0001A	US 1A SE/O IR 685 @ RR XING	A		.	.	12030	11100	11270
19	HOLDEN	47308	0001A	US 1A NW/O IR 1385 (BLOODS HILL RD)	T	II	.	18200	.	.	15220
19	HOLDEN	49804	0001A	US 1A SE/O IR 635 (BAGADUCE RD)	C	II	.	17880	.	.	16260
19	HOLDEN	49808	0001A	US 1A NW/O IR 635 (SOUTH RD)	C	II	.	19840	.	.	17920
19	HOLDEN	50004	0001A	US 1A SE/O SR 46	M	ATR41704	11830	.	.	11280	.
19	HOLDEN	50504	0001A	US 1A SE/O IR 4002 (COPELAND HILL RD)	C	II	.	20640	.	.	18550
19	HOLDEN	47703	0046X	SR 46 (KIDDER HILL) E/O IR 631(MAN HILL)	T	II	.	3060	.	.	2550
19	HOLDEN	50006	0046X	SR 46 SW/O US 1A	T	II	.	.	.	1660	2040
19	HOLDEN	62708	00629	IR 629 (LEVENSELLER RD) NW/O IR 632	C	I	.	450	.	.	500
19	HOLDEN	34106	00630	IR 630 (EASTERN) SW/O IR 1439 @BR# 5726	C	I	.	1310	.	.	1160
19	HOLDEN	47701	00631	IR 631(MANN HILL) N/O IR1385(BLOODS HILL	T	I	.	890	.	.	820
19	HOLDEN	49704	00631	IR 631 (MANN HILL RD) SE/O IR 632	C	I	.	2000	.	.	1910
19	HOLDEN	49708	00631	IR 631 (MANN HILL RD) NW/O IR 632	C	I	.	1050	.	.	780
19	HOLDEN	49702	00632	IR 632 (CLARK HILL RD) NE/O IR 631	C	I	.	1080	.	.	1270
19	HOLDEN	78808	00634	IR 634 (WISWELL RD) NW/O IR 4002	C	I	.	960	.	.	910
19	HOLDEN	42600	00635	IR 635 (SOUTH RD) @ BR# 5940	M	I	.	.	.	1100	.
19	HOLDEN	49802	00635	IR 635 (BAGADUCE RD) NE/O US 1A	C	I	.	1380	.	.	1540
19	HOLDEN	49806	00635	IR 635 (SOUTH RD) SW/O US 1A	C	I	.	1160	.	.	1290
19	HOLDEN	78706	00636	IR 636 (FIELDS PND) SW/O IR 634(WISWELL)	C	I	.	660	.	.	670
19	HOLDEN	41705	00685	IR 685 (UPR DEDHAM) S/O US 1A@BR#3690	T	I	.	1730	.	1520	1680
19	HOLDEN	47708	01385	IR 1385(BLOODS HILL) N/O IR631(MANN HILL	T	I	320
19	HOLDEN	50506	04002	IR 4002 (COPELAND HILL RD) SW/O US 1A	C	I	.	1160	.	.	990
19	HOLDEN	78806	04002	IR 4002 (COPELAND HILL RD) SW/O IR 634	C	I	.	550	.	.	.
19	HOWLAND	00108	0006X	SR 6/155 (COUNTY RD) NW/O TERRIO ST	C	I	.	.	5400	.	.
19	HOWLAND	00207	0006X	SR 6/155 (LAGRANGE RD) W/O MAXFIELD RD	C	I	.	.	1120	.	.
19	HOWLAND	00405	0006X	SR 6/155 (COFFIN ST) S/O SR 6/155	C	I	.	.	6240	.	.

2006 Maine Transportation Count Book

Penobscot

	TOWN	STATION	ROAD	LOCATION	TYPE	GROUP	AADT02	AADT03	AADT04	AADT05	AADT06
19	HOWLAND	00407	0006X	SR 6/155 (LAGRANGE RD) W/O KEITH ST	C	I	.	.	4390	.	.
19	HOWLAND	00506	0006X	SR 6/155 (LAGRANGE) W/O I-95 (SB) RAMPS	C	I	.	.	1700	.	.
19	HOWLAND	01902	0006X	SR 6/155 (LAGRANGE) NE/O I-95 (NB) RAMPS	C	I	.	.	4210	.	.
19	HOWLAND	69203	0006X	SR 6/155 E/O IR 575	C	I	.	.	1080	.	.
19	HOWLAND	00201	00564	MAXFIELD RD N/O SR 6/155 (LAGRANGE RD)	C	I	.	.	640	.	.
19	HOWLAND	40201	00565	IR 565 (SEBOEIS RD) N/O IR 1704	C	I	.	.	330	.	.
19	HOWLAND	69202	00575	IR 575 NE/O SR 6/155	C	I	.	.	30	.	.
19	HOWLAND	50902	0095S	I-95 (SB) N/O ON RAMP FROM SR 155	I	ATR51005	.	3680	.	3880	.
19	HOWLAND	50904	0095S	I-95 (SB) N/O OFF RAMP TO SR 155	I	ATR51005	.	4200	.	4190	.
19	HOWLAND	50901	0095X	I-95 (NB) N/O OFF RAMP TO SR 155	I	ATR51001	.	3750	.	3870	.
19	HOWLAND	50903	0095X	I-95 (NB) N/O ON RAMP FROM SR 155	I	ATR51001	.	4030	.	4150	.
19	HOWLAND	00104	0116X	SR 116 (EDINBURG RD) SE/O TERRIO ST	C	I	.	.	610	.	.
19	HOWLAND	00606	0116X	COFFIN ST SW/O FRONT ST @ BR	C	I	.	.	3840	.	.
19	HOWLAND	00608	0116X	WATER ST NW/O FRONT ST	C	I	.	.	3040	.	.
19	HOWLAND	01104	0116X	WATER ST SE/O SCHOOL DR	C	I	.	.	1540	.	.
19	HOWLAND	01208	0116X	WATER ST NW/O WILLOW ST	C	I	.	.	1870	.	.
19	HOWLAND	01508	0116X	WATER ST NW/O CROCKER RD	C	I	.	.	910	.	.
19	HOWLAND	01605	0116X	EDINBURG RD S/O SOUTH ST @ CEM	C	I	.	.	540	.	.
19	HOWLAND	40101	0116X	MATTAMISCONTIS RD N/O IR 1704(N HOWLAND)	C	I	.	.	190	.	.
19	HOWLAND	00404	01696	KEITH ST SE/O SR 6/155 (LAGRANGE RD)	C	I	.	.	180	.	.
19	HOWLAND	00305	01697	COFFIN ST S/O SR 6/155 (COUNTY RD)	C	I	.	.	360	.	.
19	HOWLAND	00107	01698	TERRIO ST W/O SR 116 (EDINBURG RD)	C	I	.	.	410	.	.
19	HOWLAND	40107	01704	IR 1704(N HOWLAND RD) W/O MATTAMISCONTIS	C	I	.	.	730	.	.
19	HOWLAND	40207	01704	IR 1704 (NORTH HOWLAND RD) W/O IR 565	C	I	.	.	230	.	.
19	HOWLAND	00603	01705	FRONT ST E/O WATER ST	C	I	.	.	1740	.	.
19	HOWLAND	00907	01720	WILLOW ST W/O PENOBSCOT ST	C	I	.	.	840	.	.
19	HOWLAND	01202	01720	WILLOW ST NE/O WATER ST	C	I	.	.	1040	.	.
19	HOWLAND	01303	01721	VALLEY ST E/O WATER ST	C	I	.	.	120	.	.
19	HOWLAND	01403	01722	CROSS ST E/O WATER ST	C	I	.	.	200	.	.
19	HOWLAND	00408	01899	RIVER ST NW/O COFFIN ST	C	I	.	.	880	.	.
19	HOWLAND	00708	01899	RIVER ST 0.8 MILES NW/O RING ST	C	I	.	.	130	.	.
19	HOWLAND	00901	02131	PENOBSCOT ST N/O YORK ST	C	I	.	.	780	.	.
19	HOWLAND	00905	02131	MAIN ST S/O WILLOW ST	C	I	.	.	1450	.	.
19	HOWLAND	01102	02550	SCHOOL DR NE/O WATER ST	C	I	.	.	110	.	.

2006 Maine Transportation Count Book

Penobscot

	TOWN	STATION	ROAD	LOCATION	TYPE	GROUP	AADT02	AADT03	AADT04	AADT05	AADT06
19	HUDSON	30708	0043X	SR 43 NW/O IR 2537 (HAY RD)	C	I	.	1080	.	.	1060
19	HUDSON	30803	0043X	SR 43 E/O SR 221 @BR# 3984	C	I	.	1690	.	.	1650
19	HUDSON	30808	0043X	SR 43/221 NW/O SR 43	C	I	.	3120	.	.	2790
19	HUDSON	71407	00491	IR 491 (HUDSON HILL RD) W/O SR 221	C	I	.	770	.	.	.
19	HUDSON	30701	0221X	SR 221 N/O SR 43	C	I	.	1950	.	.	1770
19	HUDSON	30804	0221X	SR 221 SE/O SR 43 @BR# 2897	C	I	.	2890	.	.	2460
19	KENDUSKEAG	33603	0015X	SR 15 E/O IR 1843(OHIO ST)	C	I	8250
19	KENDUSKEAG	33704	0015X	SR 15 SE/O IR 347 (HIGGINSVILLE RD)	C	I	.	6310	6810	.	7520
19	KENDUSKEAG	71604	0015X	SR 15 SE/O IR500(LANCASTER BK RD)@BR2967	C	I	.	8820	.	.	.
19	KENDUSKEAG	33708	00347	IR 347 (HIGGINSVILLE RD) NW/O SR 15	C	I	.	200	.	.	.
19	KENDUSKEAG	34606	00486	IR 486 (TOWNHOUSE RD) SW/O IR 488	C	I	.	500	.	.	.
19	KENDUSKEAG	34607	00488	IR 488 (STETSON RD) W/O IR 1127 (MILL)	C	I	.	2460	.	.	.
19	KENDUSKEAG	71602	00500	IR 500 (LANCASTER BK RD) NE/O SR 15	M	I	.	.	.	1460	.
19	KENDUSKEAG	71904	00531	IR 531(MUDGETT) SE/O IR 382 (KENDUSKEAG)	C	I	.	940	.	.	.
19	KINGMAN TWP	38507	00690	IR 690 (LANCASTER RD) W/O SR 170	C	I	.	.	20	.	.
19	KINGMAN TWP	44803	00916	IR 916 (HEMLOCK RD) E/O SR 170	C	I	.	.	90	.	.
19	KINGMAN TWP	38401	00920	IR 920 (BARK ST) N/O SR 170	C	I	.	.	70	.	.
19	KINGMAN TWP	39901	00920	IR 920 (BARK ST) N/O IR 916 (HEMLOCK RD)	C	I	.	.	70	.	.
19	KINGMAN TWP	43302	00924	IR 924 (MILL ST) NE/O SR 170	C	I	.	.	50	.	.
19	KINGMAN TWP	38407	0170X	SR 170 W/O IR 920 (BARK ST)	C	II	.	.	250	.	.
19	KINGMAN TWP	42200	0170X	SR 170 @ MACWAHOC TL	C	II	.	.	400	.	.
19	KINGMAN TWP	43305	0170X	SR 170 S/O IR 924 @ BR# 3742	C	II	.	.	270	.	.
19	KINGMAN TWP	44808	0170X	SR 170 NW/O IR 916 (CROSS ST)	C	II	.	.	320	.	.
19	LAGRANGE	39507	0006X	SR 6/16 W/O IR 587(MEDFORD RD)	C	I	.	.	1670	.	.
19	LAGRANGE	39603	0006X	SR 6/155 E/O SR 16 (BENNOCH RD)	T	I	.	.	1230	.	.
19	LAGRANGE	39608	0006X	SR 6/16(BENNOCH RD) NW/O SR 155(MILL ST)	T	I	.	.	2340	.	.
19	LAGRANGE	41902	0006X	SR 6/155 NE/O IR 576 (TOWN RD) @ BR#2073	C	I	.	.	1420	.	.
19	LAGRANGE	39604	0016X	SR 16 (BENNOCH RD) SE/O SR 6/155	T	I	.	.	1940	.	.
19	LAGRANGE	35400	00540	IR 540 (S LANCASTER RD) @ BR# 0855	C	I	.	.	100	.	.
19	LAGRANGE	41903	00576	IR 576 (TOWN RD) E/O SR 6/155	C	I	.	.	130	.	.
19	LAGRANGE	39501	00587	IR 587 (MEDFORD RD) N/O SR 6/16	C	I	.	.	320	.	.
19	LAGRANGE	39606	0155X	SR 155 (MILL ST) SW/O SR 16 (BENNOCH RD)	T	I	.	.	900	.	.
19	LAKEVILLE	37803	00696	IR 696(GETCHELL MTN RD) E/O IR950@BR0867	C	II	.	.	20	.	.
19	LAKEVILLE	37705	00715	IR 715 (BOTTLE LAKE) S/O IR 950	C	II	.	.	270	.	.

2006 Maine Transportation Count Book

County

Penobscot

TOWN	STATION	ROAD	LOCATION	TYPE	GROUP	AADT02	AADT03	AADT04	AADT05	AADT06
19 LAKEVILLE	37606	00863	IR 863 (DEPOT) SW/O IR 715 (BOTTLE LAKE)	C	II	.	.	130	.	.
19 LAKEVILLE	37804	00950	IR 950 (DUCK LAKE RD) SE/O IR 696	C	II	.	.	110	.	.
19 LEE	39707	0006X	SR 6 W/O IR 730 (LEE RD)	C	II	.	.	2690	.	.
19 LEE	43504	0006X	SR 6 SE/O SR 168 @ BR# 5417	C	II	.	.	3700	.	.
19 LEE	43508	0006X	SR 6 NW/O SR 168	C	II	.	.	3180	.	.
19 LEE	43607	0006X	SR 6 W/O IR 865	C	II	.	.	2390	.	.
19 LEE	39705	00716	IR 716 (SOUTH RD) S/O SR 6	C	I	.	.	110	.	.
19 LEE	36407	00718	IR 718 (HALF TWP RD) W/O IR 2265	C	II	.	.	280	.	.
19 LEE	43506	00718	IR 718 (HALF TWP RD) SW/O SR 6 @BR# 3177	C	II	.	.	770	.	.
19 LEE	39701	00730	IR 730 (LEE RD) N/O SR 6	C	II	.	.	130	.	.
19 LEE	36505	00752	IR 752 (SKUNK HILL RD) S/O SR 6	C	I	.	.	140	.	.
19 LEE	43601	00865	IR 865 N/O SR 6	C	I	.	.	120	.	.
19 LEE	43502	0168X	SR 168 NE/O SR 6	C	II	.	.	1470	.	.
19 LEE	36405	02265	IR 2265 S/O IR 718 (HALF TWP RD)	C	I	.	.	20	.	.
19 LEVANT	33308	00377	IR 377 (AVENUE RD) NW/O SR 222	C	I	.	1480	.	.	1560
19 LEVANT	74906	00400	IR 400 (GRIFFIN RD) SW/O SR 222	C	I	.	630	.	.	690
19 LEVANT	75002	00400	IR 400 (S LEVANT RD) NE/O IR 413 @ 3064	C	I	.	700	.	.	680
19 LEVANT	33406	00406	IR 406 (LAKE RD) SW/O SR 222	C	I	.	720	.	.	830
19 LEVANT	65105	00413	IR 413 (HORSEBACK) S/O SR 222 @ BR# 5901	C	I	.	630	.	.	620
19 LEVANT	33402	00454	IR 454(PHILLIPS) NE/O IR 484(KENDUSKEAG)	C	I	.	700	.	.	900
19 LEVANT	33401	00484	IR 484 (KENDUSKEAG) N/O IR 454(PHILLIPS)	C	I	.	1410	.	.	1460
19 LEVANT	74102	00486	IR 486 (TOWN HOUSE RD) NE/O SR 222	C	I	.	460	.	.	420
19 LEVANT	74106	00486	IR 486 (PEMBER RD) SW/O SR 222	C	I	.	390	.	.	440
19 LEVANT	33303	00488	IR 488 (STETSON RD) E/O SR 222	C	I	.	1330	.	.	1280
19 LEVANT	33307	0222X	SR 222 W/O IR 377 (AVENUE RD) @ BR# 3594	C	I	.	1830	.	.	1910
19 LEVANT	33404	0222X	SR 222 SE/O IR 484 (KENDUSKEAG RD)	C	I	.	4120	.	.	4570
19 LEVANT	33408	0222X	SR 222 NW/O IR 406 (LAKE RD)	C	I	.	3920	3790	.	4340
19 LEVANT	74108	0222X	SR 222 NW/O IR 486 (PEMBER RD)	C	I	.	2780	.	.	3050
19 LINCOLN	00303	0002X	US 2/SR 6 (W BROADWAY) E/O PARK ST	C	I	.	.	14430	.	.
19 LINCOLN	00306	0002X	US 2/SR 6 (W BROADWAY) SW/O GODING ST	C	I	.	.	12680	.	.
19 LINCOLN	00602	0002X	US 2/SR6(MAIN) NE/O US 2/SR6(W BROADWAY)	C	I	.	.	13880	.	.
19 LINCOLN	01805	0002X	US 2 (MAIN ST) S/O BURTON ST	C	I	.	.	10770	.	.
19 LINCOLN	02001	0002X	US 2 (MAIN ST) N/O SR 6 (LEE ST)	C	I	.	.	5310	.	.
19 LINCOLN	02005	0002X	US 2/SR 6 (MAIN ST) S/O SR 6 (LEE ST)	C	I	.	.	10140	.	.

2006 Maine Transportation Count Book

Penobscot

	TOWN	STATION	ROAD	LOCATION	TYPE	GROUP	AADT02	AADT03	AADT04	AADT05	AADT06
19	LINCOLN	02801	0002X	US 2 (MAIN ST) N/O CLAY ST	C	I	.	.	6990	.	.
19	LINCOLN	03105	0002X	US 2 (MAIN ST) S/O LIBBY ST	C	I	.	.	6520	.	.
19	LINCOLN	03301	0002X	US 2 (MAIN ST) N/O EVERGREEN DR	C	I	.	.	6320	.	.
19	LINCOLN	03802	0002X	US 2/SR 6 NE/O SR 116 (RIVER RD)	C	I	.	.	9600	.	.
19	LINCOLN	03806	0002X	US 2/SR 6/116 SW/O PENOBSCOT VALLEY AVE	C	I	.	.	5050	.	.
19	LINCOLN	03900	0002X	US 2 (MAIN ST) @ CUL	C	I	.	.	3450	.	.
19	LINCOLN	04907	0002X	US 2 (BROADWAY) W/O FLEMING ST	C	I	.	.	13700	.	.
19	LINCOLN	37902	0002X	US 2 NE/O IR 722 @ WINN TL	C	I	.	.	2540	.	.
19	LINCOLN	02002	0006X	SR 6 (LEE ST) NE/O US 2 (MAIN ST)	C	II	.	.	5110	.	.
19	LINCOLN	02402	0006X	SR 6 (LEE ST) NE/O LIBBY ST	C	II	.	.	4880	.	.
19	LINCOLN	02702	0006X	SR 6 (LEE) 0.4 MI NE/O EVERGREEN DR @CUL	C	II	.	.	4060	.	.
19	LINCOLN	04102	0006X	SR 6 (LEE ST) NE/O CUSHMAN ST	C	II	.	.	6160	.	.
19	LINCOLN	36204	0006X	SR 6 SE/O IR 718 (HALF TWP RD)	C	II	.	.	2970	.	.
19	LINCOLN	40403	0006X	SR 6 E/O IR 845 (FROST ST)	C	II	.	.	3530	.	.
19	LINCOLN	36305	00716	IR 716 (CURTIS RD) S/O SR 6	C	I	.	.	330	.	.
19	LINCOLN	36205	00718	IR 718 (HALF TWP RD) S/O SR 6	C	II	.	.	130	.	.
19	LINCOLN	01304	00723	TRANSALPINE RD SE/O SR 155 (HIGH ST)	C	I	.	.	2810	.	.
19	LINCOLN	40402	00845	IR 845 (FROST ST) NW/O SR 6	C	II	.	.	590	.	.
19	LINCOLN	01104	01016	HALE ST SE/O SR 155 (HIGH ST)	C	I	.	.	1030	.	.
19	LINCOLN	04204	01467	MACKENZIE ST SE/O PORTER ST	C	I	.	.	260	.	.
19	LINCOLN	03507	01469	TAYLOR ST W/O MATTANAWCOOK ST	C	I	.	.	1440	.	.
19	LINCOLN	04503	01469	TAYLOR ST E/O FREDERICK ST	C	I	.	.	1550	.	.
19	LINCOLN	03601	01471	KATAHDIN AVE N/O US 2/SR 6 (W BROADWAY)	C	I	.	.	620	.	.
19	LINCOLN	00307	01473	PARK ST (OW) W/O US 2/SR 6 (W BROADWAY)	C	I	.	.	450	.	.
19	LINCOLN	00308	01473	PARK ST NW/O GODIN ST	C	I	.	.	750	.	.
19	LINCOLN	00605	0155X	SR 155 (MAIN ST) S/O SR 6 (W BROADWAY)	C	I	.	.	6550	.	.
19	LINCOLN	00702	0155X	SR 155 (MAIN) NE/O AYER ST	C	I	.	.	6080	.	.
19	LINCOLN	00805	0155X	SR 155 (HIGH ST) S/O CLARK ST	C	I	.	.	5250	.	.
19	LINCOLN	01106	0155X	SR 155 (HIGH ST) SW/O HALE ST	C	I	.	.	5030	.	.
19	LINCOLN	01302	0155X	SR 155 (HIGH ST) NE/O TRANSALPINE RD	C	I	.	.	4780	.	.
19	LINCOLN	01306	0155X	SR 155 (HIGH ST) SW/O TRANSALPINE RD	C	I	.	.	4200	.	.
19	LINCOLN	04706	0155X	SR 155 (HIGH) SW/O PENOBSCOT VALLEY AVE	C	I	.	.	2860	.	.
19	LINCOLN	04104	01603	CUSHMAN ST (OW) SE/O SR 6 (LEE ST)	C	I	.	.	360	.	.
19	LINCOLN	02803	01604	CLAY ST E/O US 2 (MAIN ST)	C	I	.	.	1320	.	.

2006 Maine Transportation Count Book

Penobscot

	TOWN	STATION	ROAD	LOCATION	TYPE	GROUP	AADT02	AADT03	AADT04	AADT05	AADT06
19	LINCOLN	02204	01605	LAKEVIEW ST SE/O SR 6 (LEE ST)	C	I	.	.	920	.	.
19	LINCOLN	04403	01606	PLEASANT ST E/O US 2 (MAIN ST)	C	I	.	.	140	.	.
19	LINCOLN	03103	01608	LIBBY ST E/O US 2 (MAIN ST)	C	I	.	.	460	.	.
19	LINCOLN	03203	01609	HIGHLAND AVE E/O US 2 (MAIN ST)	C	I	.	.	310	.	.
19	LINCOLN	01602	01623	SCHOOL ST NE/O BURTON ST	C	I	.	.	790	.	.
19	LINCOLN	01905	01623	SCHOOL ST S/O MECHANIC ST	C	I	.	.	420	.	.
19	LINCOLN	01803	01625	BURTON ST E/O US 2/SR 6 (MAIN ST)	C	I	.	.	820	.	.
19	LINCOLN	01903	01626	E BROADWAY ST E/O SCHOOL ST	C	I	.	.	370	.	.
19	LINCOLN	01503	01627	MECHANIC ST E/O US 2/SR 6 (MAIN ST)	C	I	.	.	1630	.	.
19	LINCOLN	01403	01628	LAKE ST E/O US 2/SR 6 (MAIN ST)	C	I	.	.	1230	.	.
19	LINCOLN	00803	01634	CLARK ST E/O SR 155 (HIGH ST)	C	I	.	.	800	.	.
19	LINCOLN	00905	01635	EDWARDS ST S/O CLARK ST	C	I	.	.	610	.	.
19	LINCOLN	01202	01635	EDWARDS ST NE/O HALE ST	C	I	.	.	470	.	.
19	LINCOLN	00707	01637	AYER ST W/O SR 155 (HIGH ST)	C	I	.	.	660	.	.
19	LINCOLN	02905	01647	FLEMING ST S/O DEPOT ST	C	I	.	.	3970	.	.
19	LINCOLN	04901	01647	FLEMING ST N/O US 2/SR 6 (W BROADWAY)	C	I	.	.	5790	.	.
19	LINCOLN	02807	01652	DEPOT ST W/O US 2 (MAIN ST)	C	I	.	.	3620	.	.
19	LINCOLN	02907	01652	DEPOT ST W/O FLEMING ST	C	I	.	.	360	.	.
19	LINCOLN	03804	01887	PENOBSCOT VALLEY AVE SE/O US 2/SR 6	C	I	.	.	3170	.	.
19	LINCOLN	03808	01887	SR 116 (RIVER RD) NW/O US 2/SR 6/116	C	I	.	.	5510	.	.
19	LINCOLN	03303	02664	EVERGREEN DR E/O US 2 (MAIN ST)	C	I	.	.	390	.	.
19	LONG A TWP	37302	0011X	SR 11 NE/O IR 1670 @ BR# 3889	C	II+III	.	.	570	.	.
19	LONG A TWP	37306	0011X	SR 11 SW/O IR 1670	C	II+III	.	.	570	.	.
19	LONG A TWP	37305	01670	IR 1670 S/O SR 11	C	II	.	.	80	.	.
19	LOWELL	39200	00725	IR725(TANNERY) @ PASSADUMKEAG RV BR#3527	C	I	.	.	70	.	.
19	LOWELL	45101	00725	IR 725 (ESCATARSIS RD) N/O SR 188	C	I	.	.	50	.	.
19	LOWELL	45106	00725	IR 725 (TANNERY RD) SW/O SR 188	C	I	.	.	170	.	.
19	LOWELL	45104	0188X	SR 188 SE/O IR 725 (TANNERY) @BR# 2906	C	I	.	.	510	.	.
19	LOWELL	45108	0188X	SR 188 NW/O IR 725 (TANNERY RD)	C	I	.	.	560	.	.
19	MATTAWAMKEAG	90002	0002X	US 2 NE/O IR 684 (BACK SETTLEMENT RD)	A		990	950	960	910	920
19	MATTAWAMKEAG	42300	0002X	US 2 @ MATTAWAMKEAG RIVER BRIDGE	C	I	.	.	3440	.	.
19	MATTAWAMKEAG	42302	0002X	US 2 NE/O SR 157	C	I	.	.	1600	.	.
19	MATTAWAMKEAG	42505	0002X	US 2 S/O IR 988 (GREEN RD) @ RR XING #1	C	I	.	.	3240	.	.
19	MATTAWAMKEAG	42303	00686	IR 686 (RIVER RD) E/O US 2	C	I	.	.	260	.	.

2006 Maine Transportation Count Book

Penobscot

	TOWN	STATION	ROAD	LOCATION	TYPE	GROUP	AADT02	AADT03	AADT04	AADT05	AADT06
19	MATTAWAMKEAG	42503	00988	IR 988 (GREEN RD) E/O US 2	C	I	.	.	210	.	.
19	MATTAWAMKEAG	31100	0157X	SR 157 @ MOLUNKUS TL	C	I	1500	.	1470	.	.
19	MATTAWAMKEAG	42308	0157X	SR 157 NW/O US 2	C	I	.	.	1570	.	.
19	MATTAWAMKEAG	42307	01855	IR 1855 (HATHAWAY RD) W/O US 2	C	I	.	.	570	.	.
19	MAXFIELD	35906	00562	IR 562(BUNKER HILL) SW/O IR 564(MEDFORD)	C	I	.	.	100	.	.
19	MAXFIELD	35507	00564	IR 564 (MEDFORD RD) W/O IR 575 @ BR#3396	C	I	.	.	430	.	.
19	MAXFIELD	35908	00564	IR 564(MEDFORD) NW/O IR 562(BUNKER HILL)	C	I	.	.	460	.	.
19	MAXFIELD	35505	00575	IR 575 S/O IR 564	C	I	.	.	20	.	.
19	MAXFIELD	35707	01704	IR 1704 W/O IR 2320 (PW) @ BR# 6158	C	I	.	.	120	.	.
19	MEDWAY	38203	0011X	SR 11/157 E/O IR 2287(HORSESHOE RD)E JCT	C	I	.	.	7460	.	.
19	MEDWAY	38601	0011X	SR 11 N/O SR 157	C	II	.	.	1270	.	.
19	MEDWAY	38607	0011X	SR 11/157 W/O SR 11	C	I	.	.	7260	.	.
19	MEDWAY	40604	0011X	SR 11/157 SE/O IR 2794 (CLARIFIER RD)	C	I	.	.	7790	.	.
19	MEDWAY	40708	0011X	SR 11/157 NW/O MEDWAY MIDDLE SCHOOL DR	C	I	.	.	8440	.	.
19	MEDWAY	54506	00649	IR 649 (TURNPIKE RD) SW/O SR 116	C	I	.	.	530	.	.
19	MEDWAY	38307	00828	IR 828 (POWERVILLE) W/O SR 116 @BR# 0880	C	I	.	.	380	.	.
19	MEDWAY	50702	0095S	I-95 (SB) @ SR 116 UNDERPASS	A	ATR50702	3320	3370	3370	3190	.
19	MEDWAY	50704	0095S	I-95 (SB) N/O ON RAMP FROM SR 157	I	ATR50702	.	2150	.	2020	.
19	MEDWAY	50706	0095S	I-95 (SB) N/O OFF RAMP TO SR 157	I	ATR50702	.	2860	.	2240	.
19	MEDWAY	50701	0095X	I-95 (NB) @ SR 116 UNDERPASS	A		3250	3290	3310	3250	3190
19	MEDWAY	50703	0095X	I-95 (NB) N/O OFF RAMP TO SR 157	I	ATR50701	.	2150	.	1910	.
19	MEDWAY	50705	0095X	I-95 (NB) N/O ON RAMP FROM SR 157	I	ATR50701	.	2730	.	2260	.
19	MEDWAY	38204	0116X	SR 116 SE/O SR 11/157	C	I	.	.	2780	.	.
19	MEDWAY	38301	0116X	SR 116 N/O IR 828 (POWERVILLE) @BR# 3009	C	I	.	.	2430	.	.
19	MEDWAY	38304	0116X	SR 116 SE/O IR 828 (POWERVILLE RD)	C	I	.	.	1930	.	.
19	MEDWAY	38900	0116X	SR 116 @ WOODVILLE TL	C	I	700	.	640	.	.
19	MEDWAY	54504	0116X	SR 116 SE/O IR 649 (TURNPIKE RD)	C	I	.	.	1160	.	.
19	MEDWAY	38603	0157X	SR 157 E/O SR 11	C	I	.	.	6420	.	.
19	MEDWAY	38804	0157X	SR 157 SE/O IR 1903 (MAIN RD) (E JCT)	C	I	.	.	1710	.	.
19	MEDWAY	38808	0157X	SR 157 NW/O IR 1903 (MAIN RD)	C	I	.	.	1800	.	.
19	MEDWAY	39100	0157X	SR 157 @ MOLUNKUS TL	C	I	.	.	1300	.	.
19	MEDWAY	38604	01903	IR 1903 (MAIN RD) SE/O SR 11/157	C	I	.	.	420	.	.
19	MEDWAY	38807	01903	IR 1903 (MAIN RD) W/O SR 157	C	I	.	.	120	.	.
19	MILFORD	46701	0002X	US 2 N/O IR 574 (GREENFIELD RD) @BR#2179	C	I	.	2870	.	.	.

2006 Maine Transportation Count Book

Penobscot

	TOWN	STATION	ROAD	LOCATION	TYPE	GROUP	AADT02	AADT03	AADT04	AADT05	AADT06
19	MILFORD	46705	0002X	US 2 S/O IR 574 (GREENFIELD RD)	C	I	.	5010	.	.	.
19	MILFORD	64301	0002X	US 2 N/O IR 600 (COUNTY RD)	C	I	.	9220	9470	9800	8890
19	MILFORD	64306	0002X	US 2 SW/O SR 178 @ OLD TOWN TL	B	I	.	15810	.	.	.
19	MILFORD	64400	0002X	US 2 @ SUNKHAZE STREAM @BR# 3535	C	I	.	5090	.	.	.
19	MILFORD	46703	00574	IR 574 (GREENFIELD) E/O US 2 @ RR XING	C	I	.	2700	.	.	.
19	MILFORD	47400	00600	IR 600 (COUNTY RD) @ BR# 2036	C	II	.	180	.	.	.
19	MILFORD	64303	00600	IR 600 (COUNTY RD) E/O US 2 @ RR XING	C	II	.	3800	.	.	.
19	MILFORD	79303	00600	IR 600 (COUNTY) E/O IR 2818 @BR# 2282	C	II	.	1620	.	.	.
19	MILFORD	64305	0178X	SR 178 S/O US 2 @ RR XING	C	I	.	6800	6740	6710	6390
19	MILLINOCKET	02003	0011C	SR 11C (POPLAR ST) E/O KATAHDIN AVE	C	I	.	.	1570	.	.
19	MILLINOCKET	02805	0011C	SR 11C (PENOBSCOT AVE) S/O PINE ST	C	I	.	.	2590	.	.
19	MILLINOCKET	03705	0011C	SR 11C(PENOBSCOT)(OW) S/O SR 11(CENTRAL)	C	I	.	.	3410	.	.
19	MILLINOCKET	00103	0011X	SR 11/157 (CENTRAL ST) E/O WATER ST @ BR	C	I	.	.	11240	.	.
19	MILLINOCKET	00107	0011X	SR 11/157 (CENTRAL ST) W/O WATER ST	C	I	.	.	11260	.	.
19	MILLINOCKET	02006	0011X	SR 11 (POPLAR ST) SW/O KATAHDIN AVE	C	I+II	.	.	4220	.	.
19	MILLINOCKET	02008	0011X	SR 11 (KATAHDIN AVE) NW/O POPLAR ST	C	I	.	.	4900	.	.
19	MILLINOCKET	02402	0011X	SR 11 (POPLAR ST) NE/O SOMERSET ST	C	I+II	.	.	4040	.	.
19	MILLINOCKET	02404	0011X	SOMERSET ST SE/O SR 11 (POLAR ST)	C	I	.	.	340	.	.
19	MILLINOCKET	02503	0011X	SR 11 (POPLAR ST) E/O GOLDEN RD	C	II	.	.	2670	.	.
19	MILLINOCKET	02507	0011X	SR 11 (POPLAR ST) W/O GOLDEN RD	C	II+III	.	.	1380	.	.
19	MILLINOCKET	03507	0011X	SR 11/157 (CENTRAL ST) W/O CONGRESS ST	C	I	.	.	10670	.	.
19	MILLINOCKET	03703	0011X	SR 11/157 (CENTRAL ST) E/O PENOBSCOT AVE	C	I	.	.	10160	.	.
19	MILLINOCKET	03707	0011X	SR 11/157 (CENTRAL ST) W/O PENOBSCOT AVE	C	I	.	.	7220	.	.
19	MILLINOCKET	04004	0011X	SR 11/157 (CENTRAL ST) SE/O KATAHDIN AVE	C	I	.	.	6020	.	.
19	MILLINOCKET	04005	0011X	SR 11 (KATAHDIN AVE) S/O CENTRAL ST	C	I	.	.	5030	.	.
19	MILLINOCKET	05703	0011X	SR 11/157 (CENTRAL ST) E/O FOREST AVE	C	I	.	.	10510	.	.
19	MILLINOCKET	05903	0011X	SR 11/157 (CENTRAL ST) E/O MEDWAY RD	C	I	.	.	10420	.	.
19	MILLINOCKET	06207	0011X	SR 11/157 (CENTRAL ST) W/O MASS AVE	C	I	.	.	6770	.	.
19	MILLINOCKET	08307	0011X	SR 11/157 (CENTRAL ST) W/O RHODE ISLAND	C	I	.	.	8920	.	.
19	MILLINOCKET	10303	0011X	SR 11/157 E/O CEDAR ST	C	I	.	.	7000	.	.
19	MILLINOCKET	35300	0011X	SR 11 @ T3 INDIAN PURCHASE TL	C	II+III	.	.	1400	.	.
19	MILLINOCKET	37903	0011X	SR 11/157 E/O IR 4025 (RICE FARM RD)	C	I	.	.	5530	.	.
19	MILLINOCKET	37906	0011X	SR 11/157 SW/O IR 4025 (RICE FARM RD)	C	I	.	.	5280	.	.
19	MILLINOCKET	08206	01677	MILLINOCKET STREAM RD SW/O MEDWAY RD	C	I	.	.	60	.	.

County **2006 Maine Transportation Count Book**

Penobscot		STATION	ROAD	LOCATION	TYPE	GROUP	AADT02	AADT03	AADT04	AADT05	AADT06
TOWN											
19	MILLINOCKET	37905	04025	IR 4025 (RICE FARM RD) S/O SR 11/157	C	I	.	.	360	.	.
19	MILLINOCKET	08601	30001	AROOSTOOK AVE #1 N/O SECOND ST	C	I	.	.	600	.	.
19	MILLINOCKET	08605	30001	AROOSTOOK AVE #1 S/O SECOND ST	C	I	.	.	400	.	.
19	MILLINOCKET	00808	30002	AROOSTOOK AVE #2 NW/O CHERRY ST	C	I	.	.	490	.	.
19	MILLINOCKET	03105	30002	AROOSTOOK AVE #2 S/O SUMMER ST	C	I	.	.	3090	.	.
19	MILLINOCKET	03601	30002	AROOSTOOK AVE #2 N/O PINE ST	C	I	.	.	1620	.	.
19	MILLINOCKET	03605	30002	AROOSTOOK AVE #2 S/O PINE ST	C	I	.	.	1200	.	.
19	MILLINOCKET	04707	30005	BATES ST (OW) W/O HIGHLAND AVE	C	I	.	.	60	.	.
19	MILLINOCKET	04807	30005	BATES ST W/O KATAHDIN AVE	C	I	.	.	4010	.	.
19	MILLINOCKET	04908	30005	BATES ST NW/O BOWDOIN ST	C	II	.	.	3830	.	.
19	MILLINOCKET	05601	30005	BATES ST N/O STACYVILLE RD (PW)	C	III	.	.	1420	.	.
19	MILLINOCKET	01603	30007	BIRCH ST E/O PENOBSCOT AVE	C	I	.	.	780	.	.
19	MILLINOCKET	04902	30008	BOWDOIN ST NE/O BATES ST	C	I	.	.	580	.	.
19	MILLINOCKET	08806	30008	BOWDOIN ST SW/O PENOBSCOT AVE	C	I	.	.	560	.	.
19	MILLINOCKET	10102	30008	BOWDOIN ST NE/O MAINE AVE	C	I	.	.	580	.	.
19	MILLINOCKET	10204	30009	BAIGALLI LN SE/O HEMLOCK ST	C	I	.	.	20	.	.
19	MILLINOCKET	00902	30010	CHERRY ST NE/O KATAHDIN AVE	C	I	.	.	2210	.	.
19	MILLINOCKET	00708	30013	CONGRESS ST NW/O GRANITE ST	C	I	.	.	450	.	.
19	MILLINOCKET	03501	30013	CONGRESS ST N/O SR 11/157 (CENTRAL ST)	C	I	.	.	570	.	.
19	MILLINOCKET	03505	30013	CONGRESS ST S/O SR 11/157 (CENTRAL ST)	C	I	.	.	730	.	.
19	MILLINOCKET	08705	30013	CONGRESS ST S/O PINE ST	C	I	.	.	560	.	.
19	MILLINOCKET	07608	30014	CONNECTICUT AVE NW/O NEW HAMPSHIRE ST	C	I	.	.	400	.	.
19	MILLINOCKET	07908	30014	CONNECTICUT AVE NW/O NEW JERSEY ST	C	I	.	.	180	.	.
19	MILLINOCKET	08004	30014	CONNECTICUT AVE SE/O NEW YORK ST	C	I	.	.	200	.	.
19	MILLINOCKET	08008	30014	CONNECTICUT AVE NW/O NEW YORK ST	C	I	.	.	190	.	.
19	MILLINOCKET	05005	30015	COTTAGE RD S/O VERMONT ST	C	I	.	.	750	.	.
19	MILLINOCKET	05007	30015	COTTAGE RD W/O VERMONT ST	C	I	.	.	220	.	.
19	MILLINOCKET	06505	30015	COTTAGE RD S/O PLEASANT ST	C	I	.	.	870	.	.
19	MILLINOCKET	07305	30015	COTTAGE RD S/O NEW YORK ST	C	I	.	.	1310	.	.
19	MILLINOCKET	05805	30019	EASTLAND AVE S/O SR 11/157 (CENTRAL ST)	C	I	.	.	730	.	.
19	MILLINOCKET	00206	30021	ELM ST SW/O KATAHDIN AVE	C	I	.	.	1290	.	.
19	MILLINOCKET	06603	30022	FIELD ST E/O ORCHARD ST	C	I	.	.	1190	.	.
19	MILLINOCKET	05701	30023	FOREST AVE N/O SR 11/157 (CENTRAL ST)	C	I	.	.	970	.	.
19	MILLINOCKET	06907	30023	FOREST AVE W/O COTTAGE RD	C	I	.	.	610	.	.

2006 Maine Transportation Count Book

Penobscot

	TOWN	STATION	ROAD	LOCATION	TYPE	GROUP	AADT02	AADT03	AADT04	AADT05	AADT06
19	MILLINOCKET	00506	30026	GRANITE ST SW/O MEDWAY RD	C	I	.	.	2350	.	.
19	MILLINOCKET	00702	30026	GRANITE ST NE/O CONGRESS	C	I	.	.	2580	.	.
19	MILLINOCKET	09602	30026	GRANITE ST NE/O PROSPECT ST	C	I	.	.	2600	.	.
19	MILLINOCKET	10202	30028	HEMLOCK ST NE/O BAIGALLI LN	C	I	.	.	120	.	.
19	MILLINOCKET	03801	30029	HIGHLAND AVE N/O SR 11/157 (CENTRAL)	C	I	.	.	540	.	.
19	MILLINOCKET	04701	30029	HIGHLAND AVE N/O BATES ST	C	I	.	.	340	.	.
19	MILLINOCKET	04001	30033	KATAHDIN AVE N/O SR 11 (CENTRAL ST)	C	I	.	.	4930	.	.
19	MILLINOCKET	04805	30033	KATADHIN AVE S/O BATES ST	C	I	.	.	4850	.	.
19	MILLINOCKET	05108	30033	KATAHDIN ST NW/O BOWDOIN ST	C	I	.	.	530	.	.
19	MILLINOCKET	03901	30036	MAINE AVE N/O SR 11/157 (CENTRAL ST)	C	I	.	.	510	.	.
19	MILLINOCKET	10104	30036	MAINE AVE SE/O BOWDOIN ST	C	I	.	.	180	.	.
19	MILLINOCKET	04204	30038	MASSACHUSETTS AVE SE/O NEW HAMPSHIRE ST	C	I	.	.	390	.	.
19	MILLINOCKET	06201	30038	MASS AVE N/O SR 11/157	C	I	.	.	1180	.	.
19	MILLINOCKET	08104	30038	MASSACHUSETTS AVE SE/O MICHIGAN ST	C	I	.	.	700	.	.
19	MILLINOCKET	08108	30038	MASSACHUSETTS AVE NW/O MICHIGAN ST	C	I	.	.	440	.	.
19	MILLINOCKET	08404	30038	MASSACHUSETTS AVE SE/O NEW JERSEY AVE	C	I	.	.	860	.	.
19	MILLINOCKET	08408	30038	MASSACHUSETTS AVE NW/O NEW JERSEY ST	C	I	.	.	920	.	.
19	MILLINOCKET	00504	30039	MEDWAY RD SE/O GRANITE ST	C	I	.	.	1900	.	.
19	MILLINOCKET	00508	30039	MEDWAY RD NW/O GRANITE ST	C	I	.	.	2880	.	.
19	MILLINOCKET	05904	30039	MEDWAY RD SE/O SR 11/157 (CENTRAL ST)	C	I	.	.	1830	.	.
19	MILLINOCKET	08208	30039	MEDWAY RD NW/O MILLINOCKET STR RD	C	I	.	.	1170	.	.
19	MILLINOCKET	01402	30040	MICHIGAN ST NE/O RHODE ISLAND AVE	C	I	.	.	250	.	.
19	MILLINOCKET	01406	30040	MICHIGAN ST SW/O RHODE ISLAND AVE	C	I	.	.	190	.	.
19	MILLINOCKET	08102	30040	GRAND AVE NE/O MASSACHUSETTS AVE	C	I	.	.	180	.	.
19	MILLINOCKET	08106	30040	MICHIGAN ST SW/O MASSACHUSETTS AVE	C	I	.	.	170	.	.
19	MILLINOCKET	04206	30042	NEW HAMPSHIRE ST SW/O MASSACHUSETTS AVE	C	I	.	.	190	.	.
19	MILLINOCKET	07606	30042	NEW HAMPSHIRE ST SW/O CONNECTICUT AVE	C	I	.	.	160	.	.
19	MILLINOCKET	07802	30043	NEW JERSEY ST NE/O RHODE ISLAND AVE	C	I	.	.	490	.	.
19	MILLINOCKET	07806	30043	NEW JERSEY ST SW/O RHODE ISLAND AVE	C	I	.	.	340	.	.
19	MILLINOCKET	08406	30043	NEW JERSEY ST SW/O MASSACHUSETTS AVE	C	I	.	.	330	.	.
19	MILLINOCKET	07302	30044	NEW YORK ST NE/O COTTAGE RD	C	I	.	.	490	.	.
19	MILLINOCKET	08002	30044	NEW YORK ST NE/O CONNECTICUT AVE	C	I	.	.	280	.	.
19	MILLINOCKET	08006	30044	NEW YORK ST SW/O CONNECTICUT AVE	C	I	.	.	350	.	.
19	MILLINOCKET	08204	30045	RICE FARM RD SE/O MILLINOCKET STREAM RD	C	I	.	.	1080	.	.

2006 Maine Transportation Count Book

Penobscot

	TOWN	STATION	ROAD	LOCATION	TYPE	GROUP	AADT02	AADT03	AADT04	AADT05	AADT06
19	MILLINOCKET	07702	30047	OHIO ST NE/O RHODE ISLAND AVE	C	I	.	.	180	.	.
19	MILLINOCKET	07706	30047	OHIO ST SW/O RHODE ISLAND AVE	C	I	.	.	170	.	.
19	MILLINOCKET	06601	30048	ORCHARD ST N/O FIELD ST	C	I	.	.	600	.	.
19	MILLINOCKET	03701	30050	PENOBSCOT AVE N/O SR 11/157 (CENTRAL ST)	C	I	.	.	1680	.	.
19	MILLINOCKET	04301	30050	PENOBSCOT AVE N/O SPRING ST	C	I	.	.	1390	.	.
19	MILLINOCKET	05405	30050	PENOBSCOT AVE S/O KATAHDIN AVE EXT @ BR	C	I	.	.	790	.	.
19	MILLINOCKET	02807	30051	PINE ST W/O SR 11C (PENOBSCOT AVE)	C	I	.	.	840	.	.
19	MILLINOCKET	03607	30051	PINE ST W/O AROOSTOOK AVE #2	C	I	.	.	750	.	.
19	MILLINOCKET	08707	30051	PINE ST W/O CONGRESS ST	C	I	.	.	190	.	.
19	MILLINOCKET	09604	30054	PROSPECT ST SE/O GRANITE ST	C	I	.	.	570	.	.
19	MILLINOCKET	01404	30055	RHODE ISLAND AVE SE/O MICHIGAN ST	C	I	.	.	230	.	.
19	MILLINOCKET	07504	30055	RHODE ISLAND AVE SE/O COTTAGE RD	C	I	.	.	140	.	.
19	MILLINOCKET	07704	30055	RHODE ISLAND AVE SE/O OHIO ST	C	I	.	.	650	.	.
19	MILLINOCKET	07708	30055	RHODE ISLAND AVE NW/O OHIO ST	C	I	.	.	470	.	.
19	MILLINOCKET	08301	30055	RHODE ISLAND AVE N/O SR 11/157 (CENTRAL)	C	I	.	.	2540	.	.
19	MILLINOCKET	04007	30057	SCHOOL ST W/O KATAHDIN AVE	C	I	.	.	110	.	.
19	MILLINOCKET	08603	30058	SECOND ST E/O AROOSTOOK AVE #1 @ BR	C	I	.	.	400	.	.
19	MILLINOCKET	08607	30058	SECOND ST W/O AROOSTOOK AVE #1	C	I	.	.	240	.	.
19	MILLINOCKET	02408	30060	SOMERSET ST NW/O SR 11 (POLAR ST)	C	I	.	.	280	.	.
19	MILLINOCKET	04303	30062	SPRING ST E/O PENOBSCOT AVE	C	I	.	.	380	.	.
19	MILLINOCKET	04503	30062	SPRING ST E/O STATE ST	C	I	.	.	210	.	.
19	MILLINOCKET	00303	30063	SPRUCE ST E/O SR 11 (KATAHDIN AVE)	C	I	.	.	1170	.	.
19	MILLINOCKET	00306	30063	SPRUCE ST SW/O SR 11 (KATAHDIN AVE)	C	I	.	.	1260	.	.
19	MILLINOCKET	03401	30064	STATE ST N/O SR 11/157 (CENTRAL ST)	C	I	.	.	840	.	.
19	MILLINOCKET	03405	30064	STATE ST S/O SR 11/157 (CENTRAL ST)	C	I	.	.	160	.	.
19	MILLINOCKET	04501	30064	STATE ST N/O SPRING ST	C	I	.	.	730	.	.
19	MILLINOCKET	03003	30065	SUMMER ST E/O SR 11C (PENOBSCOT AVE)	C	I	.	.	690	.	.
19	MILLINOCKET	10007	30065	SUMMER ST W/O CONGRESS ST	C	I	.	.	300	.	.
19	MILLINOCKET	05402	30069	KATAHDIN AVE EXT NE/O PENOBSCOT AVE	C	I	.	.	830	.	.
19	MILLINOCKET	05407	30069	KATAHDIN AVE EXT W/O PENOBSCOT AVE	C	I	.	.	420	.	.
19	MILLINOCKET	09405	30071	MILLINOCKET STREAM RD S/O YORK ST	C	I	.	.	140	.	.
19	MILLINOCKET	05002	30078	VERMONT ST NE/O COTTAGE RD	C	I	.	.	560	.	.
19	MILLINOCKET	09103	30081	WASSAU ST E/O MEDWAY RD	C	I	.	.	2250	.	.
19	MILLINOCKET	00101	30082	WATER ST N/O SR 11/157 (CENTRAL ST)	C	I	.	.	250	.	.

2006 Maine Transportation Count Book

Penobscot

	TOWN	STATION	ROAD	LOCATION	TYPE	GROUP	AADT02	AADT03	AADT04	AADT05	AADT06
19	MILLINOCKET	00604	30085	YORK ST SE/O GRANITE ST	C	I	.	.	470	.	.
19	MILLINOCKET	09404	30085	YORK ST SE/O MILLINOCKET STREAM RD	C	I	.	.	240	.	.
19	MILLINOCKET	00204	30110	KATAHDIN AVE SE/O ELM ST	C	I	.	.	2540	.	.
19	MILLINOCKET	01601	30110	PENOBSCOT AVE N/O BIRCH ST	C	I	.	.	1520	.	.
19	MILLINOCKET	02004	30110	KATAHDIN AVE SE/O POPLAR ST	C	I	.	.	2200	.	.
19	MILLINOCKET	00201	30111	PENOBSCOT AVE N/O ELM ST	C	I	.	.	1340	.	.
19	MILLINOCKET	06105	32559	SYCAMORE ST S/O BALSAM DR	C	I	.	.	3340	.	.
19	MILLINOCKET	09205	32560	CEDAR ST S/O BALSAM DR	C	I	.	.	800	.	.
19	MILLINOCKET	06103	32561	BALSAM DR E/O SYCAMORE ST	C	I	.	.	440	.	.
19	MILLINOCKET	08805	50050	PENOBSCOT AVE S/O BOWDOIN ST	C	I	.	.	1330	.	.
19	MT CHASE	36001	0011X	SR 11 N/O IR 794 (OWLSBORO RD)	C	II	.	.	1040	.	.
19	MT CHASE	36005	0011X	SR 11 S/O IR 794 (OWLSBORO RD)	C	II	.	.	1020	.	.
19	MT CHASE	36007	00794	IR 794 (OWLSBORO RD) W/O SR 11	C	II	.	.	220	.	.
19	MT CHASE	36106	00872	IR 872 (WAPITI RD) SW/O SR 159	C	III	.	.	160	.	.
19	MT CHASE	35808	0159X	SR 159 NW/O IR 794 (OWLSBORO RD)	C	II+III	.	.	530	.	.
19	MT CHASE	36104	0159X	SR 159 SE/O IR 872 (WAPITI RD)	C	II+III	.	.	520	.	.
19	MT CHASE	36107	0159X	SR 159 W/O IR 872 (WAPITI RD)	C	II+III	.	.	300	.	.
19	NEWBURGH	31502	0009X	SR 9/US 202 NE/O SR 69	T	I+II	.	2120	2170	1950	2100
19	NEWBURGH	31506	0009X	SR 9/US 202 SW/O SR 69	T	II	.	3960	.	3760	4220
19	NEWBURGH	77506	0009X	SR 9/US 202 SW/O IR 539 (LINDSEY RD)	C	II	.	2990	.	.	3080
19	NEWBURGH	66602	00444	IR 444(KENNEBEC RD) NE/O IR 536(MUDGETT)	C	I	.	620	.	.	580
19	NEWBURGH	66606	00444	IR 444(KENNEBEC RD) SW/O IR 536(MUDGETT)	C	I	.	610	.	.	500
19	NEWBURGH	66805	00530	IR 530 (CHAPMAN RD) S/O SR 9/US 202	C	I	.	820	.	.	710
19	NEWBURGH	77501	00539	IR 539 (LINDSEY RD) N/O SR 9/US 202	C	I	.	190	.	.	180
19	NEWBURGH	31504	0069X	SR 69 SE/O SR 9/US 202	T	I	.	1980	.	1980	1780
19	NEWBURGH	31508	0069X	SR 69 NW/O SR 9/US 202	T	I	.	4630	.	4540	4170
19	NEWBURGH	52002	0095S	I-95 (SB) N/O ON RAMP FROM SR 69	I	ATR52104	.	9600	.	9510	.
19	NEWBURGH	52004	0095S	I-95 (SB) N/O OFF RAMP TO SR 69	I	ATR52104	.	11460	.	11220	.
19	NEWBURGH	52001	0095X	I-95 (NB) N/O OFF RAMP TO SR 69	I	ATR52103	.	9540	.	9470	.
19	NEWBURGH	52003	0095X	I-95 (NB) N/O ON RAMP FROM SR 69	I	ATR52103	.	11670	.	11130	.
19	NEWBURGH	67006	02017	IR 2017 (NORTH RD) SW/O SR 69	C	I	.	990	.	.	860
19	NEWBURGH	77607	02017	IR2017(NORTH) W/O IR539(LINDSEY)@BR#5897	C	I	.	390	.	.	370
19	NEWPORT	00103	0002X	US 2/SR7/100(MAIN) E/O PROGRESS PARK AVE	C	I	.	9480	.	.	.
19	NEWPORT	00303	0002X	US 2/SR 7/100 (MAIN ST) E/O SPRING ST	C	I	.	9250	.	.	.

County **2006 Maine Transportation Count Book**

Penobscot		STATION	ROAD	LOCATION	TYPE	GROUP	AADT02	AADT03	AADT04	AADT05	AADT06
TOWN											
19	NEWPORT	00307	0002X	US 2/SR 7/100 (MAIN ST) W/O HIGH ST	C	I	.	8800	.	.	9400
19	NEWPORT	00800	0002X	US 2 @ PALMYRA TL	C	II	.	11780	.	.	13130
19	NEWPORT	02103	0002X	US 2/SR 7/100 (MAIN ST) E/O WATER ST @BR	C	I	.	8270	.	.	8000
19	NEWPORT	02704	0002X	US 2/SR 7(ELM) SE/O US 2/SR 7(MAIN) @RR	C	I	.	7210	.	.	7680
19	NEWPORT	03307	0002X	US 2/SR 7/100 W/O RIDGE RD	C	II	.	5610	.	.	6270
19	NEWPORT	32803	0002X	US 2/SR 100 E/O SR 7	C	II	.	1970	.	.	1790
19	NEWPORT	32808	0002X	US 2/SR 7/100 NW/O SR 7	C	II	.	2660	.	.	2940
19	NEWPORT	33007	0002X	US 2/SR 7/100 W/O IR 1276 (OLD BANGOR)	C	II	.	3880	.	.	4270
19	NEWPORT	81000	0007X	SR 7/11 0.1 MI S/O CORINNA TL	A	ATR81000	6970	7300	7290	7130	.
19	NEWPORT	00702	0007X	SR 7/11 NE/O US 2/SR 7/100 (MAIN)	C	I	.	12620	.	.	12340
19	NEWPORT	01601	0007X	SR 7/11 N/O LIBBY HILL RD @ CUL @RR XING	C	I	.	11760	.	.	11890
19	NEWPORT	32806	0007X	SR 7 SW/O US 2/SR 100	C	I	.	1360	.	.	1120
19	NEWPORT	33201	0007X	SR 7/11 N/O IR 1561 (WILLIAMS RD)	C	I	.	8600	.	.	.
19	NEWPORT	33205	0007X	SR 7/11 S/O IR 2373 (OLD CORINNA RD)	C	I	.	11050	.	.	.
19	NEWPORT	01000	0011X	SR 11/100 @ PALMYRA TL (NEAR MOBIL STA)	C	I	.	18230	.	.	19700
19	NEWPORT	75506	00364	IR 364 (COUNTY WOODS RD) SW/O SR 222	C	I	.	1040	.	.	950
19	NEWPORT	77103	00364	IR 364 (COUNTY WOODS RD) E/O SR 7/11	C	I	.	1230	.	.	1150
19	NEWPORT	32702	00412	IR 412 (STETSON RD) NE/O IR 1276	C	I	670
19	NEWPORT	75505	00443	IR 443 (DURHAM BRIDGE RD) S/O SR 222	C	I	530
19	NEWPORT	90805	00443	IR 443 (DURHAM BR) S/O IR 397 @ BR# 3170	C	I	590
19	NEWPORT	03202	00453	RIDGE RD NE/O I-95 OFF RAMP	C	I	.	2050	.	.	2210
19	NEWPORT	01708	01135	LIBBY HILL RD NW/O SR 7/11 (HIGH ST)	C	I	.	810	.	.	670
19	NEWPORT	00305	01241	SPRING ST S/O US 2/SR 7/100 (MAIN ST)	C	I	.	680	.	.	630
19	NEWPORT	02402	01243	GROVE ST NE/O ELM ST	C	I	.	960	.	.	970
19	NEWPORT	02603	01247	PARK AVE E/O ELM ST	C	I	.	580	.	.	540
19	NEWPORT	33208	01561	IR 1561 (WILLIAMS RD) NW/O SR 7/11	C	I	.	2310	.	.	2560
19	NEWPORT	02101	01829	WATER ST N/O US 2/SR 7/100 (MAIN ST)	C	I	.	860	.	.	600
19	NEWPORT	02306	01830	CENTER ST SW/O ELM ST @SEBASTICOOK RV BR	C	I	.	240	.	.	170
19	NEWPORT	02404	01835	ELM ST SE/O GROVE ST	C	I	1970
19	NEWPORT	00301	01923	HIGH ST N/O US 2/SR 7/100 (MAIN ST)	C	I	.	1670	.	.	1820
19	NEWPORT	03604	01923	HIGH ST SE/O SR 7/11	C	I	.	3350	.	.	3160
19	NEWPORT	75503	0222X	SR 222 E/O IR 443 (DURHAM BRIDGE RD)	C	I	.	1370	.	.	1190
19	NEWPORT	75507	0222X	SR 222 W/O IR 443 (DURHAM BRIDGE RD)	C	I	.	1620	.	.	1580
19	OLD TOWN	00307	0002A	US 2A (CENTER ST) W/O SR 43 (N MAIN ST)	C	I	13010	13300	.	.	12860

2006 Maine Transportation Count Book

Penobscot

	TOWN	STATION	ROAD	LOCATION	TYPE	GROUP	AADT02	AADT03	AADT04	AADT05	AADT06
19	OLD TOWN	00407	0002A	US 2A (CENTER ST) W/O N BRUNSWICK ST	C	I	.	12880	.	.	12170
19	OLD TOWN	00603	0002A	US 2A (CENTER ST) E/O STILLWATER AVE	C	I	.	14750	.	.	13430
19	OLD TOWN	00606	0002A	US 2A (STILLWATER) SW/O US 2A (CENTER)	C	I	.	18940	.	.	17040
19	OLD TOWN	00705	0002A	US 2A (COLLEGE) S/O UNIV PARK @ ORONO TL	C	I	11680	10990	.	.	10600
19	OLD TOWN	06302	0002A	US 2A (STILLWATER AVE) NE/O PEMBROKE DR	C	I	.	18700	.	.	17200
19	OLD TOWN	07101	0002A	US 2A (STILLWATER AVE) N/O COLLEGE AVE	C	I	.	19120	.	.	.
19	OLD TOWN	01803	0002D	CHESTER ST E/O US 2 (S MAIN ST)	C	I	.	3580	.	.	3620
19	OLD TOWN	00102	0002X	US 2 (CENTER ST) NE/O WATER ST	C	I	.	17410	15650	.	16270
19	OLD TOWN	00305	0002X	US 2 (S MAIN ST) S/O US 2A (CENTER ST)	C	I	6200
19	OLD TOWN	01805	0002X	US 2 (S MAIN ST) S/O WILLOW ST	C	I	.	9000	.	.	8430
19	OLD TOWN	02305	0002X	US 2 (S MAIN ST) S/O CONGRESS ST	C	I	.	9120	.	.	.
19	OLD TOWN	03900	0002X	US 2 (S MAIN ST) @ ORONO TL	C	I	7990	7190	.	.	6780
19	OLD TOWN	04105	0002X	US 2 (S MAIN ST) S/O BOWDOIN AVE	C	I	.	9050	.	.	7710
19	OLD TOWN	00501	0016X	SR 16 (BENNOCH RD) N/O SR 116	C	I	.	1590	1470	1690	1510
19	OLD TOWN	06404	0016X	SR 16 (BENNOCH RD) SE/O STILLWATER AVE	C	I	.	1880	.	.	1490
19	OLD TOWN	06408	0016X	SR 16 (BENNOCH RD) NW/O STILLWATER AVE	C	I	.	.	3650	.	3930
19	OLD TOWN	08500	0016X	SR 16(BENNOCHRD) N/O SULLIVAN DR	C	I	.	1380	.	.	.
19	OLD TOWN	08602	0016X	SR 16 (BENNOCH) NE/O SR 43(GILMAN FALLS)	C	I	.	2790	.	.	2410
19	OLD TOWN	08606	0016X	SR 16 (BENNOCH) SW/O SR 43(GILMAN FALLS)	C	I	.	1400	.	.	1530
19	OLD TOWN	00208	0043X	SR 43 NW/O I-95 (SB) OFF RAMP	C	I	.	2470	.	.	1900
19	OLD TOWN	00301	0043X	SR 43 (N MAIN ST) N/O US 2A (CENTER ST)	C	I	6730
19	OLD TOWN	01204	0043X	SR 43 (N MAIN ST) SE/O N BRUNSWICK ST	C	I	.	5410	.	.	5020
19	OLD TOWN	04707	0043X	SR 43(GILMAN FLS) 0.5 MI W/O LEONARD LN	C	I	.	5190	.	.	4840
19	OLD TOWN	08203	0043X	SR 43 (GILMAN FALLS AVE) E/O SUNSET DR	C	I	.	5910	.	.	5510
19	OLD TOWN	08404	0043X	SR 43 (N MAIN ST) SE/O STILLWATER AVE	C	I	.	8010	.	.	6680
19	OLD TOWN	08408	0043X	SR 43 (N MAIN ST) NW/O STILLWATER AVE	C	I	.	5590	.	.	5200
19	OLD TOWN	08604	0043X	SR 43 (GILMAN FALLS) SE/O SR 16(BENNOCH)	C	I	.	5030	.	.	4480
19	OLD TOWN	08608	0043X	SR 43 (GILMAN FALLS) NW/O SR 16(BENNOCH)	C	I	.	3710	3580	3850	.
19	OLD TOWN	08704	0043X	SR 43 (GILMAN FALLS) SE/O COLLEGE RD	C	I	.	4820	.	.	4460
19	OLD TOWN	46902	0043X	SR 43 NE/O IR 1047 (KIRKLAND RD)	C	I	.	1750	.	.	1480
19	OLD TOWN	46907	0043X	SR 43 W/O IR 1047 (KIRKLAND RD)	M	I	.	.	.	1640	.
19	OLD TOWN	47106	00594	IR 594 (POPLAR) SW/O IR 1047 (KIRKLAND)	C	I	.	1090	.	.	980
19	OLD TOWN	51002	0095S	I-95 (SB) N/O ON RAMP FROM SR 16	A		4410	4490	4530	4440	4520
19	OLD TOWN	51102	0095S	I-95 (SB) N/O ON RAMP FROM SR 43	I	ATR51005	.	5100	.	4820	.

2006 Maine Transportation Count Book

Penobscot

	TOWN	STATION	ROAD	LOCATION	TYPE	GROUP	AADT02	AADT03	AADT04	AADT05	AADT06
19	OLD TOWN	51104	0095S	I-95 (SB) N/O OFF RAMP TO SR 43	I	ATR51005	.	5560	.	5350	.
19	OLD TOWN	51001	0095X	I-95 (NB) N/O OFF RAMP TO SR 16	I	ATR51001	4390	4480	.	4410	.
19	OLD TOWN	51101	0095X	I-95 (NB) N/O OFF RAMP TO SR 43	I	ATR51001	.	5240	.	5280	.
19	OLD TOWN	51103	0095X	I-95 (NB) N/O ON RAMP FROM SR 43	I	ATR51001	.	5650	.	5590	.
19	OLD TOWN	06801	01132	AIRPORT RD N/O SR 43 (GILMAN FALLS)	C	I	.	410	.	.	440
19	OLD TOWN	00503	0116X	SR 116 E/O SR 16 (BENNOCH RD)	C	I	.	670	580	590	590
19	OLD TOWN	00405	40006	S BRUNSWICK ST S/O US 2A (CENTER ST)	C	I	.	2360	.	.	1900
19	OLD TOWN	02303	40014	CONGRESS ST E/O US 2 (S MAIN ST)	C	I	.	390	.	.	310
19	OLD TOWN	02307	40064	PRENTISS ST W/O US 2 (S MAIN ST)	C	I	.	540	.	.	380
19	OLD TOWN	00602	40078	STILLWATER AVE NE/O US 2A (CENTER ST)	C	I	4520
19	OLD TOWN	01502	40078	STILLWATER AVE NE/O N BRUNSWICK ST	C	I	.	2640	.	.	2120
19	OLD TOWN	01506	40078	STILLWATER AVE SW/O N BRUNSWICK ST	C	I	.	3560	.	.	2900
19	OLD TOWN	01602	40078	STILLWATER AVE NE/O FREE ST @ BR	C	I	.	20070	19360	.	18840
19	OLD TOWN	07600	40078	STILLWATER AVE @ ORONO TL	C	I	.	20230	.	.	19030
19	OLD TOWN	08205	40080	SUNSET DR S/O SR 43 (GILMAN FALLS AVE)	C	I	.	180	.	.	160
19	OLD TOWN	00101	40089	N WATER ST(OW) N/O US 2 (CENTER ST)	C	I	.	1380	.	.	1490
19	OLD TOWN	00105	40089	WATER ST S/O US 2 (CENTER ST)	C	I	.	3700	.	.	3340
19	OLD TOWN	00401	40097	N BRUNSWICK ST N/O US 2A (CENTER ST)	C	I	.	1290	.	.	1080
19	OLD TOWN	08807	40100	KIRKLAND RD W/O SR 16 (BENNOCH RD)	C	I	.	1940	.	.	1740
19	OLD TOWN	01101	80125	CENTER ST N/O SR 43 (N BRUNSWICK ST) @BR	C	I	.	2150	.	.	1940
19	ORONO	00305	0002A	US 2A (COLLEGE AVE) S/O SEBEC RD	M	I	6530
19	ORONO	00408	0002A	US 2A (COLLEGE AVE) NW/O US 2 (PARK ST)	M	I	7270
19	ORONO	00701	0002A	US 2A (COLLEGE AVE) N/O LONG RD	M	I	11730
19	ORONO	00705	0002A	US 2A (COLLEGE AVE) S/O LONG RD	M	I	11750
19	ORONO	04208	0002A	US 2A(COLLEGE AVE) NW/O UNIVERSITY PLACE	C	I	.	7160	.	.	6420
19	ORONO	00102	0002X	US 2 (MAIN) NE/O PARKVIEW @STILLWATER BR	C	I	.	18620	17020	.	16350
19	ORONO	00402	0002X	US 2 (PARK ST) NE/O US 2A (COLLEGE AVE)	C	I	.	12030	.	.	11920
19	ORONO	00406	0002X	US 2 (COLLEGE AVE) SW/O US 2 (PARK ST)	C	I	.	16610	.	.	15380
19	ORONO	00902	0002X	US 2 (PARK ST) NE/O CROSBY ST	M	I	12120
19	ORONO	01002	0002X	US 2 (PARK ST) NE/O RANGELEY RD	C	I	.	10970	.	.	10330
19	ORONO	02306	0002X	US 2 (MAIN ST) SW/O GOODRIDGE DR	C	I	.	15330	.	.	14170
19	ORONO	02706	0002X	US 2 (MAIN ST) SW/O WESTWOOD DR	C	I	.	15050	.	.	13860
19	ORONO	03001	0002X	US 2 (MAIN ST) N/O ISLAND AVE	C	I	13250
19	ORONO	03502	0002X	US 2 (MAIN ST) NE/O KELLEY RD	C	I	13130

2006 Maine Transportation Count Book

Penobscot

	TOWN	STATION	ROAD	LOCATION	TYPE	GROUP	AADT02	AADT03	AADT04	AADT05	AADT06
19	ORONO	03506	0002X	US 2 (MAIN ST) SW/O KELLEY RD	C	I	.	5970	.	.	5710
19	ORONO	02408	0016X	SR 16 (BENNOCH RD) NW/O FOREST AVE	C	I	.	2730	.	.	2280
19	ORONO	52903	00497	IR 497 (FOREST AVE) E/O IR 599(ESSEX ST)	C	I	.	2580	.	.	2410
19	ORONO	52908	00497	IR 497(FOREST AVE) NW/O IR 599(ESSEX ST)	C	I	.	2460	.	.	2420
19	ORONO	52901	00599	IR 599 (ESSEX RD) N/O IR 497(FOREST AVE)	C	I	170
19	ORONO	52905	00599	IR 599 (ESSEX ST) S/O IR 497(FOREST AVE)	C	I	.	2450	.	.	2340
19	ORONO	04002	00606	STILLWATER AVE NE/O FOREST AVE	C	I	.	6250	.	.	5970
19	ORONO	04006	00606	STILLWATER AVE SW/O FOREST AVE	C	I	.	5620	.	.	5450
19	ORONO	04304	00607	KELLEY RD SE/O STILLWATER AVE	C	I	.	1260	.	.	1330
19	ORONO	04308	00607	KELLEY RD NW/O STILLWATER AVE	C	I	.	110	.	.	.
19	ORONO	51202	0095S	I-95(SB) N/O ON RAMP FROM STILLWATER AVE	I	ATR51005	.	5830	.	5020	.
19	ORONO	51204	0095S	I-95 (SB) N/O OFF RAMP TO STILLWATER AVE	I	ATR51005	.	6420	.	5740	.
19	ORONO	51302	0095S	I-95 (SB) N/O ON RAMP FROM KELLEY RD	I	I	.	10720	.	11320	.
19	ORONO	51304	0095S	I-95 (SB) N/O OFF RAMP TO KELLEY RD	I	I	.	11320	.	11870	.
19	ORONO	51201	0095X	I-95 (NB) N/O OFF RAMP TO STILLWATER AVE	I	ATR51001	.	5420	.	5180	.
19	ORONO	51203	0095X	I-95(NB) N/O ON RAMP FROM STILLWATER AVE	I	ATR51001	.	6270	.	6390	.
19	ORONO	51301	0095X	I-95 (NB) N/O OFF RAMP TO KELLEY RD	I	I	.	10020	.	11290	.
19	ORONO	51303	0095X	I-95 (NB) N/O ON RAMP FROM KELLEY RD	I	I	.	10680	.	11980	.
19	ORONO	00905	50013	CROSBY ST S/O US 2 (PARK ST)	C	I	.	1140	.	.	900
19	ORONO	02407	50018	FOREST AVE W/O SR 16 (BENNOCH RD)	C	I	.	2370	.	.	1880
19	ORONO	04003	50018	FOREST AVE E/O STILLWATER AVE	C	I	1610
19	ORONO	04007	50018	FOREST AVE W/O STILLWATER AVE	C	I	.	3050	.	.	2880
19	ORONO	02308	50022	GOODRIDGE DR NW/O US 2 (MAIN)	C	I	.	1610	.	.	1030
19	ORONO	02103	50039	MILL ST(OW) E/O US 2 (MAIN ST)	C	I	1590
19	ORONO	00502	50042	MUNSON RD NE/O US 2A (COLLEGE AVE)	M	I	2880
19	ORONO	01907	50053	PINE ST W/O ELM ST	C	I	.	840	.	.	710
19	ORONO	02203	50053	PINE ST E/O US 2 (MAIN ST)	C	I	.	3550	.	.	3190
19	ORONO	02501	50064	SUMMER ST(OW) N/O MILL ST	C	I	.	1250	.	.	940
19	ORONO	00803	50079	LONG RD E/O MUNSON RD	M	I	11960
19	ORONO	01001	50101	RANGELEY RD N/O US 2 (PARK ST)	M	I	.	9500	.	.	9710
19	ORONO	03507	50114	KELLEY RD W/O US 2 (MAIN ST)	C	I	.	8630	.	.	8990
19	ORONO	01403	50118	SCHOODIC RD E/O SEBEC RD	M	I	2320
19	ORONO	03904	50607	KELLY RD SE/O I-95 RAMPS @ CUL	C	I	.	9180	.	.	9350
19	ORRINGTON	45302	0015X	SR 15 NE/O IR 682 (SNOWS CORNER RD)	C	I	.	10680	.	.	10250

2006 Maine Transportation Count Book

Penobscot

TOWN	STATION	ROAD	LOCATION	TYPE	GROUP	AADT02	AADT03	AADT04	AADT05	AADT06
19 ORRINGTON	45306	0015X	SR 15 SW/O IR 682 (SNOWS CORNER RD)	C	I	.	7940	.	.	7700
19 ORRINGTON	45505	0015X	SR 15 (RIVER RD) S/O IR 652 (CENTER RD)	C	I	.	6000	.	.	5940
19 ORRINGTON	45608	0015X	SR 15 (RIVER RD) NW/O IR 660(HOXIE HILL)	C	I	.	5270	.	.	5170
19 ORRINGTON	53208	0015X	SR 15 NW/O IR 689(BLAKE RD) @ RR XING#42	C	I	.	5320	.	.	5320
19 ORRINGTON	33108	00636	IR636(JOHNSON MILL) NW/O IR658(SWETTS PD	C	I	.	280	.	.	400
19 ORRINGTON	33502	00636	IR 636(JOHNSON MILL) NE/O IR 652(CENTER)	C	I	.	950	.	.	1100
19 ORRINGTON	33506	00636	IR 636(JOHNSON MILL) SW/O IR 652@BR#0862	C	I	460
19 ORRINGTON	44904	00652	IR 652 (CENTER DR) SE/O IR 681 (DOW RD)	C	I	.	350	.	.	340
19 ORRINGTON	44908	00652	IR 652 (CENTER DR) NW/O IR 681 (DOW RD)	C	I	280
19 ORRINGTON	45504	00652	IR 652 (CENTER DR) SE/O SR 15 (RIVER RD)	C	I	.	890	.	.	1110
19 ORRINGTON	45903	00658	IR 658 (SWETTS PD RD) E/O IR 681@BR#5285	C	I	230
19 ORRINGTON	53202	00658	IR 658 (SWETTS POND RD) NE/O SR 15	C	I	.	420	.	.	500
19 ORRINGTON	45603	00660	IR 660 (HOXIE HILL RD) E/O SR 15 (RIVER)	C	I	.	270	.	.	300
19 ORRINGTON	45905	00679	IR 679 (BETTS RD) S/O IR 658 (SWETTS PD)	C	I	360
19 ORRINGTON	44905	00681	IR 681 (DOW RD) S/O IR 652 (CENTER DR)	C	I	.	1020	.	.	990
19 ORRINGTON	45304	00682	IR 682 (SNOWS CORNER RD) SE/O SR 15	C	I	.	2650	.	.	2690
19 ORRINGTON	45001	00683	IR 683 (TANNERY RD) N/O IR 1397	C	I	.	2550	.	.	2450
19 ORRINGTON	45004	00683	IR 683(BREWER LK) SE/O IR 636(FIELDS PD)	C	I	.	1800	.	.	1640
19 ORRINGTON	78402	00683	IR 683(CENTER DR) NE/O IR4006(SWETTS PD)	C	I	.	800	.	.	750
19 ORRINGTON	46105	00691	IR 691 (FOWLER RD) S/O IR 636	C	I	670
19 ORRINGTON	46804	01395	IR 1395 (BREWER LAKE RD) SE/O IR 683	C	I	800
19 ORRINGTON	78404	04006	IR 4006(CENTER DR) SE/O IR683(CENTER DR)	C	I	770
19 PASSADUMKEAG	40901	0002X	US 2 N/O IR 1058 (UNION ST)	C	I	.	.	1690	.	.
19 PASSADUMKEAG	41005	0002X	US 2 S/O IR 568 (PLEASANT ST)	C	I	.	.	2050	.	.
19 PASSADUMKEAG	41004	00568	IR 568 (PLEASANT ST) SE/O US 2	C	I	.	.	560	.	.
19 PASSADUMKEAG	41102	00568	IR 568(PLEASANT ST) NE/O IR 1058(OAK ST)	C	I	.	.	240	.	.
19 PASSADUMKEAG	41202	00577	IR 577(CARIBOU RD) NE/O IR1058(UNION ST)	C	I	.	.	520	.	.
19 PASSADUMKEAG	41301	00579	IR 579(GOULDS RIDGE) N/O IR 568(PLEASNT)	C	I	.	.	50	.	.
19 PASSADUMKEAG	41305	00579	IR 579(GOULDS RIDGE) S/O IR568(PLEASNT)	C	I	.	.	130	.	.
19 PASSADUMKEAG	41207	01058	IR 1058(UNION ST) W/O IR 577(CARIBOU RD)	C	I	.	.	240	.	.
19 PATTEN	00101	0011X	SR 11/159 (MAINE) N/O SR 159 (HOULTON)	C	II	.	.	4470	.	.
19 PATTEN	00105	0011X	SR 11 (MAINE ST) S/O SR 159 (HOULTON ST)	C	II	.	.	3270	.	.
19 PATTEN	00405	0011X	SR 11 S/O SPRUCE ST	C	II	.	.	2790	.	.
19 PATTEN	01101	0011X	SR 11/159 (MAINE ST) N/O KATAHDIN ST	C	II	.	.	4070	.	.

County **2006 Maine Transportation Count Book**

Penobscot

TOWN	STATION	ROAD	LOCATION	TYPE	GROUP	AADT02	AADT03	AADT04	AADT05	AADT06
PATTEN	01301	0011X	SR 11 (MAINE ST) N/O SR 159 (WATERS RD)	C	II	.	.	2170	.	.
PATTEN	01305	0011X	SR 11/159 (MAINE ST) S/O SR 159 (WATERS)	C	II	.	.	3760	.	.
PATTEN	01501	0011X	SR 11 (MAINE ST) N/O CARVER ST	C	II	.	.	1850	.	.
PATTEN	81100	0011X	SR 11 @ STACYVILLE TL	C	II	.	.	2370	.	.
PATTEN	35607	00806	IR 806 (WATER RD) W/O SR 159	C	I	.	.	340	.	.
PATTEN	39007	00808	IR 808 (HAPPY CORNER RD) W/O SR 11	C	I	.	.	210	.	.
PATTEN	00203	00888	MILL ST E/O SR 11 (MAINE ST)	C	I	.	.	100	.	.
PATTEN	00604	00888	LOVEJOY RD SE/O STATION ST	C	I	.	.	150	.	.
PATTEN	00705	00890	STATION ST S/O SR 159 (HOULTON ST)	C	I	.	.	400	.	.
PATTEN	00107	00892	DEARBORN ST W/O SR 11 (MAINE ST)	C	I	.	.	290	.	.
PATTEN	01107	00892	KATAHDIN ST W/O SR 11/159 (MAINE ST)	C	I	.	.	490	.	.
PATTEN	01203	00896	SCRIBNER ST E/O GARDINER ST	C	I	.	.	190	.	.
PATTEN	01207	00896	SCRIBNER ST W/O GARDINER ST	C	I	.	.	470	.	.
PATTEN	01701	00896	PLEASANT ST N/O SR 159 (HOULTON ST)	C	I	.	.	330	.	.
PATTEN	00901	00900	GARDINER ST N/O SR 159 (HOULTON ST)	C	I	.	.	470	.	.
PATTEN	01201	00900	GARDINER ST N/O SCRIBNER ST	C	I	.	.	280	.	.
PATTEN	01205	00900	GARDINER ST S/O SCRIBNER ST	C	I	.	.	260	.	.
PATTEN	01503	00900	CARVER ST E/O SR 11 (MAINE ST)	C	I	.	.	170	.	.
PATTEN	00103	0159X	SR 159 (HOULTON ST) E/O SR 11 (MAINE ST)	C	I	.	.	1930	.	.
PATTEN	00707	0159X	SR 159 (HOULTON ST) W/O STATION ST	C	I	.	.	1800	.	.
PATTEN	01307	0159X	SR 159 (WATERS RD) W/O SR 11/159 (MAINE)	C	II	.	.	1360	.	.
PATTEN	35603	0159X	SR 159 E/O IR 806 (WATER RD) @ BR# 3898	C	II	.	.	1160	.	.
PATTEN	35608	0159X	SR 159 NW/O IR 806 (WATER RD)	C	II	.	.	900	.	.
PLYMOUTH	32101	0007X	SR 7 N/O SR 69	C	I	.	2340	.	.	1740
PLYMOUTH	32104	0007X	SR 7 SE/O SR 69 @BR# 2287	C	I	1980
PLYMOUTH	66107	00420	IR 420 (CLARK RD) W/O IR 472(RUTLAND RD)	C	I	390
PLYMOUTH	66201	00453	IR 453 (RIDGE RD) N/O SR 69	C	I	.	650	.	.	800
PLYMOUTH	32106	00472	IR 472 (CLARK RD) SW/O SR 69 @ BR# 5732	C	I	760
PLYMOUTH	66106	00472	IR 472(RUTLAND RD) SW/O IR 420(CLARK RD)	C	I	390
PLYMOUTH	42708	00520	IR 520 (LOUD RD) NW/O IR 1234 @ BR# 5854	C	I	240
PLYMOUTH	32103	0069X	SR 69 E/O SR 7	C	I	.	1080	.	.	850
PLYMOUTH	32108	0069X	SR 69 NW/O SR 7 @BR# 2982	C	I	.	970	.	.	1080
PLYMOUTH	66208	0069X	SR 69 NW/O IR 453 (RIDGE RD)	C	I	.	840	.	.	850
PLYMOUTH	52202	0095S	I-95 (SB) S/O ON RAMP FROM SR 7	I	ATR52104	.	10060	.	9540	.

County **2006 Maine Transportation Count Book**

Penobscot		STATION	ROAD	LOCATION	TYPE	GROUP	AADT02	AADT03	AADT04	AADT05	AADT06
TOWN											
19	PLYMOUTH	52204	0095S	I-95 (SB) N/O ON RAMP FROM SR 7	I	ATR52104	.	9670	.	8740	.
19	PLYMOUTH	52206	0095S	I-95 (SB) N/O OFF RAMP TO SR 7	I	ATR52104	.	10080	.	9480	.
19	PLYMOUTH	52201	0095X	I-95 (NB) S/O OFF RAMP TO SR 7	I	ATR52103	.	10180	.	9580	.
19	PLYMOUTH	52203	0095X	I-95 (NB) N/O OFF RAMP TO SR 7	I	ATR52103	.	9630	.	8750	.
19	PLYMOUTH	52205	0095X	I-95 (NB) N/O ON RAMP FROM SR 7	I	ATR52103	.	10170	.	9550	.
19	PRENTISS PLT	44204	00692	IR 692 (TAR RIDGE RD) SE/O SR 169	C	I	.	.	140	.	.
19	PRENTISS PLT	37206	00757	IR 757(TUCKER RIDGE) SW/O SR170 @BR#3808	C	I	.	.	50	.	.
19	PRENTISS PLT	40303	00928	IR 928 (OSGOOD RD) E/O SR 170	C	I	.	.	70	.	.
19	PRENTISS PLT	44402	0169X	SR 169 (DANFORTH RD) NE/O SR 171 (DREW)	C	II	.	.	230	.	.
19	PRENTISS PLT	53805	0170X	SR 170 S/O IR 703	C	II	.	.	290	.	.
19	PRENTISS PLT	44401	0171X	SR 171 (DREW RD) N/O SR 169 (DANFORTH)	C	II	.	.	110	.	.
19	SEBOEIS PLT	39800	00565	IR 565 (SEBOEIS RD) @ BR# 5114	C	I	.	.	210	.	.
19	SPRINGFIELD	43602	0006X	SR 6 (MAIN ST) NE/O IR 865 @ GOTT BK	C		.	.	2330	.	1810
19	SPRINGFIELD	43702	0006X	SR 6 NE/O SR 169/170	C	II	.	.	1800	.	.
19	SPRINGFIELD	43707	0006X	SR 6 W/O SR 169/170	C	II	.	.	2440	.	.
19	SPRINGFIELD	43803	0006X	SR 6 E/O IR 715 (BOTTLE LAKE RD)	C	II	.	.	1410	.	.
19	SPRINGFIELD	37103	00700	IR 700(COFFIN RD) E/O SR169/170 @BR#0868	C	I	.	.	60	.	.
19	SPRINGFIELD	43805	00715	IR 715 (BOTTLE LAKE RD) S/O SR 6	C	II	.	.	490	.	.
19	SPRINGFIELD	48108	00759	IR 759 (WEBSTER RD) NW/O SR 169/170	C	I	.	.	110	.	.
19	SPRINGFIELD	36608	01600	IR 1600 (OLD WINN RD) NW/O SR 6	C	I	.	.	50	.	.
19	SPRINGFIELD	37101	0169X	SR 169/170 N/O IR 700 (COFFIN RD)	C	II	.	.	810	.	.
19	SPRINGFIELD	43701	0169X	SR 169/170 N/O SR 6	C	II	.	.	960	.	.
19	SPRINGFIELD	48102	0169X	SR 169/170 NE/O IR 759	C	I	.	.	660	.	.
19	SPRINGFIELD	44101	0170X	SR 170 N/O SR 169 @ WEBSTER PLT TL	C	II	.	.	210	.	.
19	STACYVILLE	54804	0011X	SR 11 SE/O IR 793 (SWIFT BROOK RD)	C	II	.	.	350	.	.
19	STACYVILLE	54805	0011X	SR 11 S/O IR 793 (SWIFT BROOK RD)	C	II	.	.	390	.	.
19	STACYVILLE	54902	0011X	SR 11 NE/O IR 812 (KELLY HILL RD)	C	II	.	.	390	.	.
19	STACYVILLE	54808	00793	IR 793 (SWIFT BROOK RD) NW/O SR 11	C	I	.	.	60	.	.
19	STACYVILLE	54903	00812	IR 812 (KELLY HILL RD) E/O SR 11	C	I	.	.	90	.	.
19	STETSON	33801	00367	IR 367 (STETSON RD) N/O SR 222	C	I	.	630	.	.	790
19	STETSON	67102	00380	IR 380 (MT PLEASANT RD) NE/O SR 143	C	I	.	650	.	.	710
19	STETSON	67106	00380	IR 380 (E NEWPORT RD) SW/O SR 143	C	I	.	970	.	.	710
19	STETSON	33805	0143X	SR 143 S/O SR 222	C	I	.	980	.	.	940
19	STETSON	67104	0143X	SR 143 SE/O IR 380 (MT PLEASANT RD)	C	I	.	840	.	.	870

2006 Maine Transportation Count Book

Penobscot

	TOWN	STATION	ROAD	LOCATION	TYPE	GROUP	AADT02	AADT03	AADT04	AADT05	AADT06
19	STETSON	33803	0222X	SR 222 E/O SR 143	C	I	.	1200	.	.	1070
19	STETSON	33807	0222X	SR 222 W/O SR 143	C	I	.	1360	.	.	1050
19	STETSON	73903	0222X	SR 222 E/O IR 411 (MERRILL RD)	C	I	.	1400	.	.	1310
19	STETSON	73907	0222X	SR 222 W/O IR 409 (LAPOINT RD)	C	I	.	1180	.	.	1040
19	T 3 INDIAN PURCHASE	40506	0011X	SR 11 SW/O IR 1673 @ T4 TL	C	II+III	.	.	1060	.	.
19	T 4 INDIAN PURCHASE	37502	0011X	SR 11 NE/O IR 2617(PW)(N/O RR XING# 333)	C	II+III	.	.	1080	.	.
19	TWP 01 R 08 WELS	43200	00818	IR 818 @ T3 INDIAN PURCHASE TL	C	III	.	.	1100	.	.
19	TWP 02 R 08 NWP	50802	0095S	I-95 (SB) N/O ON RAMP FROM LINCOLN SPUR	I	ATR50702	.	2910	.	2720	.
19	TWP 02 R 08 NWP	50801	0095X	I-95 (NB) N/O OFF RAMP TO LINCOLN SPUR	I	ATR50701	.	2710	.	2620	.
19	TWP 06 R 07 WELS	44508	00774	IR 774 NW/O IR 787 @ BR# 0879	C	III	.	.	30	.	.
19	TWP 06 R 07 WELS	44503	00787	IR 787 (PARK TOTE) E/O IR 774 @ BR# 6044	C	III	.	.	180	.	.
19	TWP 06 R 07 WELS	44506	00787	IR 787 (PARK TOTE) SW/O IR 774	C	III	.	.	180	.	.
19	VEAZIE	00106	0002X	US 2 (STATE ST) SW/O RIVERVIEW DR @TL	B	I	.	.	.	4590	.
19	VEAZIE	00202	0002X	US 2 (STATE ST) NE/O MT HOPE AVE	B	I	.	7080	.	.	.
19	VEAZIE	00302	0002X	US 2 (STATE ST) NE/O SCHOOL ST	C	I	.	7290	.	.	.
19	VEAZIE	00306	0002X	US 2 (STATE ST) SW/O SCHOOL ST	C	I	.	7100	.	.	.
19	VEAZIE	00402	0002X	US 2 (STATE ST) NE/O MAY ST	C	I	6570
19	VEAZIE	00601	0002X	US 2 (STATE ST) N/O MAIN ST	C	I	.	5330	6450	.	4940
19	VEAZIE	00606	0002X	US 2 (STATE ST) SW/O MAIN ST	C	I	.	5570	.	.	4720
19	VEAZIE	00308	00609	CHASE RD NW/O US 2 (STATE ST)	C	I	.	1860	.	.	1760
19	VEAZIE	00208	10190	MT HOPE AVE NW/O US 2(STATE) @ BANGOR TL	C	I	.	2770	.	2850	2440
19	VEAZIE	00503	61199	MAIN ST E/O CUT TO US 2 (STATE) @MCRR BR	C	I	.	770	.	.	660
19	VEAZIE	00605	61199	MAIN ST S/O US 2 (STATE ST)	C	I	.	460	.	.	470
19	VEAZIE	00404	62049	MAY ST SE/O US 2 (STATE ST)	C	I	70
19	VEAZIE	00304	62467	SCHOOL ST SE/O US 2 (STATE ST)	C	I	.	1700	.	.	1750
19	WINN	53502	0002X	US 2 NE/O SR 168	C	I	.	.	3100	.	.
19	WINN	53506	0002X	US 2 SW/O SR 168	C	I	.	.	2590	.	.
19	WINN	62202	0002X	US 2 NE/O IR 935 (N JCT)	C	I	.	.	2960	.	.
19	WINN	63306	0002X	US 2 SW/O IR 935 (S JCT)	C	I	.	.	2650	.	.
19	WINN	53504	0168X	SR 168 SE/O US 2	C	II	.	.	1270	.	.