

# Traffic Volume Counts 2006 Annual Report



## *MaineDOT*

**Data collected and published by the  
State of Maine**

**Department of Transportation  
Traffic Engineering Division**

**In cooperation with the  
United States Department of Transportation  
Federal Highway Administration**

## **TABLE of CONTENTS**

**Forward**

**Continuous Count Program**

**24 Hour Traffic Data Collection Program**

**Description of Headings, Symbols, and Abbreviations**

**Map of State Count Zones**

**Graph of 2006 Weekly Group Mean Factors**

**List of 2006 Weekly Group Mean Factors**

**List of 2006 Weekly Group Mean Factors as a Percent of AADT**

**Traffic Volume Counts by County, Town, and Route**

## **FOREWORD**

The Department of Transportation, Traffic Engineering Division, and Traffic Monitoring Section is responsible for the collection of all types of traffic data and maintenance of a statewide traffic volume database. The reduction and reporting of traffic volumes and vehicle classification data are accomplished through two types of count programs. They are as follows:

### **CONTINUOUS COUNT PROGRAM**

Traffic volumes are monitored on a continuous year round basis at forty-three permanent recorder sites located on major highways throughout the State. These hourly counts are collected to produce an average weekday figure, a weekly average day, a monthly average day, and a monthly average weekday. This information is compiled to develop an Annual Average Daily Traffic (AADT) figure for each location. The AADT is computed from the average of the weekly average day totals for the year.

The increasing demand to determine the types of vehicles (e.g. passenger cars, single-unit trucks, and semi's) traveling Maine's highways has prompted the development of a Continuous Classification Program. Currently, the department has eleven locations along routed highways that collect data based on thirteen categories as defined by the Federal Highway Administration. An AADT is computed based on the total volume as well as summary data for individual vehicle types. Future plans include the installation of additional sites statewide over the next several years.

### **24 HOUR TRAFFIC DATA COLLECTION PROGRAM**

Between April 1st and November 15th of each year, 24 hour traffic counts (i.e., coverage counts) are gathered to monitor traffic flow and changes in traffic patterns. These counts are generally taken at intersections with major routes and/or other significant roads, Compact Urban Lines (CUL), or Town Lines (TL), or in coordination with ongoing projects or special traffic studies for the Department.

Additionally, 24-hour vehicle classification counts are performed in conjunction with the coverage counts to provide a comprehensive view of traffic along the routed highways.

The State is divided into three count zones:

**ZONE I** : Southwestern Maine to western Penobscot Bay region. This zone includes all of York, Cumberland, Sagadahoc, Lincoln, Knox, and Waldo counties, Oxford county from Albany Twp/Waterboro West & Oxford, Otisfield, as well as Poland, and Mechanic Falls in Androscoggin county.

**ZONE II** : Western/Central Maine and eastern Penobscot Bay region. This zone includes all of Androscoggin except Poland, and Mechanic Falls, Franklin, Kennebec counties, the remainder of Oxford county, Somerset county from Bingham south plus between Flagstaff Lake area and Kennebec River, southern Penobscot county, and western Hancock county.

**ZONE III** : Northern and eastern Maine. This zone includes all of Aroostook, Piscataquis, Washington counties, northern and southeastern Hancock county, Penobscot county from Lagrange north, and the remainder of Somerset county.

These zones are counted on a five year cycle: Zones I and II are counted twice and Zone III once during each five year period. The coverage count program also consists of the “Special Counts” taken each year to satisfy Departmental needs, local requests, and Federal requirements. These include the annual collection of data for the State’s four urbanized areas (BACTS, KACTS, ATRC, and PACTS), Interstate System counts, and data collected from the various traffic studies conducted throughout the year. The 2006 Program included 4361 counts accomplished.

Once the AADT’s have been computed for all of the permanent recorder locations, weekly factors for each station are computed by dividing the AADT by each average weekly figure. Those stations which exhibit similar traffic patterns are assembled and placed into one of three groups:

**URBAN** : Roadways which carry commuter traffic and exhibit little seasonal change in traffic volumes.

**ARTERIAL** : Roadways which carry commuter traffic but exhibit moderate seasonal changes in traffic volumes.

**RECREATIONAL** : Roadways which are heavily influenced by seasonal traffic.

Within each of the three groups, a factor for each week is computed by averaging the weekly factors from each station within the group.

The 2006 Weekly Group Mean Factors were developed by averaging the Weekly Group Mean Factor for 2003, 2004 and 2005. The following pages show the graph of the 2006 Weekly Group Mean Factors, a list of these factors, and the 2006 Weekly Group Mean Factor as a percent of the AADT.

The 24-hour raw data may now be grouped and assigned a factor to produce an AADT. Growth factors for expanding traffic in uncounted zones are developed utilizing data from the permanent recorders and comparing it to the data from the previous year.

The updated AADT's are entered into the Maine Department of Transportation's database to be used by various Departmental employees.

### DESCRIPTION of HEADINGS, SYMBOLS, AND ABBREVIATIONS

The following is a description of the column headings, symbols, and abbreviations used for the Coverage Count Section.

**TOWN**            The town in which a count was taken

**ROUTE**            The road or highway on which the count was taken.

#### Non-Interstate Highways and Roads

---- X indicates a Routed Highway

0196X = SR 196                      0001X = US Route 1

---- A or --- B indicates an Alternate Routed Highway

0001A = US Route 1A    0009B = SR 9B

---- C indicates a Business Route

0001C = Business US Route 1, 1A, or 1B

0025C = Business SR 25

Just a number with no letter OR no numbers or letters indicates a non-routed highway

= Pine Hill Road            00001 = Hubbard Road

01414 = IR 1414            00991 = IR 991 (Biddeford Road)

**Interstate System**

---- X indicates Northbound or Eastbound

0095X = I-95 Northbound

0395X = I-395 Eastbound

---- S indicates Southbound

0095S = I-95 Southbound

---- W indicates Westbound

0395W = I-395 Westbound

**LOCATION**

A description of where the count was taken.

APP = Approach

ART = Arterial

AVE = Avenue

BK = Brook

BLVD = Boulevard

BR = Bridge

CIR = Circle

CL = County Line

CNR = Corner

CONN = Connector

CTR = Center

CUL = Compact Urban Line

CWY = Cause way

CV = Cove

DR = Drive

EB = Eastbound

ENT = Entrance

FL=Fall

FLS=Falls

FT = Fort

HTS = Heights

HWY = Highway

INT'L = International

IR = Inventory Road

LG = Long

LK = Lake

LN = Lane

LWR = Lower

MEM = Memorial

MT = Mount

MTN = Mountain

NB = Northbound

NH = New Hampshire

OW = One Way

PD = Pond

PK = Park

PKWY = Park Way

PL = Place

PT = Point

PW = Private Way

PZ = Plaza

RD = Road

RDG = Ridge

RMP = Ramp

RR = Railroad

RV = River

SB = Southbound

SL = State Line

SQ = Square

SR = State Route

ST = Street

STA = Station

STR = Stream

TER = Terrace

TL = Town Line

TPK = Turnpike

TR = Trail

UPR = Upper

US = United States Route

WB = Westbound

N/O, NE/O, E/O, etc. = North of, Northeast of, East of, etc.

**TYPE**

Category for each count taken.

- A Permanent Recorder Count
- B BACTS Count
- C Coverage Count
- I Interstate Count
- K KACTS Count
- L ATRC Count (Formerly LACTS)
- M Municipal, Town, Regional Count
- P PACTS Count
- S Special Count
- T Turning Movement Count
- Z Speed Count

**GROUP**

The factor group assigned to the location.

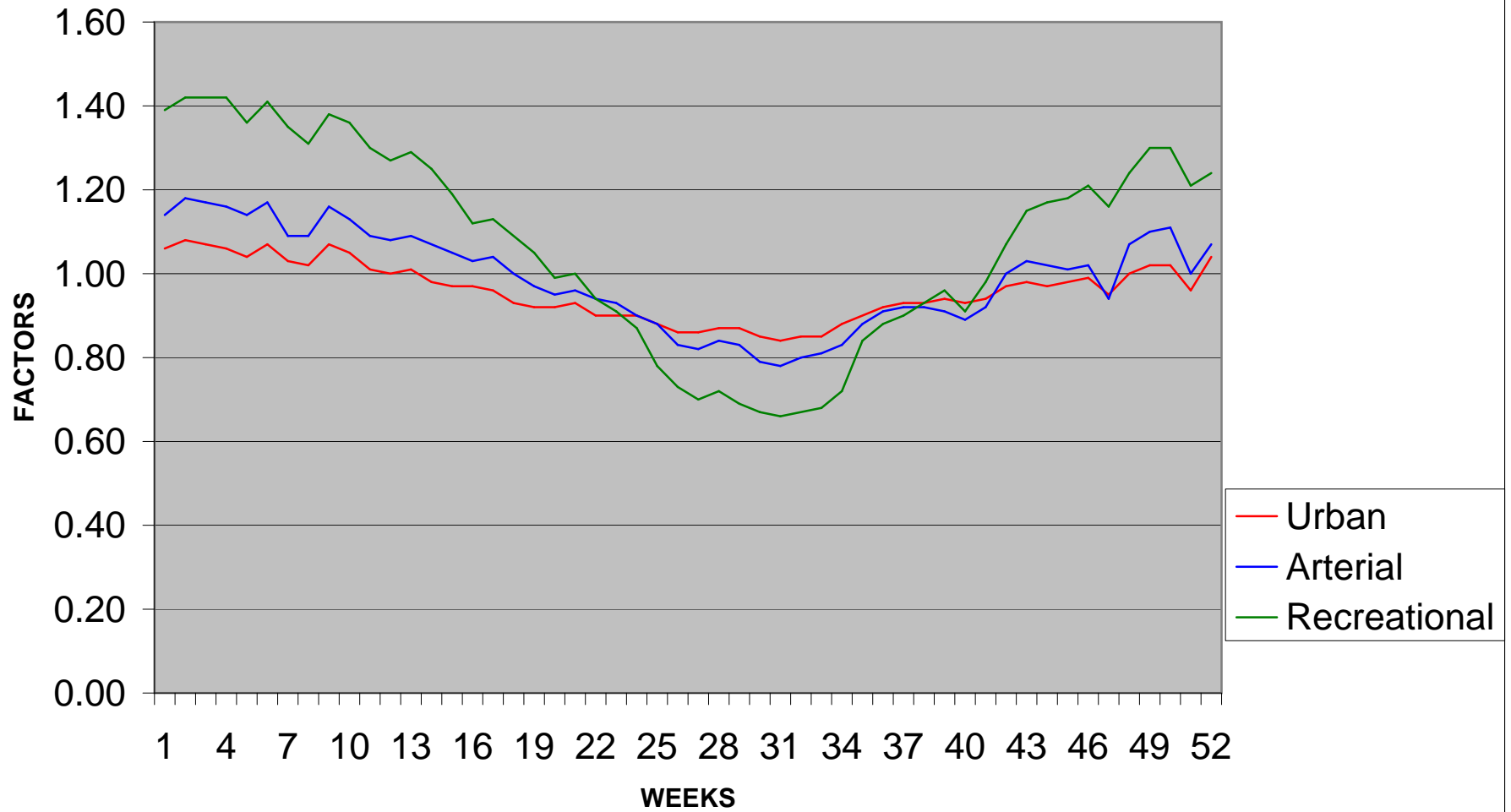
- I Urban Group            II Arterial Group
- III Recreational Group    ATR Permanent Recorder Controlled Group

**AADT**

Annual Average Daily Traffic

# 2006 WEEKLY GROUP FACTORS

AVERAGE: 2003, 2004, 2005



2006  
WEEKLY GROUP MEAN FACTORS  
AVERAGE: 2003, 2004, 2005

			Month	Urban	Arterial	recreation	Group	Group	Group	Year
Month	Start Date	Dates	Week #	Group I	Group II	Group III	I + II	II + III	I + III	Week #
Jan/Feb	(1)	2,3,4,5,6	1	1.06	1.14	1.39	1.10	1.27	1.23	1
	(8)	9,10,11,1	2	1.08	1.18	1.42	1.13	1.30	1.25	2
	(15)	16,17,18	3	1.07	1.17	1.42	1.12	1.30	1.25	3
	(22)	23,24,25	4	1.06	1.16	1.42	1.11	1.29	1.24	4
	(29)	30,31,1,2	5	1.04	1.14	1.36	1.09	1.25	1.20	5
Feb/Mar	(5)	6,7,8,9,1	1	1.07	1.17	1.41	1.12	1.29	1.24	6
	(12)	13,14,15	2	1.03	1.09	1.35	1.06	1.22	1.19	7
	(19)	20,21,22	3	1.02	1.09	1.31	1.06	1.20	1.17	8
	(26)	27,28,1,2	4	1.07	1.16	1.38	1.12	1.27	1.23	9
March	(5)	6,7,8,9,1	1	1.05	1.13	1.36	1.09	1.25	1.21	10
	(12)	13,14,15	2	1.01	1.09	1.30	1.05	1.20	1.16	11
	(19)	20,21,22	3	1.00	1.08	1.27	1.04	1.18	1.14	12
	(26)	27,28,29	4	1.01	1.09	1.29	1.05	1.19	1.15	13
April/May	(2)	3,4,5,6,7	1	0.98	1.07	1.25	1.03	1.16	1.12	14
	(9)	10,11,12	2	0.97	1.05	1.19	1.01	1.12	1.08	15
	(16)	17,18,19	3	0.97	1.03	1.12	1.00	1.08	1.05	16
	(23)	24,25,26	4	0.96	1.04	1.13	1.00	1.09	1.05	17
	(30)	1,2,3,4,5	5	0.93	1.00	1.09	0.97	1.05	1.01	18
May/Jun	(7)	8,9,10,11	1	0.92	0.97	1.05	0.95	1.01	0.99	19
	(14)	15,16,17	2	0.92	0.95	0.99	0.94	0.97	0.96	20
	(21)	22,23,24	3	0.93	0.96	1.00	0.95	0.98	0.97	21
	(28)	29,30,31	4	0.90	0.94	0.94	0.92	0.94	0.92	22
June	(4)	5,6,7,8,9	1	0.90	0.93	0.91	0.92	0.92	0.91	23

	(11)	12,13,14	2	0.90	0.90	0.87	0.90	0.89	0.89	24
	(18)	19,20,21	3	0.88	0.88	0.78	0.88	0.83	0.83	25
	(25)	26,27,28	4	0.86	0.83	0.73	0.85	0.78	0.80	26
Jul/Aug	(2)	3,4,5,6,7	1	0.86	0.82	0.70	0.84	0.76	0.78	27
	(9)	10,11,12	2	0.87	0.84	0.72	0.86	0.78	0.80	28
	(16)	17,18,19	3	0.87	0.83	0.69	0.85	0.76	0.78	29
	(23)	24,25,26	4	0.85	0.79	0.67	0.82	0.73	0.76	30
	(30)	31,1,2,3,	5	0.84	0.78	0.66	0.81	0.72	0.75	31
Aug/Sep	(6)	7,8,9,10,	1	0.85	0.80	0.67	0.83	0.74	0.76	32
	(13)	14,15,16	2	0.85	0.81	0.68	0.83	0.75	0.77	33
	(20)	21,22,23	3	0.88	0.83	0.72	0.86	0.78	0.80	34
	(27)	28,29,30	4	0.90	0.88	0.84	0.89	0.86	0.87	35
Septemb	(3)	4,5,6,7,8	1	0.92	0.91	0.88	0.92	0.90	0.90	36
	(10)	11,12,13	2	0.93	0.92	0.90	0.93	0.91	0.92	37
	(17)	18,19,20	3	0.93	0.92	0.93	0.93	0.93	0.93	38
	(24)	25,26,27	4	0.94	0.91	0.96	0.93	0.94	0.95	39
Oct/Nov	(1)	2,3,4,5,6	1	0.93	0.89	0.91	0.91	0.90	0.92	40
	(8)	9,10,11,1	2	0.94	0.92	0.98	0.93	0.95	0.96	41
	(15)	16,17,18	3	0.97	1.00	1.07	0.99	1.04	1.02	42
	(22)	23,24,25	4	0.98	1.03	1.15	1.01	1.09	1.07	43
	(29)	30,31,1,2	5	0.97	1.02	1.17	1.00	1.10	1.07	44
Nov/Dec	(5)	6,7,8,9,1	1	0.98	1.01	1.18	1.00	1.10	1.08	45
	(12)	13,14,15	2	0.99	1.02	1.21	1.01	1.12	1.10	46
	(19)	20,21,22	3	0.95	0.94	1.16	0.95	1.05	1.06	47
	(26)	27,28,29	4	1.00	1.07	1.24	1.04	1.16	1.12	48
Decembe	(3)	4,5,6,7,8	1	1.02	1.10	1.30	1.06	1.20	1.16	49
	(10)	11,12,13	2	1.02	1.11	1.30	1.07	1.21	1.16	50
	(17)	18,19,20	3	0.96	1.00	1.21	0.98	1.11	1.09	51
	(24)	25,26,27	4	1.04	1.07	1.24	1.06	1.16	1.14	52

2006  
WEEKLY GROUP MEAN FACTORS  
AVERAGE: 2003, 2004, 2005  
AS PERCENT OF AADT

			Month	Urban	Arterial	recreation	Group	Group	Group	Year
Month	Start Date	Dates	Week #	Group I	Group II	Group III	I + II	II + III	I + III	Week #
Jan/Feb	(1)	2,3,4,5,6	1	94.34	87.72	71.94	90.91	78.74	81.30	1
	(8)	9,10,11,1	2	92.59	84.75	70.42	88.50	76.92	80.00	2
	(15)	16,17,18	3	93.46	85.47	70.42	89.29	76.92	80.00	3
	(22)	23,24,25	4	94.34	86.21	70.42	90.09	77.52	80.65	4
	(29)	30,31,1,2	5	96.15	87.72	73.53	91.74	80.00	83.33	5
Feb/Mar	(5)	6,7,8,9,1	1	93.46	85.47	70.92	89.29	77.52	80.65	6
	(12)	13,14,15	2	97.09	91.74	74.07	94.34	81.97	84.03	7
	(19)	20,21,22	3	98.04	91.74	76.34	94.34	83.33	85.47	8
	(26)	27,28,1,2	4	93.46	86.21	72.46	89.29	78.74	81.30	9
March	(5)	6,7,8,9,1	1	95.24	88.50	73.53	91.74	80.00	82.64	10
	(12)	13,14,15	2	99.01	91.74	76.92	95.24	83.33	86.21	11
	(19)	20,21,22	3	100.00	92.59	78.74	96.15	84.75	87.72	12
	(26)	27,28,29	4	99.01	91.74	77.52	95.24	84.03	86.96	13
April/May	(2)	3,4,5,6,7	1	102.04	93.46	80.00	97.09	86.21	89.29	14
	(9)	10,11,12	2	103.09	95.24	84.03	99.01	89.29	92.59	15
	(16)	17,18,19	3	103.09	97.09	89.29	100.00	92.59	95.24	16
	(23)	24,25,26	4	104.17	96.15	88.50	100.00	91.74	95.24	17
	(30)	1,2,3,4,5	5	107.53	100.00	91.74	103.09	95.24	99.01	18
May/Jun	(7)	8,9,10,11	1	108.70	103.09	95.24	105.26	99.01	101.01	19
	(14)	15,16,17	2	108.70	105.26	101.01	106.38	103.09	104.17	20
	(21)	22,23,24	3	107.53	104.17	100.00	105.26	102.04	103.09	21
	(28)	29,30,31	4	111.11	106.38	106.38	108.70	106.38	108.70	22
June	(4)	5,6,7,8,9	1	111.11	107.53	109.89	108.70	108.70	109.89	23

	(11)	12,13,14	2	111.11	111.11	114.94	111.11	112.36	112.36	24
	(18)	19,20,21	3	113.64	113.64	128.21	113.64	120.48	120.48	25
	(25)	26,27,28	4	116.28	120.48	136.99	117.65	128.21	125.00	26
Jul/Aug	(2)	3,4,5,6,7	1	116.28	121.95	142.86	119.05	131.58	128.21	27
	(9)	10,11,12	2	114.94	119.05	138.89	116.28	128.21	125.00	28
	(16)	17,18,19	3	114.94	120.48	144.93	117.65	131.58	128.21	29
	(23)	24,25,26	4	117.65	126.58	149.25	121.95	136.99	131.58	30
	(30)	31,1,2,3,	5	119.05	128.21	151.52	123.46	138.89	133.33	31
Aug/Sep	(6)	7,8,9,10,	1	117.65	125.00	149.25	120.48	135.14	131.58	32
	(13)	14,15,16	2	117.65	123.46	147.06	120.48	133.33	129.87	33
	(20)	21,22,23	3	113.64	120.48	138.89	116.28	128.21	125.00	34
	(27)	28,29,30	4	111.11	113.64	119.05	112.36	116.28	114.94	35
Septemb	(3)	4,5,6,7,8	1	108.70	109.89	113.64	108.70	111.11	111.11	36
	(10)	11,12,13	2	107.53	108.70	111.11	107.53	109.89	108.70	37
	(17)	18,19,20	3	107.53	108.70	107.53	107.53	107.53	107.53	38
	(24)	25,26,27	4	106.38	109.89	104.17	107.53	106.38	105.26	39
Oct/Nov	(1)	2,3,4,5,6	1	107.53	112.36	109.89	109.89	111.11	108.70	40
	(8)	9,10,11,1	2	106.38	108.70	102.04	107.53	105.26	104.17	41
	(15)	16,17,18	3	103.09	100.00	93.46	101.01	96.15	98.04	42
	(22)	23,24,25	4	102.04	97.09	86.96	99.01	91.74	93.46	43
	(29)	30,31,1,2	5	103.09	98.04	85.47	100.00	90.91	93.46	44
Nov/Dec	(5)	6,7,8,9,1	1	102.04	99.01	84.75	100.00	90.91	92.59	45
	(12)	13,14,15	2	101.01	98.04	82.64	99.01	89.29	90.91	46
	(19)	20,21,22	3	105.26	106.38	86.21	105.26	95.24	94.34	47
	(26)	27,28,29	4	100.00	93.46	80.65	96.15	86.21	89.29	48
Decembe	(3)	4,5,6,7,8	1	98.04	90.91	76.92	94.34	83.33	86.21	49
	(10)	11,12,13	2	98.04	90.09	76.92	93.46	82.64	86.21	50
	(17)	18,19,20	3	104.17	100.00	82.64	102.04	90.09	91.74	51
	(24)	25,26,27	4	96.15	93.46	80.65	94.34	86.21	87.72	52

## 2006 Maine Transportation Count Book

Oxford

	TOWN	STATION	ROAD	LOCATION	TYPE	GROUP	AADT02	AADT03	AADT04	AADT05	AADT06
17	ADAMSTOWN TWP	37000	0016X	SR 16 @ BR# 3540	C	III	.	420	.	.	400
17	ADAMSTOWN TWP	50600	0016X	SR 16 (WILSONS MILLS RD) @ RANGELEY TL	C	III	.	710	.	.	680
17	ADAMSTOWN TWP	52605	0016X	SR 16 S/O IR 3726 (BARK RD) @ BR# 0520	C	III	.	.	.	.	400
17	ADAMSTOWN TWP	52606	03726	(PW)IR 3726(BARK RD) SW/O SR 16@BR# 3861	C	III	.	.	.	.	20
17	ALBANY TWP	33506	0005X	SR 5/35 (CROOKED RIVER CWY) SW/O IR 552	C	ATR32601	.	1050	.	.	.
17	ALBANY TWP	33508	0005X	SR 5(SONGO PD RD) NW/O IR 552(VERNON ST)	C	II+III	.	.	.	950	.
17	ALBANY TWP	33701	0005X	SR 5/35 (CROOKED RIVER CWY) N/O SR 35	C	ATR32601	.	1200	.	960	.
17	ALBANY TWP	33708	0005X	SR 5 (MAINE) NW/O SR 5/35 @ BR# 5079	C	II+III	.	1290	.	1270	.
17	ALBANY TWP	33808	0005X	SR 5 (CROOKED RIVER CWY) NW/O SR 5/35	C	ATR32601	.	1190	.	.	.
17	ALBANY TWP	33502	0035X	IR552(VERNON ST) NE/O IR 723(HUNTS CNR)	C	II	.	430	.	450	.
17	ALBANY TWP	33704	0035X	SR 35 (MAINE ST) SE/O SR 5	C	ATR32601	.	1930	.	1550	.
17	ALBANY TWP	61705	00721	IR 2389 S/O IR 730 @ BR# 0793	C	II	.	.	.	10	.
17	ALBANY TWP	61805	00721	IR 721 (FLAT RD) S/O IR 2385 @ BR# 0718	C	II	.	.	.	30	.
17	ALBANY TWP	61900	00721	IR 721 (CROCKER POND RD) @ BR# 0719	C	II	.	.	.	30	.
17	ALBANY TWP	33504	00723	IR 723(HUNTS CNR RD) SE/O IR 552(VERNON)	C	II	.	460	.	500	.
17	ALBANY TWP	59106	00734	IR 734(WARDWELL RD)SW/O IR 723 @BR# 0725	C	II	.	.	.	40	.
17	ANDOVER	30904	0005X	SR 5 SE/O SR 120	C	II+III	.	1150	.	.	1230
17	ANDOVER	31905	0005X	SR 5 S/O IR 343 (RUMFORD CTR RD)	C	II+III	.	870	.	.	800
17	ANDOVER	30901	00305	IR 305 (N ANDOVER RD) N/O SR 120	C	II	.	.	.	.	1030
17	ANDOVER	49201	00305	IR 305 (N ANDOVER) N/O IR 2049(PLEASANT)	C	II	.	840	.	.	820
17	ANDOVER	63800	00305	IR 305 @ BR# 0649 @ SAWYER BROOK	C	II+III	.	80	.	.	.
17	ANDOVER	30907	00306	IR 306 (UPTON RD) W/O SR 5	C	II	.	570	.	.	570
17	ANDOVER	31004	00347	IR 347 (E ANDOVER RD) SE/O SR 120	C	I	.	460	.	.	460
17	ANDOVER	48204	00347	IR 347 (FARMERS HILL RD) SE/O IR 2047	C	I	.	280	.	.	360
17	ANDOVER	30903	0120X	SR 120 E/O SR 5	C	I	.	1060	.	.	1220
17	ANDOVER	31003	0120X	SR 120 E/O IR 347 (E ANDOVER RD)	C	I	.	720	.	.	800
17	ANDOVER	31001	01889	IR 1889 (SOUTH ARM RD) N/O SR 120	C	II+III	.	230	.	.	230
17	ANDOVER	48501	01889	IR 1889(S ARM RD) N/O IR324(LOHNES FARM)	C	II+III	.	160	.	.	190
17	BETHEL	03203	0002C	RAILROAD ST (OW) E/O US 2/SR 5 @ BR#2483	C	II	.	1210	.	.	1140
17	BETHEL	32601	0002X	US 2/SR 5/26 N/O IR 662 (BETHEL RD)	A		6240	6290	.	.	.
17	BETHEL	03005	0002X	US 2/SR 5/26 RAMP S/O SR 5/26 (RAILROAD)	C	II	.	.	.	.	870
17	BETHEL	03204	0002X	US 2/SR 5 SE/O RAILROAD ST	C	ATR34304	.	5380	.	.	5070
17	BETHEL	03307	0002X	US 2 W/O SR 5/35 (LOVERS LN)	C	III	.	4700	.	.	4260
17	BETHEL	03601	0002X	US 2/SR 5/26 (MAYVILLE RD) N/O PARKWAY	C	ATR34304	.	8310	.	.	8690

# 2006 Maine Transportation Count Book

County

Oxford

TOWN	STATION	ROAD	LOCATION	TYPE	GROUP	AADT02	AADT03	AADT04	AADT05	AADT06
BETHEL	03605	0002X	US 2/SR 5/26(MAYVILLE RD) S/O PARKWAY	C	ATR34304	.	5880	.	.	5200
BETHEL	32702	0002X	US 2/SR 5/26 NE/O IR 310 (SUNDAY RIVER)	C	ATR34304	.	5670	.	.	5010
BETHEL	32802	0002X	US 2 NE/O IR 721(FLAT RD)	C	III	.	.	.	.	3430
BETHEL	32807	0002X	US 2 W/O IR 721(FLAT RD)	C	III	.	3390	.	.	3250
BETHEL	54702	0002X	US 2 NE/O IR 3722 (MT VIEW CIR)	C	III	.	3860	.	.	3690
BETHEL	02104	0005X	SR 5/35(SONGO RD) SE/O SR5/35(LOVERS LN)	C	ATR34304	.	1790	.	.	1570
BETHEL	03304	0005X	SR 5/35 (LOVERS LN) SE/O US 2	C	ATR34304	.	1340	.	.	1260
BETHEL	56501	0005X	SR 5/35 N/O IR 726 (SKILLINGS RD)	C	ATR32601	.	1780	.	.	.
BETHEL	00502	0026X	SR 26 (MAIN ST) NE/O PARKWAY	C	II	.	6170	.	.	6330
BETHEL	00506	0026X	SR 26 (MAIN ST) SW/O PARKWAY	C	II	.	5540	.	.	5590
BETHEL	00607	0026X	SR 26 (RAILROAD ST) W/O MECHANIC ST	C	II	.	3160	.	.	2690
BETHEL	32708	00310	IR 310 (SUNDAY RIVER) NW/O US 2/SR 5/26	C	ATR34304	.	3470	.	.	2240
BETHEL	00303	00552	VERNON ST E/O MAIN ST	C	II	.	1270	.	.	1540
BETHEL	01904	00552	VERNON ST SE/O TYLER ST @ CUL	C	II	.	1030	.	.	1340
BETHEL	48906	00660	IR 660 (RABBIT RD) SW/O SR 26 @ BR# 0710	C	I	.	90	.	.	40
BETHEL	32607	00662	IR 662 (NORTH RD) W/O IR 1143	C	II	.	760	.	.	930
BETHEL	01504	00720	PARADISE ST SE/O BROAD ST	C	I	.	850	.	.	780
BETHEL	32805	00721	IR 721 (FLAT RD) S/O US 2	C	II	.	430	.	.	510
BETHEL	02107	00724	GROVER HILL RD W/O SR 5/35 (LOVERS LN)	C	II	.	170	.	.	230
BETHEL	00405	01750	MAIN ST S/O SR 26 (RAILROAD ST)	C	II	.	4480	.	.	.
BETHEL	01102	01750	MAIN ST NE/O CHURCH ST	C	I	.	3090	.	.	3070
BETHEL	01104	01773	BROAD ST SE/O MAIN ST	C	I	.	1790	.	.	1550
BETHEL	01108	03827	CHURCH ST NW/O MAIN ST	C	I	.	1140	.	.	1120
BETHEL	02103	03827	MILL HILL RD E/O SR 5/35 (SONGO RD)	C	II	.	790	.	.	.
BETHEL	03603	03837	PARKWAY E/O US 2/SR 5/26 (MAYVILLE RD)	C	ATR34304	.	5190	.	.	5850
BROWNFIELD	62204	0005X	SR 5/113 SE/O IR 687 (FARNSWORTH RD)	A	ATR62204	3900	3950	4050	4000	.
BROWNFIELD	46008	0005X	SR 5/113 NW/O IR 1906 (MISTY LN)	C	II	3950	.	.	.	.
BROWNFIELD	46204	0005X	SR 5/113 (PEQUAWKET) SE/O IR 1429 (PIG)	T	II	2640	.	.	3110	.
BROWNFIELD	46208	0005X	SR 5/113(PEQUAWKET) NW/O SR 160(DENMARK)	T	ATR62204	.	.	.	3670	.
BROWNFIELD	49500	00687	IR 687 (FARNSWORTH RD) @ BR# 0715	C	I	.	.	.	50	.
BROWNFIELD	46605	00703	IR 703(KENNARD HILL)S/O IR 810@PORTER TL	C	I	.	.	.	70	.
BROWNFIELD	30800	00704	IR 704 (CENTER CONWAY RD) @ NH SL	C	I	770	.	.	670	.
BROWNFIELD	46307	00704	IR 704 (MAIN ST WEST) W/O SR 160 (MAIN )	C	I	1410	.	.	1320	.
BROWNFIELD	31100	00808	IR 808 (HAMPSHIRE RD) @ NH SL	C	I	270	.	.	270	.

## 2006 Maine Transportation Count Book

Oxford

	TOWN	STATION	ROAD	LOCATION	TYPE	GROUP	AADT02	AADT03	AADT04	AADT05	AADT06
17	BROWNFIELD	46603	00810	IR 810 (PHEN HILL) E/O IR 703 @ BR# 0738	C	I	.	.	.	30	.
17	BROWNFIELD	46203	01334	IR 1334 (DEPOT) E/O SR 5/113 (PEQUAWKET)	T	I	.	.	.	200	.
17	BROWNFIELD	46205	01429	IR 1429 (PIG ST) S/O SR 5/113(PEQUAWKET)	T	II	.	.	.	870	.
17	BROWNFIELD	45902	0160X	SR 160 NE/O IR 1906 (MISTY LN)	C	II	1650	.	.	1680	.
17	BROWNFIELD	46201	0160X	SR 160 (DENMARK) N/O SR 5/113(PEQUAWKET)	T	II	.	.	.	1140	.
17	BROWNFIELD	46206	0160X	SR 160(MAIN ST) SW/O SR 5/113(PEQUAWKET)	T	II	1790	.	.	1570	.
17	BROWNFIELD	46404	0160X	SR 160 (BROWNFIELD RD) SE/O IR 2137	C	II	1010	.	.	1000	.
17	BROWNFIELD	53900	0160X	SR 160 @ DENMARK TL	C	II	1340	.	.	1420	.
17	BROWNFIELD	53807	01905	IR 1905(PORTLAND LN) W/O IR 2155@BR#2839	C	I	.	.	.	0	.
17	BUCKFIELD	61908	00577	IR 577 (TUCKER RD) NW/O IR 578	C	I	.	.	.	.	130
17	BUCKFIELD	61906	00578	IR 578(HAMMOND HILL) SW/O IR 577@BR#0790	C	I	.	.	.	.	0
17	BUCKFIELD	38908	00585	IR 585 (HIGH ST) NW/O IR 1024(FAUNCE RD)	C	I	.	1510	.	.	1460
17	BUCKFIELD	60704	00585	IR 585 (HIGH ST) SE/O IR 594(PARIS HILL)	C	I	.	1040	.	.	890
17	BUCKFIELD	60708	00585	IR 585 (HIGH ST) NW/O IR 594	C	I	.	580	.	.	490
17	BUCKFIELD	41603	00586	IR 586 (E BUCKFIELD) E/O SR 117 (TURNER)	C	I	.	680	.	.	1130
17	BUCKFIELD	61805	00592	IR 592(SHED HOLLOW RD) S/O IR578@BR#0703	C	I	.	.	.	.	80
17	BUCKFIELD	60705	00594	IR 594 (PARIS HILL) S/O IR 585 @BR# 5450	C	I	.	500	.	.	460
17	BUCKFIELD	61706	00595	IR 595(BROCK SCH RD) SW/O IR 578@BR#0698	C	I	.	.	.	.	180
17	BUCKFIELD	55202	00619	IR 619(BRYANT RD) NE/O SR 117(TURNER ST)	C	I	.	470	.	.	460
17	BUCKFIELD	39000	0117X	SR 117 (TURNER ST) @ TURNER TL	C	I	.	3130	.	.	2590
17	BUCKFIELD	39106	0117X	SR 117 (STREAKED MTN) SW/O IR 615(SODOM)	M	I	.	1530	.	.	1720
17	BUCKFIELD	55100	0117X	SR 117 (STREAKED MTN RD) @ PARIS TL	C	I	.	1660	.	.	1670
17	BUCKFIELD	60403	0117X	SR 117(DEPOT) E/O IR2236(JOHN ELLINGWOOD	C	I	.	2340	.	.	2170
17	BUCKFIELD	60603	0117X	SR 117(TURNER) E/O IR 612(E JCT)@BR#3287	C	I	.	3150	.	.	2890
17	BUCKFIELD	55206	0124X	SR 124(ROUND ABOUT RD) SW/O SR117@BR5451	C	I	.	920	.	.	820
17	BUCKFIELD	60805	0124X	SR 124 S/O IR 623 (S HILL RD)	C	I	.	1270	.	.	1160
17	BUCKFIELD	60302	0140X	SR 140 (MORRILL ST) NE/O IR 585(HIGH ST)	C	I	.	1830	.	.	1860
17	BUCKFIELD	60505	01927	IR 1927 (N HILL RD) S/O IR 612(CROSS RD)	C	I	.	1220	.	.	1370
17	BYRON	31201	0017X	SR 17 N/O IR 324 (GARLAND POND RD)	C	III	.	570	.	.	560
17	BYRON	31300	0017X	SR 17 (SWIFT RIVER RD) @ TOWNSHIP E TL	C	III	.	440	.	.	510
17	BYRON	63604	0017X	SR 17 (SWIFT RIVER) SE/O IR 320 (BYRON)	C	III	.	680	.	.	.
17	BYRON	63608	0017X	SR 17 (SWIFT RIVER) NW/O IR 320 (BYRON)	C	III	.	640	.	.	590
17	BYRON	66600	0017X	SR 17 (SWIFT RIVER RD) @ ROXBURY TL	C	III	.	780	.	.	730
17	BYRON	50507	00320	IR 320 (WELD RD) W/O IR 2769 @ BR# 0768	C	III	.	.	.	.	90

## 2006 Maine Transportation Count Book

Oxford

TOWN	STATION	ROAD	LOCATION	TYPE	GROUP	AADT02	AADT03	AADT04	AADT05	AADT06
17 BYRON	63602	00320	IR 320 (WELD RD) NE/O SR 17 @ BR# 2176	C	III	.	210	.	.	180
17 BYRON	49801	00321	IR 321 N/O IR 320 (WELD RD) @ BR# 0769	C	III	.	.	.	.	50
17 BYRON	48605	00323	IR 323 (ROXBURY PD) S/O IR 324 @BR# 0651	C	II	.	40	.	.	50
17 BYRON	31207	00324	IR 324 (GARLAND PD) W/O SR 17 (SWIFT RV)	C	II	.	110	.	.	110
17 BYRON	48601	00324	IR 324(GARLAND PD RD) N/O IR 323@BR#2281	C	II	.	.	.	60	50
17 BYRON	63900	00324	IR 324 @ BEAVER BROOK @ BR# 0652	C	II	.	10	.	.	.
17 BYRON	43807	01073	IR 1073 W/O SR 17 @ BR# 0795	C	III	.	.	.	.	50
17 CANTON	57408	00396	IR 396 (CANTON PT RD) NW/O SR 140	C	I	.	1450	.	.	1160
17 CANTON	35905	00559	IR 559 (STAPLES HILL) S/O SR 108(TURNER)	C	I	.	450	.	.	460
17 CANTON	52906	00559	IR 559 (CHURCH ST) SW/O IR 557 @HRTFD TL	M	I	.	.	270	.	.
17 CANTON	62403	01043	IR 1043 (CROSS ST) E/O SR 108 @ BR#0753	C	I	.	.	.	.	130
17 CANTON	35904	0108X	SR 108(TURNER) SE/O IR 559(STAPLES HILL)	C	I	.	4970	.	.	4500
17 CANTON	51605	0108X	SR 108(TURNER ST) S/O IR405(JEWETT HILL)	C	I	.	4620	.	.	4310
17 CANTON	57308	0108X	SR 108 (PLEASANT ST) NW/O IR 2506(RIVER)	C	I	.	4340	.	.	4480
17 CANTON	62408	0108X	SR 108 (PLEASANT ST) NW/O IR 1043(CROSS)	C	I	.	4980	.	.	4170
17 CANTON	35800	0140X	SR 140 @ JAY TL	C	I	.	2430	.	.	2250
17 CANTON	41100	0140X	SR 140 (MAIN ST) @ HARTFORD TL	C	I	.	800	.	.	1210
17 CANTON	57406	0140X	SR 140 SW/O IR 396 (CANTON PT RD)	C	I	.	1700	.	.	1800
17 CANTON	62307	0140X	SR 140 (MAIN ST) W/O SR 108 (TURNER ST)	C	I	.	1450	.	.	1580
17 CANTON	62502	0140X	SR 140(SCHOOL ST) NE/O IR 1043(CROSS ST)	C	I	.	.	.	.	1750
17 CANTON	52106	02305	IR 2305(FARRAND HILL RD) SW/O SR 108 @TL	M	I	.	.	30	.	.
17 DENMARK	35005	00805	IR 805 (HANCOCK PD RD) S/O IR 1840 @ TL	C	II	.	.	.	330	.
17 DENMARK	55705	00805	IR 805 (HANCOCK PD RD) S/O SR 117	C	II	.	.	.	320	.
17 DENMARK	55708	00805	IR 805 (HIO RIDGE RD) NW/O SR 117	C	III	.	.	.	500	.
17 DENMARK	55908	00805	IR 805 (MTN RD) NW/O IR 813 (HIO RDG RD)	C	III	.	.	.	380	.
17 DENMARK	45603	0117X	SR 117 E/O SR 160	C	II	1980	.	.	1720	.
17 DENMARK	45604	0117X	SR 117 SE/O SR 160	C	II	600	.	.	490	.
17 DENMARK	46905	0117X	SR 117 S/O IR 817 (TEACAP RD) @ HIRAM TL	C	II	340	.	.	280	.
17 DENMARK	55706	0117X	SR 117 SW/O IR 805 (HANCOCK PD RD)	C	II	1700	.	.	1430	.
17 DENMARK	45607	0160X	SR 160 W/O SR 117	C	II	.	.	.	1360	.
17 DIXFIELD	00207	0002X	US 2/SR 17 W/O HIGH ST	C	II	.	10620	.	.	.
17 DIXFIELD	00303	0002X	US 2/SR 17 (MAIN ST) E/O SR 142(WELD RD)	C	ATR36907	.	8420	.	.	.
17 DIXFIELD	00403	0002X	US 2/SR 17 (MAIN ST) E/O THIRD ST	C	ATR36907	.	7300	.	.	.
17 DIXFIELD	02903	0002X	US 2/SR 17 (MAIN ST) E/O HALL HILL RD	C	ATR36907	.	5950	.	.	5630

## 2006 Maine Transportation Count Book

Oxford

	TOWN	STATION	ROAD	LOCATION	TYPE	GROUP	AADT02	AADT03	AADT04	AADT05	AADT06
17	DIXFIELD	35401	0002X	US 2/SR 17 N/O IR 396 (CANTON-DIXFIELD)	S	ATR36907	.	3900	.	.	4030
17	DIXFIELD	35407	0002X	US 2/SR 17 W/O IR 396 (CANTON-DIXFIELD)	S	ATR36907	.	5970	.	.	5410
17	DIXFIELD	56908	0017X	SR 17 NW/O IR 385 (SEVERY HILL RD)	C	ATR36907	.	750	.	.	780
17	DIXFIELD	35403	00396	IR 396(CANTON-DIXFIELD RD)E/O US 2/SR 17	S	I	.	2020	.	.	1560
17	DIXFIELD	35504	00396	IR 396 (CANTON PT RD) SE/O IR 391	C	I	.	1630	.	.	1420
17	DIXFIELD	00301	0142X	SR 142(WELD RD) N/O US 2/SR 17 (MAIN ST)	C	I	.	5020	.	.	5380
17	DIXFIELD	03002	0142X	SR 142 (WELD ST) NE/O MIDDLE SCHOOL DR	C	II+III	.	2050	.	.	1810
17	DIXFIELD	56808	0142X	SR 142 NW/O IR 375 (AVERILL)	C	II+III	.	1450	.	.	1500
17	DIXFIELD	02902	01430	HALL HILL RD NE/O US 2/SR 17 (MAIN ST)	C	I	.	1180	.	.	.
17	DIXFIELD	00201	01583	HIGH ST N/O US 2/SR 17 (MAIN ST)	C	I	.	710	.	.	580
17	FRYEBURG	00202	0005X	SR5/US302 (MAIN) NE/O SR 5/113(PORTLAND)	S	ATR39808	10120	.	.	10220	.
17	FRYEBURG	00204	0005X	SR 5/113 (PORTLAND ST) SE/O US 302(MAIN)	S	ATR62204	5800	.	.	6200	.
17	FRYEBURG	01004	0005X	SR 5/113 (PORTLAND ST) SE/O OXFORD ST	C	ATR62204	.	.	.	5880	.
17	FRYEBURG	01702	0005X	SR 5 (MAIN ST) NE/O FAIRVIEW DR	C	II+III	.	.	.	4330	.
17	FRYEBURG	01802	0005X	SR 5 (MAIN ST) NE/O US 302 (BRIDGTON RD)	C	II+III	5620	.	.	5840	.
17	FRYEBURG	42801	0005X	SR 5 N/O IR 1915	C	II+III	2460	.	.	2170	.
17	FRYEBURG	42805	0005X	SR 5 S/O IR 1914	C	II+III	3530	.	.	3090	.
17	FRYEBURG	45301	0005X	SR 5/113 N/O IR 702 (LYMAN DR)	C	ATR62204	.	.	.	4790	.
17	FRYEBURG	45305	0005X	SR 5/113 S/O IR 702 (LYMAN DR)	C	ATR39808	3930	.	.	4690	.
17	FRYEBURG	64701	0005X	SR 5/113 N/O IR 2675(PUBLIC BOAT ACCESS)	C	ATR62204	4000	.	.	4800	.
17	FRYEBURG	42501	00665	IR 665(UNION HILL RD) N/O IR1318(HARBOR)	C	II	.	.	.	500	.
17	FRYEBURG	42503	00665	IR 665(HARBOR HILL RD) E/O IR 1318@#3694	C	II	.	.	.	730	.
17	FRYEBURG	42807	00671	IR 671 (FISH ST) W/O IR 1915	C	II	1110	.	.	1050	.
17	FRYEBURG	42403	00674	IR 674 (HARBOR RD) E/O SR 113	C	II	660	.	.	520	.
17	FRYEBURG	64303	00674	IR 674(OLD RIVER RD) E/O IR 1318 @ 0713	C	II	.	.	.	170	.
17	FRYEBURG	49905	00677	IR 677 (MCNEIL RD) S/O IR 665 @ BR#2708	C	II	.	.	.	310	.
17	FRYEBURG	34101	00681	IR 681(MENOTOMY RD)N/O US 302 (BRIDGTON)	C	II	280	.	.	280	.
17	FRYEBURG	34105	00681	IR 681(MENOTOMY RD) S/O US 302(BRIDGTON)	C	II	320	.	.	290	.
17	FRYEBURG	47105	00687	IR 687 (PORTER RD) S/O SR 5/113	C	I	480	.	.	390	.
17	FRYEBURG	30104	00697	IR 697 (STANLEY HILL RD) SE/O US 302	C	I	140	.	.	130	.
17	FRYEBURG	45307	00702	IR 702 (LYMAN DR) W/O SR 5/113	C	I	.	.	.	80	.
17	FRYEBURG	00206	0113X	SR113/US302(MAIN) SW/O SR5/113(PORTLAND)	S	ATR39808	13620	.	.	13290	.
17	FRYEBURG	02102	0113X	SR 113/US 302 (MAIN ST) NE/O DRIFT RD	T	II	.	.	.	12140	.
17	FRYEBURG	02302	0113X	SR 113/US 302(MAIN ST) NE/O SR113(RIVER)	C	II	12760	.	.	.	.

## 2006 Maine Transportation Count Book

Oxford

	TOWN	STATION	ROAD	LOCATION	TYPE	GROUP	AADT02	AADT03	AADT04	AADT05	AADT06
17	FRYEYBURG	02308	0113X	SR 113 (RIVER ST) NW/O US 302 (MAIN ST)	T	II	3290	.	.	2740	.
17	FRYEYBURG	03100	0113X	SR 113 (BRIDGE ST) @ NH SL	C	ATR39808	2930	.	.	2490	.
17	FRYEYBURG	42401	0113X	SR 113 N/O IR 672	C	II	1080	.	.	1010	.
17	FRYEYBURG	42405	0113X	SR 113 S/O IR 674 (HARBOR RD)	C	II	1380	.	.	1120	.
17	FRYEYBURG	50106	0113X	SR 113 SW/O IR 683 (LITTLE CHATHAM) @ BR	C	II	.	.	.	1230	.
17	FRYEYBURG	64301	01318	IR 1318 (HARBOR RD) N/O IR 674 @ BR#3695	C	II	530	.	.	490	.
17	FRYEYBURG	49707	01322	IR 1322 (WICKS RD) W/O IR 671 @ BR# 0778	C	II	.	.	.	10	.
17	FRYEYBURG	00308	01427	SMITH ST NW/O MAPLE ST	C	I	520	.	.	480	.
17	FRYEYBURG	00504	01427	SMITH ST SE/O OXFORD ST	C	I	410	.	.	.	.
17	FRYEYBURG	01504	01472	LOVEWELLS POND RD SE/O US 302 (BRIDGTON)	C	II	830	.	.	710	.
17	FRYEYBURG	00503	01764	OXFORD ST E/O SMITH ST	C	I	660	.	.	490	.
17	FRYEYBURG	01007	01764	OXFORD ST W/O SR 5/113 (PORTLAND)	C	I	480	.	.	.	.
17	FRYEYBURG	00902	01765	PINE ST NE/O SR 5/113 (PORTLAND)	C	I	2300	.	.	2480	.
17	FRYEYBURG	01506	01765	PINE ST SW/O US 302 (BRIDGTON RD)	C	I	1770	.	.	.	.
17	FRYEYBURG	00806	01766	WARREN ST SW/O SR 5/113 (PORTLAND ST)	C	I	930	.	.	920	.
17	FRYEYBURG	01904	01768	BRADLEY ST SE/O SR 5/US 302 (MAIN ST)	C	I	600	.	.	650	.
17	FRYEYBURG	02204	01785	ELM ST SE/O SR 113/US 302	C	I	620	.	.	.	.
17	FRYEYBURG	00103	01860	MAPLE ST E/O US 302 (MAIN ST)	C	I	430	.	.	450	.
17	FRYEYBURG	00302	01860	MAPLE ST NE/O ELM ST	C	I	160	.	.	.	.
17	FRYEYBURG	02908	01862	PLEASANT ST NW/O FAIR ST	C	I	210	.	.	180	.
17	FRYEYBURG	45104	02009	IR 2009 (DENMARK RD) SE/O US 302	S	I	380	.	.	300	.
17	FRYEYBURG	45108	02009	IR 2009 (HEMLOCK BRIDGE RD) NW/O US 302	S	III	270	.	.	.	.
17	FRYEYBURG	53107	02009	IR 2009 W/O IR1324 (PW) @ BR#1004	C	II	.	.	.	30	.
17	FRYEYBURG	56004	02021	IR 2021 (HALEY TOWN) SE/O US 302 (MAIN)	C	I	.	.	.	720	.
17	FRYEYBURG	64703	02675	IR 2675(PUBLIC BOAT ACCESS) E/O SR 5/113	C	II	.	.	.	70	.
17	FRYEYBURG	01503	0302X	US 302 (BRIDGTON RD) E/O LOVEWELLS RD	C	III	6320	.	.	.	.
17	FRYEYBURG	01804	0302X	US 302 (BRIDGTON RD) SE/O SR 5 (MAIN ST)	C	ATR39808	5800	.	.	6810	.
17	FRYEYBURG	02306	0302X	US 302 (MAIN ST) SW/O SR 113 (RIVER ST)	T	III	.	.	.	7980	.
17	FRYEYBURG	02505	0302X	US 302 (MAIN ST) 0.22 MI S/O MAPLE @ CUL	C	ATR39808	9090	.	.	10290	.
17	FRYEYBURG	45102	0302X	US 302 NE/O IR 2009 (HEMLOCK BRIDGE RD)	S	ATR39808	3600	.	.	3800	.
17	FRYEYBURG	45106	0302X	US 302 SW/O IR 2009 (HEMLOCK BRIDGE RD)	C	ATR39808	3830	.	.	3890	.
17	FRYEYBURG	56006	0302X	US 302(MAIN) SW/O IR 2021(HALEY TOWN)@SL	C	ATR39808	9130	.	.	10050	.
17	GILEAD	32902	0002X	US 2 NE/O SR 113	C	III	.	3350	.	.	.
17	GILEAD	33000	0002X	US 2 @ NH SL	C	III	.	3140	.	.	3100

## 2006 Maine Transportation Count Book

Oxford

	TOWN	STATION	ROAD	LOCATION	TYPE	GROUP	AADT02	AADT03	AADT04	AADT05	AADT06
17	GILEAD	56408	0002X	US 2 NW/O IR 1153 (BOG RD)	C	III	.	3410	.	.	3150
17	GILEAD	32904	0113X	SR 113 SE/O US 2	C	II	.	170	.	.	280
17	GRAFTON TWP	32000	0026X	SR 26 @ BR# 2212 @ MOTHER WALKER FALLS	C	ATR32208	.	790	.	.	880
17	GREENWOOD	32408	0026X	SR 26(MAIN ST) NW/O IR 356(E BETHEL) @TL	C	II	.	5020	.	.	5300
17	GREENWOOD	36807	0026X	SR 26 (MAIN ST) W/O IR 436 (GORE RD)	C	II	.	4860	.	.	4880
17	GREENWOOD	32401	00356	IR 356(E BETHEL RD) N/O SR26(MAIN ST)@TL	C	I	.	930	.	.	890
17	GREENWOOD	33305	0035X	IR 552(VERNON ST) S/O IR720(PARADISE RD)	C	II	.	550	.	.	850
17	GREENWOOD	36802	00436	IR 436 (GORE RD) NE/O SR 26 (MAIN ST)	C	II	.	450	.	.	450
17	GREENWOOD	63002	00437	IR 437(BIRD HILL RD) SW/O SR 26(MAIN ST)	M	I	.	.	.	.	240
17	GREENWOOD	36906	00451	IR 451(HOWE HILL) SW/O IR 455(GREENWOOD)	M	II	.	.	.	.	1030
17	GREENWOOD	36901	00455	IR 455(HOWE HILL RD) N/O IR 451 @BR#0679	C	II	.	1060	.	.	1130
17	GREENWOOD	37108	00455	IR 455(GREENWOOD) NW/O IR 478(PATCH MTN)	C	II	.	340	.	.	340
17	GREENWOOD	37205	00455	IR 455(GREENWOOD RD) S/O SR 219 @BR#5586	C	II	.	550	.	.	500
17	GREENWOOD	48105	00455	IR 455 (GREENWOOD RD) S/O IR 456	C	II	.	280	.	.	380
17	GREENWOOD	37308	00456	IR 456 NW/O SR 219	M	III	.	.	.	.	340
17	GREENWOOD	62704	00456	IR 456 (ROWE HILL RD) SE/O IR 1177	C	II	.	120	.	.	150
17	GREENWOOD	62800	00456	IR 456 (ROWE HILL RD) @ WOODSTOCK TL	M	II	.	.	.	.	300
17	GREENWOOD	54106	00464	IR 464 (RICHARDSON HOLLOW RD) SW/O IR467	C	II	.	180	.	.	160
17	GREENWOOD	62901	01129	IR 1129(JOHNYS BR RD) N/O SR 26@BR#5086	M	II	.	.	.	.	240
17	GREENWOOD	37203	0219X	SR 219 E/O IR 455 (GREENWOOD RD)	C	II	.	410	.	.	300
17	GREENWOOD	54102	0219X	SR 219 NE/O IR 464(YATES RD) @W PARIS TL	C	II	.	790	.	.	640
17	HANOVER	49107	0002X	US 2/SR 5 W/O IR 1907 (FERRY RD) (E JCT)	C	ATR32203	.	4600	.	.	4050
17	HANOVER	56608	01165	IR 1165 (HOWARD POND RD) NW/O IR 1166	C	II	.	260	.	.	320
17	HARTFORD	36106	00540	IR 540(STETSON) SW/O IR 553(DARRINGTON)	M	I	.	210	180	.	180
17	HARTFORD	36108	00553	IR 553 (DARRINGTON) NW/O IR 540(STETSON)	M	I	.	.	180	.	.
17	HARTFORD	52204	00555	IR 555 (CAMP RD) SE/O SR 140 (W JCT)	M	I	.	.	200	.	.
17	HARTFORD	38601	00559	IR 559 (CHURCH ST) N/O SR 219	M	I	.	.	260	.	.
17	HARTFORD	52700	00563	IR 563 (BERRY RD) @ TURNER TL	M	I	.	.	400	.	.
17	HARTFORD	52005	00565	IR 565 (TOWN FARM) S/O IR 540 (STETSON)	M	I	.	.	50	.	.
17	HARTFORD	57901	00565	IR 565 (TOWN FARM RD) N/O SR 140/219	M	I	.	.	160	.	.
17	HARTFORD	52508	00570	IR 570 (TUCKER RD) NW/O SR 140 (MAIN ST)	M	I	.	.	150	.	.
17	HARTFORD	38302	00584	IR 584 (RICKER HILL RD) NE/O SR 140	M	I	.	.	70	.	.
17	HARTFORD	51405	00590	IR 590 (PERRY RD) S/O SR 219(BEAR PD RD)	M	I	.	.	370	.	.
17	HARTFORD	51903	00590	IR 563 (MAHONEY RD) E/O IR 559 (CHURCH)	M	I	.	.	50	.	.

## 2006 Maine Transportation Count Book

Oxford

	TOWN	STATION	ROAD	LOCATION	TYPE	GROUP	AADT02	AADT03	AADT04	AADT05	AADT06
17	HARTFORD	58002	00995	IR 995 (PRATT HILL RD) NE/O SR 219	M	I	.	.	130	.	.
17	HARTFORD	36102	0140X	SR 140(MAIN) NE/O IR540(STETSON)@BR#3118	C	I	.	670	.	.	1000
17	HARTFORD	36105	0140X	SR 140 (MAIN ST) S/O IR 540 (STETSON RD)	C	I	.	520	.	.	1030
17	HARTFORD	38201	0140X	SR 140 (MAIN ST) N/O SR 219 (BEAR PD RD)	C	I	.	770	.	.	1040
17	HARTFORD	38206	0140X	SR 140/219(MAIN) SW/O IR1558(PW)WOOD ENT	C	I	.	1260	.	.	1540
17	HARTFORD	38305	0140X	SR 140(SUMMER RD) S/O IR584(RICKER HILL)	C	I	.	1190	.	.	1430
17	HARTFORD	38205	01461	IR 1461 (GURNEY HILL RD) S/O SR 219	M	I	.	.	60	.	.
17	HARTFORD	38203	0219X	SR 219(BEAR PD) E/O IR 1461(GURNEY HILL)	C	I+II	.	870	.	.	940
17	HARTFORD	38604	0219X	SR 219(BEAR PD RD) SE/O IR559(CHURCH ST)	C	I+II	.	940	.	.	990
17	HARTFORD	38700	0219X	SR 219 (BEAR POND RD) @ TURNER TL	C	I+II	.	1140	.	.	1350
17	HARTFORD	58004	0219X	SR 219 (BEAR PD) SE/O IR 995(PRATT HILL)	C	I+II	.	1030	.	.	1020
17	HARTFORD	52805	02283	IR 2283 (CAREY HILL RD) S/O IR 2531	M	I	.	.	80	.	.
17	HARTFORD	52305	02531	IR 2531(OLD RT 140) S/O SR 140/219(WJCT)	M	I	.	.	240	.	.
17	HEBRON	40302	00615	IR 615 (SODOM RD) NE/O IR 597 @ BR# 0707	C	I	.	80	.	.	100
17	HEBRON	40307	00618	IR 618 (STATION RD) W/O IR 615(SODOM RD)	C	I	.	480	.	.	620
17	HEBRON	40503	00618	IR 618(STATION RD) E/O IR 2236 @BR# 2800	C	I	.	660	.	.	720
17	HEBRON	40507	00618	IR 618(STATION RD) W/O IR2236(DEPOT CIR)	C	I	.	590	.	.	.
17	HEBRON	40608	00625	IR 625(GREENWOOD MT)NW/O SR 124@MINOT TL	C	I	.	230	.	.	250
17	HEBRON	61001	00627	IR 627 (STATION RD) N/O SR 119	C	I	.	720	.	.	850
17	HEBRON	40806	00635	IR 635(OXFORD RD) SW/O SR 119@BR#0709@TL	C	I	.	260	.	.	290
17	HEBRON	40700	0119X	SR 119 (WILLIAMS RD) @ MINOT TL	C	I	.	2610	.	.	2820
17	HEBRON	40803	0119X	SR 119 (PARIS RD) E/O IR 635 (OXFORD RD)	C	I	.	2830	.	.	3130
17	HEBRON	40807	0119X	SR 119 (PARIS RD) W/O IR 635 (OXFORD RD)	C	I	.	2660	.	.	2970
17	HEBRON	61004	0119X	SR 119(WILLIAMS RD) SE/O IR 627(STATION)	C	I	.	2640	.	.	3030
17	HEBRON	61008	0119X	SR 119(PARIS RD) NW/O IR 627(STATION RD)	C	I	.	2970	.	.	3350
17	HEBRON	40600	0124X	SR 124 @ MINOT TL	C	I	.	1200	.	.	1190
17	HEBRON	60906	0124X	SR 124 SW/O IR 1594 (ALLEN RD)	C	I	.	1320	.	.	1310
17	HIRAM	47003	0005X	SR 5/113/117 E/O SR 117	C	II	3170	.	.	3250	.
17	HIRAM	47008	0005X	SR 5/113 NW/O IR 2029 (MOUNTAIN RD)	C	II	2980	.	.	3050	.
17	HIRAM	46807	00818	IR 818 (NOTCH RD) W/O IR 2132	C	I	.	.	.	220	.
17	HIRAM	53208	00818	IR 818(TEN MILE BK ) NW/O IR 841@BR#0740	C	I	.	.	.	10	.
17	HIRAM	53206	00841	IR 841(NOTCH RD) SW/O IR818(TEN MILE BK)	C	I	.	.	.	210	.
17	HIRAM	34701	00849	IR 849 (DURGINTOWN) N/O IR 1341(S HIRAM)	C	I	410	.	.	460	.
17	HIRAM	47001	0117X	SR 117 N/O SR 5/113/117	C	II	1450	.	.	1350	.

## 2006 Maine Transportation Count Book

Oxford

	TOWN	STATION	ROAD	LOCATION	TYPE	GROUP	AADT02	AADT03	AADT04	AADT05	AADT06
17	HIRAM	00103	01341	SACOPEE RD E/O SR 160 (BROWNFIELD RD)	C	I	2710	.	.	2900	.
17	HIRAM	00101	0160X	SR 160 (BROWNFIELD RD) N/O SACOPEE RD	C	II	2120	.	.	2210	.
17	HIRAM	33806	0160X	SR 160 (BROWNFIELD RD) SW/O IR 838	C	II	1170	.	.	1040	.
17	HIRAM	47208	0160X	SR 160(BROWNFIELD) NW/O IR844(TRIPPTOWN)	C	II	1690	.	.	1470	.
17	LINCOLN PLT	30403	0016X	SR 16(WILSONS MILLS) E/O IR 1553@BR#3515	C	III	.	370	.	.	350
17	LINCOLN PLT	35300	0016X	SR 16 (WILSONS MILLS RD) @ MAGALLOWAY TL	C	III	.	440	.	.	430
17	LOVELL	43101	0005A	OLD STAGE RD N/O SR 5	C	II+III	.	250	.	280	.
17	LOVELL	41800	0005X	SR 5 @ STONEHAM TL	C	II+III	.	980	.	1020	.
17	LOVELL	41906	0005X	SR 5 SW/O IR 740 (SLAB CITY RD)	C	II+III	.	1310	.	.	.
17	LOVELL	42901	0005X	SR 5 N/O IR 753 (CHRISTIAN HILL RD)	C	III	.	2550	.	.	.
17	LOVELL	42906	0005X	SR 5 SW/O SR 93	C	II+III	.	2710	.	2600	.
17	LOVELL	43104	0005X	SR 5 SE/O IR 746 (OLD WATERFORD RD)	C	II+III	.	2600	.	2610	.
17	LOVELL	43108	0005X	SR 5(MAIN ST) NW/O OLD STAGE RD (S JCT)	C	II+III	.	2350	.	2330	.
17	LOVELL	43301	0005X	SR 5 N/O IR 1200 (PLEASANT POINT RD)	C	II+III	.	1930	.	1990	.
17	LOVELL	43505	0005X	SR 5 S/O IR 742 (SABATTUS RD)	C	II+III	.	1630	.	1720	.
17	LOVELL	50207	00665	IR 665(HARBOR HILL RD) W/O 751 @ BR#3582	C	II	.	.	.	680	.
17	LOVELL	42108	00675	IR 675(FOXBORO RD) NW/O IR 1190(W LOVELL	C	II	.	.	.	270	.
17	LOVELL	43204	00675	IR 675 (LOVELL) SE/O IR1198(HATCH HILL)	C	III	.	760	.	820	.
17	LOVELL	50301	00675	IR 675 (FOXBORO RD) N/O IR 676 (NEW RD)	C	II	.	.	.	100	.
17	LOVELL	50307	00676	IR 676 (NEW RD) W/O IR 675 (FOXBORO RD)	C	II	.	.	.	110	.
17	LOVELL	41902	00740	IR 740 (SLAB CITY RD) NE/O SR 5	C	III	.	230	.	.	.
17	LOVELL	43502	00742	IR 742 (SABATTUS RD) NE/O SR 5	C	III	.	210	.	210	.
17	LOVELL	43404	00744	IR 744 (EASTMAN HILL RD) SE/O SR 5	C	III	.	130	.	.	.
17	LOVELL	43102	00746	IR 746 (OLD WATERFORD RD) NE/O SR 5	C	III	.	240	.	210	.
17	LOVELL	43602	00746	IR 746 NE/O IR 744 (EASTMAN HILL RD)	C	III	.	120	.	.	.
17	LOVELL	43004	00793	IR 793 (KNIGHTS HILL RD) SE/O SR 93 @ TL	C	III	.	640	.	.	.
17	LOVELL	42903	0093X	SR 93 E/O SR 5 @ BR# 0787	C	III	.	1520	.	1520	.
17	LOVELL	43002	0093X	SR 93 NE/O IR 793 (KNIGHTS HILL RD) @ TL	C	III	.	680	.	600	.
17	LOVELL	42102	01190	IR 1190 (W LOVELL) NE/O IR 675 (FOXBORO)	C	III	.	200	.	110	.
17	LOWER CUPSUPTIC TWP	50700	0016X	SR 16 (WILSONS MILLS RD) @ BR# 3541	C	III	.	460	.	.	460
17	MAGALLOWAY PLT	30507	0016X	SR 16 (DAM RD) W/O IR 1105 @ NH SL	C	III	.	560	.	.	620
17	MEXICO	00100	0002X	US 2 (MAIN ST) @ RUMFORD TL	C	I	.	10740	.	.	11570
17	MEXICO	00604	0002X	US 2/SR 17 (MAIN ST) SE/O US 2 (MAIN ST)	C	I	.	10250	.	.	.
17	MEXICO	05004	0002X	US 2/SR 17 (MAIN ST) SE/O MITCHELL ST	C	I	.	10040	.	.	.

## 2006 Maine Transportation Count Book

Oxford

	TOWN	STATION	ROAD	LOCATION	TYPE	GROUP	AADT02	AADT03	AADT04	AADT05	AADT06
17	MEXICO	05304	0002X	US 2/SR 17(RIVER RD) SE/O SOUTH MAINE ST	S	I	.	9520	.	.	8340
17	MEXICO	06604	0002X	US 2/SR 17 (RIVER RD) SE/O WATER ST # 1	C	I	.	12680	.	.	12670
17	MEXICO	06704	0002X	US 2/SR 17 (RIVER RD) SE/O VETERANS ST	C	I	.	7275	.	.	.
17	MEXICO	06904	0002X	US 2/SR 17 (RIVER RD) SE/O HIGHLAND TERR	C	I	.	11490	.	.	.
17	MEXICO	06908	0002X	US 2/SR 17 (RIVER RD) NW/O HIGHLAND TERR	C	I	.	10870	.	.	.
17	MEXICO	20007	0002X	US 2/SR 17 W/O IR 378 (HAMMOND FERRY RD)	C	I	.	10820	.	.	9800
17	MEXICO	00601	0017X	SR 17 (ROXBURY) N/O US 2 (MAIN ST)	C	I	.	6670	.	.	5900
17	MEXICO	03108	0017X	SR 17 (ROXBURY RD) NW/O SUMMIT ST @ CUL	C	II	.	2960	.	.	2360
17	MEXICO	40002	0017X	SR 17(ROXBURY RD NE/O IR1066(BLACK BR RD	C	II	.	2160	.	.	2080
17	MEXICO	40006	0017X	SR17(ROXBURY RD) SW/O IR1066(BLACK BR RD	C	II	.	2420	.	.	.
17	MEXICO	04501	00373	BACK KINGDOM RD N/O HIGHLAND TER	C	I	.	250	.	.	560
17	MEXICO	20005	00378	IR 378 (HAMMOND FERRY RD) S/O SR 17/US 2	C	I	.	5860	.	.	5380
17	MEXICO	06802	01049	RICHARDS AVE NE/O US 2/SR 17 (RIVER RD)	C	I	.	250	.	.	300
17	MEXICO	00204	01050	HARLOW HILL RD SE/O SANDERS RD	C	I	.	.	.	.	3370
17	MEXICO	00903	01050	HARLOW HILL RD E/O SR 17 (ROXBURY RD)	C	I	.	2900	.	.	.
17	MEXICO	06901	01050	HIGHLAND TERR N/O SR 2/17 (RIVER RD)	C	I	.	1460	.	.	1410
17	MEXICO	40007	01066	IR 1066(BLACK BR RD) W/O SR 17 @BR# 3625	C	I	.	510	.	.	490
17	MEXICO	05408	02800	SOUTH MAINE ST NW/O OXFORD ST	C	I	.	560	.	.	630
17	MEXICO	06603	02803	WATER ST # 1 E/O US 2/SR 17 (RIVER RD)	C	I	.	560	.	.	.
17	MEXICO	05206	02807	HILL ST SW/O GRANITE ST	C	I	.	170	.	.	.
17	MEXICO	05003	02810	MITCHELL ST E/O US 2/SR 17 (MAIN ST)	C	I	.	1120	.	.	.
17	MEXICO	00202	02823	SANDERS RD NE/O HARLOW HILL RD	C	I	.	.	.	.	40
17	MEXICO	00308	02841	OSGOOD AVE NW/O US 2 (MAIN ST)	C	I	.	2010	.	.	1570
17	MEXICO	06706	02842	VETERANS ST SW/O US 2/SR 17 (RIVER RD)	S	I	.	7280	.	.	7630
17	NEWRY	32203	0002X	US 2/SR 5 E/O SR 26	A		3280	3280	3300	3240	3290
17	NEWRY	32205	0002X	US 2/SR 5/26 S/O SR 26 @ BR# 2055	C	ATR34304	.	5910	.	.	5900
17	NEWRY	32208	0026X	SR 26 NW/O US 2/SR 5	A		960	980	1020	990	1000
17	NEWRY	32108	0026X	SR 26 NW/O IR 1124 (BRANCH RD)	C	ATR32203	.	870	.	.	.
17	NEWRY	38004	00310	IR 310(SUNDAY RV RD) SE/O IR 314@BR#5690	C	ATR34304	.	3570	.	.	2340
17	NEWRY	38500	00310	IR 310 (SUNDAY RIVER RD) @ BR# 3167	C	ATR34304	.	270	.	.	290
17	NORWAY	00406	0026X	SR 26 (FAIR ST) SW/O SR 26/117(PARIS ST)	C	I	.	13380	.	.	12490
17	NORWAY	00505	0026X	SR 26 (FAIR) ST S/O GREEN ST	C	I	.	13220	.	.	12680
17	NORWAY	00705	0026X	SR 26(MAIN ST) S/O SR26(FAIR ST)@BR#2802	C	I	.	19620	.	.	18350
17	NORWAY	00808	0026X	SR 26 (MAIN ST) NW/O BARTLETT ST	C	I	.	17890	.	.	18040

## 2006 Maine Transportation Count Book

Oxford

TOWN	STATION	ROAD	LOCATION	TYPE	GROUP	AADT02	AADT03	AADT04	AADT05	AADT06
17 NORWAY	58908	00475	IR 475(GREENWOOD) NW/O SR 118(WATERFORD)	C	II	.	1660	.	.	1500
17 NORWAY	36804	00503	IR 503 (OLD STAGE) SE/O SR 117(HARRISON)	C	I	.	.	.	.	720
17 NORWAY	45803	00504	IR 504 (SODOM RD) E/O IR 2203 @ BR# 0685	C	III	.	200	.	.	190
17 NORWAY	47302	00504	IR 504(SODOM RD) NE/O IR503(COUNTRY CLUB	C	II	.	430	.	.	430
17 NORWAY	02701	00505	CROCKETT RIDGE RD N/O SR117/118(LAKE RD)	C	II	.	.	.	.	1140
17 NORWAY	39605	00505	IR 505 (CROCKETT RDG) S/O IR 479 (ROUND)	C	II	.	.	.	.	570
17 NORWAY	39804	00507	IR 507(KAHKONEN) SE/O IR 510(PIKES HILL)	C	I	.	.	.	.	1150
17 NORWAY	39808	00507	IR 507(ROBERTS RD) NW/O IR510(PIKES HILL	C	I	.	.	.	.	300
17 NORWAY	02105	00510	PIKES HILL ST S/O SR 117/118(MAIN ST)@BR	C	I	.	1250	.	.	760
17 NORWAY	02606	00510	PIKES HILL RD SW/O ORCHARD ST @ CUL	C	I	.	930	.	.	430
17 NORWAY	39806	00510	IR 510(PIKES HILL) SW/O IR 507(KAHKONEN)	C	I	.	.	.	.	960
17 NORWAY	00101	00535	ALPINE ST N/O GARY ST	C	I	.	2420	.	.	2080
17 NORWAY	00401	00535	ALPINE ST N/O SR 26/117 (MAIN ST)	C	I	.	.	.	.	2990
17 NORWAY	53504	00643	IR 643 (GORE) SE/O SR 117 @ OTISFIELD TL	C	I	.	970	.	.	1000
17 NORWAY	01802	00900	COTTAGE ST NE/O PEARL ST	C	I	.	.	.	.	1770
17 NORWAY	00407	0117X	SR 117 (PARIS ST) W/O SR 26 (FAIR ST)	C	I	.	.	.	.	8380
17 NORWAY	01003	0117X	SR 117 (PARIS ST) E/O MAIN ST	C	I	.	.	.	.	7040
17 NORWAY	01008	0117X	SR117/118 (MAIN ST) NW/O SR117(PARIS ST)	C	I	.	13350	.	.	11610
17 NORWAY	01704	0117X	SR 117/118 (MAIN ST) SE/O COTTAGE ST	C	I	.	.	.	.	11620
17 NORWAY	01708	0117X	SR 117/118 (MAIN ST) NW/O COTTAGE ST	C	I	.	.	.	.	11700
17 NORWAY	02107	0117X	SR 117/118 (MAIN ST) W/O PIKES HILL ST	C	I	.	.	.	.	10440
17 NORWAY	02406	0117X	SR 117/118 (LAKE RD) SW/O WATER ST	C	II	.	.	.	.	9310
17 NORWAY	02707	0117X	SR 117/118 (LAKE RD) W/O CROCKETT RIDGE	C	II	.	.	.	.	8350
17 NORWAY	36806	0117X	SR 117 (HARRISON) SW/O IR 503(OLD STAGE)	C	II	.	.	.	.	3400
17 NORWAY	39703	0117X	SR 117/118(LAKE RD) E/O SR 117(HARRISON)	C	II	.	.	.	.	8350
17 NORWAY	39705	0117X	SR 117(HARRISON RD) S/O SR118(WATERFORD)	C	II	.	3230	.	.	3500
17 NORWAY	35208	0118X	SR 118(WATERFORD RD) NW/O IR 512(ASHTON)	C	II	.	5560	.	.	4920
17 NORWAY	39707	0118X	SR 118(WATERFORD) W/O SR117(HARRISON)@BR	C	II	.	.	.	.	5630
17 NORWAY	58600	0118X	SR 118 (WATERFORD RD) @ WATERFORD TL	C	II	.	3000	.	.	2800
17 NORWAY	58904	0118X	SR 118(WATERFORD) SE/O IR 475(GREENWOOD)	C	II	.	5330	.	.	4620
17 NORWAY	58907	0118X	SR 118 (WATERFORD) W/O IR 475(GREENWOOD)	C	II	.	3680	.	.	3290
17 NORWAY	02208	01609	PLEASANT ST NW/O SR 117/118 (MAIN ST)	C	I	.	900	.	.	1030
17 NORWAY	02801	01609	PLEASANT ST N/O HAYDEN AVE	C	I	.	950	.	.	1060
17 NORWAY	03406	01617	LYNN ST SW/O MILL ST @ BR# 0797	C	I	.	.	.	.	830

## 2006 Maine Transportation Count Book

Oxford

	TOWN	STATION	ROAD	LOCATION	TYPE	GROUP	AADT02	AADT03	AADT04	AADT05	AADT06
17	NORWAY	00708	01622	MAIN ST NW/O SR 26 (FAIR ST)	C	I	.	6570	.	.	6100
17	NORWAY	01004	01622	MAIN ST SE/O SR 117 (PARIS ST)	C	I	.	.	.	.	6080
17	NORWAY	01108	01624	WINTER ST NW/O SR 117 (PARIS ST)	C	I	.	1470	.	.	940
17	NORWAY	03908	01624	WINTER ST NW/O SR 26 (FAIR ST)	C	I	.	1930	.	.	1660
17	NORWAY	00508	01625	GREEN ST NW/O SR 26 (FAIR ST)	C	I	.	600	.	.	640
17	NORWAY	01504	01626	BEAL ST SE/O MARSTON ST	C	I	.	.	.	.	3140
17	NORWAY	01804	01626	BEAL ST SE/O COTTAGE ST	C	I	.	.	.	.	2090
17	NORWAY	03407	01626	BEAL ST W/O LYNN ST @ BR# 0796	C	I	.	.	.	.	2500
17	NORWAY	00806	01630	BARTLETT ST SW/O SR 26 (MAIN ST)	C	I	.	610	.	.	590
17	NORWAY	01808	01672	PEARL ST NW/O COTTAGE ST	C	I	.	.	.	.	1060
17	NORWAY	02101	01743	WHITMAN ST N/O SR 117/118 (MAIN ST)	C	I	.	760	.	.	.
17	NORWAY	04107	02622	TOWN & COUNTRY DR W/O SR 26 (MAIN ST)	C	I	.	670	.	.	620
17	OTISFIELD	53604	00643	IR 643(GORE RD) SE/O IR3622(HIDDEN LAKE)	C	I	.	950	.	950	.
17	OTISFIELD	53608	00643	IR 643(GORE RD) NW/O IR3622(HIDDEN LAKE)	C	I	.	1100	.	1120	.
17	OTISFIELD	50000	0121X	SR 121 @ OXFORD TL	C	II	.	1910	.	1520	.
17	OTISFIELD	54502	0121X	SR 121 NE/O IR 3628 (RAYVILLE RD)	C	II	.	1550	.	1380	.
17	OTISFIELD	54506	0121X	SR 121 SW/O IR 3628 (RAYVILLE RD)	C	I	.	.	.	1250	.
17	OTISFIELD	54908	0121X	SR 121 NW/O IR 3617 (POWHATTAN RD)	C	II	.	1470	.	1280	.
17	OTISFIELD	55002	0121X	SR 121 NE/O IR 3616 (BOLSTERS MILL RD)	C	II	.	1280	.	1060	.
17	OTISFIELD	55004	0121X	SR 121 SE/O IR 3631 (OAK HILL RD)	C	III	.	1280	.	.	.
17	OTISFIELD	54206	03616	IR 3616 (BIG HILL RD) SW/O IR 3633	C	I	.	670	.	.	.
17	OTISFIELD	55008	03616	IR 3616 (BOLSTERS MILL RD) NW/O SR 121	C	I	.	880	.	840	.
17	OTISFIELD	54904	03617	IR 3617 (POWHATTAN RD) SE/O SR 121	C	III	.	.	.	510	.
17	OTISFIELD	58108	03617	IR 3617 (POWHATTAN) NW/O IR 3628 (COON)	C	III	.	420	.	.	.
17	OTISFIELD	53606	03622	IR 3622(HIDDEN LAKE RD) SW/O IR643(GORE)	C	I	.	350	.	370	.
17	OTISFIELD	54508	03628	IR 3628 (RAYVILLE RD) NW/O SR 121	C	I	.	.	.	240	.
17	OXFORD	41204	0026X	SR 26/121 (MAIN ST) SE/O SR 121 (N JCT)	A		11510	11990	11720	12290	12730
17	OXFORD	41004	0026X	SR 26 SE/O IR 629 (OXFORD ST)	C	I	.	17270	.	.	16850
17	OXFORD	41008	0026X	SR 26 NW/O IR 629 (OXFORD ST)	C	I	.	.	.	.	15940
17	OXFORD	41208	0026X	SR 26 NW/O SR 121 (N JCT)	T	I	.	11320	.	.	.
17	OXFORD	41404	0026X	SR 26 SE/O SR 121 @ BR# 2921 (S JCT)	C	I	.	6760	.	.	.
17	OXFORD	47704	0026X	SR 26 SE/O Z0045 (HANNAFORD ENT)	C	I	.	.	.	.	16740
17	OXFORD	47708	0026X	SR 26 NW/O HANNAFORD ENT	C	I	.	.	.	.	17980
17	OXFORD	52404	0026X	SR 26 (MAIN ST) SE/O IR 656(NUMBER 6 RD)	T	I	.	.	.	10030	.

## 2006 Maine Transportation Count Book

Oxford

	TOWN	STATION	ROAD	LOCATION	TYPE	GROUP	AADT02	AADT03	AADT04	AADT05	AADT06
17	OXFORD	52408	0026X	SR 26 (MAIN ST) NW/O IR 656(NUMBER 6 RD)	T	I	.	.	.	10600	.
17	OXFORD	62108	0026X	SR 26 NW/O IR 869 (FORE ST)	C	I	.	.	.	.	14210
17	OXFORD	51304	00507	IR 507(WEBBER BK RD) SE/O IR 642(POTTLE)	C	I	.	.	.	.	1030
17	OXFORD	51308	00507	IR 507(WEBBER BK RD) NW/O IR 642(POTTLE)	C	I	.	.	.	.	1390
17	OXFORD	59808	00507	IR 507(WEBBER BK) NW/O IR645(ALLEN HILL)	C	I	.	.	.	.	370
17	OXFORD	41002	00629	IR 629 (OXFORD ST) NE/O SR 26	C	I	.	2480	.	.	2250
17	OXFORD	48702	00635	IR 635(HEBRON)NE/O IR 647(SAM ROWE HILL)	C	I	.	480	.	.	.
17	OXFORD	48706	00635	IR 635 (HEBRON) SW/O IR 647 (E OXFORD)	C	I	.	610	.	.	.
17	OXFORD	44902	00642	IR 642(POTTLE) NE/O IR645(COLD WATER BK)	C	I	.	4760	.	.	4110
17	OXFORD	44906	00642	IR 642(POTTLE) SW/O IR645(COLD WATER BK)	C	I	.	.	.	.	2410
17	OXFORD	51302	00642	IR 642(POTTLE RD) NE/O IR507(WEBBER BK)	C	I	.	.	.	.	2120
17	OXFORD	53307	00643	IR 643 (GORE RD) W/O SR 121	C	I	.	1110	.	.	.
17	OXFORD	44901	00645	IR 645(COLD WATER BK) N/O IR 642(POTTLE)	C	I	.	110	.	.	.
17	OXFORD	44905	00645	IR 645(COLD WATER BK) S/O IR 642(POTTLE)	C	I	.	2290	.	.	1810
17	OXFORD	59805	00645	IR 645(ALLEN HILL) S/O IR 507(WEBBER BK)	C	I	.	.	.	.	1430
17	OXFORD	48704	00647	IR 647(SAM ROWE HILL)SE/O IR 635(HEBRON)	C	I	.	230	.	.	.
17	OXFORD	48708	00647	IR 647 (E OXFORD) NW/O IR 635(HERBON)	C	I	.	420	.	.	.
17	OXFORD	48808	00647	IR 647 (E OXFORD) NW/O IR 656 (NO 6)	C	I	.	500	.	.	.
17	OXFORD	62105	00649	IR 649 (SKEETFIELD RD) S/O SR 26	C	I	.	.	.	.	2590
17	OXFORD	41507	00654	IR 654 (RABBIT VALLEY RD) W/O SR 26	C	III	.	570	.	.	.
17	OXFORD	58304	00654	IR 654 (RABBIT VALLEY) SE/O IR 657(KING)	C	II	.	710	.	.	.
17	OXFORD	48806	00656	IR 656 (NO 6) SW/O IR 647 (E OXFORD)	C	I	.	150	.	.	.
17	OXFORD	52401	00656	IR 656 (NUMBER 6 RD) N/O SR 26 (MAIN ST)	T	I	.	.	.	300	.
17	OXFORD	58205	00657	IR 657 (KING ST) S/O SR 121 @ BR# 5552	C	II	.	2560	.	1980	.
17	OXFORD	58305	00657	IR 657(KING ST) S/O IR654(RABBIT VALLEY)	C	II	.	.	.	1180	.
17	OXFORD	58308	00657	IR 657 (KING) NW/O IR 654(RABBIT VALLEY)	C	I	.	1370	.	.	.
17	OXFORD	61604	00657	IR 657 (KING ST) SE/O IR 890 (KOHUT) @TL	C	II	.	810	.	770	.
17	OXFORD	52406	00893	IR 893 (ROLLER RINK RD) SW/O SR 26(MAIN)	T	I	.	.	.	980	.
17	OXFORD	41207	0121X	SR 121 W/O SR 26 (MAIN ST) (N JCT)	A		2770	2770	2780	2890	2990
17	OXFORD	41403	0121X	SR 121 E/O IR 635 @ BR# 2037	C	I+II	.	6300	.	.	.
17	OXFORD	58202	0121X	SR 121 NE/O IR 657 (KING ST) @ BR# 3738	C	II	.	5540	.	4990	.
17	OXFORD	58207	0121X	SR 121 W/O IR 657 (KING ST)	C	II	.	4040	.	3930	.
17	OXFORD	41308	01447	IR 1447 NW/O SR 121	C	I	.	1250	.	.	.
17	OXFORD	41202	01473	IR 1473 (STATION RD) NE/O SR 26	C	I	.	1180	.	1080	.

## 2006 Maine Transportation Count Book

Oxford

TOWN	STATION	ROAD	LOCATION	TYPE	GROUP	AADT02	AADT03	AADT04	AADT05	AADT06
17	PARIS	00403	00026X SR 26/117 (PARIS ST) E/O ALPINE ST	C	I	.	19560	.	.	17690
17	PARIS	00206	0026X SR 26/117 (MAIN ST) SW/O GARY ST	C	I	.	18050	.	.	17860
17	PARIS	01301	0026X SR 26 N/O PORTER @LITTLE ANDROSCOGGIN RV	C	I+II	.	7680	.	.	7400
17	PARIS	01508	0026X SR 26 (PARK ST) NW/O MAPLE ST	C	I	.	13930	.	.	12240
17	PARIS	01606	0026X SR 26/117 (MAIN ST) SW/O CHURCH ST	C	I	.	15910	.	.	14570
17	PARIS	03305	0026X SR 26/117 (MAIN ST) S/O PINE ST	C	I	.	18030	.	.	17410
17	PARIS	39405	0026X SR 26 S/O IR 913 (PARIS HILL RD)@BR#2745	C	II	.	6370	.	.	6250
17	PARIS	60208	0026X SR 26 NW/O IR 526(JACKSON XING RD) @ TL	C	II	.	6270	.	.	6080
17	PARIS	01108	00523 HIGH ST NW/O PROSPECT AVE	C	I	.	.	.	.	2540
17	PARIS	01201	00523 HIGH ST N/O NICHOL ST	C	I	.	2600	.	.	.
17	PARIS	01408	00523 HIGH ST NW/O SR 26 (PARK ST)	C	I	.	2410	.	.	2590
17	PARIS	40104	00523 IR 523(HIGH ST) SE/O IR 536(HATHAWAY RD)	C	I	.	.	.	.	2000
17	PARIS	60201	00529 IR 529(STEARNS HILL) N/O SR26@W PARIS TL	C	I	.	320	.	.	260
17	PARIS	03508	00535 ELM HILL ST NW/O COTTAGE ST	C	I	.	1850	.	.	1780
17	PARIS	03601	00535 ELM HILL ST N/O NICHOL ST	C	I	.	1280	.	.	1200
17	PARIS	01207	00538 NICHOL ST W/O HIGH ST @ RR CROSSING	C	I	.	1570	.	.	1610
17	PARIS	03604	00538 NICHOL ST SE/O ELM HILL ST	C	I	.	870	.	.	810
17	PARIS	61402	00594 IR 594 (MT MICA RD) NE/O IR 599	C	I	.	600	.	.	420
17	PARIS	61403	00599 IR 599 (CHRISTIAN RIDGE RD) E/O IR 594	C	I	.	220	.	.	.
17	PARIS	01804	00629 OXFORD ST SE/O SR 117/119 (MAIN ST)	C	I	.	2460	.	.	2230
17	PARIS	02505	00647 E OXFORD RD S/O SR 119 (HEBRON RD)	C	I	.	920	.	.	800
17	PARIS	02208	00861 HILL RD NW/O CROSS ST	C	I	.	930	.	.	940
17	PARIS	03505	00900 COTTAGE ST S/O ELM HILL ST	C	I	.	1090	.	.	1000
17	PARIS	02002	0117X SR 117(BUCKFIELD RD)NE/O SR 119(HEBRON)	C	I	.	3430	.	.	3780
17	PARIS	02403	0117X SR 117 (BUCKFIELD RD) E/O EMERY AVE	C	I	.	2790	.	.	.
17	PARIS	03704	0117X SR 117/119 (MAIN ST) SE/O BARROWS ST@ BR	C	I	.	8290	.	.	7970
17	PARIS	40206	0117X SR 117 SW/O IR 599(CHRISTIAN RDG RD)WJCT	C	I	.	1550	.	.	1910
17	PARIS	61202	0117X SR 117 NE/O IR 601(HOOPER LEDGE RD)	C	I	.	2240	.	.	2170
17	PARIS	02003	0119X SR 119(HEBRON RD)E/O SR 117(BUCKFIELD)	C	I	.	4410	.	.	4110
17	PARIS	02504	0119X SR 119 (HEBRON RD) SE/O E OXFORD RD	C	I	.	.	.	.	3270
17	PARIS	02801	01636 CHARLES ST N/O SR 26/117 (MAIN ST)	C	I	.	430	.	.	540
17	PARIS	00103	01637 GARY ST E/O ALPINE ST	C	I	.	1050	.	.	690
17	PARIS	01302	01871 PARIS HILL RD NE/O SR 26(PARK ST)@BR2645	C	I	.	2650	.	.	2480
17	PARIS	02301	01871 PARIS HILL RD N/O HILL ST	C	I	.	2470	.	.	2400

# 2006 Maine Transportation Count Book

County

Oxford

TOWN	STATION	ROAD	LOCATION	TYPE	GROUP	AADT02	AADT03	AADT04	AADT05	AADT06
17 PERU	00403	00415	PLEASANT ST E/O DICKVALE RD	C	I	.	270	.	.	.
17 PERU	00806	00416	MAIN ST SW/O VETERANS RD	C	I	.	2330	.	.	2330
17 PERU	00504	00417	RIDGE RD SE/O DICKVALE RD @ BR# 5432	C	I	.	860	.	.	910
17 PERU	35606	00543	IR 543 (GREEN WOODS RD) SW/O SR 108	C	II	.	1180	.	.	1140
17 PERU	57107	00543	IR 543 (WORTHLEY POND RD) W/O IR 1037	C	III	.	670	.	.	.
17 PERU	00204	0108X	SR 108 (CANTON RD) SE/O MAIN ST	C	I	.	5840	.	.	5680
17 PERU	00708	0108X	SR 108 (RUMFORD RD) NW/O VETERANS RD	C	I	.	3140	.	.	3460
17 PERU	58502	02506	IR 2506 (RIVER RD) NE/O SR 108 @ BR#2640	C	I	.	.	.	.	90
17 PORTER	00607	0025X	SR 25/160(OSSIPEE TR) W/O SR 160(SCHOOL)	C	II	4120	.	.	4060	.
17 PORTER	47603	0025X	SR 25/160 E/O IR 829 (FIRST COUNTY RD)	C	II	.	.	.	3040	.
17 PORTER	47806	0025X	SR 25 (OSSIPEE TR) SW/O IR 705(BICKFORD)	C	II+III	2560	.	.	.	.
17 PORTER	47900	0025X	SR 25 @ NH SL	C	II+III	2500	.	.	2640	.
17 PORTER	53701	00685	IR 685 (COLCORD PD RD) N/O IR 829	C	I	.	.	.	380	.
17 PORTER	34807	00705	IR 705(BICKFORD) W/O IR 822(DANAWEEK)@SL	C	I	90	.	.	50	.
17 PORTER	47808	00705	IR 705 (BICKFORD POND RD) NW/O SR 25	C	I	290	.	.	280	.
17 PORTER	47408	00814	IR 814 (PORTERFIELD RD) NW/O SR 160	C	I	.	.	.	430	.
17 PORTER	49407	00814	IR 814 (ROUNDS RD) W/O IR 2131 @ BR	C	I	.	.	.	70	.
17 PORTER	46702	00818	IR 818 (TEN MILE BK RD) NE/O SR 160	C	I	.	.	.	20	.
17 PORTER	46706	00818	IR 818 (SARA BRIDGE RD) SW/O SR 160	C	I	.	.	.	30	.
17 PORTER	49302	00823	IR 823 (DAM RD) NE/O IR 705 @ BR# 0741	C	I	.	.	.	70	.
17 PORTER	47601	00829	IR 829 (FIRST COUNTY RD) N/O SR 25/160	C	I	300	.	.	270	.
17 PORTER	47501	00830	IR 830 (SPEC PD RD) N/O IR 833	C	I	.	.	.	220	.
17 PORTER	01607	00832	CHAPEL ST W/O SCHOOL ST	C	I	.	.	.	150	.
17 PORTER	00408	00833	SCHOOL ST NW/O SR 160 (MAIN)	C	I	1250	.	.	1230	.
17 PORTER	01708	00833	SCHOOL ST NW/O ENFIELD ST	C	I	610	.	.	610	.
17 PORTER	00901	01343	PINE ST N/O SR 160 (MAIN)	C	I	510	.	.	370	.
17 PORTER	01406	01344	MOUNTAIN VIEW AVE SW/O ENFIELD ST	C	I	.	.	.	130	.
17 PORTER	00201	01347	BRIDGE ST N/O RIVER ST	C	I	.	.	.	3050	.
17 PORTER	00508	01347	HIGH ST NW/O SR 160 (MAIN ST)	C	I	.	.	.	270	.
17 PORTER	00202	01348	RIVER ST NE/O BRIDGE ST	C	I	240	.	.	240	.
17 PORTER	00102	01384	SUMMER ST NE/O SCHOOL ST	C	I	.	.	.	190	.
17 PORTER	00308	0160X	SR 160 (SCHOOL ST) NW/O BRIDGE ST	C	I	.	.	.	1100	.
17 PORTER	00402	0160X	SR 160 (MAIN ST) NE/O SCHOOL ST	C	I	620	.	.	540	.
17 PORTER	00502	0160X	SR 160 (MAIN ST) NE/O BRIDGE ST	C	I	2870	.	.	2880	.

## 2006 Maine Transportation Count Book

Oxford

TOWN	STATION	ROAD	LOCATION	TYPE	GROUP	AADT02	AADT03	AADT04	AADT05	AADT06
17 PORTER	00903	0160X	SR 160 (MAIN ST) E/O PINE ST	C	I	3160	.	.	3380	.
17 PORTER	46701	0160X	SR 160 N/O IR 818 (TEN MILE BK RD)	C	II	.	.	.	890	.
17 PORTER	49401	02131	IR 2131(PORTERFIELD) N/O IR 814 @BR#1368	C	I	.	.	.	30	.
17 ROXBURY	31501	0017X	SR 17(ROXBURY) N/O IR1068(FRYE CROSSOVER	C	III	.	1080	.	.	980
17 ROXBURY	31505	0017X	SR 17(ROXBURY) S/O IR1068(FRYE CROSSOVER	C	II	.	1840	.	.	1610
17 ROXBURY	63700	0017X	SR 17 @ WALKER BROOK BR# 3205	C	III	.	930	.	.	840
17 ROXBURY	31702	00323	IR 323 (MAIN) NE/O SR 120(ROXBURY NOTCH)	C	II	.	620	.	.	750
17 ROXBURY	31602	01068	IR 1068(FRYE CROSSOVER) NE/O SR120@B2300	C	II	.	730	.	.	700
17 ROXBURY	31604	0120X	SR 120 SE/O IR 1068 (FRYE CROSSOVER RD)	C	I	.	.	.	.	560
17 ROXBURY	31608	0120X	SR 120 NW/O IR 1068 (FRYE CROSSOVER RD)	C	I	.	1120	.	.	1050
17 ROXBURY	31704	0120X	SR 120 (ROXBURY NOTCH) SE/O IR 323(MAIN)	C	I	.	960	.	.	980
17 ROXBURY	31706	0120X	SR 120 (ROXBURY NOTCH) SW/O IR 323(MAIN)	C	I	.	690	.	.	650
17 ROXBURY	48405	01783	IR 1783 (HORSESHOE VALLEY RD) S/O SR 120	C	I	.	110	.	.	90
17 RUMFORD	00101	0002X	US 2 (HANCOCK ST) N/O RUMFORD AVE	C	I	.	6620	.	.	.
17 RUMFORD	00106	0002X	US 2 (RUMFORD AVE) SW/O US 2 (HANCOCK)	C	I	.	10120	.	.	10060
17 RUMFORD	01403	0002X	US 2 (LINCOLN AVE) E/O WALDO ST	C	I	.	10580	.	.	10000
17 RUMFORD	01505	0002X	US 2 (HANCOCK ST) S/O LINCOLN AVE	C	I	.	6880	.	.	6330
17 RUMFORD	02601	0002X	US 2 (RUMFORD AVE) N/O WASHINGTON ST #2	C	I	.	5840	.	.	5190
17 RUMFORD	03008	0002X	US 2 (FRANKLIN ST) NW/O BRIDGE ST	C	I	.	6810	.	.	6440
17 RUMFORD	03102	0002X	US 2 (BRIDGE ST) NE/O PROSPECT AVE	C	I	.	12530	.	.	.
17 RUMFORD	03105	0002X	US 2 (PROSPECT AVE) S/O US 2 (BRIDGE)	C	I	.	12920	.	.	11420
17 RUMFORD	07305	0002X	US 2 S/O S RUMFORD RD	C	I	.	8570	.	.	.
17 RUMFORD	09402	0002X	US 2 NE/O PROSPECT AVE	C	II	.	7760	.	.	7550
17 RUMFORD	34203	0002X	US 2 E/O SR 5 @ BR# 2514	C	III	.	3990	.	.	3540
17 RUMFORD	34206	0002X	US 2/SR 5 SW/O SR 5	C	ATR32203	.	4680	.	.	3990
17 RUMFORD	34301	0002X	US 2 N/O SR 232	C	III	.	4100	.	.	3740
17 RUMFORD	34503	0002X	US 2 E/O IR 1080 (ANDOVER RD)	C	III	.	5410	.	.	4560
17 RUMFORD	34506	0002X	US 2 SW/O IR 1080 (ANDOVER RD) @BR# 5679	C	III	.	4890	.	.	3640
17 RUMFORD	33904	0005X	SR 5 SE/O IR 1080 (ANDOVER RD)	C	II+III	.	730	.	.	680
17 RUMFORD	33907	0005X	SR 5 W/O IR 1080 (ANDOVER RD)	C	II+III	.	910	.	.	820
17 RUMFORD	34201	0005X	SR 5 N/O US 2	C	II+III	.	790	.	.	670
17 RUMFORD	34001	00343	IR 343(E ANDOVER RD) N/O IR1080(ANDOVER)	C	I	.	.	.	.	360
17 RUMFORD	58408	00356	IR 356 (E BETHEL RD) NW/O SR 232	C	I	.	.	.	.	530
17 RUMFORD	35105	00366	IR 366 (WYMAN HILL RD) S/O IR 1098	C	I	.	950	.	.	860

## 2006 Maine Transportation Count Book

Oxford

	TOWN	STATION	ROAD	LOCATION	TYPE	GROUP	AADT02	AADT03	AADT04	AADT05	AADT06
17	RUMFORD	36403	00432	IR 432 (MILTON RD) E/O IR 363 @ BR# 6109	C	I	.	410	.	.	360
17	RUMFORD	34004	01080	IR 1080 (ANDOVER) SE/O IR 343(E ANDOVER)	C	II	.	640	.	.	550
17	RUMFORD	34508	01080	IR 1080 (ANDOVER RD) NW/O US 2	C	II	.	950	.	.	810
17	RUMFORD	00207	0108X	SR 108 (CANTON RD) W/O SMITHVILLE RD	C	I	.	3010	.	.	3440
17	RUMFORD	03002	0108X	SR 108 (BRIDGE ST) NE/O US 2 (FRANKLIN)	C	I	.	7620	.	.	.
17	RUMFORD	10102	0108X	SR 108 (BRIDGE ST) NE/O CANAL ST	C	I	.	6640	.	.	7140
17	RUMFORD	10404	0108X	SR 108 SE/O INDUSTRIAL PK RD@POLE# J72/2	C	I	.	2770	.	.	2840
17	RUMFORD	01501	0120X	SR 120 (HANCOCK ST) N/O US 2 (LINCOLN)	C	I	.	.	.	.	3090
17	RUMFORD	07000	0120X	SR 120 (HANCOCK ST) @CUL @RICHARDSON BK	C	I	.	1830	.	.	1390
17	RUMFORD	34306	0232X	SR 232 SW/O US 2	C	I	.	1720	.	.	.
17	RUMFORD	36505	0232X	SR 232 S/O IR 2600 (S RUMFORD RD)	C	I	.	1410	.	.	1240
17	RUMFORD	58404	0232X	SR 232 SE/O IR 356 (E BETHEL RD)	C	I	.	.	.	.	1080
17	RUMFORD	36407	02600	IR 2600 (S RUMFORD RD) W/O IR 432	C	I	.	710	.	.	640
17	RUMFORD	36408	02600	IR 2600 (S RUMFORD) NW/O IR 432@BR# 2010	C	I	.	690	.	.	.
17	RUMFORD	80002	02600	IR 2600 (S RUMFORD RD) NE/O IR 364	C	I	.	1110	.	.	960
17	RUMFORD	80107	02600	IR 2600 (S RUMFORD) W/O IR 370 @BR# 3056	C	I	.	740	.	.	690
17	RUMFORD	10001	10008	CONGRESS ST (ONE WAY SB) N/O SR 108 (BR)	C	I	.	2380	.	.	2620
17	RUMFORD	05106	10014	ESSEX AVE #1 SW/O FRANKLIN AVE	C	I	.	290	.	.	.
17	RUMFORD	01304	10016	FALMOUTH ST SE/O US 2 (LINCOLN AVE)	C	I	.	3100	.	.	2740
17	RUMFORD	02708	10018	FRANKLIN ST NW/O US 2 (RUMFORD AVE)	C	I	.	1530	.	.	1520
17	RUMFORD	05104	10018	FRANKLIN ST SE/O ESSEX AVE #1	C	I	.	1960	.	.	1980
17	RUMFORD	07407	10019	FREE ST W/O PROSPECT AVE	C	I	.	.	.	.	720
17	RUMFORD	00407	10033	LINCOLN AVE W/O SOMERSET AVE #1	C	I	.	.	.	.	4010
17	RUMFORD	05302	10033	LINCOLN AVE NE/O KNOX ST #2	C	I	.	1340	.	.	1310
17	RUMFORD	05507	10033	LINCOLN AVE W/O PENOBSCOT ST	C	I	.	2940	.	.	3240
17	RUMFORD	00307	10038	MAINE AVE W/O US 2 (HANCOCK ST)	C	I	.	1430	.	.	1340
17	RUMFORD	03402	10038	MAINE AVE NE/O SPRUCE ST	C	I	.	1480	.	.	1450
17	RUMFORD	02308	10043	PENOBSCOT ST NW/O PLYMOUTH AVE	C	I	.	660	.	.	590
17	RUMFORD	05501	10043	PENOBSCOT ST N/O LINCOLN AVE	C	I	.	320	.	.	300
17	RUMFORD	05505	10043	PENOBSCOT ST S/O LINCOLN AVE	C	I	.	760	.	.	600
17	RUMFORD	02306	10046	PLYMOUTH AVE SW/O PENOBSCOT ST	C	I	.	1450	.	.	1550
17	RUMFORD	02103	10049	PORTLAND ST E/O PLYMOUTH AVE @ BR# 2990	C	I	.	5690	.	.	5120
17	RUMFORD	03108	10050	PROSPECT AVE NW/O US 2 (BRIDGE)	C	I	.	2570	.	.	2960
17	RUMFORD	07405	10050	PROSPECT AVE S/O FREE ST	C	I	.	2310	.	.	2200

## 2006 Maine Transportation Count Book

Oxford

TOWN	STATION	ROAD	LOCATION	TYPE	GROUP	AADT02	AADT03	AADT04	AADT05	AADT06
17 RUMFORD	09102	10050	PROSPECT AVE NE/O SUNNYSIDE TERRACE	C	I	.	660	.	.	.
17 RUMFORD	09206	10050	PROSPECT AVE SW/O EASTON HILL RD	C	I	.	510	.	.	.
17 RUMFORD	09908	10054	RIVER ST (ONE WAY NB) NW/O SR 108 (BR)	C	I	.	920	.	.	990
17 RUMFORD	00102	10055	RUMFORD AVE NE/O US 2 (HANCOCK ST)	C	I	.	3540	.	.	4350
17 RUMFORD	00401	10058	SOMERSET AVE #1 N/O LINCOLN AVE	C	I	.	.	.	.	820
17 RUMFORD	07203	10059	S RUMFORD RD E/O US 2 @BR	C	I	.	2250	.	.	2180
17 RUMFORD	03408	10061	SPRUCE ST NW/O MAINE AVE @ BR	C	I	.	1970	.	.	.
17 RUMFORD	01802	10087	VETERANS ST NE/O RAILROAD ST #1	C	I	.	7070	.	.	7570
17 RUMFORD	10505	10093	WYMAN HILL RD S/O S RUMFORD RD	C	I	.	1370	.	.	1160
17 STONEHAM	45006	00740	IR 740 (SLAB CITY) SW/O SR 5 @ BR# 5096	C	III	.	230	.	.	.
17 STOW	42307	00427	IR 427 (CHATHAM RD) W/O SR 113 @ BR#3751	C	II	.	320	.	360	.
17 STOW	49601	00665	IR 665(UNION HILL RD) N/O IR 668(MEADOW)	C	II	.	.	.	200	.
17 STOW	42303	00668	IR 668 (MEADOW RD) E/O SR 113	C	II	.	220	.	240	.
17 STOW	42200	0113X	SR 113 @ NH SL (S JCT)	C	II	.	.	.	390	.
17 STOW	42305	0113X	SR 113 S/O IR 668 (MEADOW RD) @ BR# 3581	C	II	.	950	.	870	.
17 STOW	50400	01288	IR 1288 (DEER HILL RD) @ BR# 0189	C	II	.	.	.	130	.
17 SUMNER	51108	00443	IR 443 (GREENWOODS RD) NW/O IR 540	C	II	.	450	.	.	740
17 SUMNER	36203	00540	IR 540 (FIELDS HILL) E/O IR 543 (VALLEY)	C	II	.	160	.	.	.
17 SUMNER	38401	00540	IR 540(GAMMON RD) N/O IR 2281@BR#0690@TL	C	II	.	240	.	.	.
17 SUMNER	51104	00540	IR 540 (LABRADOR RD) SE/O IR 443	C	I	.	220	.	.	190
17 SUMNER	36201	00543	IR 543 (VALLEY) N/O IR 540 (FIELDS HILL)	C	II	.	100	.	.	.
17 SUMNER	36204	00543	IR 543 (VALLEY) SE/O IR 540(FIELDS HILL)	C	I	.	140	.	.	160
17 SUMNER	51001	00998	IR 998 (GREENWOODS RD) N/O SR 219 (MAIN)	C	II	.	410	.	.	720
17 SUMNER	38103	0140X	SR 140/219(MAIN ST) E/O SR140@BR#5408@TL	C	I	.	.	.	.	1580
17 SUMNER	38105	0140X	SR 140 S/O SR 219 (MAIN ST)	C	I	.	1100	.	.	1180
17 SUMNER	37804	0219X	SR 219 (MAIN ST) SE/O IR 539(HEATH HILL)	C	I	.	1170	.	.	1770
17 SUMNER	38107	0219X	SR 219 (MAIN ST) W/O SR 140	C	I	.	.	.	.	1670
17 SUMNER	51005	0219X	SR 219(MAIN ST) S/O IR998(GREENWOODS RD)	C	I	.	.	.	.	1750
17 SUMNER	51503	0219X	SR 219 E/O IR 2501 (UPR SUMMER HILL RD)	C	I	.	.	.	.	1430
17 SUMNER	38405	02281	IR 2281 (GAMMON) S/O IR 540(FIELDS HILL)	C	I	.	190	.	.	200
17 SWEDEN	56106	00756	IR 756(WATERFORD RD) SW/O IR 785@BR#6104	C	III	.	.	.	270	.
17 SWEDEN	44704	0093X	SR 93 SE/O IR 756 (WATERFORD RD)	C	III	.	290	.	270	.
17 SWEDEN	44707	0093X	SR 93 W/O IR 783 (PLUMMER SCHOOL RD)	C	III	.	650	.	550	.
17 UPTON	30608	0026X	SR 26 NW/O IR 307 (MILL RD)	C	ATR32208	.	950	.	.	970

## 2006 Maine Transportation Count Book

Oxford

	TOWN	STATION	ROAD	LOCATION	TYPE	GROUP	AADT02	AADT03	AADT04	AADT05	AADT06
17	UPTON	30704	0026X	SR 26 SE/O IR 1431 (BACK ST)	C	ATR32208	.	670	.	.	660
17	WATERFORD	43704	0035X	SR 35(VALLEY RD) SE/O IR746(FIVE KEZARS)	C	ATR32601	.	1280	.	1090	.
17	WATERFORD	44105	0035X	SR 35 (VALLEY RD) S/O SR 118 (NORWAY RD)	C	ATR32601	.	1700	.	1300	.
17	WATERFORD	44108	0035X	SR 35 NW/O IR 2026	C	ATR32601	.	1980	.	.	.
17	WATERFORD	44308	0035X	SR 35 (VALLEY RD) NW/O SR 37 @ BR# 0780	C	ATR32601	.	1260	.	1140	.
17	WATERFORD	44501	0035X	SR 35/37 N/O SR 35(WATERBORO RD)	C	ATR32601	.	2000	.	1610	.
17	WATERFORD	48306	0035X	SR 35/37 SW/O IR 755 (PLUMMER HILL)	C	ATR32601	.	2140	.	1760	.
17	WATERFORD	44205	0037X	SR 37 (WATERFORD RD) S/O SR 118(NORWAY)	C	II	.	1530	.	1550	.
17	WATERFORD	44505	0037X	SR 37 (N BRIDGTON RD) S/O IR 959 (PW)	C	III	.	800	.	850	.
17	WATERFORD	48004	00504	IR 504 (MILL HILL RD) SE/O SR 35/37	C	III	.	430	.	.	.
17	WATERFORD	43901	00723	IR 723 (HUNTS CORNER RD) N/O SR 118	C	II	.	1000	.	950	.
17	WATERFORD	58507	00736	IR 736 (BISBEE TOWN) W/O IR 723 @BR#0726	C	II	.	.	.	480	.
17	WATERFORD	43706	00746	IR 746(FIVE KEZARS RD) SW/O IR775(GREEN)	C	III	.	400	.	290	.
17	WATERFORD	44406	00756	IR 756 (SWEDEN RD) SW/O IR 960(CROSS RD)	C	III	.	530	.	630	.
17	WATERFORD	44004	00976	IR 976 (BISBEE TOWN) SE/O IR 2026(SAWIN)	C	II	.	380	.	.	.
17	WATERFORD	58407	00976	IR 976 (FISKE RD) W/O IR 723 @ BR# 0748	C	II	.	.	.	60	.
17	WATERFORD	44104	0118X	SR 118 (NORWAY RD) SE/O SR 35(VALLEY RD)	C	II	.	990	.	1030	1080
17	WATERFORD	44203	0118X	SR 118 (NORWAY RD) E/O SR 37 (WATERFORD)	C	II	.	3100	.	3000	.
17	WATERFORD	44208	0118X	SR 118(NORWAY RD) NW/O SR 37(WATERFORD)	C	II	.	2240	.	2160	2040
17	WATERFORD	48308	0755	IR 755(PLUMMER HILL)NW/O SR 35/37(W JCT)	C	I	.	190	.	.	.
17	WEST PARIS	37601	0026X	SR 26 N/O SR 219 & ANDREWS BK DR@BR#2015	C	II	.	5830	.	.	5650
17	WEST PARIS	37604	0026X	SR 26 SE/O SR 219 (S JCT)	C	II	.	6400	.	.	6850
17	WEST PARIS	37508	00523	IR 523 (HIGH ST) NW/O IR 1663 (MINE RD)	C	I	.	1170	.	.	1110
17	WEST PARIS	41702	00528	IR 528 (MCKEEN ST) NE/O SR 26	C	II	.	80	.	.	.
17	WEST PARIS	42703	00544	IR 544 (BENSON HILL RD) E/O IR 1442	C	I	.	280	.	.	170
17	WEST PARIS	60104	00569	IR 569 (MORSE HILL RD) SE/O IR 1442	C	I	.	110	.	.	.
17	WEST PARIS	44603	00572	IR 572 (FORBS RD) E/O IR 573(ELLINGWOOD)	C	I	.	140	.	.	130
17	WEST PARIS	44607	00572	IR 572 (TUELLTOWN RD) W/O IR 573	C	I	.	220	.	.	180
17	WEST PARIS	44605	00573	IR 573 (ELLINGWOOD RD) S/O IR 572(FORBS)	C	I	.	250	.	.	260
17	WEST PARIS	37407	00902	IR 902 (GREENWOOD ST) W/O IR 523 (HIGH)	C	I	.	410	.	.	320
17	WEST PARIS	59905	00902	IR 902 (GREENWOOD) S/O SR 219 @ BR# 5091	C	I	.	980	.	.	980
17	WEST PARIS	42005	00916	IR 916 (TUELLTOWN RD) S/O IR 544	C	I	.	180	.	.	.
17	WEST PARIS	37704	01442	IR 1442(MORSE HILL) SE/O SR 219 @BR#6326	C	I	.	.	.	.	520
17	WEST PARIS	37708	01442	IR 1442(ABBOTT HILL) NW/O SR219(N PARIS)	C	I	.	.	.	.	190

## 2006 Maine Transportation Count Book

Oxford

	TOWN	STATION	ROAD	LOCATION	TYPE	GROUP	AADT02	AADT03	AADT04	AADT05	AADT06
17	WEST PARIS	37603	0219X	SR 219 (N PARIS RD) E/O SR 26	C	I	.	2180	.	.	2900
17	WEST PARIS	37606	0219X	SR 219 SW/O SR 26 @ BR# 3575	C	II	.	2590	.	.	.
17	WEST PARIS	59901	0219X	SR 219 N/O IR 902 (GREENWOOD) @ RR XING	C	I	.	2280	.	.	.
17	WEST PARIS	59907	0219X	SR 219 W/O IR 902 (GREENWOOD)@BR#3460	C	II	.	.	.	.	580
17	WEST PARIS	60002	0219X	SR 219 NE/O IR 513 (TUELLETTOWN RD)	C	I	.	1250	.	.	2070
17	WEST PARIS	60006	0219X	SR 219 SW/O IR 513 (LITTLEHOLE RD)	C	I	.	1180	.	.	2140
17	WOODSTOCK	36704	0026X	SR 26 (S MAIN ST) SE/O SR 232	C	II	.	4920	.	.	5050
17	WOODSTOCK	36707	0026X	SR 26 (S MAIN ST) W/O IR 2013	C	II	.	3870	.	.	.
17	WOODSTOCK	59308	0026X	SR 26 (N MAIN ST) NW/O IR 1133(LAKESIDE)	C	II	.	4260	.	.	4620
17	WOODSTOCK	59407	0026X	SR 26 (N MAIN ST) W/O IR 1136 (LAKE RD)	C	II	.	4560	.	.	4670
17	WOODSTOCK	59701	0026X	SR 26 N/O IR 460 (ANDREWS RD)	C	II	.	4920	.	.	5080
17	WOODSTOCK	66704	0026X	SR 26 SE/O IR 442 (CUSHMAN RD)	C	II	.	5020	.	.	5020
17	WOODSTOCK	36301	00416	IR 416(CONCORD PD RD) N/O IR 432@BR#0666	C	I	.	.	.	.	50
17	WOODSTOCK	36304	00432	IR 432 (SHAGG POND RD) SE/O IR 416	C	I	.	.	.	.	40
17	WOODSTOCK	36306	00432	IR 432 (CONCORD POND RD) SW/O IR 416	C	I	.	.	.	.	70
17	WOODSTOCK	66703	00442	IR 442 (CUSHMAN RD) E/O SR 26	C	I	.	150	.	.	190
17	WOODSTOCK	66500	00456	IR 456 @BR# 5677 (1.5 MI NW/O SR 219)	C	III	.	340	.	.	.
17	WOODSTOCK	59702	00460	IR 460 (ANDREWS RD) NE/O SR 26	C	I	.	550	.	.	560
17	WOODSTOCK	36601	0232X	SR 232 N/O IR 436 (GORE RD) @ BR# 3604	C	I	.	1500	.	.	1430
17	WOODSTOCK	36604	0232X	SR 232 SE/O IR 436 (GORE RD)	C	I	.	1550	.	.	1500
17	WOODSTOCK	36708	0232X	SR 232 NW/O IR 2013	C	I	.	1330	.	.	1210