

Traffic Volume Counts 2006 Annual Report



MaineDOT

**Data collected and published by the
State of Maine**

**Department of Transportation
Traffic Engineering Division**

**In cooperation with the
United States Department of Transportation
Federal Highway Administration**

TABLE of CONTENTS

Forward

Continuous Count Program

24 Hour Traffic Data Collection Program

Description of Headings, Symbols, and Abbreviations

Map of State Count Zones

Graph of 2006 Weekly Group Mean Factors

List of 2006 Weekly Group Mean Factors

List of 2006 Weekly Group Mean Factors as a Percent of AADT

Traffic Volume Counts by County, Town, and Route

FOREWORD

The Department of Transportation, Traffic Engineering Division, and Traffic Monitoring Section is responsible for the collection of all types of traffic data and maintenance of a statewide traffic volume database. The reduction and reporting of traffic volumes and vehicle classification data are accomplished through two types of count programs. They are as follows:

CONTINUOUS COUNT PROGRAM

Traffic volumes are monitored on a continuous year round basis at forty-three permanent recorder sites located on major highways throughout the State. These hourly counts are collected to produce an average weekday figure, a weekly average day, a monthly average day, and a monthly average weekday. This information is compiled to develop an Annual Average Daily Traffic (AADT) figure for each location. The AADT is computed from the average of the weekly average day totals for the year.

The increasing demand to determine the types of vehicles (e.g. passenger cars, single-unit trucks, and semi's) traveling Maine's highways has prompted the development of a Continuous Classification Program. Currently, the department has eleven locations along routed highways that collect data based on thirteen categories as defined by the Federal Highway Administration. An AADT is computed based on the total volume as well as summary data for individual vehicle types. Future plans include the installation of additional sites statewide over the next several years.

24 HOUR TRAFFIC DATA COLLECTION PROGRAM

Between April 1st and November 15th of each year, 24 hour traffic counts (i.e., coverage counts) are gathered to monitor traffic flow and changes in traffic patterns. These counts are generally taken at intersections with major routes and/or other significant roads, Compact Urban Lines (CUL), or Town Lines (TL), or in coordination with ongoing projects or special traffic studies for the Department.

Additionally, 24-hour vehicle classification counts are performed in conjunction with the coverage counts to provide a comprehensive view of traffic along the routed highways.

The State is divided into three count zones:

ZONE I : Southwestern Maine to western Penobscot Bay region. This zone includes all of York, Cumberland, Sagadahoc, Lincoln, Knox, and Waldo counties, Oxford county from Albany Twp/Waterboro West & Oxford, Otisfield, as well as Poland, and Mechanic Falls in Androscoggin county.

ZONE II : Western/Central Maine and eastern Penobscot Bay region. This zone includes all of Androscoggin except Poland, and Mechanic Falls, Franklin, Kennebec counties, the remainder of Oxford county, Somerset county from Bingham south plus between Flagstaff Lake area and Kennebec River, southern Penobscot county, and western Hancock county.

ZONE III : Northern and eastern Maine. This zone includes all of Aroostook, Piscataquis, Washington counties, northern and southeastern Hancock county, Penobscot county from Lagrange north, and the remainder of Somerset county.

These zones are counted on a five year cycle: Zones I and II are counted twice and Zone III once during each five year period. The coverage count program also consists of the “Special Counts” taken each year to satisfy Departmental needs, local requests, and Federal requirements. These include the annual collection of data for the State’s four urbanized areas (BACTS, KACTS, ATRC, and PACTS), Interstate System counts, and data collected from the various traffic studies conducted throughout the year. The 2006 Program included 4361 counts accomplished.

Once the AADT’s have been computed for all of the permanent recorder locations, weekly factors for each station are computed by dividing the AADT by each average weekly figure. Those stations which exhibit similar traffic patterns are assembled and placed into one of three groups:

URBAN : Roadways which carry commuter traffic and exhibit little seasonal change in traffic volumes.

ARTERIAL : Roadways which carry commuter traffic but exhibit moderate seasonal changes in traffic volumes.

RECREATIONAL : Roadways which are heavily influenced by seasonal traffic.

Within each of the three groups, a factor for each week is computed by averaging the weekly factors from each station within the group.

The 2006 Weekly Group Mean Factors were developed by averaging the Weekly Group Mean Factor for 2003, 2004 and 2005. The following pages show the graph of the 2006 Weekly Group Mean Factors, a list of these factors, and the 2006 Weekly Group Mean Factor as a percent of the AADT.

The 24-hour raw data may now be grouped and assigned a factor to produce an AADT. Growth factors for expanding traffic in uncounted zones are developed utilizing data from the permanent recorders and comparing it to the data from the previous year.

The updated AADT's are entered into the Maine Department of Transportation's database to be used by various Departmental employees.

DESCRIPTION of HEADINGS, SYMBOLS, AND ABBREVIATIONS

The following is a description of the column headings, symbols, and abbreviations used for the Coverage Count Section.

TOWN The town in which a count was taken

ROUTE The road or highway on which the count was taken.

Non-Interstate Highways and Roads

---- X indicates a Routed Highway

0196X = SR 196 0001X = US Route 1

---- A or --- B indicates an Alternate Routed Highway

0001A = US Route 1A 0009B = SR 9B

---- C indicates a Business Route

0001C = Business US Route 1, 1A, or 1B

0025C = Business SR 25

Just a number with no letter OR no numbers or letters indicates a non-routed highway

= Pine Hill Road 00001 = Hubbard Road

01414 = IR 1414 00991 = IR 991 (Biddeford Road)

Interstate System

---- X indicates Northbound or Eastbound

0095X = I-95 Northbound

0395X = I-395 Eastbound

---- S indicates Southbound

0095S = I-95 Southbound

---- W indicates Westbound

0395W = I-395 Westbound

LOCATION

A description of where the count was taken.

APP = Approach

ART = Arterial

AVE = Avenue

BK = Brook

BLVD = Boulevard

BR = Bridge

CIR = Circle

CL = County Line

CNR = Corner

CONN = Connector

CTR = Center

CUL = Compact Urban Line

CWY = Cause way

CV = Cove

DR = Drive

EB = Eastbound

ENT = Entrance

FL=Fall

FLS=Falls

FT = Fort

HTS = Heights

HWY = Highway

INT'L = International

IR = Inventory Road

LG = Long

LK = Lake

LN = Lane

LWR = Lower

MEM = Memorial

MT = Mount

MTN = Mountain

NB = Northbound

NH = New Hampshire

OW = One Way

PD = Pond

PK = Park

PKWY = Park Way

PL = Place

PT = Point

PW = Private Way

PZ = Plaza

RD = Road

RDG = Ridge

RMP = Ramp

RR = Railroad

RV = River

SB = Southbound

SL = State Line

SQ = Square

SR = State Route

ST = Street

STA = Station

STR = Stream

TER = Terrace

TL = Town Line

TPK = Turnpike

TR = Trail

UPR = Upper

US = United States Route

WB = Westbound

N/O, NE/O, E/O, etc. = North of, Northeast of, East of, etc.

TYPE

Category for each count taken.

- A Permanent Recorder Count
- B BACTS Count
- C Coverage Count
- I Interstate Count
- K KACTS Count
- L ATRC Count (Formerly LACTS)
- M Municipal, Town, Regional Count
- P PACTS Count
- S Special Count
- T Turning Movement Count
- Z Speed Count

GROUP

The factor group assigned to the location.

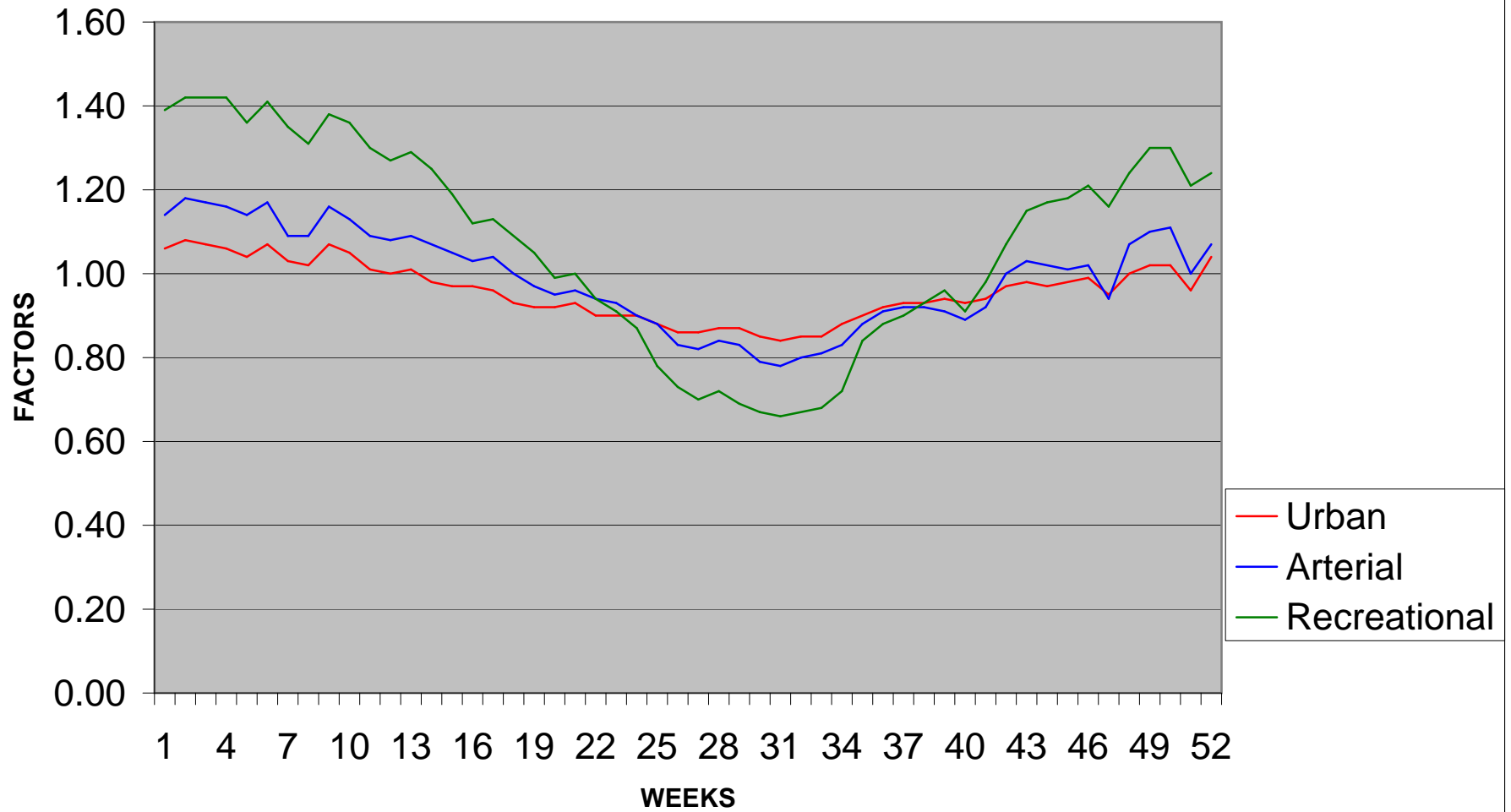
- I Urban Group II Arterial Group
- III Recreational Group ATR Permanent Recorder Controlled Group

AADT

Annual Average Daily Traffic

2006 WEEKLY GROUP FACTORS

AVERAGE: 2003, 2004, 2005



2006
WEEKLY GROUP MEAN FACTORS
AVERAGE: 2003, 2004, 2005

			Month	Urban	Arterial	recreation	Group	Group	Group	Year
Month	Start Date	Dates	Week #	Group I	Group II	Group III	I + II	II + III	I + III	Week #
Jan/Feb	(1)	2,3,4,5,6	1	1.06	1.14	1.39	1.10	1.27	1.23	1
	(8)	9,10,11,1	2	1.08	1.18	1.42	1.13	1.30	1.25	2
	(15)	16,17,18	3	1.07	1.17	1.42	1.12	1.30	1.25	3
	(22)	23,24,25	4	1.06	1.16	1.42	1.11	1.29	1.24	4
	(29)	30,31,1,2	5	1.04	1.14	1.36	1.09	1.25	1.20	5
Feb/Mar	(5)	6,7,8,9,1	1	1.07	1.17	1.41	1.12	1.29	1.24	6
	(12)	13,14,15	2	1.03	1.09	1.35	1.06	1.22	1.19	7
	(19)	20,21,22	3	1.02	1.09	1.31	1.06	1.20	1.17	8
	(26)	27,28,1,2	4	1.07	1.16	1.38	1.12	1.27	1.23	9
March	(5)	6,7,8,9,1	1	1.05	1.13	1.36	1.09	1.25	1.21	10
	(12)	13,14,15	2	1.01	1.09	1.30	1.05	1.20	1.16	11
	(19)	20,21,22	3	1.00	1.08	1.27	1.04	1.18	1.14	12
	(26)	27,28,29	4	1.01	1.09	1.29	1.05	1.19	1.15	13
April/May	(2)	3,4,5,6,7	1	0.98	1.07	1.25	1.03	1.16	1.12	14
	(9)	10,11,12	2	0.97	1.05	1.19	1.01	1.12	1.08	15
	(16)	17,18,19	3	0.97	1.03	1.12	1.00	1.08	1.05	16
	(23)	24,25,26	4	0.96	1.04	1.13	1.00	1.09	1.05	17
	(30)	1,2,3,4,5	5	0.93	1.00	1.09	0.97	1.05	1.01	18
May/Jun	(7)	8,9,10,11	1	0.92	0.97	1.05	0.95	1.01	0.99	19
	(14)	15,16,17	2	0.92	0.95	0.99	0.94	0.97	0.96	20
	(21)	22,23,24	3	0.93	0.96	1.00	0.95	0.98	0.97	21
	(28)	29,30,31	4	0.90	0.94	0.94	0.92	0.94	0.92	22
June	(4)	5,6,7,8,9	1	0.90	0.93	0.91	0.92	0.92	0.91	23

	(11)	12,13,14	2	0.90	0.90	0.87	0.90	0.89	0.89	24
	(18)	19,20,21	3	0.88	0.88	0.78	0.88	0.83	0.83	25
	(25)	26,27,28	4	0.86	0.83	0.73	0.85	0.78	0.80	26
Jul/Aug	(2)	3,4,5,6,7	1	0.86	0.82	0.70	0.84	0.76	0.78	27
	(9)	10,11,12	2	0.87	0.84	0.72	0.86	0.78	0.80	28
	(16)	17,18,19	3	0.87	0.83	0.69	0.85	0.76	0.78	29
	(23)	24,25,26	4	0.85	0.79	0.67	0.82	0.73	0.76	30
	(30)	31,1,2,3,	5	0.84	0.78	0.66	0.81	0.72	0.75	31
Aug/Sep	(6)	7,8,9,10,	1	0.85	0.80	0.67	0.83	0.74	0.76	32
	(13)	14,15,16	2	0.85	0.81	0.68	0.83	0.75	0.77	33
	(20)	21,22,23	3	0.88	0.83	0.72	0.86	0.78	0.80	34
	(27)	28,29,30	4	0.90	0.88	0.84	0.89	0.86	0.87	35
Septemb	(3)	4,5,6,7,8	1	0.92	0.91	0.88	0.92	0.90	0.90	36
	(10)	11,12,13	2	0.93	0.92	0.90	0.93	0.91	0.92	37
	(17)	18,19,20	3	0.93	0.92	0.93	0.93	0.93	0.93	38
	(24)	25,26,27	4	0.94	0.91	0.96	0.93	0.94	0.95	39
Oct/Nov	(1)	2,3,4,5,6	1	0.93	0.89	0.91	0.91	0.90	0.92	40
	(8)	9,10,11,1	2	0.94	0.92	0.98	0.93	0.95	0.96	41
	(15)	16,17,18	3	0.97	1.00	1.07	0.99	1.04	1.02	42
	(22)	23,24,25	4	0.98	1.03	1.15	1.01	1.09	1.07	43
	(29)	30,31,1,2	5	0.97	1.02	1.17	1.00	1.10	1.07	44
Nov/Dec	(5)	6,7,8,9,1	1	0.98	1.01	1.18	1.00	1.10	1.08	45
	(12)	13,14,15	2	0.99	1.02	1.21	1.01	1.12	1.10	46
	(19)	20,21,22	3	0.95	0.94	1.16	0.95	1.05	1.06	47
	(26)	27,28,29	4	1.00	1.07	1.24	1.04	1.16	1.12	48
Decembe	(3)	4,5,6,7,8	1	1.02	1.10	1.30	1.06	1.20	1.16	49
	(10)	11,12,13	2	1.02	1.11	1.30	1.07	1.21	1.16	50
	(17)	18,19,20	3	0.96	1.00	1.21	0.98	1.11	1.09	51
	(24)	25,26,27	4	1.04	1.07	1.24	1.06	1.16	1.14	52

2006
WEEKLY GROUP MEAN FACTORS
AVERAGE: 2003, 2004, 2005
AS PERCENT OF AADT

			Month	Urban	Arterial	recreation	Group	Group	Group	Year
Month	Start Date	Dates	Week #	Group I	Group II	Group III	I + II	II + III	I + III	Week #
Jan/Feb	(1)	2,3,4,5,6	1	94.34	87.72	71.94	90.91	78.74	81.30	1
	(8)	9,10,11,1	2	92.59	84.75	70.42	88.50	76.92	80.00	2
	(15)	16,17,18	3	93.46	85.47	70.42	89.29	76.92	80.00	3
	(22)	23,24,25	4	94.34	86.21	70.42	90.09	77.52	80.65	4
	(29)	30,31,1,2	5	96.15	87.72	73.53	91.74	80.00	83.33	5
Feb/Mar	(5)	6,7,8,9,1	1	93.46	85.47	70.92	89.29	77.52	80.65	6
	(12)	13,14,15	2	97.09	91.74	74.07	94.34	81.97	84.03	7
	(19)	20,21,22	3	98.04	91.74	76.34	94.34	83.33	85.47	8
	(26)	27,28,1,2	4	93.46	86.21	72.46	89.29	78.74	81.30	9
March	(5)	6,7,8,9,1	1	95.24	88.50	73.53	91.74	80.00	82.64	10
	(12)	13,14,15	2	99.01	91.74	76.92	95.24	83.33	86.21	11
	(19)	20,21,22	3	100.00	92.59	78.74	96.15	84.75	87.72	12
	(26)	27,28,29	4	99.01	91.74	77.52	95.24	84.03	86.96	13
April/May	(2)	3,4,5,6,7	1	102.04	93.46	80.00	97.09	86.21	89.29	14
	(9)	10,11,12	2	103.09	95.24	84.03	99.01	89.29	92.59	15
	(16)	17,18,19	3	103.09	97.09	89.29	100.00	92.59	95.24	16
	(23)	24,25,26	4	104.17	96.15	88.50	100.00	91.74	95.24	17
	(30)	1,2,3,4,5	5	107.53	100.00	91.74	103.09	95.24	99.01	18
May/Jun	(7)	8,9,10,11	1	108.70	103.09	95.24	105.26	99.01	101.01	19
	(14)	15,16,17	2	108.70	105.26	101.01	106.38	103.09	104.17	20
	(21)	22,23,24	3	107.53	104.17	100.00	105.26	102.04	103.09	21
	(28)	29,30,31	4	111.11	106.38	106.38	108.70	106.38	108.70	22
June	(4)	5,6,7,8,9	1	111.11	107.53	109.89	108.70	108.70	109.89	23

	(11)	12,13,14	2	111.11	111.11	114.94	111.11	112.36	112.36	24
	(18)	19,20,21	3	113.64	113.64	128.21	113.64	120.48	120.48	25
	(25)	26,27,28	4	116.28	120.48	136.99	117.65	128.21	125.00	26
Jul/Aug	(2)	3,4,5,6,7	1	116.28	121.95	142.86	119.05	131.58	128.21	27
	(9)	10,11,12	2	114.94	119.05	138.89	116.28	128.21	125.00	28
	(16)	17,18,19	3	114.94	120.48	144.93	117.65	131.58	128.21	29
	(23)	24,25,26	4	117.65	126.58	149.25	121.95	136.99	131.58	30
	(30)	31,1,2,3,	5	119.05	128.21	151.52	123.46	138.89	133.33	31
Aug/Sep	(6)	7,8,9,10,	1	117.65	125.00	149.25	120.48	135.14	131.58	32
	(13)	14,15,16	2	117.65	123.46	147.06	120.48	133.33	129.87	33
	(20)	21,22,23	3	113.64	120.48	138.89	116.28	128.21	125.00	34
	(27)	28,29,30	4	111.11	113.64	119.05	112.36	116.28	114.94	35
Septemb	(3)	4,5,6,7,8	1	108.70	109.89	113.64	108.70	111.11	111.11	36
	(10)	11,12,13	2	107.53	108.70	111.11	107.53	109.89	108.70	37
	(17)	18,19,20	3	107.53	108.70	107.53	107.53	107.53	107.53	38
	(24)	25,26,27	4	106.38	109.89	104.17	107.53	106.38	105.26	39
Oct/Nov	(1)	2,3,4,5,6	1	107.53	112.36	109.89	109.89	111.11	108.70	40
	(8)	9,10,11,1	2	106.38	108.70	102.04	107.53	105.26	104.17	41
	(15)	16,17,18	3	103.09	100.00	93.46	101.01	96.15	98.04	42
	(22)	23,24,25	4	102.04	97.09	86.96	99.01	91.74	93.46	43
	(29)	30,31,1,2	5	103.09	98.04	85.47	100.00	90.91	93.46	44
Nov/Dec	(5)	6,7,8,9,1	1	102.04	99.01	84.75	100.00	90.91	92.59	45
	(12)	13,14,15	2	101.01	98.04	82.64	99.01	89.29	90.91	46
	(19)	20,21,22	3	105.26	106.38	86.21	105.26	95.24	94.34	47
	(26)	27,28,29	4	100.00	93.46	80.65	96.15	86.21	89.29	48
Decembe	(3)	4,5,6,7,8	1	98.04	90.91	76.92	94.34	83.33	86.21	49
	(10)	11,12,13	2	98.04	90.09	76.92	93.46	82.64	86.21	50
	(17)	18,19,20	3	104.17	100.00	82.64	102.04	90.09	91.74	51
	(24)	25,26,27	4	96.15	93.46	80.65	94.34	86.21	87.72	52

2006 Maine Transportation Count Book

Knox

	TOWN	STATION	ROAD	LOCATION	TYPE	GROUP	AADT02	AADT03	AADT04	AADT05	AADT06
13	APPLETON	31002	00323	IR 323 (COLLINSTOWN RD) NE/O SR 105	C	I	.	.	.	330	.
13	APPLETON	31006	00323	IR 323 (COLLINSTOWN RD) SW/O SR 105	C	I	.	.	.	290	.
13	APPLETON	43704	00327	IR 327 (W APPLETON RD) SE/O IR 331	C	I	340	.	.	430	.
13	APPLETON	43708	00327	IR 327 (W APPLETON RD) NW/O IR 331	C	I	210	.	.	280	.
13	APPLETON	43502	00331	IR 331 (APPLETON RIDGE RD) NE/O SR 105	C	I	.	.	.	200	.
13	APPLETON	43702	00331	IR 331 (APPLETON RIDGE RD) NE/O IR 327	C	I	200	.	.	300	.
13	APPLETON	32204	00378	IR 378 (SENNEBEC RD) SE/O SR 105/131	C	I	.	.	.	920	.
13	APPLETON	32306	00396	IR 396(SENNEBEC RD) SW/O IR 396(PEABODY)	C	I	780	.	.	840	.
13	APPLETON	31004	0105X	SR 105 SE/O IR 323 (COLLINSTOWN RD)	C	I	.	.	.	990	.
13	APPLETON	32102	0105X	SR 105/131 NE/O SR 105	C	I	.	.	.	1620	.
13	APPLETON	32108	0105X	SR 105 NW/O SR 131	C	I	.	.	.	960	.
13	APPLETON	32404	0105X	SR 105 SE/O SR 131@ BR# 5529	C	I	860	.	.	850	.
13	APPLETON	32406	0105X	SR 105/131 SW/O SR 105	C	I	.	.	.	1800	.
13	APPLETON	66705	0105X	SR 105/131 S/O IR 327 (W APPLETON RD)	C	II	1770	.	.	1930	.
13	APPLETON	32402	0131X	SR 131 NE/O SR 105	C	I	.	.	.	1690	.
13	CAMDEN	00306	0001X	US 1 (ELM ST) SW/O SCHOOL ST	C	ATR03606	12780	.	.	13750	.
13	CAMDEN	00402	0001X	US 1 (MAIN ST) NE/O SR 105 (WASHINGTON)	C	ATR03606	.	.	.	12030	.
13	CAMDEN	00406	0001X	US 1 (MAIN ST) SW/O SR 105 (WASHINGTON)	C	ATR03606	15170	.	.	12480	.
13	CAMDEN	00501	0001X	US 1 (MAIN ST) N/O BAYVIEW ST	C	ATR03606	14320	.	.	10180	.
13	CAMDEN	00702	0001X	US 1 (HIGH ST) NE/O SR 52 (MOUNTAIN ST)	C	ATR03606	11760	.	.	11250	.
13	CAMDEN	00705	0001X	US 1 (MAIN ST) S/O SR 52 (MOUNTAIN ST)	C	ATR03606	.	.	.	11210	.
13	CAMDEN	00802	0001X	US 1 (HIGH ST) NE/O ROCKBROOK DR	C	ATR03606	10480	.	.	9600	.
13	CAMDEN	01002	0001X	US 1 (HIGH ST) NE/O MARINE AVE	C	ATR03606	8860	.	.	8730	.
13	CAMDEN	01902	0001X	US 1 (ELM ST) NE/O CURTIS ST	C	ATR03606	16290	.	.	14290	.
13	CAMDEN	42602	0001X	US 1(BELFAST) NE/O IR570(STATE PARK ENT)	C	ATR03606	7960	.	.	7610	.
13	CAMDEN	42606	0001X	US 1 (BELFAST ST) SW/O IR 570	C	ATR03606	8630	.	.	8100	.
13	CAMDEN	50001	0001X	US 1 (HIGH) N/O IR 566 @ LINCOLNVILLE TL	C	ATR03606	7860	.	.	7410	.
13	CAMDEN	00606	00346	MECHANIC ST SW/O SR 105 (WASHINGTON ST)	C	II	5690	.	.	4810	.
13	CAMDEN	02207	00346	MECHANIC ST W/O JOHN ST	C	II	3080	.	.	3020	.
13	CAMDEN	39708	00346	IR 346 (MELVIN HEIGHTS RD) NW/O IR 350	C	I	1640	.	.	1780	.
13	CAMDEN	39208	00350	IR 350(BARNESTOWN) NW/O IR362(MOLYNEAUX)	C	II	680	.	.	710	.
13	CAMDEN	39707	00350	IR 350 (HOSMER PD RD) W/O IR 1130(ANNIS)	C	II	1280	.	.	1250	.
13	CAMDEN	39202	00362	IR 362(MOLYNEAUX) NE/O IR350(BARNESTOWN)	C	II	1480	.	.	1620	.
13	CAMDEN	03308	00385	COBB ST NW/O MECHANIC ST	C	II	.	.	.	1320	.

2006 Maine Transportation Count Book

County

Knox

TOWN	STATION	ROAD	LOCATION	TYPE	GROUP	AADT02	AADT03	AADT04	AADT05	AADT06
CAMDEN	30006	00385	IR 385 (COBB) SW/O SR 105 (WASHINGTON)	C	II	.	.	.	320	.
CAMDEN	39307	00387	IR 387(MOLYNEAUX RD) W/O SR 52(TURNPIKE)	C	II	730	.	.	830	.
CAMDEN	03504	00442	BAYVIEW ST SE/O BEACON AVE	C	II	610	.	.	520	.
CAMDEN	04008	00443	JOHN ST NW/O US 1 (ELM ST)	C	II	.	.	.	3130	.
CAMDEN	00504	00445	BAYVIEW ST SE/O COMMERCIAL ST	C	II	.	.	.	2490	.
CAMDEN	05304	00445	BAYVIEW ST SE/O LIMEROCK ST	C	II	1110	.	.	890	.
CAMDEN	00404	00449	CHESTNUT ST (SB) SE/O US 1 (MAIN ST)	C	II	1790	.	.	1830	.
CAMDEN	03601	00449	CHESTNUT ST N/O ENT SHRIMER EST @ CUL	C	II	1150
CAMDEN	05101	00449	CHESTNUT ST N/O HIGHLAND AVE	C	II	1340	.	.	1190	.
CAMDEN	00708	0052X	SR 52 (MOUNTAIN ST) NW/O CENTRAL ST	C	II	3460	.	.	3240	.
CAMDEN	01100	0052X	SR 52 (MOUNTAIN ST) @ CUL	C	III	3880
CAMDEN	01708	0052X	SR 52 (MOUNTAIN ST) NW/O SPRING ST	C	II	3070	.	.	2950	.
CAMDEN	04608	0052X	SR 52 NW/O MILL ST	C	II	.	.	.	3780	.
CAMDEN	39301	0052X	SR 52(TURNPIKE DR) N/O IR 387(MOLYNEAUX)	C	II	3200	.	.	3200	.
CAMDEN	42607	00570	IR 570(STATE PARK ENT) W/O US 1(BELFAST)	C	II	1220	.	.	870	.
CAMDEN	04005	00972	CAMDEN ST S/O US 1 (ELM ST)	C	II	990	.	.	940	.
CAMDEN	05606	00981	UNION ST SW/O BELMONT ST	C	II	3710	.	.	3440	.
CAMDEN	00408	0105X	SR 105(WB)(WASHINGTON ST) NW/O US1(MAIN)	C	II	1860	.	.	1770	.
CAMDEN	00608	0105X	SR 105 (WASHINGTON ST) NW/O MECHANIC ST	C	II	4940	.	.	4630	.
CAMDEN	00901	0105X	SR 105 (WASHINGTON ST) N/O MT BATTIE ST	C	II	.	.	.	2020	.
CAMDEN	01200	0105X	SR 105 0.28 NW/O MT BATTIE ST @ CUL	C	II	2150
CAMDEN	01507	0105X	SR 105 (WASHINGTON ST) W/O GROVE ST	C	II	3980	.	.	3950	.
CAMDEN	04204	0105X	SR 105 (WASHINGTON ST) SE/O THOMAS ST	C	II	3220
CAMDEN	39608	0105X	SR 105 (WASHINGTON ST) NW/O IR 558	C	II	.	.	.	2830	.
CAMDEN	04206	03009	THOMAS ST SW/O SR 105 (WASHINGTON ST)	C	II	670	.	.	470	.
CAMDEN	01406	03011	GOULD ST SW/O MT BATTIE ST	C	II	2240	.	.	2150	.
CAMDEN	03206	03013	RAWSON AVE SW/O SR 105 (WASHINGTON ST)	C	II	630	.	.	870	.
CAMDEN	02808	03015	KNOWLTON ST NW/O MECHANIC ST	C	II	2210	.	.	1940	.
CAMDEN	01702	03016	SPRING ST NE/O SR 52 (MOUNTAIN ST)	C	II	.	.	.	320	.
CAMDEN	01706	03016	SPRING ST SW/O SR 52 (MOUNTAIN ST)	C	II	.	.	.	390	.
CAMDEN	02508	03027	PARK ST NW/O PEARL ST	C	II	1630	.	.	1870	.
CAMDEN	06204	03027	PARK ST SE/O US 1 (ELM ST)	C	II	1090	.	.	990	.
CAMDEN	06208	03027	PARK ST NW/O US 1 (ELM ST)	C	II	1850	.	.	2090	.
CAMDEN	02604	03029	FREE ST SE/O PEARL ST	C	II	.	.	.	3080	.

2006 Maine Transportation Count Book

Knox

TOWN	STATION	ROAD	LOCATION	TYPE	GROUP	AADT02	AADT03	AADT04	AADT05	AADT06
13 CAMDEN	04606	03034	MILL ST SW/O SR 52	C	II	.	.	.	180	.
13 CAMDEN	03808	03040	HARDEN AVE NW/O US 1 (HIGH ST)	C	II	420	.	.	300	.
13 CAMDEN	00707	03042	CENTRAL ST W/O SR 52 (MOUNTAIN ST)	C	II	.	.	.	740	.
13 CAMDEN	04104	03043	EATON AVE #1 SE/O US 1 (HIGH ST)	C	II	.	.	.	260	.
13 CAMDEN	00804	03046	SEA ST SE/O US 1 (HIGH ST)	C	II	1250	.	.	1000	.
13 CAMDEN	03906	03047	ATLANTIC AVE (EB) SW/O SEA ST	C	II	1080	.	.	760	.
13 CAMDEN	02506	03053	PEARL ST SW/O PARK ST	C	II	630	.	.	580	.
13 CAMDEN	02606	03053	PEARL ST SW/O FREE ST	C	II	.	.	.	560	.
13 CAMDEN	06306	03053	PEARL ST SW/O WILLOW ST	C	II	500
13 CAMDEN	05202	03059	LIMEROCK ST NE/O CHESTNUT ST	C	II	1270	.	.	1070	.
13 CAMDEN	05206	03059	LIMEROCK ST SW/O CHESTNUT ST	C	II	.	.	.	1470	.
13 CAMDEN	05706	03059	LIMEROCK ST SW/O BELMONT ST	C	II	1320	.	.	1140	.
13 CAMDEN	05604	03064	BELMONT ST SE/O UNION ST	C	II	1360	.	.	1320	.
13 CUSHING	35608	00440	IR 440 (FINN RD) NW/O SR97@FRIENDSHIP TL	C	II	530
13 CUSHING	34807	00442	IR 442 (CROSS RD) W/O IR 837 (TOWNHOUSE)	C	II	720	.	.	720	.
13 CUSHING	35104	00452	IR 452 SE/O IR 461 (PLEASANT PT RD) NJCT	C	III	210
13 CUSHING	34702	00461	IR 461(RIVER RD) NE/O IR 493(SPEAR MILL)	C	II	.	.	.	2580	.
13 CUSHING	34705	00461	IR 461(RIVER RD) S/O IR 493(SPEAR MILL)	C	II	.	.	.	2490	.
13 CUSHING	34803	00461	IR 461 (RIVER RD) E/O IR 442 (CROSS RD)	C	II	.	.	.	1840	.
13 CUSHING	34806	00461	IR 461 (PLEASANT PT RD) SW/O IR 837	C	III	1240	.	.	1290	.
13 CUSHING	35101	00461	IR 461(PLEASANT PT RD) N/O IR 452(N JCT)	C	III	530	.	.	520	.
13 CUSHING	35201	00461	IR 461 (PLEASANT PT) N/O IR 529 (STIFEL)	C	III	240	.	.	270	.
13 CUSHING	35606	0097X	SR 97 SW/O IR 440 (FINN RD)	C	II	910	.	.	1240	.
13 FRIENDSHIP	35504	00444	IR 444 (SALT POND RD) SE/O SR 97	C	III	260
13 FRIENDSHIP	35406	00455	IR 455 (MARTIN PT RD) SW/O SR 220	C	III	590
13 FRIENDSHIP	35306	00457	IR 457 (HARBOR RD) SW/O IR 858	C	III	1370	.	.	1370	.
13 FRIENDSHIP	35302	0097X	SR 97 NE/O SR 220	C	II	1380	.	.	1750	.
13 FRIENDSHIP	35506	0097X	SR 97 SW/O IR 444 (SALT POND RD)	C	III	900
13 FRIENDSHIP	35000	0220X	SR 220 @ WALDOBORO TL	C	II	1380	.	.	1340	.
13 FRIENDSHIP	35308	0220X	SR 220 NW/O SR 97	C	II	1780	.	.	1710	.
13 FRIENDSHIP	35401	0220X	SR 220 N/O IR 455	C	II	1550
13 HOPE	66803	0017X	SR 17 E/O IR 864 (PUSHAW) @ ROCKPORT TL	C	II	8580	.	.	7140	.
13 HOPE	66907	0017X	SR 17 W/O IR 417 (HARTS MILL RD)	C	II	.	.	.	7590	.
13 HOPE	63904	00350	IR 350 (BARNSTOWN RD) SE/O SR 235	C	II	650	.	.	770	.

2006 Maine Transportation Count Book

Knox

TOWN	STATION	ROAD	LOCATION	TYPE	GROUP	AADT02	AADT03	AADT04	AADT05	AADT06
13 HOPE	31804	00356	IR 356 (ALFORD LAKE RD) SE/O SR 235	C	II	270	.	.	320	.
13 HOPE	32708	00367	IR 367 (ALFORD LAKE RD) NW/O IR 603	C	II	.	.	.	540	.
13 HOPE	66906	00417	IR 417 (HARTS MILL RD) SW/O SR 17	C	I	.	.	.	770	.
13 HOPE	32502	01008	IR 1008 (CHURCH ST) NE/O SR 105	C	II	.	.	.	190	.
13 HOPE	32508	0105X	SR 105 NW/O SR 235	C	II	1230	.	.	1330	.
13 HOPE	39404	0105X	SR 105 SE/O SR 235	C	II	.	.	.	2390	.
13 HOPE	39407	0105X	SR 105/235 W/O SR 235	C	II	1380	.	.	1590	.
13 HOPE	32506	0235X	SR 235 SW/O SR 105	C	II	.	.	.	1220	.
13 HOPE	39401	0235X	SR 235 N/O SR 105 @BR# 2685	C	II	.	.	.	2060	.
13 HOPE	63906	0235X	SR 235 SW/O IR 350 (BARNSTOWN RD)	C	II	730	.	.	800	.
13 OWLS HEAD	37104	00487	IR 487 (ASH POINT DR) SE/O IR 488	C	III	.	.	.	1470	.
13 OWLS HEAD	37904	00487	IR 487 (ASH POINT) SE/O IR 818	C	III	.	.	.	820	.
13 OWLS HEAD	62705	00487	IR 487 (ASH POINT) S/O IR 1216 (WOOD)	C	III	.	.	.	2270	.
13 OWLS HEAD	37102	00488	IR 488 (SOUTH SHORE DR) NE/O IR 487	C	III	.	.	.	900	.
13 OWLS HEAD	37208	00488	IR 488 (N SHORE DR) NW/O IR 490(MAIN ST)	C	III	1300	.	.	1260	.
13 OWLS HEAD	62703	00488	IR 488 (NORTH SHORE DR) E/O IR 1216	C	III	.	.	.	2050	.
13 OWLS HEAD	37202	00490	IR 490 (MAIN) NE/O IR 488 (NORTH SHORE)	C	III	.	.	.	950	.
13 OWLS HEAD	37906	00494	IR 494 (DUBLIN RD) SW/O IR 487 (ASH PT)	C	II	.	.	.	1130	.
13 OWLS HEAD	37001	0073X	SR73(INGRAHAM HILL)N/O IR488(N SHORE DR)	C	II	7730	.	.	7900	.
13 OWLS HEAD	37005	0073X	SR 73 S/O IR 488 (NORTH SHORE DR)	C	II	.	.	.	3870	.
13 OWLS HEAD	42701	0073X	SR 73 N/O HRBSIDE TERR @ ROCKLAND TL	C	II	9110	.	.	9050	.
13 ROCKLAND	00206		EXIT FROM YOUTH CTR SW/O US 1(SB)(UNION)	T	I	.	.	.	200	.
13 ROCKLAND	03602	0001A	US 1A (BIRCH ST) NE/O N MAIN ST	C	II	.	.	.	6550	.
13 ROCKLAND	04006	0001A	US 1A (BROADWAY) SW/O HIGH SCHOOL DR	C	II	9850
13 ROCKLAND	04101	0001A	US 1A (BROADWAY) N/O RANKIN ST	C	II	.	.	.	10090	.
13 ROCKLAND	05201	0001A	US 1A (BROADWAY) N/O LIMEROCK ST	T	II	10420	.	.	8890	.
13 ROCKLAND	05205	0001A	US 1A (BROADWAY) S/O LIMEROCK ST	T	II	.	.	.	7720	.
13 ROCKLAND	07108	0001A	US 1A/SR 17 (MAVERICK ST) NW/O BREWSTER	C	II	11210	.	.	10300	.
13 ROCKLAND	00201	0001S	US 1 (SB) (UNION ST) N/O LIMEROCK ST	T	II	.	.	.	10120	.
13 ROCKLAND	00205	0001S	US 1 (SB) (UNION ST) S/O LIMEROCK ST	T	II	.	.	.	13590	.
13 ROCKLAND	02407	0001S	US 1 (SB)(RANKIN ST) W/O US 1 (NB)(MAIN)	T	II	10420	.	10120	11290	.
13 ROCKLAND	04406	0001S	US 1 (SB) (UNION ST) SW/O RANKIN ST	C	II	.	.	.	11690	.
13 ROCKLAND	04901	0001S	US 1 (SB) (UNION ST) N/O BEECH ST	C	II	.	.	.	10870	.
13 ROCKLAND	10001	0001S	US 1 (SB) (UNION ST) N/O MUSEUM ST	C	II	12200

2006 Maine Transportation Count Book

Knox

TOWN	STATION	ROAD	LOCATION	TYPE	GROUP	AADT02	AADT03	AADT04	AADT05	AADT06
ROCKLAND	01101	0001X	US 1 (NB) (MAIN ST) N/O US 1 (PARK DR)	C	II	11660
ROCKLAND	01107	0001X	US 1 (PARK ST) W/O US 1 (NB) (N MAIN ST)	C	II	13590	.	.	12800	.
ROCKLAND	01901	0001X	US 1 (NB) (MAIN ST) N/O LIMEROCK ST	C	II	.	.	.	11360	.
ROCKLAND	02405	0001X	US 1(NB) (MAIN ST) S/O US 1(SB) (RANKIN)	T	II	11460	.	10920	12620	.
ROCKLAND	02502	0001X	US 1 (MAIN ST) NE/O N MAIN ST	T	II	.	.	15210	15430	.
ROCKLAND	02902	0001X	US 1 (CAMDEN ST) NE/O WALDO AVE	C	II	.	.	.	15480	.
ROCKLAND	02906	0001X	US 1 (CAMDEN ST) SW/O WALDO AVE	C	II	19360	.	.	18180	.
ROCKLAND	03000	0001X	US 1 (CAMDEN ST) @ ROCKPORT TL	C	II	13260	.	.	12390	.
ROCKLAND	05507	0001X	US 1 (PARK ST) W/O US 1 (SB) (UNION ST)	C	II	10890	.	.	11150	.
ROCKLAND	05807	0001X	US 1 (PARK ST) W/O BROAD ST	C	II	10820	.	.	10590	.
ROCKLAND	05903	0001X	US 1 (PARK ST) E/O US 1A (BROADWAY)	C	II	10840
ROCKLAND	05907	0001X	US 1 (PARK ST) W/O US 1A (BROADWAY)	C	II	14750	.	.	13490	.
ROCKLAND	06302	0001X	US 1 (PAYNE AVE) NE/O PLEASANT ST	C	II	12700	.	.	12430	.
ROCKLAND	06306	0001X	US 1 (PAYNE AVE) SW/O PLEASANT ST	C	II	14470	.	.	14420	.
ROCKLAND	09005	0001X	US 1 (MAIN ST) S/O TALBOT AVE	C	II	.	.	.	11650	.
ROCKLAND	12602	0001X	US 1 (CAMDEN ST) NE/O WASHINGTON ST	C	II	19290	.	.	19120	.
ROCKLAND	12805	0001X	US 1 (CAMDEN ST) S/O TRINITY ST	C	II	.	.	.	14780	.
ROCKLAND	02501	0017X	N MAIN ST N/O US 1 (MAIN ST)	T	II	4020	.	3690	3700	.
ROCKLAND	03205	0017X	N MAIN ST S/O SR 17 (MAVERICK ST)	C	II	5440
ROCKLAND	03208	0017X	SR 17 (MAVERICK ST) NW/O N MAIN ST	C	II	10000
ROCKLAND	03605	0017X	N MAIN ST S/O US 1A (BIRCH ST)	C	II	4280	.	.	3390	.
ROCKLAND	01204	00430	SHERERS LN SE/O W MEADOW @BR# 0590	C	I	.	.	.	990	.
ROCKLAND	01300	00432	THOMPSON RD @BR# 0592	C	I	.	.	.	120	.
ROCKLAND	00401	0073X	SR 73 (S MAIN ST) N/O OCEANVIEW AVE	C	II	.	.	.	9670	.
ROCKLAND	00705	0073X	SR 73 (S MAIN ST) S/O OCEAN ST	C	II	.	.	.	9990	.
ROCKLAND	00906	0073X	SR 73 (S MAIN ST) SW/O WATER ST	C	II	.	.	.	9600	.
ROCKLAND	01001	0073X	SR 73 (S MAIN ST) N/O PLEASANT ST	C	II	.	.	.	11690	.
ROCKLAND	01105	0073X	SR 73 (S MAIN ST) S/O US 1 (PARK ST)	C	II	.	.	.	11300	.
ROCKLAND	11405	10005	ATLANTIC ST S/O SOUTH ST	C	I	.	.	.	410	.
ROCKLAND	04907	10009	BEECH ST W/O US 1 (SB) (UNION ST)	C	I	.	.	.	340	.
ROCKLAND	07106	10014	BREWSTER ST SW/O US 1A/SR 17 (MAVERICK)	C	I	240
ROCKLAND	05105	10016	BROAD ST S/O LIMEROCK ST	C	I	650	.	.	730	.
ROCKLAND	05805	10016	BROAD ST S/O US 1 (PARK ST)	C	I	.	.	.	360	.
ROCKLAND	00601	10017	BROADWAY N/O THOMASTON ST	S	I	4510

2006 Maine Transportation Count Book

Knox

	TOWN	STATION	ROAD	LOCATION	TYPE	GROUP	AADT02	AADT03	AADT04	AADT05	AADT06
13	ROCKLAND	05905	10017	BROADWAY S/O US 1 (PARK ST)	C	I	4610	.	.	3890	.
13	ROCKLAND	06005	10017	BROADWAY S/O PLEASANT	C	I	.	.	.	4580	.
13	ROCKLAND	03508	10022	CEDAR ST #1 NW/O BROADWAY	C	I	.	.	.	1520	.
13	ROCKLAND	00503	10032	CRESCENT ST E/O SR 73 (S MAIN ST)	C	I	670	.	.	630	.
13	ROCKLAND	10403	10032	CRESCENT ST E/O SCOTT ST	C	I	200	.	.	650	.
13	ROCKLAND	10407	10032	CRESCENT ST W/O SCOTT ST	C	I	.	.	.	250	.
13	ROCKLAND	10507	10032	CRESCENT ST W/O PACIFIC ST	C	I	.	.	.	320	.
13	ROCKLAND	02708	10035	CEDAR ST #2 NW/O US 1 (CAMDEN ST)	C	I	710	.	.	780	.
13	ROCKLAND	03604	10035	CEDAR ST #2 (OW) SE/O N MAIN ST	C	I	490	.	.	450	.
13	ROCKLAND	00707	10062	HOLMES ST W/O SR 73 (S MAIN ST)	C	I	.	.	.	550	.
13	ROCKLAND	11207	10062	HOLMES ST W/O LOVEJOY ST	C	I	530	.	.	430	.
13	ROCKLAND	00203	10079	LIMEROCK ST E/O US 1 (SB) (UNION ST)	T	I	.	.	.	2360	.
13	ROCKLAND	00207	10079	LIMEROCK ST W/O US 1 (SB) (UNION ST)	T	I	3110	.	.	3150	.
13	ROCKLAND	05203	10079	LIMEROCK ST E/O US 1A (BROADWAY)	T	I	.	.	.	2750	.
13	ROCKLAND	05207	10079	LIMEROCK ST W/O US 1A (BROADWAY)	T	I	2630	.	.	3140	.
13	ROCKLAND	05101	10080	LINCOLN ST N/O LIMEROCK ST	C	I	.	.	.	1030	.
13	ROCKLAND	08505	10080	LINCOLN ST S/O TALBOT AVE	C	I	.	.	.	460	.
13	ROCKLAND	02804	10090	MAVERICK ST SE/O US 1 (CAMDEN ST)	C	I	.	.	.	310	.
13	ROCKLAND	03204	10090	SR 17 (MAVERICK ST) SE/O N MAIN ST	C	II	5010	.	.	4330	.
13	ROCKLAND	00403	10093	MECHANIC ST E/O SR 73 (S MAIN ST)	C	I	980	.	.	950	.
13	ROCKLAND	00703	10099	OCEAN ST E/O SR 73 (S MAIN ST)	C	I	230	.	.	240	.
13	ROCKLAND	10501	10106	PACIFIC ST N/O CRESCENT ST	C	I	.	.	.	470	.
13	ROCKLAND	10505	10106	PACIFIC ST S/O CRESCENT ST	C	I	.	.	.	360	.
13	ROCKLAND	11901	10106	PACIFIC ST N/O MECHANIC ST	C	I	.	.	.	250	.
13	ROCKLAND	06207	10107	PARK ST W/O US 1 (PAYNE AVE)	C	I	.	.	.	1810	.
13	ROCKLAND	06908	10109	PEN BAY AVE NW/O US 1 (CAMDEN ST)	C	I	200	.	.	250	.
13	ROCKLAND	01007	10114	PLEASANT ST W/O SR 73 (S MAIN ST)	C	I	2030	.	.	1880	.
13	ROCKLAND	06003	10114	PLEASANT ST E/O BROADWAY	C	I	1650	.	.	1390	.
13	ROCKLAND	06303	10114	PLEASANT ST E/O US 1 (PAYNE AVE)	C	I	.	.	.	1980	.
13	ROCKLAND	06307	10114	PLEASANT ST W/O US 1 (PAYNE AVE)	C	I	.	.	.	540	.
13	ROCKLAND	13003	10116	PORT TERMINAL RD E/O US 1 (NB)(MAIN ST)	C	I	.	.	.	900	.
13	ROCKLAND	04103	10124	RANKIN ST E/O US 1A (BROADWAY)	C	I	1320	.	.	1150	.
13	ROCKLAND	04107	10124	RANKIN ST W/O US 1A (BROADWAY)	C	I	1800	.	.	1710	.
13	ROCKLAND	04408	10124	RANKIN ST NW/O US 1 (SB) (UNION ST)	C	I	.	.	.	1630	.

2006 Maine Transportation Count Book

County

Knox

TOWN	STATION	ROAD	LOCATION	TYPE	GROUP	AADT02	AADT03	AADT04	AADT05	AADT06
ROCKLAND	12903	10130	SCHOOL ST E/O US 1 (SB) UNION ST	C	I	1890	.	.	1780	.
ROCKLAND	10401	10131	SCOTT ST N/O CRESCENT ST	C	I	550	.	.	580	.
ROCKLAND	11407	10135	SOUTH ST W/O ATLANTIC ST	C	II	.	.	.	30	.
ROCKLAND	00805	10140	SUFFOLK ST S/O OCEAN ST	C	I	.	.	.	530	.
ROCKLAND	10801	10140	SUFFOLK ST N/O CRESCENT ST	C	I	.	.	.	340	.
ROCKLAND	10805	10140	SUFFOLK ST S/O CRESCENT ST	C	I	.	.	.	190	.
ROCKLAND	03804	10145	TALBOT AVE SE/O OLD COUNTY RD	C	I	.	.	.	570	.
ROCKLAND	04603	10145	TALBOT AVE E/O US 1 SB (UNION ST)	C	I	1030	.	.	950	.
ROCKLAND	04703	10145	TALBOT AVE E/O US 1A (BROADWAY)	C	I	530	.	.	520	.
ROCKLAND	00506	10148	THOMASTON ST SW/O SR 73 (S MAIN ST)	C	I	3910	.	.	3290	.
ROCKLAND	00603	10148	THOMASTON ST E/O BROADWAY	S	I	3490
ROCKLAND	00607	10148	THOMASTON ST W/O GORDON DR	S	I	2270
ROCKLAND	01603	10149	TILLSON AVE E/O US 1 (NB) (MAIN ST)	C	II	1950	.	.	1900	.
ROCKLAND	05505	10155	UNION ST S/O US 1 (PARK ST)	C	I	.	.	.	4280	.
ROCKLAND	00605	10175	GORDON DR S/O THOMASTON ST	S	I	1730
ROCKLAND	02903	10181	WALDO AVE E/O US 1 (CAMDEN ST)	C	II	3160	.	.	3020	.
ROCKLAND	00904	10186	WATER ST SE/O SR 73 (S MAIN ST)	C	I	.	.	.	1760	.
ROCKLAND	03102	10193	OLD COUNTY RD NE/O SR 17 (LAKEVIEW DR)	C	I	.	.	.	4590	.
ROCKLAND	03802	10193	OLD COUNTY RD NE/O TALBOT AVE	C	II	.	.	.	6750	.
ROCKLAND	03806	10193	OLD COUNTY RD SW/O TALBOT AVE	C	I	.	.	.	6890	.
ROCKLAND	12406	10193	OLD COUNTY RD SW/O LAKE AVE	C	I	.	.	.	7090	.
ROCKLAND	01103	10194	PARK DR E/O US 1 (NB) (MAIN ST)	C	II	.	.	.	3610	.
ROCKLAND	03506	10300	BROADWAY SW/O CEDAR ST #1	C	I	.	.	.	400	.
ROCKPORT	03504		QUARRY ST(WSTE STA ENT) SE/O LIMEROCK ST	M	I	.	.	900	.	890
ROCKPORT	03606	0001X	US 1 SW/O ROCKPORT WOODS	A		.	.	14420	13860	13820
ROCKPORT	77006	0001X	US 1 0.1 MI S/O CAMDEN TL	A		15200	14410	.	.	.
ROCKPORT	00104	0001X	US 1 (COMMERCIAL ST) SE/O PASCALS AVE	C	ATR03606	14040	.	.	14400	.
ROCKPORT	01201	0001X	US 1 (COMMERCIAL ST) N/O SR 90 (WEST ST)	C	ATR03606	15170	.	.	14510	.
ROCKPORT	01205	0001X	US 1 (COMMERCIAL ST) S/O SR 90 (WEST ST)	C	ATR03606	12870	.	.	12720	.
ROCKPORT	38401	0001X	US 1(COMMERCIAL) N/O IR 441(OLD CNTY RD)	C	ATR03606	.	.	.	15080	.
ROCKPORT	38405	0001X	US 1(COMMERCIAL) S/O IR 441(OLD CNTY RD)	C	II	13380	.	.	13030	.
ROCKPORT	66505	0001X	US 1 (COMMERCIAL ST) S/O IR 384	C	ATR03606	.	.	.	13350	.
ROCKPORT	36504	0017X	SR 17 (ROCKLAND RD) SE/O IR 389 (MEADOW)	C	II	10170	.	.	9290	.
ROCKPORT	37405	0017X	SR 17 S/O IR 1024 (OLD ROCKLAND)(S JCT)	C	II	.	.	.	8630	.

2006 Maine Transportation Count Book

Knox

	TOWN	STATION	ROAD	LOCATION	TYPE	GROUP	AADT02	AADT03	AADT04	AADT05	AADT06
13	ROCKPORT	38804	0017X	SR 17 (ROCKLAND RD) SE/O SR 90 (WEST ST)	C	II	8660	.	.	8010	.
13	ROCKPORT	38808	0017X	SR 17 (ROCKLAND RD) NW/O SR 90 (WEST ST)	C	II	9440	.	.	9060	.
13	ROCKPORT	00303	00364	MAIN ST E/O CAMROCK DR	M	II	1190
13	ROCKPORT	01404	00364	PLEASANT ST SE/O US 1 (COMMERCIAL ST)	C	II	.	.	.	150	.
13	ROCKPORT	03203	00364	MAIN ST E/O US 1 (COMMERCIAL ST)	C	II	950	.	.	1020	.
13	ROCKPORT	03207	00364	MAIN ST W/O US 1 (COMMERCIAL ST)	M	II	1140	.	1160	1220	.
13	ROCKPORT	39004	00364	IR 364 (MAIN ST) SE/O IR 389 (SIMONTON)	C	II	1150	.	.	1470	.
13	ROCKPORT	39008	00364	IR 364 (MAIN ST) NW/O IR 389 (SIMONTON)	C	I	1120	.	.	1260	.
13	ROCKPORT	01308	00369	CROSS ST NW/O SR 90 (WEST ST)	M	II	700	.	900	.	820
13	ROCKPORT	38606	00384	IR 384 (ROCKVILLE) SW/O SR 17 (ROCKLAND)	C	II	.	.	.	350	.
13	ROCKPORT	66507	00384	IR 384 (ROCKVILLE ST) W/O IR 1100	M	II	810	.	870	470	.
13	ROCKPORT	36907	00386	IR 386(GURNEY) W/O IR 1024(OLD ROCKLAND)	M	I	.	.	.	830	890
13	ROCKPORT	36401	00389	IR 389 (MEADOW ST) N/O SR 90 (WEST ST)	C	II	.	.	.	3610	.
13	ROCKPORT	36405	00389	IR 389 (MEADOW ST) S/O SR 90 (WEST ST)	M	II	.	.	2900	2580	2570
13	ROCKPORT	36502	00389	IR 389 (MEADOW ST) NE/O SR 17 (ROCKLAND)	C	II	2290	.	.	2050	.
13	ROCKPORT	39002	00389	IR 389 (PARK ST) NE/O IR 364 (MAIN ST)	C	II	4070	.	.	4250	.
13	ROCKPORT	39006	00389	IR 389 (PARK ST) SW/O IR 364 @ BR# 5142	M	II	4670	.	4950	4730	4480
13	ROCKPORT	33208	00393	IR 393 (SOUTH ST) NW/O US 1 (COMMERCIAL)	M	II	1850	.	1930	1880	2990
13	ROCKPORT	36704	00437	IR 437 (MILL ST) SE/O SR 90 (WEST ST)	M	I	740	.	740	770	720
13	ROCKPORT	37704	00438	IR 438 (WARRENTON ST) SE/O US 1	M	II	1910	.	.	1130	2160
13	ROCKPORT	38406	00441	IR 441(OLD CNTY RD) SW/O US1(COMMERCIAL)	C	I	.	.	.	4000	.
13	ROCKPORT	01908	00449	UNION ST NW/O CENTRAL ST	C	II	.	.	.	4100	.
13	ROCKPORT	02006	00449	MECHANIC ST SW/O RUSSELL AVE	C	II	570	.	.	610	.
13	ROCKPORT	02106	00449	BEAUCHAMP AVE SW/O SPEAR ST @ CUL	C	II	210	.	.	290	.
13	ROCKPORT	02403	00449	RUSSELL AVE E/O CALDERWOOD LN	C	II	1580	.	.	1390	.
13	ROCKPORT	02405	00449	CALDERWOOD LN S/O RUSSELL AVE	C	II	590	.	.	620	.
13	ROCKPORT	37607	00677	IR 677 (PARK ST) W/O IR 389 (MEADOW ST)	C	II	5240	.	.	1240	.
13	ROCKPORT	38801	00677	IR 677 (PARK ST) N/O SR 90 (WEST ST)	C	II	1020	.	.	1200	.
13	ROCKPORT	01203	0090X	SR 90 (WEST ST) E/O US 1 (COMMERCIAL ST)	C	II	2070	.	.	2020	.
13	ROCKPORT	01207	0090X	SR 90 (WEST ST) W/O US 1 (COMMERCIAL ST)	C	II	6980	.	.	6740	.
13	ROCKPORT	36403	0090X	SR 90 (WEST ST) E/O IR 389 (MEADOW ST)	C	II	7020	.	.	7320	.
13	ROCKPORT	36706	0090X	SR 90 (WEST ST) SW/O IR 437 (MILL ST)	C	II	.	.	.	6450	.
13	ROCKPORT	38802	0090X	SR 90 (WEST ST) NE/O SR 17 (ROCKLAND RD)	C	II	7530
13	ROCKPORT	38806	0090X	SR 90 (WEST ST) SW/O SR 17 (ROCKLAND RD)	C	II	7220	.	.	7450	.

2006 Maine Transportation Count Book

Knox

TOWN	STATION	ROAD	LOCATION	TYPE	GROUP	AADT02	AADT03	AADT04	AADT05	AADT06
13 ROCKPORT	00102	00970	PASCALS AVE NE/O US 1 (COMMERCIAL ST)	C	II	3470	.	.	3510	.
13 ROCKPORT	00506	00970	BEECH HILL RD SW/O US 1 (COMMERCIAL ST)	C	II	230	.	.	430	.
13 ROCKPORT	01602	00970	PASCALS AVE NE/O HIGH ST @ GOOSE RV BR	C	II	6270	.	.	5150	.
13 ROCKPORT	03002	00972	CAMDEN ST NE/O MAIN ST	C	II	.	.	.	790	.
13 ROCKPORT	03302	00972	CAMDEN ST NE/O US 1 (COMMERCIAL ST)	C	II	720	.	.	590	.
13 ROCKPORT	01708	00981	MAIN ST NW/O PASCALS AVE	C	II	.	.	.	1240	.
13 ROCKPORT	02801	00981	UNION ST N/O GROVE ST	M	II	4100	.	4070	3710	.
13 ROCKPORT	02805	00981	UNION ST S/O GROVE ST	M	II	3970	.	.	3930	3990
13 ROCKPORT	03401	00981	UNION ST N/O LIMEROCK ST	C	II	.	.	.	3390	.
13 ROCKPORT	01907	00984	CENTRAL ST W/O UNION ST	C	II	5580	.	.	5520	.
13 ROCKPORT	01102	00985	PASCALS AVE NE/O SR 90 (WEST ST)	C	II	.	.	.	5060	.
13 ROCKPORT	01403	00987	HIGH ST E/O US 1 (COMMERCIAL ST)	C	II	.	.	.	120	.
13 ROCKPORT	02004	00999	RUSSELL AVE SE/O MECHANIC ST	C	II	2060	.	.	1890	.
13 ROCKPORT	03402	03059	LIMEROCK ST NE/O UNION ST	C	II	1150	.	.	1110	.
13 ROCKPORT	03502	03059	LIMEROCK ST NE/O QUARRY RD	C	II	.	.	.	1900	.
13 SOUTH THOMASTON	36304	00474	IR 474 (SPRUCE HEAD ISLAND) SE/O IR 1246	C	II	1180
13 SOUTH THOMASTON	67900	00474	IR 474 @ BR# 5578(SPRUCE HEAD ISLAND BR)	C	II	.	.	.	980	.
13 SOUTH THOMASTON	40007	00476	IR 476 (GRIERSON RD) W/O SR 73	C	II	600	.	.	570	.
13 SOUTH THOMASTON	36603	00482	IR 482 (WATERMAN BEACH) E/O SR 73(S JCT)	C	III	460
13 SOUTH THOMASTON	36808	00491	IR 491 (BUTTERMILK RD) NW/O SR 73	C	II	1550	.	.	1360	.
13 SOUTH THOMASTON	37308	00492	IR 492 (WESTBROOK RD) NW/O SR 73	C	II	.	.	.	1310	.
13 SOUTH THOMASTON	37303	00494	IR 494 (DUBLIN RD) E/O SR 73	C	II	.	.	.	1160	.
13 SOUTH THOMASTON	36301	0073X	SR 73 N/O IR 474	C	II	.	.	.	2120	.
13 SOUTH THOMASTON	36307	0073X	SR 73 W/O IR 1246 (VILLAGE RD)	C	II	.	.	.	1360	.
13 SOUTH THOMASTON	36605	0073X	SR 73 S/O IR 482	C	II	2300	.	.	2140	.
13 SOUTH THOMASTON	36802	0073X	SR 73 NE/O IR 491 (BUTTERMILK RD)	C	II	3730	.	.	3510	.
13 SOUTH THOMASTON	37301	0073X	SR 73 N/O IR 494	C	II	.	.	.	3880	.
13 SOUTH THOMASTON	37306	0073X	SR 73 SW/O IR 492	C	II	3610	.	.	3400	.
13 SOUTH THOMASTON	34501	0131X	SR 131 (ST GEORGE) N/O IR 492(WESTBROOK)	C	I+II	5820	.	.	6150	.
13 ST GEORGE	35806	00391	SR 131 SW/O IR 462 (GLENMERE RD)	C	II	.	.	.	1770	.
13 ST GEORGE	35808	00462	IR 462 (GLENMERE RD) NW/O SR 131 (S JCT)	C	II	.	.	.	510	.
13 ST GEORGE	36007	00462	IR 462 (WALLASTON) W/O SR 131 (N JCT)	C	II	.	.	.	880	.
13 ST GEORGE	39807	00462	IR 462 (TURKEY COVE RD) W/O IR 466	C	II	.	.	.	730	.
13 ST GEORGE	34103	00468	IR 468 (HART NECK RD) E/O SR 131	C	II	.	.	.	520	.

2006 Maine Transportation Count Book

Knox

TOWN	STATION	ROAD	LOCATION	TYPE	GROUP	AADT02	AADT03	AADT04	AADT05	AADT06
13 ST GEORGE	36205	00477	IR 477 (CLARK ISLAND RD) S/O SR 73	C	II	.	.	.	540	.
13 ST GEORGE	36103	0073X	SR 73 E/O SR 131	C	II	.	.	.	1460	.
13 ST GEORGE	30404	00755	IR 755 (CLINE RD) SE/O IR 761	C	II	430	.	.	500	.
13 ST GEORGE	35804	01019	IR 1019 (DRIFT INN RD) SE/O SR 131	C	II	.	.	.	390	.
13 ST GEORGE	35802	0131X	SR 131 NE/O IR 1019	C	II	.	.	.	1410	.
13 ST GEORGE	35902	0131X	SR 131 NE/O IR 458 (RIDGE RD) @ BR# 2558	C	II	.	.	.	1820	.
13 ST GEORGE	36003	0131X	SR 131 E/O IR 462 (N JCT)	C	II	.	.	.	2830	.
13 ST GEORGE	36005	0131X	SR 131 S/O IR 462	C	II	.	.	.	2470	.
13 ST GEORGE	36101	0131X	SR 131 N/O SR 73	C	I+II	.	.	.	4660	.
13 ST GEORGE	36105	0131X	SR 131 S/O SR 73	C	II	.	.	.	4000	.
13 ST GEORGE	39904	0131X	SR 131 SE/O IR 921 (SMALLEY TOWN RD)	C	II	.	.	.	3200	.
13 THOMASTON	00303	0001X	US 1/SR 131 (MAIN ST) E/O BEECHWOOD ST	C	II	17530	.	.	13820	.
13 THOMASTON	00307	0001X	US 1/SR 131 (MAIN ST) W/O KNOX ST	C	II	.	.	.	13490	.
13 THOMASTON	01203	0001X	US 1/SR 131 (MAIN ST) E/O KOSSUTH ST	C	II	.	.	.	12110	.
13 THOMASTON	01707	0001X	US 1/SR 131 (MAIN ST) W/O FISH ST	C	II	.	.	.	15010	.
13 THOMASTON	01806	0001X	US 1/SR 131 (MAIN ST) SW/O SR 131 (HIGH)	C	II	.	.	.	18070	.
13 THOMASTON	01902	0001X	US 1 (NEW COUNTY RD) NE/O OLD COUNTY RD	C	II	14260	.	.	13090	.
13 THOMASTON	02203	0001X	US 1/SR 131 (MAIN) E/O SR 131(OYSTER RV)	C	II	.	.	.	10980	.
13 THOMASTON	02207	0001X	US 1 (S WARREN RD) W/O SR 131(OYSTER RV)	C	II	.	.	.	9290	.
13 THOMASTON	03702	0001X	US 1 (NEW COUNTY RD) NE/O OLD HIGH ST	C	II	.	.	.	17040	.
13 THOMASTON	38106	0001X	US 1 (NEW CNTY) SW/O IR 491 (BUTTERMILK)	C	II	13890	.	.	12830	.
13 THOMASTON	00102	00421	BEECHWOOD ST NE/O STARR ST	C	I	1950	.	.	1690	.
13 THOMASTON	00202	00421	BEECHWOOD ST NE/O ERIN ST	C	I	2270	.	.	2050	.
13 THOMASTON	68200	00434	IR 434 (GREEN HOUSE HILL RD) @ BR# 0593	C	I	.	.	.	30	.
13 THOMASTON	01901	00441	OLD COUNTY RD N/O BROADWAY	C	I	5050	.	.	4990	.
13 THOMASTON	01006	00461	WADSWORTH ST SW/O WATER ST @ BR# 2904	C	I	4050	.	.	3820	.
13 THOMASTON	01205	00461	WADSWORTH ST S/O US 1/SR 131 (MAIN ST)	C	I	2020	.	.	1990	.
13 THOMASTON	38105	00491	IR 491 (BUTTERMILK LN) S/O US1(NEW CNTY)	C	II	.	.	.	2300	.
13 THOMASTON	00507	00879	HYLER ST W/O KNOX ST	C	I	760	.	.	600	.
13 THOMASTON	02803	00879	HYLER ST E/O WADSWORTH ST	C	I	.	.	.	260	.
13 THOMASTON	01002	00883	WATER ST NE/O WADSWORTH ST	C	I	2720	.	.	2950	.
13 THOMASTON	03607	00883	WATER ST W/O KNOX ST	C	I	.	.	.	2670	.
13 THOMASTON	02601	00937	BOOKER ST N/O US 1/SR 131 (MAIN ST)	C	I	.	.	.	860	.
13 THOMASTON	01401	00940	ERIN ST N/O US 1/SR 131 (MAIN ST)	C	I	1070	.	.	980	.

2006 Maine Transportation Count Book

Knox

	TOWN	STATION	ROAD	LOCATION	TYPE	GROUP	AADT02	AADT03	AADT04	AADT05	AADT06
13	THOMASTON	00703	00945	THATCHER ST E/O KNOX ST	C	I	1750	.	.	1870	.
13	THOMASTON	01705	00945	FISH ST S/O US 1/SR 131 (MAIN ST)	C	I	1850	.	.	2280	.
13	THOMASTON	00503	00946	GLEASON ST E/O KNOX ST	C	I	840	.	.	740	.
13	THOMASTON	01607	00946	GLEASON ST W/O FISH ST	C	I	.	.	.	160	.
13	THOMASTON	01505	00948	ROXBURY ST S/O US 1/SR 131 (MAIN ST)	C	I	.	.	.	380	.
13	THOMASTON	00807	00951	ELLIOT ST W/O KNOX ST	C	I	.	.	.	220	.
13	THOMASTON	01405	00964	ROBINSON ST S/O US 1/SR 131 (MAIN ST)	C	I	380	.	.	390	.
13	THOMASTON	03705	01013	OLD HIGH ST S/O US 1 (NEW COUNTY RD)	C	I	.	.	.	130	.
13	THOMASTON	00501	01109	KNOX ST N/O GLEASON ST	C	I	.	.	.	1420	.
13	THOMASTON	00505	01109	KNOX ST S/O GLEASON ST	C	I	1390	.	.	1190	.
13	THOMASTON	00705	01109	KNOX ST S/O THATCHER ST	C	I	.	.	.	2560	.
13	THOMASTON	00805	01109	KNOX ST S/O ELLIOT ST	C	I	.	.	.	980	.
13	THOMASTON	01804	0131X	SR 131 (HIGH ST) SE/O US 1 (MAIN ST)	C	I+II	6330	.	.	6270	.
13	THOMASTON	02208	0131X	SR 131 (OYSTER RV RD) NW/O US 1(MAIN ST)	C	I+II	.	.	.	2220	.
13	THOMASTON	02308	0131X	SR 131 NW/O STUDLEY RD @ TL	C	I+II	.	.	.	2030	.
13	UNION	31607	0017X	SR 17/131 W/O SR 235	C	II	.	.	.	6250	.
13	UNION	31903	0017X	SR 17 E/O SR 131 (S UNION RD)	C	II	.	.	.	9700	.
13	UNION	31908	0017X	SR 17/131/235 NW/O SR 131 (S UNION RD)	C	II	.	.	.	8060	.
13	UNION	33007	0017X	SR 17/235 W/O SR 235	C	II	.	.	.	7600	.
13	UNION	68303	0017X	SR 17 E/O IR 1403 (PAYSON RD)	C	II	.	.	.	7710	.
13	UNION	67400	00323	IR 323 (SKIDMORE) @BR# 0578 (MEDOMAK RV)	C	I	.	.	.	90	.
13	UNION	33005	00355	IR 355 (WOTTON MILL RD) S/O SR 17	C	I	.	.	.	750	.
13	UNION	31208	00375	IR 375 (SHEPARD HILL RD) NW/O IR 374	C	I	.	.	.	530	.
13	UNION	31305	00381	IR 381 (CLARRY HILL RD) S/O SR 17	M	I	.	.	.	430	460
13	UNION	31308	00381	IR 381 (N UNION RD) NW/O SR 17	C	I	.	.	.	690	.
13	UNION	31601	00396	IR 396 (E SENNEBEC RD) N/O SR 17/131	C	II	.	.	.	1480	.
13	UNION	39507	00408	IR 408(MILLER RD) W/O IR355(WOTTON MILL)	M	II	90
13	UNION	33106	00470	IR 470 (MIDDLE RD) SW/O SR 131	C	I	.	.	.	530	.
13	UNION	31907	01102	IR 1102 (COMMON RD) W/O SR 131 (S UNION)	C	I	.	.	.	1720	.
13	UNION	67604	01102	IR 1102 (COMMON) SE/O IR 652(FAIRGROUND)	C	I	.	.	.	1550	.
13	UNION	31401	0131X	SR 131 (W SENNEBEC RD) N/O SR 17	C	I	.	.	.	2500	.
13	UNION	31904	0131X	SR 131 (S UNION RD) SE/O IR 1102(COMMON)	C	II	.	.	.	2160	.
13	UNION	33105	0131X	SR 131(S UNION RD) S/O IR 470(MIDDLE RD)	C	II	.	.	.	1590	.
13	UNION	31605	0235X	SR 235 S/O SR 17/131 (W JCT)	C	I	.	.	.	1190	.

2006 Maine Transportation Count Book

County

Knox

TOWN	STATION	ROAD	LOCATION	TYPE	GROUP	AADT02	AADT03	AADT04	AADT05	AADT06
UNION	31705	0235X	SR 235 S/O IR 1102 (COMMON RD)	C	II	.	.	.	2070	.
UNION	32901	0235X	SR 235 N/O IR 967 (LERMOND LN)	C	II	.	.	.	870	.
UNION	33001	0235X	SR 235 N/O SR 17 (E JCT)	C	II	.	.	.	920	.
WARREN	38503		(PW)MONTGOMERY AVE E/O SR 131(OYSTER RV)	C	I	.	.	.	100	.
WARREN	33604	0001X	US 1(ATLANTIC HWY) SE/O SR 90(CAMDEN RD)	C	II	.	.	.	7850	.
WARREN	33608	0001X	US 1(ATLANTIC HWY) NW/O SR 90(CAMDEN RD)	C	II	.	.	.	11840	.
WARREN	33808	0001X	US 1 NW/O IR 1259 (PW)	C	II	.	.	.	9180	.
WARREN	34404	0001X	US 1 SE/O SR 97	C	II	.	.	.	9260	.
WARREN	34408	0001X	US 1 NW/O SR 97	C	II	.	.	.	8840	.
WARREN	33305	00333	IR 333 (WESTERN RD) S/O SR 235	C	I	.	.	.	560	.
WARREN	33501	00333	IR 333 (WESTERN RD) N/O SR 90	C	I	.	.	.	2240	.
WARREN	33701	00333	IR 333 (WESTERN RD) N/O IR 1011(MAIN ST)	C	I	.	.	.	2380	.
WARREN	64704	00333	IR 333 (WESTERN RD) SE/O IR 398	C	I	.	.	.	1700	.
WARREN	33904	00398	IR 398 (OLD AUGUSTA RD) SE/O SR 235	C	I	.	.	.	1010	.
WARREN	33908	00398	IR 398 (OLD AUGUSTA RD) NW/O SR 235	C	I	750	.	.	750	.
WARREN	33401	00407	IR 407(MIDDLE RD) N/O IR 333(WESTERN RD)	C	I	.	.	.	510	.
WARREN	64801	00409	IR 409 (N POND RD) N/O US 1	C	I	.	.	.	400	.
WARREN	38708	00414	IR 414 (UNION ST) NW/O IR 1011(MAIN ST)	C	I	.	.	.	330	.
WARREN	38301	00421	IR 421 (MTN RD) N/O SR 90 (CAMDEN ST)	C	I	.	.	.	170	.
WARREN	38304	00421	IR 421 (BEECHWOOD ST) SE/O SR 90(CAMDEN)	C	I	.	.	.	940	.
WARREN	62301	00423	IR 423 (BILLINGS RD) N/O SR 90 (CAMDEN)	C	I	.	.	.	50	.
WARREN	62305	00423	IR 423 (KEATING RD) S/O SR 90 (CAMDEN)	C	I	.	.	.	570	.
WARREN	64805	00427	IR 427 (FINNTOWN RD) S/O US 1	C	II	.	.	.	950	.
WARREN	34604	00493	IR 493 (SPEAR MILL RD) SE/O SR 97	C	II	560	.	.	660	.
WARREN	38704	00748	IR 748 (RIVERSIDE DR) SE/O IR 1011(MAIN)	C	I	.	.	.	140	.
WARREN	33602	0090X	SR 90(CAMDEN RD) NE/O US 1(ATLANTIC HWY)	C	II	.	.	.	4610	.
WARREN	38302	0090X	SR 90 (CAMDEN ST) NE/O IR 421 (MTN RD)	C	II	.	.	.	5770	.
WARREN	62302	0090X	SR 90 (CAMDEN ST) NE/O IR 423 (BILLINGS)	C	II	.	.	.	6190	.
WARREN	67002	0090X	SR 90 (CAMDEN RD) NE/O SR 131(OYSTER RV)	C	II	.	.	.	5870	.
WARREN	34405	0097X	SR 97 S/O US 1	C	II	.	.	.	2790	.
WARREN	34606	0097X	SR 97 SW/O IR 493 (SPEAR MILL RD)	C	II	.	.	.	2040	.
WARREN	34207	01010	IR 1010 (POWDER MILL RD) W/O SR 131	C	I	.	.	.	150	.
WARREN	33703	01011	IR 1011 (MAIN ST) E/O IR 333(WESTERN RD)	C	I	.	.	.	880	.
WARREN	33706	01011	IR 1011(MAIN ST) SW/O IR 333(WESTERN RD)	C	II	.	.	.	2580	.

2006 Maine Transportation Count Book

Knox

	TOWN	STATION	ROAD	LOCATION	TYPE	GROUP	AADT02	AADT03	AADT04	AADT05	AADT06
13	WARREN	38507	01011	IR 1011 (MAIN ST) W/O SR 131 (OYSTER RV)	C	I	.	.	.	710	.
13	WARREN	38707	01011	IR 1011 (MAIN ST) W/O IR 414 @ BR# 3612	C	I	.	.	.	840	.
13	WARREN	34201	0131X	SR 131 N/O IR 1010 (POWDER MILL RD)	C	II	.	.	.	2380	.
13	WARREN	38504	0131X	SR 131 (OYSTER RV RD) SE/O IR 1011(MAIN)	C	I+II	.	.	.	2500	.
13	WARREN	67004	0131X	SR 131 (OYSTER RV RD) SE/O SR 90(CAMDEN)	C	I+II	.	.	.	2470	.
13	WARREN	67008	0131X	SR 131 (OYSTER RV RD) NW/O SR 90(CAMDEN)	C	II	.	.	.	2790	.
13	WARREN	67708	0131X	SR 131 NW/O IR 355 (WOTTON MILL RD)	C	II	.	.	.	1380	.
13	WARREN	33302	0235X	SR 235 NE/O IR 333 (WESTERN RD)	C	II	1600	.	.	1570	.
13	WARREN	33307	0235X	SR 235 W/O IR 333 (WESTERN RD)	C	II	.	.	.	1220	.
13	WARREN	33906	0235X	SR 235 SW/O IR 398 (OLD AUGUSTA RD)	C	II	1250	.	.	1580	.
13	WASHINGTON	30103	0017X	SR 17 E/O IR 533 (VALLEY RD)	C	II	5200	.	.	4330	.
13	WASHINGTON	30107	0017X	SR 17 W/O SR 206	C	II	5040	.	.	4300	.
13	WASHINGTON	30503	0017X	SR 17 E/O SR 220	C	I	6040	.	.	5720	.
13	WASHINGTON	30607	0017X	SR 17 W/O IR 3003 (NELSON RIDGE SOUTH)	C	II	5640	.	.	4790	.
13	WASHINGTON	30201	00305	IR 305 (YOUNGS HILL RD) N/O SR 105	C	I	390	.	.	430	.
13	WASHINGTON	30206	00305	IR 305 (VANNER RD) SW/O SR 105	C	I	450	.	.	500	.
13	WASHINGTON	32005	00305	IR 305 (HOPKINS RD) S/O SR 17	C	II	230	.	.	260	.
13	WASHINGTON	32604	00315	IR 315 (FITCH RD) SE/O SR 17 @ BR# 0576	C	II	70	.	.	100	.
13	WASHINGTON	30803	00318	IR 318 (CALDERWOOD DR) E/O SR 220	C	I	.	.	.	260	.
13	WASHINGTON	30904	00375	IR 375(OLD UNION) SE/O IR 641(BILL LUCE)	C	I	.	.	.	500	.
13	WASHINGTON	30903	00641	IR 641 (BILL LUCE) E/O IR 375(OLD UNION)	C	I	420	.	.	400	.
13	WASHINGTON	30707	0105X	SR 105 W/O SR 220	C	II	850
13	WASHINGTON	30901	0105X	SR 105/220 N/O IR 641 (OLD UNION RD)	C	I	1160	.	.	1360	.
13	WASHINGTON	34304	0105X	SR 105 SE/O IR 637 (BILLING LN)(PW)W JCT	C	I	.	.	.	590	.
13	WASHINGTON	37501	0105X	SR 105 N/O SR 206	C	I	570	.	.	560	.
13	WASHINGTON	37503	0105X	SR 105 E/O SR 206	C	I	330	.	.	300	.
13	WASHINGTON	43007	0126X	SR 126 W/O SR 220	C	II	1060	.	.	850	.
13	WASHINGTON	30105	0206X	IR 533 (VALLEY RD) S/O SR 17	C	II	210	.	.	260	.
13	WASHINGTON	37505	0206X	SR 206 S/O SR 105	C	II	530	.	.	560	.
13	WASHINGTON	30505	0220X	SR 220 S/O SR 17	C	II	1950	.	.	1910	.
13	WASHINGTON	30801	0220X	SR 220 N/O IR 318 (CALDERWOOD DR)	C	II	1520	.	.	1540	.
13	WASHINGTON	43005	0220X	SR 220 S/O SR 126	C	II	1310	.	.	1420	.