

Traffic Volume Counts 2006 Annual Report



MaineDOT

**Data collected and published by the
State of Maine**

**Department of Transportation
Traffic Engineering Division**

**In cooperation with the
United States Department of Transportation
Federal Highway Administration**

TABLE of CONTENTS

Forward

Continuous Count Program

24 Hour Traffic Data Collection Program

Description of Headings, Symbols, and Abbreviations

Map of State Count Zones

Graph of 2006 Weekly Group Mean Factors

List of 2006 Weekly Group Mean Factors

List of 2006 Weekly Group Mean Factors as a Percent of AADT

Traffic Volume Counts by County, Town, and Route

FOREWORD

The Department of Transportation, Traffic Engineering Division, and Traffic Monitoring Section is responsible for the collection of all types of traffic data and maintenance of a statewide traffic volume database. The reduction and reporting of traffic volumes and vehicle classification data are accomplished through two types of count programs. They are as follows:

CONTINUOUS COUNT PROGRAM

Traffic volumes are monitored on a continuous year round basis at forty-three permanent recorder sites located on major highways throughout the State. These hourly counts are collected to produce an average weekday figure, a weekly average day, a monthly average day, and a monthly average weekday. This information is compiled to develop an Annual Average Daily Traffic (AADT) figure for each location. The AADT is computed from the average of the weekly average day totals for the year.

The increasing demand to determine the types of vehicles (e.g. passenger cars, single-unit trucks, and semi's) traveling Maine's highways has prompted the development of a Continuous Classification Program. Currently, the department has eleven locations along routed highways that collect data based on thirteen categories as defined by the Federal Highway Administration. An AADT is computed based on the total volume as well as summary data for individual vehicle types. Future plans include the installation of additional sites statewide over the next several years.

24 HOUR TRAFFIC DATA COLLECTION PROGRAM

Between April 1st and November 15th of each year, 24 hour traffic counts (i.e., coverage counts) are gathered to monitor traffic flow and changes in traffic patterns. These counts are generally taken at intersections with major routes and/or other significant roads, Compact Urban Lines (CUL), or Town Lines (TL), or in coordination with ongoing projects or special traffic studies for the Department.

Additionally, 24-hour vehicle classification counts are performed in conjunction with the coverage counts to provide a comprehensive view of traffic along the routed highways.

The State is divided into three count zones:

ZONE I : Southwestern Maine to western Penobscot Bay region. This zone includes all of York, Cumberland, Sagadahoc, Lincoln, Knox, and Waldo counties, Oxford county from Albany Twp/Waterboro West & Oxford, Otisfield, as well as Poland, and Mechanic Falls in Androscoggin county.

ZONE II : Western/Central Maine and eastern Penobscot Bay region. This zone includes all of Androscoggin except Poland, and Mechanic Falls, Franklin, Kennebec counties, the remainder of Oxford county, Somerset county from Bingham south plus between Flagstaff Lake area and Kennebec River, southern Penobscot county, and western Hancock county.

ZONE III : Northern and eastern Maine. This zone includes all of Aroostook, Piscataquis, Washington counties, northern and southeastern Hancock county, Penobscot county from Lagrange north, and the remainder of Somerset county.

These zones are counted on a five year cycle: Zones I and II are counted twice and Zone III once during each five year period. The coverage count program also consists of the “Special Counts” taken each year to satisfy Departmental needs, local requests, and Federal requirements. These include the annual collection of data for the State’s four urbanized areas (BACTS, KACTS, ATRC, and PACTS), Interstate System counts, and data collected from the various traffic studies conducted throughout the year. The 2006 Program included 4361 counts accomplished.

Once the AADT’s have been computed for all of the permanent recorder locations, weekly factors for each station are computed by dividing the AADT by each average weekly figure. Those stations which exhibit similar traffic patterns are assembled and placed into one of three groups:

URBAN : Roadways which carry commuter traffic and exhibit little seasonal change in traffic volumes.

ARTERIAL : Roadways which carry commuter traffic but exhibit moderate seasonal changes in traffic volumes.

RECREATIONAL : Roadways which are heavily influenced by seasonal traffic.

Within each of the three groups, a factor for each week is computed by averaging the weekly factors from each station within the group.

The 2006 Weekly Group Mean Factors were developed by averaging the Weekly Group Mean Factor for 2003, 2004 and 2005. The following pages show the graph of the 2006 Weekly Group Mean Factors, a list of these factors, and the 2006 Weekly Group Mean Factor as a percent of the AADT.

The 24-hour raw data may now be grouped and assigned a factor to produce an AADT. Growth factors for expanding traffic in uncounted zones are developed utilizing data from the permanent recorders and comparing it to the data from the previous year.

The updated AADT's are entered into the Maine Department of Transportation's database to be used by various Departmental employees.

DESCRIPTION of HEADINGS, SYMBOLS, AND ABBREVIATIONS

The following is a description of the column headings, symbols, and abbreviations used for the Coverage Count Section.

TOWN The town in which a count was taken

ROUTE The road or highway on which the count was taken.

Non-Interstate Highways and Roads

---- X indicates a Routed Highway

0196X = SR 196 0001X = US Route 1

---- A or --- B indicates an Alternate Routed Highway

0001A = US Route 1A 0009B = SR 9B

---- C indicates a Business Route

0001C = Business US Route 1, 1A, or 1B

0025C = Business SR 25

Just a number with no letter OR no numbers or letters indicates a non-routed highway

= Pine Hill Road 00001 = Hubbard Road

01414 = IR 1414 00991 = IR 991 (Biddeford Road)

Interstate System

---- X indicates Northbound or Eastbound

0095X = I-95 Northbound

0395X = I-395 Eastbound

---- S indicates Southbound

0095S = I-95 Southbound

---- W indicates Westbound

0395W = I-395 Westbound

LOCATION

A description of where the count was taken.

APP = Approach

ART = Arterial

AVE = Avenue

BK = Brook

BLVD = Boulevard

BR = Bridge

CIR = Circle

CL = County Line

CNR = Corner

CONN = Connector

CTR = Center

CUL = Compact Urban Line

CWY = Cause way

CV = Cove

DR = Drive

EB = Eastbound

ENT = Entrance

FL=Fall

FLS=Falls

FT = Fort

HTS = Heights

HWY = Highway

INT'L = International

IR = Inventory Road

LG = Long

LK = Lake

LN = Lane

LWR = Lower

MEM = Memorial

MT = Mount

MTN = Mountain

NB = Northbound

NH = New Hampshire

OW = One Way

PD = Pond

PK = Park

PKWY = Park Way

PL = Place

PT = Point

PW = Private Way

PZ = Plaza

RD = Road

RDG = Ridge

RMP = Ramp

RR = Railroad

RV = River

SB = Southbound

SL = State Line

SQ = Square

SR = State Route

ST = Street

STA = Station

STR = Stream

TER = Terrace

TL = Town Line

TPK = Turnpike

TR = Trail

UPR = Upper

US = United States Route

WB = Westbound

N/O, NE/O, E/O, etc. = North of, Northeast of, East of, etc.

TYPE

Category for each count taken.

- A Permanent Recorder Count
- B BACTS Count
- C Coverage Count
- I Interstate Count
- K KACTS Count
- L ATRC Count (Formerly LACTS)
- M Municipal, Town, Regional Count
- P PACTS Count
- S Special Count
- T Turning Movement Count
- Z Speed Count

GROUP

The factor group assigned to the location.

- I Urban Group II Arterial Group
- III Recreational Group ATR Permanent Recorder Controlled Group

AADT

Annual Average Daily Traffic

2006
WEEKLY GROUP MEAN FACTORS
AVERAGE: 2003, 2004, 2005

			Month	Urban	Arterial	recreation	Group	Group	Group	Year
Month	Start Date	Dates	Week #	Group I	Group II	Group III	I + II	II + III	I + III	Week #
Jan/Feb	(1)	2,3,4,5,6	1	1.06	1.14	1.39	1.10	1.27	1.23	1
	(8)	9,10,11,1	2	1.08	1.18	1.42	1.13	1.30	1.25	2
	(15)	16,17,18	3	1.07	1.17	1.42	1.12	1.30	1.25	3
	(22)	23,24,25	4	1.06	1.16	1.42	1.11	1.29	1.24	4
	(29)	30,31,1,2	5	1.04	1.14	1.36	1.09	1.25	1.20	5
Feb/Mar	(5)	6,7,8,9,1	1	1.07	1.17	1.41	1.12	1.29	1.24	6
	(12)	13,14,15	2	1.03	1.09	1.35	1.06	1.22	1.19	7
	(19)	20,21,22	3	1.02	1.09	1.31	1.06	1.20	1.17	8
	(26)	27,28,1,2	4	1.07	1.16	1.38	1.12	1.27	1.23	9
March	(5)	6,7,8,9,1	1	1.05	1.13	1.36	1.09	1.25	1.21	10
	(12)	13,14,15	2	1.01	1.09	1.30	1.05	1.20	1.16	11
	(19)	20,21,22	3	1.00	1.08	1.27	1.04	1.18	1.14	12
	(26)	27,28,29	4	1.01	1.09	1.29	1.05	1.19	1.15	13
April/May	(2)	3,4,5,6,7	1	0.98	1.07	1.25	1.03	1.16	1.12	14
	(9)	10,11,12	2	0.97	1.05	1.19	1.01	1.12	1.08	15
	(16)	17,18,19	3	0.97	1.03	1.12	1.00	1.08	1.05	16
	(23)	24,25,26	4	0.96	1.04	1.13	1.00	1.09	1.05	17
	(30)	1,2,3,4,5	5	0.93	1.00	1.09	0.97	1.05	1.01	18
May/Jun	(7)	8,9,10,11	1	0.92	0.97	1.05	0.95	1.01	0.99	19
	(14)	15,16,17	2	0.92	0.95	0.99	0.94	0.97	0.96	20
	(21)	22,23,24	3	0.93	0.96	1.00	0.95	0.98	0.97	21
	(28)	29,30,31	4	0.90	0.94	0.94	0.92	0.94	0.92	22
June	(4)	5,6,7,8,9	1	0.90	0.93	0.91	0.92	0.92	0.91	23

	(11)	12,13,14	2	0.90	0.90	0.87	0.90	0.89	0.89	24
	(18)	19,20,21	3	0.88	0.88	0.78	0.88	0.83	0.83	25
	(25)	26,27,28	4	0.86	0.83	0.73	0.85	0.78	0.80	26
Jul/Aug	(2)	3,4,5,6,7	1	0.86	0.82	0.70	0.84	0.76	0.78	27
	(9)	10,11,12	2	0.87	0.84	0.72	0.86	0.78	0.80	28
	(16)	17,18,19	3	0.87	0.83	0.69	0.85	0.76	0.78	29
	(23)	24,25,26	4	0.85	0.79	0.67	0.82	0.73	0.76	30
	(30)	31,1,2,3,	5	0.84	0.78	0.66	0.81	0.72	0.75	31
Aug/Sep	(6)	7,8,9,10,	1	0.85	0.80	0.67	0.83	0.74	0.76	32
	(13)	14,15,16	2	0.85	0.81	0.68	0.83	0.75	0.77	33
	(20)	21,22,23	3	0.88	0.83	0.72	0.86	0.78	0.80	34
	(27)	28,29,30	4	0.90	0.88	0.84	0.89	0.86	0.87	35
Septemb	(3)	4,5,6,7,8	1	0.92	0.91	0.88	0.92	0.90	0.90	36
	(10)	11,12,13	2	0.93	0.92	0.90	0.93	0.91	0.92	37
	(17)	18,19,20	3	0.93	0.92	0.93	0.93	0.93	0.93	38
	(24)	25,26,27	4	0.94	0.91	0.96	0.93	0.94	0.95	39
Oct/Nov	(1)	2,3,4,5,6	1	0.93	0.89	0.91	0.91	0.90	0.92	40
	(8)	9,10,11,1	2	0.94	0.92	0.98	0.93	0.95	0.96	41
	(15)	16,17,18	3	0.97	1.00	1.07	0.99	1.04	1.02	42
	(22)	23,24,25	4	0.98	1.03	1.15	1.01	1.09	1.07	43
	(29)	30,31,1,2	5	0.97	1.02	1.17	1.00	1.10	1.07	44
Nov/Dec	(5)	6,7,8,9,1	1	0.98	1.01	1.18	1.00	1.10	1.08	45
	(12)	13,14,15	2	0.99	1.02	1.21	1.01	1.12	1.10	46
	(19)	20,21,22	3	0.95	0.94	1.16	0.95	1.05	1.06	47
	(26)	27,28,29	4	1.00	1.07	1.24	1.04	1.16	1.12	48
Decembe	(3)	4,5,6,7,8	1	1.02	1.10	1.30	1.06	1.20	1.16	49
	(10)	11,12,13	2	1.02	1.11	1.30	1.07	1.21	1.16	50
	(17)	18,19,20	3	0.96	1.00	1.21	0.98	1.11	1.09	51
	(24)	25,26,27	4	1.04	1.07	1.24	1.06	1.16	1.14	52

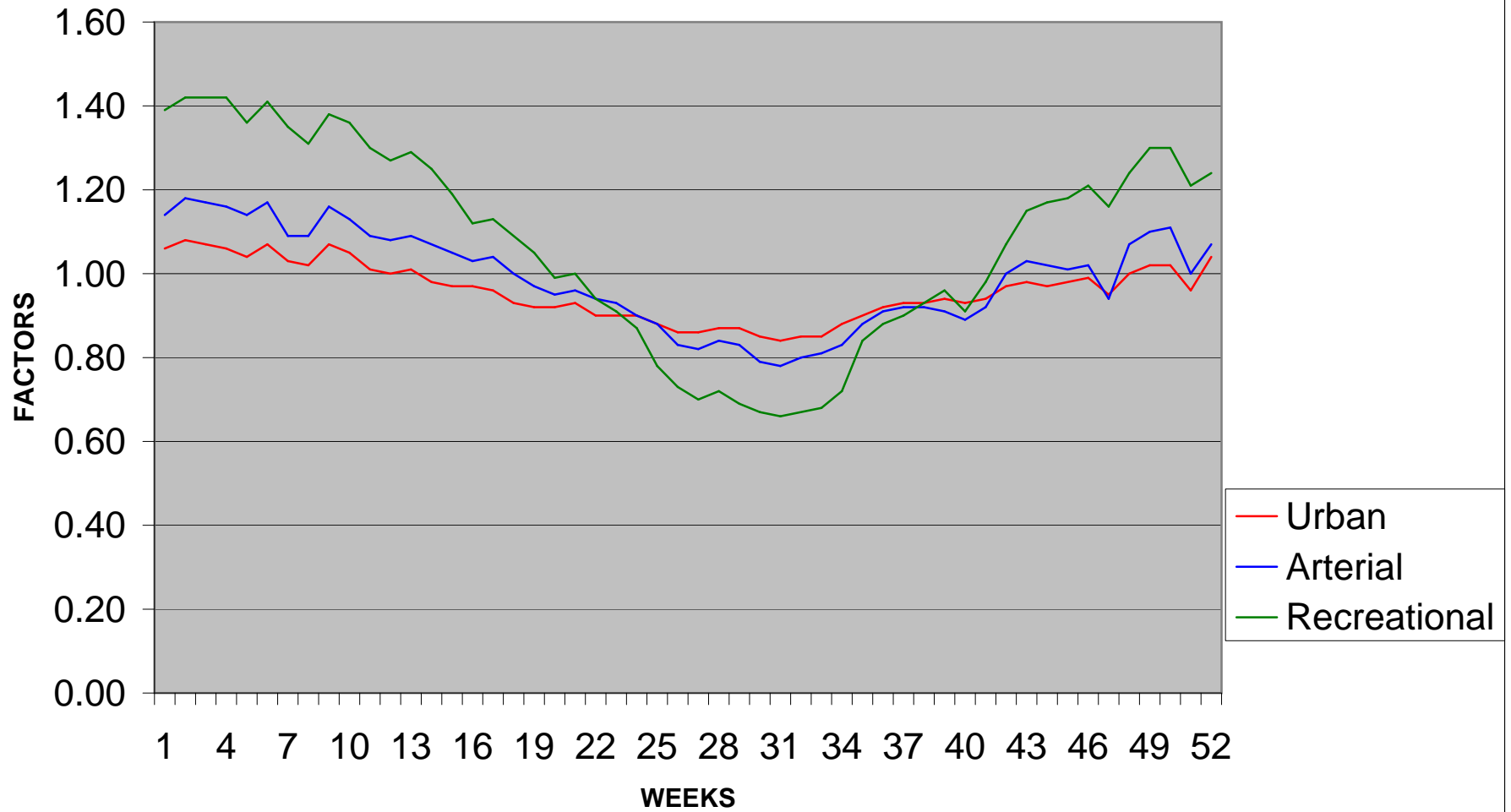
2006
WEEKLY GROUP MEAN FACTORS
AVERAGE: 2003, 2004, 2005
AS PERCENT OF AADT

			Month	Urban	Arterial	recreation	Group	Group	Group	Year
Month	Start Date	Dates	Week #	Group I	Group II	Group III	I + II	II + III	I + III	Week #
Jan/Feb	(1)	2,3,4,5,6	1	94.34	87.72	71.94	90.91	78.74	81.30	1
	(8)	9,10,11,1	2	92.59	84.75	70.42	88.50	76.92	80.00	2
	(15)	16,17,18	3	93.46	85.47	70.42	89.29	76.92	80.00	3
	(22)	23,24,25	4	94.34	86.21	70.42	90.09	77.52	80.65	4
	(29)	30,31,1,2	5	96.15	87.72	73.53	91.74	80.00	83.33	5
Feb/Mar	(5)	6,7,8,9,1	1	93.46	85.47	70.92	89.29	77.52	80.65	6
	(12)	13,14,15	2	97.09	91.74	74.07	94.34	81.97	84.03	7
	(19)	20,21,22	3	98.04	91.74	76.34	94.34	83.33	85.47	8
	(26)	27,28,1,2	4	93.46	86.21	72.46	89.29	78.74	81.30	9
March	(5)	6,7,8,9,1	1	95.24	88.50	73.53	91.74	80.00	82.64	10
	(12)	13,14,15	2	99.01	91.74	76.92	95.24	83.33	86.21	11
	(19)	20,21,22	3	100.00	92.59	78.74	96.15	84.75	87.72	12
	(26)	27,28,29	4	99.01	91.74	77.52	95.24	84.03	86.96	13
April/May	(2)	3,4,5,6,7	1	102.04	93.46	80.00	97.09	86.21	89.29	14
	(9)	10,11,12	2	103.09	95.24	84.03	99.01	89.29	92.59	15
	(16)	17,18,19	3	103.09	97.09	89.29	100.00	92.59	95.24	16
	(23)	24,25,26	4	104.17	96.15	88.50	100.00	91.74	95.24	17
	(30)	1,2,3,4,5	5	107.53	100.00	91.74	103.09	95.24	99.01	18
May/June	(7)	8,9,10,11	1	108.70	103.09	95.24	105.26	99.01	101.01	19
	(14)	15,16,17	2	108.70	105.26	101.01	106.38	103.09	104.17	20
	(21)	22,23,24	3	107.53	104.17	100.00	105.26	102.04	103.09	21
	(28)	29,30,31	4	111.11	106.38	106.38	108.70	106.38	108.70	22
June	(4)	5,6,7,8,9	1	111.11	107.53	109.89	108.70	108.70	109.89	23

	(11)	12,13,14	2	111.11	111.11	114.94	111.11	112.36	112.36	24
	(18)	19,20,21	3	113.64	113.64	128.21	113.64	120.48	120.48	25
	(25)	26,27,28	4	116.28	120.48	136.99	117.65	128.21	125.00	26
Jul/Aug	(2)	3,4,5,6,7	1	116.28	121.95	142.86	119.05	131.58	128.21	27
	(9)	10,11,12	2	114.94	119.05	138.89	116.28	128.21	125.00	28
	(16)	17,18,19	3	114.94	120.48	144.93	117.65	131.58	128.21	29
	(23)	24,25,26	4	117.65	126.58	149.25	121.95	136.99	131.58	30
	(30)	31,1,2,3,	5	119.05	128.21	151.52	123.46	138.89	133.33	31
Aug/Sep	(6)	7,8,9,10,	1	117.65	125.00	149.25	120.48	135.14	131.58	32
	(13)	14,15,16	2	117.65	123.46	147.06	120.48	133.33	129.87	33
	(20)	21,22,23	3	113.64	120.48	138.89	116.28	128.21	125.00	34
	(27)	28,29,30	4	111.11	113.64	119.05	112.36	116.28	114.94	35
Septemb	(3)	4,5,6,7,8	1	108.70	109.89	113.64	108.70	111.11	111.11	36
	(10)	11,12,13	2	107.53	108.70	111.11	107.53	109.89	108.70	37
	(17)	18,19,20	3	107.53	108.70	107.53	107.53	107.53	107.53	38
	(24)	25,26,27	4	106.38	109.89	104.17	107.53	106.38	105.26	39
Oct/Nov	(1)	2,3,4,5,6	1	107.53	112.36	109.89	109.89	111.11	108.70	40
	(8)	9,10,11,1	2	106.38	108.70	102.04	107.53	105.26	104.17	41
	(15)	16,17,18	3	103.09	100.00	93.46	101.01	96.15	98.04	42
	(22)	23,24,25	4	102.04	97.09	86.96	99.01	91.74	93.46	43
	(29)	30,31,1,2	5	103.09	98.04	85.47	100.00	90.91	93.46	44
Nov/Dec	(5)	6,7,8,9,1	1	102.04	99.01	84.75	100.00	90.91	92.59	45
	(12)	13,14,15	2	101.01	98.04	82.64	99.01	89.29	90.91	46
	(19)	20,21,22	3	105.26	106.38	86.21	105.26	95.24	94.34	47
	(26)	27,28,29	4	100.00	93.46	80.65	96.15	86.21	89.29	48
Decembe	(3)	4,5,6,7,8	1	98.04	90.91	76.92	94.34	83.33	86.21	49
	(10)	11,12,13	2	98.04	90.09	76.92	93.46	82.64	86.21	50
	(17)	18,19,20	3	104.17	100.00	82.64	102.04	90.09	91.74	51
	(24)	25,26,27	4	96.15	93.46	80.65	94.34	86.21	87.72	52

2006 WEEKLY GROUP FACTORS

AVERAGE: 2003, 2004, 2005



2006 Maine Transportation Count Book

Kennebec

TOWN	STATION	ROAD	LOCATION	TYPE	GROUP	AADT02	AADT03	AADT04	AADT05	AADT06
11 ALBION	35502	0009X	SR 9/137/US 202 NE/O IR 448 (BENTON RD)	C	II	4950
11 ALBION	35505	0009X	SR 9/137/US 202 S/O IR 1442	C	II	2400
11 ALBION	35702	0009X	SR 9/US 202 NE/O SR 137	C	II	.	1880	.	.	1980
11 ALBION	35707	0009X	SR 9/137/US 202 W/O SR 9/US 202	C	II	.	2980	.	.	2990
11 ALBION	96102	0009X	SR 9/137/US 202 NE/O IR 539 (ABBOTT RD)	C	II	.	2690	.	.	2690
11 ALBION	35507	00438	IR 438 (WINSLOW RD) W/O SR 9/137/US 202	C	I	1100
11 ALBION	35501	00448	IR 448 (BENTON RD) N/O SR 9/137/US 202	C	I	2010
11 ALBION	95904	00470	IR 470(S FREEDOM RD) SE/O IR 583(QUAKER)	C	I	.	550	.	.	560
11 ALBION	95908	00470	IR 470(S FREEDOM RD) NW/O IR 583(QUAKER)	C	I	.	540	.	.	490
11 ALBION	96004	00547	IR 547(HUSSEY RD) SE/O IR444(LIBBY HILL)	C	I	430
11 ALBION	35601	00553	IR 553 (E BENTON RD) N/O IR 448 (BENTON)	C	I	.	550	.	.	500
11 ALBION	35703	0137X	SR 137 E/O SR 9/US 202	C	I	.	1250	.	.	1460
11 AUGUSTA	01907		SLIP RAMP CUT TO WESTERN W/O AIRPORT RD	T	I	.	.	.	1880	.
11 AUGUSTA	11604	0003X	SR 3 SE/O SR 100/US 201 (RIVERSIDE DR)	S	I	.	.	.	7530	8790
11 AUGUSTA	11608	0003X	SR 3 NW/O SR 100/US 201 (RIVERSIDE DR)	S	I	.	.	.	14890	17410
11 AUGUSTA	11808	0003X	SR 3 NW/O SR 104 (W RIVER RD)	S	I	.	.	.	12760	15110
11 AUGUSTA	13403	0003X	SR 3/9/202 E/O CHURCH HILL RD @BR#2528	S	I	.	12090	11100	10610	11050
11 AUGUSTA	13407	0003X	SR 3/9/US 202 W/O CHURCH HILL RD	S	I	.	.	11180	12230	12710
11 AUGUSTA	13503	0003X	SR 3/9/US 202 E/O CROSS HILL RD	C	I	.	10480	.	.	9520
11 AUGUSTA	13602	0003X	SR 3/9/US 202 NE/O WEEKS MILLS RD	S	II	.	.	.	9000	.
11 AUGUSTA	02401	0008X	SR 8/11/27 (CVC CTR DR) N/O TOWNSEND RD	S	I	.	16790	.	15180	15110
11 AUGUSTA	02405	0008X	SR 8/11/27 (CVC CTR DR) S/O TOWNSEND RD	S	I	.	17320	.	16280	16460
11 AUGUSTA	02601	0008X	SR 8/11/27/104 (STATE) N/O CHANDLER ST	S	I	.	.	.	8760	10010
11 AUGUSTA	02605	0008X	SR 8/11/27/104 (SB)(STATE) S/O CHANDLER	S	I	.	.	.	7950	.
11 AUGUSTA	03001	0008X	SR 8/11/27/104 (STATE ST) N/O BRIDGE ST	T	I	.	.	.	11160	.
11 AUGUSTA	03005	0008X	SR 8/11/27/104 (STATE ST) S/O BRIDGE ST	T	I	.	.	.	11070	.
11 AUGUSTA	04805	0008X	SR 8/11/27 (CVC CTR DR) S/O I-95 SB RMPS	S	I	.	19090	.	18490	20210
11 AUGUSTA	05401	0008X	SR 8/11/27 (MT VERNON) N/O BOND ST	S	I	.	18970	.	17690	16820
11 AUGUSTA	05405	0008X	SR 8/11/27/104 (STATE ST) S/O BOOTHBY ST	S	I	.	12520	.	11860	11450
11 AUGUSTA	06001	0008X	SR 8/11/27/104 (STATE) N/O WINTHROP ST	T	I	.	.	.	10900	.
11 AUGUSTA	06005	0008X	SR 8/11/27/104 (STATE) S/O WINTHROP ST	T	I	.	10510	.	8330	9280
11 AUGUSTA	07605	0008X	SR 8/11/27/104 (STATE ST) S/O CHURCH ST	S	I	.	13200	.	11590	11480
11 AUGUSTA	12808	0008X	SR 8/11/27(CVC CTR) NW/O OLD BELGRADE RD	S	I	.	10090	11100	9940	11350
11 AUGUSTA	13005	0008X	SR 8/11/27 (CIVIC CTR DR) S/O BOG RD	S	I	.	11890	13260	12360	12940

2006 Maine Transportation Count Book

Kennebec

TOWN	STATION	ROAD	LOCATION	TYPE	GROUP	AADT02	AADT03	AADT04	AADT05	AADT06
11 AUGUSTA	00901	0009X	SR 9/US 201/202 (BANGOR) N/O NOYES ST PL	S	I	.	25850	.	18340	18720
11 AUGUSTA	03405	0009X	SR 9 (HOSPITAL ST) S/O PIGGERY RD	C	I	.	12200	.	.	11630
11 AUGUSTA	03600	0009X	SR 9 (HOSPITAL ST) @ CHELSEA TL	C	I	10410
11 AUGUSTA	04403	0009X	SR 9/US 202 (N BELFAST AVE) E/O HICKS RD	S	I	.	.	11850	5650	.
11 AUGUSTA	06702	0009X	SR 9/US 201/202 (BANGOR) NE/O LINDEN ST	C	I	17900
11 AUGUSTA	07107	0009X	SR 9/US 202 (N BELFAST) W/O SPAULDING ST	S	I	.	12900	.	6450	6200
11 AUGUSTA	08004	0009X	SR 9/17 (STONE ST) SE/O MIDDLE ST	S	I	.	23480	.	24270	22060
11 AUGUSTA	08101	0009X	SR 9/17 (STONE ST) N/O CEDAR COURT	C	I	.	23690	.	.	22180
11 AUGUSTA	08205	0009X	SR 9 (HOSPITAL ST) S/O FIRST AVE	C	I	.	16190	.	.	14320
11 AUGUSTA	11902	0009X	SR 9/US 202 (N BELFAST) NE/O HEDGENETTLE	S	I	.	.	.	5240	5000
11 AUGUSTA	00113	0011W	SR 11/17/202(WESTERN)(WB) E/O WHITTEN RD	T	I	.	.	.	10970	.
11 AUGUSTA	00217	0011W	SR 11/17/202 (WESTERN)(WB) W/O STOREY ST	T	I	.	.	.	13260	.
11 AUGUSTA	00413	0011W	SR 11/17/202 (WESTERN)(WB) E/O ARMORY ST	T	I	.	.	.	12810	.
11 AUGUSTA	00417	0011W	SR 11/17/202 (WESTERN)(WB) W/O ARMORY ST	T	I	.	18350	.	17360	14330
11 AUGUSTA	00617	0011W	SR 11/17/202 (WESTERN)(WB) W/O SEWALL ST	T	I	.	13650	.	10420	9900
11 AUGUSTA	00717	0011W	SR 11/17/202(WESTERN)(WB) W/O ORCHARD ST	T	I	.	.	.	13560	12890
11 AUGUSTA	01913	0011W	SR 11/17/202(WESTERN)(WB) E/O AIRPT ENT	T	I	.	.	.	10490	.
11 AUGUSTA	02017	0011W	SR 11/17 (WESTERN)(WB) W/O AUGUSTA PLAZA	T	I	.	.	.	9990	.
11 AUGUSTA	06514	0011W	SR 11/17/202(WESTERN)(WB) SE/O EDISON DR	T	I	.	14920	.	12940	13890
11 AUGUSTA	06518	0011W	SR 11/17/202(WESTERN)(WB) NW/O EDISON DR	T	I	.	.	.	13100	.
11 AUGUSTA	00103	0011X	SR 11/17/202(WESTERN)(EB) E/O WHITTEN RD	T	I	.	.	.	16690	.
11 AUGUSTA	00107	0011X	SR 11/17/202(WESTERN)(EB) W/O WHITTEN RD	T	I	.	.	.	14350	.
11 AUGUSTA	00403	0011X	SR 11/17/202 (WESTERN)(EB) E/O ARMORY ST	T	I	.	.	.	13500	.
11 AUGUSTA	00407	0011X	SR 11/17(WESTERN)(EB) W/O ARMORY/MALL EN	T	I	.	18700	.	17570	14830
11 AUGUSTA	00603	0011X	SR 11/17/202 (WESTERN AVE) E/O SEWALL ST	T	I	.	.	.	23740	.
11 AUGUSTA	00607	0011X	SR 11/17/202 (WESTERN)(EB) W/O SEWALL ST	T	I	.	14640	.	12260	.
11 AUGUSTA	00703	0011X	SR 11/17/202(WESTERN)(EB) E/O ORCHARD ST	T	I	.	.	.	17380	.
11 AUGUSTA	00707	0011X	SR 11/17/202(WESTERN)(EB) W/O ORCHARD ST	T	I	.	16880	.	15190	13470
11 AUGUSTA	01903	0011X	SR 11/17/202(WESTERN)(EB) E/O AIRPRT RD	T	I	.	.	.	10720	.
11 AUGUSTA	02007	0011X	SR 11/17 (WESTERN)(EB) W/O AUGUSTA PLAZA	T	I	.	.	.	10680	.
11 AUGUSTA	03207	0011X	SR 11/17/202(WESTERN) W/O W TRAFFIC CIR	S	I	.	28750	.	21040	20040
11 AUGUSTA	03803	0011X	SR 11/17/202(WESTERN) E/O PRESCOTT RD	C	I	.	23450	.	.	21420
11 AUGUSTA	03807	0011X	SR 11/17/202(WESTERN) W/O PRESCOTT RD	C	I	20260
11 AUGUSTA	06504	0011X	SR 11/17/202(WESTERN)(EB) SE/O EDISON DR	T	I	.	14150	.	15060	13180

2006 Maine Transportation Count Book

Kennebec

TOWN	STATION	ROAD	LOCATION	TYPE	GROUP	AADT02	AADT03	AADT04	AADT05	AADT06
11 AUGUSTA	06508	0011X	SR 11/17/202(WESTERN)(EB) NW/O EDISON DR	T	I	.	.	.	12820	.
11 AUGUSTA	07003	0011X	SR 11/17/202(WESTERN AVE) E/O SHUMAN AVE	T	I	.	.	.	24900	.
11 AUGUSTA	07007	0011X	SR 11/17/202(WESTERN AVE) W/O SHUMAN AVE	T	I	.	.	.	23900	.
11 AUGUSTA	08707	0011X	SR 11/17/202 (WESTERN) W/O WESTERN AV PL	C	I	.	26490	.	.	19460
11 AUGUSTA	02303	0017X	SR 17 (EASTERN AVE) E/O SR 9 (HOSPITAL)	C	I	.	13700	.	.	12890
11 AUGUSTA	02307	0017X	SR 17(EASTERN AVE) W/O SR 9/17(STONE ST)	C	I	.	2180	.	.	1620
11 AUGUSTA	04103	0017X	SR 17 (EASTERN AVE) E/O CONY RD	T	I	.	10820	.	10670	10570
11 AUGUSTA	04107	0017X	SR 17 (EASTERN AVE) W/O CONY RD	T	I	.	12510	.	11770	11520
11 AUGUSTA	14004	0017X	SR 17 (EASTERN AVE) SE/O SPRING RD	C	I	8400
11 AUGUSTA	14008	0017X	SR 17 (EASTERN AVE) NW/O SPRING RD	S	I	.	.	.	10090	.
11 AUGUSTA	00305	0027X	SR 27/US 201 (STATE ST) S/O CAPITOL ST	T	I	.	.	.	13730	.
11 AUGUSTA	02205	0027X	SR 27/US 201 (STATE ST) S/O UNION ST	T	I	.	15570	.	13150	.
11 AUGUSTA	07201	0027X	SR 27/US 201 (STATE ST) N/O CHILD ST	T	I	.	16520	.	14040	16010
11 AUGUSTA	08301	0027X	SR 27/US 201 N/O KING ST	T	I	.	.	.	12130	.
11 AUGUSTA	08305	0027X	SR 27/US 201 (STATE ST) S/O KING ST	T	I	.	14770	.	11310	13010
11 AUGUSTA	12703	00356	SUMMERHAVEN DR E/O SANFORD RD	C	I	.	1780	.	.	2270
11 AUGUSTA	13604	00372	WEEKS MILLS RD SE/O SR 3/9/US 202	C	I	1660
11 AUGUSTA	13207	00374	STEVENS RD W/O CHURCH HILL RD	C	I	.	1010	.	.	.
11 AUGUSTA	13202	00433	CHURCH HILL RD NE/O STEVENS RD	C	I	.	920	.	.	.
11 AUGUSTA	13401	00433	CHURCH HILL RD N/O SR 3/9/US 202	S	I	.	1700	.	1420	1500
11 AUGUSTA	13405	00433	CHURCH HILL RD S/O SR 3/9/US 202	S	I	.	3370	3320	4820	4790
11 AUGUSTA	14002	00435	SPRING RD NE/O SR 17 (EASTERN AVE)	C	I	.	1440	.	.	1510
11 AUGUSTA	14006	00435	SPRING RD SW/O SR 17 (EASTERN AVE)	C	I	.	2510	.	.	2510
11 AUGUSTA	13502	00439	CROSS HILL RD NE/O SR 3/9/US 202	C	I	.	690	.	.	560
11 AUGUSTA	13701	00439	BOLTON HILL RD N/O SR 105 (S BELFAST AV)	C	I	.	1050	.	.	970
11 AUGUSTA	13902	00449	WARD RD NE/O SR 105 (S BELFAST AVE)	C	I	480
11 AUGUSTA	53202	0095S	I-95 (SB) N/O ON RAMP FROM CIVIC CTR(SB)	I	ATR52104	.	10250	.	12700	.
11 AUGUSTA	53204	0095S	I-95 (SB) N/O OFF RAMP TO CIVIC CTR DR	I	ATR52104	.	13260	.	16560	.
11 AUGUSTA	53302	0095S	I-95 (SB) N/O ON RAMP FROM WESTERN AVE	I	ATR52104	.	9800	.	11370	.
11 AUGUSTA	53304	0095S	I-95 (SB) N/O OFFRAMP TO WESTERN AVE(EB)	I	ATR52104	.	12270	.	13260	.
11 AUGUSTA	53306	0095S	I-95 (SB) N/O OFFRAMP TO WESTERN AVE(WB)	I	ATR52104	.	14800	.	16490	.
11 AUGUSTA	53314	0095S	I-95 (SB) S/O ON RAMP FROM WESTERN AVE	I	ATR52104	.	14540	.	15030	.
11 AUGUSTA	55102	0095S	I-95 (SB) N/O ON RAMP FROM SR 3	I	ATR52104	.	.	.	12560	.
11 AUGUSTA	55104	0095S	I-95 (SB) N/O OFF RAMP TO SR 3	I	ATR52104	.	.	.	13850	.

County **2006 Maine Transportation Count Book**

Kennebec

TOWN	STATION	ROAD	LOCATION	TYPE	GROUP	AADT02	AADT03	AADT04	AADT05	AADT06
11 AUGUSTA	53201	0095X	I-95 (NB) N/O OFF RAMP TO CIVIC CTR (SB)	I	ATR52103	.	11930	.	13770	.
11 AUGUSTA	53203	0095X	I-95 (NB) N/O OFF RAMP TO CIVIC CTR (NB)	I	ATR52103	.	9940	.	12130	.
11 AUGUSTA	53205	0095X	I-95 (NB) N/O ONRAMP FROM CIVIC CTR (NB)	I	ATR52103	.	13300	.	16270	.
11 AUGUSTA	53301	0095X	I-95 (NB) N/O OFF RAMP TO WESTERN AVE	I	ATR52103	.	9500	.	10990	.
11 AUGUSTA	53303	0095X	I-95 (NB) N/O ON RAMP FROM WESTERN AVE	I	ATR52103	.	14300	.	16070	.
11 AUGUSTA	53317	0095X	I-95 (NB) S/O OFFRAMP TO WESTERN AVE	I	ATR52103	.	14780	.	14960	.
11 AUGUSTA	55101	0095X	I-95 (NB) N/O OFF RAMP TO SR 3	I	ATR52103	.	.	.	12230	.
11 AUGUSTA	55103	0095X	I-95 (NB) N/O ON RAMP FROM SR 3	I	ATR52103	.	.	.	13430	.
11 AUGUSTA	00500	0100X	SR 17/100/US 201/202 ON MEMORIAL BRIDGE	C	I	.	29910	.	.	22370
11 AUGUSTA	00802	0100X	SR 100/US 201 (RIVERSIDE) NE/O LAJOIE ST	S	I	.	9290	.	9010	9360
11 AUGUSTA	01100	0100X	SR 100/US 201(RIVERSIDE) @ VASSALBORO TL	S	I	.	6060	.	5200	5680
11 AUGUSTA	04301	0100X	SR 100/US 201 (BANGOR ST) N/O LOCKE ST	S	I	.	.	.	11990	.
11 AUGUSTA	04701	0100X	SR 100/US201(RIVERSIDE) N/O HIGHLAND AVE	S	I	.	12130	12470	11440	11790
11 AUGUSTA	10901	0100X	SR 100/US 201 (BANGOR ST) N/O PRINCE ST	S	I	.	.	.	12280	.
11 AUGUSTA	11005	0100X	SR 100/US 201 (BANGOR) S/O NEWLAND AVE	S	I	.	.	.	12060	12000
11 AUGUSTA	11602	0100X	SR 100/US 201 (RIVERSIDE) NE/O SR 3	S	I	.	.	.	10490	10780
11 AUGUSTA	05001	0104X	SR 104 (W RIVER RD) N/O OLD BELGRADE RD	S	I	.	3330	.	5530	6220
11 AUGUSTA	05101	0104X	SR 104 (W RIVER RD) N/O TOWNSEND RD	S	I	.	.	7740	7090	6930
11 AUGUSTA	05105	0104X	SR 104 (NORTHERN AVE) S/O TOWNSEND RD	S	I	.	12630	11980	7960	7440
11 AUGUSTA	05403	0104X	BOND ST E/O SR 8/11/27 (MT VERNON)	S	I	.	9790	.	7890	7280
11 AUGUSTA	07708	0104X	SR 104 (NORTHERN AVE) NW/O WASHINGTON ST	C	I	.	12220	.	.	7410
11 AUGUSTA	07808	0104X	SR 104 (NORTHERN AVE) NW/O OXFORD ST	C	I	.	11110	.	.	7100
11 AUGUSTA	07905	0104X	SR 104 (NORTHERN AVE) S/O MONROE ST	C	I	.	11510	.	.	7380
11 AUGUSTA	10406	0104X	SR 104 (W RIVER RD) SW/O PATRICK ST	S	I	.	2140	.	2410	2410
11 AUGUSTA	11806	0104X	SR 104 (W RIVER RD) SW/O SR 3	S	I	.	.	.	5260	6670
11 AUGUSTA	13100	0104X	SR 104 (W RIVER RD) @ SIDNEY TL	S	I	.	.	.	1500	1540
11 AUGUSTA	01003	0105X	SR 105 (CONY ST) E/O EAST TRAFFIC CIRCLE	S	I	.	7340	.	7140	6010
11 AUGUSTA	01303	0105X	SR 105 (S BELFAST AVE) E/O CONY RD	C	I	3080
11 AUGUSTA	01307	0105X	SR 105 (S BELFAST AVE) W/O CONY RD	C	I	2880
11 AUGUSTA	02102	0105X	SR 105 (S BELFAST AVE) NE/O CONY ST EXT	C	I	.	3670	.	.	2940
11 AUGUSTA	07403	0105X	SR 105 (CONY ST) E/O VILES ST	C	I	.	6000	.	.	5280
11 AUGUSTA	13803	0105X	SR 105 (S BELFAST AVE) E/O SPRING RD	C	I	2040
11 AUGUSTA	13903	0105X	SR 105 (S BELFAST AVE) E/O WARD RD @ TL	C	I	.	1530	.	.	1300
11 AUGUSTA	12902	02281	BOG RD NE/O OLD BELGRADE RD	S	I	.	2230	2650	2020	2110

2006 Maine Transportation Count Book

Kennebec

TOWN	STATION	ROAD	LOCATION	TYPE	GROUP	AADT02	AADT03	AADT04	AADT05	AADT06
11 AUGUSTA	12906	02281	BOG RD SW/O OLD BELGRADE RD	S	I	.	.	3160	2610	.
11 AUGUSTA	12904	02283	OLD BELGRADE RD SE/O BOG RD	S	I	.	3630	3300	3000	3010
11 AUGUSTA	12907	02283	OLD BELGRADE RD W/O BOG RD	S	I	.	.	.	2140	.
11 AUGUSTA	12706	03718	SANFORD RD SW/O SUMMERHAVEN DR	C	I	.	590	.	.	940
11 AUGUSTA	10500	03798	CONY RD @ CHELSEA TL	C	I	.	2070	.	.	1950
11 AUGUSTA	01901	10001	AIRPORT RD N/O MULLIKEN COURT	T	I	.	5360	.	4910	4470
11 AUGUSTA	00405	10005	ARMORY ST S/O SR 11/17/202 (WESTERN AVE)	T	I	.	7780	.	8770	7540
11 AUGUSTA	04205	10006	ARSENAL ST S/O EASTERN AVE	C	I	.	1480	.	.	.
11 AUGUSTA	08505	10006	ARSENAL ST S/O CONY ST	C	I	6110
11 AUGUSTA	01401	10015	BLAINE AVE N/O MULLIKEN COURT	C	I	.	540	.	.	510
11 AUGUSTA	05406	10018	BOOTHBY ST SW/O SR 8/11/27 (STATE ST)	S	I	.	.	.	570	.
11 AUGUSTA	03003	10025	BRIDGE ST E/O SR 8/11/27/104 (STATE ST)	T	I	.	3800	.	3250	2850
11 AUGUSTA	03007	10025	BRIDGE ST W/O SR 8/11/27/104 (STATE ST)	T	I	.	.	.	2870	2740
11 AUGUSTA	07507	10025	WINTHROP ST W/O PLEASANT ST	C	I	.	7610	.	.	6300
11 AUGUSTA	00303	10034	CAPITOL ST E/O SR 27/US 201 (STATE ST)	T	I	.	.	.	1100	.
11 AUGUSTA	00307	10034	CAPITOL ST W/O SR 27/US 201 (STATE ST)	T	I	.	7680	.	6830	8410
11 AUGUSTA	02703	10034	CAPITOL ST E/O SEWALL ST	T	I	.	.	.	6790	.
11 AUGUSTA	05503	10034	CAPITOL ST E/O ARMORY ST	C	I	.	9330	.	.	8840
11 AUGUSTA	10607	10034	CAPITOL ST W/O FEDERAL ST	T	I	.	11660	.	10210	11570
11 AUGUSTA	12503	10038	CEDAR ST E/O MIDDLE ST	C	I	320
11 AUGUSTA	12507	10038	CEDAR ST W/O MIDDLE ST	C	I	240
11 AUGUSTA	09601	10040	CHAPEL ST N/O SR 11/17/202 (WESTERN AVE)	C	I	.	1120	.	.	960
11 AUGUSTA	07203	10044	CHILD ST E/O SR 27/US 201	T	I	.	.	.	760	.
11 AUGUSTA	01305	10050	CONY RD S/O SR 105 (S BELFAST)	S	I	.	3660	3860	4630	4650
11 AUGUSTA	04101	10050	CONY RD N/O SR 17 (EASTERN AVE)	T	I	.	5000	4460	5350	6030
11 AUGUSTA	04105	10050	CONY RD S/O SR 17 (EASTERN AVE)	T	I	.	3320	.	2730	3320
11 AUGUSTA	02903	10051	CONY ST E/O WILLOW ST	C	I	.	22790	.	.	15490
11 AUGUSTA	04000	10051	CONY ST @ FATHER CURRAN BR	C	I	.	22540	.	.	14900
11 AUGUSTA	02103	10052	CONY ST EXT E/O SR 105 (S BELFAST AVE)	C	I	3080
11 AUGUSTA	04607	10052	CONY ST EXT W/O CONY RD	C	I	1760
11 AUGUSTA	07304	10052	CONY ST EXT SE/O HASKELL ST	C	I	2550
11 AUGUSTA	07308	10052	CONY ST EXT NW/O HASKELL ST	C	I	.	2420	.	.	2640
11 AUGUSTA	08103	10057	CROOKER ST E/O SR 9/17 (STONE ST)	C	I	.	310	.	.	310
11 AUGUSTA	12307	10061	CROSS ST W/O SR 9/17 (STONE ST)	C	I	100

County **2006 Maine Transportation Count Book**

Kennebec

TOWN	STATION	ROAD	LOCATION	TYPE	GROUP	AADT02	AADT03	AADT04	AADT05	AADT06
11 AUGUSTA	08601	10065	CUSHMAN ST N/O SR 11/17/202(WESTERN AVE)	C	I	.	840	.	.	720
11 AUGUSTA	12603	10066	DAVENPORT ST E/O SR 9/17 (STONE ST)	C	I	340
11 AUGUSTA	09703	10074	E CHESTNUT ST E/O ARSENAL ST	C	I	2390
11 AUGUSTA	12403	10074	E CHESTNUT ST E/O MIDDLE ST	C	I	700
11 AUGUSTA	12407	10074	E CHESTNUT ST W/O MIDDLE ST	C	I	2610
11 AUGUSTA	04203	10077	EASTERN AVE E/O ARSENAL ST	C	I	.	1760	.	.	1160
11 AUGUSTA	06506	10079	EDISON DR SW/O SR 11/17/202(WESTERN)(EB)	T	I	.	3270	.	5800	3810
11 AUGUSTA	11303	10081	ELM AVE E/O SPAULDING ST	S	I	.	.	.	80	.
11 AUGUSTA	11307	10081	ELM AVE W/O WHITE ST	S	I	.	.	.	180	.
11 AUGUSTA	10605	10088	FEDERAL ST S/O CAPITOL ST	T	I	.	.	.	150	.
11 AUGUSTA	01201	10102	FULLER RD N/O CUT TO MEADOW RD	T	I	.	330	.	240	.
11 AUGUSTA	01205	10102	FULLER RD S/O REVERSE DIRECTION CUT	T	I	.	.	.	600	.
11 AUGUSTA	01805	10104	GAGE ST S/O SWAN ST	S	I	.	1700	.	1660	1700
11 AUGUSTA	10207	10115	GLENWOOD ST W/O SR 27/US 201 (STATE ST)	C	I	.	490	.	.	510
11 AUGUSTA	02507	10119	GREEN ST (OW) W/O GROVE ST	C	I	.	530	.	.	480
11 AUGUSTA	08907	10119	GREEN ST W/O SR 8/11/27/104 (STATE ST)	C	I	.	1040	.	.	1080
11 AUGUSTA	09007	10119	GREEN ST W/O SEWALL ST	C	I	.	1070	.	.	1030
11 AUGUSTA	09303	10119	GREEN ST E/O BLAINE AVE	C	I	.	360	.	.	340
11 AUGUSTA	03706	10124	GROVE ST SW/O SWAN ST	S	I	.	5940	.	6290	6230
11 AUGUSTA	04404	10130	HICKS RD SE/O SR 9/US 202(N BELFAST AVE)	S	I	.	.	.	1050	890
11 AUGUSTA	04703	10133	HIGHLAND AVE E/O SR 100/US 201 (BANGOR)	S	I	.	.	.	220	.
11 AUGUSTA	11501	10137	HORTON ST N/O LONGWOOD AVE	S	I	.	.	.	50	.
11 AUGUSTA	10801	10143	JAMES ST N/O SR 9/US 202 (N BELFAST AVE)	S	I	.	.	.	50	.
11 AUGUSTA	08307	10154	KING ST W/O SR 27/US 201	T	I	.	.	.	870	.
11 AUGUSTA	09203	10154	KING ST E/O SEWALL ST	C	I	.	1040	.	.	900
11 AUGUSTA	03908	10162	LEIGHTON RD NW/O OLD WINTHROP RD	C	I	7410
11 AUGUSTA	05906	10162	LEIGHTON RD SW/O BOND BROOK RD @ BR#5747	C	I	.	5760	.	.	6550
11 AUGUSTA	09407	10163	LINCOLN ST W/O JOHNSON ST	C	I	.	320	.	.	280
11 AUGUSTA	09503	10163	LINCOLN ST E/O DAYTON ST	C	I	.	540	.	.	470
11 AUGUSTA	11203	10167	LONGWOOD AVE E/O WHITE ST	S	I	.	.	.	160	.
11 AUGUSTA	11207	10167	LONGWOOD AVE W/O WHITE ST	S	I	.	.	.	300	.
11 AUGUSTA	09805	10176	MAYFAIR ST S/O SR 17 (EASTERN AVE)	C	I	.	690	.	.	760
11 AUGUSTA	00701	10178	MEADOW RD N/O SR 11/17/202 (WESTERN AVE)	T	I	.	.	.	5660	.
11 AUGUSTA	01208	10178	MEADOW RD NW/O CUT TO FULLER RD	T	I	.	3940	.	4040	3680

2006 Maine Transportation Count Book

Kennebec

TOWN	STATION	ROAD	LOCATION	TYPE	GROUP	AADT02	AADT03	AADT04	AADT05	AADT06
11 AUGUSTA	08005	10180	MIDDLE ST S/O SR 9/17 (STONE ST)	C	I	.	1910	.	.	2200
11 AUGUSTA	12401	10180	MIDDLE ST N/O E CHESTNUT ST	C	I	1850
11 AUGUSTA	12405	10180	MIDDLE ST S/O E CHESTNUT ST	C	I	1380
11 AUGUSTA	12501	10180	MIDDLE ST N/O CEDAR ST	C	I	840
11 AUGUSTA	12505	10180	MIDDLE ST S/O CEDAR ST	C	I	660
11 AUGUSTA	07903	10183	MONROE ST E/O SR 104 (NORTHERN AVE)	C	I	.	630	.	.	710
11 AUGUSTA	01407	10187	MULLIKEN COURT W/O BLAINE AVE	C	I	.	310	.	.	.
11 AUGUSTA	01904	10187	MULLIKEN COURT SE/O AIRPORT RD	S	I	.	340	.	430	.
11 AUGUSTA	12203	10189	MURRAY ST E/O PEARL ST	C	I	220
11 AUGUSTA	12207	10189	MURRAY ST W/O PEARL ST	C	I	250
11 AUGUSTA	11003	10191	NEWLAND AVE E/O SR 100/US 201 (BANGOR)	S	I	.	.	.	200	.
11 AUGUSTA	11407	10191	NEWLAND AVE W/O PINEHURST ST	S	I	.	.	.	110	.
11 AUGUSTA	01501	10192	N CHESTNUT ST N/O WINTHROP ST	C	I	.	670	.	.	600
11 AUGUSTA	05008	10200	OLD BELGRADE RD NW/O SR 104 (W RIVER)	S	I	.	4520	4160	4180	3890
11 AUGUSTA	10708	10200	OLD BELGRADE RD NW/O EIGHT ROD RD @ BR	S	I	.	.	3040	2880	.
11 AUGUSTA	03903	10201	OLD WINTHROP RD E/O LEIGHTON RD @BR#5788	C	I	.	3560	.	.	3410
11 AUGUSTA	03906	10201	OLD WINTHROP RD SW/O LEIGHTON RD	C	I	.	4800	.	.	5130
11 AUGUSTA	10303	10201	OLD WINTHROP RD E/O WILDWOOD RD	S	I	3450
11 AUGUSTA	00705	10203	ORCHARD ST S/O SR 11/17/202(WESTERN AVE)	T	I	.	1520	.	2130	1280
11 AUGUSTA	12005	10205	PAGE ST S/O CAPITOL ST	T	I	.	.	.	140	.
11 AUGUSTA	07401	10209	PEARL ST N/O SR 105 (CONY ST)	C	I	560
11 AUGUSTA	12201	10209	PEARL ST N/O MURRAY ST	C	I	520
11 AUGUSTA	12205	10209	PEARL ST S/O MURRAY ST	C	I	430
11 AUGUSTA	09901	10210	PENLEY ST N/O SR 17 (EASTERN AVE)	C	I	.	130	.	.	140
11 AUGUSTA	11401	10215	PINEHURST ST N/O NEWLAND AVE	S	I	.	.	.	170	.
11 AUGUSTA	11405	10215	PINEHURST ST S/O NEWLAND AVE	S	I	.	.	.	320	.
11 AUGUSTA	03808	10220	PRESCOTT RD NW/O SR 11/17/202 (WESTERN)	C	I	.	1400	.	.	1180
11 AUGUSTA	00601	10239	SEWALL ST N/O SR 11/17/202 (WESTERN AVE)	T	I	.	5030	.	4860	3400
11 AUGUSTA	00605	10239	SEWALL ST S/O SR 11/17/202 (WESTERN AVE)	T	I	.	.	.	6650	.
11 AUGUSTA	02701	10239	SEWALL ST N/O CAPITOL ST	T	I	.	6520	.	5300	5640
11 AUGUSTA	02705	10239	SEWALL ST S/O CAPITOL ST	T	I	.	8250	.	6880	6950
11 AUGUSTA	08405	10239	SEWALL ST S/O WINTHROP ST	C	I	.	3640	.	.	2610
11 AUGUSTA	09105	10239	SEWALL ST S/O SOUTH ST @ HALLOWELL TL	C	I	.	5100	.	.	4400
11 AUGUSTA	10103	10241	SIXTH AVE E/O SR 9 (HOSPITAL ST)	C	I	.	570	.	.	570

2006 Maine Transportation Count Book

Kennebec

TOWN	STATION	ROAD	LOCATION	TYPE	GROUP	AADT02	AADT03	AADT04	AADT05	AADT06
11 AUGUSTA	01505	10243	S CHESTNUT ST S/O WINTHROP ST	C	I	.	1220	.	.	910
11 AUGUSTA	02002	10243	S CHESTNUT ST NE/O SR 11/17/100/202 (WB)	T	I	.	830	.	520	710
11 AUGUSTA	09103	10246	SOUTH ST E/O SEWALL ST	C	I	.	360	.	.	.
11 AUGUSTA	07108	10247	SPAULDING ST NW/O SR 9/US 202(N BELFAST)	S	I	.	.	.	230	.
11 AUGUSTA	00205	10256	STOREY ST S/O SR 11/17/202(WESTERN)(EB)	T	I	.	.	.	860	.
11 AUGUSTA	02403	10266	TOWNSEND RD E/O SR 8/11/27 (CVC CTR DR)	S	I	.	7280	.	8160	8080
11 AUGUSTA	05108	10266	TOWNSEND RD NW/O SR 104 (NORTHERN AVE)	S	I	.	8710	8390	6610	6590
11 AUGUSTA	02203	10271	UNION ST E/O SR 27/US 201 (STATE ST)	T	I	.	2500	.	1940	.
11 AUGUSTA	07701	10288	WASHINGTON ST N/O SR 104 (NORTHERN AVE)	C	I	.	1610	.	.	.
11 AUGUSTA	12101	10288	WASHINGTON ST N/O WASHINGTON ST PL	C	I	1510
11 AUGUSTA	02801	10290	WATER ST N/O BRIDGE ST	C	I	.	21590	.	.	12900
11 AUGUSTA	02805	10290	WATER ST (OW) S/O BRIDGE ST	C	I	.	7420	.	.	6310
11 AUGUSTA	11201	10298	WHITE ST N/O LONGWOOD AVE	S	I	.	.	.	60	.
11 AUGUSTA	11205	10298	WHITE ST S/O LONGWOOD AVE	S	I	.	.	.	60	.
11 AUGUSTA	11301	10298	WHITE ST N/O ELM AVE	S	I	.	.	.	100	.
11 AUGUSTA	00105	10299	WHITTEN RD S/O SR 11/17/202(WESTERN AVE)	T	I	.	11780	.	11380	.
11 AUGUSTA	11706	10299	WHITTEN RD SW/O TURNPIKE MALL ENT/EXIT	T	I	.	.	.	4050	4540
11 AUGUSTA	08401	10304	WINTER ST N/O WINTHROP ST	C	I	.	1340	.	.	840
11 AUGUSTA	01503	10306	WINTHROP ST E/O N CHESTNUT ST	C	I	.	5490	.	.	4650
11 AUGUSTA	01507	10306	WINTHROP ST W/O S CHESTNUT ST	C	I	.	5160	.	.	4490
11 AUGUSTA	06003	10306	WINTHROP ST E/O SR 8/11/27/104 (STATE)	T	I	.	.	.	3380	.
11 AUGUSTA	06007	10306	WINTHROP ST W/O SR 8/11/27/104 (STATE)	T	I	.	.	.	6300	.
11 AUGUSTA	03505	10309	WORCHESTER ST S/O SR 11/17/US 202 (EB)	C	I	.	550	.	.	480
11 AUGUSTA	06407	10316	GATEWAY BLVD (AMHI ENT #3) W/O SR 9	C	I	1880
11 AUGUSTA	10005	10336	LAMBARD RD S/O SR 17 (EASTERN AVE)	C	I	.	480	.	.	490
11 AUGUSTA	05506	10342	PARKWOOD DR SW/O CAPITAL ST EXT	C	I	.	580	.	.	560
11 AUGUSTA	05507	10349	CAPITOL ST EXT W/O PARKWOOD DR	C	I	.	2700	.	.	2570
11 AUGUSTA	08808	10361	ALDEN AVE NW/O CAPITOL ST EXT	C	I	.	1580	.	.	1490
11 AUGUSTA	05207	10364	BOND BROOK RD W/O SR 8/11/27 (CIVIC CTR)	S	I	.	.	2470	2500	.
11 AUGUSTA	05607	10364	LEIGHTON RD W/O SR 8/11/27(CIVIC CTR DR)	C	I	.	2960	.	.	3510
11 AUGUSTA	05802	10364	LEIGHTON RD NE/O MT VERNON RD	S	I	.	.	.	4600	.
11 AUGUSTA	05901	10364	LEIGHTON RD N/O BOND BROOK RD	C	I	.	5160	.	.	6010
11 AUGUSTA	05904	10364	BOND BROOK RD SE/O LEIGHTON RD@N BR#5787	S	I	.	2660	2340	.	2520
11 AUGUSTA	05801	10507	MT VERNON RD N/O LEIGHTON RD	C	I	.	800	.	.	850

2006 Maine Transportation Count Book

County

Kennebec

TOWN	STATION	ROAD	LOCATION	TYPE	GROUP	AADT02	AADT03	AADT04	AADT05	AADT06
11 AUGUSTA	00201	10509	KJ JUGHANDLE N/O SR 11/17 (WESTERN) (WB)	T	I	.	.	.	830	.
11 AUGUSTA	02005	Z0014	AUGUSTA PLAZA S/O SR 11/17 (WESTERN)(EB)	T	I	.	.	.	4680	.
11 AUGUSTA	07001	Z0033	SHUMAN AVE N/O SR 11/17/202(WESTERN AVE)	T	I	.	.	.	1700	.
11 BELGRADE	39304	0008X	SR 8 SE/O IR 371(MCGRATH POND RD)	C	II	.	1940	.	.	1840
11 BELGRADE	52401	0008X	SR 8 N/O IR 1220 (WILDER RD)	C	II	.	2350	.	.	1960
11 BELGRADE	52506	0008X	SR 8/11 SW/O SR 135	C	II	.	2380	.	.	2340
11 BELGRADE	93905	0008X	SR 8/11/27 S/O IR 1375 @ BR# 2062	S	II	6570
11 BELGRADE	52402	0011X	SR 11 NE/O SR 8	C	II	.	2680	.	.	3020
11 BELGRADE	52001	0027X	SR 27 N/O IR 725 (HULIN RD) @BR# 2063	C	II	.	4030	.	.	4690
11 BELGRADE	52604	0027X	SR 27 SE/O SR 135	C	II	.	4200	.	.	5120
11 BELGRADE	52608	0027X	SR 27 NW/O SR 135	C	II	.	5580	.	.	6230
11 BELGRADE	93604	0027X	SR 27 SE/O IR 2667 (CASTLE ISLAND RD)	C	II	.	4800	.	.	5590
11 BELGRADE	93608	0027X	SR 27 NW/O IR 2667	C	II	.	3790	.	.	4300
11 BELGRADE	39403	00331	IR 331 (MINOT HILL RD) E/O SR 135	C	II	.	650	.	.	.
11 BELGRADE	39407	00331	IR 331 (WEST RD) W/O SR 135	C	I	.	820	.	.	760
11 BELGRADE	53204	00784	IR 784 (WEST RD) SE/O IR 2589 (DUNN RD)	C	I	.	660	.	.	580
11 BELGRADE	39401	0135X	SR 135 N/O IR 331 (MINOT HILL RD)	C	II	.	1520	.	.	1350
11 BELGRADE	39405	0135X	SR 135 S/O IR 331 (WEST RD)	C	II	.	1640	.	.	.
11 BELGRADE	39500	0135X	SR 135 (BELGRADE RD) @ MANCHESTER TL	C	II	.	1590	.	.	1330
11 BELGRADE	52508	0135X	SR 135 NW/O SR 8/11	C	II	.	2560	.	.	2420
11 BELGRADE	53208	01375	IR 1375 (DEPOT RD) NW/O IR 331	C	I	350
11 BELGRADE	93908	01375	IR 1375 (DEPOT RD) NW/O SR 8/11/27	C	II	.	1480	.	.	.
11 BELGRADE	52005	02589	IR 2589 (WEST RD) S/O IR 1793 (PW)	C	III	.	760	.	.	610
11 BELGRADE	51903	02667	IR 2667 (CASTLE ISLAND RD) E/O IR 2589	C	II	.	1730	.	.	1630
11 BELGRADE	51907	02667	IR 2667 (CASTLE ISLAND RD) W/O IR 2589	C	II	.	1780	.	.	1690
11 BENTON	00303	0011X	SR 11/100/139 (BRIDGE ST) E/O BENTON AVE	C	I	.	8120	.	.	8660
11 BENTON	00307	0011X	SR 11/100/139 (BRIDGE ST) W/O BENTON AVE	C	I	.	11330	.	.	12010
11 BENTON	36407	0011X	SR 11/100/139 W/O IR 1344 (LIBBY ST)	C	I	.	7860	.	.	8280
11 BENTON	37005	0011X	SR 11/100 S/O IR 565 (BELLSQUEEZE RD)	C	I	.	3920	.	.	3730
11 BENTON	36803	00450	IR 450 (ALBION RD) E/O IR 467 (FALLS RD)	C	I	.	3210	.	.	3180
11 BENTON	36806	00467	IR 467 (FALLS RD) SW/O IR 450(ALBION RD)	C	I	.	2240	.	.	2050
11 BENTON	95805	00475	IR 475 (FOSS HILL) S/O IR 448 (ALBION)	C	I	.	220	.	.	220
11 BENTON	36902	00555	IR 555 (GOGAN RD) NE/O SR 139	C	I	.	850	.	.	820
11 BENTON	00301	00567	BENTON AVE N/O SR 11/100/139 (BRIDGE ST)	C	I	.	2440	.	.	2020

2006 Maine Transportation Count Book

Kennebec

TOWN	STATION	ROAD	LOCATION	TYPE	GROUP	AADT02	AADT03	AADT04	AADT05	AADT06
11 BENTON	00305	00567	BENTON AVE S/O SR 11/100/139 (BRIDGE ST)	C	I	.	4950	.	.	5210
11 BENTON	36505	00567	IR 567 (RIVER RD) S/O IR 1667	C	I	.	2080	.	.	1540
11 BENTON	53406	00567	IR 567 (BENTON) SW/O IR 3745 @ WINSLOW TL	C	I	.	4540	.	.	4530
11 BENTON	36406	0100A	SR 100A SW/O IR 1344 (LIBBY ST)	C	I	.	2730	.	.	2240
11 BENTON	36802	0139X	SR 139 NE/O IR 467 (FALLS RD)	C	I	.	3240	.	.	.
11 BENTON	36807	0139X	SR 139 W/O IR 467 (FALLS RD) @ BR# 3667	C	I	.	7340	.	.	7540
11 BENTON	62803	0139X	SR 139 E/O IR 559 (HANSCOMB) @ BR# 5069	C	I	.	2150	.	.	2420
11 CHELSEA	92304	0009X	SR 9 SE/O IR 368 (INTERVAL RD)	A		9160	9230	9180	10020	9210
11 CHELSEA	31500	0009X	SR 9 (RIVER RD) @ RANDOLPH TL	C	ATR92304	.	9840	.	.	9050
11 CHELSEA	92803	0017X	SR 17 E/O IR 810 (COOPER) @ WHITEFIELD TL	S	I	.	8210	.	8590	8290
11 CHELSEA	92804	00810	IR 810(COOPER) SE/O SR 17 @ WHITEFIELD TL	C	I	1460
11 CHELSEA	31602	0226X	SR 226(TOGUS RD) NE/O IR2300(WINDSOR RD)	C	I	.	3120	.	.	2870
11 CHELSEA	31606	0226X	SR 226(TOGUS RD) SW/O IR 2300(HANKERSON)	C	I	.	5120	.	.	4760
11 CHELSEA	31702	0226X	SR 226(TOGUS RD) NE/O IR2298(WELLMAN RD)	C	I	.	2070	.	.	1710
11 CHELSEA	33203	02298	IR 2298(HALLOWELL RD) E/O IR433(CONY RD)	C	I	.	1120	.	.	1190
11 CHELSEA	33207	02298	IR 2298(HALLOWELL RD) W/O IR433(CONY RD)	C	I	.	2370	.	.	2400
11 CHELSEA	34307	02298	IR 2298(HALLOWELL) W/O IR2300(TOWNHOUSE)	C	I	.	2690	.	.	2250
11 CHELSEA	92503	02298	IR 2298(HALLOWELL RD) E/O SR 9(RIVER RD)	C	I	.	2430	.	.	2360
11 CHELSEA	31607	02300	IR 2300 (HANKERSON RD) W/O SR 226(TOGUS)	C	I	.	630	.	.	680
11 CHELSEA	34305	02300	IR 2300(TOWNHOUSE) S/O IR2298(HALLOWELL)	C	I	.	870	.	.	1030
11 CHELSEA	98603	02300	IR 2300 (WINDSOR) E/O IR 1515 @ BR# 6115	C	I	.	2330	.	.	2230
11 CHELSEA	33201	03798	IR 433(CONY RD) N/O IR2298(HALLOWELL RD)	C	I	.	2050	.	.	1850
11 CHINA	33516	0003W	SR 3/9/US 202 (WB) SW/O SR 32	C	II	4660
11 CHINA	33612	0003W	SR 3 (WB) NE/O SR 9/US 202	C	ATR66007	2730
11 CHINA	66007	0003X	SR 3 W/O IR 527 (ALDER PARK RD)	A		5570	5480	5480	5530	5590
11 CHINA	33406	0003X	SR 3/9/US 202 SW/O IR 3805 (SMITH RD)	C	II	.	9530	.	.	8320
11 CHINA	33506	0003X	SR 3/9/32/US 202 (EB) SW/O SR 32	C	II	.	10500	.	.	4790
11 CHINA	33602	0003X	SR 3 (EB) NE/O SR 9/US 202	C	ATR66007	.	6790	.	.	2710
11 CHINA	66003	0003X	SR 3 E/O IR 527 (ALDER PK RD)	C	ATR66007	.	6210	.	.	.
11 CHINA	31805	0009X	SR 9/202 S/O IR444(PLEASANT VIEW RDG RD)	C	II	.	5300	.	.	4910
11 CHINA	33808	0009X	SR 9/US 202 NW/O IR 1308 (LEGION MEM DR)	C	II	.	3750	.	.	3360
11 CHINA	35401	0009X	SR 9/137/US 202 N/O SR 137	C	II	.	3000	.	.	2950
11 CHINA	35403	0009X	SR 9/US 202 E/O SR 137	C	II	.	5130	.	.	4830
11 CHINA	66302	0009X	SR 9/US 202 NE/O IR 527 (ALDER PK RD)	C	II	.	4550	.	.	4610

2006 Maine Transportation Count Book

Kennebec

TOWN	STATION	ROAD	LOCATION	TYPE	GROUP	AADT02	AADT03	AADT04	AADT05	AADT06
11 CHINA	33408	0032X	SR 32 NW/O IR 1306 (VILLAGE ST)	C	I	.	2190	.	.	1800
11 CHINA	33504	0032X	SR 32 SE/O SR 3/9/US 202	C	I	.	4470	.	.	3850
11 CHINA	96405	0032X	SR 32 S/O IR 428 (WEEKS MILLS RD)	C	I	.	3390	.	.	2870
11 CHINA	33307	00372	IR 372 (WEEKS MILLS) W/O IR 519 @BR#6238	C	I	1030
11 CHINA	32007	00388	IR 388(STANLEY HILL RD) W/O IR 483(NECK)	C	II	.	760	.	.	590
11 CHINA	96403	00428	IR 428 (WEEKS MILLS RD) E/O SR 32	C	I	.	1050	.	.	910
11 CHINA	31301	00434	IR 434 (HANSON RD) N/O SR 3	C	I	.	300	.	.	250
11 CHINA	31803	00444	IR 444(PLEASANT VIEW RDG RD) E/O SR9/202	C	I	.	1410	.	.	1340
11 CHINA	66001	00527	IR 527 (ALDER PARK RD) N/O SR 3	A		1420	1420	.	.	.
11 CHINA	50702	01341	IR 1341 (BRANCH MILLS RD) NE/O SR 3	C	I	.	1670	.	.	1540
11 CHINA	31807	01357	IR 1357(CAUSEWAY) W/O SR 9/US202@BR#3065	C	II	.	1190	.	.	950
11 CHINA	35405	01357	IR 1357 (MAIN ST) S/O SR 137	C	II	.	1510	.	.	1200
11 CHINA	35407	0137X	SR 137 W/O IR 1357 (MAIN ST)	C	II	.	5110	.	.	4510
11 CHINA	33404	03805	IR 3805 (SMITH RD) SE/O SR 3/9/US 202	C	I	10
11 CLINTON	00203	0011X	SR 11/100 (MAIN ST) E/O RAILROAD ST	C	I	4680	.	.	.	3880
11 CLINTON	00207	0011X	SR 11/100 (MAIN ST) W/O PLEASANT ST	C	I	6570	.	.	.	5880
11 CLINTON	00506	0011X	SR 11/100 (MAIN) SW/O GREENLAWN CEMETERY	C	I	.	2980	.	.	2480
11 CLINTON	01902	0011X	SR 11/100(MAIN ST) NE/O MCNALLY RD @CUL	C	I	.	2490	.	.	2300
11 CLINTON	36303	0023X	SR 23 (CANAAN RD) E/O IR 567	C	II	.	2880	.	.	2650
11 CLINTON	36307	0023X	SR 23 W/O IR 567 @ FAIRFIELD TL @BR#3389	C	II	.	4330	.	.	3810
11 CLINTON	00407	00462	BAKER ST W/O SR 11/100 (MAIN ST)	C	I	.	4770	.	.	4080
11 CLINTON	02507	00462	HINKLEY RD W/O I-95 SB RAMPS	C	I	.	2360	.	.	2110
11 CLINTON	36204	00462	IR 462 (HINKLEY RD) SE/O IR 569	C	I	.	1330	.	.	1210
11 CLINTON	36208	00462	IR 462 (HINKLEY RD) NW/O IR 569	C	I	.	1190	.	.	1110
11 CLINTON	52308	00462	IR 462(HINKLEY) NW/O IR 575(GUSTAFSON)	C	I	880
11 CLINTON	00201	00555	RAILROAD ST N/O SR 11/100 (MAIN ST)	C	I	3090	3320	.	.	2880
11 CLINTON	00205	00555	PLEASANT ST S/O SR 11/100 (MAIN ST)	C	I	1390	1350	.	.	1220
11 CLINTON	00805	00555	PLEASANT ST 0.3 MI S/O PEARL ST @ CUL	C	I	.	900	.	.	900
11 CLINTON	02108	00555	HILL RD 0.13 MI NW/O MUTTON LN @BR# 5459	C	I	.	1610	.	.	1330
11 CLINTON	02201	00557	MUTTON LN 0.11 MI N/O HILL RD @ CUL	C	I	.	990	.	.	900
11 CLINTON	36301	00567	IR 567(RIVER RD) N/O IR1345(PISHON FERRY	C	I	.	1400	.	.	1170
11 CLINTON	36305	00567	IR 567 (RIVER RD) S/O SR 23	C	I	.	1190	.	.	920
11 CLINTON	36202	00569	IR 569 (BATTLE RIDGE RD) NE/O IR 462	C	I	.	610	.	.	580
11 CLINTON	36206	00569	IR 569 (TARDIFF RD) SW/O IR 462	C	I	.	830	.	.	680

County **2006 Maine Transportation Count Book**

Kennebec

TOWN	STATION	ROAD	LOCATION	TYPE	GROUP	AADT02	AADT03	AADT04	AADT05	AADT06
11 CLINTON	01008	00760	MORRISON AVE NW/O SR 11/100 (MAIN ST)	C	I	.	520	.	.	530
11 CLINTON	01303	00762	WINN AVE E/O RAILROAD AVE	C	I	.	280	.	.	250
11 CLINTON	01903	00779	MCNALLY RD E/O SR 11/100 (MAIN) @ CUL	C	I	.	290	.	.	240
11 CLINTON	52602	0095S	I-95 (SB) N/O ON RAMP FROM HINCKLEY RD	I	ATR52104	.	8910	.	8690	.
11 CLINTON	52604	0095S	I-95 (SB) N/O OFF RAMP TO HINCKLEY RD	I	ATR52104	.	9360	.	9050	.
11 CLINTON	52601	0095X	I-95 (NB) N/O OFF RAMP TO HINCKLEY RD	I	ATR52103	.	8010	.	8450	.
11 CLINTON	52603	0095X	I-95 (NB) N/O ON RAMP FROM HINCKLEY RD	I	ATR52103	.	8510	.	8830	.
11 FARMINGDALE	00101	0027X	SR 27/US 201(MAINE AVE) N/O NORTHERN AVE	C	I	16660	16830	.	.	14760
11 FARMINGDALE	00105	0027X	SR 27/US 201(MAINE AVE) S/O NORTHERN AVE	C	I	17410	17580	.	.	15840
11 FARMINGDALE	01005	0027X	SR 27/US 201 (MAINE AVE) S/O BOWMAN ST	C	I	.	16860	.	.	.
11 FARMINGDALE	01101	0027X	SR 27/US 201 (MAINE AVE) N/O PARK ST	C	I	.	16470	.	.	14380
11 FARMINGDALE	01105	0027X	SR 27/US 201 (MAINE AVE) S/O PARK ST	C	I	.	16770	.	.	.
11 FARMINGDALE	01708	0027X	SR 27/US 201(MAINE AVE) NW/O LONSDALE RD	C	I	.	16750	.	.	14290
11 FARMINGDALE	01905	0027X	SR 27/US 201(MAINE AVE) S/O KENNEBEC DR	S	I	.	.	.	16820	15210
11 FARMINGDALE	39200	00340	IR 340 (OUTLET) @BR# 0005 @MANCHESTER TL	C	I	.	310	.	.	440
11 FARMINGDALE	01107	10021	PARK ST W/O SR 27/US 201 (MAINE AVE)	C	I	.	510	.	.	.
11 FARMINGDALE	00703	20004	BOWMAN ST E/O BLAINE RD	C	I	.	850	.	.	980
11 FARMINGDALE	01007	20004	BOWMAN ST W/O SR 27/US 201 (MAINE AVE)	C	I	590
11 FARMINGDALE	01506	20013	ALMAR ST SW/O SR 27/US 201 (MAINE AVE)	C	I	.	780	.	.	780
11 FARMINGDALE	01807	20016	MAPLE ST W/O HALLDALE HIGH ENT @ CUL	C	I	1170
11 FARMINGDALE	00107	20018	NORTHERN AVE W/O SR 27/US 201(MAINE AVE)	C	I	2450	2400	.	.	2570
11 FARMINGDALE	00507	20018	NORTHERN AVE W/O ADAMS ST	C	I	.	2000	.	.	2190
11 FARMINGDALE	00607	20018	NORTHERN AVE W/O PEACOCK RD	C	I	.	1610	.	.	1650
11 FARMINGDALE	00601	20044	PEACOCK RD N/O NORTHERN AVE	C	I	.	910	.	.	940
11 FAYETTE	40303	0017X	SR 17(MAIN ST) E/O IR2045(CAMPGROUND RD)	C	I	.	1470	.	.	1530
11 FAYETTE	40307	0017X	SR 17(MAIN ST) W/O IR2045(CAMPGROUND)@TL	C	I	.	1480	.	.	1380
11 FAYETTE	40605	0017X	SR 17(MAIN ST) S/O IR 2079(ECHO LAKE RD)	C	I	.	1710	.	.	1800
11 FAYETTE	40703	0017X	SR 17 E/O IR 2073(LOVEJOY PD RD)@BR#3053	C	I	.	2060	.	.	1950
11 FAYETTE	51704	0017X	SR 17(MAIN ST) SE/O IR538(JACKMANS MILL)	C	I	.	1240	.	.	1480
11 FAYETTE	40305	02045	IR 2045(CAMPGROUND RD) S/O IR1584(FULSOM	C	I	.	610	.	.	500
11 FAYETTE	32101	02059	IR 2059 (WATSON HEIGHTS) N/O SR 17	C	I	.	160	.	.	.
11 FAYETTE	40705	02073	IR 2073(LOVEJOY PD RD) S/O SR17(MAIN ST)	C	I	.	380	.	.	410
11 FAYETTE	40603	02079	IR 2079(ECHO LAKE RD) E/O SR 17(MAIN ST)	C	III	.	250	.	.	.
11 GARDINER	00403	00038	MECHANIC ST E/O US 201 (BRUNSWICK AVE)	C	I	.	1080	.	.	970

2006 Maine Transportation Count Book

Kennebec

TOWN	STATION	ROAD	LOCATION	TYPE	GROUP	AADT02	AADT03	AADT04	AADT05	AADT06
11 GARDINER	00100	0009X	SR 9/27/126 (EB) @ BR#2304 @ RANDOLPH TL	C	I	9880
11 GARDINER	00110	0009X	SR 9/27/126 (WB) @ BR#2304 @ RANDOLPH TL	C	I	9880
11 GARDINER	00207	0009X	SR 9/126(WATER ST) W/O US 201(BRUNSWICK)	C	I	8420
11 GARDINER	03003	0009X	SR 9/126 (COBBOSSEE AV) E/O WEST HILL RD	C	I	.	8040	.	.	8040
11 GARDINER	05002	0009X	SR 9/126 (WATER ST) NE/O CENTRAL ST	C	I	.	6260	.	.	6240
11 GARDINER	05006	0009X	SR 9/126 (CENTRAL ST) SW/O GREEN ST	C	I	7260
11 GARDINER	00605	0024X	SR 24(MAINE AVE) S/O RAMP FROM BRIDGE ST	C	I	.	10030	.	.	8760
11 GARDINER	00802	0024X	SR 24 (MAINE AVE) NE/O WATER ST	C	I	7120
11 GARDINER	00804	0024X	SR 24 (WATER ST) SE/O CHURCH ST	C	I	3340
11 GARDINER	01408	0024X	SR 24 (RIVER AVE) NW/O COTTAGE ST	C	I	.	2550	.	.	2310
11 GARDINER	02401	0024X	SR 24 (RIVER RD) N/O CAPEN RD	C	I	.	2460	.	.	2260
11 GARDINER	02502	0024X	SR 24 (RIVER RD) NE/O COSTELLO RD	C	I	.	1240	.	.	1160
11 GARDINER	02204	00627	MARSTON RD SE/O US 201 (BRUNSWICK AVE)	C	I	.	1230	.	.	1420
11 GARDINER	53502	0095S	I-295 (SB) S/O ON RAMP FROM US 201	I	II	11640	.	11060	.	11080
11 GARDINER	53504	0095S	I-295 (SB) S/O OFF RAMP TO US 201	I	II	9450	.	8740	.	9330
11 GARDINER	53501	0095X	I-295 (NB) S/O OFF RAMP TO US 201	I	II	11670	.	11010	.	10930
11 GARDINER	53503	0095X	I-295 (NB) N/O OFF RAMP TO US 201	I	II	9320	.	8940	.	9030
11 GARDINER	01501	0201X	US 201 (BRUNSWICK AVE) N/O CHURCH ST	C	I	8240
11 GARDINER	02002	0201X	US 201 (BRUNSWICK AVE) NE/O PLUMMER ST	C	I	.	10410	.	.	.
11 GARDINER	02006	0201X	US 201 (BRUNSWICK AVE) SW/O CENTRAL ST	C	I	9350
11 GARDINER	02102	0201X	US 201 (BRUNSWICK AVE) NE/O PIERCE ST	C	I	8670
11 GARDINER	02106	0201X	US 201 (BRUNSWICK AVE) SW/O MATTSON HTS	S	I	.	.	.	9080	.
11 GARDINER	02206	0201X	US 201 (BRUNSWICK AVE) SW/O MARSTON RD	C	I	.	8330	.	.	8400
11 GARDINER	02806	0201X	US 201 SW/O OLD BRUNSWICK RD S (S JCT)	C	I	.	8250	.	.	7790
11 GARDINER	03102	0201X	US 201(BRUNSWICK AVE) NE/O I-95 NB RAMPS	C	I	7370
11 GARDINER	03306	0201X	US 201 (BRUNSWICK) SW/O I-95 (SB) RAMPS	S	I	.	2650	.	2400	2520
11 GARDINER	04301	0201X	US 201 (BRIDGE ST) N/O HIGHLAND AVE	C	I	.	18090	.	.	17340
11 GARDINER	02904	02272	LIBBY HILL RD SE/O US 201	C	I	1090
11 GARDINER	05202	30008	CENTRAL ST NE/O OAK ST	C	I	.	1060	.	.	1080
11 GARDINER	01304	30009	CHERRY ST SE/O SR 9/126 (CENTRAL ST)	C	I	750
11 GARDINER	00806	30011	CHURCH ST SW/O WATER ST	C	I	4620
11 GARDINER	01502	30011	CHURCH ST NE/O DRESDEN AVE	C	I	3590
11 GARDINER	01602	30011	CHURCH ST NE/O PLEASANT ST	C	I	3710
11 GARDINER	01406	30014	COTTAGE ST SW/O SR 24 (RIVER RD)	C	I	140

2006 Maine Transportation Count Book

Kennebec

TOWN	STATION	ROAD	LOCATION	TYPE	GROUP	AADT02	AADT03	AADT04	AADT05	AADT06
11 GARDINER	01504	30018	DRESDEN AVE SE/O CHURCH ST	C	I	1020
11 GARDINER	02702	30028	HARRISON AVE NE/O ANDREWS ST	C	I	.	460	.	.	650
11 GARDINER	00902	30030	HIGH HOLBURN ST NE/O WEST ST	C	I	130
11 GARDINER	01006	30030	HIGH HOLBURN ST SW/O US 201 (BRUNSWICK)	C	I	390
11 GARDINER	03207	30031	HIGHLAND AVE W/O WEST HILL RD	C	I	.	3530	.	.	3520
11 GARDINER	03507	30031	HIGHLAND AVE W/O HARRISON AVE	C	I	.	4730	.	.	4680
11 GARDINER	03803	30031	HIGHLAND AVE E/O MT VERNON AVE	C	I	.	4670	.	.	4560
11 GARDINER	01206	30034	KINGSBURY ST SW/O SR 24 (WATER ST)	C	I	80
11 GARDINER	01708	30036	LINCOLN ST NW/O SCHOOL ST	C	I	1040
11 GARDINER	01604	30047	PLEASANT ST SE/O CHURCH ST	C	I	240
11 GARDINER	01706	30054	SCHOOL ST SW/O LINCOLN ST	C	I	580
11 GARDINER	00707	30055	SPRING ST W/O SR 9/126/US 201 (BRIDGE)	C	I	.	1180	.	.	970
11 GARDINER	01106	30065	VINE ST SW/O SR 24 (WATER ST)	C	I	310
11 GARDINER	05102	30067	WASHINGTON AVE NE/O SPRUCE ST	C	I	.	230	.	.	310
11 GARDINER	03001	30068	WEST HILL RD N/O SR 9/126(COBBOSSEE AVE)	C	I	3050
11 GARDINER	03205	30068	WEST HILL RD S/O HIGHLAND AVE	C	I	.	2660	.	.	3150
11 GARDINER	02208	30069	MARSTON RD NW/O US 201 (BRUNSWICK AVE)	C	I	1450
11 GARDINER	04508	30071	WINTER ST NW/O SR 9/126 (WATER ST)@ BR	C	I	.	1800	.	.	1460
11 GARDINER	00203	30083	WATER ST E/O SR 9/126/US 201 (BRIDGE ST)	C	I	2440
11 GARDINER	01306	30089	CENTRAL ST SW/O SR 9/126 (COBBOSSEE AVE)	C	I	1790
11 HALLOWELL	00201	0027X	SR 27/US 201 (WATER ST) N/O NORTH ST	C	I	.	13480	.	.	11590
11 HALLOWELL	00701	0027X	SR 27/US 201 (WATER ST) N/O WINTHROP ST	C	I	.	13510	.	.	11770
11 HALLOWELL	00705	0027X	SR 27/US 201 (WATER ST) S/O WINTHROP ST	C	I	15390
11 HALLOWELL	01208	0027X	SR 27/US 201 (WATER ST) NW/O MAPLE ST	C	I	.	16550	.	.	13610
11 HALLOWELL	30701	00336	IR 336 (SMITH RD) N/O IR 324 @ BR# 0557	C	I	950
11 HALLOWELL	30805	00336	IR 336(VAUGHAN RD) S/O IR 336(OUTLET RD)	C	I	930
11 HALLOWELL	30807	00336	IR 336(OUTLET RD) W/O IR2257(VAUGHAN RD)	C	I	.	890	.	.	820
11 HALLOWELL	00103	00342	WINTHROP ST E/O WHITTEN RD @ BR# 0555	C	I	.	6450	.	.	5970
11 HALLOWELL	00108	00342	WINTHROP ST NW/O WHITTEN RD	C	I	.	4720	.	.	4650
11 HALLOWELL	30705	02255	IR 2255 (SMITH RD) S/O IR 324(HALLOWELL)	C	I	810
11 HALLOWELL	30801	02257	IR 2257(VAUGHAN RD) N/O IR336(OUTLET RD)	C	I	1370
11 HALLOWELL	31005	02259	IR 2259 (TOWN FARM) S/O IR 342(WINTHROP)	C	I	.	1570	.	.	1730
11 HALLOWELL	00101	02265	WHITTEN RD N/O WINTHROP ST	C	I	4740
11 HALLOWELL	00304	40001	ACADEMY ST SE/O MIDDLE ST	C	I	340

2006 Maine Transportation Count Book

Kennebec

	TOWN	STATION	ROAD	LOCATION	TYPE	GROUP	AADT02	AADT03	AADT04	AADT05	AADT06
11	HALLOWELL	00308	40001	ACADEMY ST NW/O MIDDLE ST	C	I	440
11	HALLOWELL	01507	40004	CENTRAL ST W/O SR 27/US 201 (WATER ST)	C	I	1260
11	HALLOWELL	01603	40004	CENTRAL ST E/O ORCHARD LN	C	I	.	800	.	.	.
11	HALLOWELL	01907	40011	GREENVILLE ST W/O SR 27/US 201(WATER ST)	C	I	.	860	.	.	910
11	HALLOWELL	01303	40017	LITCHFIELD RD E/O MIDDLE ST	T	I	500
11	HALLOWELL	01307	40017	LITCHFIELD RD W/O MIDDLE ST	T	I	1750
11	HALLOWELL	01207	40018	MAPLE ST W/O SR 27/US 201 (WATER ST)	C	I	.	1950	.	.	1740
11	HALLOWELL	00306	40020	MIDDLE ST SW/O ACADEMY ST	C	I	1770
11	HALLOWELL	01005	40020	MIDDLE ST S/O GROVE ST	C	I	.	1460	.	.	1520
11	HALLOWELL	01301	40020	MIDDLE ST N/O LITCHFIELD RD	T	I	1440
11	HALLOWELL	01706	40020	MIDDLE ST SW/O WINTHROP ST	C	I	.	2180	.	.	1860
11	HALLOWELL	00207	40021	NORTH ST W/O SR 27/US 201 (WATER ST)	C	I	.	1420	.	.	1160
11	HALLOWELL	00405	40027	SECOND ST S/O LINCOLN ST @ BR# 0565	C	I	.	4350	.	.	3930
11	HALLOWELL	00601	40027	SECOND ST N/O TEMPLE ST	C	I	1060
11	HALLOWELL	00801	40027	SECOND ST N/O GROVE ST	C	I	690
11	HALLOWELL	01801	40027	SECOND ST N/O CENTRAL ST	C	I	.	2250	.	.	1580
11	HALLOWELL	01805	40027	SECOND ST S/O CENTRAL ST	C	I	.	2110	.	.	1780
11	HALLOWELL	00604	40032	TEMPLE ST SE/O SECOND ST	C	I	1040
11	HALLOWELL	00507	40045	WINTHROP ST W/O SECOND ST	C	I	.	8050	.	.	7460
11	HALLOWELL	00707	40045	WINTHROP ST W/O SR 27/US 201 (WATER ST)	C	I	7400
11	LITCHFIELD	43902	0009X	SR 9/126 NE/O HALLOWELL RD	T	II	.	.	3030	.	.
11	LITCHFIELD	43907	0009X	SR 9/126 W/O HALLOWELL RD	T	I	.	2950	2950	.	2870
11	LITCHFIELD	94502	0009X	SR 9/126 NE/O IR 2518(PW) @W GARDINER TL	C	I	.	2470	.	.	2440
11	LITCHFIELD	44206	00304	IR 304 (POND RD) SW/O IR 498 (THOROFARE)	C	I	1050
11	LITCHFIELD	94401	00304	IR 304 (POND RD) N/O IR 314	C	I	.	710	.	.	590
11	LITCHFIELD	94603	00316	IR 316 (DENNIS HILL) E/O IR 2237 @ TL	C	I	.	430	.	.	400
11	LITCHFIELD	51202	00322	IR 322 (HALLOWELL RD) NE/O IR 353 (NECK)	C	I	.	1910	.	.	1520
11	LITCHFIELD	43901	00353	IR 353 (HALLOWELL RD) N/O SR 9/126	T	I	.	1620	1480	.	1490
11	LITCHFIELD	43905	00353	IR 353 (HALLOWELL RD) S/O SR 9/126	T	I	.	1210	1130	.	1100
11	LITCHFIELD	51201	00353	IR 353 (NECK RD) N/O IR 322 (HALLOWELL)	C	I	.	970	.	.	970
11	LITCHFIELD	64905	00363	IR 363 (HUNTINGTON HILL RD) S/O SR 197	C	I	.	1410	.	.	1270
11	LITCHFIELD	43806	00365	IR 365 (WHIPPOORWILL RD) SW/O IR 2064	C	II	.	1220	.	.	810
11	LITCHFIELD	44203	00498	IR 498 (THOROFARE RD)E/O IR 304(POND RD)	C	I	.	680	.	.	820
11	LITCHFIELD	43200	0197X	SR 197 @ WALES TL	C	I	.	2420	.	.	.

2006 Maine Transportation Count Book

County

Kennebec

TOWN	STATION	ROAD	LOCATION	TYPE	GROUP	AADT02	AADT03	AADT04	AADT05	AADT06
11	LITCHFIELD	44005	0197X	SR 197 S/O IR 2237 (UPR POND RD)	C	I	.	1590	.	1180
11	LITCHFIELD	44008	0197X	SR 197 NW/O IR 2237 (UPR POND RD)	C	I	.	1440	.	1000
11	LITCHFIELD	44107	0197X	SR 197 W/O IR 353 (HALLOWELL RD)	C	I	.	2160	.	1930
11	LITCHFIELD	43807	02064	IR 2064 (HARDSCRABBLE RD) W/O IR 365	C	II	.	1610	.	1310
11	MANCHESTER	41507	0011X	SR 11/100/202 (WESTERN) W/O IR 353(POND)	C	ATR41907	.	17970	.	16510
11	MANCHESTER	45007	0011X	SR 11/100/202 W/O IR 925 @ WINTHROP TL	C	ATR41907	.	.	.	14850
11	MANCHESTER	41508	0017X	SR 17(READFIELD RD) NW/O SR 11/100/US202	C	I	.	6870	.	.
11	MANCHESTER	95204	0017X	SR 17(READFIELD RD) SE/O IR339(WORTHING)	C	I	.	.	.	5590
11	MANCHESTER	98207	0017X	SR 11/US 202 W/O IR 2277 (PELTON HILL)	C	I	.	21640	.	20170
11	MANCHESTER	95004	00335	IR 335(PRESCOTT) SE/O IR 337(PUDDLEDOCK)	C	I	.	1290	.	1080
11	MANCHESTER	50303	00336	IR 336 (MEADOW HILL RD) E/O IR 353(POND)	C	I	.	330	.	420
11	MANCHESTER	34002	00337	IR 337 (PUDDLEDOCK RD) NE/O SR 11/17/202	C	I	.	2510	.	1420
11	MANCHESTER	39504	00337	IR 337(PRESCOTT RD) SE/O SR135(BELGRADE)	C	I	.	940	.	830
11	MANCHESTER	95202	00339	IR 339(WORTHING RD) NE/O SR17(READFIELD)	C	I	.	240	.	290
11	MANCHESTER	43703	00340	IR 340 (COLLINS RD) E/O IR 353 (POND RD)	C	I	.	450	.	.
11	MANCHESTER	34004	00342	IR 342(GRANITE HILL RD) SE/O SR11/17/202	C	I	.	3940	.	4090
11	MANCHESTER	41506	00353	IR 353 (POND RD) SW/O SR 11/100/202	C	I	.	3600	.	3500
11	MANCHESTER	43701	00353	IR 353 (POND RD) N/O IR 340 (COLLINS RD)	C	I	.	2400	.	2490
11	MANCHESTER	39506	0135X	SR 135(BELGRADE RD) SW/O IR337(PRESCOTT)	C	II	.	.	.	830
11	MANCHESTER	95107	02082	IR 2082 (SCRIBNER HILL RD) W/O IR 337	C	I	.	410	.	440
11	MANCHESTER	45102	02269	IR 2269(SUMMERHAVEN) NE/O IR337(PRESCOTT)	C	I	.	.	.	500
11	MONMOUTH	43302	0009X	SR 9/126 NE/O IR 3714(NORTH OAK HILL RD)	C	II	.	3580	.	.
11	MONMOUTH	43306	0009X	SR 9/126 SW/O IR 3714 @ WALES TL	C	I	.	4430	.	3920
11	MONMOUTH	53902	0009X	SR 9/126 NE/O IR1379(OAK HILL ACRES)NJCT	C	I	.	.	.	2960
11	MONMOUTH	94104	0009X	SR 9/126 SE/O IR 365 (TOWN FARM RD)	C	I	.	2850	.	2330
11	MONMOUTH	42300	0011X	SR 11/100/US 202 @ WINTHROP TL	C	ATR41907	.	7960	.	8270
11	MONMOUTH	42703	0011X	SR 11/100/US 202 E/O SR 132	C	ATR41907	.	8760	.	8670
11	MONMOUTH	42707	0011X	SR 11/100/US 202 W/O SR 132	C	ATR41907	.	6560	.	6470
11	MONMOUTH	43505	00303	IR 303 (SANBORN RD) S/O SR 135	C	II	.	1080	.	1120
11	MONMOUTH	98805	00305	IR 305(WAUGAN RD) S/O IR 1076 @ BR# 0487	C	II	.	1080	.	1060
11	MONMOUTH	43608	00343	IR 343 (MACOMBER RD) NW/O SR 135	C	III	.	450	.	450
11	MONMOUTH	43405	00345	IR 345 (S MONMOUTH RD) S/O IR 2064	C	II	.	1090	.	1110
11	MONMOUTH	39105	00347	IR 347 (RIDGE RD) S/O IR 2309 (GILMAN)	C	I	.	360	.	340
11	MONMOUTH	44308	00655	IR 655 (ACADEMY RD) NW/O SR 132	C	I	.	1260	.	730

2006 Maine Transportation Count Book

Kennebec

TOWN	STATION	ROAD	LOCATION	TYPE	GROUP	AADT02	AADT03	AADT04	AADT05	AADT06
11 MONMOUTH	42705	0132X	SR 132 S/O SR 11/100/US 202	C	I	.	3280	.	.	3140
11 MONMOUTH	42905	0132X	SR 132 S/O IR 502 (WELCH AVE)	C	I	.	2240	.	.	2290
11 MONMOUTH	43100	0132X	SR 132 @ WALES TL	C	I	.	1400	.	.	.
11 MONMOUTH	93501	0132X	SR 132 N/O IR 2052 (BLUE ST)	C	I	3370
11 MONMOUTH	42803	0135X	SR 135 (PLEASANT ST) E/O SR 132(MAIN ST)	C	II	.	760	.	.	700
11 MONMOUTH	43503	0135X	SR 135 E/O IR 303 (SANBORN RD) @ BR#5275	C	II+III	1090
11 MONMOUTH	43507	0135X	SR 135 W/O IR 303 (SANBORN RD)	C	II	.	1050	.	.	1200
11 MONMOUTH	43602	0135X	SR 135 NE/O IR 343 (MACOMBER RD)	C	III	.	560	.	.	610
11 MONMOUTH	50108	02050	IR 2050(WILSON PD RD) NW/O IR2549(BACK)	C	I	.	520	.	.	690
11 MONMOUTH	35104	02052	IR 2052 (BLUE RD) SE/O SR 11/100/US 202	C	I	.	1110	.	.	.
11 MONMOUTH	93507	02052	IR 2052 (BLUE ST) W/O SR 132	C	I	.	1860	.	.	.
11 MONMOUTH	44303	02062	IR 2062 (BERRY RD) E/O SR 132	C	II	.	500	.	.	390
11 MONMOUTH	37904	02064	IR 2064(MAPLE ST) SE/O IR 500(GRAY MILL)	C	I	1200
11 MONMOUTH	38704	02064	IR 2064(COBBOSSEE) SE/O IR 2559 @BR#0520	C	I	.	1330	.	.	1060
11 MONMOUTH	39207	02064	IR 2064 (COBBOSSEE RD) W/O IR 2227	C	I	.	1340	.	.	1220
11 MONMOUTH	43403	02064	IR 2064 (COBBOSSEE RD) E/O IR 303	C	II	.	1340	.	.	1240
11 MONMOUTH	43407	02064	IR 2064 (COBBOSSEE RD) W/O IR 345	C	II	.	820	.	.	750
11 MONMOUTH	34608	02093	IR 2093 (N MAIN RD) NW/O IR 2551	C	I	.	1160	.	.	1140
11 MONMOUTH	34904	02093	IR 2093(ANABESACOOK) SE/O SR11/100/US202	C	II	.	650	.	.	600
11 MONMOUTH	35201	02095	IR 2095(PISGAH) N/O IR2549(WILSON PD)@TL	C	I	.	740	.	.	730
11 MONMOUTH	42701	02097	IR 2097 (BLAISDELL RD) N/O SR 11/100/202	C	I	.	900	.	.	930
11 MONMOUTH	39201	02227	IR 2227 (PRESCOTT HILL RD) N/O IR 2064	C	II	.	120	.	.	160
11 MONMOUTH	39003	02309	IR 2309 (RIDGE RD) E/O SR 132	C	I	.	510	.	.	410
11 MONMOUTH	43002	02548	IR 2548 (NORRIS HILL) NE/O SR 11/100/202	C	I	.	1180	.	.	1030
11 MONMOUTH	44506	02548	IR 2548 (ACADEMY RD) SW/O SR 132	C	I	.	550	.	.	360
11 MONMOUTH	44602	02548	IR 2548 (NORRIS HILL) NE/O IR 2052(BLUE)	C	I	.	500	.	.	440
11 MONMOUTH	34602	02551	IR 2551 (OLD LEWISTON) NE/O IR 2093	C	I	.	350	.	.	360
11 MONMOUTH	42903	02559	IR 2559 (WELCH AVE) E/O SR 132	C	I	.	200	.	.	180
11 MONMOUTH	43304	03714	IR 3714 (SOUTH MONMOUTH) SE/O SR 9/126	C	I	.	1560	.	.	1490
11 MONMOUTH	43308	03714	IR 3714 (SOUTH MONMOUTH) NW/O SR 9/126	C	II	.	2020	.	.	1980
11 MT VERNON	39705	0041X	SR 41 S/O IR 2021(SEAVEY CNR RD)@BR#2837	C	I	1100
11 MT VERNON	39801	0041X	SR 41 (POND RD) N/O IR 2055 (MAIN ST)	C	I	.	1610	.	.	1680
11 MT VERNON	40501	0041X	SR 41 N/O IR 2075 (SANDY RIVER RD)	C	I	890
11 MT VERNON	40503	0041X	SR 41 E/O IR 2075(SANDY RIVER) @BR# 2930	C	I	.	1250	.	.	1110

2006 Maine Transportation Count Book

Kennebec

	TOWN	STATION	ROAD	LOCATION	TYPE	GROUP	AADT02	AADT03	AADT04	AADT05	AADT06
11	MT VERNON	40505	0041X	SR 41 S/O IR 2077 (DESERT POND RD)	C	I	.	1270	.	.	1130
11	MT VERNON	39707	02021	IR 2021(SEAVEY CNR RD) W/O SR 41 @BR#5688	C	I	.	720	.	.	670
11	MT VERNON	51802	02041	IR 2041 (WATSON PD RD) NE/O IR 2667 @ TL	C	I	570
11	MT VERNON	39606	02055	IR 2055 (CHURCH) SW/O IR 315 (NORTH RD)	C	I	.	430	.	.	470
11	MT VERNON	39608	02055	IR 315 (NORTH RD) NW/O IR 2055 (CHURCH)	C	I	.	1150	.	.	1100
11	MT VERNON	39803	02055	IR 2055 (NORTH RD) E/O IR 2667(BELGRADE)	C	I	.	1150	.	.	1000
11	MT VERNON	53605	02055	IR 2055 (NORTH RD) S/O IR 2537(BLAKE RD)	C	I	1050
11	MT VERNON	40507	02075	IR 2075 (SANDY RIVER RD) W/O IR 2079	C	I	.	360	.	.	350
11	MT VERNON	37204	02537	IR 2537 (BLAKE HILL RD) SE/O SR41@BR2380	C	I+II	.	120	.	.	120
11	MT VERNON	39802	02667	IR 2667(BELGRADE RD) NE/O IR 2055(NORTH)	C	I	.	1460	.	.	1440
11	MT VERNON	51803	02667	IR 2667 (CASTLE ISLAND RD) E/O IR 2041	C	II	.	1440	.	.	1350
11	MT VERNON	51806	02667	IR 2667 (BELGRADE RD) SW/O IR 2041	C	I	.	1240	.	.	1190
11	OAKLAND	01006	0011X	SR 11 (BELGRADE) SW/O LAKE VIEW DR	C	I	.	3940	.	.	4680
11	OAKLAND	02006	0011X	SR 11 (CHURCH ST) SW/O SR 137 (OAK ST)	C	I	.	5910	.	.	6910
11	OAKLAND	02103	0011X	SR 11/137 (WTVL RD) E/O COUNTRY CLUB RD	C	I	.	15630	.	.	15300
11	OAKLAND	02907	0011X	SR 11/137 (MAIN ST) W/O SR 23 (WATER ST)	C	I	5970
11	OAKLAND	03304	0011X	SR 11/137 (WTVL RD) SE/O CASCADE MILL RD	C	I	12170
11	OAKLAND	37302	0011X	SR 11 NE/O IR 1202 (BLAKE LN)	C	II	3800
11	OAKLAND	37306	0011X	SR 11 SW/O IR 369 (TOWN FARM RD)	C	II	.	3320	.	.	3530
11	OAKLAND	45303	0011X	SR 11/137(WATERVILLE) E/O IR1935(FOREST)	C	I	16830
11	OAKLAND	00205	0023X	SR 23 (SUMMER) 0.1 MI S/O ALPINE @ CUL	C	I	.	4880	.	.	4640
11	OAKLAND	02902	0023X	SR 23 (FAIRFIELD) NE/O SR 11/137 (WTVL)	C	I	.	3790	.	.	3760
11	OAKLAND	02906	0023X	SR 23 (WATER) SW/O SR 11/137 (WTVL RD)	C	I	.	3520	.	.	3230
11	OAKLAND	03202	0023X	SR 23 0.2 MI NE/O BROOMHANDLE RD @ CUL	C	I	.	3380	.	.	2960
11	OAKLAND	38106	0023X	SR 23 (POND RD) SW/O IR 2260 (WEBB RD)	C	II	.	1640	.	.	1470
11	OAKLAND	38508	00375	IR 375 (E POND RD) NW/O SR 137	C	II	.	1060	.	.	1110
11	OAKLAND	02301	00379	OAK ST N/O PLEASANT ST	C	I	.	5400	.	.	4930
11	OAKLAND	72803	00734	IR 734(RICES RIPS) E/O SR 23 @# 3484/85	C	I	.	1900	.	.	1730
11	OAKLAND	00202	01336	ALPINE ST NE/O SR 23 (SUMMER ST)	C	I	.	1340	.	.	1130
11	OAKLAND	02307	0137X	SR 137 (HIGH) W/O OAK ST	C	I	.	6840	.	.	5960
11	OAKLAND	02400	0137X	SR 137 (HIGH) @ CUL (@ POLE# 32/36)	C	II	.	6020	.	.	4970
11	OAKLAND	38504	0137X	SR 137 (SMITHFIELD JCT) SE/O IR 375	C	II	.	4470	.	.	3610
11	OAKLAND	38103	02260	IR 2260 (WEBB RD) E/O IR 2281(MIDDLE RD)	C	I	.	2850	.	.	2590
11	OAKLAND	38604	02266	IR 2266 (COUNTY RD) SE/O SR 23	C	I	.	1860	.	.	1850

2006 Maine Transportation Count Book

Kennebec

TOWN	STATION	ROAD	LOCATION	TYPE	GROUP	AADT02	AADT03	AADT04	AADT05	AADT06
11 OAKLAND	38005	02281	IR 2281(MIDDLE RD) S/O IR 2252 (TRAFTON)	C	I	.	2390	.	.	2270
11 OAKLAND	38105	02281	IR 2281(MIDDLE RD) S/O IR 2260 (WEBB RD)	C	I	2400
11 OAKLAND	02908	03165	DUNN ST NW/O SR 11/137 (MAIN ST)	C	I	.	7860	.	.	7300
11 PITTSTON	30401	0027X	SR 27 (WISCASSET RD) N/O IR 2278(KELLEY)	C	II	.	5780	.	.	5250
11 PITTSTON	30405	0027X	SR 27 (WISCASSET RD) S/O IR 2278(KELLEY)	C	II	.	5570	.	.	4900
11 PITTSTON	30608	0027X	SR 27/126 (WATER ST) NW/O SR 126@BR#2862	C	I	.	11860	.	.	10710
11 PITTSTON	32605	0027X	SR 27(WISCASSET RD) S/O IR2276(TROOP RD)	C	II	.	6340	.	.	5470
11 PITTSTON	51506	00409	IR 409(BLINN HILL) SW/O IR 2282 @BR#0532	C	I	270
11 PITTSTON	91604	00417	IR 417 (N BEECH HILL RD) SE/O SR 126	C	I	.	110	.	.	.
11 PITTSTON	30203	00421	IR 421(HUNTS MEADOW) E/O SR 194 @BR#0499	C	I	410
11 PITTSTON	44701	00427	IR 427 (PINKHAM RD) N/O SR 126 @ BR#0501	C	I	290
11 PITTSTON	30300	0126X	SR 126 (WHITEFIELD RD) @ WHITEFIELD TL	S	I	.	1340	.	1260	1280
11 PITTSTON	30603	0126X	SR 126(WHITEFIELD RD) E/O IR3003(SCHOOL)	C	I	.	2670	.	.	2730
11 PITTSTON	44702	0126X	SR 126 (WHITEFIELD) NE/O IR 427(PINKHAM)	C	I	.	1940	.	.	2150
11 PITTSTON	91607	0126X	SR 126(WHITEFIELD RD) W/O IR 429(NELSON)	C	I	.	1660	.	.	1700
11 PITTSTON	30003	0194X	SR 194 E/O IR 409(NASH RD)@WHITEFIELD TL	S	I	.	700	.	600	650
11 PITTSTON	30207	0194X	SR 194 W/O IR 417 (S BEECH HILL RD)	C	I	1550
11 PITTSTON	30504	0194X	SR 194 (E PITTSTON) SE/O IR 3003(SCHOOL)	C	I	.	2700	.	.	2710
11 PITTSTON	32603	02276	IR 2276(TROOP RD) E/O SR27(WISCASSET RD)	C	I	120
11 PITTSTON	30403	02278	IR 2278 (KELLEY RD) E/O SR 27(WISCASSET)	C	I	.	750	.	.	820
11 PITTSTON	51103	02278	IR 2278(KELLEY) E/O IR 413(MAST)@BR#5938	C	I	380
11 PITTSTON	51107	02278	IR 2278(KELLEY) W/O IR 413(MAST)@BR#6057	C	I	450
11 RANDOLPH	00201	0009X	SR 9 (WATER ST) N/O BELMONT AVE	C	ATR92304	.	9640	.	.	8890
11 RANDOLPH	00601	0009X	SR 9(WATER) N/O GARDINER-RANDOLPH BR	C	ATR92304	.	10970	.	.	9740
11 RANDOLPH	00801	0027X	SR 27/126 (WATER) N/O SR 226 (WINDSOR)	C	I	17460
11 RANDOLPH	00805	0027X	SR 27/126 (WATER) S/O SR 226 (WINDSOR)	C	I	.	13110	.	.	12010
11 RANDOLPH	01804	0027X	SR 27/126 (WATER) SE/O IGA @ TOGUS BK	C	I	11250
11 RANDOLPH	00203	01391	BELMONT AVE E/O SR 9 (WATER ST)	C	I	.	460	.	.	400
11 RANDOLPH	00703	01392	CENTRAL ST E/O SR 27/126 (WATER ST)	C	I	160
11 RANDOLPH	00403	01395	CLOSSON ST E/O SR 9 (WATER ST)	C	I	350
11 RANDOLPH	00101	01398	HILLCREST AVE N/O CLOSSON ST	C	I	130
11 RANDOLPH	00301	01398	HILLCREST AVE N/O CENTRAL ST	C	I	300
11 RANDOLPH	01406	01400	KINDERHOOK ST SW/O SR 226 (WINDSOR ST)	C	I	.	1190	.	.	960
11 RANDOLPH	00901	01405	PLEASANT ST N/O SR 226 WINDSOR ST	C	I	380

2006 Maine Transportation Count Book

Kennebec

TOWN	STATION	ROAD	LOCATION	TYPE	GROUP	AADT02	AADT03	AADT04	AADT05	AADT06
11 RANDOLPH	00503	01406	SCHOOL ST E/O SR 9 (WATER ST)	C	I	520
11 RANDOLPH	00803	0226X	SR 226 (WINDSOR RD) E/O SR 27/126(WATER)	C	I	.	7480	.	.	6760
11 RANDOLPH	01407	0226X	SR 226 (WINDSOR ST) W/O KINDERHOOK ST	C	I	.	6660	.	.	5920
11 READFIELD	40807	0017X	SR 17 (MAIN ST) W/O SR 41 (CHIMNEY RD)	C	I	2510
11 READFIELD	40903	0017X	SR 17 (MAIN ST) E/O SR 41 (WINTHROP RD)	C	I	.	5440	.	.	4970
11 READFIELD	40907	0017X	SR 17/41(MAIN ST) W/O SR 41(WINTHROP RD)	C	I	.	4740	.	.	4260
11 READFIELD	41303	0017X	SR 17/135(MAIN ST) E/O IR 323(PLAINS RD)	C	I	.	6270	.	.	6090
11 READFIELD	41403	0017X	SR 17 (MAIN ST) E/O SR 135 (GORDEN RD)	C	I	.	5590	.	.	5530
11 READFIELD	65601	00315	IR 315(NORTH RD) N/O IR 671(WINGS MILLS)	C	I	.	830	.	.	680
11 READFIELD	65701	00315	IR 315 (NORTH RD) N/O SR 17 (MAIN ST)	C	I	.	1710	.	.	1530
11 READFIELD	41006	00317	IR 317 (SOUTH RD) SW/O SR 17 (MAIN ST)	C	I	.	840	.	.	950
11 READFIELD	41301	00323	IR 323(PLAINS RD) N/O SR 17/135(MAIN ST)	C	I	.	750	.	.	660
11 READFIELD	41105	00341	IR 341(MEMORIAL) S/O IR 2096(BEAVER DAM)	C	II+III	.	410	.	.	390
11 READFIELD	34100	0041X	SR 41 (WINTHROP RD) @ WINTHROP TL	C	I	.	1400	.	.	1350
11 READFIELD	40808	0041X	SR 41 (CHIMNEY RD) NW/O SR 17 (MAIN ST)	C	I	1350
11 READFIELD	40905	0041X	SR 41 (WINTHROP RD) S/O SR 17 (MAIN ST)	C	I	.	1830	.	.	1570
11 READFIELD	65602	00671	IR 671(WINGS MILLS RD) NE/O IR315(NORTH)	C	I	.	580	.	.	520
11 READFIELD	41206	0135X	SR 135 (STANLEY RD) SW/O SR 17 (MAIN ST)	C	I	.	1080	.	.	820
11 READFIELD	41401	0135X	SR 135 (GORDEN RD) N/O SR 17 (MAIN ST)	C	II	.	1000	.	.	1060
11 READFIELD	40901	02055	IR 2055 (CHURCH RD) N/O SR 17 (MAIN ST)	C	I	.	1160	.	.	1320
11 READFIELD	45203	02082	IR 2082(SCRIBNER HILL) E/O SR135(GORDEN)	C	I	270
11 READFIELD	41104	02096	IR 2096(BEAVER DAM)SE/O IR 341(MEMORIAL)	C	II+III	.	340	.	.	330
11 READFIELD	41108	02096	IR 2096 (BEAVER DAM RD) NW/O IR 341	C	II+III	470
11 READFIELD	51605	02183	IR 2183(STURTEVANT HILL RD) S/O SR 17/41	C	I	.	930	.	.	870
11 ROME	38905	0027X	SR 27 S/O SR 225	C	II	.	2670	.	.	3150
11 ROME	38908	0027X	SR 27 NW/O SR 225	C	II	.	2590	.	.	3050
11 ROME	40108	0027X	SR 27 NW/O IR 2041 (WATSON POND RD)	C	II	.	2280	.	.	2690
11 ROME	93801	0027X	SR 27 N/O IR 722 (RICHARDSON RD)	C	II	.	3020	.	.	3730
11 ROME	40106	02041	IR 2041 (WATSON POND RD) SW/O SR 27	C	I	.	450	.	.	340
11 ROME	38806	0225X	SR 225 SW/O IR 2088 (WOOSTER HILL RD)	C	II	.	1490	.	.	1380
11 ROME	38902	0225X	SR 225 NE/O IR 333 (DRURY LN)	C	II	.	1730	.	.	1600
11 ROME	52103	0225X	SR 225 E/O IR 329 (JAMAICA POINT RD)	C	II	.	1820	.	.	1740
11 SIDNEY	34408	0008X	SR 8/11/27 (BELGRADE) NW/O SR 23 (POND)	S	II	.	7070	.	7300	6910
11 SIDNEY	34401	0023X	SR 23 (POND RD) N/O SR 8/11/27	C	I+II	.	2350	.	.	2400

2006 Maine Transportation Count Book

Kennebec

TOWN	STATION	ROAD	LOCATION	TYPE	GROUP	AADT02	AADT03	AADT04	AADT05	AADT06
11 SIDNEY	36001	0023X	SR 23 (POND RD) N/O IR 1524 (QUAKER RD)	C	I+II	.	1620	.	.	1560
11 SIDNEY	37405	0023X	SR 23 (POND RD) S/O IR 2248 (DRUMMOND)	C	I	.	1260	.	.	1130
11 SIDNEY	63203	00366	IR 366 (DINSMORE RD) E/O IR 2281(MIDDLE)	C	I	620
11 SIDNEY	63207	00366	IR 366 (SHEPARD RD) W/O IR 2281(MIDDLE)	C	I	1020	1030	.	.	1220
11 SIDNEY	53104	0095S	I-95 (SB) N/O OFF RAMP TO LYONS RD	I		.	12590	.	13480	14200
11 SIDNEY	53102	0095S	I-95 (SB) N/O ON RAMP FROM LYONS RD	I	ATR52104	.	12420	.	13120	.
11 SIDNEY	53103	0095X	I-95 (NB) N/O ON RAMP FROM LYONS RD	I		.	12560	.	13140	14030
11 SIDNEY	53101	0095X	I-95 (NB) N/O OFF RAMP TO LYONS RD	I	ATR52103	.	12320	.	12890	.
11 SIDNEY	34506	0104X	SR 104 SW/O IR 1696 (TOWN LANDING RD)	C	I	.	1280	.	.	1470
11 SIDNEY	34701	0104X	SR 104 (W RIVER RD) N/O IR 2238 (LYONS)	C	I	.	2380	.	.	2560
11 SIDNEY	34705	0104X	SR 104 (W RIVER RD) S/O IR 2238 (LYONS)	C	I	.	1370	.	.	1460
11 SIDNEY	37601	0104X	SR 104 (W RIVER) N/O IR 2248 (DRUMMOND)	C	I	.	2490	.	.	2640
11 SIDNEY	34707	02238	IR 2238 (LYONS RD) W/O SR 104 (W RIVER)	C	I	.	1840	.	.	1730
11 SIDNEY	34806	02238	IR 2238 (LYONS RD) SW/O I-95 (SB) RAMPS	C	I	.	1570	.	.	.
11 SIDNEY	37607	02248	IR 2248(DRUMMOND RD) W/O SR 104(W RIVER)	C	I	.	530	.	.	540
11 SIDNEY	63201	02281	IR 2281 (MIDDLE) N/O IR 366 (DINSMORE)	C	I	2110	2030	.	.	1870
11 SIDNEY	63205	02281	IR 2281 (MIDDLE) S/O IR 366 (SHEPARD RD)	C	I	2090	1860	.	.	1740
11 SIDNEY	63501	02281	IR 2281 (MIDDLE) N/O IR 2248 (DRUMMOND)	C	I	.	2050	.	.	2080
11 SIDNEY	63505	02281	IR 2281 (MIDDLE) S/O IR 2248 (DRUMMOND)	C	I	.	1980	.	.	1960
11 VASSALBORO	66402	0003X	SR 3/US 202 NE/O IR 1725(BOAT LAUNCH RD)	W		7800
11 VASSALBORO	50906	0003X	SR 3/9/US 202 SW/O IR 2234 (STONE RD)	C	II	.	8730	.	.	7720
11 VASSALBORO	35005	0032X	SR 32 S/O IR 447 (S STANLEY HILL RD)	C	I	.	2990	.	.	2670
11 VASSALBORO	37704	0032X	SR 32 SE/O IR 1243 (MAPLE ST)	C	I	.	4070	.	.	4110
11 VASSALBORO	37708	0032X	SR 32 NW/O IR 1242 (PREBLE HILL RD)	C	I	.	4660	.	.	4460
11 VASSALBORO	91103	00386	IR 386 (BOG RD) E/O SR 100/US 201	C	I	.	1480	.	.	1360
11 VASSALBORO	35007	00390	IR 390 (BOG RD) W/O SR 32	C	I	.	1680	.	.	1330
11 VASSALBORO	37706	00392	IR 392 (OAK GROVE) SW/O IR 3075 (CANAL)	C	I	.	1560	.	.	1300
11 VASSALBORO	64102	00392	IR 392 (OAK GROVE RD) NE/O SR 100/US 201	C	I	.	1010	.	.	900
11 VASSALBORO	33001	00439	IR 439 (CROSS HILL) N/O IR 2234 (STONE)	C	I	.	590	.	.	530
11 VASSALBORO	33104	00441	IR 441 (TABER HILL) SE/O IR 392 (OAK GR)	C	I	.	440	.	.	420
11 VASSALBORO	50801	00443	IR 443(WEBBER PD) N/O IR 2234(HANNAFORD)	C	I	.	1100	.	.	980
11 VASSALBORO	35003	00447	IR 447 (S STANLEY HILL RD) E/O SR 32	C	I	.	1020	.	.	850
11 VASSALBORO	37702	00447	IR 447(PRIEST HILL) NE/O IR 1242(PREBLE)	C	I	.	900	.	.	920
11 VASSALBORO	97805	0100X	SR 100/US201 S/O IR3106(CUSHNOC RD)(NJCT	A	ATR97805	4340	4470	4420	4120	.

2006 Maine Transportation Count Book

Kennebec

TOWN	STATION	ROAD	LOCATION	TYPE	GROUP	AADT02	AADT03	AADT04	AADT05	AADT06
11 VASSALBORO	32402	0100X	SR 100/US 201 NE/O IR 1891 @ WINSLOW TL	C	ATR97805	.	5550	.	.	4850
11 VASSALBORO	64101	0100X	SR 100/US 201 N/O IR 392 (OAK GROVE RD)	C	ATR97805	.	5210	.	.	4410
11 VASSALBORO	90905	0100X	SR 100/US 201 S/O IR 2234 (WEBBER POND)	C	ATR97805	.	5550	.	.	.
11 VASSALBORO	91101	0100X	SR 100/US 201 N/O IR 386 (BOG RD)	C	ATR97805	.	5340	.	.	4410
11 VASSALBORO	91105	0100X	SR 100/US 201 S/O IR 386 (BOG RD)	S	ATR97805	.	4900	.	3970	.
11 VASSALBORO	50803	02234	IR 2234(HANNAFORD) E/O IR 443 @ BR# 3722	C	I	.	800	.	.	820
11 VASSALBORO	50904	02234	IR 2234 (LEGION PARK RD) SE/O SR 3/9/202	C	I	.	550	.	.	550
11 VASSALBORO	50908	02234	IR 2234 (STONE RD) NW/O SR 3/9/US 202	C	I	.	520	.	.	480
11 VASSALBORO	90903	02234	IR 2234 (WEBBER POND) E/O SR 100/US 201	C	I	.	1240	.	.	1280
11 VIENNA	40003	0041X	SR 41 E/O IR 2033 (KIMBALL PD) @BR# 2901	C	I	.	1250	.	.	1160
11 VIENNA	40008	0041X	SR 41 NW/O IR 2033 (KIMBALL POND RD)	C	I	.	1120	.	.	1080
11 VIENNA	40201	0041X	SR 41 N/O IR 2021 (TOWER RD)	C	II	.	1290	.	.	1220
11 VIENNA	40204	0041X	SR 41 SE/O IR 2021 (TOWER RD)	C	I	.	1000	.	.	950
11 VIENNA	40205	02021	IR 2021 (TOWER RD) S/O SR 41	C	I	.	270	.	.	.
11 VIENNA	40001	02033	IR 2033 (KIMBALL POND RD) N/O SR 41	C	I	230
11 WATERVILLE	01502	0011X	SR11/100/202 (COLLEGE AVE) NE/O ALLEN ST	C	I	11350
11 WATERVILLE	05002	0011X	SR 11/100 (COLLEGE AVE) NE/O UNION ST	C	I	.	12150	.	.	10900
11 WATERVILLE	05101	0011X	SR 11/104 (ELM) N/O SR 137 BUS (SILVER)	C	I	.	8540	.	.	7770
11 WATERVILLE	05106	0011X	SR11/104/137(SILVER) SW/O SR 11/104(ELM)	C	I	.	14300	.	.	.
11 WATERVILLE	05605	0011X	SR 11/104 (ELM ST) S/O ELM TERRACE	C	I	.	14610	.	.	11600
11 WATERVILLE	05903	0011X	SR 11/137 (KMD) E/O FIRST RANGEWAY	C	I	.	17500	.	.	17950
11 WATERVILLE	05907	0011X	SR 11/137 (KMD) W/O FIRST RANGEWAY	C	I	.	19390	.	.	19640
11 WATERVILLE	07103	0011X	SR 11/137 (KMD) E/O AIRPORT RD	C	I	.	19370	.	.	19730
11 WATERVILLE	07306	0011X	SR 11/137 (KMD) SW/O I-95 (SB) ON RAMP	C	I	.	15980	.	.	.
11 WATERVILLE	08201	0011X	SR 11/100/US 201 (COLLEGE) N/O OAK ST	C	I	.	16350	.	.	13230
11 WATERVILLE	10606	00298	ABENAKI RD SW/O SR 137 (CARTER MEM BR)	C	I	.	3600	.	.	3400
11 WATERVILLE	11007	00734	RICES RIPS RD W/O MARSTON RD	C	I	.	2050	.	.	1940
11 WATERVILLE	52902	0095S	I-95 (SB) N/O ON RAMP FROM SR104(N MAIN)	I	ATR52104	.	9440	.	10680	.
11 WATERVILLE	52904	0095S	I-95 (SB) N/O OFF RAMP TO SR 104(N MAIN)	I	ATR52104	.	12070	.	13280	.
11 WATERVILLE	53002	0095S	I-95(SB) N/O ON RAMP FROM SR11/137 KMDEB	I	ATR52104	.	12400	.	12690	.
11 WATERVILLE	53004	0095S	I-95(SB) N/O ON RAMP FROM SR11/137 KMDWB	I	ATR52104	.	10740	.	10400	.
11 WATERVILLE	53006	0095S	I-95 (SB) N/O OFF RAMP TO SR 11/137(KMD)	I	ATR52104	.	13840	.	15350	.
11 WATERVILLE	52901	0095X	I-95 (NB) N/O OFF RAMP TO SR 104(N MAIN)	I	ATR52103	.	10760	.	10080	.
11 WATERVILLE	52903	0095X	I-95 (NB) N/O ON RAMP FROM SR104(N MAIN)	I	ATR52103	.	12150	.	12670	.

2006 Maine Transportation Count Book

Kennebec

	TOWN	STATION	ROAD	LOCATION	TYPE	GROUP	AADT02	AADT03	AADT04	AADT05	AADT06
11	WATERVILLE	53001	0095X	I-95 (NB) N/O OFF RAMP TO SR 11/137(KMD)	I	ATR52103	.	10040	.	9780	.
11	WATERVILLE	53003	0095X	I-95(NB) N/O ON RAMP FROM SR 11/137(KMD)	I	ATR52103	.	14210	.	14720	.
11	WATERVILLE	05604	0100X	SR 100/US 201(SB)(MAIN ST) SE/O ALLEN RD	C	I	.	10620	.	.	8840
11	WATERVILLE	06101	0100X	SR 100/201 (FRONT)OW N/O REVERSE DIR RMP	C	I	.	9270	.	.	7020
11	WATERVILLE	06103	0100X	SR 100/137 BUS E/O WATER ST @ WINSLOW TL	C	I	.	22960	.	.	19330
11	WATERVILLE	06108	0100X	SR 100(MAIN ST)(OW) NW/O REVERSE DIR RMP	C	I	.	10440	.	.	8310
11	WATERVILLE	07805	0100X	SR 100/US 201(FRONT)OW S/O CONNECTOR "A"	C	I	.	6970	.	.	5730
11	WATERVILLE	01908	0104X	SR 104 (MAIN ST) NW/O RIDGE RD	C	I	.	8160	.	.	7980
11	WATERVILLE	02604	0104X	SR 104 (MAIN ST) SE/O KELSEY ST	C	I	15280
11	WATERVILLE	02708	0104X	SR 104 (MAIN ST) NW/O EUSTIS PKWY	C	I	.	17950	.	.	18370
11	WATERVILLE	05608	0104X	SR 104 (MAIN ST) NW/O COLLEGE AVE	C	I	.	12820	.	.	12370
11	WATERVILLE	06806	0104X	SR 104 (W RIVER) SW/O SR 11/104/137(KMD)	C	I	7830
11	WATERVILLE	07401	0104X	SR 104 (MAIN ST) N/O SANGER AVE	C	I	.	15600	.	.	14500
11	WATERVILLE	10402	0104X	SR 104 (W RIVER RD) NE/O WEBB RD	C	I	.	5900	.	.	9290
11	WATERVILLE	06107	0137C	SPRING ST W/O SR 100 (MAIN ST)	C	I	.	10390	.	.	.
11	WATERVILLE	06006	0137X	BUS 137 (SILVER ST) SW/O SPRING ST	C	I	.	7600	.	.	6990
11	WATERVILLE	10604	0137X	SR 137 (CARTER MEM BR) SE/O ABENAKI RD	S	I	.	11140	.	.	10420
11	WATERVILLE	10608	0137X	SR 137 (CARTER MEM BR APP) NW/O ABENAKI	C	I	.	9130	.	.	8650
11	WATERVILLE	02203	50007	ARMORY RD E/O SR 104 (MAIN ST)	C	I	.	10310	.	.	9290
11	WATERVILLE	05607	50039	CENTER ST (OW) W/O SR 11/104 (ELM ST)	C	I	.	640	.	.	570
11	WATERVILLE	06907	50045	CHASE AVE W/O FIRST RANGEWAY	C	I	.	3150	.	.	2810
11	WATERVILLE	10802	50055	COOL ST NE/O SAWTELLE ST	C	I	.	5010	.	.	5350
11	WATERVILLE	02301	50062	DRUMMOND AVE N/O ARMORY RD	C	I	.	4060	.	.	3570
11	WATERVILLE	02706	50074	EUSTIS PKWY SW/O SR 104 (MAIN ST)	C	I	.	5990	.	.	6280
11	WATERVILLE	05902	50078	FIRST RANGEWAY NE/O SR 11/137 (KMD)	C	I	.	6080	.	.	4790
11	WATERVILLE	06906	50078	FIRST RANGEWAY SW/O WESTERN AVE	C	I	.	5840	.	.	4550
11	WATERVILLE	09902	50078	FIRST RANGEWAY NE/O ELMHURST	C	I	.	3410	.	.	3440
11	WATERVILLE	01107	50087	GILMAN ST W/O PLEASANT ST	C	I	.	2920	.	.	2730
11	WATERVILLE	08703	50087	GILMAN ST E/O MESSALONSKEE AVE @ BR	C	I	.	4630	.	.	4400
11	WATERVILLE	06604	50097	GROVE ST SE/O SR 137 (CARTER MEM DR)	C	I	.	3820	.	.	3140
11	WATERVILLE	01807	50105	HAZELWOOD AVE W/O SR 11/100(COLLEGE AVE)	C	I	.	5960	.	.	5970
11	WATERVILLE	02606	50119	JOHNSON HTS SW/O SR 104 (MAIN ST)	C	I	350
11	WATERVILLE	02603	50121	KELSEY ST E/O SR 104 (MAIN ST)	C	I	330
11	WATERVILLE	02007	50148	NORTH ST HILL W/O COUNTY RD	C	I	.	5140	.	.	5040

2006 Maine Transportation Count Book

Kennebec

	TOWN	STATION	ROAD	LOCATION	TYPE	GROUP	AADT02	AADT03	AADT04	AADT05	AADT06
11	WATERVILLE	04907	50148	MAYFLOWER HILL DR W/O FIRST RANGEWAY	C	I	.	2010	.	.	2060
11	WATERVILLE	11300	50148	MAYFLOWER HILL DR @ COLBY COLLEGE ENT	C	I	.	2960	.	.	3030
11	WATERVILLE	11406	50148	MAYFLOWER HILL DR SW/O CAMPUS DR	C	I	.	3930	.	.	3700
11	WATERVILLE	03104	50166	NORTH ST SE/O EUSTIS PKWY	C	I	.	3990	.	.	3970
11	WATERVILLE	03108	50166	NORTH ST NW/O EUSTIS PKWY	C	I	6160
11	WATERVILLE	04007	50166	NORTH ST W/O SR 104 (MAIN ST)	C	I	.	3380	.	.	3410
11	WATERVILLE	09608	50166	NORTH ST NW/O WEST ST @ BR	C	I	4760
11	WATERVILLE	02703	50170	OAK ST E/O SR 104 (MAIN ST)	C	I	.	3790	.	.	3660
11	WATERVILLE	08207	50170	OAK ST W/O SR 11/100/US 201 (COLLEGE)	C	I	.	3080	.	.	2690
11	WATERVILLE	07406	50187	PLEASANT ST SW/O SR 104 (MAIN ST)	C	I	.	4480	.	.	4170
11	WATERVILLE	09502	50187	PLEASANT ST NE/O WESTERN AVE	C	I	.	3420	.	.	2770
11	WATERVILLE	01902	50197	RIDGE RD NE/O SR 104 (MAIN ST)	C	I	.	1500	.	.	1210
11	WATERVILLE	06106	50255	WATER ST SW/O SPRING ST RAMPS	C	I	.	5880	.	.	4830
11	WATERVILLE	09605	50259	WEST ST S/O NORTH ST	C	I	.	2890	.	.	2440
11	WATERVILLE	04807	50260	WESTERN AVE W/O SR 11/104 (ELM ST)	C	I	.	6340	.	.	5600
11	WATERVILLE	06904	50260	WESTERN AVE SE/O FIRST RANGEWAY	C	I	.	4490	.	.	3650
11	WATERVILLE	09008	50260	WESTERN AVE NW/O MESSALONSKEE AVE	C	I	4390
11	WATERVILLE	11003	50283	RICES RIPS RD E/O MARSTON RD @ I-95 BR	C	I	.	2910	.	.	2720
11	WATERVILLE	11102	50283	CAMPUS DR NE/O RICES RIPS RD	C	I	.	4430	.	.	4240
11	WATERVILLE	11408	50283	CAMPUS DR NW/O MAYFLOWER HILL DR	C	I	.	5150	.	.	5020
11	WATERVILLE	06701	50303	WASHINGTON ST N/O SR 11/137 (KMD)	C	I	.	5330	.	.	5560
11	WATERVILLE	11105	50303	WASHINGTON ST S/O RICES RIPS RD	C	I	.	3980	.	.	.
11	WATERVILLE	11201	50303	WASHINGTON ST N/O SENIOR APTS ENT	C	I	.	3490	.	.	3250
11	WATERVILLE	11205	50303	WASHINGTON ST S/O SENIOR APTS ENT	C	I	.	3350	.	.	3260
11	WATERVILLE	11002	50316	MARSTON RD NE/O RICES RIPS RD	C	I	.	880	.	.	850
11	WAYNE	42403	0133X	SR 133 E/O IR 2081 (OLD WINTHROP RD)	C	I	.	3810	.	.	3680
11	WAYNE	42504	0133X	SR 133 SE/O SR 219 (LEEDS RD)	C	I	.	3540	.	.	3420
11	WAYNE	42508	0133X	SR 133(BEECH HILL RD) NW/O SR 219(LEEDS)	C	I	.	1850	.	.	1800
11	WAYNE	97004	0133X	SR 133 SE/O IR 2091 (GREENTRUE RD)	C	I	.	4140	.	.	3950
11	WAYNE	35302	02030	IR 2030(KINGS HWY) NE/O SR133(BEECH HILL	C	I	.	200	.	.	200
11	WAYNE	42303	02030	IR 2030(KENTS HILL) E/O IR 2073 @BR#2624	C	I	460
11	WAYNE	53703	02030	IR 2030 (WALTON RD) E/O IR 2061(POND RD)	C	I	500
11	WAYNE	32302	02061	IR 2061 (POND RD) NE/O SR 133	C	I	.	900	.	.	840
11	WAYNE	53705	02061	IR 2061 (POND RD) S/O IR 2030 @ BR# 5550	C	I	560

2006 Maine Transportation Count Book

Kennebec

	TOWN	STATION	ROAD	LOCATION	TYPE	GROUP	AADT02	AADT03	AADT04	AADT05	AADT06
11	WAYNE	42404	02081	IR 2081 (OLD WINTHROP RD) SE/O SR 133	C	I	.	820	.	.	800
11	WAYNE	42304	02085	IR 2085(N WAYNE) SE/O IR2030(KENTS HILL	C	I	460
11	WAYNE	97005	02091	IR 2091 (FAIRBANKS RD) S/O SR 133	C	I	.	440	.	.	400
11	WAYNE	42507	0219X	SR 219 (LEEDS RD) W/O SR 133(BEECH HILL)	C	I+II	.	2150	.	.	1930
11	WAYNE	53800	02306	IR 2306 (MT PISGAH RD) @ BR# 0524 @ TL	C	I	410
11	WEST GARDINER	44407	0009X	SR 9/126 W/O IR 1343 (S JCT)	C	I	.	6980	.	.	6980
11	WEST GARDINER	50603	0009X	SR 9/126 E/O IR 2239 (BOG HILL RD)	C	I	.	3700	.	.	4090
11	WEST GARDINER	50503	00322	IR 322 (HIGHLAND AVE) E/O IR 324	C	I	.	1300	.	.	1300
11	WEST GARDINER	94803	00322	IR 322 (HIGHLAND AVE) E/O IR 2243	C	I	.	2070	.	.	2040
11	WEST GARDINER	50402	00324	IR 324 (HALLOWELL) NE/O IR 2245 (BENSON)	C	I	.	2600	.	.	2410
11	WEST GARDINER	50502	00324	IR 324 (HALLOWELL) NE/O IR 322(HIGHLAND)	C	I	.	1120	.	.	1020
11	WEST GARDINER	64605	00353	IR 353 (NECK RD) S/O IR 2243	C	I	.	1020	.	.	1040
11	WEST GARDINER	53402	0095S	I-295 (SB) S/O ON RAMP FROM SR 9/126	I	II	10220	.	9690	.	9900
11	WEST GARDINER	53404	0095S	I-295 (SB) S/O OFF RAMP TO SR 9/126	I	II	9350	.	8600	.	9150
11	WEST GARDINER	53401	0095X	I-295 (NB) S/O OFF RAMP TO SR 9/126	I	II	10350	.	9930	.	9880
11	WEST GARDINER	53403	0095X	I-295 (NB) N/O OFF RAMP TO SR 9/126	I	II	9140	.	8850	.	8920
11	WEST GARDINER	50602	02239	IR 2239 (SPEARS CORNER RD) NE/O SR 9/126	C	I	.	1530	.	.	1700
11	WEST GARDINER	53106	02241	IR 2241 (INDIANA RD) SW/O SR 9/126	C	I	.	550	.	.	.
11	WEST GARDINER	94808	02243	IR 2243 (TOWNHOUSE RD) NW/O IR 322	C	I	.	1780	.	.	1870
11	WEST GARDINER	50407	02245	IR 2245 (BENSON) W/O IR 324 (HALLOWELL)	C	I	.	820	.	.	790
11	WINDSOR	31903	0017X	SR 17/32 E/O IR 511 (HUNTS MEADOW RD)	C	I	.	8560	.	.	7370
11	WINDSOR	31907	0017X	SR 17 (AUGUSTA RD) W/O SR 32 (RIDGE RD)	C	I	.	8330	.	.	7240
11	WINDSOR	31901	0032X	SR 32 (RIDGE RD) N/O SR 17 @ BR	C	I	.	3800	.	.	3330
11	WINDSOR	33704	0032X	SR 32 (RIDGE RD) SE/O IR 372 (TYLER RD)	C	I	.	2710	.	.	2290
11	WINDSOR	33708	0032X	SR 32 (RIDGE RD) NW/O IR 372 (TYLER RD)	C	I	.	2690	.	.	2210
11	WINDSOR	63101	0032X	SR 32(RIDGE RD) N/O SR105(S BELFAST AVE)	C	I	.	3220	.	.	2890
11	WINDSOR	63105	0032X	SR 32(RIDGE RD) S/O SR105(S BELFAST AVE)	C	I	.	4020	.	.	3360
11	WINDSOR	33702	00372	IR 372 (TYLER RD) NE/O SR 32 (RIDGE RD)	C	I	.	670	.	.	610
11	WINDSOR	33706	00372	IR 372(WEEKS MILLS RD) SW/O SR 32(RIDGE)	C	I	.	540	.	.	500
11	WINDSOR	54004	00410	IR 410 (MAXCYS MILL) SE/O IR 485@BR#1730	C	I	460
11	WINDSOR	54104	00422	IR 422 (CHOATE RD) SE/O IR 509 @ BR#0500	C	I	180
11	WINDSOR	54102	00509	IR 509(SHUMAN) 0.5MI NE/O IR 422@BR#0512	C	I	40
11	WINDSOR	31905	00511	IR 511(HUNTS MEADOW RD) S/O SR 17	C	I	.	530	.	.	430
11	WINDSOR	51003	0105X	SR 105 E/O IR 489 (WINGOOD RD)	C	I	830	920	.	880	720

2006 Maine Transportation Count Book

Kennebec

	TOWN	STATION	ROAD	LOCATION	TYPE	GROUP	AADT02	AADT03	AADT04	AADT05	AADT06
11	WINDSOR	63103	0105X	SR 105(S BELFAST AVE) E/O SR32(RIDGE RD)	C	I	.	1540	.	.	1280
11	WINDSOR	63107	0105X	SR 105(S BELFAST AVE) W/O SR32(RIDGE RD)	C	I	.	1790	.	.	1260
11	WINSLOW	00303	0032X	SR 32/137 (CHINA) E/O SR 100/137(BAY ST)	S	I	.	18570	.	.	15230
11	WINSLOW	01008	0032X	SR 32 NW/O BASSETT RD @BR# 3710	C	I	.	4320	.	.	.
11	WINSLOW	01105	0032X	SR 32 (CUSHMAN RD) S/O SR 137 (CHINA RD)	C	I	.	5830	.	.	4990
11	WINSLOW	01903	00438	ALBION RD E/O GARLAND RD	C	I	.	1440	.	.	1310
11	WINSLOW	02003	00438	IR 438 (ALBION RD) E/O IR 539 (ABBOTT)	C	I	.	1360	.	.	1190
11	WINSLOW	01205	00459	REYNOLDS RD S/O SR 137 (CHINA RD)	C	I	.	690	.	.	710
11	WINSLOW	01402	00461	N POND RD NE/O SR 137 (CHINA RD)	C	I	.	830	.	.	710
11	WINSLOW	01506	00463	IR 463 (MAPLE RIDGE) SW/O SR 137 (CHINA)	C	I	.	680	.	.	680
11	WINSLOW	01905	00467	GARLAND RD S/O ALBION RD	C	I	2110
11	WINSLOW	02004	00539	IR 539 (ABBOTT RD) SE/O IR 438 (ALBION)	C	I	.	840	.	.	760
11	WINSLOW	00202	0100A	SR 100A (HALIFAX ST) NE/O SR 100(BAY ST)	C	I	.	5830	.	.	4990
11	WINSLOW	00503	0100A	SR 100A (HALIFAX ST) E/O CLINTON AVE	C	I	.	3360	.	.	2570
11	WINSLOW	02507	0100A	SR 100A (HALIFAX ST) W/O WHIPPLE ST	C	I	.	3060	.	.	2790
11	WINSLOW	04302	0100A	SR 100A (HALIFAX RD) NE/O SMILEY RD	C	I	2130
11	WINSLOW	00201	0100X	SR 100/137/US 201 (BAY) N/O SR 100A	C	I	.	16760	.	.	14040
11	WINSLOW	00301	0100X	SR 100/137/US 201 (BAY) N/O SR 32(CHINA)	S	I	.	21020	.	.	18930
11	WINSLOW	00306	0100X	SR 100/US 201 (AUGUSTA RD) SW/O CHINA RD	S	I	.	8980	.	.	.
11	WINSLOW	00701	0100X	SR 100/US 201 (AUGUSTA) N/O CARTER MEM	S	I	.	7270	.	.	7200
11	WINSLOW	00705	0100X	SR100/US 201(AUGUSTA) S/O SR137 (CARTER)	C	I	.	6770	.	.	6490
11	WINSLOW	03806	0100X	SR 100/US 201(AUGUSTA) SW/O CLIFFORD AVE	C	I	7720
11	WINSLOW	01103	0137C	SR 137 (CHINA RD) E/O SR 32 (CUSHMAN RD)	C	I	7950
11	WINSLOW	00703	0137X	SR 137 (CARTER MEM RD) E/O SR 100/US 201	S	I	.	6620	.	.	6360
11	WINSLOW	01504	0137X	SR 137 (CHINA) SE/O IR 463 (NOWELL RD)	C	II	.	4770	.	.	4520
11	WINSLOW	04403	0137X	SR 137 (CHINA) E/O DUNBAR @ BR# 2362	C	I	.	7940	.	.	7260
11	WINSLOW	00101	60007	BENTON AVE N/O CLINTON AVE	C	I	8610
11	WINSLOW	03002	60007	BENTON AVE NE/O STOBIE ST	C	I	7550
11	WINSLOW	03006	60007	BENTON AVE SW/O STOBIE ST	C	I	7790
11	WINSLOW	03206	60007	BENTON AVE SW/O BARTON ST	C	I	.	7210	.	.	7340
11	WINSLOW	00507	60019	CLINTON AVE W/O SR 100A (HALIFAX ST)	C	I	.	2350	.	.	1830
11	WINSLOW	02303	60019	CLINTON AVE E/O GARAND ST	C	I	.	7000	.	.	6030
11	WINSLOW	00404	60022	DANIELSON ST SE/O BENTON AVE	C	I	2390
11	WINSLOW	03905	60031	GARAND ST S/O STOBIE ST	C	I	.	1360	.	.	1270

2006 Maine Transportation Count Book

Kennebec

TOWN	STATION	ROAD	LOCATION	TYPE	GROUP	AADT02	AADT03	AADT04	AADT05	AADT06
11 WINSLOW	01300	60032	GARLAND RD @ CUL @ BR# 3228	C	I	.	2450	.	.	2140
11 WINSLOW	00307	60046	LITHGOW ST W/O SR 100/US 201(AUGUSTA RD)	S	I	.	580	.	.	550
11 WINSLOW	03004	60068	STOBIE ST SE/O BENTON AVE	C	I	270
11 WINSLOW	04001	60087	SMILEY AVE N/O CLINTON AVE	C	I	.	2040	.	.	1650
11 WINTHROP	04012	0011W	SR 11/100/US 202 (WB) NE/O MAIN ST	C	ATR41907	.	7310	.	.	7140
11 WINTHROP	41907	0011X	SR 11/US 202 W/O IR 941 (WELCHS PT RD)	A		15390	15180	14740	14460	14560
11 WINTHROP	00502	0011X	SR 11/100/US 202 NE/O ANNABESSACOOK RD	T	ATR41907	.	12750	.	12220	11950
11 WINTHROP	00506	0011X	SR 11/100/US 202 SW/O OLD LEWISTON RD	T	ATR41907	.	9590	.	10000	9870
11 WINTHROP	01803	0011X	SR 11/100/US 202 E/O HIGHLAND AVE	S	ATR41907	.	10330	.	.	10370
11 WINTHROP	01807	0011X	SR 11/100/US 202 W/O HIGHLAND AVE	S	ATR41907	.	10280	.	.	9950
11 WINTHROP	04002	0011X	SR 11/100/US 202 (EB) NE/O MAIN ST	C	ATR41907	.	7520	.	.	7200
11 WINTHROP	40703	0011X	SR 11/100/US 202 E/O SR 135 (E JCT)	C	ATR41907	.	14920	.	.	14300
11 WINTHROP	41807	0011X	SR 11/100/US 202 W/O SR 135 (W JCT)	C	ATR41907	.	14860	.	.	14200
11 WINTHROP	41903	0011X	SR11/US202 E/O IR2566(TURTLE RUN)(M JCT	S	ATR41907	.	.	.	15850	.
11 WINTHROP	00205	00305	ANNABESSACOOK RD S/O ANNABESSACOOK DR	C	I	.	1360	.	.	1140
11 WINTHROP	00505	00305	ANNABESSACOOK RD S/O SR 11/100/US 202	T	I	.	1610	.	1350	1540
11 WINTHROP	01502	00341	METCALF RD NE/O MAIN ST	C	I	.	990	.	.	990
11 WINTHROP	36701	00341	IR 341 (BEARCE RD) N/O IR 536 (METCALF)	C	II	.	690	.	.	810
11 WINTHROP	36706	00341	IR 341(METCALF RD) SW/O IR 536 (BEARCE)	C	I	.	680	.	.	690
11 WINTHROP	01605	00343	HOLMES RD S/O NARROWS POND RD	C	III	1150
11 WINTHROP	01801	00343	HIGHLAND AVE N/O SR 11/100/US 202	C	I	.	2010	.	.	1930
11 WINTHROP	01805	00343	HIGHLAND AVE S/O SR 11/100/US 202	C	II+III	.	2440	.	.	2420
11 WINTHROP	00705	0041X	SR 41/133 S/O SR 41/133 @ BR# 5521	C	I	.	3110	.	.	2880
11 WINTHROP	01301	0041X	SR 41/133 N/O MAIN ST	C	I	.	7930	.	.	7700
11 WINTHROP	01901	0041X	SR 41/133 N/O SUMMER ST	C	I+II	8740
11 WINTHROP	42101	0041X	SR 41 N/O IR 2183 (STURTEVANT HILL RD)	C	I	.	2380	.	.	2280
11 WINTHROP	42207	00514	IR 514 (TURKEY LN) W/O IR 2551	C	I	.	560	.	.	640
11 WINTHROP	00107	00516	MAIN ST W/O GREEN ST @ BR	C	I	.	9500	.	.	8640
11 WINTHROP	02302	00516	MAIN ST NE/O MORTON ST	C	I	.	8970	.	.	7620
11 WINTHROP	02903	00516	MAIN ST E/O GREENWOOD AVE	C	I	.	9050	.	.	8250
11 WINTHROP	02907	00516	MAIN ST W/O HIGHLAND AVE	C	I	.	9320	.	.	8550
11 WINTHROP	03702	00516	MAIN ST NE/O DEPOT ST	C	I	.	6160	.	.	6070
11 WINTHROP	03803	00516	MAIN ST E/O SQUIRE HILL PLAZA WEST ENT	C	I	.	7990	.	.	7420
11 WINTHROP	36103	00524	IR 524 (MARANACOOK RD) E/O SR 41	C	II+III	.	550	.	.	550

2006 Maine Transportation Count Book

Kennebec

	TOWN	STATION	ROAD	LOCATION	TYPE	GROUP	AADT02	AADT03	AADT04	AADT05	AADT06
11	WINTHROP	36703	00536	IR 536 (METCALF RD) E/O IR 341(BEARCE)	C	II	.	630	.	.	710
11	WINTHROP	02201	00673	BOWDOIN ST N/O MAIN ST	C	II	.	3390	.	.	2930
11	WINTHROP	02501	00673	BOWDOIN ST N/O SUMMER ST	C	III	1850
11	WINTHROP	03103	00673	MEMORIAL DR E/O LEIGHTON DR	C	II+III	.	680	.	.	770
11	WINTHROP	03202	00673	MEMORIAL DR NE/O KNICKERBOCKER RD	C	II+III	.	1110	.	.	1060
11	WINTHROP	03206	00673	BOWDOIN ST SW/O GREEN ST @ BR	C	III	.	1830	.	.	1610
11	WINTHROP	37808	00673	IR 673 (MEMORIAL DR) NW/O IR 341(BEARCE)	C	II+III	.	500	.	.	520
11	WINTHROP	41905	00941	IR 941 (WELCHES PT RD) S/O SR 11/US 202	C	I	.	150	.	.	190
11	WINTHROP	01307	01112	HIGH ST W/O SR 41/133	C	I	.	780	.	.	750
11	WINTHROP	42107	0133X	SR 133 (WAYNE RD) W/O SR 41	C	I	.	5480	.	.	5280
11	WINTHROP	36601	0135X	SR 135 (STANLEY RD) N/O IR 536 (METCALF)	C	I	.	1530	.	.	1250
11	WINTHROP	40705	0135X	SR 135 S/O SR 11/100/US 202 (E JCT)	C	II+III	.	1470	.	.	1440
11	WINTHROP	41801	0135X	SR 135 N/O SR 11/100/US 202 (W JCT)	C	I	.	1740	.	.	1610
11	WINTHROP	51305	0135X	SR 135 (WINTHROP CENTER RD) S/O IR 2094	C	III	.	820	.	.	900
11	WINTHROP	42001	02005	IR 2005 (CARLETON POND RD) N/O IR 1562	C	I	.	340	.	.	390
11	WINTHROP	41702	02007	IR 2007 (CASE) NE/O IR 2566(OLD VILLAGE)	C	I	.	380	.	.	270
11	WINTHROP	42608	02085	IR 2085(N WAYNE) NW/O IR969(NEW SANDWICH	C	I	.	630	.	.	570
11	WINTHROP	01603	02094	NARROWS POND RD E/O HOLMES RD	C	II	.	1000	.	.	1060
11	WINTHROP	51307	02094	IR 2094 (NARROWS POND RD) W/O SR 135	C	II	.	480	.	.	530
11	WINTHROP	44908	02132	IR 2132 (CROSS RD) NW/O SR 11/100/US 202	C	I	.	490	.	.	520
11	WINTHROP	42108	02183	IR 2183 (STURTEVANT HILL RD) NW/O SR 41	C	I	.	1040	.	.	1010
11	WINTHROP	00508	02551	OLD LEWISTON RD NW/O SR 11/100/US 202	T	I	.	1560	.	1510	1370
11	WINTHROP	51405	02560	IR 2560 (SOUTH RD) S/O SR 11/100/US 202	C	III	.	1050	.	.	820
11	WINTHROP	41606	02566	IR 2566 (TURTLE RUN) SW/O IR 939(ISLAND)	C	I	.	190	.	.	130
11	WINTHROP	41904	02566	IR2566(TURTLE RUN) SE/O SR11/US202(M JCT	C	I	.	120	.	.	130
11	WINTHROP	41908	02566	IR2566(TURTLE RUN) NW/O SR11/US202(M JCT	C	I	.	280	.	.	260
11	WINTHROP	51402	02566	IR 2566 (OLD VILLAGE) NE/O SR 11/US 202	C	I	.	240	.	.	180
11	WINTHROP	03203	02568	KNICKERBOCKER RD E/O MEMORIAL DR	C	III	.	790	.	.	640
11	WINTHROP	03205	02569	GREEN ST (OW) S/O BOWDOIN ST	C	III	.	430	.	.	300
11	WINTHROP	01903	02570	SUMMER ST E/O SR 41/133	C	II	.	2610	.	.	2560
11	WINTHROP	02105	02641	ROYAL ST S/O MAIN ST	C	I	.	1000	.	.	900
11	WINTHROP	02901	02653	GREENWOOD AVE N/O MAIN ST	C	III	.	1080	.	.	1070
11	WINTHROP	03802	02665	PECK FARM RD NE/O MAIN ST	C	I	820
11	WINTHROP	00706	A1414	SR 41/133 SW/O WESTERN AVE	C	I	.	2820	.	.	2820