

TOWN OF CRANBERRY ISLES

ISLAND ACCESS IMPROVEMENTS
CRANBERRY ISLES, MAINE

ADDENDUM #1

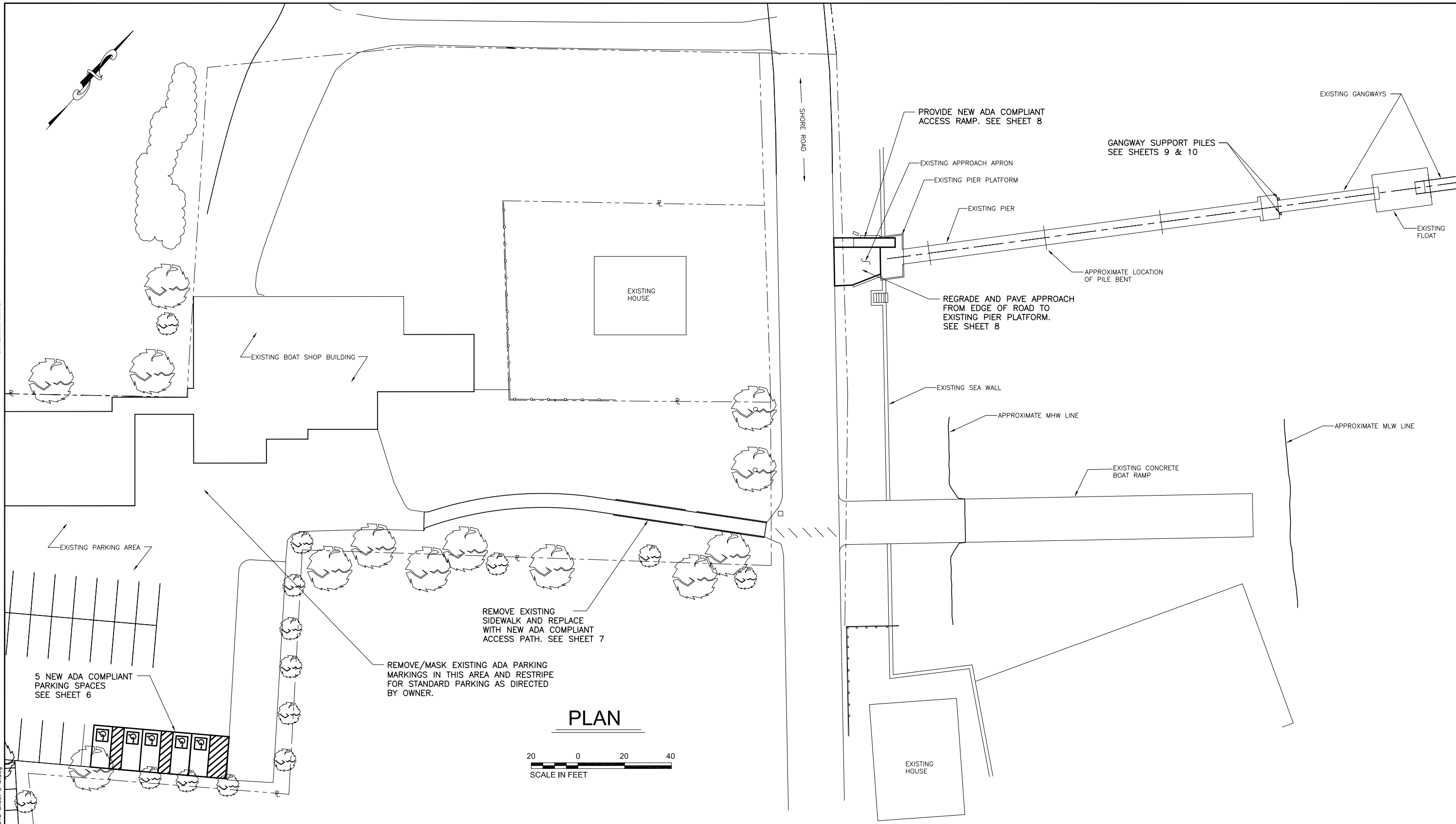
NOVEMBER 24, 2009

1. Change in Manset Walkway Layout – Sheets 5 and 7
 - a. Note the change in layout at the TCI Manset property walkway. The walkway is to curve toward the green space, away from the large trees to allow room for excavation around the tree roots. The location of the two handrail sections are at the shore end of the walkway, to minimize the excavation cut. Install drainage swale on north side of walkway.

Enclosures: Sheet 5, Rev 1
Sheet 7, Rev 1

End of Addendum #1

THIS DOCUMENT IS A SHAW-WORTHINGTON PROVIDED FOR THE CONVENIENCE OF THE USER AND IS NOT AN INSTRUMENT OF SERVICE. ANY INSTRUMENT OF SERVICE SHALL BE SEPARATELY PROVIDED BY THE PROFESSIONAL ENGINEER'S OFFICE. THIS DOCUMENT IS NOT TO BE USED FOR ANY OTHER PROJECTS OR PURPOSES WITHOUT THE EXPRESS WRITTEN PERMISSION OF SHAW-WORTHINGTON ASSOCIATES. © 2009 SHAW-WORTHINGTON ASSOCIATES.



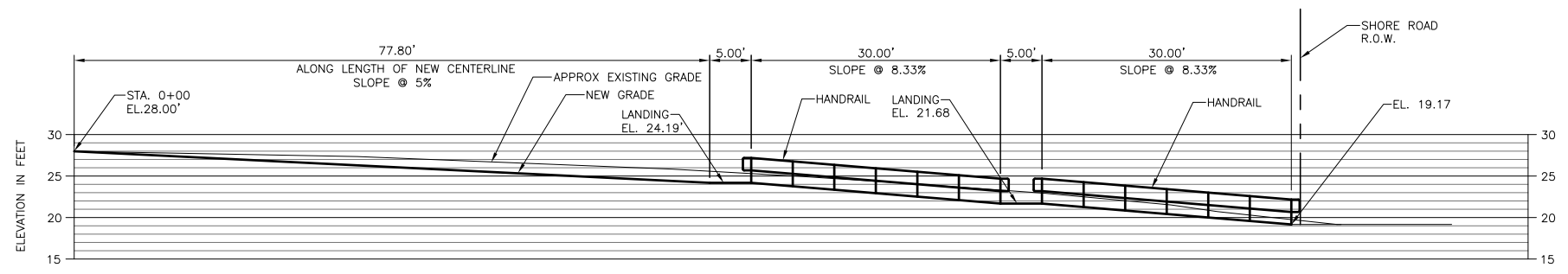
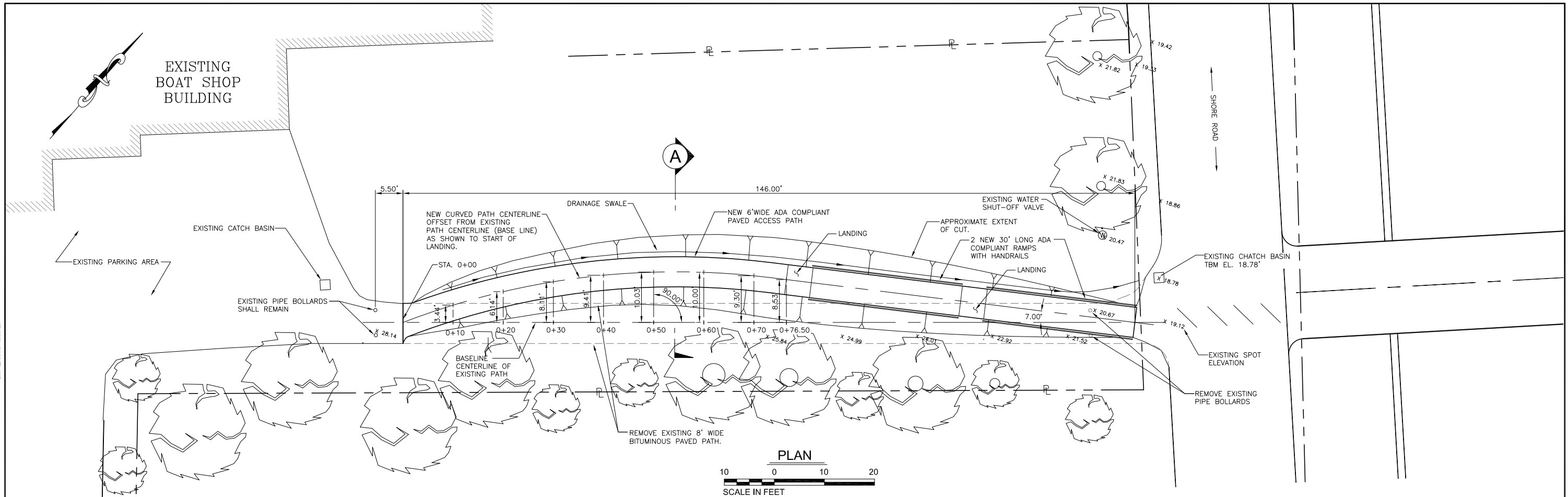
PLAN



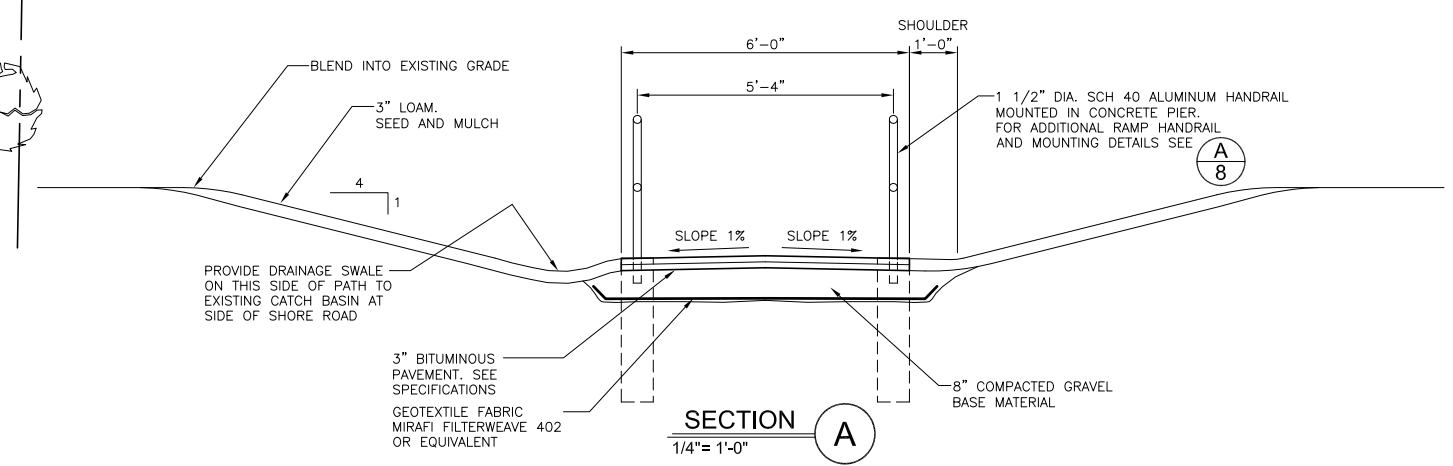
J:\944\013 Drawings Working Drawings\944-013 Sheet 5 M.dwg

		Scale: AS SHOWN	TOWN OF CRANBERRY ISLES MAINE	
		Project No: 944-013		
		AutoCad Release: 2005	ISLAND ACCESS IMPROVEMENTS	
		Filename: 944-013 Sheet 5 M.dwg	TCI MANSET BUILDING GENERAL SITE PLAN	
		Design By: D. QUA		
		Drawn By: D. QUA	 <small>75 Main St., P.O. Box 576 Pittsfield, Maine 04967 Telephone: (207) 487-3328 Fax: (207) 487-3124 www.KleinschmidtUSA.com</small>	
▲	REVISED PATH CONFIGURATION	11-24-09		5
	ISSUED FOR BID	11-09-09		
No.	Revision	Date	Date Revised: 11-21-09	

THIS DOCUMENT IS A SHAW-WORTHINGTON PROJECT FOR THE CONSTRUCTION OF THE TOWN OF CRANBERRY ISLES. IT IS NOT AN INSTRUMENT OF SERVICE OF AN ENGINEER, ARCHITECT, LANDSCAPE ARCHITECT, OR PROFESSIONAL PLANNING FIRM. IT IS NOT TO BE USED FOR ANY OTHER PROJECTS OR PURPOSES WITHOUT THE EXPRESS WRITTEN PERMISSION OF SHAW-WORTHINGTON ASSOCIATES. © 2009 SHAW-WORTHINGTON ASSOCIATES.



NEW ADA PATH LAYOUT TABLE		
EXISTING PATH CENTERLINE STATION	OFFSET DISTANCE TO NEW PATH CENTERLINE	NEW PATH ELEVATIONS
STA. 0+00	0.00'	EL. 28.00'
STA. 0+10	3.44'	EL. 27.50'
STA. 0+20	6.14'	EL. 27.00'
STA. 0+30	8.11'	EL. 26.50'
STA. 0+40	9.41'	EL. 26.00'
STA. 0+50	10.03'	EL. 25.50'
STA. 0+60	10.00'	EL. 25.00'
STA. 0+70	9.30'	EL. 24.50'
STA. 0+76.5	8.53'	EL. 24.19'



Scale: AS SHOWN	Project No: 944-013	TOWN OF CRANBERRY ISLES MAINE
AutoCad Release: 2005	Filename: 944-013 Sheet 7 M.dwg	
Design By: D. QUA	Drawn By: D. QUA	ISLAND ACCESS IMPROVEMENTS
Checked By: HNM	Date Revised: 11-21-09	TCI MANSET BUILDING NEW ADA COMPLIANT ACCESS PATH
REVISION	DATE	 75 Main St., P.O. Box 576 Pittsfield, Maine 04967 Telephone: (207) 487-3328 Fax: (207) 487-3124 www.KleinschmidtUSA.com
1	11-24-09	
2	11-09-09	7

J:\944\013 Drawings Working Drawings\944-013 Sheet 7 M.dwg