

TOWN OF SOUTHWEST HARBOR

LOWER TOWN PIER IMPROVEMENTS  
SOUTHWEST HARBOR, MAINE

ADDENDUM #2

MAY 27, 2009

1. Drawing Sheet 4 -Timber Schedule
  - a. Clarification of anchor bolts to hold the Timber Curb –In the Timber Schedule under the column “Connections” it should read “ $\frac{3}{4}$ ” dia through bolts”. Further, the bolt locations for anchoring the curbs to the deck on the southeast and southwest sides are two bolts at each fender pile into the slab, as shown on Detail 1 on Sheet 7. Spacing of bolts shall be 6'-0" o.c. on the northwest side of the pier where there are no fender piles.
  - b. Anchorage of curbs may also be done using drilled anchors and epoxy grout, at contractors option. Grout must be submitted and reviewed by Engineer.
  
2. Drawing Sheet 5
  - a. Handrail posts are to be 6'-0" o.c. on the North Side Elevation.
  - b. Rails are 2x4 size and located at the top and center of the posts, as shown in enclosed detail.
  - c. All handrail timber shall be pressure treated Southern Pine, No.1 grade. Treatment shall be UC4B ACQ, Copper Azole, or MCQ.
  - d. The pipe pile on the west corner shall be driven open ended to refusal. A welded cap is required on the top but no concrete fill is required. Touchup paint any damage to the coating from driving or welding, using mfr recommended repair material.
  
3. Drawing Sheet 6
  - a. Detail 3 upper left note on the detail should read “NEW GALVANIZED LADDER”.
  - b. Section F/3 does not show the handrail but there should be a handrail on the right side of the detail..
  
4. Drawing Sheet 7
  - a. Section J does not show the complete handrail required on the North side of the pier. Please use the post layout shown on the plan on Sheet 3, and on Detail 2 plan view on Sheet 7.
  - b. Section K does not correctly show the handrail posts at the corners of the platform. Please use the post layout shown on the Detail 2 plan view.
  - c. Handrail posts around the gangway platform shall be connected with (2) –  $\frac{3}{4}$ " dia through bolts to under lying timbers as shown on in Section K.

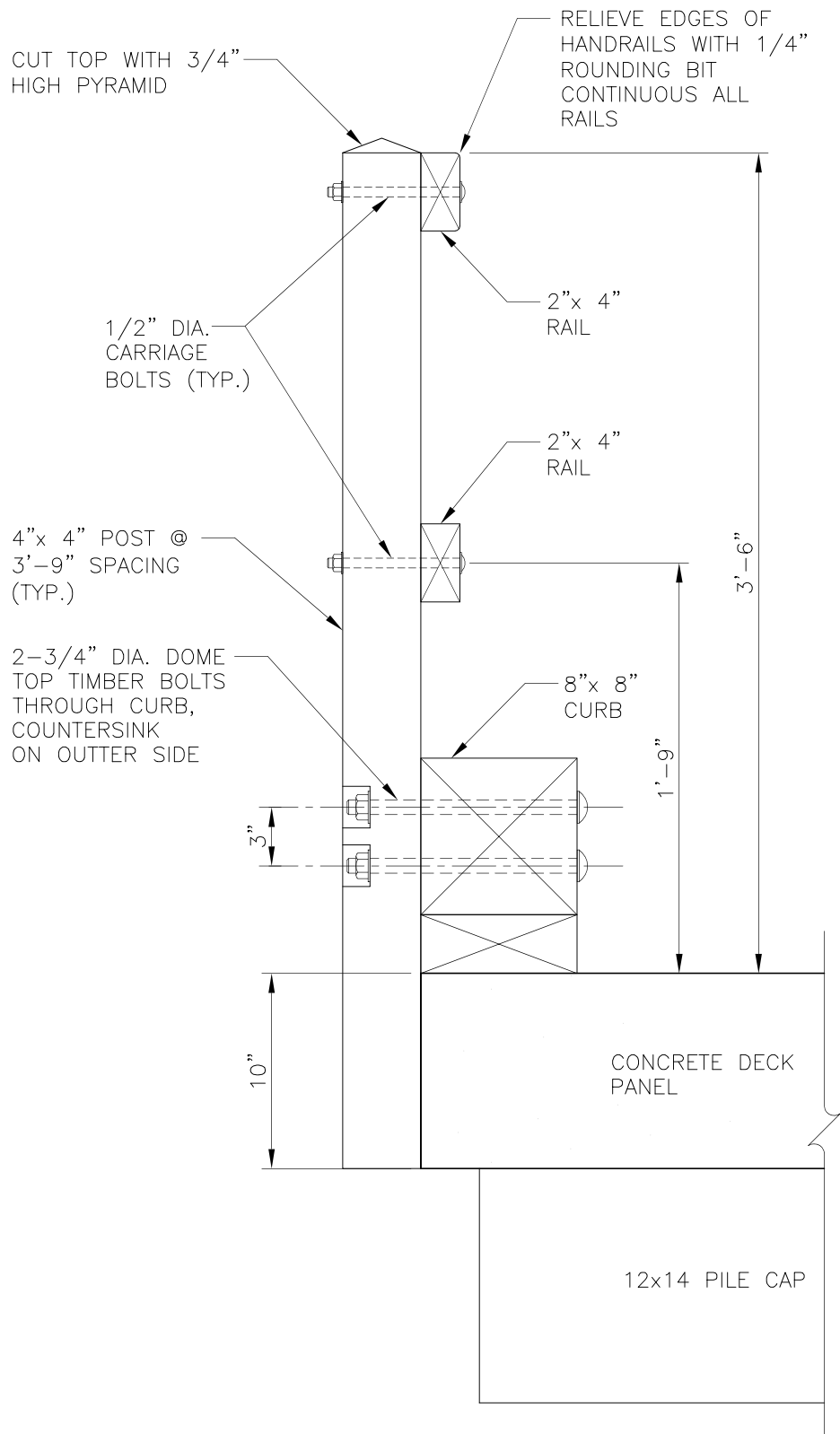
5. Drawing Sheet 8

- a. The northwest side of the Concrete Panel Layout Plan should have a dimension of 48'-3 1/2", the south side should be 51'-0". The panels sit 1' on the existing pier.
- b. Panels 7 through 12 on the Concrete Panel Schedule will each be 1' longer than the dimension in column "A".
- c. Contractor is responsible for field verifying the existing pier angle and panels sizes.

Enclosures: Typical Handrail Post Detail

End of Addendum #2

J:\1510\002\Docs\ADDENDUM #2.doc



**TYPICAL HANDRAIL POST DETAIL**