



STATE OF MAINE  
DEPARTMENT OF TRANSPORTATION  
16 STATE HOUSE STATION  
AUGUSTA, MAINE  
04333-0016

JOHN ELIAS BALDACCI  
GOVERNOR

DAVID A. COLE  
COMMISSIONER

September 28, 2010  
Subject: **Old Town & Orono**  
Federal Project No's: 17729.00 & 17727.00  
State Pin No's: 017729.00 & 017727.00  
**Amendment No. 1**

Dear Sir/Ms:

Make the following changes to the bid Documents:

In the Bid Book (pages 4 and 5), **REMOVE** the "SCHEDULE OF ITEMS", 2 pages dated 100810 and **REPLACE** with the attached new "SCHEDULE OF ITEMS", 3 pages dated 100928.

In the Plans, SHEET NUMBER 1 OF 3, make the following **CHANGES** in pen and ink:

1. Bottom right corner, **CHANGE** "SHEET NUMBER 1 OF 3" to read "**SHEET NUMBER 1 OF 5**"
2. INDEX OF SHEETS; **CHANGE** to read as follows:

Title Sheet.....	1
Old Town Signal Plan.....	2
<b><u>Old Town Notes &amp; Details.....</u></b>	<b><u>3</u></b>
<b><u>Orono Signal Plan.....</u></b>	<b><u>4</u></b>
<b><u>Orono Notes &amp; Details.....</u></b>	<b><u>5</u></b>

In the Plans, **REMOVE** SHEET NUMBER 2 and 3 OF 3 (2 pages total), and **REPLACE** with the attached new Plan Sheets, SHEET NUMBER 2 OF 5 thru SHEET NUMBER 5 OF 5, 4 pages total.

NOTE: Plans will be FedExed/mailed to those who purchased plans in the size and quantity ordered.

Consider these changes and information prior to submitting your bid on October 6, 2010.

Sincerely,

Scott Bickford  
Contracts & Specifications Engineer



PRINTED ON RECYCLED PAPER

SCHEDULE OF ITEMS

REVISED:

CONTRACT ID: 017727.00

PROJECT(S): 017727.00  
017729.00

CONTRACTOR : \_\_\_\_\_

LINE NO	ITEM DESCRIPTION	APPROX. QUANTITY AND UNITS	UNIT PRICE		BID AMOUNT	
			DOLLARS	CTS	DOLLARS	CTS
SECTION 0001 PROJECT ITEMS						
0010	203.20 COMMON EXCAVATION	27.000 CY				
0020	304.10 AGGREGATE SUBBASE COURSE - GRAVEL	18.000 CY				
0030	403.209 HOT MIX ASPHALT 9.5 MM (SIDEWALKS, DRIVES, INCIDENTALS)	4.000 T				
0040	608.10 BRICK SIDEWALK, REMOVE AND REBUILD	4.000 SY				
0050	608.45 CONSTRUCTION SIDEWALK	35.000 SY				
0060	626.21 METALLIC CONDUIT	10.000 LF				
0070	626.22 NON-METALLIC CONDUIT	80.000 LF				
0080	626.32 24 INCH FOUNDATION	2.000 EA				
0090	626.35 CONTROLLER CABINET FOUNDATION	2.000 EA				
0100	643.80 TRAFFIC SIGNALS AT OLD TOWN	LUMP	LUMP			

SCHEDULE OF ITEMS

REVISED:

CONTRACT ID: 017727.00

PROJECT(S): 017727.00

017729.00

CONTRACTOR : \_\_\_\_\_

LINE NO	ITEM DESCRIPTION	APPROX. QUANTITY AND UNITS	UNIT PRICE		BID AMOUNT	
			DOLLARS	CTS	DOLLARS	CTS
0110	643.80 TRAFFIC SIGNALS AT ORONO	LUMP	LUMP			
0120	643.83 VIDEO DETECTION SYSTEM OLD TOWN	LUMP	LUMP			
0130	643.83 VIDEO DETECTION SYSTEM ORONO	LUMP	LUMP			
0140	643.92 PEDESTAL POLE 8 FOOT	2.000 EA				
0150	645.271 REGULATORY, WARNING, CONFIRMATION AND ROUTE MARKER ASSEMBLY SIGNS, TYPE I	30.000 SF				
0160	652.33 DRUM	60.000 EA				
0170	652.34 CONE	60.000 EA				
0180	652.35 CONSTRUCTION SIGNS	300.000 SF				
0190	652.36 MAINTENANCE OF TRAFFIC CONTROL DEVICES	40.000 CD				
0200	652.38 FLAGGER	256.000 HR				
0210	659.10 MOBILIZATION	LUMP	LUMP			

SCHEDULE OF ITEMS

REVISED:

CONTRACT ID: 017727.00

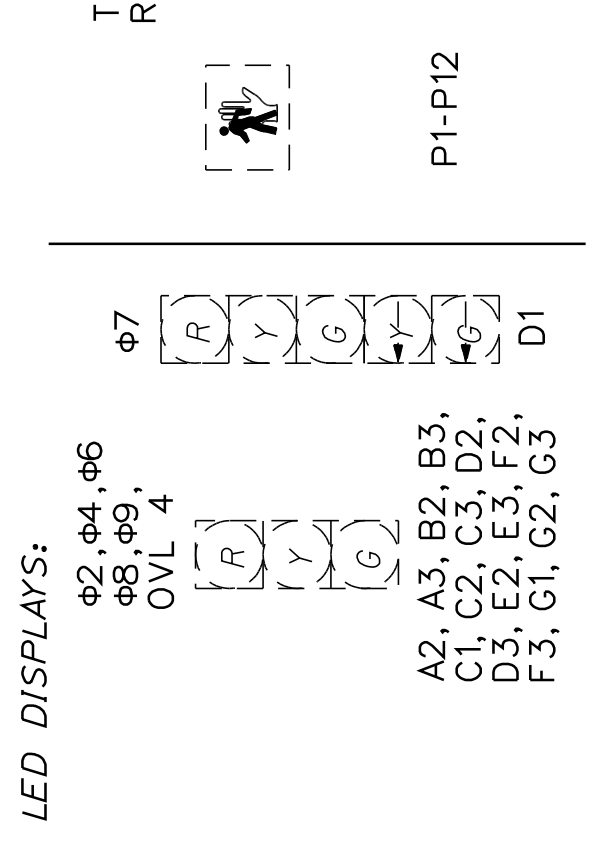
PROJECT(S): 017727.00

017729.00

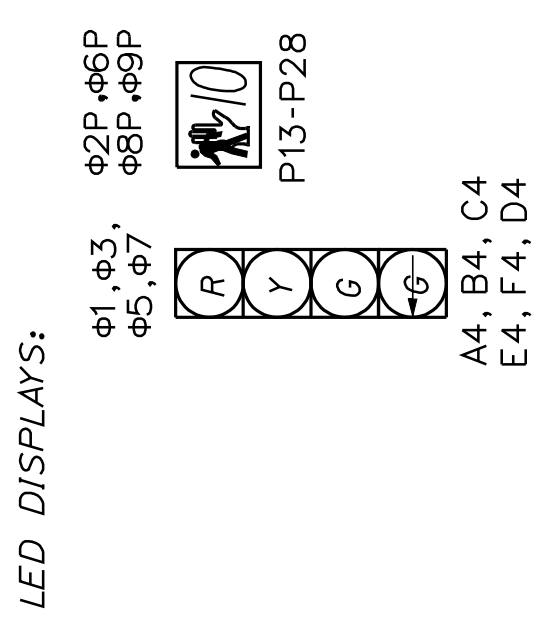
CONTRACTOR : \_\_\_\_\_

LINE NO	ITEM DESCRIPTION	APPROX. QUANTITY AND UNITS	UNIT PRICE		BID AMOUNT	
			DOLLARS	CTS	DOLLARS	CTS
	TOTAL BID					

EXISTING SIGNAL INDICATIONS

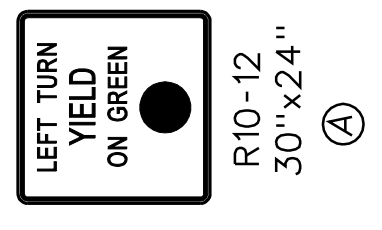


PROPOSED SIGNAL INDICATIONS



NOTE - ALL INDICATIONS SHALL BE 12 INCH. ALL INDICATIONS SHALL BE LIGHT EMITTING DIODES WITH BACK PLATES

PROPOSED SIGNS



SIGNAL TIMING

	Phase 1	Phase 2	Phase 3	Phase 4	Phase 5	Phase 6	Phase 7	Phase 8	Phase 9
Min Green	5	5	5	5	5	5	5	5	5
Extension	3	4	3	3	3	4	5	3	3
Max Green (Plan 1)	10	48	10	15	10	48	10	15	10
Recall Mode (Plan 1)	None	Soft	None	None	None	Soft	None	None	None
Max Green (Plan 2)	10	45	10	15	10	45	10	15	10
Recall Mode (Plan 2)	None	Soft	None	None	None	Soft	None	None	None
Max Green (Plan 3)	10	47	10	33	10	47	15	28	13
Recall Mode (Plan 3)	None	Soft	None	None	None	Soft	None	None	None
Max Green (Plan 4)	10	20	10	15	10	20	10	15	10
Recall Mode (Plan 4)	None	Soft	None	None	None	Soft	None	None	None
Veh. Clear	3	3	3	3	3	3	3	3	3
Red. Clear	2	2	2	2	2	2	2	2	2
Walk	0	5	0	5	0	5	0	5	5
Ped. Clear	0	15	0	17	0	15	0	17	15

\* SIGNAL TO OPERATE ON COLORS AT ALL TIMES  
\* EMERGENCY FLASH ONLY

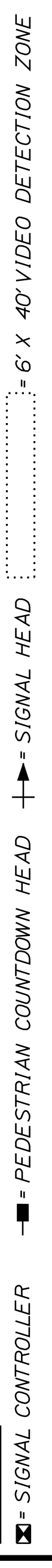
WEEKDAY TOD SCHEDULE

	From	To
Timing Plan 1	6:30 AM	9:00 AM
Timing Plan 2	9:00 AM	2:00 PM
Timing Plan 3	2:00 PM	7:30 PM
Timing Plan 4	7:30 PM	6:30 AM

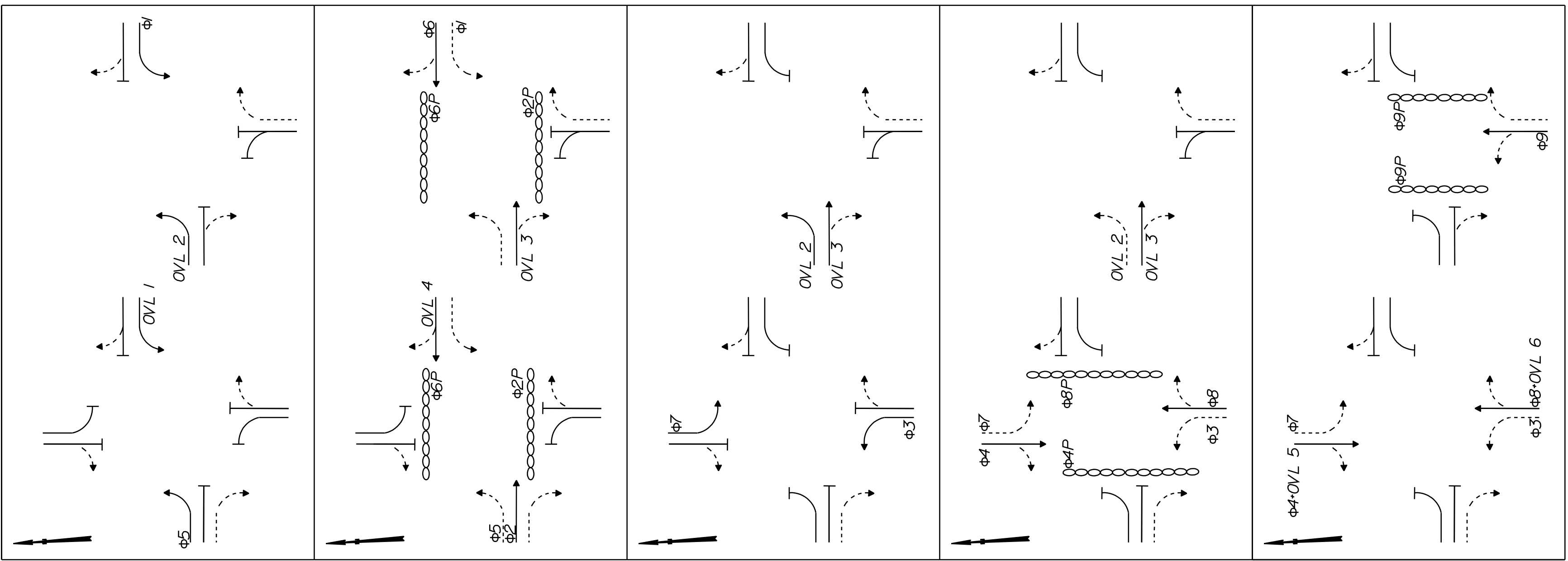
WEEKEND TOD SCHEDULE

	From	To
Timing Plan 2	7:00 AM	7:00 PM
Timing Plan 4	7:00 PM	7:00 AM

LEGEND

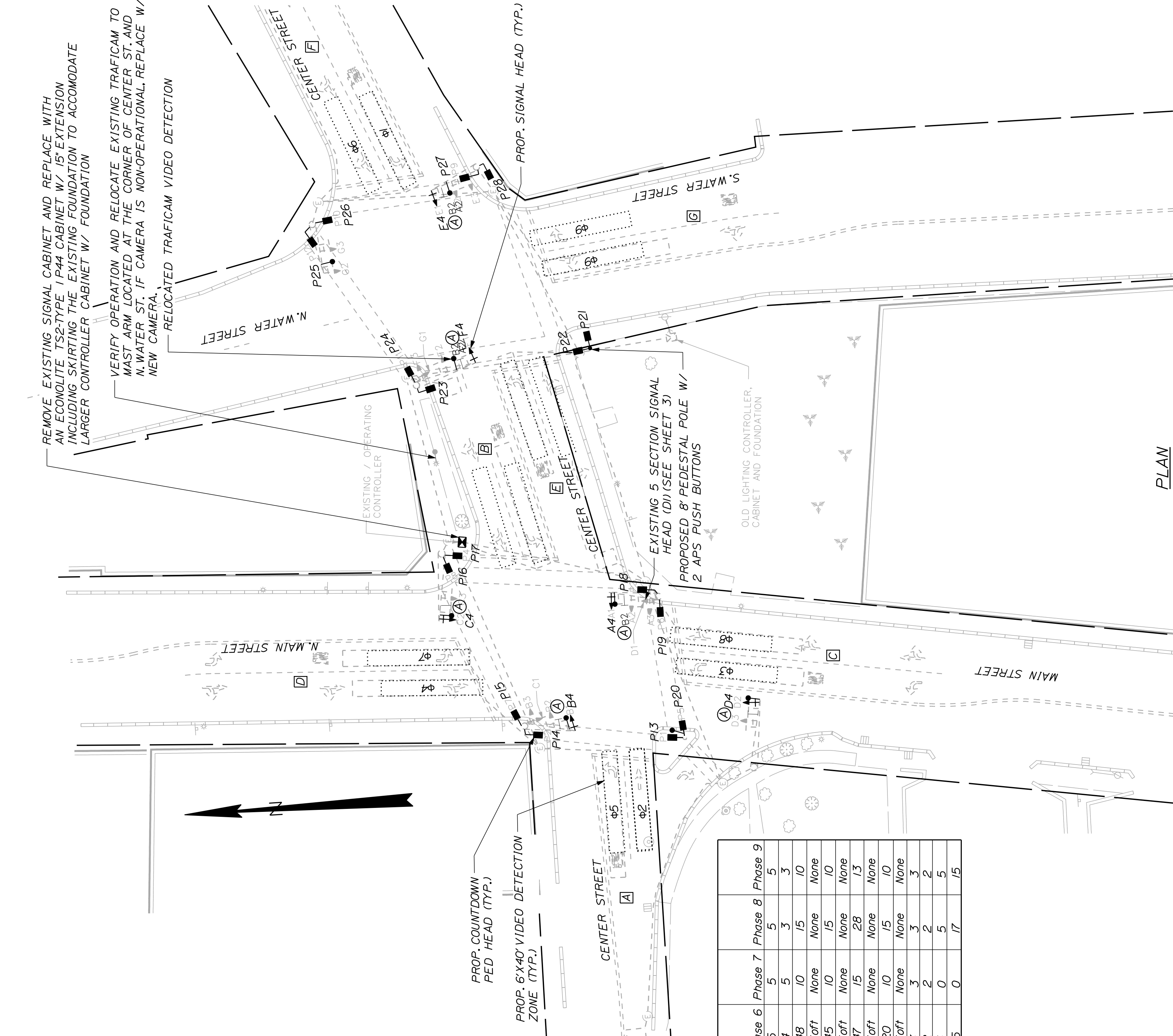


PHASING SEQUENCE



OVL 1 = φ5, φ7  
OVL 2 = φ2, φ8, φ7  
OVL 3 = φ6  
OVL 4 = φ5, φ9  
OVL 5 = φ4, φ9  
OVL 6 = φ3, φ8-OVL 6

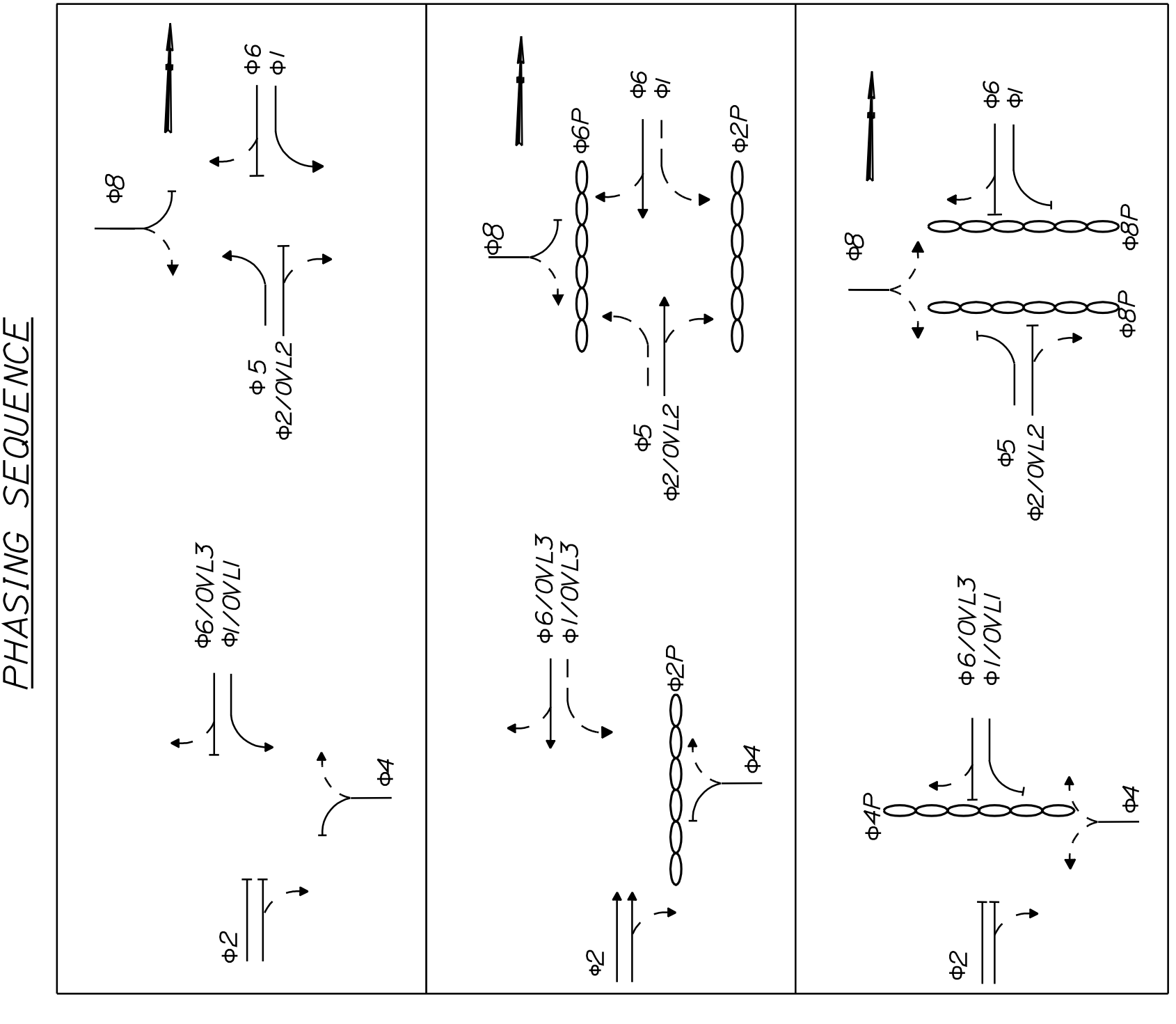
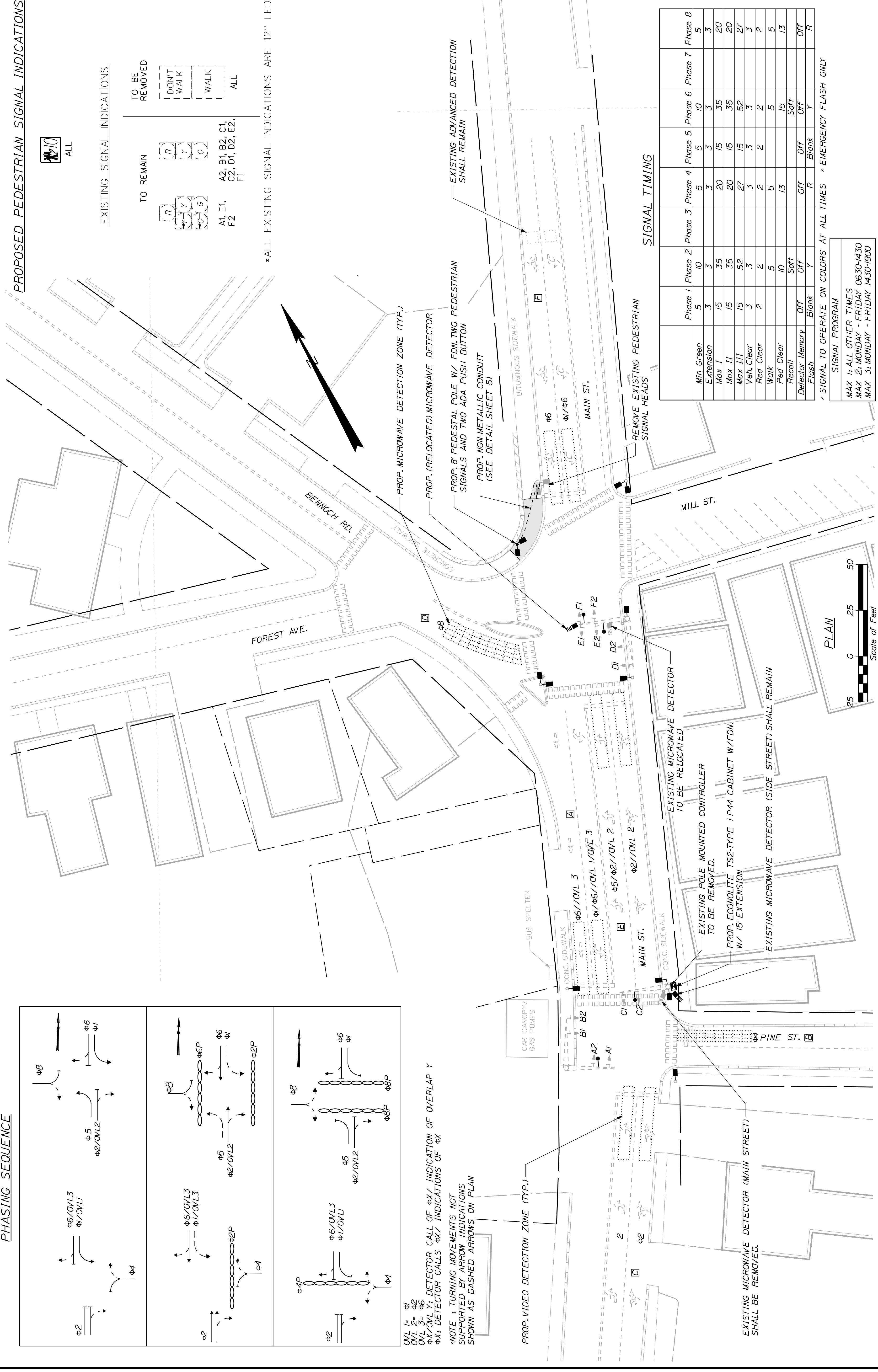
\*NOTE : TURNING MOVEMENTS NOT SUPPORTED BY ARROW INDICATIONS SHOWN AS DASHED ARROWS ON PLAN







PROJ. MANAGER S. L. ANDRY	BY	DATE
CHECKED-REVIEWED B. LYON	J. ADAMS	7-21-10
DESIGN-DETAILS B. LYON	J. ADAMS	7-21-10
DESIGN-DETAILS S. L. ANDRY		
DESIGNS-DETAILS S. L. ANDRY		
REVISIONS 1		
REVISIONS 2		
REVISIONS 3		
REVISIONS 4		
FIELD CHANGES		

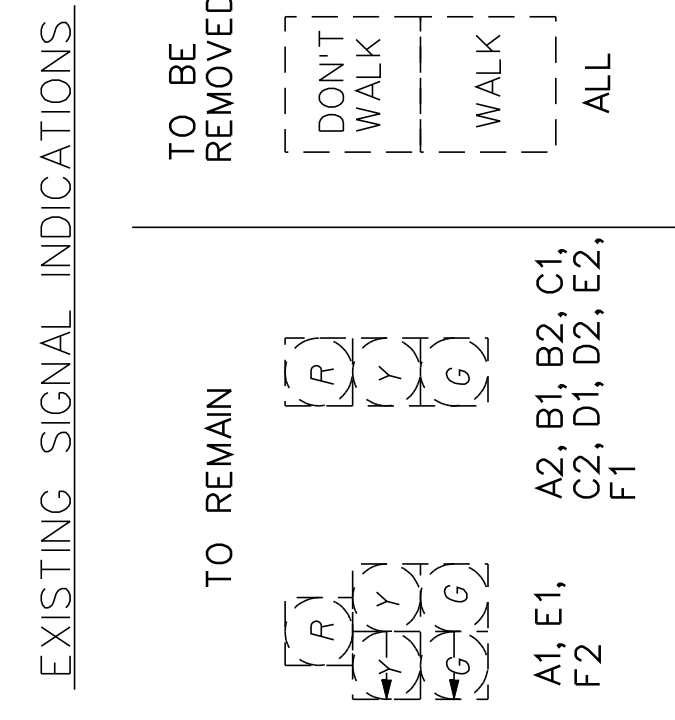


$\phi 1$   
 $\phi 2$   
 $\phi 3$   
 $\phi 4$   
 $\phi 5$   
 $\phi 6$   
 $\phi 7$   
 $\phi 8$

OVL 1 =  $\phi 1$   
 OVL 2 =  $\phi 2$   
 OVL 3 =  $\phi 3$   
 OVL 4 =  $\phi 4$   
 OVL 5 =  $\phi 5$   
 OVL 6 =  $\phi 6$   
 OVL 7 =  $\phi 7$   
 OVL 8 =  $\phi 8$

DETECTOR CALL OF  $\phi X$  / INDICATION OF OVERLAP Y  
 DETECTOR CALLS  $\phi X$  / INDICATIONS OF  $\phi X$

\*NOTE: TURNING MOVEMENTS NOT SUPPORTED BY ARROW INDICATIONS SHOWN AS DASHED ARROWS ON PLAN



**SIGNAL TIMING**

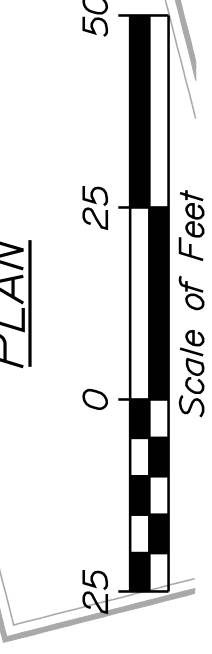
	Phase 1	Phase 2	Phase 3	Phase 4	Phase 5	Phase 6	Phase 7	Phase 8
Min Green	5	10	5	5	5	10	5	5
Extension	3	3	3	3	3	3	3	3
Max 1	15	35	15	20	15	35	20	20
Max 11	15	35	20	15	35	15	35	20
Max 111	15	52	27	15	52	15	52	27
Veh. Clear	3	3	3	3	3	3	3	3
Red Clear	2	2	2	2	2	2	2	2
Walk	5	5	5	5	5	5	5	5
Ped Clear	10	10	13	13	15	15	13	13
Recall	Off	Soft	Off	Off	Soft	Off	Off	Off
Detector Memory	Off	Off	Off	Off	Off	Off	Off	Off
Flash	Blank	Y	Blank	R	Blank	Y	Blank	R

\* SIGNAL TO OPERATE ON COLORS AT ALL TIMES \* EMERGENCY FLASH ONLY

**SIGNAL PROGRAM**

MAX 1: ALL OTHER TIMES 0630-1430  
 MAX 2: MONDAY - FRIDAY 0630-1430  
 MAX 3: MONDAY - FRIDAY 1430-1900

\* ALL EXISTING SIGNAL INDICATIONS ARE 12" LED.  
 \* SIGNAL TO OPERATE ON COLORS AT ALL TIMES \* EMERGENCY FLASH ONLY



**LEGEND**

- VIDEO DETECTION ZONES  
 - MICROWAVE DETECTION ZONE  
 - MAST ARM  
 - VIDEO DETECTION  
 - RADAR DETECTION  
 - SIGNAL CONTROLLER  
 - PEDESTRIAN COUNTDOWN HEAD  
 - SIGNAL HEAD  
 - TRAFFIC SIGNAL CONDUIT  
 - PEDESTAL POLE

