



STATE OF MAINE  
DEPARTMENT OF TRANSPORTATION  
16 STATE HOUSE STATION  
AUGUSTA, MAINE  
04333-0016

JOHN ELIAS BALDACCI  
GOVERNOR

DAVID A. COLE  
COMMISSIONER

June 22, 2010  
Subject: **Bangor & Brewer**  
Federal Project No: IM-1709(900)E &  
IM-1710(000)E  
State Pin No: 017099.00 & 017100.00  
**Amendment No. 1**

Dear Sir/Ms:

Make the following changes to the bid documents:

In the Bid Book (pages 4 thru 9), **REMOVE** the "SCHEDULE OF ITEMS", 6 pages dated 100604 and **REPLACE** with the attached new "SCHEDULE OF ITEMS", 6 pages dated 100622.

In the Bid Book (page 86), **REMOVE** "SPECIAL PROVISION, SECTION 515, (ACRYLIC ANTI-CARBONATION COATING), 1 page dated May 26, 2010 and **REPLACE** with the attached new "SPECIAL PROVISION, SECTION 515, (ACRYLIC ANTI-CARBONATION COATING), 1 page dated June 7, 2010.

In the Bid Book, after page 90, **ADD** the attached "SPECIAL PROVISION, SECTION 521, FINGER JOINTS AND FABRIC TROUGH/FABRIC CURTAIN, (Fabric Covering for Concrete Surfaces)", 2 pages dated June 21, 2010.

In the Bid Book (pages 103 and 104), **REMOVE** and disregard "SPECIAL PROVISION, SECTION 620, EXCAVATION AND EMBANKMENT, (HDPE Geomembrane)", 2 pages dated May 25, 2010.

In the Plans, **REPLACE** the following Plan Sheets with the attached new Plan Sheets;  
SHEET NUMBER 2 OF 28  
SHEET NUMBER 17 OF 28  
SHEET NUMBER 18 OF 28

Note: Plan Sheets will be mailed/FedExed to those who purchased Plan Sheets in the quantity and size ordered.

The following question has been received:

**Question:** Can you advise on where to find details for finger joints?




PRINTED ON RECYCLED PAPER

**Response:** Most details for the finger joints are covered by standard details. See MaineDOT standard detail book pages 521(01) to 521(11) for details of finger joints. For project specific details regarding the finger joints see the following pages of the plans: Pages 13, 17, 18 and 19.

Consider these changes and information prior to submitting your bid on June 30, 2010.

Sincerely,

  
Scott Bickford  
Contracts & Specifications Engineer

FOR

SCHEDULE OF ITEMS

REVISED:

CONTRACT ID: 017099.00

PROJECT(S): IM-1709(900)E

IM-1710(000)E

CONTRACTOR : \_\_\_\_\_

LINE NO	ITEM DESCRIPTION	APPROX. QUANTITY AND UNITS	UNIT PRICE		BID AMOUNT	
			DOLLARS	CTS	DOLLARS	CTS
SECTION 0001 PROJECT ITEMS						
0010	202.12 REMOVING EXISTING STRUCTURAL CONCRETE	CY 298.000				
0020	202.18 REMOVE EXISTING BITUMINOUS PAVEMENT (INCLUDING MEMBRANE)	LUMP	LUMP			
0030	203.25 GRANULAR BORROW	CY 325.000				
0040	206.082 STRUCTURAL EARTH EXCAVATION - MAJOR STRUCTURES	CY 305.000				
0050	304.09 AGGREGATE BASE COURSE - CRUSHED	CY 380.000				
0060	403.207 HOT MIX ASPHALT 19.0 MM HMA	T 400.000				
0070	403.2081 12.5 MM POLYMER MODIFIED HOT MIX ASPHALT	T 400.000				
0080	403.2131 12.5 MM POLYMER MODIFIED HMA BASE	T 550.000				
0090	409.15 BITUMINOUS TACK COAT - APPLIED	G 450.000				

SCHEDULE OF ITEMS

REVISED:

CONTRACT ID: 017099.00

PROJECT(S): IM-1709(900)E

IM-1710(000)E

CONTRACTOR : \_\_\_\_\_

LINE NO	ITEM DESCRIPTION	APPROX. QUANTITY AND UNITS	UNIT PRICE		BID AMOUNT	
			DOLLARS	CTS	DOLLARS	CTS
0100	502.219 STRUCTURAL CONCRETE, ABUTMENTS AND RETAINING WALLS	LUMP	LUMP			
0110	502.31 STRUCTURAL CONCRETE APPROACH SLABS	LUMP	LUMP			
0120	502.341 STRUCTURAL CONCRETE ROADWAY MEDIAN	6.000 CY				
0130	502.3412 STRUCTURAL CONCRETE, RAISED ISLAND	1.000 CY				
0140	502.49 STRUCTURAL CONCRETE CURBS AND SIDEWALK	LUMP	LUMP			
0150	503.12 REINFORCING STEEL, FABRICATED AND DELIVERED	18500.000 LB				
0160	503.13 REINFORCING STEEL, PLACING	18500.000 LB				
0170	507.10 ALUMINUM BRIDGE RAILING - REMOVE AND RESET	20.000 LF				
0180	508.14 HIGH PERFORMANCE WATERPROOFING MEMBRANE	LUMP	LUMP			
0190	510.301 EXPRESSWAY MEDIAN CROSSOVER	LUMP	LUMP			

SCHEDULE OF ITEMS

REVISED:

CONTRACT ID: 017099.00

PROJECT(S): IM-1709(900)E

IM-1710(000)E

CONTRACTOR : \_\_\_\_\_

LINE NO	ITEM DESCRIPTION	APPROX. QUANTITY AND UNITS	UNIT PRICE		BID AMOUNT	
			DOLLARS	CTS	DOLLARS	CTS
0200	515.21 PROTECTIVE COATING FOR CONCRETE SURFACES	LUMP	LUMP			
0210	515.21 PROTECTIVE COATING FOR CONCRETE SURFACES ACRYLIC ANTI-CARBONATION COATING	LUMP	LUMP			
0220	518.50 REPAIR OF UPWARD FACING SURFACES - TO REINFORCING STEEL < 7.9 IN.	SF 70.000				
0230	520.245 BRIDGE JOINT MODIFICATION TYPE 5	EA 3.000				
0240	521.23 EXPANSION DEVICE FINGER JOINT TYPE "C"	EA 1.000				
0250	521.23 EXPANSION DEVICE FINGER JOINT TYPE "E"	EA 1.000				
0260	521.32 FABRIC TROUGH FOR FINGER JOINT	EA 2.000				
0270	521.51 FABRIC COVERING FOR CONCRETE SURFACES	LUMP	LUMP			
0280	526.301 TEMPORARY CONCRETE BARRIER TYPE I	LUMP	LUMP			
0290	526.3401 PERMANENT CONCRETE TRANSITION BARRIER - MODIFIED	EA 6.000				

SCHEDULE OF ITEMS

REVISED:

CONTRACT ID: 017099.00

PROJECT(S): IM-1709(900)E

IM-1710(000)E

CONTRACTOR : \_\_\_\_\_

LINE NO	ITEM DESCRIPTION	APPROX. QUANTITY AND UNITS	UNIT PRICE		BID AMOUNT	
			DOLLARS	CTS	DOLLARS	CTS
0300	527.34 WORK ZONE CRASH CUSHIONS	10.000 UN				
0310	606.1721 BRIDGE TRANSITION - TYPE 1	14.000 EA				
0320	606.178 GUARDRAIL BEAM	1000.000 LF				
0330	606.24 GUARDRAIL TYPE 3D - SINGLE RAIL	75.000 LF				
0340	606.3581 GUARDRAIL, MODIFY EXISTING TO TYPE 3D	9500.000 LF				
0350	606.369 GUARDRAIL REMOVED AND STACKED	1000.000 LF				
0360	609.38 RESET CURB TYPE 1	20.000 LF				
0370	610.18 STONE DITCH PROTECTION	20.000 CY				
0380	619.1401 EROSION CONTROL MIX	40.000 CY				
0390	620.58 EROSION CONTROL GEOTEXTILE	40.000 SY				

SCHEDULE OF ITEMS

REVISED:

CONTRACT ID: 017099.00

PROJECT(S): IM-1709(900)E

IM-1710(000)E

CONTRACTOR : \_\_\_\_\_

LINE NO	ITEM DESCRIPTION	APPROX. QUANTITY AND UNITS	UNIT PRICE		BID AMOUNT	
			DOLLARS	CTS	DOLLARS	CTS
0400	627.733 4" WHITE OR YELLOW PAINTED PAVEMENT MARKING LINE	18500.000 LF				
0410	627.76 TEMPORARY PVMT. MARK LINE, W OR YELLOW	LUMP	LUMP			
0420	629.05 HAND LABOR, STRAIGHT TIME	80.000 HR				
0430	631.12 ALL PURPOSE EXCAVATOR (INCLUDING OPERATOR)	40.000 HR				
0440	631.15 ROLLER, EARTH AND BASE COURSE (INCLUDING OPERATOR )	40.000 HR				
0450	631.172 TRUCK - LARGE (INCLUDING OPERATOR)	40.000 HR				
0460	635.14 PREFABRICATED CONCRETE MODULAR GRAVITY WALL	1700.000 SF				
0470	639.18 FIELD OFFICE TYPE A	1.000 EA				
0480	643.72 TEMPORARY TRAFFIC SIGNAL	LUMP	LUMP			
0490	652.30 FLASHING ARROW BOARD	2.000 EA				
0500	652.312 TYPE III BARRICADE	60.000 EA				

SCHEDULE OF ITEMS

REVISED:

CONTRACT ID: 017099.00

PROJECT(S): IM-1709(900)E

IM-1710(000)E

CONTRACTOR : \_\_\_\_\_

LINE NO	ITEM DESCRIPTION	APPROX. QUANTITY AND UNITS	UNIT PRICE		BID AMOUNT	
			DOLLARS	CTS	DOLLARS	CTS
0510	652.33 DRUM	90.000 EA				
0520	652.34 CONE	90.000 EA				
0530	652.35 CONSTRUCTION SIGNS	600.000 SF				
0540	652.361 MAINTENANCE OF TRAFFIC CONTROL DEVICES	LUMP	LUMP			
0550	652.38 FLAGGER	1000.000 HR				
0560	652.381 TRAFFIC OFFICER	150.000 HR				
0570	652.41 PORTABLE CHANGEABLE MESSAGE SIGN	2.000 EA				
0580	656.75 TEMPORARY SOIL EROSION AND WATER POLLUTION CONTROL	LUMP	LUMP			
0590	659.10 MOBILIZATION	LUMP	LUMP			
	SECTION 0001 TOTAL					
	TOTAL BID					



SPECIAL PROVISION  
SECTION 515  
(ACRYLIC ANTI-CARBONATION COATING)

Description This work consists of furnishing and installing an acrylic anti-carbonation coating for concrete protection to existing vertical concrete surfaces at the bridge seats of the Veterans Remembrance Bridge, at Pier No. 2 and Abutment No. 2, as described below and as directed by the Resident. The work shall be done in accordance with the Maine Department of Transportation Standard Specifications, Section 515 Protective Coating for Concrete Surfaces.

MATERIALS

The coating material used shall be a Type 2a coating from the Maine Department of Transportation Qualified Products List – Concrete Sealers.

Method of Measurement Protective coating for Concrete Surfaces, Acrylic Anti-Carbonation will be measured for payment by the square yard, satisfactorily applied and accepted.

Basis of Payment Costs Protective coating for Concrete Surfaces, Acrylic Anti-Carbonation will be paid for by the square yard as specified.

Payment will be made under:

<u>Pay Item</u>	<u>Pay Unit</u>
515.21 Protective Coating for Concrete Surfaces, Acrylic Anti-Carbonation	L.S.

SPECIAL PROVISION  
SECTION 521  
FINGER JOINTS AND FABRIC TROUGH/FABRIC CURTAIN  
(Fabric Covering for Concrete Surfaces)

521.01 Description

The following paragraph is added:

“This work shall also include workmanlike installation of Fabric Covering for Concrete Surfaces as shown in the Plans or as directed by the Resident. The work also includes the cleaning of concrete surfaces, the application of Lubricant Adhesive to the concrete surfaces to be covered, the installation of Fabric Trough material as the concrete protective covering and the sealing of Fabric Covering edges.”

MATERIALS

The following subsection is added:

521.041 Materials Fabric Covering for Concrete Surfaces Materials shall meet the requirements specified in the following subsections:

Fabric Trough or Curtain	521.04
Sealant	714.04

The Lubricant Adhesive shall be a one-component, moisture-curing polyurethane compound extended with aromatic hydrocarbon solvent meeting the requirements of the most recently published ASTM D4070 specification. If the ASTM D4070 does not provide a greater film strength requirement, the Film Strength shall meet or exceed 1200 psi as determined by ASTM D412.

CONSTRUCTION REQUIREMENTS

The following subsection is added:

521.061 Construction of Fabric Covering for Concrete Surfaces

The existing concrete surfaces to be covered shall be free of laitance, oil, grease, dirt, and dust. The Contractor shall thoroughly clean surfaces to be covered by power washing, acid washing, or other means as directed by the Resident.

Lubricant Adhesive shall be applied as directed by the manufacturer. If there are no ready manufacturer's directions for this type of installation, the Contractor must submit installation directions including application rates developed in consultation with the Lubricant Adhesive manufacturer to the Department for approval.

The Fabric Covering material, laminated woven nylon covered in layers of neoprene rubber, shall be trimmed to fit within 1/8 inch to all adjacent upward vertical surfaces. Where the covering abuts a downward vertical surface, the material shall be extended over the downward face a minimum of 1/2 inch. Where practical, the projecting half inch shall be adhered to the downward vertical surface as directed by the Resident. If the stiffness of the Fabric Covering causes it to pull away from the horizontal or sloped surface, when it is adhered to the downward surface, the Contractor may allow the half inch excess to project over the downward surface in the remainder of the applications.

For each section of Fabric Covering, three of four edges will match to upward vertical faces. These three edges of each Fabric Covering section shall be sealed with an elastomeric, non-sag, polyurethane-based sealant meeting Standard Specifications subsection 714.04

521.07 Method of Measurement

The following paragraph shall be added:

“Fabric Covering for Concrete Surfaces will be measured for payment by the Square Yard or Lump Sum Unit as specified, satisfactorily applied and accepted.”

521.08 Basis of Payment

The following paragraph shall be added:

“Fabric Covering for Concrete Surfaces will be paid for at the contract unit price per Square Yard or Lump Sum Unit as specified. Payment shall be considered full compensation for all work and materials necessary to complete the work.”

Payment will be made under:

<u>Pay Item</u>	<u>Pay Unit</u>
521.51 Fabric Covering for Concrete Surfaces	L.S.

ITEM NO.	DESCRIPTION	ESTIMATED QUANTITIES			UNIT
		17099.00	17100.00	TOTAL	
202.12	REMOVING EXISTING STRUCTURAL CONCRETE	6	292	298	CY
202.18	REMOVE EXISTING BITUMINOUS PAVEMENT (INCLUDING MEMBRANE)	2850	1300	1	LS
203.25	GRAVULAR BORROW	0	325	325	CY
206.082	STRUCTURAL EARTH EXCAVATION - MAJOR STRUCTURES	25	280	305	CY
304.09	AGGREGATE BASE COURSE - CRUSHED	15	365	380	CY
403.207	HOT MIX ASPHALT 19.0 MM HMA	200	200	400	T
403.2081	12.5 MM POLYMER MODIFIED HOT MIX ASPHALT	250	150	400	T
403.2131	12.5 MM POLYMER MODIFIED HMA BASE	340	210	550	T
409.15	BITUMINOUS TACK COAT - APPLIED	300	150	450	G
502.219	STRUCTURAL CONCRETE ABUTMENTS AND RET. WALLS	-	240	1	LS
502.31	STRUCTURAL CONCRETE APPROACH SLABS	3	110	1	LS
502.341	STRUCTURAL CONCRETE ROADWAY MEDIAN	-	3	6	CY
502.3412	STRUCTURAL CONCRETE, RAISED ISLAND	1	-	1	CY
502.49	STRUCTURAL CONCRETE CURBS AND SIDEWALK	1	3	1	LS
503.12	REINFORCING STEEL, FABRICATED AND DELIVERED	1100	17400	18500	LB
503.13	REINFORCING STEEL, PLACING	1100	17400	18500	LB
507.10	ALUMINUM BRIDGE RAIL, REMOVE & RESET	0	20	20	LF
508.14	HIGH PERFORMANCE WATERPROOFING MEMBRANE	1560	-	1	LS
510.301	EXPRESSWAY MEDIAN CROSSOVER	-	280	1	LS
515.21	PROTECTIVE COATING FOR CONCRETE SURFACES	110	540	1	LS
518.50	REPAIR OF UPWARD FACING SURFACES - TO REINFORCING STEEL < 7.9 IN.	70	-	70	SF
520.245	BRIDGE JOINT MODIFICATION TYPE 5	2	1	3	EA
521.23	EXPANSION DEVICE FINGER JOINT - TYPE "C"	0	1	1	EA
521.23	EXPANSION DEVICE FINGER JOINT - TYPE "E"	0	2	2	EA
521.32	FABRIC TROUGH FOR FINGER JOINT (2100 LF)	0	1800	1	LS
526.301	TEMPORARY CONCRETE BARRIER TYPE 1	3	3	6	EA
527.34	WORK ZONE CRASH CUSHIONS	5	5	10	EA
521.51	FABRIC COVERING FOR CONCRETE SURFACES	-	90	1	LS
606.1721	BRIDGE TRANSITION - TYPE 1	7	7	14	EA
606.178	GUARDRAIL BEAM	250	750	1000	LF
606.24	GUARDRAIL TYPE 3D - SINGLE RAIL	25	50	75	LF
606.3581	GUARDRAIL, MODIFY EXISTING TO TYPE 3D	2400	7100	9500	LF
606.369	GUARDRAIL, REMOVED AND STACKED	250	750	1000	LF
609.38	RESET CURB TYPE 1	20	0	20	LF
610.18	STONE DITCH PROTECTION	0	20	20	CY
619.1401	EROSION CONTROL MIX	0	40	40	CY
620.58	EROSION CONTROL GEOTEXTILE	0	40	40	CY
627.733	4 INCH WHITE OR YELLOW PAINTED PAVE MARK LINE	2000	16500	18500	LF
629.05	TEMPORARY PAVT. MARK LINE, WHITE OR YELLOW	-	-	1	LS
629.05	HAND LABOR, STRAIGHT TIME	40	40	80	HR
631.12	ALL PURPOSE EXCAVATOR (INCLUDING OPERATOR)	20	20	40	HR
631.15	ROLLER, EARTH AND BASE COURSE (INCLUDING OPERATOR)	20	20	40	HR
631.172	TRUCK - LARGE (INCLUDING OPERATOR)	20	20	40	HR
635.14	PREFABRICATED CONCRETE MODULAR GRAVITY WALL	0	1700	1700	SF
639.18	FIELD OFFICE TYPE A	0.5	0.5	1	EA
643.72	TEMPORARY TRAFFIC SIGNAL	1	0	1	LS
652.30	FLASHING ARROW BOARD	1	1	2	EA
652.312	TYPE III BARRICADE	20	40	60	EA
652.33	DRUM	40	50	90	EA
652.34	CONE	40	50	90	EA
652.35	CONSTRUCTION SIGNS	300	300	600	SF
652.361	MAINTENANCE OF TRAFFIC CONTROL DEVICES	90	90	1	LS
652.38	FLAGGER	500	500	1000	HR
652.381	TRAFFIC OFFICERS	75	75	150	HR
652.41	PORTABLE CHANGEABLE MESSAGE SIGN	1	1	2	EA
656.75	TEMPORARY SOIL EROSION AND WATER POLLUTION CONTROL	-	-	1	LS
659.10	MOBILIZATION	-	-	1	LS

GENERAL CONSTRUCTION NOTES

- The existing bridge plans may be accessed at the MaineDOT web address. The plans are reproductions of the original drawings as prepared for the construction of the bridge. It is very unlikely that the plans will show any construction field changes or any alterations which may have been made to the bridge during its life span.
- All dimensions based on or relating to the existing bridges shall be verified in the field by the Contractor, i.e., existing joint opening, joint length and backwall width.
- The Contractor shall use care not to damage the existing reinforcing steel which is to remain. Any damaged reinforcing steel shall be replaced as directed by the Resident at no expense to the Department.
- Reinforcing Steel Schedules will be the responsibility of the Contractor. Refer to Subsection 503.03 of the Standard Specifications for more information. Payment for all work associated with developing reinforcing steel schedules will be considered incidental to related Contract Items.
- The reinforcing steel for drilled and anchored bars shall be paid for under Items 503.12 and 503.13. No separate payment will be made for drilling and anchoring.
- Reinforcing steel shall have 2 inches cover unless otherwise noted.
- Protective Coating for Concrete Surfaces shall be applied to the following areas of new concrete:  
All exposed surfaces of concrete curbs, fascia down to the drip notch, raised median, All exposed surfaces of Concrete Transition Barriers & Median Barrier, 12 inches below the top of backwalls and wings on the back side, Exposed concrete surfaces of expansion devices.
- Embedment depth for each bar size shall be in conformance to pre-approved anchoring product manufacturer's recommendations.
- Payment for all work and materials used in the removal of each modular joint and the adjacent existing bridge materials to the lines shown on the plans shall be considered incidental to the respective finger joint pay item. Pay Item 521.23 Expansion Device - Finger Joint, Type E, and Pay Item 521.23 Expansion Device - Finger Joint, Type C.
- The "Expansion Device - Finger Joint, Type E" consists of two superstructure elements with expansion dams as required. The "Expansion Device - Finger Joint, Type C" consists of one superstructure element and one substructure element with expansion dams as required.
- For Veterans Remembrance Bridge the expansion/contraction lengths to be used for calculating the temperature-adjusted opening settings are: 867 feet for the Type E finger joint at Pier #2; and 571 feet for the Type C finger joint at Abutment #2.
- Payment for any pavement used for the crossover is considered incidental to Pay Item No. 510.301 Expressway Median Crossover. Payment for all pavement used for other maintenance of traffic efforts, such as temporary pavement over bridge drains for lane shifts, is considered incidental to the contract, in accordance with the Special Provisions Section 652. Pay limits for the pavement pay items are the lines shown on the "Approach Longitudinal Pavement Section" on Sheets #4 and #13, and to the Main Street Bridge surface.
- All abutment concrete placed above the expansion device construction joints, as shown in Sections A-A through E-E on Sheet #15 and as shown on the "Abutment No. 2 Expansion Joint on Sheet #11", shall be Class LP concrete at no additional cost to the State.
- All aluminum bridge rail, rail posts, and associated hardware which are to be removed shall be carefully salvaged by the Contractor and will remain the property of the Department. Payment will be considered incidental to related Contract Items.
- Wooden offset blocks should be used for the Bridge Transition Type 1 in the median barrier areas. Cutting of the wooden blocks will be necessary to minimize bending and warping of the three-beam transitions. Payment for field fitting the wooden offset blocks will be considered incidental to related contract items.
- The glare screens in the area of reconstructing the median barriers for the bridge joint modifications and end treatments shall be removed. All associated hardware shall be carefully salvaged by the Contractor and will remain the property of the Department. Payment will be considered incidental to related Contract Items.
- The existing memorial plaques embedded within the concrete end posts on Veterans Remembrance Bridge shall be carefully removed and reinstalled into the new transition barriers. Payment shall be considered incidental to Item 526.3401, Permanent Concrete Transition Barrier - Modified.
- The work at Veterans Remembrance Bridge requires sufficient earth excavation to remove and replace all approach slabs and the abutment backwalls down to the bridge seats, and sufficient earth excavation for the replacement of the Abutment No. 1 left wingwall, the post-tensioned wingwall at the Northwest corner. At Main Street Bridge, sufficient earth excavation behind both abutment backwalls is required for the Bridge Joint Modifications. All of this earth excavation will be paid for under Pay Item No. 206.082, Structural Earth Excavation - Major Structures. Earth excavation at the other three Veterans Remembrance Bridge wingwalls is considered paid under Pay Item No. 653.14, Prefabricated Concrete Modular Gravity Wall.
- The quantity of approach roadway pavement removal as shown in the plans shall be included for pavement with the Main Street Bridge pavement removal under Pay Item No. 202.18, Remove Existing Pavement (Including Membrane).
- Minimum splice lengths shall be 21 inches for #5 reinforcing bars and 25 inches for #6 reinforcing bars. Minimum embedment lengths shall be 15 inches for #5 reinforcing bars and 18 inches for #6 reinforcing bars, unless a drill and grout anchoring system with shorter bar lengths is approved by the Resident.

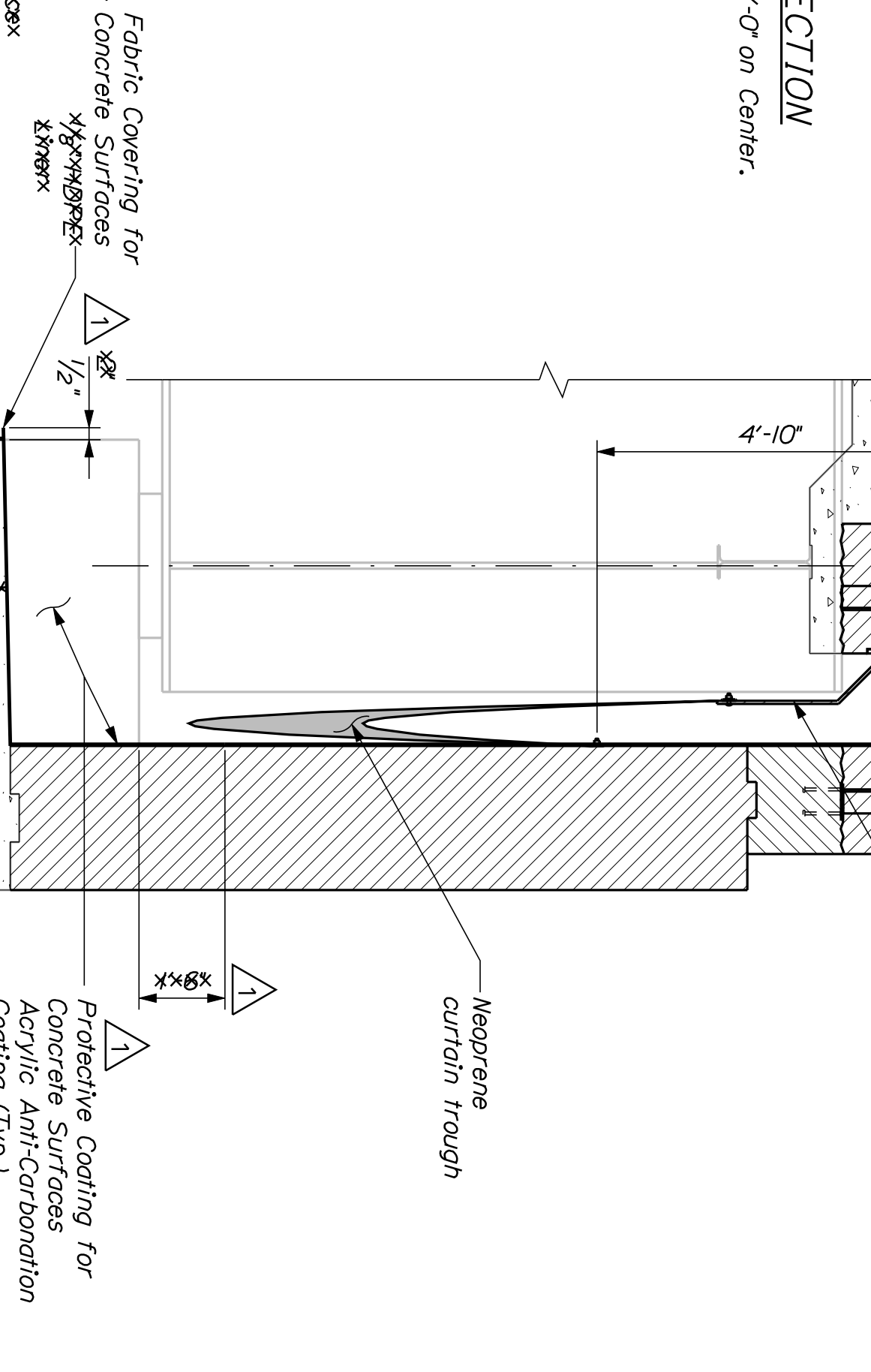
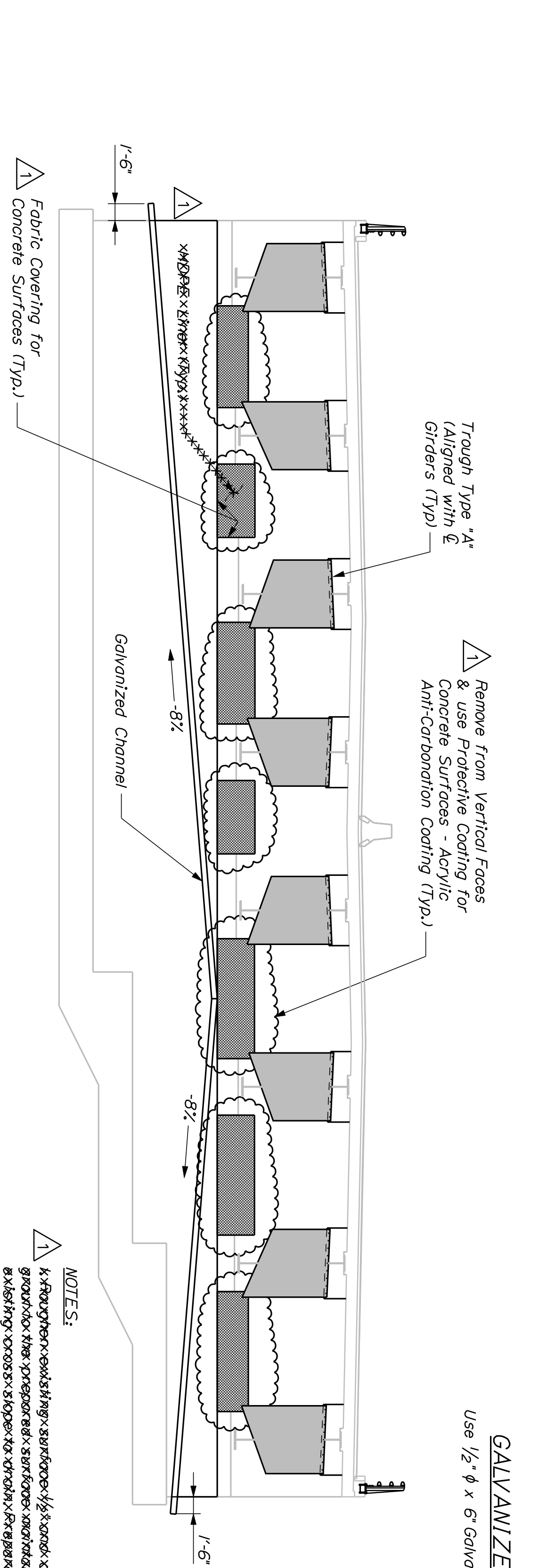
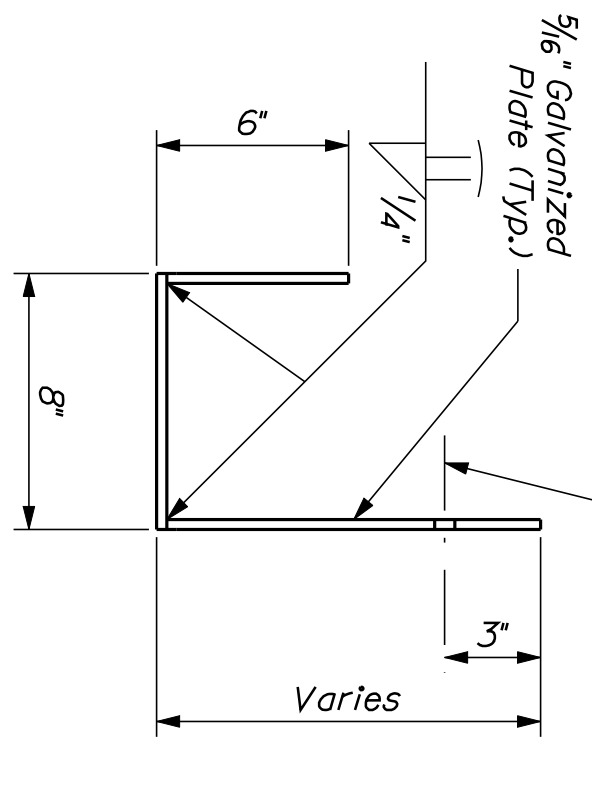
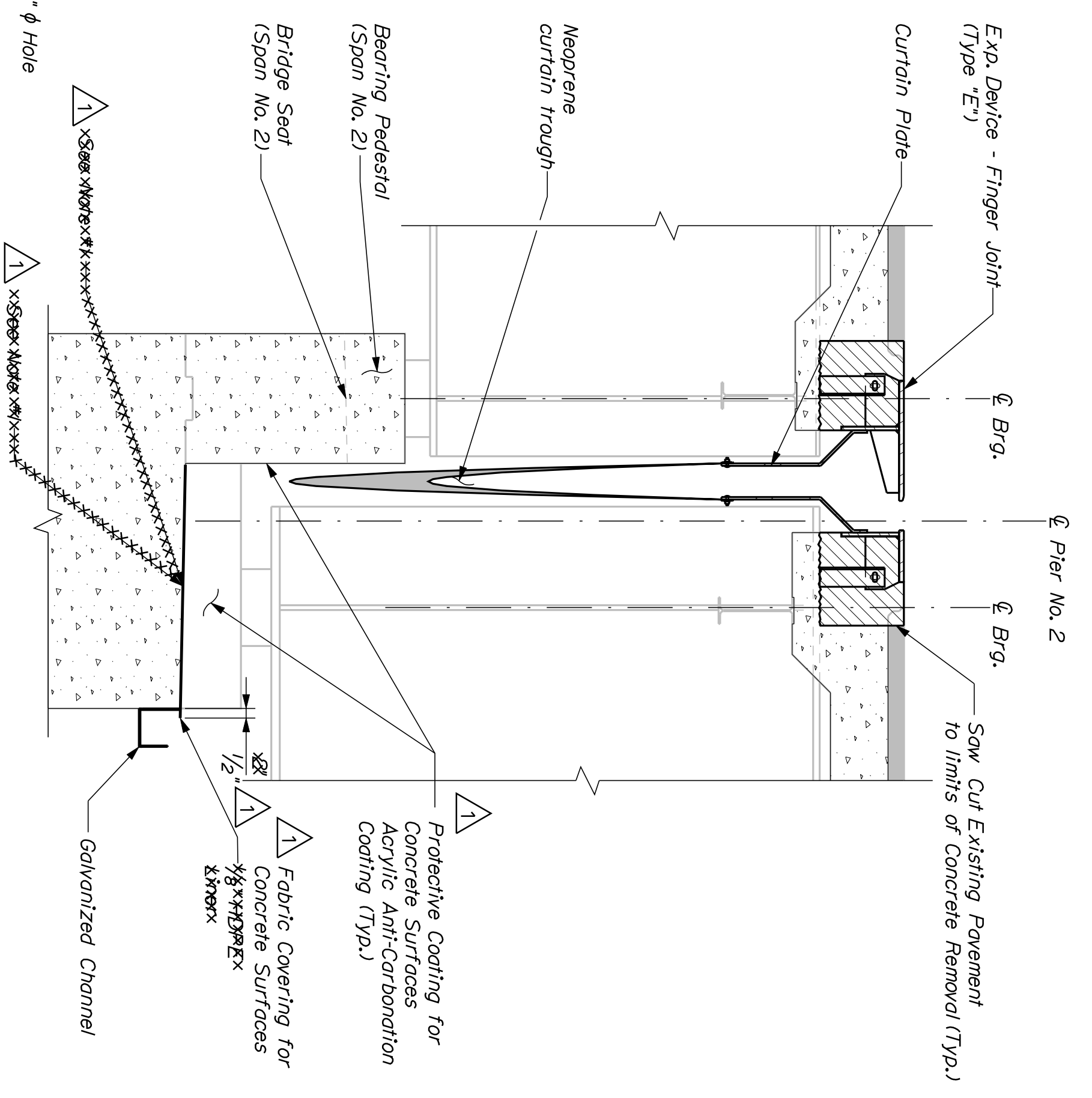
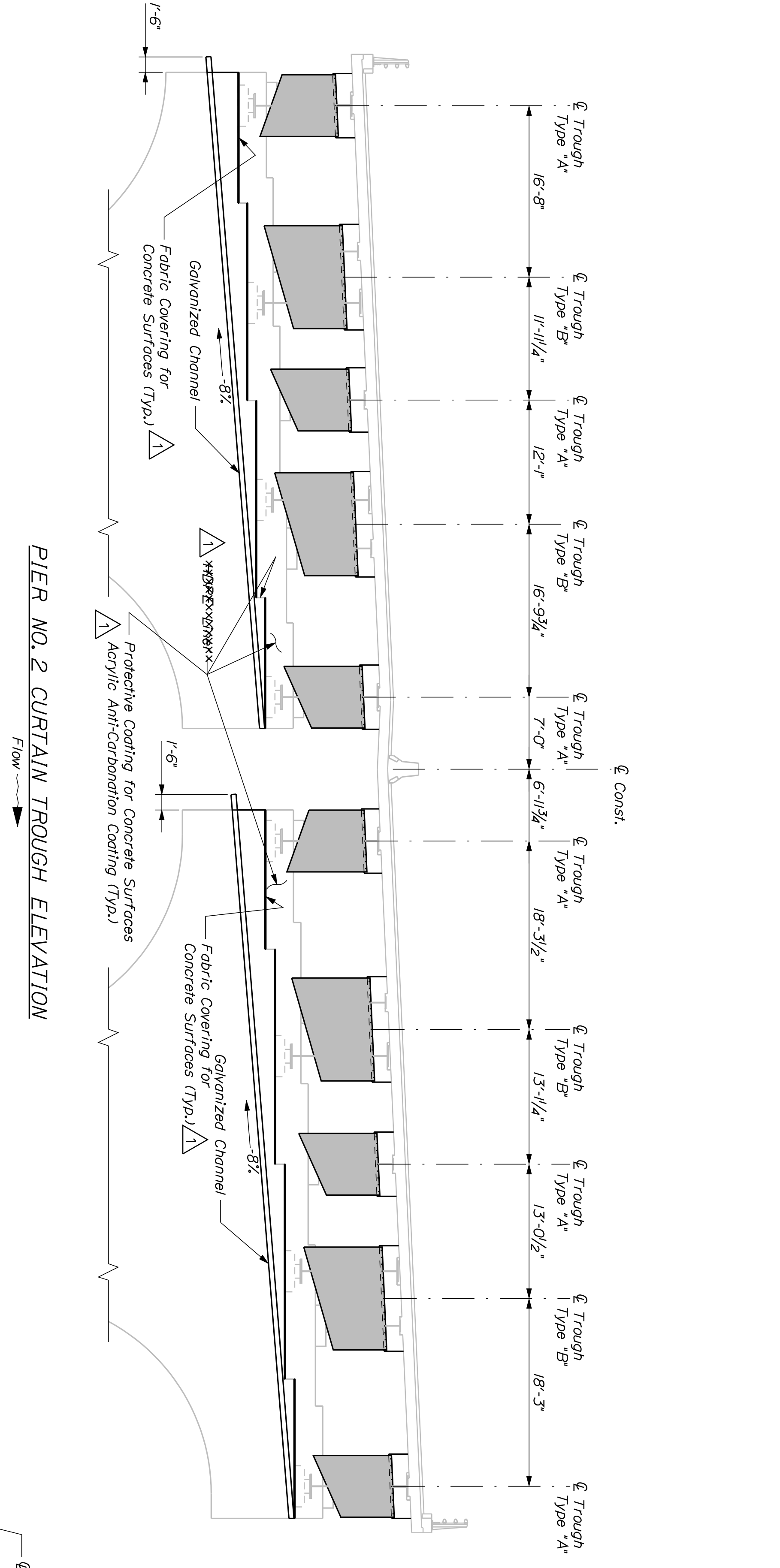
STATE OF MAINE  
DEPARTMENT OF TRANSPORTATION  
**IM-1709(900)E & IM-1710(000)E**  
BRIDGE NO. 5799 PIN  
BRIDGE NO. 1558 **17099.00 & 17100.00** BRIDGE PLANS

PROJ. MANAGER S. BODGE BY DATE  
DESIGN-DETAILED R. BULGER R. NIMON 05/2/2010  
CHECKED-REVIEWED  
DESIGN2-DETAILED2  
DESIGN3-DETAILED3  
REVISIONS/ R/JN-ITEM CHANGES 6/21/2010  
REVISIONS 2  
REVISIONS 3  
REVISIONS 4  
FIELD CHANGES

SIGNATURE  
P.E. NUMBER  
DATE

MAIN STREET & VETERANS REMEMBRANCE BRIDGE  
MAIN STREET & PENOBSCOT RIVER  
BANGOR - BREWER PENOBSCOT COUNTY  
**ESTIMATED QUANTITIES**

SHEET NUMBER  
**2**  
OF 28



**NOTES:**

1. Protective Coating for Concrete Surfaces - Acrylic Anti-Carbonation Coating shall be applied to the **inside** vertical face of the pier cap adjacent to the troughs of Pier No. 2 and all vertical faces of the lower bearing pedestals for Pier No. 2.
2. Protective Coating for Concrete Surfaces - Acrylic Anti-Carbonation Coating shall be applied to the **inside** vertical face of the pier cap adjacent to the troughs of Pier No. 2 and all vertical faces of the lower bearing pedestals for Pier No. 2.

VETERANS REMEMBRANCE BRIDGE  
 PENOBSCOT RIVER  
 BANGOR-BREWER PENOBSCOT COUNTY  
**EXPANSION JOINT & CURTAIN TROUGH DETAILS**

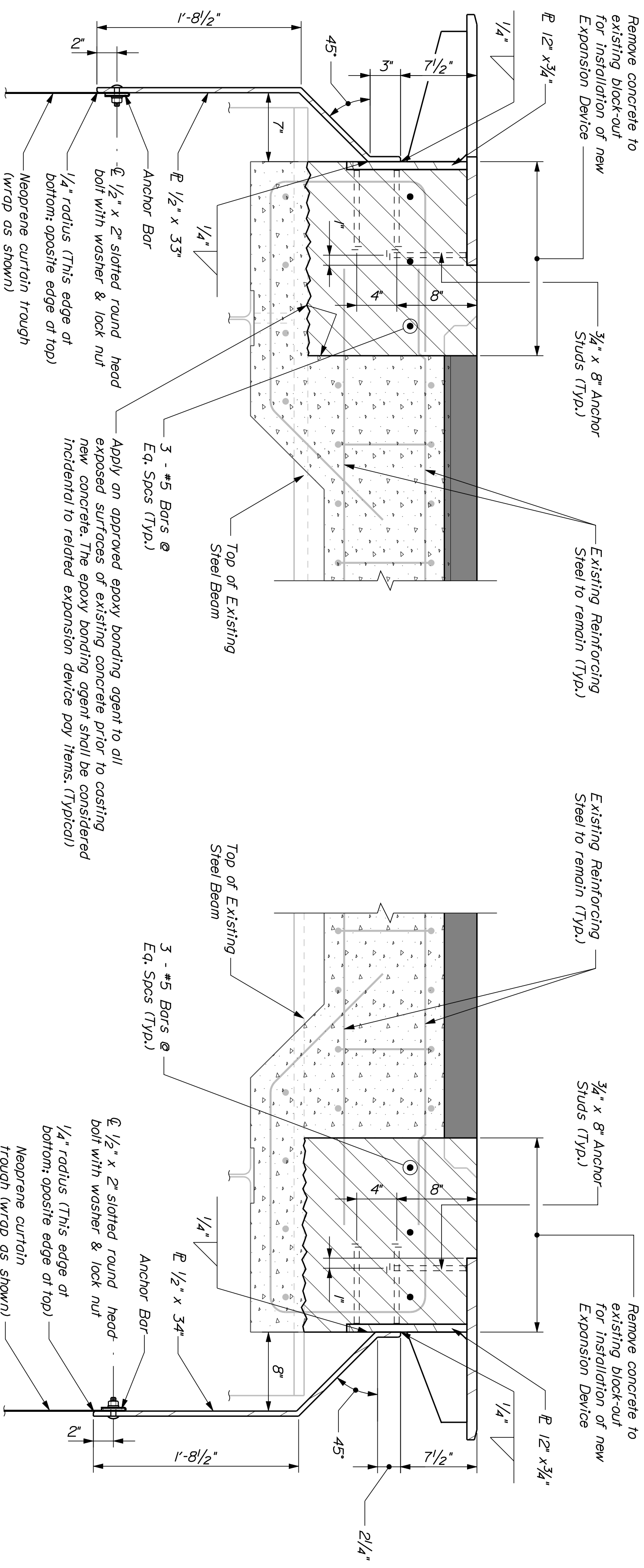
PROJ. MANAGER	S. BODGE	BY	DATE
DESIGN-DETAILED	R. BULGER	R. NIMON	05/2010
CHECKED-REVIEWED			
DESIGN2-DETAILED2			
DESIGN3-DETAILED3			
REVISIONS	RUN-CHANGED MATERIAL	6/21/2010	
REVISIONS 2			
REVISIONS 3			
REVISIONS 4			
FIELD CHANGES			

SIGNATURE \_\_\_\_\_  
 P.E. NUMBER \_\_\_\_\_  
 DATE \_\_\_\_\_

STATE OF MAINE  
 DEPARTMENT OF TRANSPORTATION  
**IM-A710(000)E**  
 PIN 17100.00  
 BRIDGE NO. 1558

SHEET NUMBER  
**17**  
 OF 28



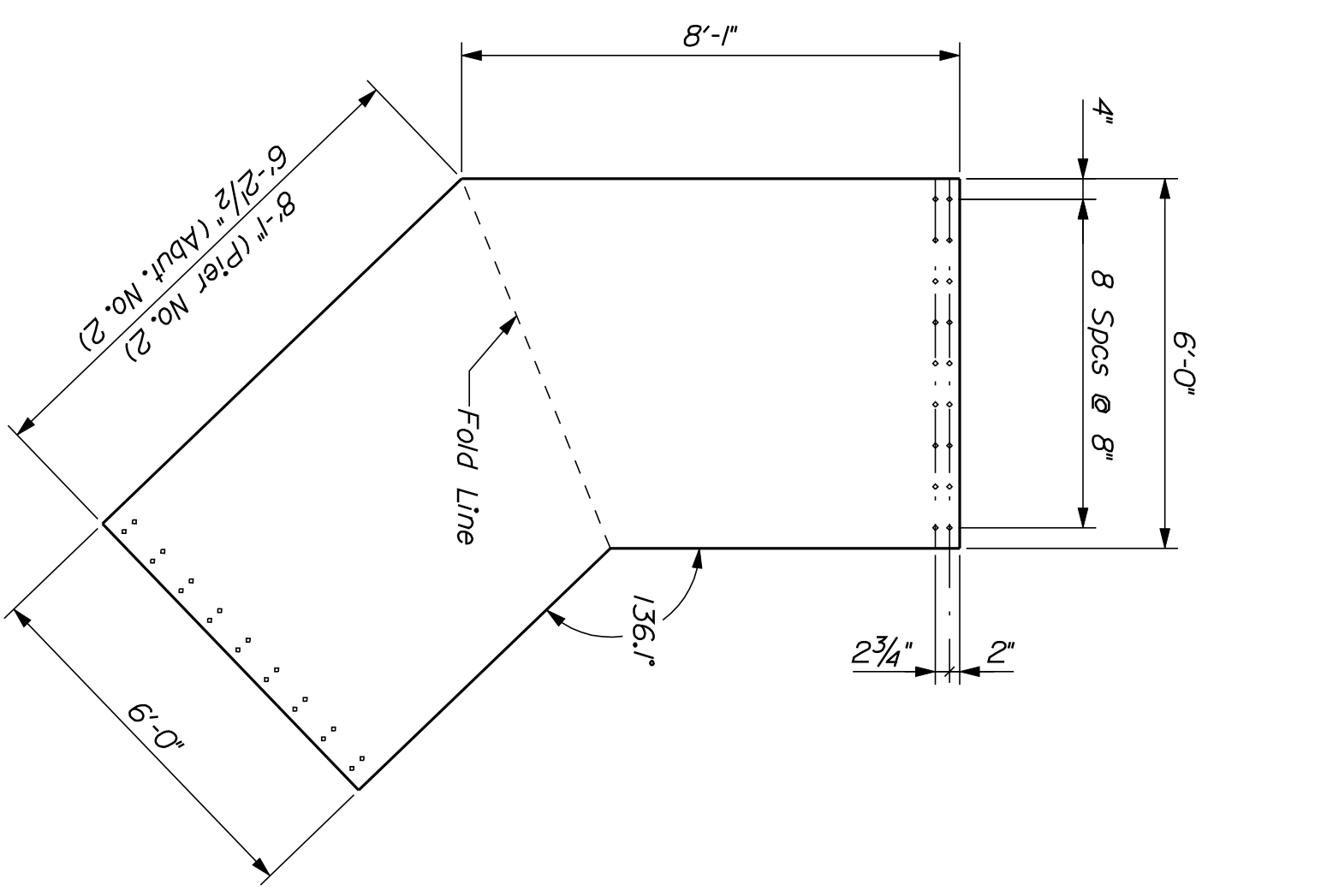


PIER NO. 2 CURTAIN PLATE DETAIL

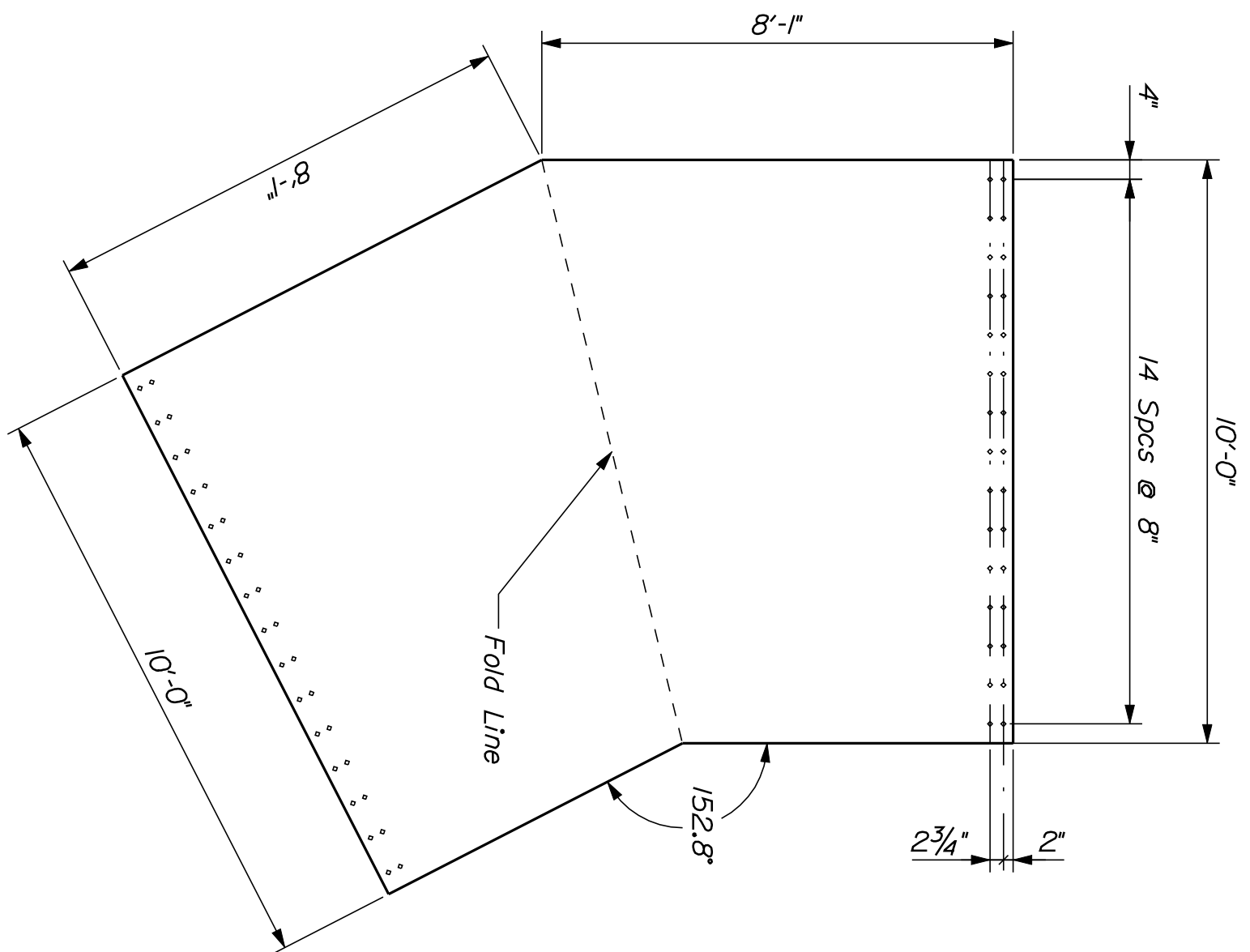
ABUTMENT NO. 2 CURTAIN PLATE DETAIL

**EXPANSION DEVICE AND CURTAIN TROUGH NOTES**

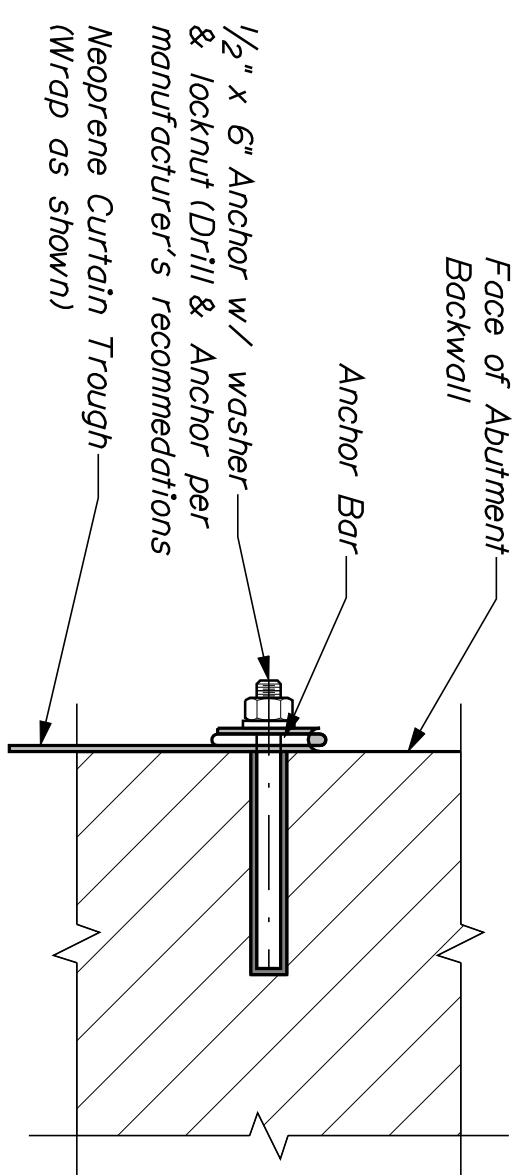
1. Provide one Expansion Device - Finger Joint (Type "E") at Pier No. 2, and one Expansion Device - Finger Joint (Type "C") at Abutment No. 2. Construct Finger Joints in accordance with Standard Details Section 52i.
2. Curb Expansion Dams shall be constructed in accordance with the Standard Details. Additional Expansion Dams will be required for the Median Barrier at each Pier No. 2 and Abutment No. 2. Median Barrier Expansion Dams shall be constructed in accordance with design drawings. For details not shown, refer to Standard Details.
3. Fabrication and materials for the curtain trough, including galvanization of steel components, shall be in accordance with the provisions of Section 52i of the Standard Specification.
4. Payment for curtain plates shall be considered incidental to the respective Expansion Device - Finger Joint pay item.
5. Payment for one set of curtain troughs for each joint (one set of ten(10) for Pier No. 2 & one set of eight (8) for Abutment No. 2), including anchor bars and hardware, will be made under Item No. 52i.32, Fabric Trough for Finger Joint.
6. Joints at the top corners of the Median Barrier Expansion Dams shall be welded in accordance with the Standard Details. Any other corners of the Median Barrier profile may be fabricated from single bent plates or multiple welded plates at the Contractor's option.
7. Joints at the top corners of the Median Barrier Expansion Dams shall be welded in accordance with the Standard Details. Any other corners of the Median Barrier profile may be fabricated from single bent plates or multiple welded plates at the Contractor's option.
8. Joints at the top corners of the Median Barrier Expansion Dams shall be welded in accordance with the Standard Details. Any other corners of the Median Barrier profile may be fabricated from single bent plates or multiple welded plates at the Contractor's option.
9. Payment for all work and materials required to provide the galvanized channels as shown on the plans shall be considered incidental to Pay Item, 52i.32 Fabric Trough for Finger Joint.
10. Refer to Standard Details Sections 52i for details and information not shown.



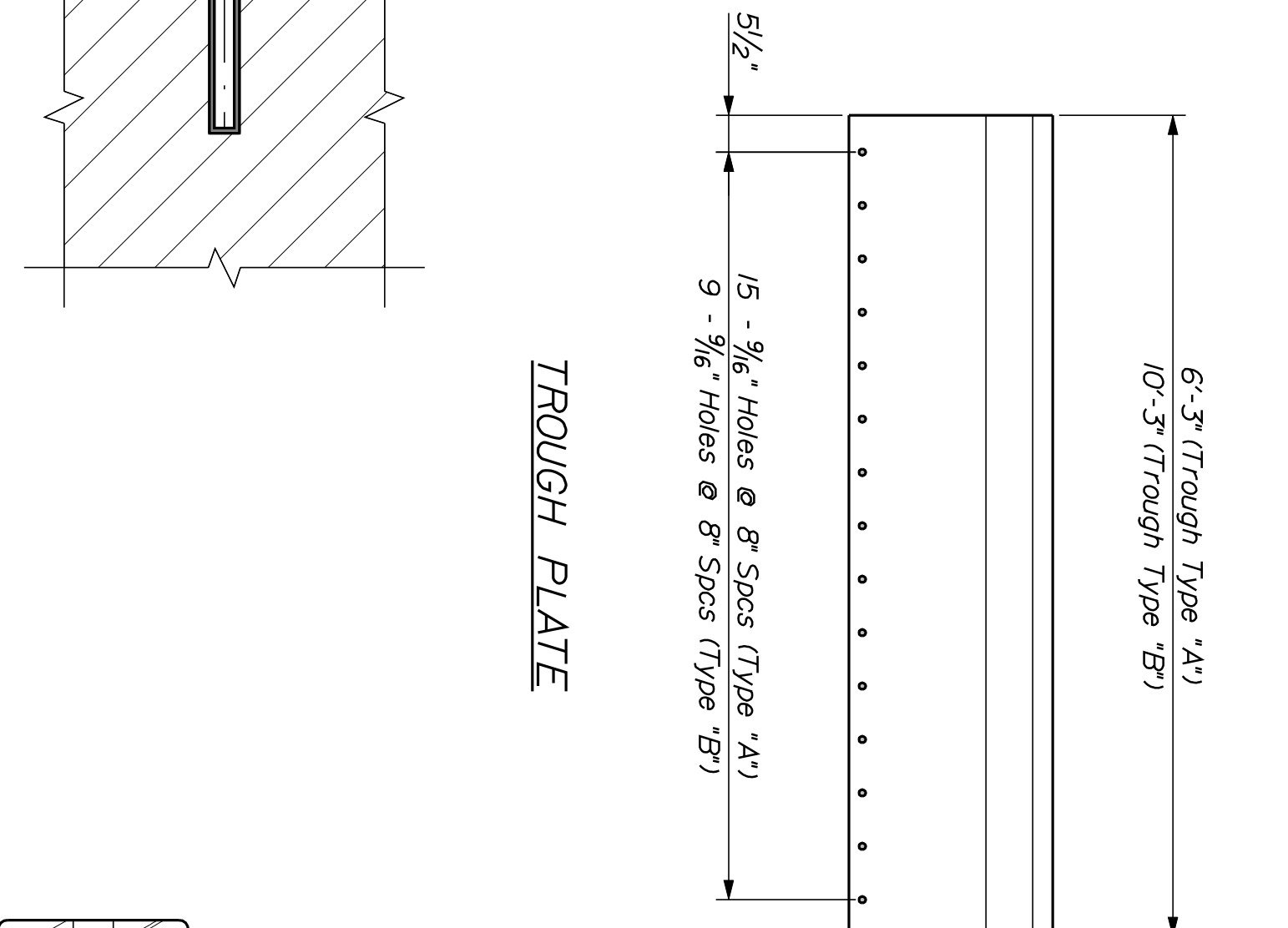
NEOPRENE SHEET Trough "A"



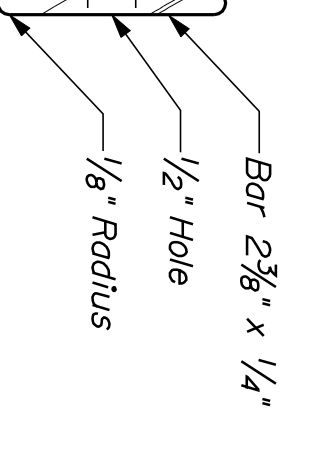
NEOPRENE SHEET Trough "B"



ABUTMENT NO. 2 CURTAIN ANCHOR DETAIL



TROUGH PLATE



ANCHOR BAR

STATE OF MAINE  
DEPARTMENT OF TRANSPORTATION  
**IM-A710(000)E**  
PIN  
**17100.00**  
BRIDGE NO. 1558 BRIDGE PLANS

SIGNATURE \_\_\_\_\_  
P.E. NUMBER \_\_\_\_\_  
DATE \_\_\_\_\_

PROJ. MANAGER	S. BUDGE	BY	DATE
DESIGN-DETAILED	R. BULGER	R. NIMON	05/2010
CHECKED-REVIEWED			
DESIGN2-DETAILED2			
DESIGN3-DETAILED3			
REVISIONS	RUN-CHANGED MATERIAL	6/21/2010	
REVISIONS 2			
REVISIONS 3			
REVISIONS 4			
FIELD CHANGES			

VETERANS REMEMBRANCE BRIDGE  
PENOBSCOT RIVER  
BANGOR-BREWER PENOBSCOT COUNTY  
**EXPANSION JOINT & CURTAIN TROUGH DETAILS**