



STATE OF MAINE
DEPARTMENT OF TRANSPORTATION
16 STATE HOUSE STATION
AUGUSTA, MAINE
04333-0016

JOHN ELIAS BALDACCI
GOVERNOR

DAVID A. COLE
COMMISSIONER

May 20, 2010
Subject: **Prentiss Twp.**
State Project No: 016742.00
Amendment No. 1

Dear Sir/Ms:

Make the following changes to the Bid Documents:

In the Bid Book (pages 4 thru 7), **REMOVE** the "SCHEDULE OF ITEMS", 4 pages dated 100507 and **REPLACE** with the attached new "SCHEDULE OF ITEMS", 4 pages dated 100517.

In the Plans, **REMOVE** the following Plan Sheets and **REPLACE** with the attached updated Plan Sheets (9 sheets total);

- SHEET NUMBER 2 OF 12
- SHEET NUMBER 3 OF 12
- SHEET NUMBER 4 OF 12
- SHEET NUMBER 6 OF 12
- SHEET NUMBER 7 OF 12
- SHEET NUMBER 8 OF 12
- SHEET NUMBER 9 OF 12
- SHEET NUMBER 10 OF 12
- SHEET NUMBER 12 OF 12

NOTE: If the Contractor proposes blasting for rock excavation, the Contractor will submit a project specific blasting plan to Maine DOT. This plan must demonstrate that blasting will not produce overpressure in surrounding waters that exceed 100 kPa. Maine DOT must then submit this plan to USFWS for approval at least 30 days before anticipated blasting activities, to allow for adequate review and approval by USFWS.

NOTE: Plan sheets will be FedExed/mailed to those who purchased plans in the quantity and size ordered.

Consider these changes prior to submitting your bid on June 2, 2010.

Sincerely,

For Scott Bickford
Contracts & Specifications Engineer



PRINTED ON RECYCLED PAPER

SCHEDULE OF ITEMS

CONTRACT ID: 016742.00

PROJECT(S): 016742.00

CONTRACTOR : _____

LINE NO	ITEM DESCRIPTION	APPROX. QUANTITY AND UNITS	UNIT PRICE		BID AMOUNT	
			DOLLARS	CTS	DOLLARS	CTS
SECTION 0001 PROJECT ITEMS						
0010	202.19 REMOVING EXISTING BRIDGE	LUMP	LUMP			
0020	203.20 COMMON EXCAVATION	456.000 CY				
0030	203.21 ROCK EXCAVATION	100.000 CY				
0040	203.25 GRANULAR BORROW	272.000 CY				
0050	203.35 CRUSHED STONE FILL	60.000 CY				
0060	304.10 AGGREGATE SUBBASE COURSE - GRAVEL	547.000 CY				
0070	403.208 HOT MIX ASPHALT 12.5 MM HMA SURFACE	110.000 T				
0080	403.213 HOT MIX ASPHALT 12.5 MM BASE	110.000 T				
0090	409.15 BITUMINOUS TACK COAT - APPLIED	25.000 G				
0100	508.13 MEMBRANE WATERPROOFING	LUMP	LUMP			

SCHEDULE OF ITEMS

REVISED:

CONTRACT ID: 016742.00

PROJECT(S): 016742.00

CONTRACTOR : _____

LINE NO	ITEM DESCRIPTION	APPROX. QUANTITY AND UNITS	UNIT PRICE		BID AMOUNT	
			DOLLARS	CTS	DOLLARS	CTS
0110	511.07 COFFERDAM: DOWNSTREAM	LUMP	LUMP			
0120	511.07 COFFERDAM: UPSTREAM	LUMP	LUMP			
0130	526.30 TEMPORARY CONCRETE BARRIER - TYPE 1	120.000 LF				
0140	534.7101 PRECAST CONCRETE BOX CULVERT - STATE SUPPLIED	LUMP	LUMP			
0150	606.23 GUARDRAIL TYPE 3C - SINGLE RAIL	388.000 LF				
0160	606.353 REFLECTORIZED FLEXIBLE GUARDRAIL MARKER	4.000 EA				
0170	606.78 LOW VOLUME GUARDRAIL ENDS - TYPE 3	4.000 EA				
0180	610.08 PLAIN RIPRAP	194.000 CY				
0190	618.1411 SEEDING METHOD NUMBER 3 - PLAN QUANTITY	5.000 UN				
0200	619.1401 EROSION CONTROL MIX	55.000 CY				
0210	620.54 STABILIZATION GEOTEXTILE	422.000 SY				

SCHEDULE OF ITEMS

REVISED:

CONTRACT ID: 016742.00

PROJECT(S): 016742.00

CONTRACTOR : _____

LINE NO	ITEM DESCRIPTION	APPROX. QUANTITY AND UNITS	UNIT PRICE		BID AMOUNT	
			DOLLARS	CTS	DOLLARS	CTS
0220	620.58 EROSION CONTROL GEOTEXTILE	193.000 SY				
0230	627.733 4" WHITE OR YELLOW PAINTED PAVEMENT MARKING LINE	200.000 LF				
0240	629.05 HAND LABOR, STRAIGHT TIME	10.000 HR				
0250	631.12 ALL PURPOSE EXCAVATOR (INCLUDING OPERATOR)	10.000 HR				
0260	631.15 ROLLER, EARTH AND BASE COURSE (INCLUDING OPERATOR)	10.000 HR				
0270	631.171 TRUCK - SMALL (INCLUDING OPERATOR)	10.000 HR				
0280	639.19 FIELD OFFICE TYPE B	1.000 EA				
0290	652.312 TYPE III BARRICADE	6.000 EA				
0300	652.33 DRUM	10.000 EA				
0310	652.34 CONE	20.000 EA				
0320	652.35 CONSTRUCTION SIGNS	332.000 SF				

SCHEDULE OF ITEMS

REVISED:

CONTRACT ID: 016742.00

PROJECT(S): 016742.00

CONTRACTOR : _____

LINE NO	ITEM DESCRIPTION	APPROX. QUANTITY AND UNITS	UNIT PRICE		BID AMOUNT	
			DOLLARS	CTS	DOLLARS	CTS
0330	652.36 MAINTENANCE OF TRAFFIC CONTROL DEVICES	75.000 CD				
0340	652.38 FLAGGER	20.000 HR				
0350	659.10 MOBILIZATION	LUMP	LUMP			
	SECTION 0001 TOTAL					
	TOTAL BID					

LITTLE MUD BROOK BRIDGE LITTLE MUD BROOK PRENTISS TWP PENOBSCOT COUNTY

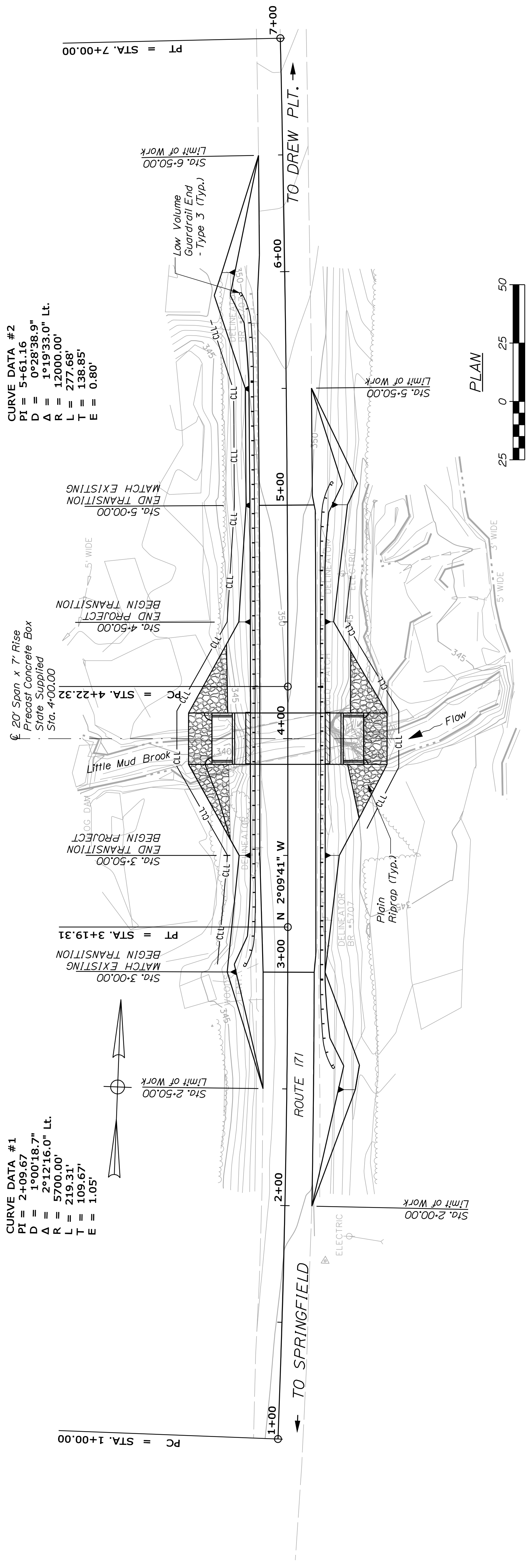
PLAN & PROFILE

PROJ. MANAGER S. Bodge

FIELD CHANGES	
REVISIONS 4	
REVISIONS 3	
REVISIONS 2	
REVISIONS 1	
DESIGNS-DETAILS	
CHECKED-REVIEWED	R. Eileno
DMS	
DATE	
BY	

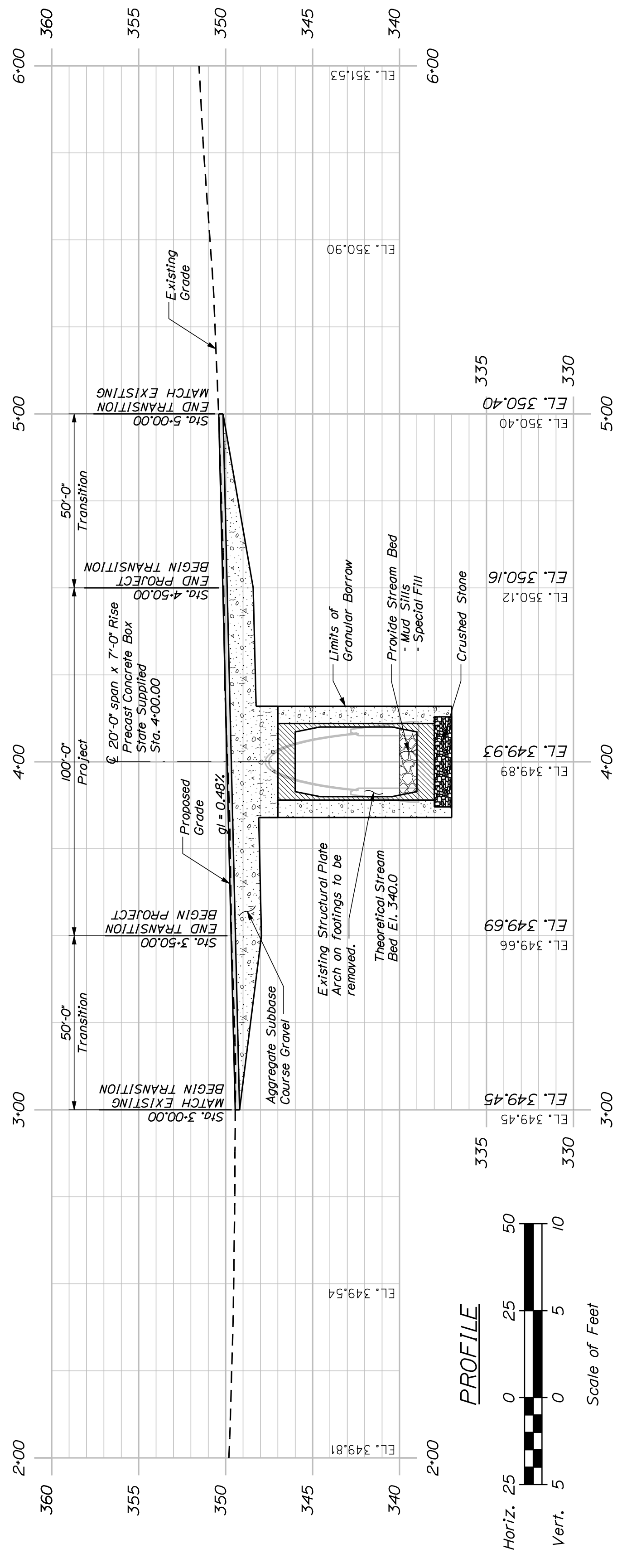
DATE	
P. E. NUMBER	
SIGNATURE	

BRIDGE NO. 5707	16742.00
PIN	16742.00
DEPARTMENT OF TRANSPORTATION	
STATE OF MAINE	



CURVE DATA #1
 PI = 2+09.67
 D = 1°00'18.7"
 Δ = 2°12'16.0" Lt.
 R = 5700.00'
 L = 219.31'
 T = 109.67'
 E = 1.05'

CURVE DATA #2
 PI = 5+61.16
 D = 0°28'38.9"
 Δ = 1°19'33.0" Lt.
 R = 12000.00'
 L = 277.68'
 T = 138.85'
 E = 0.80'



PROFILE

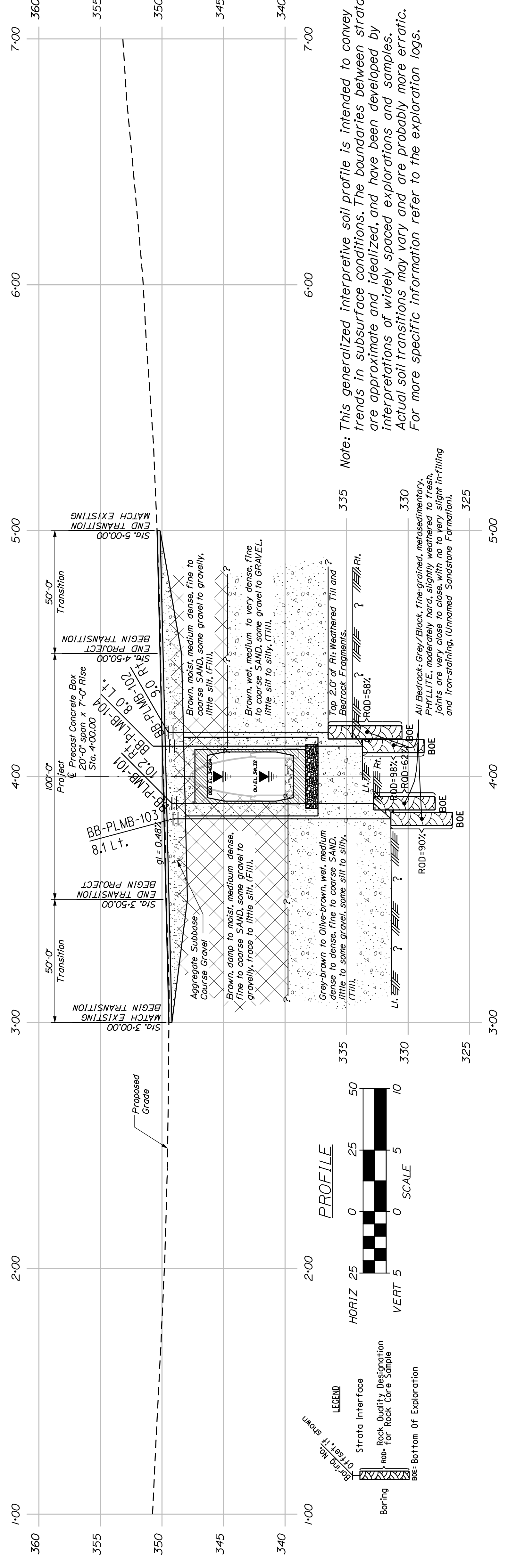
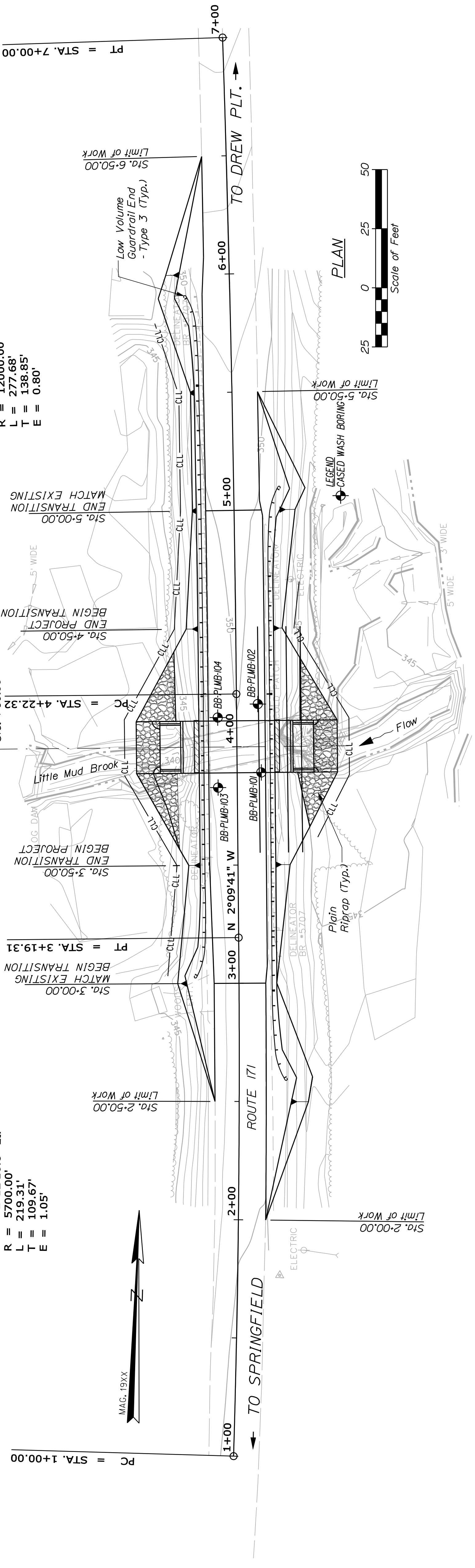
Horiz. 25 0 25 50
 Vert. 5 0 5 10
 Scale of Feet

PROJ. MANAGER	BY	DATE
MOREAU	T. WHITE	
CHECKED - REVISED		
DESIGN - DETAIL		
DESIGN - DETAIL		
DESIGNS - DETAIL		
REVISIONS 1		
REVISIONS 2		
REVISIONS 3		
REVISIONS 4		
FIELD CHANGES		

LITTLE MUD BROOK BRIDGE
LITTLE MUD BROOK
PRENTISS TWP PENOBSCOT COUNTY
BORING LOCATION PLAN &
INTERPRETIVE SUBSURFACE PROFILE

CURVE DATA #2
PI = 5+61.16
D = 0°28'38.9"
A = 1°19'33.0" Lt.
R = 12000.00'
L = 277.68'
T = 138.85'
E = 0.80'

CURVE DATA #1
PI = 2+09.67
D = 1°00'18.7"
A = 2°12'16.0" Lt.
R = 5700.00'
L = 219.31'
T = 109.67'
E = 1.05'



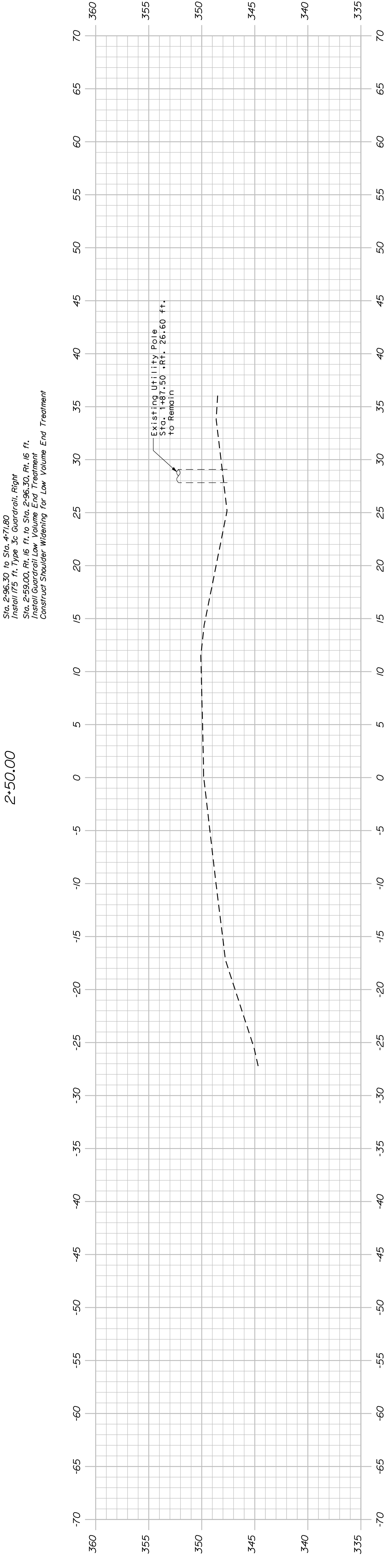
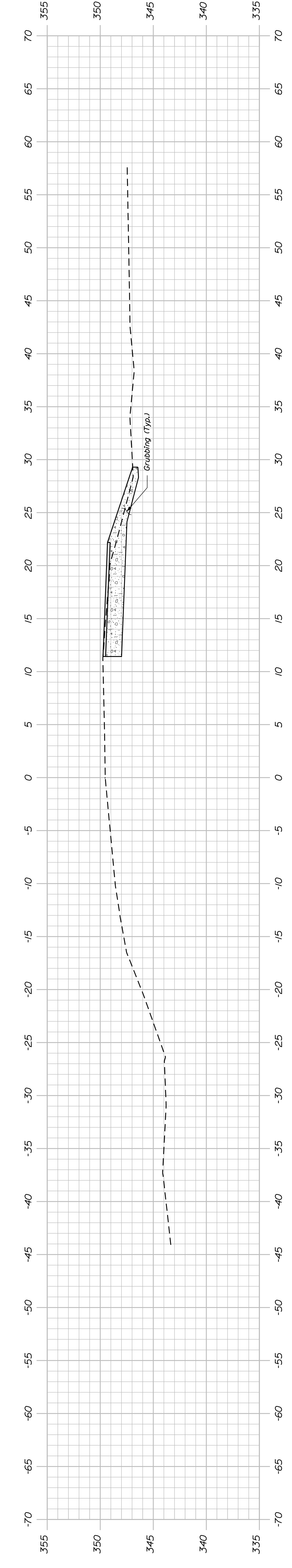
Note: This generalized interpretive soil profile is intended to convey trends in subsurface conditions. The boundaries between strata are approximate and idealized, and have been developed by interpretations of widely spaced explorations and samples. Actual soil transitions may vary and are probably more erratic. For more specific information refer to the exploration logs.

LITTLE MUD BROOK BRIDGE
LITTLE MUD BROOK
PRENTISS TWP PENOBSCOT COUNTY

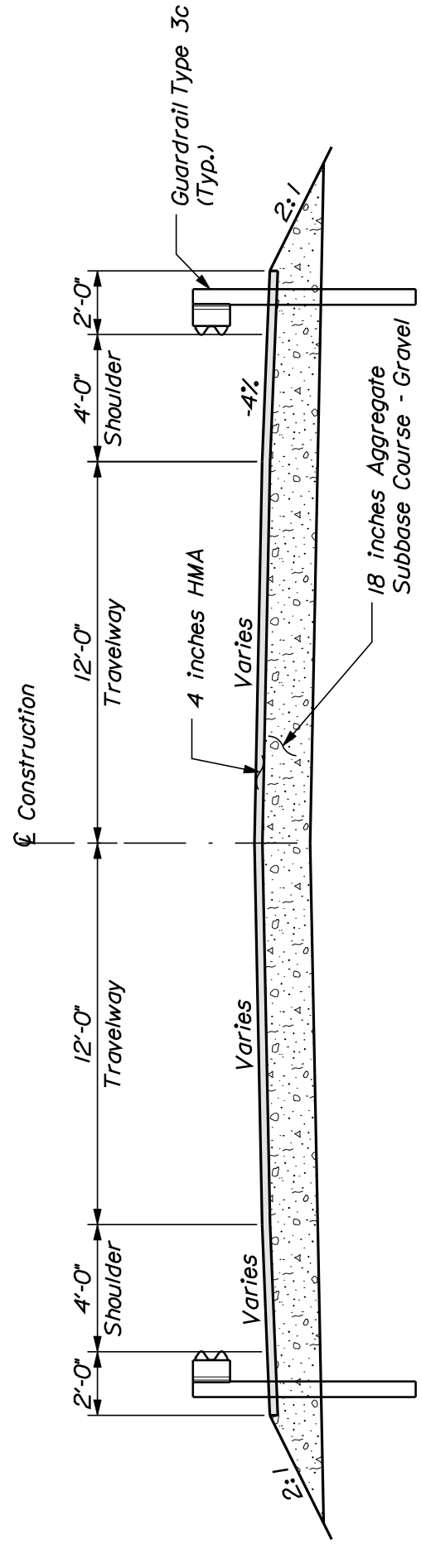
CROSS SECTIONS

PROJ. MANAGER	S. Bodge	DATE	
CHECKED-REVIEWED	R. Elleno	DMS	
DESIGN-DETAILED		MLB	
DESIGN-DETAILED			
REVISIONS 1			
REVISIONS 2			
REVISIONS 3			
REVISIONS 4			
FIELD CHANGES			

STATE OF MAINE DEPARTMENT OF TRANSPORTATION	BRIDGE NO. 5707 PIN 16742.00
	16742.00



STA. 2+00.00
LIMIT OF WORK, RT.

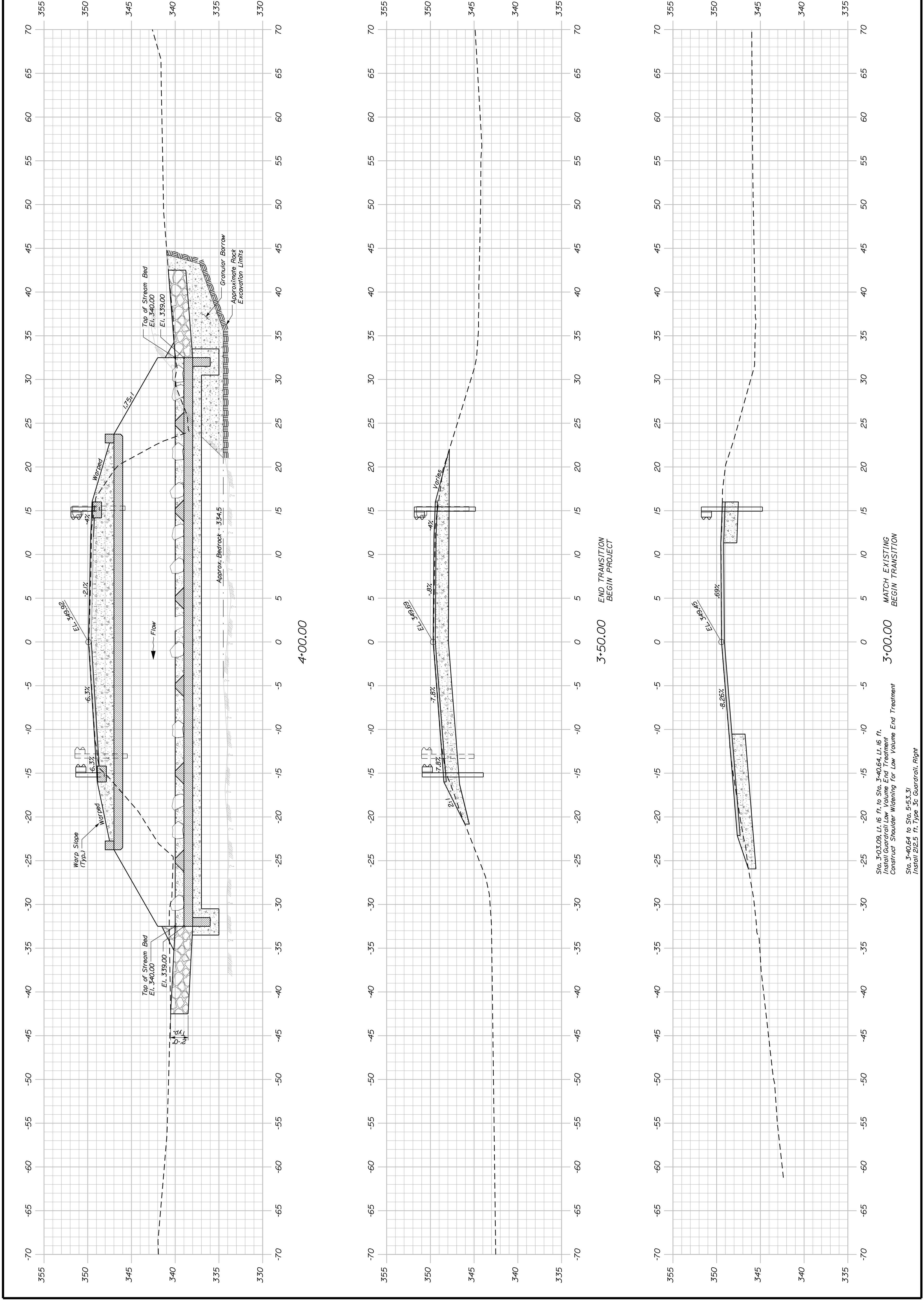


LITTLE MUD BROOK BRIDGE
 LITTLE MUD BROOK
 PRENTISS TWP PENOBSCOT COUNTY

CROSS SECTIONS

PROJ MANAGER	S. Bodge	DATE	
DESIGN-DETAILED	R. Elleno	DATE	
CHECKED-REVIEWED	M.B.	DATE	
DESIGN-DETAILED			
REVISIONS 1			
REVISIONS 2			
REVISIONS 3			
REVISIONS 4			
FIELD CHANGES			

STATE OF MAINE	DEPARTMENT OF TRANSPORTATION	BRIDGE NO. 5707	PIN 16742.00
		16742.00	
		BRIDGE PLANS	



3+00.00 MATCH EXISTING
 BEGIN TRANSITION

3+50.00 END TRANSITION
 BEGIN PROJECT

4+00.00

Sta. 3+03.09 Lt. 16 ft. to Sta. 3+40.64 Lt. 16 ft.
 Install Guardrail Low Volume End Treatment
 Construct Shoulder Widening for Low Volume End Treatment
 Sta. 3+40.64 to Sta. 5+53.31
 Install 212.5 ft. Type 3c Guardrail Right

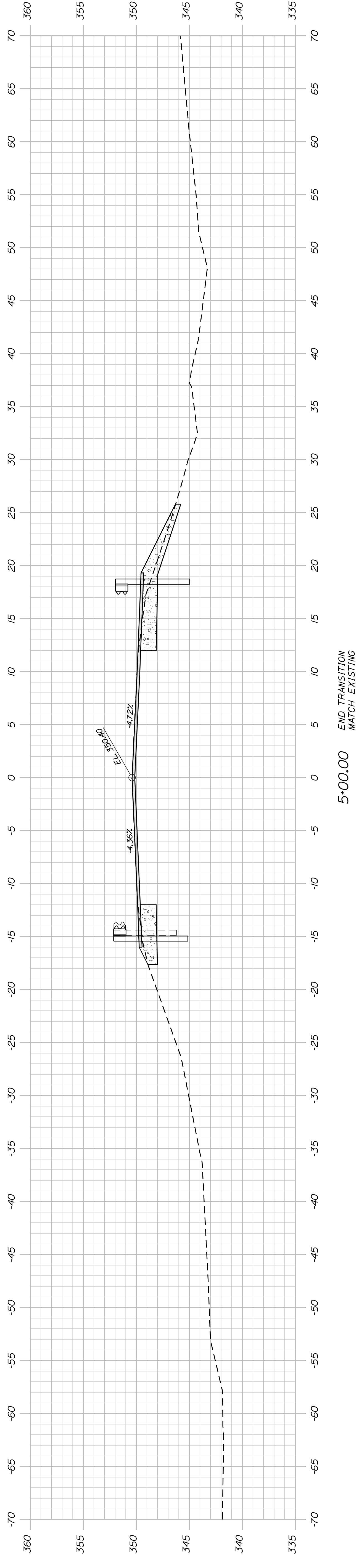
LITTLE MUD BROOK BRIDGE
LITTLE MUD BROOK
PRENTISS TWP PENOBSCOT COUNTY

CROSS SECTIONS

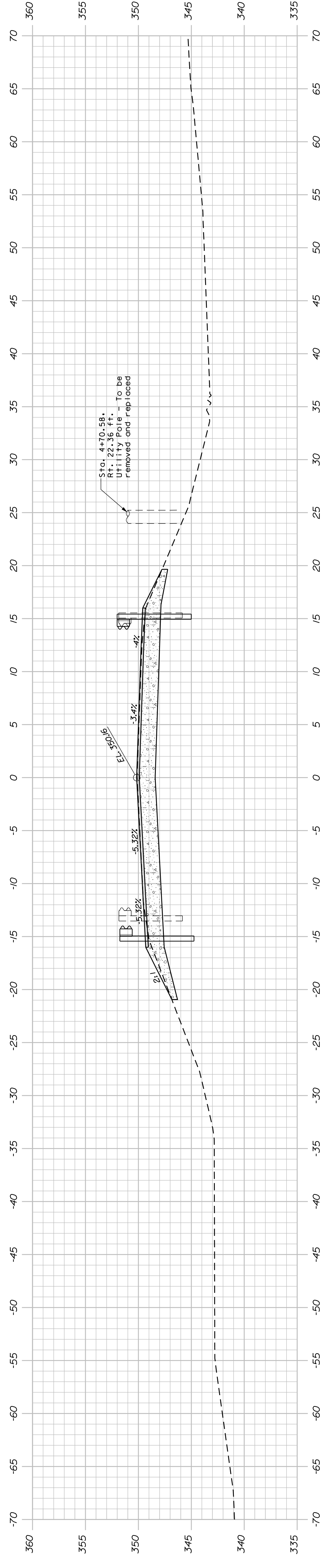
PROJ. MANAGER	S. Bodgø	BY	DATE
DESIGN-DETAILED	R. Elleno	DMS	
CHECKED-REVIEWED		MLB	
DESIGN-DETAILED			
DESIGN-DETAILED			
REVISIONS 1			
REVISIONS 2			
REVISIONS 3			
REVISIONS 4			
FIELD CHANGES			

SIGNATURE	DATE
P. B. NUMBER	

STATE OF MAINE DEPARTMENT OF TRANSPORTATION	BRIDGE NO. 5707 PIN 16742.00
	16742.00



5+00.00 END TRANSITION
MATCH EXISTING



4+50.00 END PROJECT
BEGIN TRANSITION

Sta. 4+71.79, Rt. 16 ft. to Sta. 5+09.24, Rt. 16 ft.
Install Guardrail/Low Volume End Treatment
Construct Shoulder Widening for Low Volume End Treatment

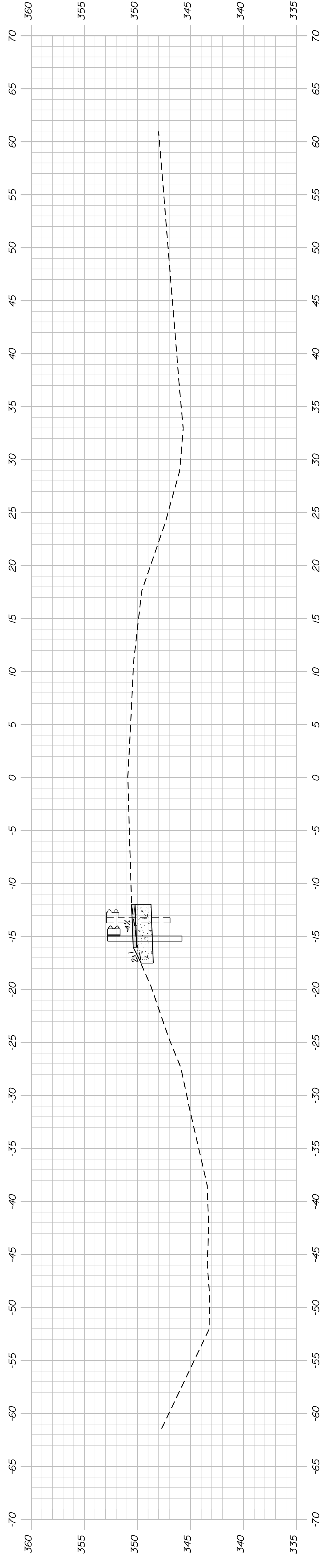
SHEET NUMBER

LITTLE MUD BROOK BRIDGE
 LITTLE MUD BROOK
 PRENTISS TWP
 PENOBSCOT COUNTY

CROSS SECTIONS

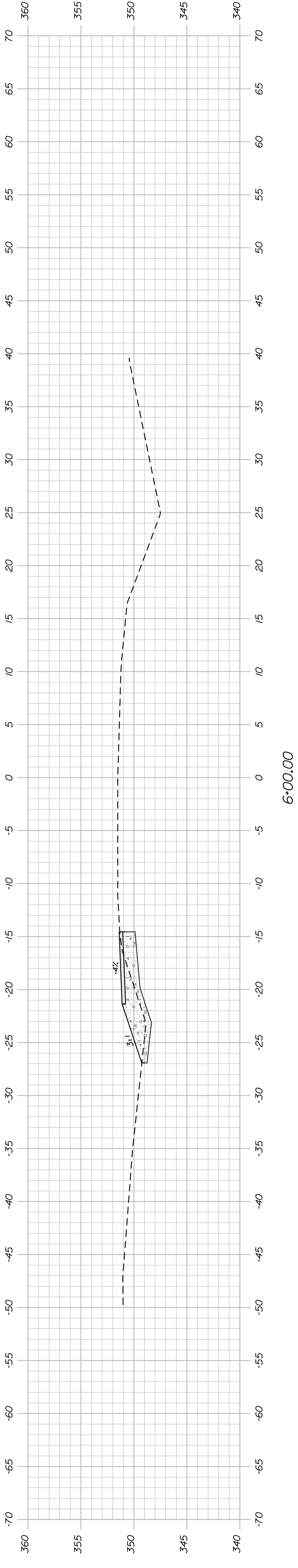
PROJ. MANAGER	S. Bodge	BY	DATE
DESIGN-DETAILER	R. Elleno	DMS	
CHECKED-REVIEWER		MLB	
DESIGN-DETAILER			
DESIGN-DETAILED			
REVISIONS 1			
REVISIONS 2			
REVISIONS 3			
REVISIONS 4			
FIELD CHANGES			

STATE OF MAINE DEPARTMENT OF TRANSPORTATION	16742.00
BRIDGE NO. 5707	PIN 16742.00
BRIDGE PLANS	

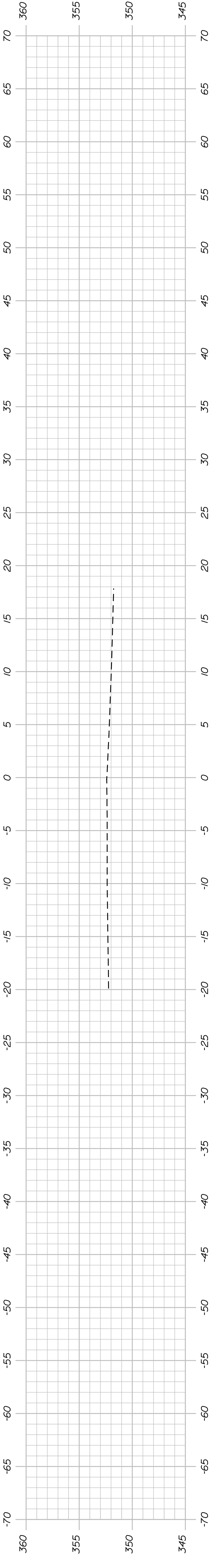


Sta. 5+53.31, Lt. 16 ft. to Sta. 5+90.86, Lt. 16 ft.
 Install Guardrail Low Volume End Treatment
 Construct Shoulder Widening For Low Volume End Treatment.

5+50.00



6+00.00

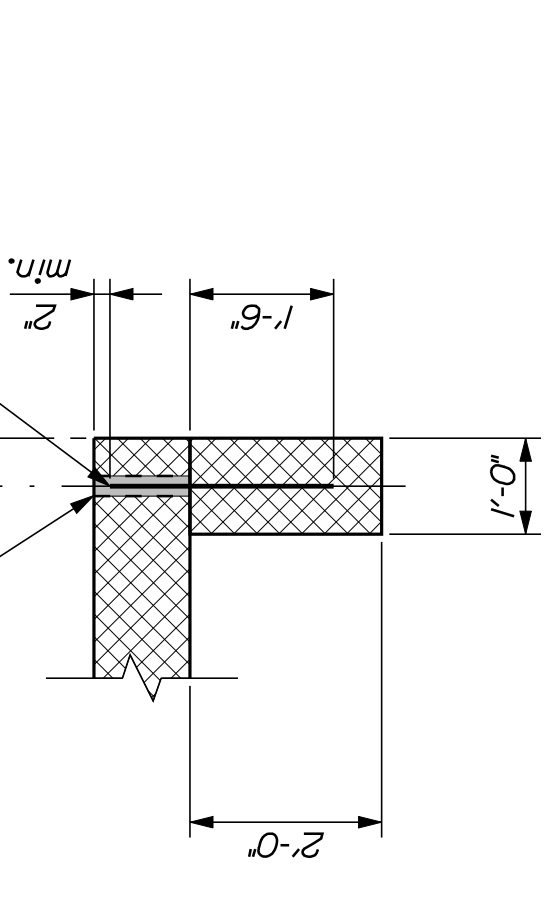


6+50.00

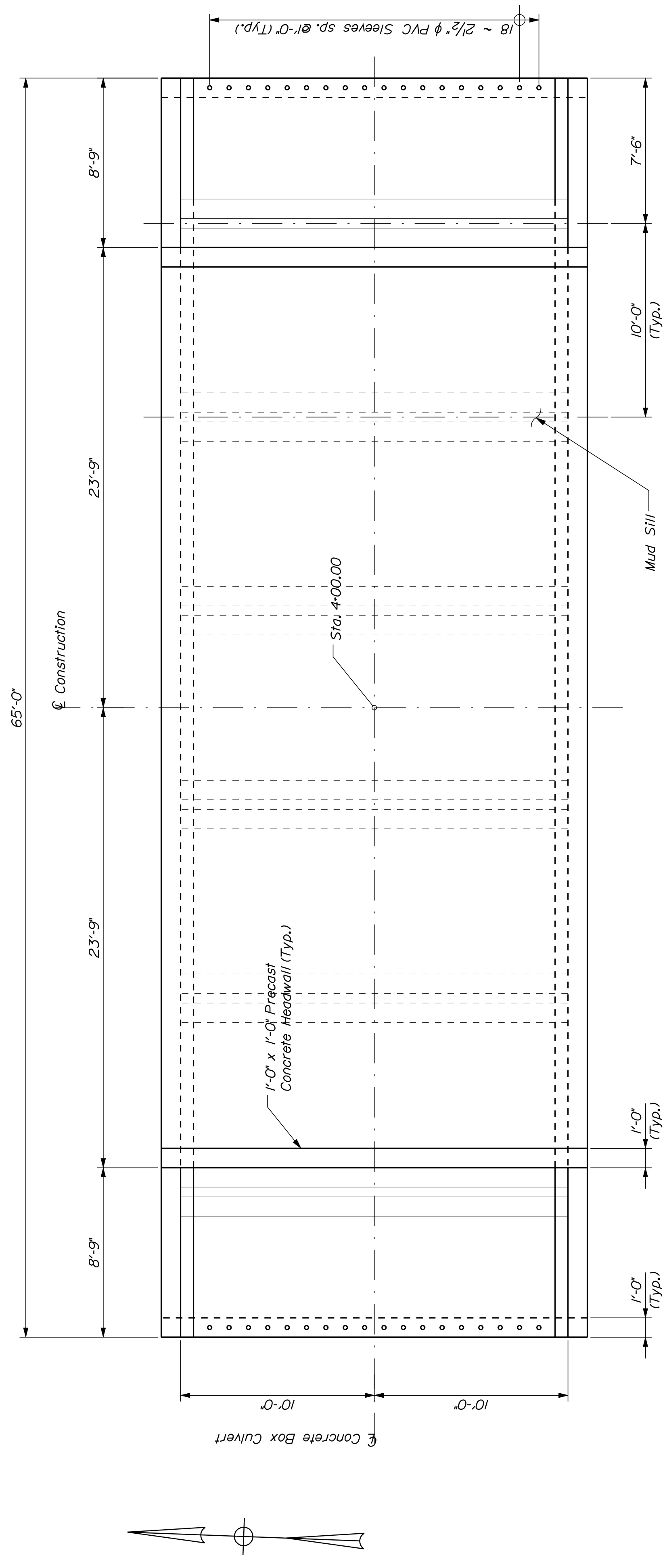
PRECAST CONCRETE BOXES NOTES:

- The precast units shall be designed to carry construction loadings with a minimum fill cover of 18 inches over the top of the units.
- The construction, handling, and assembly of the precast units shall be in accordance with Special Provisions Section 534, Precast Structural Concrete, and with the manufacturer's specifications as applicable.
- Install standard membrane waterproofing over the top and to 12 inches down the exterior sides of the precast units.

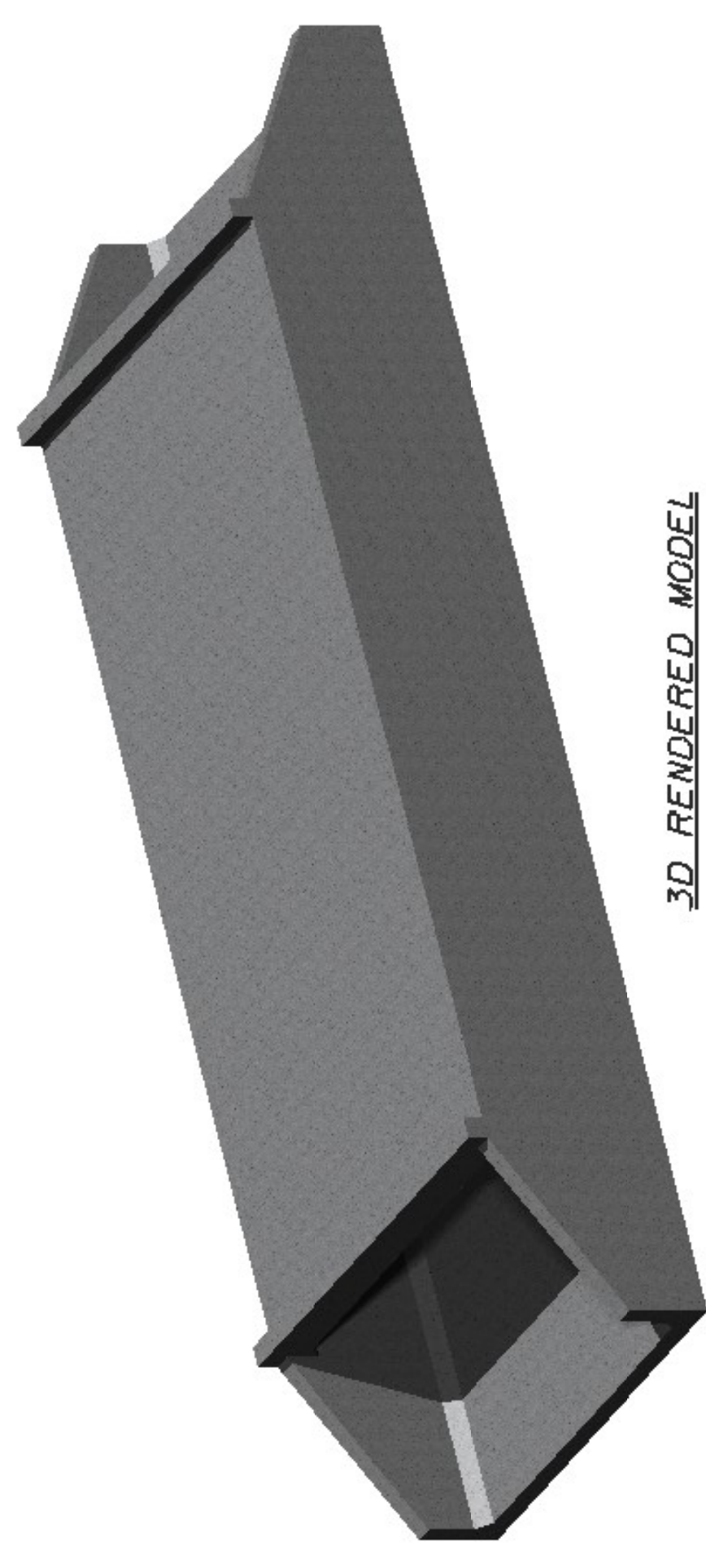
2 1/2" φ PVC Sleeve w/ Cementitious Anchoring from MaineDOT Qualified Products List



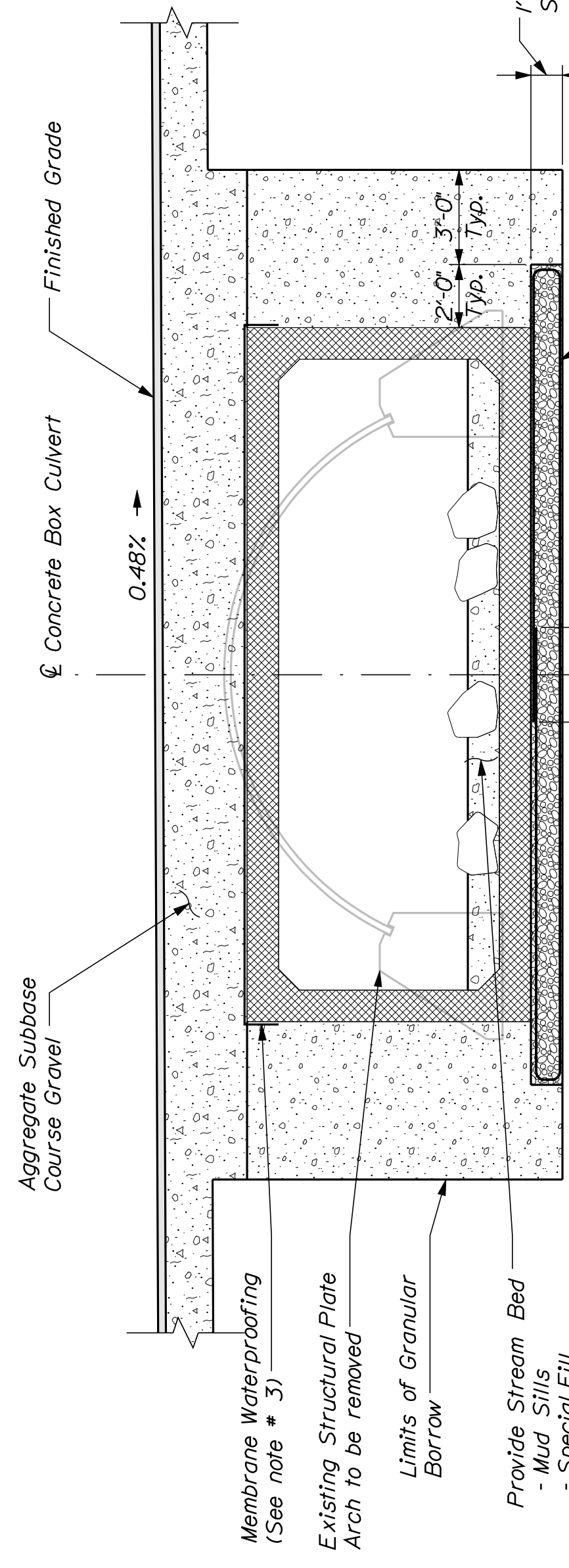
PRECAST CONCRETE TOE WALL DETAIL



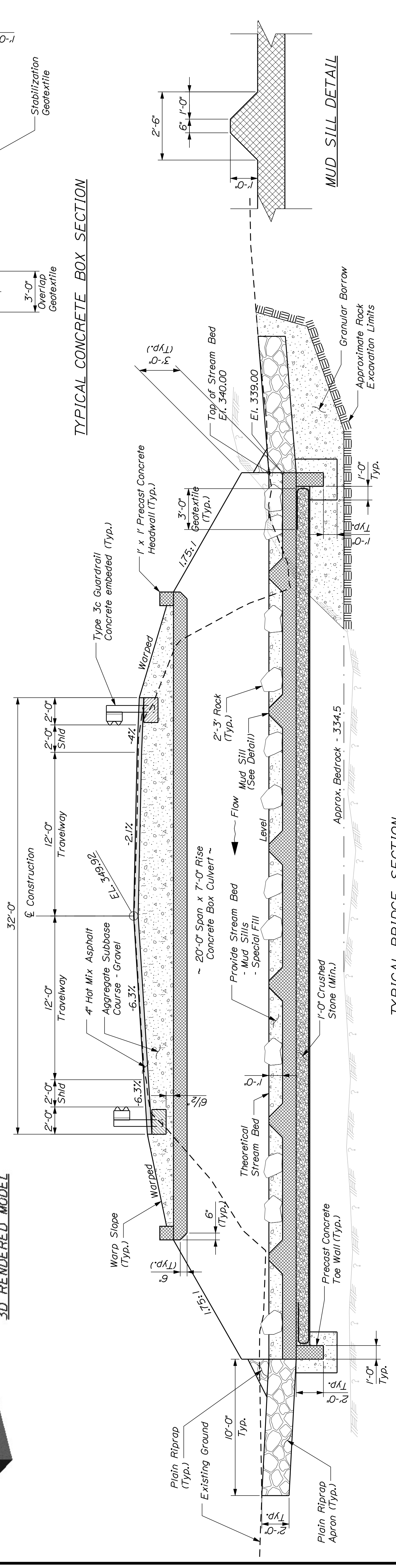
CONCRETE BOX PLAN



3D RENDERED MODEL



TYPICAL CONCRETE BOX SECTION



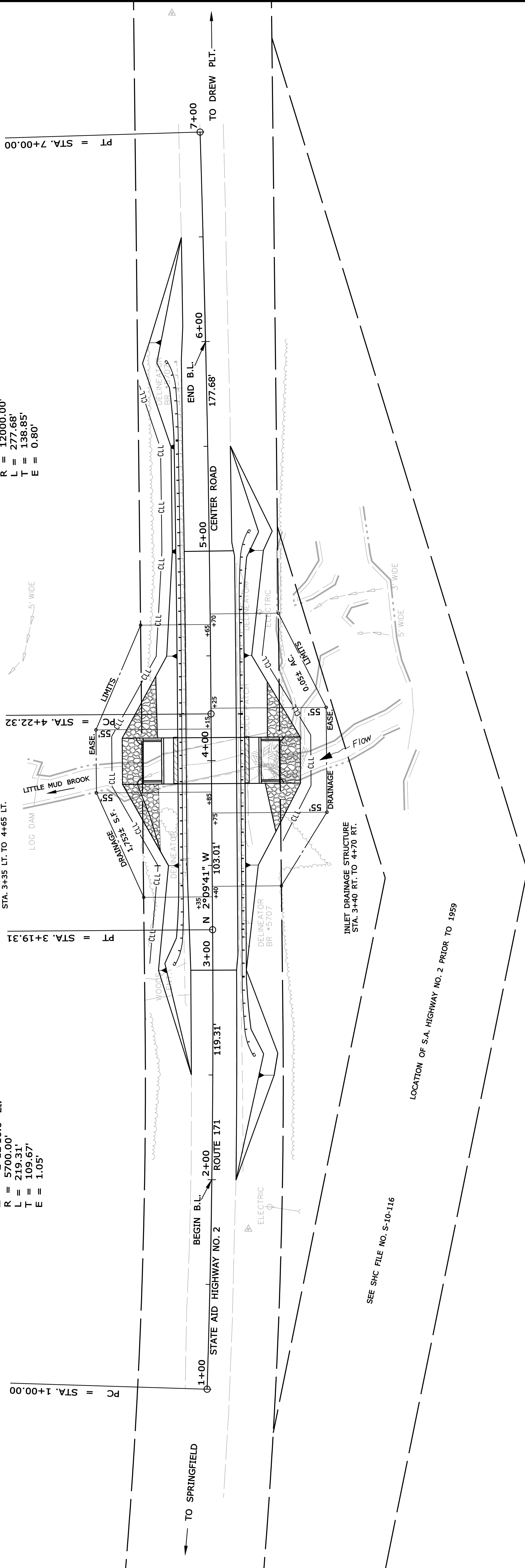
TYPICAL BRIDGE SECTION



JEANNINE M. SANDERS
 ITEM NO. (1)
 DRAINAGE EASEMENT = 1.753± S.F. (1)
 TOTAL AREA = 35.04± AC. (PER TAX OFFICE)

CURVE DATA #1
 PI = 2+09.67
 D = 1°00'18.7"
 A = 2°12'16.0" Lt.
 R = 5700.00'
 L = 219.31'
 T = 109.67'
 E = 1.05'

CURVE DATA #2
 PI = 5+61.16
 D = 0°28'38.9"
 A = 1°19'33.0" Lt.
 R = 12000.00'
 L = 277.68'
 T = 138.85'
 E = 0.80'



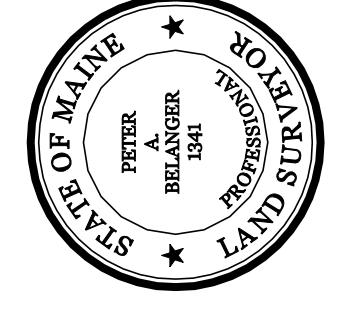
JEANNINE M. SANDERS
 ITEM NO. (2)
 DRAINAGE EASE. = 0.05± AC. (1)
 TOTAL AREA = 100± AC. (PER TAX OFFICE)

R/W REFERENCES
 PENOBSCOT COUNTY
 VOL. 6 PG. 458
 1858 (4 RODS)
 SHC FILE NO. S-10-116
 1957

NO.	DATE	DESCRIPTION

PLAN NO.	FILED IN	PLAN BOOK GRANTOR	PAGE	COUNTY	RECORD DATE	BOOK	PAGE

DAVID A. COLE
 COMMISSIONER
 KENNETH L. SWEENEY
 CHIEF ENGINEER
 DATE



BRIDGE NO. 5707
 LITTLE MUD BROOK BRIDGE
 OVER
 LITTLE MUD BROOK
 PIN 16742.00

STATE AID HIGHWAY NO. 2
 ROUTE 171 CENTER ROAD
 PRENTISS TOWNSHIP PENOBSCOT COUNTY
 STATE PROJECT NO. 16742.00
 MARCH 2010
 SCALE 1" = 25'
 RIGHT-OF-WAY MAP
 SHEET 1 OF 1
 D.O.T. FILE NO. 10-460

SHEET NUMBER
12
 OF 12

STATE OF MAINE
 DEPARTMENT OF TRANSPORTATION
 16 STATE HOUSE STATION - AUGUSTA, ME 04333-0016
 PRENTISS TOWNSHIP
 RIGHT OF WAY MAP

ITEM	TECH	CHECKED
BASE MAP	PNS	
EXIST. R/W		
PROP. LINES		
AREAS		

SYMBOLS

● or ○ (WELL)	● or ○ (IRON PIPE OR PIN FOUND)
— (GRAVING LIMIT LINE)	— (CONSTRUCTION LIMIT LINE)
— (PROPERTY LINE PL)	— (SEPTIC TANK)
— (CONSTRUCTION LIMIT LINE)	— (ROW NUMBER)
— (NEW ROW WITHIN EXIST. ROW)	— (TRAVERSE POINT)
— (CONTROL OF ACCESS)	— (WATER LINE)
— (NEW ROW WITHIN EXIST. ROW)	— (GAS LINE)
— (EXISTING RIGHT OF WAY)	— (ELECTRIC LINE)
— (LIMITS OF WROUGHT PORTION (L.O.W.P.))	— (TELEPHONE LINE)
— (NEW ROW WITHIN EXIST. ROW)	— (SEWER LINE)