



STATE OF MAINE  
DEPARTMENT OF TRANSPORTATION  
16 STATE HOUSE STATION  
AUGUSTA, MAINE  
04333-0016

JOHN ELIAS BALDACCI  
GOVERNOR

DAVID A. COLE  
COMMISSIONER

January 11, 2010  
Subject: **Trenton Highway, Acadia  
Welcome Center**  
Federal Project No. 16123.60  
State Pin No.016123.60  
**Amendment No. 2**

Dear Sir/Ms:

Make the following changes to the bid documents:

In the Bid Book (pages 4 through 9) **REMOVE** the "SCHEDULE OF ITEMS", 6 pages dated 091210 and **REPLACE** with the attached new "SCHEDULE OF ITEMS", 6 pages dated 100108.

In the Plans, Sheet Number 4 of 54, "ESTIMATED QUANTITIES", make the following **CHANGES** in pen and ink:

ITEM 652.36 – Maintenance of Traffic Control Devices – **CHANGE** the "QUANTITY" from "108" to read "**400**".

ITEM 652.38 – Flagger – **CHANGE** the "QUANTITY" from "7000" to read "**10000**".

In the Plans, **REMOVE** the following Plan Sheets and **REPLACE** with the attached new Plan Sheets.

1. **REMOVE SHEET NUMBER 7 OF 54** and **REPLACE** with SHEET NUMBER 7A OF 54.
2. **REMOVE SHEET NUMBER 8 OF 54** and **REPLACE** with SHEET NUMBER 8A OF 54.
3. **REMOVE SHEET NUMBER 9 OF 54** and **REPLACE** with SHEET NUMBER 9A OF 54.
4. **REMOVE SHEET NUMBER 10 OF 54** and **REPLACE** with SHEET NUMBER 10A OF 54.
5. **REMOVE SHEET NUMBER 11 OF 54** and **REPLACE** with SHEET NUMBER 11A OF 54.



PRINTED ON RECYCLED PAPER

Consider these changes and information prior to submitting your bid on **January 13, 2010**.

Sincerely,

A handwritten signature in dark ink, appearing to read "Scott Bickford". The signature is fluid and cursive, with the first name "Scott" being more prominent and the last name "Bickford" following in a similar style.

Scott Bickford  
Contracts & Specifications Engineer

SCHEDULE OF ITEMS

REVISED:

CONTRACT ID: 016123.60

PROJECT(S): 016123.60

CONTRACTOR : \_\_\_\_\_

LINE NO	ITEM DESCRIPTION	APPROX. QUANTITY AND UNITS	UNIT PRICE		BID AMOUNT	
			DOLLARS	CTS	DOLLARS	CTS
SECTION 0001 RURAL HIGHWAY CONSTRUCTION						
0010	201.11 CLEARING	1.000 AC				
0020	201.23 REMOVING SINGLE TREE TOP ONLY	8.000 EA				
0030	201.24 REMOVING STUMP	6.000 EA				
0040	202.11 REMOVING PORTLAND CEMENT CONCRETE PAVEMENT	7480.000 SY				
0050	202.202 REMOVING PAVEMENT SURFACE	14040.000 SY				
0060	203.20 COMMON EXCAVATION	12200.000 CY				
0070	206.061 STRUCTURAL EARTH EXCAVATION - DRAINAGE AND MINOR STRUCTURES, BELOW GRADE	50.000 CY				
0080	304.09 AGGREGATE BASE COURSE - CRUSHED	12660.000 CY				
0090	403.1021 TEXTURED ASPHALT PAVEMENT	320.000 SY				
0100	403.207 HOT MIX ASPHALT 19.0 MM HMA	2620.000 T				

SCHEDULE OF ITEMS

REVISED:

CONTRACT ID: 016123.60

PROJECT(S): 016123.60

CONTRACTOR : \_\_\_\_\_

LINE NO	ITEM DESCRIPTION	APPROX. QUANTITY AND UNITS	UNIT PRICE		BID AMOUNT	
			DOLLARS	CTS	DOLLARS	CTS
0110	403.208 HOT MIX ASPHALT 12.5 MM HMA SURFACE	1680.000 T				
0120	403.209 HOT MIX ASPHALT 9.5 MM (SIDEWALKS, DRIVES, INCIDENTALS)	170.000 T				
0130	403.213 HOT MIX ASPHALT 12.5 MM BASE	3430.000 T				
0140	409.15 BITUMINOUS TACK COAT - APPLIED	1310.000 G				
0150	411.09 UNTREATED AGGREGATE SURFACE COURSE	10.000 CY				
0160	534.71 PRECAST CONCRETE BOX CULVERT	LUMP	LUMP			
0170	603.16 15 INCH CULVERT PIPE OPTION I	410.000 LF				
0180	603.17 18 INCH CULVERT PIPE OPTION I	60.000 LF				
0190	603.179 18 INCH CULVERT PIPE OPTION III	190.000 LF				
0200	603.199 24 INCH CULVERT PIPE OPTION III	210.000 LF				
0210	605.09 6 INCH UNDERDRAIN TYPE B	110.000 LF				

SCHEDULE OF ITEMS

REVISED:

CONTRACT ID: 016123.60

PROJECT(S): 016123.60

CONTRACTOR : \_\_\_\_\_

LINE NO	ITEM DESCRIPTION	APPROX. QUANTITY AND UNITS	UNIT PRICE		BID AMOUNT	
			DOLLARS	CTS	DOLLARS	CTS
0220	605.10 6 INCH UNDERDRAIN OUTLET	50.000 LF				
0230	606.23 GUARDRAIL TYPE 3C - SINGLE RAIL	613.000 LF				
0240	606.231 GUARDRAIL TYPE 3C - 15 FOOT RADIUS AND LESS	25.000 LF				
0250	606.265 TERMINAL END - SINGLE RAIL - GALVANIZED STEEL	1.000 EA				
0260	606.353 REFLECTORIZED FLEXIBLE GUARDRAIL MARKER	7.000 EA				
0270	606.356 UNDERDRAIN DELINEATOR POST	5.000 EA				
0280	606.47 SINGLE WOOD POST	10.000 EA				
0290	606.51 MULTIPLE MAILBOX SUPPORT	3.000 EA				
0300	606.79 GUARDRAIL 350 FLARED TERMINAL	3.000 EA				
0310	609.31 CURB TYPE 3	180.000 LF				
0320	609.34 CURB TYPE 5	2220.000 LF				

SCHEDULE OF ITEMS

REVISED:

CONTRACT ID: 016123.60

PROJECT(S): 016123.60

CONTRACTOR : \_\_\_\_\_

LINE NO	ITEM DESCRIPTION	APPROX. QUANTITY AND UNITS	UNIT PRICE		BID AMOUNT	
			DOLLARS	CTS	DOLLARS	CTS
0330	609.35 CURB TYPE 5 - CIRCULAR	140.000 LF				
0340	610.08 PLAIN RIPRAP	310.000 CY				
0350	613.319 EROSION CONTROL BLANKET	1760.000 SY				
0360	615.07 LOAM	820.000 CY				
0370	618.1301 SEEDING METHOD NUMBER 1 - PLAN QUANTITY	28.000 UN				
0380	618.1401 SEEDING METHOD NUMBER 2 - PLAN QUANTITY	55.000 UN				
0390	618.1411 SEEDING METHOD NUMBER 3 - PLAN QUANTITY	22.000 UN				
0400	619.12 MULCH	105.000 UN				
0410	620.58 EROSION CONTROL GEOTEXTILE	500.000 SY				
0420	626.11 PRECAST CONCRETE JUNCTION BOX	4.000 EA				
0430	626.22 NON-METALLIC CONDUIT	200.000 LF				

SCHEDULE OF ITEMS

REVISED:

CONTRACT ID: 016123.60

PROJECT(S): 016123.60

CONTRACTOR : \_\_\_\_\_

LINE NO	ITEM DESCRIPTION	APPROX. QUANTITY AND UNITS	UNIT PRICE		BID AMOUNT	
			DOLLARS	CTS	DOLLARS	CTS
0440	626.33 30 INCH FOUNDATION	4.000 EA				
0450	626.35 CONTROLLER CABINET FOUNDATION	1.000 EA				
0460	627.711 WHITE OR YELLOW PAINTED PAVEMENT MARKING LINE (PLAN QUANTITY)	13180.000 LF				
0470	627.75 WHITE OR YELLOW PAVEMENT & CURB MARKING	550.000 SF				
0480	627.76 TEMPORARY PVMT. MARK LINE, W OR YELLOW	LUMP	LUMP			
0490	629.05 HAND LABOR, STRAIGHT TIME	30.000 HR				
0500	631.12 ALL PURPOSE EXCAVATOR (INCLUDING OPERATOR)	20.000 HR				
0510	631.172 TRUCK - LARGE (INCLUDING OPERATOR)	40.000 HR				
0520	631.18 CHAIN SAW RENTAL (INCLUDING OPERATOR)	10.000 HR				
0530	631.20 STUMP CHIPPER (INCLUDING OPERATOR)	10.000 HR				
0540	639.18 FIELD OFFICE TYPE A	1.000 EA				

SCHEDULE OF ITEMS

REVISED:

CONTRACT ID: 016123.60

PROJECT(S): 016123.60

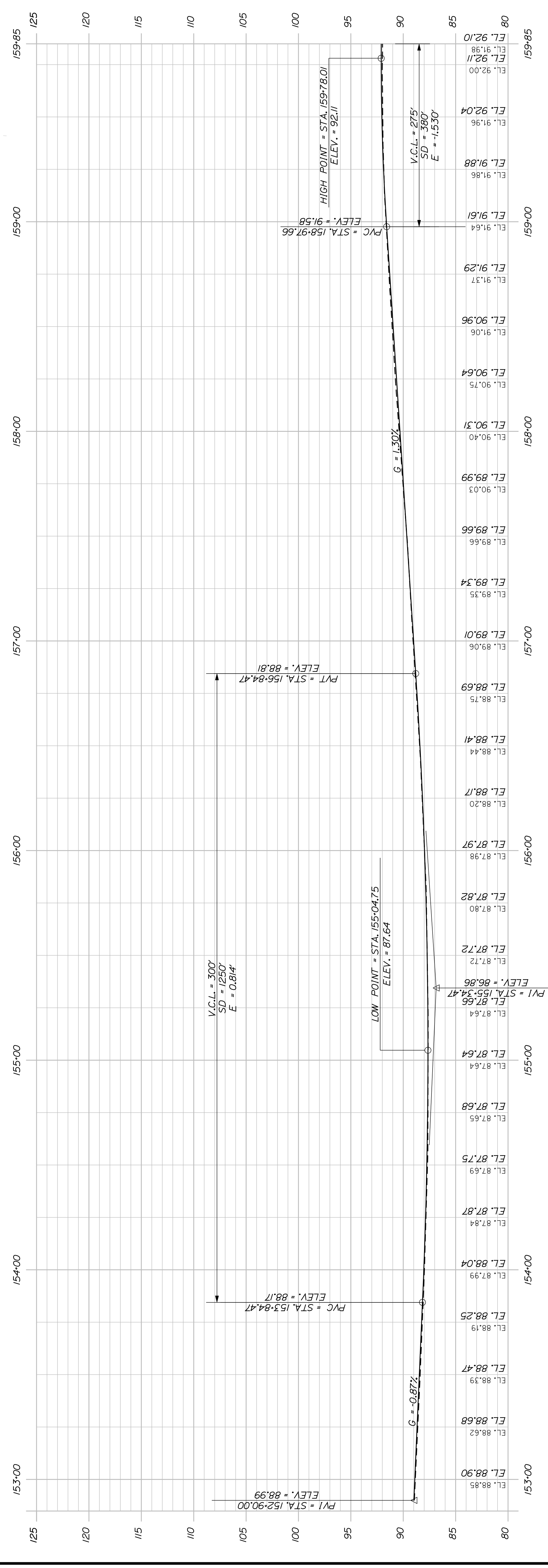
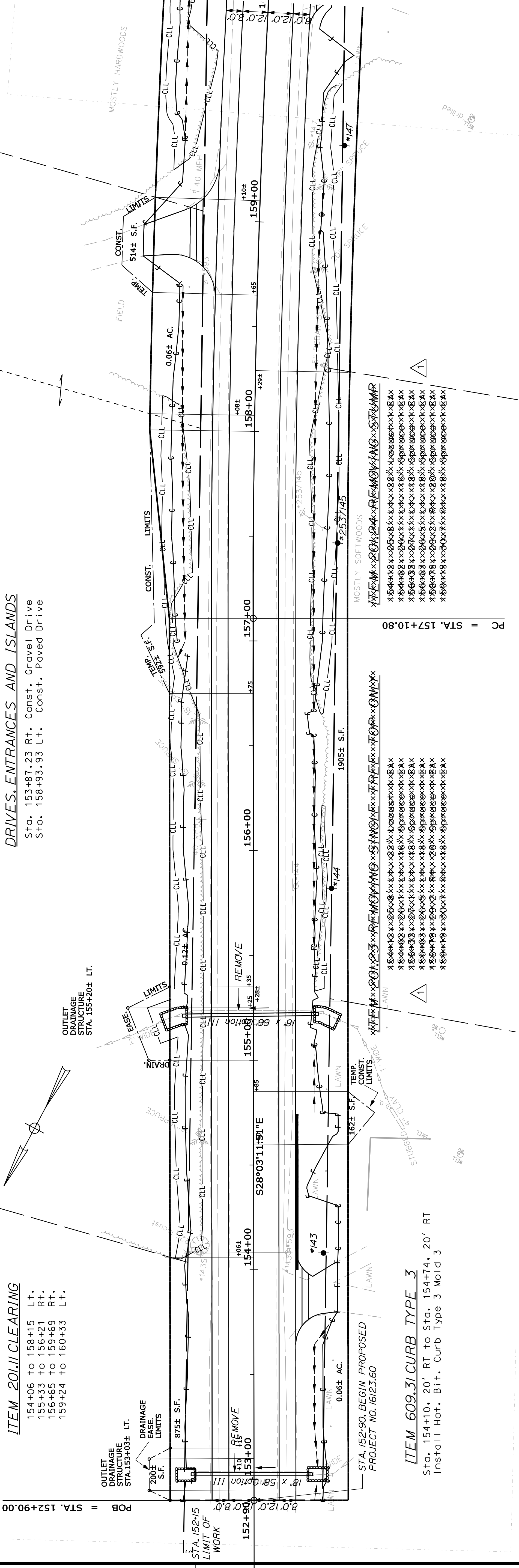
CONTRACTOR : \_\_\_\_\_

LINE NO	ITEM DESCRIPTION	APPROX. QUANTITY AND UNITS	UNIT PRICE		BID AMOUNT	
			DOLLARS	CTS	DOLLARS	CTS
0550	652.33 DRUM	20.000 EA				
0560	652.34 CONE	125.000 EA				
0570	652.35 CONSTRUCTION SIGNS	490.000 SF				
0580	652.36 MAINTENANCE OF TRAFFIC CONTROL DEVICES	400.000 CD				
0590	652.38 FLAGGER	10000.000 HR				
0600	656.75 TEMPORARY SOIL EROSION AND WATER POLLUTION CONTROL	LUMP	LUMP			
0610	658.20 ACRYLIC LATEX COLOR FINISH, GREEN	990.000 SY				
0620	659.10 MOBILIZATION	LUMP	LUMP			
0630	660.21 ON-THE-JOB TRAINING (BID)	1000.000 HR				
	SECTION 0001 TOTAL					
	TOTAL BID					



**ITEM 201.11 CLEARING**  
 154+06 to 158+15 Lt.  
 155+33 to 156+21 Rt.  
 156+65 to 159+69 Rt.  
 159+24 to 160+33 Lt.

**DRIVES, ENTRANCES AND ISLANDS**  
 Sta. 153+87.23 Rt. Const. Gravel Drive  
 Sta. 158+93.93 Lt. Const. Paved Drive



PROFILE

STATE OF MAINE  
 DEPARTMENT OF TRANSPORTATION  
 PIN 16123.60  
 HIGHWAY PLANS

DATE	BY	PROJECT NUMBER	SIGNATURE
-----	J. VELLEUX	J. VELLEUX	J. VELLEUX
-----	J. VELLEUX	J. VELLEUX	J. VELLEUX
-----	J. COFFIN	J. VELLEUX	J. VELLEUX
-----	J. KITTRIDGE	J. VELLEUX	J. VELLEUX
-----	J. KITTRIDGE	J. VELLEUX	J. VELLEUX
-----	J. VELLEUX	J. VELLEUX	J. VELLEUX
-----	J. VELLEUX	J. VELLEUX	J. VELLEUX
-----	J. VELLEUX	J. VELLEUX	J. VELLEUX
-----	J. VELLEUX	J. VELLEUX	J. VELLEUX
-----	J. VELLEUX	J. VELLEUX	J. VELLEUX
-----	J. VELLEUX	J. VELLEUX	J. VELLEUX

PLANS  
 TRENTON  
 ROUTE 3

SHEET NUMBER  
 7A  
 OF 54

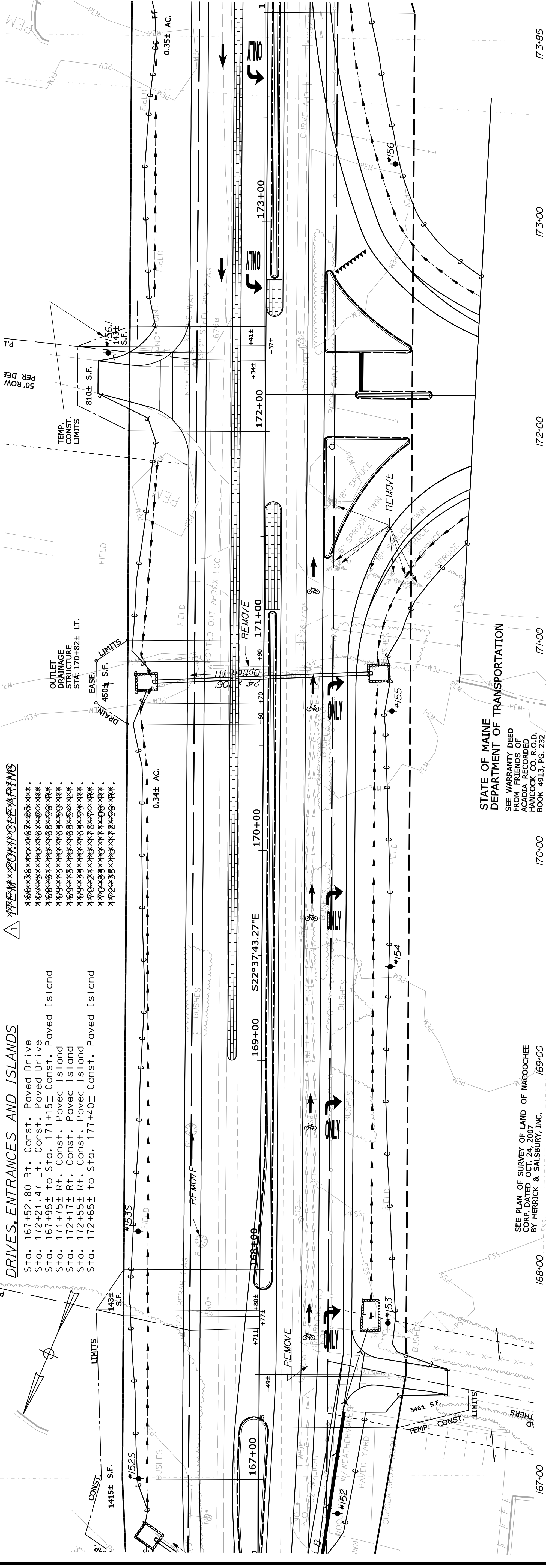
STA. 152+84.91 TO STA. 159+84.91





**DRIVES, ENTRANCES AND ISLANDS**  
 Sta. 167+52.80 Rt. Const. Paved Drive  
 Sta. 172+21.47 Lt. Const. Paved Drive  
 Sta. 167+95± to Sta. 171+15± Const. Paved Island  
 Sta. 171+75± Rt. Const. Paved Island  
 Sta. 172+17± Rt. Const. Paved Island  
 Sta. 172+55± Rt. Const. Paved Island  
 Sta. 172+65± to Sta. 177+40± Const. Paved Island

**ITEM 201.23 CLEARINGS**  
 x166x36x100x100x100x100x100x100  
 x166x36x100x100x100x100x100x100  
 x166x36x100x100x100x100x100x100  
 x166x36x100x100x100x100x100x100  
 x166x36x100x100x100x100x100x100  
 x166x36x100x100x100x100x100x100  
 x166x36x100x100x100x100x100x100  
 x166x36x100x100x100x100x100x100  
 x166x36x100x100x100x100x100x100  
 x166x36x100x100x100x100x100x100

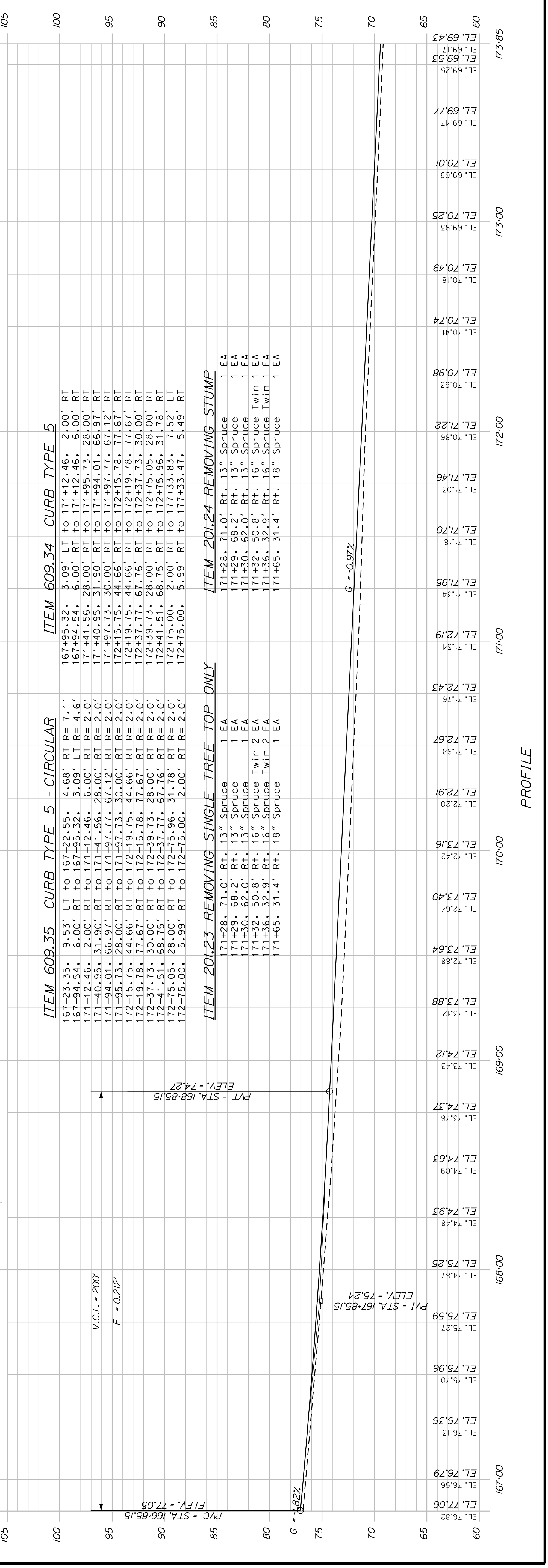


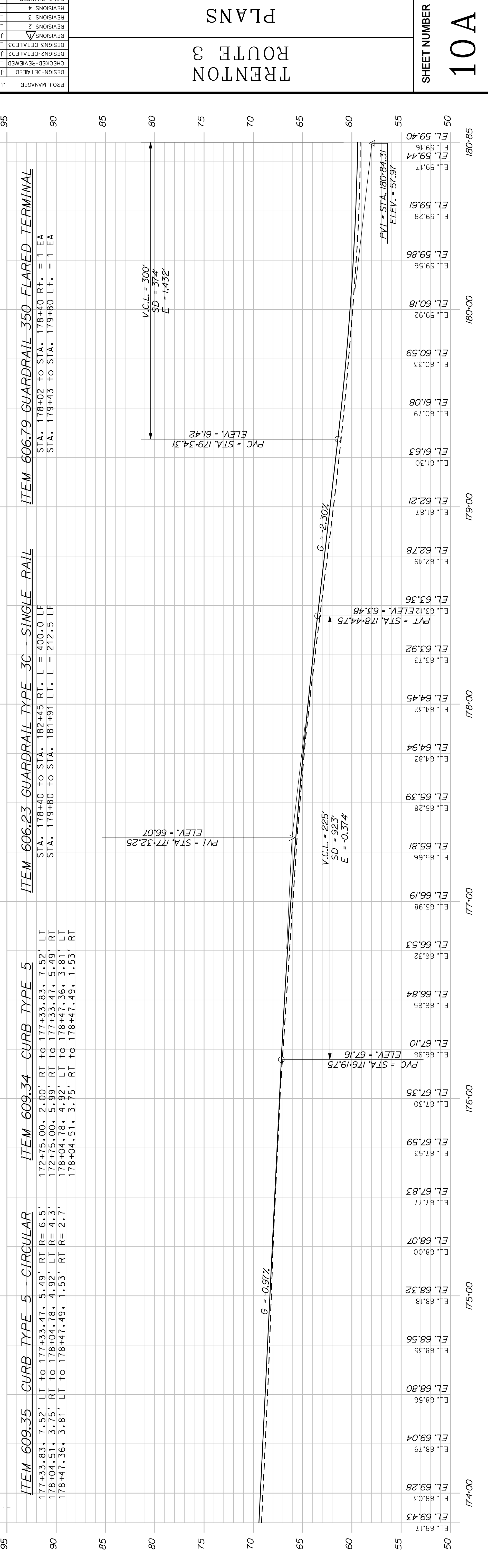
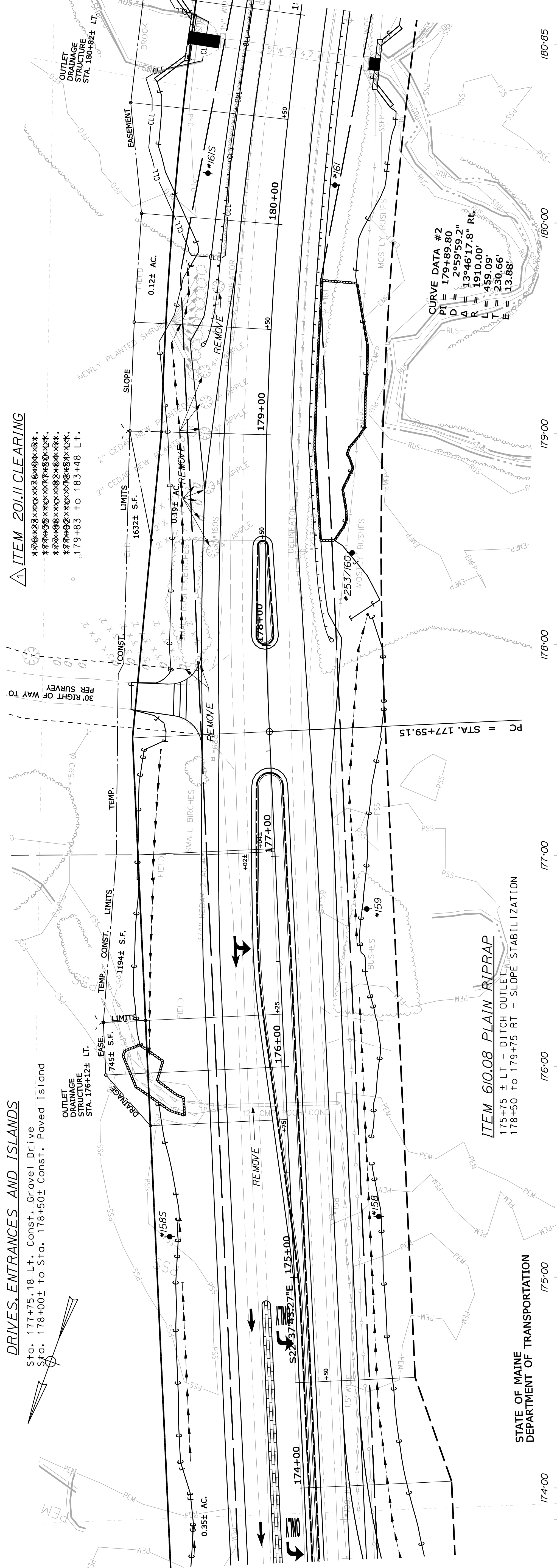
STATE OF MAINE  
 DEPARTMENT OF TRANSPORTATION  
 SEE WARRANTY DEED  
 AND FRIENDS OF  
 ACADIA INCORPORATED  
 HANCOCK COUNTY  
 BOOK 4913, PG. 232

SEE PLAN OF SURVEY OF LAND OF WACOOCHIE  
 CORP. DATED OCT. 24, 2007  
 BY HERRICK & SALSBUARY, INC. 1659-00

TRENTON  
 ROUTE 3  
 PLANS

DATE	BY	PROJ. MANAGER	DESIGN-DETAILED	CHECKED-REVIEWED	DESIGNS-DETAILED	REVISIONS 2	REVISIONS 3	REVISIONS 4	FIELD CHANGES
	J. VELLEUX	J. KITTRIDGE	J. VELLEUX	J. VELLEUX	J. VELLEUX				
	J. VELLEUX	J. COFFIN	J. VELLEUX	J. VELLEUX	J. VELLEUX				
	J. VELLEUX	J. KITTRIDGE	J. VELLEUX	J. VELLEUX	J. VELLEUX				





PROJ. MANAGER	J. KITTRIDGE	BY	DATE
CHECKED-REVIEWED	J. VELLEUX		
DESIGN-DETAILED	J. VELLEUX		
DESIGN-DETAILED	J. VELLEUX		
REVISIONS 1			
REVISIONS 2			
REVISIONS 3			
REVISIONS 4			
FIELD CHANGES			

SIGNATURE	DATE
P. E. NUMBER	



DATE	BY	DATE	BY
P.E. NUMBER	SIGNATURE	P.E. NUMBER	SIGNATURE

