



STATE OF MAINE  
 DEPARTMENT OF TRANSPORTATION  
 16 STATE HOUSE STATION  
 AUGUSTA, MAINE  
 04333-0016

JOHN ELIAS BALDACCI  
 GOVERNOR

DAVID A. COLE  
 COMMISSIONER

March 27, 2009  
 Subject: **T2 R8**  
 Federal Project No. BR-1562(700)S  
 State Pin No.015627.00  
**Amendment No. 1**

Dear Sir/Ms:

Make the following changes to the Bid Documents:

In the Bid Book (pages 4 through 8), **REMOVE** the "SCHEDULE OF ITEMS" 5 pages dated 090309 and **REPLACE** with the attached new "SCHEDULE OF ITEMS", 5 pages dated 090327.

In the Plans, **REMOVE** Plan Sheets 2, 5 and 6 of 11 and **REPLACE** with the attached, revised Plan Sheets 2, 5 and 6 of 11.

**NOTE:** Plan sheets, in the size and quantity ordered, will be FedExed or mailed to individuals who purchased plans.

In the Amended Plans, Plan Sheet 2 of 11, "ESTIMATED QUANTITIES", **DELETE** the following items:

<b><u>506.18</u></b>	<b><u>CONTAINMENT AND POLLUTION CONTROL</u></b>	<b><u>1</u></b>	<b><u>LS</u></b>
<b><u>506.191</u></b>	<b><u>DISPOSAL OF SPECIAL WASTE OR HAZARDOUS WASTE</u></b>		
	<b><u>MATERIAL</u></b>	<b><u>1</u></b>	<b><u>LS</u></b>

Make this change in pen and ink.

The following questions have been received:

**Question:** Are the structural steel repairs to the existing flanges called out somewhere in the contract documents or are they part of pay Item 504.811?

**Response:** The structural steel repairs to the existing flanges are identified on sheet 6, Framing Plan, and sheet 7, Framing Details, and on page 3 of 3 of special provision, Section 504, Miscellaneous Structural Steel Repairs.

**Question:** Is pay Item 506.9102 specific to the new steel only? If it is, how can we bid a lump sum price if we do not know the exact quantity of structural steel required? Or is it supposed to be based on the 8,200 pounds specified?



PRINTED ON RECYCLED PAPER

**Response:** Pay Items 506.18, 506.191 and 506.9102 are incidental to structural steel Item 504.811. Please see the above changes.

**Question:** It is my interpretation that the only things included in pay item 504.811 are the 24 new diaphragms and the 48 new connection plates. Is this correct?

**Response:** MaineDOT does not agree with your interpretation. The flange repair material is also included, as stated in Special Provision Section 504.

**Question:** In reference to Sheet 5, note 3, we are unclear to the extent of the work, can a detail be provided?

**Response:** Please see the new Plan Sheet 5 of 11, replaced in this amendment.

**Question:** In reference to Sheet 5, Abutment Demolition Section, is the demo included in item 202.137?

**Response:** All Structural Concrete to be removed is paid under Item 202.12

**Question:** Reference Sheet 7, Top Flange Repair, it is unclear how many top flange repairs are required. Due to the small quantity of steel and the labor intensive repair of the top flange detail, can the diaphragm replacement and the top flange repair be two bid items?

**Response:** Please see the new Plan Sheet 6 of 11, replaced in this amendment.

**Question:** Without an estimated quantity of top flange repairs for bid items, 506.18 and 506.191, there is no basis for the lump sum pricing. Can estimated quantities be provided?

**Response:** Please see the new Plan Sheet 6 of 11, replaced in this amendment.

**Question:** What is the connection detail for the temporary barrier on both the existing and new deck?

**Response:** Please see the new Plan Sheet 2 of 11, replaced in this amendment.

**Question:** On past projects, localized areas of lead paint have been removed from existing steel in conformance with OSHA regulations and without the SSPC QP1 and

QP2 certification requirements. Is it possible to eliminate the SSPC QP1 and QP2 requirement given the small amount of lead paint removal?

**Response:** Qp1/Qp2 certification is not necessary for field paint removal and field paint application. Field paint removal needs 100% containment per 506, vacuum power shrouded tools would qualify as 100% containment for small areas. All field applied paint shall be applied as per manufacturer's recommendations.  
Consider these changes and information prior to submitting your bid on April 1, 2009.

Sincerely,

A handwritten signature in black ink, appearing to read "Scott Bickford". The signature is written in a cursive style with some capital letters.

Scott Bickford  
Contracts & Specifications Engineer

SCHEDULE OF ITEMS

REVISED:

CONTRACT ID: 015627.00

PROJECT(S): BR-1562(700)S

CONTRACTOR : \_\_\_\_\_

LINE NO	ITEM DESCRIPTION	APPROX. QUANTITY AND UNITS	UNIT PRICE		BID AMOUNT	
			DOLLARS	CTS	DOLLARS	CTS
SECTION 0001 PROJECT ITEMS						
0010	202.12 REMOVING EXISTING STRUCTURAL CONCRETE	465.000 CY				
0020	202.13 REMOVING EXISTING RAILINGS (RETAINED BY DEPARTMENT)	922.000 LF				
0030	203.20 COMMON EXCAVATION	120.000 CY				
0040	203.24 COMMON BORROW	10.000 CY				
0050	304.10 AGGREGATE SUBBASE COURSE - GRAVEL	90.000 CY				
0060	403.207 HOT MIX ASPHALT 19.0 MM HMA	40.000 T				
0070	403.210 HOT MIX ASPHALT 9.5 MM HMA	300.000 T				
0080	403.213 HOT MIX ASPHALT 12.5 MM HMA BASE	20.000 T				
0090	409.15 BITUMINOUS TACK COAT - APPLIED	50.000 G				
0100	502.219 STRUCTURAL CONCRETE, ABUTMENTS AND RETAINING WALLS	LUMP	LUMP			

SCHEDULE OF ITEMS

REVISED:

CONTRACT ID: 015627.00

PROJECT(S): BR-1562(700)S

CONTRACTOR : \_\_\_\_\_

LINE NO	ITEM DESCRIPTION	APPROX. QUANTITY AND UNITS	UNIT PRICE		BID AMOUNT		
			DOLLARS	CTS	DOLLARS	CTS	
0110	502.26 STRUCTURAL CONCRETE ROADWAY AND SIDEWALK SLABS ON STEEL BRIDGES	LUMP	LUMP				
0120	503.12 REINFORCING STEEL, FABRICATED AND DELIVERED	600.000 LB					
0130	503.13 REINFORCING STEEL, PLACING	600.000 LB					
0140	504.811 STRUCTURAL STEEL REPAIR DIAPHRAGM REPLACEMENT	6850.000 LB					
0150	504.811 STRUCTURAL STEEL REPAIR FLANGE REPAIR	1350.000 LB					
0160	505.08 SHEAR CONNECTORS	LUMP	LUMP				
0170	508.13 MEMBRANE WATERPROOFING	LUMP	LUMP				
0180	514.06 CURING BOX FOR CONCRETE CYLINDERS	1.000 EA					
0190	515.20 PROTECTIVE COATING FOR CONCRETE SURFACES	800.000 SY					
0200	520.21 EXPANSION DEVICE - GLAND SEAL	2.000 EA					
0210	524.40 PROTECTIVE SHIELD	LUMP	LUMP				

SCHEDULE OF ITEMS

REVISED:

CONTRACT ID: 015627.00

PROJECT(S): BR-1562(700)S

CONTRACTOR : \_\_\_\_\_

LINE NO	ITEM DESCRIPTION	APPROX. QUANTITY AND UNITS	UNIT PRICE		BID AMOUNT	
			DOLLARS	CTS	DOLLARS	CTS
0220	526.301 TEMPORARY CONCRETE BARRIER TYPE I	LUMP	LUMP			
0230	526.321 PERMANENT CONCRETE BARRIER TYPE III A	LUMP	LUMP			
0240	527.34 WORK ZONE CRASH CUSHIONS	2.000 UN				
0250	606.1721 BRIDGE TRANSITION - TYPE 1	4.000 EA				
0260	606.23 GUARDRAIL TYPE 3C - SINGLE RAIL	100.000 LF				
0270	615.07 LOAM	10.000 CY				
0280	618.1401 SEEDING METHOD NUMBER 2 - PLAN QUANTITY	1.000 UN				
0290	619.12 MULCH	1.000 UN				
0300	619.1401 EROSION CONTROL MIX	15.000 CY				
0310	627.711 WHITE OR YELLOW PAINTED PAVEMENT MARKING LINE (PLAN QUANTITY)	1530.000 LF				
0320	629.05 HAND LABOR, STRAIGHT TIME	40.000 HR				

SCHEDULE OF ITEMS

REVISED:

CONTRACT ID: 015627.00

PROJECT(S): BR-1562(700)S

CONTRACTOR : \_\_\_\_\_

LINE NO	ITEM DESCRIPTION	APPROX. QUANTITY AND UNITS	UNIT PRICE		BID AMOUNT	
			DOLLARS	CTS	DOLLARS	CTS
0330	631.12 ALL PURPOSE EXCAVATOR (INCLUDING OPERATOR)	20.000 HR				
0340	631.15 ROLLER, EARTH AND BASE COURSE (INCLUDING OPERATOR )	20.000 HR				
0350	631.172 TRUCK - LARGE (INCLUDING OPERATOR)	20.000 HR				
0360	639.19 FIELD OFFICE TYPE B	1.000 EA				
0370	643.72 TEMPORARY TRAFFIC SIGNAL	LUMP	LUMP			
0380	652.30 FLASHING ARROW BOARD	2.000 EA				
0390	652.35 CONSTRUCTION SIGNS	100.000 SF				
0400	652.38 FLAGGER	40.000 HR				
0410	652.39 WORK ZONE TRAFFIC CONTROL	LUMP	LUMP			
0420	652.41 PORTABLE CHANGEABLE MESSAGE SIGN	2.000 EA				
0430	659.101 MOBILIZATION	LUMP	LUMP			
	SECTION 0001 TOTAL					

SCHEDULE OF ITEMS

REVISED:

CONTRACT ID: 015627.00

PROJECT(S): BR-1562(700)S

CONTRACTOR : \_\_\_\_\_

LINE NO	ITEM DESCRIPTION	APPROX. QUANTITY AND UNITS	UNIT PRICE		BID AMOUNT	
			DOLLARS	CTS	DOLLARS	CTS
	TOTAL BID					



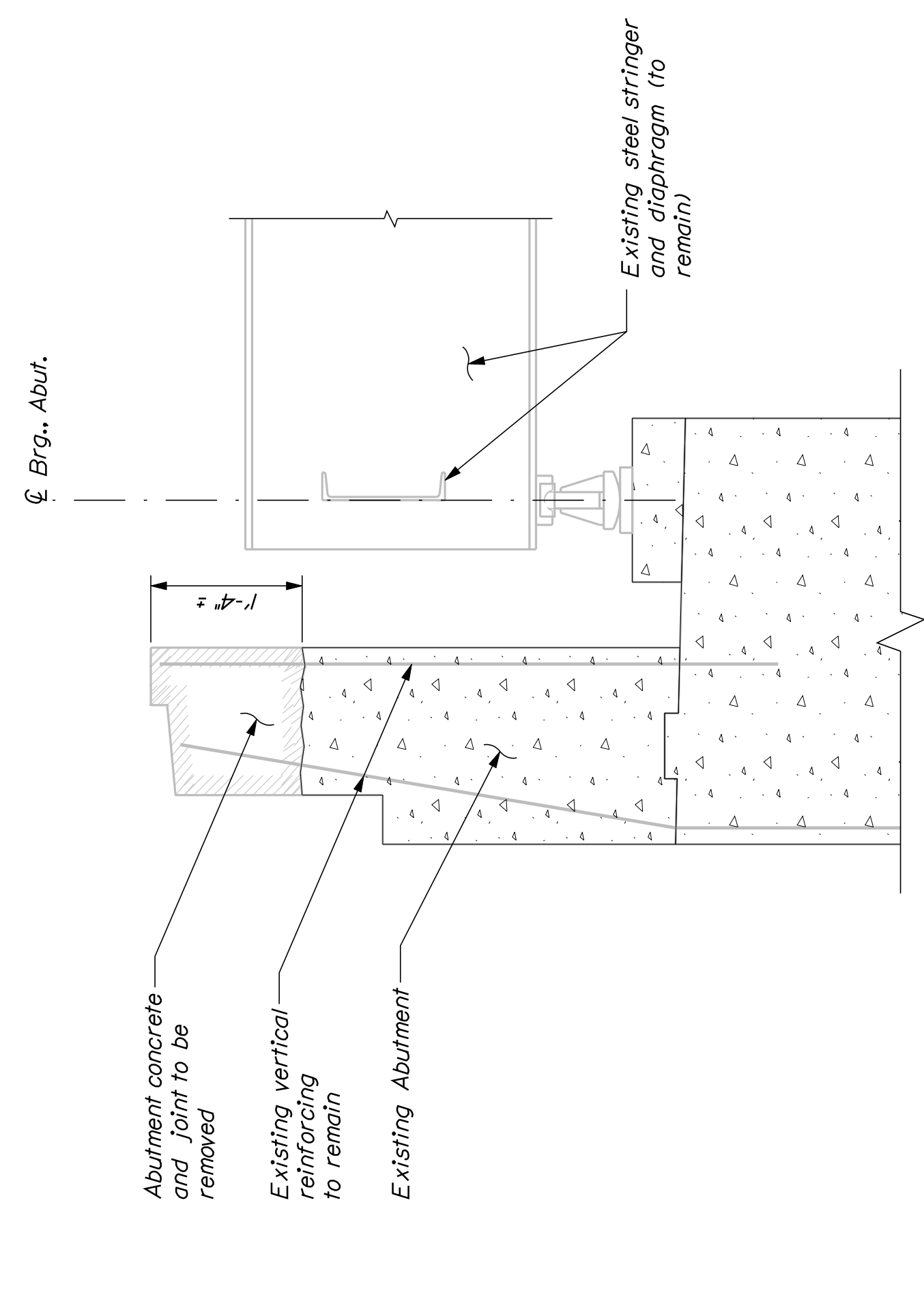
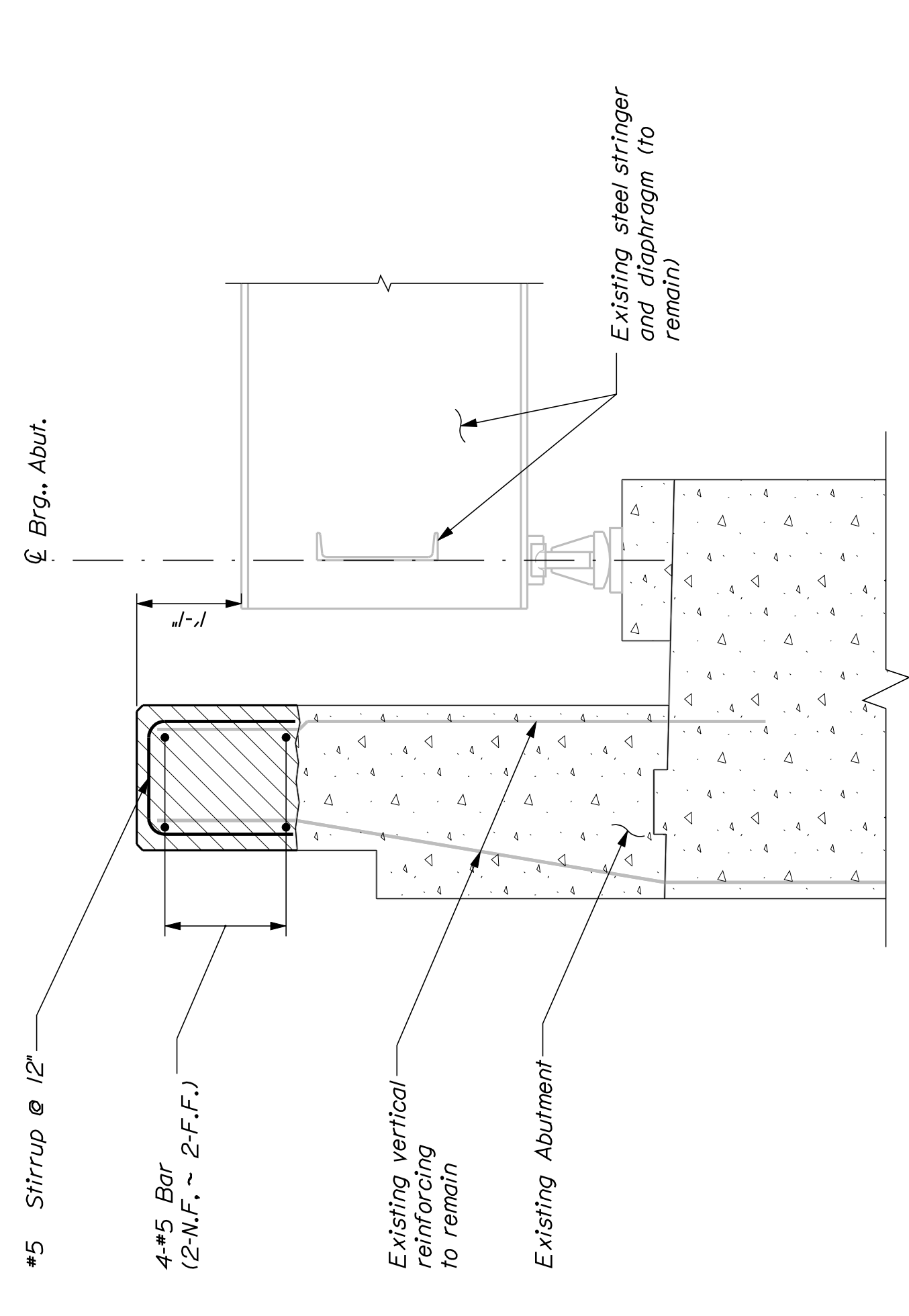
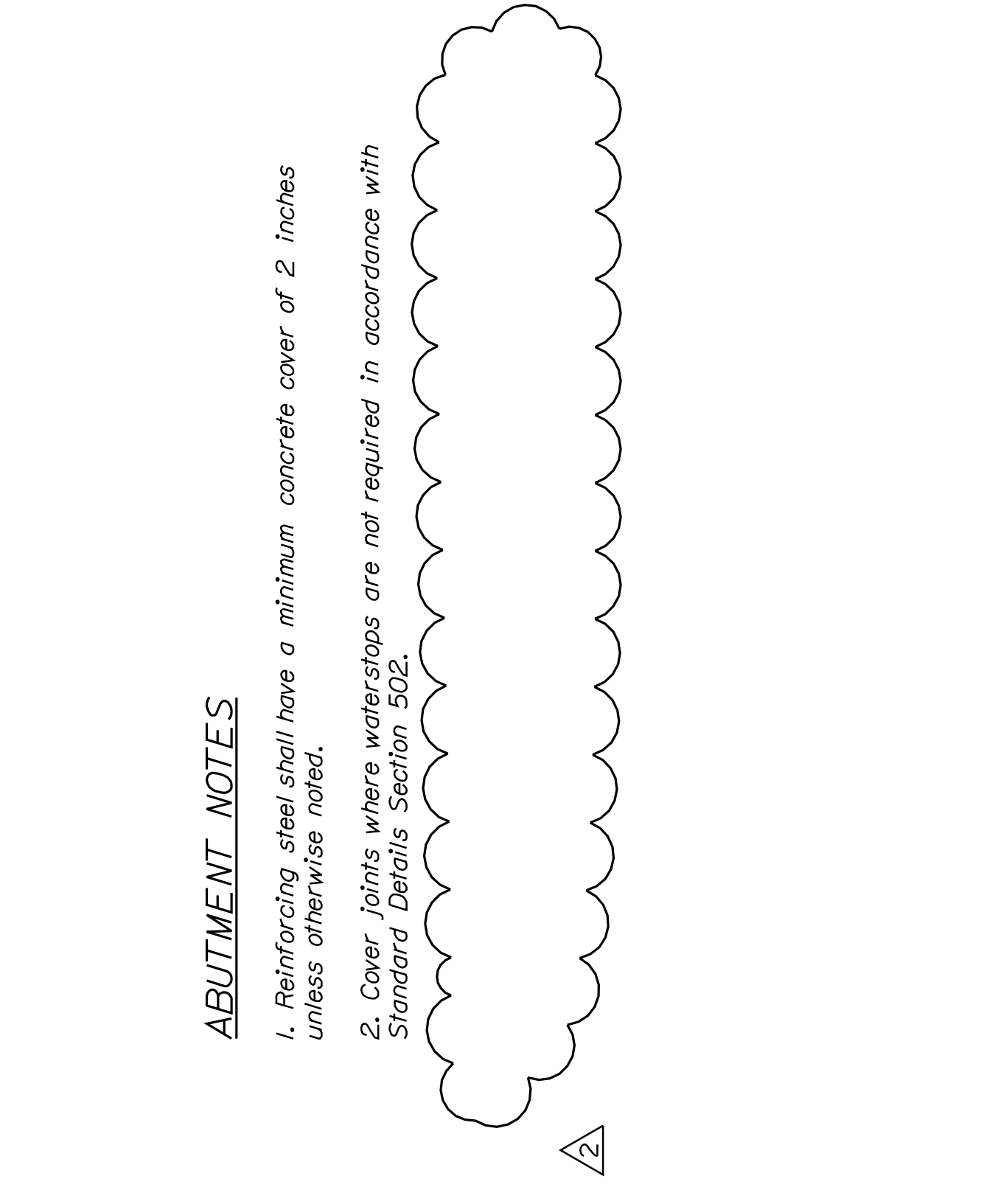
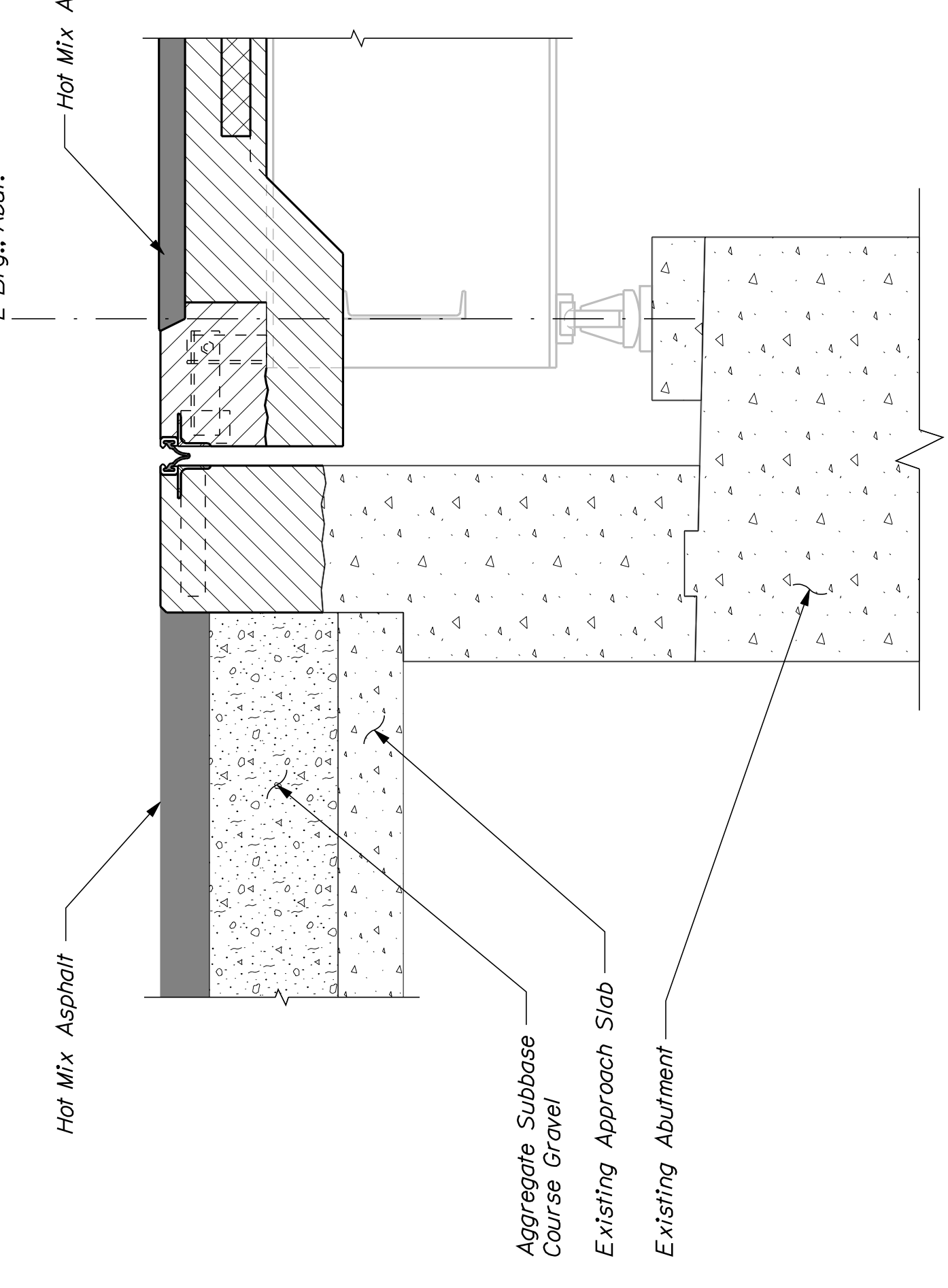
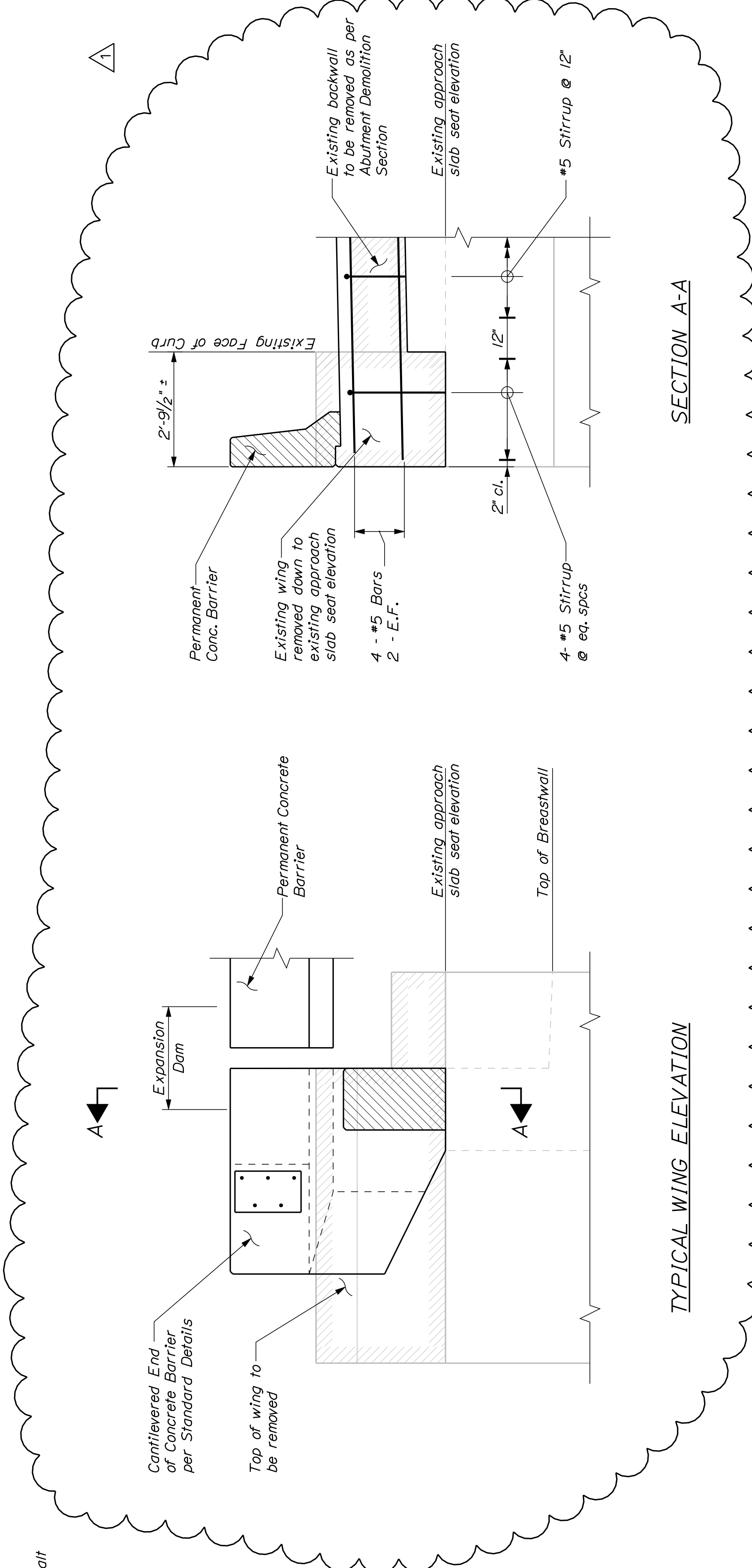
ESTIMATED QUANTITIES			
ITEM NO.	DESCRIPTION	QUANTITY	UNIT
202.12	REM EXIST STRUCTURAL CONCRETE	465	CY
202.13	REM EXIST RAILINGS - RET. BY DEPARTMENT	922	LF
203.20	COMMON EXCAVATION	120	CY
203.24	COMMON BORROW	10	CY
304.10	AGGR SUBB COURSE - GRAVEL	90	CY
403.20T	HOT MIX ASPHALT 190 MM HMA	40	T
403.210	HOT MIX ASPHALT 9.5 MM HMA	300	T
403.213	HOT MIX ASPHALT 12.5 MM HMA BASE	20	T
409.15	BITUMINOUS TACK COAT APPLIED	50	G
502.219	STR CONC ABUT & RET WALL	1	LS
502.26	STR CONC RD&SW SLAB ON ST BR	1	LS
503.12	REINF STEEL FAB & DEL	600	LB
503.13	REINF STEEL PLACING	600	LB
504.811	STRUCTURAL STEEL REPAIR: DIAPHRAGM REPLACEMENT	6850	LB
504.811	STRUCTURAL STEEL REPAIR: FLANGE REPAIR	1350	LB
505.08	SHEAR CONNECTORS	1	LS
506.18	CONTAINMENT AND POLLUTION CONTROL	1	LS
506.191	DISPOSAL OF SPECIAL WASTE OR HAZARDOUS WASTE MATERIAL	1	LS
508.13	MEMBRANE WATERPROOFING	1	LS
514.06	CURING BOX FOR CONCRETE CYLINDERS	1	EA
515.20	PROT COAT FOR CONC SURFACES	800	SY
520.21	EXPANSION DEVICE - GLAND SEAL	2	EA
524.40	PROTECTIVE SHIELD	1	LS
526.301	TEMPORARY CONC BARRIER TYPE I	1	LS
526.321	PERMANENT CONC BARRIER TYPE III A	1	LS
527.34	WORK ZONE CRASH CUSHIONS	2	UN
606.1721	BRIDGE TRANSITION - TYPE I	4	EA
606.23	GR TY 3C - SINGLE RAIL	100	LF
615.07	LOAM	10	CY
618.1401	SEEDING METHOD NUMBER 2 - PLAN QUANTITY	1	UN
619.12	MULCH	1	UN
619.1401	EROSION CONTROL MIX	15	CY
627.711	WH OR YELL PAINT PYMT MARKING LINE	1530	LF
629.05	HAND LABOR, STRAIGHT TIME	40	HR
631.12	ALL-PURPOSE EXC (INC OPERATOR)	20	HR
631.15	ROLLER EARTH BASE CRS (INC OP)	20	HR
631.172	TRUCK-LARGE (INC OPERATOR)	20	HR
639.19	FIELD OFFICE TYPE B	1	EA
643.72	TEMPORARY TRAFFIC SIGNAL	1	LS
652.30	FLASHING ARROW BOARD	2	EA
652.35	CONSTRUCTION SIGNS	100	SF
652.38	FLAGGERS	40	HR
652.39	WORK ZONE TRAFFIC CONTROL	1	LS
652.41	PORTABLE CHANGEABLE MESSAGE SIGNS	2	EA
659.101	MOBILIZATION	1	LS

**GENERAL CONSTRUCTION NOTES**

- All utility facilities shall be adjusted by the respective utilities unless otherwise noted.
- Protective Coating for Concrete Surfaces shall be applied to the following areas:
  - All exposed surfaces of concrete curbs and sidewalks.
  - Fascias down to the drip notch.
  - Concrete barrier railing.
  - Top of abutment backwalls and to one foot below the top of backwalls on the back side.
- Existing bridge plans may be accessed at the following web address: <https://www.maine.gov/motd/comprehensive-list-projects/project-information.php>. The plans are reproductions of the original drawings as prepared for the construction of the bridge. It is very unlikely that the plans will show any construction field changes or any alterations which may have been made to the bridge during its life span.
- Quantities included for pay items measured and paid for by Lump Sum are estimated quantities and are provided by MaineDOT for informational purposes only. Lump Sum pay items will be paid for at the Contract Bid amount, with no addition or reduction in payment to the Contractor if the actual final quantities are different from the MaineDOT provided estimated quantities, except as follows:
  - If a Lump Sum pay item is eliminated, the requirements of Standard Specifications Section 109.2, Elimination of Items, will take precedence.
  - If other Contract Documents specifically allow a change in payment for a Lump Sum pay item, those requirements will be followed.
  - If a design change results in changes to estimated quantities for Lump Sum pay items, price adjustments will be made in accordance with Standard Specifications Section 109.7, Equitable Adjustments to Compensation.
- The Contractor shall submit a Bridge Deck Demolition Plan to the Resident at least 10 business days prior to the start of demolition work. The plan shall outline the methods and equipment to be used to remove and dispose of all materials to be removed as dictated by the plans. No work related to the removal of the bridge shall be undertaken by the Contractor until MaineDOT has reviewed the Bridge Demolition Plan for appropriateness and completeness. Payment for all work necessary for developing, submitting and finalizing the Demolition Plan will be considered incidental to the concrete removal pay item.
- The steel portions of the existing bridge are coated with a lead-based paint system. The Contractor is responsible for the containment, proper management and disposal of all lead-contaminated hazardous waste generated by the process of demolishing the bridge deck and removal and replacement of any structural steel called for in the plans. The Contractor is responsible for implementing appropriate OSHA mandated personal protection standards related to this process. Once the existing bridge deck and any required structural steel is removed, the Contractor is solely responsible for the care, custody and control of the components of the existing bridge and any hazardous waste generated as a result of the storage, recycling or disposal of the bridge components, including lead-coated steel. The Contractor shall recycle or reuse the steel in accordance with the Maine Department of Environmental Protection's "Maine Hazardous Waste Management Regulations," Chapter 850. A copy of this regulation is available at MaineDOT's offices on Child Street in Augusta. The Contractor is also solely responsible for the care, custody and control of any hazardous waste generated as a result of the surface preparation required for the installation and subsequent coating of any new steel. Payment for all labor, materials, equipment and other costs required to remove, contain and dispose of any lead-coated steel will be considered incidental to the structural steel removal pay item.
- During previous rehabilitation work, a double row of shear connectors were added to all beam lines spanning at a point 3 feet from the E. Brg of each abutment.
- The temporary concrete barrier positioned on the existing and new bridge decks shall be positively attached to the concrete deck. The method of attachment shall be designed and stamped by a professional engineer registered in the State of Maine and approved by the Resident. This work shall not be paid for directly. Payment shall be considered incidental to related contract items.

PROJ. MANAGER	DRA	BY	DATE
DESIGN-DETAILED	RKC	BJN	
CHECKED-REVIEWED			
DESIGN-DETAILED			
DESIGN-DETAILED			
REVISIONS 1	▲	Note No. 8 Added	3/23/09
REVISIONS 2	▲	Qty Items changed	3/23/09
REVISIONS 3			
REVISIONS 4			
FIELD CHANGES			

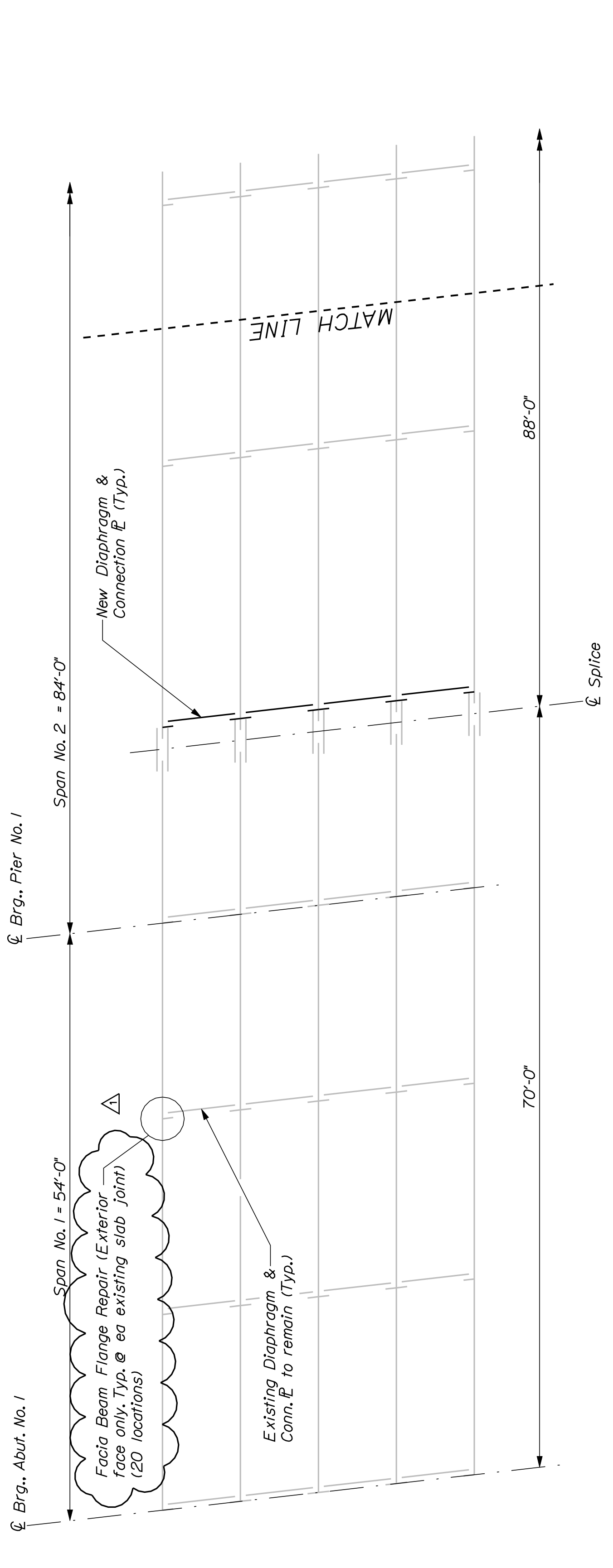
PROJ. MANAGER	DATE
DRA. BY	DATE
DESIGN-DETAILS	RKC
CHECKED-REVIEWED	
DESIGNS-DETAILED	
REVISIONS 1	King Details
REVISIONS 2	3/23/09
REVISIONS 3	P.E. NUMBER
REVISIONS 4	DATE
FIELD CHANGES	



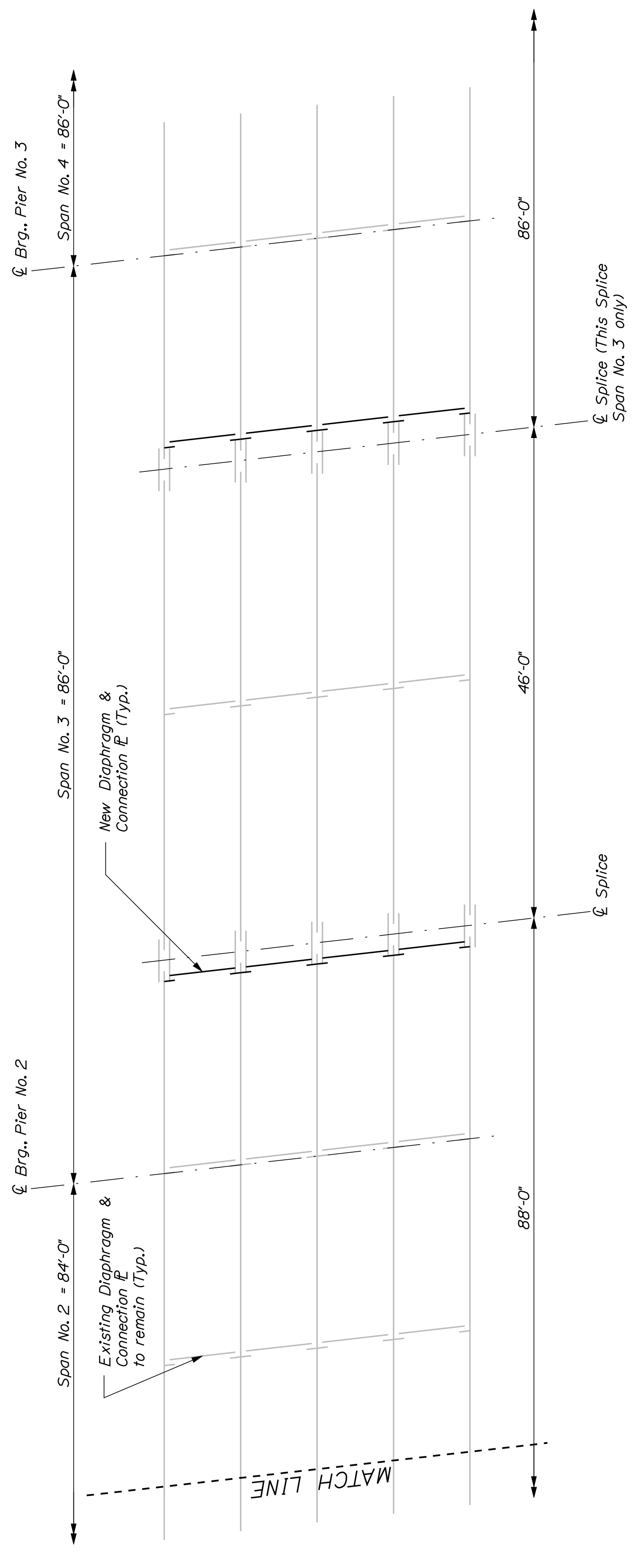
PROJ. MANAGER	DRA	BY	DATE
DESIGN-DETAILER	RKC		
CHECKED-REVIEWED			
DESIGN-DETAILED			
REVISIONS 1	NOTE Clarification	3/23/09	
REVISIONS 2	NOTE Changes	3/23/09	
REVISIONS 3			
REVISIONS 4			
FIELD CHANGES			

**STRUCTURAL STEEL NOTES**

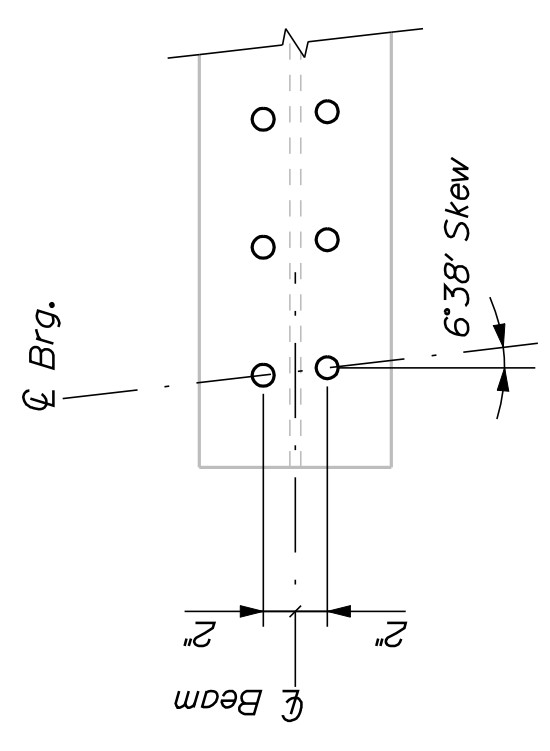
1. CWN testing not required on replacement steel
2. All fasteners shall be 7/8" φ ASTM A325, Type 1, Grip lengths shall be determined by the contractor
3. Paint shall be shop applied except in areas shown on plans. Some field painting may be necessary including areas around field welds and touch up of damaged areas. Any field painting necessary shall not be paid for directly but shall be considered incidental to Item No. 504.811 Structural Steel Repair
4. Connector plates for diaphragms to be replaced shall be removed in their entirety.
5. Paint shall be Inorganic Zinc, shop applied, from the NEPCOAT Qualified Products List "A". Paint shall consist of a single coat, the primer coat, and shall be in accordance with Special Provision 506.



**FRAMING PLAN**  
Rotate 180° about  $\bar{\bar{C}}$  Pier No. 3  
For Span Nos. 5 & 6



**FRAMING PLAN**  
Rotate 180° about  $\bar{\bar{C}}$  Pier No. 3  
For Span Nos. 4 & 5



**TRANSVERSE SHEAR STUD SPACING**