



STATE OF MAINE
 DEPARTMENT OF TRANSPORTATION
 16 STATE HOUSE STATION
 AUGUSTA, MAINE
 04333-0016

JOHN ELIAS BALDACCI
 GOVERNOR

DAVID A. COLE
 COMMISSIONER

April 15, 2009
 Subject: **Portland**
 Federal Project No. BH-1015(800)S
 State Pin No. 010158.00
Amendment No. 1

Dear Sir/Ms:

Make the following changes to the Bid Documents:

In the Bid Book (pages 4 through 9), **REMOVE** the “SCHEDULE OF ITEMS” 6 pages dated 090326 and **REPLACE** with the attached new “SCHEDULE OF ITEMS” 6 pages dated 090414.

In the Plans, Sheet Number 2 of 38, **ADD** the following item to the “ESTIMATED QUANTITIES” in pen and ink:

Item No.	Description	Quantity	Unit
652.41	PORTABLE – CHANGE MESSAGE SIGN	2	EA

In the Plans, **REMOVE** Plans Sheets 29 of 38, 30 of 38 and 31 of 38 and **REPLACE** with the attached new Plan Sheets 29 of 38, 30 of 38 and 31 of 38 revised on 04-13-09.

Note: Plans will be sent via FedEx or mail to plan holders in the quantity ordered.

The following question has been received:

Question: Reference the Right of Way map, drawing 38 of the plans – it appears that FairPoint has existing telephone/communication lines located on the existing bridge, west side: Do these lines stay in service until the new lines are run through the new duct banks and spliced back into the existing lines? The existing overhead lines crossing Veranda St. at approximately station 33+65, are they intended to stay in place during construction?

Response: New lines need to be active prior to the old lines being demoed. See Special Provision 104, CMP and TimeWarner plan to gap the area during construction.

Consider these changes and information prior to submitting your bid on April 22, 2009.



PRINTED ON RECYCLED PAPER

Sincerely,

A handwritten signature in black ink, appearing to read "Scott Bickford" with a stylized flourish at the end.

Scott Bickford
Contracts & Specifications Engineer

SCHEDULE OF ITEMS

CONTRACT ID: 010158.00

PROJECT(S): BH-1015(800)S

CONTRACTOR : _____

LINE NO	ITEM DESCRIPTION	APPROX. QUANTITY AND UNITS	UNIT PRICE		BID AMOUNT	
			DOLLARS	CTS	DOLLARS	CTS
SECTION 0001 COMMON ITEMS						
0010	202.17 REMOVING EXISTING STRUCTURAL CONCRETE	LUMP	LUMP			
0020	202.19 REMOVING EXISTING BRIDGE	LUMP	LUMP			
0030	203.20 COMMON EXCAVATION	860.000 CY				
0040	203.25 GRANULAR BORROW	1140.000 CY				
0050	206.082 STRUCTURAL EARTH EXCAVATION - MAJOR STRUCTURES	440.000 CY				
0060	304.10 AGGREGATE SUBBASE COURSE - GRAVEL	1100.000 CY				
0070	403.209 HOT MIX ASPHALT 9.5 MM HMA (SIDEWALKS, DRIVES, INCIDENTALS)	10.000 T				
0080	403.210 HOT MIX ASPHALT 9.5 MM HMA	284.000 T				
0090	403.213 HOT MIX ASPHALT 12.5 MM HMA BASE	140.000 T				
0100	409.15 BITUMINOUS TACK COAT - APPLIED	80.000 G				

MAINE DEPARTMENT OF TRANSPORTATION

PAGE: 2

SCHEDULE OF ITEMS

DATE: 090414

REVISED:

CONTRACT ID: 010158.00

PROJECT(S): BH-1015(800)S

CONTRACTOR : _____

LINE NO	ITEM DESCRIPTION	APPROX. QUANTITY AND UNITS	UNIT PRICE		BID AMOUNT	
			DOLLARS	CTS	DOLLARS	CTS
0110	501.301 STEEL SHEET PILING	LUMP	LUMP			
0120	502.219 STRUCTURAL CONCRETE, ABUTMENTS AND RETAINING WALLS	LUMP	LUMP			
0130	502.31 STRUCTURAL CONCRETE APPROACH SLABS	LUMP	LUMP			
0140	502.49 STRUCTURAL CONCRETE CURBS AND SIDEWALK	LUMP	LUMP			
0150	502.56 CONCRETE FILL	CY	211.000			
0160	503.12 REINFORCING STEEL, FABRICATED AND DELIVERED	LB	96150.000			
0170	503.13 REINFORCING STEEL, PLACING	LB	96150.000			
0180	507.0831 STEEL BRIDGE RAILING, 4 BAR	LUMP	LUMP			
0190	508.14 HIGH PERFORMANCE WATERPROOFING MEMBRANE	LUMP	LUMP			
0200	512.081 FRENCH DRAINS	LUMP	LUMP			
0210	514.06 CURING BOX FOR CONCRETE CYLINDERS	EA	1.000			

MAINE DEPARTMENT OF TRANSPORTATION

PAGE: 3

SCHEDULE OF ITEMS

DATE: 090414

REVISED:

CONTRACT ID: 010158.00

PROJECT(S): BH-1015(800)S

CONTRACTOR : _____

LINE NO	ITEM DESCRIPTION	APPROX. QUANTITY AND UNITS	UNIT PRICE		BID AMOUNT	
			DOLLARS	CTS	DOLLARS	CTS
0220	515.21 PROTECTIVE COATING FOR CONCRETE SURFACES	LUMP	LUMP			
0230	526.34 PERMANENT CONCRETE TRANSITION BARRIER	EA	4.000			
0240	527.303 ENERGY ABSORBING SYSTEM (ET-PLUS)	EA	4.000			
0250	535.60 PRESTRESSED STRUCTURAL CONCRETE SLAB	LUMP	LUMP			
0260	603.157 12 INCH PVC PIPE PERFORATED	LF	224.000			
0270	605.11 12 INCH UNDERDRAIN TYPE C	LF	470.000			
0280	606.1721 BRIDGE TRANSITION - TYPE 1	EA	4.000			
0290	606.23 GUARDRAIL TYPE 3C - SINGLE RAIL	LF	150.000			
0300	606.353 REFLECTORIZED FLEXIBLE GUARDRAIL MARKER	EA	8.000			
0310	608.08 REINFORCED CONCRETE SIDEWALK	SY	310.000			
0320	609.11 VERTICAL CURB TYPE 1	LF	434.000			

MAINE DEPARTMENT OF TRANSPORTATION

PAGE: 4

SCHEDULE OF ITEMS

DATE: 090414

REVISED:

CONTRACT ID: 010158.00

PROJECT(S): BH-1015(800)S

CONTRACTOR : _____

LINE NO	ITEM DESCRIPTION	APPROX. QUANTITY AND UNITS	UNIT PRICE		BID AMOUNT	
			DOLLARS	CTS	DOLLARS	CTS
0330	609.12 VERTICAL CURB TYPE 1 - CIRCULAR	25.000 LF				
0340	609.237 TERMINAL CURB TYPE 1 - 7 FOOT	6.000 EA				
0350	609.2371 TERMINAL CURB TYPE 1- 7 FT - CIRCULAR	4.000 EA				
0360	610.11 STONE BLANKET ARMORING STONE	28.000 CY				
0370	613.319 EROSION CONTROL BLANKET	35.000 SY				
0380	615.07 LOAM	34.000 CY				
0390	618.1401 SEEDING METHOD NUMBER 2 - PLAN QUANTITY	6.000 UN				
0400	619.1201 MULCH - PLAN QUANTITY	6.000 UN				
0410	619.1401 EROSION CONTROL MIX	68.000 CY				
0420	620.56 DRAINAGE GEOTEXTILE	395.000 SY				
0430	627.711 WHITE OR YELLOW PAINTED PAVEMENT MARKING LINE (PLAN QUANTITY)	800.000 LF				

MAINE DEPARTMENT OF TRANSPORTATION

PAGE: 5

SCHEDULE OF ITEMS

DATE: 090414

REVISED:

CONTRACT ID: 010158.00

PROJECT(S): BH-1015(800)S

CONTRACTOR : _____

LINE NO	ITEM DESCRIPTION	APPROX. QUANTITY AND UNITS	UNIT PRICE		BID AMOUNT	
			DOLLARS	CTS	DOLLARS	CTS
0440	629.05 HAND LABOR, STRAIGHT TIME	40.000 HR				
0450	631.10 AIR COMPRESSOR (INCLUDING OPERATOR)	20.000 HR				
0460	631.11 AIR TOOL (INCLUDING OPERATOR)	20.000 HR				
0470	631.12 ALL PURPOSE EXCAVATOR (INCLUDING OPERATOR)	40.000 HR				
0480	631.172 TRUCK - LARGE (INCLUDING OPERATOR)	40.000 HR				
0490	639.18 FIELD OFFICE TYPE A	1.000 EA				
0500	652.35 CONSTRUCTION SIGNS	300.000 SF				
0510	652.38 FLAGGER	600.000 HR				
0520	652.39 WORK ZONE TRAFFIC CONTROL	LUMP	LUMP			
0530	652.41 PORTABLE CHANGEABLE MESSAGE SIGN	2.000 EA				
0540	656.75 TEMPORARY SOIL EROSION AND WATER POLLUTION CONTROL	LUMP	LUMP			

SCHEDULE OF ITEMS

CONTRACT ID: 010158.00

PROJECT(S): BH-1015(800)S

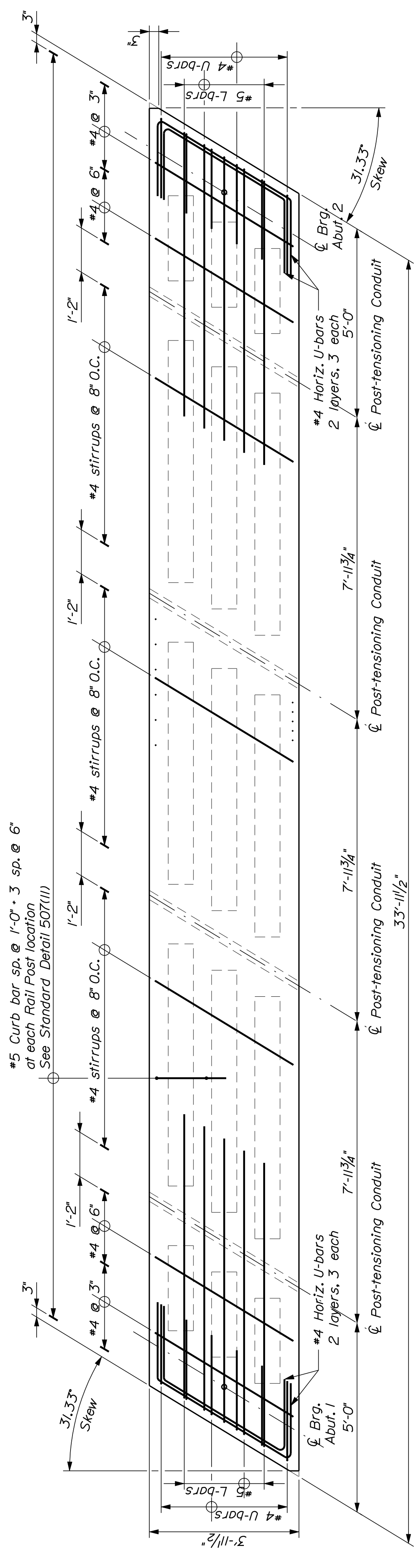
CONTRACTOR : _____

LINE NO	ITEM DESCRIPTION	APPROX. QUANTITY AND UNITS	UNIT PRICE		BID AMOUNT	
			DOLLARS	CTS	DOLLARS	CTS
0550	659.10 MOBILIZATION	LUMP	LUMP			
0560	823.011 GATE VALVE BOX, INSTALL ONLY	EA 1.000				
0570	823.332 GATE VALVE BOX, ADJUST TO GRADE	EA 8.000				
	SECTION 0001 TOTAL					.
SECTION 0002 OPTION NO.1 TELEPHONE UTILITY						
0580	890.01 SPECIAL WORK #1 (TELEPHONE)	LUMP	LUMP			
	SECTION 0002 TOTAL					.
SECTION 0003 OPTION NO.2 GAS UTILITY						
0590	890.021 SPECIAL WORK #2 (GAS LINE)	LUMP	LUMP			
	SECTION 0003 TOTAL					
	TOTAL BID					

PROJ. MANAGER	J. WENTWORTH	BY	DATE
DESIGN-DETAILER	R. NAOUS	TEAM	S.
CHECKED-REVIEWED			
DESIGN-DETAILED			
REVISIONS 1	note & strand designation	04-13-09	P.E. NUMBER
REVISIONS 2			
REVISIONS 3			
REVISIONS 4			
FIELD CHANGES			

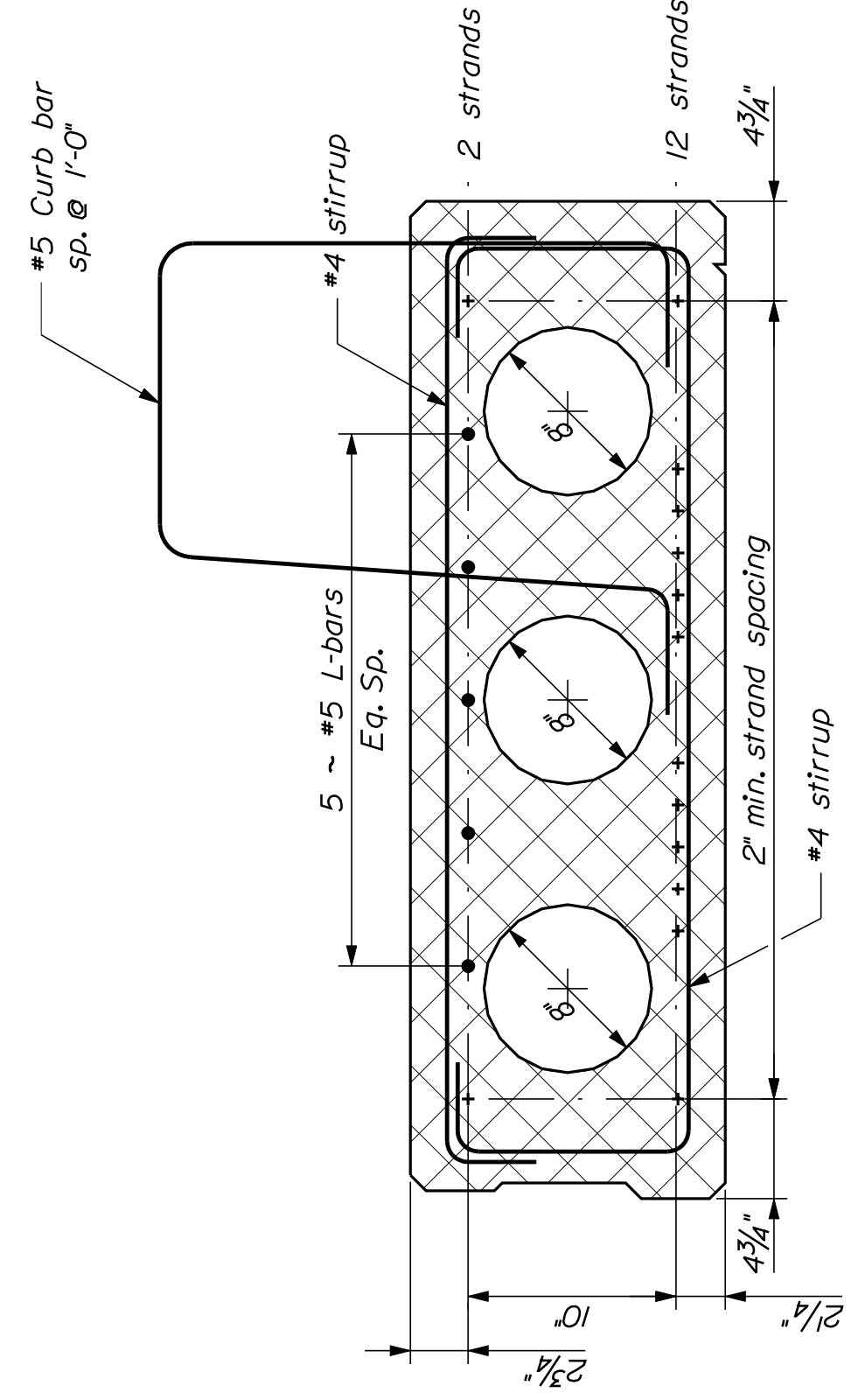
PRECAST CONCRETE SUPERSTRUCTURE NOTES

1. Reinforcing steel shall have a minimum concrete cover of 2 inches unless otherwise noted.
2. Install a 1-in. diameter nonmetallic void drain in the bottom of each void at both ends.
3. The top surface of the upper flange of the prestressed beams shall be rated to a surface roughness of $\pm 1/4$ inch, except at locations corresponding to the blocking points. At these locations a flattened area of sufficient size shall be finished to facilitate taking elevations for setting bottom of slab elevations.
4. Neoprene pads shall be either polychloroprene or natural polyisoprene of 50+5 Shore A durometer hardness, and shall conform to the requirements of Division 2, Section 18.2 of AASHTO Standard Specifications for Highway Bridges. Neoprene pads will not be paid for directly but will be considered incidental to related contract items.
5. Post tensioning shall be covered by a seamless polypropylene sheath, with corrosion inhibiting grease between the strands and sheath, for the full length of the strand except at the anchorage location.
6. The Contractor shall calibrate the jacking equipment as necessary to provide an anchorage of 38 to 41 kips after setting losses in each 0.6-in. diameter post tensioning strand.
7. Scribed rails shall be installed to the elevation shown on the profile, adjusted for wearing course thickness and cross slope.
8. All prestressed & post tensioned strands are 0.6 inch diameter, low relaxation 270 ksi.
9. The initial prestressing force before transfer shall be 44 kips.

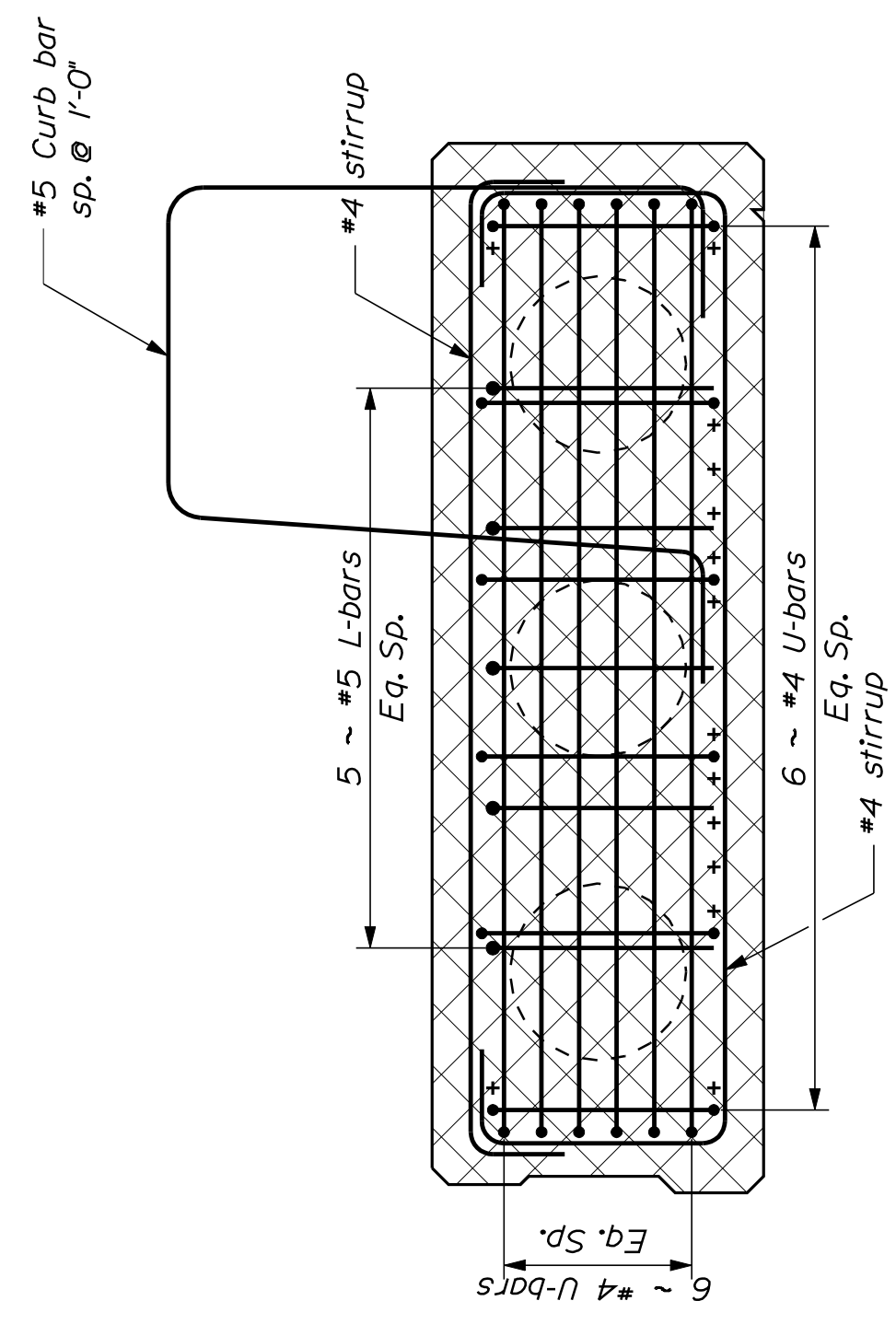


EXTERIOR PRECAST VOIDED SLAB
Strands Omitted For Clarity
Exterior Girders 1 & 13

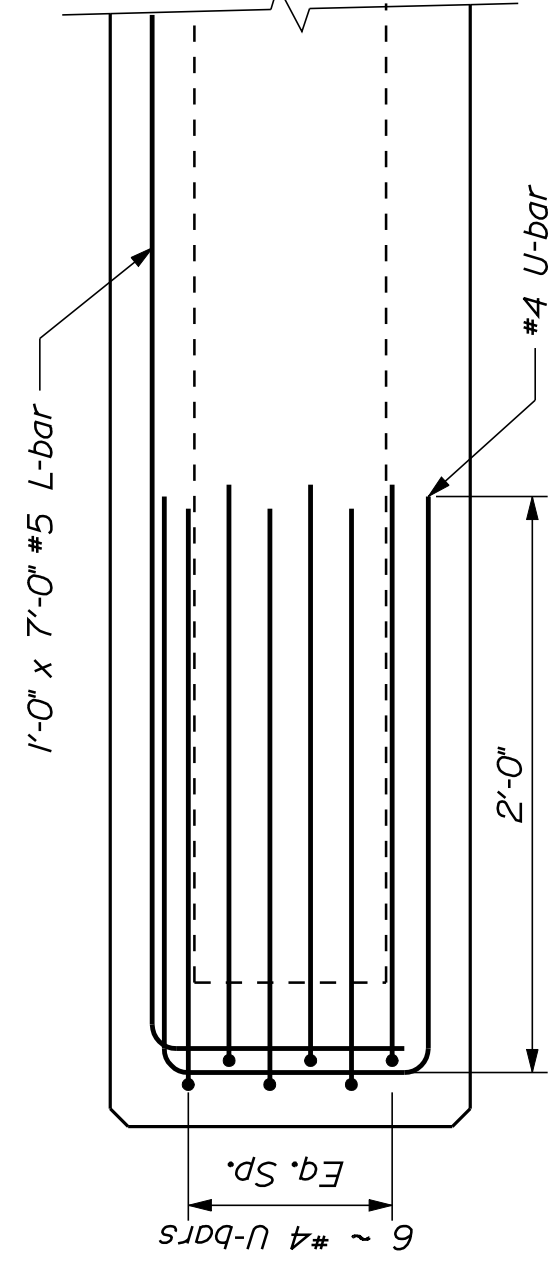
NOTE
Concerning fanned reinforcing:
maintain max. spacing of 6" O.C. &
2" min. clear spacing between
adjacent stirrups



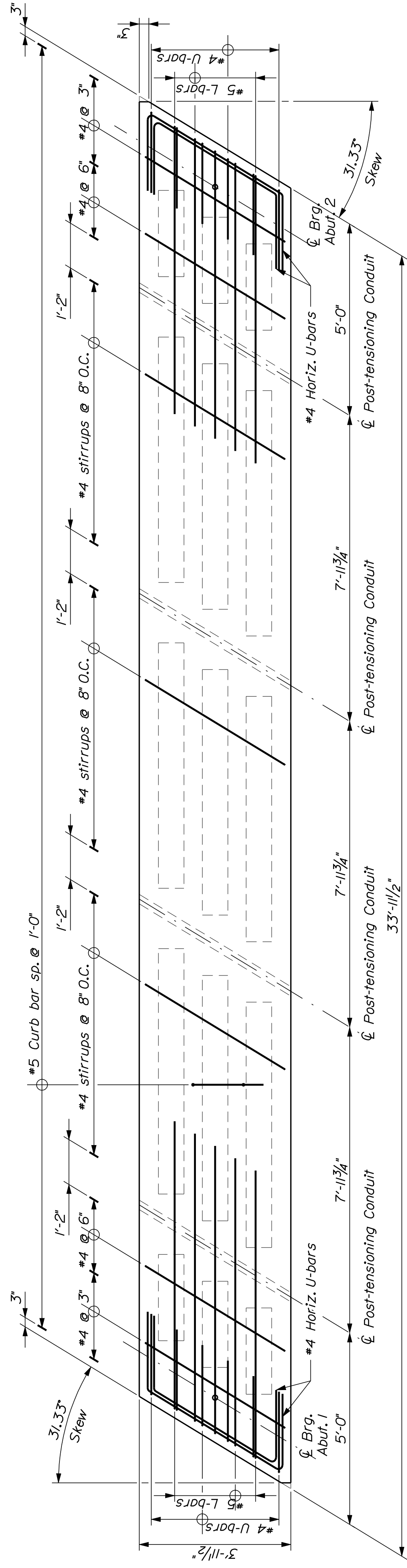
VOIDED SLAB REINFORCEMENT @ MID SPAN
Exterior Girders 1 & 13



VOIDED SLAB REINFORCEMENT @ ENDS
Exterior Girders 1 & 13



LONGITUDINAL SECTION @ ENDS
Exterior Girders 1 & 13

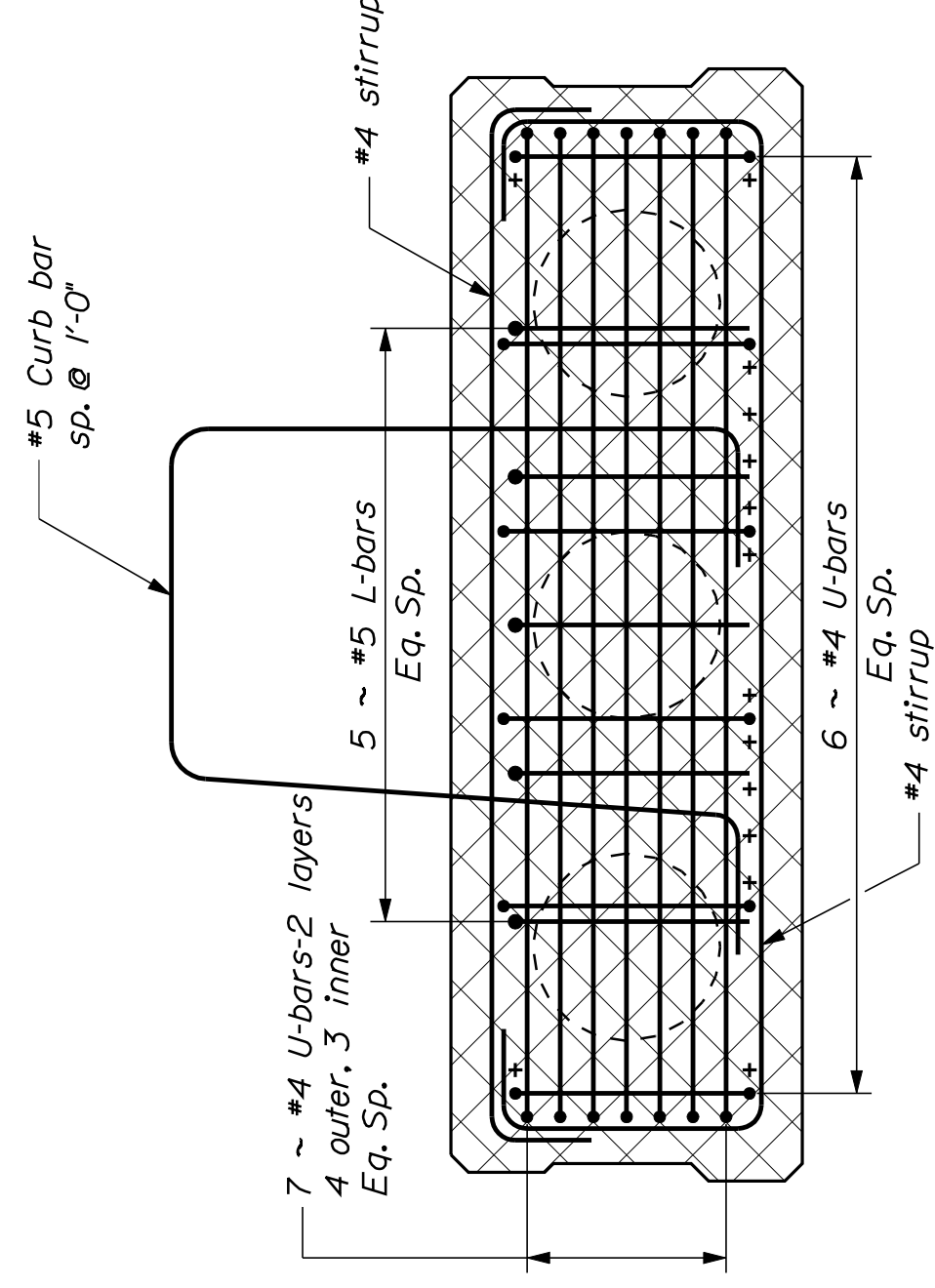


INTERIOR PRECAST VOIDED SLAB

Strands Omitted For Clarity
Sidewalk Girders 2 & 12

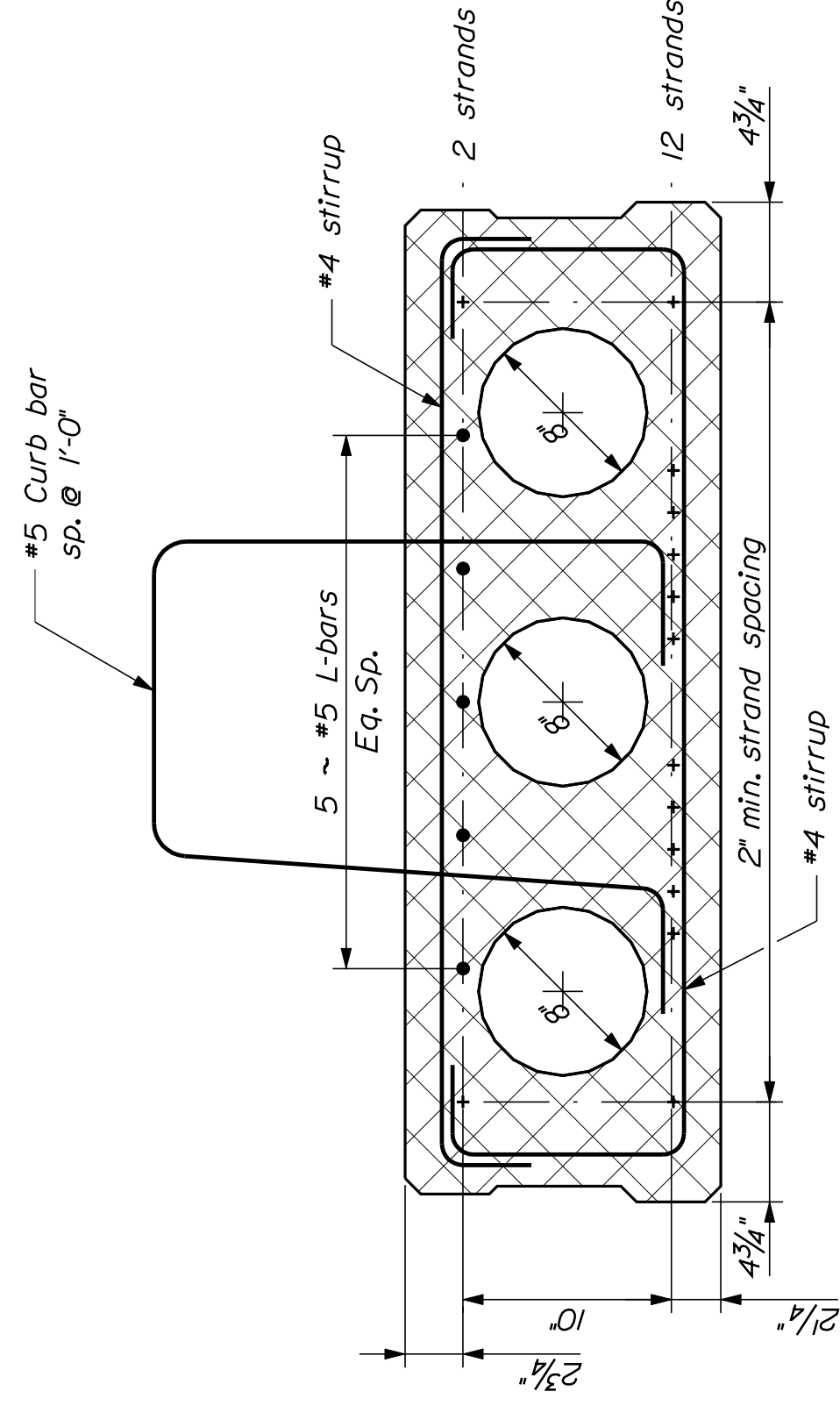
NOTE

Concerning fanned reinforcing:
maintain max. spacing of 6" O.C. &
2" min. clear spacing between
adjacent stirrups



LONGITUDINAL SECTION @ ENDS

Interior Girders 2 & 12



VOIDED SLAB REINFORCEMENT @ MID SPAN

Interior Girders 2 & 12

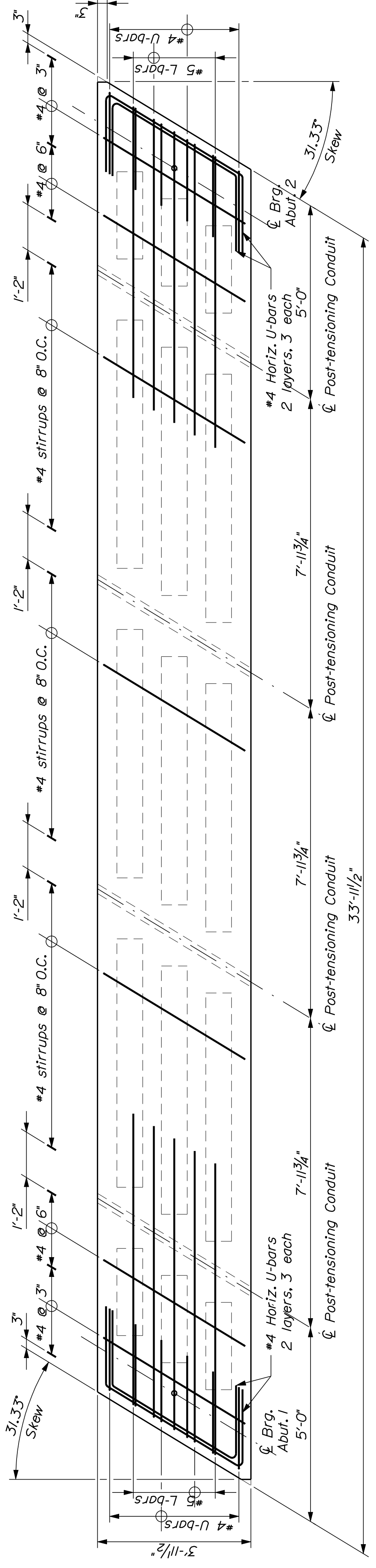
STATE OF MAINE DEPARTMENT OF TRANSPORTATION	BH-1015(800)X PIN	BRIDGE NO. 5052 010158.00
VERANDA STREET OVERPASS ST. LAWRENCE & ATLANTIC R.R. PORTLAND CUMBERLAND COUNTY	PRECAST VOIDED SLAB 2 & 12	
PROJ. MANAGER J. WENTWORTH TEAM S. CHECKED-REVIEWED DESIGN-DETAILED	DATE	DATE
REVISIONS 1 DESIGNS-DETAILED	REVISIONS 2 STAND DESIGNATION	REVISIONS 3 REVISIONS 4 FIELD CHANGES
SIGNATURE	P.E. NUMBER	DATE

SHEET NUMBER

30

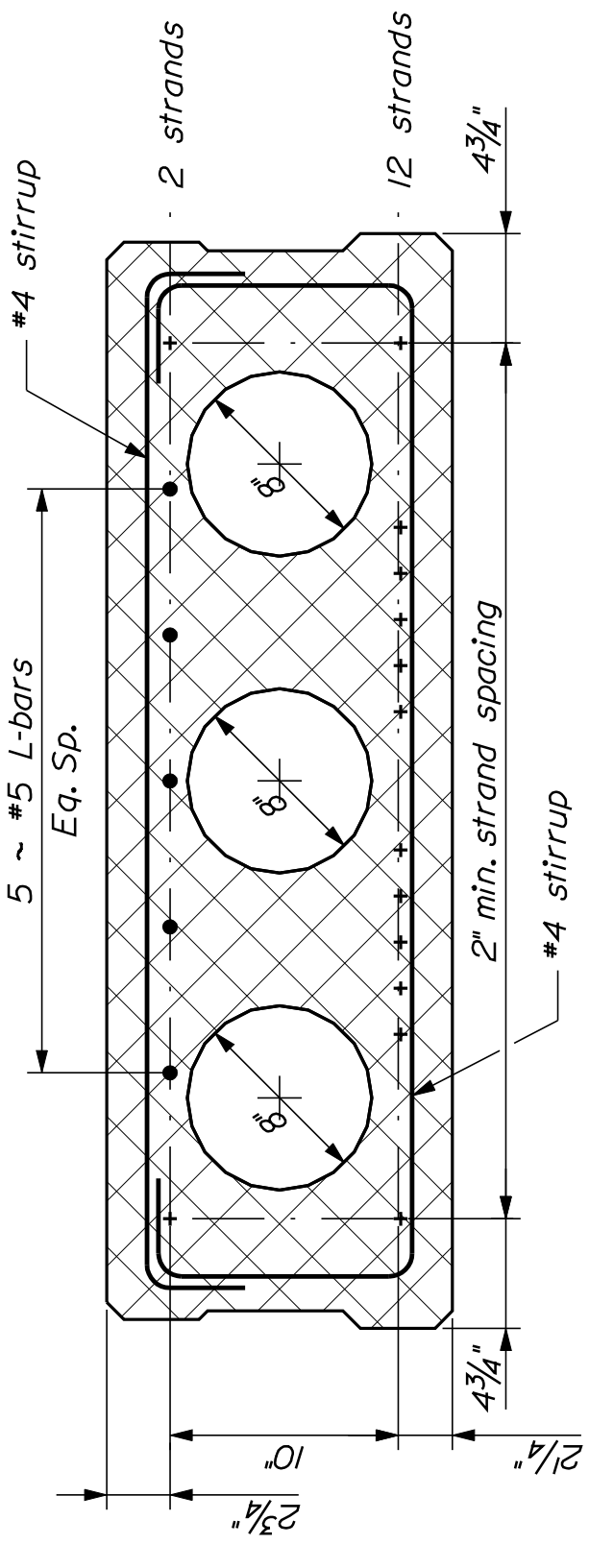
OF 38

PROJ. MANAGER	J. WENTWORTH	BY	DATE
DESIGN-DETAILER	R. NAUUS	TEAM S.	
CHECKED-REVIEWED			
DESIGNS-DETAILED			
REVISIONS 1	stand designation:	04-13-09	
REVISIONS 2			
REVISIONS 3			
REVISIONS 4			
FIELD CHANGES			

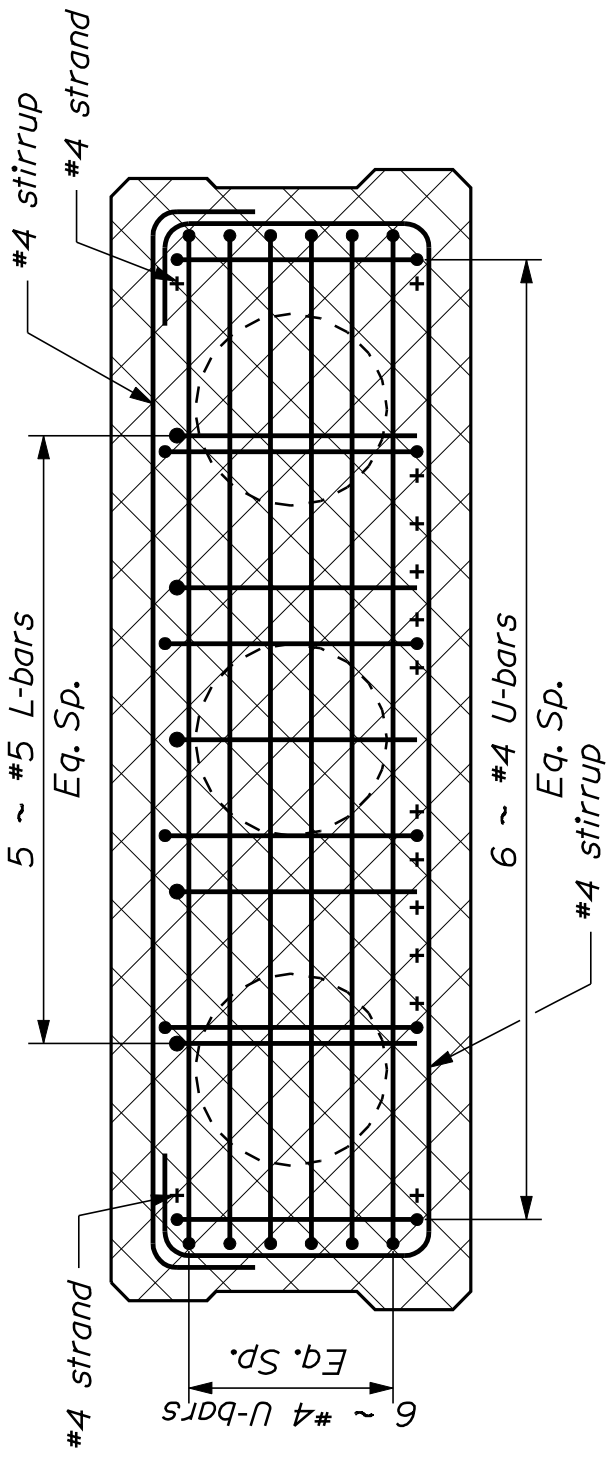


INTERIOR PRECAST VOIDED SLAB
 Strands Omitted For Clarity
 Interior Girders 3-11

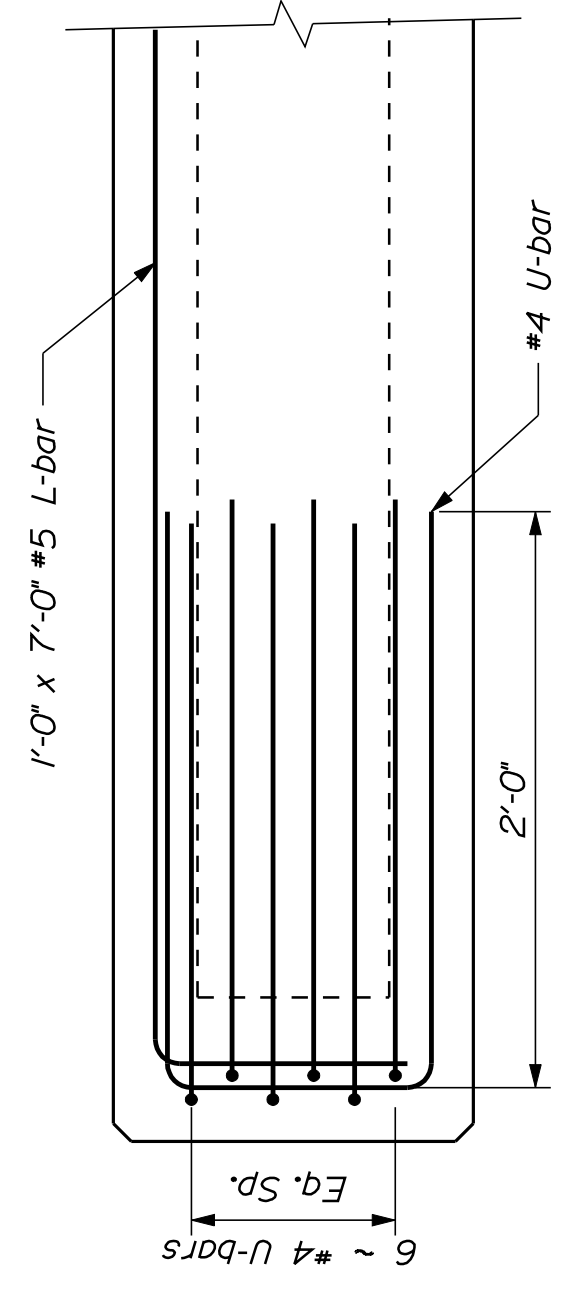
NOTE
 Concerning fanned reinforcing:
 maintain max. spacing of 6" O.C. &
 2" min. clear spacing between
 adjacent stirrups



VOIDED SLAB REINFORCEMENT @ MID SPAN
 Interior Girders 3-11



VOIDED SLAB REINFORCEMENT @ ENDS
 Interior Girders 3-11



LONGITUDINAL SECTION @ ENDS
 Interior Girders 3-11