

NOTES

TRAFFIC - Detour available via two bridges upstream

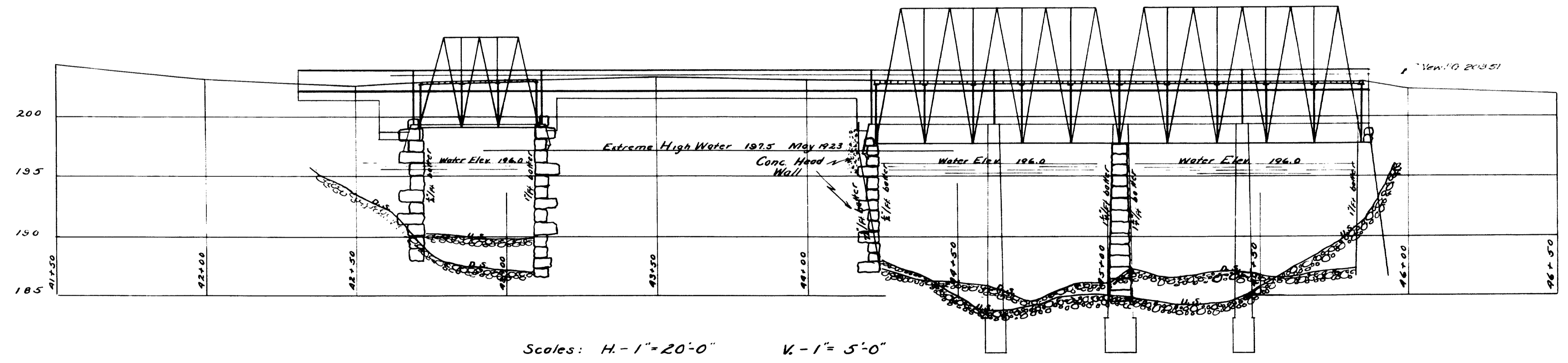
SUPERSTRUCTURE - Three steel trusses with 3' planking in fair condition and bracketed sidewalk on upstream side. Sidewalk extends along retaining wall, overhanging on needle beams.

SUBSTRUCTURE - Abut^s 1, 2, & 3 of split stone well laid in mortar - Abut^s 4 of concrete with masonry backwall - All in good condition.

STREAM - Current slow above dam may be drained.

Additional Note:
To obtain highway grades add 0.6' to grades as shown.

FOUNDATION - Stream bed of mud and stones. 2' penetration behind dam; 4' penetration thru soft clay of racks of canal.

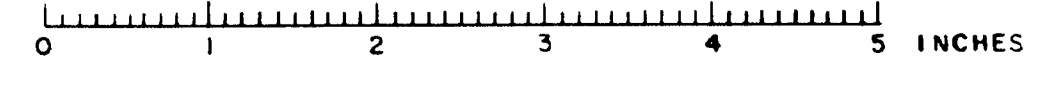


Scales: H. - 1" = 20'-0" V. - 1" = 5'-0"

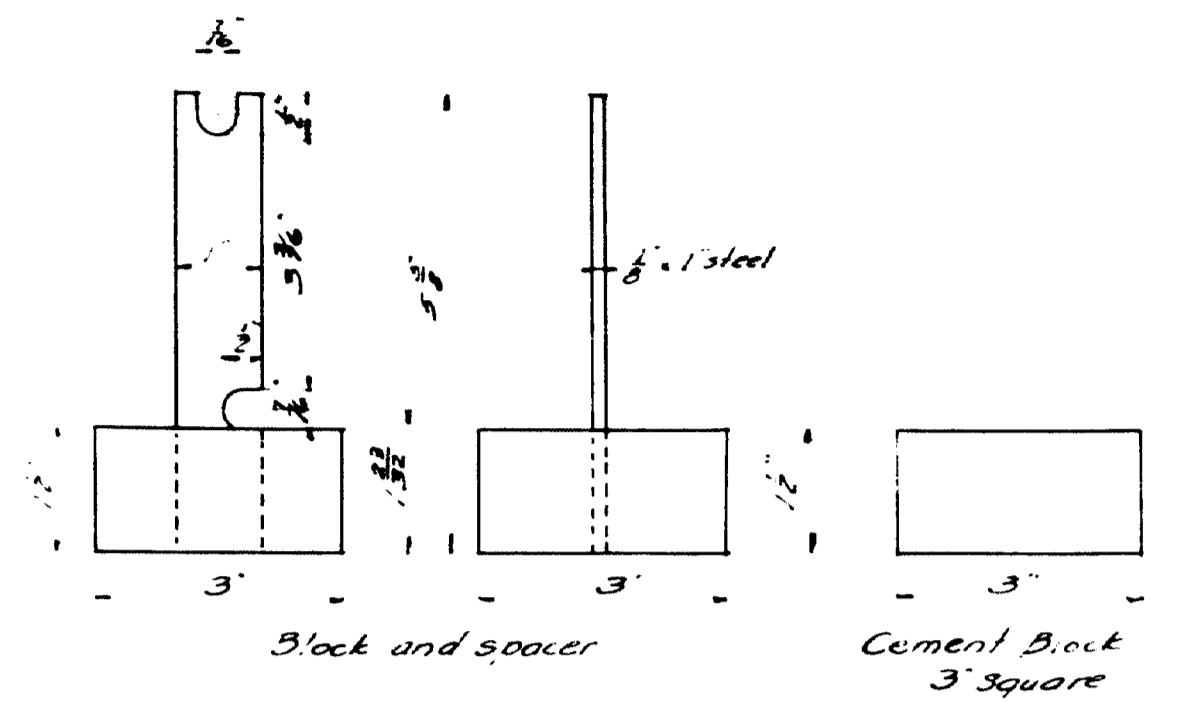
Note: All elevations on this plan and on bridge details are original grades.

MAINE HIGHWAY COMMISSION
BRIDGE DIVISION
MAIN ST. BRIDGE
OVER
E. BR. SEBASTICOOK RIVER
IN THE TOWN OF
NEWPORT, PENOBSCOT CO.
SURVEY PLAN
Sheet 1 of 2 Augusta, Me. May 2, 1923

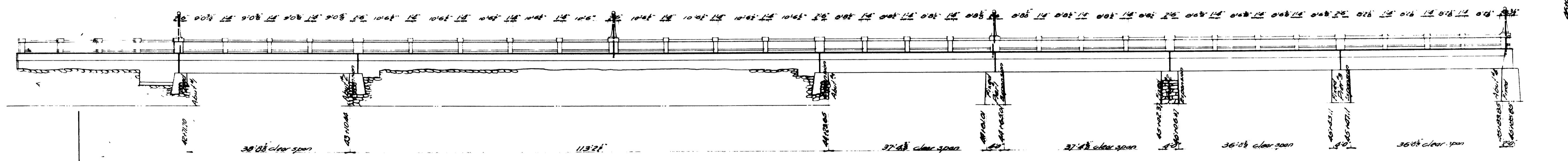
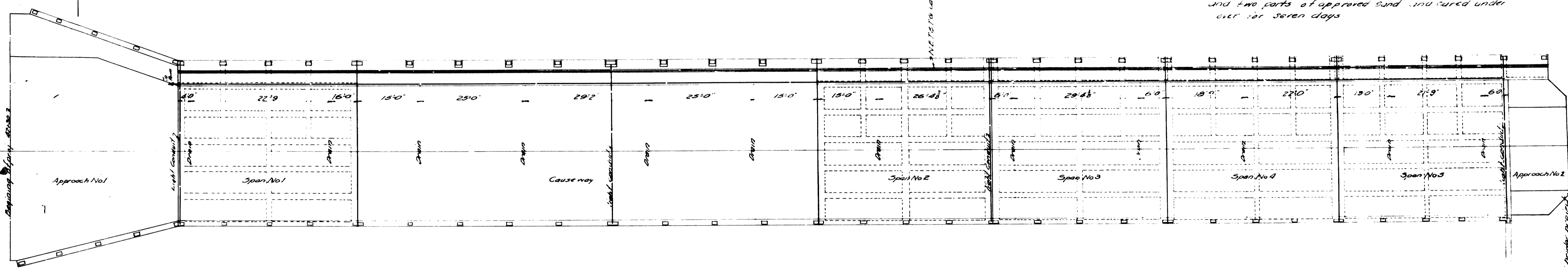
11-104



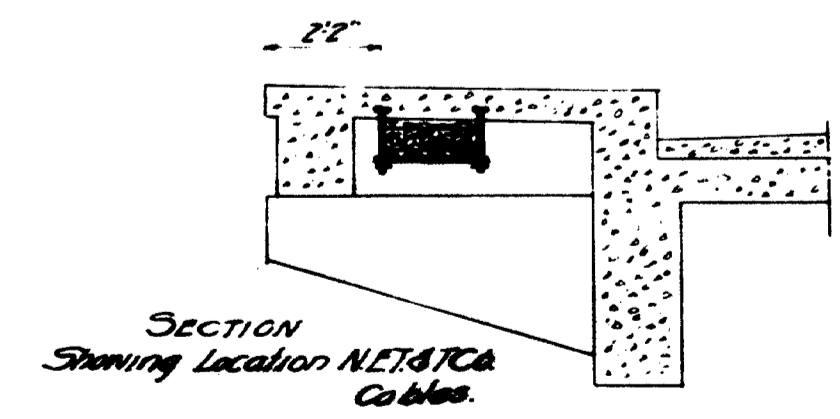
Survey - Bevilacqua
Planned - J. C. Camp



Blocks to be made of one part port-land cement and two parts of approved sand, and cured under air for seven days.

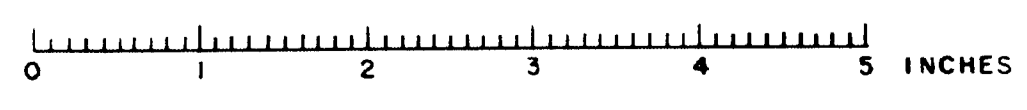


CONDUIT NOTE
 Bends in conduit pipe shall be made as follows:
 Fill pipe with sand and compact the sand by tapping one end of the pipe on the ground. Heat the pipe in a forge and bend while hot. The sand must be thoroughly dry before being placed in pipe. All burrs on pipe shall be removed by reaming or filing. All conduit pipe to be 1 1/2\"/>

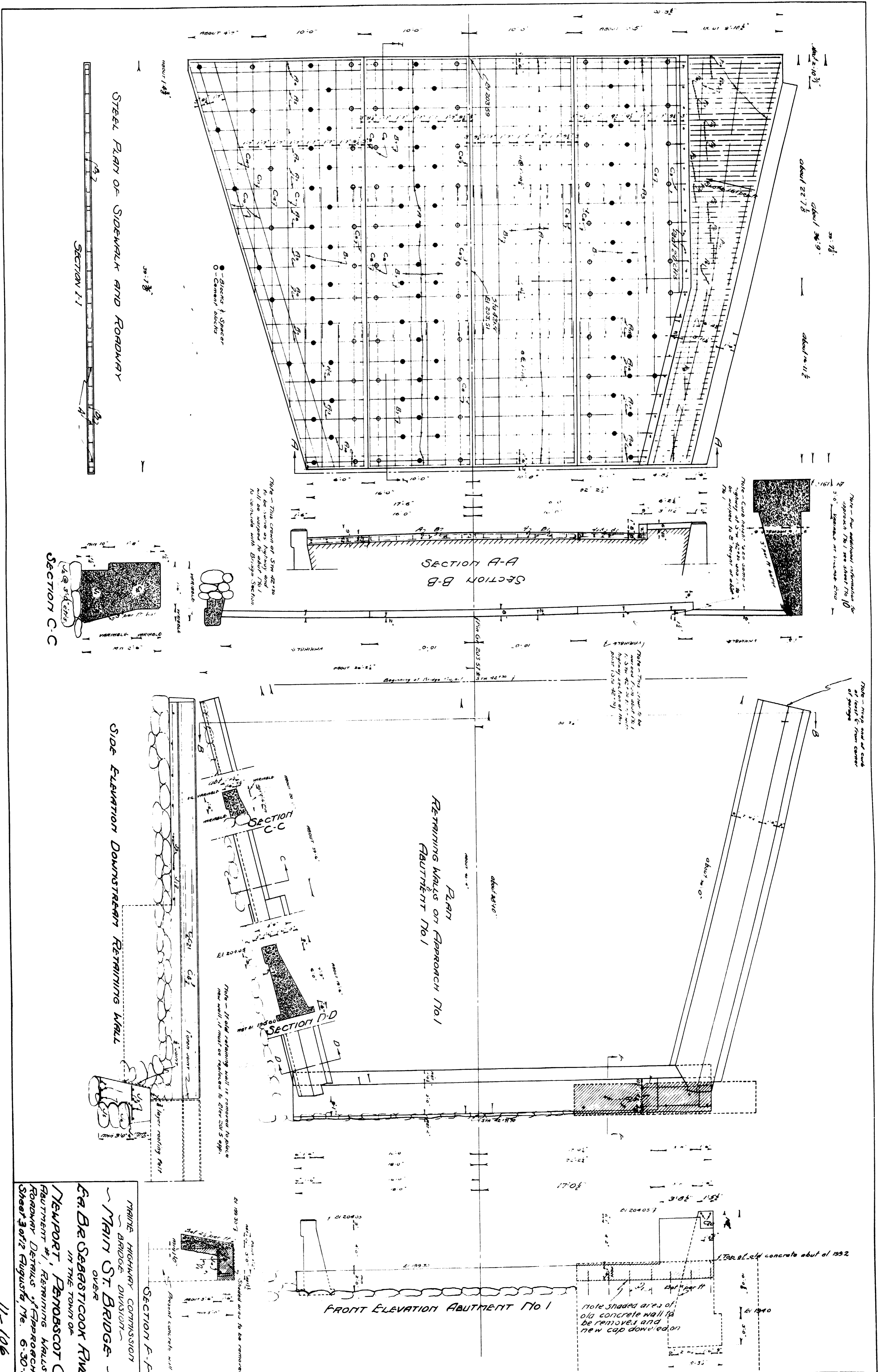


MAINE HIGHWAY COMMISSION
 BRIDGE DIVISION
MAIN ST. BRIDGE
 OVER
 EAST BRANCH OF SEBASTICOOK RIVER
 IN THE TOWN OF
NEWPORT, PENOBSCOT CO.
GENERAL LAYOUT PLAN
 SHEET 2 OF 2 AUGUSTA, ME. JUNE 27 '30

Place, draw and
 Engineer, *Shawmut*



DESIGNED BY - BRADFORD
 TRACED BY - THESTER
 CHECKED BY - HAMILTON

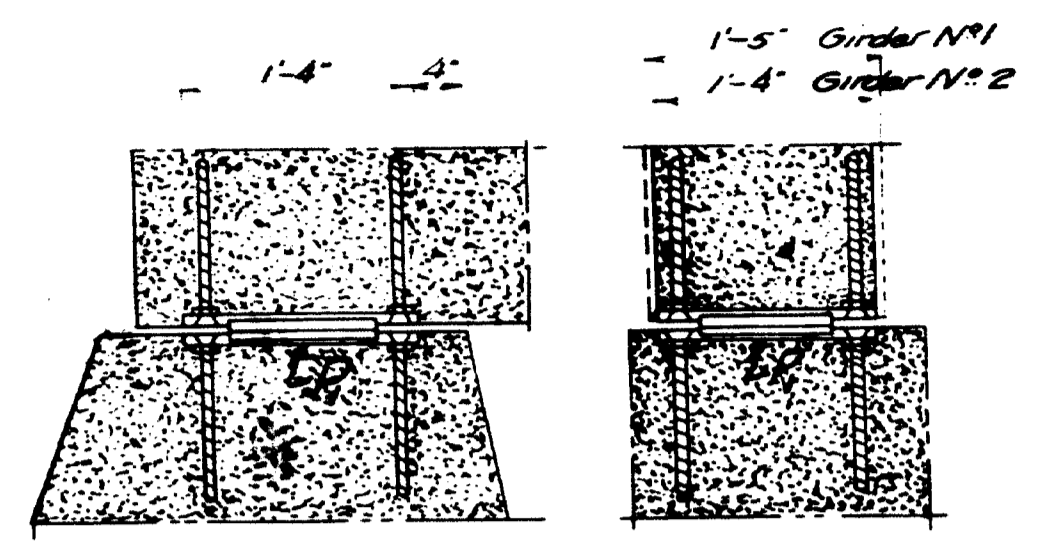
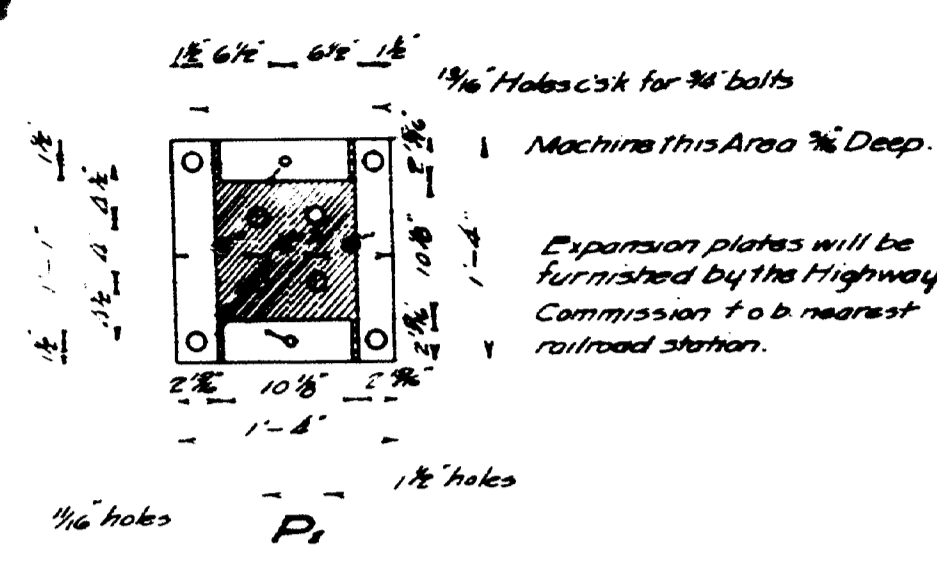
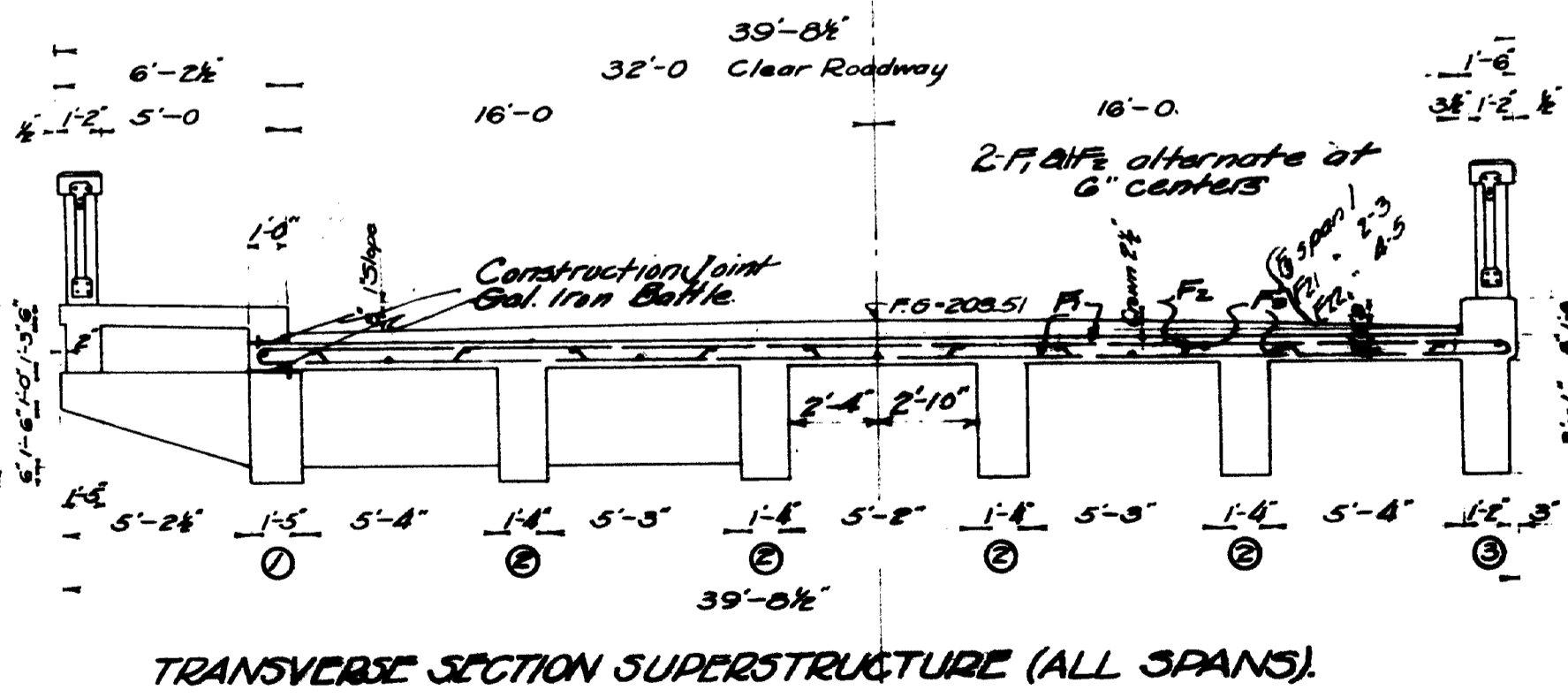
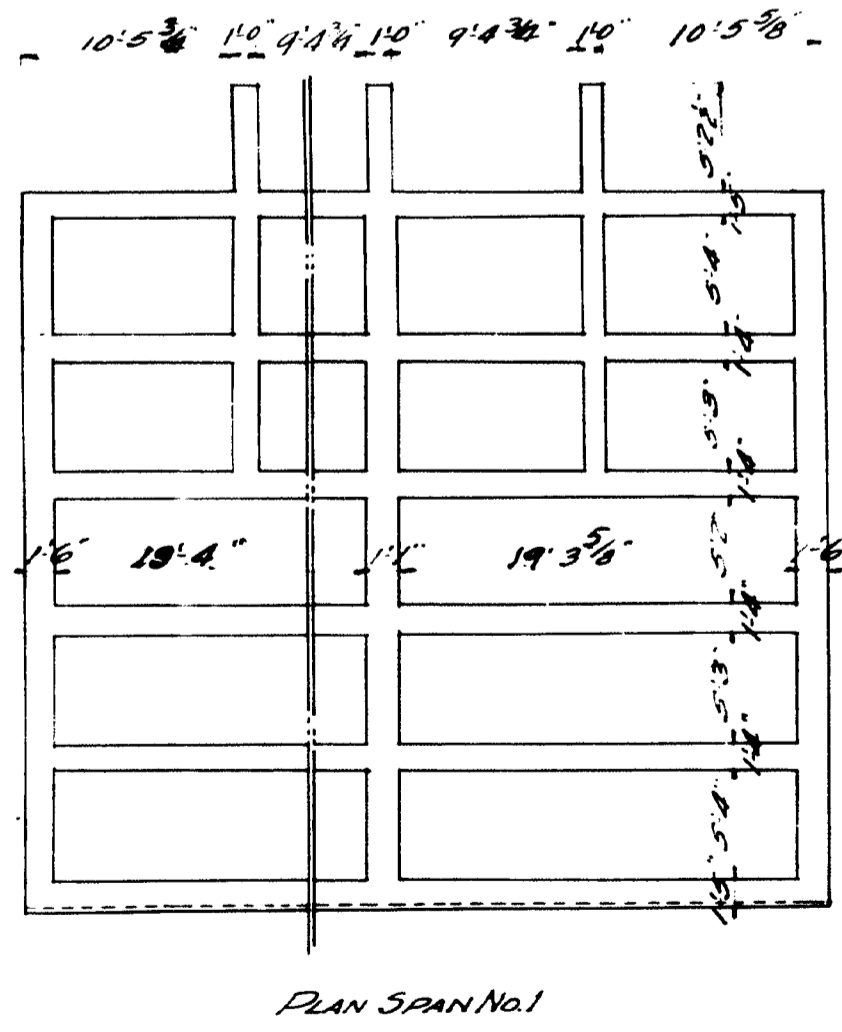
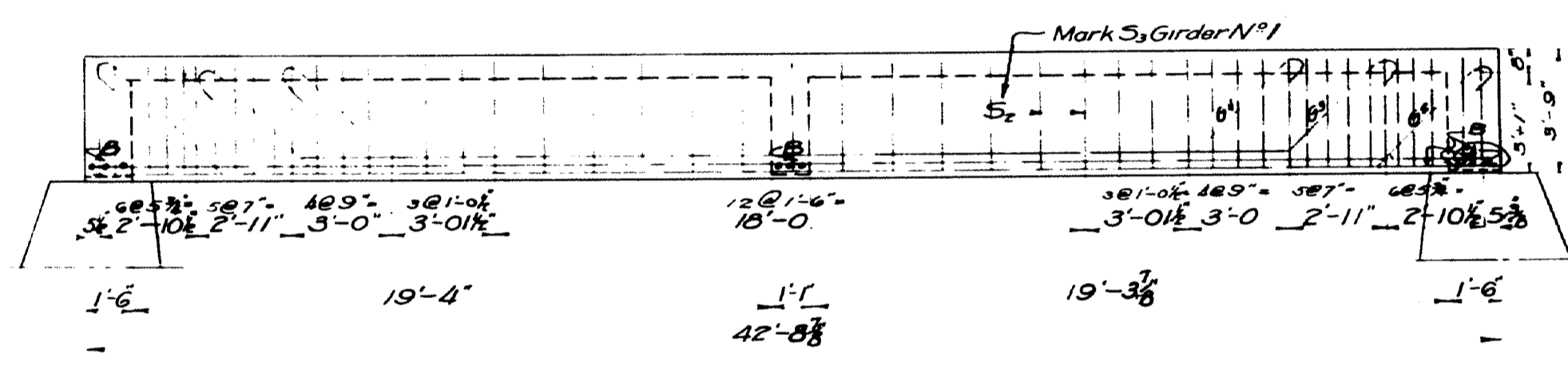
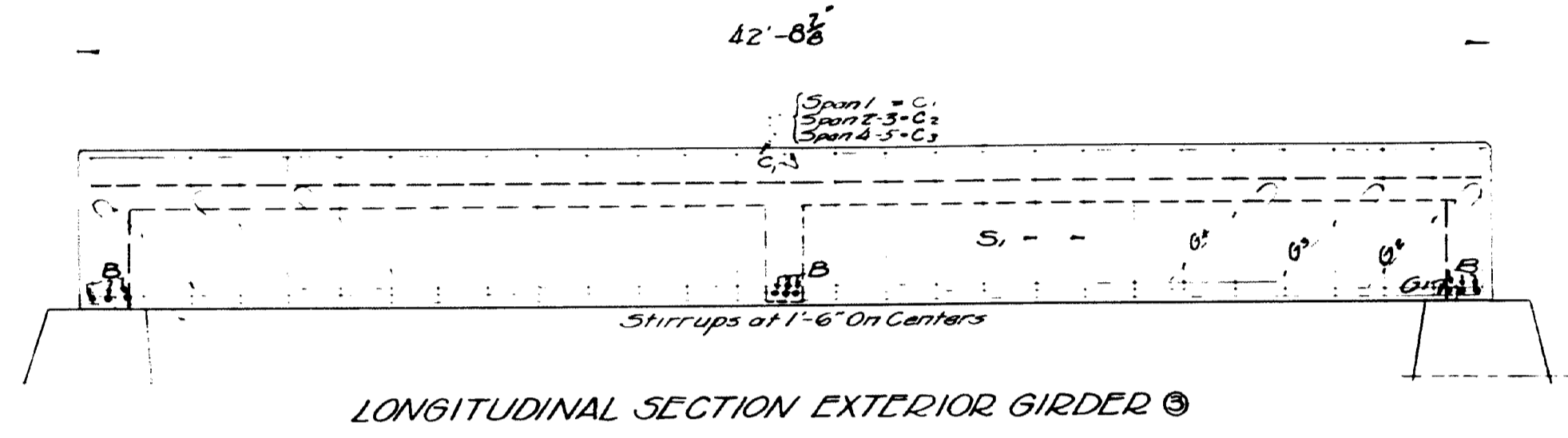
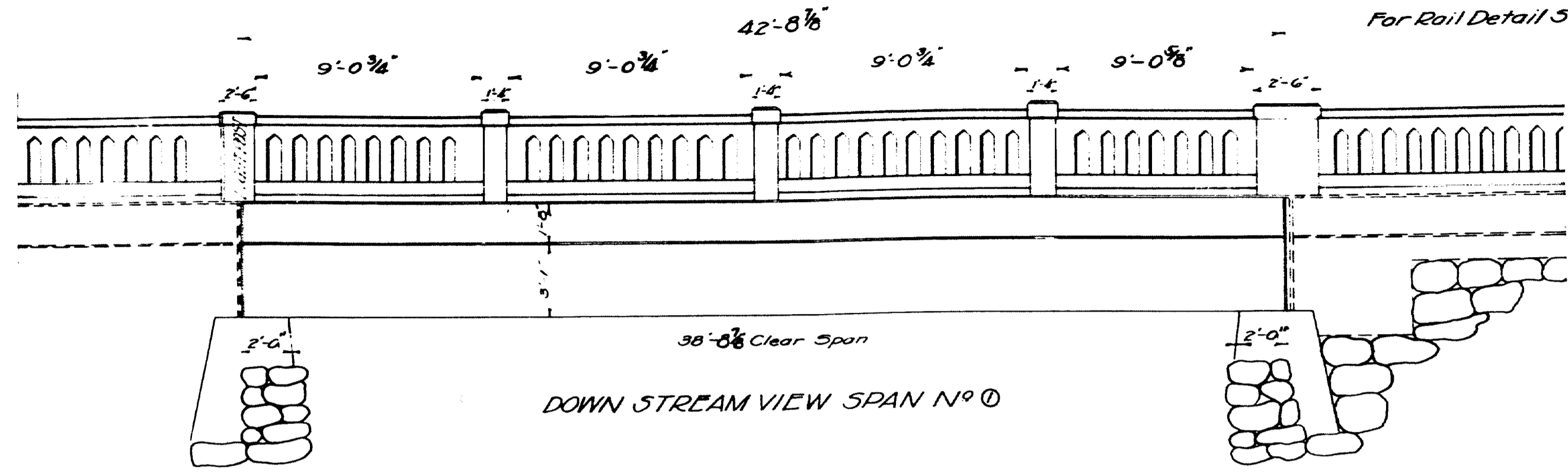


0 1 2 3 4 5 INCHES

MAINE HIGHWAY COMMISSION
 TRAIL ST. BRIDGE
 OVER
 FA. DR. SEBASTIEN RIVER
 IN THE TOWN OF
 NEWPORT, PENOBSCOT CO.
 REINFORCING WALLS &
 ROADWAY DETAILS OF APPROACH No. 1
 Sheet 3 of 12 August, Me. 6.30.30.

11-106

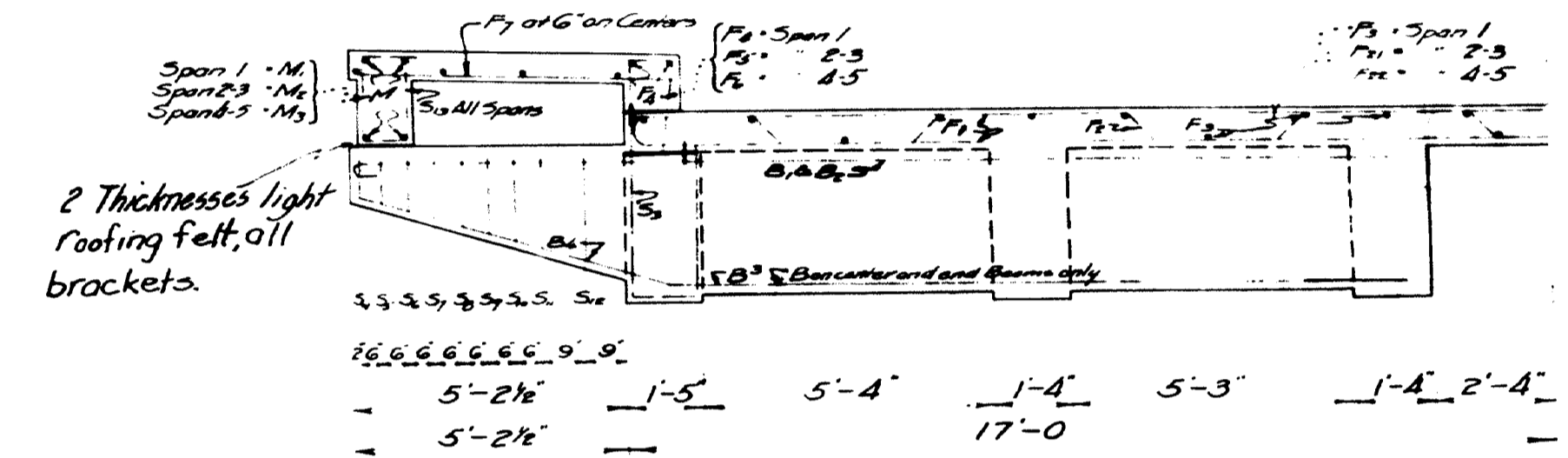
For Rail Detail See Sheet No 10



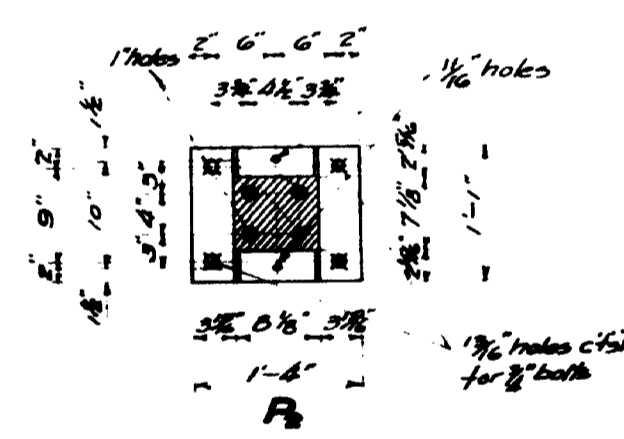
EXPANSION BEARING DETAIL

NOTE FOR P₁ AND P₂
Grooves in steel plate to be cut 3/4\"/>

REQUIRED:
25 Steel Plates (P₁) 16\"/>

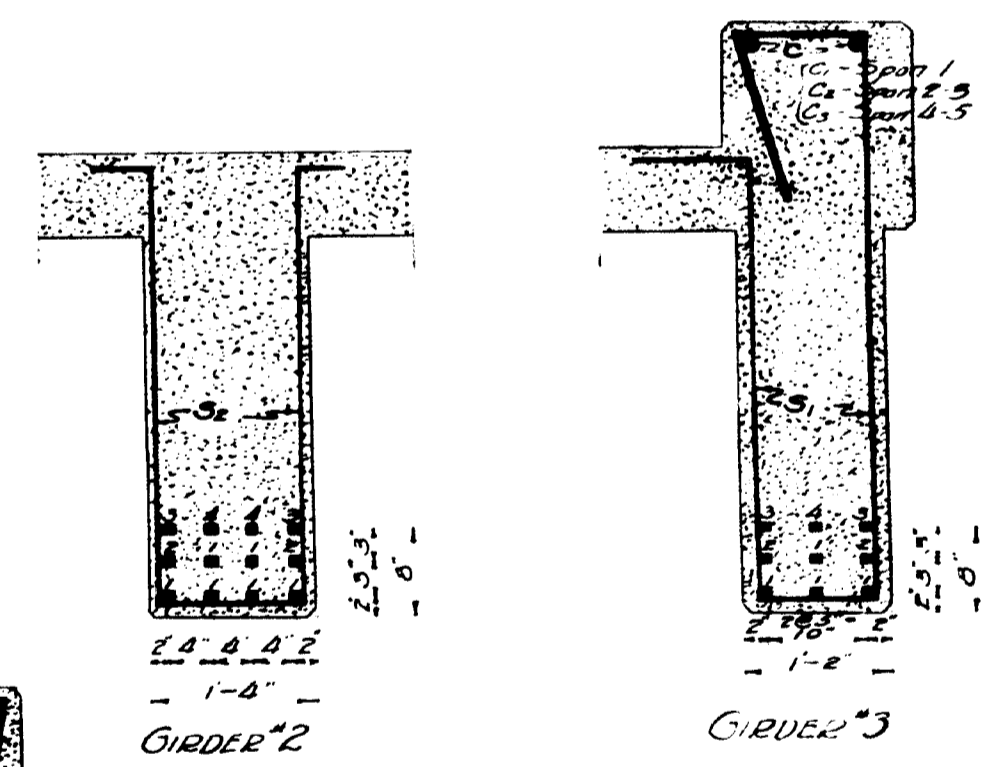


GIRDER NO 3



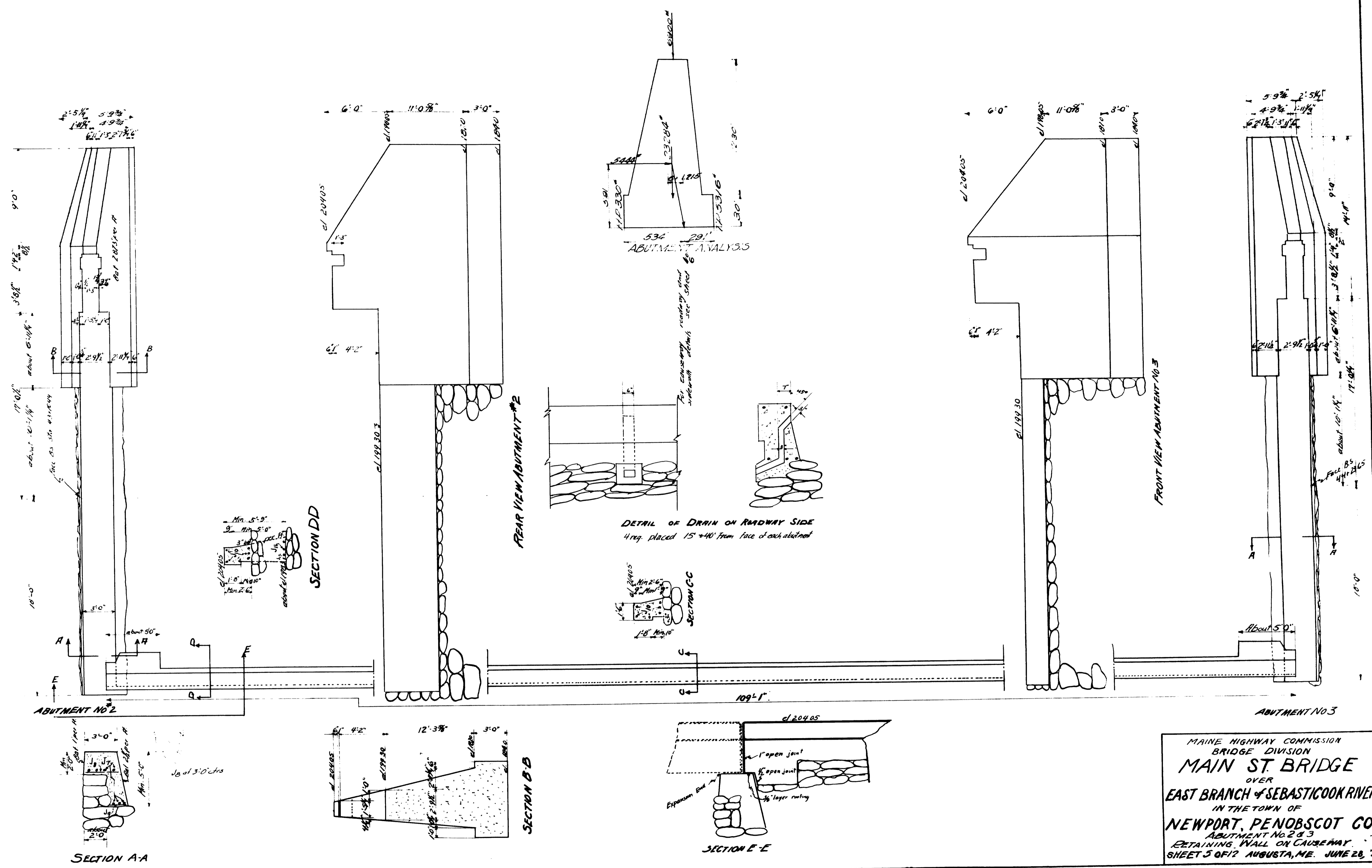
Note:
All exposed edges of concrete to be chamfered 1/4\"/>

Marking of Girder Steel for Spans		
Span 1	Span 2-3	Span 4-5
G ₁	G ₅	G ₉
G ₂	G ₆	G ₁₀
G ₃	G ₇	G ₁₁
G ₄	G ₈	G ₁₂

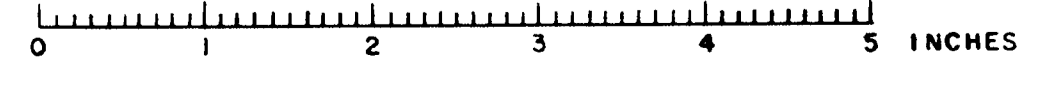


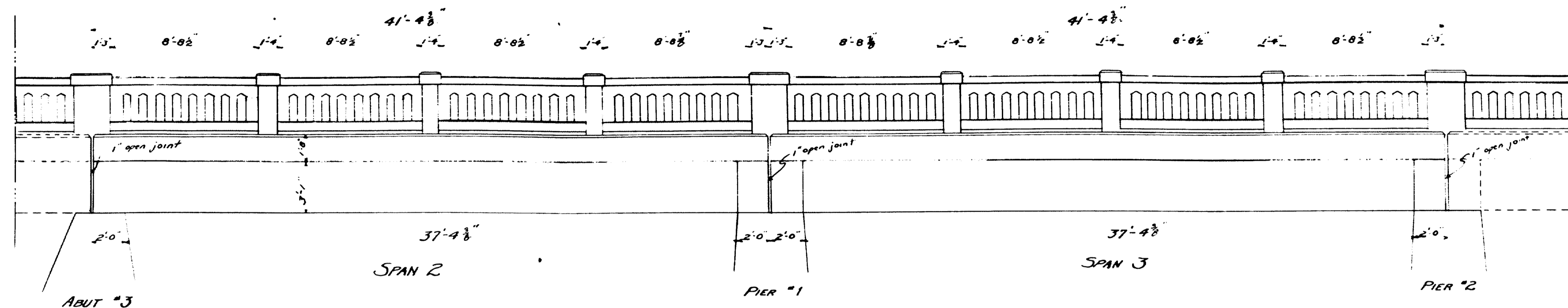
MAINE HIGHWAY COMMISSION
BRIDGE DIVISION
MAIN ST. BRIDGE
OVER
E. BR. SEBASTICOOK RIVER
IN THE TOWN OF
NEWPORT, PENOBSCOT CO.
SUPERSTRUCTURE DETAILS, SPAN 1
Sheet No 12 Augusta, Me. June 27, 1930

Plan Showing
Location of
Structure

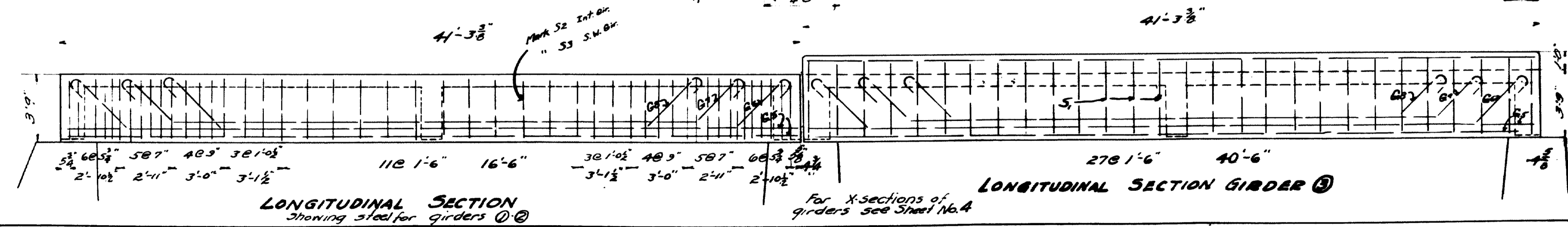
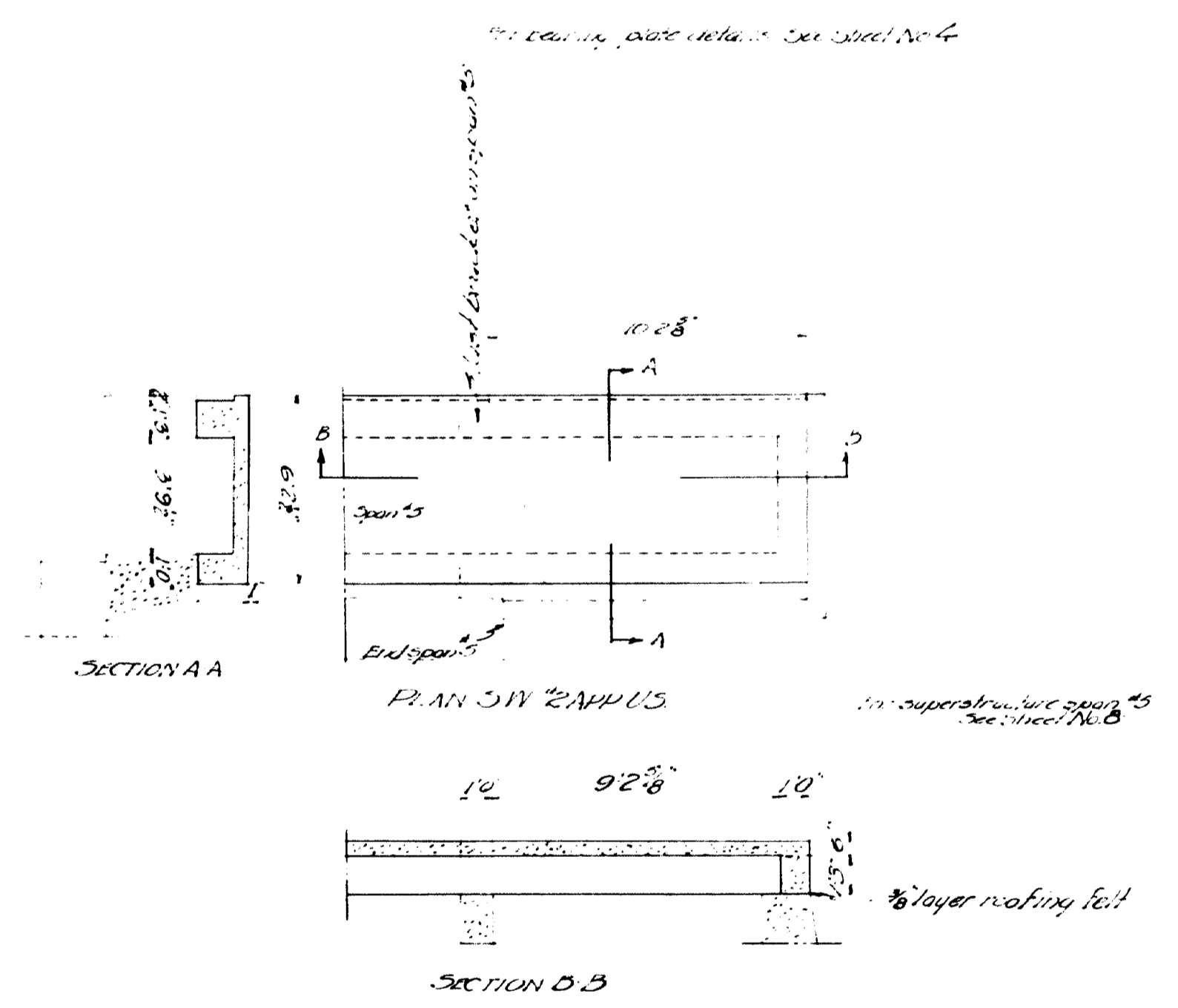
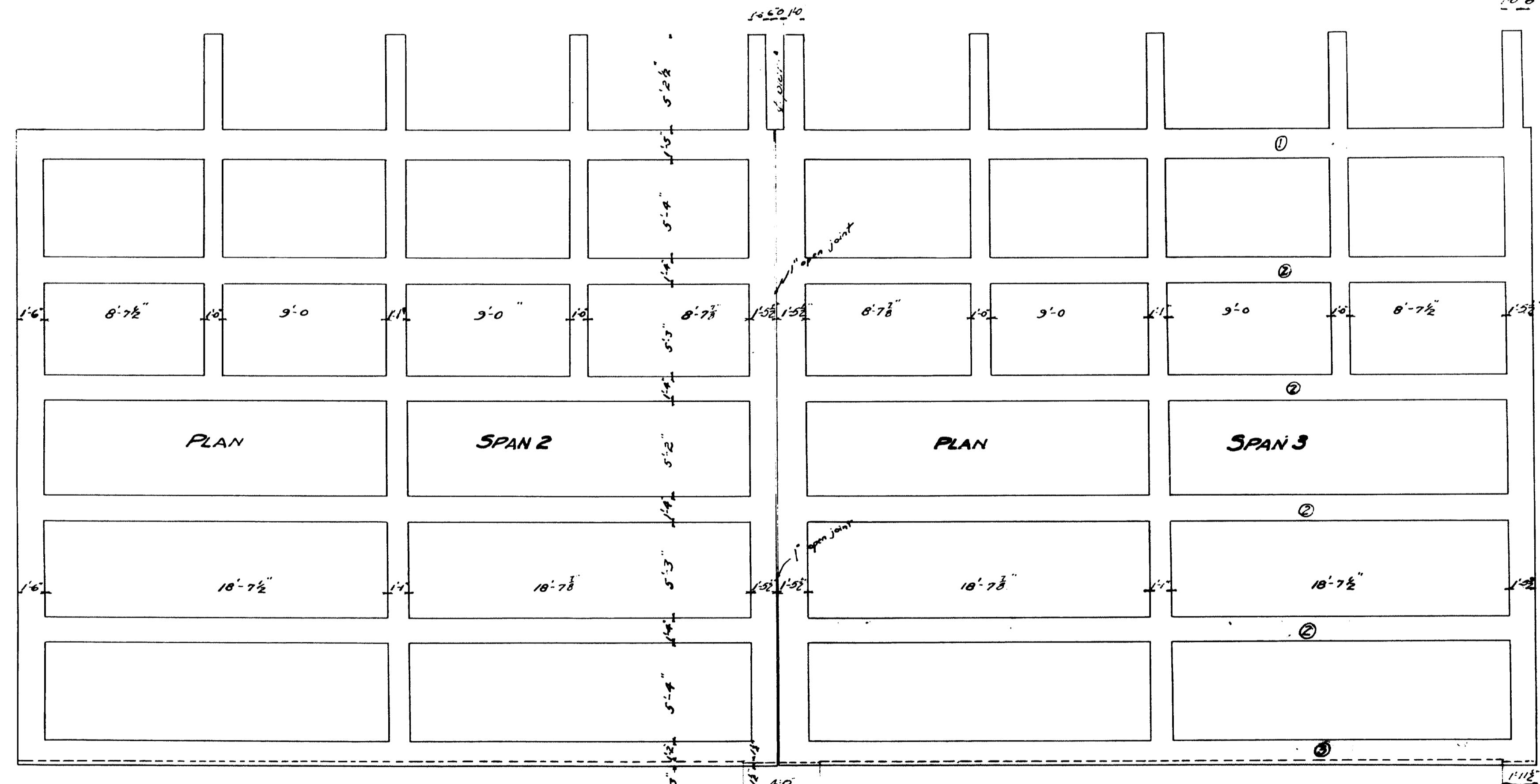


MAINE HIGHWAY COMMISSION
 BRIDGE DIVISION
MAIN ST. BRIDGE
 OVER
 EAST BRANCH OF SEBASTICOOK RIVER
 IN THE TOWN OF
NEWPORT, PENOBSCOT CO.
 ABUTMENT NO. 2 & 3
 RETAINING WALL ON CAUSEWAY
 SHEET 5 OF 7 AUGUSTA, ME. JUNE 28, 1918



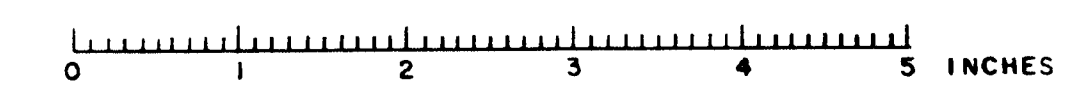


NOTE
 Cover the 2" opening between superstructure and substructure, on the backsides, with two thicknesses of heavy roofing felt. Coat concrete and backsides of each layer of felt, as applied, with hot tar or asphalt. The area to be covered by the felt is to be recessed 1/2" by nailing thin strips to the forms before the concrete is placed.
 All exposed edges of concrete to be chamfered 1/2" unless otherwise noted.



DESIGNED - W.H.B.
 CHECKED - J.C.
 DRAWN - J.C.

STATE HIGHWAY COMMISSION
 BRIDGE DIVISION
MAIN STREET BRIDGE
 OVER
 EAST BRANCH OF SEBASTICOOK RIVER
 IN THE TOWN OF
 NEWPORT - PENOBSCOT COUNTY
 SUPERSTRUCTURE DETAILS - SPANS 2 & 3
 Sheet 7 of 12 AUGUSTA, ME. JUNE 28, 1930

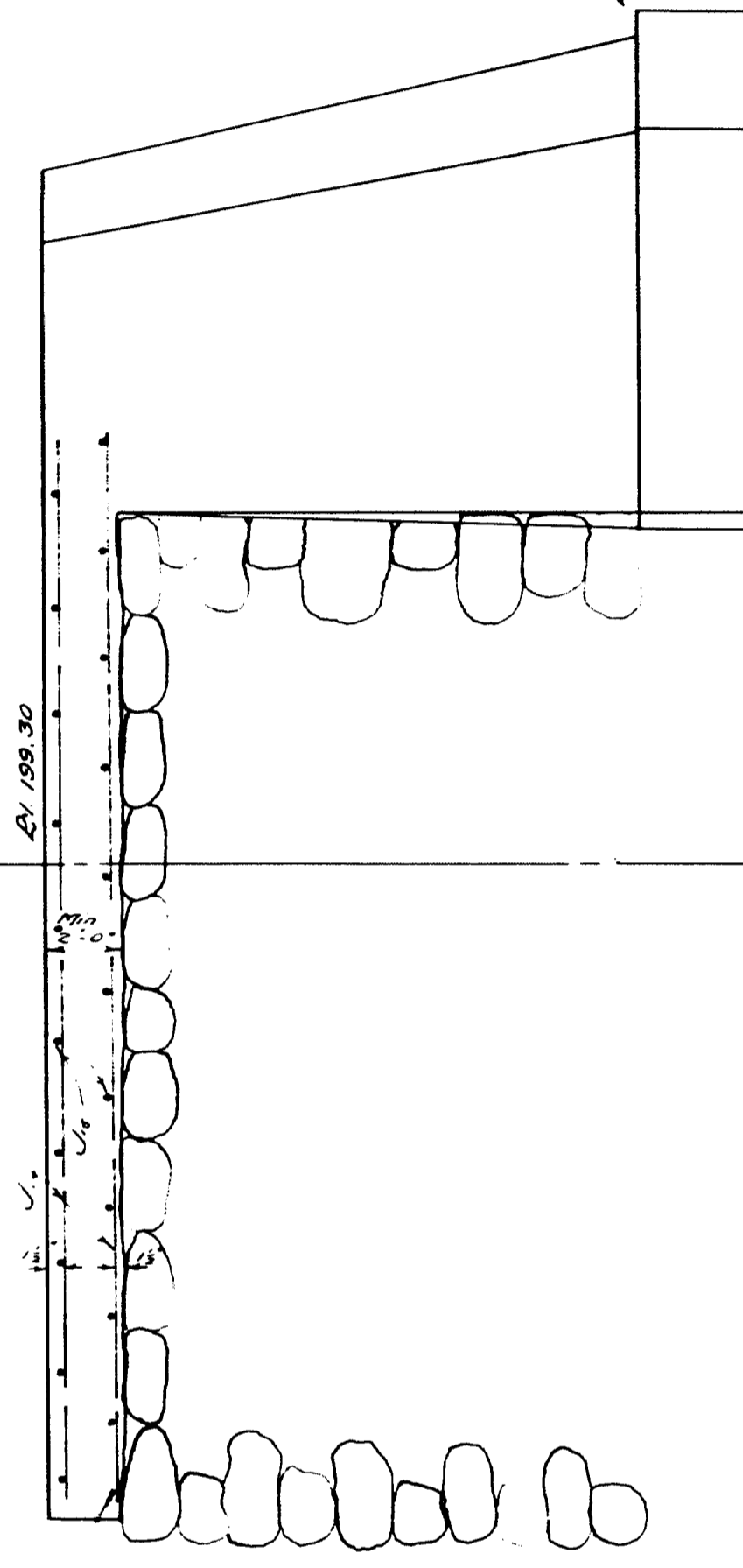
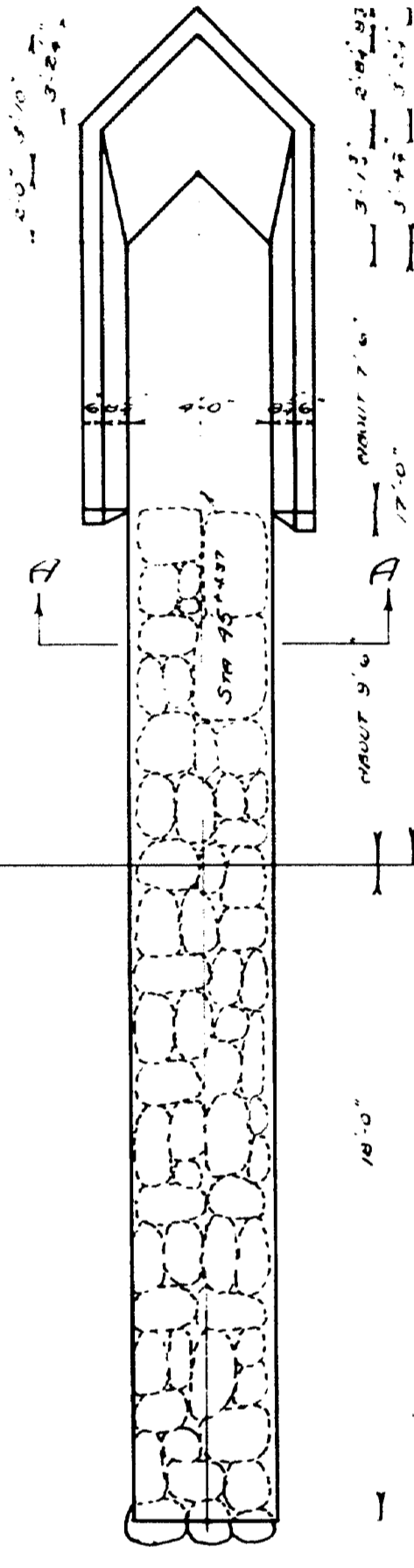
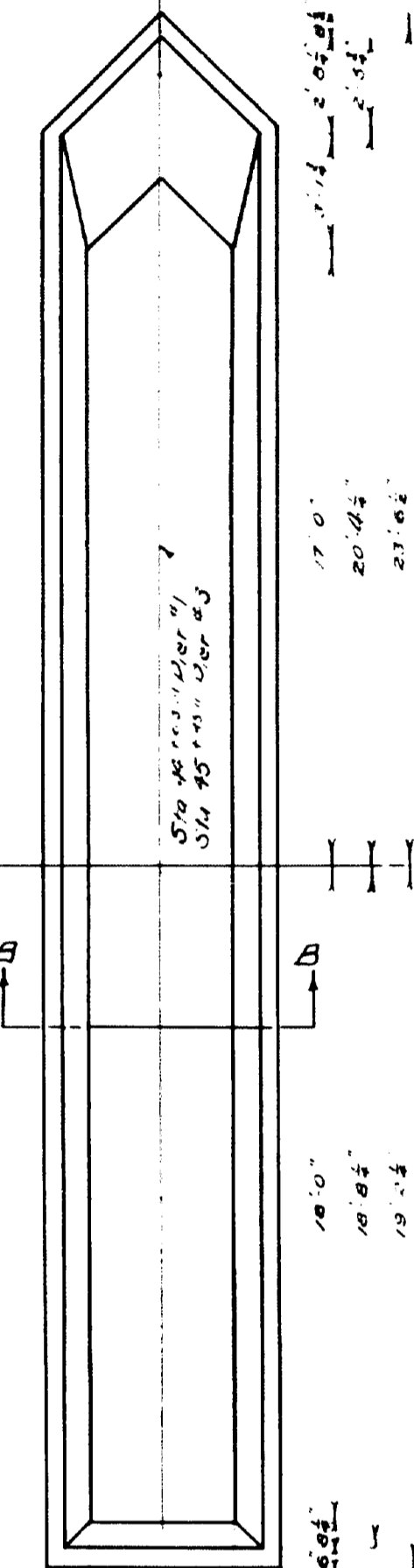
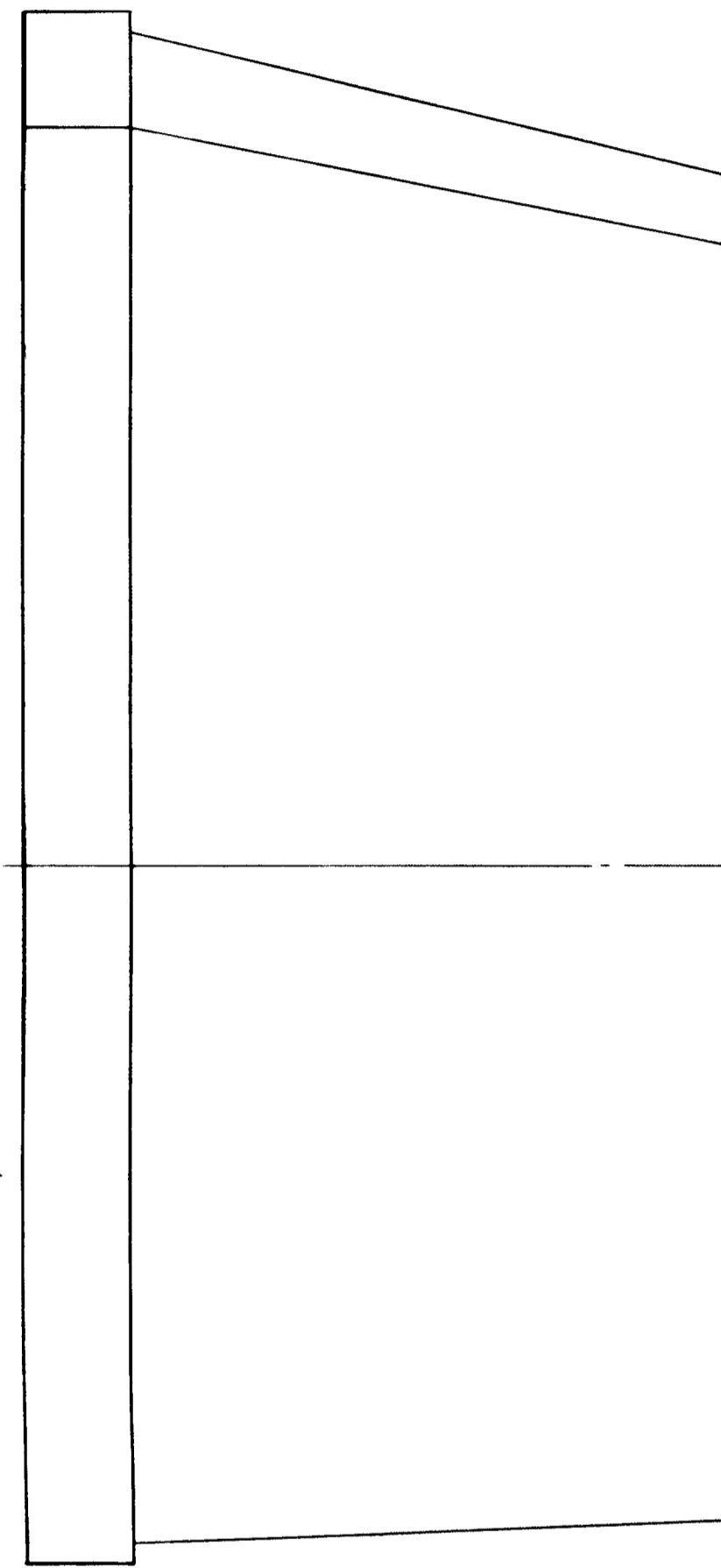


Designed by - Greenwood
 Traced by - Thompson
 Checked by - ...

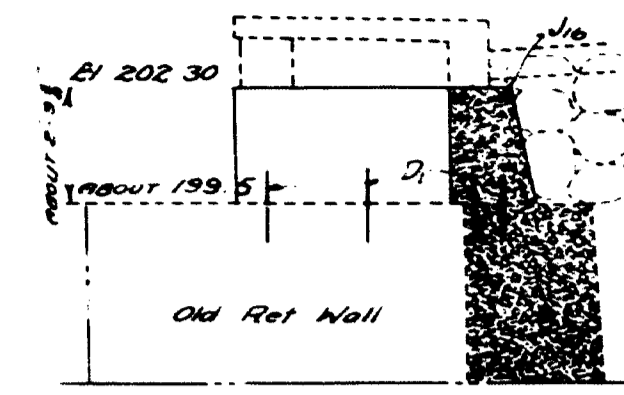
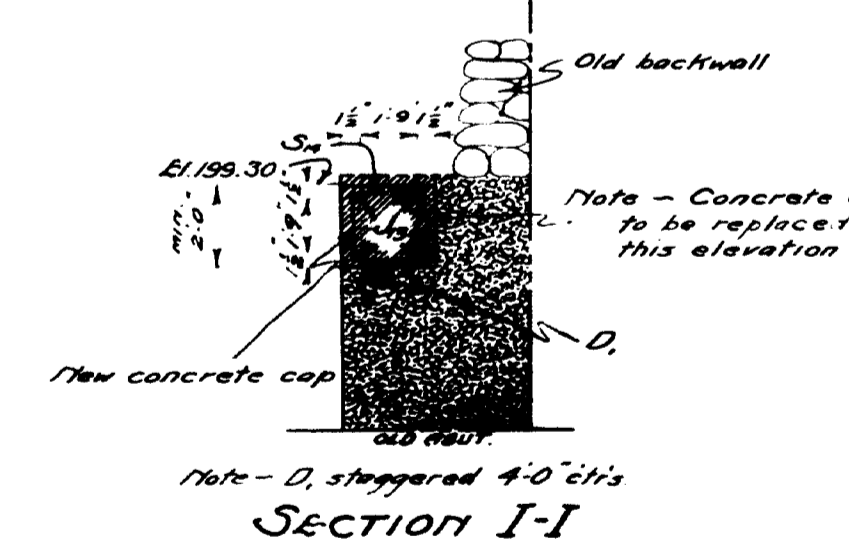
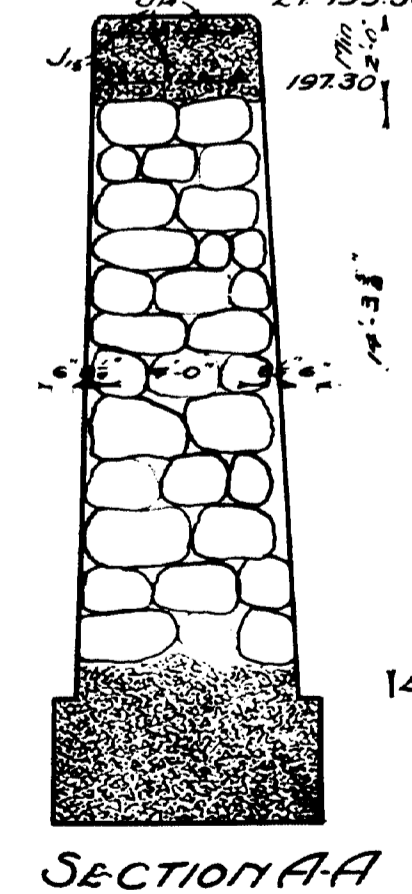
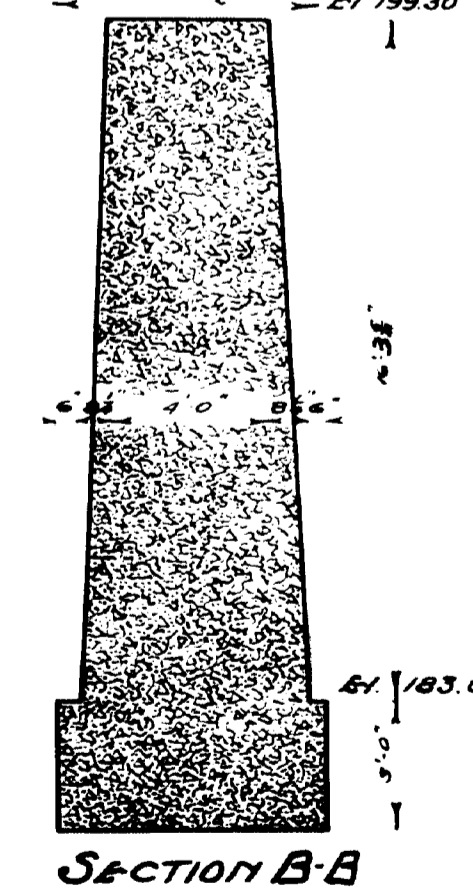
SIDE ELEVATION PIERS #1-3

PLAN
PIERS No 1-3

PLAN
PIER No 2



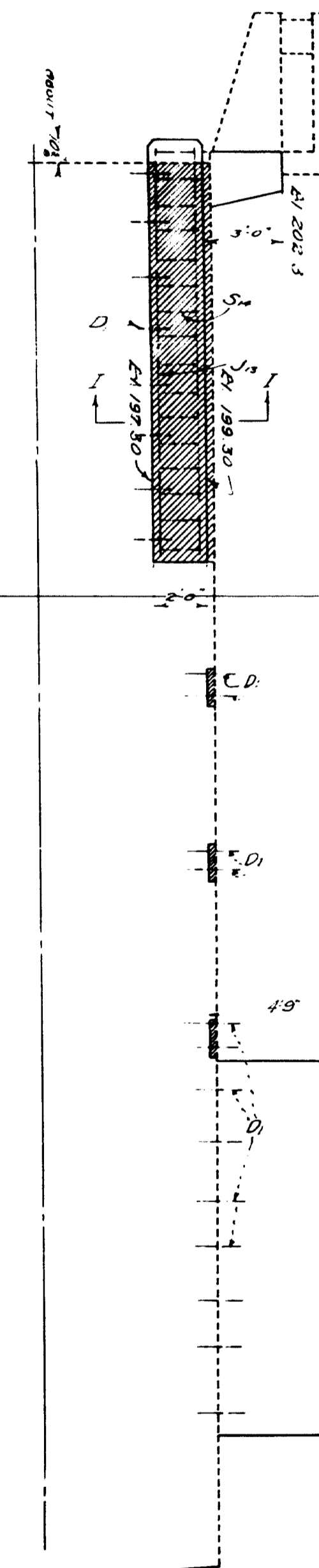
SIDE ELEVATION PIER No. 2



SECTION A-A

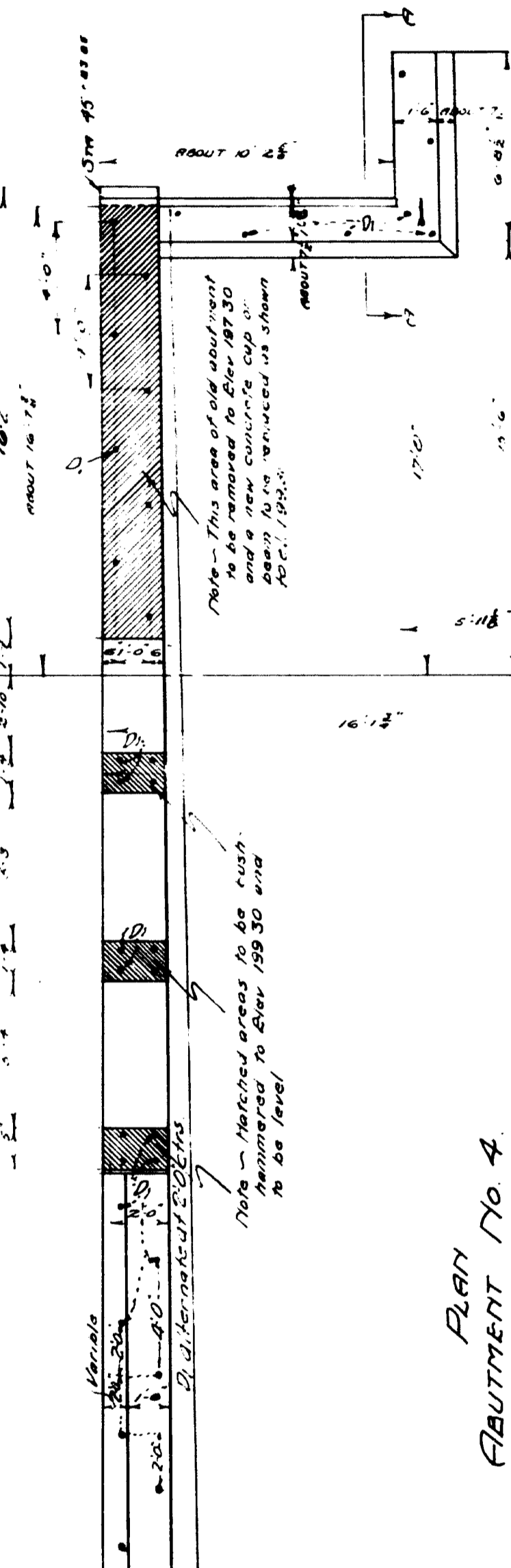
Note - This old wall to be removed so that new wall may be built

FRONT ELEVATION ABUTMENT No 4

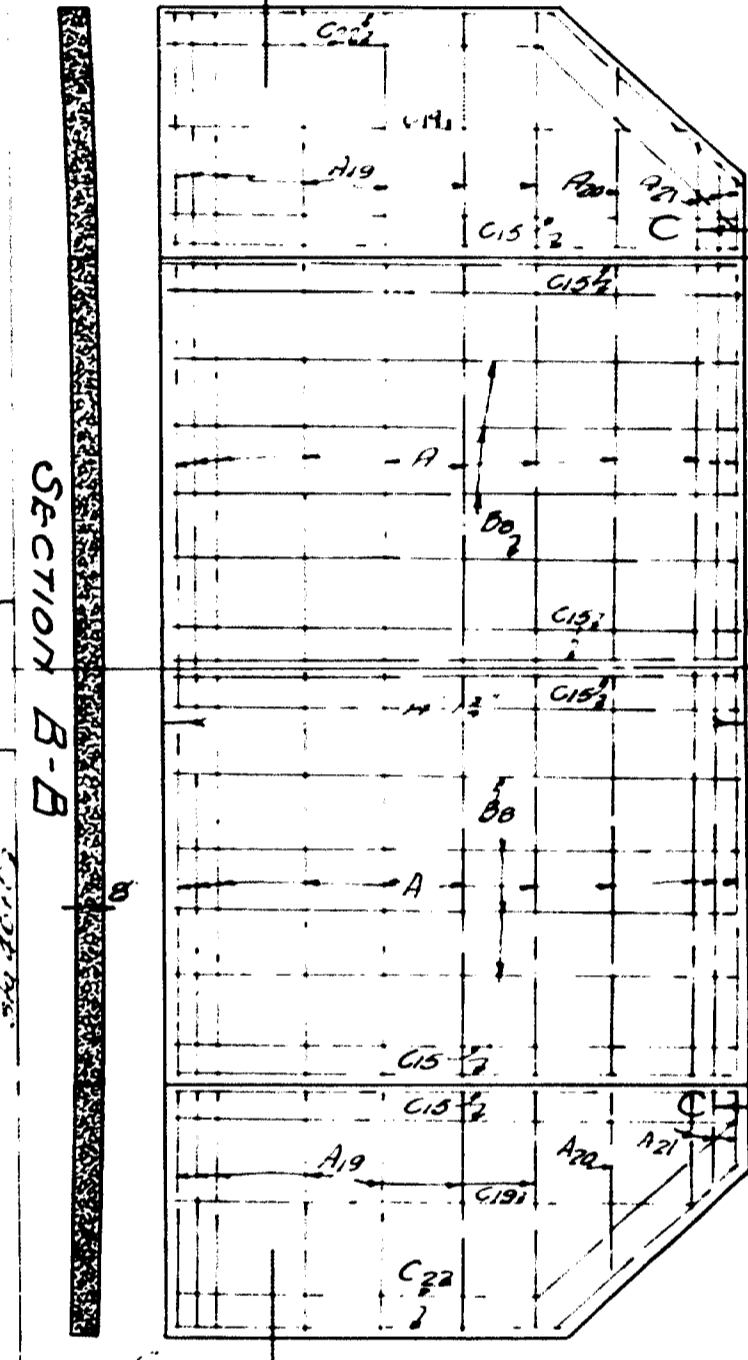


Note - Make front batter so that it will coincide with present ret wall

Note - See sheet # 11 for rail detail.



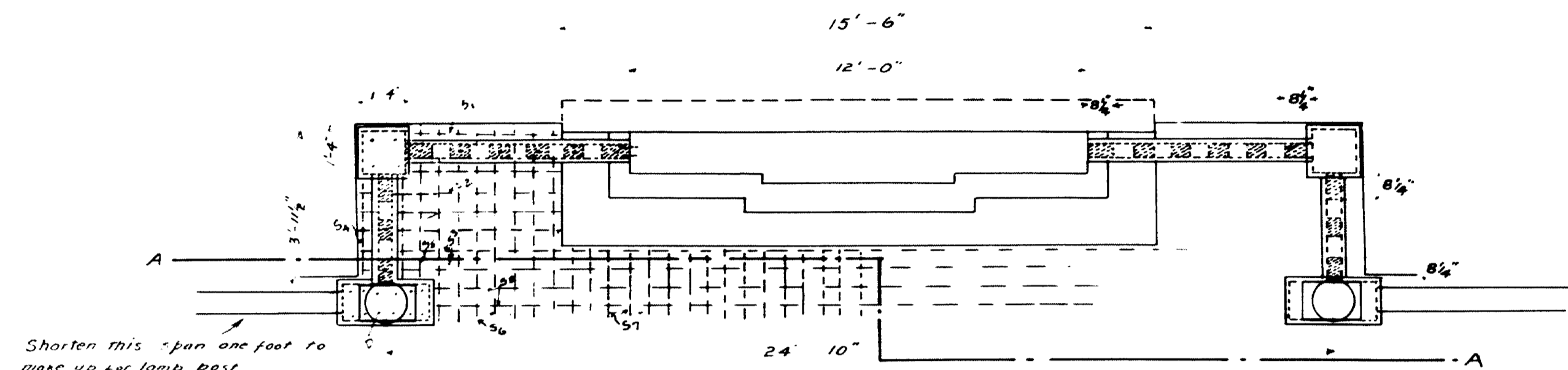
PLAN No 4



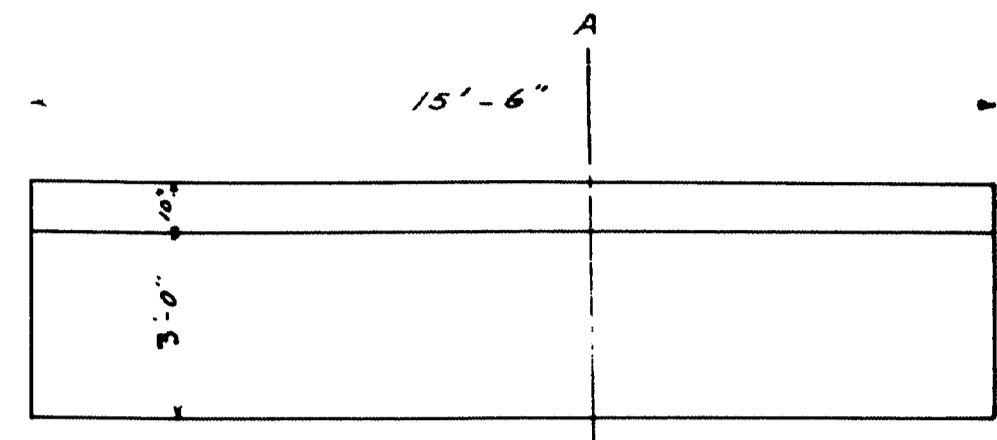
SECTION B-B

SECTION C-C

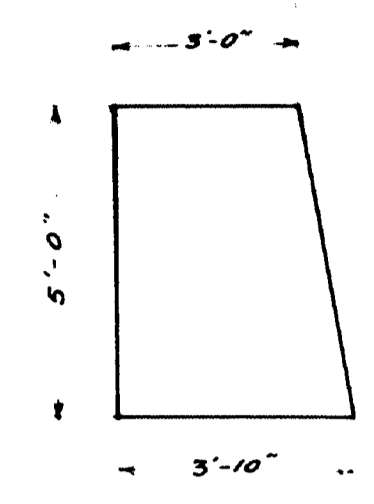
MAINE HIGHWAY COMMISSION
 - BRIDGE DIVISION -
MAIN ST. BRIDGE
 OVER
E.A. BR. SEBASTICOOK RIV.
 IN THE TOWN OF
NEWPORT, PENOBSCOT CO.
DETAILS, PIERS 1, 2, 3 & ABUT. 4
 Sheet 9 of 12 August, 1906. 6-27-30.



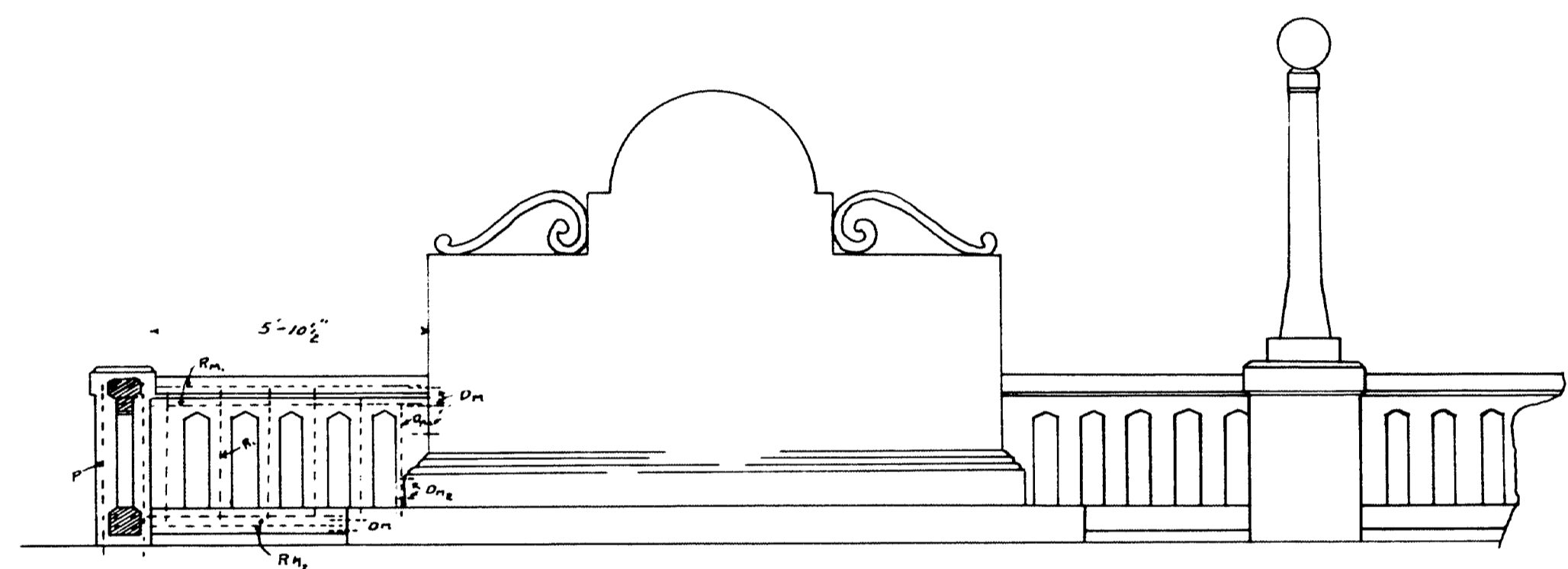
Shorten this span one foot to make up for lamp post



Plan Monument Foundation



Section A-A



SECTION A-A

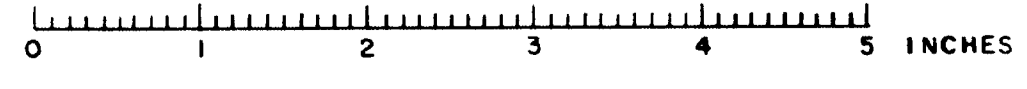
SCALE $\frac{3}{8}'' = 1'$
For Detail of Posts & Rail See Sheets 6 & 11

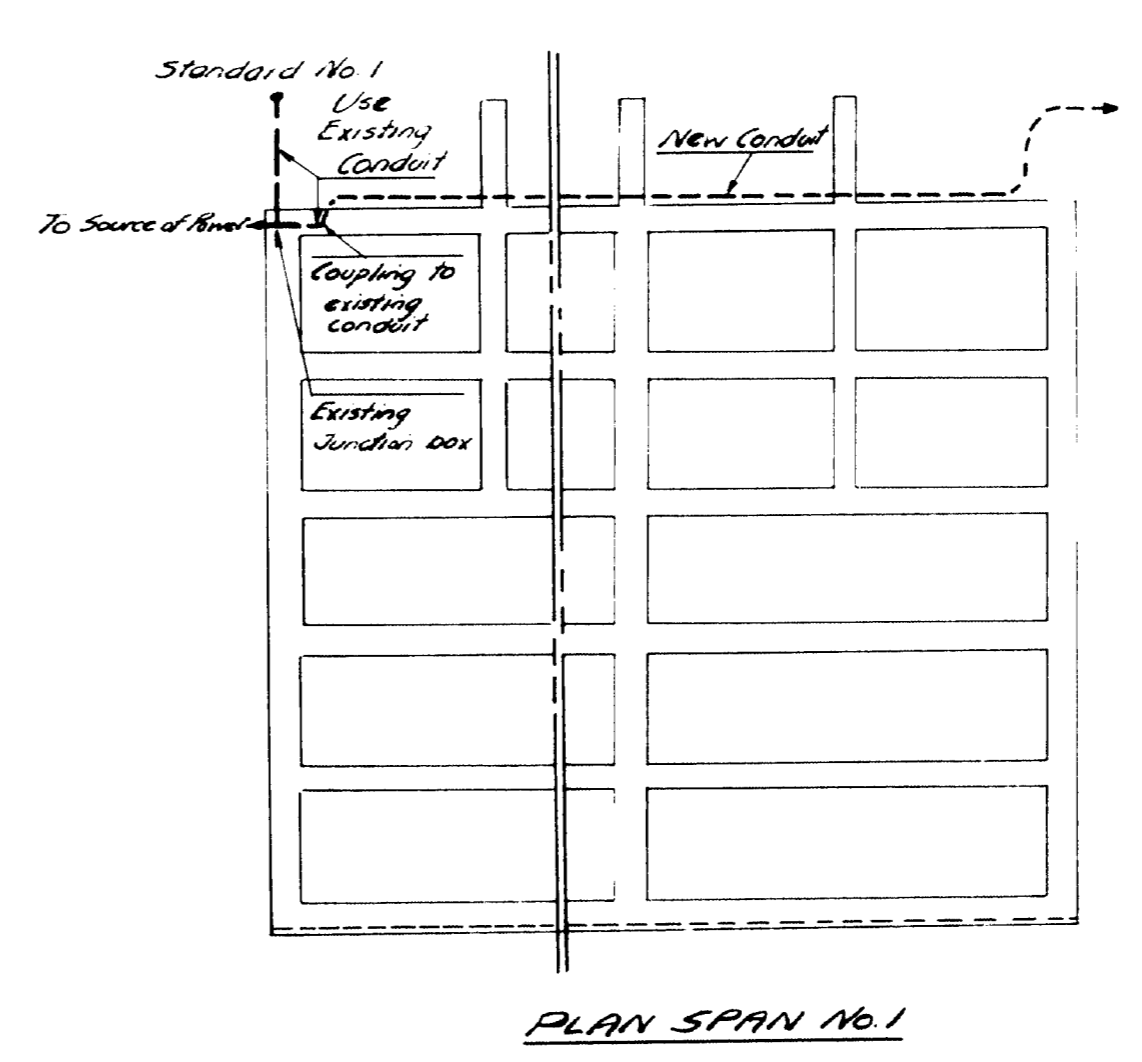
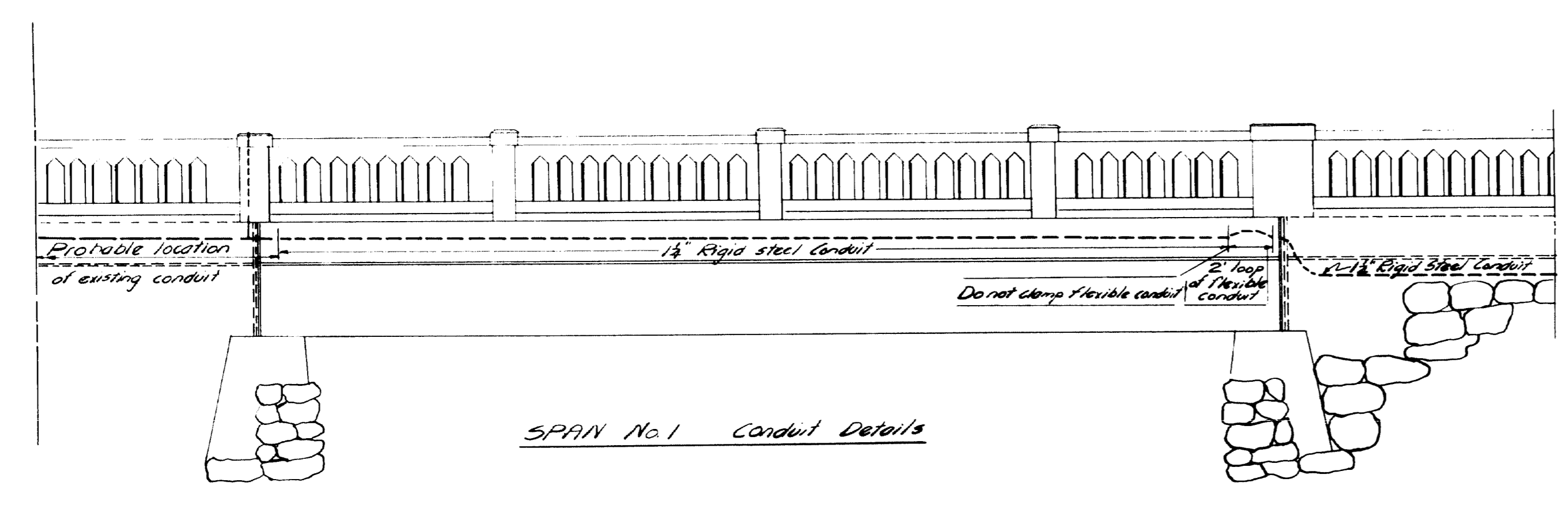
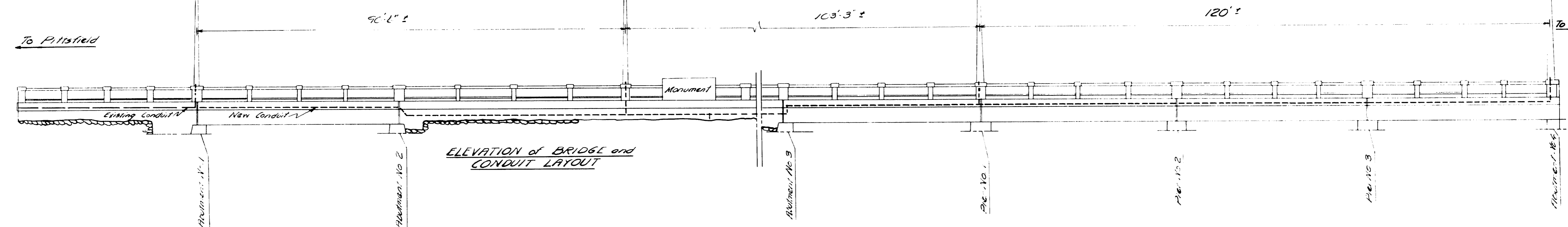
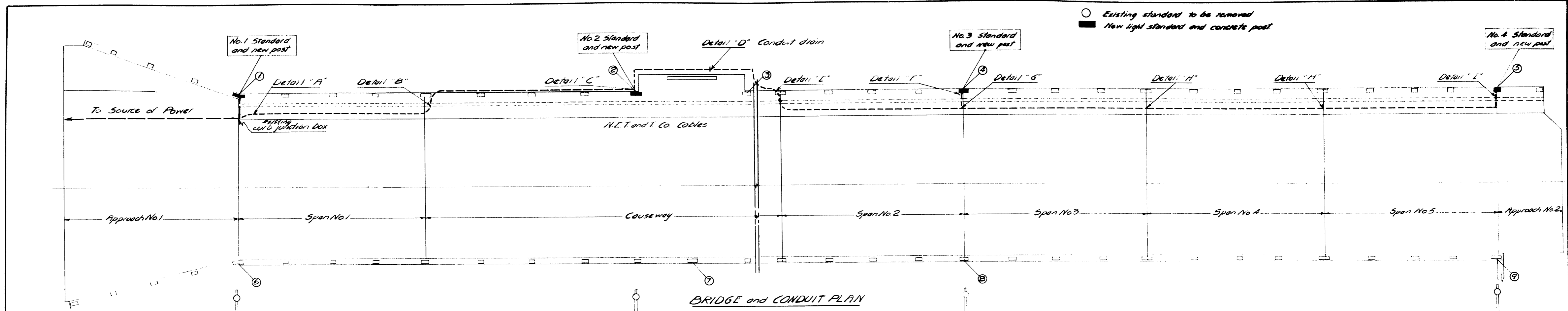
STEEL LIST

MARK	NUMBER	SIZE	LENGTH	LOCATION	ON HAND
D	8	$\frac{1}{2}''$	1'-0"	Lamp posts	4
D _r	10	$\frac{3}{8}''$	0'-9"	Rail to monument	all
D _m	2	$\frac{3}{8}''$	2'-9"	" "	none
D _m	4	$\frac{3}{8}''$	0'-4"	" to "	all
R	16	$\frac{3}{8}''$	3'-0"	" "	"
R _u	14	$\frac{3}{8}''$	2'-9 $\frac{1}{2}''$	" ket posts	"
R _u	6	$\frac{3}{8}''$	5'-10 $\frac{1}{2}''$	Upper rail post to man	"
R _l	8	$\frac{3}{8}''$	4'-1 $\frac{1}{2}''$	Lower "	"
P	24	$\frac{3}{8}''$	4'-6"	posts	16
P ₂	8	$\frac{3}{8}''$	5'- $\frac{1}{2}''$	Lamp posts	4
S ₁	6	$\frac{1}{2}''$	3'-10"	Sidewalk	none
S ₂	6	"	5'-3"	"	"
S ₃	2	"	26'-3"	"	"
S ₄	6	"	2'-6"	"	"
S ₅	2	"	4'-0"	"	"
S ₆	14	"	5'-6"	"	"
S ₇	31	"	2'-0"	"	"
S ₈	2	"	22'-0"	"	"

R.H. Brown

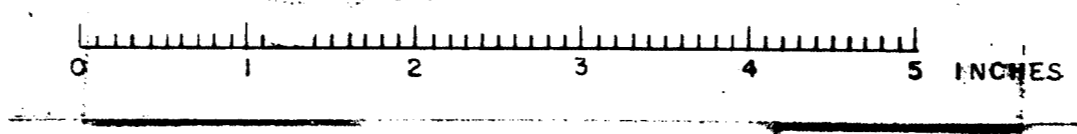
MAINE HIGHWAY COMMISSION
BRIDGE DIVISION
MAIN ST. BRIDGE
OVER
EAST BRANCH SEBASTICOOK RIVER
IN THE TOWN OF
NEWPORT, PENOBSCOT CO
MEMORIAL RAIL & FOUNDATION
SHEET 13 OF 13 AUGUSTA, ME MARCH 1931





NOTES

All light standards to be set plumb
 All conduit to be galvanized
 Pull wires shall be installed in all new conduits and in old conduit from LR47 to source of power
 All conduit, flexible conduit, and fittings are those listed in *Nesco Catalog #100 (1948)* unless noted. Substitutions may be made provided they are equivalent and are approved by the State Highway Commission.

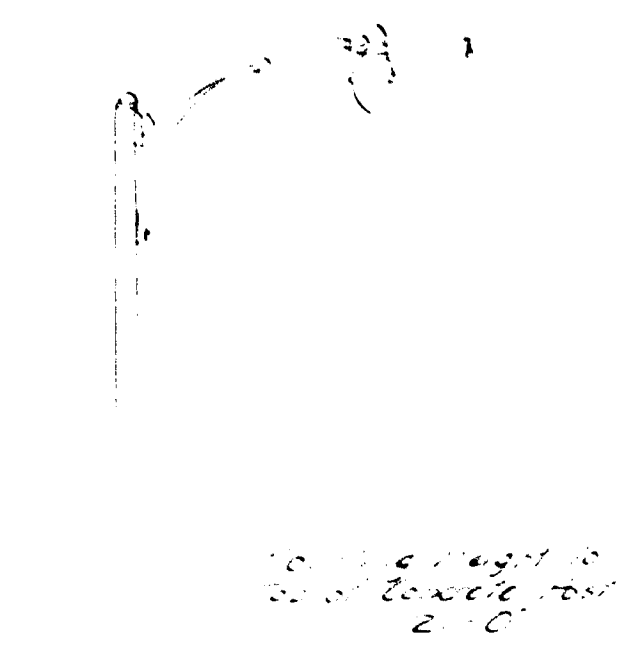


DESIGN - MURRELL
 TRACE - MURRELL
 CHECK - M.A.P.

BRIDGE - 2501

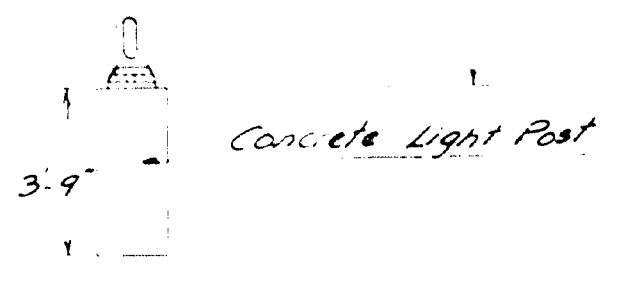
STATE HIGHWAY COMMISSION
 BRIDGE DIVISION
MAIN ST. BRIDGE
 OVER
EAST BRANCH OF
SEBASTICOOK RIVER
 IN THE TOWN OF
NEWPORT, PENOBSCOT COUNTY
 LIGHTING SYSTEM
 GENERAL PLAN
 SHEET 1 OF 3 AUGUSTA, MAINE JAN. 1955

59-142

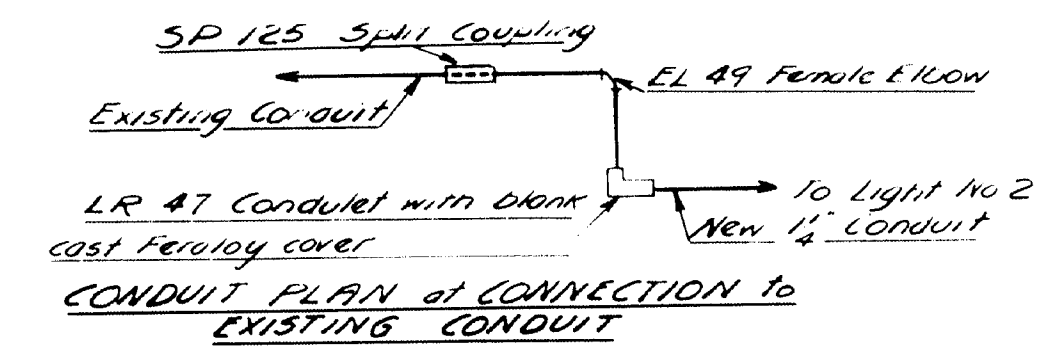
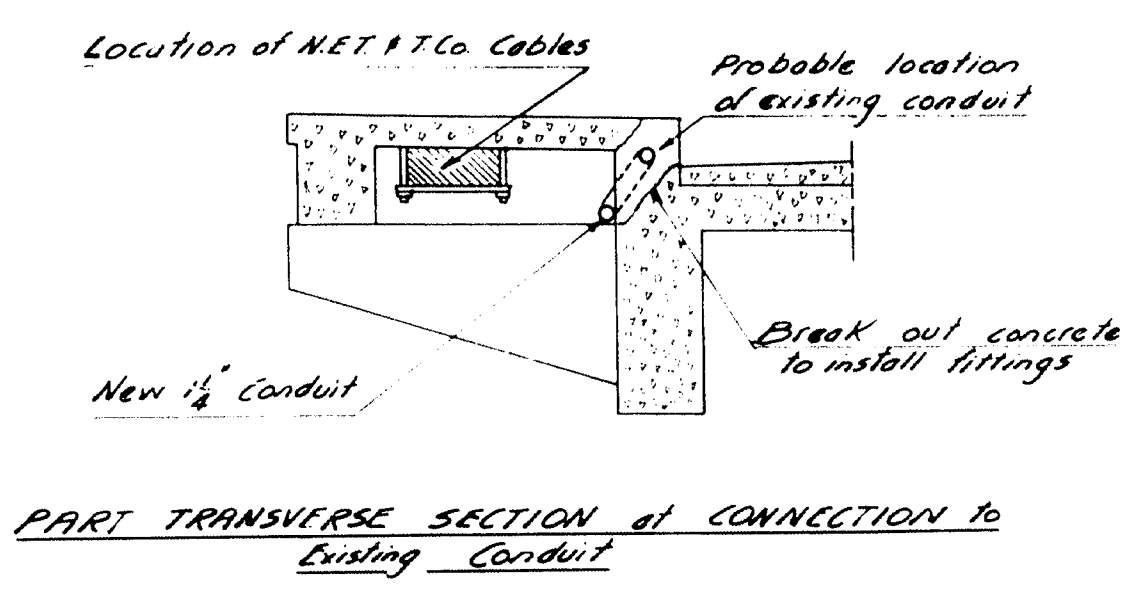


Aluminum Standard as manufactured by HUBBARD ALUMINUM PRODUCTS CO. Pittsburgh, Pa. (or equivalent)
Pole Type 1, Bracket Style B with 4"x6" Reinforced Handhole and cover Hubbard No. 12B20BB (1951)
Mounting Height 21'
Bolt Circle dia 10"
Bracket length 8'
N_o Required 4

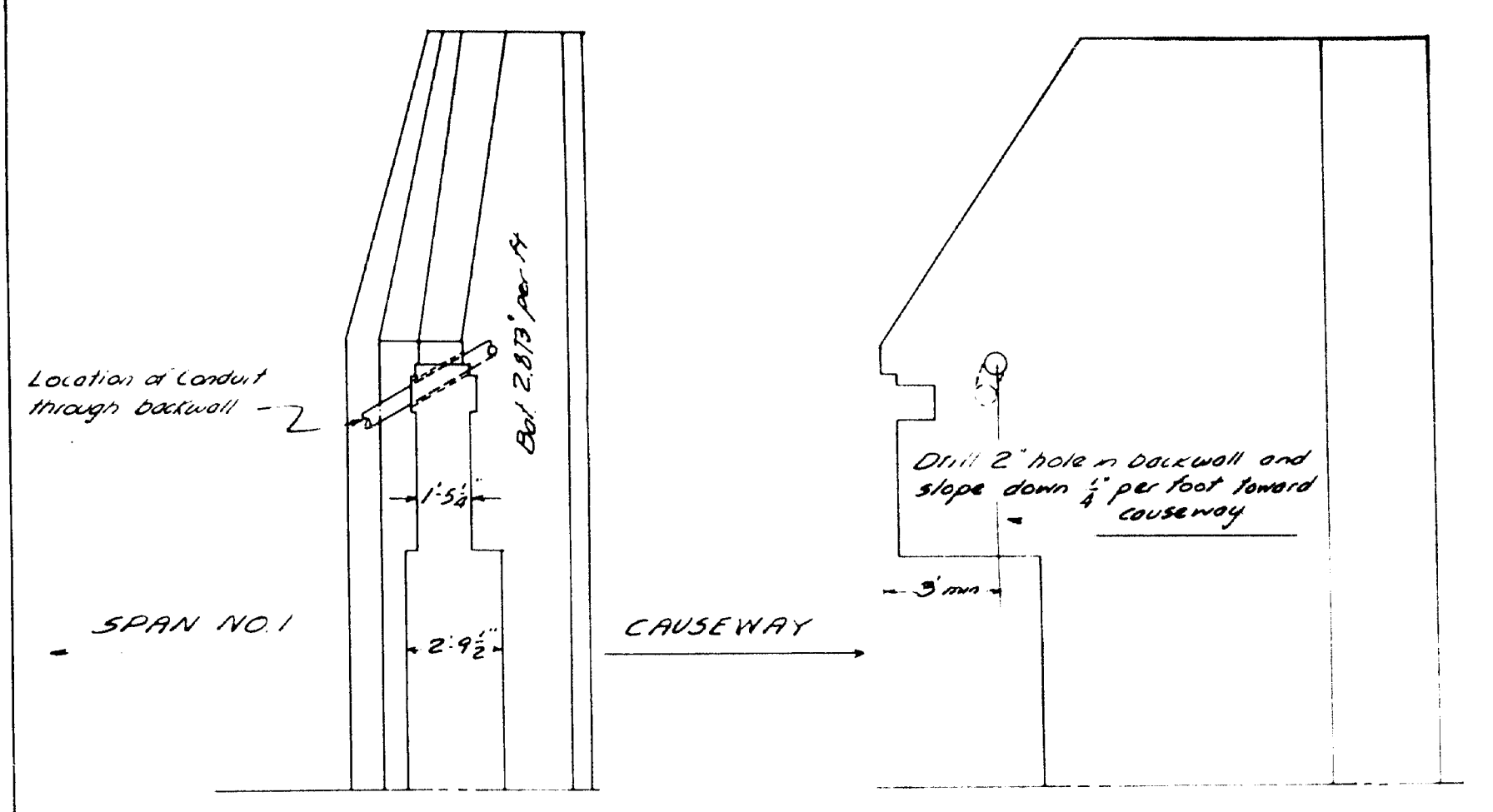
Pendant Luminaire to be supplied by others
Light standards are to be set plumb
Coat surfaces of concrete in contact with light standard bases, portion of anchor rods above top of concrete posts and nuts with an aluminum impregnated caulking compound



NOTE
Patching and repairing of concrete shall conform to Article 701-26, State Highway Commission Standard Specifications, Revision of May, 1953

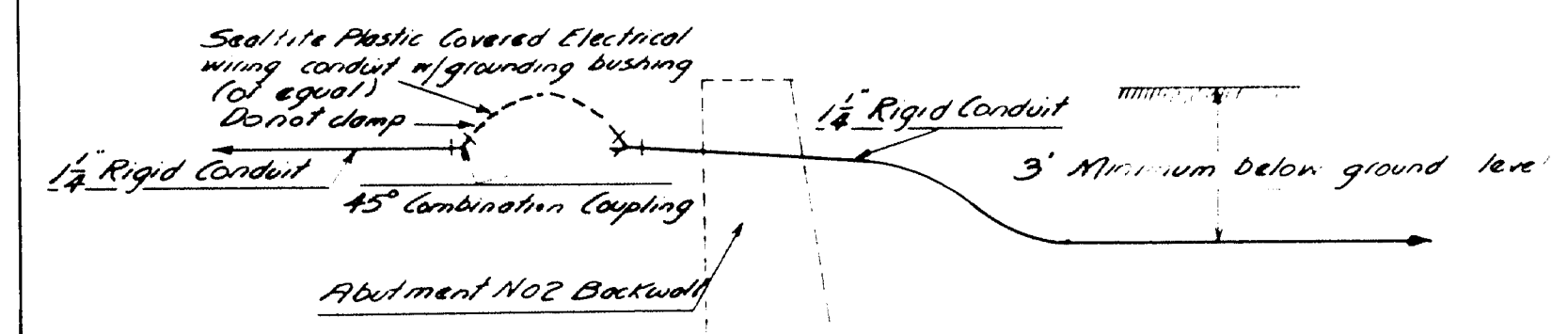


DETAIL "A"

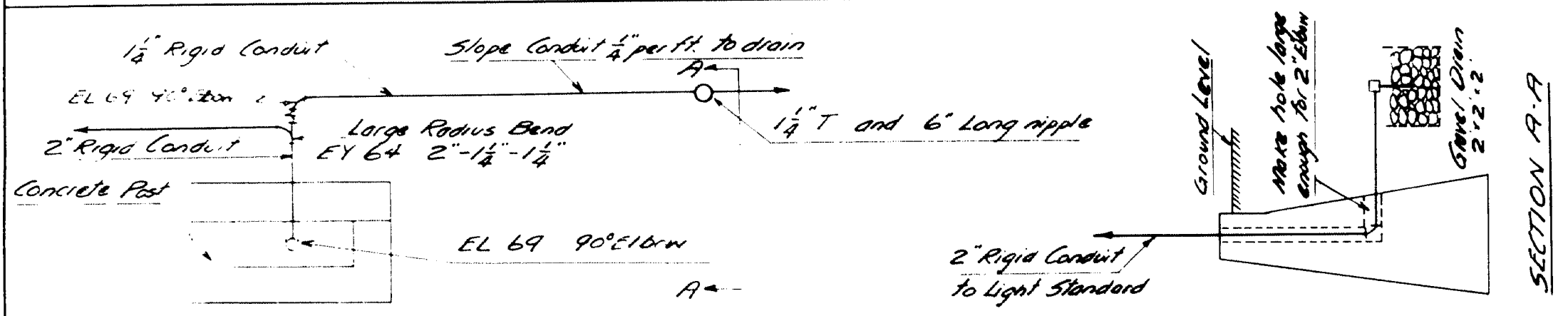


Part Plan Abutment No 2

Part Elevation Abutment No 2

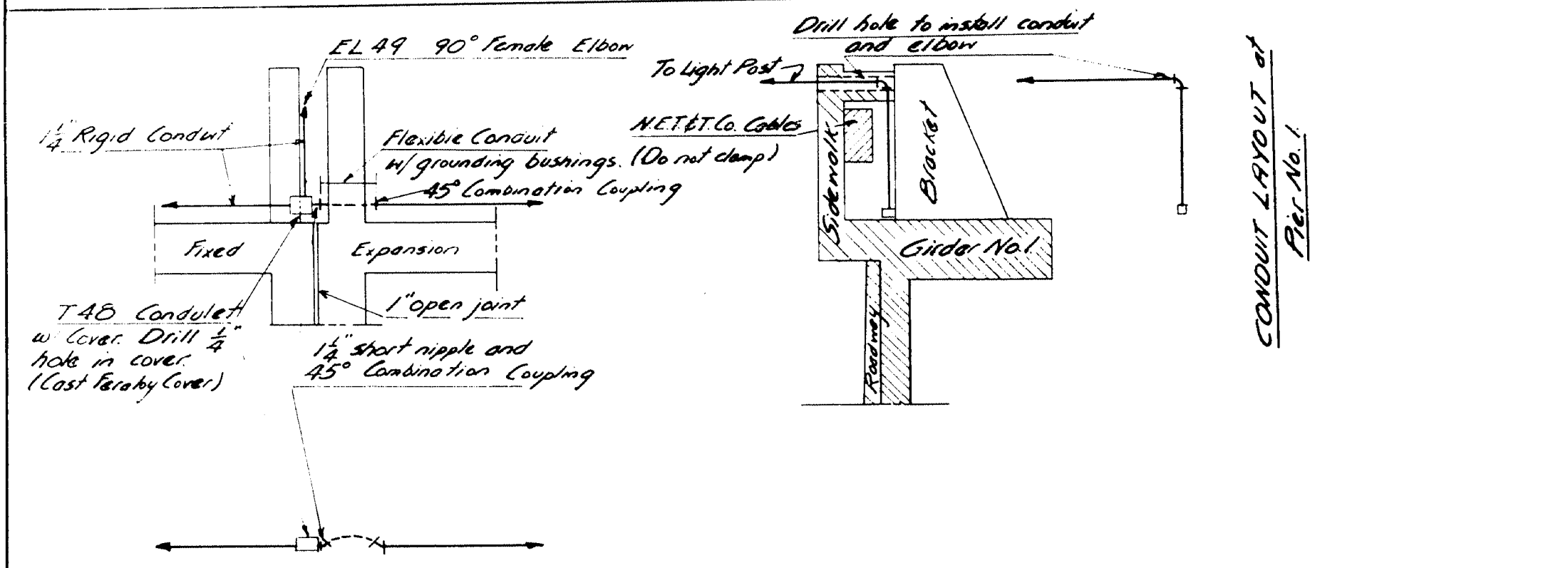


DETAIL "B" CONDUIT PLAN of ABUTMENT NO 2

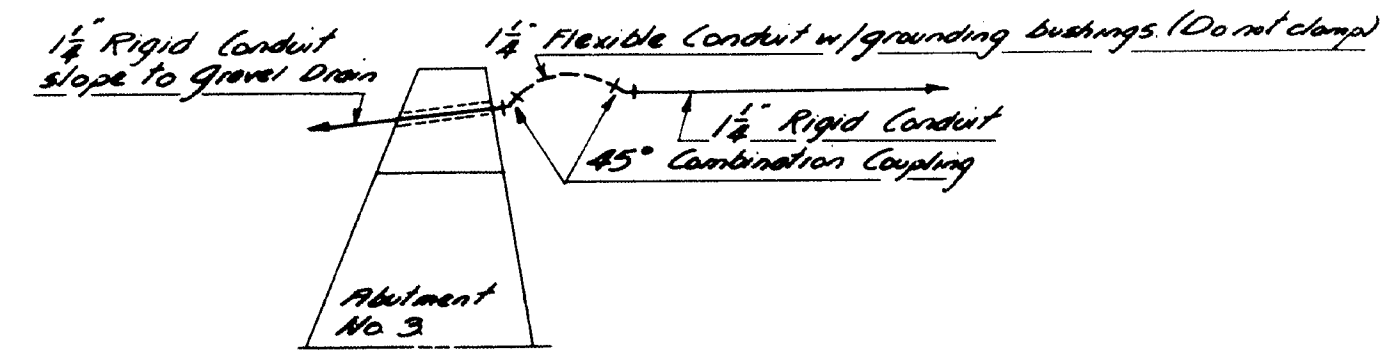
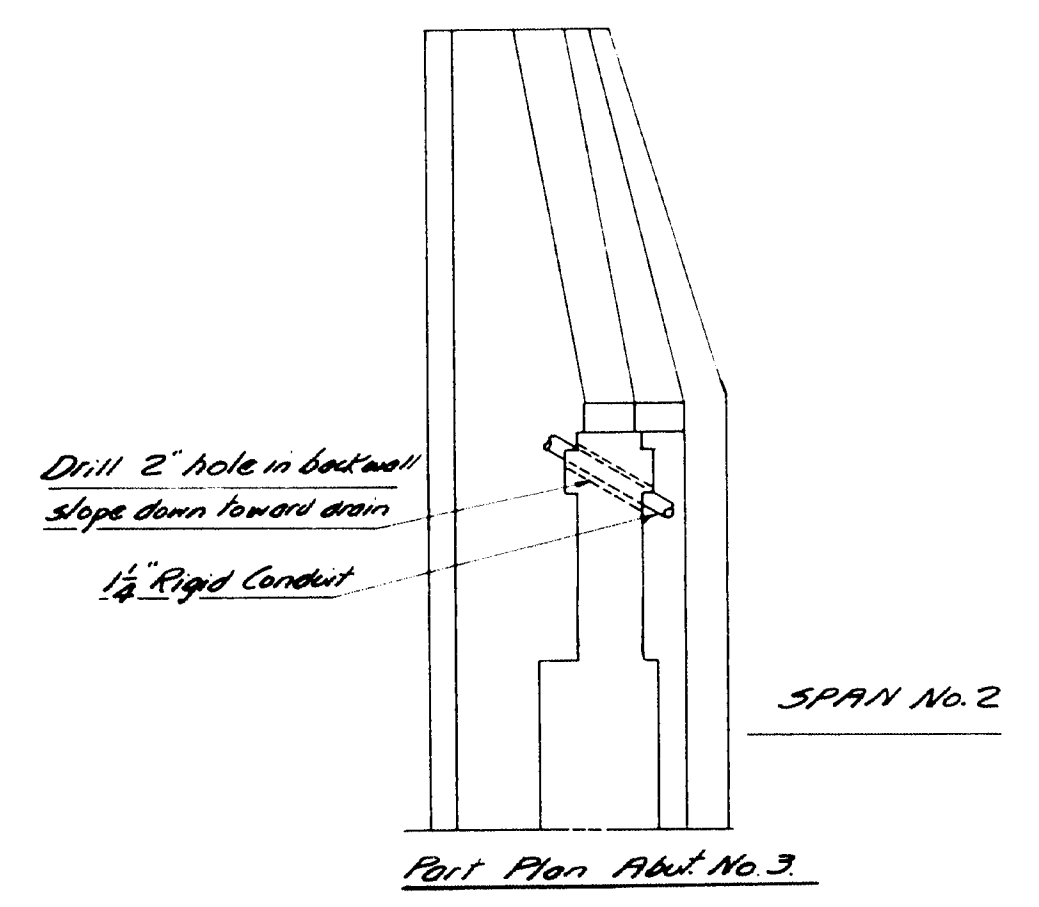


CONDUIT PLAN of STANDARD NO 2

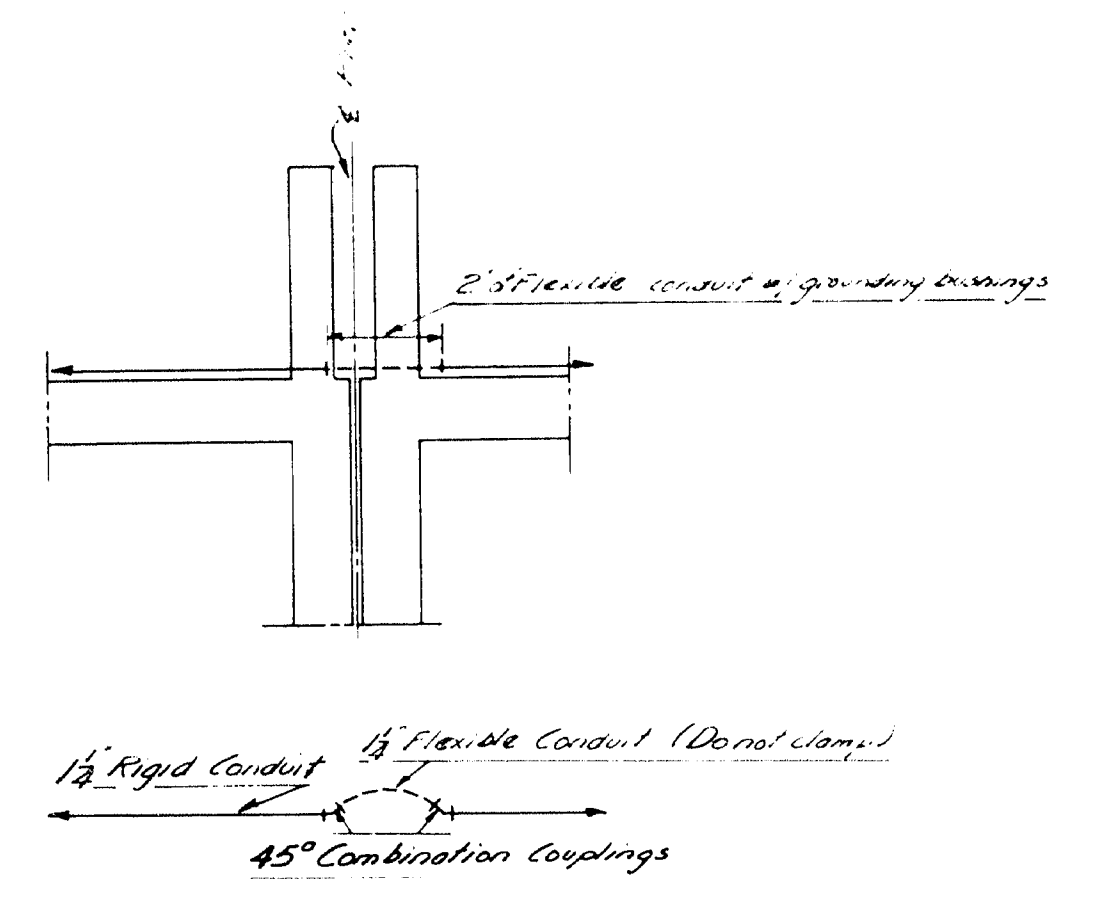
DETAILS "C" and "D"



CONDUIT DETAIL of PIER No 1 and LIGHT No 3
DETAIL "F" and "G"



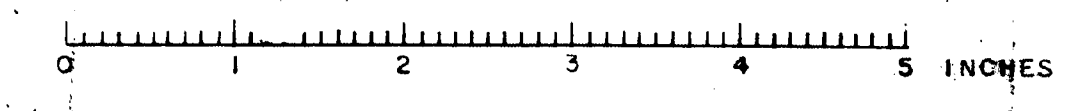
DETAIL "E" of ABUTMENT No 3

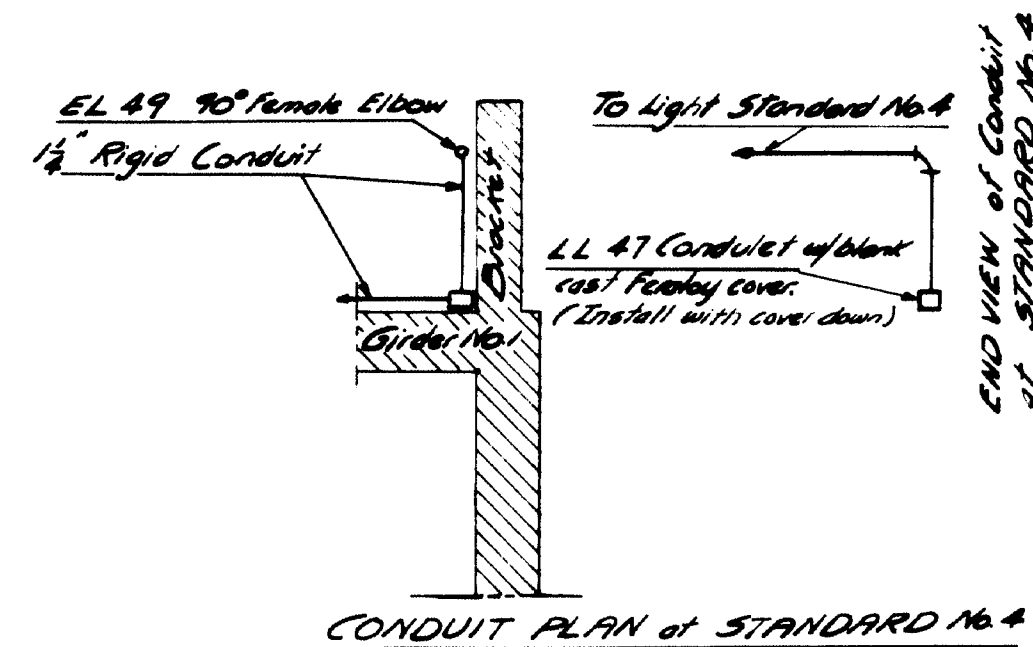


DETAIL "H" of Piers 2 and 3

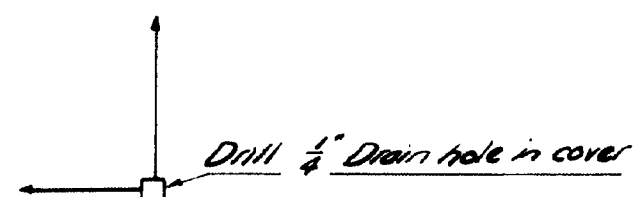
DESIGN - MURRELL
TRACE - MURRELL
CHECK - MURPHY
BRIDGE - 2501
STATE HIGHWAY COMMISSION
BRIDGE DIVISION
MAIN ST. BRIDGE
OVER
EAST BRANCH OF
SEBASTICOOK RIVER
IN THE TOWN OF
NEWPORT, PENOBSCOT COUNTY
LIGHTING SYSTEM
CONDUIT DETAILS
SHEET 2 OF 3 AUGUSTA, MAINE JAN. 1955

59-143



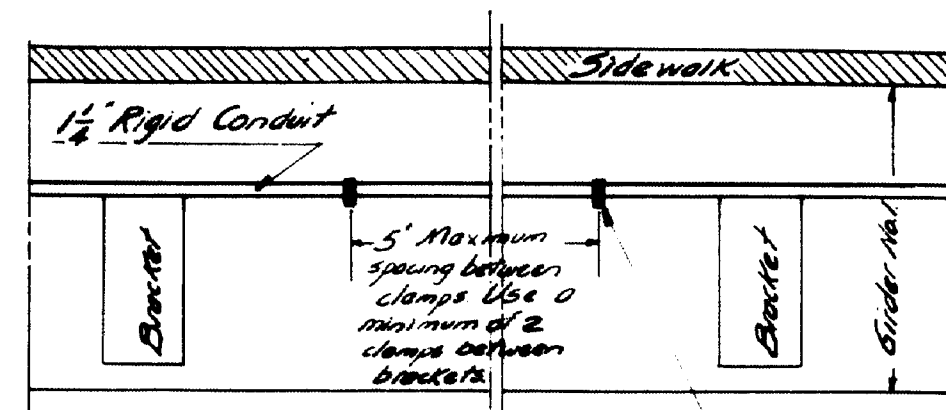


CONDUIT PLAN of STANDARD No. 4



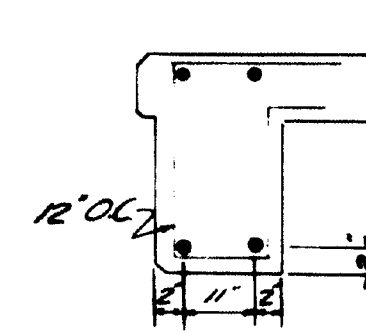
CONDUIT ELEVATION of STANDARD No. 4

DETAIL 'I'

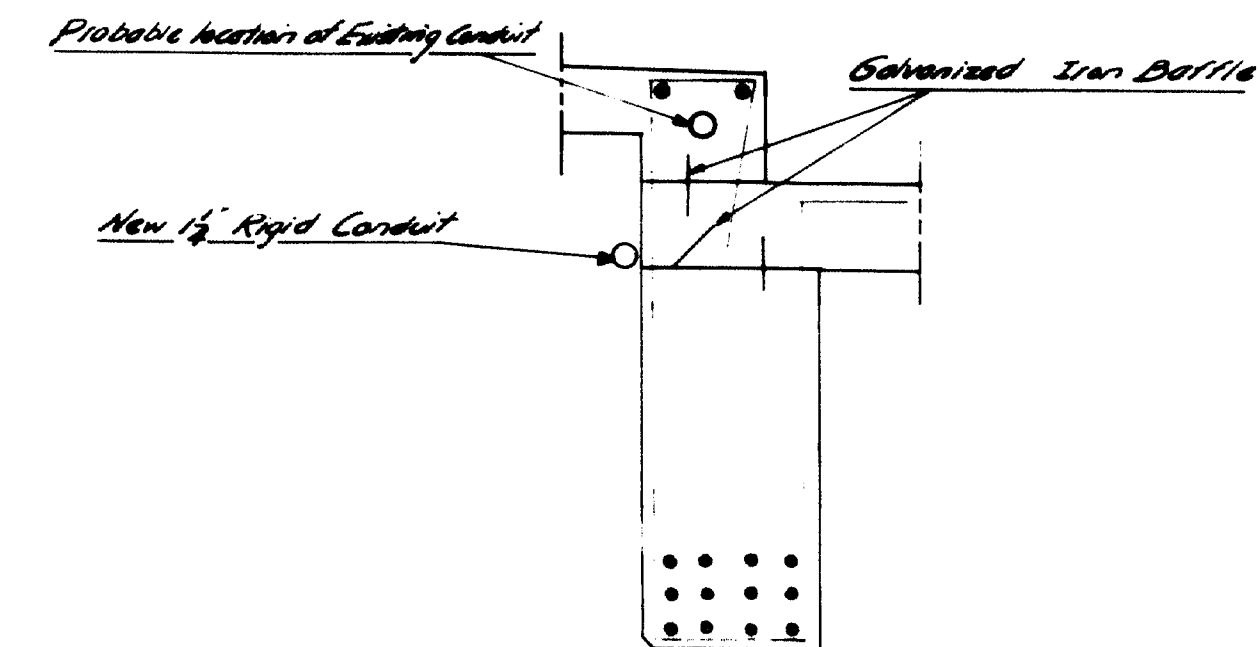


CONDUIT CLAMPING DETAIL

- 1-Hole Malleable Iron Pipe Strap, Cat. No. 179, w/ 3/8" hole.
- Star Lock Expansion Shield (Long) #3620 for 1/2" Machine Bolt.
- 1/2" Galvanized Hex Head bolt.
- 3/8" Galvanized split lockwasher.



Fascia Girder

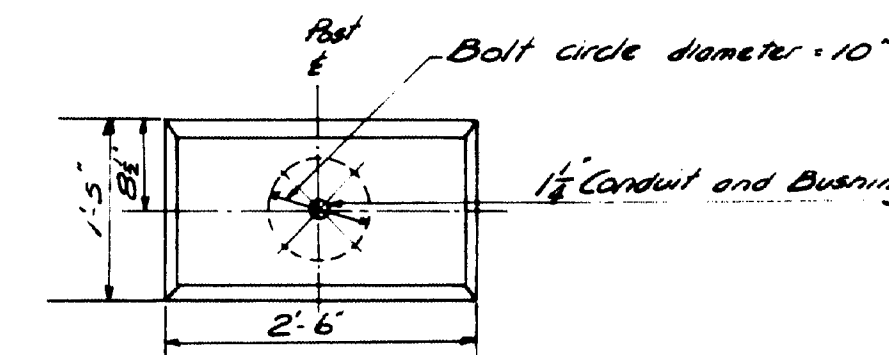


Girder No. 1

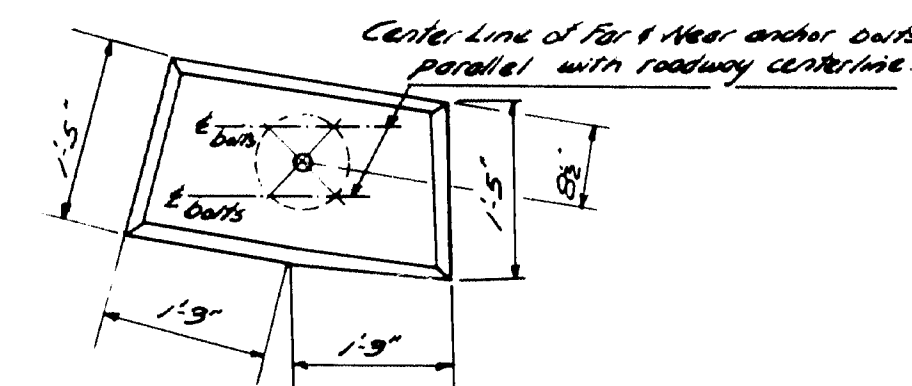
EXISTING GIRDERS (Reinforcing details)

NOTES

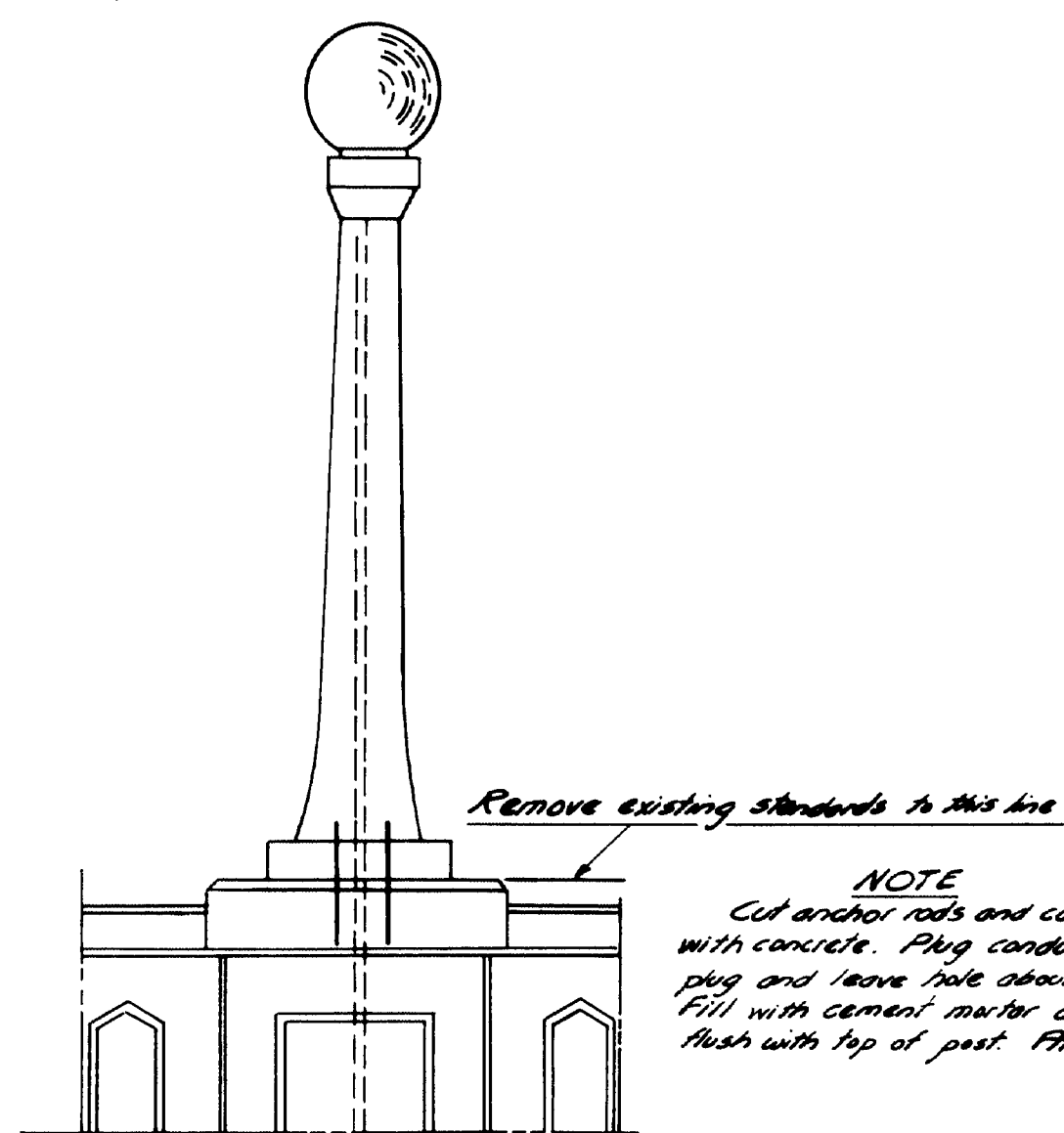
Wrap the end of each rail 6" with 2 layers of roofing felt. Put in brds and build post forms so that the rails extend into post forms 1 1/2". When post forms are removed cut away all exposed felt. All roofing felt to be 2-ply. All edges of concrete to be chamfered 1/2" unless otherwise indicated. All concrete to be Class "Y".



Anchor Bolt & Conduit Plan for New Posts 2, 3, and 4

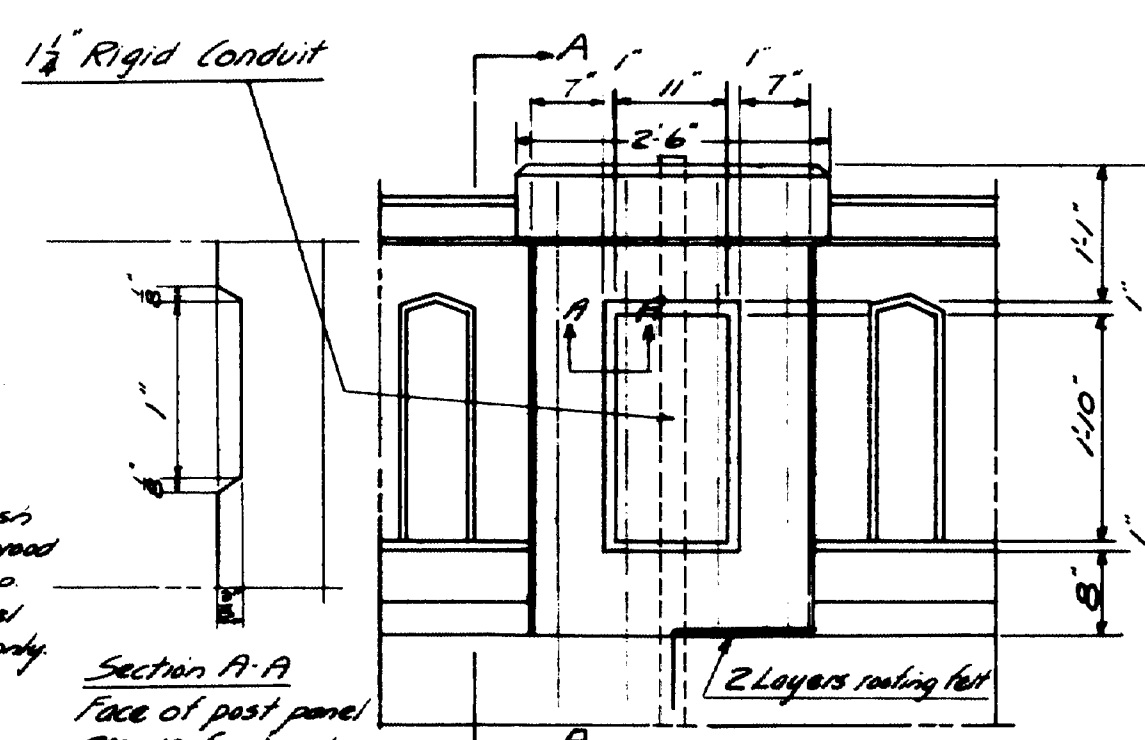


PLAN VIEW - POST FOR STANDARD NO. 1

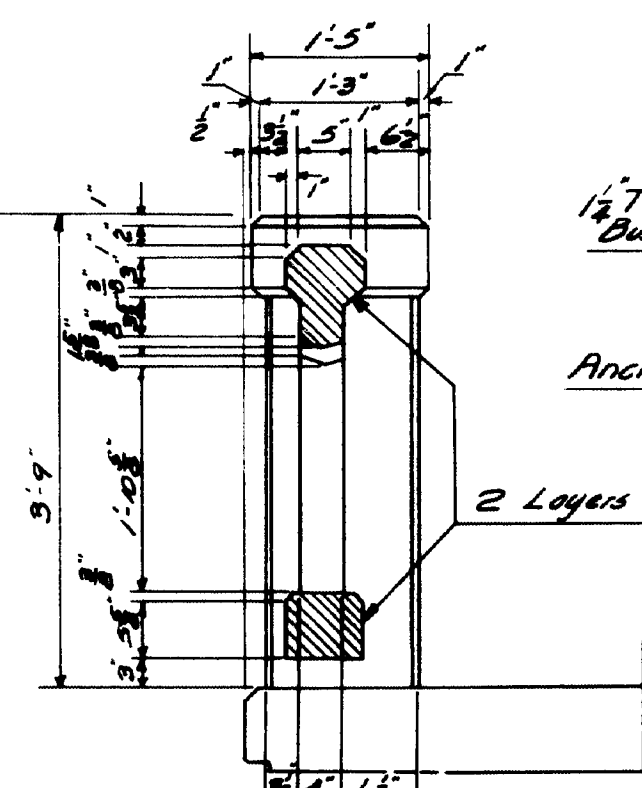


EXISTING LIGHT STANDARD (9 to be removed)

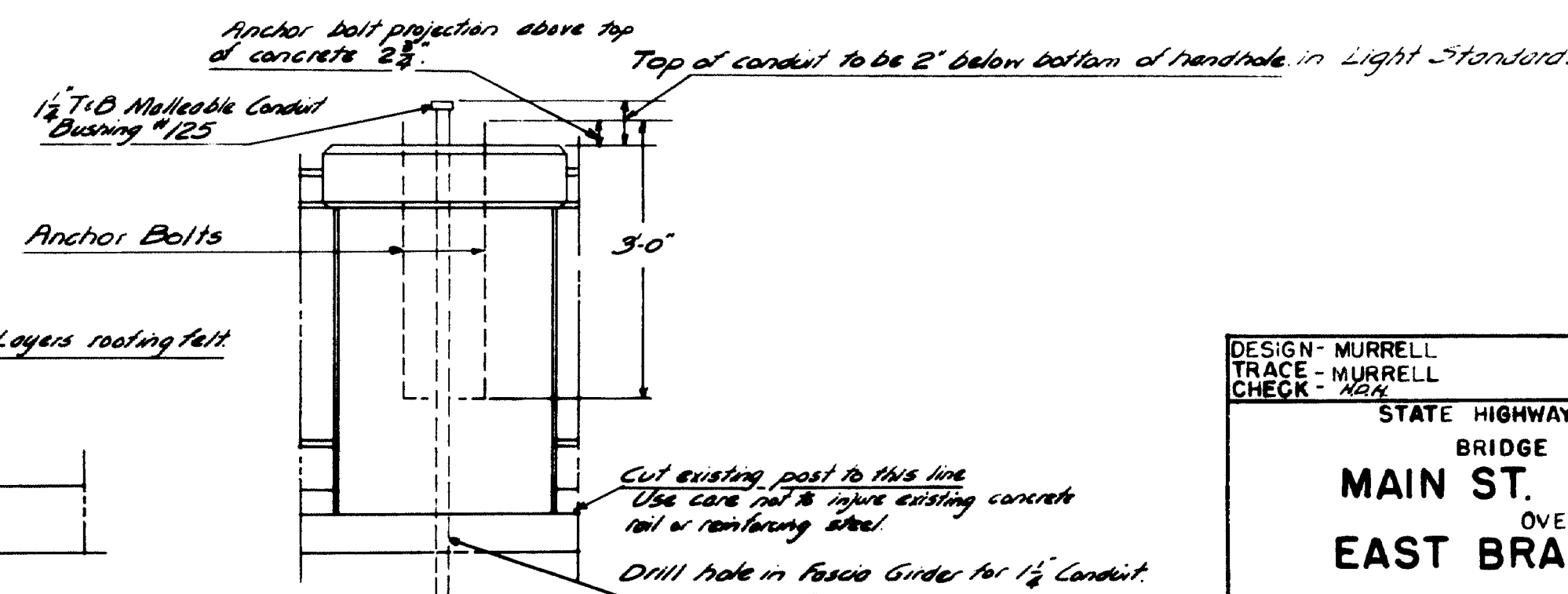
NOTE
Cut anchor rods and conduit flush with concrete. Plug conduit with wood plug and leave hole about 3" deep. Fill with cement mortar and trowel flush with top of post. Put 5 postwork.



DETAIL for NEW POSTS of STANDARDS 2, 3, and 4



SECTION A-A



CONDUIT and ANCHOR BOLT DETAILS for NEW POSTS of STANDARDS 2, 3, 4

DESIGN - MURRELL	BRIDGE - 2501
TRACE - MURRELL	
CHECK - MRM	
STATE HIGHWAY COMMISSION	
BRIDGE DIVISION	
MAIN ST. BRIDGE	
OVER	
EAST BRANCH OF	
SEBASTICOOK RIVER	
IN THE TOWN OF	
NEWPORT, PENOBSCOT COUNTY	
LIGHTING SYSTEM	
RAIL DETAILS	
SHEET 3 OF 3	AUGUSTA, MAINE JAN. 1955

59-144

