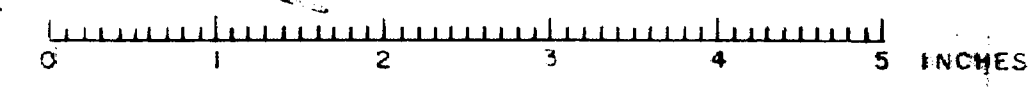


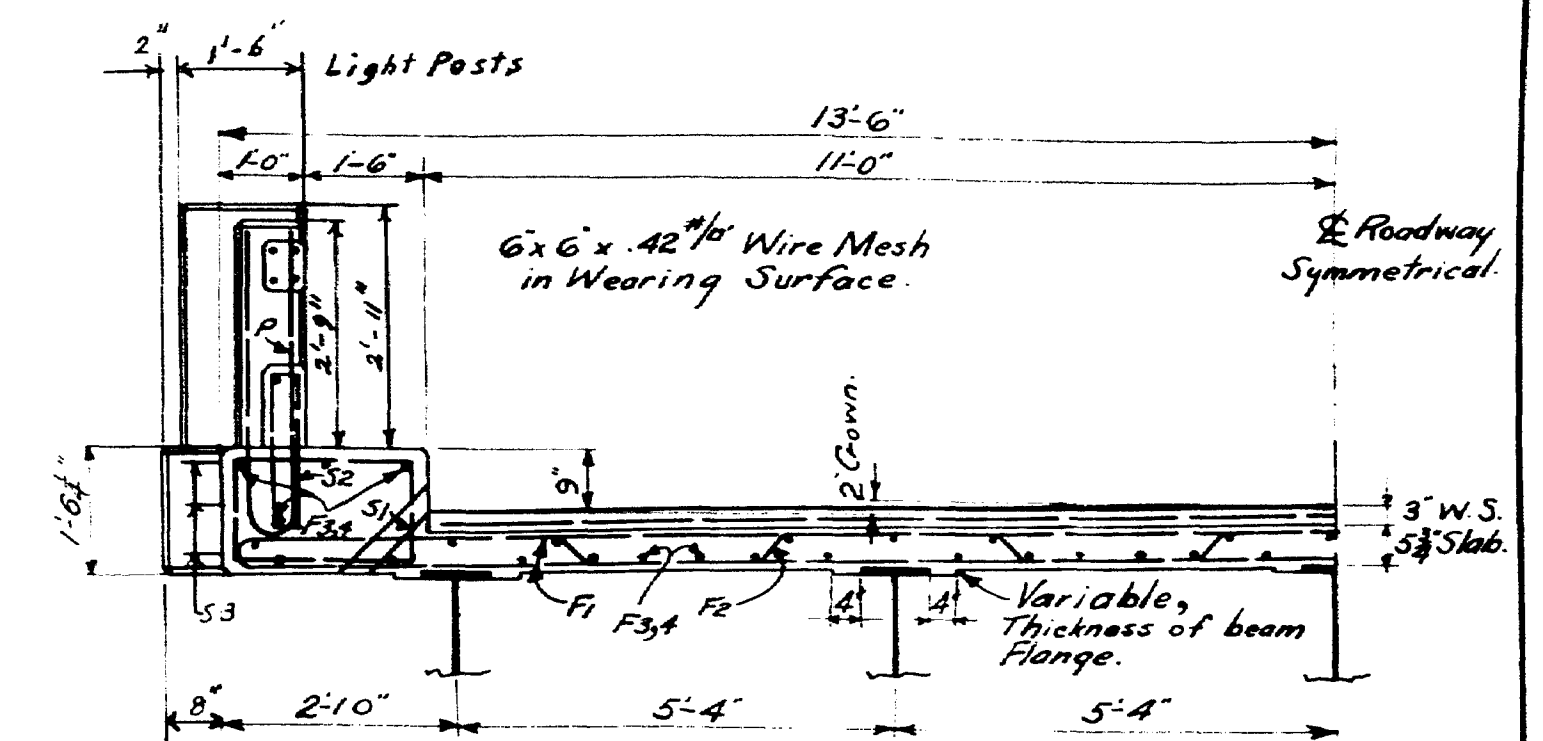
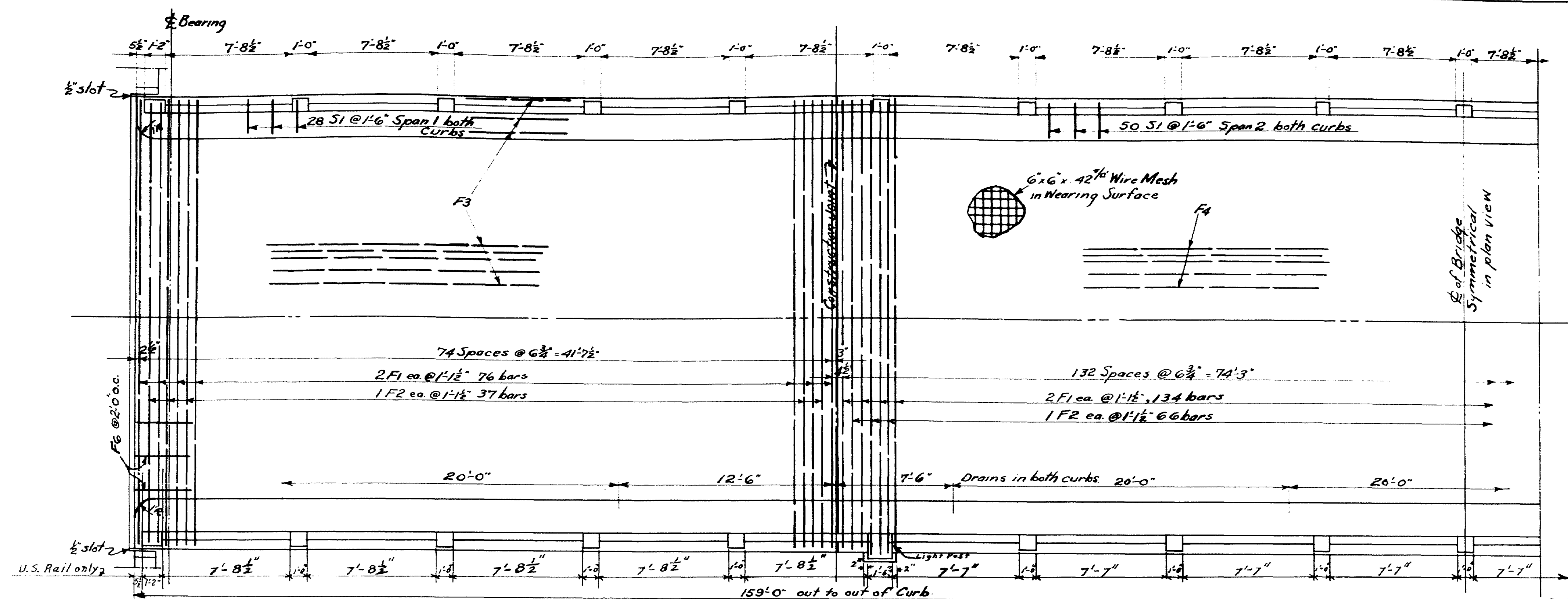
DESIGN - C. ALLEN  
 TRACE - J.H.S.  
 CHECK - *[Signature]*  
 BRIDGE - 3857  
 STATE HIGHWAY COMMISSION  
 BRIDGE DIVISION  
**WHITES BRIDGE**  
 OVER  
**OUTLET TO SEBAGO LAKE**  
 BETWEEN THE TOWNS OF  
**STANDISH & WINDHAM**  
**CUMBERLAND COUNTY**  
 CROSS SECTIONS  
 SHEET 2 OF 6 AUGUSTA, MAINE AUG. 1949

50-82

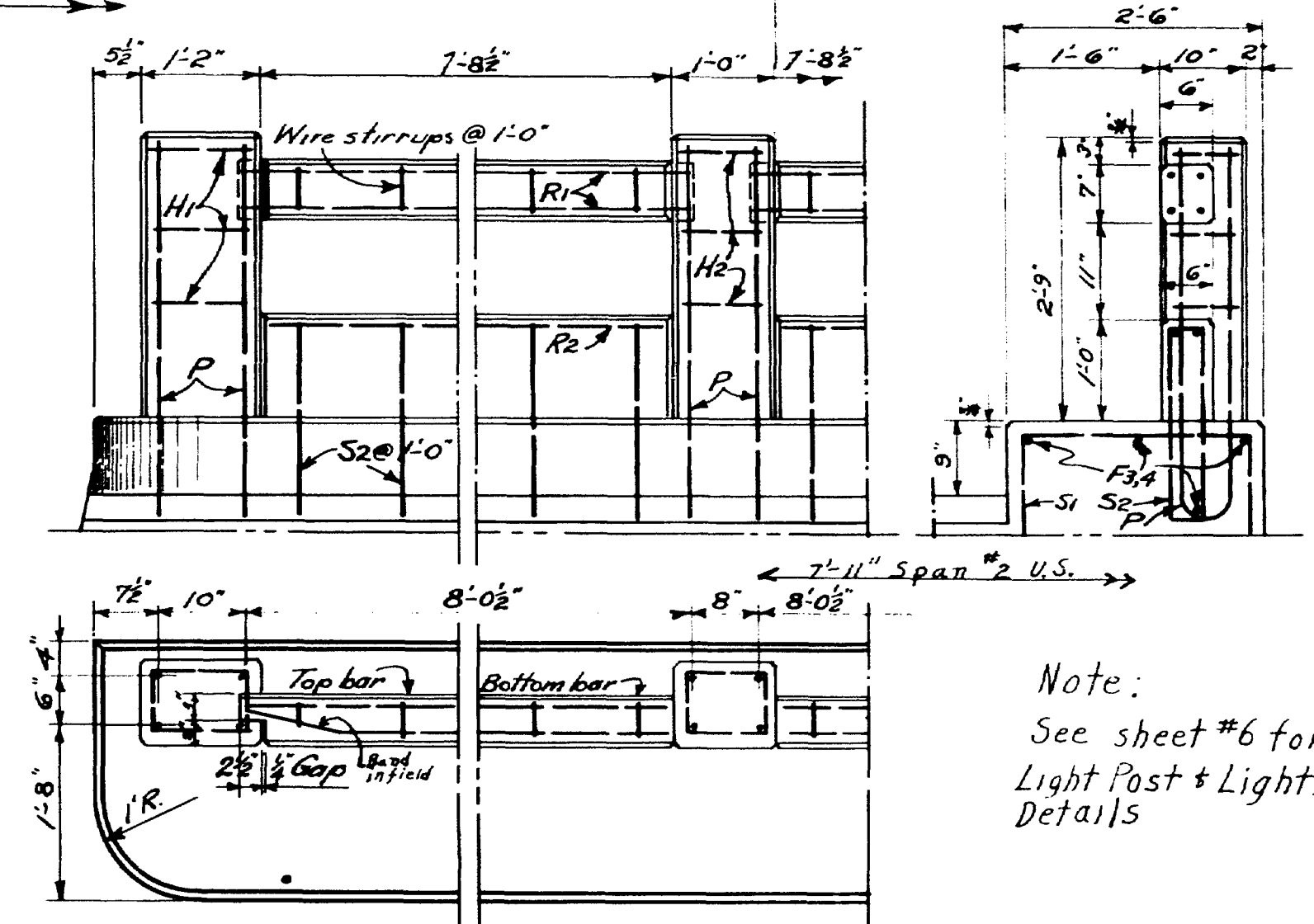
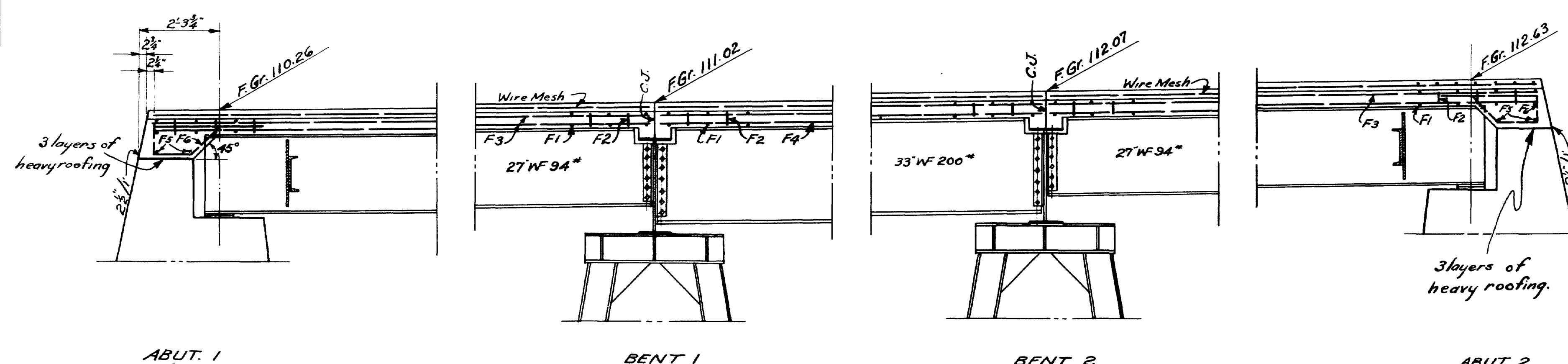




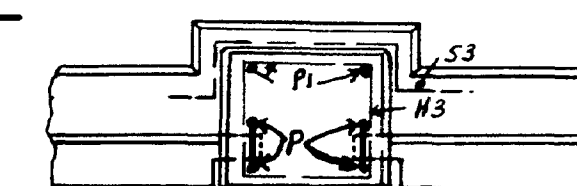




Curb to be cast with slab. Steel for posts and lower bar to be in position before curb is placed. The lower bar is to be cast in place. The top bar is to be precast and set in position so that the ends project into post forms 2". Wrap the torque end with 2 layers of heavy roofing. Wire stirrups for the top bar shall be constructed in the field from a single strand of #9 annealed wire making a complete turn around each reinforcing bar. All exposed edges of concrete are to be chamfered  $\frac{1}{2}$ " unless otherwise indicated.

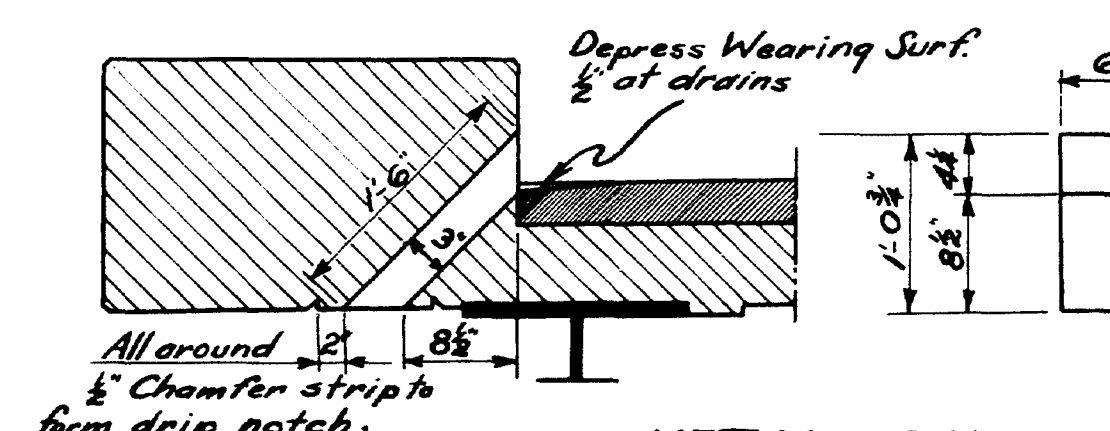


Note:  
See sheet #6 for  
Light Post & Lighting  
Details



LIGHT POST STEEL    LOADING    H15-44  
 $f_s = 18000$      $f_c = 1000$   
 n=10

## CONCRETE CLASSIFICATION



METAL DRAIN FORM  
\*24 Ga. Galvanized  
16 Required

Cover the  $\frac{1}{2}$ " slot between the superstructure and substructure on the back side with 2 layers of heavy roofing 10" wide. Coat the surface of the concrete and the back side of each layer as applied with a suitable grade of roofing cement.

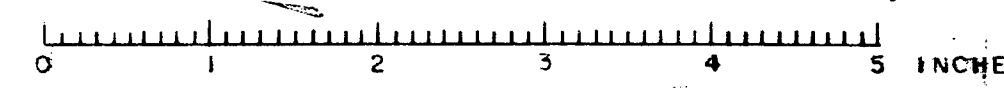
DESIGN - C. ALLEN  
TRACE - W. CHUTE  
CHECK - *W. CHUTE*

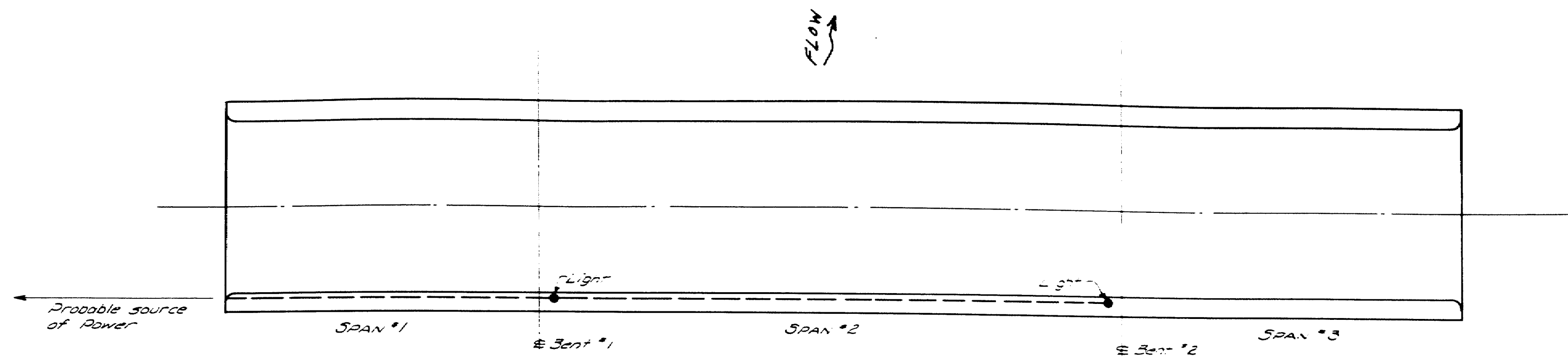
BRIDGE - 3857

STATE HIGHWAY COMMISSION  
BRIDGE DIVISION

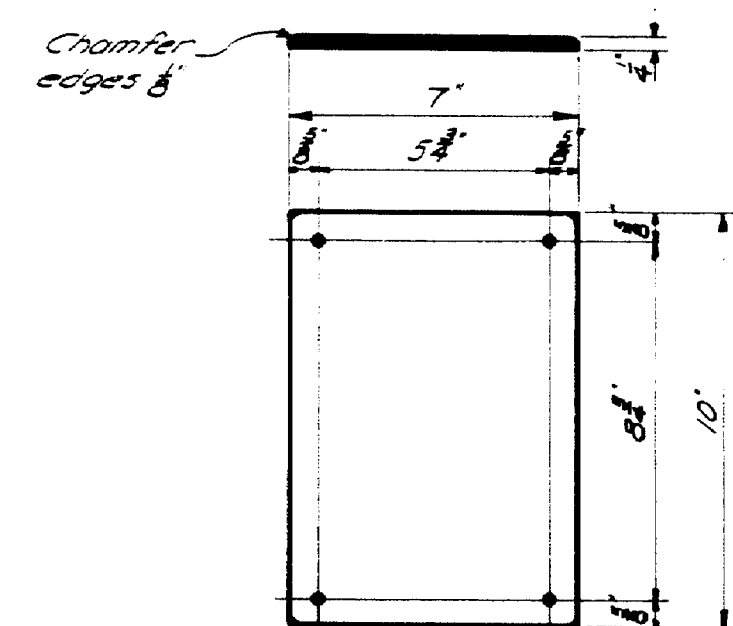
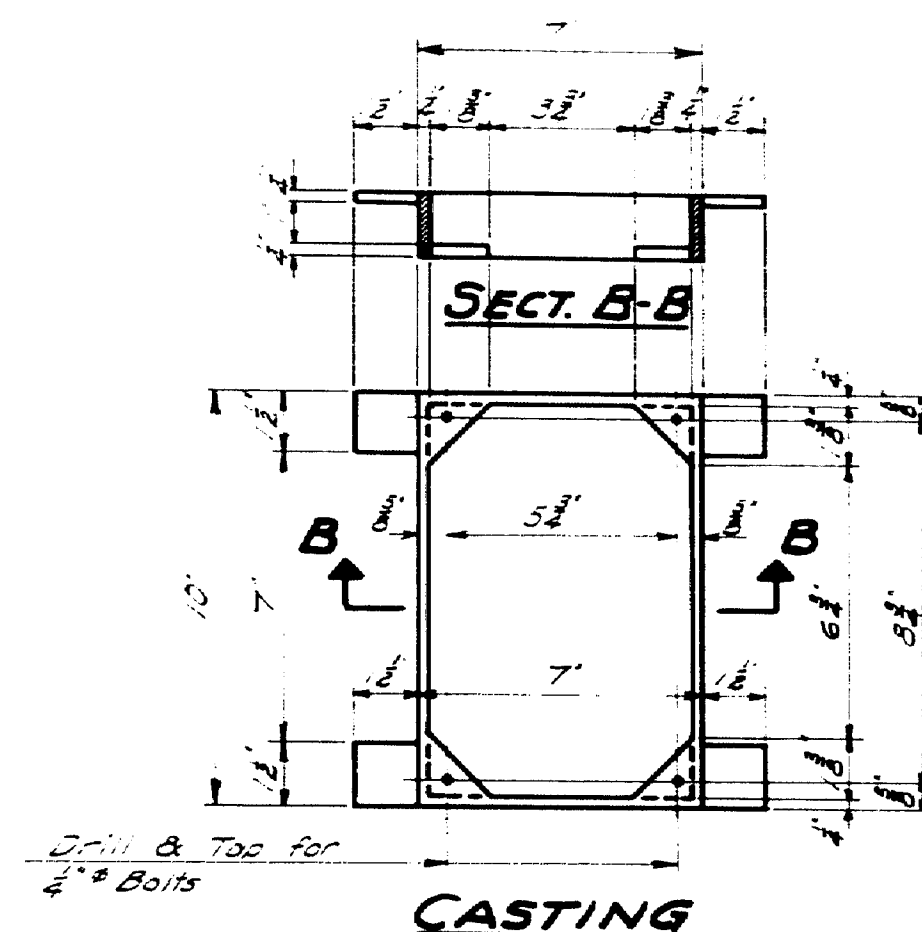
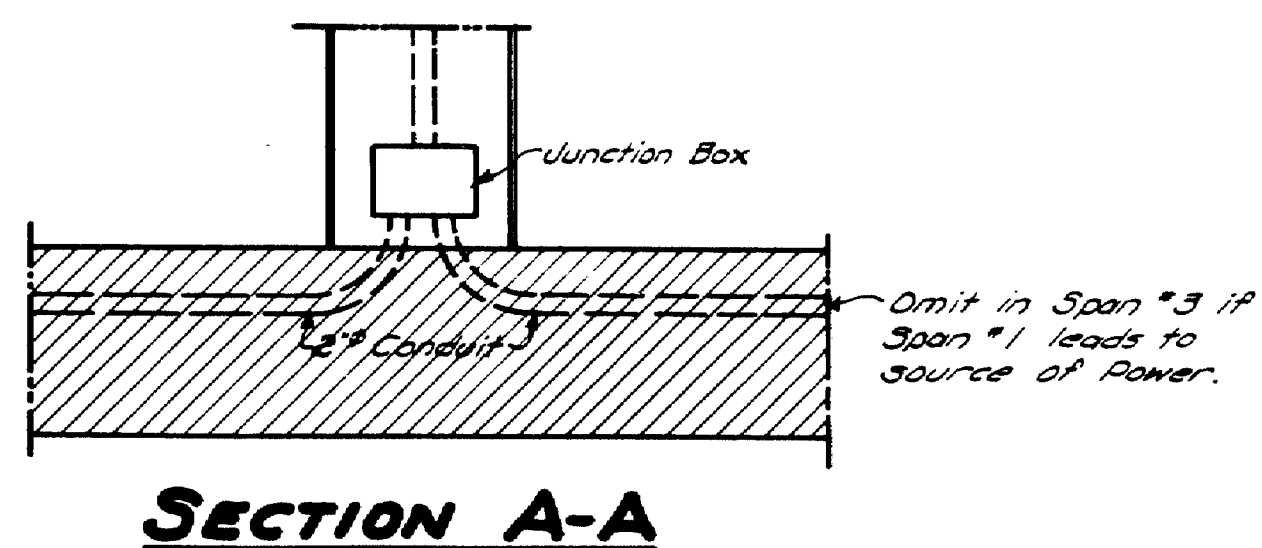
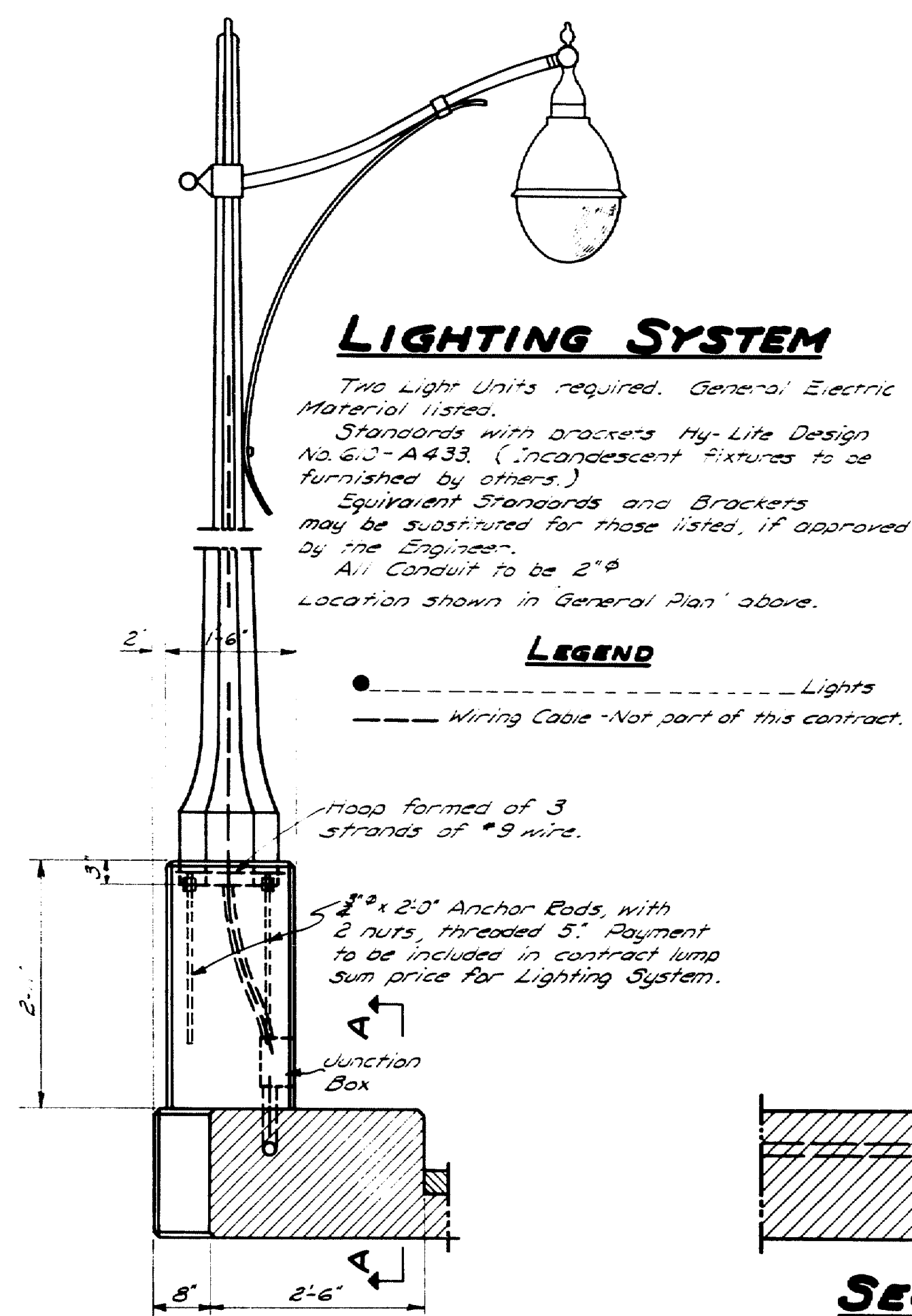
**WHITES BRIDGE**  
OVER  
**OUTLET TO SEBAGO LAKE**  
BETWEEN THE TOWNS OF  
**STANDISH & WINDHAM**  
**CUMBERLAND COUNTY.**  
SUPESTRUCTURE

SHEET *406* AUGUSTA, MAINE AUG. 1949





**GENERAL PLAN**



**JUNCTION BOX DETAIL**

2 Castings reg'd. (Zinc)  
2 Covers reg'd. (Zinc)  
8 Brass bolts 1/2" x 1/2"  
Payment to be included in contract lump sum price for Lighting System.

DESIGN - ALLEN	BRIDGE - 3857
TRACE - CLARK	
CHECK - <i>Vanille</i>	
STATE HIGHWAY COMMISSION BRIDGE DIVISION	
<b>WHITES BRIDGE</b>	
OVER	
<b>OUTLET TO SEBAGO LAKE</b>	
BETWEEN THE TOWNS OF	
<b>STANDISH &amp; WINDHAM</b>	
<b>CUMBERLAND COUNTY</b>	
LIGHTING SYSTEM	
SHEET 6 OF 6 AUGUSTA, MAINE AUGUST 1944	

50-86