

### Boring Notes

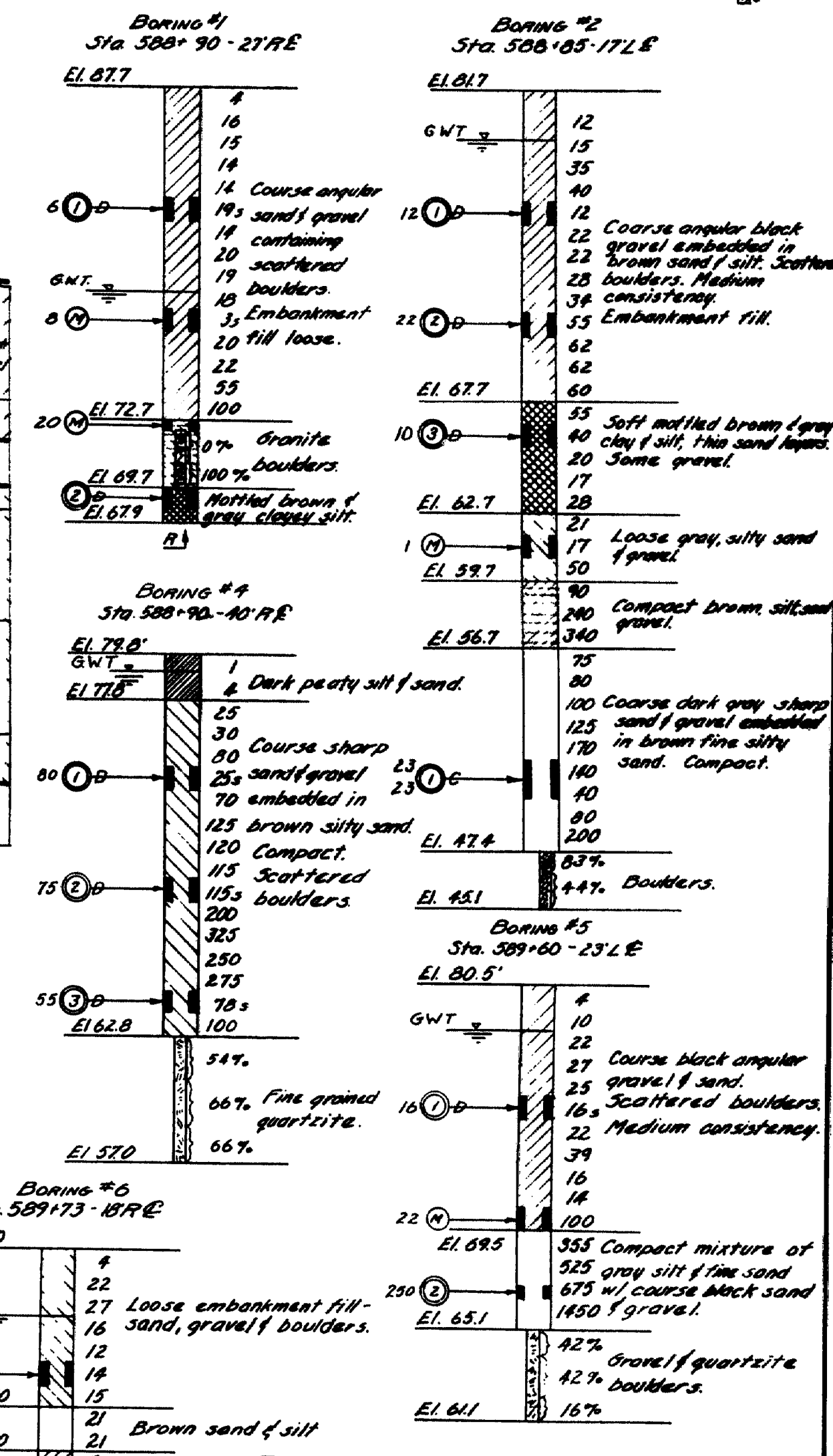
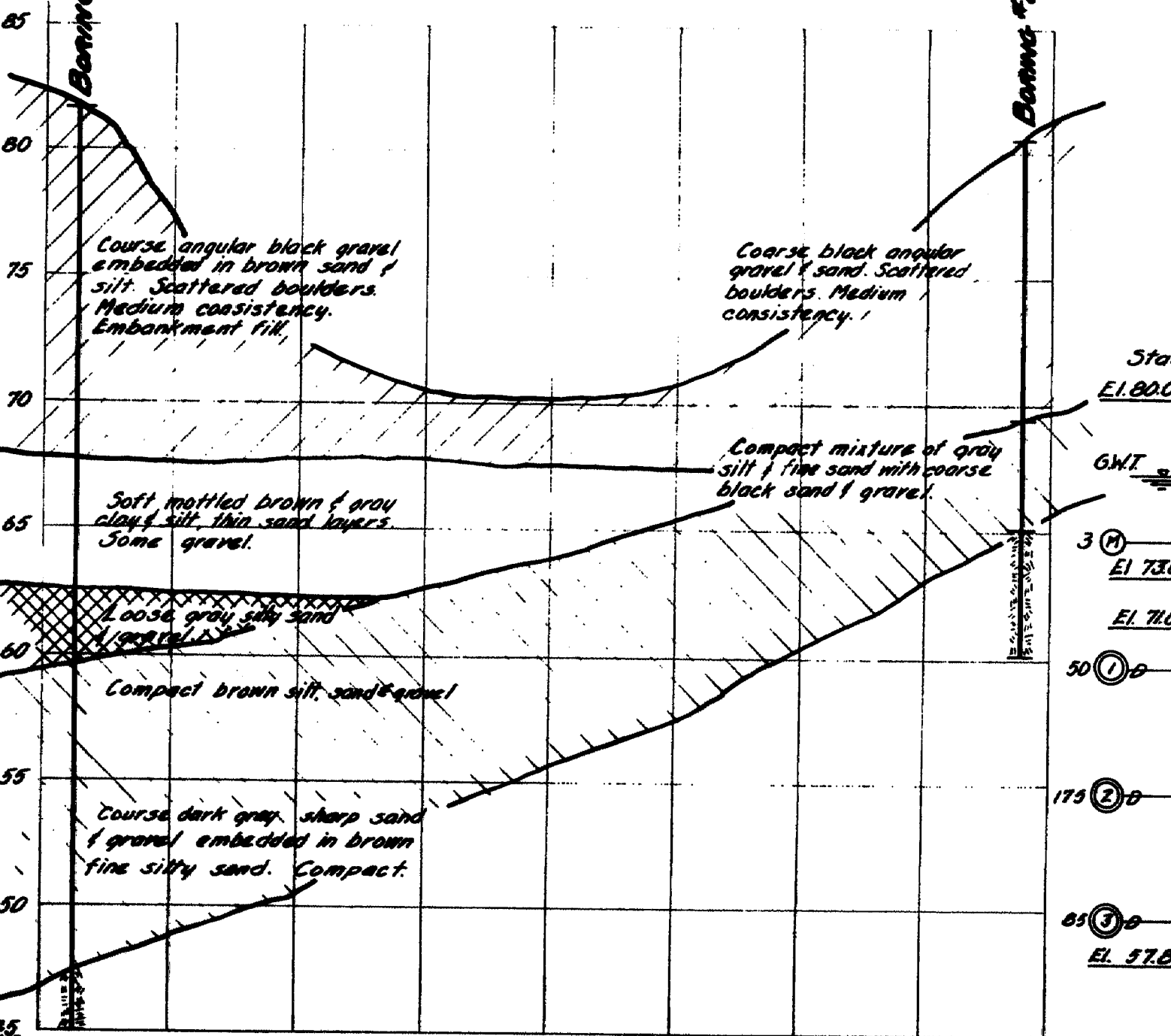
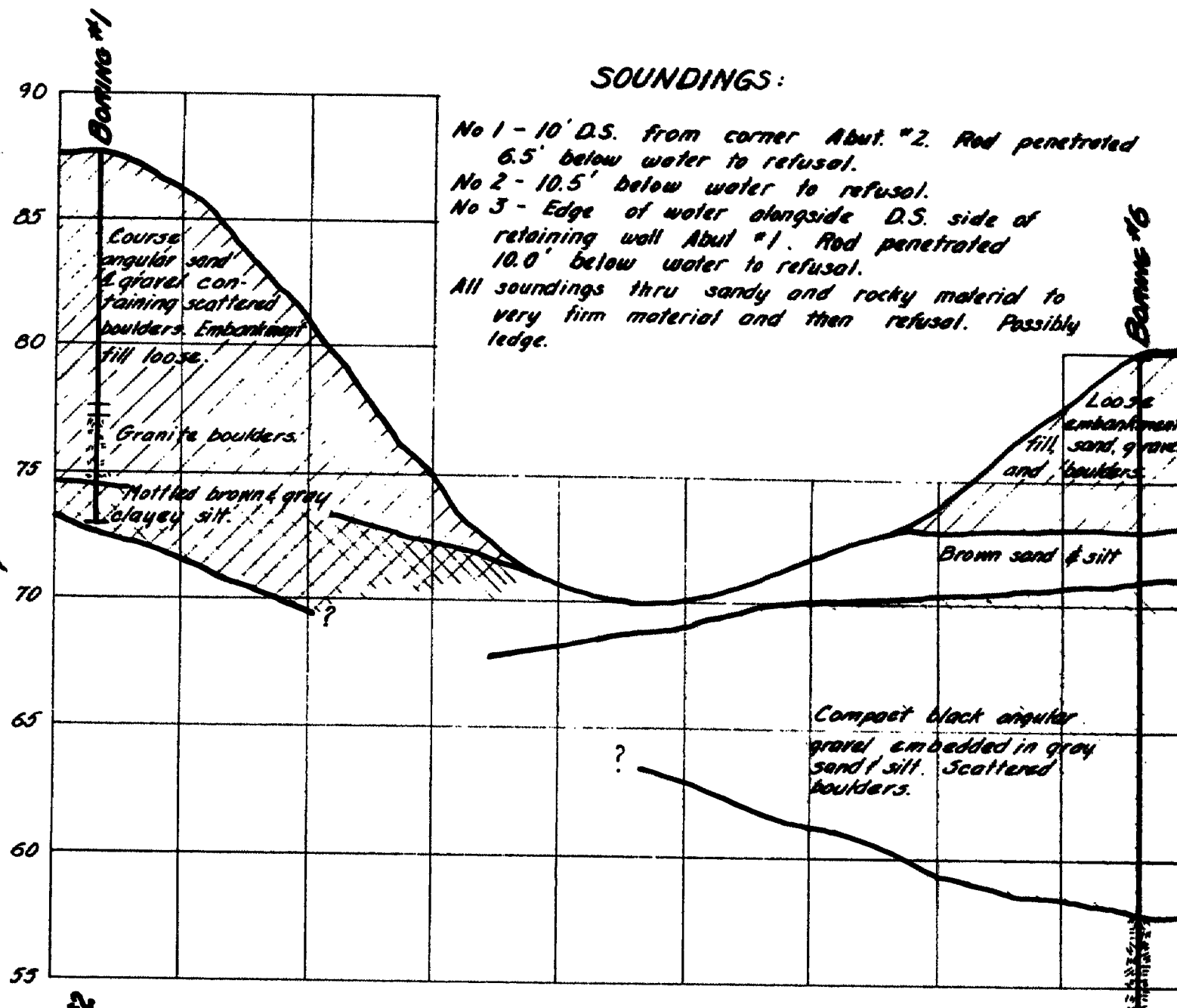
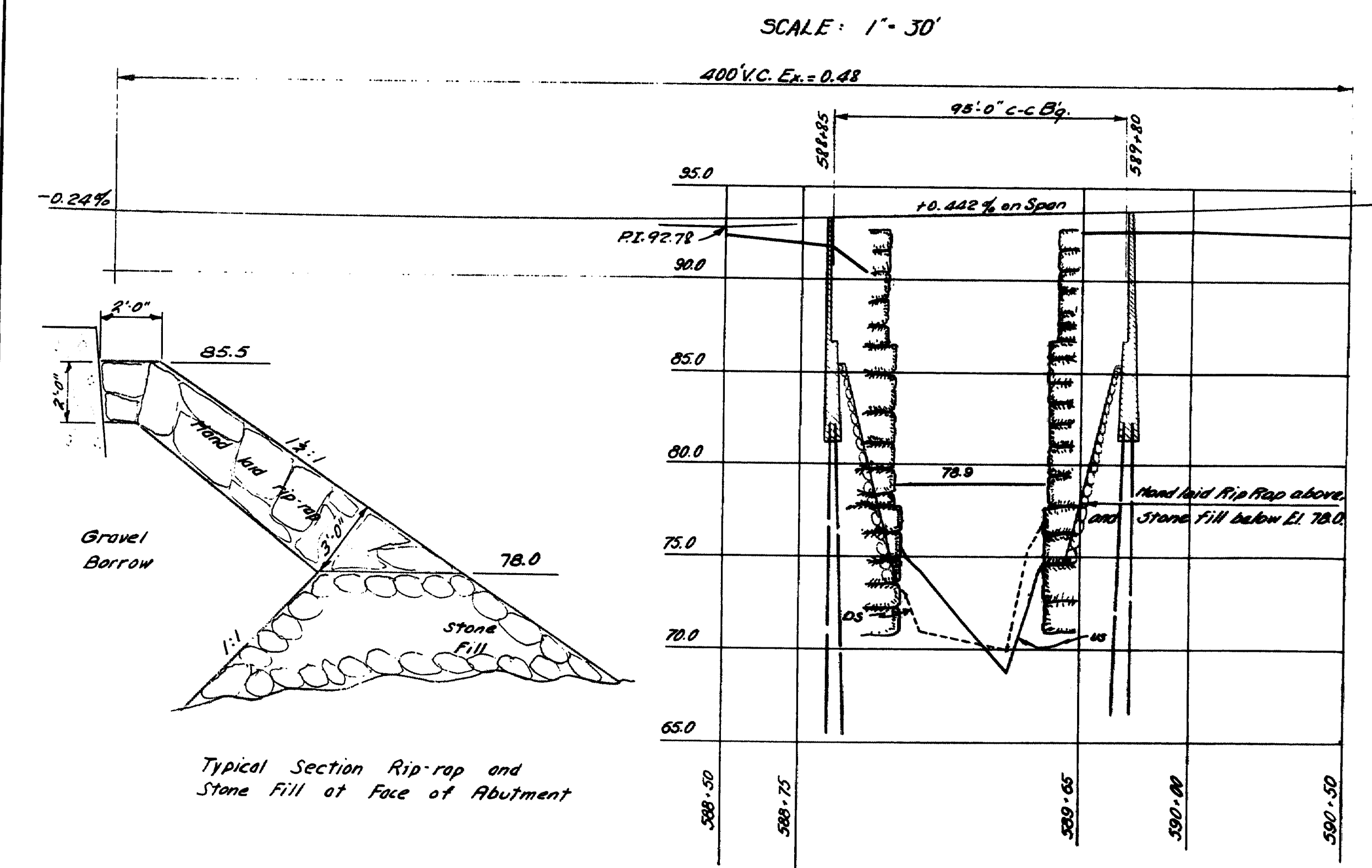
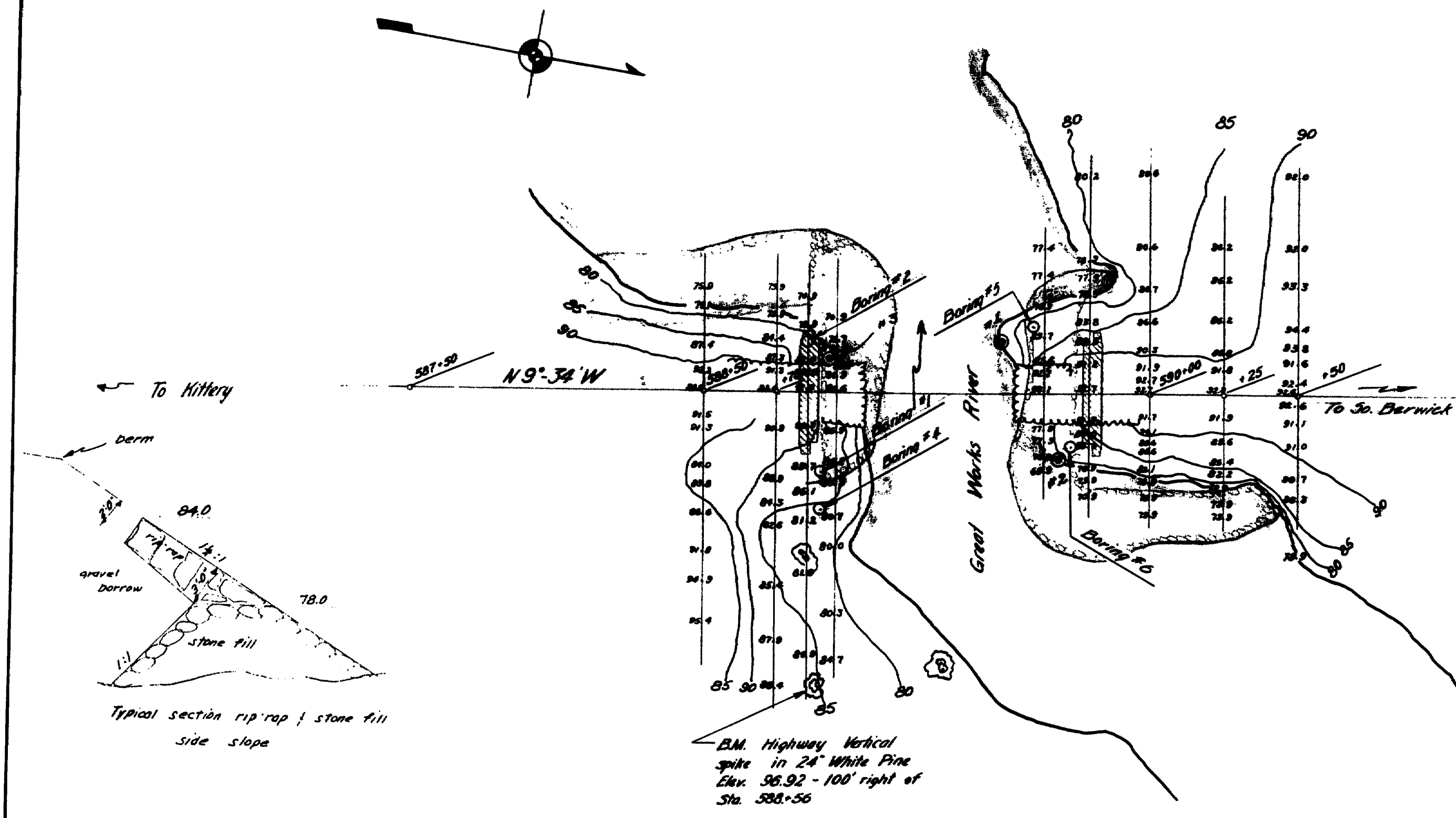
1. Scales as noted on drawings.
2. Casing size as noted on drawings.
3. Ground water table indicated thus:
4. Number of blows of 275# hammer falling 18 inches required to drive extra heavy casing one foot.
5. Location and designation of "dry" samples taken in 5/16 sampler #290's.
6. Location and designation of "dry" samples taken in 2" O.D. 18 ga. seamless tubing.
7. Unsuccessful attempts to secure dry sample.
8. Number of blows of 275# hammer falling 15" required to drive sampling spoon or seamless tubing one foot.
9. Refusal of drill rods or casing indicated thus:
10. Recovery of rock core by size "E" diamond bit.

### NOTES:

EXISTING SUPERSTRUCTURE - Removed  
EXISTING SUBSTRUCTURE - Split granite well laid in mortar. Good condition.  
STREAM - Backwater from dam about 1000' downstream. Extreme highwater 83.62.  
FOUNDATION - See soundings.  
APPROACHES - Former railroad bed. Right side of road at Sta. 588+95 is washed out.

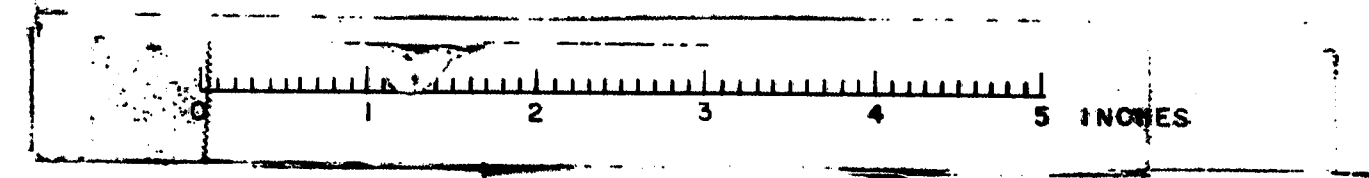
### SOUNDINGS:

No 1 - 10' D.S. from corner Abut. #2. Red penetrated 6.5' below water to refusal.  
No 2 - 10.5' below water to refusal.  
No 3 - Edge of water alongside D.S. side of retaining wall Abut. #1. Red penetrated 10.0' below water to refusal.  
All soundings thru sandy and rocky material to very firm material and then refusal. Possibly ledge.



SURVEY - BLAKE  
PLOT & TRACE - KETNER  
BRIDGE - 5810  
STATE HIGHWAY COMMISSION  
BRIDGE DIVISION  
**GREAT WORKS RIVER  
BRIDGE**  
IN THE TOWN OF  
**SOUTH BERWICK  
YORK COUNTY**  
SURVEY PLAN  
SHEET 1 OF 5  
AUGUSTA, MAINE  
DEC. 1953

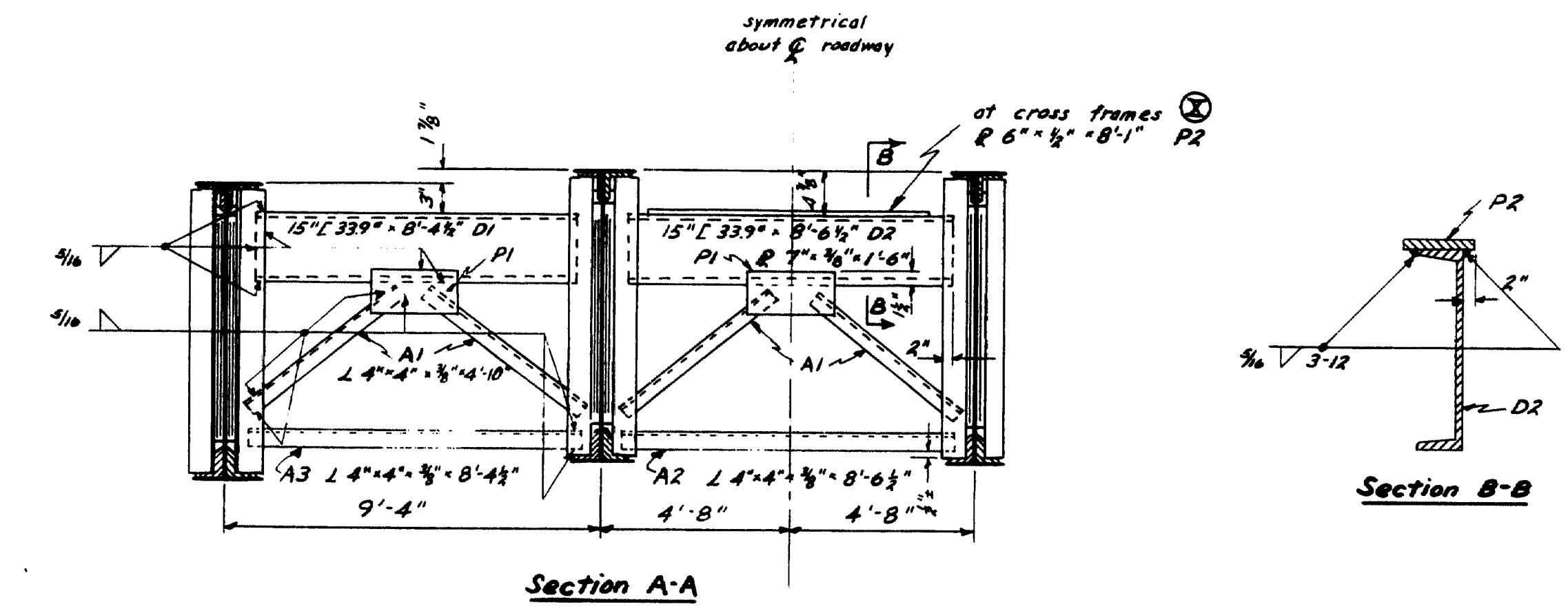
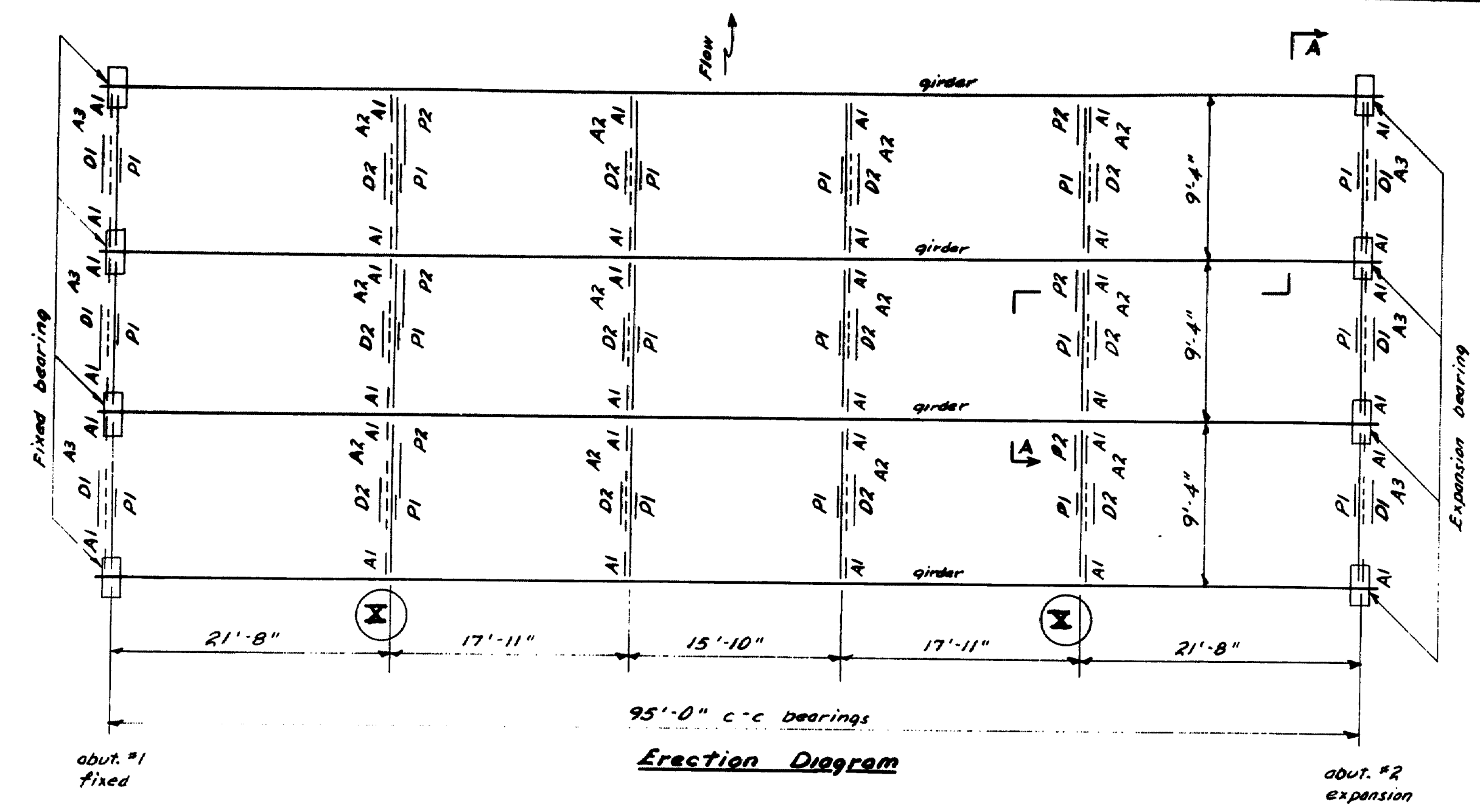
M-635



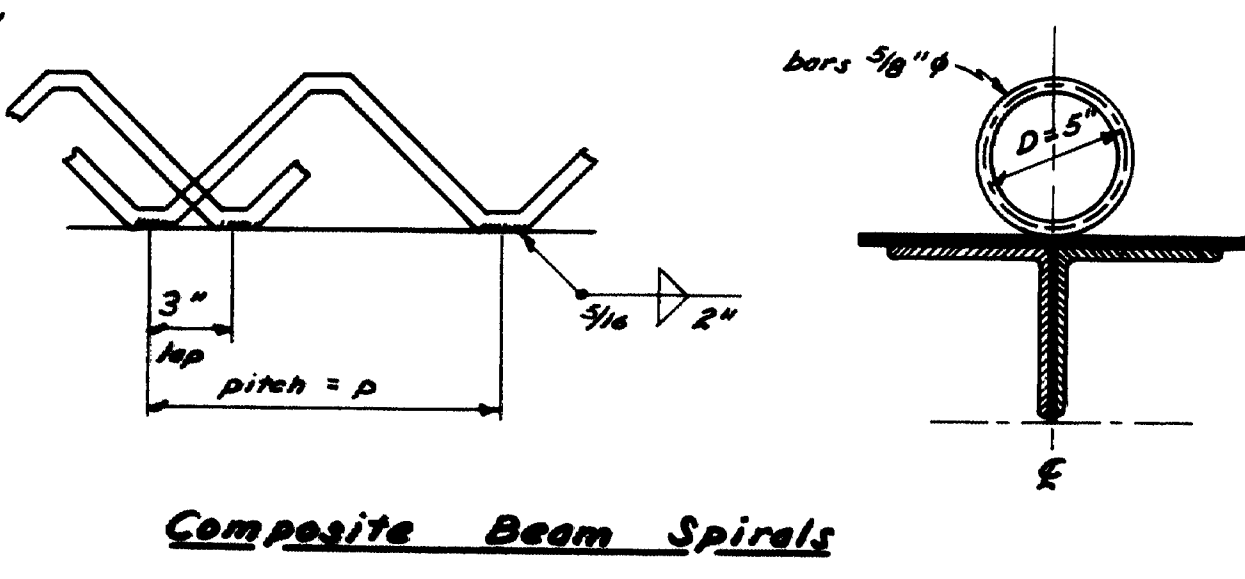
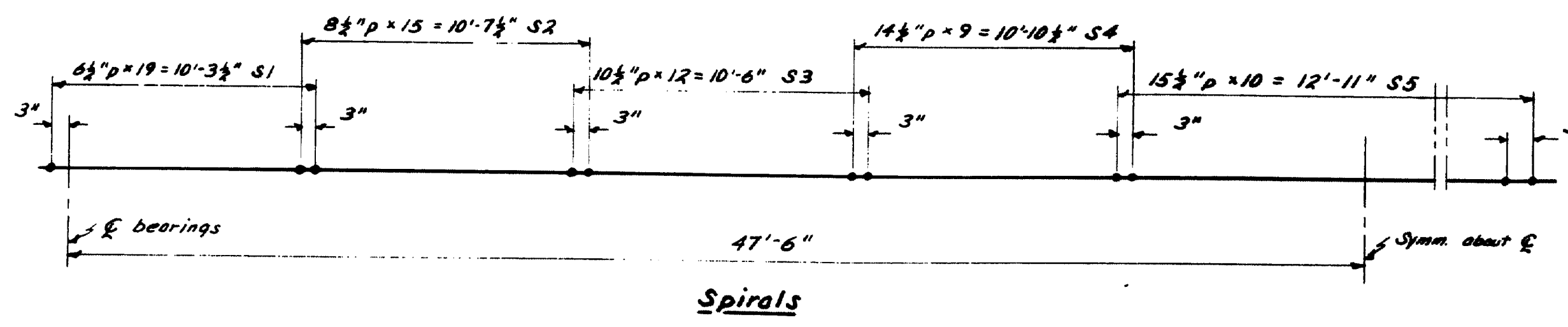








| Structural Steel                         |                              |      |                              |
|--|------------------------------|------|------------------------------|
| Mark                                     | Material                     | Qty. | Remarks                      |
| G  | as detailed                  | 4    | girders                      |
| D1                                       | 15" L 33.9 x 8'-4 1/2"       | 6    | end diaphragms               |
| D2                                       | 15" L 33.9 x 8'-6 3/4"       | 12   | interior diaphragms          |
| P1                                       | R 7" x 3/8" x 1'-6"          | 18   | diaphragm plates             |
| P2                                       | R 6" x 1/2" x 8'-1"          | 6    | diap. plates at const. joint |
| P3                                       | R 6" x 1/2" x 0'-9"          | 6    | exp. joint conn. plates      |
| A1                                       | L 4" x 4" x 3/8" x 1'-10"    | 36   | diaphragm angles             |
| A2                                       | L 4" x 4" x 3/8" x 8'-6 3/4" | 12   | diaphragm angles             |
| A3                                       | L 4" x 4" x 3/8" x 8'-4 1/4" | 6    | diaphragm angles             |
| exp. joint L 5" x 3 1/2" x 1/2" x 15'-0" |                              |      |                              |
|  | R 1 1/2" x 1/2" x 0'-10"     | 64   | end joints                   |
| expansion pedestal                       |                              |      |                              |
|  | top plates                   | 4    | as detailed                  |
|  | masonry plates               | 4    | "                            |
|  | rockers                      | 4    | "                            |
|  | pin, washer & cotter         | 4    | "                            |
|  | anchor bolts, nuts, washers  | 8    | "                            |
| fixed pedestal                           |                              |      |                              |
|  | top plates                   | 4    | as detailed                  |
|  | masonry plates               | 4    | "                            |
|  | pedestal plates              | 4    | "                            |
|  | pin, washer & cotter         | 4    | "                            |
|  | anchor bolts, nuts, washers  | 8    | "                            |



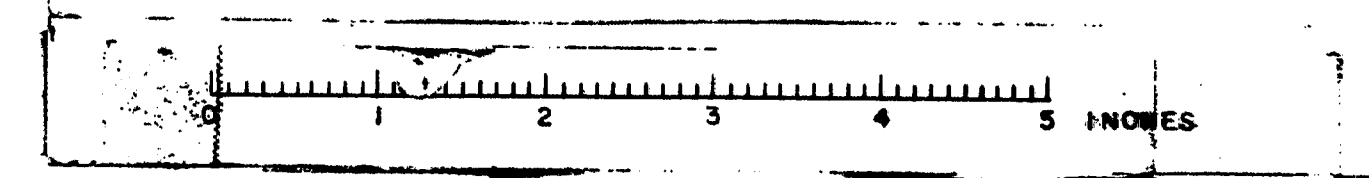
| Spiral Data |     |        |
|-------------|-----|--------|
| Section     | No. | Req'd. |
| S1          | 8   |        |
| S2          | 8   |        |
| S3          | 8   |        |
| S4          | 8   |        |
| S5          | 4   |        |

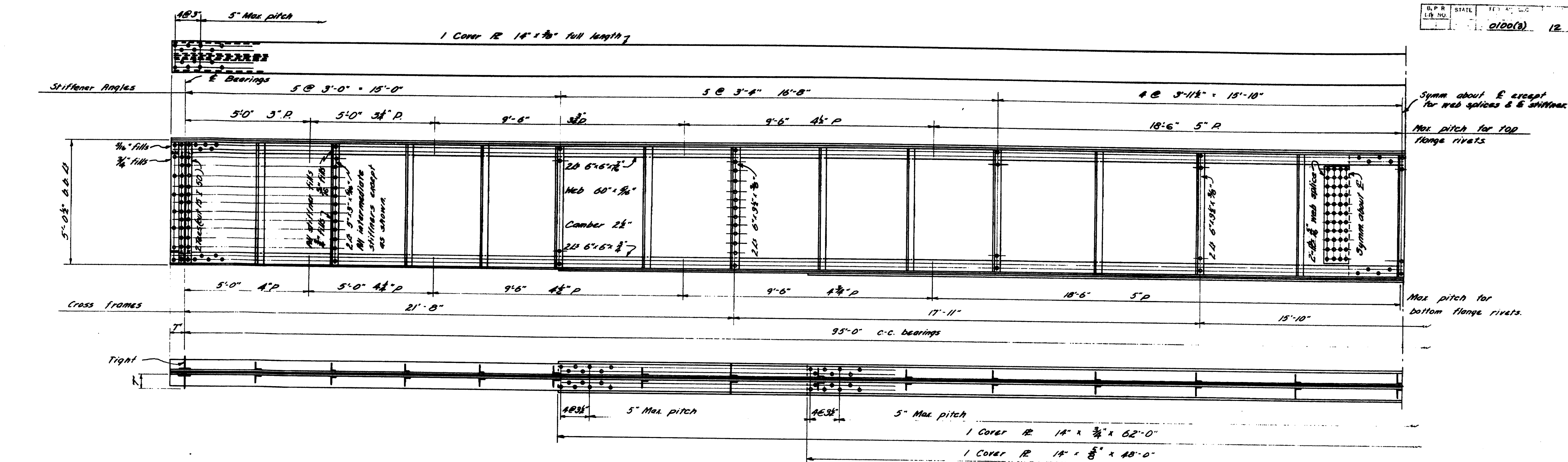
Note: all bars 3/8" phi and D=5"

DESIGN - ALLEN, BROOKS  
DETAIL - MOLLICONE  
CHECK - 12/22

BRIDGE - 5610  
STATE HIGHWAY COMMISSION  
BRIDGE DIVISION  
**GREAT WORKS RIVER BRIDGE**  
IN THE TOWN OF  
**SOUTH BERWICK**  
**YORK COUNTY**  
STRUCTURAL STEEL, SPIRALS  
SHEET 4 OF 5 AUGUSTA, MAINE DEC. 1954

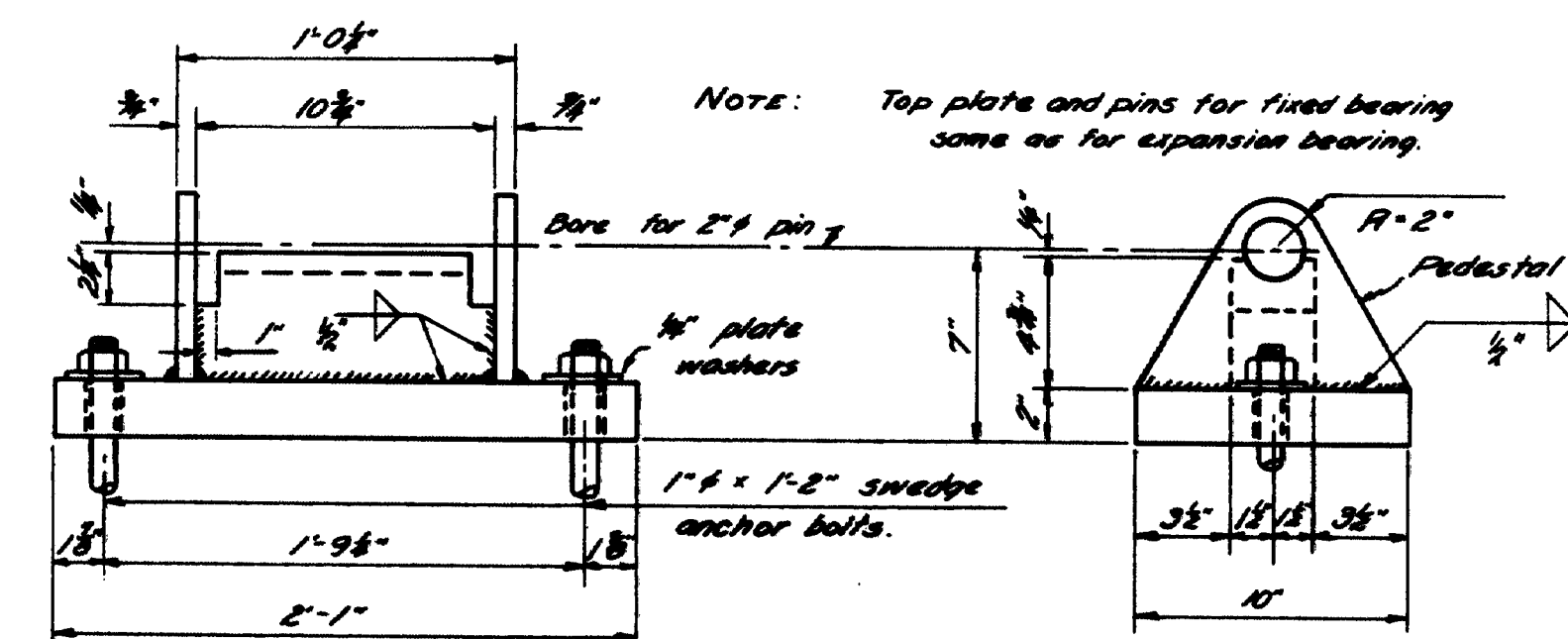
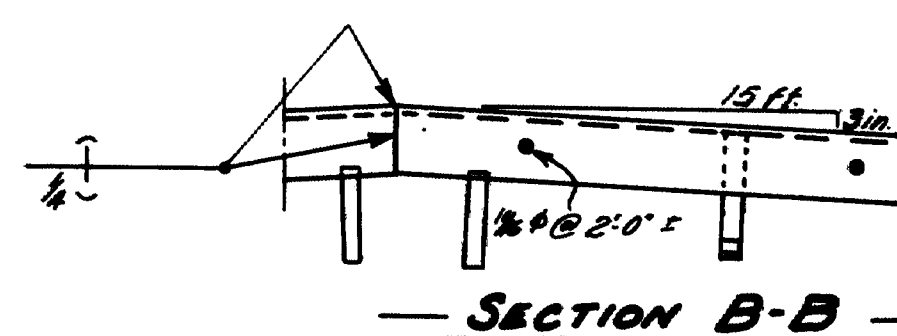
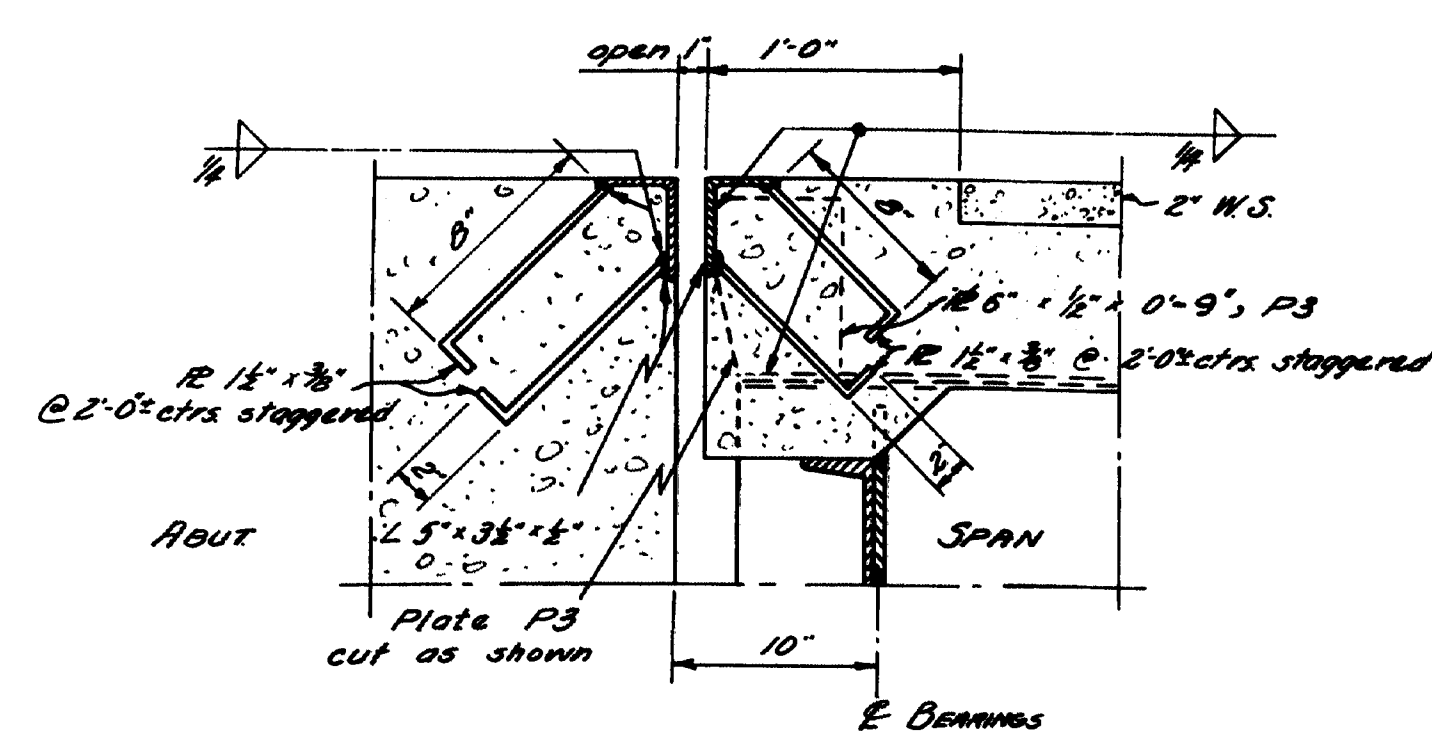
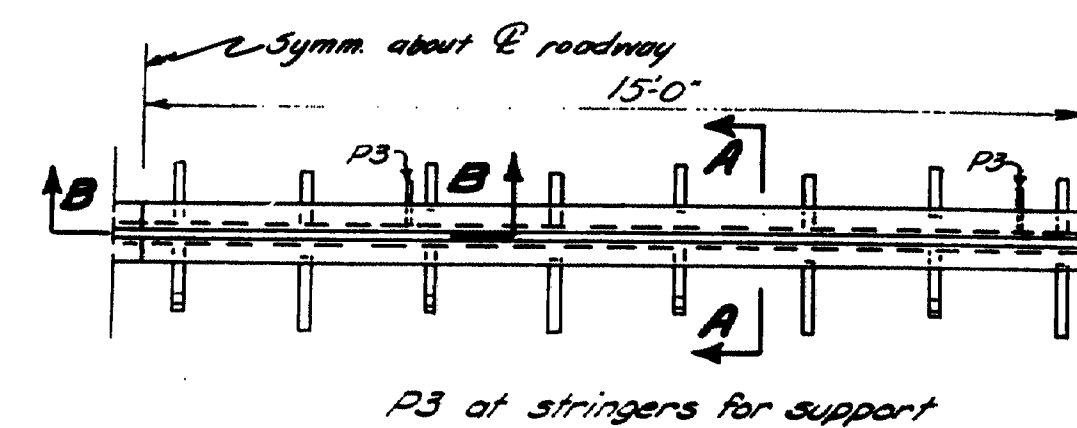
M-638





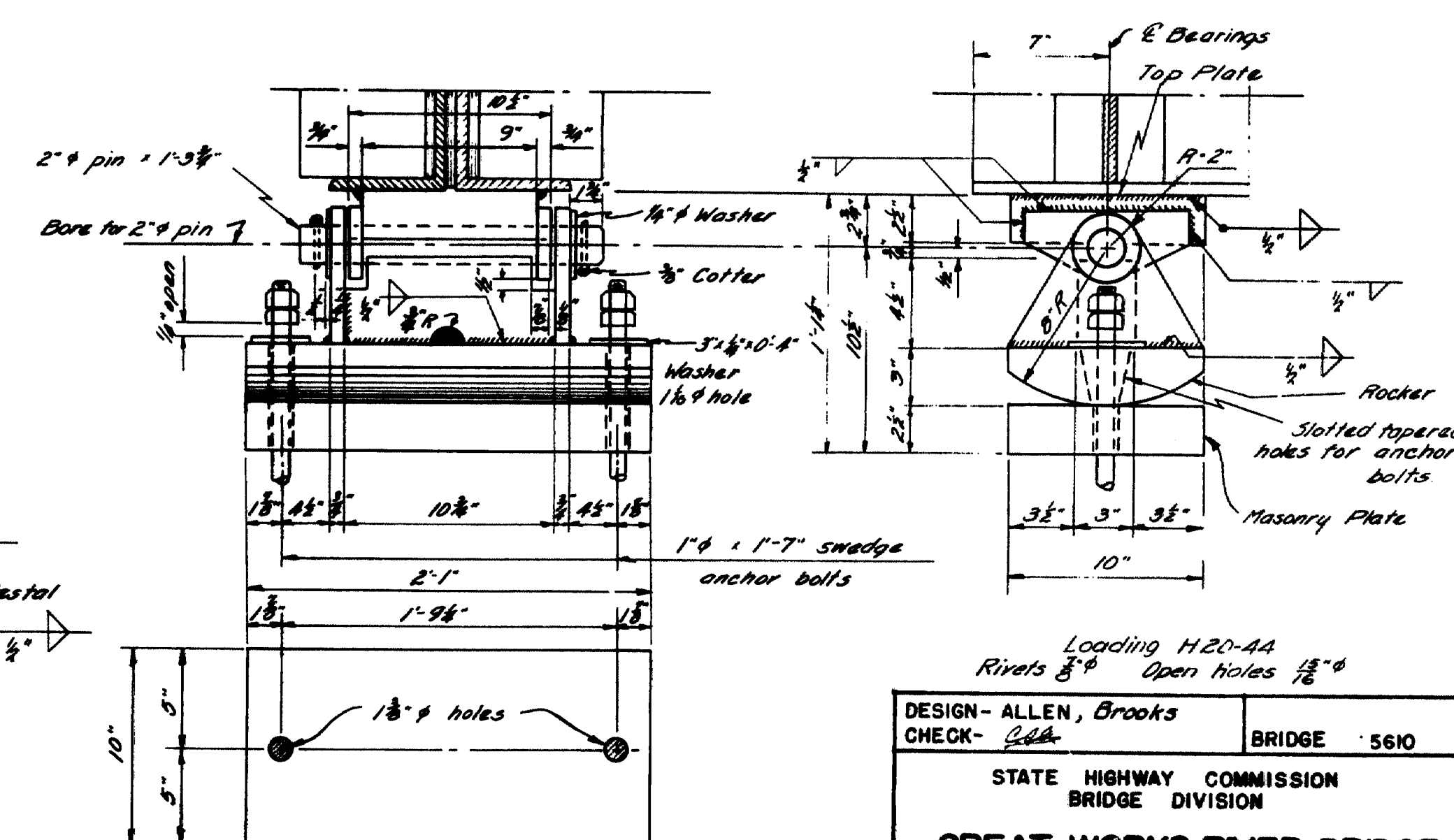
Specifications: State of Maine, State Highway Commission,  
Standard Specifications, Revision of May, 1953.

Design & Details : A.A.S.H.O. Standard Specifications for Highway  
Bridges, 1953.



### FIXED BEARING

**REQUIRED**  
4- Top Plates  
4- Pedestals  
4- Pins  
8- Anchor Bolts 1"  $\phi$  x 1'-2"



### EXPANSION BEARING

*REQUIRED*  
4 - Top Plates  
4 - Masonry Plates  
4 - Pins  
8 - Anchor Bolts 1" x 1'-7"  
4 - Rockers

|   |             |
|---|-------------|
| <i>Loading H20-44</i><br><i>Rivets 3"φ Open Holes 1 1/2"φ</i>   |             |
| CHECK- <i>Allen, Brooks</i>   | BRIDGE 5610 |
| STATE HIGHWAY COMMISSION<br>BRIDGE DIVISION<br><br><b>GREAT WORKS RIVER BRIDGE</b><br><br>IN THE TOWN OF<br><br><b>SOUTH BERWICK</b><br><br><b>YORK COUNTY</b><br>STRUCTURAL STEEL<br>SHEET 5 OF 5      AUGUSTA, MAINE      SEP. 1954 |             |

M-637

**M-637**