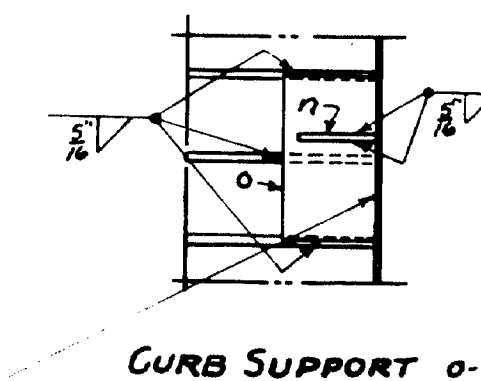
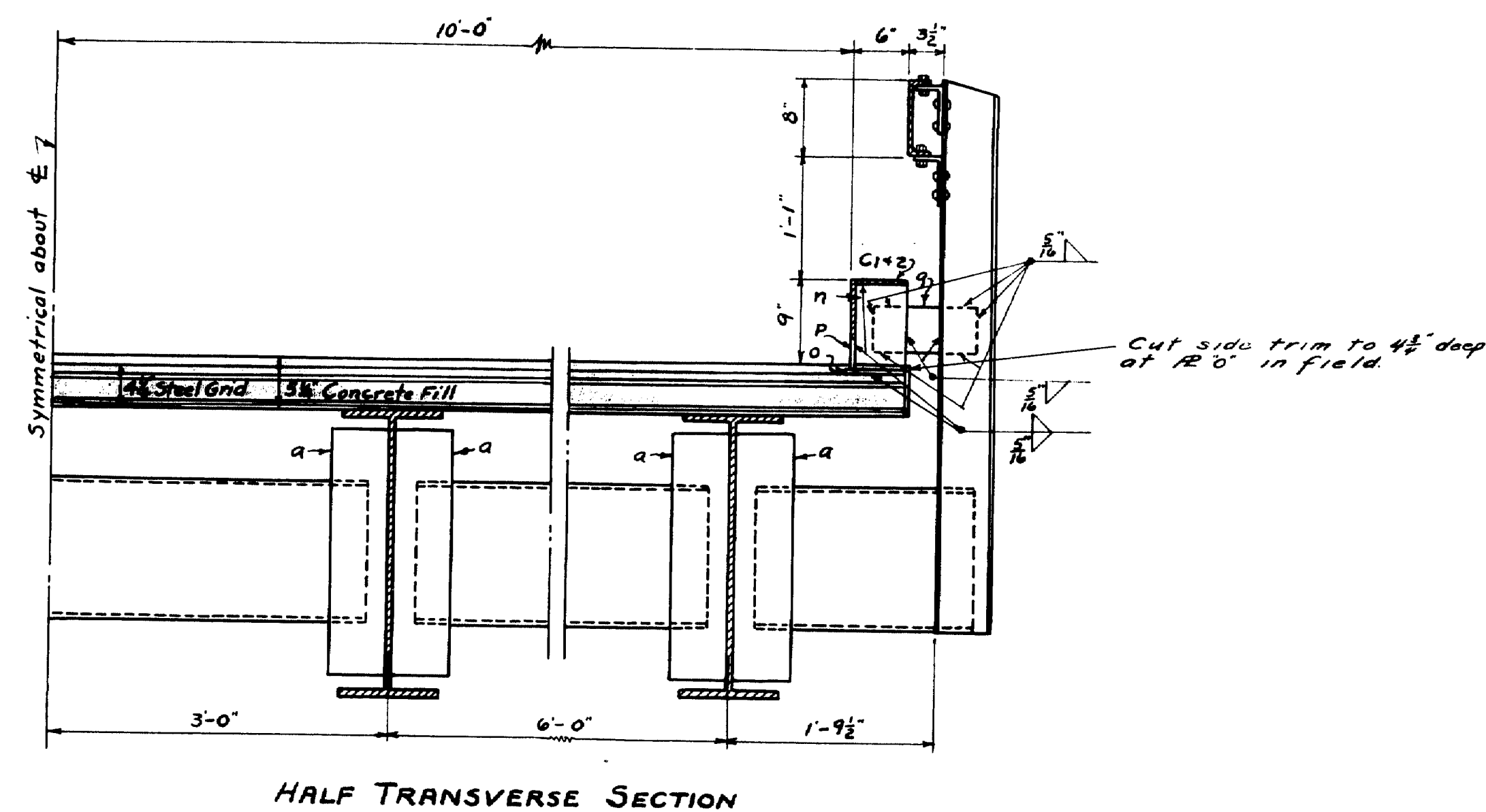
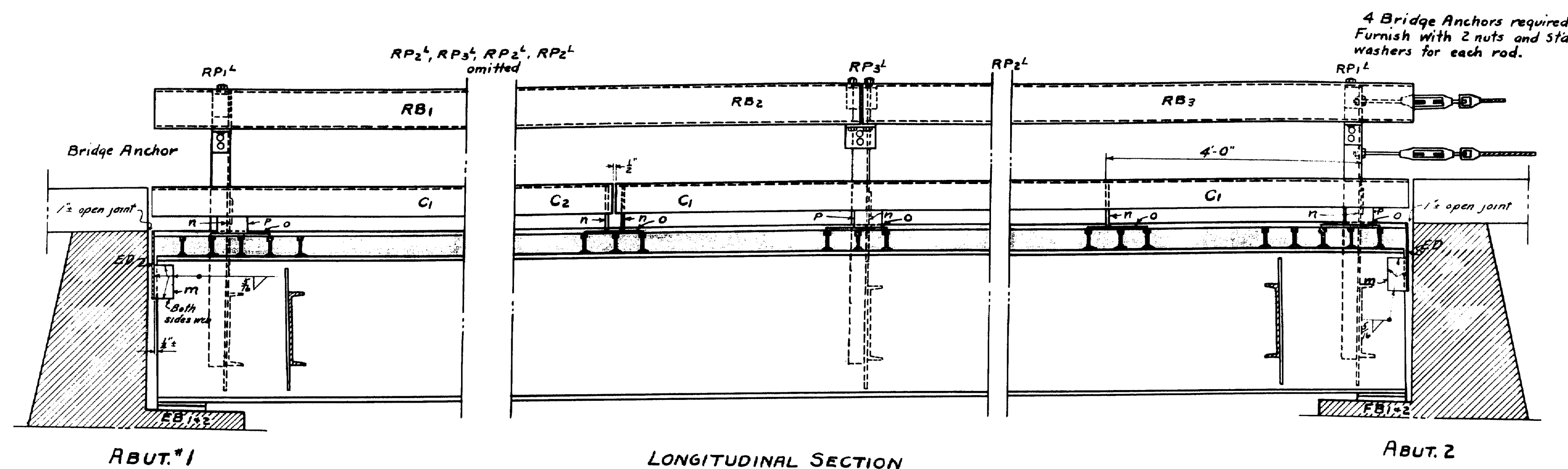


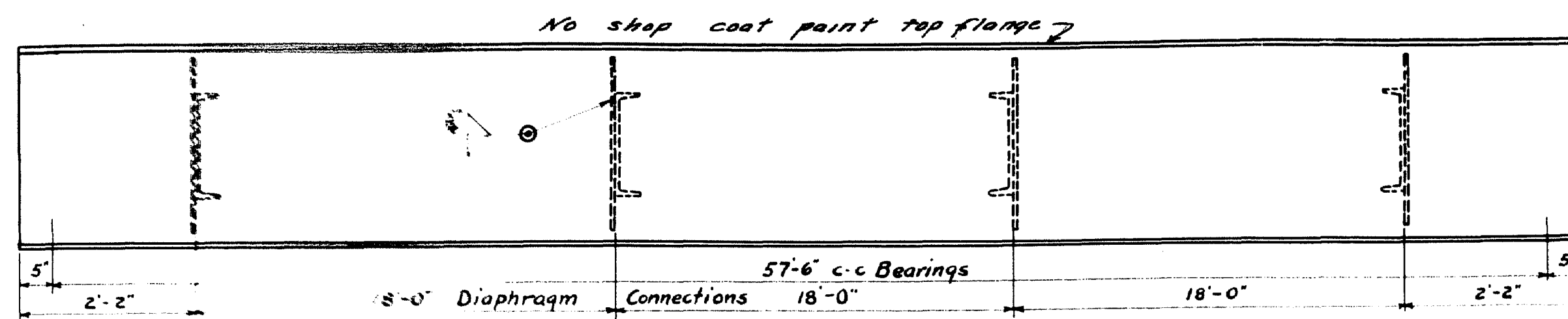
PLAN G.L.J. BRIDGE 3976
 J.L. FERGUSON.
 MAINE HIGHWAY COMMISSION
 BRIDGE DIVISION
DURGIN BRIDGE
 OVER
SABATTUS RIVER
 IN THE TOWN OF
LISBON
ANDROSCOGGIN COUNTY
 APPROACH SECTIONS
 SHEET 2 OF 5, AUGUSTA, MAINE APRIL 1947



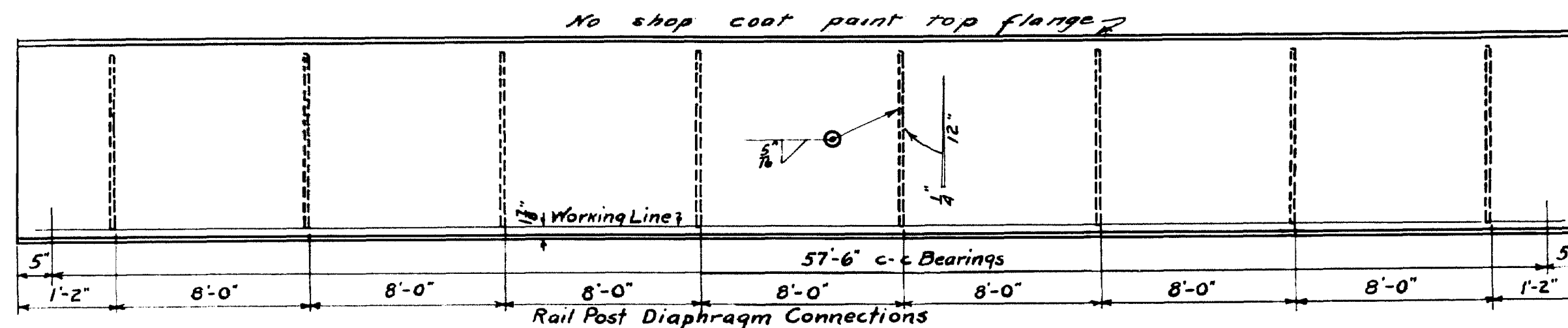
Place plate "n" at both ends of C₁ & C₂ at all rail posts and at mid-point between posts except as noted for C₁₋₂. Place plate "n" symmetrically on three (3) beams of grid floor, (nearest to the desired location of "n") so that the ends of plate "a" may be welded to the tops of the said beams. At all rail posts, plate "p" is to be placed under the curb angle across the end of plate "n" and welded to both "a" and "n".

DESIGN - ALLEN	BRIDGE - 3976
TRACE - WELCH	
CHECK - G.L.J.	
STATE HIGHWAY COMMISSION BRIDGE DIVISION	
DURGIN BRIDGE	
OVER	
SABATTUS RIVER	
IN THE TOWN OF	
LISBON	
ANDROSCOGGIN COUNTY	
SUPERSTRUCTURE	
SHEET 4 OF 5 AUGUSTA, MAINE APRIL 1947	

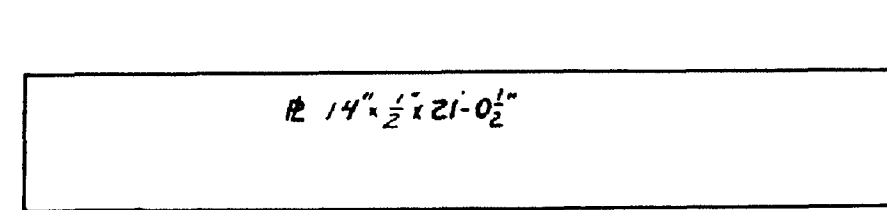
Revised - May 1947 N.W.T.
Checked - P.U.



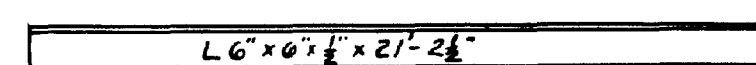
STRINGER S1 30" WF 124" x 58'-4" 2 REQ'D.
SHOWING TYPICAL FIELD CONNECTIONS FOR D1



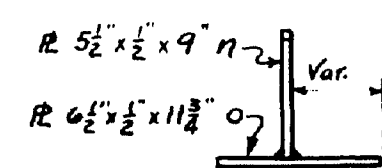
STRINGER S2 30" WF 108" x 58'-4" REQ'D. 2-52
SHOWING TYPICAL FIELD CONNECTIONS FOR RAIL POSTS



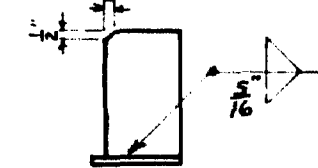
ED 2 Req'd.



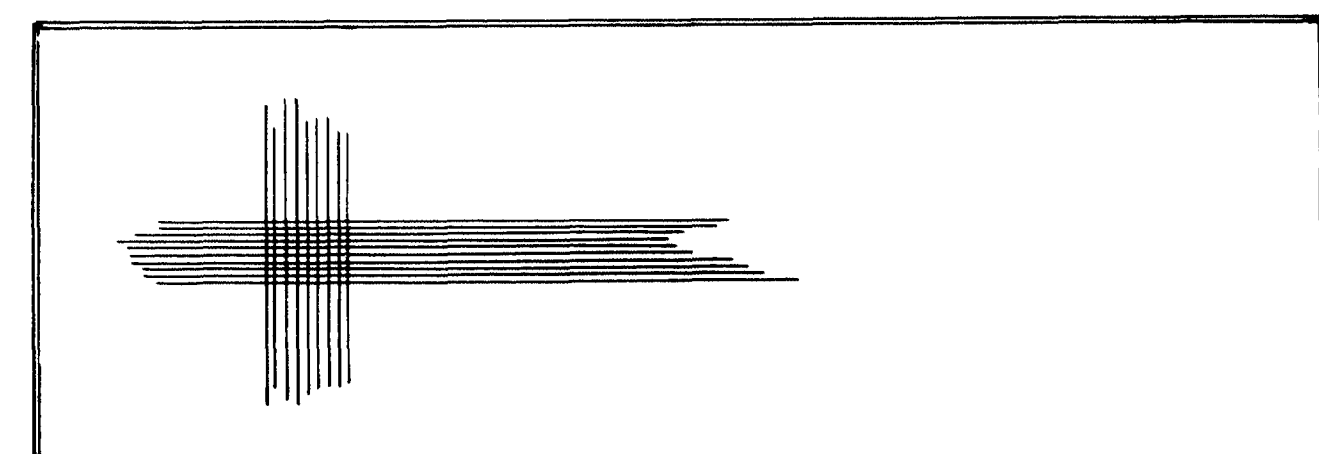
C1. 4 Req'd.



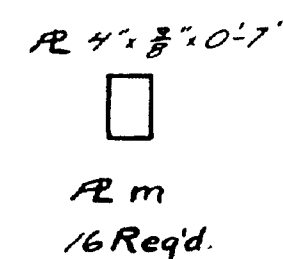
Req'd. 34 n 30-0



R P. 16 Req'd.



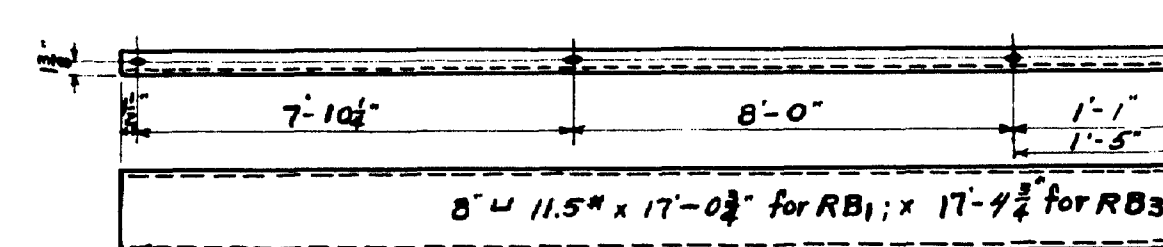
Shop all top and bottom bars on this line for field welding to R's ED.
Furnish form strip for field installation at this point. Tack to ED in field.



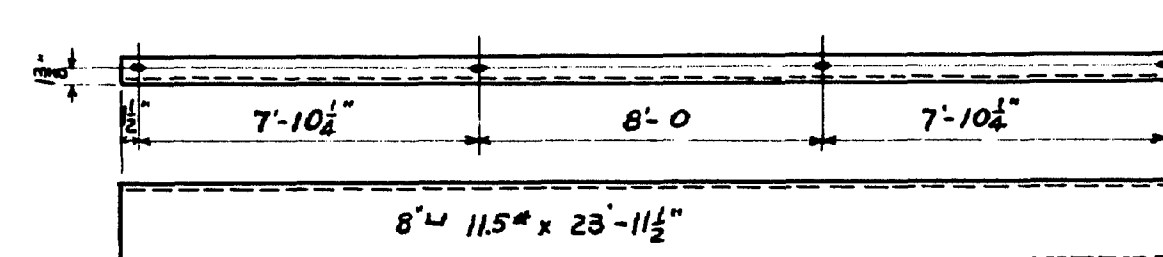
ED 2 Req'd.



C2. 2 Req'd.



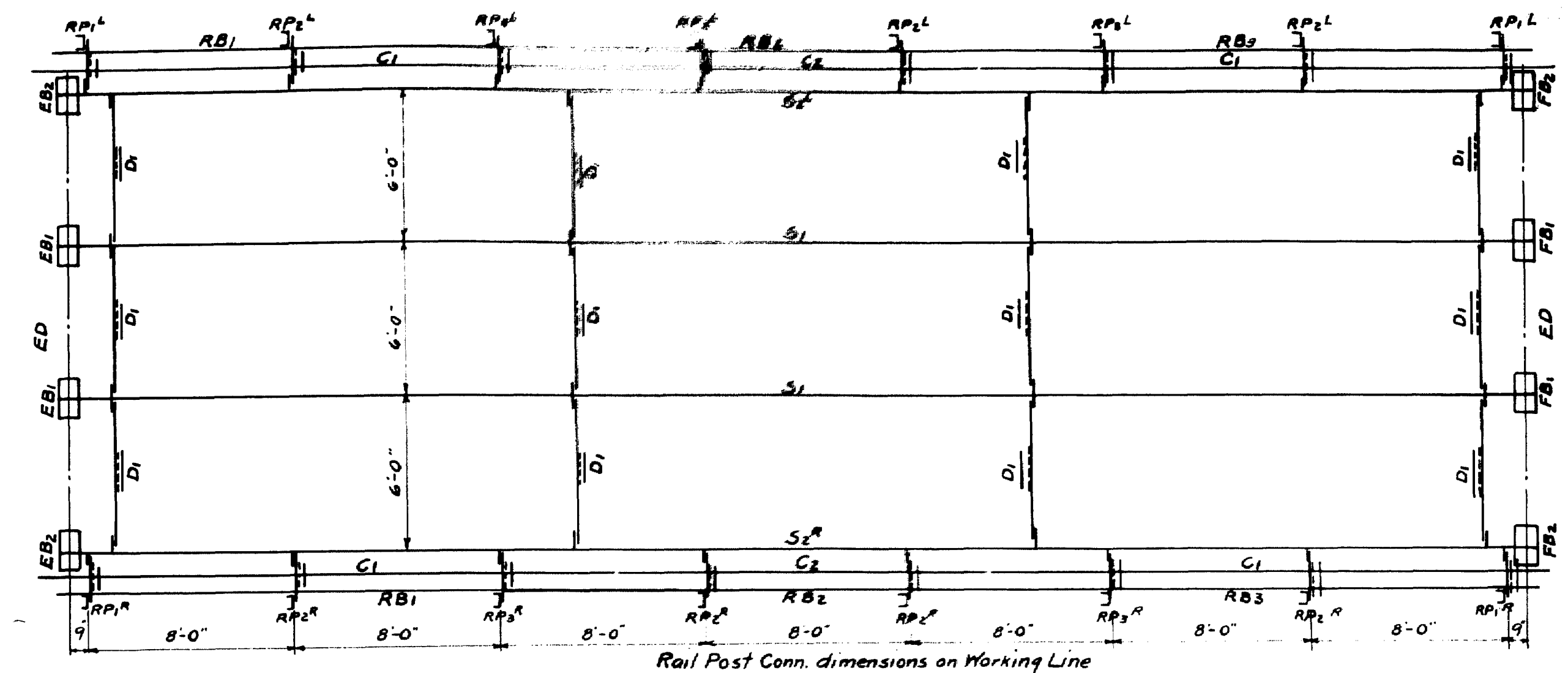
RB1, 2-Req'd. RB3, 2-Req'd.



RB2, 2 Req'd.
Req'd. 40 - 2 1/2" Bolts, Hex. Hd. + Nuts

FLOORING:-
4 1/2" Concrete-filled Steel Grid Flooring (1229 Sq. ft. required) shall conform to the Standard Specifications for Highway Bridges (1944) adopted by the American Association of State Highway Officials.
The bottom and side surfaces of the flooring shall be painted one shop coat of Red Lead and Oil Paint.
Drawings showing complete shop and assembly details shall be submitted by the manufacturer for approval before fabrication is started.

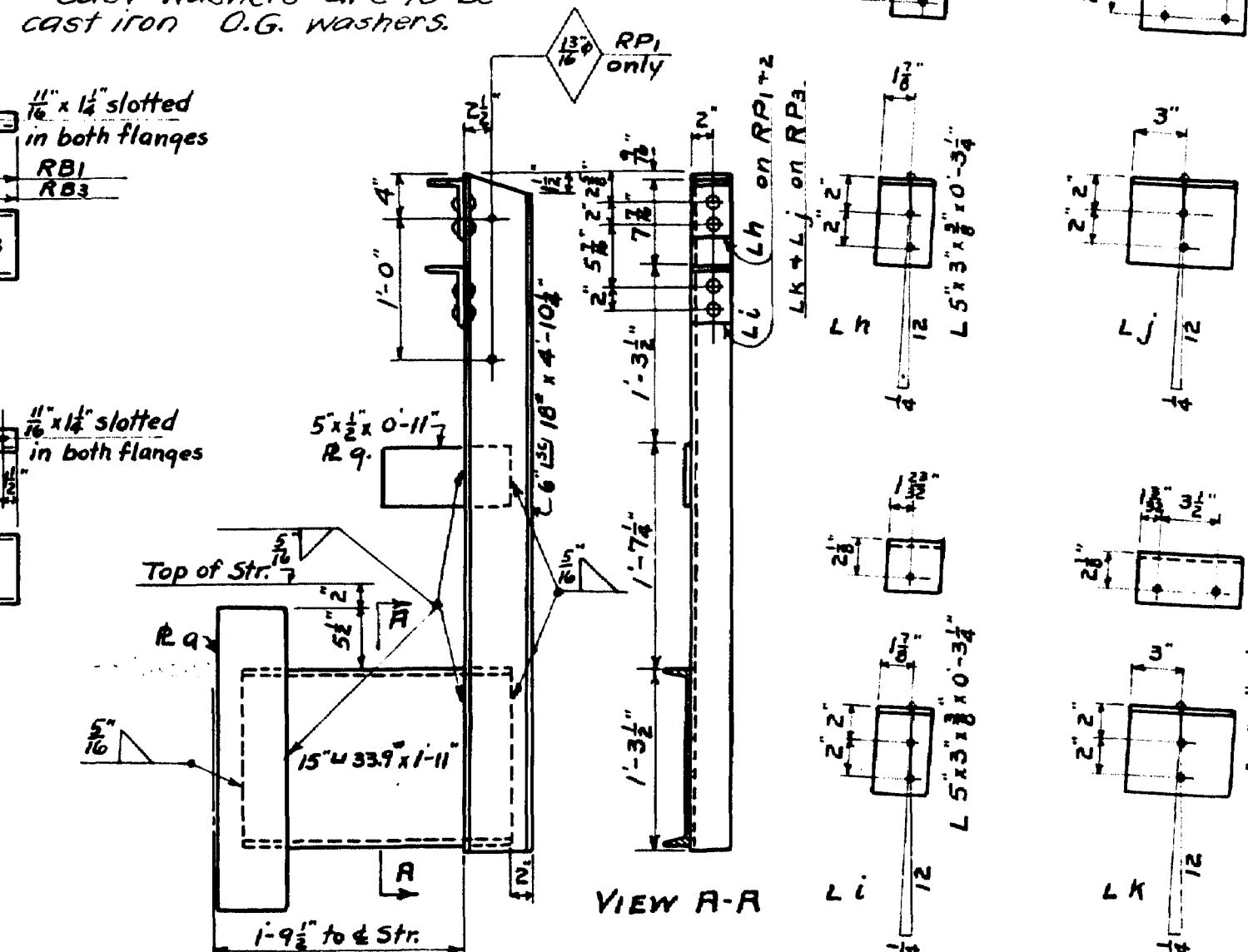
DESIGN LOADING H-15-44



ERECTION DIAGRAM

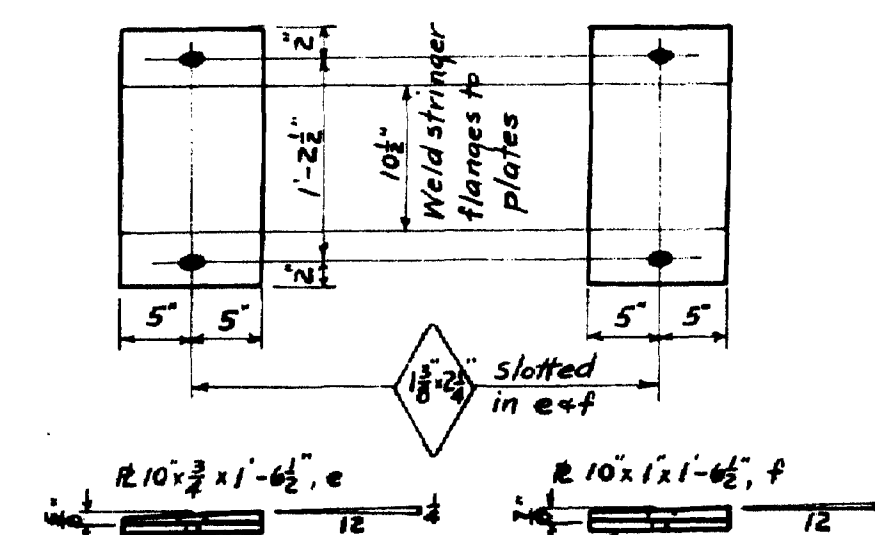
CABLE RAIL POST FITTINGS
Required - 36 Bolts B₂, 12 R₂'s W₂ and 12 Cast Washers for B₂.
Cast washers are to be cast iron O.G. washers.

Std Washer 1 1/4" Hex. Hd. & Nut 1/2" RW 3/8" x 5 1/2"



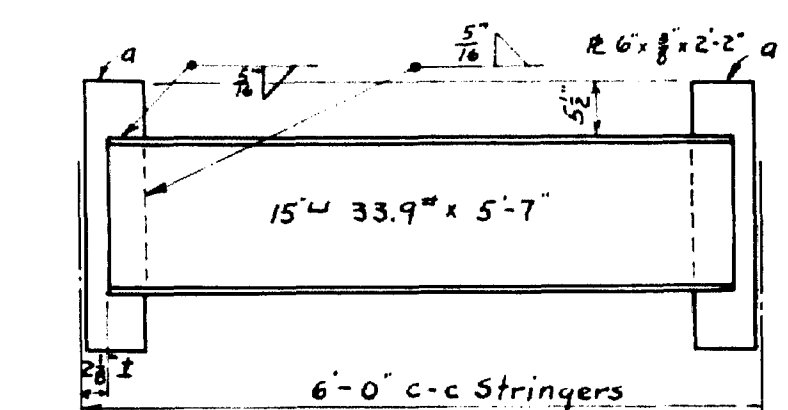
VIEW A-A

RP₁ 2 Req'd. as shown
RP₁ 2 Req'd. opp. hand
RP₂ 4 Req'd. as shown
RP₂ 4 Req'd. opp. hand
RP₃ 2 Req'd. as shown
RP₃ 2 Req'd. opp. hand.

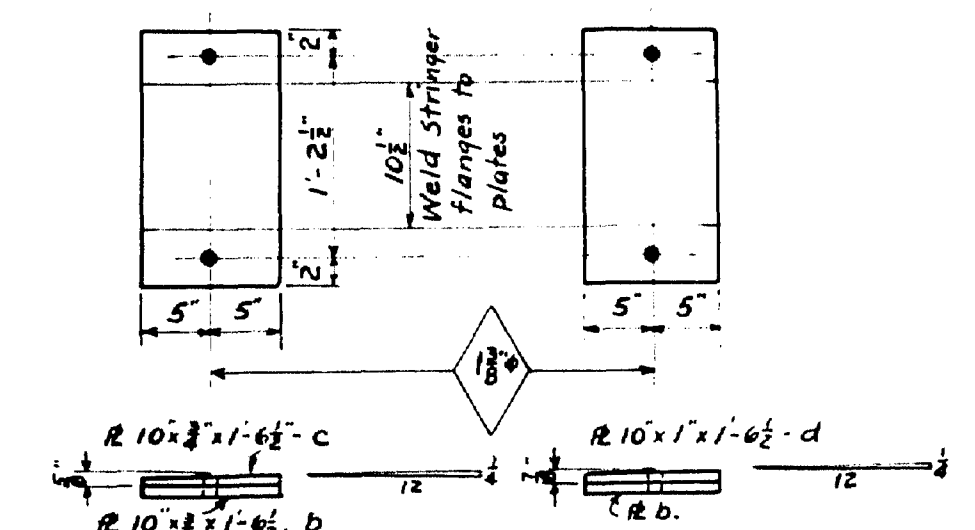


EB1 2 Req'd.

EB2 2 Req'd.

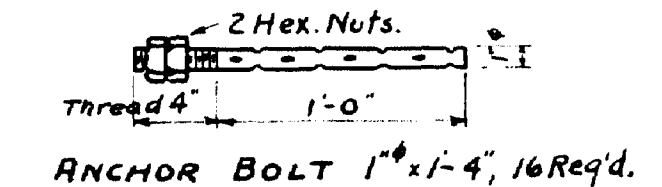


DIAPHRAGM D1, 12 Req'd.



FB1 2 Req'd.

FB2 2 Req'd.



ANCHOR BOLT 1'-0" x 4", 16 Req'd.

STRUCTURAL STEEL
Rivets 5/8"
Open holes 1 1/4" except as noted
Welds 3/8" fillet unless noted
Specifications - Maine State Highway Commission Specifications for Steel Highway Bridges 1945.
Paint - One shop coat Red Lead and Oil, except as noted.

DESIGN - ALLEN
TRACE - WELCH
CHECK - G. L. P.
BRIDGE - 3976
STATE HIGHWAY COMMISSION
BRIDGE DIVISION
DURGIN BRIDGE
OVER
SABATTUS RIVER
IN THE TOWN OF
LISBON
ANDROSCOGGIN COUNTY
STEEL
SHEET 5 OF 5 AUGUSTA, MAINE APRIL 1947