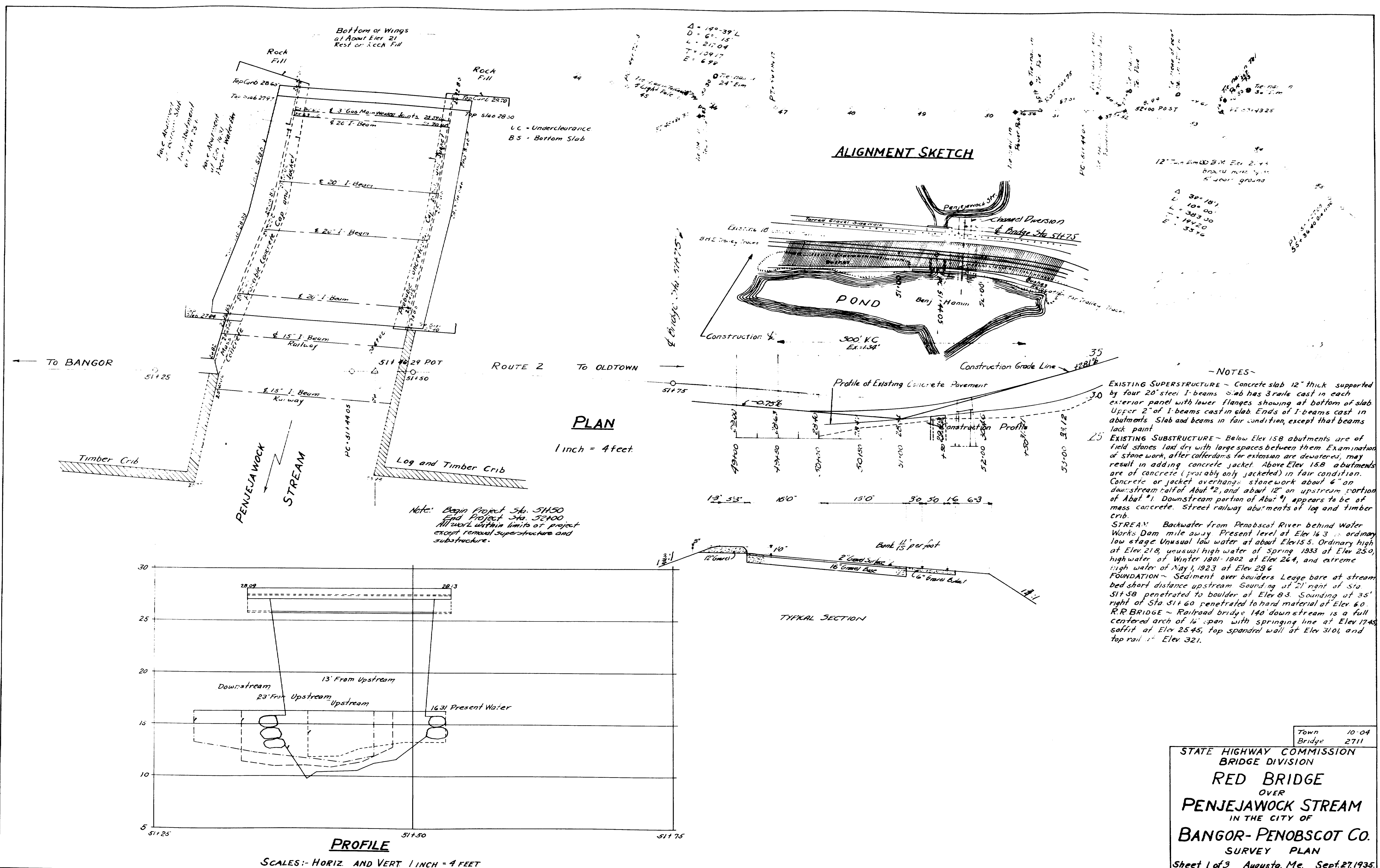


Surveyed by - Beckman, Sept. 17-20, 1935
 Plotted by - Beckman & Cashman

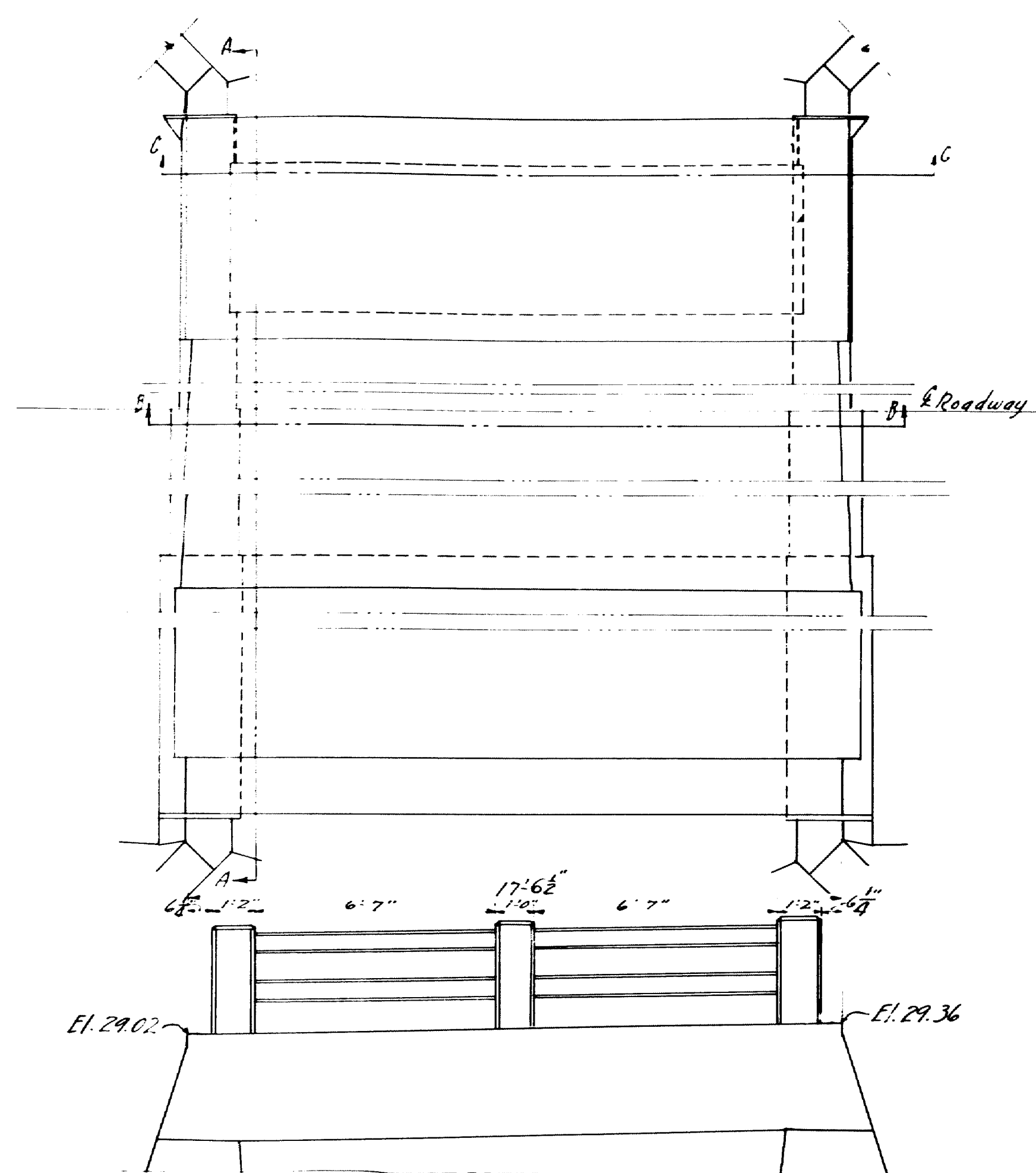


Town 10-04
 Bridge 2711

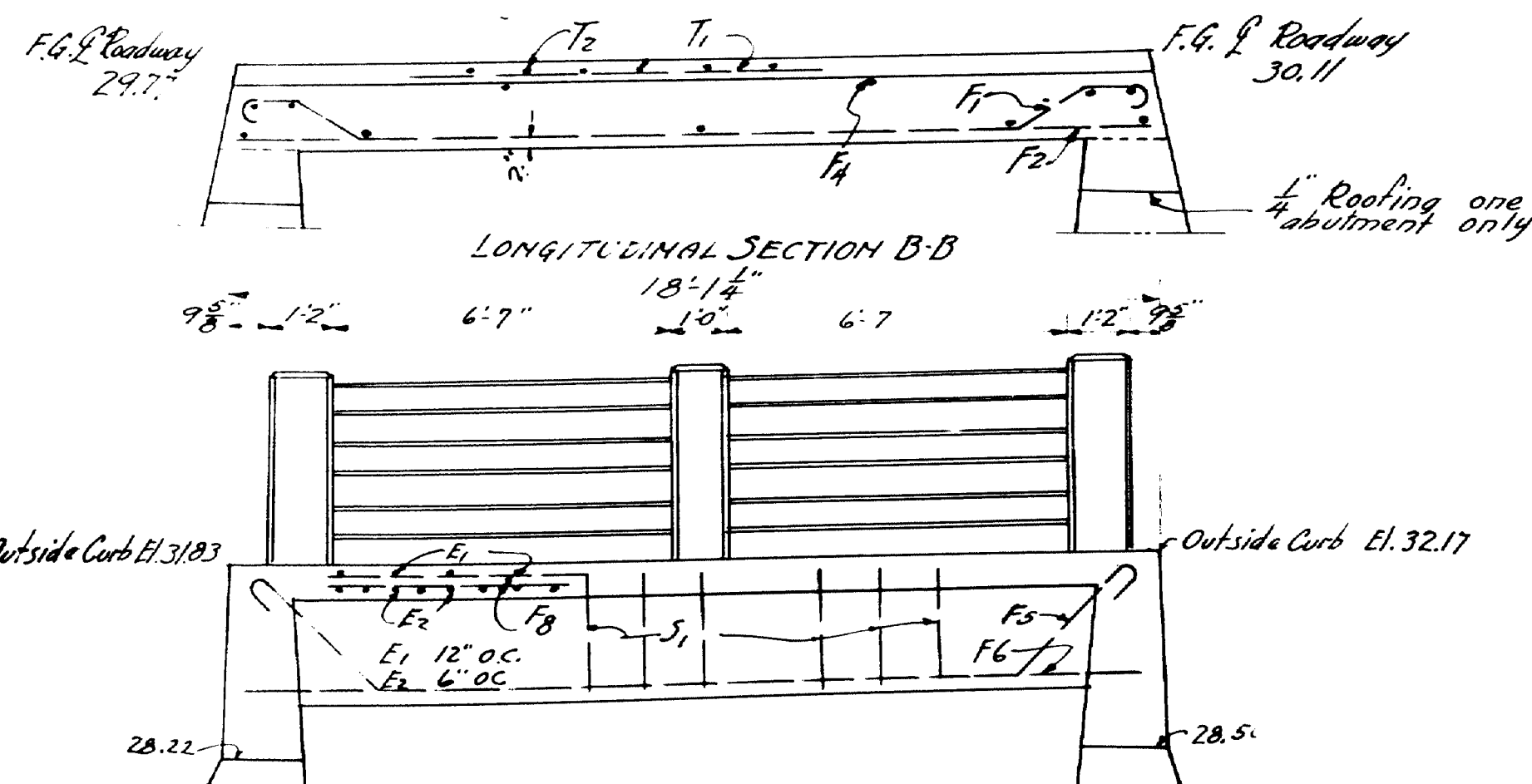
STATE HIGHWAY COMMISSION
 BRIDGE DIVISION

RED BRIDGE
 OVER
 PENJEJAWOCK STREAM
 IN THE CITY OF
 BANGOR-PENOBSCOT CO.
 SURVEY PLAN
 Sheet 1 of 3 Augusta, Me. Sept. 27, 1935

23-164



LONGITUDINAL VIEW D.S. CURB
Variable

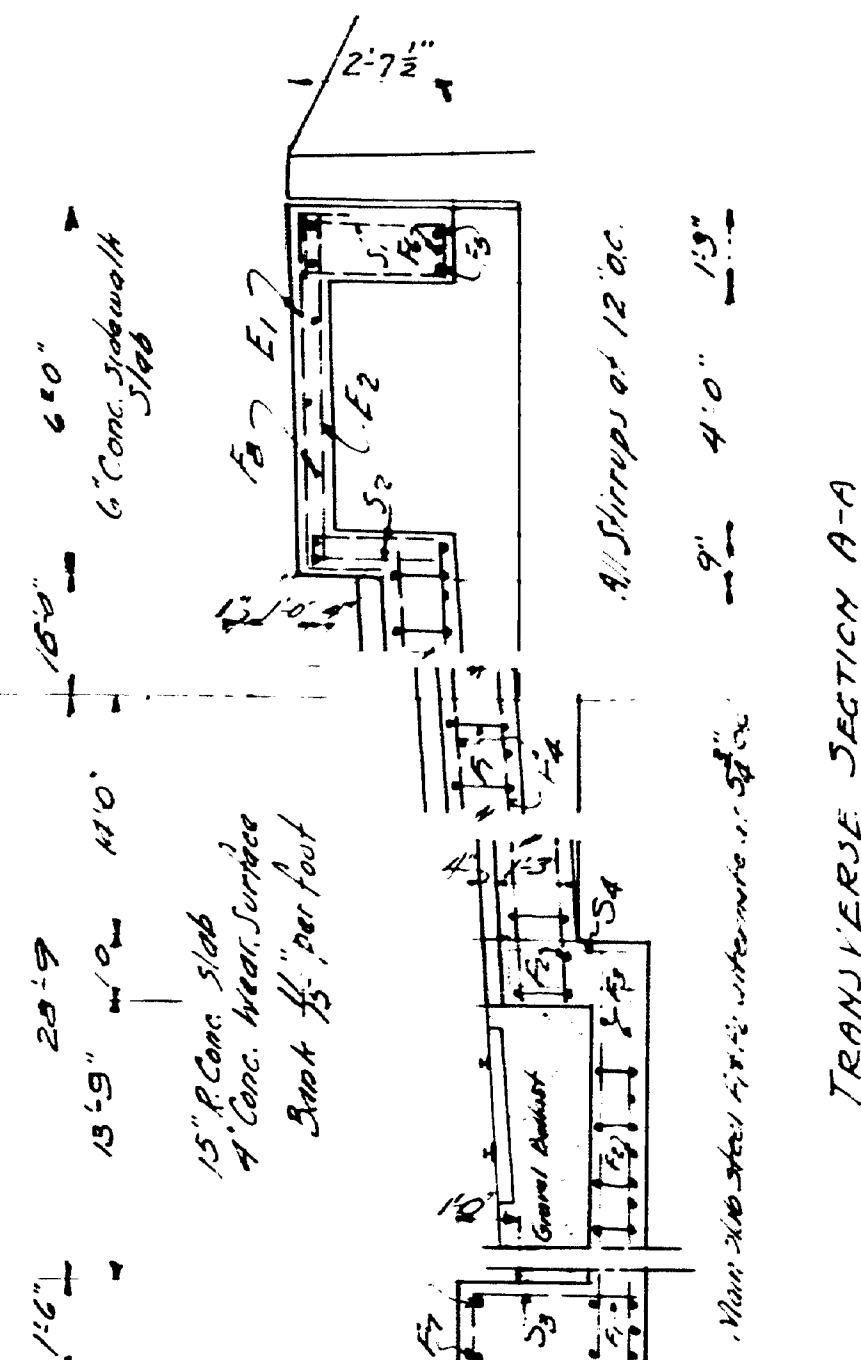


LONGITUDINAL SECTION B-B

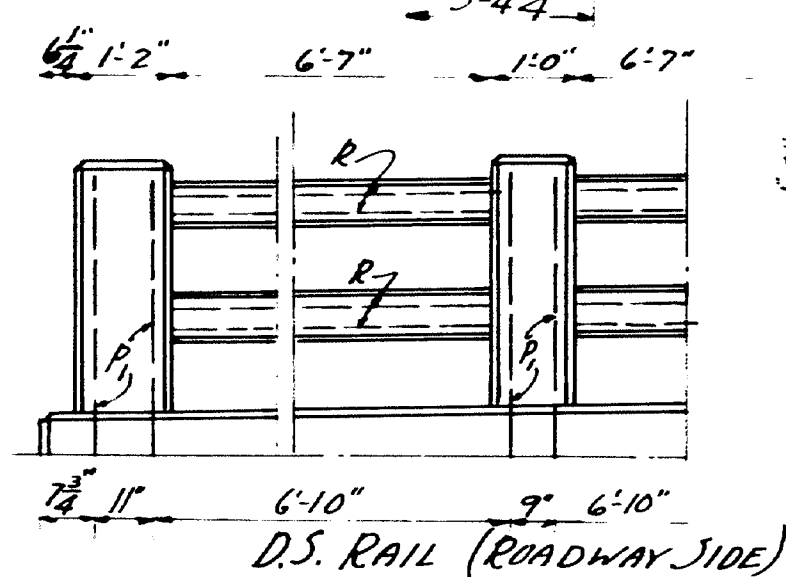
Outside Curb El. 31.03

Outside Curb El. 32.17

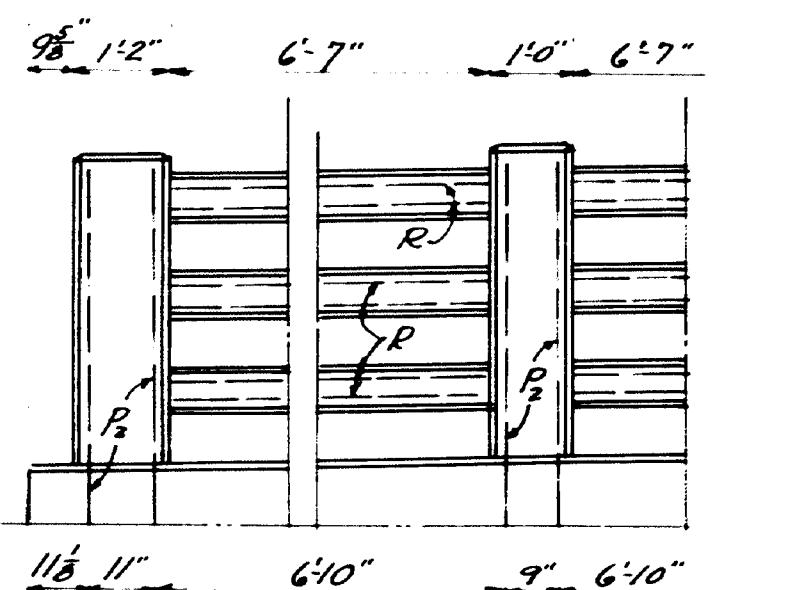
SECTION C.C.



TRANSVERSE SECTION A-A

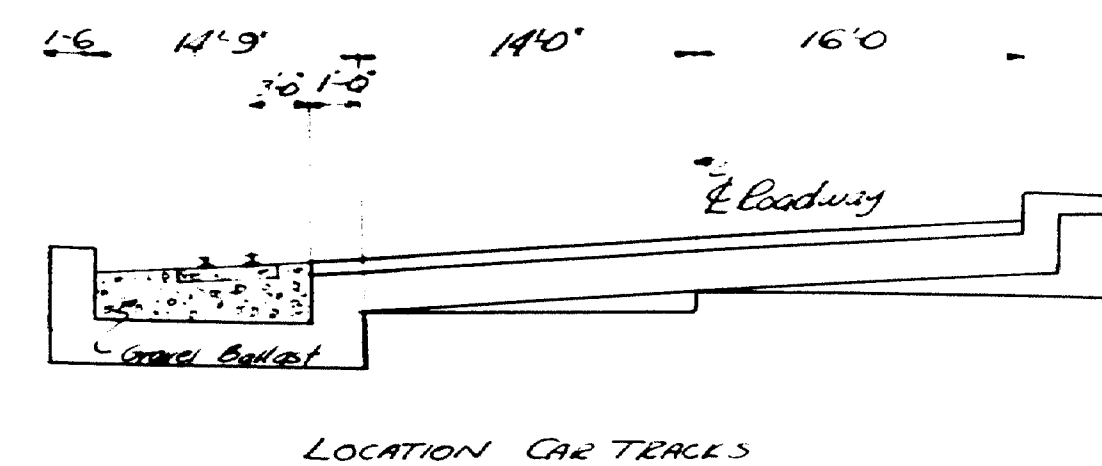


D.S. RAIL (ROADWAY SIDE)



U.S. RAIL (SIDEWALK SIDE)

Curb and slab to be cast together. Set steel for rail posts in curbs. Precast 10 rail bars in lengths of 7'-0". Wrap end 6" of each bar with two thicknesses of light roofing. Place rail bars in position with ends projecting 2 1/2" into post forms. After post forms are removed cut away all left left exposed. Chamfer all exposed edges of concrete 1/2" unless otherwise indicated.



LOCATION CAR TRACKS

STEEL SCHEDULE

STRAIGHT BARS

MX No SIZE LENGTH LOCATION

F2 50 1" x 17'-5" Rdwy Slab E2 35 3/4" x 5'-9" Slab Slab

F3 11 3/4" x 16'-0" R 20 3/4" x 6'-11" Rail Bars

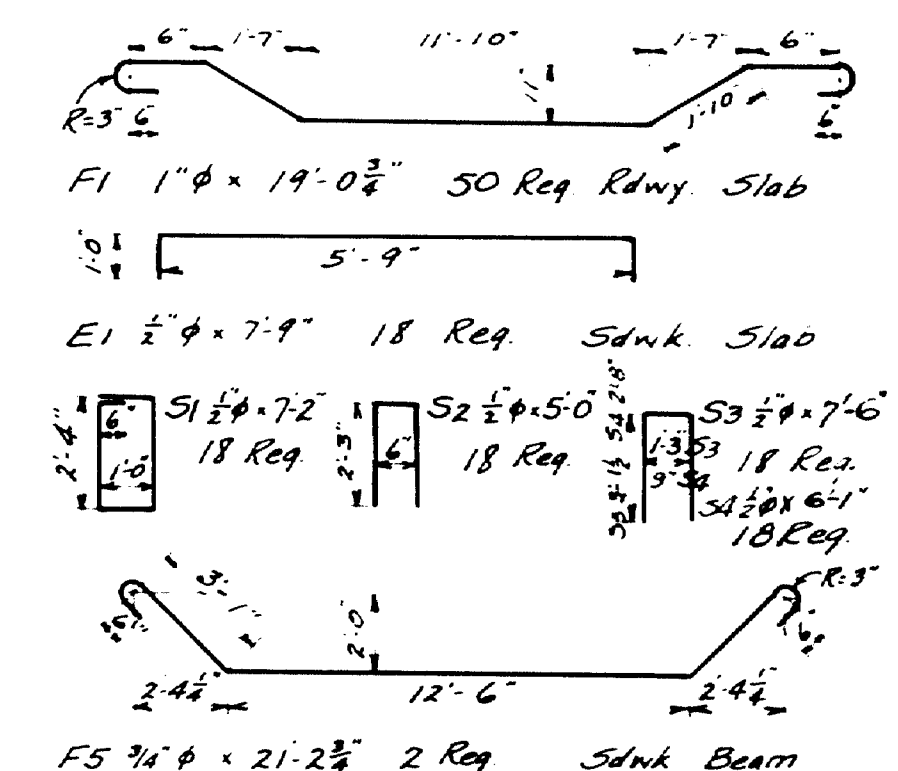
F4 22 3/4" x 17'-0" P1 12 3/4" x 4'-0" Posts DS

F6 1 3/4" x 17'-9" Slab Beam P2 12 3/4" x 4'-9" US

F7 2 3/4" x 17'-5" Rdwy Curb T1 31 3/4" x 16'-6 1/2" Wear Surf

F8 7 3/4" x 17'-10" Slab Slab T2 34 3/4" x 16'-0" US

K 60 3/4" x 8'-0" Abutts



All steel to be plain bars of structural grade
All dimensions are to center of bars

TOWN 10-04
BRIDGE 2711

STATE HIGHWAY COMMISSION
BRIDGE DIVISION
RED BRIDGE
OVER
PENJEWOCK STREAM
IN THE CITY OF
BANGOR
PENOBSCOT COUNTY
SLAB DETAILS
SHEET 3 OF 3 AUGUSTA, ME. JUNE, 1936

23-166