

# Workforce conditions & outlook

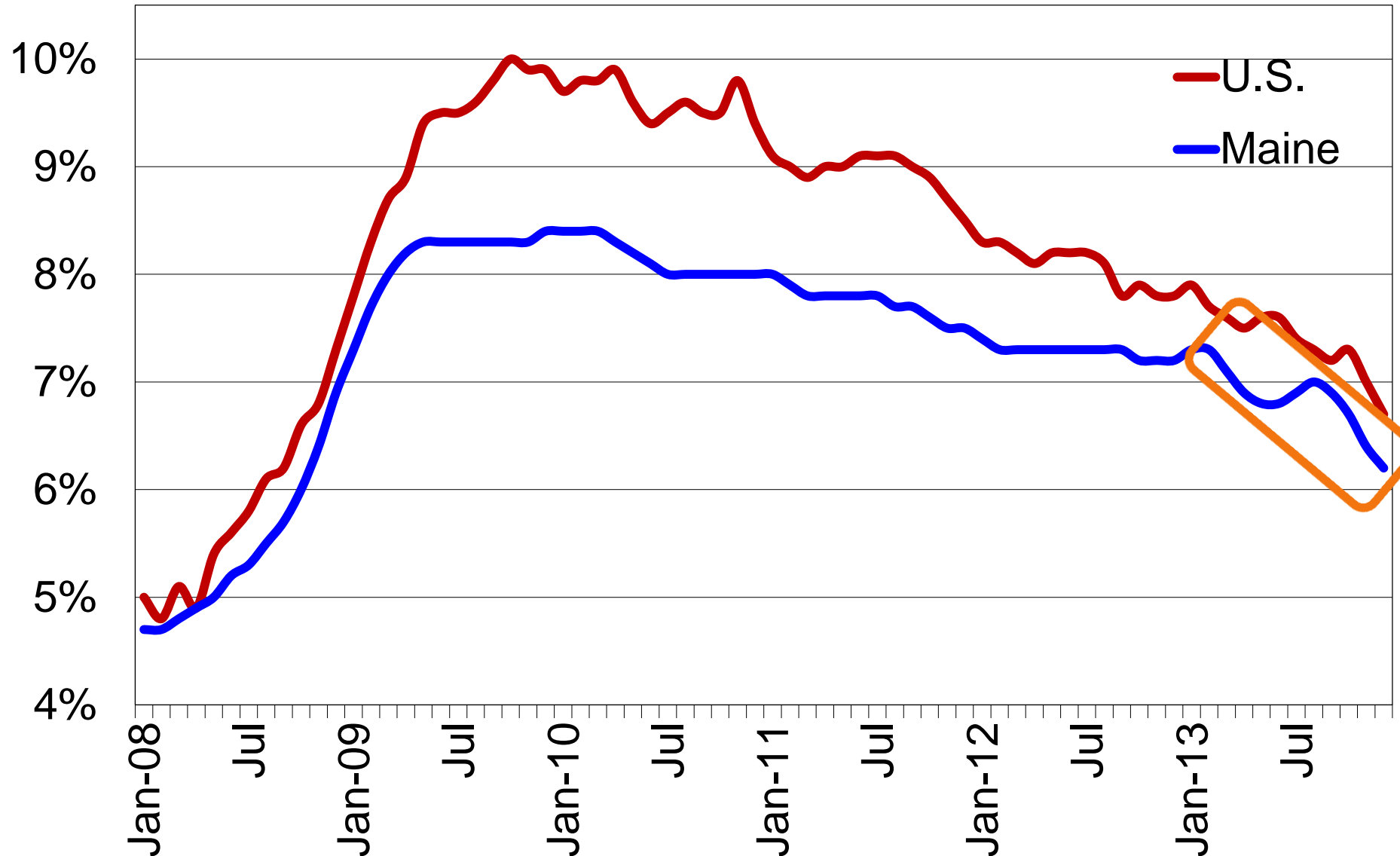
Presented to the  
Consensus Economic Forecasting Commission  
January 30, 2014

Glenn Mills  
Chief Economist  
Center for Workforce Research  
Maine Dept. of Labor  
[www.maine.gov/labor/cwri](http://www.maine.gov/labor/cwri)

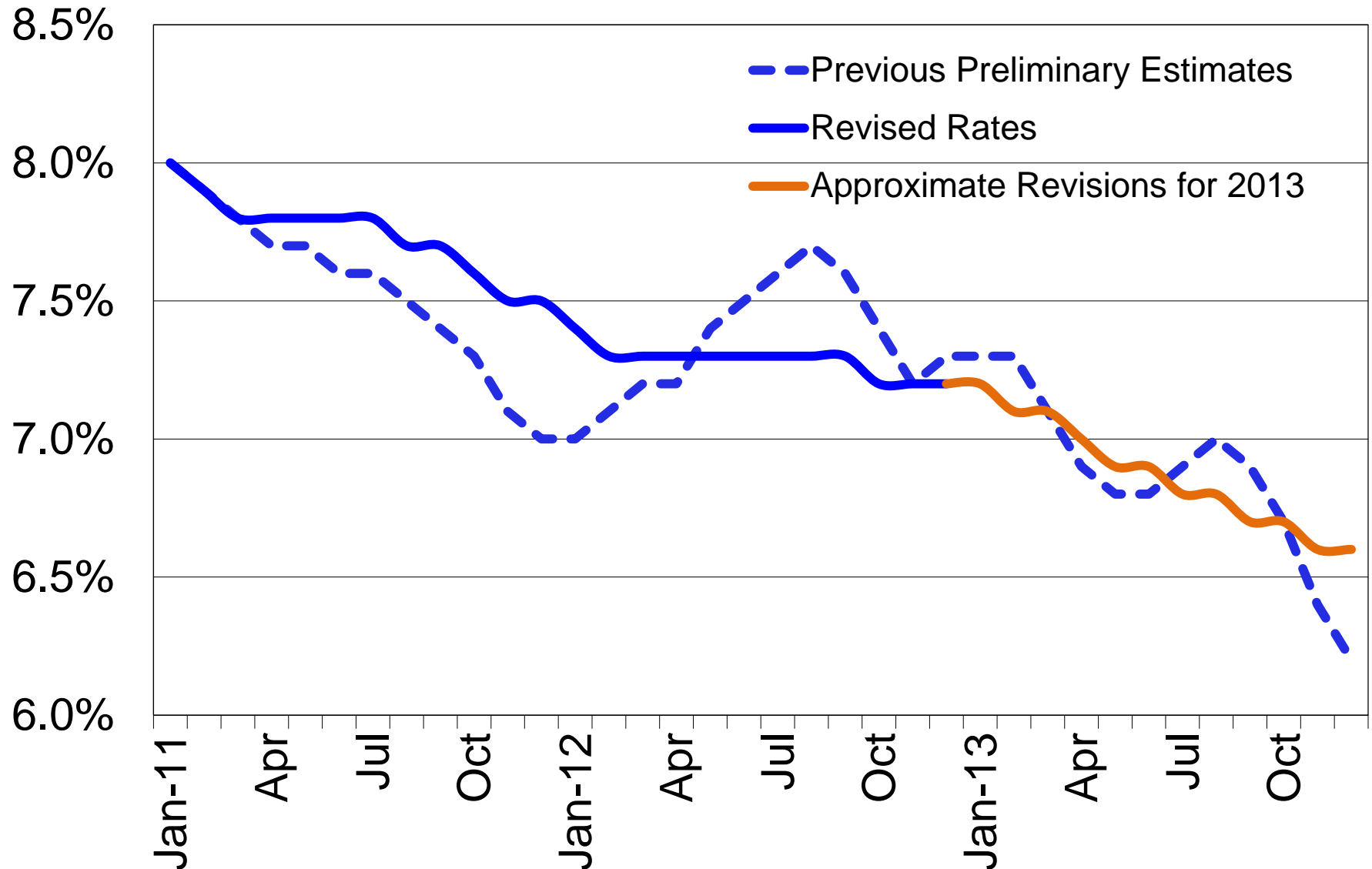
[Glenn.mills@maine.gov](mailto:Glenn.mills@maine.gov)  
207-621-5192

# Labor force & unemployment *(household survey)*

# Unemployment rates continue to trend lower

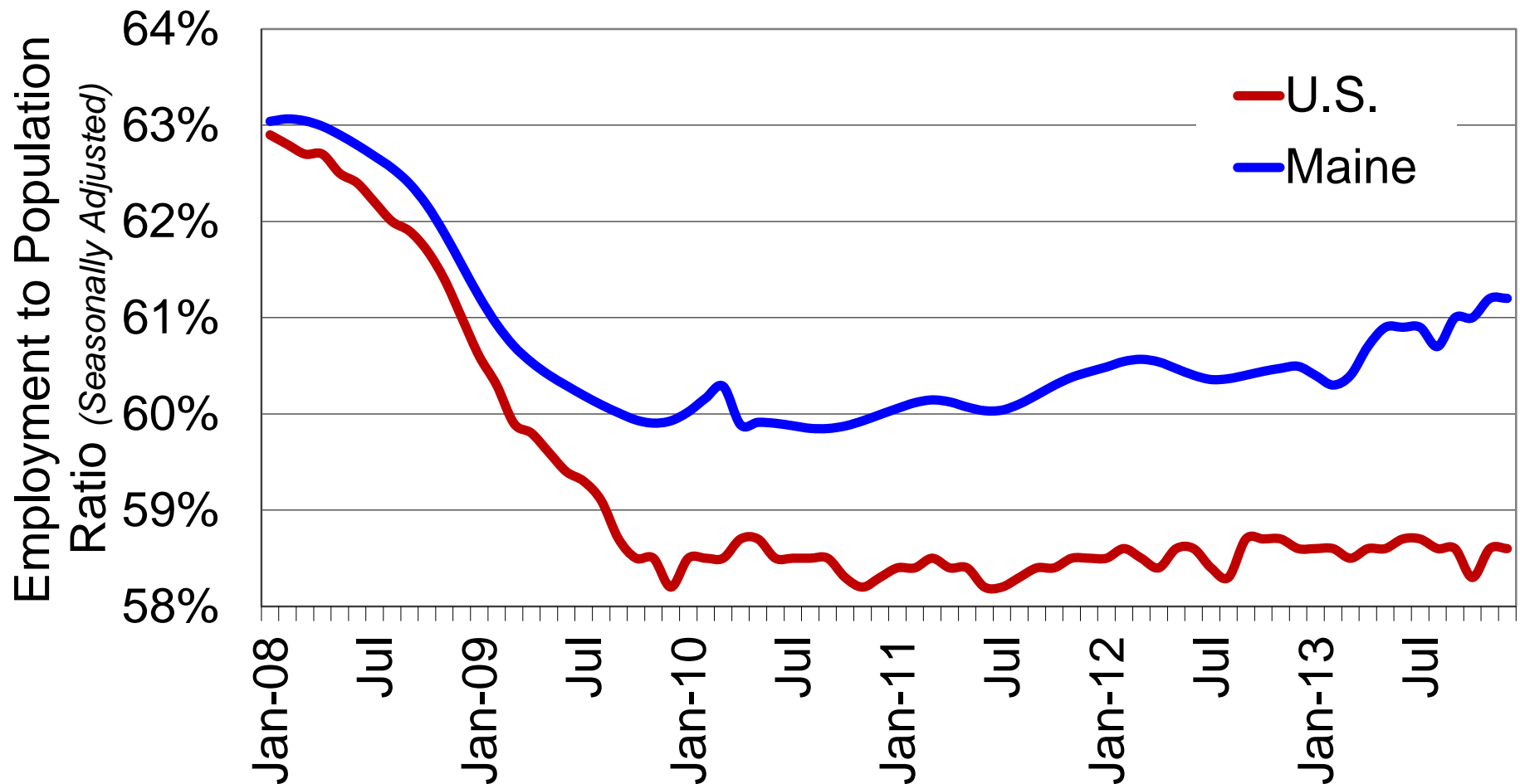


As in previous years, revisions to 2013 unemployment rates are likely to show a much smoother trend

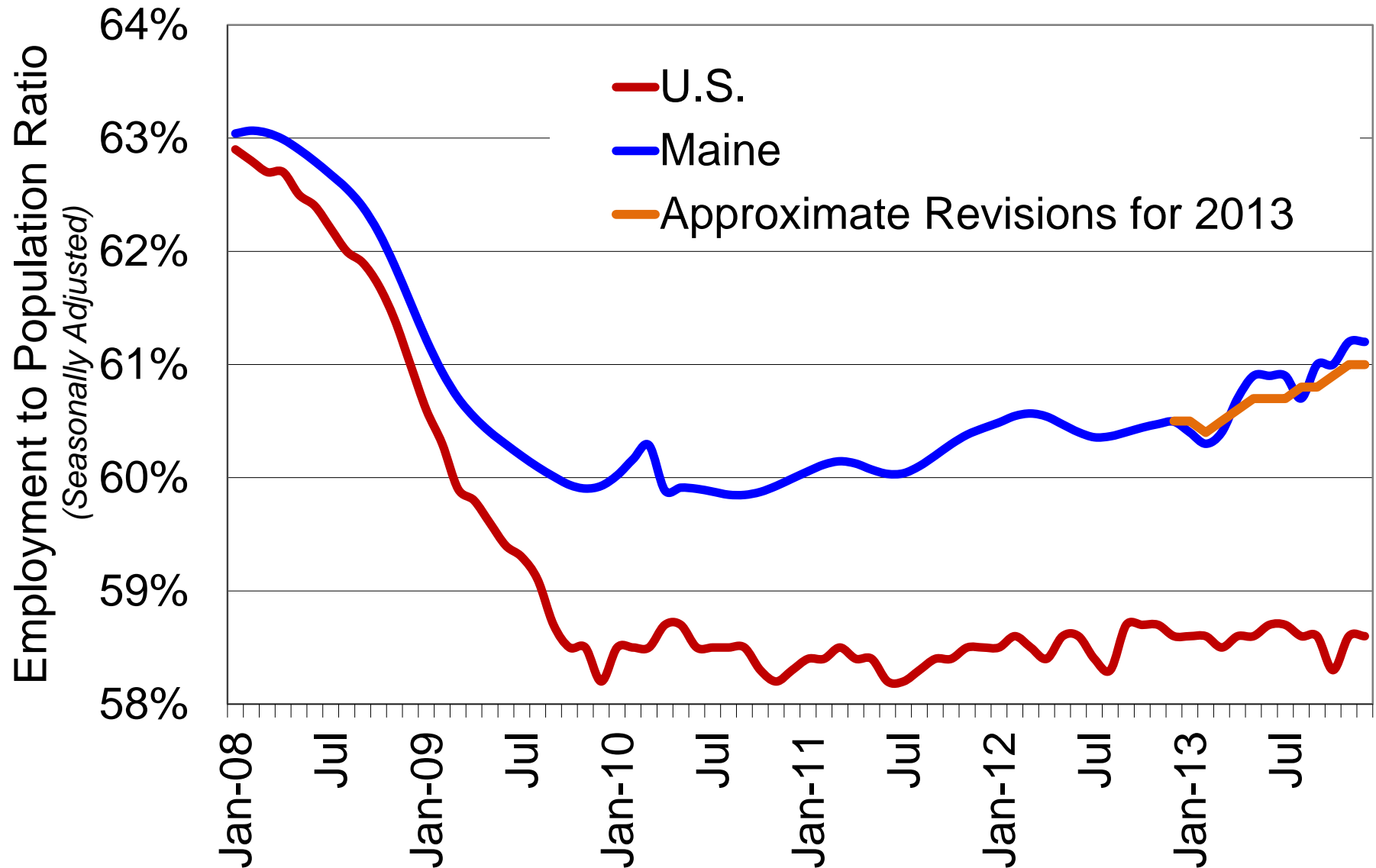


A rising share of employed population continues to be the primary factor in lower unemployment rates in Maine.

The U.S. share of employed population remains flat – unemployment rate declines continue to be solely due to lower labor force participation.

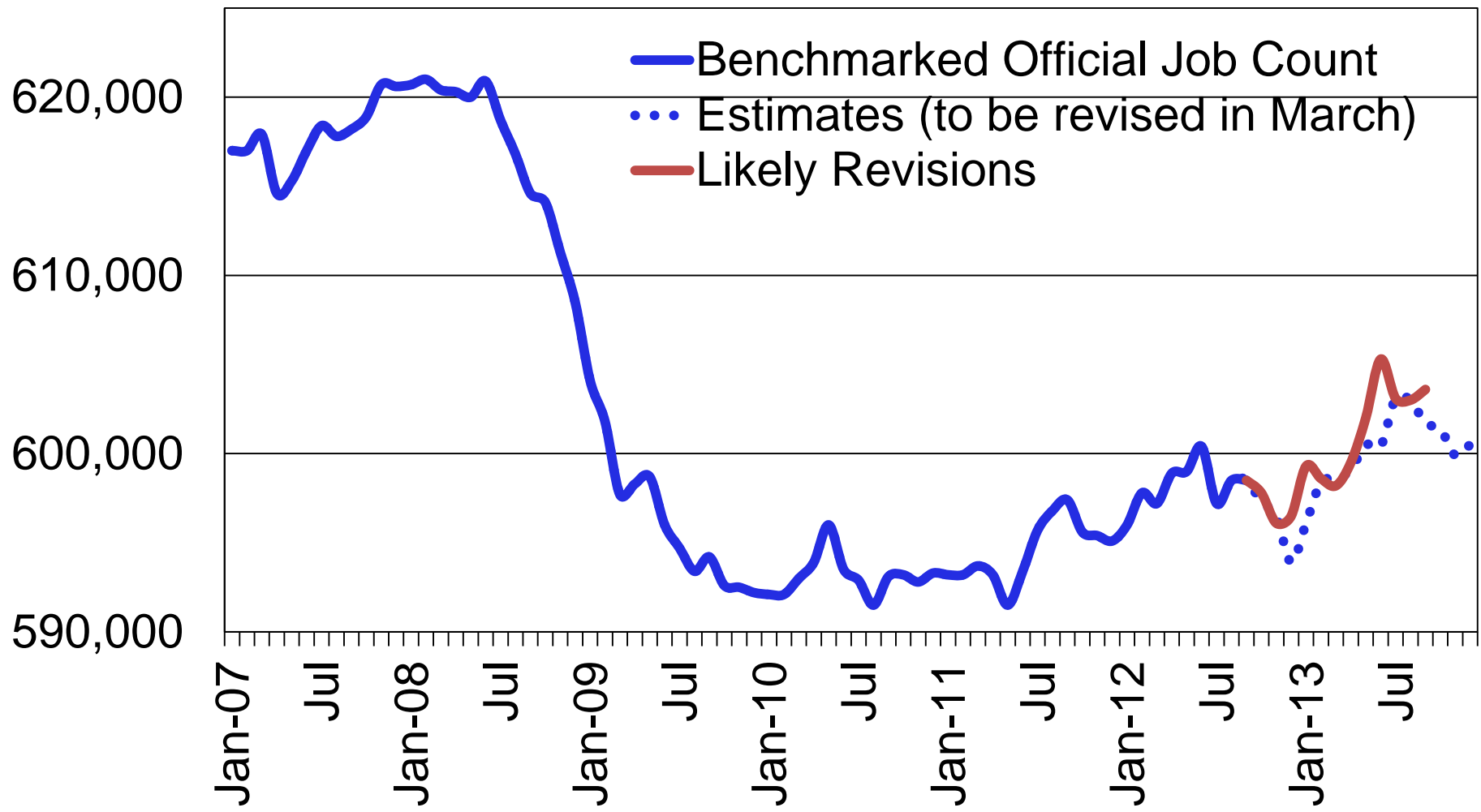


# Expected revisions are likely to smooth 2013 estimates



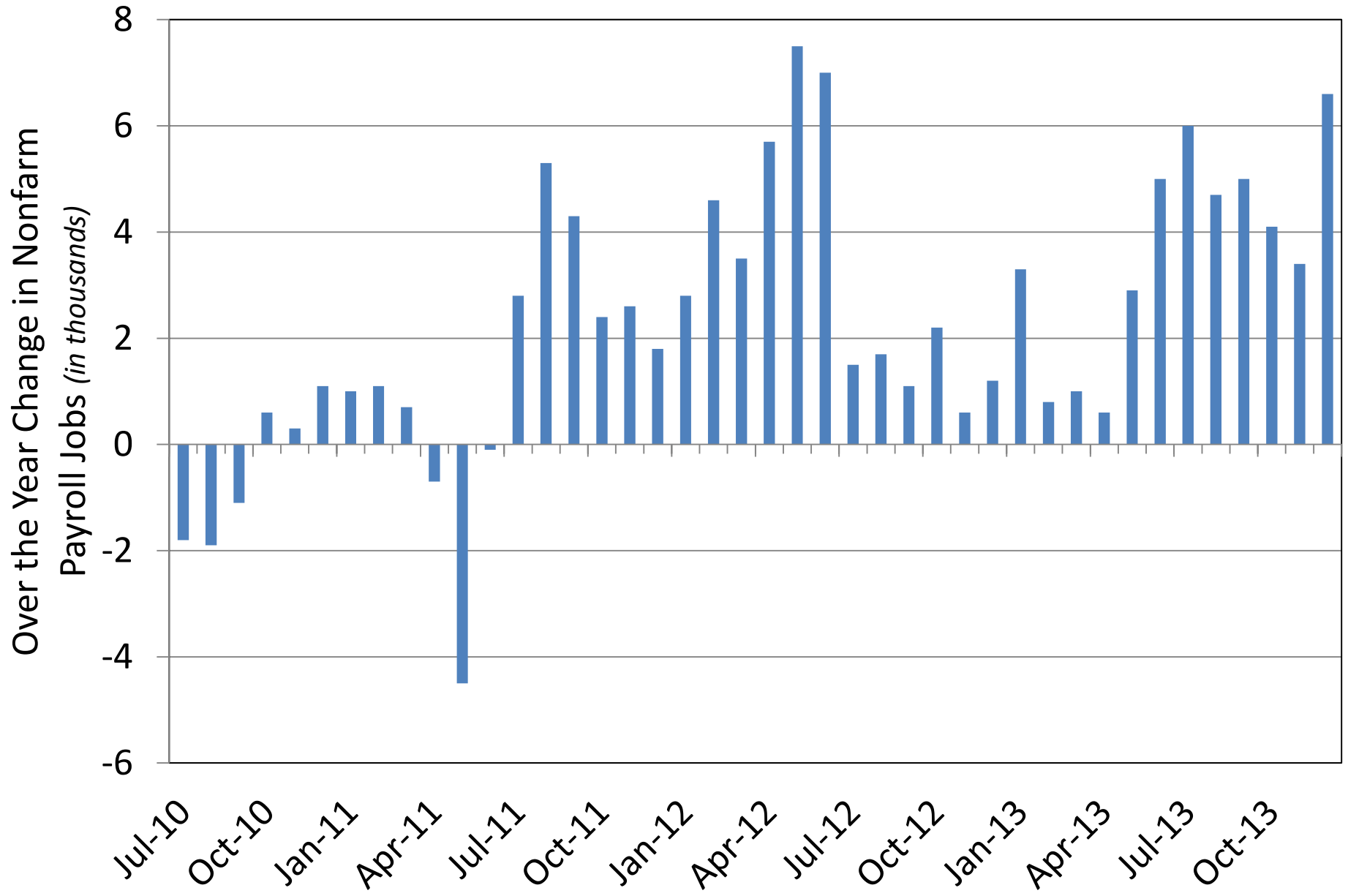
# Payroll Jobs

Payroll job estimates for most months since September 2012 will be revised higher. Growth continues to be concentrated in three sectors: professional & business services, education & healthcare, and leisure & hospitality.

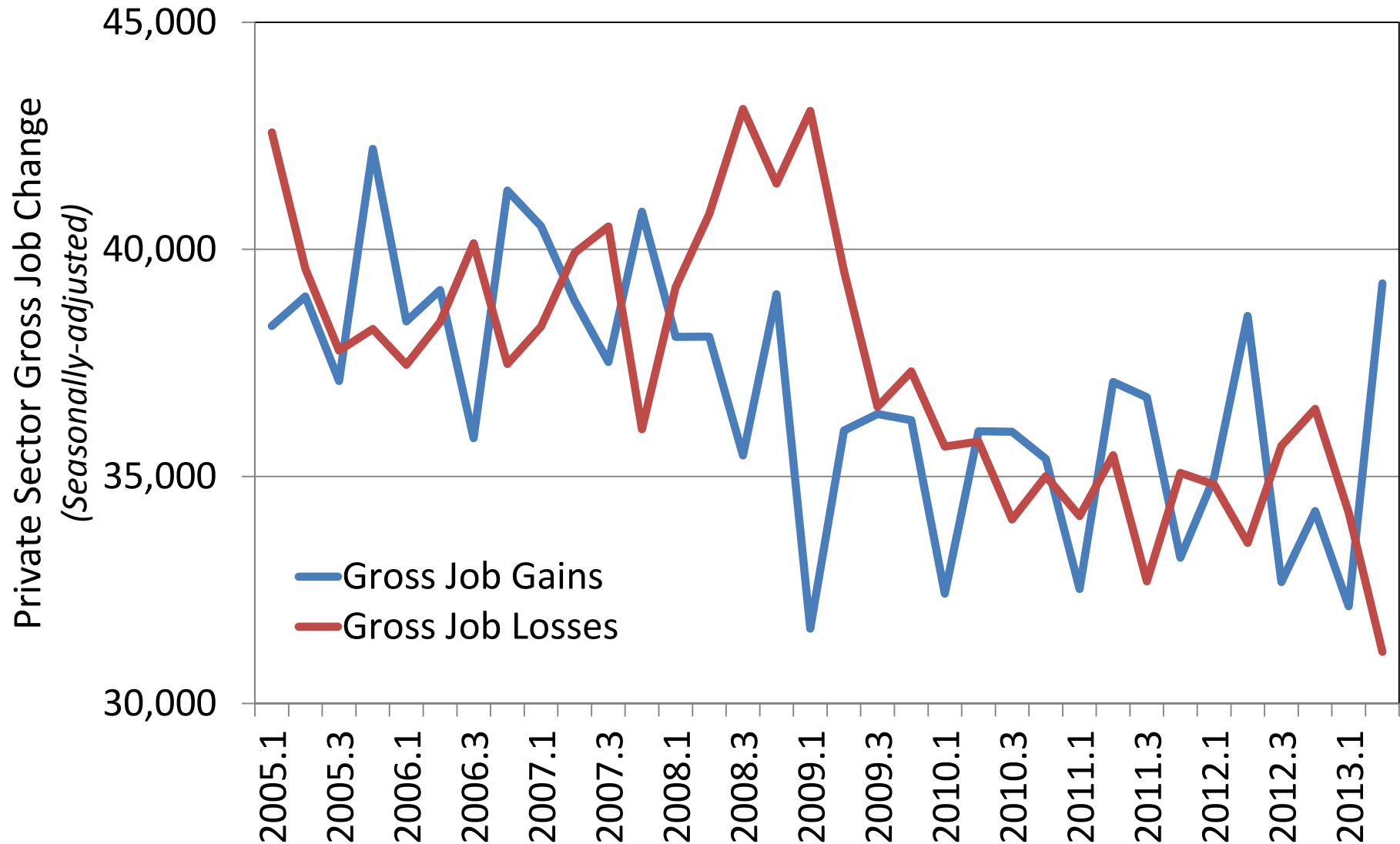




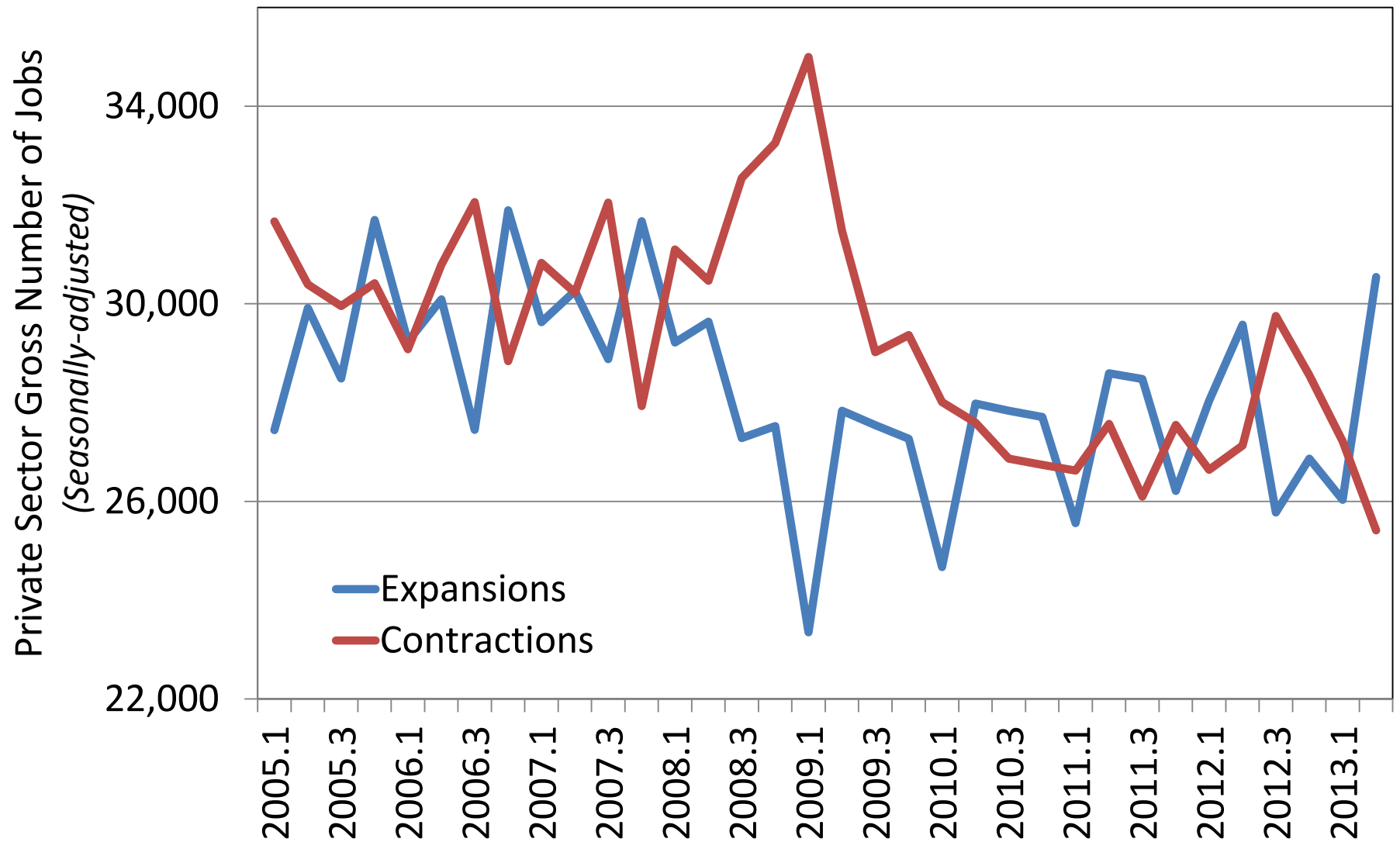
# Job growth has accelerated after briefly slowing



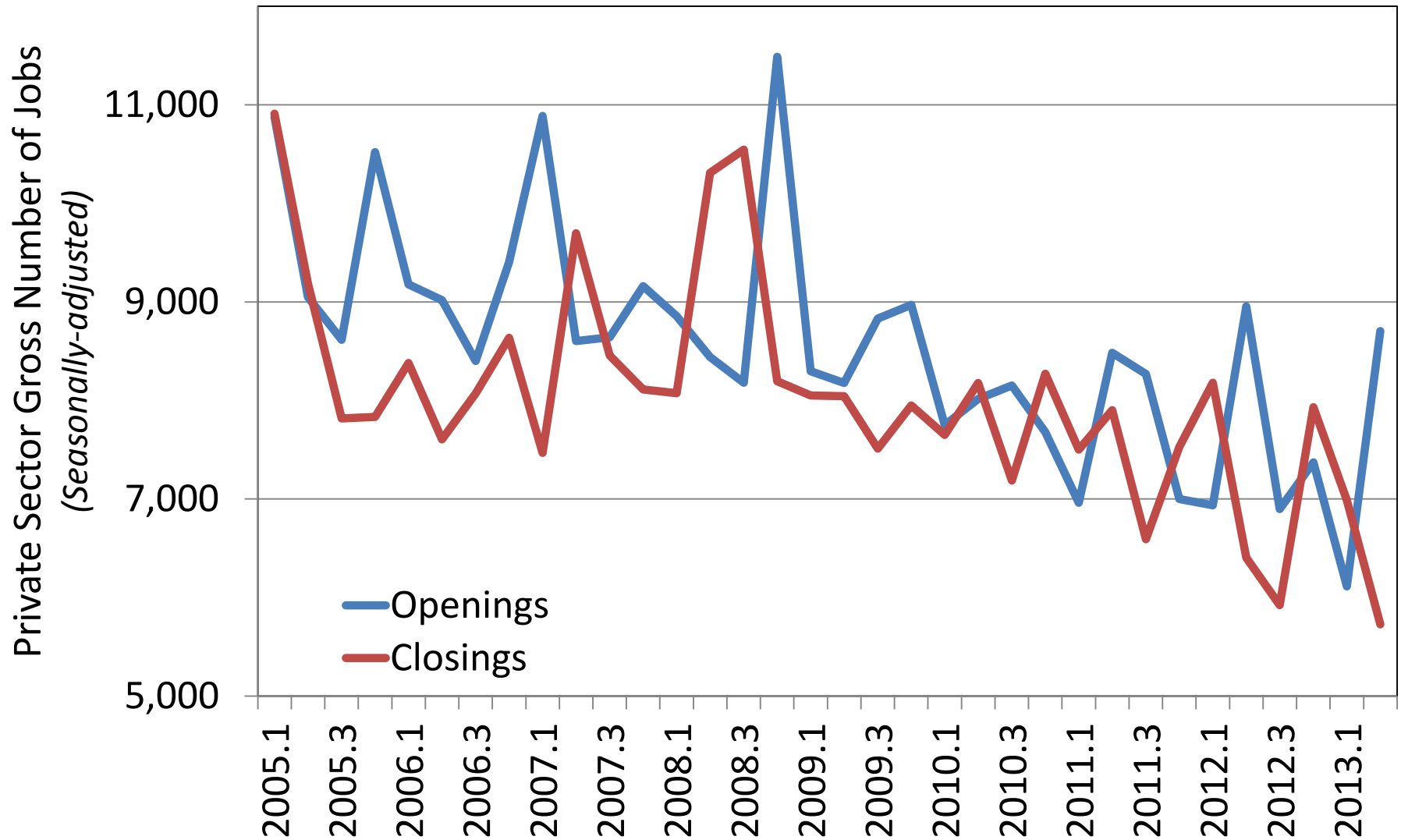
# The level of job churn remains modestly below pre-recession levels...



...Job gains from expanding employers are gradually trending up and job losses from contractions have flattened...

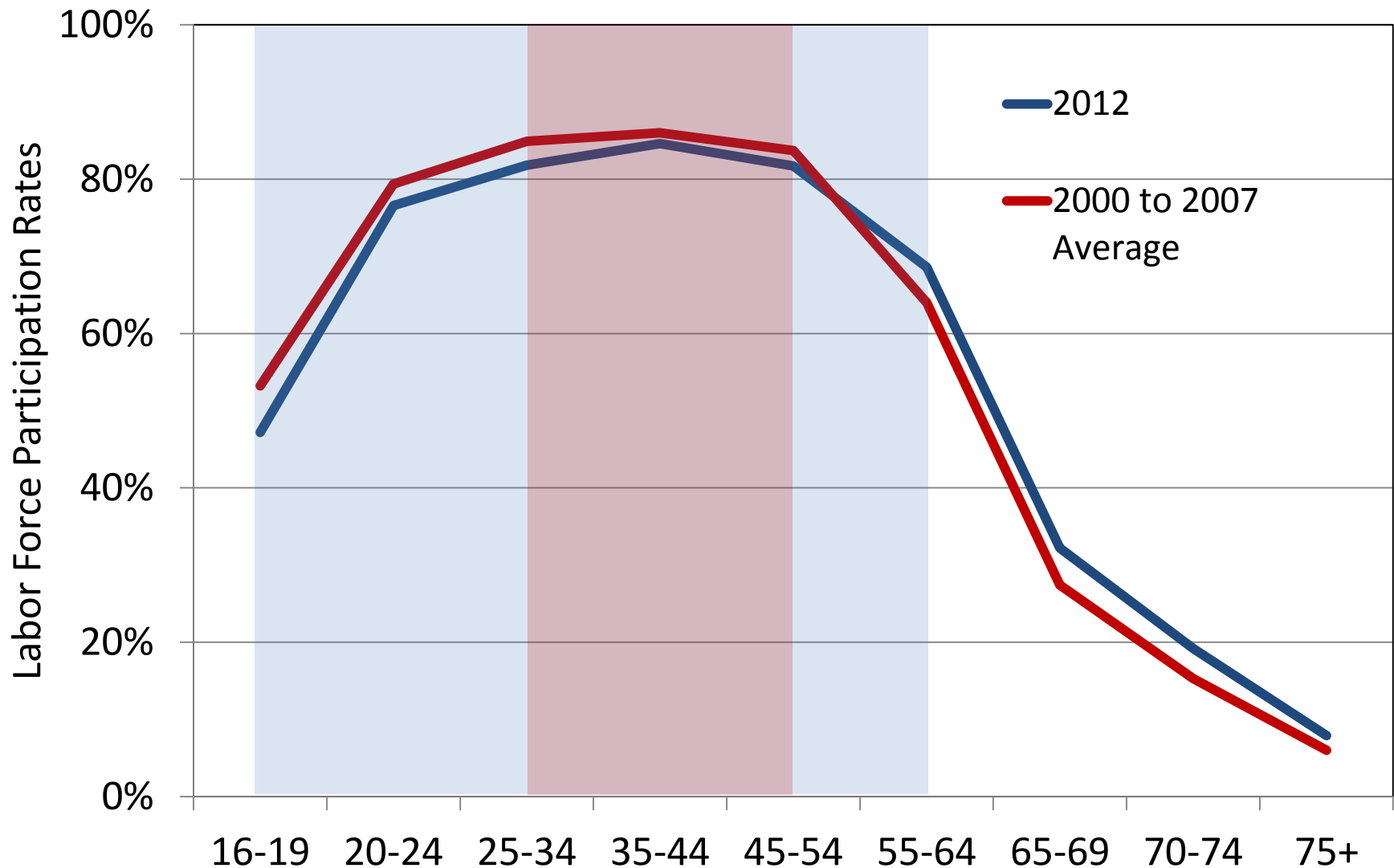


...Job gains from openings and losses from closings continue to gradually trend lower



More  
demographic  
considerations

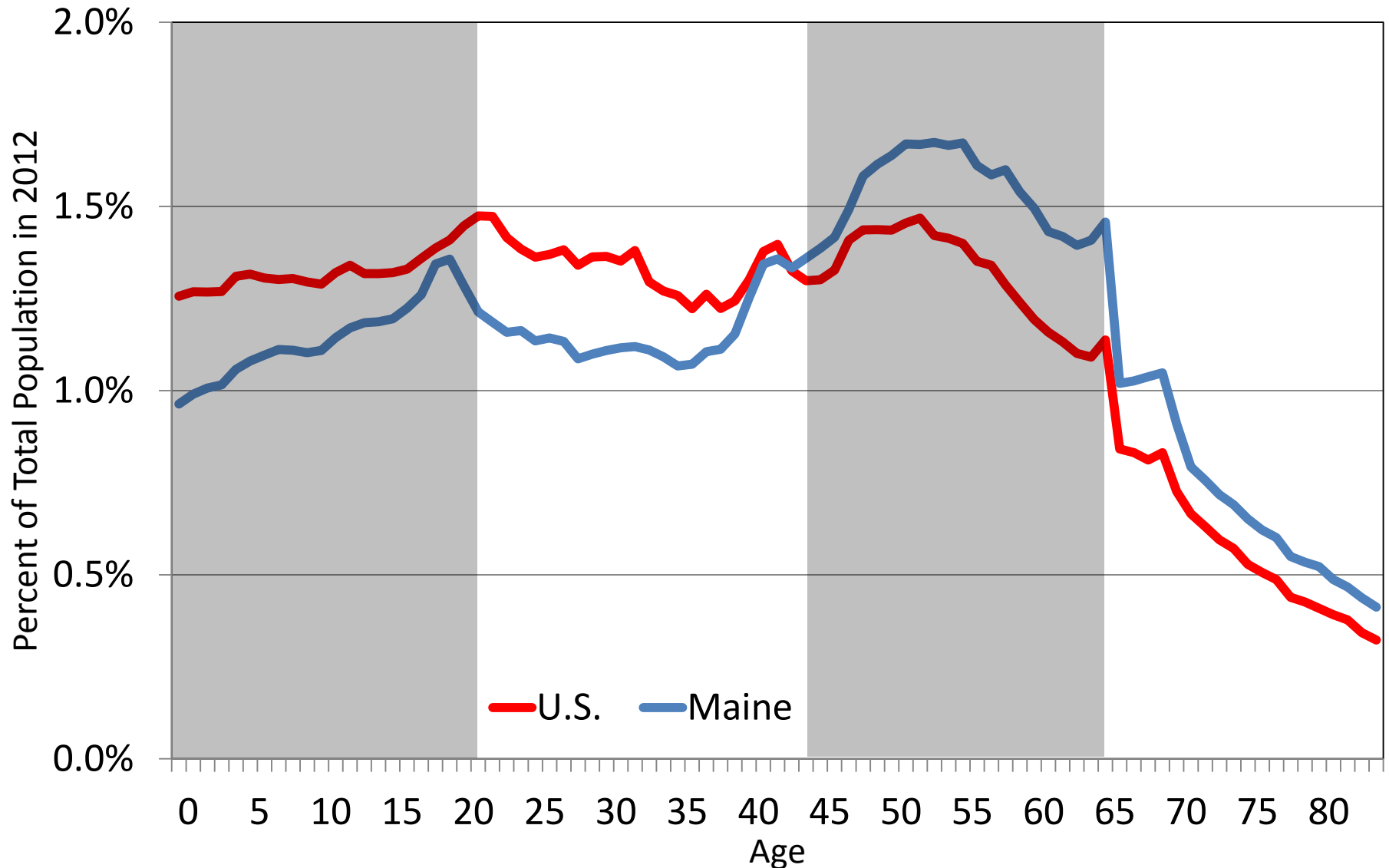
As we move through the lifecycle, our attachment to the labor force is highest between age 25 and 54 before declining at an accelerating rate with age...



...This decade a very large share of the population is aging  
beyond their peak years of labor force attachment  
*(Population by year of age if there were no migration in or out of Maine)*

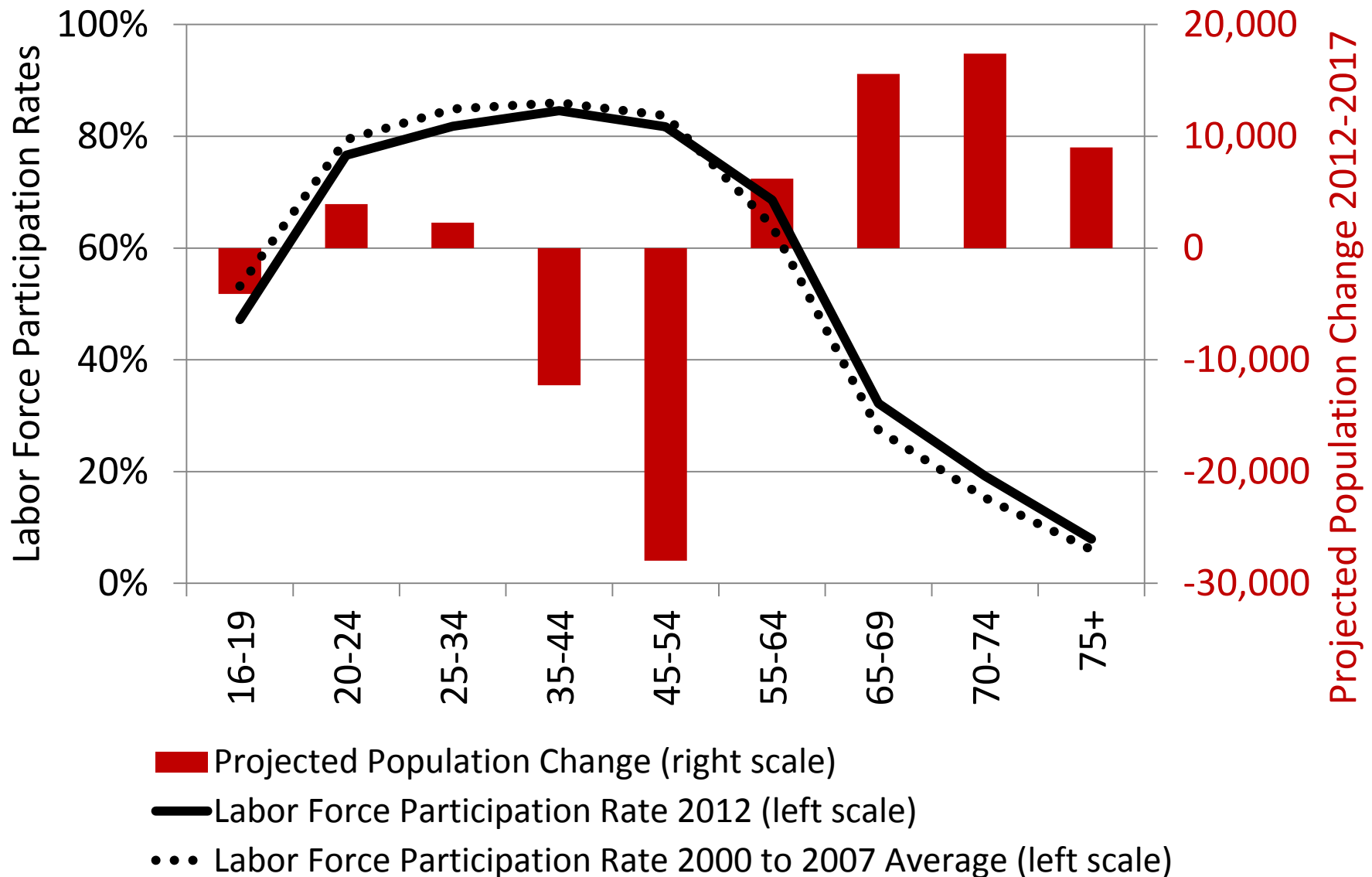


# Maine has an unusually large share of Baby Boomers and a low share of young people to enter the workforce

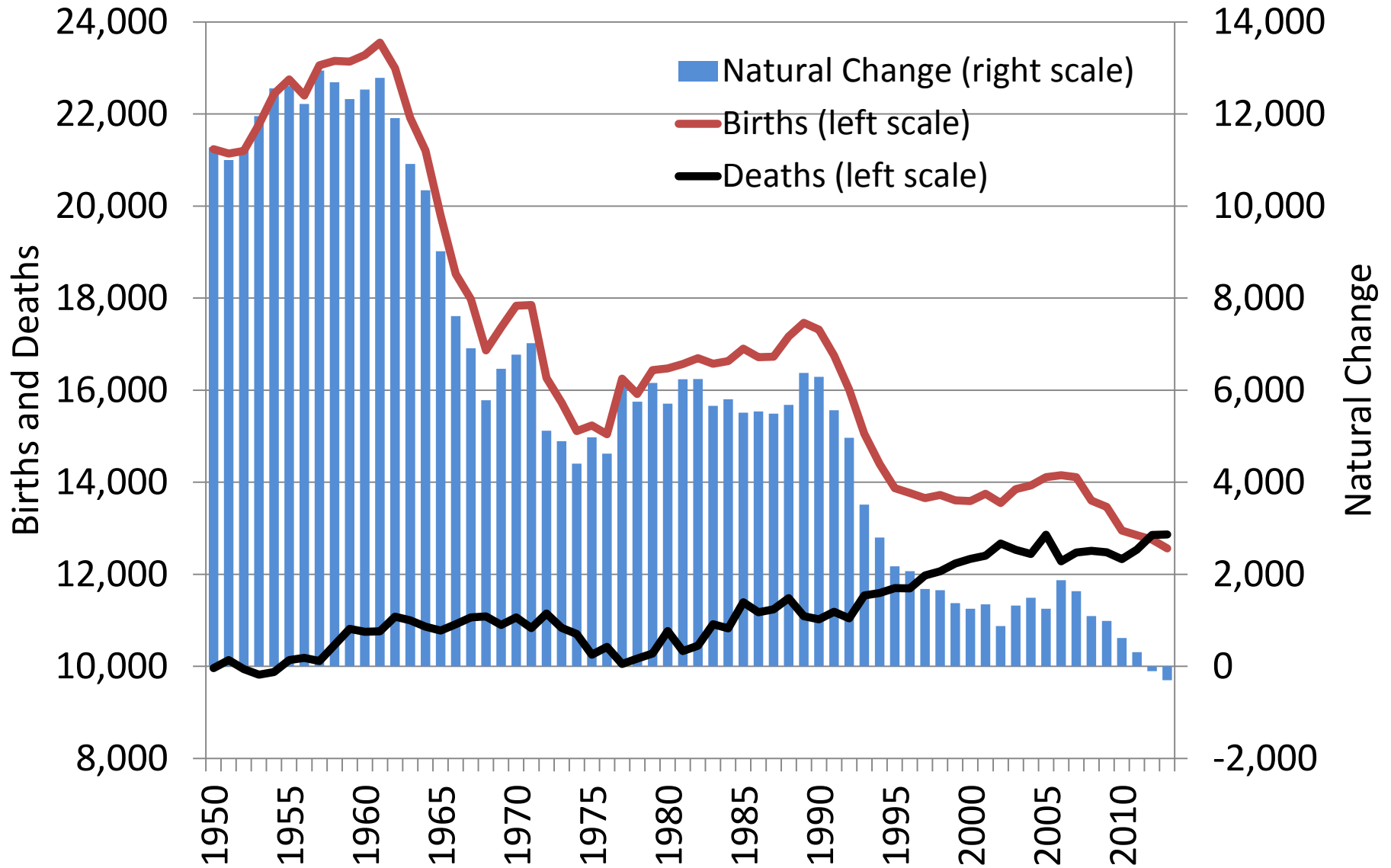




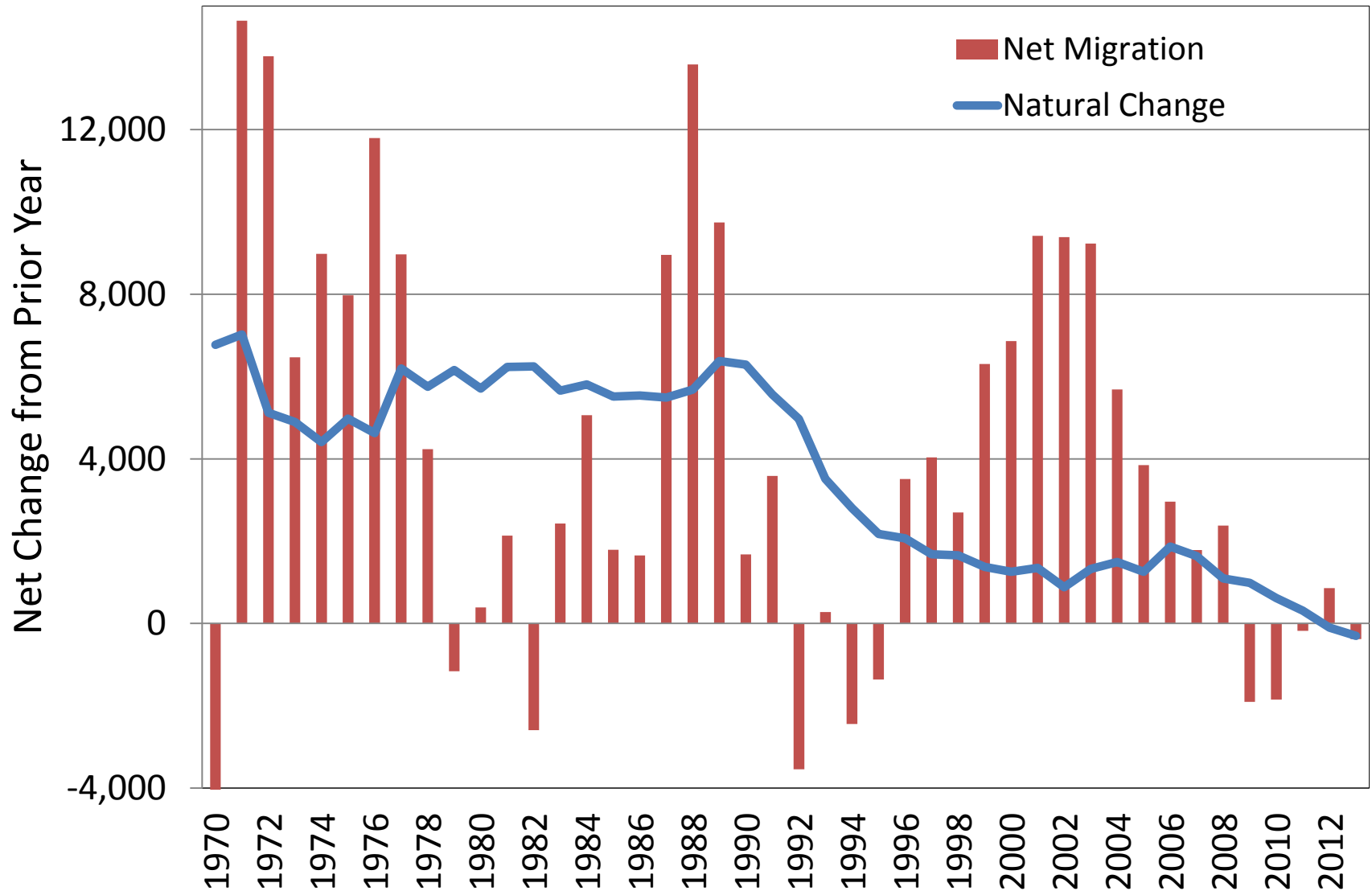
# The population in their peak years of labor force participation is declining rapidly



We can no longer count on a natural increase in population...



...We will need an increase to 1970s levels of net immigration to maintain a stable workforce



# Appendix

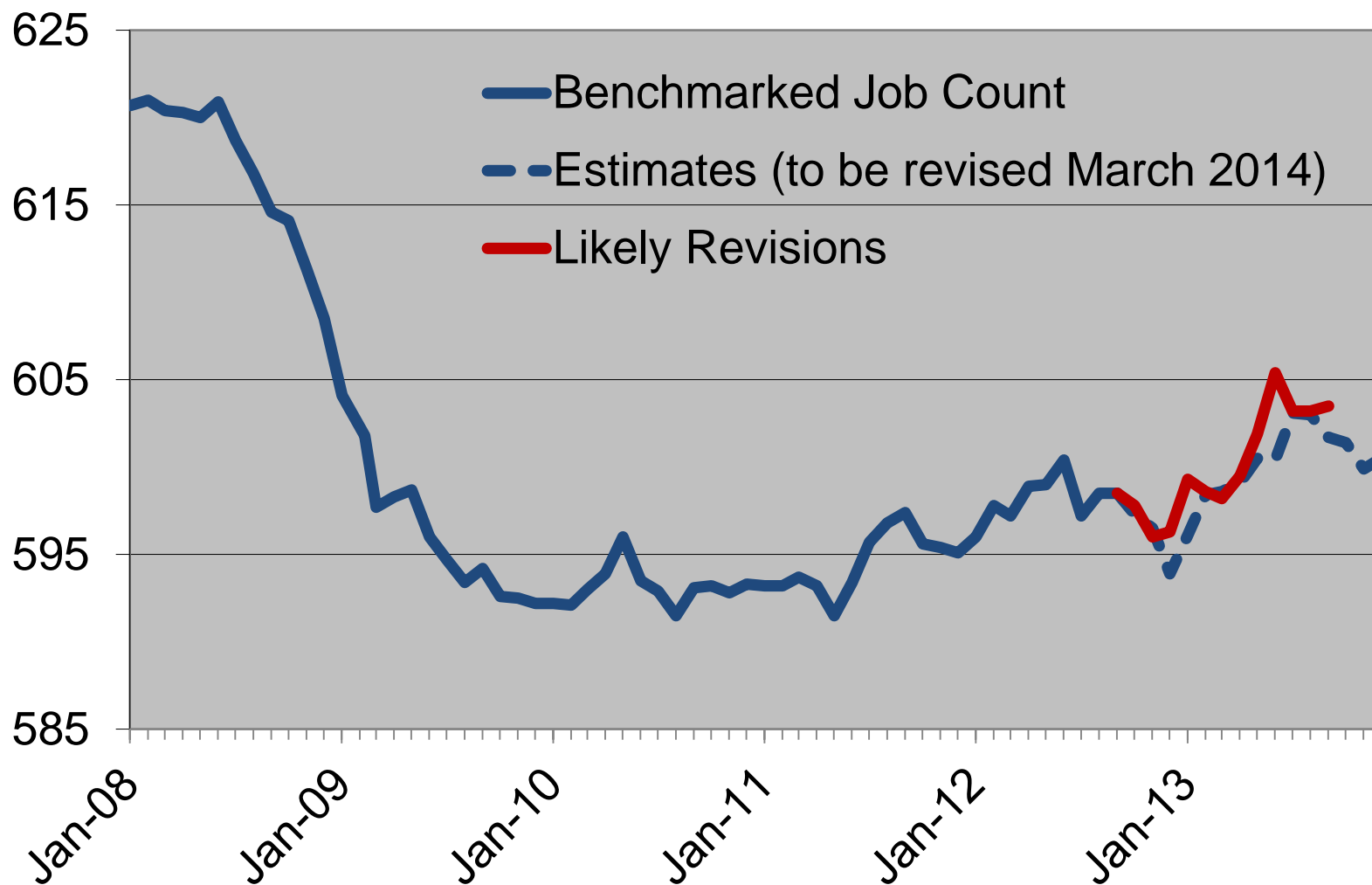
## Recent trends in payroll jobs

### Highlights:

- Growing sectors tend to be human capital intensive, often requiring specialized education, knowledge, or skills:
  - Healthcare & social services, professional & business services, and educational services.
  - Leisure & hospitality, which tends to be labor intensive, also is growing.
- Jobs in sectors that make, move, or sell physical products generally have stabilized, but there is no significant growth:
  - Manufacturing, construction, wholesale & retail trade, and transportation, warehousing & utilities.
- All three levels of government continue to shed jobs.
- The experience of those displaced from labor intensive work generally does not match the education and skill requirements of growing sectors.

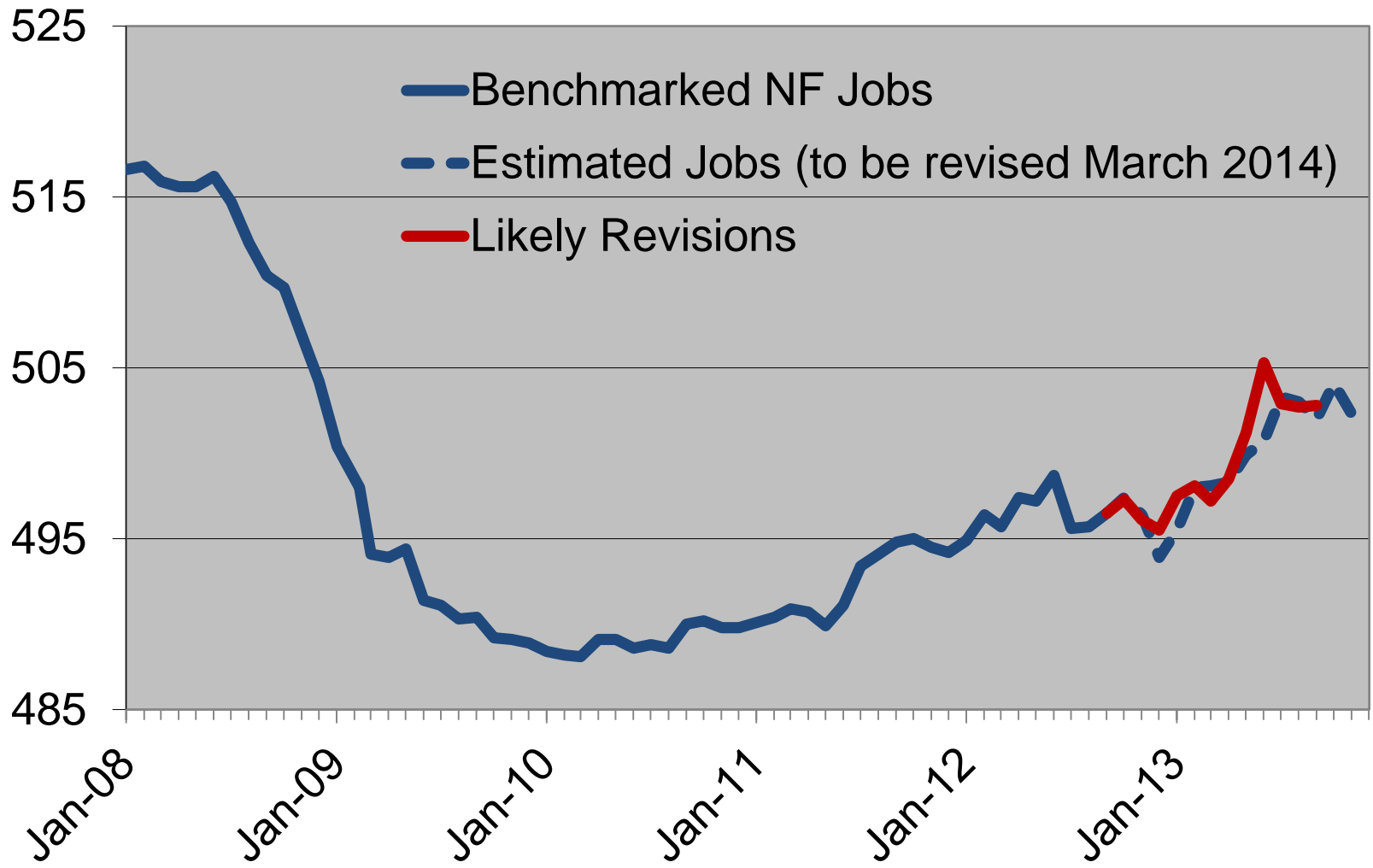
# Total Nonfarm Jobs

(seasonally adjusted in thousands)



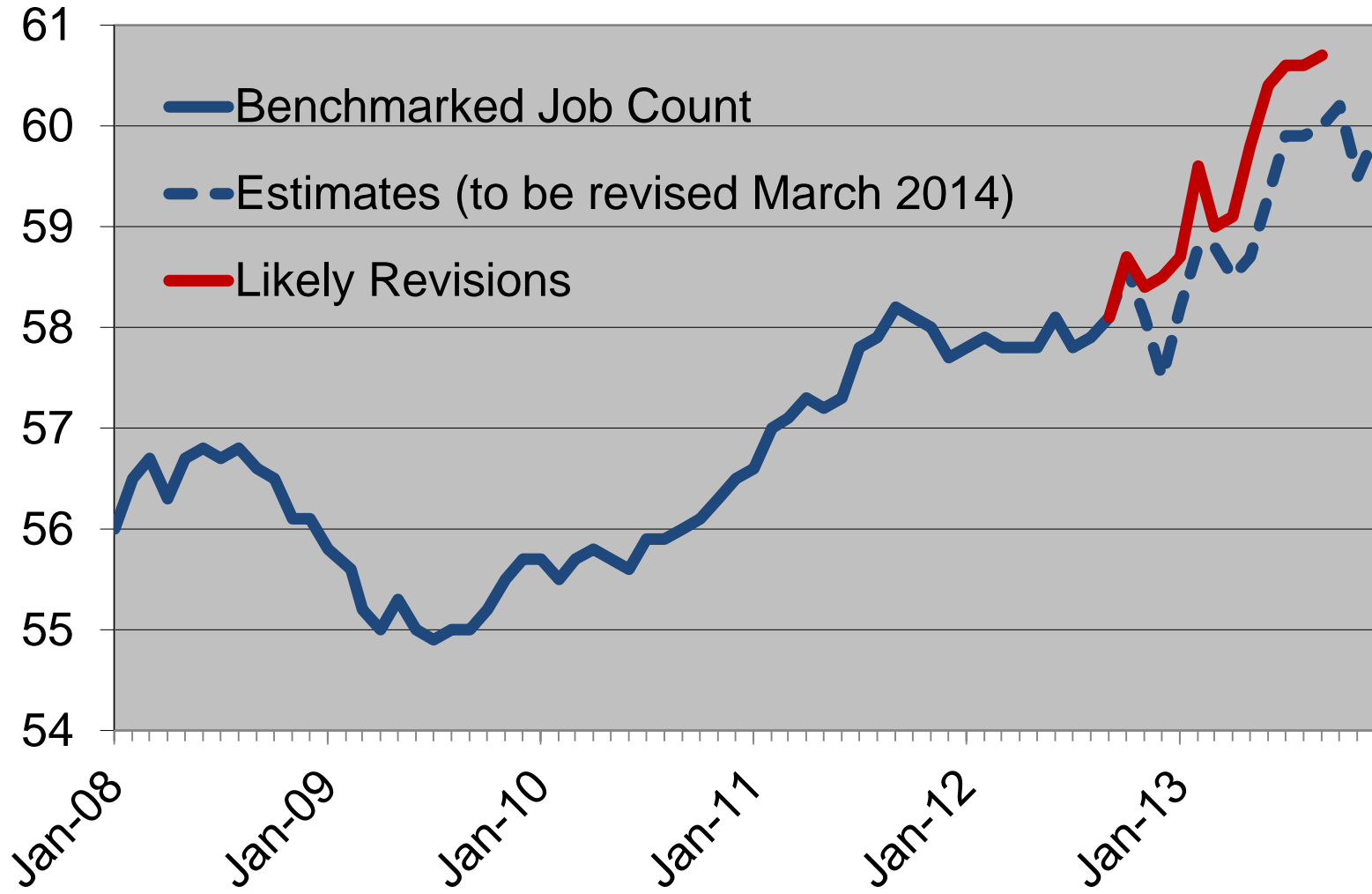
# Total Private Jobs

(seasonally adjusted in thousands)



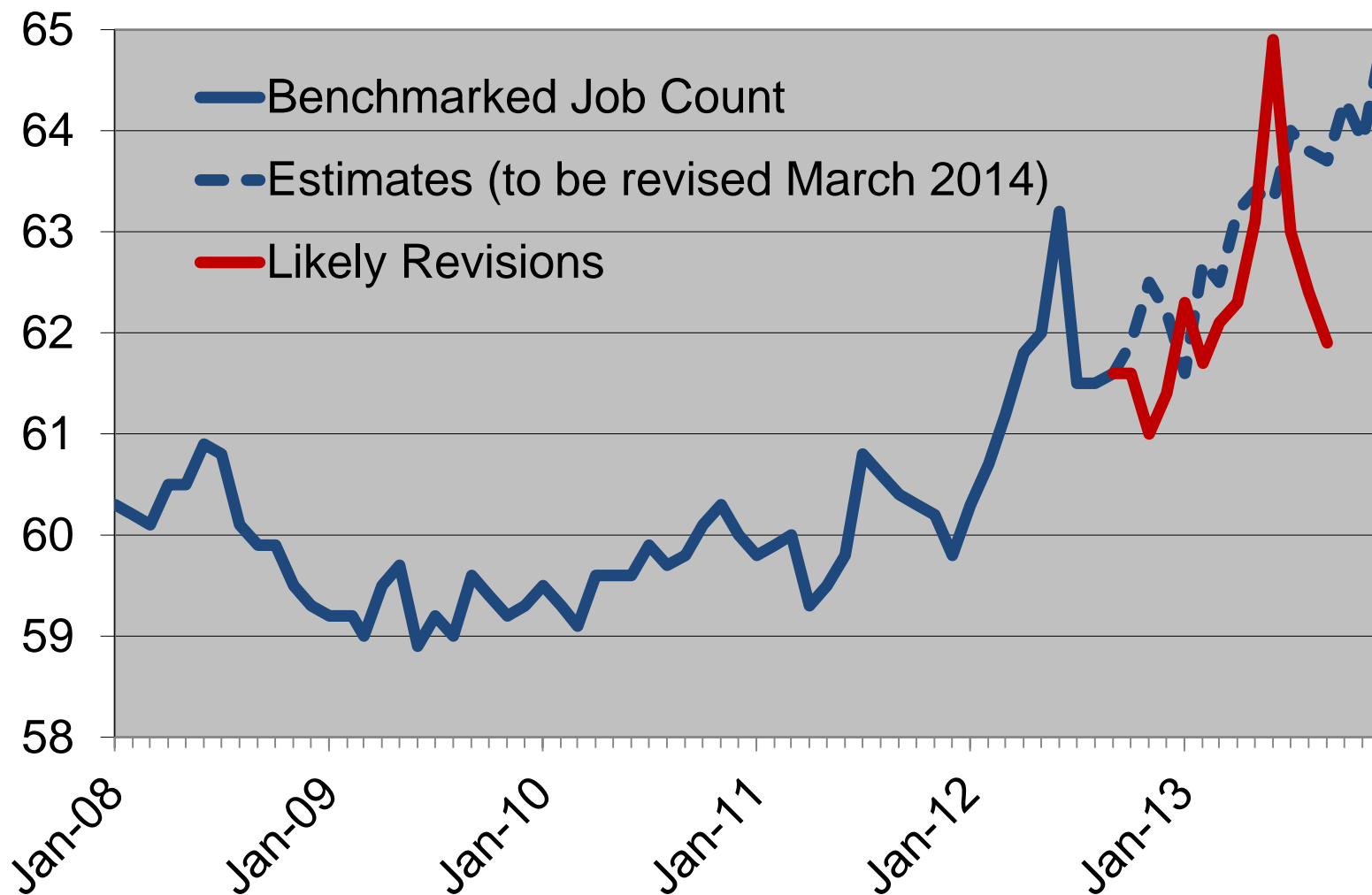
# Professional & Business Services Jobs

(seasonally adjusted in thousands)



## Leisure & Hospitality Jobs

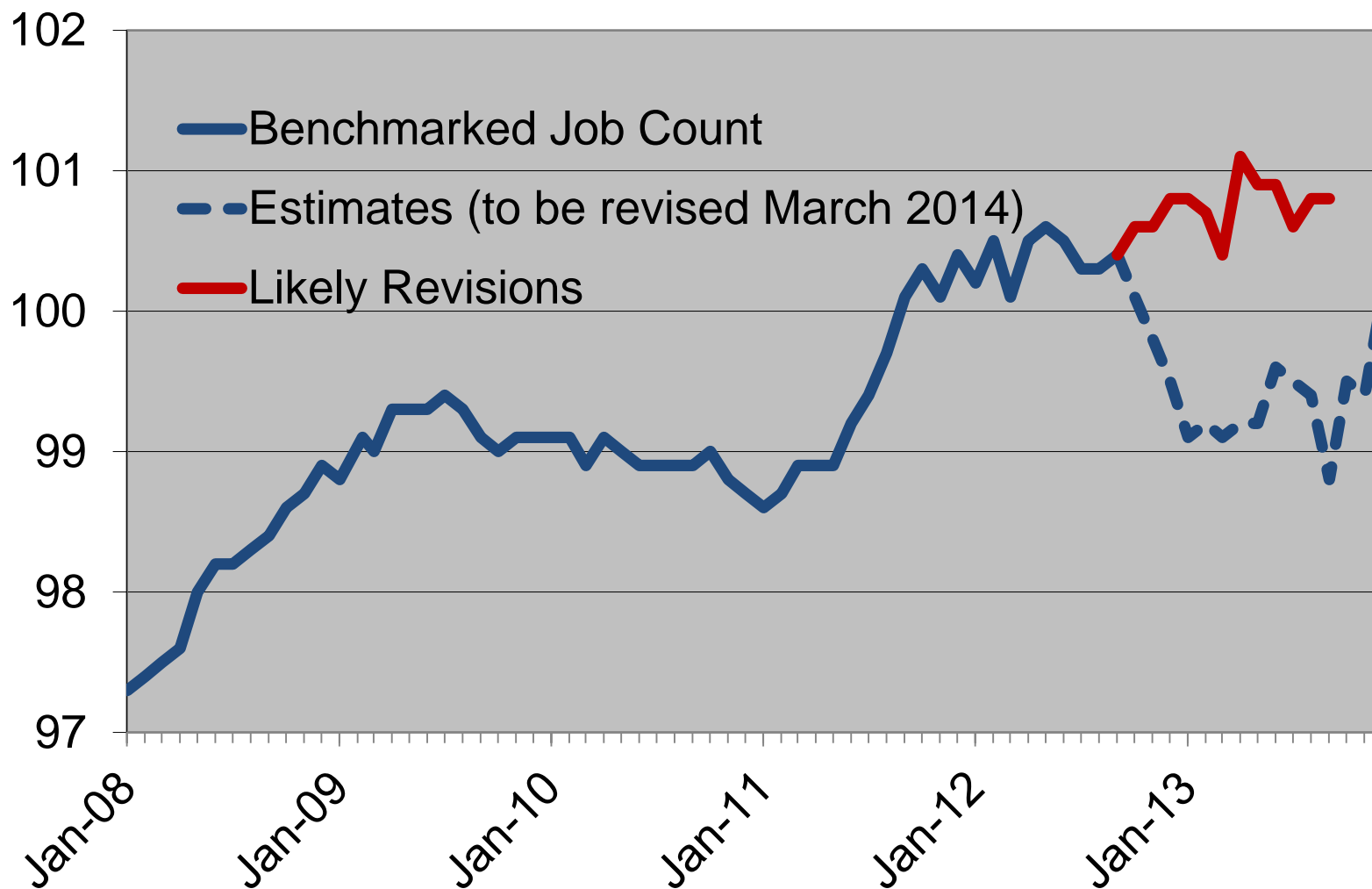
*(seasonally adjusted in thousands)*





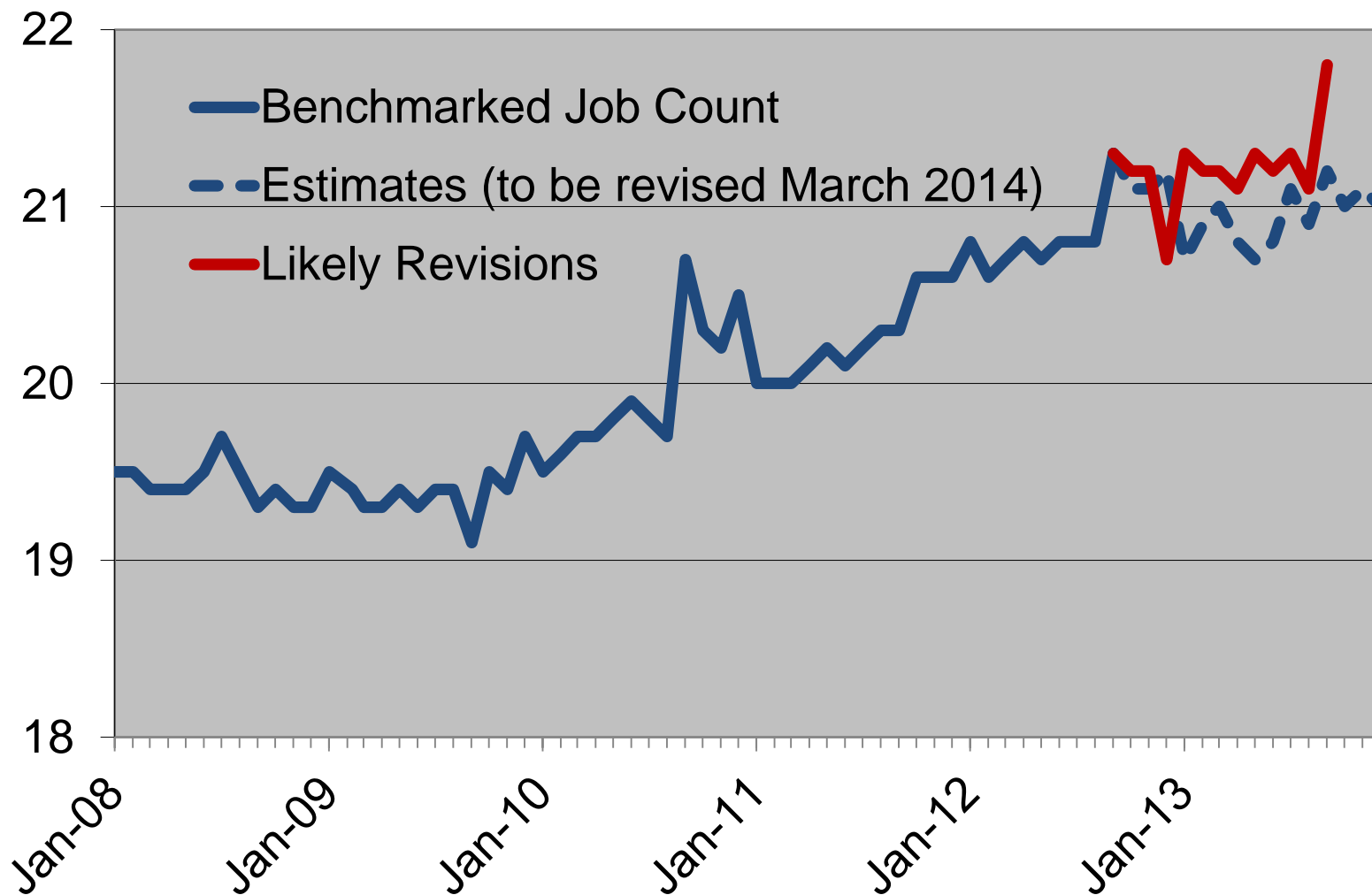
## Healthcare & Social Assistance Jobs

*(seasonally adjusted in thousands)*



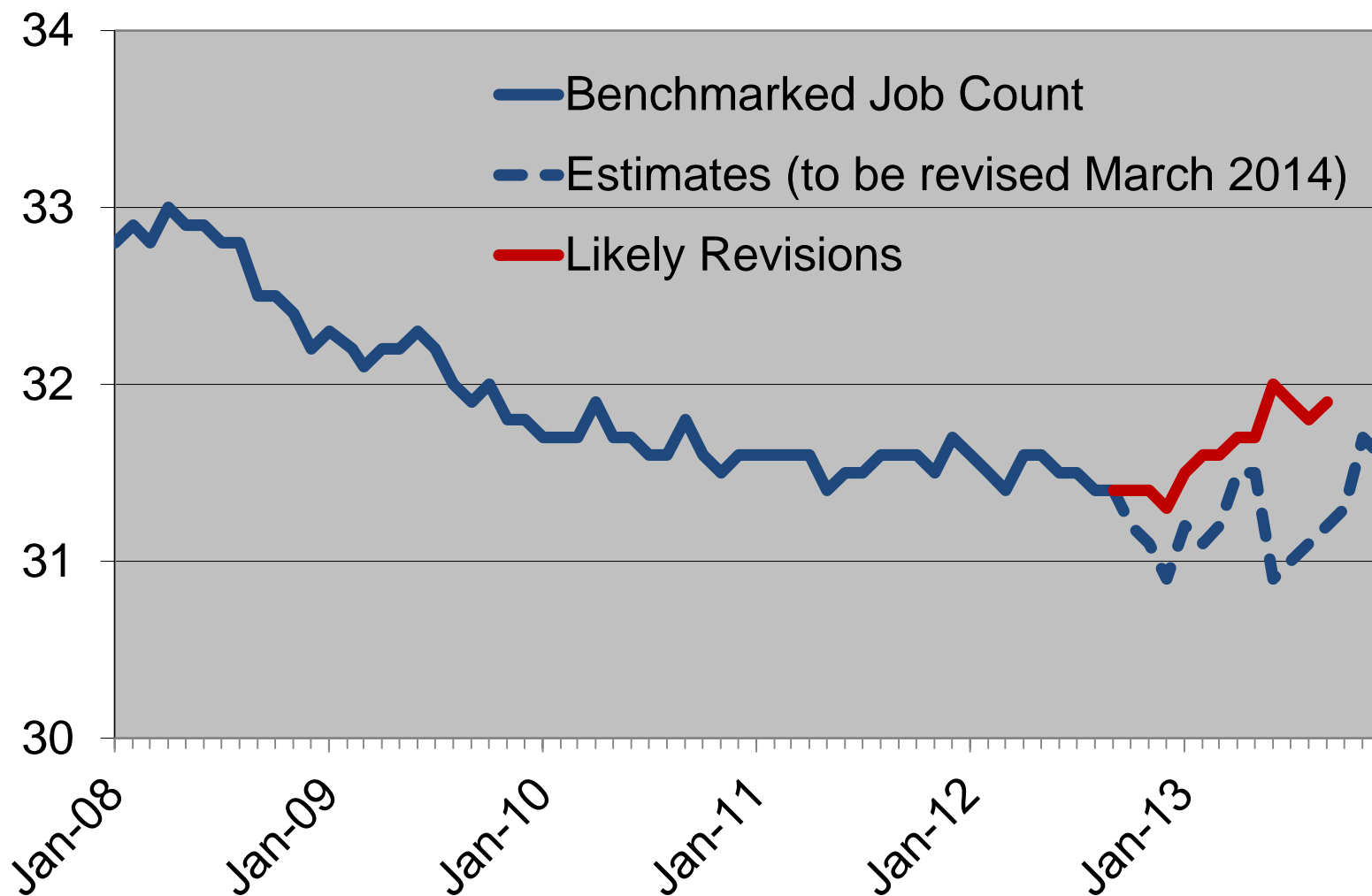
## Educational Services Jobs

*(seasonally adjusted in thousands)*



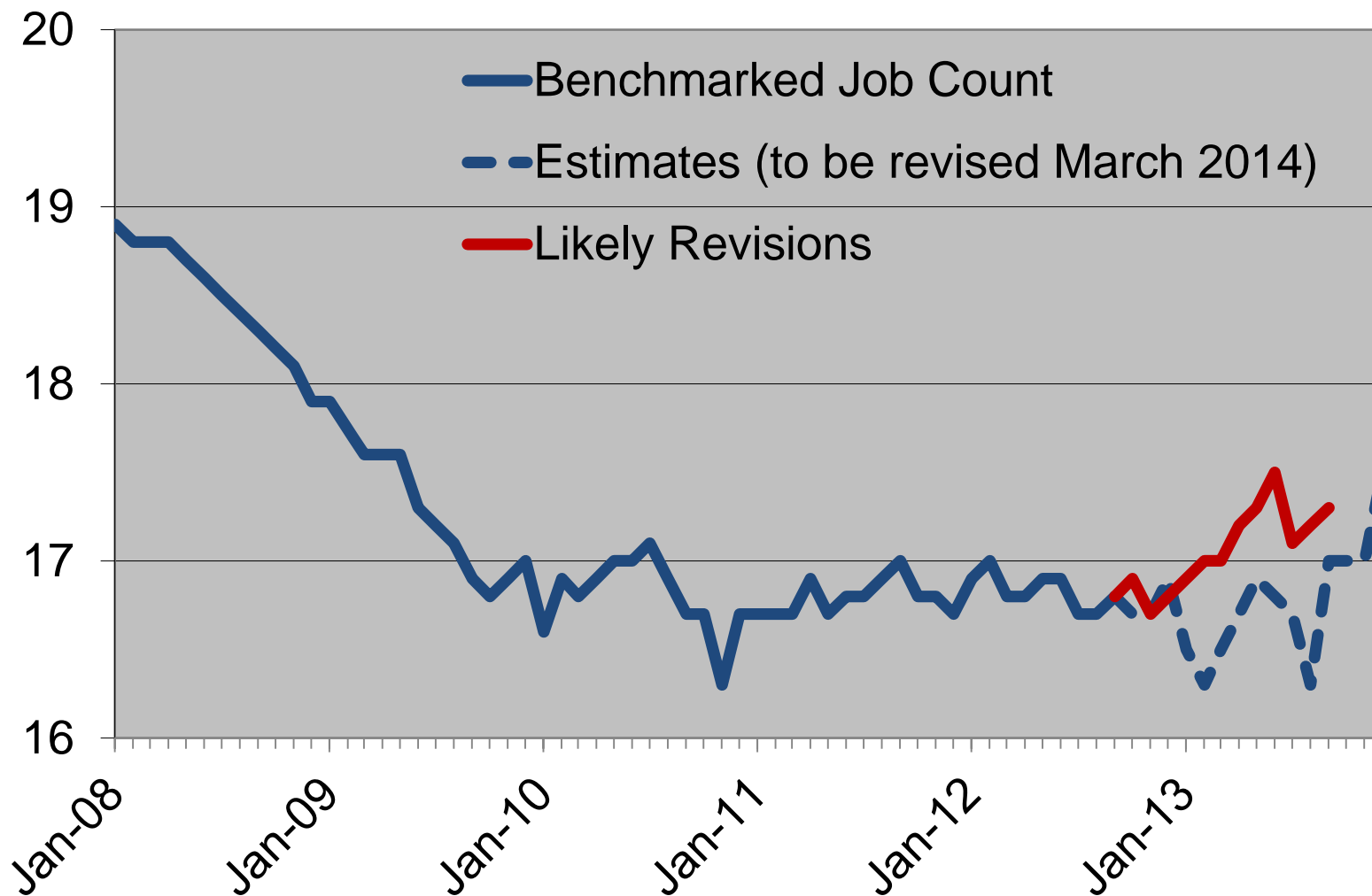
# Financial Activities Jobs

(seasonally adjusted in thousands)



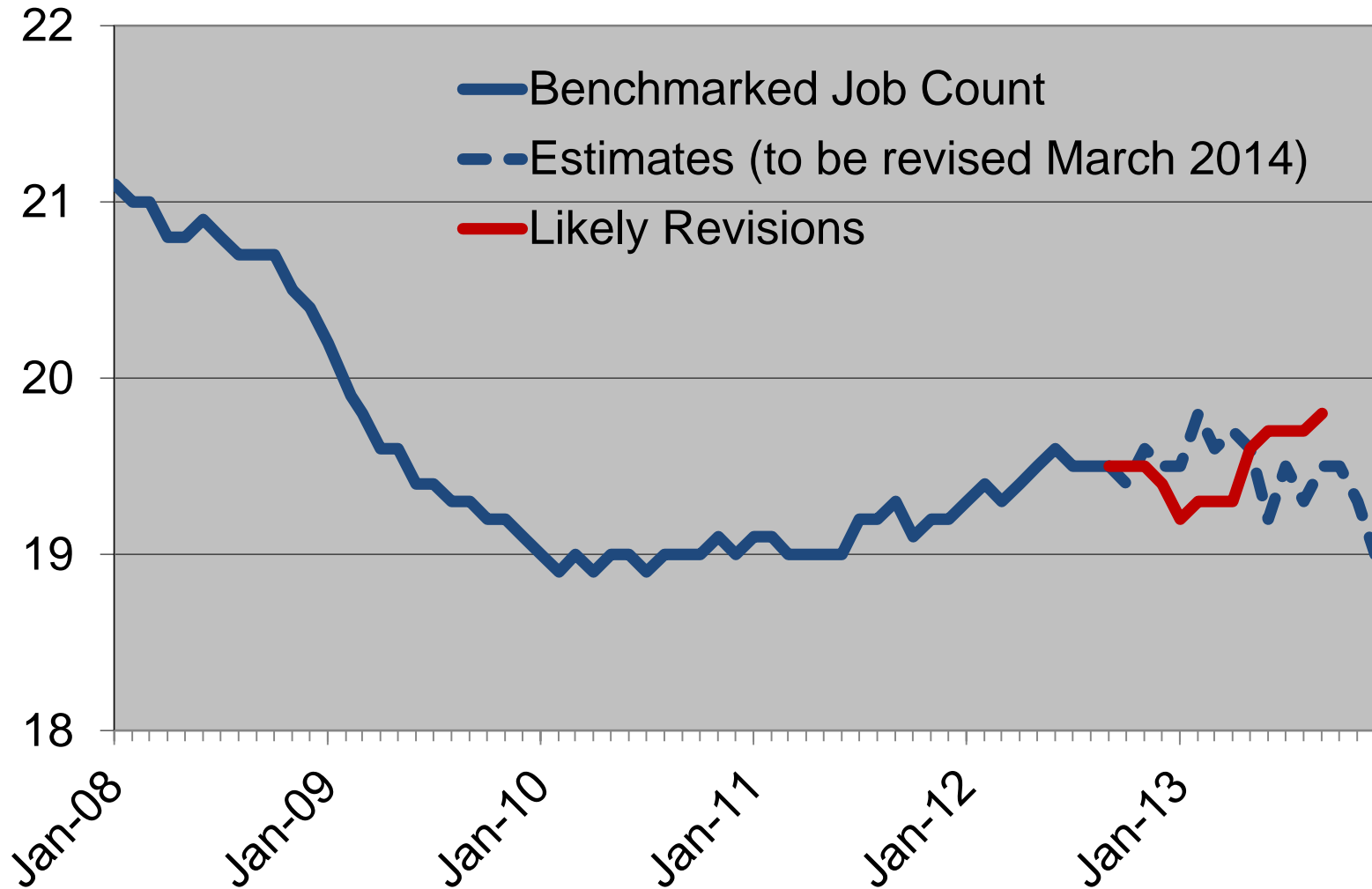
## Transportation, Warehousing & Utilities Jobs

*(seasonally adjusted in thousands)*



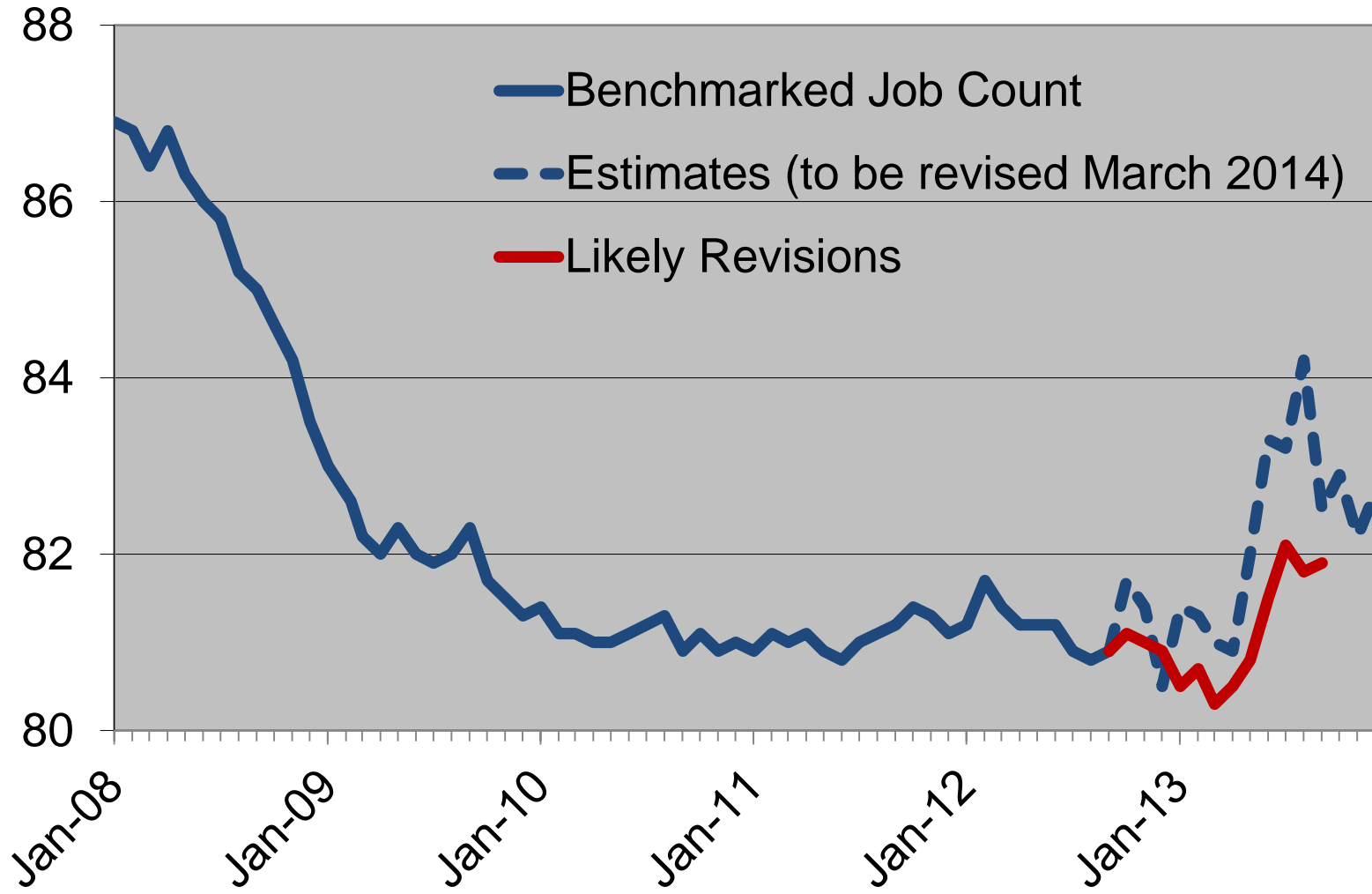
# Wholesale Trade Jobs

(seasonally adjusted in thousands)



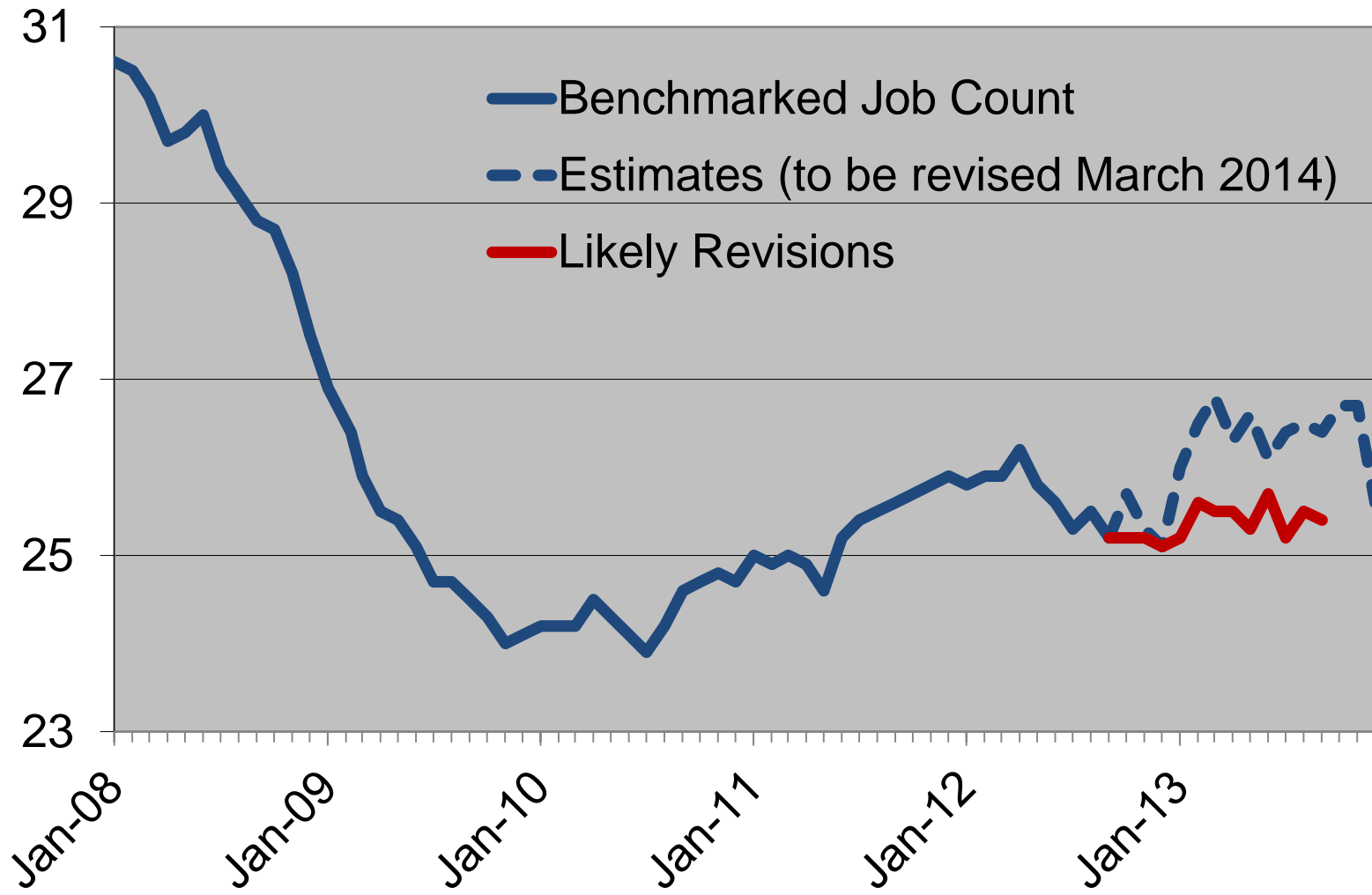
# Retail Trade Jobs

(seasonally adjusted in thousands)



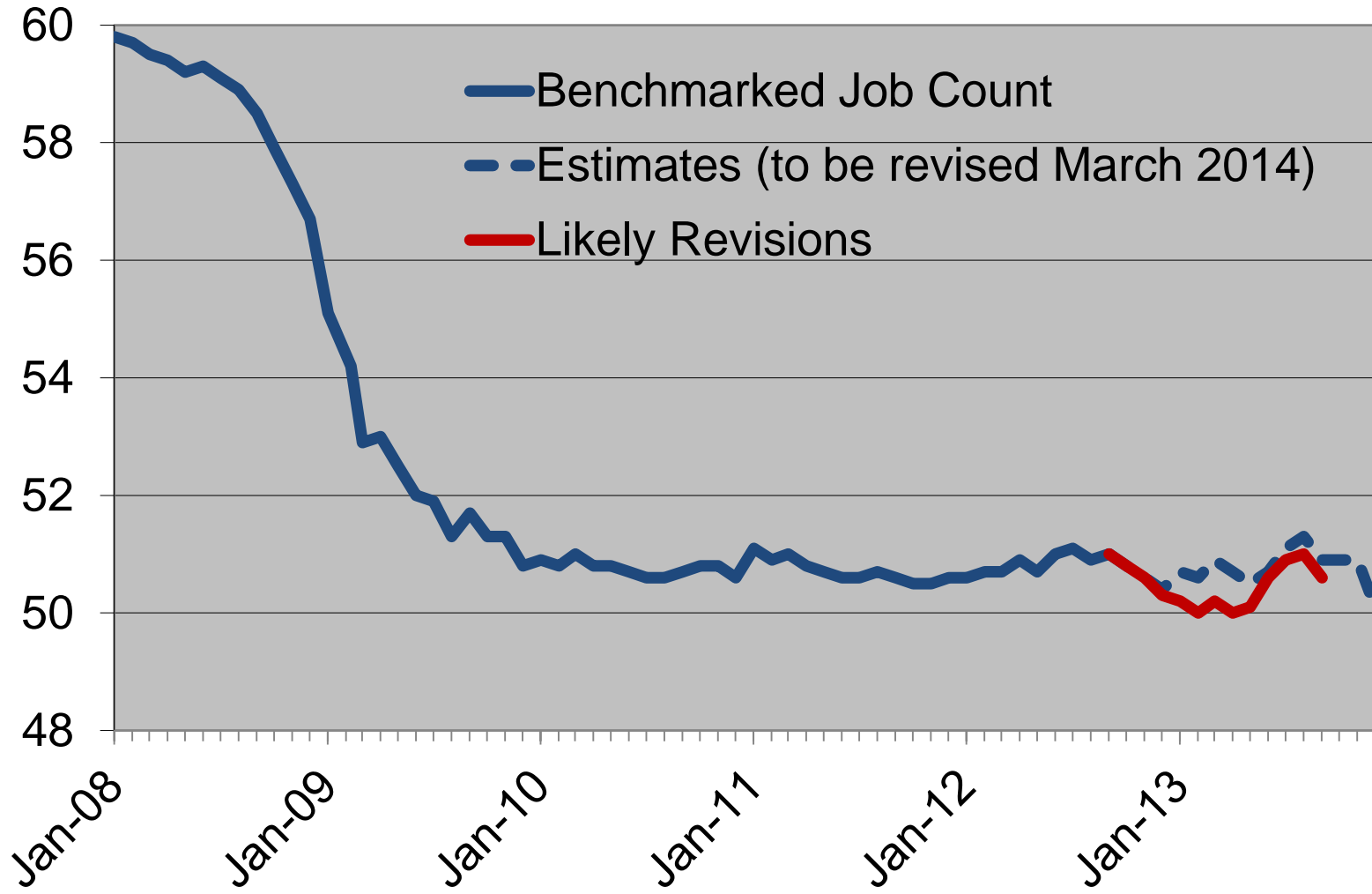
# Construction Jobs

(seasonally adjusted in thousands)



# Manufacturing Jobs

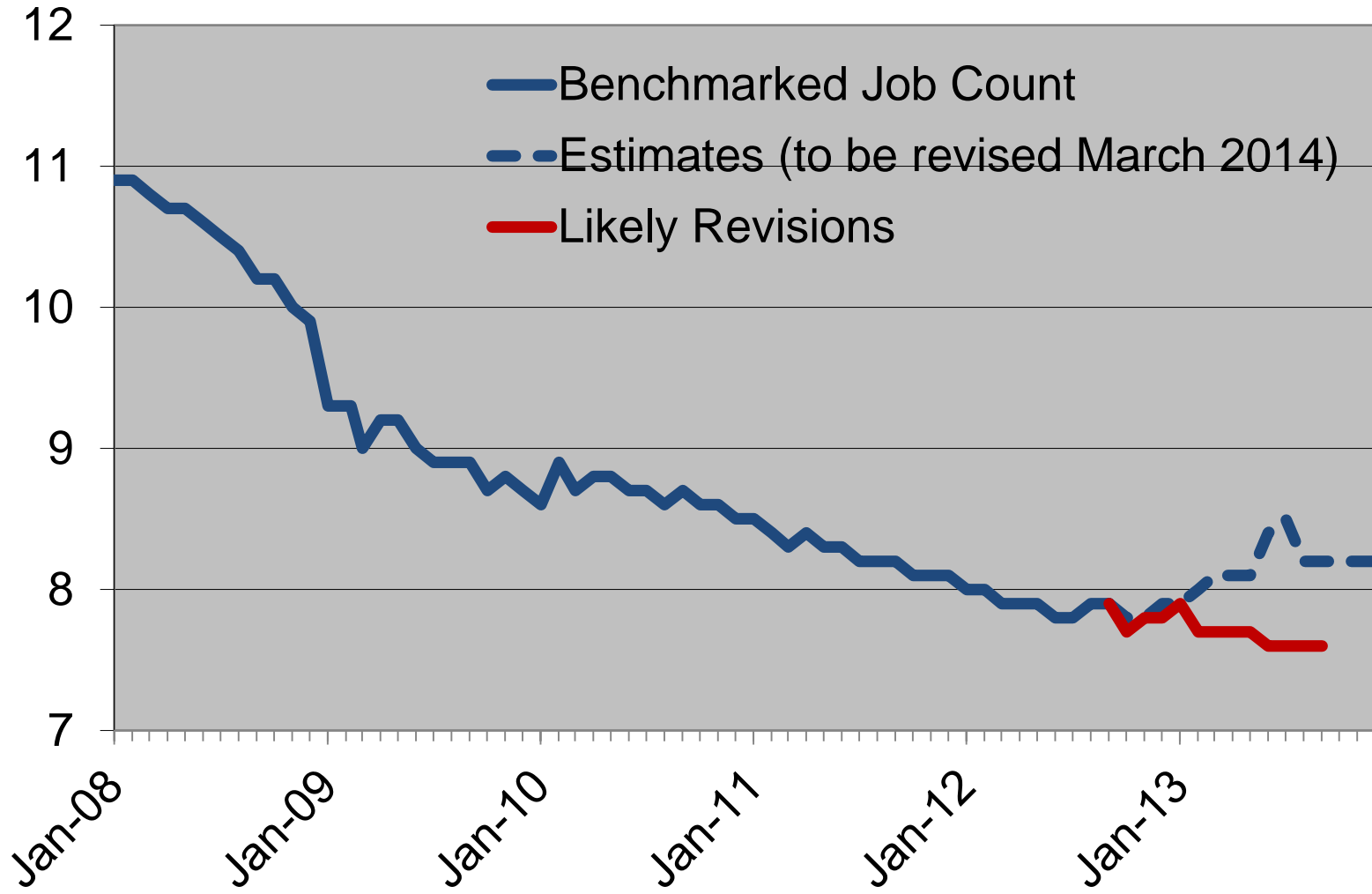
(seasonally adjusted in thousands)





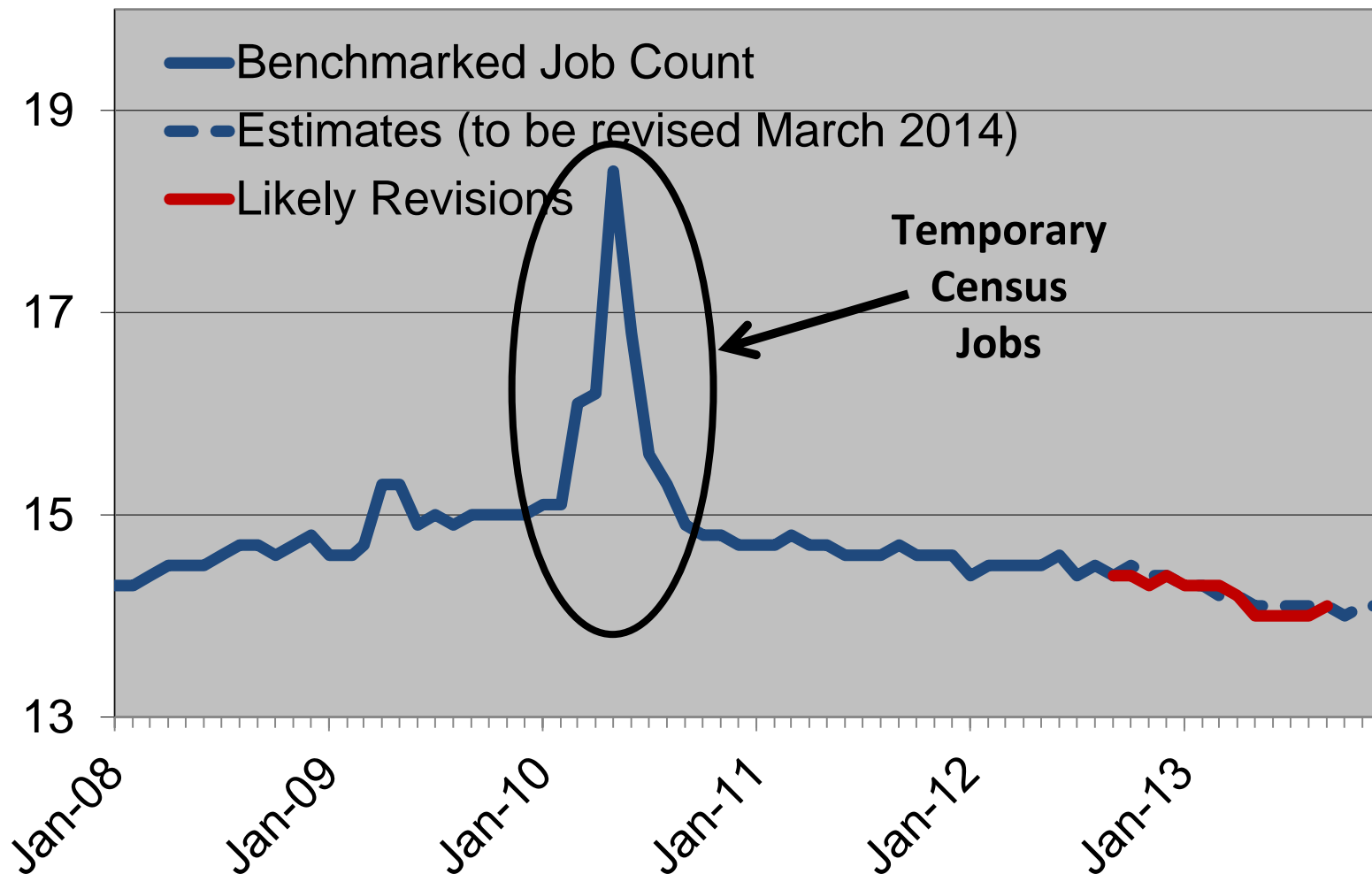
# Information Jobs

*(seasonally adjusted in thousands)*



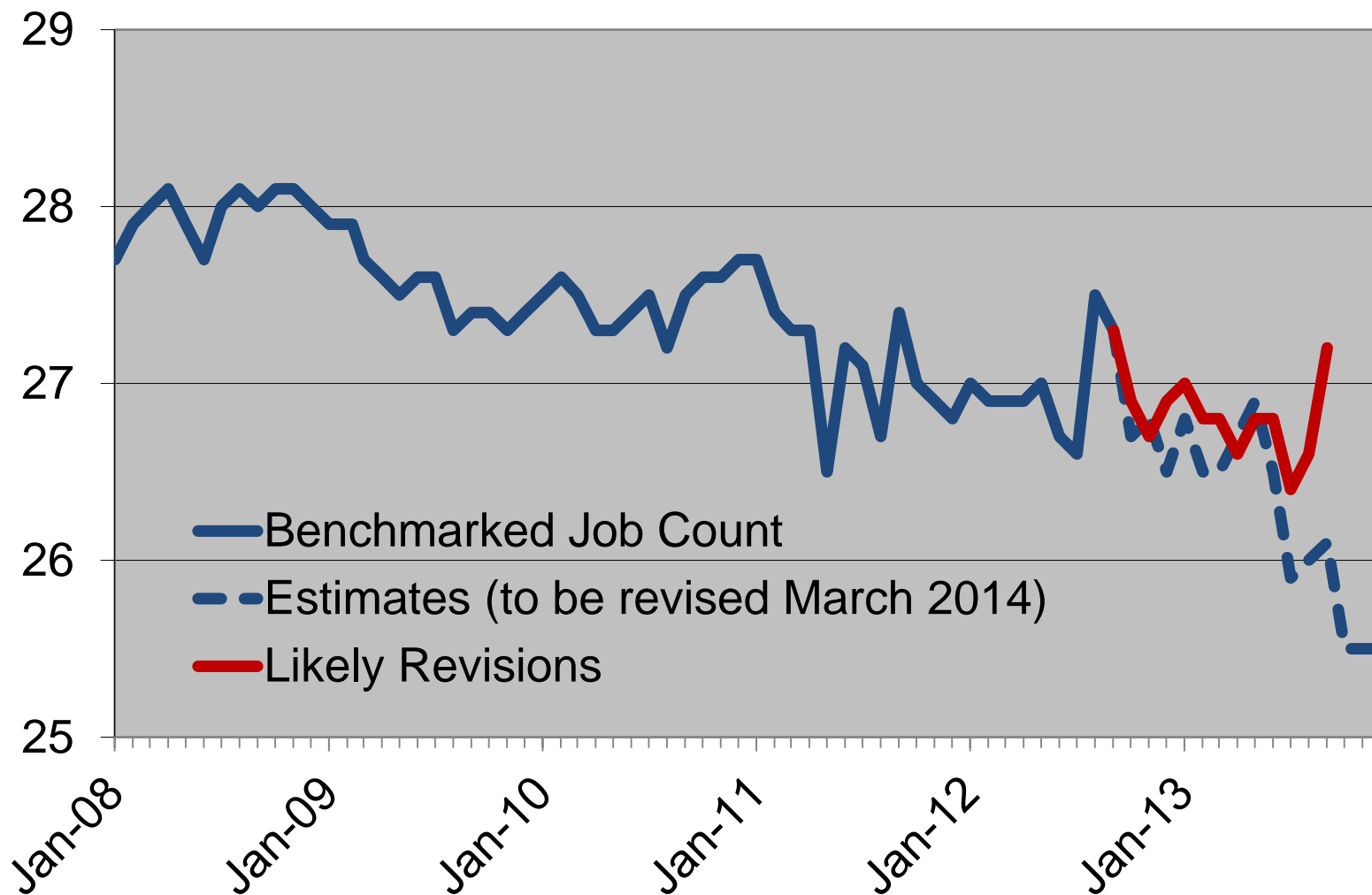
## Federal Government Jobs

(seasonally adjusted in thousands)



# State Government Jobs

(seasonally adjusted in thousands)



## Local Government Jobs

*(seasonally adjusted in thousands)*

