

Habitat Types in 2005 Plan

Alpine

Caves and Mines

Cliff Face and Rocky Outcrops

Coniferous Forest

Deciduous and Mixed Forest

Dry Woodlands and Barrens

Emergent Marsh & Wet

Meadows

Estuarine Emergent Saltmarsh

Estuaries and Bays

Freshwater Lakes and Ponds

Forested Wetland

Grassland, Agricultural, Old Field

Marine Open Water

Mountaintop Forests

Peatlands

Rivers and Streams

Rocky Coastlines and Islands

Shrub/Early Successional Forest

Shrub-scrub Wetland

Unconsolidated Shore

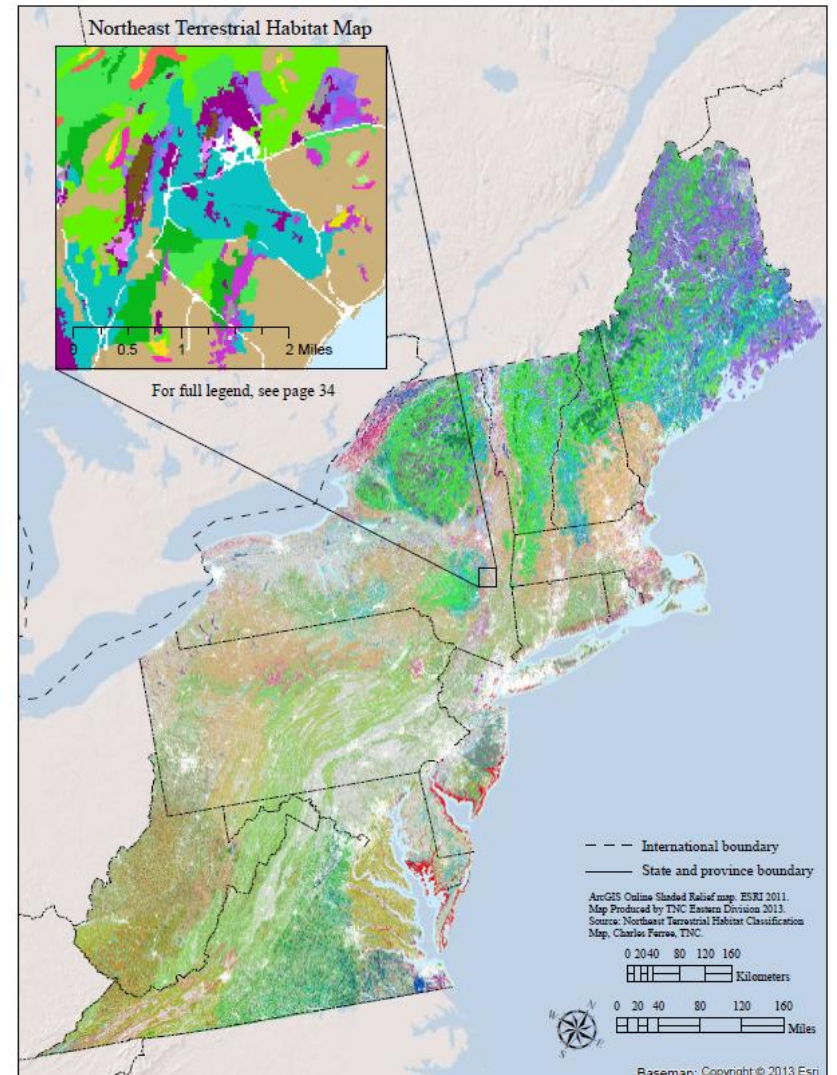
Urban/Suburban

Ecological Systems (TNC & NatureServe)

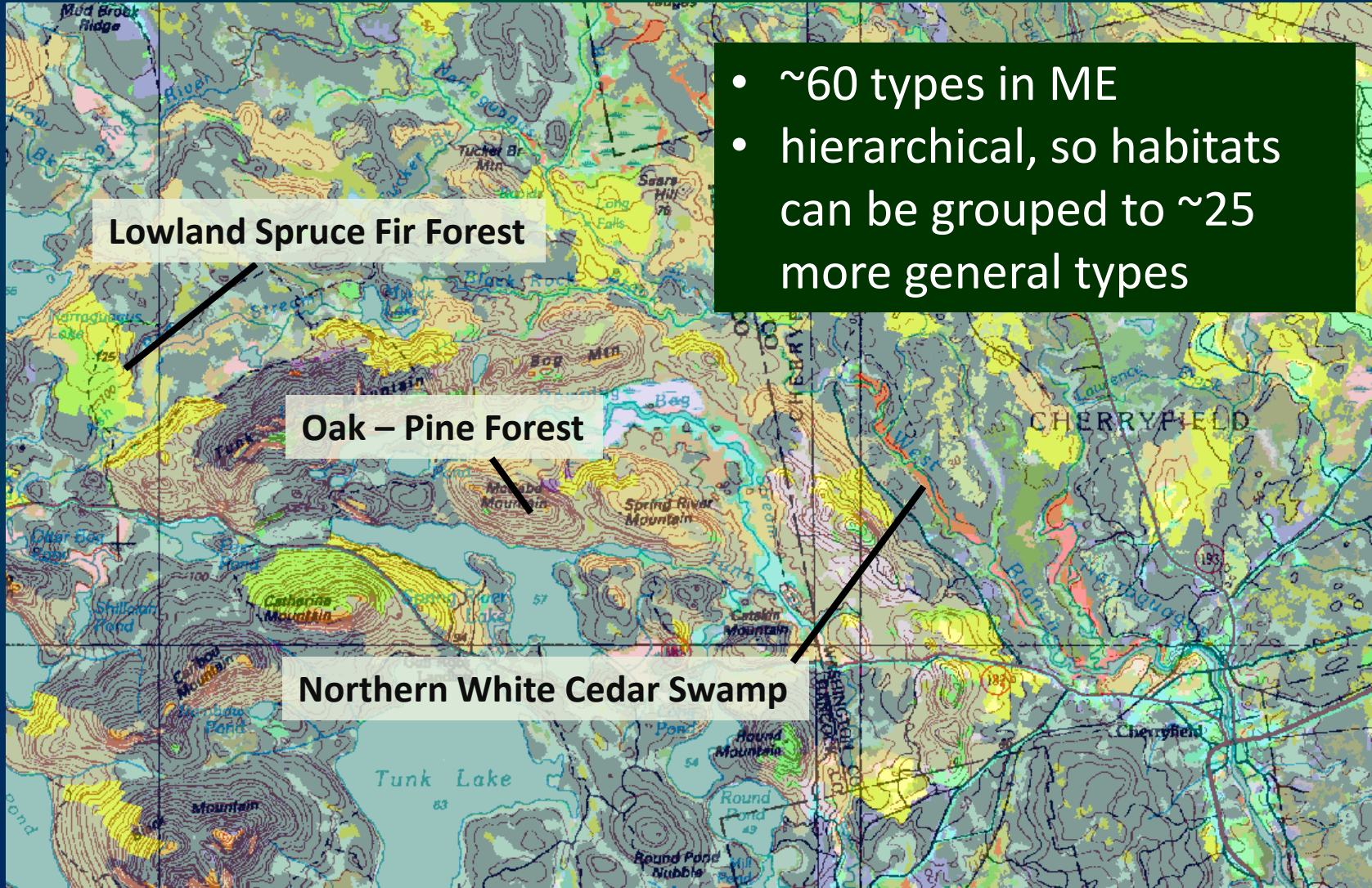


Northeast Habitat Guides: A Companion to the Terrestrial and Aquatic Habitat Maps

The Nature Conservancy, Eastern Conservation Science

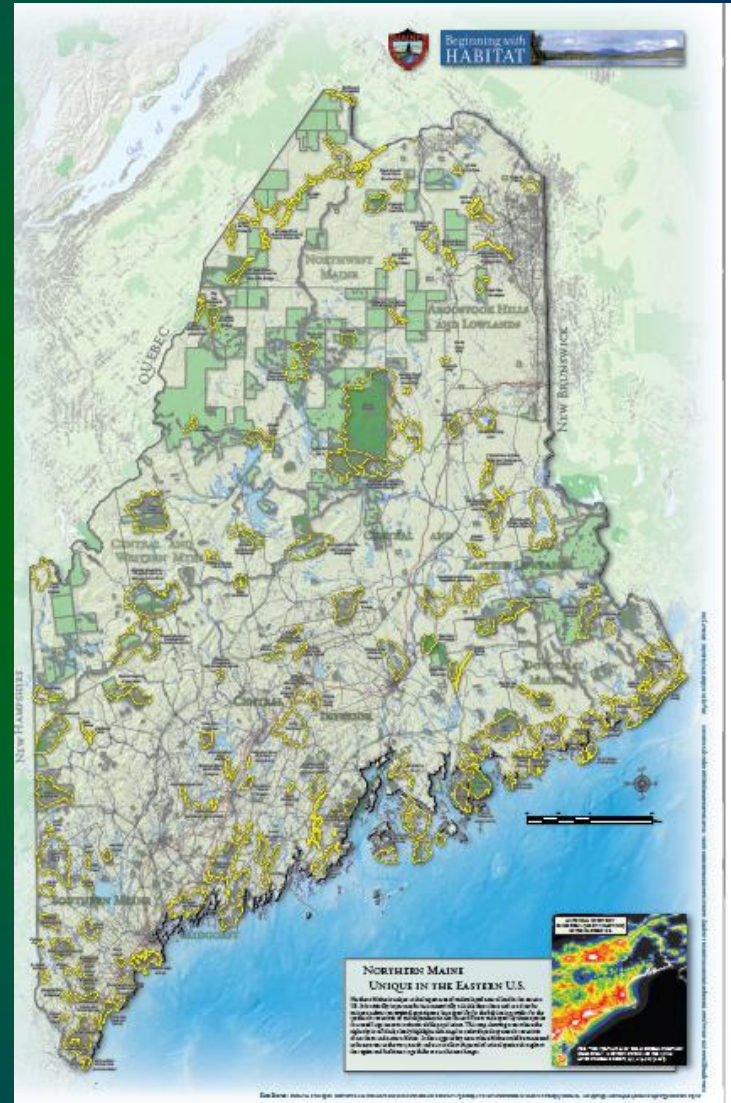


Ecological Systems (TNC & NatureServe)



Focus Areas

- Areas of statewide significance recognized in 2005 SWAP
- Concentrations of rare species, habitats, and their supporting landscape
- Non-regulatory
- Used for guiding conservation actions (land acquisition, municipal planning etc.)



SpeciesStatus_fe : Database (Access 2007 - 2010) - Microsoft Access

File Home Create External Data Database Tools

View Paste Copy Cut Filter Ascending Descending Selection Advanced Refresh All Save Delete More Find Spelling Text Formatting

frmSpeciesStatus

SPECIES: *Sylvilagus transitionalis* (New England Cottontail) MAIN MENU

Population: **No population specified** Species ID: 86 Status ID: 123 SEARCH MENU

Comments: Low and declining numbers due to ongoing habitat loss and fragmentation.

2005 CWCS Priority: 1 2015 SGCN Priority: 1

State Status: E Federal Status: C Tracked:

Habitat Listing History Recommendations

21 Key Habitats (2005 CWSC)

Habitat Type	CWCS Habitat	HabitatID
Primary	Shrub / Early Successional and Regen	US

Northeast Terrestrial Habitat Classification System (NETHCS) - 2015 Wildlife Action Plan

Macrogroup Name

Habitat System **double click row to view definition

ID	2015 Habitat System Name	2005 ID
47	Acadian-North Atlantic Rocky Coast	CC
58	Laurentian-Acadian Lakeshore Beach	CC
48	North Atlantic Cobble Shore	CC
40	Acadian Coastal Salt Marsh	CS

Associate selected habitat systems with species

HABITATS ASSOCIATED WITH SPECIES **double click Habitat Notes field to expand**

MacrogroupName	HabitatSystemName	HabNotes	SpHabID	2005 Hab
Ruderal Shrubland & Grassland	Introduced Shrubland		62	US
Ruderal Shrubland & Grassland	Powerline Right-of-Way		63	US
Plantation and Ruderal Forest	Ruderal Forest - Northern and Central Hardwood and Conifer		64	US
*			(New)	

