

NATIONAL STUDENT CLEARINGHOUSE[®]

StudentTracker[®] for High Schools Aggregate Report

Prepared for
LEE ACADEMY
ACT Code: 200545

LEE ACADEMY

Report Run Date: 05/28/2019 06:52 PM

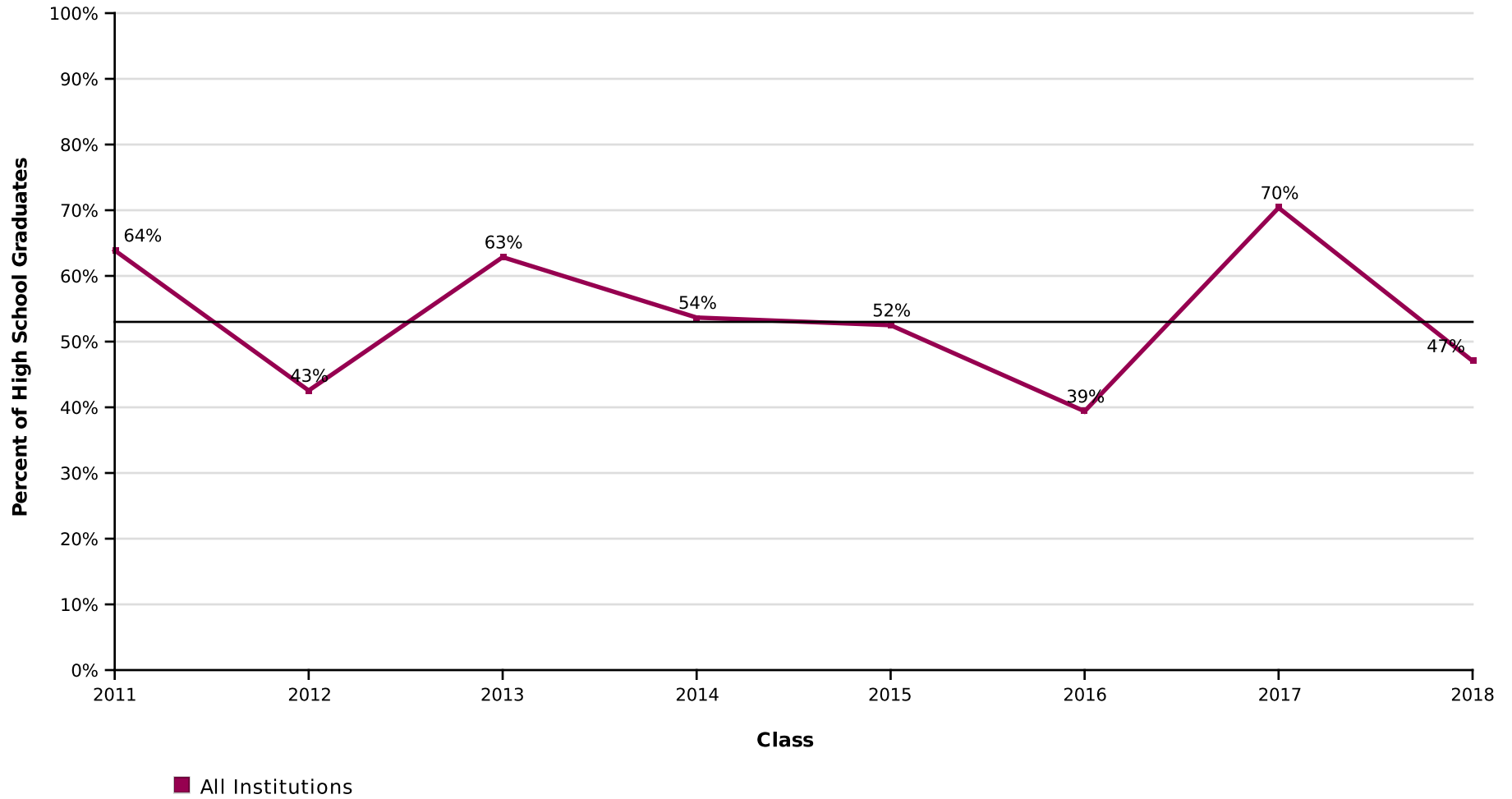
Page 1 of 45

NATIONAL STUDENT
CLEARINGHOUSE[®]

©2012 National Student Clearinghouse. All rights reserved.

Percent of Students Enrolled in College the Fall Immediately After High School

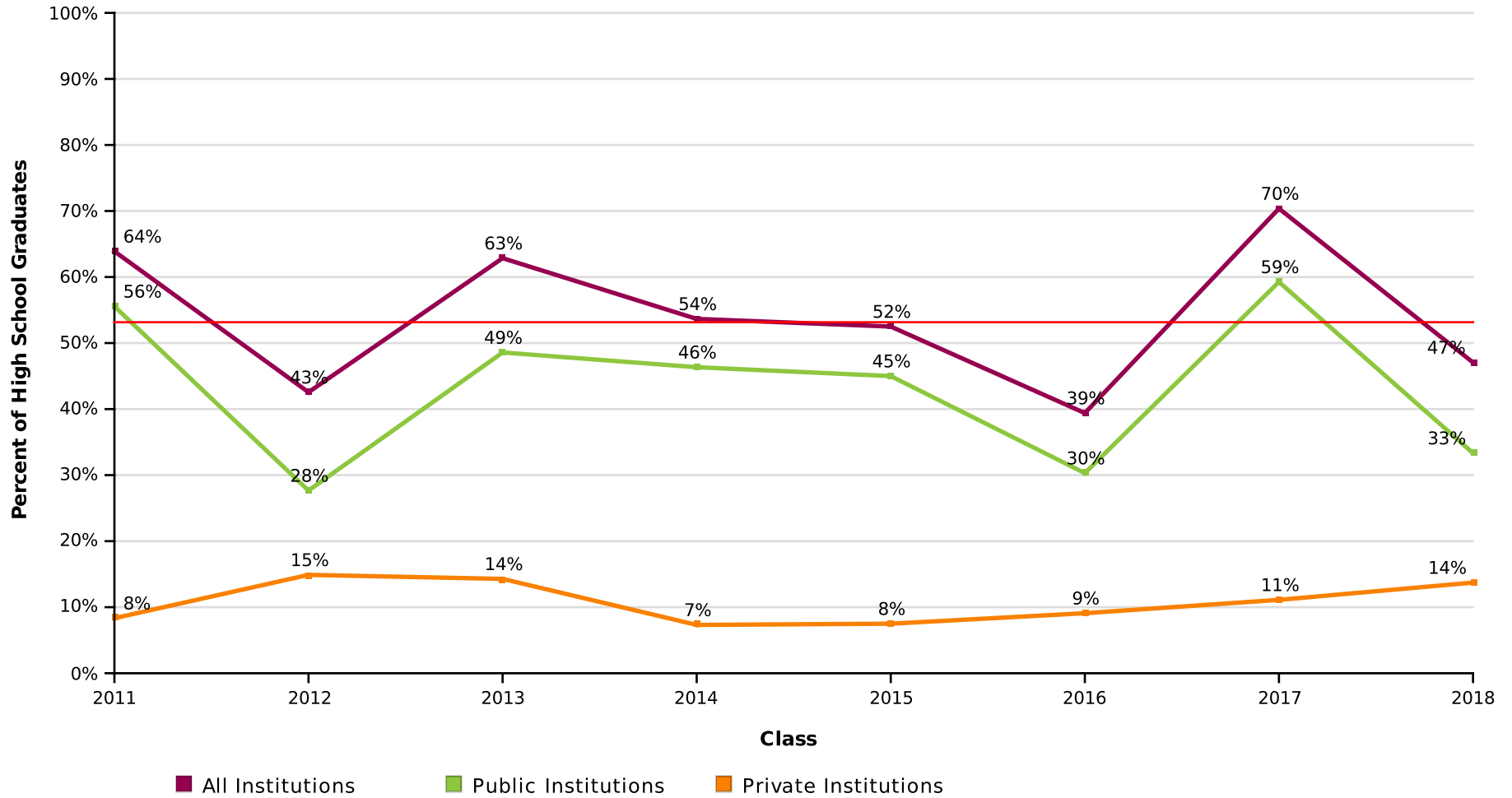
Effective Date = April 11, 2019



AVG = 53%

Percent of Students Enrolled in College the Fall Immediately After High School by Institutional Type

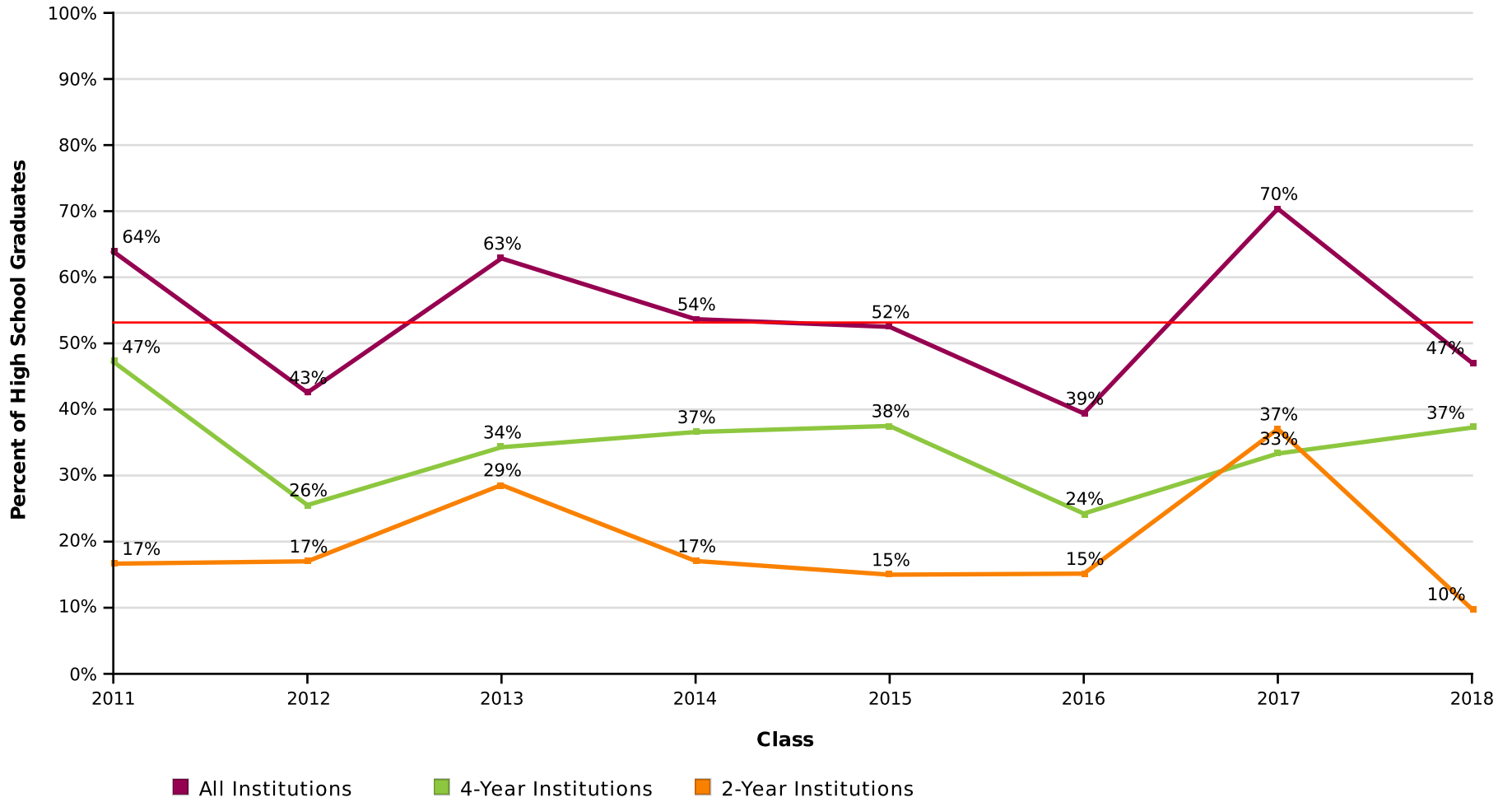
Effective Date = April 11, 2019



AVG = 53%

Percent of Students Enrolled in College the Fall Immediately After High School by Institutional Level

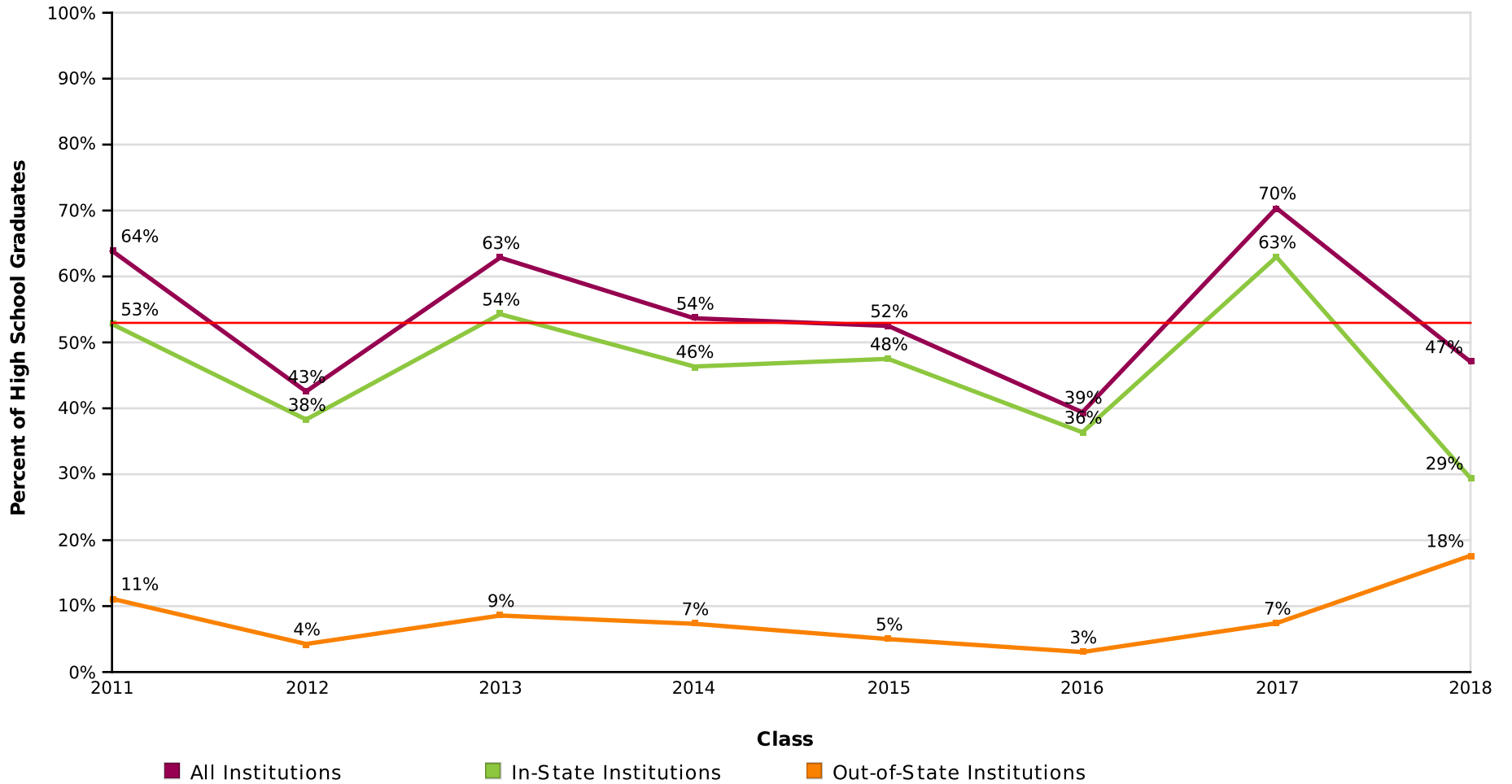
Effective Date = April 11, 2019



AVG = 53%

Percent of Students Enrolled in College the Fall Immediately After High School by Institutional Location

Effective Date = April 11, 2019



AVG = 53%

LEE ACADEMY

Report Run Date: 05/28/2019 06:52 PM

Page 5 of 45

**NATIONAL STUDENT
CLEARINGHOUSE**

©2012 National Student Clearinghouse. All rights reserved.

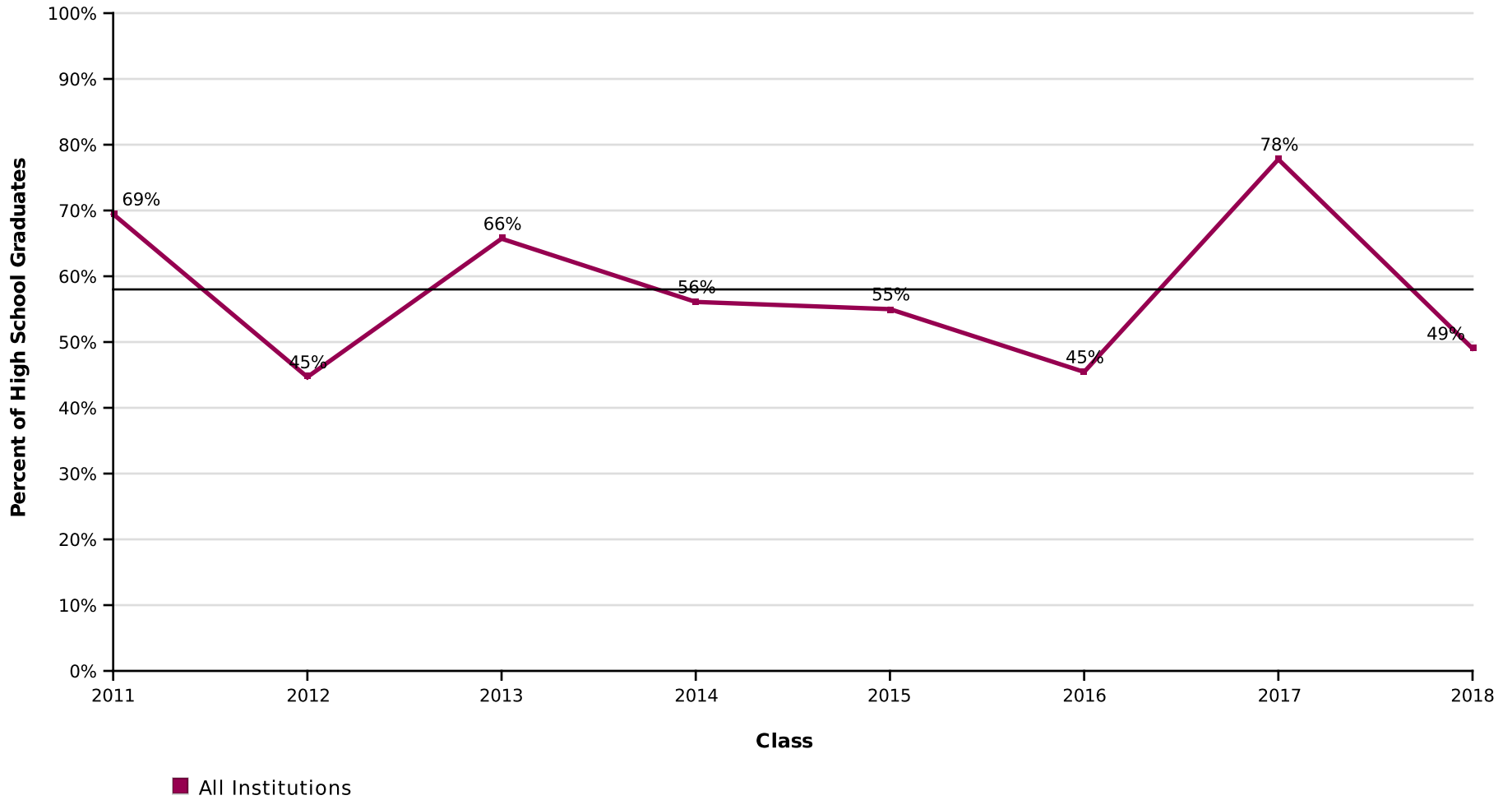
Count of Students Enrolled in College the Fall Immediately After High School

Effective Date = April 11, 2019

Class of	2011	2012	2013	2014	2015	2016	2017	2018
Total in the Class	36	47	35	41	40	33	27	51
Total Enrolled	23	20	22	22	21	13	19	24
Total in Public	20	13	17	19	18	10	16	17
Total in Private	3	7	5	3	3	3	3	7
Total in 4-Year	17	12	12	15	15	8	9	19
Total in 2-Year	6	8	10	7	6	5	10	5
Total In-State	19	18	19	19	19	12	17	15
Total Out-of-State	4	2	3	3	2	1	2	9

Percent of Students Enrolled in College at Any Time During the First Year After High School

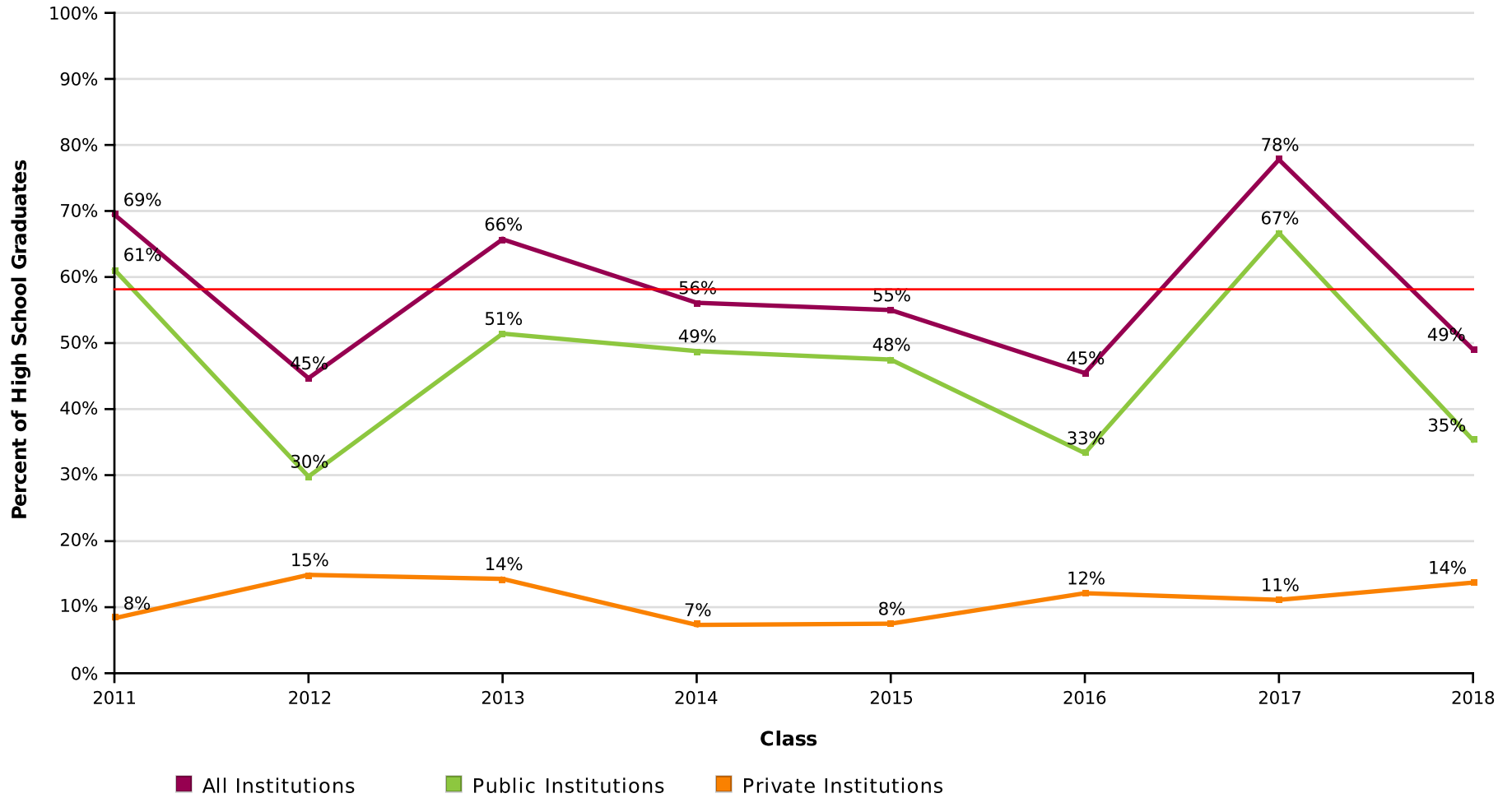
Effective Date = April 11, 2019



AVG = 58%

Percent of Students Enrolled in College at Any Time During the First Year After High School by Institutional Type

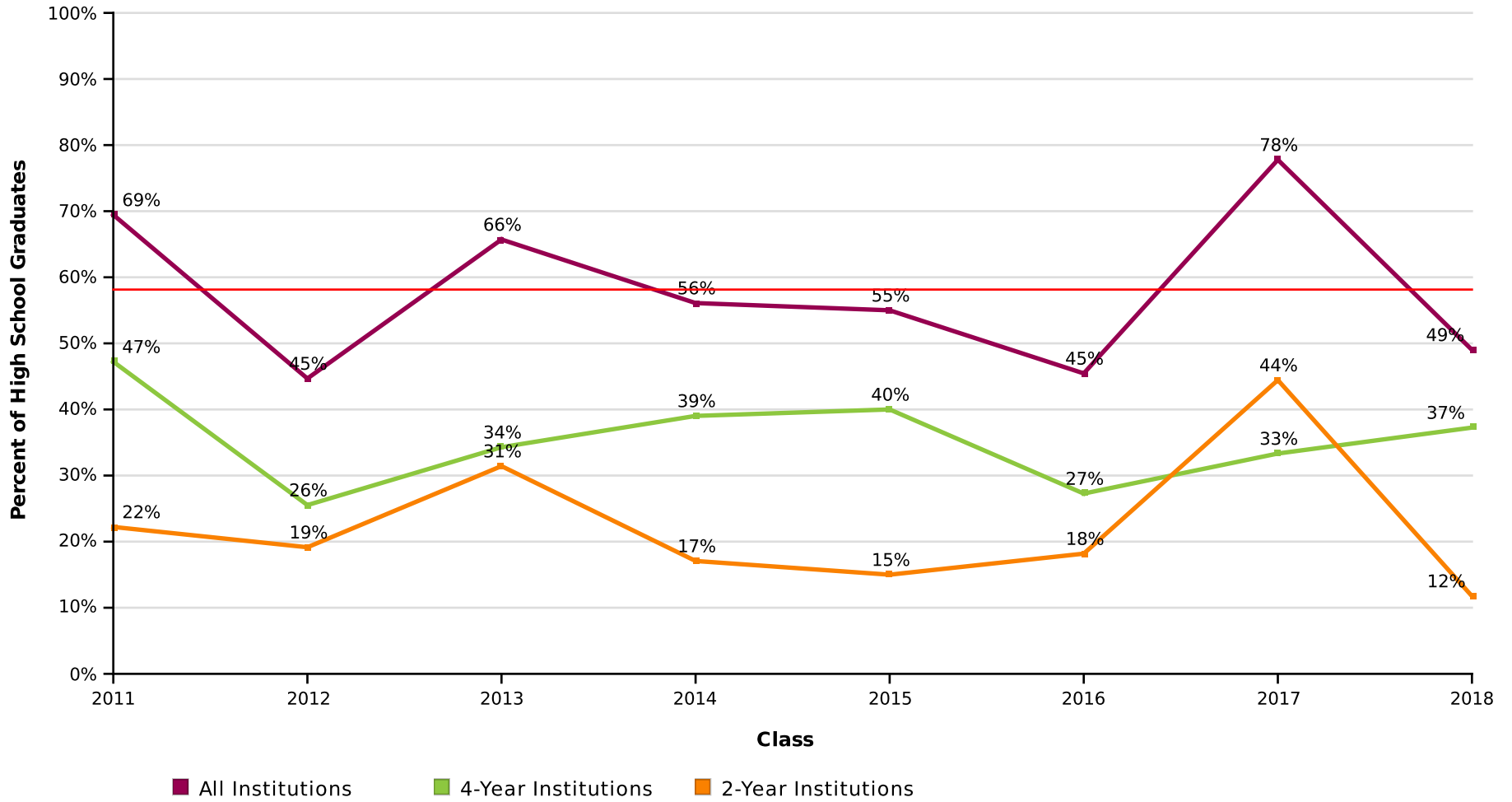
Effective Date = April 11, 2019



AVG = 58%

Percent of Students Enrolled in College at Any Time During the First Year After High School by Institutional Level

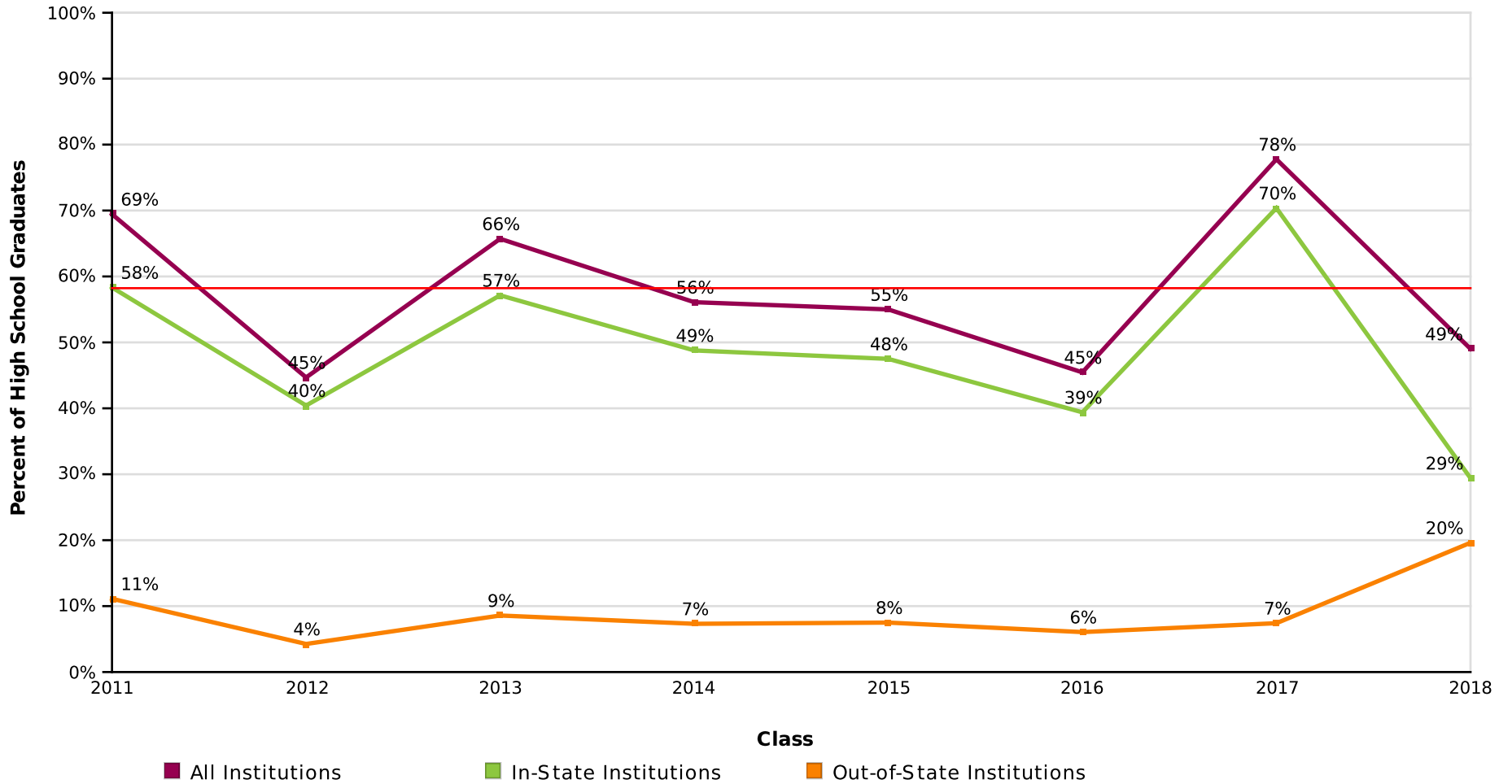
Effective Date = April 11, 2019



AVG = 58%

Percent of Students Enrolled in College at Any Time During the First Year After High School by Institutional Location

Effective Date = April 11, 2019



AVG = 58%

Count of Students Enrolled in College at Any Time During the First Year After High School

Effective Date = April 11, 2019

Class of	2011	2012	2013	2014	2015	2016	2017	2018
Total in the Class	36	47	35	41	40	33	27	51
Total Enrolled	25	21	23	23	22	15	21	25
Total in Public	22	14	18	20	19	11	18	18
Total in Private	3	7	5	3	3	4	3	7
Total in 4-Year	17	12	12	16	16	9	9	19
Total in 2-Year	8	9	11	7	6	6	12	6
Total In-State	21	19	20	20	19	13	19	15
Total Out-Of-State	4	2	3	3	3	2	2	10

Percent of Students Enrolled in College at Any Time During the First Two Years After High School

Effective Date = April 11, 2019



AVG = 60%

LEE ACADEMY

Report Run Date: 05/28/2019 06:52 PM

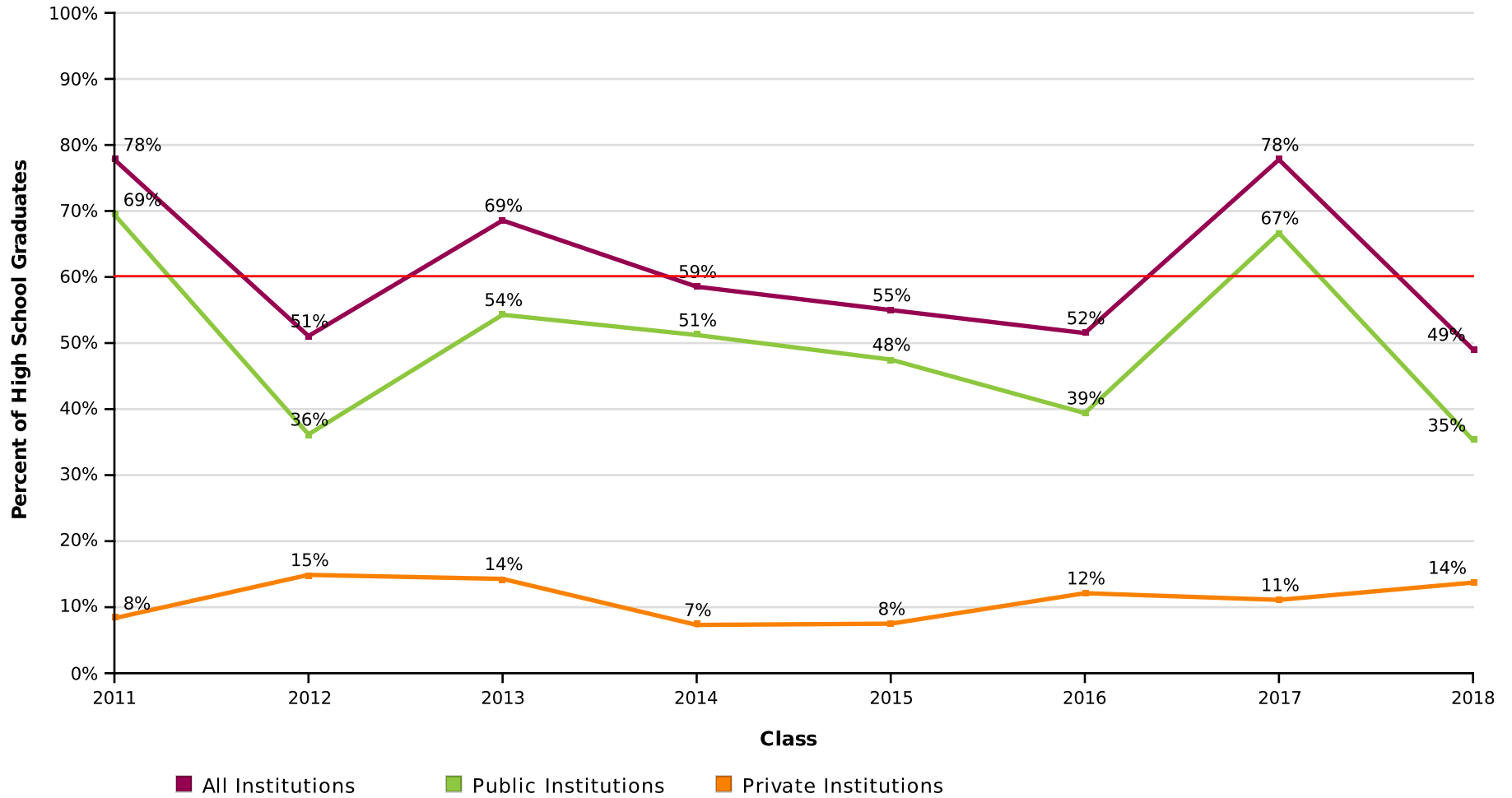
Page 12 of 45

NATIONAL STUDENT
CLEARINGHOUSE

©2012 National Student Clearinghouse. All rights reserved.

Percent of Students Enrolled in College at Any Time During the First Two Years After High School by Institutional Type

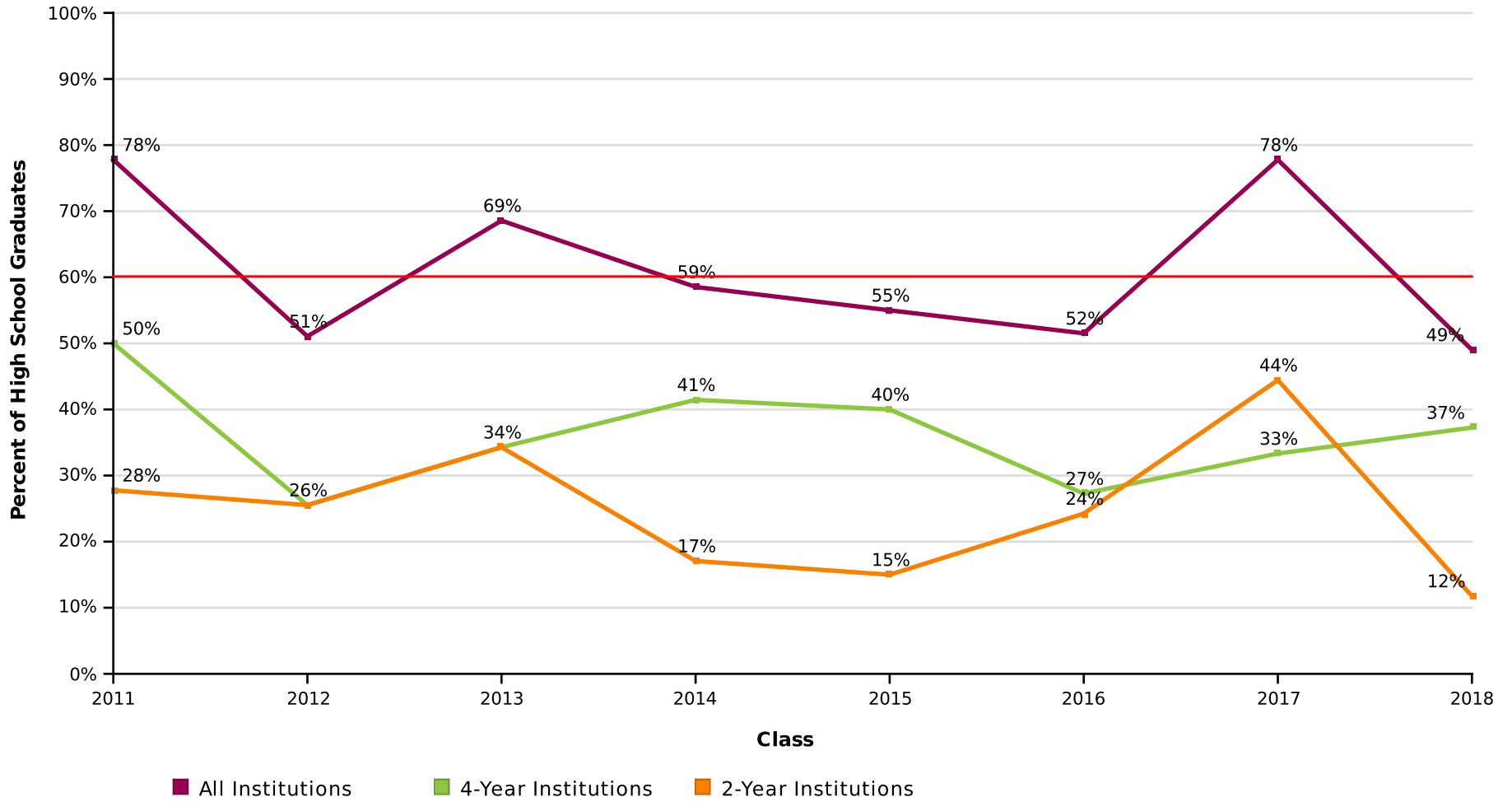
Effective Date = April 11, 2019



AVG = 60%

Percent of Students Enrolled in College at Any Time During the First Two Years After High School by Institutional Level

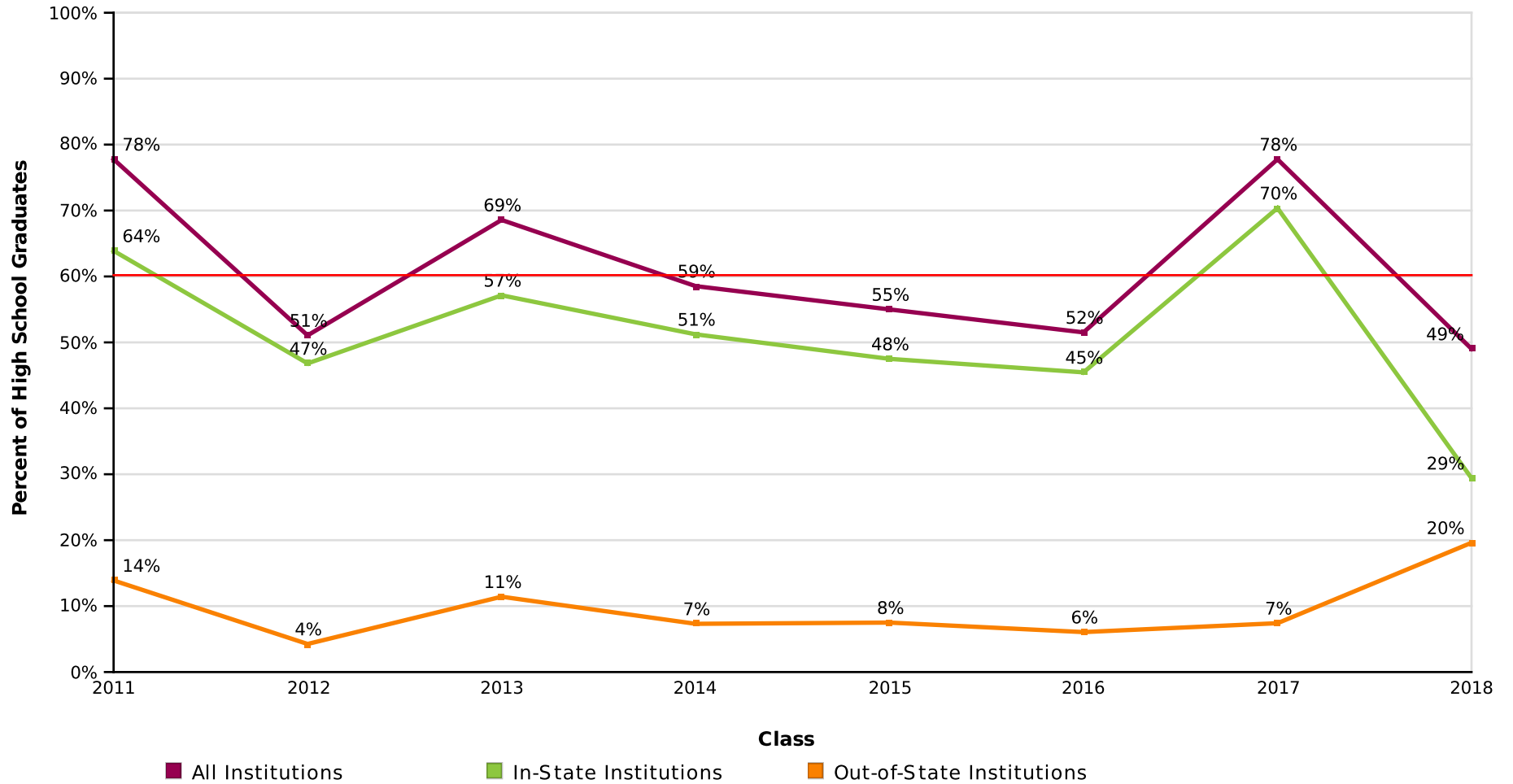
Effective Date = April 11, 2019



AVG = 60%

Percent of Students Enrolled in College at Any Time During the First Two Years After High School by Institutional Location

Effective Date = April 11, 2019



AVG = 60%

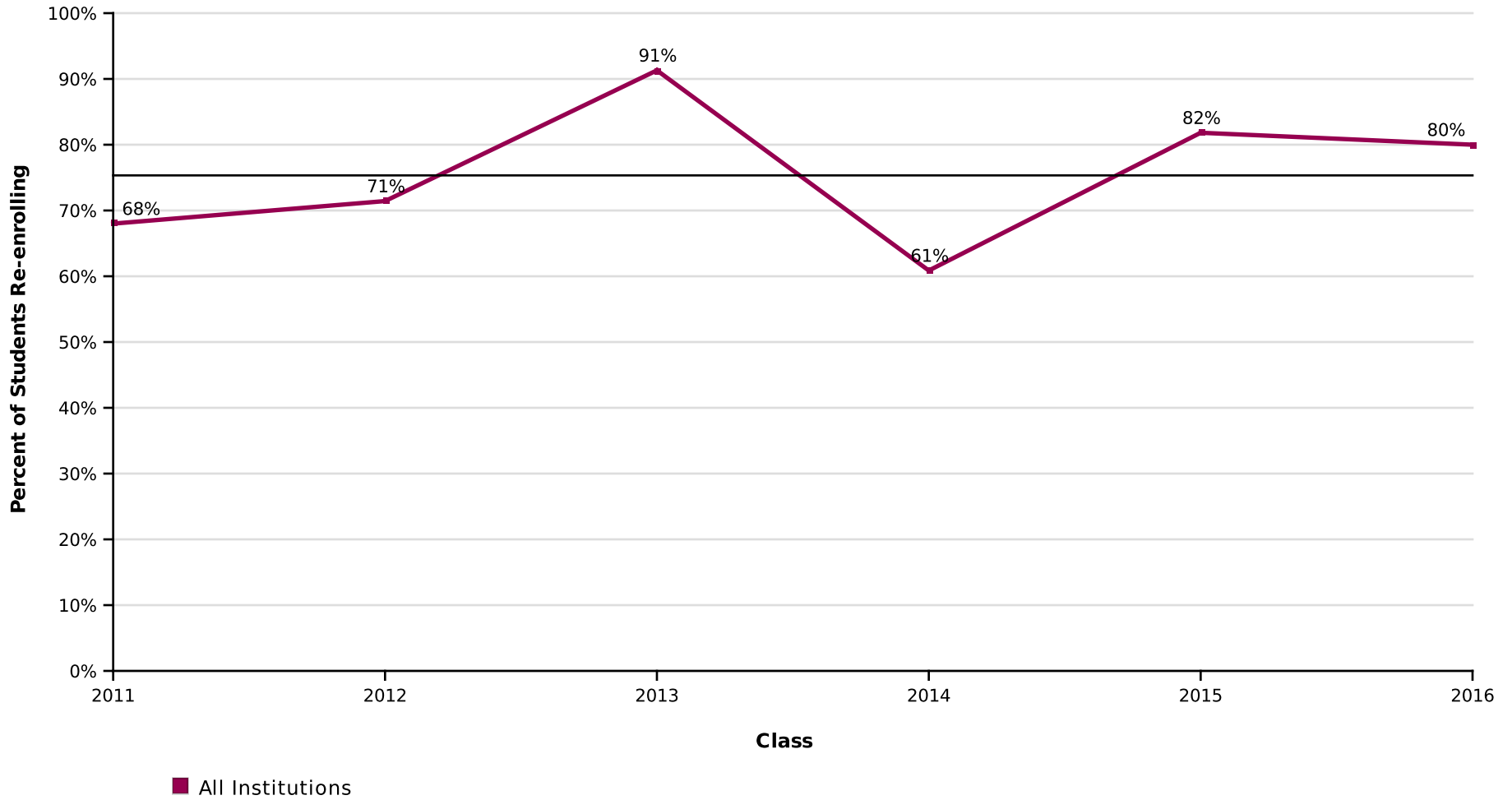
Count of Students Enrolled in College at Any Time During the First Two Years After High School

Effective Date = April 11, 2019

Class of	2011	2012	2013	2014	2015	2016	2017	2018
Total in the Class	36	47	35	41	40	33	27	51
Total Enrolled	28	24	24	24	22	17	21	25
Total in Public	25	17	19	21	19	13	18	18
Total in Private	3	7	5	3	3	4	3	7
Total in 4-Year	18	12	12	17	16	9	9	19
Total in 2-Year	10	12	12	7	6	8	12	6
Total In-State	23	22	20	21	19	15	19	15
Total Out-of-State	5	2	4	3	3	2	2	10

Percent of Students Enrolled in College the First Year After High School Who Returned for a Second Year (Freshman to Sophomore Persistence)

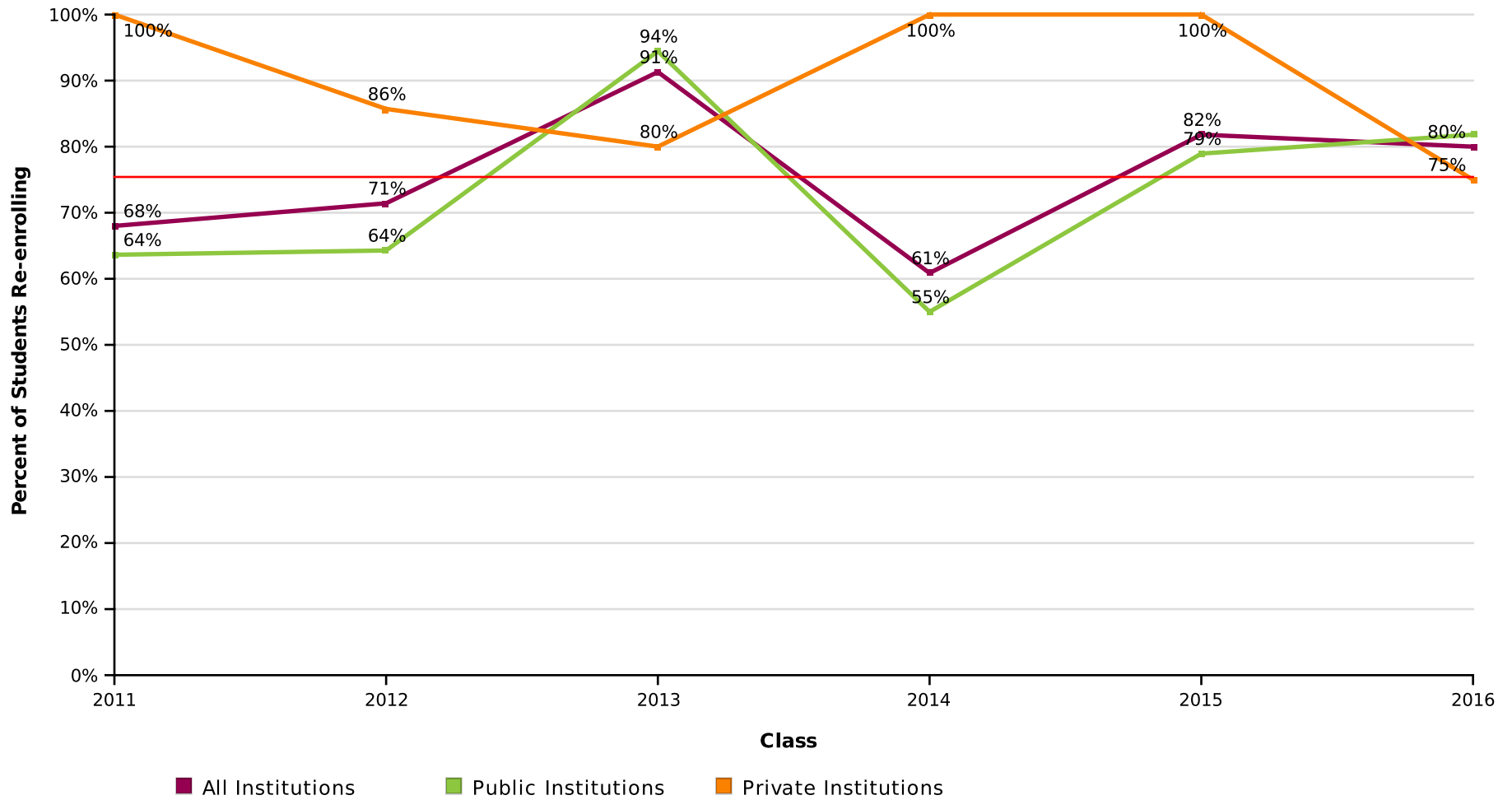
Effective Date = April 11, 2019



AVG = 75%

Percent of Students Enrolled in College the First Year After High School Who Returned for a Second Year (Freshman to Sophomore Persistence) by Institutional Type

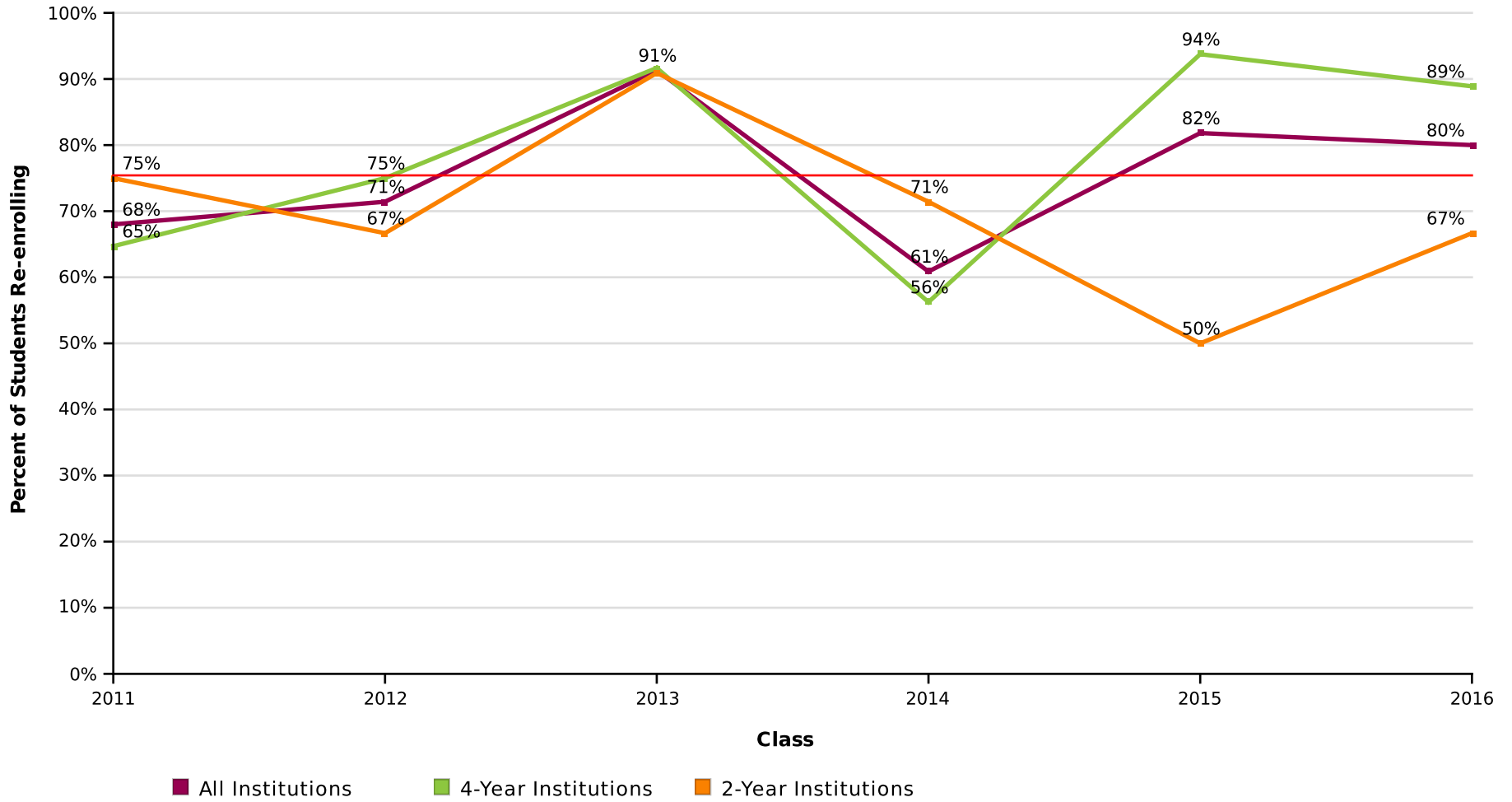
Effective Date = April 11, 2019



AVG = 75%

Percent of Students Enrolled in College the First Year After High School Who Returned for a Second Year (Freshman to Sophomore Persistence) by Institutional Level

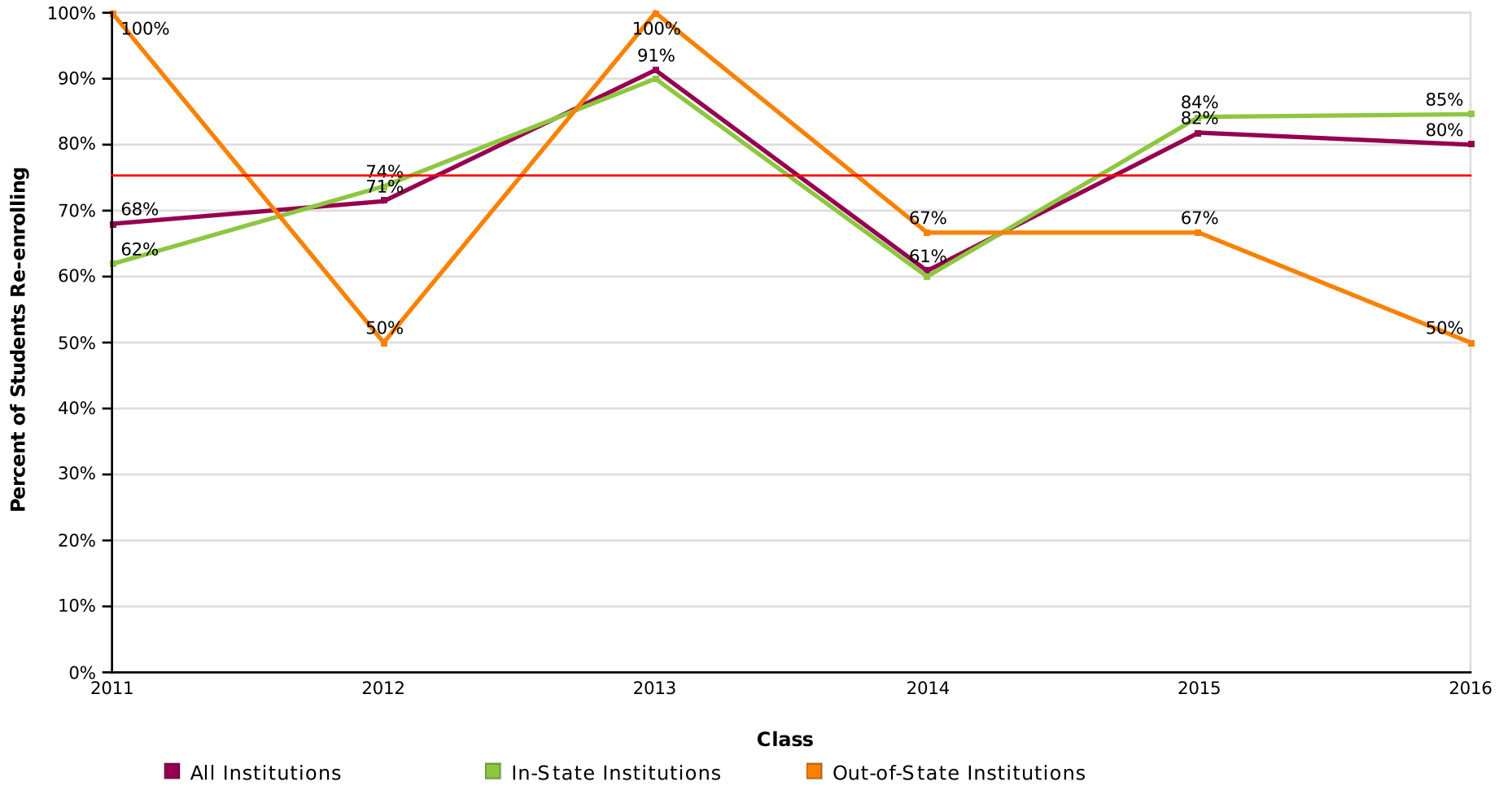
Effective Date = April 11, 2019



AVG = 75%

Percent of Students Enrolled in College the First Year After High School Who Returned for a Second Year (Freshman to Sophomore Persistence) by Institutional Location

Effective Date = April 11, 2019



AVG = 75%

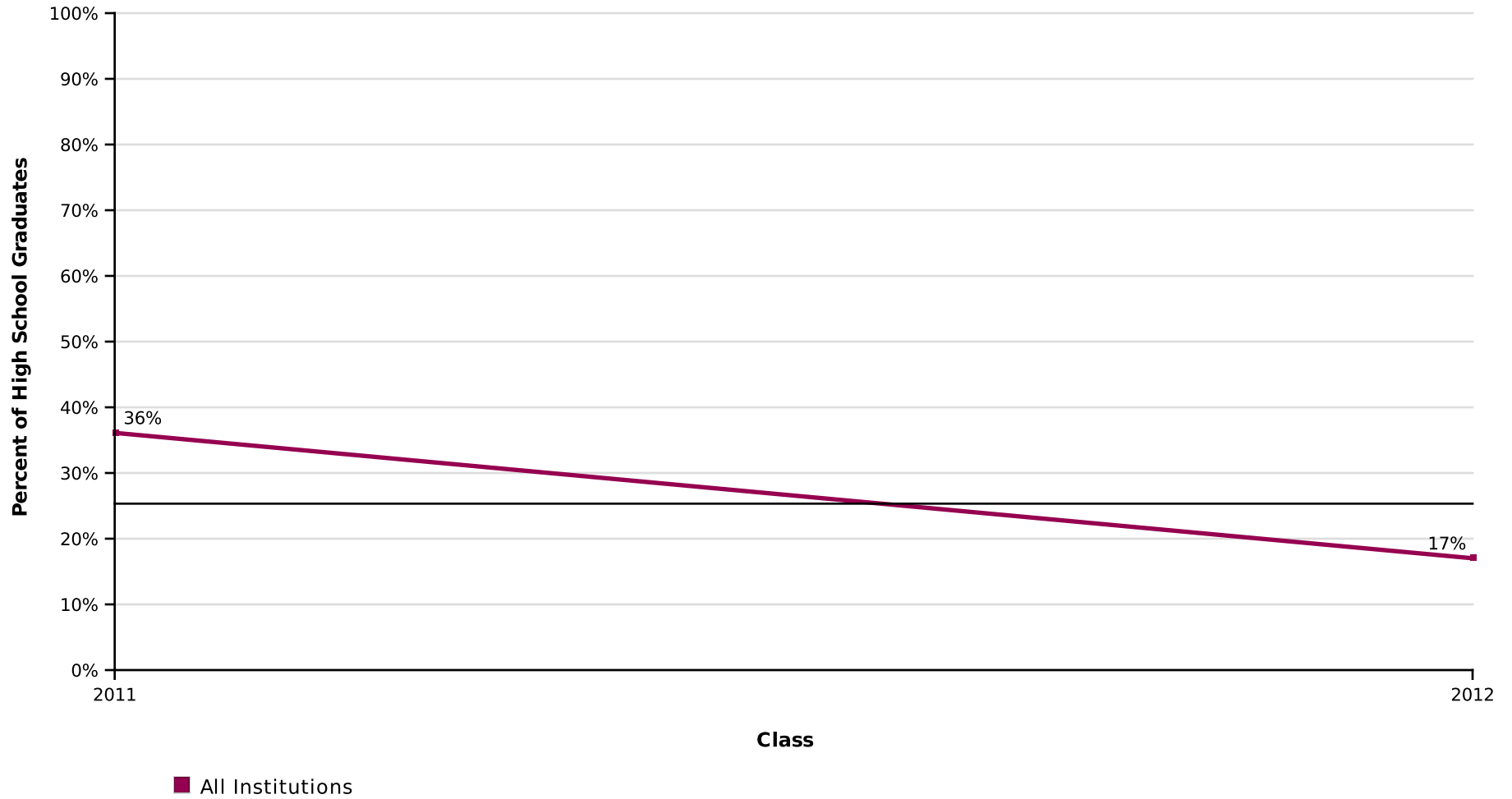
**Count of Students Enrolled in College the First Year After High School Who Returned
for a Second Year (Freshman to Sophomore Persistence)**

Effective Date = April 11, 2019

Class of	2011	2012	2013	2014	2015	2016
Total in the Class	36	47	35	41	40	33
Enrolled Anywhere 1st Year	25	21	23	23	22	15
Enrolled Anywhere 2nd Year	17	15	21	14	18	12
In Public 1st Year	22	14	18	20	19	11
Enrolled Anywhere 2nd Year	14	9	17	11	15	9
In Private 1st Year	3	7	5	3	3	4
Enrolled Anywhere 2nd Year	3	6	4	3	3	3
In 4-Year 1st Year	17	12	12	16	16	9
Enrolled Anywhere 2nd Year	11	9	11	9	15	8
In 2-Year 1st Year	8	9	11	7	6	6
Enrolled Anywhere 2nd Year	6	6	10	5	3	4
In-State 1st Year	21	19	20	20	19	13
Enrolled Anywhere 2nd Year	13	14	18	12	16	11
Out-of-State 1st Year	4	2	3	3	3	2
Enrolled Anywhere 2nd Year	4	1	3	2	2	1

Percent of High School Class Who Completed a Degree Within Six Years

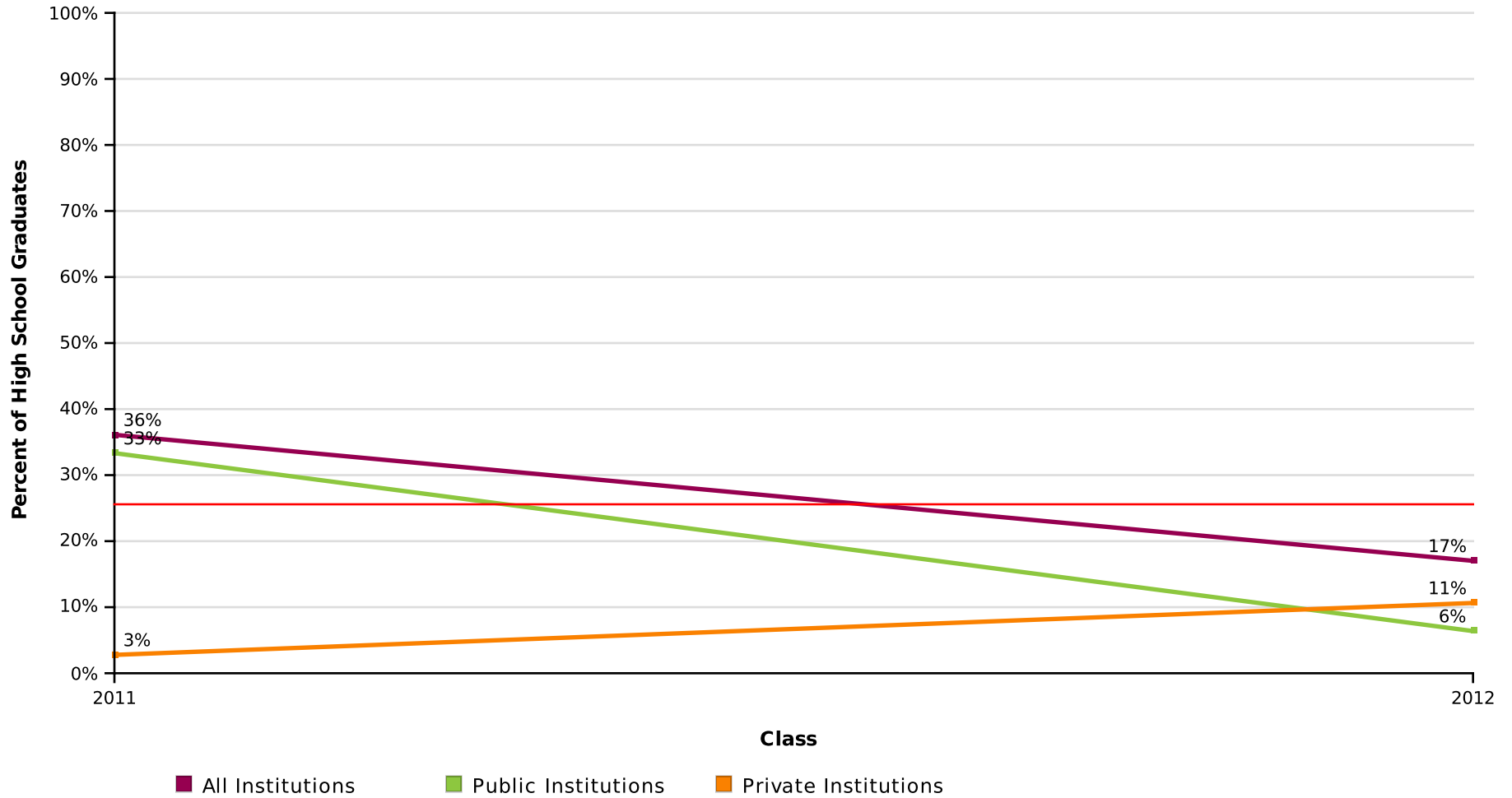
Effective Date = April 11, 2019



AVG = 25%

Percent of High School Class Who Completed a Degree Within Six Years by Institutional Type

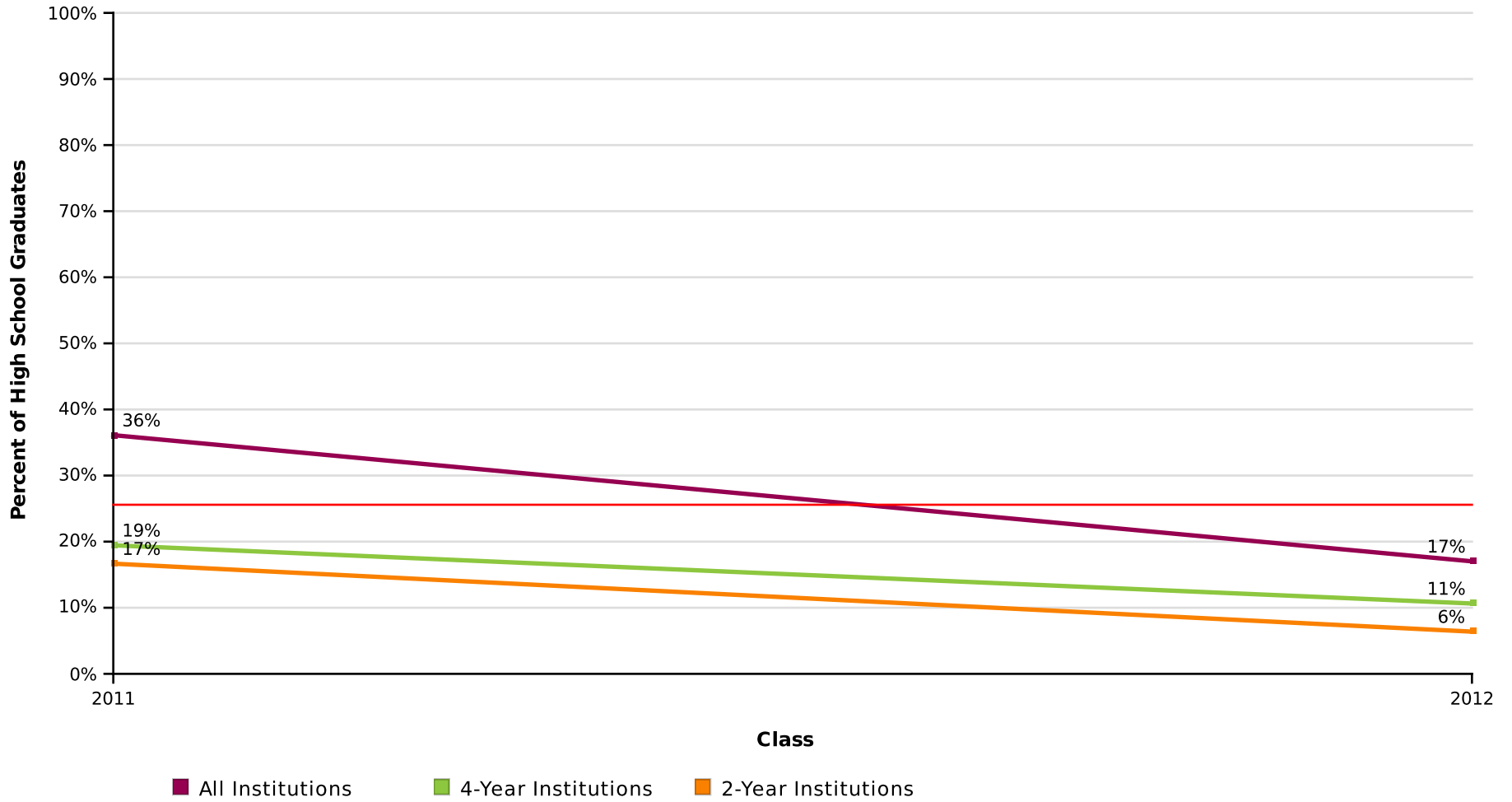
Effective Date = April 11, 2019



AVG = 25%

Percent of High School Class Who Completed a Degree Within Six Years by Institutional Level

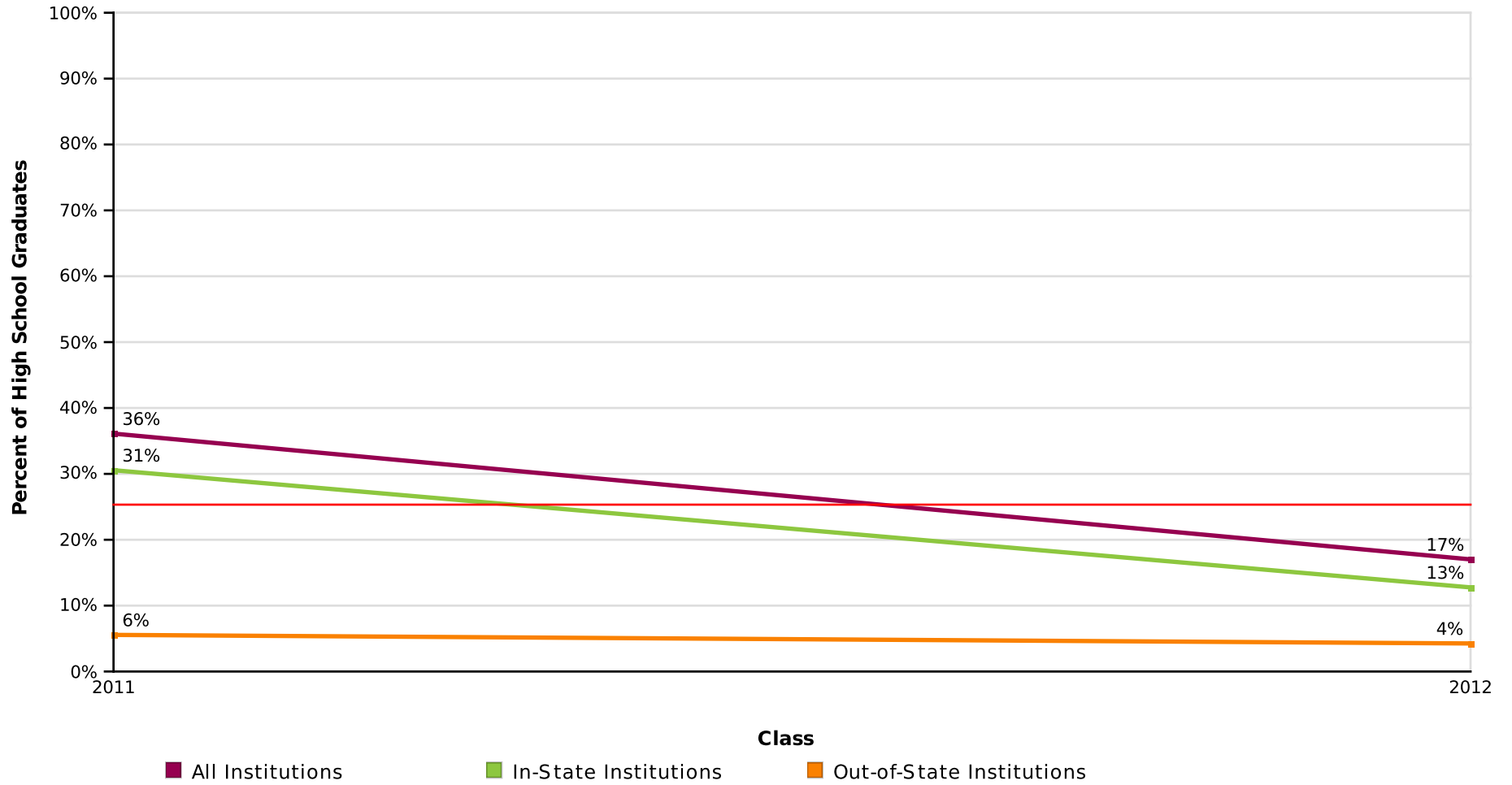
Effective Date = April 11, 2019



AVG = 25%

Percent of High School Class Who Completed a Degree Within Six Years by Institutional Location

Effective Date = April 11, 2019



AVG = 25%

LEE ACADEMY

Report Run Date: 05/28/2019 06:52 PM

Page 25 of 45

NATIONAL STUDENT
CLEARINGHOUSE

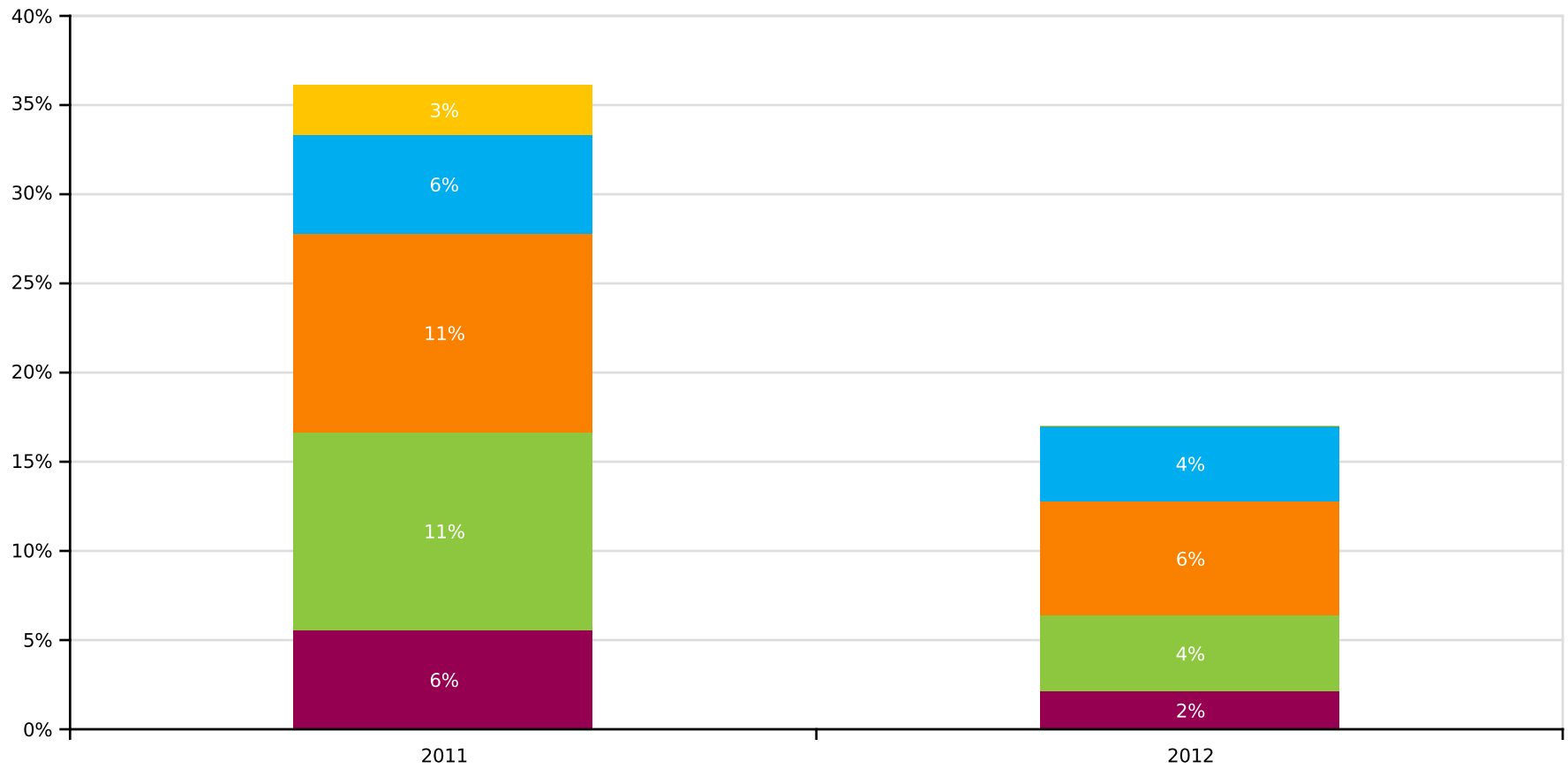
©2012 National Student Clearinghouse. All rights reserved.

Count of High School Graduates with a College Degree

Effective Date = April 11, 2019

Class of	2011	2012
Total in the Class	36	47
Total With a Degree	13	8
Total from Public	12	3
Total from Private	1	5
Total from 4-Year	7	5
Total from 2-Year	6	3
Total In-State	11	6
Total Out-Of-State	2	2

Time to College Graduation Within Six Years (Associate's, Bachelor's and Higher)

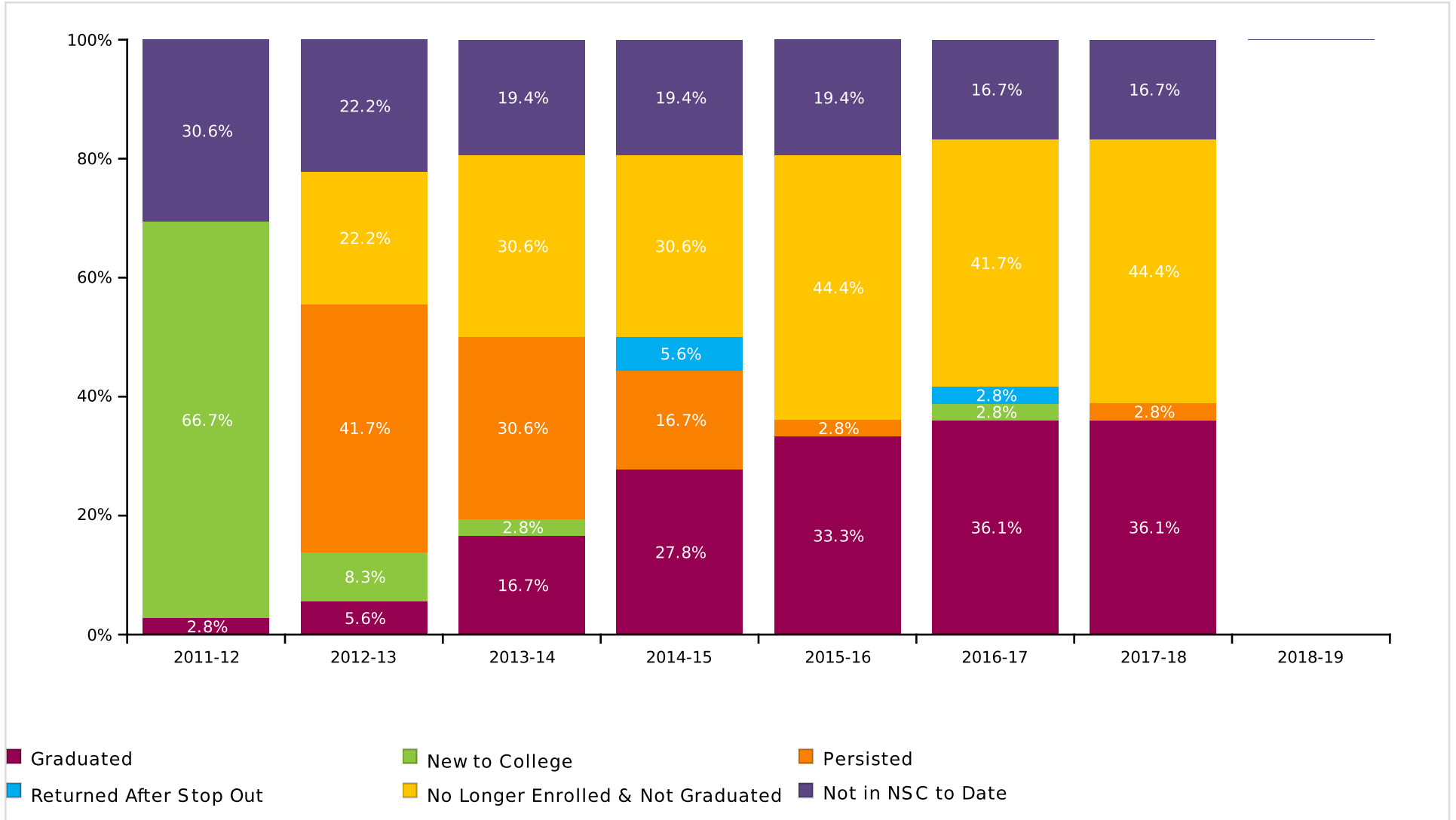


■ Graduated in 2 Years or Less
 ■ Graduated in 3 Years
 ■ Graduated in 4 Years
 ■ Graduated in 5 Years
■ Graduated in 6 Years

Count of Time to College Graduation within Six Years

Class of	2011	2012
Total In the Class	36	47
Graduated in 2 Years or Less	2	1
Graduated in 3 Years	4	2
Graduated in 4 Years	4	3
Graduated in 5 Years	2	2
Graduated in 6 Years	1	0

Class of 2011 Postsecondary Enrollment and Progress

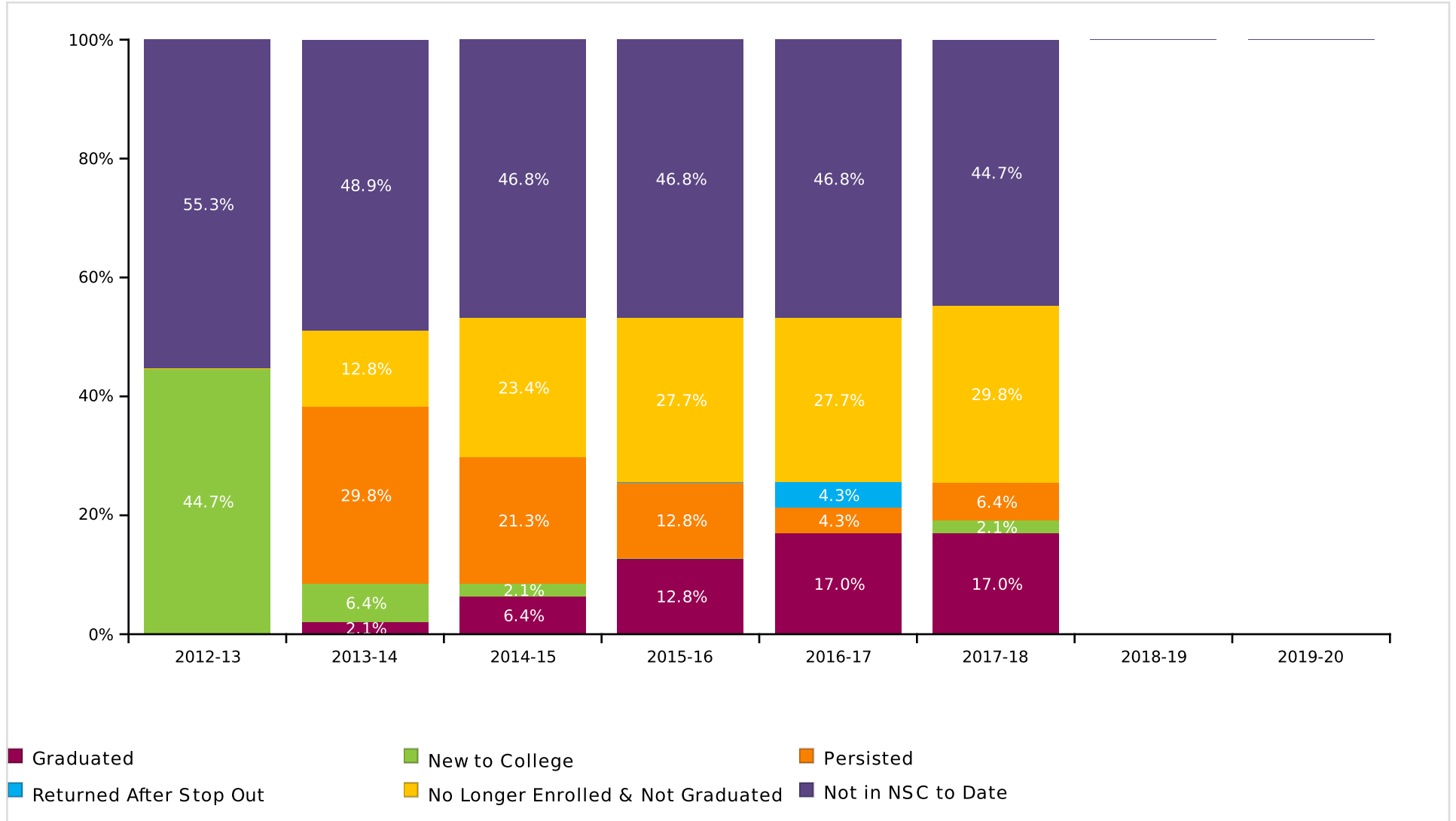


Count of Class 2011 Postsecondary Enrollment and Progress

Total in the Class: 36

Academic Years	2011-12	2012-13	2013-14	2014-15	2015-16	2016-17	2017-18	2018-19
New to College	24	3	1	0	0	1	0	0
Persisted	0	15	11	6	1	0	1	0
Returned After Stop Out	0	0	0	2	0	1	0	0
No Longer Enrolled & Not Graduated	0	8	11	11	16	15	16	0
Not in NSC to Date	11	8	7	7	7	6	6	0

Class of 2012 Postsecondary Enrollment and Progress

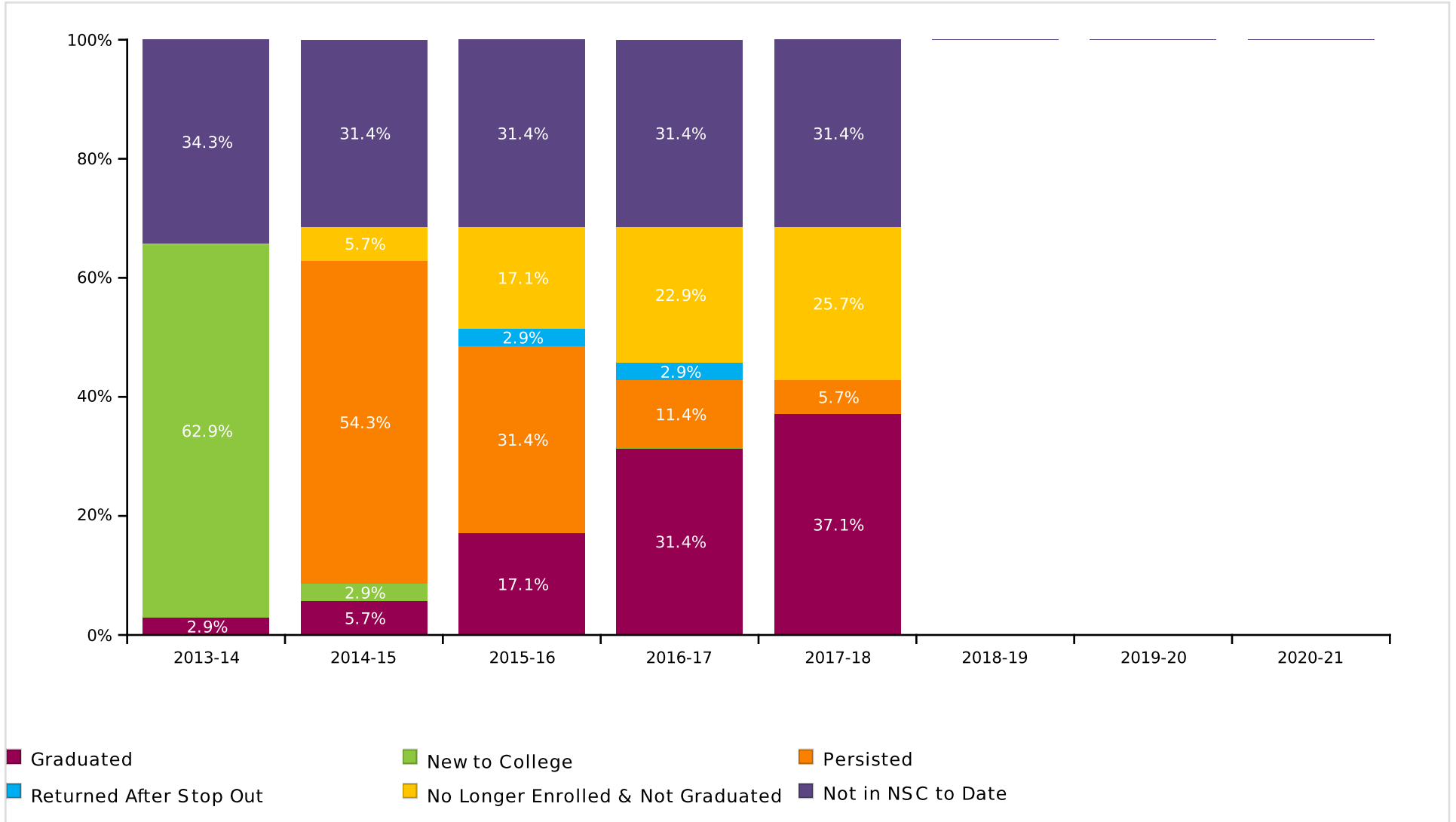


Count of Class 2012 Postsecondary Enrollment and Progress

Total in the Class: 47

Academic Years	2012-13	2013-14	2014-15	2015-16	2016-17	2017-18	2018-19	2019-20
New to College	21	3	1	0	0	1	0	0
Persisted	0	14	10	6	2	3	0	0
Returned After Stop Out	0	0	0	0	2	0	0	0
No Longer Enrolled & Not Graduated	0	6	11	13	13	14	0	0
Not in NSC to Date	26	23	22	22	22	21	0	0

Class of 2013 Postsecondary Enrollment and Progress

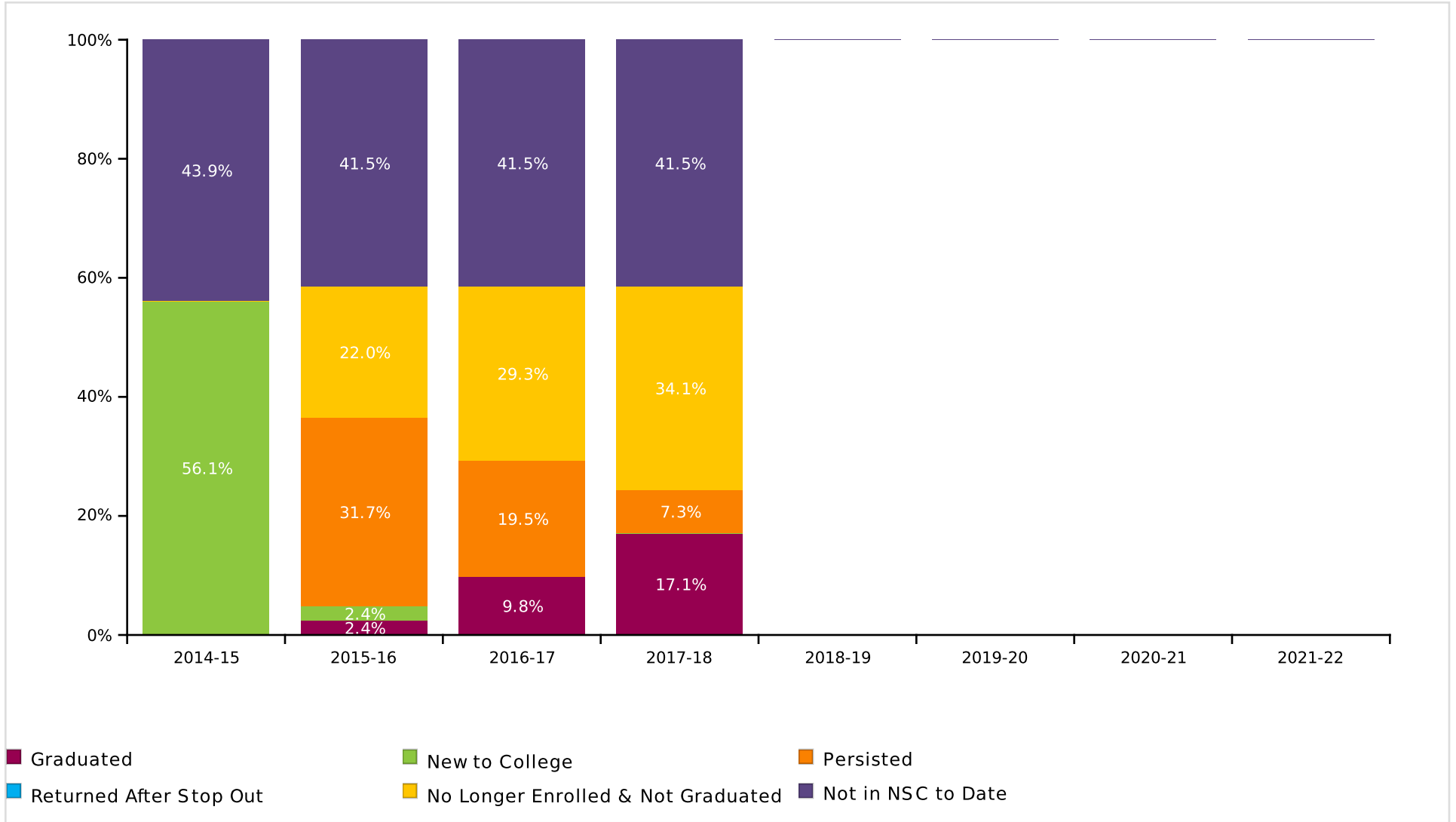


Count of Class 2013 Postsecondary Enrollment and Progress

Total in the Class: 35

Academic Years	2013-14	2014-15	2015-16	2016-17	2017-18	2018-19	2019-20	2020-21
New to College	22	1	0	0	0	0	0	0
Persisted	0	19	11	4	2	0	0	0
Returned After Stop Out	0	0	1	1	0	0	0	0
No Longer Enrolled & Not Graduated	0	2	6	8	9	0	0	0
Not in NSC to Date	12	11	11	11	11	0	0	0

Class of 2014 Postsecondary Enrollment and Progress

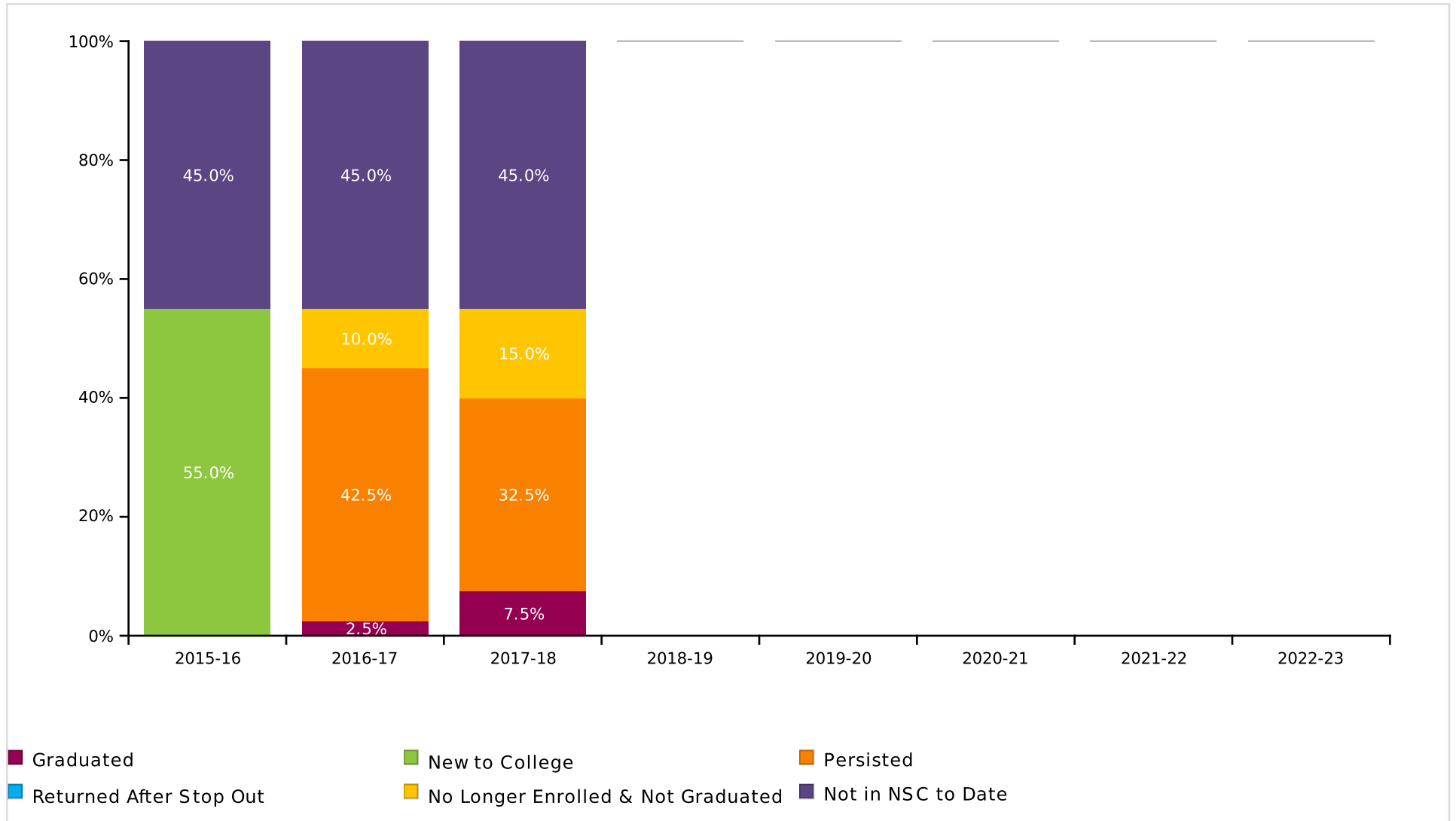


Count of Class 2014 Postsecondary Enrollment and Progress

Total in the Class: 41

Academic Years	2014-15	2015-16	2016-17	2017-18	2018-19	2019-20	2020-21	2021-22
New to College	23	1	0	0	0	0	0	0
Persisted	0	13	8	3	0	0	0	0
Returned After Stop Out	0	0	0	0	0	0	0	0
No Longer Enrolled & Not Graduated	0	9	12	14	0	0	0	0
Not in NSC to Date	18	17	17	17	0	0	0	0

Class of 2015 Postsecondary Enrollment and Progress

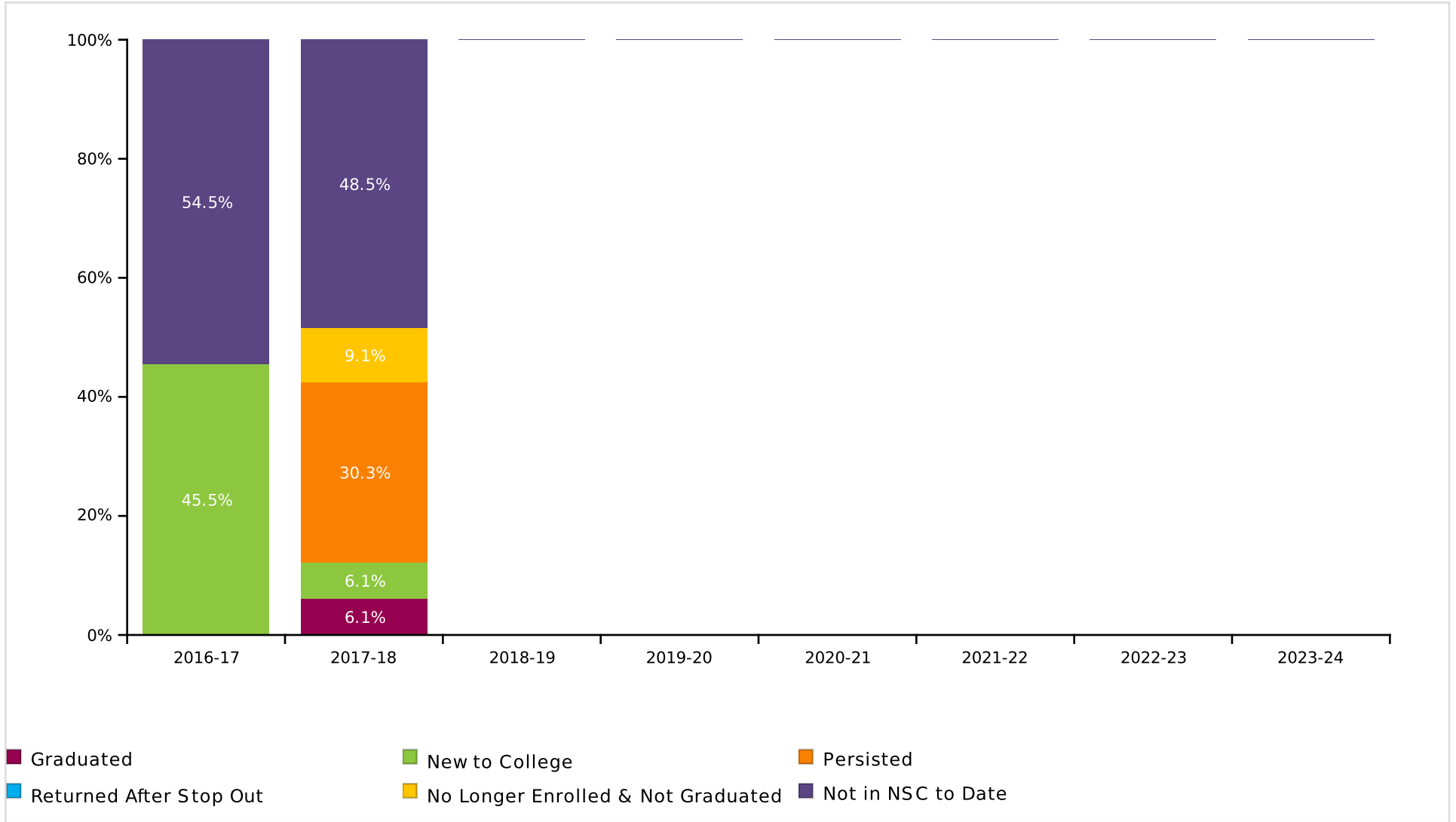


Count of Class 2015 Postsecondary Enrollment and Progress

Total in the Class: 40

Academic Years	2015-16	2016-17	2017-18	2018-19	2019-20	2020-21	2021-22	2022-23
New to College	22	0	0	0	0	0	0	0
Persisted	0	17	13	0	0	0	0	0
Returned After Stop Out	0	0	0	0	0	0	0	0
No Longer Enrolled & Not Graduated	0	4	6	0	0	0	0	0
Not in NSC to Date	18	18	18	0	0	0	0	0

Class of 2016 Postsecondary Enrollment and Progress



Count of Class 2016 Postsecondary Enrollment and Progress

Total in the Class: 33

Academic Years	2016-17	2017-18	2018-19	2019-20	2020-21	2021-22	2022-23	2023-24
New to College	15	2	0	0	0	0	0	0
Persisted	0	10	0	0	0	0	0	0
Returned After Stop Out	0	0	0	0	0	0	0	0
No Longer Enrolled & Not Graduated	0	3	0	0	0	0	0	0
Not in NSC to Date	18	16	0	0	0	0	0	0

Class of 2017 Postsecondary Enrollment and Progress



Count of Class 2017 Postsecondary Enrollment and Progress

Total in the Class: 27

Academic Years	2017-18	2018-19	2019-20	2020-21	2021-22	2022-23	2023-24	2024-25
New to College	21	0	0	0	0	0	0	0
Persisted	0	0	0	0	0	0	0	0
Returned After Stop Out	0	0	0	0	0	0	0	0
No Longer Enrolled & Not Graduated	0	0	0	0	0	0	0	0
Not in NSC to Date	6	0	0	0	0	0	0	0

**Most Common Institutions of Enrollment in the Fall Immediately following High School Graduation
for All Classes by Number of Students**

Name	Rank	State	Level	Type	Total
EASTERN MAINE COMMUNITY COLLEGE	1	ME	2-year	Public	36
UNIVERSITY OF MAINE, ORONO	2	ME	4-year	Public	32
THOMAS COLLEGE	3	ME	4-year	Private	9
WASHINGTON COUNTY COMMUNITY COLLEGE	4	ME	2-year	Public	9
UNIVERSITY OF MAINE, PRESQUE ISLE	5	ME	4-year	Public	8
UNIVERSITY OF MAINE, FARMINGTON	6	ME	4-year	Public	7
UNIVERSITY OF MAINE, AUGUSTA	7	ME	4-year	Public	6
UNIVERSITY OF SOUTHERN MAINE	8	ME	4-year	Public	6
UNIVERSITY OF MAINE, FT KENT	9	ME	4-year	Public	5
HUSSON UNIVERSITY	10	ME	4-year	Private	4
NORTHERN MAINE COMMUNITY COLLEGE	11	ME	2-year	Public	4
CENTRAL MAINE COMMUNITY COLLEGE	12	ME	2-year	Public	2
CULINARY INSTITUTE OF AMERICA	13	NY	4-year	Private	2
KENNEBEC VALLEY COMMUNITY COLLEGE	14	ME	2-year	Public	2
MAINE MARITIME ACADEMY	15	ME	4-year	Public	2
NEW ENGLAND SCHOOL OF COMMUNICATIONS	16	ME	4-year	Private	2
SAINT JOSEPH'S COLLEGE OF MAINE	17	ME	4-year	Private	2
BOSTON UNIVERSITY	18	MA	4-year	Private	1
CLARK UNIVERSITY	19	MA	4-year	Private	1
COFFEYVILLE COMMUNITY COLLEGE	20	KS	2-year	Public	1
COLBY COLLEGE	21	ME	4-year	Private	1
COLUMBUS COLLEGE OF ART & DESIGN	22	OH	4-year	Private	1
COLUMBUS STATE COMMUNITY COLLEGE	23	OH	2-year	Public	1
FAIRFIELD UNIVERSITY	24	CT	4-year	Private	1
FISHER COLLEGE-TRADITIONAL	25	MA	4-year	Private	1

LEE ACADEMY

Report Run Date: 05/28/2019 06:52 PM

Page 43 of 45

**NATIONAL STUDENT
CLEARINGHOUSE**

©2012 National Student Clearinghouse. All rights reserved.

Appendix

Graphs (in order of appearance)	Description
Percent of Students Enrolled in College the Fall Immediately Following Graduation From High School (pp. 2-5)	Percentage of high school students who enrolled in a two- or four- year postsecondary institution in the fall semester immediately following graduation. The fall semester immediately following graduation is defined as any college enrollment between August 15 and October 31. The student must have an active enrollment between these dates. Shown only for classes which have completed a fall semester.
Percent of Students Enrolled in College at Any Time During the First Year After High School (pp. 7-10)	Percentage of high school students who enrolled in a two- or four-year postsecondary institution in the academic year immediately following graduation. The first year after high school includes any college enrollment where a student had active enrollment between August 15 of the graduation calendar year and August 14 of the following calendar year.*
Percent of Students Enrolled in College at Any Time During the First Two Years After High School (pp. 12-15)	Percentage of high school students who enrolled in a two- or four-year postsecondary institution in the academic year immediately following graduation. The two years after high school includes any college where the student had active enrollment between August 15 of the graduation calendar year and August 14 of the following two calendar years.*
Percent of Students Enrolled in College the First year After High School Who Returned for a Second Year (pp. 17-20)	Percentage of students who remained enrolled (persisted) in postsecondary education from the first year to the second year. Note: The graphs show the percentage of students who remained enrolled at any postsecondary institution, not retention at the same institution. Shown only for classes which have completed the first two years after high school.
Percent of High School Class with a College Degree Within Six Years (pp. 22-25)	The six-year degree completion rate at two- and four- year institutions. Shown only for classes where six academic years have passed since high school graduation. When a student has a degree with an award date that is more than 6 years after high school year, it will not be counted in this report; it will be reported in the student-level Detail Report. Only associate's, bachelor's, and advanced degrees are counted in these rates. Certificates are not included in these counts but will be included in the student-level Detail Report.
Time to College Graduation Within Six Years (p. 27)	This graph shows the time to first degree broken down by the number of academic years since the students graduated from high school.
Class of XXXX Postsecondary Enrollment and Progress (each class year is on its own page)	<p>Progress of a single class of students (cohort) through postsecondary education up to eight years after high school graduation. Each segment of the bar chart corresponds to one of the following definitions:</p> <p>GRADUATED: Student has completed an associate's, bachelor's or higher degree (certificates are not included). Once a student is counted as a graduate, s/he is not counted again elsewhere in the report. A Graduated Record is reported before all other possible categories (e.g. New to College, Persisted, etc.)</p> <p>NEW TO COLLEGE: First year that the student was found in the Clearinghouse database.</p> <p>PERSISTED: Student was enrolled during the previous year and continues to be enrolled in the current year. The graphs show the student's continued enrollment at any postsecondary institution, not retention at the same institution.</p> <p>RETURNED AFTER STOP OUT: Student was enrolled, did not appear in postsecondary education the following year, and reappeared in a year thereafter.</p> <p>NO LONGER ENROLLED & NOT GRADUATED: Student was enrolled in postsecondary education, is not currently enrolled and there is no record of completion.</p> <p>NOT IN NSC TO DATE: Student was not found in the Clearinghouse database.**</p>
Most Common Institutions of Enrollment in the Fall Immediately Following Graduation from High School for All Classes - by Number of Students	A comprehensive list of the top 25 most frequently attended postsecondary institutions your students attended in the first fall following high school graduation.

Term	Definition
Effective Date	Set by Clearinghouse's Research Center three times per year- Fall, Spring and Summer. The date will be noted in the Report File Name and within the StudentTracker application. The date is established to ensure that your StudentTracker reports provide the most comprehensive enrollment and degree data provided by the colleges and universities for a given period, and that all secondary education institutions are matched against the same set of post-secondary data. Reports generated in between effective dates will be processed against the most recent effective date; no new data will be reported.
High School Class (labeled by graduation year)	Includes all students who graduated high school between September 1 of the previous year and August 31 of the graduation year. Also referred to as a cohort.
Academic Year	Defined as any collegiate enrollment that occurs between August 15 of one year and August 14 of the following year.
Institutional Level	Indicates the level of degree predominantly offered by the institution (i.e. two-year or four-year).
Institutional Type	Indicates whether the institution is controlled publically or by a private entity.
Institutional Location	Indicates if an institution is in-state or out-of-state based on the comparison between the states where the institution and the high school are located.
Demographic Packet	A packet of reports for many of the same outcomes described above but stratified by the Demographic data elements you provided in your Diploma or Request file, if any. The Demographic data elements are: Gender, Ethnicity, Economic Disadvantage indicator, Disability indicator, English Language Learner.
Academic Packet	A packet of reports for many of the same outcomes described above but stratified by the Academic data elements you provided in your Diploma or Request file, if any. The Academic data elements are: Math Assessment 8th grade and high school, English Assessment 8th grade and high school, Dual Enrollment indicator and Number of Semesters of Math completed.

*Revised in Spring 2016 to display the recent high school class even though the full time period has not elapsed

**Institutions that participate in the Clearinghouse represent more than 98% of the nation's two- and four- year postsecondary enrollment. Students who are enrolled in postsecondary institutions that do not participate in the Clearinghouse are not in the Clearinghouse database.