

Maine Coastal Eelgrass Distribution

Eelgrass (*Zostera marina*) is a flowering plant that occurs worldwide and along the east coast of North America from North Carolina to Labrador. Along the Maine coast it is found in shallow, protected intertidal and subtidal locations.

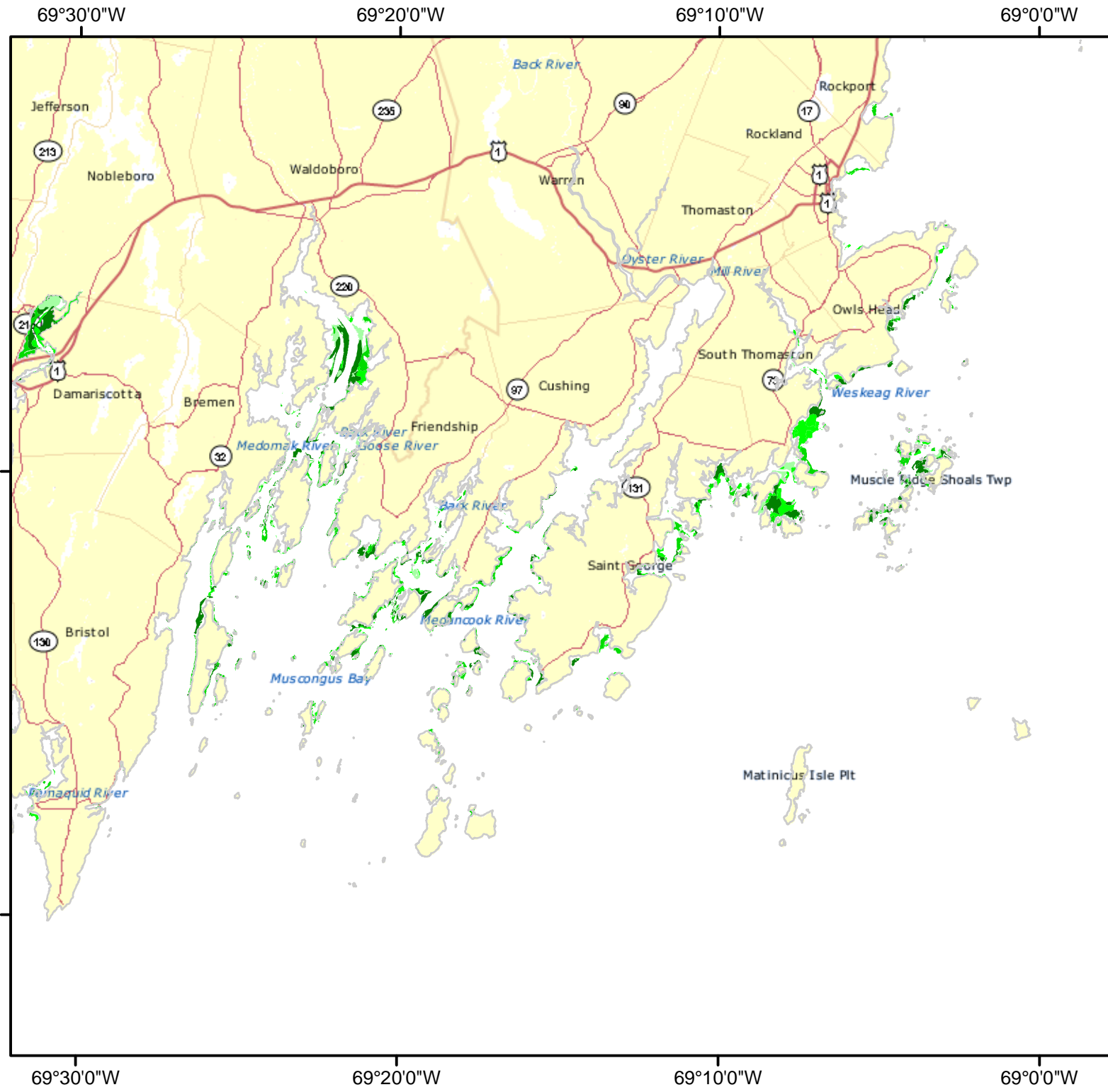
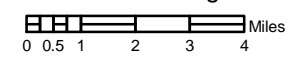
Zostera beds form an important habitat for shellfish, wildlife and other vertebrate and invertebrate species. The distribution in Maine has been mapped since 1992.

These maps are provided as an overview of known locations of eelgrass beds. The original data was developed for use at 1:24000 scale. This information is not intended as site specific information as is often needed for permit review or detailed scientific studies. The present distribution of eelgrass may differ from mapped distribution as photo-aquisition dates range from 1992 to 2005.

Original funding for mapping of the perimeter of Penobscot Bay was provided to Fred Short of Salmon Falls Consulting and UNH by MeDOT. Since that time funding has been provided to Maine Dept. of Marine Resources (MeDMR) by the NOAA Coastal Services Center, MeDEP, MeSPO, and the Maine Submerged Lands Program.

Eelgrass Per Cent Cover

- GT 0 to 10 %
- GT 10 to 40 %
- GT 40 to 70 %
- GT 70 to 100%
- Present but not categorized



69°30'0"W 69°20'0"W 69°10'0"W 69°0'0"W

44°0'0"N

43°50'0"N

69°30'0"W 69°20'0"W 69°10'0"W 69°0'0"W

Current GIS data can be obtained from the Maine Office of GIS (MeGIS). Basemap developed by Northern Geomatics and provided as a map service by MeGIS. For information on maps produced for this project please contact Seth.Barker@maine.gov.