



MaineCare Services

*An Office of the
Department of Health and Human Services*

Paul R. LePage, Governor

Mary C. Mayhew, Commissioner

n

SIM Steering Committee Meeting

July 10, 2013



SIM will not be successful without collaboration among all stakeholders

“If you bring the appropriate people together in constructive ways with good information, they will create authentic visions and sustainable responses to issues and opportunities within their communities and organizations.”

- David Chrislip, Collaborative Leadership Strategist



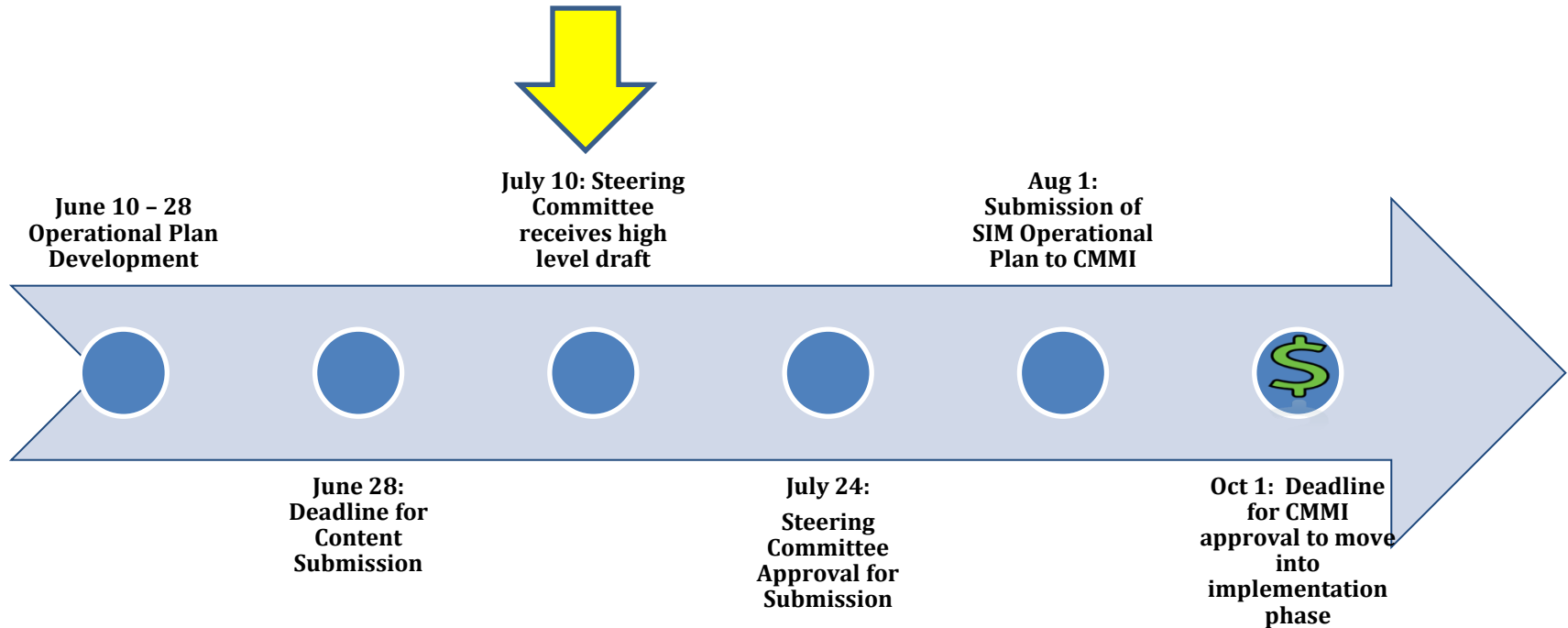
SIM Steering Committee Agenda

Agenda Topic	Lead	Time Allocated
Live Microphone Introduction	Dr. Flanigan	5
By-Law Adoption	Dr. Flanigan	10
Introductions of New Members	Dr. Flanigan	5
Early Operational Plan – Status and Overview	Randy Chenard	20
Review of Executive Summary	Jim Leonard	30
Work Group Overviews	Dr. Flanigan/Randy Chenard	10
Public Comment		



Operational Plan Development and Review:

Timeline and Process





SIM Final Operational Plan Components : July 24

High Level Overview Information

- Executive Summary
- SIM Logic Models and Driver Diagrams

SIM Project Plan

- List of Deliverables
- Gantt Chart

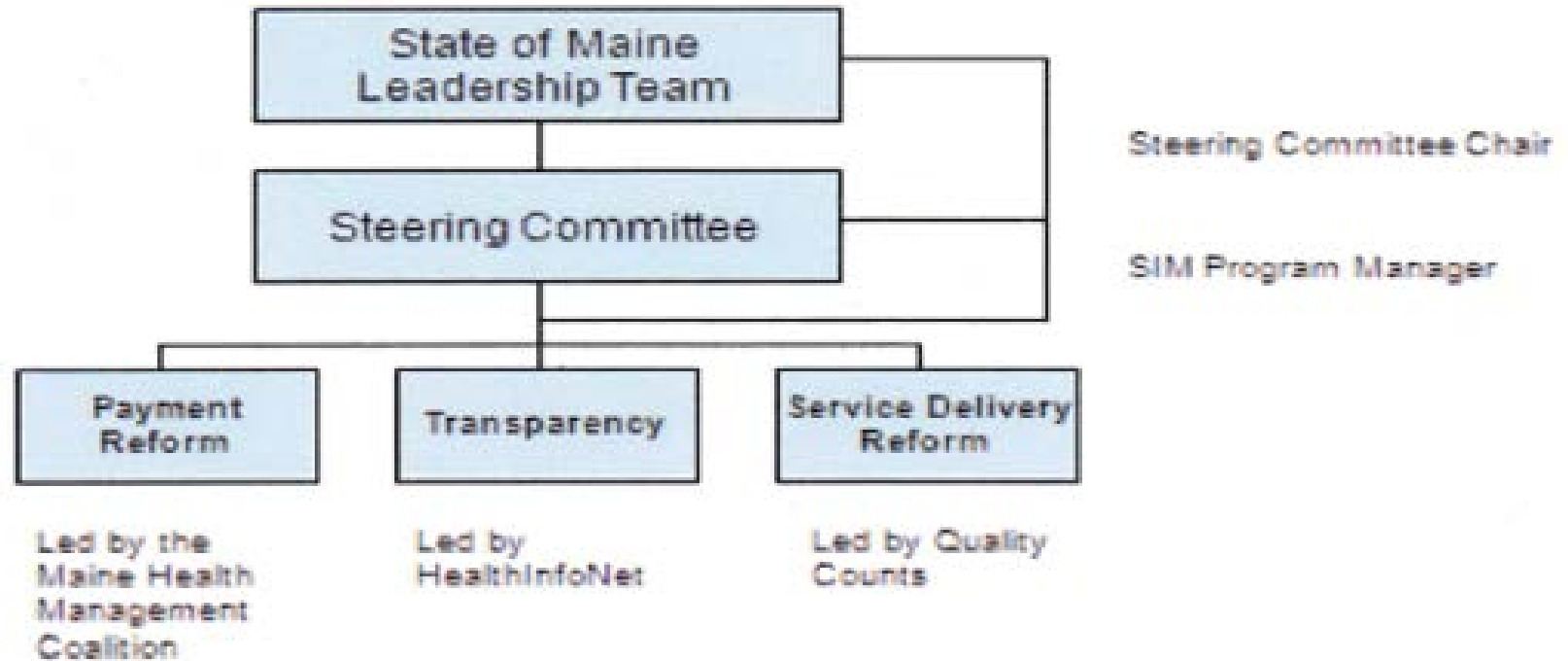
CMMI Demonstration Readiness Review (DRR) Content

- Main content detail
- Multiple Contributors



Work Group High Level Overview

Maine's SIM Governance Structure





MaineCare Services
An Office of the
Department of Health and Human Services

Paul R. LePage, Governor

Mary C. Mayhew, Commissioner

n

Steering Committee Member Expectations

- Expertise and Knowledge
 - What is achievable
 - What is not achievable
- Communicate back to communities and engage communities in SIM discussion



MaineCare Services

An Office of the
Department of Health and Human Services

Paul R. LePage, Governor

Mary C. Mayhew, Commissioner

n

SIM Steering Committee

- Fundamental Accountability/Role: Cross-Stakeholder/Partner leadership group responsible for Grant execution oversight and alignment of effort toward grant objectives
- Expectations of the Steering Committee:
 - Consistent understanding of status against plan overall and responsible for removing barriers and providing course correction when needed
 - Ensure working groups focus/efforts maintain alignment with overall SIM Grant objectives
 - Approval of delivery, approaches, recommendations from working groups.
 - Operate with the mindset of overall success in reform/innovation against the SIM Grant objectives versus stakeholder-specific interest
 - Make best decisions on the right approach versus requiring perfect solutions; innovation/reform requires bold action with an understanding that adjustments will be made based on learning
 - Reach consensus on a high percentage of issues escalated from workgroups. A small % of issues should require escalation to Maine State Leadership Team



The 'Maine' SIM

Theme: Collaboration

“If you bring the appropriate people together in constructive ways with good information, they will create authentic visions and sustainable responses to issues and opportunities within their communities and organizations.”

- David Chrislip, Collaborative Leadership Strategist