

Maine Influenza Surveillance Summary: Summer 2008

October 20, 2008

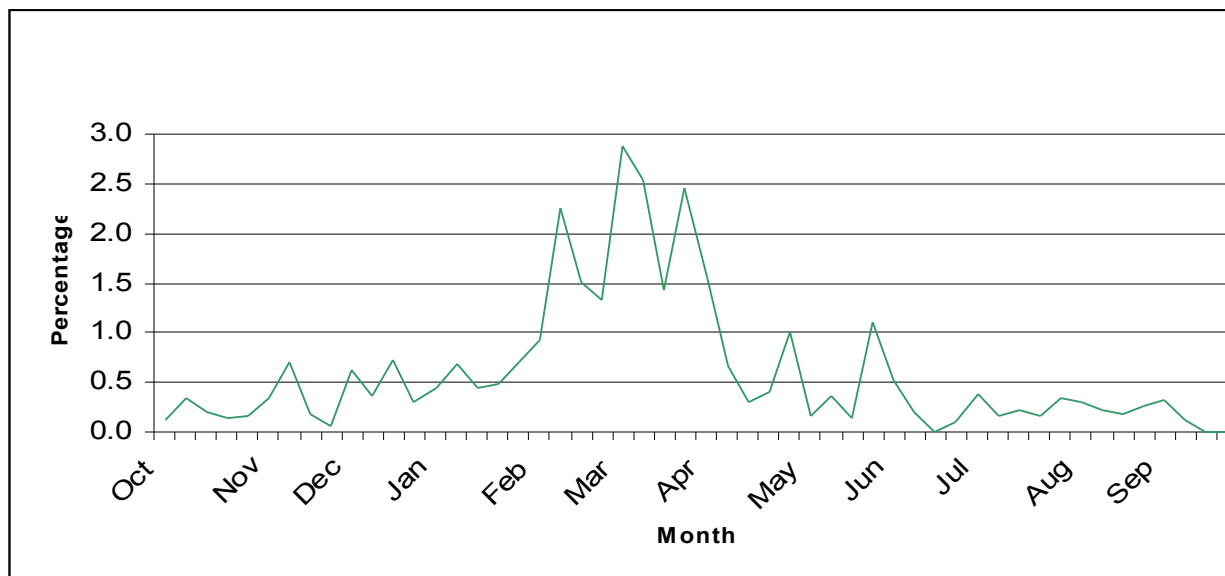
Synopsis

During the summer of 2008, relatively little activity was observed in outpatients and hospital inpatients. Respiratory specimens submitted for influenza testing at the Maine Health and Environmental Testing Laboratory were all negative. No outbreaks of influenza or influenza-associated pediatric deaths were reported during the summer of 2008.

Outpatient influenza-like illness

Seven health care providers reported weekly this summer the number of patients seen in their practices and the number of those patients seen for ILI, defined as fever (greater than or equal to 100°F/37.8°C, oral or equivalent) AND cough and/or sore throat in the absence of a known cause other than influenza, by age group. Influenza-like illness was uncommon among outpatients during the summer of 2008.

Outpatient Visits for Influenza-like Illness -- Maine, 2007-08

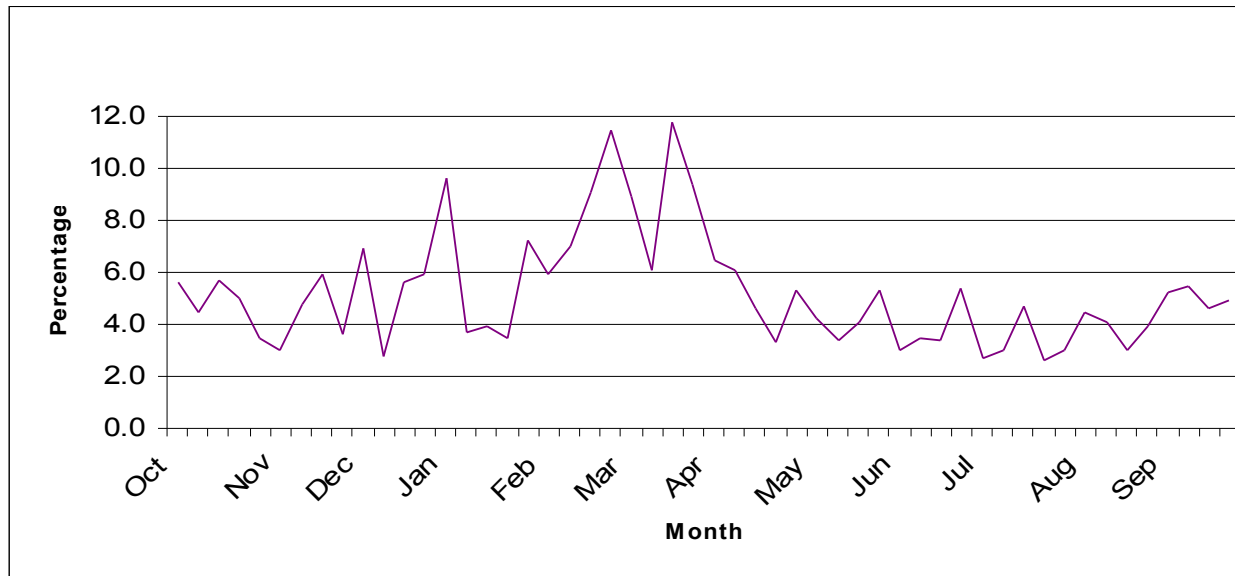


Hospital inpatients

During the summer of 2008, four hospitals participated in hospital-based surveillance, and reported the number of patients admitted to the hospital (three hospitals reported all admissions, one hospital reported emergency department admissions only) and the total number of those

patients admitted for respiratory illness. There was no significant increase in admissions, and the rate of admission for respiratory illness was relatively low for the summer of 2008.

Hospital Admissions due to Respiratory Illness -- Maine, 2007-08



Laboratory Reporting

During the summer of 2008, the Maine Health and Environmental Testing Laboratory performed 39 tests, including culture and PCR on respiratory specimens for influenza and other respiratory illnesses. All tests were negative for influenza.

Outbreaks

During the summer of 2008, there were no reported outbreaks of influenza.

Pediatric Fatalities

There were no influenza associated pediatric fatalities reported during the summer of 2008.

Death Certificates

The vital records offices of Bangor, Lewiston and Portland reported this summer the total number of deaths that occurred in their reporting area and the number of deaths for which pneumonia and influenza were noted on the death certificate as the primary or secondary cause of death. Pneumonia and influenza-associated deaths occur year-round in Maine; and the rate remained relatively stable throughout the summer. The sharp decrease seen in July is due to lack of reporting, not to any significant decrease in pneumonia and influenza related fatalities.

Percentage of Deaths Attributable to Pneumonia and Influenza – Maine, 2007-08

