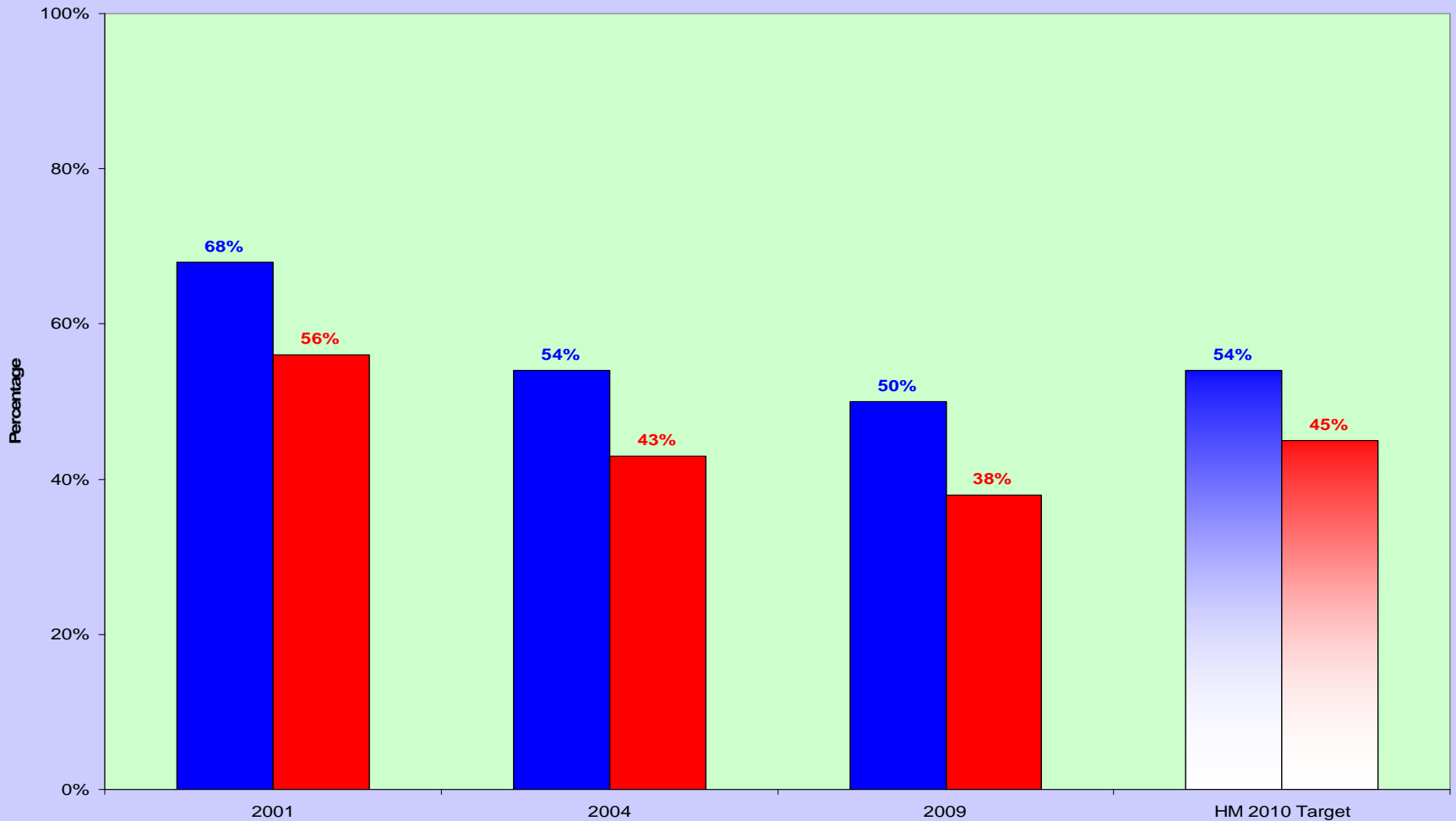


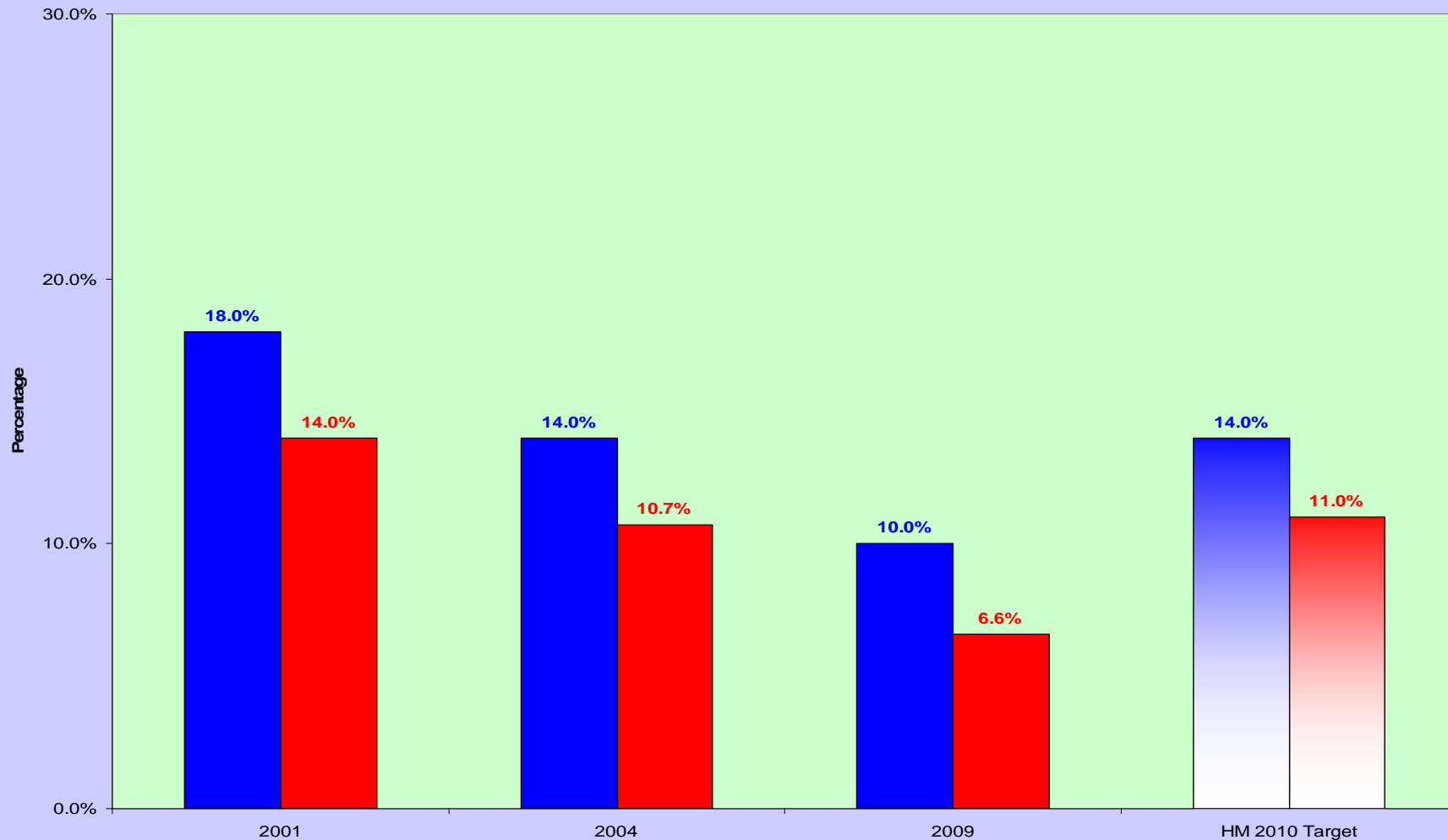
Proportion Of Adolescents In The Last Week Who Were In The Same Room With Someone Who Was Smoking Maine Select Years 2001-2009

■ Maine High School Students
■ Maine Middle School Students



Proportion Of Adolescents Exposed To Smoke In A Car 7 Days A Week Maine Select Years 2001-2009

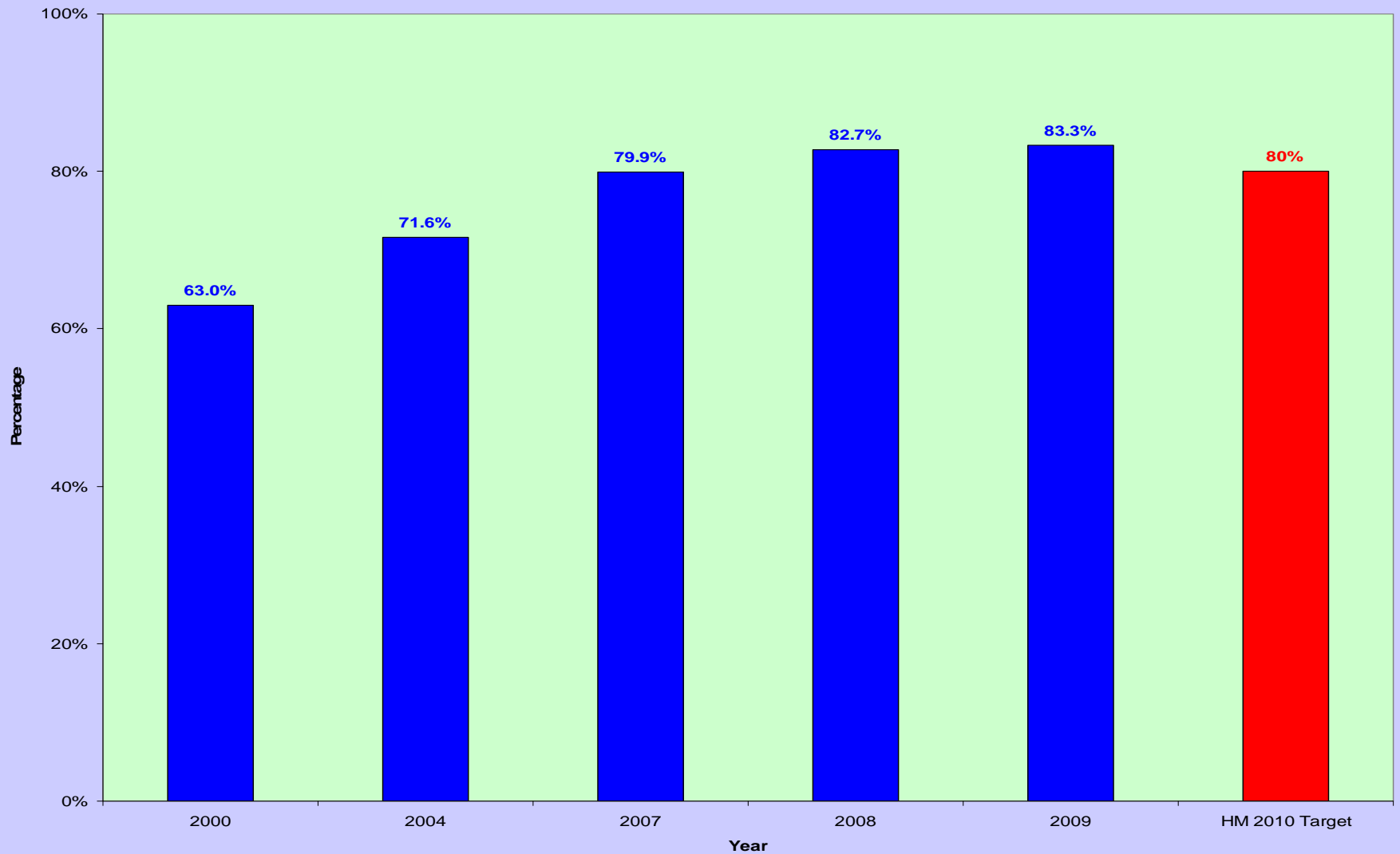
■ Maine High School Students
■ Maine Middle School Students



Objective # 27-10d
Average Hours Workers Are Exposed To
Secondhand Smoke At Work Per Week

No new data available

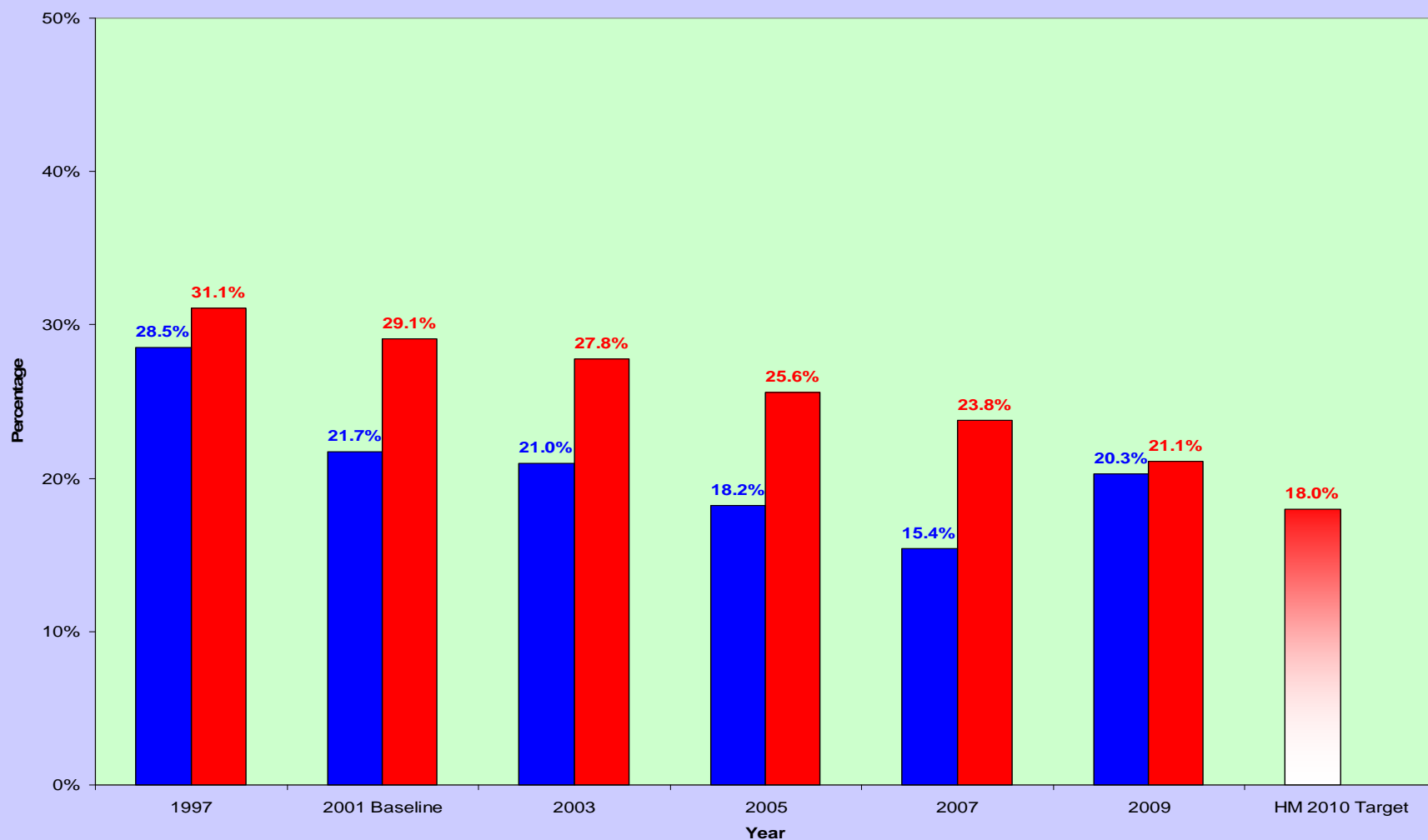
Proportion Of Adults Who Do Not Allow Smoking In Their Home Select Years, Maine 2000-2009



Proportion Of Adolescents (Grades 9-12) Who First Used Alcohol Before Age 13 Select Years, Maine And US 1997- 2009

■ Maine Adolescents (Grades 9-12)

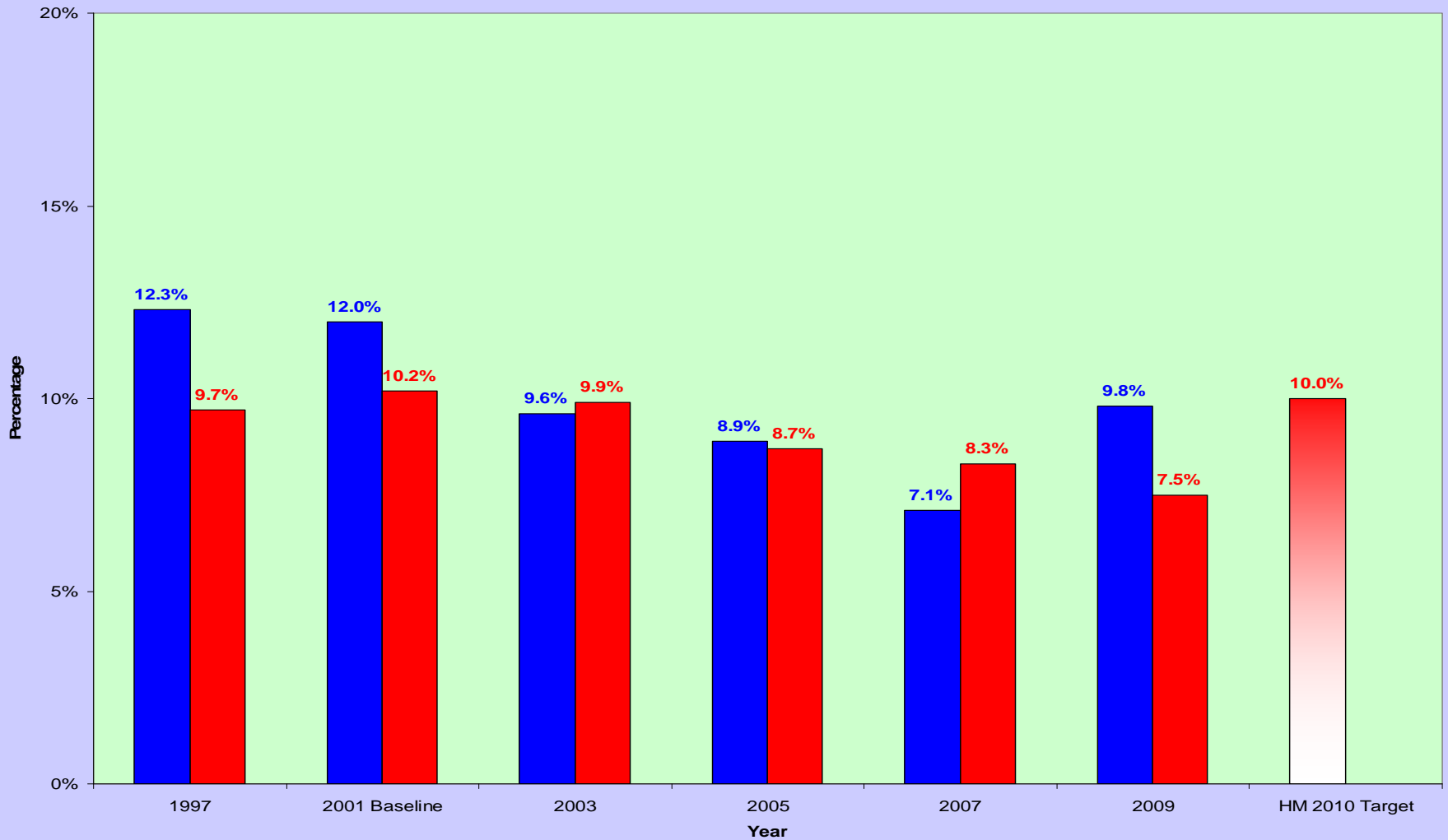
■ US Adolescents (Grades 9-12)



Proportion Of Adolescents (Grades 9-12) Who First Used Marijuana Before Age 13 Maine And US Select Years 1997-2009

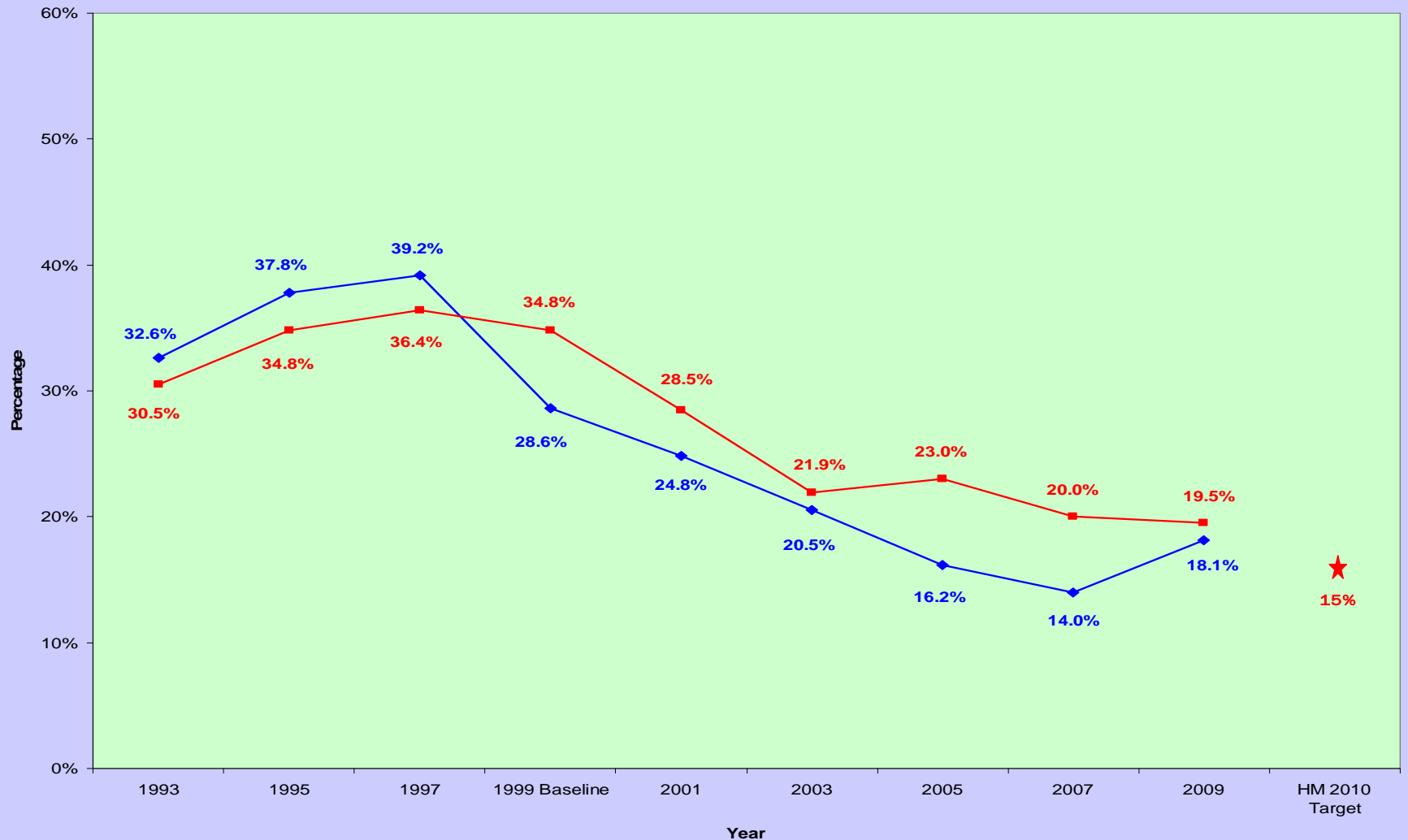
■ Maine Adolescents (Grades 9-12)

■ US Adolescents (Grades 9-12)



Cigarette Smoking Among Adolescents (Grades 9-12) Maine And US Select Years 1993-2009

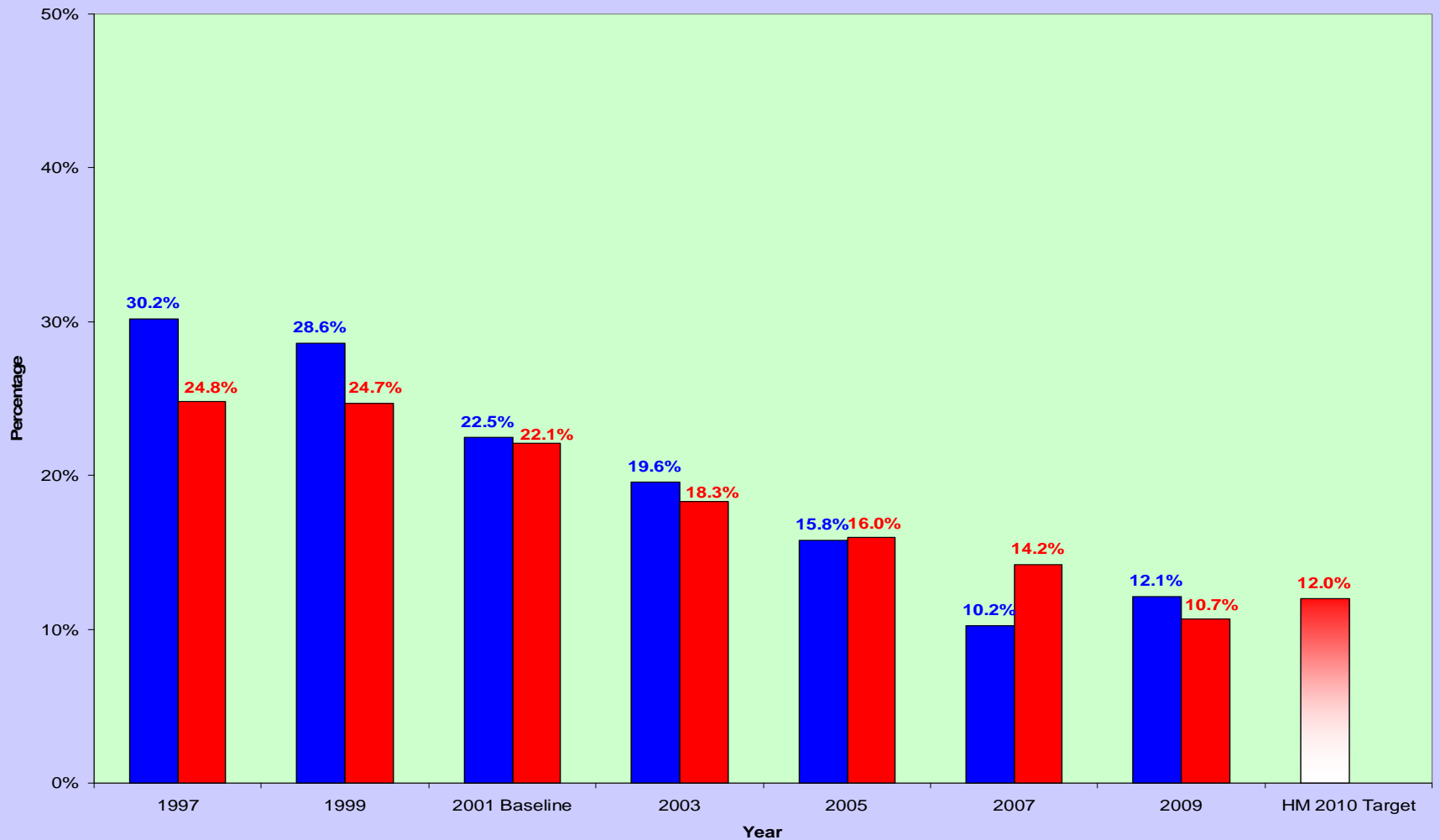
◆ Maine Adolescents (Grades 9-12) ■ US Adolescents (Grades 9-12)



Proportion Of Adolescents (Grades 9-12) Who Smoked A Whole Cigarette For The First Time Before Age 13 Maine And US Select Years 1997-2009

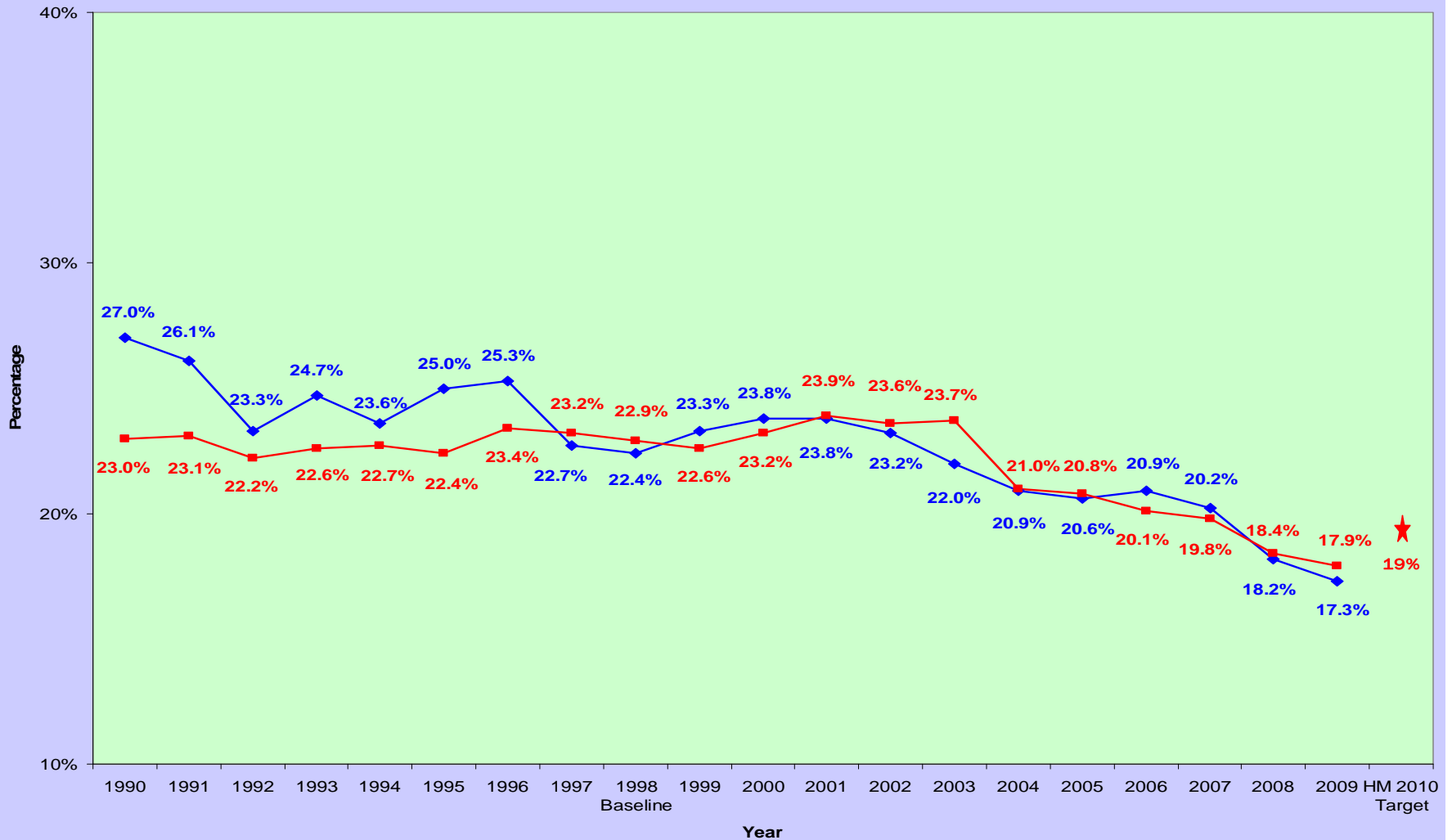
■ Maine Adolescents (Grades 9-12)

■ US Adolescents (Grades 9-12)



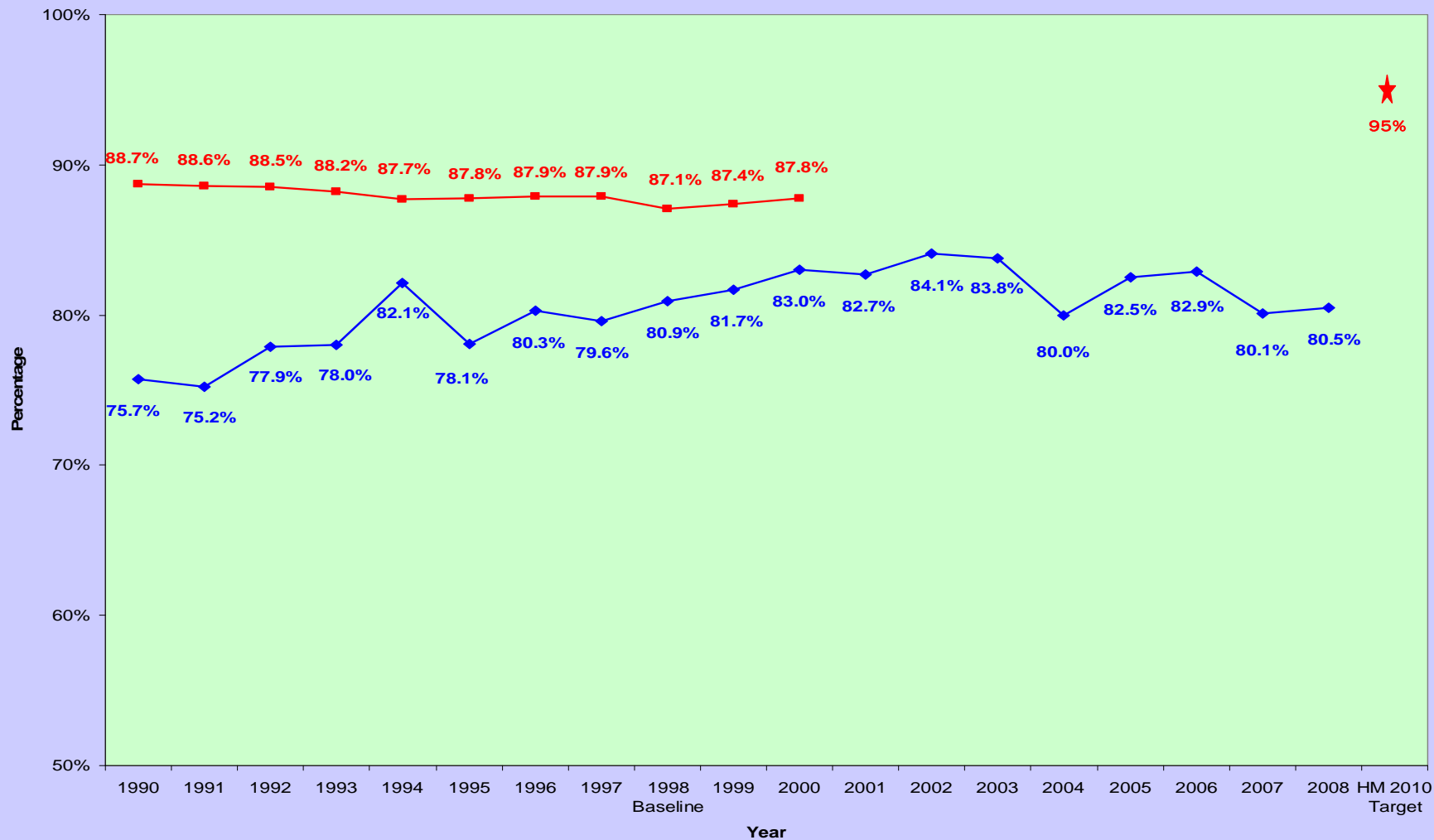
Cigarette Smoking Adults Maine And US 1990-2009

◆ Maine Adults ■ US Adults



Prenatal Smoking - Proportion Of Pregnant Women Who Did NOT Smoke During The Last Three Months Of Pregnancy Maine And US Select Years 1990-2008

◆ Maine ■ US



Proportion Of Pregnant Women Smoking During The Last 3 Months Of Pregnancy Medicaid And Non-Medicaid Insured Maine 1990-2008

