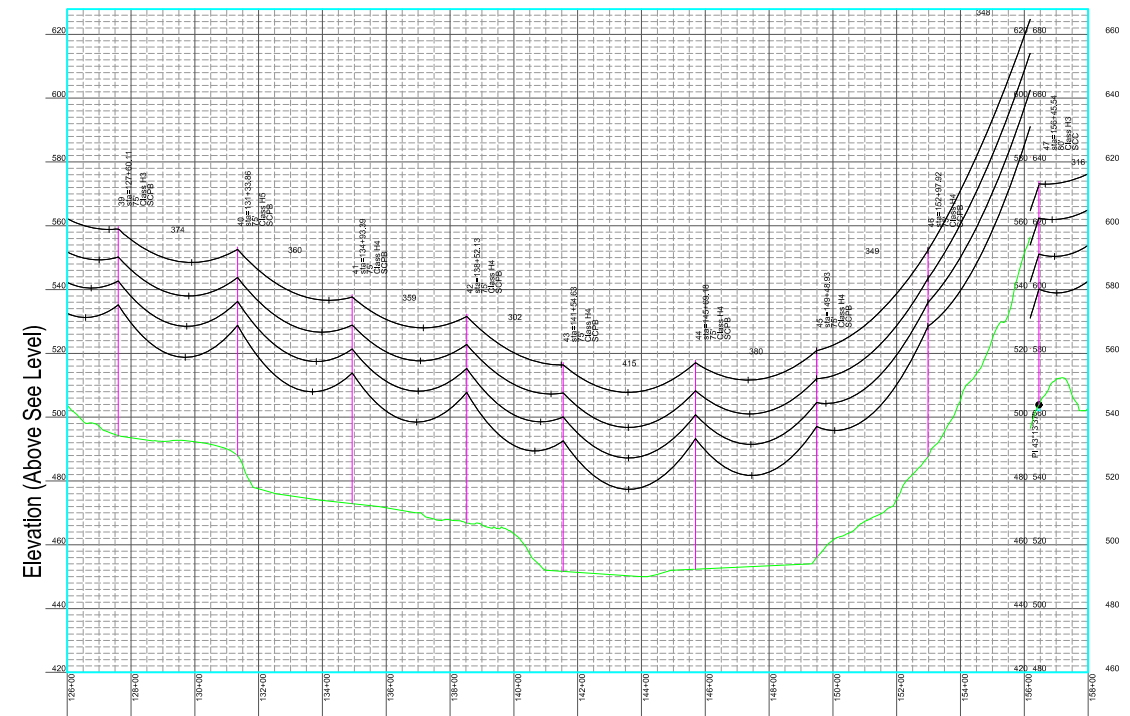
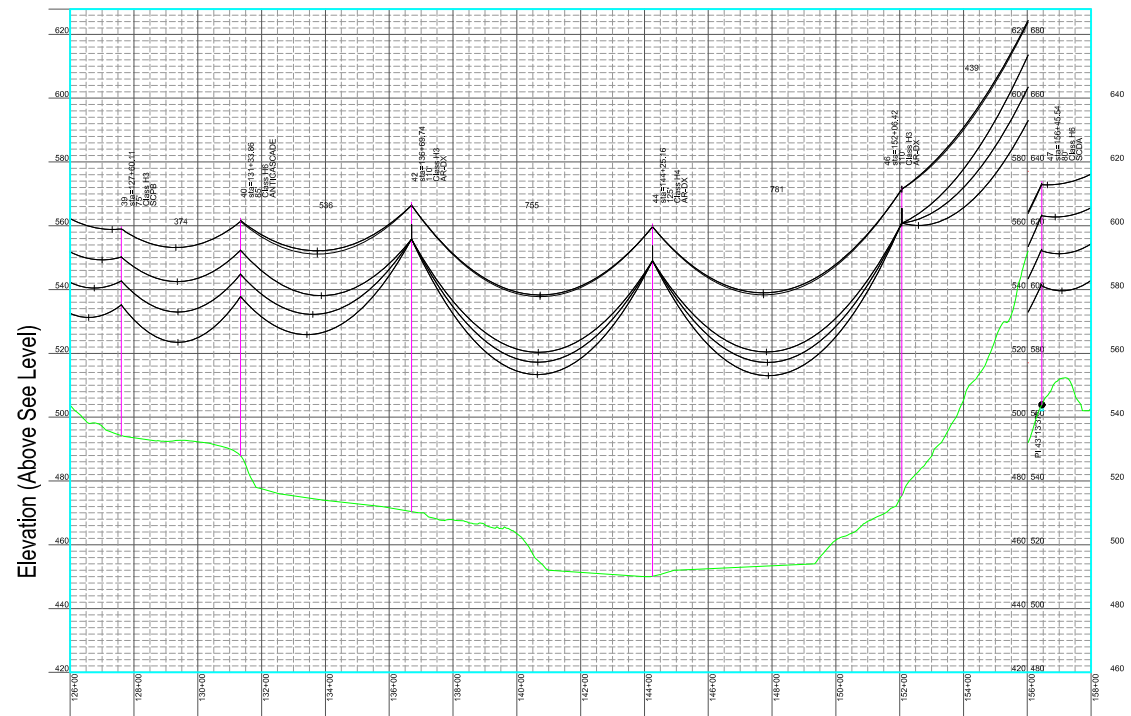
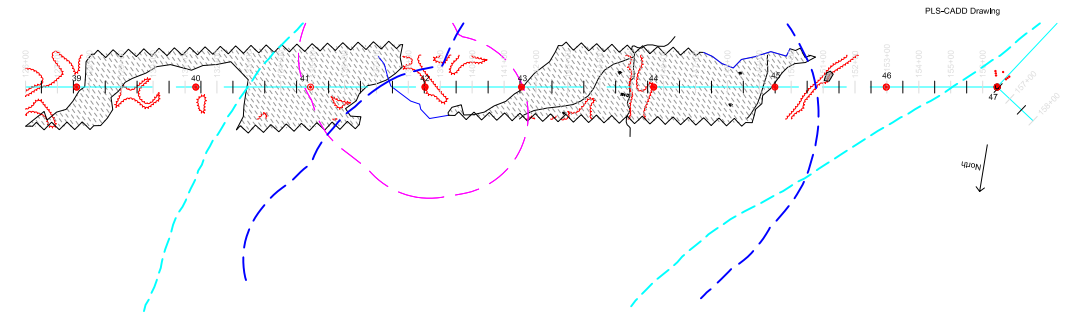
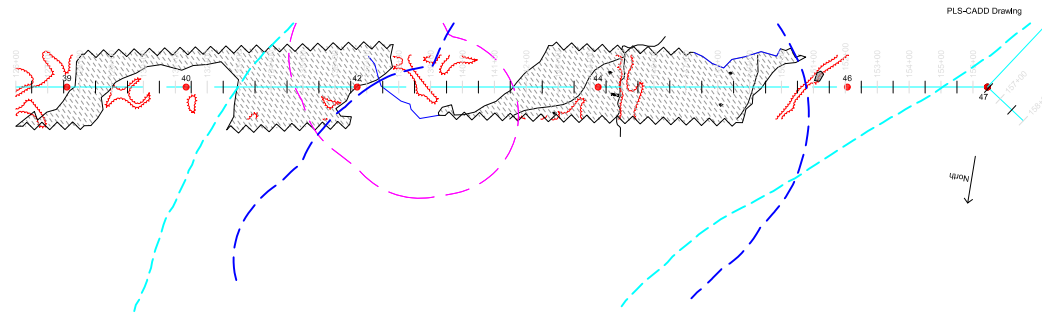


LEGEND

- STREAM BUFFER
- INLAND WADING WATERFOWL HABITAT
- DEER WINTERING AREA



ALTERNATE DESIGN

ORIGINAL DESIGN

NOTES:

1. THE PLANS AND PROFILES SHOWN ARE PROVIDED TO PRESENT A COMPARISON OF THE ORIGINALLY PREPARED PERMIT DESIGN (ON THE LEFT), WHICH WAS BASED ON TYPICAL 115KV TRANSMISSION LINE CONSTRUCTION, AND AN ALTERNATIVE APPROACH (ON THE RIGHT) WHICH WAS PREPARED TO PROVIDE ADDITIONAL GROUND CLEARANCE.
2. POLE HEIGHTS IN THE ALTERNATIVE APPROACH WERE INCREASED AS MUCH AS 25-FEET TO GAIN AS MUCH GROUND CLEARANCE AS POSSIBLE.
3. CONDUCTOR HEIGHT OF ALTERNATIVE APPROACH IS APPROXIMATELY 25' MORE THAN THE ORIGINAL DESIGN.



SGC Engineering, LLC
a part of Senergy



THIS INFORMATION CONTAINED HEREIN IS STRICTLY CONFIDENTIAL AND IS THE SOLE PROPERTY OF THE PROJECT OWNER.

ISSUED FOR REVIEW

DATE: SEPTEMBER 24, 2013 SCALE: N.T.S. DRAWN: MGL DESIGN: DLH APPD: TMH

NO.	REVISION	APPD:	DATE:
A	ISSUED FOR REVIEW	TMH	09/24/2013

TITLE:	GENERATOR LEAD STRUCTURES #39 - #48 EXHIBIT
PROJECT:	BINGHAM WIND PROJECT SOMERSET COUNTY, MAINE
CLIENT:	BLUE SKY WEST II, LLC 129 MIDDLE ST., 3RD FLOOR, PORTLAND, ME 04101

SGC PROJECT NUMBER	782001
DRAWING NUMBER	782-13-1301
REVISION	A
SHEET NUMBER	1 OF 1