

# B-07-1

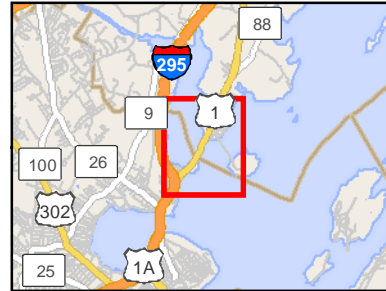
## Presumpscot River

### Portland / Falmouth

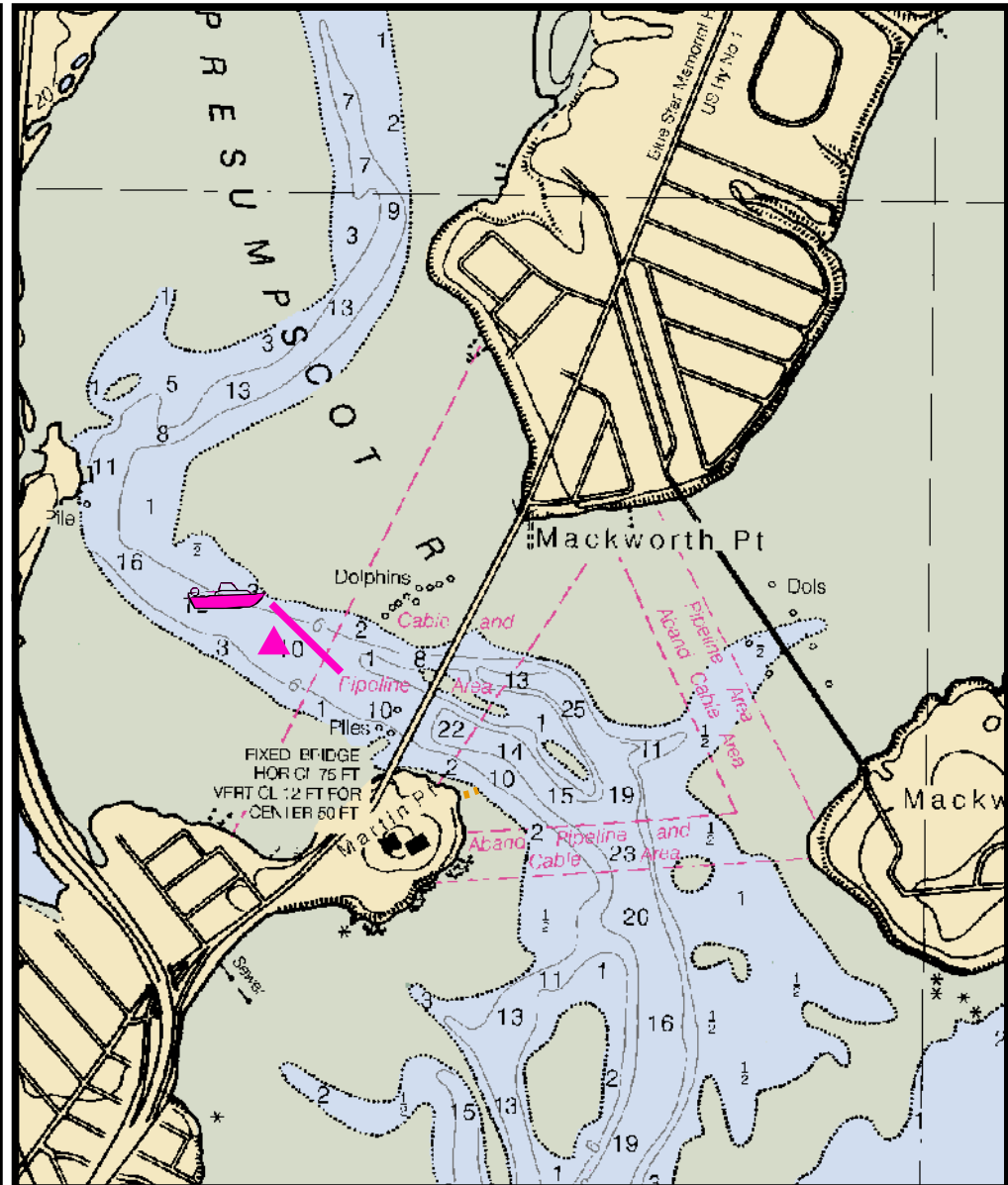
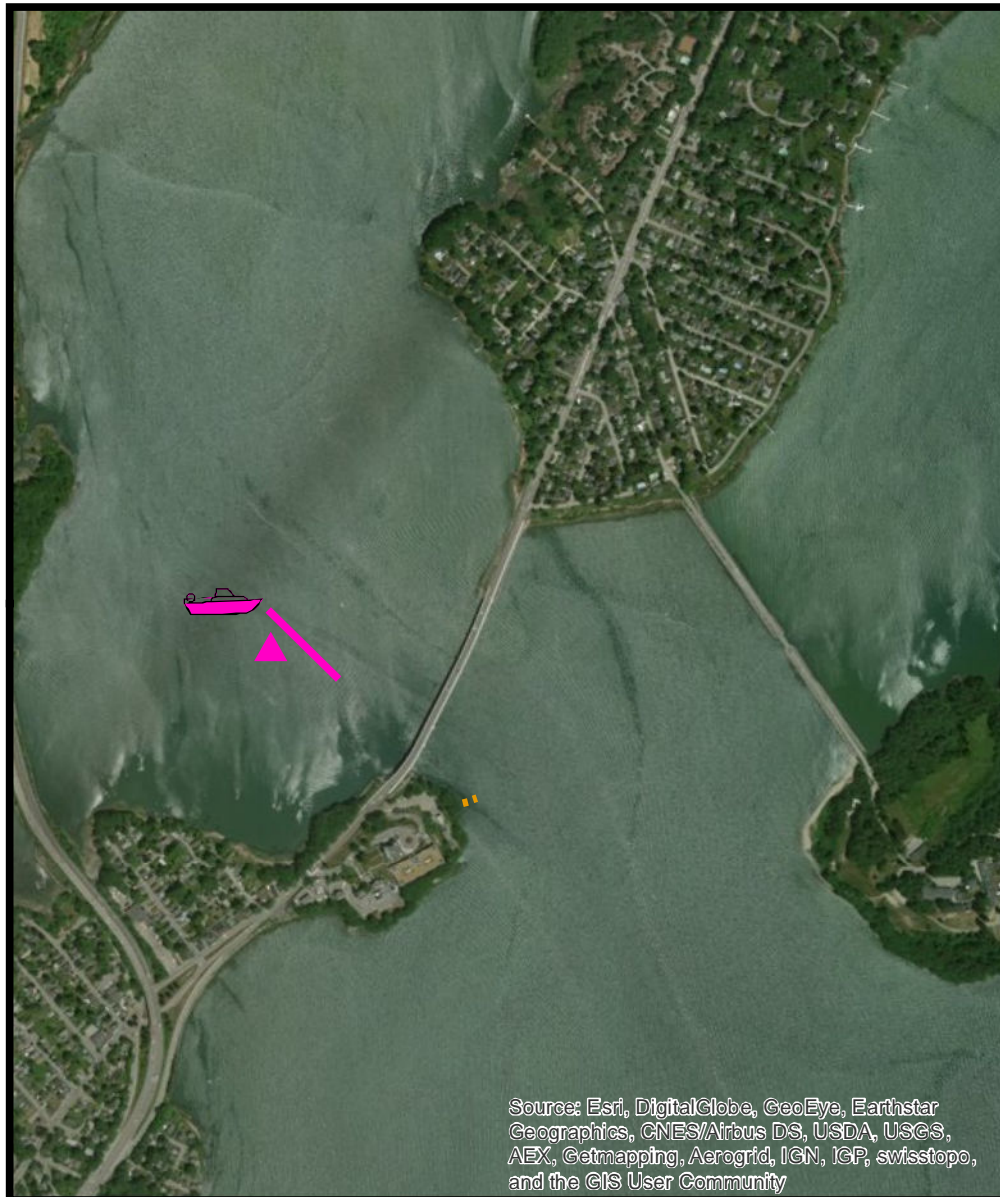
0 750 1,500  
Feet



Printed: 1/22/2018



Legend	
	Boat Launch
	Containment boom
	Collection point
	Staging area
	Response vessel
	Collection point
	Tide slide
	Vac truck
	Skimmer
	Command post



# Presumpscot River

**Town** Portland / Falmouth

**Port Region** Casco Bay

**Latitude**

**Longitude**

**Strategy** B-07-1

**NOAA Chart #** 13292

**ESI Map #** 48B

**EVI Map #** 12

## Resources At Risk

**ESI Shoreline Type(s)** Sheltered tidal flats  
Salt marsh

**Environmental Concerns** Large shorebird area, shellfish beds (seed harvested), diadromous fish runs, Least Bittern (endangered)

## Strategy Information

**Strategy Purpose** To divert oil from upper Presumpscot River

**Work Assignment** Deploy JBF skimmers or use open water skimming to collect oil from convergence zone mid-channel upstream of the Route 1 bridge.

**Staging Areas** East End Beach boat launch, Martin's Point (parking lot)

**Site Access** East End Beach, Martin's Point parking lot.

Nearest address: 59 Veranda St., Portland

**Nearest Boat Ramp** East End Beach boat ramp, 145 Cutter Street, Portland

**Collection Points** Mid-channel upstream of Route 1 bridge

**Approx. Tidal Range (feet)** 9

**Max Current (knots)** **Flood** > 2 knots **Ebb** **Source**

**Special Instructions** Very shallow water and exposed mussel beds and clam flats at low tide. No navigational aids, channel difficult to find at certain tides. Booming has been unsuccessfully attempted many times east of the Route 1 bridge.

## Recommended Equipment / Resources

**Length of Boom (feet)**

**Type of Boom**

**Recommended Equipment (Minimum)** JBF Skimmers or other vessel mounted skimmers.  
Boom to direct oil to skimmer  
Storage for recovered oil

Unless otherwise indicated, the boom length given is the distance measured on the chart. Actual length required may vary with conditions.